

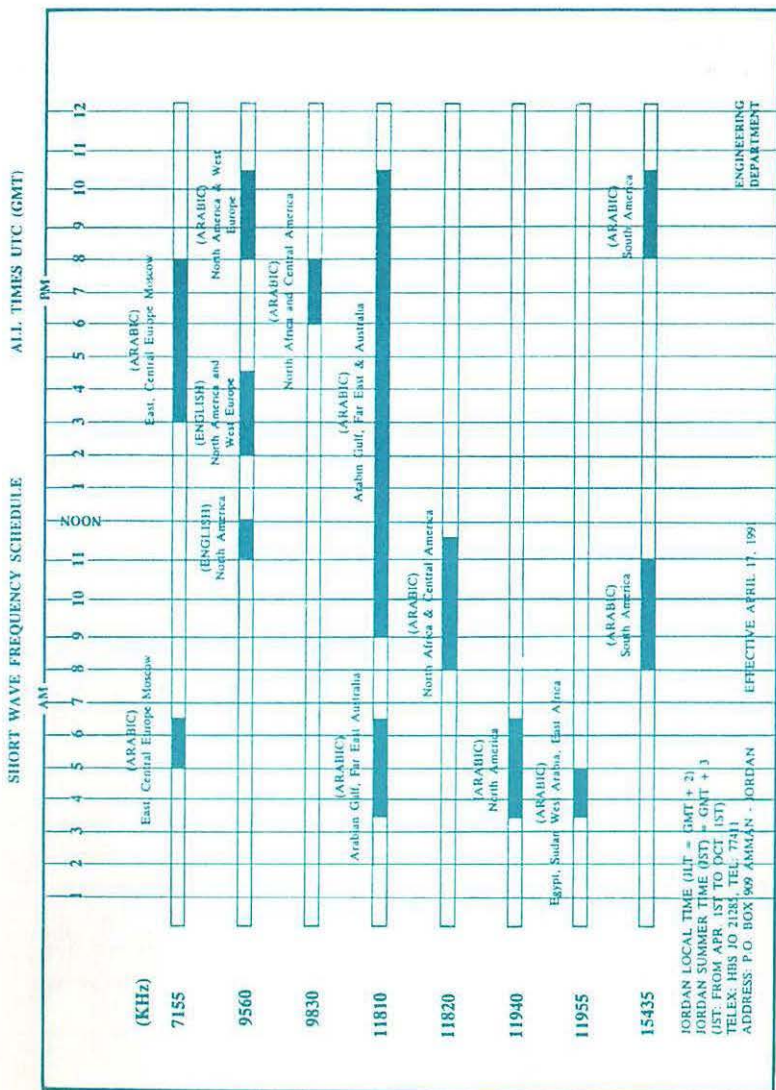


the JOURNAL

NORTH AMERICAN SHORTWAVE ASSOCIATION

Volume XXXIV, Number 4

April, 1994



SANGEAN **ATS-803A**



Here is a full-featured portable with all the capabilities you want at an affordable price. The Sangean ATS 803A covers it all: longwave, medium wave, FM and shortwave to 29999kHz. Five tuning functions offer exceptional versatility: manual tuning knob, keypad entry, auto scanning, manual scanning and memory recall. Readout is to the nearest 1 kHz on the large LCD display. Nine memories are provided for your favorite stations. Five other memories retain the last station tuned on five bands (LW, MW, FM, SW and AM). A BFO knob is provided for excellent SSB/CW reception. A dial lock and dial light are provided. This radio offers exceptional fidelity because of its large 4" speaker and use of both Bass and Treble controls. FM Stereo reception is featured through the headphone jack. A separate RF control insures maximum sensitivity without overload. A built-in 24 hour LCD clock can turn the radio on at any preset time. Jacks are provided for external antenna (RCA type), stereo headphones, tape recorder and external power. An AC adapter, stereo headset and wave guide are included at no extra cost. Requires two AA batteries for clock/memories and six D cells for portable operation. This model also features a Wide-Narrow selectivity switch not found in other radios at this price. One year limited warranty. 11 3/8" x 6 1/4" x 2 1/8" 4 Lbs. (7 Lbs. ship).

Now our best selling portable is at the best price ever! Nothing else at this price compares!

ATS-803A SALE

\$149.95 (+\$6 UPS)

(on sale through 7-1-94)

SONY

ICF-M350V



Here is a truly incredible value from Sony Corporation. This four band digital portable receives AM (530 - 1710 kHz), FM (87.5-108 MHz), VHF television audio (channels 2-13) and the NOAA weather band! (No SW reception). You can store up to five frequencies on each band for a total of twenty memories. The built-in 3 inch speaker provides pleasant sound. Sony has included a key protect button to lock the radio's controls. The 12 hour digital clock-alarm continuously displays the time when the radio is off. With 3.5 mm mono earphone jack and hand strap. All this in a compact size and at a very compact price! This is the ultimate emergency radio for when the power fails. It also makes a great gift for that person who has everything! Requires three AA cells (not supplied), 4.5 VDC, 7.75" x 3.75" x 1.35" 16 oz. (3 Lbs. ship). One year limited warranty. Order #1056 **\$54.95 (+\$5 UPS)**

Recent Arrivals at Universal ...

● Universal M-8000v5

The ultimate decoder is even better with the addition of: ACARS, PACTOR & ARQ6-90. #0085 **\$1349.00 (+\$10)**

● Sony ICF-SW30

An affordable dual-conversion digital with 15 mem, dual clock-alarm, sleep and autoscans. #2230 **\$99.95 (+\$5)**

● Sony IPS-760

Sony's latest and greatest GPS. #1069 **\$1299.95 (+\$8)**

● Yaesu FT-11R

This is one incredible 2M HT! #0608 **\$319.95 (+\$4)**

GRUNDIG

YB-400



Grundig's newest model represents excellent value in a mid-price portable. The Yacht Boy 400 is praised in the *1994 Passport To World Band Radios* "Best performance for price/size category ... right up there with very best among world band radios." Coverage is complete including long wave (144 - 353 kHz), AM band to 1710 kHz and shortwave from 1711 to 30000 kHz. FM (87.5-108) is included with stereo provided to the headphone jack. A thumb wheel knob on the side of the radio provides smooth single side band (SSB) tuning. The illuminated digital display provides tuning resolution at 1 or 5 kHz on shortwave. Two bandwidths are featured. The narrow position affords maximum selectivity, or the wide position may be chosen for best audio fidelity. The keypad will quickly get you to any frequency or store up to 40 of your favorite stations in the presets. The presets may be accessed directly or you can scan through them by using the radio's second set of UP/DOWN buttons. The YB-400 can also frequency search. The dual digital clock is visible while the radio is playing. Other refinements include: snooze and sleep buttons, lock, HI/LOW tone switch, LOCAL/DX switch, and 9/10 kHz MW scan selection. External jacks are provided to earphone (3.5 mm), antenna (3.5 mm) and 9 VDC input. The YB-400 comes ready to go with six AA cells, stereo ear plugs, wind-up antenna, Owners Manual, Grundig Shortwave Guide and vinyl carry case. 8"W x 5"H x 1.5"D. 1Lb 5 oz. One year limited warranty.

List \$269.95

Order #0040

\$219.95 (+\$5 UPS)

**universal
radio inc.**

Universal Radio, Inc.
6830 Americana Pkwy.
Reynoldsburg, Ohio
43068-4113 U.S.A.

800 431-3939 Orders & Prices
614 866-4267 Information
614 866-2339 FAX

◆ HUGE CATALOG ◆

Our new 100 page catalog is bigger than ever, with everything that is new for the listener, ham or scanner enthusiast. Available FREE by fourth class mail or for \$1 by first class mail.

Universal Radio ...

Serving Listeners Since 1942!

STORE HOURS

Monday - Friday	10:00-5:30
Except Thursday	10:00-8:00
Saturday	10:00-3:00
Sunday	-CLOSED-

Visa, Mastercard or Discover card.
Prices & specifications subject to change.

NASWA Notes

Bob Brown KW3F
238 Cricklewood Circle
Lansdale, PA 19446
CompuServe 74756,1557
Genie R.BROWN106
Packet KW3F @ WB3JOE



The seventh annual *Winter SWL Festival* is now history. Over 200 hobbyists descended upon tiny Kulpville for another terrific week-end of fun. If you missed it, we look forward to perhaps seeing you there next year. Hopefully, the pages of the *JOURNAL* will carry musings (hint!!!) from our members about their experiences. Remember to check the Calendar of Events for other DX meetings scheduled throughout the year. These are great opportunities to meet other hobbyists, exchange news & information, and have a good time.

ANARC Awards

Congratulations are in order for long time member and retired *Listener's Library* editor John H. Bryant who was selected as the *North American Shortwave DX'er of the Year* by the Association of North American Radio Clubs. The announcement was made at the Saturday evening banquet in Kulpville by the *Voice of NASWA/ANARC*, Marie Lamb. John's contributions to the hobby are many but his tireless devotion to the *PROCEED-*

INGS publication is particularly noteworthy. Other award recipients included Daryll Symington, *North American Specialty DX'er of the Year*, and Harry Weatherly, *International DX'er of the Year*. Congratulations to all!

Editor and Column News

Because of other obligations, Bill Kurrasch has told me that he must take a break from his NASWA duties. Bill has been editing *African Destinations* and he also has provided pasteup assistance on *NASWA Portraits*. On behalf of the entire membership I'd like to say a big THANKS! to Bill for his contributions to the club.

Taking over *African Destinations* will be veteran Africa DXer Al Quaglieri of Albany, NY. Look for Al's first column next month.

Because of a heavy workload, Mitch Sams has had to put his *Asian Destinations* column on the back burner. This is, however, only temporary and Mitch tells me that we will be

Welcome to the following new NASWA members -

Larry Albee, Elkins Park, PA
Zack D. Anderson, REP. OF SINGAPORE
Toon Beenen, VA DEN HAAG, NETHER-
LANDS
Jesse Bruner, Raleigh, NC
Dan Case, Rochester, MN
C. Clifford Coffman, Hammond, IN
Lloyd W. Creech, N. Augusta, SC
Mark Glusker, San Mateo, CA
Mark S. Hall, Arlington, VA
James R. Hugunin, Chicago, IL
Robert J. Kalal, Columbus, OH
Yasuaki Katagiri, Tokyo, JAPAN
Rob Keeney, Overland Park, KS
Julian A. Koplen, Danville, VA

Dave Marshall, Springfield, OH
Jim McClure, Lexington, KY
Mark W. Meese, West Chester, OH
John L. Milewski, Milwaukee, WI
Michael O'Hare, Atchison, KS
Masao Otani, Hokkaido, JAPAN
Alfred R. Raymond, Sand Lake, MI
Ken Reiss, Manchester, MO
Charles Segal, Lambertville, NJ
Ken Semproch, Riverview, MI
Stanford Shaw, Los Angeles, CA
James Streitmatter, Elkhart, IN
Bill Taylor, Kennett Square, PA
Hans Tenney, Baldwinsville, NY
F. Thomas, Deerfield, IL

Our Motto is - "Unity and Friendship"

hearing from him soon.

While I'm on the topic of columns, let me say that we sure could use some feature articles, station profiles, reviews, construction projects, etc. If you've had an idea for a feature, now's the time to crank it out. Send it to me either via Email or my snail mail address as listed on the masthead.

Thanks to Alan Johnson, we have obtained back issues of *Frendx* for 1971. A reminder that we still need your help in obtaining back issues of *Frendx* for our *Twenty Five Years Ago* feature. We still need: September 1969 through December 1969 (4 issues); and all of 1970 (12 issues). If you are willing to part with your back issues or can make copies of those issues, it would be appreciated. Please contact Rich D'Angelo (2216 Burkey Drive, Wyomissing, PA 19610 / GENie: "R.D'Angelo3") as soon as possible. Thanks!!!

The location and dates for *RadioCom'94* have changed. It's still in California but the

ANARC SWL Ham Net

Tune in Sunday mornings at 10 A. M. Eastern Time on 7240 LSB for the latest in shortwave listening, DX tips, and up to the minute hobby news. Contributors share their DX tips via their own amateur radio stations or by telephoning a "gateway" station who then broadcasts the relayed tips. Net Controls Bob Brown KW3F, Hausie WB4JSP, and Tom Sundstrom W2XQ, host an always lively gang of DX monitors. (Best heard in the eastern half of NAM)

site has been changed to the Holiday Inn in Irvine. The dates are now 31 August to 3 September. See the *Calendar of Events* for further details. Are there any club members in California planning to attend that would be willing to represent the club at *RadioCom'94*? With membership support we may be able to have a club table at the convention. Please contact me if you are interested.

Calendar Of Events

- Apr 15 - Meeting, Philadelphia Area NASWA Chapter.** Kulpville Holiday Inn, Kulpville, PA. 7:30 PM Contact Dan Cashin (215)446-7831
- Apr 15 - Meeting, The Boston Area NASWA Chapter.** Bull Cafeteria, Billerica, Mass. 7:30 PM For additional information please contact Paul Graveline (508)470-1971, or via modem on Tom's BBS, (617) 698-8649 (300/1200/2400 baud), (617) 698-8734 (9600).
- Apr 16 - The Miami Valley DX Club** (All band orientation) meets on the third Saturday of each month at 1 PM. Locations vary but are announced in advance. For info, call the MVDXC (614) 471-9973 Or, send a SASE to MVDXC, Box 292132, Columbus, OH 43229-8132
- Apr 20- Meeting, N.E. Ohio SWLs.** Cuyahoga County Library, 9089 Brecksville Rd., Brecksville, OH (Rt. 21, just South of Rt. 82). 7:00 PM. For info send SASE to: NE Ohio SWLs, c/o Donald J. Weber, P.O. Box 652, Westlake, OH 44145-0652
- May 1 - The Tidewater SWLs** meet on the first Sunday of each month at 6:30 PM. For info, call Joe Buch, (804) 721-2782.
- Aug 31-Sept 3 - Radio Comm '94,** Holiday Inn, Irvine, CA. For more info send a #10 SASE to: SCADS, 6398 Pheasant Dr., Buena Park, CA 90620

Members are invited to submit items to be included in this calendar to Bob Brown.

If you've been following these pages the last two months, you are aware of an anonymous MUSING that showed up in the February Journal. As the Managing Editor of The Journal, I should have never let that Musing make it's way to these pages in that fashion.

I will reiterate what the Musings masthead states - "*Opinions expressed here are solely those of the submitters*". NASWA is a supporter of the efforts of Andy Sennitt and the crew who works hard to put together the WRTH every year. I have expressed in writing my apologies to Andy for any discontent the Musing may have generated.

I received the following letter from Andy which I am presenting here in it's entirety.

Mr. Bob Brown
238 Cricklewood Circle
Lansdale PA 19446 USA
March 24, 1994,

Dear Bob,

The musing from Don Moore in the March issue of The Journal caught my attention, as I realised that I had not seen the anonymous letter to which he referred - in fact, it appears that we never received our copy of the February issue. So belatedly, here is my response which I would be grateful if you would publish in the next available issue. Please shorten it as you see fit.

It is difficult to understand what motivates someone to write such negative and unconstructive comments - but it's not hard at all to imagine why the writer does not have the courage to reveal his or her identity. I'd suggest fear of ridicule from other members is a more likely reason than the one given!.

Let's get things in perspective - out of a total of between 2 and 3 million typeset characters in the WRTH, the writer quotes two specific mistakes and then says "two short examples will suffice". Suffice for what? Certainly not to justify the description "mini-review" that is inaccurately applied to it. I could do a better job myself of finding things to criticise in the Handbook - and I'm its editor!

But not content with rubbishing the efforts of myself and my collaborating editors - most of whom are themselves DXers, the writer personalizes the attack by adding the phrase (name withheld to protect my family). Clearly this is meant to imply that the WRTH editors respond to criticism with threats. If it's meant to be funny, it isn't. In fact, in a world where there is far too much violence, I think it's quite sick.

Since the writer claims to care about accuracy, I can also say that the whole notion is very far from the truth. I expose myself to criticism almost every working day by making myself available on computer networks for anyone to take a shot at - and quite often people do. As far as I know, none of them has come to any harm as a result!

I do not dispute the two facts quoted by the writer. These are mistakes and ought to have been corrected. But there are tens of thousands of facts in the WRTH - to produce a book without any mistakes at all would require a superhuman effort. But I'm just an ordinary guy, and like everyone else I sometimes make mistakes at work. Unfortunately, mine are printed in over 50,000 copies and sent around the world. A far cry from being able to hide behind a veil of anonymity!

I am very surprised that NASWA, some of whose officials have told me in the past that they value their good relations with us, should publish such an anonymous attack on WRTH in the guise of a "mini-review". But I'm pleased to note that no more anonymous contributions will be published. Actually, I would really like to hear direct from the writer of the letter so I can learn of the other mistakes he or she has found. After all, how can I correct mistakes I haven't been told about ?

Finally, I send this open invitation to all NASWA members to write to me at any time with criticisms, suggestions and corrections to the listings in WRTH. I even promise that your families will be quite safe!

Kind regards,

Andy Sennitt Editor, WRTH

FRENDX: Twenty Five Years Ago....Part I: April saw a combined "April-May" edition of *Frendx* as the heavy workload began to take its toll at headquarters. Therefore, this will be Part I of a two part look at this edition of the bulletin. Bill Eddings told members that it is now necessary to plan for a new operational set up. One of the planned changes will be the addition of a Corresponding Secretary. According to a recent questionnaire, the most appreciated section of the bulletin is the *Log Report* by Dan Ferguson; second is the *QSL Report* by Gregg Calkin; and third is the *Shortwave Center* for articles, etc. The ANARC DXer Census form was printed. This effort sought to gather information about DXers and their equipment to use in discussions with equipment manufacturers. Highlighting the *QSL Report* was Bob Estand's verification from Radio Greenland. Among the 55 reporters to the column were: Gregg Calkin, Gerry Dexter, Del Hirst, Ed Insinger, Chris Lobdell, Mike Macken, Henry Michalenka, Bob Padula, Alan Roth, Al Sizer, Bill Sparks, D.J. Weber, and Richard Wood.

Musings

This column provides a forum wheras members can express comments, ideas, and thoughts about NASWA or the SW radio hobby. Please feel free to comment on anything presented this month (or previous months). Opinions expressed here are are soley those of the submitters.

Richard E. Hankison, 3209 W. 77th St., Prairie Village, KS 66208

Re: Musings - NASWA Journal - February, 1994

I am responding to the request of "Anonymous" for feedback on the new (1994) edition of World Radio & TV Handbook.

I find the new publication to be a welcome addition to my resources. I am sorry that "Anonymous" is so disappointed in "WRTH" simply because it contained two statements in the African section that were no longer true. For my part, I appreciated the reviews of software - they reviewed a package that I was thinking of buying quite favorably. I may buy it. I also enjoyed the up-to-date entries regarding the changes in domestic shortwave in Germany - a good effort, especially when you consider it was projection upon a very unstable medium. Finally, I picked up a signal this morning where no signal should be - at least according to "Passport". Luckily, "WRTH" had it pegged as Vatican Radio's transmission to the Far East. The interval signal verified that about ten minutes later.

There you have it. Anonymous -2; Me +3.

In closing, I have two comments. First, to NASWA. America is a free country, and one of the benefits of a free country is the freedom of speech. But, from my perspective, allow yourselves the right of an editor in a free society to selectively choose your material. "Anonymous" has nothing to say that is constructive. Save your space for when he or she can do better.

And to "Anonymous" I say, make yourself known, at least to Andy Sennitt. I don't know him personally, but I suspect that if you itemized your criticisms, and signed your name (rather than taking the back-stabbing approach you have chosen) he might actually welcome your criticism. Stand up for what you feel, or shut up.

Ernie Lawrence, 11 St. Helena St., Perry, NY 14530

Shortwave listeners tuning in the 120 meter band are likely to notice a new source of radio interference. Driftnet beacons, previously heard in lower portions of the radio spectrum, have been appearing in the frequency range between 2300 and 2500 kilohertz. CW calls YW24, PR19, JQ15, A8, QC46, CC2, CC3 and others are disrupting reception of popular DX targets like CAAMA Radio and La Voz de Atitlan.

These 3 or 6 watt radiolocation devices are mounted on buoys attached to fishing driftnets. Despite having been called "curtains of death" by a previous presidential administration and having been banned on the high seas by UN resolutions passed in 1992, these transmitters are apparently being used within the 200 mile territorial waters of some countries. Almost all operate illegally on frequencies outside of those allocated for such radiolocation devices.

NASWA members interested in learning more about driftnet beacons should read Al Underwood's monthly column in the LOWDOWN, the excellent monthly publication of the Longwave Club of America. It can be obtained from Bill Oliver, our NASWA Journal publisher, at the annual subscription rate of \$18.00 (\$19.00 in Canada/ \$26.00 overseas).

Paul Brouillette, KA8LMC, 611 Illinois Street, Geneva, IL 60134

Recent MUSINGS about international broadcasting via satellite and its future impact on shortwave as we know it today have been very thought provoking. I was especially interested in comments by Harry Helms in the March 1994 JOURNAL. He paints an optimistic picture of the benefits that satellites could bring to international broadcasting. I hope he is right, but to me current socio-economic trends suggest something quite different.

While the world economy, and that here in the United States is recovering in some ways, the picture is still not good. One only has to pick up a newspaper to read of the almost daily layoff announcements affecting thousands of workers from our major corporations. These jobs are being lost permanently because of cheap competition from foreign cheap-labor markets, corporate downsizing and new technology.

Particularly disturbing were recent articles in the Wall Street Journal which described numerous situations (such as utility meter readers, for example) where new wireless technology is replacing thousands of workers with only a few workers, i.e., those few who are needed to design, program and maintain the new high-tech systems. The displaced workers are often either too old or lack necessary skills to move to one of the new jobs, to say nothing of the fact that the number of new jobs available is a couple of orders of magnitude fewer than the number of jobs eliminated. The Wall Street Journal pointed out that the eventual result could be a severe polarization of society into a tiny minority of technically-savvy elite and masses of the permanently unemployed or under-employed. In other words, we will become a sharply divided society of "Haves" and "Have-Nots". A similar scenario has been discussed by Vice President Al Gore regarding the " Information Superhighway " and its related technology. He has stated his belief that legislation may be necessary to ensure equal success for all economic classes to the Information Highway to prevent a situation where, for example, those "elite" with access always get better job opportunities simply because they have better and faster access to information than everyone else.

The employment situation alone leads to a feeling of economic insecurity for a great many people. The result is that people's discretionary income available for spending on luxury items such as shortwave radios and satellite receivers is way down. People feel they have to save all the money they can since they may lose their jobs tomorrow. Since their discretionary income is reduced, they are already, in a sense, on their way to becoming " Have-Nots".

On a personal level, I can cite one example, which in fact Mr. Helms' article made me think of when he said that shortwave may go the way that vinyl LP's did when CD's came along. I really used to be into music, and throughout the 70's and early 80's built up a large collection of LP's. Vinyl discs had been around in one form or another for about 75 years and, and when properly cared for, provided about the best audio quality available to the average person. They seemed like a safe bet to build a long-term collection. Then along came CD's. There was no doubt that they provided superior audio and were more durable than LP's, but at a cost 50% greater and requiring an incompatible player costing several hundred dollars. This in itself was not so bad, but then came the sudden stoppage of LP products and the simultaneous withdrawal of LP's from record store shelves. Now people were forced to purchase even existing older LP releases on CD. This occurred right about the time the discretionary income problems were starting to hit more people, with the result that many people, myself included, still don't have a CD player. True, the cost of CD's and players has come down quite a lot in the last few years, but there is also the factor of some consumers having lost interest in something they have now learned to do without.

My point is, will the same thing happen if most international broadcasting switches to satellite? Today, a person has to have substantial money available to set up a satellite receiving station, which costs anywhere from \$2000 to \$5000. You must definitely be a "Have" if you are to easily afford this! Technological advances will, of course, lead to some form of direct satellite broadcast system, costing much less, perhaps about the same as a

better shortwave radio today. (Although I, for one, scrimped and saved back in 1985 to buy an ICOM R71A, which I still own and probably couldn't afford today due to shrinkage in discretionary income.) But the potential costs of satellite reception are not limited to hardware. Today in order to receive much of anything in the way of satellite TV requires one to lay out a few hundred dollars a year in fees to (legally) access most channels. Will some satellite operators try to do the same with access to international broadcasters? Probably. There is money to be made.

I agree with Mr. Helms' observation that capitalism will outweigh ideology when it comes to potential censorship by satellite operators. However, a less ideological and more capitalistic form of censorship is almost certain to occur. We SWL's, at least in part, listen for varied and "exotic" news and information, much of which could be thought of as trivial or unimportant in some peoples' opinion. At such point that an international broadcaster's program digresses into an item deemed by the satellite operator to be of no interest to the American listening public, it will almost certainly be time to mute the broadcaster's audio and insert some commercials!

So, in the end, it seems likely to me that the free flow of international information which we now take for granted and which is totally accessible for the cost of a shortwave receiver and a length of wire, will soon become quite costly, and less complete. In fact, it may not be accessible at all to many of us, if the costs of expensive hardware and satellite access fees stay the way they are today. The "Haves" will get all the information they can digest, and the majority of us will be economically excluded from yet another source of information and entertainment.

Ray Dahlin, 5509 King Arthur Ct. Apt.2, Westmont, IL 60559

Hi Guys and Gals..

I don't have static in the attic, but internal interference, from my tabby cat, Rowdy, who lays on my papers - parks his cute head on one hand, and paws away at my moving pen. I put up with his kitty capers, because I tape my programs, as I make short notes. I never get much done, but this 77 year old softy just can't get mad at his playful little buddy.

Sometimes we both end up with eyes closed, and take a cat nap, and I always pray he don't step on my blue cable converter button again - (because somebody's always using a sub-machine gun.) Oh! My heart!

Richard A. D'Angelo, 2216 Burkey Drive, Wyomissing, PA 19610

The true meaning of the word perseverance can be found in Sam Barto's QSL Reports column. Here are a couple of examples from the last two months columns: 1) Steve Lare reporting his 25th time signal station verification (its not the program content that keeps him listening!), 2) Mike Hardester verifying La Voz de Galapagos after about 18 years worth of attempts, and 3) veteran DXer Marlin Field finally wrestling a QSL from Radio Libertad in Perú after a mere 32 follow-up attempts! Nice work guys. Blue blood QSL'ers are a tough breed.

Once again, the annual *Winter SWL Festival* was superb. Thanks for another great weekend go out to Bob ("Big Signal") Brown, Harold ("Dr DX") Cones, and Kris ("I don't have a cute nickname") Field for a job well done. Saturday evening produced two significant highlights with a Moroccan belly dancer making the cocktail hour more enjoyable than usual and hearing the announcement by Marie Lamb that John Bryant was selected as ANARC's 1994 North American Shortwave DXer of the Year. John has made many significant contributions to our club and the hobby in general. Congratulations John! Only three years ago, the ANARC awards program was reestablished after a brief hiatus. The last three North American Shortwave DXer of the Year recipients have all been long time NASWA members: Berg - 1992, D'Angelo (who?) - 1993, and now Bryant - 1994.

Easy Listening

Richard D. Cuff
213 Parkview Avenue
Allentown, PA 18104-5323
GENie R.CUFF
MCI Mail 375-4854
Prodigy NCHT70A

Voice Of Free China

I consider the Voice Of Free China (VOFC) to be in the same general category as Radio Austria International—focusing on domestic issues or international issues specifically affecting the broadcasting country. One of the interesting aspects to VOFC news is that it isn't all flattering. This past week's newscasts spent a lot of time reporting on investigations into recent election irregularities; one day's news mentioned a shooting in an industrial area.

Here's a look at the day by day program rotation for the 0200 Voice Of Free China (VOFC) transmission relayed to the USA via WYFR in Florida. News begins each day's program, and a Chinese language lesson program, **Let's Learn Chinese**, concludes each day's program. I recently sampled the Sunday, Monday, Tuesday, and Wednesday programs; information on the other days' programming was taken from the new edition of John Figliozzi's *Shortwave Radio Guide* (see later) and Fred Waterer's "Listening In" programming column in the ODXA monthly publication *DX Ontario*.

Sundays: While John Figliozzi and Fred Waterer show **Main Roads and Byways** and **Mailbag Time** as the featured programs, my recent sampling proved different. The first program feature was **East Meets West**, an interview program with a Western perspective on Chinese culture. If this past week's program was an example, the interview will probably be with an English-speaking expatriate now living on Taiwan. **Mailbag Time** aired as shown by John and Fred, and appears to be similar to other listeners' letters programs.

Mondays: An abbreviated news bulletin is followed by **News Wrapup**, a look at the

prior week's biggest news stories, followed by **Jade Bells And Bamboo Pipes**, a program of "classical Chinese music", VOFC's term for folk music.

Tuesdays: **Kaleidoscope** and **Taiwan Economic Journal** are featured. **Kaleidoscope** is a current affairs magazine on Taiwan culture and events. **Taiwan Economic Journal** is pretty much self-explanatory. As Taiwan's economy is arguably the most robust in the region (aside from Japan's), this program is particularly interesting to those of us with business interests in Asia.

Wednesdays: **Main Roads And Byways** and **Music Box** are featured. **Main Roads and Byways** is a cultural program on Taiwanese people and places. I wouldn't exactly consider the program a travel and tourism program—one recent program looked at a catholic home for handicapped children. **Music Box** focuses on modern Chinese music, often tied to a particular period in the recent past or other theme. Note that the week I sampled these programs may be unique—John Figliozzi and Fred Waterer only show one program—**Music Box**—as the Wednesday feature.

Thursdays: **Perspectives** and **Journey Into Chinese Culture** are featured. **Perspectives** is an interview program quite similar to Deutsche Welle's **Insight**, with local personalities commenting on Taiwanese affairs. **Journey Into Chinese Culture** looks at the long traditions and deep roots of China's Unique culture.

Fridays: **People** (profiling the customs and habits of Chinese people) and **New Record Time** (the latest in popular Chinese music recordings) are featured.

Saturdays: **Reflections** (aspects of life in Taiwan) and **Jade's Kitchen** (Chinese cooking and recipes) are featured.

The 0200 program rotation is repeated the next day at 0300. For example, the Sunday 0200 program is repeated Monday 0300.

April Highlights: BBC World Service

If you normally listen to the BBC between 0300 and 0600 UTC, you may find some programs shifting in parallel with the March/April European and North American shifts to Daylight Saving Time ("Summer Time" in Europe). The April *BBC Worldwide* notes that most European and some North American listeners will find **Newsdesk** at 0300, **Europe Today** at 0330 and 0530, **Newshour** at 0400, **British News** at 0509, and **The World Today** at 0515. The usual Europe targeted frequencies of 3955, 6180, and 6195 are affected by the switch; others may be also, given this reference to "...some North American listeners."

Shakespeare Today

William Shakespeare is the subject of a new "major radio season" on the BBC. This probably means programming will focus on Shakespeare for April, May, and June, as the last "major radio season" (on the USA) incorporated special themed programs for three months.

Fridays, beginning April 8th, 0230: **Shakespeare's Globe** is a 30-minute 6-part program on interpretations of Shakespeare's works in other cultures. Special attention is paid to unique juxtaposition of Shakespearean themes with current events. For example, the political commentary of *Julius Caesar* is juxtaposed against the backdrop of South African elections. First airing Thursdays 1130; also repeated Thursdays 1715.

Sundays, April 17th and 24th, 0101: Shakespeare's *Macbeth* is a two-part **Play Of The Week**. This represents a combination of the BBC's fine dramatic renderings with some of the best-written English language drama of all time. Ian Holm, Penelope Wilton,

Michael Kitchen and James Laurenson star. Repeated at 1201 and 1901.

Wednesdays, beginning April 20th, 0130: **Playing A Part** is a 10-part 15-minute series with actors explaining why Shakespearean roles continue to fascinate performers and audiences alike. Sara Kestelman, Michael Pennington, and Samantha Bond are among those contributing to the series. The actors talk of how they prepare to play the most challenging and rewarding of Shakespeare's characters. Repeated at 0930 and 1715.

Monday, April 25th, 0101: **The Compleat Life Of William Shakespeare** is a single 45-minute program attempting to trace the progress of the boy from rural Warwickshire to the flamboyant actor-manager of London's most successful 17th-century theatre company. The program searches through shop receipts, legal documents, letters, playbills, and the diaries of Shakespeare's contemporaries for tidbits of the story. First airing Saturday April 23rd 1901; also repeated Monday 1515.

Monday, May 2nd, 0101: **Shakespeare And The Idea Of England** continues the thread with a debate over of Shakespeare as a national symbol for Britain. While Shakespeare is often thought to sum up the essence of Englishness, some critics now claim Shakespeare has been appropriated by the British establishment to speak for a narrow and conservative agenda, and others resent what they see as an impertinent attempt to knock Shakespeare off his national pedestal. First airing Saturday April 30th 1901; also repeated Monday 1515.

News and Feature Programs

Saturdays beginning April 2nd, 0015: **Writing Time** is an 8-part 15 minute series aimed at aspiring writers of all kinds. Russel Celyn Jones, who won the David Higham Prize for his first novel, *Soldiers And Innocents*, in 1990, hosts. Is it necessary to have experienced what you're writing about? Can you learn how to be a good storyteller? What can you do to develop your own personal style? Tune in for the answers. Repeated Mondays 1930 and Tuesdays 0915.

Saturdays, 0045: **The Learning World** is a weekly 15-minute program on education issues worldwide. It's interesting to hear of developments abroad when education garners such unfavorable press here.

Sundays beginning April 3rd, 2330: **Developing Health** is a new 4-part 30-minute series investigating the state of health care in developing countries. Specific developments in treatment methods and drugs are reviewed, along with an analysis of the social framework underpinning world health and health care. First airing Sundays 1401; also repeated Mondays 0630 and 1001.

Music and the Arts

Mondays beginning April 5th, 0015: **Rock 'N' Rice** is a new 6-part 15-minute series exploring the rapid expansion of popular music in the Far East, paralleling the economic growth in the region. Economic freedom doesn't necessarily mean musical freedom, however; Malaysia's teenage rap group 4U2C is popular in Singapore but is banned from Malaysia's state-run airwaves. First airing Sundays 0445; also repeated Mondays 1445 and Wednesdays 0815.

Thursdays beginning April 8th, 2330: **Stories In Verse** is a new 4-part 30-minute series of narrative classics written as poetry and read by some of Britain's leading actors. Themes include *Heroes And Heroines* (April 14th) and *Birds And Beasts* (April 21st). First airing Wednesdays 1530; also repeated Thursdays 1030.

Winter SWL Festival

It would be a gross understatement if I said I had a good time at the 'Fest. I had a *great* time, which seems to parallel other comments I've seen. John Figliozzi and I were pleased by the turnout for our Easy Listening forum. John put together a Listening Habits survey for those attending the forum and the 'Fest; we received 75 completed responses, and I'll summarize the results in a future column.

The encouragement and enthusiasm provided by 'Fest participants always helps me "recharge my batteries" when it comes to preparing the column each month.

1994 Edition: Shortwave RadioGuide

The 1994 edition of John Figliozzi's work should be available by the time you read this or soon afterwards. If you enjoy shortwave programs and want to plan your listening time more intelligently, I highly recommend the RadioGuide. John continues to enhance the guide; new features include selected broadcasts in the home language of non-English broadcasters, along with several listings of programs of a particular genre (for example, mailbag, music, sports). The general listings show all services broadcasting at a particular time and provide a terse description of a program's content. Target areas for a particular broadcast are also shown.

The RadioGuide does **not** show frequencies; for those, I recommend Tom Sundstrom's schedules shown in the *Journal* and available digitally by subscription.

Help Wanted

In this column, I tend to report on the types of program I enjoy—news, current affairs, science, business, and culture. I don't listen to that much music on shortwave, nor do I listen to much overtly evangelical broadcasts (HCJB excepted) nor political programs such as one finds on WWCW. I would like to report on these programs, though, but I need your help. If you have favorite music, religious, or political programs, drop me a note with your comments. I'll relay your recommendations to fellow NASWAnS. Thanks in advance for your help.

Until next month,

73 DE Richard

DX Target



The NASWA Country of New Britain

By Ernest Lawrence

This weekend (27 & 28 of November) I found my first good opening to Papua New Guinea of this DXing season. As I sat listening to Radio West New Britain on 3235 kilohertz, I spent a time of reflection considering my not so distant initiation to shortwave radio. I was intrigued by the tropical bands and spent much time listening on 60 meters, but thought those areas further down the radio spectrum to be the exclusive territory of more experienced and skilled radio enthusiasts. I viewed PNG listening as especially challenging.

The previous observations are not entirely inaccurate. Papua New Guinea stations will not be heard every day. However, at the right time of year and under good conditions, they are not nearly as elusive as I had previously thought. Good equipment does help. I used much of the gadgetry on my NRD-525 to clean up the RWNB signal this AM, but when they are up these fellows can be copied nicely with my DX-440 and a random wire. Beginners might look for Radio East New Britain on 3385. As this is the easiest PNG station I hear on 90 meters, I have chosen to make the island of New Britain the subject of this DXTARGET.

Attempting to follow the lead of Don Moore, who adds his personal experiences to those nicely written " Latin Destination " columns, I sought the observations of a family member who visited this region while in the US Navy. He described Papua New Guinea as an economically impoverished country containing vast unexploited mineral and timber resources. He thought the only places worth visiting to be yacht clubs. Rabaul, the largest city of New Britain and its chief port, was the home of a citizenry whose teeth were blackened from chewing betel nuts and whose

streets are covered by the spit thereof. It seems as though I have seen a more flattering portrayal of this country on public television. I'll have to accept these as the opinions of a sailor who has seen too many of the world's beautiful locales or my more romantic notions of Papua New Guinea will be shattered.

New Britain is the largest island in the Bismark Archipelago, located off the northeast coast of Papua New Guinea. The island, volcanic in origin, is 480 kilometers long, 80 kilometers wide and features a ridge of mountains of up to 2300 meters in height running the length. The people, almost entirely Melanesian, live mostly along the coastline. Fortunately, they have forsaken cannibalism and survive as fishermen and farmers. Fairly recent estimates would place the population at about 200,000.

Englishman William Danpier reached New Britain in 1700. In 1884 it became part of the German Empire and remained such until seized by British Forces in 1914. The island was given to Australia by a League of Nations mandate in 1920. The Japanese captured New Britain in 1942 and held it until it was retaken by Allied forces in 1945. The United Nations returned it to Australia. In 1975 New Britain became a part of the new country of Papua New Guinea.

While both RENB and RWNB are listed frequently in the "Tropical Bands Loggings" column of The NASWA JOURNAL, Radio East New Britain is reported somewhat more often. These loggings would indicate that the optimal times for DXing them would be between the months of October and April from 1030 to 1300 UTC. I hear PNGs best just before and after local dawn in western New York State at times when geomagnetic

atmospheric conditions are relatively quiet. It is not unusual for their signals to remain good until almost one hour after sunrise. My best opening ever to Papua New Guinea was on a weekend around the autumnal equinox of 1992 (see brief article "Blessed Heartburn" on pgs. 7 and 8 in the November 1992 JOURNAL).

Radio East New Britain located in Rabaul (3385 kHz) and Radio West New Britain in Kimbe (3235 kHz) are a part of the Kundu Provincial Network of Papua New Guinea. Both operate 10kw transmitters which were provided through a trade agreement with Japan. Listeners to these stations will hear a wide variety of musical styles ranging from pop and country western, to traditional songs including beautiful island music. Programming can be in local dialects or occasionally English, but I hear them most frequently in pidgin. This lovely language is easily identified as it includes many English words. Persons wishing to acquaint themselves with this tongue can

tune to Radio Australia PNG service in the early morning. I recommend listening to RA on 6020 kHz for easy reception.

Both of these stations are excellent verifiers of accurate reports written in English. The provincial program managers usually QSL by letter, sometimes with very attractive letterhead. Reports to Radio East New Britain should be sent to Otto Malatana at P.O. Box 393, Rabaul, ENBP, Papua New Guinea. Both PASSPORT TO WORLD BAND RADIO and THE WORLD RADIO AND TV HANDBOOK name Valuka Lowa as the contact for Radio West New Britain, but Esekial Mael seems to be a more recent verification signer. Their address is P.O. Box 412, Kimbe, WBNP, Papua New Guinea. Return postage or one dollar should be included for both stations. Reception and confirmation of RENB and RWNB count for the NASWA country of New Britain in the Oceania listing.

WANTED: Original or copy of the handbook or other material for the NordMende Globetraveler SeaB. This is a very early transistor SW/MW/FM receiver. Gerald Kercher, Quaker Hill, CT 06375-0168. Phone (203) 443-3949.

FOR SALE: Prepared cards customized to country and/or station including attractive "map logo" and all information. Specify country or station, quantity, language (Eng., Fr., Span., Port.) and card color (light blue or tan). 50¢ each or 12 for \$5.00 plus \$1.00 P&H. Jerry Kiinck, 43 Lein Road, West Seneca, NY 14224.

FOR SALE: Customized Beam Headings (from/to) and distances (MI/KM) to over 480 WRTH transmitter sites including new Russian Republics. ITU Country Codes included. Send your location or coordinates, \$6.95. NASWA Journals '91 and '93 complete, \$10.50 a year or \$20.00 for both. WRTH '91, \$8.95; '93, \$9.95. "Passport to World Band Radio" '92, \$7.95. All items include shipping (overseas shipping extra). Cashiers check or money order, please. Al Drehmann, Route 2, Box 3-B, Tryon, NC 28782. Phone (704) 894-3398, not collect.

WANTED: Kiwa Electronics MAP unit in good working condition. Scott Walker, 610 Park Avenue, New Cumberland, PA 17070-1724. Phone (717) 714-2567. Compuserve 71674,16.

FOR SALE: Two R390A receivers with meters and covers. Both are clean and have been aligned, but I have only one set of complete manuals. Price is \$250.00 for the best one and \$150.00 for the other plus shipping. John S. Brown, 1312 Adams, Altus, OK 73521. Phone (405) 477-2705 after 6 pm CST.

Listener's Library

T. J. "Skip" Arey WB2GHA
P.O. Box 644
Waterford Works, NJ 08089
Genie T. AREY1

At this point in time the 1994 Kulpville SWLfest is another happy memory. It was great to see everyone again. Is it any wonder that I am sitting here reminiscing about Kulpville gatherings past? (I go all the way back to the Pink and Purple Pancho Villa Room) If I rewind the Kulpville mind tape back to just 1993, I can remember the excitement caused by a new receiver hitting the market. The Yaesu FRG-100 was certainly the talk of the show that year. This receiver continues to be a dominant topic of discussion wherever radio folks gather. So the arrival of a Radio Database International White Paper(r) evaluating the "Frog 100" is cause for still further discussion of this topic.

PASSPORT(r) EVALUATION OF THE YAESU FRG-100 RECEIVER

A RADIO DATABASE INTERNATIONAL WHITE PAPER(r)

*Analysis by: Jock Elliot & Lawrence
Magne Laboratory: Sherwood
Engineering Contributor: Tony Jones*

24 pages

\$5.95 U.S. \$7.95 Canada and Elsewhere
International Broadcasting Services, Ltd.
PO Box 300 Penns Park, PA
ISBN 0-914941-22-4

Larry Magne is, of course, best known for his popular PASSPORT TO WORLDBAND RADIO books. Well before Passport had become a household name in the shortwave hobby, Larry was already widely known for his exhaustive equipment reviews. (It's my column and I'll split my infinitives if I want to) Given the price of modern shortwave receivers, it is hard to imagine anyone spending hundreds of hard earned dollars without first investing a few bucks in one or two RDI White Papers. This latest offering

from Magne and his staff continues the tradition of excellence in receiver analysis that we have all come to expect. Heck, I even began to think I had "made it" as a radio hobby journalist when I was briefly mentioned in the White Paper review of the Sony ICF-2010 some years back.

The FRG-100 review is broken down into sections including a General Description, Ergonomics, Performance, Lab results and the ever important Bottom Line. What has always made Magne's equipment reviews stand out above the crowd is his devotion to scrutiny of ergonomics. Somewhere along the line Larry remembered that shortwave listeners are likely to spend quite a few hours hunched over their equipment. Larry makes every attempt to discover if that hunching over will cause a pain between the shoulder blades. You would be surprised how much difference tilting the front panel of a receiver up a half inch can make. Magne also examines control placement and frequency readout with the same zeal.

Another area of evaluation that White Papers have become known for is "real world" usage. Magne and his minions don't just examine a receiver, they also delve into popular after-market options and modifications. With this, the reader is given the true costs of owning and operating a receiver such as the FRG-100.

The complete laboratory analysis of the receiver brings reality to the advertised specifications. Again, "real world" use is considered and tests are conducted in the receiver's ability to cope with signals from distant parts of the radio spectrum as well as adjacent and nearby frequencies.

This White Paper digs into the several controversies surrounding the FRG-100 including teething problems with the early

production runs. The reader is also given the information needed to seriously compare this receiver with its potential competitors the Drake SW8 and the Lowe HF-150. There is even discussion about the future of this growing segment of the receiver market. Face it folks, not everyone in this hobby has the cash or inclination to purchase an NRD-535.

Magne's latest RDI White Paper cuts through the countless BS sessions that have occurred at shortwave gatherings over the past year from Kulpville to Atlanta and back again. If you have been thinking about buying a Frog 100, or if you just want to speak with some authority about this receiver at the next SWL get together, an investment in this publication is well worth the cost.

SHORTWAVE SIDELINES

HOW TO TAME FIDO

In the February issue of the NASWA Journal, Brian Boulden wrote an article discussing the popular on-line computer services available to shortwave hobbyists. If you own a computer and modem, you are well on the way to acquiring the most up to date information about the shortwave hobby available. Information about shortwave signals often appear on computer BBSs months before it can be found in print. In this article, Brian mentions the FIDO NET SWL message base. Fred Hatfield's SWL FIDO area has grown in popularity since GENIE stopped providing unlimited time access to its shortwave message areas. Brian was right, however, in pointing out the complications that come with coping with the large number of messages that you are likely to encounter with this service. He also mentioned the solution.

BLUE WAVE 2.12

by George Hatchew

Registration Fee \$25.00

Cutting Edge Computing

PO Box 90476 Burton, Michigan 48509

Phone (810) 743-9283

Fax (810) 743-5910

BBS (810) 743-8464

Internet: Bwave@aol.com

I must confess that one of the reasons I had not frequented the FIDO area before now has been the lack of an off-line reader that I could live with. My various writing assignments as well as my "real world" jobs take up a lot of time. If I can't master a piece of software in a few hours, I have little use for it. I downloaded Blue Wave 2.12 from a local BBS system as BWAVE212.ZIP and was using the 30-day evaluation version in about an hour.

Blue Wave is available in either DOS or OS/2 versions over many local BBS systems. I am sure you will be able to locate the 30 day shareware evaluation versions on most systems that carry FIDONET because it is fast becoming the off-line reader of choice in this on-line community. The DOS version I acquired included the necessary .PIF and .ICO files to allow seamless operation in the Microsoft Windows environment.

Blue Wave allows you to download an entire area full of messages as a single compressed file. This greatly speeds up your on-line time which can be critical if you are logging onto a BBS that has toll or user fees attached. Blue Wave then allows you to examine this pile of messages off-line. It allows you to quickly sort through the messages that are of interest to you. You can also write your replies off-line and package them for return uploading. A process that could take over an hour on-line for a relatively small group of messages is now reduced to a few minutes of connect time. The FIDO SWL area is good for in excess of three hundred messages per week so Blue Wave significantly reduces the time you tie up your family phone line. (Much to the joy of my teenage son) Since the software sorts messages by topic, you can quickly skim over areas of little or no interest. This organization further accelerates the communications process.

Blue Wave 2.12 includes a documentation file that is 103 pages long so make sure your printer is full of paper before creating the hard copy. The documentation takes even the most novice BBSer through the whole software package in easy to understand language.

The only "trick" to configuring the software for your own use is a need to know the

preferred compression scheme for your local BBS. This is most often PKZIP and PKUNZIP but provisions are made for ARC, PAK, LZH and ARJ compression systems. If this sounds like Greek relax, the documentation explains even these details. The documentation shows you how to direct the software to utilize your existing compression/decompression software to make up the mail packets and move them along. Once this process is complete and you configure the program to accept uploads and downloads from your preferred telecommunications software, the program is well on the way to becoming a trusted friend.

What do you get for your \$25.00 registration fee? Unique primary and secondary registration codes that work only with the name or names you have registered the software under. This is important to note because you need to register your software under the same name you use on the BBSs

you frequent. (My problems in this area were quickly cleared up by a call to Cutting Edge's technical support service, more on this later). So if you are logging on as HAIRY HARRY THE HAPLESS HACKER, you need to let the folks at Cutting Edge know at the time of registration. You also receive access to a technical service department as well as priority service on this company's Internet message service and BBS. The registration fee is a one time deal that allows you to promptly register any upgrade versions you download in the future. Need I remind you that registering shareware gives the author the best incentive (money in his or her pocket) to continue to improve and upgrade the product?

For once you don't have to depend on my review before handing out your hard earned cash. Download Blue Wave 2.12 from a nearby BBS and check it out for yourself. I'll see you on FIDONET folks!!!

ATTENTION
SHORTWAVE LISTENERS

NEW SERVICE NOW AVAILABLE
24 hours a day • 7 days a week

DX-DAILY
The Shortwave Information Line

UPDATED EVERY 24 HOURS
by noted shortwave authority,
Monitoring Times columnist
and host of the weekly
"World of Radio" program
GLENN HAUSER

1-900-656-5455
95c per minute • Average call 4 minutes

Must be 18 years of age or have parental permission
Sponsored by TelePartners 900 • Louisville KY • (502) 478-7543

Equipment Review

Alan Johnson N4LUS
6001 Goldsboro Road
Bethesda, MD 20817
CompuServe 76665,1756
GEnie A.JOHNSON64

DRAKE R8PC RECEIVER CONTROL SOFTWARE

I have not been a big enthusiast for receiver control software since I primarily am interested in listening to a specific station at a particular time or just tuning around the bands to see what I might be able to hear. As a matter of fact, I don't even use the memory functions on my radio, preferring instead to punch in on the keypad whatever frequency I'm interested in listening to at the time. Part of the reason I don't use the memory channels on the radio is because I don't have any way to remember the contents of 100 channels, unless I resort to a written chart or computer database program.

However, since I won a copy of the R. L. Drake Company's control program for their R8 receiver at the recent Monitoring Times Convention, I thought that I would write up my impressions of the software and list its features for those who might be interested. The program is supplied on both 5.25 and 3.5 inch diskettes and runs under MS-DOS on PC-compatible computers. The program can be configured to use any serial port COM 1-4 at 9600 baud. No connecting cable for the radio is supplied and the advertised price from most vendors is \$59.

OVERVIEW

From what programs I have seen and the few I have dabbled with, there are two major types of receiver control programs - those that concentrate on management of receiver memory channels and those that serve as replacements for the receiver's front panel. The first type of program can be useful for setting up lists of frequencies to be stepped through or scanned, which is useful for setting up "target lists" of stations such as Indonesians, Africans, etc. or for utility monitors who may have to keep track of many frequencies which may or may not have activity. The second type of program

can be useful for control of a remote receiver or for those listeners whose computer is physically separated from the receiver, but the user wants to be able to control the radio while doing other tasks on the computer. Drake's R8PC does both, as well as enhance the receiver's capabilities, such as increasing the number of memory channels and expanding timer operation.

Installation is very easy — connect the radio to a serial port with a cable with DB-9 connectors (all pins must be connected), put the appropriate diskette in the disk drive, select the drive and type "INSTALL". The program does the rest. The program is run by switching back to the hard drive, selecting the "R8" directory that INSTALL has created and typing "R8PC". The program is started and the receiver is automatically switched on. For those who don't like to read a documentation manual before using a piece of software, R8PC is definitely your cup of tea, as there is no manual at all — there's not even a .doc file on the disc. All functions are explained via help screens, which are completely sufficient.

THE MAIN SCREEN

On starting R8PC, the main screen is displayed, consisting of three boxes and a header. The default screen colors can be changed via the Utilities menu. The header at the top of the screen displays the local date and time, the latter in 24 hour format. Beneath the header are the Frequency and VFO fields. The main body of the screen is taken up by the fields for front panel controls: Mode, Noise Blanker, Notch (On or Off - no provision for adjusting notch frequency), Synchro, Bandwidth, RF Preamp/Attenuate, AGC and Antenna, as well as the Memory Channel display, consisting of channel number and a user-supplied 20 character

alphanumeric label. The bottom segment of the screen lists the various functions accessed by the function keys: memory management, scans, clocks, timers, utility functions and help screens. A cursor is moved to select the desired field, either by pressing the highlighted letter in each field or by using the arrow keys. Pressing the highlighted letter again will toggle the settings within each field or, alternately, the horizontal arrow keys can be used to change the settings. The selected setting will be activated when the Enter key is pressed. A frequency can be tuned at any time (unless the cursor is in the Channel field) by typing in the frequency in mHz format (i.e. entry of a decimal point is required) and pressing Enter. The radio can be tuned by placing the cursor beneath the desired digit of the frequency display (readout to 10 hertz) and pressing the up or down arrow keys. There is no provision for tuning in user-defined steps, such as 5 kHz. There is no support for using a mouse to move the cursor. There is also no provision for adjusting the rotary controls on the R8's front panel, such as PBT, RF or AF gain.

I initially had trouble getting R8PC to talk to my R8, but I suspect that it was due to my serial port/internal modem setup rather than a bug in the program. I have to use the Utility screen to toggle between COM1 (my serial port) and COM3 (my modem which uses the same interrupt as COM1) when I start R8PC for the program to recognize the receiver. I have had no other problems with running R8PC. The front panel interface works smoothly, once one gets used to the way functions are selected. I found that using the highlighted letter to select the desired function is quicker than moving around the screen with the arrow keys. I would really like the capability to tune in 5 kHz steps, but scanning the bands in one kHz steps is not too slow. I really enjoy the "DOS Window" function which allows exiting and re-entering the program without shutting the receiver down - this lets me do other things on the computer, but jump back to receiver control at any time. I don't have Windows and so don't have multi-tasking capability. I did find that R8PC's memory channels got "confused" unless the directory the program resides in was reselected after working in a different directory via the program's "DOS Window".

MEMORY MANAGEMENT

R8PC allows for the storage of 10,000 frequencies in memory channels. Each channel stores not only the frequency, but also all front-panel settings that can be computer controlled (i.e. AGC, bandwidth, etc.) as well as a 20 character alphanumeric label assigned by the user. Once a channel is stored, it can be viewed/recalled in one of three ways. One is to select the channel field on the main screen and using the left/right arrow keys to scroll through the memory channels. The next method is to press the "F3" key from the main screen which displays the memory channels nine at a time, giving all the settings for each channel. The last way is selected by the "F4" key which displays 100 channels at a time in a 10 by 10 grid. Each position on the grid gives the first six characters of the channel label. The cursor can be moved to display the frequency and full label for each of the channels in the grid. There is no way to search the channel list for a given text string or frequency. For "hands-on" operating, blocks of 100 memory channels can be downloaded from the computer into the R8's internal memory. There is no provision for importing lists of frequencies from other database programs, such as Tom Sundstrom's SWBC Schedules database.

Memory scanning is handled via "memory lists" which are set up by the user. Each list can contain up to 100 channels and can be named; up to 100 such lists can be set up. This type of search can be very useful, for instance, a list could be set up for all known Indonesian broadcasters and searched for active channels when a band opening exists. Another use would be to set up a list of all BBC frequencies and the list could be searched for the frequency that gives the best reception at a given time. Once a list is selected for a search, the user defines how long the receiver will stop on each channel (0-59 seconds) or if the receiver stops and stays on active channels, number of cycles through the list (0-99 or continuous) and whether to create a log file to disk of channel, frequency, mode and date/time for active channels.

VFO SCANS

While the memory scan function worked very well for me, I had difficulty using the

VFO scan function of R8PC. This mode allows for setting up scans between two defined frequencies and up to 100 such scans can be defined. The user also defines mode, step size, pause time on each frequency and whether or not to write a log file to disk. The step size can not be defined by the user - the user can only select between the radio's normal and alternate step sizes, as listed in the R8 user manual. Despite carefully setting the radio's squelch control as outlined in the help screen for VFO scans, the radio would blow past known strong stations. Switching to USB/LSB mode didn't help. I was able to get semi-satisfactory results by adjusting the receiver's squelch control while the radio was actively scanning. I found this to be a critical adjustment.

TIMER ENHANCEMENT

R8PC expands the timer operation of the R8 by allowing up to eight separate on-off events to be programmed. These events are specified relative to the computer's clock and the program must be running for the events to be activated. Events can be one-time or repeated every 24 hours. There is no provision for setting the timers to turn on on a weekly basis, as on a VCR. The event timers are not checked if the program is suspended, as when working with another program via the "DOS window". However, if you are using R8PC, a warning comes on the screen 45 seconds prior to timer activation to allow you to finish your task or cancel the upcoming event. If no action is specified the timer event

will occur as scheduled, so unattended operation is supported.

R8PC also contains a world time screen which displays local time (based on the DOS clock), GMT and times for nine user-defined locations anywhere in the world. This is not really an exciting feature, but nice to have, especially since only local time is shown on the main screen.

DID R8PC CHANGE MY LIFE?

Not dramatically, although I do enjoy the program and have continued to use it after the initial evaluation period. I like being able to use a horizontally-oriented keypad to tune the radio, since my R8 is on the top shelf of my listening position. I also like the ability to retune the radio while I'm working on the computer, since my computer is greater than arm's length away from the radio. I am also slowly constructing memory lists of target stations to scan when the bands are open.

Would I buy the program? I think so, if I was looking for an R8 control program. It is relatively flexible and very easy to use. I asked around on some computer BBS's and could not find any shareware programs for the R8. There are a couple of other programs for the R8 that are in the same price range as R8PC, these being DX-COMM PLUS at \$59.95 and Scancat at \$49.95. I'm currently playing with the demo version of Scancat and a full copy of DX-COMM PLUS - details to follow.

THE 6TH INTERNATIONAL DX CONTEST "THE GRAND TOUR WITH CANCER AND CAPRICORN 1994"

The contest runs from Friday, April 15, 1994 at 1800 UTC to Saturday, April 30th at 2400 UTC. It's open to all shortwave listeners regardless of their membership in any club.

Primary contest frequencies are 2300 - 26100. Logs outside this range will be valued by half points. Contest fee: 4 IRC's, Deutsche Marks Dem 5.00, U.S. \$3.00, or GB £ 2.00 British Pound. Should be sent together with the contest form to:

Jaroslav Bohac
Jizerska 2900/11, 400 11, USTI,
N.L., Czech Republic

Deadline for contest entries is May 9, 1994. (Date of Post Stamp) Contest form is available at above QTH with either an SASE or 1 IRC.

Thanks to - Mark Humenyk, Ontario, Canada for this info

Using the NSA Tapes

Did you miss hearing the Radio St. Helena test transmission? Did you ever hear Radio Nibi-Nibi? Have you ever heard Mongolia? If the answer is "no" but you would like to try, now's your chance.

The National Security Agency (NSA) has been eavesdropping on the world for decades. Now, as a dividend from the ending of the cold war, ordinary SWLs can reap the benefit of NSA's high-tech approach to DXing the shortwave bands.

As government budgets shrink, the US Department of Defense and other government agencies have been searching for ways to beat their swords into plowshares. Researchers at Cornell University's bio-acoustics research program are tracking the sounds of whales far out in the Atlantic using an underwater network of microphones originally intended to monitor the movement of Soviet submarines. The US Navy used advanced digital signal processing techniques for years to filter out the sounds of whales to better hear the subs. Now scientists are flipping a digital switch and out come the sounds of whales minus the submarines. Researchers at the Scripps Institution of Oceanography are using the same network to measure ocean temperature changes as part of research into global warming. Seismologists are listening for belches from ocean-floor volcanoes. All this activity has been approved by the government in an effort to help the environment.

Not to be outdone, the NSA has decided to join this latest trend. The charter of the NSA has been to intercept and decode communications that might yield intelligence

information. They have conducted such intercepts using the best available technology from some of the most exotic locations on earth. Because they are not always listening on the right frequency at the right time, they have been recording all frequencies of interest for later computer analysis. Now those recordings are being made available to ordinary citizens. Historians will use the tapes to listen to events unfold as they were reported by VOA and Radio Moscow. They will also be used by scientists doing propagation studies. With a little work and support by the NASWA membership, they can be used by SWL's to relive the experiences of DX days gone by.

Ever since the invention of wideband analog tape recorders in the 1950's the NSA has been using them to record large segments of the radio spectrum. These recorders are similar to video tape recorders except they do not need the video sync pulses for speed stabilization. The VCR in your living room is capable of recording a couple of MHz of bandwidth. The recorders used by NSA can take in a full 10MHz at a time.

A typical NSA listening post is shown in Figure 1. Signals from the antenna are amplified in a broad-band, high-power amplifier with sufficient gain to drive the wideband video input of the recorder. All frequencies in the 100KHz to 10MHz range are recorded simultaneously for later analysis. At the same time another recorder is recording the 10 to 20 MHz range by using a downconverter to translate the frequency spectrum into the range the recorder can handle. This process was repeated at sites scattered all across the Asian continent.

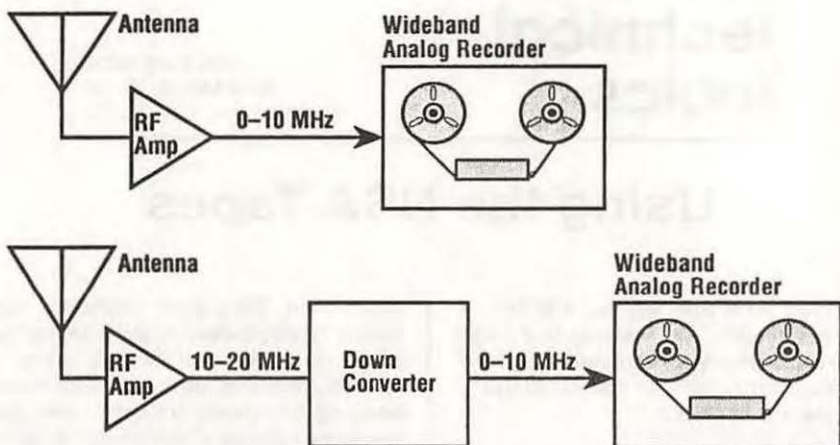


Figure 1. NSA recorders capture all signals received by the antenna simultaneously.

A reverse process is used to play back the tapes as shown in Figure 2. The wideband video output is applied to a multicoupler which divides the signal and routes it to 30 receivers simultaneously. Those receivers can be tuned to any signal in the output of the tape playback amplifier.

NASWA is considering purchasing one of these playback units for installation at a central location. Members who support this project will be permitted to connect a receiver of their own to one of the 30 multicoupler ports. They can either come to the central location to do their time warp DXing or they

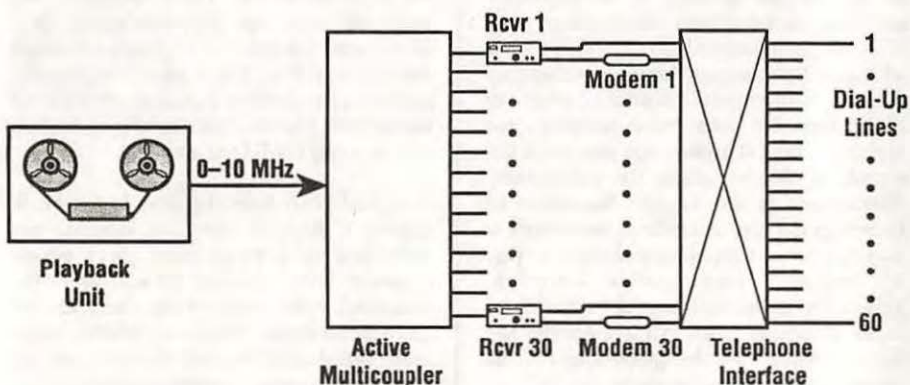


Figure 2. Wideband playback provides a broad spectrum of signals to each of 30 receivers at one time.

can control their radio remotely. Using a modem and the digital control access on the receiver, a home computer can control the radio over a phone line from the comfort of your own home. Several members may wish to band together to share one of the 30 ports and the costs. The plan is to have a schedule for playback of certain tapes at certain times. These schedules will be published monthly in the NASWA Journal. Details of the scheduling plan are still being worked out.

The NASWA Awards chairman, Dr. DX, has indicated that countries heard via this method will count for special awards. "Heard All 1963" is typical of awards that will be available to SWLs hearing 100 countries that existed in 1963 but have since disappeared. If you have ideas for further awards let him know. His address is on the back cover.

Now comes the hard part. Used playback units and multicouplers are available on the surplus market for about \$15,000. Obviously NASWA has not been able to accumulate that much of a kitty, what with Bob Brown's kids needing new shoes every year, so NASWA is appealing to you the members.

NASWA is planning to sell access rights to each of the 30 ports for \$500. Members are also free to purchase additional multicouplers to further divide the signals to allow more people to share in this extraordinary experience at a reduced rate. The multicouplers are seen at radio flea markets for prices around \$50.

If you would be interested in being one of the first 30 members to gain access to this new world of radio time travel, you need to indicate your support now. When the ports are gone there won't be any more unless someone individually decides to further subdivide the signals. Remember though that the best, noise-free signals will go to those whose receivers are connected to the first multicoupler.

Do not send money at this time. NASWA first needs to know if there are 30 members out there willing to pledge \$500 each to making this project a reality. If you are interested, let Bob Brown know. His address is on the back cover. He hopes to have this project up and running by April 1, 1995.

That's all for this month. Until June, stay tuned.

FOR SALE: Drake R-8 in excellent condition with matching MS8 speaker, manuals, and original boxes. \$775.00. "Review of International Broadcasting". Complete collection from issue #1 (Feb. 1977) to #146 (Jan. 1994). Good reference source to SW broadcasting during this period. \$100.00 or best offer. "DX Listening Digest". Complete collection from issue #1 (Oct. 1985) to #33 (Apr. 1991). \$50.00 or best offer. "Monitoring Times" from Jan. 1990 to Dec. 1993. \$35.00 or best offer. "Speedx" from Apr. 1972 to Dec. 1983 (missing May 1976). \$50.00 or best offer. "Proceedings", '88, '89, '90, '91, '92/'93. \$15.00 each or \$60.00 for all five. Tom Gavaras, 66 Hackberry Hill, Long Lake, MN 55356. Phone (612) 476-6897.

NASWA Awards

Dr. Harold Cones
2 Whits Court
Newport News, VA 23606
Compuserve 71570,411



Well, here we are again! Spring has sprung in my part of Virginia and I am getting anxious to be outside and get my hands in the dirt. The warmth also means the end of Pacific DX and, as I do every year at this time, I pledge to do better at the radio next season. I have wanted to concentrate on the Indian subcontinent for some time and will get organized to do that in the fall. As part of my organization, I looked at the Indian award requirements and will share that information with you under Featured Award of the Month.

Here at Awards Central things continue to go slowly with activity at an all time low. A few hardy souls have sent their applications along and will be the latest to impress their friends and neighbors with their radio abilities:

- Paul Buer 55 endorsement/Senior Ecclesiastic DXer
- Charles Gaharan Senior Ecclesiastic DXer
- Jerry Klinck South American DXpert
European Continental DXpert
All VOA DXer
180 endorsement/Senior DX Centurion
- Steven Lare Master Indonesian DXer
- Ed Poston European Senior DXer
World Wide DXer
International DX Listener
- John Sgrulletta Master Papua New Guinea DXer
- Jim Vecchiola European Senior DXer
DX Centurion
- Robert Weiss All American DXer

FEATURED AWARD OF THE MONTH

Sitar music, tigers and maharajahs, the minds eye images and sounds of India. Much more accessible than in the "old" days, India is now a popular travel destination and Indian restaurants are found in many cities of the world. All India Radio (AIR) began broadcasting on shortwave to the rest of the world some time ago and recent new transmitter sites with increased power have brought their programming to new audiences. Reception in North America, however, is often difficult due to propagation and India still represents a real DX challenge to the shortwave listener.

NASWA recognizes this DX potential by including two awards in its stable: the Subcontinent DXer for verifying one Indian shortwave broadcast station in five of the Indian states or territories, and, the Master Subcontinent DXer for verification of at least one Indian shortwave broadcast station in ten of the Indian states or territories. The key to this award, of course, is not only hearing the stations but identifying the Indian states and territories. I am unable to help you hear all the AIR transmitters, but I can help by providing you with the state list.

STATE

Andhra Pradesh
 Assam
 Bihar
 Gujarat
 Haryana
 Himachal Pradesh
 Jammu and Kashmir
 Karnataka (Mysore)
 Kerala
 Madhya Pradesh
 Maharashtra
 Manipur
 Meghalaya
 Nagaland
 Orissa
 Punjab
 Rajasthan
 Sikkim
 Tamil Nadu
 Tripura
 Uttar Pradesh
 West Bengal

CAPITAL

Hyderabad
 Shilong
 Patna
 Ahmadabad
 Chandigarh
 Simla
 Srinagar
 Bangalore
 Trivandrum
 Bhopal
 Bombay
 Imphal
 Shilong
 Kohima
 Bhubaneswar
 Chandigarh
 Jaipur
 Gangtok
 Madras
 Agartala
 Lucknow
 Calcutta

TERRITORY

Andaman and Nicobar Islands	Port Blair
Arunachal Pradesh	Zio
Chandigarh	Chandigarh
Dadra and Nagar Haveli	Silvassa
Delhi	Delhi
Goa, Daman and Diu	Punjim
Lakshadweep	Kavaratti
Mizoram	Aijal
Pondicherry	Pondicherry

Now all you have to do is get out your WRTH and a good map of India, locate each station, then draw up your battle plan. If all goes well, by this time next year you will have a NASWA subcontinent award plugging the holes in your shack wall. I will look forward to hearing from you!

And by the way, the Seventh (!) Annual Winter SWL Fest was a great gathering. For me, it is like a family reunion. I certainly enjoyed visiting with many of you and will look forward to seeing you again next year.

Switching hats, I have been receiving entries for the 1994 North American DX Championships and am amazed at how hard many folks worked on this contest. If you did not enter this year, consider it next year. The contest provides a good focus for your hobby activities and gives you a chance to win a beautiful plaque or trophy to impress your friends who have no idea what you do in that little radio room but you must be awful good at it because you won a trophy.

Enjoy spring! I will see you next at the beginning of summer.

Listener's Notebook

Hans Johnson
7529 Red Cravat Court
Columbia, MD 21046
CompuServe 73042,3644

COPYRIGHT NOTICE—Items credited to Summary of World Broadcasts are copyright by the BBC Monitoring Service and may not be reproduced without BBCMS permission.

All times are in UTC and all frequencies are in kiloHertz.

DEADLINE for the May *LN* is Friday, April 29th

FEEDBACK contributions and comments are welcome at any time.

GRAPHICS, MAPS and PICTURES would allow *LN* to be spiced up a bit but would result in less information to you. If you would like to see graphics, etc. in *LN*, let me know. If you don't want it, let me know. (HJ)

BELGIUM—*Radio Vlaanderen International* 11640 relays the domestic service, Wednesdays and Sundays only from 1930–2115. (Buschel Shortwave News March)

BELIZE—*Radio Belize* 3285 is off, and given the highly developed FM network here, is unlikely to return. (HJ Belize)

BENIN—Sudan Interior Mission has applied for a shortwave license here for a 10 kW station as part of their decentralization program following the destruction of the first *ELWA* in Liberia. (SIMNOW via Marlin Field)

BIAFRA—Here's a bit of radio history (HJ): The short-lived *Radio Biafra* was once Africa's most widely reported and mostly widely sought after shortwave station among Dxers, SWLers and professional monitors. Its story began on 30th May 1967 when the Eastern Region of Nigeria (which had been an independent country of federal regions since 1960) seceded from the Nigerian Federation and declared itself to be the independent state of Biafra. The Eastern region of Nigeria had regarded itself and had also been regarded by others as the most prosperous region of Nigeria and the one most able to become self-sufficient, so a declaration of independence was not an unexpected outcome. However, the subsequent invasion of Biafra by Nigerian

forces a few weeks later marked the start of a 2 1/2 year long civil war. The course of the war was followed by television crews from around the world, and the immense suffering and destruction it wrought was brought home to millions of people abroad on their TV screens. But political observers, professional monitors and DXers and shortwave listeners eagerly sought the broadcasts of *Radio Biafra*, the voice of the self-proclaimed independent state of Biafra. The day after the secession of the Eastern Region of Nigeria, and its declaration of independence as the state of Biafra, *Radio Biafra* began its career with an untruthful news broadcast claiming that five foreign countries had already recognized Biafra as an independent country. But despite this early blunder, the station soon gained an influential international audience and became regarded as a credible source of news. The station owed much of its impact to its powerful speaker Olonkom Ndem (who became known as Biafra's Lord Haw Haw) and also the equally powerful voice of the Biafran leader himself, Colonel Ojukwu, who made frequent broadcasts on the station. Among its influential friends and well-wishers abroad, *Radio Biafra* retained as its adviser Frederick Forsyth, the novelist who was author of "The Day of the Jackal" and "The Odessa File". Forsyth later wrote his personal account of the war, "The Biafra Story" in which he claimed that Biafran listeners to the *BBC* were

astounded at the misrepresentation of the Nigerian situation presented in BBC broadcasts, and became convinced that *BBC* had a strong pro-Nigeria bias. However, another author, John de St. Jorre, in his impartial account "The Nigerian Civil War", wrote that both sides in the Nigerian conflict listened avidly to the *BBC*, and together with the *VOA* regarded it as the most reliable source of daily information. *Radio Biafra* relied heavily on the public relations lobbying of the firm Markpress run by William Bernhardt. The allegations of genocide committed by the Nigerian forces against the Ibo people of Biafra aroused public hostility around the world. The footage from television cameras following the war continued to gather support for the Biafran cause and on some occasions showed the operations of *Radio Biafra*, which continued to accuse the British, the Americans and the Russians of ganging up against them. On one occasion television film of the cold-blooded killing of a Biafran prisoner by Nigerian forces led to British dockers refusing to handle ship loads of arms bound for Nigeria. The station operated two transmitters with different services in English, Hausa, Yoruba, and Ibo—a Home Service on 4960 and an International Service on 6145. Biafra Radio continued to operate throughout the war until the end. Within a few weeks of the outbreak of fighting in 1967, the Biafran capital of Enugu fell to federal Nigerian forces, but *Radio Biafra's* two transmitters remained on the air. Whenever the Nigerians threatened, *Radio Biafra's* transmitters were always the first strategic installation to be moved to safety. However, in the latter stages of the war, only one transmitter remained on the air, being finally silenced when Biafra capitulated on 12th January 1970. (Mike Burden Contact December via Richard D'Angelo)

BOLIVIA—*Radio 9 de Abril* 3200.4 has been inactive since early March. (Jones Numero Uno No. 1263 March 18th)

Radio Emisoras San Joaquim 4508 a new one, seems to sign on around 2250 and is located in Beni department. (Pretti Radio News Electronic Edition No. 16 March 13th) On until 0230. (Jones Numero Uno No. 1263 March 18th) see January *LN*.

La Palabra 4732.2 is operating here. Sign off at around 2345. They have a church service but the mike level is so low that it is never possible to identify the station. (Jones Numero Uno No. 1260 February 25th) They were inactive from February 18th until March 23rd when they returned with much better modulation and stayed on until 0045. Try at 0015. (HJ)

Radio Grigota 4830 has reactivated and is heard every day but Sunday until 0000. (Jones Numero Uno No. 1263 March 18th)

Radio 16 de Marzo 4862.6 alternating with 4864.5 (ibid.)

Radio Sararenda 4884.7 signs on at around 1000. (Jones Numero Uno No. 1260 February 25th)

Radio Minería 4985.3 reactivated but on reduced schedule. Heard at 1030 and again from 2330. (ibid. No. 1263 March 18th)

Radio San Miguel 4925.6 now signs on at 0900, ex 1000, for its weekday transmissions. (ibid. No. 1260 February 25th)

Radio Galaxia 5065.3 seems to have moved here from 5156. Heard every day except UTC Mondays until 0200 sign off. (ibid. No. 1262 March 18th)

Radio Luz del Oriente 5500.4 reactivated and heard weekdays until 2200 and later on weekends. (ibid.)

Radio San Jose 5580.2 now has a regular transmission Monday–Friday and closes at 0000. (ibid.)

La Voz del Tropico 5934.6 reactivated after being off for a month. (ibid. No. 1260 February 25th)

Radio Intergracion 6119.3 now settled here, ex 6122. (ibid.)

Sudan Interior Mission has applied for a shortwave license here for a 10 kW station. (SIMNOW Spring via Marlin Field)

BOSNIA—HERCEGOVINA — *Radio Bosnia-Hercegovina* (the Bosnian government station in Sarajevo) 6890 new frequency, ex 7060v. In another change, the shortwave transmitter is now operating in AM mode,

rather than upper sideband as was the case before. (BBCMS Summary of World Broadcasts No. 8 February 25th)

see YUGOSLAVIA

BRAZIL—*Radio Cabocla* 4845.2 is operating here but rarely ids. (Jones Numero Uno No. 1260 February 25th)

Radio Jornal do Brasil 4875 has left shortwave. (Play Dx No. 780 March 6th)

Radio Cancao Nova 9675 gave the following new address: P.O. Box 15, 12630, Cachoeira Paulista, Sao Paulo. (Wilkins Numero Uno No. 1262 March 11th)

CAMBODIA—*Home Service* is inactive on 60 meters but is still noted on 6090 at 1220. (Foster OZDX No. 89 March)

CAMEROON—The state of the shortwave transmitters is poor here. From a network of several stations in years past, only Garoua on 5010 has been noted as of late. According to James Achanyi-Fontem of Cameroon Link, the remaining stations are being repaired or overhauled. He stated that they will use FM during this period but that they will be back. So the following are off:

Buea	3970 (? only one report of this one) 6005
Bafoussam	4750 5955
Bertoua	4750 7165
Douala	4795 7150
Yaounde	(Centre) 4972.5 7205 (National) 4850 6060 (International) 9745

(HJ March 20th)

CHAD—*Radio Moundou* 5286 has been noted by several Dxers signing on at 0500. I haven't seen any reports of this one in years prior to this so get it while its on. (HJ March 20th)

CHINA—*CPBS* is trying to upgrade its means of radio programme transmission to improve its reception in outlying and mountainous areas. For some time listeners in Fujian, Guizhou and Guangxi have complained about poor signals from CPBS broadcasts, particularly Programme Two.

While CPBS programs can be received in all parts of the country, extensiveness does not mean clear reception everywhere. The main reason is the poor quality of broadcasts at their source. Because CPBS's broadcast centre is located in Beijing, it first transmits its programmes to various localities across the nation where they are retransmitted. Poor reception usually occurs in outlying or mountainous areas that don't have microwave or satellite-receiving facilities and thus can only receive the programs via shortwave. Now, a new satellite receiving device developed especially for use in receiving and demodulating CPBS programmes transmitted via the "Chinasat-5" satellite. After its launch, listeners in our outlying and mountainous areas will all be able to tune in more clearly to CPBS' various sets of programmes. (CPBS information in BBCMS Summary of World Broadcasts No. 10 March 11th)

Heilongjiang PBS Main Program 4840 2055-0540 0840-1500 *Economica* Station 0400-1300 5950 Korean 0000-0400 5950 Sundays 0200-0400 2100-2300 5950 except Sundays. (BBCMS World Broadcasts Schedules No. 7 February 18th)

CLANDESTINES—AFRICA—*Voz de Renamo* Germany will provide Renamo with a non shortwave radio transmitter in the near future. German technicians were to arrive in Maputo by the middle of February to assess conditions for the installation and operation of the transmitter. (BBCMS Summary of World Broadcasts No. 7 February 18th) A Renamo official said they have given up a shortwave radio project which broadcasts from Maputo "because it was somewhat informal, and so we gave it up". Specialists say the project was "a fiasco" although it attracted people connected with radio broadcasting in the country's capital. (ibid. No. 9 March 4th) This means the end of the relay via *Swazi Radio* (0400 6155) which Renamo claimed was via Maputo. Congratulations to Ron Howard for getting the only QSL from this short-lived relay. (HJ)

Radio Muhabura is on from 0400-0530 on 6275v and in the afternoons until 2005 on 6285v. There is English news at 1900 and transmissions often run late. (BBCMS World Broadcasts Schedules No. 9 March 4th)

A Voz da Resistencia do Galo Negro James Pogue verified this station a week after calling them. Try Jaime Vila Santa, Free Angola Information Service, 1629 K Street NW, Washington, DC 20006. (Fine Tuning No. 726 February 12th) See past *LN*s for schedule. (HJ) Station has been noted as late as 2236 on 7290. (Brian Alexander March 13th)

According to **Radio Monte Carlo**, a Libyan opposition official said that on March 13th, a radio station of the main Libyan opposition faction, the National Front for the Salvation of Libya, began transmitting programs to Libya from an unnamed Middle Eastern. The station will urge Libyan to struggle to topple Qadhafi and set up a democracy in Libya. The National Front for the Salvation of Libya previously operated the, **Voice of the Libyan People**, which broadcast from the Sudan from 1982-1985 and from southern Chad from 1987 until 1991.] (BBCMS Summary of World Broadcasts No. 11 March 18th) No word on times or frequency, but in late 1989 they were on the following schedule: 0700 and 1500 on 11825 and at 2200 on 9500 15700. The latter was well heard in North America, harassed by the Libyan "race car" jammer. Their address then was: Al-Inqad 323 S. Franklin Box A-246, Chicago, IL 60606-7093. (HJ March 20th)

National Radio of the Saharan Arab Democratic Republic 11800, a new frequency, but still announcing 11320. Heard as late as 2355 and as early as 0600 in Arabic and Spanish. **National Radio of the SADR** broadcasts in support of the Polisario Front, which opposes Moroccan policy on Western Sahara. (BBCMS Summary of World Broadcasts No. 11 March 18th)

Radio Freedom, the station of the African National Congress, ceased transmissions via **Radio Tanzania** sometime in 1993. (BBCMS World Broadcasts Schedules No. 7 February 18th)

Radio Free Somalia 7485 from 1000-1100 and 1600-1700. (IARN January 30th via John Norfolk February 22nd)

CLANDESTINES — ASIA—Voice of the Great National Union Front of Cambodia, the pro-Khmer station, now has Thai transmissions from 0130-0200 and from

1330-1400 on 5408. This new program replaces the rebroadcast of the policies of the Cambodian National Union Party. (BBCMS Summary of World Broadcasts No. 10 March 12th)

Voice of Free Tajikistan, which broadcasts in Tajik and Russian in support of various Tajik opposition groups based in Afghanistan such as the Islamic Rebirth Party, now broadcasts on 7090v and 3540 at 0200 0500 and 1300. (BBCMS Summary of World Broadcasts No. 9 March 4th)

CLANDESTINES—EUROPE—Radio Dnestr International 9620, a new frequency, from 2130-2200 in English. The International Telecommunication Union's Tentative HF Broadcasting Schedule for the D-93 period (7th November 1993 to 6th March 1994) shows a registration for a 1,000 kW transmitter at "Kishinev" on from 2130-0700 GMT. The "Kishinev" transmitter site is in fact believed to be near Grigoriopol in the separatist-controlled Pridnestrovye region of Moldova. (BBCMS Summary of World Broadcasts No. 8 February 25th)

CLANDESTINES — LATIN AMERICA—Radio Patria Libre 6530 noted on this new frequency at 0040. (Dave Valko March 2nd) This radio station was first traced on 27th October 1988 with broadcasts hostile to the Colombian government. **Radio Patria Libre** has described itself as the *Voice of the new Colombia—a voice for the Camilist Union Army of National Liberation* [ELN] and claims to broadcast from "encampments in the new Colombia". The broadcasts are sometimes shadowed by a radio station hostile to the ELN, **El Pueblo Responde**. Their complete schedule is 0030-0110 6530 1130-1210 6260 (repeat of 0030) 1330-1410 Sundays 15050 1500-1540 Sundays 6660. (BBCMS World Broadcasts Schedules No. 7 February 18th)

Radio Marti According to Prensa Latina news agency in Havana on 11th February: Cuban organizations in the United States warned today that the US government's office in charge of broadcasting propaganda against Cuba is effectively in the hands of extremist groups created in that community during the

Republican administration of Ronald Reagan. The government of President Clinton this week appointed Richard Lobo to head the so-called *Radio and TV Marti* stations. Lobo is said to be an ally of the groups that are hostile to the Cuban revolutionary system. The Cuban-American Foundation immediately expressed its support for Lobo and stated that the Cuban community should be very proud of Washington's appointment. Groups opposed to the opponent see Lobo as a "Foundation man". This organization was created during the years of the Reagan administration, when the biggest aggression against the Cuban revolutionary government was carried out. "Nothing that comes from that stock can elicit my admiration or pride," said Andres Romero of the Cuban-Americans for Dignity Organization, during a telephone conversation from Miami. According to Romero, Lobo's appointment is in response to the efforts of political sectors in Washington that are interested in obtaining an "extremist-styled" solution to continue making money with the broadcasting of hostile propaganda against Cuba. (BBCMS Summary of World Broadcasts No. 8 February 25th) The station has put additional transmitters on the air to combat increased Cuban jamming. (Dan Ferguson March 23rd)

Radyo 16 Desanm 15420 new frequency to Northeast North America from 2200-2300, ex 7355. Via *WRNO*. (Jeff White March 22nd)

CLANDESTINES — MIDDLE EAST—*Voice of Rebellious Iraq Sawt al-Iraq al-Tha'ir* (Arabic); *Dangi Iraqi Shurashgar* (Kurdish) The radio is hostile to Saddam Husayn and the government of Iraq and supports a popular uprising. The radio supports the Iran-sponsored Shi'i Supreme Assembly of the Islamic Revolution in Iraq (SAIRI) under Muhammad Baqir al-Hakim. SAIRI also prepares programmes for *Voice of the Islamic Revolution* in Iraq. Their schedule is 0330-0600 1230-1430 1600-1830 on 5555 and their address is: Iran, Tehran, PO Box 1959/14155. (BBCMS World Broadcasts Schedules No. 7 February 18th)

Radio Freedom-News Centre of Free Iraq Idha'at al-hurriyah, Markaz Akhbar al-Iraq al-Hurr (Arabic) 11695 Unconfirmed on this frequency between 2200-2353. (ibid. No. 8 February 25th)

Voice of Iranian Kurdistan Ayra Dangi Kurdistan Irana (Kurdish) 4370 Heard on this new frequency at 0215 with Kurdish music. Id as above at 0230. The easiest Middle Eastern clandestine to hear. (HJ March 22nd)

Voice of the People of Kurdistan, which broadcasts on behalf of the Patriotic Union of Kurdistan (PUK) began carrying programmes in Arabic at 1600 from *Voice of Iraq—Iraqi Broadcasting Corporation*, which describes itself as "the radio of the Iraqi opposition in London" Programmes from this station have been heard via *Voice of the People of Kurdistan* since December 1992. (BBCMS Summary of World Broadcasts No. 9 March 4th)

The Voice of Independent Kurdistan Aira Dangi Kurdistan Sarbakhoya (Kurdish) *Burasi Radyo Kurdistana Sarbakha* (Turkish) 7420v the station of the Kurdistan Workers' Party (PKK) is on in Arabic, Turkish and Kurdish from 0700-0800 0900-0940 and 1400-1600. A Turkish paper reported that this station is located in a PKK camp in Northern Iraq. (BBCMS World Broadcasts Schedules No. 11 March 18th)

CLANDESTINES — PACIFIC

According to a *Radio Australia* report: The people of Bougainville might be short of most essential items, but they have an increasing number of radio stations to listen to. The Wingti government is spending about 75,000 [Australian] dollars of Bougainville restoration programme funds on setting up a government propaganda station but, as Sean Dorney reports, the station might be illegal. [Dorney] Bougainvillians already have one government-funded radio station to listen to—*Radio North Solomons*, run by the *National Broadcasting Commission*, the *NBC*, which has an independent charter somewhat similar to that of the *ABC*. But *Radio North Solomons*, which had to abandon its original facilities in Kieta in central Bougainville in 1990 and operated out of Rabaul until shifting back to Buka Island about a year ago, is apparently too independent for the Wingti government. (see **PAPUA NEW GUINEA**) This new radio station, which is to be called *Radio Bougainville*, is going to be quite different to *Radio North Solomons*,

according to the Papua New Guinea [PNG] government's daily information release, *Bougainville Today*. It says the new station's objectives will differ from the *NBC's* station in that it will enable the people to hear government news and what it calls awareness programmes. The station is to be located at Lohoho in central Bougainville not far from the areas of the island still under the control of the BRA, the Bougainville Revolutionary Army.

The BRA station, *Radio Free Bougainville*, has been a severe irritant to the government for quite some time now. It broadcasts rebel propaganda—much of it wildly exaggerated accounts of military encounters in which the BRA inevitably killed the PNG troops, while its own men miraculously escaped injury. However, it does have some good sources in areas nominally back under PNG government control, and occasionally causes the PNG military some embarrassment by revealing details of proposed military operations and even military briefings. The idea of the government's station seems to be to counter that rebel propaganda. Needless to say, the *NBC* is not too happy about having a government-funded station competing with its *Radio North Solomons*, and the *NBC* chairman is in a position, at least on paper, to do something about it. Some years ago, the chairman, Sir Alan Tolola, was given sole authority to approve or disapprove of any new radio station in PNG. He has not given his approval to the new government propaganda station. So, when it does go to air, unless the government provokes his present authority over such matters, the government's station won't be legal. (BBCMS Summary of World Broadcasts No. 7 February 18th)

The new station started testing in late February on 3880 from 0730 until 1205. From 2245 until 0730 the station has been noted on 6010 or on 6020. It has been IDed as *Radio Unity* or/and *Radio United Bougainville*. Note that *Radio Free Bougainville* moved to 3870 over a year ago to escape jamming but recently returned to 3880 and is on from 0800–1000/1100. So both stations are on the same frequency from 0800–1000/1100. (IARN February 13th and 28th via John Norfolk and

David Martin via David Clark March 12th and BBCMS Summary of World Broadcasts No. 8 February 25th and No. 9 March 4th)

COLOMBIA—*Radio Catolica* 3580 heard until 0343 saying they would return at 0900. (Viloria Shortwave News March)

CONGO—*RTV Congolaise* inactive on 60 meters but heard on 5985 at 0357 signing on. (Schulze Fine Tuning No. 728 February 24th)

COSTA RICA—*Radio Reloj* has a news address: P.O. Box 4334. (San Gil Shortwave News March)

RFPI 9400 this transmitter is off the air, but was scheduled to reactivate around March 27–28th. (Brian Alexander March 20th)

DOMINICAN REPUBLIC—*Radio Quisqueya* 6235 new frequency noted both mornings and evenings. Ex 6205. (Berg Numero Uno No. 1259 February 18th)

ECUADOR—*Radio Ruanacunapac Yachana* 2967 stated that their mediumwave transmitter was out of order when they were heard in January 1993. They were pleased with the response; however, and have applied for a shortwave license. (Klemetz Numero Uno No. 1259 February 18th)

Radio Paz e Bien 4819.7 is selling their shortwave transmitter. (ibid.)

GEORGIA—*Georgian Radio* stated the following on February 18th: We are breaking with tradition and, before starting the news bulletin, we would like to remind the ministry of communications that, as well as not operating in various regions of Georgia, the radio is also not working in Tbilisi either. Our editorial staff continuously get telephone calls from citizens who complain that Tbilisi radio's first programme cannot be heard on the local network wired radio and very often by wireless, either. Officials of the communication service blame the electric power shortage for this. We would like to remind them once again that Tbilisi radio could only be heard with difficulty even when the power supply was normal. You must

realize what the situation is in the republic. There is no electricity, no heating, water taps are often dry, there is no gas, the population is not able to watch TV programmes, telephones are cut off frequently, to say nothing of economic hardships. What can be done must be done. Incidentally, I reiterate, even when the power supply was normal *Georgian Radio* was difficult to hear in Tbilisi and could hardly be heard in various regions of Georgia. The issue of the republic's communication services should obviously become a subject of serious consideration in the government. (BBCMS Summary of World Broadcasts No. 8 February 25th)

GERMANY—*SFB Berlin* 6190 is no longer relayed here via *Radio Bremen*. (ORF Shortwave News March)

GUAM—*KSDA* advises that they signed a contract with *Continental* for a third 100 kW transmitter, to be installed in June and operational by August 1st. (Bob Padula February 15th)

GUATEMALA—*Radio Maya* 2360 continues to use this frequency on an irregular basis. Heard as early as 1214 and as late as 0018. (HJ Belize)

La Voz de Nahuala 5040 is inactive on this frequency. (ibid.)

GUYANA—*Voice of Guyana* 5950 has verified via this address: 68 Hadfield St, Logde, Georgetown. The signer was S. Goodman, Chief Engineer. (Pogue Fine Tuning No. 726 February 12th)

HONDURAS—*Radio Litoral* 4830 HR(M)W is the callsign. They usually sign on shortly after 1300 but are only on about one day in three. They were heard as late as 2248 though. (HJ Belize)

INDIA—*AIR Shillong* 4970 has been operating here since February 1st according to the station. This frees up their old frequency of 4790 for reception of *Azad Kashmir Radio* via Rawalpindi in Pakistan. One of the reasons they left 90 meters was because of complaints

from listeners whose sets did not cover that band. (Howard Numero Uno No. 1260 February 25th)

INDONESIA—Unidentified Indonesian stations have been noted on 2418 2439 2881 2997 3031. (Foster Numero Uno No. 1263 March 18th)

RRI Bukittinggi 3231.8 may be altering between here and 4911v (David Clark February 24th)

RRI Dili 3306.35 has been missing for several weeks now. (ibid. February 26th) Awaiting new tubes? (Foster Numero Uno No. 1263 March 18th)

RRI Tanjung Karang 3395.1 I am sure this transmitter has been tuned up recently and it has regained its bellwether status for 90 meter band Indo conditions. (Clark Numero Uno No. 1261 March 4th)

RSPKDT2 Maluku Tengah located in Masohi, is a new *RPD* first-noted February 23rd on 3578.3 with 'lagu hiburan' [EzL orchestral type of music] and greetings to listeners from 1000+. Signoff on Mar 4th at 1418 included an ID and frequency anmt of 3578 + FM. Masohi is on the island of Seram, less than 100 km northeast of Ambon. (Foster Numero Uno No. 1263 March 18th via World Radio Report Dx Ontario April) At least 1 kW into a good antenna. (David Clark March 24th)

RRI Banda Aceh 3904.8 tentatively is operating irregular now. (Clark World Radio Report Dx Ontario April) They have been off since last August and cannot afford a new valve for the transmitter. The transmitter they used on 4955 is damaged so they are only on 2432 with 1 kW. (Lohuis Shortwave News March)

RRI Pontianak 3915 shifted to here from 3995 in the beginning of March. (David Martin via David Clark March 12th)

RRI Medan 4765.8 back on the air after several weeks' absence and apparently alternating with 3375.7; heard at 2256. (ibid. February 24th)

RRI Nabire 5055.4 has reactivated; heard at 1225. (ibid.)

RRI Sibolga 5256 gives their power as 5 kW in a verification letter. (Richard "Quake" D'Angelo Numero Uno No. 1260 February 25th)

RPD ? 5497 An Indonesian is being noted here until 1200 sign off and is probably an **RPD** which is believed originating from Irian Jaya. (David Martin via David Clark March 12th)

RRI Samarinda 6590.8 heard on this second harmonic of 3295.4 at 1344. (Foster Numero Uno No. 1263 March 18th)

RRI Serui 7173.2 heard here instead of 4606.4 since early in February until around 1400. Look for the 41mb signal to fade up optimally 15-30 minutes AFTER your local sunrise. USB will usually be best, depending on the proximity of ham QRM. At times the signal has been strong enough that it makes me wonder if something stronger than the listed 500 watt transmitter is being used here. (Dave Clark World Radio Report Dx Ontario March) I am taking bets that there is a new transmitter here in the 5-10 kW range. (Clark Numero Uno No. 1261 March 4th) Look for them on 4606 before 1200. (David Martin via David Clark March 12th)

Another outlet that switched frequencies for the local evening transmission in early February was **RRI Manado**. First noted by Tony Orr, the station was on 5987.62 (nominal 5990) and was heard as late as 1415. They relay Jakarta news at 1300. On February 21st they returned to 3214.8 (Clark Numero Uno No. 1261 March 4th, Foster World Radio Report Dx Ontario April) David Foster observes that temporary replacement of Tropical Band channels with higher, typically daytime operating frequencies has become almost commonplace amongst the Indonesians. Since last November, this kind of rotation has been noted in respect of **RRI Manado** as above, **RRI FakFak** (4789.6 / 7231), **RRI Sorong** (4874.6 / 9742) and **RRI Serui** (4606.4 / 7173.2). (Foster *ibid.*)

RRI At Lhokseumawe a new station located between Banda Aceh and Medan is under construction and is expected to be completed in 1995. (Lohuis Shortwave News March)

ITALY—Tele Radio Stereo 6012 Dario Monferini is the QSL manager for this station. Send your reports with 1 dollar to: Dario Monferini, via Davanzati 8, 20158 Milano, Italy (Monferini February 27th)

LATVIA—Radio Latvia 5935 is used weekdays from 2130-2135 in English and 2135-2140 in German. (BBCMS World Broadcasts Schedules No. 7 February 18th)

LIBERIA—Radio ERLR 6090 is a new station located in Gbarnga that has been testing since February 27th in English. Ids as: *Radio ERLR, the radio service of the Liberia Communication Network.* 6090 was previously used by the radio in Gbarnga belonging to the National Patriotic Front led by Charles Taylor. The station is also supposed to be on unconfirmed 3255. **Radio ERLR** is owned and operated by International Promoters and Associates, and licensed under the NPRA [National Patriotic Reconstruction Assembly] government [which is headed by Charles Taylor]. (BBCMS Summary of World Broadcasts No. 11 March 12th) No word on sign off but best bet would be in the afternoons around 2200 or so. Watch out for co-channel Radio Nigeria, Kaduna. (HJ)

MALI—Radio Mali has English on Sundays from 1840-1900. A UN program is broadcast on Saturdays in French from 2130-2200. The latter might be an easier route to get a QSL. Try 5995 4835 or 4783. (BBCMS World Broadcasts Schedules No. 9 March 4th)

MOROCCO—VOA The Tangier site is now off the air. (Dan Ferguson March 23rd)

MOZAMBIQUE—Radio Mocambique 6111 noted operating here at 0400. (Allen, Korinek Numero Uno No. 1260 February 25th) Poor reception of **Radio Mocambique's** national service in almost every province of the country is due to the lack of dedicated lines that the station used to various transmitters. Reports from Beira say a number of programmes once broadcast over the national network have been discontinued, except for the station's radio newsreel transmitters. The station said the suspension of dedicated lines has been made necessary by the excessive fees

charged by the Mozambique Telecommunications enterprise. (BBCMS Summary of World Broadcasts No. 9 March 4th)

see **CLANDESTINES—AFRICA**

MYANMAR—The government has denounced *Radio Free Asia's* plans to broadcast in Burmese. They feel that the country's citizens have plenty of media choices and that the station would be interfering in the country's internal affairs. (BBCMS Summary of World Broadcasts No. 11 March 18th)

NORTH KOREA—Regional stations relay programmes from the *KCBS* in Pyongyang when not carrying local programs. Local programs are carried weekdays at 0500–0600 approximately.

Chongjin, North Hamgyong Provincial Service	3980
Hamhung, South Hamgyong Provincial Service	3221
Hyesan, Yanggang Provincial Service	3920
Kangaye, Chugong Provincial Service	3960
Pyongsong, South Pyongan Provincial Service	3350
Sariwon, North Hwanghae Provincial Service	2350
Wonsan, Kangwong Provincial Service	3970–v

KCBS is on from 2000–1800 on 11680 9665 6100 2850. (BBCMS World Broadcasts Schedules No. 8 February 25th)

PAKISTAN—see **INDIA**

PAPUA NEW GUINEA—A new station is being built in the North Solomons replacing Kieta 3325. The transmitter is 10 kW and will be located on the island of Buka at Hutjeno, according to the *NBC* in Port Moresby. Frequency and opening date still undecided. (Cushen OZDX No. 89 March) See **CLANDESTINES—PACIFIC** for another view. (HJ)

Radio Morobo a new outlet is planned for this one on 49 meters. (Kecskes Shortwave News March)

NBC 9675 The station is putting out a PSA telling residents to avoid a certain path close to the transmitter because of electromagnetic radiation hazards. (Searle NZ DX Times February)

PERU—*Radio Tayabamba* 4713 now noted here. (Arrunategui Shortwave News March)

Radio Ilucan 5422 new frequency (Klemetz Play Dx No. 776 February 14th)

Frecuencia San Ignacio 5700 Their verification signer is Franklin R. Hoyos Condor (Director Gerente) and their address is Jiron Villanueva Pinillos 330, San Ignacio, Departamento de Cajamarca. Their slogan is *Voz y Mensaje de los Hitos Fronterizos*. There are using 100 watts but because of the "crisis economica", they are requesting two 813 and 3 6146 tubes, and compact discs(!). (Dave Valko March 24th)

Radio Paucartambo 5895 a new station heard in Spanish and Aymara as early as 1000. (Dave Valko March 10th) Seems to be the Paucartambo in Cusco department. (Rich McVicar DX Partyline March 12th)

Radio Santa Rosa 6045.2 seems to be operating here pretty regular now in the mornings. Thanks Fred Kohlbrenner. (HJ March 23rd)

Radio Union 6115 the correct address for this one is: Av. Central 717, piso 12, San Isidro or Apartado Postal 833, Lima 27. (Klemetz Numero Uno No. 1259 February 18th)

Radio Centinela 6544.54 a new station that was heard both morning and evening as late as 0503. (Tony Orr Dave Valko February) Another slogan is *La Voz de la Guaringas*. The station is located in Huancabamba. Las Guaringas is a lake area where most of Peru's numerous witch doctors are being brought up. (Klemetz Numero Uno No. 1261 March 4th) It is a place where two lakes meet—blanca and negra. Witch doctors perform "wash and cure" for the ill in the lakes. (Arrunategui Shortwave News March)

PIRATES—EUROPE—Jock Wilson of *Radio Stella* and Jack Russell of *Weekend Music Radio* will be in Ireland during April repairing *Stella's* 75 meter band transmitter

and setting up the 150 watt new transmitter on 6810. (Chris Lobdell March 12th)

PIRATES—USA—WPIG 7415 was visited by local police and the FCC and told to stop broadcasting. No equipment was seized. (Zeller Numero Uno No. 1260 February 25th)

RUSSIA—Radio Lena located in Yakutsk, their schedule is 0300–1000 on 5920 and 6155. (Anisimov ASK-Dx via Klepov OZDX No. 89 March)

Radio Republic of Sakha also in Yakutsk is on 0800–1000 and 2000–2200 on 7215. (ibid.)

Radio Moscow International's Joe Adamov says that the station now broadcasts in 45 languages and employs about 1,300 people with 120 for the World Service in English. (BBCMS Summary of World Broadcasts No. 11 March 18th)

Radio Slavyanka, the Russian defence ministry's radio station, contact telephone numbers in Moscow are 296 66 08 and 296 68 48. Their address is: 103168 Moscow, K-160, ulitsa Marshala Shaposhnikova 14. (BBCMS Summary of World Broadcasts No. 11 March 18th)

Radio Radonezh 9795 is the radio station of the Russian orthodox church and is on from 1600–1700. Their address is: ul Pyatnitskaya 25, Moscow 113 326. (BBCMS World Broadcasts Schedules No. 8 February 25th)

Radiostantsiya Tsentri is on from 0630–0700 on 12010 and 1630–1700 on 7170. Their address is: Andrey Nekrasov, Radiostantsiya Tsentri, ul Nikolskaya 7, Moscow 103012 and the fax number is +7 095 956 75 46. (ibid.)

Radio Alef is on Sundays, Tuesdays and Thursdays from 1700–1800 on 17890 and 12075. Their address is P.O. Box 72, Moscow 123154. (ibid. No. 9 March 4th)

Radio Nadezda is aimed at women ages 25–55. Try at 0400 on 11965 11740 11705 11665 11655 9730 9645 9490 or from 2000–2200 on 12015 11965 or 7255. Their address is ul Pyatnitskaya 25, Moscow 113 326 and the fax number is +7 095 230 2828. (ibid.)

The long active transmitter on 4485 via Petropavlosk is now inactive. (David Crawford

March 22nd) Related to power cuts ? Strikes ? (HJ)

Russian radio and television broadcasts in the near abroad (other former Soviet republics) could be halted soon because no funds are being allocated from the Russian budget for this purpose. The usual practice is that a country or a specific radio station broadcasting in its territory a program from another state must not only itself bear the cost involved but often also pay considerable monies for the right to relay these programs. In the territories of the former (Soviet) Union everything is the other way around. Except for Turkmenistan, Belarus and certain other CIS countries, which have assumed responsibility for the expenditure involved, the other states are producing uncertainty by their statements that they cannot pay for the reception of Russian television and radio broadcasts. Additional, Uzbekistan is considering suspending relays of *Mayak* (BBCMS Summary of World Broadcasts No. 9 March 4th)

SINGAPORE—Radio Singapore International There were conflicting stories as to whether the new transmitters were being tested on 11940, 9635, 7250 and 5052 early in the month of January, although it should be noted that the old transmitters were at a different site (Jurong). The new site is immediately adjacent to but independent of the *BBC* Singapore (Kranji) relay facility. (David Clark World Radio Report Dx Ontario February)

SOUTH AFRICA—S.A. will be holding elections on April 27th. You can monitor the results on *Channel Africa*. It will be interesting to see if there will be any changes in the domestic network after the elections so I have included their schedule. Much thanks to Al Quaglieri for providing these schedules:

CHANNEL AFRICA

UTC	LANG	FREQ	TARGET AREA
0300–0500	English	*5955	East & Central Africa
0300–0500	English	3220	Southern Africa

CHANNEL AFRICA

UTC	LANG	FREQ	TARGET AREA
0500-0600	English	*9695	Nigeria & Ghana
0500-0700	English	+5955	Southern Africa
0600-0700	English	*15220	Nigeria & Ghana
1000-1100	English	*17810	East Africa
1100-1200	English	*9730	Southern Africa
1500-1800	English	4945	Southern Africa
1500-1800	English	*11770	East, West & Central Africa

(* indicates 500 kW, + indicates 100 kW into log-periodic antenna, all others 250 kW)

DOMESTIC SERVICES

UTC	STATION	FREQ	TARGET AREA
0300-0555	Radio Oranje	3230	North West Cape
0300-0600	Afrikaans Stereo	4810	North West Cape/ Namibia
0530-0800	Afrikaans Stereo	6045	North West Cape/ Namibia
0600-0750	Radio Oranje	5965	North West Cape
0745-1430	Afrikaans Stereo	7285	North West Cape/ Namibia
0755-1425	Radio Oranje	7270	North West Cape
1430-2200	Radio Oranje	3230	North West Cape
1435-2300	Afrikaans Stereo	4810	North West Cape/ Namibia
2300-0300	Radio 2000	4810	North West Cape/ Namibia

(all domestic services 100 kW)

SUDAN—*Radio Omdurman* 7200 continues to sign on at 0245 while 9165 remains off the air. (Brian Alexander March 12th)

SWAZILAND—see **CLANDESTINES—AFRICA**

TADZHIKISTAN—The *Radio Netherlands* relay via here is a good way to hear and verify this country. Try 9860 or 12025 between 0030 and 0325. (Ben Krepp March 9th)

TANZANIA—*Radio Tanzania* 5050 is their only frequency for the moment and is on from 0330-1915. (BBCMS World Broadcasts Schedules No. 8 February 25th)

THAILAND—*VOA* is operating with just two transmitters here on a limited schedule, but the site is expected to be fully operational by July. (Dan Ferguson March 23rd)

UNITED KINGDOM—*BBC* non-UK residents who will be relying on *BBC* World Service to follow the 1994 World Cup can obtain a poster/calendar/frequency guide free by writing to: Sports Guide '94, BBC World Service, Sports Unit, Bush House, London, WC2B 4PH. (Scott Edwards February 18th)

UNITED STATES—Follow up to last month's *LN*: I noticed with some dismay the comments by Richard "Quake" D'Angelo about the sale of our Maine station, *WCSN*, and subsequent Prophecy Countdown and Monitor Radio International broadcasts. It would appear that Mr. D'Angelo is interpreting our "informational letter" in a negative fashion, and that he has made some comments without knowing the full facts on this matter. For the record, I would like to clarify the issue for your readers: Yes, Herald Broadcasting has agreed to a sale agreement with Prophecy Countdown for our Maine station. As the license transfer procedure with the FCC takes some time, PCI contracted for air-time on *WCSN* during this phase of the sale. PCI is broadcasting during times that *WCSN* had been off-air; however, they are

using some frequencies that our regular listeners would recognize, so we notified our listeners that the PCI broadcasts were solely the responsibility of PCI—your normal broadcast disclaimer when broadcasting programming not of your origin.

Secondly, the reason that Monitor Radio programming now coming from *WCSN* will soon be coming from *WSHB* is rather obvious—once the sale of *WCSN* is complete, *Prophecy Countdown* will be airing its own programming full time. *WSHB* is currently installing a new 4X4 curtain antenna, oriented towards Africa and Europe, so as to pick up the programming to these regions now being broadcast from *WCSN*. So our listeners will continue to receive MRI programming as before, only from new antenna facilities at *WSHB* instead of from *WCSN*. (Ed Evans, HBS Senior Station Manager March)

KVOH In the most recent earthquake, this station escaped with only minor damage. (Radio News Bulletin February)

Two radio magazines have mentioned recently that feeder transmissions for *AWR* have been heard on various utility channels within the CIS. It is probable that these programs are originating at the *AWR* studio in Tula and that part of the program distribution system to the three relay transmitters (and elsewhere) involves the usage of the communication transmitters. I have tried over here in the United States to tune in these transmissions according to the suggested schedules, but without success. The list of frequencies, all SSB, as suggested by Glenn Hauser in the February issue of *Monitoring Times* is: 7970 8005 8040 10855 11575 12175 13365 13820 15660 16300 18870. We here at *AWR* would be interested to learn more about these relay transmissions, on the above channels and perhaps on others. We will offer a specially endorsed QSL card to verify all accurate reports on these transmissions. These reports should be sent to: *AWR* Special Projects, Dr. A. M. Peterson, 903 Tanninger Drive, Indianapolis, IN 46239 (Radio News Bulletin February)

Recently, several items have indicated that *AWR* is establishing a 10 kW shortwave station with 4 channel capability on an island

somewhere in the Pacific. This is not quite the case. The original information was indeed given out in an earlier edition of *Radio News Bulletin*, but the news item did not identify the country nor the owners. In actual fact, it is a government broadcasting organization that is upgrading its radio station with the new shortwave transmitter. *AWR* is developing a special Dx project in the Pacific and when it is confirmed information will be released. (ibid.)

Latest *Radio Miami International* Schedule

UTC TIME	UTC DAYS	LANG	STN	FREQ
0000-0500	Tu-Su	Spanish	WHRI	9495
0000-0030	Mo	Spanish	WRNO	7355
0800-0900	Mo-Fr	Spanish	WHRI	7355
1000-1300	Mo-Sa	Spanish	WHRI	9850
1400-1430	Mo-Su	Viet	KWHR	9930
2100-2200	Mo-Fr	Creole	WHRI	9485
2200-2300	Mo-Fr	Creole	WRNO	15420
2300-0000	Mo-Fr	Spanish	WHRI	9495

(Jeff White March 24th)

WRMI As of late March, *WRMI* was conducting test broadcasts irregularly on 9955 kHz with 500 watts of power. As of early April, *WRMI* is expected to be on with full power (50,000 watts) on 9955 kHz with test transmissions. Regular transmissions should begin later during April. The exact schedule has not been determined yet, but we expect it to be approximately 2100-0500 and 0900-1300 daily. The primary target area is Latin America. Programming will be in English, Spanish and other languages. (Jeff White March 24th)

VOA Some of the antennas at Bethany were damaged during an ice storm in January. Greenville took over many of the service normally carried by Bethany. (Radio News Bulletin February)

URUGUAY—SODRE Their schedule is: 15275 1000-0500 9620 1000-0300 6125 (no times given) (Howard Fine Tuning No. 726 February 12th)

Radio El Espectador 11835.7 is inactive. (TIN Relampago Dx January 15th via Radio Nuevo Mundo No. 189 February 4th)

Radio Intergracion 6045 is on irregularly from 0100-0200 and 1300-1400. (ibid.)

VENEZUELA—*Radio Rumbos* 4970 has reactivated here but is heard with only a weak signal. (HJ March 22nd) The station has Spanish news from *Radio Netherlands* weekdays at 1330. Try 9660v. (BBCMS World Broadcasts Schedules No. 11 March 18th)

VIETNAM—*Home Service* The First Program is on 4960v and 5925v and the Second program is on 10060v and 12035. (BBCMS Summary of World Broadcasts No. 7 February 18th) Try our local mornings. (HJ)

An unidentified station has been heard 4653v widely at 1309 with Hanoi relay. (Foster OZDX No. 89 March)

Son La BS 4813.2 heard here, ex 4966 and parallel 6329.1 at 1218. (ibid.)

Unid 6617 was probably a regional station but it has now left the air. (Martin World Radio Report Dx Ontario April)

YUGOSLAVIA—*Radio Yugoslavia* transferred all the transmitters formerly located in Bijeljina to Belgrade some time ago. (Jones Numero Uno No. 1260 February 25th)

ZAIRE—*HCJB* Follow up to February *LN*: At this time *HCJB* has no plans for operating a station in Zaire. What may be referred to is the existence of two stations in Zaire in which *HCJB* is involved. One of them is *Cherith Radio* operating from Bukavu in eastern Zaire. It is a small FM station covering only the immediate area surrounding this city. *HCJB* furnished the FM transmitter, antenna and some studio equipment for this station. They have talked about putting in a tropical band short wave transmitter, but as far as I know, no decision has been made. The other station *HCJB* has been involved in is located in Kinshasa. This is also a FM station. The equipment, which we helped provide, went over to Zaire late last year, and will be operated under the same license as the one in Bukavu, programmed by *Studios Sango Malamu* in Kinshasa. The transmitter is a 100 watt unit, very simple, but effective. (Roger Stubbe March 12th)

ZAMBIA—*Radio Zambia* This station feels that it is not fulfilling its expected role due to antiquated equipment so the Chinese government is to help Zambia install new shortwave transmitters. (BBCMS Summary of World Broadcasts No. 7 February 18th)

DX SHOWS—Arrangements have now been firmed up to extend the duration of *Dx Asiawaves* via *KTWR* Guam to 12 minutes, in lieu of the present eight minutes. The show goes out weekly, produced by ARDXC. For Z94, schedule will be:

Saturdays	2315	15610
Sundays	1615	7455
Sundays	1815	13720
Saturdays	1615	7455
Sundays	0215	13720

All days and times are UTC. The first edition of the programme is actually that aired at 2315 UTC Sundays. Special ARDXC QSL cards are offered—these are currently full colour "Dinosaur" reproductions and are actually First Day of Issue philatelic cards for the Dinosaur stamp series from Australia Post. Reports go to ARDXC, Box 227, Box Hill, Victoria 3128, Australia. Two IRCs requested, or equivalent. (Bob Padula)

Radio Rebelde 5025 carries a Spanish Dx show Saturdays from 0600-0620. (Viloria Shortwave News March)

Radio Portugal's Dx Program, which is heard every third week during their Friday broadcast: April 22 May 13 June 3 and 24th. (John Norfolk February 22nd)

The weekly Dx show of the *Danish Shortwave Clubs International*, presented by Finn Krone, has returned. It is broadcasts via *AWR Forli* at 0727 UTC Sunday on 7230. (Shortwave News March)

QSLing—What follows is a special report by John Wilkins that first appeared in *Numero Uno*:

QSLing—Is it worth it? We all know that collecting verifications can be an expensive proposition. How costly is it? I've been keeping records since 1981 and have summarized the data. What follows are statistics covering (I) cost, in dollars, of QSLing, and (II) numbers of reports required to obtain verifications. Special emphasis is given to Latin America, since that area is by far the most irregular when it comes to getting replies to reception reports. Here are the charts covering the costs of QSLing. The column headings are as follows:

(A) number of QSLs received

(B) total cost of only the QSLs in (A)

(C) average cost per QSL (B + A)

(D) total cost including stations that have not answered

(E) average cost per QSL (D + A)

	(A)	(B)	(C)	(D)	(E)
South America					
Bolivia	15	\$50.71	\$3.38	\$83.67	\$5.58
Brazil	44	163.48	3.72	199.48	4.53
Colombia	22	87.59	3.98	153.21	6.96
Ecuador	29	97.53	3.36	120.59	4.16
Peru	44	163.94	3.73	297.11	6.75
Venezuela	20	91.26	4.56	128.98	6.45
Others	19	48.25	2.54	90.84	4.78
Total SAm	193	702.76	3.64	1073.88	5.56

Central America and Caribbean

Costa Rica	9	\$22.09	\$2.45	\$22.82	\$2.54
Dominican Rep	5	16.06	3.21	39.06	7.81
Guatemala	11	28.35	2.58	28.35	2.58
Honduras	10	26.00	2.60	26.00	2.60
Mexico	14	35.01	2.50	35.01	2.50
Others	15	31.87	2.12	44.37	2.96
Total CAm/Car	66	159.38	2.49	195.61	3.06

Total Latins 257 862.14 3.35 1269.49 4.94

Africa	78	267.44	3.43	369.66	4.74
Asia (not Indo)	81	163.89	2.02	228.11	2.82
Clandestine	18	39.18	2.18	58.94	3.27
Europe	59	58.22	.99	66.37	1.12
Indonesia	33	130.73	3.96	157.08	4.76
N. America	40	30.96	.77	32.56	.81
NAm Pirates	9	8.72	.98	13.69	1.52
Oceania(not PNG)	28	39.41	1.41	39.41	1.41
PNG	20	63.92	3.20	63.92	3.20

Grand Total 623 1664.68 2.67 2299.23 3.69

Cost includes everything involved in sending a reception report. Keep in mind that the cost of everything has gradually increased over the years. The below charts give you the return rates:

(A) Return rate (no. of stns QSLed/no. of stns reported to)

(B) Number of stations that replied to first report

(C) Average number of reports to get a QSL

(D) Same as C but adding reports that remain unanswered

	(A)	(B)	(C)	(D)
South America				
Bolivia	15/22 = 68%	5/22	31/51 = 2.1	49/15 = 3.3
Brazil	44/51 = 86%	19/51	95/44 = 2.2	117/44 = 2.7
Colombia	22/33 = 67%	8/33	53/22 = 2.4	92/22 = 4.2
Ecuador	29/33 = 88%	9/33	67/29 = 2.3	82/29 = 2.8
Peru	44/72 = 61%	19/72	98/44 = 2.2	171/44 = 3.9
Venezuela	20/25 = 80%	9/25	53/20 = 2.7	73/20 = 3.7
Others	19/23 = 83%	10/23	32/19 = 1.7	54/19 = 2.8

Central America and Caribbean

Costa Rica	9/10 = 90%	5/10	15/9 = 1.7	16/9 = 1.8
Dominican Rep	5/9 = 56%	2/9	11/5 = 2.2	24/5 = 4.8
Guatemala	11/11 = 100%	8/11	19/11 = 1.7	19/11 = 1.7
Honduras	10/10 = 100%	4/10	20/10 = 2.0	20/10 = 2.0
Mexico	14/14 = 100%	6/14	29/14 = 2.1	29/14 = 2.1
Others	15/16 = 94%	11/16	23/15 = 1.4	29/15 = 1.9
Total Latin	64/70 = 91%	36/70	117/64 = 1.8	137/64 = 2.1

Africa	78/91 = 86%	43/91	Due to the generally high return rate from the rest of the world, this section was not computed.	
Asia(not Indo)	81/88 = 92%	58/88		
Clandestine	18/25 = 68%	10/25		
Europe	59/62 = 95%	54/62		
Indonesia	33/36 = 92%	15/36		
N America	40/41 = 98%	35/41		
NA Pirates	9/12 = 75%	8/12		
Oceania(not PNG)	28/28 = 100%	26/28		
PNG	20/20 = 100%	8/20		

Grand total 623/732=85% 114/329=35%

In summarizing Part II, it is obvious that follow-ups must be sent if one is to obtain a decent return rate. If no follow-ups were ever sent, my return rate would be 35% instead of 85%. Economics are a consideration. Latin American stations simply do not have the time or money to reply in many cases. Even when return postage is enclosed, many stations lack the personnel to answer all letters. So perseverance is the name of the game.

So, to answer the question "Is it worth it?", that is up to the individual. This report will give you a rough idea of what is involved in terms of costs and time in the "serious QSLing" game. \$2299 may seem like a lot of money, but when spread out over 13 years, it's not really that much to spend on a hobby. For some, QSLing is simply not affordable. For others, it is a matter of how much money and time one is willing to spend. Perhaps this report will help you decide.

QSL Reports

Sam Barlo
47 Prospect Place
Bristol, CT 06010



ABU DHABI: UAE Radio 9770 p/d folder cd. in 22 ds. for 2 IRCs. Note said don't send IRCs - but they didn't return them! (Ducharme-MA).

ALGERIA: Radio Algiers International 11715 f/d cd. in 46 ds. (Ondrechen-DEN).

ANDAMAN ISLAND: All India Radio 4760 via * **Port Blair** f/d "Marble Swing" cd. in 70 ds. for a rpt. direct to the station (Hosmer). f/d "Old Castle and Temple" cd. in 5 mo. after a f/up rpt. w/ ms. QSL was via Delhi. (Sgrulletta-NY).

ANTIGUA: BBC 5975 f/d cd. in 71 ds. for a FAX rpt. (Maes). f/d ltr. in 60 ds. (Mike)

ASCENSION ISLAND: BBC 21660 f/d ltr. in 8 mo. after a f/up rpt. for 2 IRCs. v/s Dinah Fowler, Transmitter Engineer. (Rausch-NJ). f/d prepared cd. w/ form ltr. and ms. in 2 mo. (Hosmer-MI). 11820 f/d cd. in 30 ds. for a FAX rpt. (Maes).

ASIATIC RUSSIA: Radio Moscow 7345 via **Petropavlosk-Kamchatsky** f/d cd. in 7 1/2 wks. for 2 IRCs. (Pankake-MN). 15480 via **Vladivostok** f/d cd. in 2 mo. (Barto-CT). 9780 via **Nikolaevsk-on-Amur** f/d cd. in 7 wks. * (Barto-CT). **RID Time Signal Station** 5004 f/d ltr. w/ nice postcards in 1 mo. for \$1.00. v/s Feodor Brazhnikov. Addr: P.O. Box 3036, Irkutsk 664059, Russia. (Ondrechen).

Adventist World Radio 9835 via **Novosibirsk** f/d cd. in 47 ds. for \$1.00. (Palmerheim-WA). f/d cd. w/ XMAS cd., stamps & a postcard in 10 wks. for \$1.00. (Pankake-MN). **China Radio International** 9880 via **Irkutsk** cd. in 5 wks. (Barto-CT).

AUSTRALIA: Radio Australia 21740 via **Shepparton** f/d ltr. w/ schedule in 28 ds. (Humenyk-ONT). **VLC Radio Australia** 11800 via **Shepparton** cd. w/ schedule and calendar in 1 mo. (Barto-CT). **VLW6** 6140 via **Wanneroo** f/d cd. in 8 wks. for 2 IRCs. (Pankake-MN). f/d "Map" cd. in 57 ds. for 3 IRCs. (Washburn-ME). same in 77 ds. for 3 IRCs. (Poston-IA) **VLW4** 4920 via **Brisbane** f/d "Map" cd. w/ schedule and sticker in 41 ds. (Poston-IA). **VLBA** 2310 via **Alice Springs** f/d ltr. w/ booklets, refrigerator magnet via CAAMA in 3 mo. This after 3 tries. v/s Rae Allen, Regional Programme Manager. (Robertson-MS).

* **Australian Armed Forces Radio** 10848.5 via **North West Cape** f/d ltr. in 64 ds. w/ tourist brochure. v/s Adam Iffland, Presenter. (D'Angelo-PA).

BAHRAIN: Radio Bahrain 9746 p/d cd. in 57 ds. (D'Angelo-PA). p/d cd. in 2 mo. for \$1.00. (Robertson-MS).

BELGIUM: Radio Vlaanderen International 17590 f/d cd. w/ schedule and map in 51 ds. (Washburn-ME).

RADIO UNIVERSIDAD



DEAR MR. JAMES C. CLAR:
WE ARE VERY HAPPY TO HEAR FROM YOU
THAT IS TRUE, WHAT YOU HEARD THE
31 OF DEC-31 1993, WAS THE PROGRAM
THE LAST NIGHT OF THE YEAR, WITH THE
MOST POPULAR SONGS OF THE LAST 90
YEARS, IT STARTED AT 17 hrs LOCAL
TIME UNTIL 24 hrs.

IN CO. 72 RIG. WITH 2,000 WATT
WE OPERATE IN THE 89 R

BAND FROM 17
C. JAMES CLAR
41 VICE F. R. A.
ROCHESTER N.Y. 14607
U.S.A.



MR AND MRS JAMES C. CLAR.
41 VICE F. R. A.
ROCHESTER N.Y. 14607
U.S.A.

OUR TRANSMISSION IS AN ELUCOR, MADE

Radio International is an ethnic and cultural non-commercial radio
service of the University of California, Los Angeles. This
service is operated by students and is subject to the approval of the
University of California, Los Angeles. This service is operated by
students and is subject to the approval of the University of California,
Los Angeles. This service is operated by students and is subject to the
approval of the University of California, Los Angeles.

Radio International is an ethnic and cultural non-commercial radio
service of the University of California, Los Angeles. This
service is operated by students and is subject to the approval of the
University of California, Los Angeles. This service is operated by
students and is subject to the approval of the University of California,
Los Angeles. This service is operated by students and is subject to the
approval of the University of California, Los Angeles.

Responsible
Chris Moore & Co. Inc.
Chris Moore & Co. Inc.
Responsible International de AFM
Responsible International de AFM
Responsible International de AFM
Responsible International de AFM
Responsible International de AFM

**HOLIVIA: CPI45 Radio Metropol-
itana** 6194.6 f/d "Certifi-
cado de Sintonia" in 9 mo.
w/ nice pennant for a SP
rpt. and \$1.00. v/s Carlos
Palenque Aviles. (Palmer-
sheim-WA). 6195 f/d personal
ltr. in 1 yr. w/ pennant.
* (Barrera-ARG). **Radio Juan
XXIII** 4965 f/d cd. w/ stick-
er in 5 wks. for a SP rpt.
and \$1.00. v/s Pbro. Elias
Cortezon R. (Robertson-MS).
Radio Santa Cruz 6135 f/d
ltr. w/ schedule and folder

NOTES: C. Vernon Hyson is awaiting his reply from St. Helena. This will be C/V #210!
Hope you get it real soon!...Sam. Thanks for the package of goodies. They were very
much appreciated. **Mike Hardester** says that the past month has been slow for SWBC
QSLs; however, the BCB and utilities were plentiful. **Bill Wilkins** sends along his
best wishes to everyone for the New Year.

in 47 ds. for a SP rpt., tape and \$1.00. v/s Victor Blajot, Director
General. (Washburn-ME).

BONAIRE: Radio Nederlands 17605 and 21590 f/d "Ostara Hyacinths" cd. w/
sticker in 26 ds. (Humeny-ONT).

BORNEO (Kalimantan): RRI Banjarmasin 3249.9 f/d prepared cd. in 26 ds.
for SASE. v/s Harmyn Husein (who was the v/s at Ujung Pan-
dang in 1990). (Lare).

BOTSWANA: VOA Hoepeng Hill 13710 f/d cd. in 55
ds. for a FAX. (Maes-BEL). f/d cd. in 13 ds.
(Anderson-WI). same in 2 mo. (Ondrechen-DEN).
7280 cd. w/ stickers in 74 ds. v/s John Vode-
nik. (Poston-IA). 9885 same in 40 ds. (Washburn).

BULGARIA: VOA 15080 via **Plovdiv** f/d "Greenville"
* cd. w/ site in 34 ds. (Buer-FL).

CAMEROON: Radio Caroua 5010 f/d certificate and
"Solidarity Certificate" via Cameroon Link Bilin-
gual Magazine" in 1 mo. for a FR rpt. and 4 IRCs.
v/s James Achanyi-Fontem. (Robertson-MS). **Radio Dou-
ala** 7150 same as above in 1 mo. (Robertson).

CANADA: RCI 5960 and 9755 f/d cd. w/ schedule and sticker
in 19 ds. for ms. (Lane). **Canadian Forces Network** 6000

via **RCI** f/d cd. w/ sticker in 13 ds. v/s Bill Wester-
haver. (D'An elo-PA). **CKZU** 6160 f/d "CBC Centre" cd. in
11 ds. v/s Dave Newbury. (Mike). **Radio Japan** 6025 via **RCI**
f/d "Osechi" cd. in 37 ds. (Mike)...Please sign your last
name after each contribution...Sam. 5960 via **Sackville** f/d
"Nara Sunset" cd. in 1 mo. v/s H. Kawamoto. (Loudell-DE). **CBC**

Northern Quebec Service 9625 p/d ltr. in 3 mo. for \$1.00. v/s
Natalie Chamberland. (Anderson-MI). **CHU** 3330 p/d "Sir Sanford
Fleming" cd. in 15 ds. (Mike). same for a taped rpt. and 1 IRC
in 22 ds. (Poston-IA). **CFRX** 6070 f/d "Map" cd. in 12 ds. for ms.

v/s Stephen Canney. (Washburn-ME). cd. in 2 wks.
from ODXA. Also QSL from
CFRB-1010. (Bueneman-MO).

**CELEBES (Sulawesi): RRI Ujung
Pandang** 4753 f/d prepared
cd. w/ schedule in 2 mo.
for an IN rpt. and \$1.00.
v/s Drs. Bambang Pudjono.
(Robertson-MS).

CHAD: Radio Chad 4905 f/d cd.
in 68 ds. for \$1.00. (Maes).

and tribe." Rev. 14:6



the Good News of eternity

to all who live on earth, every nation, race, and language



Tahiti



POLYNESIE FRANÇAISE BP 125 PAPEETE
via Ross Comeau

R.F.O. votre Radio

FREQUENCES

740 KHZ	20 Kw
8135 KHZ	4 Kw
9750 KHZ	4 Kw
11825 KHZ	20 Kw
15170 KHZ	20 Kw

KUWAIT: Radio Kuwait 13620 f/d folder cd. in 27 ds. w/ schedule. (Ducharme-MA). 13620 via **Kabd** f/d cd. in 306 ds. after a f/up rpt. (Maes).

LEBANON: Wings of Hope 11530 f/d cd. w/ ltr. in 5 wks. for 1 IRC. v/s Paul Johnson. (Anderson-MI).

LITHUANIA: Radio Vilnius 7150 f/d cd. in 42 ds. w/ schedule for 2 IRCs. WRTH says **Krasnodar** as site but not on my cd. (Wilkins-MS).

MALAGASY REP: Radio Nederland 11655 f/d "Floral" cd. in 57 ds. (Poston).

MANCHURIA: Heilongjiang 1 7350 f/d cd. w/ stickers and brochure in 1 mo. for \$1.00. (Robertson-MS).

MEXICO: Radio Educacion XEPPM 6185 f/d cd. in 88 ds. for a SP rpt. and \$1.00. (Brouillette-IL). p/d cd. w/ decal and newsltr. in 5 mo. for a SP rpt. v/s Luis Ernesto P. Orozco, Director General. (Robertson).

NOTES: Arie Durden says the QSLing has been slow lately. Conditions to Africa has been relatively good. We'll see! **Charlie Washburn** sent in a few nice QSLs along with some very useful information for ye Editor.

Thank you...Sam. **Jon Klinedinst** uses a Sony 2010

and a 12 foot random wire for his shack.

Living and DXing in an urban environment makes it more of a challenge.

Good luck..Sam. **Jim Ducharme** in South

Hadley, MA has rejoined NASWA after a

20 year hiatus. He still uses an old

Hallicrafter SX-100 receiver. They

were great...Sam.

MOLDOVA: Radio Moscow 15290 via **Kishinev** f/d cd. in 59 ds. (Buer-FL).

17760 f/d cd. w/ schedule in 2 mo.

for \$1.00. (Robertson-MS). 12070 via

* **Grigoriopol** cd. w/ site in 83 ds. for

a taped rpt. (Klinck-NY). **Radio Aum**

Shinriyko 15290 via **Kishinev** f/d cd. in

58 ds. (Buer-FL).

NEWFOUNDLAND: CKZN 6160 f/d cd. w/ ltr. in 4

mo. for \$1.00. v/s Elaine James. (Anderson-

MI). f/d cd. w/ sticker, schedule and brochure

in 2 mo. for \$1.00. (Robertson-MS).

NEW GUINEA TERR: Radio Enga 2410 f/d ltr. in 2

yrs. for ms. v/s Felix Tumin K., Station Techni-

cian. (Hosmer-MI).

NEW ZEALAND: Radio New Zealand International 9700

via **Rangitaki** p/d cd. w/ sticker and schedule

in 26 ds. (Humenyk).

NORWAY: Radio Norway International 9675 f/d "Wood

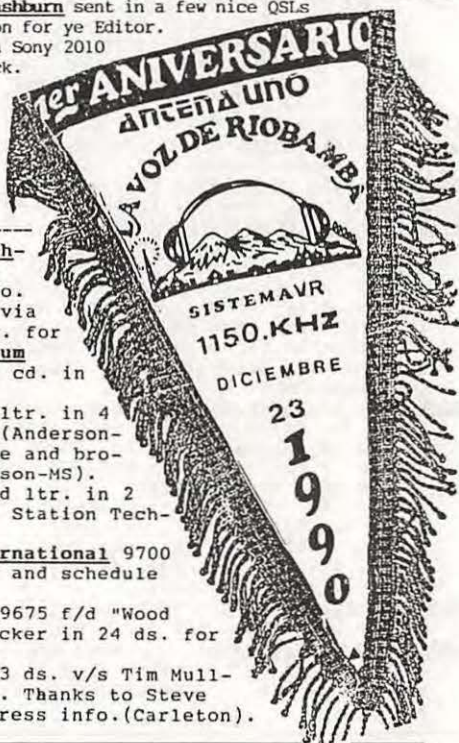
Carving" cd. w/ schedule and sticker in 24 ds. for

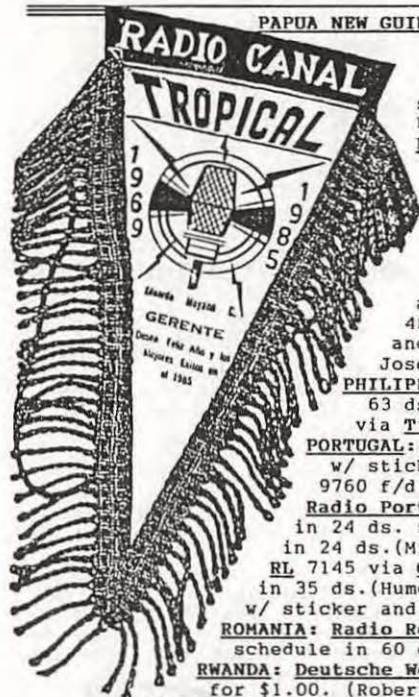
1 IRC. (Klinedinst-PA).

OMAN: BBC 15310 f/d paper map in 203 ds. v/s Tim Mull-

ins, Senior Transmitter Engineer. Thanks to Steve

Price and Lowell Pankake for address info. (Carleton).





PAPUA NEW GUINEA: NBC Port Moresby 9675 f/d cd. w/ ltr. in 61 ds. for 2 IRCs. and \$1.00. v/s Francesca Maredel, Planning Officer. (Ducharme-MA). p/d "Map" cd. w/ schedule in 41 ds. for 2 IRCs. (Washburn-ME).

PERU: Radio Melodia 5995 n/d personal ltr. in 151 ds. for a SP rpt. and \$1.00. This after a f/up rpt. v/s J. Elva Alvarez de Delgado, Gerente de Comercializacion. Also rcvd. 2 beautiful pennants and stickers.

(Durden-GA). Radio Madre de Dios 4950 f/d "Map" cd. in 1 1/2 mo. for a SP rpt. and \$1.00. (Pappas-SD). Radio Maranon 4835 f/d ltr. in 120 ds. for a SP rpt. and \$1.00. This after a f/up rpt. v/s

Jose Alberto Almansa, Ingeniero. (Durden).

PHILIPPINES: VOA 9760 f/d "Sunrise" cd. in 63 ds. v/s John Vodenik. (Poston-IA). 11920 via Tinang f/d cd. in 18 ds. for a FAX rpt.

PORTUGAL: VOA 11710 via Gloria f/d cd. (Maes). w/ sticker and schedule in 111 ds. (Humenyk).

9760 f/d cd. in 55 ds. for a FAX rpt. (Maes). Radio Portugal 15515 f/d cd. w/ sticker and sked. in 24 ds. for 1 IRC. (Lane). 9570 f/d "World" cd. in 24 ds. (Mike). 9705 same in 173 ds. (Lane). RPE/RL 7145 via Gloria f/d cd. w/ sticker and schedule

in 35 ds. (Humenyk). 5955 and 7190 via Mazoqueira cd. w/ sticker and schedule in 23 ds. (Humenyk-ONT).

ROMANIA: Radio Romania International 15365 f/d cd. w/ schedule in 60 ds. for \$1.00. (Lane).

RWANDA: Deutsche Welle 17860 p/d cd. w/ sticker in 2 mo. for \$1.00. (Robertson-MS).

SAINT HELENA: Radio Saint Helena ZHH 11092.5 f/d cd. w/ info. sheet in 116 ds. for \$2.00. v/s Tony Leo. (Hardest-NC). f/d cd. in 103 ds. for a FAX rpt. (Maes). same in 96 ds. (Name). f/d cd. w/ ltr. and postcard in 105 ds. for \$1.00. (Lane). f/d cd. in 3 1/2 mo. (Bueneman)

SAIPAN: KHBI 9425 f/d cd. in 35 ds. (Humenyk-ONT).

SAUDI ARABIA: BSKSA 11780 f/d cd. in 38 ds. for a taped rpt. v/s Suliman A. Al Samnan. (Pappas-SD).

SERBIA: Radio Yugoslavia 9580 via Belgrade f/d cd. in 242 ds. (Washburn).

SEYCHELLES: BBC 9630 f/d ltr. in 27 ds. for \$1.00. (Lane).

SIERRA LEONE: SLBS 3316 f/d cd. in 101 ds. for a taped rpt. and \$1.00.

(Klinck-NY). p/d blue cd. in 1165 ds. after several f/up rpts. (Lare). f/d cd. after 10 yrs. of rpts. My last rpt. was sent to Joshua Nicol, Assistant to the Director of Broadcasting. It worked! My best QSL! (Carleton-ONT).

SLOVAKIA: Slovak Radio 5930 f/d cd. in 2 mo. for \$1.00. (Eckert-PA). 11990 via Velke Kostolany f/d cd. in 26 ds. for a FAX rpt. (Maes-BEL).

SOUTH AFRICA: Channel Africa 15240 f/d cd. w/ sticker and schedule in 74 ds. for \$1.00. (Lane) n/d "Johannesburg" cd. in 4 mo. for \$1.00. Sticker, calendar and sked. were rcvd. (Pankake-MN).

SPANISH MOROCCO: VOA 17790 via Brieche f/d cd. in 55 ds. for a FAX rpt.

SRI LANKA: Radio Japan (Maes-BEL). 11840 f/d cd. w/ calendar in 2 mo. for \$1.00. v/s H. Kawamoto. (Robertson-MS).

One day, one frequency...

Pirate Radio Insanity!

7445 Khz

Radio DOOMSDAY via Lobdell

Voice Of the Runaway Maharishi

The Radio Airplane

FLUFFY NUT

RADIO FLUFFY NUT

UNID

Unidentified Pirate Radio



New Years Day 1994

SUMATERA: RRI Sibolga 5256 prepared cd. in 28 ds. for an TN rpt. and ms. (D'Angelo-PA).

SWEDEN: Radio Sweden 15240 and 17870 f/d "Beach" cd. w/ schedule and sticker in 19 ds. for 1 IRC. (Klinedinst-PA).

SWITZERLAND: Swiss Radio International

15505 via **Schwarzenburg** f/d cd. in 23 ds. (Humenyk-ONT).

TANGIER: RTVM 11920 f/d cd. in 321 ds. after a f/up rpt. (Maes). **VOA** 15245 f/d cd. in 55 ds. for a FAX rpt. (Maes).

THAILAND: VOA 9560 via **Udorn** f/d cd. in 2 mo. (Pankake-MN). 11855 f/d cd. in 2 mo. (Ondrechen). 11705 f/d cd. in 55 ds. for a * FAX rpt. (Maes). **Bangkok Meteorological Radio** 6764.9 f/d cd. w/ personal ltr. in 3 wks. v/s Busara Na. Ranong. (Barto-CT).

TIBET: Xizang PBS 5240 f/d cd. w/ stickers and brochures in 1 mo. for \$1.00. (Robertson-MS).

TURKEY: Turkish Police Radio 7370 f/d cd. in 64 ds. * for 1 IRC. (Helm-KS).

UKRAINE: Radio Kiev 15195 f/d cd. in 5 mo. for \$1.00. (Trummel). **Radio Moscow** 7205 via **Simferopol** f/d cd. in 56 ds. for 1 IRC. (Helm-KS).

USA: WRMI Radio Miami International 9955 f/d cd. w/ brochure and ltr. in 17 ds.

v/s Jeff White. (Du-charme-MA). f/d cd. in 24 ds. w/ sticker and info. sheet. (Helm-KS). cd. in 42 ds. for a test broadcast. (Kusalik-ALB). in 22 ds. w/ promo material for ms. (Klinedinst-PA). f/d cd. in 21 ds. for \$1.00. 400 watts (Anderson-MI). **WSHB** 5850 f/d "Transmitter" cd. in 37 ds. (Mike). 7465 f/d "Towers" cd. in 32 ds. v/s Judy Cooke. (Humenyk-ONT). f/d cd. in 35 ds. (Humenyk). **KJES** 15545 f/d cd. in 19 ds. v/s M. Reuter, Manager. (Humenyk-ONT). 11715 f/d cd. in 1 wk. for \$1.00. (Pankake-MN). 9510 f/d cd. in 2 wks. for ms. (Jarvis-CA). **WRNO** 15420 f/d "World Wide DX Club" cd. w/ schedule in 27 ds. for ms. (Jarvis-CA). f/d "Rush Limbaugh" cd. in 50 ds. (Humenyk). **KCBI** 15725 f/d cd. in 16 ds. (Gold-MI). 9815 f/d cd. in 87 ds. for ms. (Jarvis-CA). **Radio Marti** 6030 f/d "Jose Marti" cd. w/ schedule in 18 ds. v/s Mike Pallone. (Pappas-SD). **WWV** 5000 f/d folder cd. in 24 ds. (Mike) **WWCR** 7435 f/d cd. in 1 mo. for ms. (Bueneman-MO). **Voice of Free China** 5950 via **WYFR** f/d "Olympic Baseball" cd. w/ sticker and schedule in 6 wks. (Loudell-DE). 9850, 11915 f/d cd. in 32 ds. w/ schedule. (Humenyk)

Confirming your reception report of our 4070 Kc station on 12-19-92 at 01:00 GMT

Thanks for QSL and Best Wishes

RTL H6rtunk
L-2850 Luxembourg



Mark Box. Humenyk
26, Cambridge Heights Road
Weston Ontario
Canada



RADIO SAN MIGUEL
CP 114 o.c. 60 MTS.

CERTIFICADO DE SINTONIA

RADIO SAN MIGUEL Certifica que:
Jerry Klinck

ha captado nuestra señal de transmisión en:
4.925.6 Khz.

Elberlta, 6 de Enero de 1993

Director



- * **KPD581** 1620 **CT DOT** 1620 f/d ltr. 10 watts. v/s Mr. William E. Keish, Director of Communications. (Comeau-MA).
- * **WPAC848** 1610 **Anastasia State Recreational Area** prepared cd. in 38 ds. 10 watts. (Hard-ester-NC). **WINB** 15145 f/d cd. w/ schedule in 17 ds. for ms. v/s John Norris. (Klinedinst-PA). 15185 f/d cd. w/ schedule in 63 ds. for ms. (Jarvis-CA). **WMLK** 9465 f/d ltr. in 68 ds. for ms. v/s Elder Jacob O. Meyer. (Klinedinst-PA). **KTBN** 15590 f/d cd. in 78 ds. for a FAX rpt. (Maes-BEL).

EESTI RAADIO



USA: KTNB 15590 f/d cd. in 2 wks. for ms.(Robertson-MS).
WYFR 6065 f/d cd. w/ schedule in 15 ds.(Humenyk).
11830 f/d cd. in 2 wks. for ms.(Robertson-MS).

VOA Bethany 17800 f/d cd. in 18 ds. for a FAX rpt.(Maes-BEL). 19379 via Green-ville f/d cd. in 18 ds. for a FAX rpt.

USA (Pirate): Job Dylan Radio (Maes). 7466.3 f/d cd. for a rpt. in ACE.(Kusalik-ALB). Midnite Radio 7415 f/d cd. in 95 ds.(Turnick-PA). The Oasis 7464 f/d ltr. in 64 ds. via Wellsville addr.(Kusalik).

Altered States Radio 7470 f/d "Dead Rock Stars" w/ info. sheet in 15 ds.(Kusalik). WPIC 7415 f/d sheet w/ prepared cd. in 1 mo. (Trummel). n/d sheet in 5 ds. for a call in rpt.(Lobdell). Orbital Mind Control Satellite 7471 p/d sheet and tape in 1 mo.(trummel).

Solid Rock Radio 7465 f/d cd. in 2 wks. via Wellsville addr.(Trummel). f/d cd. in 11 ds.(Trummel). NAPRS 7408 f/d cd. in 3 wks. for a relay of Radio Titanic International (Trummel).

Radio Pluffernut f/d purple sheet in 2 mo.(Trummel). Pirate Radio Boston 7415.2 f/d cd. in 8 ds.(Trummel). XMAS Day Radio 7467 f/d info. sheet in 1 1/2 mo.(Trummel).

East Coast Beer Drinker 7465 f/d QSL sheet in 1 1/2 mo. 1 watt!!! (Trummel). He Man Radio 7415 f/d cd. in 72 ds. for ms.(Turnick-PA). Radio Free Euphoria 7465 and 7387 f/d "Bud-Man" sheets in 24 ds. for 3 ms.(Comeau-MA).

Radio Azteca 7413 f/d cd. in 25 ds. w/ pennant.(Kusalik-ALB). UNID Pirate 7445 f/d blue cd. for a rpt. in bulletins.(Lobdell). 7444 a very small f/d cd.(Trummel).

Voice of the Runaway Maharishi f/d sheet in 1 1/2 mo.(Trummel). Radio Marabu 7467 f/d cd. for a US relay in 1 1/2 mo.(Trummel).

KNBS 13900 f/d cd. w/ pennant and poster in 1 mo. via Wellsville. (Trummel). Radio Doomsday 7445 f/d cd. in 27 ds. for 3 ms.(Arey-NJ). 7414.5 f/d cd. in 39 ds. for ms.(Kusalik). f/d cd. in 62 ds. for ms.(Palmerheim-WA).

WLIS 7413 f/d cd. in 21 ds. for a rpt. in ACE.(Kusalik). f/d cd. in 64 ds. for 3 ms.(Turnick-PA). f/d "Alan Masyga" ltr. for a rpt. in the Pirate Pages.(Lobdell-MA).

VATICAN: Radio Vatican 15090 f/d cd. in 102 ds. for 1 IRC.(Lane). same in 119 ds. for 1 IRC.(Lane). 9600 f/d cd. in 37 ds. for 1 IRC.(Lane).

VENEZUELA: Radio Continente 5030 f/d cd. in 95 ds. for a SP rpt. and \$1.00.(D'Angelo-PA). Radio Tachira 4830 n/d "San Cristobal" cd. in 3 mo. for a SP rpt. and \$1.00.(Pappas-SD). Radio Continental 4940 f/d personal ltr. in 650 ds. for a SP rpt. and \$1.00. This after 5 f/up rpts. v/s Ing. Santiago San Gil Gonzalez. Also rcvd. a personal ltr. from Jose Francisco Ocana, station announcer, who says that he is a DXer and suspects that someone has been stealing the \$ from rpts!(Dur-

WEST BERLIN: RIAS 6005 f/d cd. in 45 ds. for 1 IRC. Also rcvd. stickers. v/s Lydia Duive.(Helm-KS).

WEST IRIAN: RRI Fak-Fak 4789.7 f/d prepared cd. w/ postcard and photo of a Konoro warrior in 1 mo. for an IN rpt. and \$1.00 v/s Richard Tan.(Robertson-MS).
ZAIRE: Radio Bukavu 4849 f/d ltr. in 215 ds. for a FR rpt. & 2 IRCs. v/s Kalume Kavue Katumbi.(Helm).



STATE OF BAHRAIN
MINISTRY OF INFORMATION
BROADCASTING & TELEVISION

via Rich D'Angelo

Dear Sir / Madam,

Thank you very much for your reception report and enclosures. The programme details 'on' mention confirms to our Broadcast schedule.

The information provided by you gives us important feed back, to improve our service.

With best wishes from all at Radio Bahrain

Date: 30 Jan 94

[Signature]
DIRECTOR OF BROADCASTING

We're going to end it here gang. Very interesting Column...Sam.

Contributors' Page

Vernon Hyson
5410 Camp Stewart Road
Charlotte, NC 28215
CompuServe 76516,1531



LOGGINGS CONTRIBUTORS - April 1994 - DEADLINE 10th of MONTH

The following members contributed loggings:

Brian ALEXANDER, Mechanicsburg, PA NRD525 Vs Longwires
Mark ANDERSON, Prescott, MI NRD525 DX440 Eavesdropper 180' Random
Gabriel BARRERA, Buenos Aires, ARG NRD525 20m Longwire
Julianna BICKUS, Herndon, VA R8 ATS803A Transoceanic Eavesdropper
Eric BUENEMAN, Hazelwood, MO DX440 Homebrew Antenna
John CARSON, Norman, OK NRD525 ATS803A Sony 2010 AD Sloper 500' Beverage
Jim CLAR, Rochester, NY R8 FRG8800 Eavesdropper, 110' LW
David M. CLARK, Thornhill, ONT 2-R8 2-R7 HQ180C Antenna Farm Leased by RCI
Russell CLEVELEY, Wilson, NY Icom 725 R1000 FRG7700
Richard D'ANGELO, Wyomissing, PA R8 FL3 AD Sloper Farley Loop
William DAVENPORT, Nashville, TN DX380 ICF7601 ANI
Harold FRODGE, Midland, MI R71A Sony 2002 DX302 AP4 MFJ956 2 Random 1 Dipole
Peter GRENIER, Sparks, NV FRG7 ATS803A Mfj1020A 99' Indoor Loop Anp Antenna
Michael HARDESTER, Jacksonville, NC R70 Sony 2010 200' Random RWest Loop
Ron HOWARD, Carmel, CA R71A
Hans JOHNSON, Columbia, MD R8 FL3 AD370 AD Sloper 50' LW
Rufus JORDAN, Pittsburgh, PA DX302 Transoceanic 33' LW
Marv KAMINSKY, Flanders, NJ NRD535 Random
Jerry KLINCK, West Seneca, NY R8 HQ180A Sony 2010 2-60m Dipoles 80' LW
Marie LAMB, Brewerton, NY HF150 ATS803A DX375 MFJ16010 16m Dipole 60m LW
Jim LANE, Toronto, ONT R5000 20m Dipole
Ernest LAWRENCE, Perry, NY NRD525 DX440 Dipole LW
Harold LEVISON, Philadelphia, PA R8 R70 D2999 Indoor LW
Daniel McCARATHY, Calhoun, GA R70
Don MOORE, Davenport, IA R5000 Sony 2010 FRG7 ICF7600D 400' Mini Beverage
Ed NEWBURY, Bridgeport, NE R8 R5000 70' Windom 66' Dipole 45' Segmented
T. C. O'HARE, Edmonds, WA R8 Dipole
Sheryl PASZKIEWICZ, Manitowoc, WI NRD515 NRD525 Eavesdropper 150' LW
Louis PENNISI, Unknown, UNK DX440
Salvator PLACANICA, ITALY Grundig 500 ICF7600D Indoor LW
Ed RAUSCH, Cedar Grove, NJ R5000 Sony 2010 MFJ959 Eavesdropper 150' LW
Betsy K. ROBINSON, Clinton, TN R8 18M Longwire
Mike RYAN, Bangkok, THAILAND Sony 2010 Sony 2001D ANI
Giovanni SERRA, Rome, ITALY NRD525 AD Sloper
Nick TERRENCE, Huntington, NY R8 R71A Sony 2010 Sloper Dipole
Wallace TREIBEL, Seattle, WA NRD525
Robert TUCKER, Savannah, GA ATS803A
Errol URBELIS, Kings Park, NY TS440S HQ180 Sony 2010 FRG7 125' LW
W. R. WILKENS, Biloxi, MS

Thanks to all who shared their logs with us! The extra effort is appreciated very much. It was good to see old friends and meet new ones at this year's Winterfest! A goodly crew showed up, some from long distances indeed. I think Jonathan Marks eventually came the farthest. If you have never attended this shindig, I recommend you mark it on your calendar for next year.....

It's hard to believe we are in the second quarter of the year - hopefully the summer static levels will be slow arriving this year as April can still give you some very good DX if the the earwax cleaning bursts aren't there along with the signal you want to hear.

Enjoyable listening & good DX -



Tropical Band Loggings

Sheryl Paszkiewicz
1015 Green Street
Manitowoc, WI 54220

NEW - Tom Kennedy and Glenn Hauser present DX Daily, a telephone service with up to the minute DX and program info. Call 1-900-656-5455. Cost is 95 cents/minute with normal length of 4 minutes. The first part of the service gives a review of exactly what countries will be featured so if you're not interested in that day's fare, you can hang up and just pay for the first minute. DX Daily is on 24 hours a day, 7 days a week!

- 1610 PIRATE Vo Laryngitis 3/13 0359 EG coughing, offer of studio tape, satirical rel (Lamb-NY)
- 1610 PIRATE R Fluffernut 3/12 2241 EG sped up ID, Merlin addr, Clas & Depeche Mode (Lamb-NY)
- 1610 PIRATE WCTU 3/12 2233 EG FC, rock, ID (Lamb-NY)
- 1610 PIRATE R Azteca 3/13 *0405 ID, Rocky-Bullwinkle IS, phony ads activities for SWL Fest--Sennitt-Magne mud wrestling (Lamb-NY)
- 1610 PIRATE Vo Pancho Villa 3/13 *0500 HC mx, ID, wild laughter, Beavis & Butthead, refs to Kneitel & Hauser (Lamb-NY)
- 1610 PIRATE KULP 3/12 *2149 ID, rock, ACE promo, BRS addr (Lamb-NY)
- 2010h MEXICO XEUB 2/5 1145 ranchera mx, ment 5 kW, still can't get QTH on this (Moore-IA)
- 2100h GUATEMALA LV Cuchumatanes 2/5 1139 ment Huehuetenango, 2x1050 (Moore-IA)
- 2325 AUSTRALIA VL8T 2/12 1144 mx of your life (Frodge-MI2)
- 2340 CHINA unid 2/1 1335 CH tlks, poss nx, short story (O'Hare-WA)
- 2390 GUATEMALA LV de Atitlán 2/20 0205 tlk, LA mx (Newbury-NE)
2/12 1138 rel w/lite vcsls, fair (Frodge-MI2) 0300 ID, marimbas (Urbelis-NY)
- 2415 CHINA Wenzhou 2/1 1340 tlks (O'Hare-WA)
- 2475 CHINA Zhejiang PBS 2/1 1346 class mx, ID, TP (O'Hare-WA)
- 2485 AUSTRALIA VL8K 2/3 1348 EG pop mx (O'Hare-WA)
- 2489.9p SULAWESI Ujung Pandang 2/26 1159 suspected carrier (Clark-ON)
- 2850 NORTH KOREA Pyongyang 2/4 1520 CH choral mx (O'Hare-WA)
- 3041 UNID 2/10 1045 Latin here, Colombian harmonic? (Johnson-MD)
- 3059h COLOMBIA Emisora Claridad 2/10 1025 mx, Todelar ID, canned ID, 3x1020 (Johnson-MD)
- 3100hp COLOMBIA R Fantasia 2/10 1040 2x1550 per Avatar (Johnson-MD)
- 3200 SWAZILAND TWR 2/6 *0257 IS/EG ID, into Ndebele (Alexander-PA)
0305 Afr Bible pgm, some RTTY (Urbelis-NY)
- 3210 MOZAMBIQUE RM 0315 60s mx, ID, nx, lcl info (Urbelis-NY)
- 3214.8 SULAWESI Manado 2/26 1155 fat carrier/low audio (Clark-ON)
- 3220 . TOGO Kara 0605 nx, FR info, IDs, hilife (Urbelis-NY)
- 3224.8 SUMATRA Tanjung Pinang 2/24 2302 Jak nx //other Sumatrans, this aft opening nice 48th (ugh!) birthday present (Clark-ON)
- 3230 PERU El Sol de los Andes 2/6 1040 anmts, folk mx (Moore-IA)
- 3231.9 SUMATRA Bukittinggi 2/24 2302 Jak nx, then way down (Clark-ON)
- 3240 SWAZILAND TWR 2/6 *0255 IS/EG ID, into Shona (Alexander-PA)
- 3245t INDIA Lucknow 3/12 0033 seemed //3365 (Clark-ON)
- 3250 HONDURAS Luz y Vida 2/12 1133 rel, ID (Frodge-MI2) 0320 EG rel, ID, req rpts, (EG Sat/Sun only) (Urbelis-NY)
- 3255 LESOTHO BBC 2/24 0400 EG nx, ID (Cleveland-NY)
- 3260 CHINA Guizhou PBS 2/4 1530 CH singing (O'Hare-WA)
- 3265 SUMATRA Bengkulu 2/24 2303 Jak nx, almost gone 2320 (Clark-ON)
- 3270 ECUADOR Ecos del Oriente 2/12 1017 ID, campo mx, nx (Frodge)
- 3280 ECUADOR LV del Napo 2/12 1005 atención anmts, Andean mx, rel ID (Frodge-MI2)
- 3290 NAMIBIA NBC 2/24 0400 ID, Afropops, poor (Cleveland-NY)
- 3295.4 KALIMANTAN Samarinda 2/26 1159 SCI, Jak nx (Clark-ON) 2/20 1140 mx, flutes, theme, ID, SCI, nx, suspect 10 kW (Clark-ON)
- 3300 GUATEMALA R Cultural 2/5 0955 LA vcsls, ID (Grenier-NV) 2/24 0400 rel, ID (Cleveland-NY) 2/8 0450 mx, ID (Kaminsky-NJ)

3315 INDIA Bhopal 3/12 0030 anmts, mx bridge, weak (Clark-ON)
3316 SIERRA LEONE SLBS 2150 EG nx, tlks, ID (Urbelis-NY)
3335 SWAZILAND TWR 2/6 *0259 IS/EG ID, into PT (Alexander-PA)
3355p NEW GUINEA R Simbu 2/13 1220 rel, hymns, EZL, anthem (Frodge)
3360 GUATEMALA LV de Nahuallá 2/20 0215 salsa/marimbas (Newbury-NE)
tent 1/15 1242 Quechua tlks (Grenier-NV)
3365 INDIA Delhi 3/12 0027 SC, anmt, TP, Hindi nx, solid (Clark-ON)
3366 GHANA GBC 2/22 0454 EG mx, choral mx, IDs, IS, nx (Serra)
3375 BRAZIL RN Sao Gabriel 2/12 0910 disco ad, World Cup promo,
fair (Frodge-MI2)
3380 GUATEMALA R Chortis 2/8 0100 marimba, ID (Terrence-NY)
3395.1 SUMATRA Tanjungkarang 2/24 2255 S8 lvl pops, ID, SCI (Clark-ON)
3578 MOLUCCAS RSPKDT2 Masohi 3/13 1140 good carrier but noisy, tnx
Martin/Foster. Bryant & Atkins also hrd this (Clark-ON)
3904.8 SUMATRA Banda Aceh 3/13 1159 SCT, nx (Clark-ON)
3915 KALIMANTAN Pontianek 3/13 1130 IS, clear ID, nx, tnx Martin
ex-3995 (Clark-ON)
3925 JAPAN R Tanpa 2/27 1035 JP tlks (Grenier-NV)
3980 WEST GERMANY VOA 2/24 0400 GM mx, tlks (Cleveland-NY)
3987.3 IRIAN JAYA Manokwari 2/26 1212 Jak nx in progress (Clark-ON)
3995 WEST GERMANY DW 2/24 0400 GM mx, ID, tlks (Cleveland-NY)
3995 RUSSIA Mayak 1800* RS ballads, tlk (Ryan-THAILAND)
4000.2 SULAWESI Kendari 2/26 1207 weak audio w/Jak nx (Clark-ON)
4003.2 SUMATRA Padang 2/24 2305 nx //3395, 4925, pops (Clark-ON)
4035 TIBET Xizang PBS IDs, chants //4820, 5950, 5995, 7110 (Ryan)
4040 RUSSIA R Moscow 2/5 1000 Mayak IS, YL annr (Grenier-NV)
4238.1 PERU Cajamarca 2/11 1025 campo mx, excited annr (Johnson-MD)
4299.8 PERU R Naylamp 2/5 1050 prayer, hallelujahs, TC (Moore-IA)
4419 PERU Frecuencia Lider 2/18 0237 folk mx, ads (Barrera-ARG)
4460 PERU Norandina 2/18 0253 messages (Barrera-ARGENTINA)
4485 RUSSIA Bashkir R 2/15 1008 RS tlks (Grenier-NV)
4505 PERU Horizonte 2/18 0914 interview, Electro Norte ads, ID,
rel pgm (Barrera-ARGENTINA)
4552.5 BOLIVIA Trópico 2/18 2253 IDs, messages (Barrera-ARGENTINA)
4600 BOLIVIA Perla del Acre 2/19 to 0305* messages, s/off anmts
ID, good (Barrera-ARGENTINA)
4620 IRAQ Baghdad HS 2300 AR nx, mx, hrd in USB (Urbelis-NY)
4680 BOLIVIA R Paititi 2/6 1015 IDs, CP folk, weak (Moore-IA)
4712.6 BOLIVIA Abaroa 1020 Andes mx, ID, weak (Urbelis-NY) 2/18
2318 msgs, instl, ID, ment 4760 kHz (Barrera-ARGENTINA)
3/16 1006 Andean vcls, buenos dias, ID, TC (Paszkiwicz-WI)
4732.3 UNID Latin continues around 2300 as late as 0045* (Johnson-MD)
4735 CHINA Xinjiang PBS 1145 nx (Urbelis-NY)
4740t TAJIKISTAN 2/16 1818 anmts, poss comedy (Serra-ITALY)
4753 BRAZIL R Educ Rural 2/12 2340 ment Campo Grande, Brasil, Rocky
theme mx (Frodge-MI2)
4753.4 SULAWESI Ujung Pandang 2/18 1230 nx? weak (Davenport-TN)
4759 PERU Tingo Maria 2/23 1041 OA mx, IDs, TCs (D'Angelo-PA)
4759.8 CHINA Yunnan 1/29 0012 CH tlk, FE folk mx (Serra-ITALY)
4760 ANDAMAN ISL 2/27 1150 amazingly good SC, tent ID (Clark-ON)
3/2 1145 SC, Ye Akashvani Port Blair hai. Nx (Ryan-THAILAND)
4760 INDIA AIR 2/5 1233 EG nx //4860, poor w/China (Moore-IA)
4760 VENEZUELA Frontera 2/10 1045 ads, promos, ballads (Davenport)
4765p BRAZIL Integracao 3/17 0240-0404* phone in-requests, ballads
ID, bom noche, Lobo song, anmts (Paszkiwicz-WI)
4765 UNID 2/5 1235 prayerful ME mx, very poor (Moore-IA)
4765.9 SUMATRA Medan 2/24 2256 vcl, low audio, 2330 tlks (Clark-ON)
4770 NIGERIA RN 2/28 0430 EG/lang mx, nx, poor (McCarthy-GA) 2/18
2240 nx, Afr. mx (Davenport-TN) 2/24 0430 TC, nx, kids
singing, IS, good (Cleveland-NY) 2/16 1826 tribal chant w/tam
tam, poss ID, nx, also 2/18 2009 EG ID (Serra-ITALY)
4770.3 ECUADOR Centinela del Sur 2/6 to 0328* ads, promos, pops, ID
NA (Alexander-PA)
4783 MALI RTV Malienne 2/6 2255 FR IDs, tlks (Klinck-NY) 2/19 0623
rel pgm? Koran, flutes (Serra-ITALY)
4790 PERU R Atlántida 2/12 0150 marches, folk mx, ment Univ.
Peruana, San Francisco, ID, nx (Frodge-MI2) 2/10 1107 ads
OA mx, weak (Davenport-TN)
4800 LESOTHO RL 2/24 0400 lang interview, ID (Cleveland-NY)
4805 BRAZIL Rdf Amazonas 2/27 1025 pops, poss ID (Grenier-NV)
4808 ARMENIA Yerevan 3/4 1435 Puttin on the Ritz & Besame Mucho
(Boulden-CA)

4810 SOUTH AFRICA R 2000 2/20 0225 continuous EZL (Newbury-NE)
4815 BURKINA FASO RTV Burkina 2/26 0607 FR vcls, fair (McCarthy-GA)
tent 2/19 0608 Afropops, tlk (Serra-ITALY)
4820 HONDURAS HRVC 2/3 1104 rel mx & tlk (Grenier-NV) 2/26 0400
SP anmts, mx, ID (Cleveley-NY) 2/25 0458 sermon, IDs, addr
(Serra-ITALY)
4820 INDIA AIR Calcutta back on the AIR. *1230 IS, ID, nx, airs
DW, RA & RN pgms in EG 1830 (Ryan-THAILAND)
4820t KAZAKHSTAN Almaty? 2/4 1332 nx in lang, sev ment Kazakhstan,
not //5035 (Moore-IA)
4825 GUATEMALA R Mam 0045 SP/lang rel pgm, ID (Urbelis-NY)
4825 UKRAINE RU 2/18 2001 UK tlk, IDs, nx (Serra-ITALY)
4830 VENEZUELA R Táchira 2/20 0240 salsa mx, fair (Newbury-NE)
2/14 1023 LA vcls, IDs (Grenier-NV) 2/24 0400 ID, rock, ID
(Cleveley-NY)
4835 GUATEMALA Tezulutlán 3/3 0105 tlks, letterbox? (Jordan-PA)
2/7 0230 xylo mx, ID (Kaminsky-NJ)
4835 MALI RTV Malienne 2/18 1928 FR/lang mx, pol tlk, IDs (Serra)
4835 PERU Marañon 1005 anmts, IDs, Andes mx (Urbelis-NY)
4840 INDIA Bombay *1230 IS, ID, folk mx, 1430 nx, 1730* (Ryan)
4845 MAURITANIA ORTM 2/16 1837 FR nx, IS, ID, Koran (Serra-ITALY)
4850 UZBEKISTAN Tashkent 2/16 1846 chants, IS, ID, nx (Serra-ITALY)
4851 ECUADOR Luz y Vida 2/23 1026 clear ID, rel, choir (D'Angelo-PA)
4865 COLOMBIA LV del Cinaruco 2/20 0305 ID, anmts (Newbury-NE)
tent 1/29 0836 LA mx, hvy QRM, poss ID (Grenier-NV) 3/2 0230
lively chit chat, IDs, ads, skits, slick prod (Jordan-PA)
2/24 0400 SP ID, tlks, ment Caracol (Cleveley-NY) 2/19 0450
ID, Caracol, LA mx (Kaminsky-NJ) 2/19 0637 Caracol //5075
pop songs (Serra-ITALY)
4870 BENIN ORTB 2/20 2250 FR pops, hilife, IDs (Clar-NY) 2/25 0508
Afropops, ment Parakou, war, lang tlk (Serra-ITALY)
4875 BRAZIL Rdf Roraima 2/26 0007 ID, FC, sports, ment Boa Vista
(Lamb-NY) Super R Roraima 0030 ads, TC (Urbelis-NY)
4875 CHINA Vo Jinling 2/10 1152 CH tlks (Terrence-NY)
4880 BANGLADESH RB 2/11 1202 nx, ID, mx, tlk feature (D'Angelo-PA)
4890 PERU R Chota 2/10 0130 echo anmts, huayños (Davenport-TN)
4902t SHRI LANKA SLBC Sinhala 2/6 0140 tlks, chant (Serra-ITALY)
4904.5 CHAD RNT 1/23 1822 ment N'djamena, chants, FR ID (Serra)
4905 CHINA China Natl R 2/20 2257 EG lang lesson, ID, nx (Clar-NY)
2/13 2318 CH tlks to 2329* (Frodge-MI2) 2320 tlks (Urbelis-NY)
4909.8 ZAMBIA ZNBS 2/6 0314 tlk, Radio 1 IDs, Afropops (Clar-NY)
2/2 0315 lang vcls, best in a long time (McCarthy-GA) 0305
lang nx, hilife mx (Urbelis-NY)
4910 UNID 2/4 1326 Indian vcls, no TP at half-hour, not //4860
do the Indians always have pips? (Moore-IA)
4915 GHANA GBC 3/4 0606 EG nx, tlk of PLO, static (Boulden-CA)
2/25 0525 lang tlk, bye bye, EG ID, TC (Serra-ITALY)
4915 PERU R Cora 0315 pol speech, ID, tangos (Urbelis-NY)
4915 UNID 2/6 0111 poss AR, chants ment Pakistan, Islam, Nepal,
over South America! (Serra-ITALY)
4920 ECUADOR R Quito 2/21 0103 tlk, anmts, poor (Newbury-NE)
2/16 1130 IDs, nx of Quito (Robinson-TN) 2/25 2359 tlks,
promos, ID, ment Ecuador, TC, Bee Gees (Lamb-NY) 2/10 0015
sports coverage, TC (Davenport-TN) 3/3 0300 futbol, IDs
other scores ment (Jordan-PA)
4920 INDIA Madras 2/6 0050 mx, EG ID, IS, ads (Serra-ITALY)
4925 SUMATRA Jambi 2/19 2246 vy good vcls, SCI (Clark-ON)
4925.6 UNID 2/15 1039 ment Bolivia, hvy QRM (McCarthy-GA)
4935 BRAZIL Capixaba 0530 speech, ID, little mx (Urbelis-NY)
4935 PERU R Tropical 2/13 to 0412* IDs, huayños, NA (Alexander-PA)
1015 Andes mx, IDs, ads (Urbelis-NY)
4940 INDIA Guwahati 3/12 0014 IS, anmt, choral mx, SC, sitar (Clark)
4940 TAJIKISTAN R Moscow 2/21 0111 Joe Adamov pgm (Newbury-NE)
4950 ECUADOR Bahai 1100 Andes mx, TC, ID (Urbelis-NY)
4959.7 VIETNAM VoV 2/11 1210 drama, some laughter & screaming //
stronger 10059 (D'Angelo-PA)
4960 CLAND VORGAN 2/26 *0447 cock crow, guitar, PT ID, anthems
//better 9550 (Alexander-PA)
4961 ECUADOR Federacion 2/12 1140 kids singing, rel, SP ID (Lamb-NY)
0100 speech, IDs, FC to 0148* (Urbelis-NY)
4964.9 BOLIVIA R Juan XXIII 2/6 1001 carnival style mx, ID, poor w/
San Miguel on 4965.9 (Moore-IA)

4965.9 PERU R San Miguel 2/5 1040 ID, TC, OA mx, ment Calca (Moore-IA)
 4969.5 PERU R Imagen 2/5 1017 trop mx, anmt for cafeteros (Moore-IA)
 4970 INDIA AIR Shillong 2/24 1515 EG ID for NE svc (Howard-CA)
 4970 MYANMAR R Myanmar 2/26 1508 EG nx, ID, not //5990 (Howard-CA)
 4970 SHRI LANKA SLBC Special Events stn (Johnson-MD)
 4975 COLOMBIA Ondas del Orteguzaza 1045 Todelar, IDs (Urbelis-NY)
 4975 PERU R del Pacifico 1100 rancheras, IDs, ads (Urbelis-NY)
 4980 VENEZUELA Ecos del Torbes 2/3 1109 chime IDs, tlk (Grenier)
 3/3 0145 ID, poss nx, vcls (Jordan-PA)
 4990 INDIA AIR Madras 2/6 to 0045* folk mx, ID, Tamil (Serra)
 4990.9 SURINAM R Apintie 2/13 0500 DT ID, T40 mx, in clear after
 Ancash s/off 0500 (Alexander-PA) 2/24 0400 DT ID, tlks,
 interviews (Cleveland-NY)
 4991 PERU Ancash 2/19 0625-0735 IDs, SP ballads, huayños (Alex.)
 2/17 1011 OA mx, SP IDs, TCs (Klinck-NY) 1030 nx, IDs, Andes
 mx, anmts (Urbelis-NY) 2/18 0202 folk mx, ID (Barrera-ARG)
 5000.2t JORDAN RJ 2/13 2200 AR here, half harmonic, feeder? (Johnson)
 5005t NEPAL RN 2/12 1231 oriental type mx, weak (Frodge-MI2)
 5010 CAMEROON Garoua 3/3 0505 EG nx, IDs (Lawrence-NY)
 5010.3 ECUADOR Escuelas Radiofonicas Pop 2/5 to 0257* SP/Quechua, HC
 mx, huayños, IDs (Alexander-PA) 2/10 to 0303* rustic vcls, ID
 Quechua tlk, no NA (D'Angelo-PA) 2/11 0237 Quechua mx, ID to
 0300* (Klinck-NY) 2/18 0220 folk mx, Quechua, ID (Barrera-ARG)
 5015 BRAZIL Pioneira 0830 Brasopops, ads, ID (Urbelis-NY)
 5015 PERU Estacion Tarapoto w/xmtr drifting probs (Johnson-MD)
 5020 NIGER LV du Sahel 3/3 0520 FR/lang folk mx, tent ID (Lawrence)
 2/25 0534 chant, flute/drum, ID, nx (Serra-ITALY)
 5025 AUSTRALIA VL8K 3/2 1446 ABC Radio ID, lite mx, natl nx (Howard)
 5030 RUSSIA R Moscow 2/12 1500 EG nx (Boulden-CA)
 5032 UNID 2/5 1315 threshold mx, separable from 5030 (Moore-IA)
 5033.7 CENT AFR REP 2/4 0430 FR piano IS, orch, ID, hilife (Lawrence)
 5035 KAZAKHSTAN Almaty 2/5 1222 exotic string mx //5020 (Moore-IA)
 2/5 1619 folk mx, ID, chant //5260 (Serra-ITALY)
 5040 SUMATRA Pekanbaru 2/24 2305 nx, anthem, tlks (Clark-ON) 2/20
 2259 SCI, nx (Clark-ON)
 5047 TOGO Lomé 2/11 2307 oldies in lang/FR (Frodge-MI2) 2/27 2246
 FR jazz, Cameroon blues, ID, nx, FR pops (Lamb-NY) 2/22 0512
 techno mx, disco, ID, nx summary (Serra-ITALY)
 5049.8 ECUADOR R Jesus del Gran Poder 2/7 0100 some of best LA mx
 I've ever hrd, Gran Poder IDs (Terrence-NY) 2/18 0954 rel tlk
 ID (Barrera-ARGENTINA)
 5050 CHINA Guangxi PBS 2/4 1321 CH tlks (Moore-IA)
 5050 ECUADOR LV de Riobamba 3/1 1107 TC, echo ID, pol tlk, bank ad,
 tlk abt gas prices (Bickus-VA) IS this something new? Usually
 R Jesus del Gran Poder here--sp
 5050 INDIA AIR Aizawal 2/27 1233 //4860 nx & CH poking thru (Clark)
 2/24 0400 ID, SP tlks, class mx (Cleveland-NY)
 5050 TANZANIA RT 2/8 0423 EG UN pgm, clear ID, lcl mx (Klinck-NY)
 5055 IRIAN JAYA Nabire back on 2/26 1225 Ramadan special (Clark-ON)
 5056t FRENCH GUIANA RFO Cayenne 3/1 0955 FR tlks (Grenier-NV) 2/21
 0506 Le Journal, cmtry, promo, mx, RFI pgms (Serra-ITALY)
 5075 COLOMBIA Caracol 2/15 1130 IDs, Banco Popular ads (Robinson)
 3/1 0949 Caracol ID, tlk (Grenier-NV) 2/24 0400 tlks, ID
 (Cleveland-NY) 2/19 0650 pops, Caracol, TC //4865 (Serra-ITALY)
 5131 PERU Vision 2000 2/18 0147 cumbias, ID, mx (Barrera-ARG)
 5240t TIBET Lhasa 2/20 1216 CH tlks, instls (McCarthy-GA)
 5320 CHINA China Natl R 2/12 1158 tlks, 1200 tones (Frodge-MI2)
 1230 CH IDs, tlk, trad opera mx (Robinson-TN)
 5889.5 BULGARIA RB or Varna 2/19 *0259-0400* IS, into lang (Alex.)
 5895 CROATIA Croatian R 2/19 2155 folk mx, EG nx (Alexander-PA)
 2/11 2154 pops, TP, ID, nx, good nite (D'Angelo-PA)

This month reporters from 13 states, 1 province & 3 countries! Thanks to
 all for your loggings. Remember to get the new catalog from Tiare
 Publications, only \$1.00. Write P. O. Box 493, Lake Geneva, WI 53147.
 Next deadline April 22. Happy Easter.



International Band Loggings

Wallace C. Treibel
357 N.E. 149th Street
Seattle, WA 98155

- 5905nf? BRAZIL Swiss R Int relay in EG 0120, feature, site ID, into SP (Frodge MI 2/12)
- 5915 SLOVAKIA RSI in EG 1930, nx, rules for foreign visitors (Placanica ITALY 2/8)
- 5940nf? SLOVAKIA AWR in GM 0748, class mx, QTH, ID in several langs (Serra ITALY 2/20)
- 5970 BRAZIL R Itatiaia in PT 0909, ID, ad, jingle, ment Brazil (Paszkievicz WI)
- 5975 COLOMBIA R Macarena in SP 0744, excited preaching, ID on hr (Klinck NY 2/6)
- 5981 GUATEMALA AWR in SP 1205, relig songs, tlk, g (Wilkins MS 3/11)
- 59876 INDONESIA RRI Manado in IN 1135, repl 3214.8, instrml mx, Jakarta nx 1200, ID, lagu vcls, promos, drama (Clark ONT) in IN 1605*, nx, lite mx (Howard CA 2/24)
- 5995nf AUSTRALIA RA in EG 1258*, mx, soccer, IS, ID, nx (Jordan PA 2/22, Howard CA)
- 6000 BRAZIL R Guaiba in PT 2315, tlk, promos, ID, pop mx, ads (Clar NY, Urbelis NY)
- 6000 CANADA Canadian Forces Net via RCI in EG/FR 0400*, sports, wx, ID, rept on military operations, pop vcl, into FR pgm (Jordan PA 3/3, Tucker GA 2/23, Carson OK)
- 6005 ITALY RAI in EG/FR 0115, peppy mx, ID in EG, into FR pgm (Frodge MI 2/12)
- 6010 CUBA RHC in EG 0241, "DX'ers Unlimited" w/Arnie Coro, lcl mx (Tucker GA 3/8)
- 6010 MEXICO R Mil in SP 1106, ballads, instrmls, ID after each song (Frodge MI 2/12)
- 6020 AUSTRALIA RA in EG 1000, C&W mx, nx, feature, //6080 (McCarthy GA, Grenier NV)
- 6025 BOLIVIA R Illimani in SP 0958, NA, IDs, fqys, prayers, bible tlk (Urbelis NY)
- 6025nf? UZBEKISTAN R Tashkent in EG 1330, nx, tlk on capitalist banking (Moore IA 2/5)
- 6035 JORDAN R Amman in AR 2030, nx, interview, tlks, ID, //9830 (Urbelis NY)
- 6035 UNITED KINGDOM R Korea relay in EG 2030, "SW Feedback", ID (Placanica ITALY 2/20)
- 6040 UNITED KINGDOM VOA relay in EG 2010, "VOA Jazz Hour", editorial (Placanica ITALY 2/14)
- 6040 BRAZIL R Clube Paranaense in PT 0805, pops, ads, IDs, TC, anmts (Urbelis NY)
- 60452 PERU R Santa Rosa in SP 1008, nx, ID (Rausch NJ 2/20)
- 6085 UNITED KINGDOM R Japan relay in EG 0530, ID, "Media Roundup" (Placanica ITALY)
- 6135 BOLIVIA R Santa Cruz in SP 1010, Andes/Indio mx, IDs, lcl info (Urbelis NY)
- 61498 THAILAND Amporn Sathan Or Sor in lang? 1200*, US oldies, ID (Ryan THAILAND)
- 6155 SINGAPORE R One in EG 2320, ID, pop mx, nx, travel pgm (Rausch NJ 2/13) in EG 1045, many ads, pops, nx update (Ryan THAILAND 3/7)
- 6155 BOLIVIA R Fides in SP 0602*, vcls, anmts, ID, QTH (Paszkievicz WI 2/13) in SP 1049, relig tlk, ID, relig mx bridges, //4845 (Johnson MD 2/16, Klinck NY 2/7)
- 61606 ARGENTINA R Malargue in SP 1013, nice mx, canned ID, g (Johnson MD 2/11)
- 6160 PORTUGAL R Canada Int relay in EG 0400, mailbag, ID, QTH (Placanica ITALY 2/13)
- 6170 COLOMBIA LV del Selva in SP 1045, nx, IDs, ads, anmts (Urbelis NY)
- 61738 PERU R Tawantinsuyo in SP 1008, ID, campo mx (Johnson MD 2/1) usual s/on 1030.
- 6180 ARGENTINA RN Mendoza in SP 0850, instrmls, //6060 after 0900 (Johnson MD 2/10)
- 6190 PERU R Oriente in SP 1015, Andean mx, IDs, ads, TC, DJ, f/o 1130 (Moore IA 2/6, Urbelis NY) in SP 2345, sports, slogans, LA mx (Clar NY 2/20, Alexander PA 2/20)
- 6195 SINGAPORE BEC relay in EG 1200, ID, ltrs from Drs Freud/Jung (Robinson TN 2/20)
- 62354 DOMINICAN REPUBLIC R Quisqueya in SP 2325-0130+, anmts, IDs, LAM mx, US/SP pops, Beatles mx in SP (Alexander PA 2/20, McCarthy GA 2/19)
- 64001 NO KOREA Pyongyang BC Stn in KR 2255, tlk, folk mx, //62497 (Alexander PA 2/19)
- 6560 IRAQ BCS Rep of Iraq in AR 2030, lcl info, AR mx, Koran, hrd on USB (Urbelis NY)
- 65444 UNIDENTIFIED R Centinela La Voz de ??? in SP 0503* (Johnson MD 2/16) Any help?
- 67649nf? THAILAND Bangkok Meteorological Stn at 1244 w/aero wx? in Thai, in EG 1249 with 2 ments of "Thai Radio", melodic IS, f in USB (Clark ONT 2/27)
- 6890nf? BOSNIA-HERCEGOVINA RBH in lang 2255-0100+, lite & lcl folk mx, pips, ID at top of each hr, f w/suppressed carrier-USB (Alexander PA 2/19-20)
- 6900 TURKEY Turkish Meteorological Svce in TK 0510, TK vcls, f (McCarthy GA 2/13)
- 7125 CYPRUS CBC via BEC relay in GK 2300, tlks, interviews, ID, g (Clevely NY 2/20)
- 71717 ALBANIA R Tirana in IT 1735, nx, ID, flute mx, IS, //5985 (Serra ITALY 2/3)
- 71732 INDONESIA RRI Serui in IN 1215, Jakarta nx, NA, //47534, lcl ID, pop mx pgm, lagu vcls, C&W mx, fgy, Qu'ran, Love Ambon at s/off (Clark ONT 2/27) Repl 46064
- 71903 EQUATORIAL GUINEA R Africa in EG *0501, s/on w/long NA, fgy, QTH, ID as "Radio Africa Number Two", relig pgming, f due to QRM (Alexander PA 2/26)
- 7195 UKRAINE RUI Kiev in GM 0017, much tlk, mx between monologue, ID (Levison PA)
- 7200 SUDAN Repub Sudan R in AR 2146, cmntry, ments of Sudan, QRM (Frodge MI 2/12)
- 7255 NIGERIA VON in EG 0530, nx, top stories, events in Africa, f (McCarthy GA 2/15)
- 7260 RUSSIA R Nederland relay Petropavlovsk in EG 1020, "Happy Station" (Grenier NV)

7275 ITALY RAI in RS 0533, IS, bells, ID, IT pop mx, test tone (Lamb NY 3/2) in IT/EG *0414, bird chirps IS, ID, nx in IT 0415, EG nx 0425, //5975 (Alexander PA 2/19)

7275 LIBERIA ELBC in EG *0655, NA, ID, EG rel tlk, choral/folk mx (Alexander 2/6)

7280 BOTSWANA VOA relay in EG 0444, mx, Olympics nx, sked, fqy (Wilkins MS 2/13)

7305 KAZAKHSTAN R Nederlands relay in EG *0025, IS, site ID, nx, f-g (Rausch NJ 2/27)

7365 ALASKA KNLS in EG 1300, IS, ID, mailbag, SWL tips, g (Anderson MI 2/19)

7375 COSTA RICA RFPI in EG 0400, DX pgm, mailbag, ID (Carson OK, Tucker GA 3/9)

7455 GUAM KSDA in CH 1500, ID in EG, relig? pgm, QTH (Placanica ITALY 2/20)

7465 ISRAEL Kol Israel in EG *2230, nx features, nx headlines, theme (Jordan PA 3/8)

9375usb COSTA RICA RFPI in EG 0200, World of Radio pgm #732, g (Wilkins MS 2/20)

9380 GREECE VOG in EG 0135, investigation of Serajevo shelling, mx (Newbury NE 2/21)

9400nf? PHILIPPINES FEBC in CH 2229, relig pgm, ID, IS, f (Lamb NY 2/28)

9400usb COSTA RICA RFPI in EG 1233, mail, UN pgm on science, g (Wilkins MS 3/5)

9420nf? CZECH REP R Prague in EG 1807, IDs, "The Arts", rock mx, IS, ID, f (Lamb NY 3/5)

9425 NO MARIANAS KHBI in EG 1236, rel tlk, mx, //9455 (Wilkins MS 3/11)

9440nf? CZECH REP R Prague in EG 0330, nx, cmntry, better on //7345 (Alexander PA 2/5)

9445 TURKEY VOT in EG 2141, "Turkish Proverbs", ID, QTH, sked, IS, f-g (Lamb NY 2/28)

9455 SLOVAKIA AWR in FR/EG 1800, IDs, rel pgm, QTH in Abidjian (Placanica ITALY 2/16)

9515 SO AFRICA BBC relay in PT *0530, IS, Big Ben, ID, fqys, nx, mx (Jordan PA 2/11)

9525 INDONESIA RRI Jakarta in IN 1404, rel chants, nx? at 1400 (Clark ONT 2/20)

9530 SINGAPORE SRI in EG 1100-1300*, nx, promo, mx, ID as "RSI", financial rpt, pop mx, req rpts/comments, QTH (Ryan THAILAND 3/7, D'Angelo PA 2/9, Grenier NV 2/15)

9530 PHILIPPINES R Veritas Asia in EG/Burmese *1127, EG ID, into BM (Howard CA 2/16)

9540nf SPAIN REE in EG 0000, ID, nx, "Panorama", class mx (Pennisi NJ, Newbury NE 2/21)

9540 UZBEKISTAN R Tashkent in EG/lang *1200, IS, NA, tlk, nx (Wilkins MS, Lane ONT)

9560 THAILAND VOA relay in EG 1233, ID, feature, nx (Rausch NJ, Lane ONT 2/18)

9560 UKRAINE ROI in UK 0800, IS, ID, fqy, nx (Serra ITALY 2/5)

9560 ETHIOPIA VoE in EG 1459, "Jack-in-the-Box" IS, gone 1500 w/R Jordan* (Alexander)

9580 GABON Africa #1 in FR 2230, interviews, Afro mx, ID, g (Cleveland NY 2/20)

9585 SO AFRICA Channel Africa in EG *0250, IS, IDs, "Dateline Africa" (Lamb NY 3/7)

9590 NORWAY RRI in EG 1820, ID, Olympics rpt (Placanica ITALY 2/21, Hardester NC)

9605 SINGAPORE BBC relay in Bengali 1640, sitar mx, tlks w/Brit accent (Newbury NE)

9610 RWANDA RTV Rwandaaise in FR 0433, nx, mx, ID (Klinck NY) 1445 (Frodge MI 2/12)

96124 INDONESIA RRI Jayapura in IN 1359, IS, lcl nx, mx, ID, chorus (Clark ONT 2/20)

9620nf MOLDOVA R Dniester in EG *2130, IS, ID, sked, nx, press review, interview, pop vcls, R Moscow 2200 (Rausch NJ 2/26, Alexander PA 2/27, Jordan PA 3/3)

9625 CANADA CBC North Service in langs 1243, Canadian Media Awards (Wilkins MS 3/11)

96401 ALGERIA VO Free Sahara via RTVA in SP *2200, IS, ID, pol tlk, mx (Rausch 2/13)

9645 AUSTRALIA RA in EG 2250, "Network Asia", nx, cmntry (Rausch NJ 2/13)

9650 CANADA R Korea relay in EG 1142, spec bcst from the Samoa Bcst Service, ZAP much like St Helena bcst, many IDs, nx, island mx (Hardester NC, Urbelis NY 2/20)

9675nf PAPUA NEW GUINEA NBC PT Moresby in EG 1100, Sun classical mx, ID, C&W mx, W ancr (Hardester NC 2/20, Grenier NV 3/6, Anderson MI 2/13)

9680 THAILAND VOA relay in CH 1700*, top 40 mx, tlk, EG ID (Paszkievicz WI 2/5)

9700 BULGARIA RB in EG 1830, fqys, ID, features, nx (Lamb NY, Frodge MI, Tucker GA)

9715 THAILAND VOA relay in CH 1401, tlk re Olympics, fill mx, remote rpt (Lamb 2/18)

9725 ITALY RAI in EG 0100, nx, cmntry, //6005, 11800 (Alexander PA 2/19)

9746 BAHRAIN R Bahrain in AR 1322, lcl mx, tlk, ID (Klinck NY 2/13)

9765 MALTA Vo Mediterranean in EG 0600, IDs, mx, SWL pgm (Placanica/Serra both ITALY)

97798 YEMEN Rep Yemen R in AR 2238, AR mx, male DJ, ID on hr, nx? (Klinck NY)

9780 PORTUGAL RPI in EG 2000, ID, nx, "Kaleidoscope" (Placanica ITALY 2/22)

9810 SLOVAKIA R Slovakia Int in EG 0112, interview, ID, nx (Tucker GA, Lane ONT)

9810 SEYCHELLES FEBA in EG *1500, "Network", ID, mx, India beam, QTH (Ryan THAILAND)

9860nf AUSTRALIA RA in EG 0730, nx, ID, "At Your Request" (Rausch NJ, Grenier NV 3/14)

9885 SWITZERLAND SRI in EG 0128, nx, ID, fqys, into SP 0130, g (Wilkins MS 3/11)

9930 HAWAII KWHR in EG 1222, relig mx, IDs, QTH, sermon (Grenier NV, Lane ONT) in CH 1305-1353*, emotive tlks by OM, languid tlks by YL, skits, mx (Jordan PA 3/3)

9950 INDIA AIR Delhi in EG 2110, HD mx, mail, nx //7412, 11620 (Lamb NY, Urbelis NY)

100114 VIETNAM Voice of Vietnam in CH 1300, ID, tlk by YL, vocals (Rausch NJ 1/30)

11402 ICELAND INBS Reykjavik in IC 2310, IC role in Europe, nx, exc (Bickus VA 2/28)

11430usb CANARY IS REE Spain relay in SP 1845, IDs, sports nx, mx, info (Urbelis NY)

11660 AUSTRALIA RA in EG 1900, ID, C&W mx, sports (Robinson TN, Newbury NE, Frodge MI)

11700 NO KOREA R Pyongyang in EG 2300, IS, NA, ID, world nx, cmntry (Cleveland NY 2/20)

11705 THAILAND VOA relay in EG 1455-1559*, editorial, ID, nx, feataures (Lamb NY 2/27)

11735 NEW ZEALAND RNZI in EG 1850, IS, ID, pop tunes, jazz, nx (Serra ITALY 2/1)

11755 FINLAND RF in EG/FN 0747, lang lesson, ID, IS, mx, nx in FN 0800 (Serra 2/5)

11785 COLOMBIA R Nac in SP 0130, ID, mx variety (Moore IA) opera/pops 1826 (Frodge MI)

11800 AUSTRALIA RA in EG 1330, pop mx w/DJ, ID, xmsn targets, fqys, g (Jordan PA 3/2)
 11830 BRAZIL R Anhanguera in PT 0805, BR pop mx, ads, IDs, TC (Urbelis NY)
 11835 ECUADOR HCJB in EG 0800, DX pgn, tlk on AIDS, //8745 (Placanica IT, Boulden CA)
 11835 GABON R Japan relay in IT 0545, "Appuntamento Domenicale", IDs (Placanica ITALY)
 11840 PORTUGAL RDPI in PT 2013, sporting event live, //9570, 9635, g (Lamb NY 2/25)
 11875 CUBA RHC in PT 2007, theme mx, ID, nx re Mexican rebellion, g (Lamb NY 2/25)
 11900 NETHERLANDS RN Plevio in SP 1230, IDs, "Radio Enlace" DX pgn (Placanica 2/11)
 11910 AUSTRALIA RA in EG *0615, IS for 15 min, intl rpt, TC, sked, nx, mx (Jordan PA)
 11915 BRAZIL R Gaucha in PT 0030, sports cnty, ID, LA mx, ads (Moore IA, Terrence NY)
 11955 SINGAPORE BBC relay in EG 2250, sports roundup, "Newsdesk" (Rausch NJ, Lamb NY)
 11990 KUWAIT RK in EG 1800-2100*, pops variety, IDs, nx, cmtry, NA, Islamic relig
 feature, co-channel QRM from Egypt *2000-2100* (Alexander PA 2/27, Lamb NY 2/25)
 12035 SWITZERLAND SRI in EG *1958, xmsn to Africa, "Dateline"nx cntry (Frodge MI 2/11)
 12080 BOTSWANA VOA relay in FR/Hausa 2025, ID, Tina Turner mx, ID, //15625 (Lamb 2/18)
 13710 BOTSWANA VOA relay in EG 1730, "Music USA" C&W mx (Pennisi NJ 2/11)
 13760 NO KOREA R Pyongyang in EG *0000, nx, cmtry, chorus, sked, NA, g (Jordan PA 3/5)
 15090 VATICAN STATE VR in HN 1512, rel tlk, ID, IS, to Tamil 1520, //11640 (Lamb 2/24)
 15115 NEW ZEALAND RNZI in EG 0225, rugby coverage (Jordan PA) cricket game (Tucker GA)
 15155 NETHERLAND ANPILLES RN relay in DT 2155, tlk on banks, stocks etc. (Newbury NE)
 15195nf CUBA RHC in SP 2100, ex-17835, ID, Cuban mx, nx, mx accents between nx topics,
 interviews, fqys, targets, //13715usb, 2258* s/off (Jordan PA, Alexander PA 2/6)
 15200 FRENCH GUIANA RPI relay in SP 2315, nx on Japanese rocket, exc (Bickus VA 2/3)
 15220 ANTIQUA BBC relay in EG 1245, sports roundup, Olympic results (Pennisi NJ 2/23)
 15240 SOUTH AFRICA Channel Africa in EG 1704, nx, sked, jazz mx (Frodge MI 2/12)
 15240 SWEDEN RS in EG 1330, IDs, nx, "...in touch of Stockholm",exc (Robinson TN 2/17)
 15340 RWANDA R Rwanda in FR 2006, African nx spots w/remotes, pop/C&W mx (Frodge 2/11)
 15345 MOROCCO R Marocaine in AR 1358, AR mx, tlk, //15335 (Tucker GA 3/3)
 15350 LUXEMBOURG RL in GM 1945-2130, US pop mx, ads, IDs, nx, door bells (Urbelis NY)
 15450 PHILIPPINES FBBC in EG 0006, Christian mx, rel tlks, promo, ID, f-p (Lamb 3/1)
 15610 GUAM KIMR in EG 1500, "The Worship Hour", ID, f (Placanica ITALY 2/20)
 15630 GREECE VOG in EG/GK 1439, nx in EG, into GR mx & tlk (Tucker GA 3/6)
 17510 HAWAII KWHR Naalehu in EG 0003*, relig mx, many IDs (Grenier NV 2/19)
 17555 HAWAII KWHR Naalehu in EG 0100, fqys, TC, vocals, ID, f (Levison PA 2/11)
 17630 GABON Africa #1 in FR 1558*, African mx, reggae, IDs, fqys, g (Lamb NY 2/24)
 17635 SWITZERLAND SRI in EG 1700, ID, nx of polio, WHO, Olympics, g (Robinson TN 2/20)
 17840 NORWAY RNI in EG 1015, ID, Olympics rpt from Lillehammer (Placanica ITALY 2/22)
 17845 SPAIN REE in SP 1334, ID, instrumental mx, tlks (Tucker GA 2/12)
 17870 SWEDEN R Sweden in EG 1330, ID, nx of global warming (Pennisi NJ 2/12)
 179002 PAKISTAN RP in EG/AR 0806, chants trans into EG, ID, mx, //21590 (Serra ITALY)
 21535 ITALY RAI in IT 1600, IDs, tlk re Angola, Algeria, nx, g (Robinson TN 2/20)
 21590 NETHERLAND ANPILLES RN relay in EG 1840, nx, wx, ID (Bickus VA, Levison PA 2/26)
 21660 ASCENSION ISLAND BBC relay in EG 1515, classical mx w/cntry, g (Levison PA 2/10)
 21740 AUSTRALIA RA in EG 2331, feature, ID, fqys, IS, //15365, 17795 (Lamb NY 2/25)

CLANDESTINE STATIONS

7290 A Voz da Resistencia do Galo Negro - Angola in PT 2000-2106*, variety of Af pop
 & folk mx, IDs 2038 & 2102, NA, f-g w/Ham QRM (Alexander PA 2/6)
 9550 A Voz da Resistencia do Galo Negro - Angola in PT *0446-0715+, s/on w/cock crow,
 guitar/ID sequence, NA, Afr choral mx, Big Ben chimes, nx, IDs, g, //4960 weak
 (Alexander PA 2/6)
 11942 La Voz del Cid - Guatemala in SP 1206, Castro cntry, promo, f (Frodge MI 2/13)

A few of the contributions that I received this month omitted such essential information as the time of day/night the station was heard, or even the name of the contributor!. Please check your loggings carefully to see that they are complete. In view of the poor to mediocre reception conditions in February, it's reassuring to note that there were as many loggings made as indicated above. I checked my antenna connections to see if they were at fault but finally decided from the WWV propagation reports that it was a wiser decision to watch television instnd. Hope things improve soon. Best regards to all.

English Schedules

Tom Sundstrom
 P.O. Box 2275
 Vincentown, NJ 08088-2275
 MCI Mail 244-6376
 Fax 609-859-3226
 PICS Online RBBS 609-753-1549
 GEnie T.SUNDSTROM



Prepared 3/22/94 at 11:48 PM.

Thanks to Dan Ferguson (VOA), Hans Johnson (MD), and Jonathan Marks (R Netherlands).



If you weren't there, you missed one heck of a party in Kulpville last month. The dates for the eighth annual Winter SWL Festival are March 16-18, 1995. Plan

now so there are no excuses later on...

One of the more interesting recent changes is the VOIRI move to 7100 kHz. The signal is quite strong here. 9022 remains in parallel.

Glenn Hauser criticized this column for failing to list *World of Radio* times on KWHR. I found the schedule announcements, heard only once, to be confusing. Two days ago I received program schedules direct from LeSea Broadcasting. The WHRI air times to

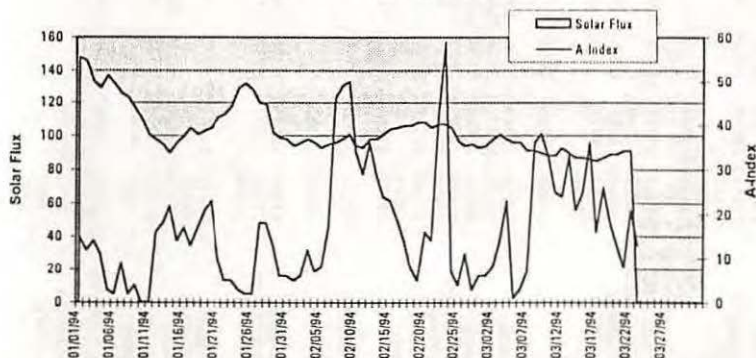
be Sa 0130 and 0600, Su 0600; on KWHR Sa 0600, Su 0600 UT. It appears to me any other air times are temporary.

Due to budget cuts the BBC is reducing broadcast hours March 27. To NAM, some popular frequencies are delayed opening by an hour or two, including 5975 and 9515. Only 6195 will be active between 11 and 12 UT. And *Waveguide* drops the We 0415 release and adds Sa 0715. Th 0130 and Sa 1030 continue.

Undoubtedly we have not caught up with all the time-shifting going on. If you can't find what you're looking for (especially from Europe) look an hour earlier.

Thanks to the assistance of John Wilson of Lowe Manufacturing, we're pleased to announce a joint venture and three new software products for the Lowe HF-150 receiver. See the press release elsewhere in the Journal, or write for a catalog

Solar Flux & A-Index: Jan-Mar 1994



Authorized Dealer & Skywaves Antennas	PC Software by W2XQ English Language SWBC Schedules JRC/Kenwood/Lowe Receiver Control TRS Time for Windows™	Send #10 SASE (2 IRCs) for catalog or download TRS_CAT.EXE off the Pics OnLine! BBS at 609-753-2540.
--	---	--

TRS CONSULTANTS, PO Box 2275-NA, VINCENTOWN, NJ 08088-2275

Internet 2446376@mcimail.com

SCHEDULES BY SURDSTROM

START End	COUNTRY	STATION	FREQUENCIES						TARGET AREA	NOTES	LAST Update		
0000													
0030	Australia	R Australia	17860	17750	15510	15365	13605	13605	As/PacPapNG	03/09/94			
2400	Costa Rica	R for Peace Int'l	21465U	15030	9400U	7375			LAm/NAm	03/11/94			
0100	Guam	KSDA	17645						sAs	03/08/94			
0200	USA	KWHR	17510						Pac	03/08/94			
0030	USA	VOA	1548	1260					ME	03/18/94			
0030													
0100	Australia	R Australia	17860	17795	15415	15365	13755	13605	As/PacPapNG	03/09/94			
0130	Iran	V of Islamic Rep of Iran	9022	7100					NAm	03/11/94			
0127	Netherlands	R Netherlands	9840U	6165	6020				eNAm	03/08/94			
0127	Netherlands	R Netherlands	12025	9860					sAs	03/08/94			
0300	USA	VOA	1548						ME	03/18/94			
0050													
0110	Italy	RAI	11800	9725	6005				NAm	03/11/94			
0100													
0400	Australia	R Australia	21595	17880	17750	17715	15240	11880	11720	As/PacPapNG	03/09/94		
0600	Australia	R Australia	17860	17795	15415	15365	15240	13605	As/PacPapNG	03/09/94			
0159	Canada	R Canada Int'l	11940	11845	9755	9535	9120		Carib/LAm/NAm	03/18/94			
0150	Germany	R Deutsche Welle	11865	9700	9650	6145	6085	6040	NAm	03/08/94			
0130	Hungary	R Budapest	15220	11910	9835	5970			NAm	03/08/94			
0200	Japan	R Japan	17845	17810	15195	11910	11860	11840	GOS:As	03/21/94			
0200	Japan	R Japan	9610						GOS:NAm	03/21/94			
0300	USA	VOA	21550	17740	15250	11705	7651U	7205	7115	sAs	03/18/94		
0130													
0227	Netherlands	R Netherlands	12025	9860					sAs	03/08/94			
0140													
0200	Vatican State	Vatican Radio	9650	7335					As/AusNZ	03/22/94			
0200													
0259	Canada	R Canada Int'l	11940	11845	9755	9535	9120		Carib/LAm/NAm	03/18/94			
0250	Germany	R Deutsche Welle	15185	12045	11965	11945	9690	9650	9615	7285	1548	sAs	03/08/94
0800	USA	KWHR	17510						eAs			03/08/94	
0230													
0300	Hungary	R Budapest	15220	11910	9835	5970			NAm	03/08/94			
0327	Netherlands	R Netherlands	12025	9860					sAs	03/08/94			
0245	Pakistan	R Pakistan	21730	17725	17705	15190	7290		s&seAs	03/19/94			
0300	Portugal	R Portugal	11840	9705	9635	9570	9555		SAm/NAm	03/06/94			
0300	Sweden	R Sweden	9850	6040					NAm	02/26/94			
0300													
0350	Germany	R Deutsche Welle	11715	9700	9640	9535	6185	6120	NAm	03/08/94			
0400	Japan	R Japan	17845	17810	15210				GOS:As	03/20/94			
0500	South Africa	Channel Africa	5995	3220					e&cAfr/sAf	03/22/94			
0555	South Africa	Radio Oranje	3230						Domestic	03/22/94			
0350	Turkey	V of Turkey	9445						NAm	03/19/94			
0330													
0427	Netherlands	R Netherlands	9590	6165					wNAm	03/08/94			

SCHEDULES BY SUBSTROM

START	END	COUNTRY	STATION	FREQUENCIES										TARGET AREA	NOTES	LAST Update		
0400	0530	Australia	R Australia	21595	17880	17750	17715	11880	11720							As/Pac/PapNG	#2&4 Eng Sa-Su 04-05	03/09/94
	0429	Canada	R Canada Int'l	15275	11925	11905	9650									ME		03/18/94
	0455	China	China R Int'l	11840	11680											wNam		03/18/94
	0450	Germany	R Deutsche Welle	9765	9565	7225	7150	6185	6015	5980						eSc&Af		03/08/94
	0430	USA	VOA	15205	11965	7200	7170	6873L	6040	6010	5995	792				ME/nAf/Eu		03/18/94
0430	0500	USA	VOA	15205	11965	7200	7170	6873L	6040	6010	5995	3980	792		ME/nAf/Eu		03/18/94	
0450	0700	Swaziland	Trans World Radio	5055											sAf		03/08/94	
0500	0529	Canada	R Canada Int'l	17840	15430	7295	6150	6050								A/ME/Eu	For Peacekeeping For	03/18/94
	0550	Germany	R Deutsche Welle	11705	9670	9515	5960									NAm		03/08/94
	0600	Japan	R Japan	11885	9725	9610										GOS:NAm		03/20/94
	0600	Japan	R Japan	7230	5975											GOS:Eu		03/20/94
	0600	South Africa	Channel Africa	9695	5955											wAf/sAf		03/22/94
	0530	USA	VOA	15205	11965	7200	7170	6873L	6140	6040	5995	3980	792		ME/nAf/Eu		03/18/94	
	0600	USA	WYFR	11580	9870										Eu/Af		03/08/94	
	0520	Vatican State	Vatican Radio	6245	3950	1530									Eu		03/22/94	
0530	0600	Australia	R Australia	21595	17880	17715	17670	11880	11720							As/Pac/PapNG	#2&4 Eng Sa-Su	03/09/94
	0735	Swaziland	Trans World Radio	11740												Cape		03/08/94
	0735	Swaziland	Trans World Radio	7200												sAf		03/08/94
	0600	USA	VOA	15205	11965	7200	7170	6873L	6140	6040	5995	3980			ME/nAf/Eu		03/18/94	
	0600	USA	VOA	1197	792										ME/nAf/Eu		03/18/94	
0600	0630	Australia	R Australia	21595	17880	17715	17670	11880	11720							As/Pac/PapNG		03/09/94
	0630	Australia	R Australia	17795	15240	13605										As/Pac/PapNG		03/09/94
	0650	Germany	R Deutsche Welle	21680	17875	17820	15205	15185	13790	11915						wAf		03/08/94
	0700	Japan	R Japan	21610	11860											GOS:As		03/21/94
	0700	South Africa	Channel Africa	15220	5955											wAf/sAf		03/22/94
	0750	South Africa	Radio Oranje	5965												Domestic		03/22/94
	0630	USA	VOA	15600	12080	12035	11950	9665	9530	7405	6035	1530			Africa		03/18/94	
	0700	USA	VOA	11965	11805	7325	7170	6873L	6140	6060	6040	5995	3980		ME/nAf/Eu		03/18/94	
	0630	USA	VOA	1260	792										ME/nAf/Eu		03/18/94	
	1600	USA	VOA Europe	1197											Eu		exc Su	03/18/94
	0700	USA	WCSN	7535											Eu		03/08/94	
	0800	USA	WSHB/1	7520											UK/wEu		03/08/94	
	0800	USA	WYFR	13695	11770	7355									Eu/Af		03/08/94	
0630	0700	Australia	R Australia	21725	17880	17670	15240	11880	11720							As/Pac/PapNG		03/09/94
	0700	Australia	R Australia	17795	15240	13605	11910	9860	9580							As/Pac/PapNG		03/09/94
	0655	Belgium	R Vlaanderen Int'l	9925	6015											Aus/Eu		03/19/94
	0700	USA	VOA	15600	12080	12035	11950	9665	9530	7405	6035	1530			Africa	Sa-Su	03/18/94	
	0645	Vatican State	Vatican Radio	15210	11740	9645	7250	6245	3950	1530					ME/Eu/WCIS	Mo-Sa	03/22/94	

SCHEDULES BY SUBSTATION

START	End	COUNTRY	STATION	FREQUENCIES						TARGET AREA	NOTES	LAST Update				
0640	0820	Monaco	Trans World Radio	7385						UK	Sa-0835 Su-0845	03/21/94				
0700	0800	Australia	R Australia	21725	17750	17695	15240	11880	11720	As/Pac/PapNG		03/09/94				
	0730	Australia	R Australia	17795	15240	13605	11910	9860	9580	As/Pac/PapNG		03/09/94				
	0800	Japan	R Japan	15270						GOS:Oc		03/20/94				
	0800	Japan	R Japan	7230	5975						GOS:Eu		03/20/94			
	0800	Japan	R Japan	15380						GOS:ME		03/20/94				
0730	0900	Australia	R Australia	11910	9860	9710	9580	6080	6020	As/Pac/PapNG		03/09/94				
	0827	Netherlands	R Netherlands	9720	9630						Pacific		03/17/94			
0735	0805	Swaziland	Trans World Radio	11740	6070						sAI/Cape	Mo-Fr	03/08/94			
0745	0915	Guam	KTWR	15200						FE		03/08/94				
0755	1425	South Africa	Radio Oranje	7270						Domestic		03/22/94				
0759	1205	New Zealand	R New Zealand Int'l	9700						Pacific		03/05/94				
0800	0900	Australia	R Australia	21725	17750	17695	15240	11720	7240	As/Pac/PapNG		03/09/94				
	1600	USA	KWHR	9930						China		03/08/94				
0830	0927	Netherlands	R Netherlands	9720						Pacific		03/17/94				
	0927	Netherlands	R Netherlands	9895	5955						Eu		03/08/94			
0845	1000	Guam	KTWR	11805						sPac		03/08/94				
0900	1000	Australia	R Australia	21725	15170	13605	9580	9510	6080	As/Pac/PapNG		03/09/94				
	0925	Belgium	R Viaanderen Int'l	17590	13690	6035						AI/Eu	M-Sa	03/19/94		
	0950	Germany	R Deutsche Welle	21680	17780	17715	15435	12055	11715	6160	As/Pac		03/08/94			
	1000	Japan	R Japan	15190	11815	9750						GOS:As		03/21/94		
	1000	Japan	R Japan	15270						Reg Svc:Oc		03/20/94				
	0930	Palau	KHBN	17630						As	Mo-Fr	03/08/94				
0930	1027	Netherlands	R Netherlands	15470	12065	9720	9715						FE & Pacific		03/17/94	
	1027	Netherlands	R Netherlands	9895	5955						Eu		03/08/94			
1000	1100	Australia	R Australia	21725	15170	9580						As/Pac/PapNG		03/09/94		
	1100	South Africa	Channel Africa	17810						eAI		03/22/94				
1020	1030	Vatican State	Vatican Radio	21655	15210	11740	6245	1530						neAI/ME/Eu	Mo-Sa	03/22/94
1030	1127	Netherlands	R Netherlands	15470	12065						FE		03/08/94			
	1059	South Korea	R Korea	11715						eNAI		03/18/94				

SCHEDULES BY SURDSTROM

START	END	COUNTRY	STATION	FREQUENCIES							TARGET AREA	NOTES	LAST UPDATE
1100	1200	Australia	R Australia	15565	15170	13605	9860	9580	9510	As/Pac/PapNG		03/09/94	
	1150	Germany	R Deutsche Welle	21600	17860	17800	17765	15410	15370	wA/		03/08/94	
	1200	Japan	R Japan	15295	9610					GOS:As		03/21/94	
	1200	South Africa	Channel Africa	9730						sA/		03/22/94	
	1130	Switzerland	Int'l Red Cross	6165						Eu	last Su/mo	03/11/94	
	1200	USA	WYFR	11830	5950					NAm	Network M-Sa	03/08/94	
1130	1200	Sweden	R Sweden	15240	15120	13775				As/Pac		03/20/94	
1200	1300	Australia	R Australia	15565	11800	7240	6080	6020	5995	As/Pac/PapNG		03/09/94	
	1229	Canada	R Canada Int'l	17820	11855	9635				Canb/NAm	Mo-Fr	03/18/94	
	1300	France	R France Int'l	21645	15530					NAm/CAm/SAm		03/06/94	
	1400	Palau	KHBN	9965						As	Sa - 1430	03/08/94	
	1255	Poland	Polish Radio Warsaw	11815	9525	7270	7145	6135		Eu		03/18/94	
	1300	USA	WYFR	17750	11830	6015	5950			NAm	#1&2&4 Network M-Sa	03/08/94	
1207	1258	New Zealand	R New Zealand Int'l	9700						Pac	occasional use	03/05/94	
1230	1255	Belgium	R Vlaanderen Int'l	17775	15545					seAs/NAm	Su	03/19/94	
	1259	Canada	R Canada Int'l	15195	9660					As		03/18/94	
	1300	Sweden	R Sweden	17870	15240					NAm		03/16/94	
	1300	Turkey	V of Turkey	9675						swAs		03/19/94	
	1330	USA	VOA	15425	15160	11805	11715	9760	6110	eAs/seAs/Pac		03/18/94	
1259	1649	New Zealand	R New Zealand Int'l	9655						Pac	occasional use	03/05/94	
1300	1430	Australia	R Australia	13755	11800	7240	5995			As/Pac/PapNG		03/09/94	
	1325	Belgium	R Vlaanderen Int'l	17775	15545					seAs/NAm	M-Sa	03/19/94	
	1559	Canada	R Canada Int'l	17820	11955					Canb/NAm	Su	03/18/94	
	1400	Russia	R Moscow Int'l	17880	17780	17760				World Service	17m	03/05/94	
	1400	Russia	R Moscow Int'l	15540	15495	15480	15470	15455	15380	World Service	19m	03/05/94	
	1400	Russia	R Moscow Int'l	12065	12030	11980				World Service	25m	03/05/94	
	1400	USA	WYFR	17750	13695	11830	6015	5950		NAm	#1&2&5 Network M-Sa	03/08/94	
1330	1359	Canada	R Canada Int'l	21455	17895	17820	15325	15315		Eu/ME/IA/		03/18/94	
	1357	Canada	R Canada Int'l	11795	9535					eAs		03/18/94	
	1427	Netherlands	R Netherlands	15150	13700	9890				sAs		03/08/94	
1345	1405	Vatican State	Vatican Radio	17525	15090	11640				As/AusNZ		03/22/94	
1400	1500	Japan	R Japan	11915	11840	9750				GOS:As		03/20/94	
	1500	USA	VOA	15255	1548					ME		03/18/94	
	1430	USA	VOA	15395	9760	9645	7125	6110		sAs		03/18/94	
	1500	USA	WYFR	17750	11830	6015				NAm	#1&2 Network M-Sa	03/08/94	

SCHEDULES BY SUNDSTROM

START END	COUNTRY	STATION	FREQUENCIES										TARGET AREA	NOTES	LAST Update
1430			11800	11695	11660	9770	9710	7260	7240	6080	6060	5995	As/Pac/PapNG		03/09/94
1630	Australia	R Australia	15150	13700	9890								sAs		03/08/94
1527	Netherlands	R Netherlands	17720	15335	11810								As		03/21/94
1455	Romania	R Romania Int'l	3230										Domestic		03/22/94
2200	South Africa	Radio Oranje	15425	15160	9760	9645	7215	6110	1143				eAs/seAs/Pac		03/18/94
1500	USA	VOA	15395	9760	9645	7125	7125	6110					sAs		03/18/94
1500															
1550	Germany	R Deutsche Welle	21600	9735	7185	7185							s&c&eAI/ME		03/08/94
1615	Guam	KTWR	12025										sAs	We-Sa -1630 Su -1700	03/08/94
1600	Japan	R Japan	11915	9750									GOS:As		03/20/94
1530	Palau	KHBN	9830										As		03/08/94
1555	Poland	Polish Radio Warsaw	9525	7285									Eu		03/18/94
1800	South Africa	Channel Africa	11770	4945									e&w&cAI/sAI		03/22/94
1600	USA	VOA	19379L	15255	15205	9700	1548	1260					ME/nAI/Eu		03/18/94
1530	USA	VOA	15395	15205	9760	9645	7215	7125	6110				sAs	#1&2 Network M-Sa	03/18/94
1700	USA	WYFR	17750	11830	11705								NAm		03/08/94
1530															
1627	Netherlands	R Netherlands	15150	13700	9890								sAs		03/08/94
1627	Netherlands	R Netherlands	5955										Eu		03/17/94
1600	USA	VOA	15395	15205	9760	9645	7215	7125	6110				sAs		03/18/94
1600															
1650	Germany	R Deutsche Welle	21680	17810	15595	9875	7225	6170	1548				sAs		03/08/94
1630	Pakistan	R Pakistan	17660	15675	15555	13590	11570	9470					e&seAI/ME	Slow-speed news 1615	03/19/94
1630	USA	VOA	17895	17785	15445	15410	15225	13710	12040	1530			Africa	Sa-Su	03/18/94
1630	USA	VOA	19379L	15255	15205	9700	1548	792					ME/nAI/Eu		03/18/94
1700	USA	VOA	15395	15205	9760	9645	7125	6110					sAs		03/18/94
1700	USA	VOA Eurooe	1197										Eu		03/18/94
1620	Vatican State	Vatican Radio	15090	11640									AI	Sa Mass	03/22/94
1615															
1645	Sweden	R Sweden	6065	1197									Eu		03/16/94
1630	Vatican State	Vatican Radio	9645	7250	6245								ME/eAI/WEu		03/22/94
1630															
1800	Australia	R Australia	11880	11695	11660	9860	9580	7260	7240	6080	6080	6060	As/Pac/PapNG		03/09/94
1657	Canada	R Canada Int'l	9550	7150									India		03/18/94
1700	USA	VOA	17895	17785	15445	15410	15225	13710	12040	1530			Africa		03/18/94
1700	USA	VOA	19379L	17735	15255	15245	15205	9700	6040	1548			ME/nAI/Eu		03/18/94
1650															
1850	New Zealand	R New Zealand Int'l	7125										Pacific	Mo-Fr all 6100 if	02/15/94
1700															
1800	Japan	R Japan	9580	6150									GOS:As		03/20/94
1800	Japan	R Japan	11930										GOS:ME/nAI		03/20/94
1755	Poland	Polish Radio Warsaw	9525	7285	7270								Eu		03/18/94
1715	Swaziland	Trans World Radio	7120										cAI		03/08/94
1730	Switzerland	Int'l Red Cross	6165										Eu	Mo after last Su/mo	03/11/94
1730	USA	VOA	17895	17785	15445	15410	13710	12040	1530				Africa		03/18/94

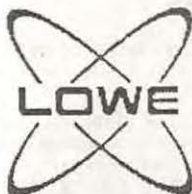
START	End	COUNTRY	STATION	FREQUENCIES							TARGET AREA	NOTES	Last Update			
1700	1800	USA	VOA	19379L	15255	15205	9760	9700	6040		ME/nAf/Eu		03/18/94			
	1800	USA	VOA	15395	9645	7215	7125	6110			sAs		03/18/94			
1715	1730	Swaziland	Trans World Radio	7120							cAf	Mo-Sa	03/09/94			
1730	1827	Netherlands	R Netherlands	21590	17655	7120	6020				s&e&wAf		03/08/94			
	1800	Sweden	R Sweden	15390	9655	6065	1179				ME/nAf/Eu		03/16/94			
	1800	USA	VOA	17895	17785	15445	15410	13710	12040	621	Africa		03/18/94			
	1800	Vatican State	Vatican Radio	15090	11625	9695					e&sAf		03/22/94			
1800	1900	Australia	R Australia	11880	11695	11660	9860	9580	7260	7240	6080	6080	6060	As/Pac/PapNG		03/09/94
	1825	Belgium	R Vlaanderen Int'l	15550	5910									At/Eu		03/19/94
	2100	Kuwait	R Kuwait	11990										Eu		03/05/94
	1900	USA	VOA	17895	17800	15580	15445	13710	12040	7415	621			Africa		03/18/94
	1900	USA	VOA	19379L	15205	9770	9760	6040	3980	1197				ME/nAf/Eu		03/18/94
1830	1927	Netherlands	R Netherlands	21590	17655	7120	6020							s&e&wAf		03/08/94
1851	2138	New Zealand	R New Zealand Int'l	11735										Pacific		03/05/94
1900	2100	Australia	R Australia	11720	11660	7260	7240	6150						As/Pac/PapNG		03/09/94
	2100	Australia	R Australia	11880	11695	9860	9580	6080	6060					As/Pac/PapNG	#2 - 2030	03/09/94
	1950	Germany	R Deutsche Welle	15350	13790	13690	11810	11785	11740	9735	9640			wAf/ME		03/08/94
	1930	Hungary	R Budapest	11910	9835	7220	6110							Eu		03/08/94
	2000	Japan	R Japan	9580	6150									GOS:As		03/21/94
	2000	Japan	R Japan	9610	7140									GOS:Oc		03/21/94
	2000	USA	VOA	17800	15580	15445	15410	13710	12040	7415	621			Africa		03/18/94
	2000	USA	VOA	19379L	15205	9770	9760	6040	3980					ME/nAf/Eu		03/18/94
1930	2030	Iran	V of Islamic Rep of Iran	9745	9022									Eu/nAf		03/18/94
	2027	Netherlands	R Netherlands	17655	17605									wAf		03/08/94
	2025	Poland	Polish Radio Warsaw	9525	7285	6135	1503							Eu		03/18/94
1950	2010	Vatican State	Vatican Radio	5882	3950	1530								Eu		03/22/94
2000	2050	Germany	R Deutsche Welle	9615	7285									Eu		03/08/94
	2030	Portugal	R Portugal	9815	9780									Eu	Mo-Fr	02/26/94
	2050	Turkey	V of Turkey	9900										Eu		03/19/94
	2200	USA	KWHR	15405										Japan		03/08/94
	2030	USA	VOA	21485	17800	15580	15445	15410	15160	13710	11820	7415		Africa		03/18/94
	2030	USA	VOA	1530	621									Africa		03/18/94
	2100	USA	VOA	19379L	15205	9770	9760	6040	3980					ME/nAf/Eu		03/18/94
	2200	USA	WYFR	21615	21525	17613	15566	15355						Eu/Af	#4 or #5, not both	03/08/94
2030	2059	Canada	R Canada Int'l	17875	17855	17820	15325	13670	13650	7235	5995			At/ME/Eu		03/18/94

SCHEDULES BY SUNDSTROM

START	End	COUNTRY	STATION	FREQUENCIES							TARGET AREA	NOTES	LAST Update		
2030	2100	Sweden	R Sweden	9655	6065	1179						Eu/Al/ME		03/16/94	
	2130	USA	VOA	21485	17800	15580	15445	15410	13710	7415	1530	621	Africa		03/18/94
2100	2130	Australia	R Australia	11880	11855	11720	9645	6080	6060				As/Pac/PapNG		03/09/94
	2125	Belgium	R Vlaanderen Int'l	5910									Eu		03/19/94
	2150	Germany	R Deutsche Welle	15435	13690	11785	9765	9670					As/Pac		03/08/94
	2150	Germany	R Deutsche Welle	15350	15135	9735							wAl		03/08/94
	2130	Hungary	R Budapest	11910	9835	7220	6110						Eu		03/08/94
	2200	Japan	R Japan	9750	9625	6185	6035						GOS:As		03/20/94
	2200	Japan	R Japan	9610									GOS:Oc		03/20/94
	2115	Japan	R Japan	11915	9600								Reg Svc:seAs		03/20/94
	2230	Palau	KHBN	9965									As		03/08/94
	2200	USA	VOA	19379L	15205	9760	9535	6095	6040	3980	1260		ME/nAl/Eu		03/18/94
	2300	USA	WHRI	13760	9485								CaribLeNAm/Eu		03/08/94
2130	2200	Australia	R Australia	17795	13755	11880	11855	11720	9645				As/Pac/PapNG		03/09/94
	2200	Moldova	R Dnestr Int'l	9620	999								Eu	Mo, We, Sa w/repeat	03/09/94
	2200	Sweden	R Sweden	6065	1179								Eu/Al/ME		03/16/94
	2200	USA	VOA	21485	17800	15580	15445	15410	13710	7415	1530	621	Africa	Su-Fr	03/18/94
2139	0758	New Zealand	R New Zealand Int'l	15115									Pacific		03/05/94
2200	2300	Australia	R Australia	17860	17795	15365	13755	11880	11855	11720	11695	9645	As/Pac/PapNG		03/09/94
	2229	Canada	R Canada Int'l	15305	13670	11875	11845	9755	5960				CaribLAm/NAM		03/18/94
	2229	Canada	R Canada Int'l	11705									seAs		03/18/94
	2250	Turkey	V of Turkey	11710	9445	7185							Eu/NAM/ME		03/19/94
	2400	USA	KWHR	17645									Japan		03/08/94
	2300	USA	VOA	17820	17735	15305	15290	15185	11760	9770	7215	7105	eAs/seAs/Pac		03/18/94
	2230	USA	VOA	1548									ME		03/18/94
	2300	USA	WYFR	21525	17613								Eu/Al		03/08/94
2215	2315	Guam	KTWR	15485									FE	Sa-Su	03/08/94
2230	2259	Canada	R Canada Int'l	13670	9755	5960							CaribLAm/NAM		03/18/94
	0100	Palau	KHBN	9830									As		03/08/94
	2300	Sweden	R Sweden	6065	1179								Eu		03/16/94
	2300	USA	VOA	1548	1260								ME		03/18/94
2245	2300	USA	VOA	15155	11730	9670							American Republics	Mo-Fr OAS	03/18/94
2300	2400	Australia	R Australia	17860	17795	15365	13755	11880	11855	11720	11695		As/Pac/PapNG		03/09/94
	2359	Canada	R Canada Int'l	15235	13670	11940	9755	5960					CaribLAm/NAM	Sa-Su	03/18/94
	2400	Japan	R Japan	9625	6185								GOS:As		03/21/94
	2400	Japan	R Japan	9610									GOS:Oc		03/21/94
	2400	Japan	R Japan	6125	5975								GOS:Eu		03/21/94
2300	2400	USA	WHRI	9495	7315								eNAM/Eu/Carib	separate pgm Tu-Fr	03/08/94
2330	2355	Belgium	R Vlaanderen Int'l	13655	11740								SAm/NAM		03/19/94
	0027	Netherlands	R Netherlands	6165	6020								eNAM		03/08/94
	2400	Sweden	R Sweden	11910									As/Pac		03/20/94

Press Release

For Release: March 11, 1994
For Information Contact:



John Wilson, Managing Director
Lowe Electronics Production
The Arkwright Workshop
Cromford Mill, Cromford
Derbyshire, DE4 3RQ, UK

Tel. 044 629 826287
Fax 044 629 826263

Thomas R. Sundstrom
TRS Consultants
PO Box 2275
Vincentown, NJ 08088-2275, USA

Tel. 1 609 859 2447
Fax: 1 609 859 3226
Internet:
2446376@mcimail.com

We are pleased to announce three new software products for the award winning Lowe HF-150 communications receiver. In a joint venture between John Wilson of Lowe and Tom Sundstrom of TRS Consultants, the new software offers a variety of approaches to computerized receiver control. The software products are now available for immediate delivery.

HF-150

Push button control
within Microsoft®
Windows™

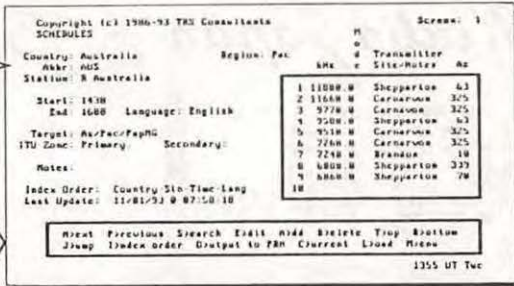
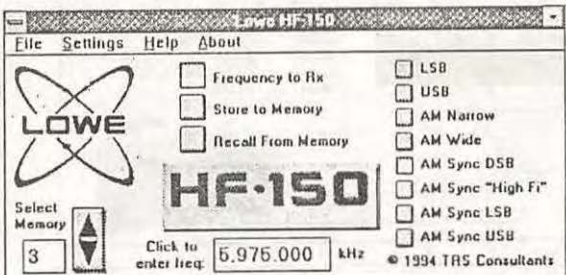
SCHEDULES v 3.02
adds HF-150 receiver
control. Send data to the
VFO or load the memories.

"Most Innovative Receiver
Designer 1992"

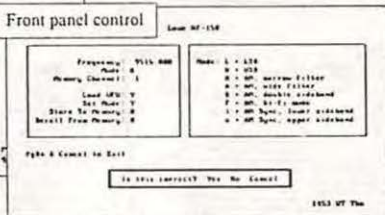


Industry
Awards

"Best Computer Accessory
1988: Shortwave Database"



Memory Management



- Prepare and edit "lists" of frequencies.
- Load up to 60 memories.
- Scan frequency range or memories.
- Capture data upon stopping scan.

Literature on the Lowe HF-150 receiver may be obtained from authorized dealers including, in the USA, Electronic Equipment Bank and Universal Radio. A software catalog may be obtained from TRS Consultants at the postal or electronic mail address above. Include your postal mailing address in your request.



PC Software by W2XQ

the page

COMMITTEE TO PRESERVE RADIO VERIFICATIONS

JERRY BERG, Chairperson • 38 Eastern Ave. • Lexington, MA 02173 • (617) 861-8481

• THE NATION'S STATION •

THE CROSBY RADIO CORPORATION



CINCINNATI

March 13, 1939

Mr. Norman L. Maguire
211 Richard's House
Lehigh University
Bethlehem, Pennsylvania

Dear Short Wave Listener:

We are pleased to verify your reception report of February 28, 1939 of our short wave station W8XAL. This station operates on the assigned frequency of 6060 kilocycles (49.5 meters), with a power of 10,000 watts, as authorized by the Federal Communications Commission.

The present operating schedule of W8XAL is as follows:

EASTERN STANDARD TIME

Sundays	8:00 A.M. to 7:30 P.M.	11 to 11:30 P.M.	1 to 2 A.M.
Mondays	5:45 A.M. to 12 Midnight		1 to 2 A.M.
Tuesdays	5:45 A.M. to 7:30 P.M.	11 to 12 Mid.	1 to 2 A.M.
Wednesdays	5:45 A.M. to 7:30 P.M.	11 to 11:30 P.M.	1 to 2 A.M.
Thursdays	5:45 A.M. to 12 Midnight		1 to 2 A.M.
Fridays	5:45 A.M. to 7:30 P.M.	11 to 11:30 P.M.	1 to 2 A.M.
Saturdays	5:45 A.M. to 11:00 P.M.		

The major portion of the programs for Station W8XAL are relayed from Stations WLW and WSAI. Some programs, however, are produced especially for W8XAL in the interest of short wave listeners throughout the World.

We thank you for your interest in writing to us and trust that you will continue to enjoy reception from our Stations WLW and W8XAL.

Yours very truly,

STATIONS WLW - WSAI - W8XAL

R. J. Rockwell
Technical Supervisor

RJR:ET

Located just down the road from the present VOA-Bethany station, W8XAL began foreign language programming in 1938. Later known as WLW0, and with power increased to 75 kw. in 1941, it became part of the VOA network in 1942.

A Committee of the Association of North American Radio Clubs

North American Shortwave Association
45 Wildflower Road
Levittown, Pennsylvania 19057

First Class Mail
U.S. Postage
PAID
Levittown, PA
Permit No. 319

FIRST CLASS MAIL



The Journal of the
North American Shortwave Association

ISSN 0160-1989

Executive Director: Bob Brown, KW3F
238 Cricklewood Circle, Lansdale, PA 19446
Publisher: Bill Oliver, 45 Wildflower Road,
Levittown, PA 19057
Executive Council: Jerry Berg, Bob Brown,
Dr. Harold Cones, Gerry Dexter, Glenn Hauser,
Don Jensen, Bill Oliver

EDITORIAL STAFF

Managing Editor: Bob Brown, KW3F
238 Cricklewood Circle, Lansdale, PA 19446
DXer's Forum: Send All Inputs to - 238 Cricklewood
Circle, Lansdale, PA 19446
Easy Listening: Richard Cuff, 213 Parkview Ave.,
Allentown, PA 18104-5323
NASWA Portraits: Jerry Klinck, 43 Lein Road,
West Seneca, NY 14224
Listener's Notebook: Hans Johnson, 7529 Red
Cravat Court, Columbia, MD 21046
Technical Topics: Joe Buch, N2JB, 2008 Mozart
Circle, Virginia Beach, VA 23454
QSL Report: Sam Barto, 47 Prospect Place, Bristol,
CT 06010
Distributing Editor: Vernon Hyson, 5410 Camp
Stewart Rd., Charlotte, NC 28215
Tropical Band Loggings: Sheryl Paszkiewicz, 1015
Green Street, Manitowoc, WI 54220
International Band Loggings: Wallace C. Treibel,
357 N.E. 149th St., Seattle, WA 98155
Scoreboard: Jerry Lineback, 6943 Parkway Dr.,
Douglasville, GA 30135

NASWA Awards: Dr. Harold Cones, 2 Whits Court,
Newport News, VA 23606
English Schedules: Tom Sundstrom, W2XQ
P.O. Box 2275, Vincentown, NJ 08088-2275
Listener's Library: Skip Arey, WB2GHA
P.O. Box 644, Waterford Works, NJ 08089
Destinations: Mitch Sams, 779 Galilea Court, Blue
Springs, MO 64014; Don Moore, 11434 140th St.,
Davenport, IA 52804-9538; Bill Kurrasch, 5607
Lincoln Rd., Ontario, NY 14519
Equipment Reviews: Alan Johnson, N4LUS
6001 Goldsboro Rd., Bethesda, MD 20817
Radio Stamps: Neil Carleton, P.O. Box 1644,
Almonte, Ontario K0A 1A0, Canada
The Company Store: NASWA, 45 Wildflower Rd.,
Levittown, PA 19057
MEMBERSHIP FEES:
North America (First Class Mail) \$25.00
Overseas (Air Mail):
Central America, Caribbean, Venezuela
& Columbia \$29.00
South America and Europe \$29.00
Asia, Africa and Pacific \$32.00

All remittances must be in U.S. funds and mailed to:

NASWA
45 Wildflower Road
Levittown, PA 19057
U.S.A.

