

# FRENDX

## PAPUA NEW GUINEA

L.T: UTC + 10h — Pop: 3.642.928 — Radio sets: 229.504 —  
 Pr.L: English, Melanesian, Pidgin, Hin Motu + 30 Vernacular  
 languages — E.C: a/c 50, 240/415V (no) — ITU: PNG — IDD:  
 675.

15) — 6020 10 N NBC  
 17) — 6040  
 14)

### NATIONAL BROADCAST PAPUA NEW GUINEA

ADDR: P.O. Box 1359, Boroko  
 Natbroadcast Telex: NE 22112,  
 L.P: Chmn: K. K. Uru. Dir.Tec: D  
 Dir. Staff Development & Training  
 Affairs: M. Pendala. Dir. Finance:  
 B. Arua.  
 STATIONS: N = Karai Sce (Nat.)  
 (Provincial).



**NATIONAL  
 BROADCASTING  
 COMMISSION OF PAPUA NEW GUINEA**

Telex:  
 NE82701

Call	kHz	kW	St/Time
1) —	585	2.5 N	Port Mo
1) —	675	2 N	Lae*
1) —	675	2 N	Wewak

Phone:

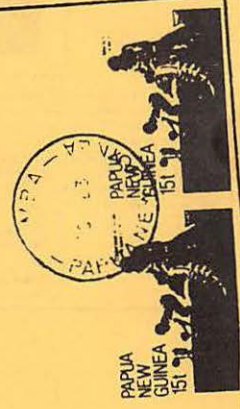
Cables:  
 Natbroadcast

### NATIONAL BROADCASTING COMMISSION PAPUA NEW GUINEA



ur reception report of  
 in confirming that yo  
 ified correct.  
 n your future listeni

15) —	3325	10 P	R
16) —	3335	10/5 P	R
7) —	3345	2 P	R
3) —	3355	10/2 P	R
17) —	3365	10 P	R
6) —	3375	10.2 P	R
18) —	3385	10 P	R
4) —	3395	2 P	R
5) —	3905	2 P	R
1) P2K3	3925	10 N	Port
1) P2K4	4890	10 N	Port
1) P2T4	4890	10 N	Port
6) —	5965	10.2 N	NBC
18) —	5985	10 N	NBC



## Sangean ATS-803A



The new Sangean ATS-803A lets you hear it all: longwave, medium wave, FM and the entire shortwave spectrum. Five tuning functions offer exceptional versatility: manual tuning knob, keypad entry, auto scanning, manual scanning and memory recall. The large LCD digital display provides readout accuracy to 1 KHz. Finding your favorite station couldn't be easier! Nine memories are provided to store stations of your choice. Five other memories retain the last station tuned on five bands (LW, MW, FM, SW and AM). A BFO knob is provided for SSB/CW reception. A dial lock and dial light are provided. This radio offers exceptional fidelity because of its large 4" speaker and use of both Bass and Treble controls. FM Stereo reception is featured through the headphone jack. An RF control insures maximum sensitivity without overload. A built-in 24 hour LCD clock can turn the radio on at any preset time. Jacks are provided for external antenna, stereo headphones, tape recorder and external power. An AC adapter is included at no extra cost. Requires two AA batteries for clock/memories and six D cells for portable operation. This newly improved model features a Wide-Narrow selectivity switch. Covered by the new Sangean America six month factory limited warranty.

### SPECIFICATIONS

Dimensions ..... 11 3/8" x 6 1/4" x 2 1/8"  
 Weight ..... 4 Lbs. (6 Lbs. ship)  
 Frequency Range .... 150 - 29999 KHz  
 87.5 - 108 MHz FM  
 Power ..... 120 VAC 60 Hz or 4.5DC

ATS-803A List Price ..... \$239.95  
 ATS-803A Discount Price  
 Order #3068 ..... \$189.95  
 Shipping/Handling/Insurance ..... \$5.00

## Sangean SG-789



Great performance in small package! AM and FM are provided with FM stereo to the headphone jack. Eight major shortwave bands are covered: 2.3-5.2, 5.8-6.25, 7.5-7.55, 9.45-9.9, 11.6-12.05, 15.0-15.6, 17.45-18.10 and 21.45-21.95 MHz. Includes 3" built-in speaker and LED tune light and FM stereo LED. With carrying case and strap. Six month limited warranty. Requires just three AA cells or 4.5 VDC adapter (both optional).

SG-789 List Price ..... \$74.95  
 SG-789 Discount Price  
 Order #1006 ..... \$64.95  
 Shipping/Handling/Insurance ..... \$4.00

## Sangean SG-702



Here is an economy analog portable that couples good SW frequency coverage with MW and FM stereo reception (stereo only through headphone jack). Shortwave coverage is divided into two bands: 2.3-6.2 MHz and 5.8-15.6 MHz. Includes LED tuning and stereo indicators, stereo-mono switch, carry strap and six month limited warranty. Requires just four AA cells or 6VDC adapter (both optional).

SG-702 List Price ..... \$39.95  
 SG-702 Discount Price  
 Order #1080 ..... \$35.95  
 Shipping/Handling/Insurance ..... \$4.00

## Sangean SG-792



If you are DXing for Tristan da Cunha, this is not the radio for you. But wouldn't it be nice to have a compact shortwave radio with you when you travel? While you may not hear exotic DX on this model, you will enjoy solid reception from the major SW broadcast stations. The nine band analog SG-792 covers MW 522-1620 KHz, FM 87.5-108 MHz and the major international SW bands: 2.3-5.2, 5.85-6.2, 7.1-7.5, 9.45-9.9, 11.45-11.98, 15.1-15.5 and 17.45-18.06 MHz. With LED tuning indicator, carry strap, and six month limited warranty. Requires just two AA cells or 3VDC adapter (both optional).

SG-792 List Price ..... \$49.95  
 SG-792 Discount Price  
 Order #1651 ..... \$44.95  
 Shipping/Handling/Insurance ..... \$4.00

## HUGE SHORTWAVE CATALOG AVAILABLE

- Communications Rcvrs.
- Portable Receivers
- Tuners and Preamps
- Audio Filters
- Headphones
- Radioteletype Equipment
- Facsimile Equipment
- VHF-UHF Receivers
- Shortwave Antennas
- Books & Accessories

## Universal Shortwave Radio

1280 Aida Drive Dept. FREN  
 Reynoldsburg, Ohio 43068 U.S.A.  
 Ohio: 614 866-4267 Toll Free: 800 431-3939

- In business since 1942!
- Visa, MC, Discover
- We ship worldwide
- Prices & specs. are subject to change.
- Used equip. list available

### STORE HOURS

Monday - Friday 10:00-5:30  
 Except Thursday 10:00-8:00  
 Saturday 10:00-3:00  
 Sunday -CLOSED-

# DX'ers Forum

Dedicated to Furthering  
the Art, Science and  
Enjoyment of DX'ing

Conducted by Rowland Archer, 5524 Hawthorne Park, Raleigh, NC 27613 February, 1989

With February's arrival I always feel a sense of urgency to enjoy the last couple of months of low-QRN tropical band DXing. Only a short time ago it seemed like the DX season stretched out ahead of us forever; now it's going by all too fast. On the bright side, we can still look forward to the late Winter / early Spring openings to Indonesia and Papua New Guinea. Last year from mid-February through early May we enjoyed a number of exciting mornings on 90, 75, and 60 meters, hopping from one Indo-channel carrier to another, even finding some audio from time to time, hil

Once you've heard and ID'd those Indonesians, you'll have a much better chance of QSL'ing them if you send now for a copy of Steve Reinstein's excellent publication *Kontak Pendengar*. Steve just released the second edition, which is 10 letter-size pages filled with information scoured from eleven premier DX publications over the period from January 1986 to December 1988. Steve has compiled station addresses and actual verie signers (with the year of the source included) for 78 Indonesian stations, including 48 RRI's, 20 non-RRI's, and 10 utilities. You can get a copy for \$3 US in the US and Canada, or \$4 US or 6 IRC's for airmail delivery anywhere else in the world. Steve's address is:

Steve Reinstein  
10291 Cypress Court  
Pembroke Pines, FL 33026  
USA

I keep emphasizing the enjoyment that comes from meeting with other DXers, because I have found the hobby to be a lot more fun when it is shared with others. You have another opportunity to meet with fellow radio enthusiasts this month. Bob Brown, KW3F has put together the second annual Winter SWL Fest, to be held February 25-26 at the Holiday Inn in Kulpville, PA. Complete information was on page 56 of last month's FRENEX. Other obligations prevent me from attending this year, but I went last year and heartily recommend it for a good weekend of radio talk, fun, and education.

Last September we reported on the welcome return of Roger Legge's UHN, the USSR High Frequency Broadcast Newsletter. Since then, the second issue has come out and Roger has instituted a small price increase from what we stated in September. The new price is \$4 US for North America, and \$5 US for anywhere else. It's still the best deal in town for DXers who want to log and verify the Soviets. You can order UHN from Roger at this address:

Roger Legge  
Box 214A  
Etlan, VA 22719  
USA

A superb publication has gotten even better in its 1989 edition. I'm talking about Fine Tuning's *DXer's Guide to Latin America*. I received my copy recently and it has earned a choice spot near the receiver. It starts with a list of Latin American (Central and South American) stations by frequency, giving the country, station name, city, and broadcast schedule (although of course for many Latin stations the schedule is only loosely followed). The next listing is by country, and a comment section is added giving information such as verie signers and parallel frequencies for about 1/3 to 1/2 of the entries. Jerry Berg follows with two pages of dandy classic LAM QSL's from the Committee to Preserve Radio Verifications' collection. Don Moore contributed a thought-provoking article on *The Future for Shortwave Broadcasting in Central America*, and two great reference articles. The first is *Peruvian Provincial Maps for the DXer*, including five pages of maps showing virtually every town in Peru known to have a radio station. The second is called *The Thank You Lab*, and it's something I've wanted for a long time. It's a collection of Spanish and Portuguese words, phrases and sentences that you can use to construct a thank you letter to send to a station after it answers your reception report. The Thank You Lab complements Gerry Dexter's excellent *Language Labs*, which are the best aid I've seen for constructing foreign language reception reports.

You can purchase the *DXer's Guide to Latin America* for \$5 US in North America, or \$8 US for airmail delivery overseas. The address to order from is:

The above just happens to also be the address of our Silk Road version of Indiana Jones, Dr. John Bryant, who handles the special publications detail for Fine Tuning when he's not writing for DX clubs or teaching architecture at Oklahoma State University in Stillwater (you do still find time to teach occasionally, right John!). The final installment ("for the time being," says John) of the Silk Road saga occupies the feature spot in this month's Forum. If you decide to order the DXer's Guide to Latin America, why not give John some feedback on the great job he's done with this series at the same time?

## DXing the Great Silk Road

### PART III

by John Bryant

From Xian, Shaanxi Province, China:

Dear Aunt Mabel and Uncle Rowland:

We are here in Xian now, 'tho I was very sure that we weren't going to make it. We have been here for several weeks and have about recovered from the ordeal. Xian (SEE-ON or SHE-ON) was the original capital of Imperial China, and has been the capital through most of China's long history. It was the eastern terminus of The Great Silk Road. We have seen most of the ancient sites now, done a bunch of radio monitoring for Uncle Rowland and can now catch up on correspondence. If you remember the last time I wrote, we had just gotten rid of our driver Mario and his sheep (yech!!!) out in Urumqi after that awful drive across the first half of the Taklimakan Desert and after Mario almost killed us all with his wild driving across the Tien Shan (Heavenly Mountains). Here is the rest of our travel journal:

At the station in Urumqi, we chose "soft" class tickets for the three-day run through the Jade Gate into China proper and on into Xian. We boarded a beautiful twenty-car train pulled by a giant black, red and brass steam locomotive. Having more coal than most other countries, China has the last major steam-based locomotive rail system in the world. The interior of our car was all brass, polished wood and (sigh) velvet seats. We could not believe it, but there were actually lace antimacassar doilies on the velvet chair backs. This is the Peoples Republic of China??? So much for Mario, his sheep and his Mercedes truck!

We puffed out of Urumqi heading on a 700 mile trip down the Silk Road...our last but worst desert stretch...to Yumen Yuan and then another 700 mountainous miles to Lanzhou and the beginnings of civilization. Our first day was across alternating stretches of salt flats and sand dunes. Around 2:00 PM the sky started turning grey/yellow/brown. Sandstorm! After another hour, the train ground to a halt. Oh me! As the hours stretched out and dust filtered into the car, we pictured what our obituary

back in "the world" would say. Would NASWA print it? The "tea lady" in her Xinjiang Railway uniform was reassuring and said, "This sandstorm business happens all the time out here." Right, lady! The next morning, the air was clear and we were part of a new sand dune. The engineer came through at lunch time and told us that he was in radio contact with both Urumqi and Lanzhou. Thank you, Mr. Marconi! The radio said that we and 47 other trains were stuck and that 600 kilometers of the Silk Road was shut down.

That evening, we dug out the 2010, stuck the whip out the window and tried for Xining, about 500 miles southeast of us. Xining (CEE-NING), capital of the Qinghai (CHING-HIGH) Autonomous Region is almost as remote as Urumqi, though more "Chinese." It is an old caravan stop on the most southerly of the Silk Road routes, and is China's gateway to Tibet. We got Qinghai PBS on 6500 kHz, just where we hear it in the States and at about the same time, too (1100 to 1400 UTC in Tibetan).

Late on the second day, several hundred soldiers of the People's Liberation Army appeared around the train with shovels. Now you know what they do to you in the Chinese Army when you mess up BADLY! Thanks to the army, we and the other 47 trains were out and on our way only three days behind schedule.

We had originally intended to go straight through to Xian, but the stranded trains had thrown everything off schedule so we got a tour of NW China courtesy of the Xinjiang Railway Company. We stopped in the little rail junction of Anxi. The railway provided some army trucks for those of us who wanted to see the fabled ancient Buddhist caves at Dunhuang. We rode for two hours (very cold!) to the caves and, Aunt Mabel, you wouldn't believe it! There are over 3000 man-made caves, most covered with fresco paintings. Those paintings recorded the scenery and people of ancient China and central Asia very accurately for over 1000 years. What we know of the dress, the military weaponry and the daily life of ancient China is due in large measure to 50 generations of Chinese Buddhist monk artists living in the monasteries at remote, desolate Dunhuang!

After an afternoon at the caves, we had a pell mell truck ride back to Anxi to catch the train. We hopped aboard and had an easy 20 hour run to Lanzhou. We passed Yumen Yuan (the Jade Gate) in the middle of the night and crossed the border into Gansu Province. Gansu (GONE-SUE) is the most northwesterly of the "permanent" provinces of China and was the protective territory for the Chinese part of the Silk Road, which it parallels very closely. The terrain of Gansu Province is a mixture of mountains and prairie, sort of like the eastern half of Colorado.

The capital city of Lanzhou (LON-JOE) has been turned into a city of heavy industry by the Beijing government in an effort to improve the economy of this still very remote area. Aunt Mabel, the air pollution was horrible! The Chinese aren't very sophisticated about the health hazards of uncontrolled coal-based heavy industry. The yellow and gray atmosphere sometimes reduced visibility in Lanzhou to less than two city blocks!

The Gansu Provincial Broadcasting Station had an interesting mixture of sort of Islamic music and classical Han Chinese opera. The station seemed weak even in the outskirts of Lanzhou. Tell Uncle Rowland's DX buddies to try 4865 kHz. at maximum dawn enhancement, for West Coast and Central, and try winter sunsets and dawns on the East Coast. This one will be tough. The schedule is 2150-0130, 0330-0620, 0900-1600 UTC.

Well, we waited about 36 hours at the Xinjiang Railway Guest House in Lanzhou. There would have been nothing to do in Lanzhou, but to our astonishment, there was a 1890's pocket billiards table the size of a basketball court in the Guest House and there were white jacketed attendants sorta like golf caddies. It was really intimidating having to line up a corner shot with a spotting scope. The snide remarks that the guys in the starched jackets made in Chinese didn't help, either! I never thought I'd be shooting serious pool out here!

When the train schedules straightened out, we chugged on in an easy 24 hour run to Xian (SE-ON), the last stop on the Ancient Silk Road. Xian was the first Imperial capital of China, and was established as such by the first true emperor of China, Qin Shi Huang Di (CHIN-SHE-WONG-DEE) in 221 BCE. Emperor Qin was responsible for the construction of the Great Wall of China and for the marvelous full scale terracotta army that was buried near his tomb. Xian was the capital of China for most of the next 1500 years until Genghis and Kublai Khan and their Mongol Hoards messed things up by founding Khanbalik, now Beijing, as the new Imperial capital in about 1300 CE.

Uncle Rowland, Xian is a "must" visit when you and Aunt Mabel get over here. First of all, it's one of the very few major cities in China which still has, intact, its old city defense walls and its huge fortress city gates. Most of the others were knocked down by various occupying armies--many western--in the past 300 years. Along with the walls and gates, you

should not miss the Shaanxi Provincial Museum. As you might expect, given the location and history of Xian, the provincial museum is certainly one of the two or three best museums in China. Among other things, it contains more Bronze Age artifacts than any other museum in the world. Of course, there is also the stupendous terracotta army--over 3000 individual full-sized warriors are on display near the site of Emperor Qin's grave outside the city.

Given the history and location, it is little wonder that the Chinese use Xian as the major transmitter location for covering all of northwest China (Central Peoples Broadcasting Station from Beijing studios), for broadcasting to the USSR and for broadcasting Radio Beijing world-wide, as well. Indeed, Xian is better represented on shortwave than any other city in China, save Beijing itself. However, the local provincial station (Shaanxi PBS) only broadcasts on one frequency, 6176 kHz (2120-0635 and 0930-1515) in standard Chinese. Some frequencies: 5030, 5090, 5163, 6176, 6825, 7335, 7360, 7375v, 7385, 7470, 7504, 8007, 9340, 9365v, 9440, 9570, 9575, 9590, 9900, 9945, 11575, 11685, 11945, 12015, 15120, 15165, 15260, 15385.

I used *Passport To World Band Radio* to check this list. PWBR is, by far, the best source for information on Chinese SWBC stations. However, lists are never accurate. Further, many of the above listed frequencies are shared with other Chinese sites.

---

## Passport to World Band Radio is, by far, the best source for information on Chinese SWBC stations

---

In the two months we have been here in Xian, we have seen many other points of interest. Our favorite was the Grand Mosque in the Muslim Quarter. Most tourists are surprised that there even is a Muslim Quarter in Xian. Of course, since we came 3000 miles across almost totally Muslim territory, it was no surprise to us. By the way, around 900 CE, the forces of Islam got right up to the gates of Xian, causing the Tang dynasty to fall and ending the great classical period of Chinese history. Well, Xian is a super place--don't miss it.

In the months that we've been on the Silk Road, I've gotten a lot more interested in Uncle Rowland's DXing hobby. There isn't much to do after about 6 PM in the PRC. No wonder they have a family planning problem! Anyway, I've gotten into this DXing stuff and have made some notes for the NASWA crowd:

1) If you want to get serious about IDing Chinese regional radio, find a person who speaks Chinese (try a local college) and have them read a list of all the provinces and major cities into a cassette tape recorder. MANY of the town names are NOT

pronounced the way a native speaker of Western languages thinks they will be when reading them written in the new "pinyin" spelling system (i.e. Hoh-hot = HO-HU-HOT!!)

---

## MANY of the town names are NOT pronounced the way a native speaker of Western languages thinks they will be

---

2) If you are trying to hear and QSL all of the Chinese radio countries, be aware that three of the current provinces of China (Heilongjiang, Jilin and Liaoning) made up the Japanese puppet "country" of Manchukuo before and during WWII and these same three count now as "Manchuria."

Some tips:

Heilongjiang PBS: Harbin -- 4840, 4925, 5925; Qiqihar -- 6150

Jilin PBS: Changchun -- 3310v, 6070

Liaoning PBS: Shenyang -- 4830

3) If you want to do some background reading on China, several lifetimes of reading exist. Highly recommended are "White Boned Devil" about Chairman Mao's widow, the Gang of Four and the Cultural Revolution, and, "Tai Pan" by James Clavell, as a good early fictional/true history of Hong Kong and the relationship between East and West. The book and movie "The Last Emperor" give a superb history of the 1900-1945 period and show the Imperial Palace/Forbidden City like it's not been seen since 1908. The movie is very popular in China!

4) The standard Chinese language is incorrectly referred to as "Mandarin dialect." It is properly called either "standard Chinese" or "putonghua." By any name, the Chinese language has an ability to cut through QRM and QRN like no other language on earth. IDing weak Chinese signals is infinitely easier than IDing stations using the very muffled languages of South and Southeast Asia. If you know the sounds to listen for (Item 1 above), you can ID virtually any Chinese audio signal.

Oh, I forgot to tell you, as we at last tumbled from the train at the main Xian station, having survived the awesome Taklimakan and completed our journey on the Great Silk Road, we spotted a strange group of folks in pastel polyester pants suits (!) with cameras hanging all over them. Most now looked sadly overweight to us. TOURISTS! AMERICAN TOURISTS! Actually, they were a DAR Tour from Cedar Rapids and they DID have some SPARE TOILET PAPER! You see, the Chinese invented toilet paper and even taught the Europeans to use it about 1540 CE. However, the present Chinese regime has NOT solved either the production/dis-

tribution or the softness problems. Little old ladies from Iowa aren't all bad!!!

China is an extremely diverse and interesting country to DX and to study. Its people are wonderfully friendly and its modern society is fascinating. Over the next 18 months or so, we plan trips to Inner and Outer Mongolia and down to central and southern China. We just might drop you at least a post card as we go along.

Uncle Rowland, I hope you, Aunt Mabel and your NASWA buddies have enjoyed these letters and I hope that they have made DXing China a little easier and a little more interesting. See you when we get back to the States. 73 or whatever it is you people say to each other.

### AUTHOR'S END NOTE:

I hope you have enjoyed our "factional" trip down the Great Silk Road to ancient China. It was "faction" because I have never taken this particular journey--it is my "dream trip." I've been fortunate to travel through much of China, but never northwest of Xian. However, the descriptions of people and incidents are composites of my own experiences elsewhere in China and those of several close friends and colleagues who have travelled most parts of The Great Silk Road. The descriptions of places and artifacts are accurate. My only artistic license about what we saw was moving the acres-wide pocket billiards table to Lanzhou from its actual location in Beijing. The pool table existed, with white jacketed attendants (intelligence agents?), in almost continuous use from about 1880 until 1980 on the first floor of the oldest section of the Hotel Peking. Welcome to the inscrutable East!!!

I am particularly indebted to my good friends, Professor Jing Qimin and architect Lian Jian of Tianjin University. At the request of the central Chinese government, they have become experts on the historical housing of far Xinjiang and have spent much time in Kashi/Kashgar. It was their description and sketches that appeared in Installment Two of this article. Incidentally, although MARIOANDRETTI WITHADEATHWISH is a figment of my imagination, thousands of Mercedes and Roman "truck aimers" exist in central and western China. I have ridden with several and dodged many more! Hope you enjoyed the journey!

\*\*\*

*Next time we are fortunate to have a great article by Don Moore on DXing Brazil. Don has travelled extensively in Latin America and is knowledgeable and articulate about the DX scene there. His article's theme is that Brazil is an under-appreciated source of DXing enjoyment. Find out why next month!*



# Easy Listening

Editor: Alex Batman, 300 Hill St., Apt. 6, Boone, NC 28607

The material for this month's column is part III of the DX program review submitted by Tom Lakowski.

## DX Programs: A Review

For those DX'ers wishing to increase their country totals and fatten their logbooks, FRENEX is an excellent source of DX news. However, a month between bulletins seems like a long time to wait. An alternate source of timely tips and up to the date DX news is the DX Program. Tom Sundstrom's excellent English Language SW Broadcast column listing these programs makes up excellent source of up to date, accurate schedules. On the other hand, many of them offer little if anything in the way of useful information for the DX'er. I have been listening to as many of these programs as possible over the past few months and have compiled this DX program review which is based upon the following criteria where applicable: 1. Timeliness of the DX tips, old news is often of little value. 2. Accuracy of the DX news eg: correct frequencies, station names, etc. 3. The usefulness of the news to the DX'er. To be as fair as possible, I have made an attempt to listen to at least 5 consecutive airings of each program in order to get a complete picture of what the program offers. I have devised the following rating system to provide an overall evaluation of the program.

- A: Excellent, don't miss this one.
- B: Good, quite useful to all DXers.
- C: Fair, not that big a deal if you miss a week.
- D: Poor, nothing useful here.
- F: Awful, hope for QRM.

On to programs: (in no particular order)

### R. RSA, Amateur Radio Spectrum

This is a very brief (about 5 minutes) program which basically focuses on the activities of radio amateurs, especially those in South Africa. Topics have included lots of items on the Trans Polar Ski Trek, ham get-togethers, AMSAT, and activities of an amateur in the Jungle of Zaire. I find this program only somewhat interesting but it is too short to be of any real value. Rating D.

### HCJB, Ham Radio Today

This program is very similar in format to HCJB's other program, the DX Party Line, except that it is devoted to amateur radio. The material is presented in a level easy to understand by non-amateurs or those new to ham radio (like myself). Many topics are covered and covered fairly well, such as propagation and the sun, adjusting mike gain and VOX controls, take-off angles, QRP operations, or antennae topics to name a

few. I think that people who are new to ham radio can learn alot from HRT since it does explain ham radio fairly well and it would be interesting to know what experienced hams thing if this program. of course, HRT doesn't leave out the religion which makes up quite a bit of the filler material in this program. All the useful material could be condensed into 15 minutes if the filler material was omitted. Rating C plus.

#### R. Sofia Bulgaria, R. Sofia Bulgaria Calling

RSB Calling is your basic DX tips oriented program but it does delve into a few other areas such as a monthly review of solar activity or reception reports. DX tips are either of SW stations and are usually very common loggings or inaccurate. RSB Calling also provides lots of Ham radio tips and news. Overall, this one is rather poor. Rating C minus.

#### R. Budapest, SW Club

A very poorly presented program which basically is not worth the time. As usual there are DX tips which are of very common stations, station schedules, club news, and otherness. The DX tips are given by a man and woman and they repeat each tip after one another which is very annoying. Also many of the station names are pronounced wrong. This program is almost ad bad as Moscow's. Rating D.

#### V. Turkey, DX Program

This DX program is presented bi-weekly and is kind of difficult to keep track of. Their program consists of news such as SX tips, tips from various club news, etc, much of which is out of date. The rest of the program consists of music from Billboard's Top 40. There really isn't much to be gained from this program. Rating D.

As mentioned in the beginning of this article, I made an attempt to listen to at least five consecutive airings of each program. The following programs were only heard a few times so I do not give them a rating. However, I did not find the too useful.

#### Radio Kiev, DX Show and Mailbag

A very brief beginner oriented program which is also sort of a mailbag session. A few topics heard included how to choose a receiver, amateur radio activities, and a comparison between longwave, mediumwave, and shortwave radio (at least they don't call it World Band Radio!) The material is fairly non-technical but is mostly accurate. I'm not sure if DX tips are provided. If so, they're not likely to be very useful.

#### AWR Portugal, AWR DX Program

This program looked at SW Broadcasting around the world and focused on CFCX in Canada. A brief summary of DX tips was given as well as some MW logs that were heard in Europe. The signal was very weak and most of the program was difficult to comprehend.

#### Radio Portugal, DX Show

One program looked at SW hobby tips such as how to choose a receiver and an antenna, D-Day recording (whatever that is), and news of a DX meeting in Brazil and Anarcon 88. They also provided some DX tips which were not too bad. This program was difficult to understand. The fact that this one is aired every 3rd Saturday makes it kind of hard to keep track of.

### Radio Korea, Shortwave Feedback

Basically, SW Feedback is a mailbag program which focuses on reading listeners letters and reception reports of Radio Korea. They also give some DX tips and frequencies for other DX programs. There's not very much to this program. About the only good thing I can say is that the Korean music they play after this program is excellent.

### Radio Havana Cuba, DXers Unlimited

A very new program which started a few months ago is called DXers Unlimited. It's very brief. a few of the things covered so far are satellites and their history, club highlights, and an explanation of shortwave. Much of the program is devoted to listeners letters of reception reports. It's rather poor but since it's new, give it time, it might improve.

\* \* \*

I hope you have enjoyed this DX program review which has been included in three parts. All opinions about these programs are my own and I'm certain others will be different. In any case, give them a listen. Hopefully you'll agree that DX programs are still a useful part of DX'ing.

---

Michigan Area Radio Enthusiasts  
P.O. Box 311  
Wixom, Michigan 48096  
U.S.A.

January 9, 1989

### PRESS RELEASE ... For Immediate Release.

The Michigan Area Radio Enthusiasts are pleased to announce a special meeting on Saturday, February, 25, 1989.

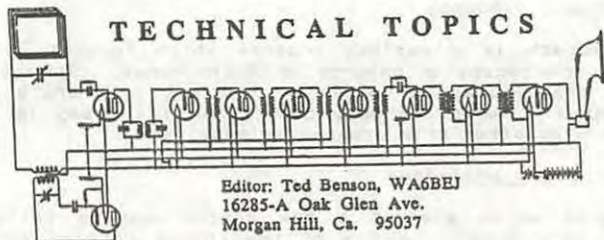
Ken MacHarg, host of HCJB's popular Saludos Amigos, will be presenting a slide presentation on HCJB and the country of Ecuador from 2 to 5 pm at the Henry Ford Centennial Library.

MacHarg, a regular on HCJB, has been heard on a variety of HCJB programming including the DX Party Line, Morning in the Mountains, and newscasts throughout the day. In addition to his broadcasting activities on HCJB, MacHarg can also be heard on WHAS-AM in Louisville. He is also an accomplished author having written the popular "Tune in the World" and "Introducing International Radio". MacHarg makes his home in the Southern Indiana community of Jeffersonville, and is the Executive Director of the Kentuckiana Interfaith Community. He's a hobbyist as well, having been a SWL/DX'er for many years.

This will be an exciting opportunity to meet an international broadcaster and hear how life is "on the other side of the speaker". In addition, there should be many surprises as well! We hope to see you there!

The Henry Ford Centennial Library is located at 16301 Michigan Avenue in Dearborn, a suburb of Detroit. The library is located east of the Southfield Freeway on Michigan Avenue near the Ford World Headquarters. Admission to the meeting if free, and non-members are welcomed.

For more information, contact Bob Walker at the Michigan Area Radio Enthusiasts.



Editor: Ted Benson, WA6BEJ  
16285-A Oak Glen Ave.  
Morgan Hill, Ca. 95037

## WITH AGE COMES WISDOM

I have received a number of letters from NASWA members, who are interested in "hints and kinks" for improving their enjoyment of the hobby, without having to sit for a PhD in the process.

### BACK TO THE BASICS

So often, when we are told to go back to the basics, we envision boring, pedantic books which begin with the model of the atom and pictures of twenty year old test equipment. Unless you are planning to go into engineering, these books actually hold very little value for we hobbyists. I (and many of you, judging from your letters) want ideas for quick, interesting, and *cheap* projects. As it turns out, there is now a tremendous variety of books and magazines which can supply you with exactly what you want. These are the reprints of early radio hobby articles and textbooks, available from many mail order suppliers.

### STONE AGE TECHNOLOGY?

How can "stone age" technology help the hobbyist in a high-tech world? Well, think about it... In the early days of radio almost everything had to be built by the user. There was no "Radio Shack" just down the street. And although you could order some things by mail, the cost was generally high (a transformer could cost the equivalent of \$150!). Experimentation was almost a religion, with new ideas being explored and written about at every turn. When the great depression came along, "home brew" construction was a necessity, because now almost no one could afford to buy commercially made parts. All of these factors combined to yield some of the most fascinating and inovative ideas I have ever seen (not to mention cheap). Within these windows to the past can be found methods of making your own capacitors (called condensers, then) and coils - useful for making your own antenna tuning circuits. Also to be found are construction details for shortwave receivers needing little or no power (great for camping, scout projects, or bomb shelters). Unusual antenna designs - many quite effective but long-forgotten - are waiting to be rediscovered.

### TRIVIAL PURSUIT

Not only are you likely to learn something useful from these old treasures, but the nostalgia and trivia itself can be quite entertaining. Do you know what a "rejector circuit" is? It's the forerunner of a notch filter. What about a "coherer" and its companion "tapper"? Did you know that the "Herzian Resonator" was the earliest form of transmitter tank circuit? Do you know what it meant to have a radio that was a "blooper"? This information can represent much more than just "yeah, so what?" bits of random data. They can give you a better appreciation for how radio got to where it is today. And after all, don't you better appreciate something when you know its history?

## PHANTOM SIGNALS

Several readers have written about problems with phantom signals, which appear on random, though usually unchanging shortwave frequencies. What makes these signals even more mysterious is that they sound a lot like AM broadcast band signals. They are! What you are hearing are products of actual AM radio stations, mixing with either other AM station frequencies, shortwave frequencies, or even the I.F. frequencies inside your receiver. If the AM signal is strong enough, no receiver is totally immune without some extra help.

I happen to live in the shadow of an AM radio station's transmitter antennas. When I got tired of listening to this station instead of KOL, Israel, where my dial was set, I knew something had to be done (either that, or take up BCB DXing). I found a novel trap circuit in a book called Practical Radio Construction and Repairing by Moyer (by the way, this book was published in 1927 by McGraw-Hill, so you should begin to see my point). What made this circuit novel is that it not only could it be tuned for maximum effect, but it contained only two parts, one of which could be salvaged from an old AM radio, the other could be built at home. The original circuit is shown below. Note that this is actually a pictorial. Schematics as we know them didn't come into wide spread use until WWII.

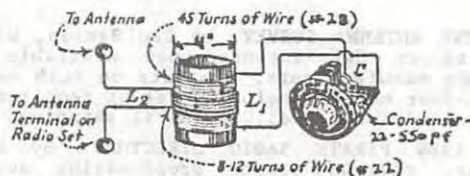
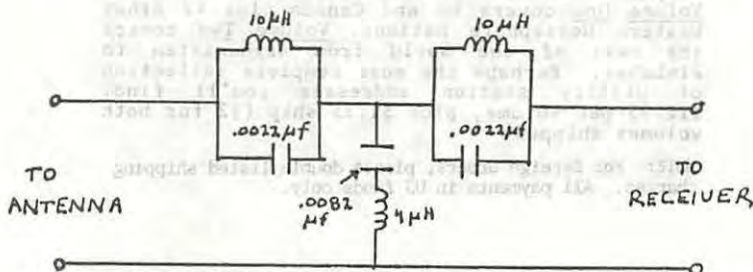


FIG. 154.—Wave trap.

The trap is simple to use. First, tune the AM station which is causing the interference - the one you hear where it shouldn't be. Then tune the trap for minimum signal. For the really adventurous, use a signal generator as a source, and calibrate the variable capacitor of the trap. You will then have built a *nulling wavemeter*! In the early days, this was one of the main ways engineers measured transmitter frequencies. Talk about a lack of resolution...

For those who don't mind building their own trap, but want something a little more modern, I suggest the circuit below. It is actually a *bandstop filter*. It traps the entire AM broadcast band. The circuit can be built on perfboard and mounted in a small metal box. Mount S0-239 connectors on each end of the box. Then cut your antenna feedline coax (close to your radio room, if possible) and place PL-259 connectors on each of the coax ends. Then simply connect your filter in series with the coax. When obtaining components for this filter, keep as close as possible to the indicated values for best performance. Because this is a bandstop filter, it won't stop you from listening to the VLF band if you are so inclined.



I have had many requests for information about the many commercially available shortwave listener antennas on the market. Most of these requests are of the "what is the best antenna" or "what do you think of the \_\_\_\_\_ antenna?" variety. To answer this need for information, I have written The SWL Antenna Survey. The Survey is exactly what the name implies: it is a complete description of not only the most popular, but also the most unusual SWL antennas - both outdoor and indoor - available today. Several antennas are shown here for the first time. Written in uncomplicated English, the Survey gives physical descriptions, operating features, prices, and installation recommendations for over 15 antennas. The Survey is available from Tiare Publication, RR4, Box 110, Lake Geneva, Wisconsin, at a cost of \$5.00, plus \$1.00 shipping and handling.

As always, good listening, and keep the cards and letters coming!

**TIARE PUBLICATIONS**

P.O. Box 493  
Lake Geneva WI 53147  
(414) 248-4845

**THE SWL ANTENNA SURVEY**, by Ted Benson, WA6BEJ, reports on SWL antennas now available from various manufacturers. Reports on both outdoor and indoor models including set-up requirements, prices and specs. \$5.00 plus \$1 shipping.

**THE 1989 PIRATE RADIO DIRECTORY**, by George Zeller, reviews pirate broadcasting activity during 1988, includes names of active stations, formats, frequencies, IDs and other identifying items, QSL info/addresses. (Available early February) \$6.00 plus \$1 shipping.

**SHORTWAVE GOES TO SCHOOL - A Teacher's Guide to Using Shortwave Radio in the Classroom**, by Myles Mustoe. Contains an introduction to shortwave, discusses how shortwave can be used to enhance learning, how to set up a Shortwave Learning Center in the classroom, necessary form "masters" which can be photocopied for classroom use and over 40 learning activities involving listening to or working with shortwave. \$24.95 plus \$2 shipping. (Available January/89)

**LOS NUMEROS - The Numbers Stations Log**, by Havana Moon. This is an up-to-date frequency list which now includes numbers stations in languages besides Spanish and English. Hundreds of frequencies for the numbers hunter! \$4.00 plus \$1 shipping.

**THE UTILITY QSL ADDRESS GUIDE**, by Symington and Henault. Two expert utility monitors have compiled thousands of utility station addresses. Volume One covers US and Canada plus 42 other Western Hemisphere nations. Volume Two covers the rest of the world from Afghanistan to Zimbabwe. Perhaps the most complete collection of utility station addresses you'll find. \$12.95 per volume, plus \$1.25 ship (\$2 for both volumes shipped)

**NOTE:** For foreign orders, please double listed shipping charges. All payments in US funds only.

Edited By:  
Tom McElvy, WDX4KQH  
P.O. Box 9645  
Norfolk, VA 23505-0645

# FRENDX PORTRAITS

a look at the members  
of NASWA

## What this is about: and why!

Welcome to a new series of columns here in *FRENDX*. In this column, we hope to bring you closer to the other members of *NASWA*, in an attempt to renew the spirit and feeling in our motto, "*Unity and Friendship*."

This column will be your column. About you. And, hopefully, by you. Remember the time when you could honestly say you knew something about these people written about here in *FRENDX*? These days, to many of us, the names are just names. No faces. No people. Just names. I that any way for the members of a club to be?

Well, the editorial staff wants to help you know all of these folks! What we envision is each member writing a brief biography, say around 250 words or so (darn...sounds like a high school paper...) and sending the bio and a small black and white photo of yourself, to me. In turn, each month I will try and highlight at least 2 of the members, 4 or 5 if certain people quit using 2 pages of their column to advertise their publications, hihi.

Think about the implications for a moment...now, for the first time in any SWL magazine, you can see the renowned Bob Brown of the *ANARC SWL Net*. You can gasp in sheer terror when you discover that Dr. DX is a real flesh and blood human being! (well, perhaps that is too much for a G-rated publication...)

I believe you have the idea. We want everybody to have fun and enjoy this column. Of course, we will be subject to occasional "bumping" due to seasonal material, etc. But what the heck, that is part of the game. But, think about how wonderful it will be to see your picture here in *FRENDX*. Oh yes, be tasteful with the photographs. We don't want the picture you had taken last New Year's Eve, hihi. Remember, this is YOUR chance to appear in the world's finest SWL publication!

In the next issue, we will show you just how easy this is going to be, as we look at our illustrious publisher, Bill Oliver. Bill has been publishing *FRENDX* for many years. He has also served as Executive Director, having recently

resigned that position to Chuck Rippel. But, that is a story for next month! So, start writing, folks!

## But Tom, What about the Computer Corner?

Why does everybody have a question when I am writing? Sigh. Well, the story kinda goes like this:

Once upon a time, there was a Computer Column in *FRENDX*, edited by the multi-talented Bill Cole. Bill passed the duties onto me, so that he could work more closely with the ANARC Computer Committee. Tom wrote columns. Tom asked for input from the reader. No mail. How sad.

And, to top it all off, our new Executive Director, Chuck Rippel, has voiced an opinion that the column was not needed in a SWL publication. Harumph! But, with all things considered, perhaps it was best that we found other ways to serve the SWL community.

But just to keep the dedicated computer enthusiasts happy, I will be running the COMPUTER CORNER as needed. This translates to approximated every couple of months. As products are developed for the computing SWL, I promise to make you aware of this on a timely basis. So, if you have any ideas, send them on, and I will do my best to make everyone happy!

That about wraps it up for the month. I look forward to this new column, and to hearing from you all. Until next month, Good DX'ing and 73!

Tom

*FRENDX PORTRAITS* was produced this month using an AT Clone and a H-P DeskJet Ink Jet printer, using the **Publish It!** software from Timeworks, Inc. The type face for the text is 12 point Dutch, and the subheads were done in 12 point Masison.

I will be experimenting with the column format over the next few months, so let me know how you like the looks of it, or send suggestions on how we can improve it. Many thanks, & 73!

## TWO CLOCKS FOR THE DXER/SWL

by  
William Krause

For many years clocks have been available which displayed the time at various points around the globe. These have ranged from large wall maps of the world displaying the time at different cities to more conventionally shaped and sized clocks which also enabled the user to see what time it was in the world's major cities. These clocks were probably marketed mainly for diplomats, international businessmen, and foreign travelers. However, because knowing what time it is in different parts of the world is also useful to people like us who call ourselves Dxers or Swls, we have also sought out these clocks.

In the years when LCD digital watches were first becoming popular (Yes I am old enough to remember the days before digital watches) many of these watches featured the ability to display a second time zone. I of course invariably chose GMT for that second time zone. In recent years the number of watches offering this ability seems to have declined. However a variety of clocks are still being made for diplomats, international businessmen, and foreign travelers. The qualities which make these clocks so useful to these groups also make them very useful to Dxers and or Swls. Since the number of travelers, businessmen, and diplomats who have use for these clocks is large and growing it is likely there will always be clocks made that have great usefulness for the radio hobby.

The recent advent of digital display and computer technology have allowed for a dramatic improvement in the capabilities of these 'International' clocks. I want to look at two of these clocks, which although they were probably not designed specifically for either Dxers or Swls, have tremendous application for our hobby. These clocks are made by Casio and Seiko, two of the world's leading manufacturers of fine watches and clocks. Their price ranges from \$20 to \$80. This compares favorably to older model clocks of this genre with increased capabilities.

Measuring just a shade under 4 inches long and 2 1/2 inches tall and priced at about \$20 the Casio model PQ-40U is both compact and inexpensive. It is also full featured, easy to use, and an excellent value.

About half the unit is taken up by a rotary switch with click stops for each of the 24 major time zones around the world. Beside each stop, in rather small, but still readable type, is a major city in each of these time zones. A simple provision is made on the switch for displaying day light savings time for any of the time zones. The inclusion of 24 time zones is a big improvement over many other clocks and watches which may include only a limited number of different time zones. As a Dxer I often listen to stations from some of the more exotic time zones which have not always been included by other model clocks.

The display is a liquid crystal display (LCD) and takes up about 25% of the unit. It is the most outstanding feature of this clock. It displays both local time and another time zone which you select with the rotary switch. The display may be for either 12 hour or 24 hour format. One display is approximately twice the size of the other. Best of all you can quickly and easily change which of the two times you want the larger display to be. Most of the time, I prefer the larger the display to be my local time. However, when I am Swling or Dxing I flip the switch and the display for GMT or the time in Noumea becomes the larger display.

The remaining 25% of the clock is taken up by other switches and the like. It has an alarm clock feature which was surprisingly loud and worked very well. It also has a small folding stand which I have found to very useful. The clock uses one clock/calculator battery which is suppose to last a year and it also comes with a handy travel case.

It is rare to find any product that is designed exactly the way you would do it, that is the case with this clock. I wish this clock had a light, as do many LCD watches. This would be particularly useful for late night or early morning Dx'ing. I wish there was a way to display more cities for some of the time zones, but size of the unit mitigates against that.

If you are a Dxer or an Swl and can afford only one clock dedicated to your hobby, then the Casio PQ-40U should probably be it. The combination of dual display, 24 time zone capability, and easy portability make this an outstanding choice.

The Seiko 'World Time Digital Quartz Touch Sensor Clock Model QNS901G (that's a mouthful) is much larger and more expensive than the Casio model. It is almost 8 inches long and a little over 5 inches tall. It sells for about \$80. It is also something very special.

What makes this clock so special and unique is not its display but rather the handsome map of the world which covers about 80% of the clock's face. This map done in handsome brass with a clear plastic overlay has the boundaries of the world's major time zones engraved on it. That's very nice, but not really unique or very special. What is so special and unique is the way you find out what time it is in a certain place in the world. Simply touch the map and you are instantly told what the time, day, and date is at the place on the map you have touched. This is more than just neat!! The instruction book suggests a light touch with your finger. That will probably work well for most people. Unfortunately I have very large hands and fingers that were great for grasping a football, but leave a little to be desired for work like this. I mostly use the drawing stylus from my computer graphic pad or an old plastic alignment tool. I have also found that an unsharpened pencil or a ball point pen, without the tip extended, works very well. The instruction manual offers no advise on what items might not be safe to use, but I would be inclined to play it safe and be careful about what I use for this purpose.

This is the most outstanding method for finding local time around the world that I have come across. On the Casio you might not realize that Lagos, Nigeria is in the same time zone as Paris, France. More likely you will have difficulty on virtually any other clock of finding the correct time for one of the Soviet Union's eight (8) other time zones besides the one where Moscow is located. What about the different time zones for China or Indonesia? With this clock there is little chance of error in finding the correct local time for almost any spot on the globe.

The LCD is big, an inch tall, and very easy to read. There is a provision for either the 12 hour or 24 hour format but it is much harder change between formats than it is with the Casio. It uses 3 AA batteries. The instructions give no anticipated battery life, but these batteries are generally quite inexpensive and easy to find. The controls are in the battery compartment and not as accessible as the ones on the Casio. However, once set, there should be little need to access these controls. There is no alarm feature on this clock. It is obviously meant more as a show piece rather than a traveling alarm.

In addition to some of the minor deficiencies I have already mentioned this clock also does not have a light. More importantly to me, it has no form of stand. As it comes, it will sit rather nicely on a desk. However I want my clock to stand more upright on my radio so I use an old stapler to prop it up.

If you're serious about radio, particularly Dxing, and you've got the bucks, then this clock is for you. When I Dx, and sometimes when I just Swl, I often want to know the exact local time. No clock that I know of does such a good job of that as the Seiko Model QNS901G.

Most people won't be able to afford both clocks. I bought the Casio and my wife gave me the Seiko as a birthday gift. They sit side by side on top of my radio. The Casio is set up in the 24 hour format and the larger display is set to GMT and the smaller display is set for my local time. The Seiko is normally set to my local time but I always change it to the local time of whatever station I am listening to. Even together, they don't cost anymore than a lot of other radio accessories, and sitting together side by side, they make a nice pair.

---

FOR SALE: Grundig Yacht Boy 215 portable with UTC clock/timer. Brand new in original box with manuals and batteries. Price \$70.00 plus shipping. ALSO: "Passport to Worldband Radio", special Grundig 1988 Grundig edition by Larry Magne. This edition was published for sale especially by Grundig dealers, thus it lacks ads for other receivers and Magne's test reports. Near-mint condition, \$10.00. 1988 WRTH, hardly used, \$14.00. Both of them for \$22.00. Books sent postpaid. Dale Park, 2253 Kaneali'i Avenue, Honolulu, HI 96813.

FOR SALE: Code Reader, CW/RTTY/ASCII, with AC adapter, \$99.00. WRTH '87 and '88, \$9.50 each. FRENEX '87 and '88 complete, \$7.50 a year. "Passport to Worldband Radio", \$9.50. Gilfer Confidential Frequency List and Guide to RTTY Frequencies #6, \$5.25. All items include shipping. Cashiers check or money order, please. Al Drehmann, Route 2, Box 3-B, Tryon. NC 28782. Phone (704) 894-3398, not collect.

FREE!! Well, not exactly free, but almost. If you send a 25¢ stamp to NASWA Headquarters, we'll send you a copy of the latest DXtra by Bob Hill. The January issue has some fine items. No envelope is necessary; just a stamp.

This issue is a little thin. Three columns haven't arrived and Glenn Hauser is having mail problems. Combine this with almost no English to North America changes and the printer saves paper. We'll get 'em next month.

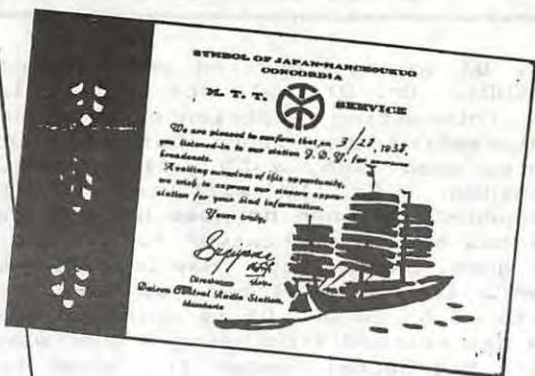
NASWA COUNTRY LIST/AWARDS PROGRAM BOOKLET IS STILL AVAILABLE.

Send \$2.00 for a copy of the typeset 16-page combination Radio Country List and Awards Program booklet to NASWA, 45 Wildflower Road, Levittown, PA.

# the **CPRV** page

COMMITTEE TO PRESERVE RADIO VERIFICATIONS

JERRY BERG, Chairperson • 38 Eastern Ave. • Lexington, MA 02173 • (617) 861-8481



Manchuria was active in shortwave broadcasting during the Japanese occupation of the 30's, when the Chinese province was known as Manchukuo. The stations were MTCY, Hsingking, and JDY, Dalren (now Lu-ta, formerly Port Arthur). They were well heard in the United States and, as you can see, the QSLs were real prize winners. These veries were donated by Eugene S. Allen of Vallejo, California, and the family of the late dean of the SW hobby, August Balbl of Los Angeles. +++ CPRV's goal is to preserve QSLs belonging to DXers of earlier days, and to save this material from loss or destruction. If you know of any QSLs in this category, please contact the CPRV chairman at the address above. Thanks.

Dear Mr. Eugene S. Allen

We are in receipt of yours of April 13th., reporting reception of our Short-Wave Radio Program over MTCY on April 13th.. We hereby verify your report and thank you sincerely for it.

It is our hope that you will continue to send us such reports, including receiving set and reception details as well as any criticisms and suggestions you may have regarding our programs.

Although transmission times and wavelengths are subject to change with atmospheric and other conditions, we are pleased to give you our present transmission details herewith:

TIME: 6:30 to 7:20 GMT.  
STATION: MTCY 20 Kw.  
WAVELENGTH: 25.47 meters  
PROGRAM: News, Music, Eye-Witness Accounts, and Informative Talks.

Thanking you for your kind help,  
Yours very truly,

SHORT-WAVE SYSTEM  
Hibbing Central Broadcasting Station  
Manchuria Telephone & Telegraph Co., Ltd.

Mr. August Balbl:

We are in receipt of yours of June 4th. reporting reception of our Short-Wave Radio Program over MTCY between 6:30 and 7:20 Greenwich Meridian Time on 6/4/37 54'60". We hereby verify your report and thank you most sincerely for it.

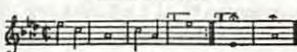
Will you please continue to keep in touch with us.

MTCY, 20 kW. 25.47 m.  
1,780 Kc.  
6:30 to 7:20 GMT.

SHORT-WAVE SYSTEM  
Hibbing Central Broadcasting Station  
Manchuria Telephone and Telegraph Co., Ltd.

**MTCY**

Identification Signal



A Committee of the Association of North American Radio Clubs

=====

DR. DX SHARES SOME SWELL SHORTWAVE SECRETS

=====

Dr. DX is sure excited about being back in the pages of FRENEX. Dr. DX could not be here last month because he had an interesting experience. Dr. DX cannot tell you the interesting experience but it involved an AMTRAK train, three dead fish, a 55 gallon drum of Wesson oil, and John Kapinos. Dr. DX will try to figure out exactly what happened and when he does he will tell you that story. Dr. DX has been a shortwaver for a long time and everywhere Dr. DX goes, people say, "Hay Dr. DX, you have been a shortwaver for a long time--I bet you have some tips you could share with us." So Dr. DX is going to share the two best secrets he has learned from being a shortwaver for a long time. Dr. DX's Big Secret Number 1: Never buy a radio that does not work. Dr. DX has found it very hard to hear more than a handful of rare DX stations on a radio that does not work. Once you find a good radio, Dr. DX thinks you should attach it to a good antenna, like the front bumper of a 1961 Volkswagon. It is important to ground the radio and Dr. DX has found a six foot hole works best. Dr. DX's Big Secret Number 2: Dr. DX has to give Mrs. Dr. DX credit for helping him discover his second big secret. One night after Dr. DX had been listening to RAI for six hours, Mrs. Dr. DX with fire in her eye told Dr. DX to take his radio and put it where the sun don't shine. So Dr. DX took his receiver to the basement. It was very cold in Dr. DX's basement and Dr. DX discovered he could hear Scandanavia real good. Now you do not have to hit Dr. DX over the head to make him learn something (although Mrs. Dr. DX says it helps). A light went on in Dr. DX's head. To try out his idea, he and his receiver climbed into Mrs. Dr. DX's freezer. Dr. DX then found he could hear Antarctica real good. Dr. DX calls this his you-hear-where-you-are theory and it sure works swell for Dr. DX. Dr. DX now listens to Abu Dhabi in the daughter's DX sandbox, the Voice of the Andes high up in a tree, and Radio Australia while hanging upside down in his air raid shelter. Papua New Guinea greets Dr. DX in his sauna and Dr. DX has found that Radio Tirana is best heard in his bathroom. One small problem is WYFR, which Dr. DX hears everywhere, even when he does not have his receiver. That is the kind of problem Dr. DX loves to work on and he will and let you know how it comes out another time. Dr. DX told Mrs. Dr. DX all about his hear-it-where-you-are theory and suggested to her that he sure would like to hear "Love Ambon." Dr. DX is now back in the basement listening to Scandinavia. If Dr. DX ever gets out of the basement he will tell you more about his theory.

## THE 1989 WRTH INDUSTRY AWARDS

**Amsterdam: January 10th 1989:** Today, the editorial office of the World Radio TV Handbook, announces the launch of a new prestigious annual award scheme. In over 40 years of continuous publication, the WRTH has received many awards itself as the industry reference standard in the field of international broadcasting. Now we believe it is time to announce some awards ourselves. We hope these will act as a stimulus to provide the global market place with even better products.

Although WRTH is a commercial publication, our strict policy of impartiality in the field of equipment testing is well established. Manufacturers have no prior knowledge of our test results, and the measurements we perform are made following internationally recognised standards.

The WRTH industry awards have been divided into four categories this year. Here are the results:

- **Best Communications Receiver : Kenwood R-5000.** In the semi-professional communications receiver group, this set is clearly a winner. It combines all the functions needed for effortless listening, together with good quality audio.

- **Best Portable Receiver : Sony ICF-7601.** This is not a digital portable, and has been overshadowed in the publicity by more expensive receivers. This analogue portable offer crisp reception, good performance for the price, and is ready for shortwave broadcast band expansions taking place this year. We feel that there are not enough budget analogue portables with good performance, hence the choice of this receiver.

- **Most Innovative Software : Shortwave Navigator.** This is a Macintosh computer program developed by Jim Frimmel. It is a computer "card index" which gives the user access to the schedules of many international broadcasters and their programmes. His idea of recording some of the sounds heard on air into a computer program deserves recognition. This kind of approach dispels the "old fashioned wireless" image that some members of the general public still hold about international broadcasting.

- **Best Computer Accessory : Shortwave Database.** Tom Sundstrom of New Jersey deserves credit for his active promotion of the international radio listening field. His database of monitored schedules, and the Pinelands bulletin board confirm his dedication to the medium. We think that it should be recognised.

Nominations from readers for next year's awards are now being invited by the editors. These awards are not restricted to any country, or language.

Formal presentation of the awards will take place during International Radio Days in Berlin (May 26-28th 1989) (Best Receivers) and Association of North American Radio Clubs convention in Florida 20th-23rd July 1989 (Computer Software Awards)

*About the World Radio TV Handbook: The 1989 WRTH has just rolled off the presses and is being distributed to dealers worldwide at this moment. New improved computer techniques have ensured the publication is more up to date than ever before. With a print run of more than 55,000 copies annually, the publication is the largest and most comprehensive of its kind. It is the standard industry reference source for thousands of Radio and TV stations worldwide. The book's editorial team, headed by editor Andrew Sennitt, is based in The Netherlands. The WRTH is published by Billboard Publications Inc, 1515 Broadway, New York, NY 10036 USA.*

END



"THE ART OF LAm QSLing"  
Casilla 57 Suc. 40  
1440 - Buenos Aires  
\* ARGENTINA \*

Buenos Aires, December 1988.

Dear OMs,

Here we are writing to you again, first of all we'd like to thank you warmly for your co-operation in promoting LA-DXing, by mentioning our DX-Publication, "The Art of LAm QSLing" in your DX-Magazine/Program.

We are both nicely surprised not only for the positive help received from all we have written to, but to the enormous response we have had worldwide: we've received over 100 request in less than a month.

It is nice to see that so many DXers are interested in Latin-American DXing, one of the most fascinating from our point of view, that is.

We're writing again so as to request for your help once more, as we're sure that still there is a large number of DXers interested in obtaining a larger amount of responses to their reports, and our publication will surely prove to be useful.

We've prepared this booklet in a 10-page format (not 8 as previously mentioned), including as many useful infos as we could, such as recommendations about reporting LA-stations, key-phrases for including in reports, sample reports and introductory letters, advice about how to report the frequency, signals, covering postal expenses, etc. We've also included list of football (soccer) teams, musical rhythms, local currencies, native languages spoken on the radio, etc.

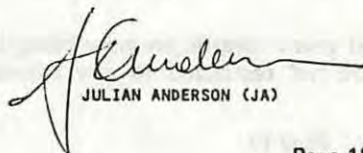
All is explained in English, and those sample reports, letters and phrases are shown bilingually in English and Spanish. Some Portuguese has been included, too.

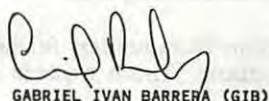
This edition is priced at 3 USD or 6 IRCs, please bare in mind that with this, we're just covering postal & printing expenses, our only aim is to promote LAm DXing.

We would like you to please mention again this work in your publication / programme if possible, so as to induce more DXers to listen, write -and of course, verify- 'exotic' LAm radios.

Thanking you in advance, we remain,

Yours sincerely,

  
JULIAN ANDERSON (JA)

  
GABRIEL IVAN BARRERA (GIB)



# Listeners Notebook

GLENN HAUSER, Box 1684, Enid, OK 73702

PROPER CREDIT Other publications and broadcasters may use material from LN, provided due credit be rendered to the original reporter and the NASWA Listeners Notebook. This courtesy does not apply to closed organizations which do not allow reciprocal access to their publication. BBC Monitoring items (designated WBI for World Broadcasting Information) are copyright and may not be reproduced without BBCM permission. The most important items have been broadcast immediately on SWL DIGEST or WORLD OF RADIO, not otherwise mentioned herein. All contributions to LN are gratefully received, but your editor cannot promise a personal reply because of severe time constraints. Material for LN should be marked as such each time, not just on the envelope, as input for other gh outlets also comes to Box 1684. Reports to gh should not be cut into little strips. It also helps if you use one side of paper only and do not mix LN items with other correspondence. All times, dates and days are day/month GMT = UTC, u.o.s. Please do not ask gh for advice on receivers or other equipment. Thanks (gh)

AFGHANISTAN (cf Dec LN-12) gh clearly struggled with my report to the point of misrendering my "4740" for "9740". In fact this entry was made nonsense--perhaps more directly by my doing--since the point was that the feeder fq was loud "esply since 3965//4740 were not nearly as loud as they can sometimes be," but the "not" wasn't there, which presumably left people wondering (Richard Stoller, Colombia, 12/1) Furthermore, as in Jan LN, it wasn't Afgh....

BRAZIL (I warn you, here's another contributor whose handwriting I have a hard time reading; any help by using block letters or typing would be most appreciated by all --gh, lacking brackets on this ball) R Excelsior, 2120-22 PT pgm w/orator, A Voz do Brasil, to this following // fqs (which I can hear) 11925 11905 11805 11785 9665, at 2153. Clear ID as R Excelsior...Globo Journal...Sao Paulo, on 9585 where they are listed, 28/12 (Roland Schulze, Stuttgart, Federal Republic of Alemania) Pgm on one hour earlier due to DST, about over now (gh)

## C H I N A (PEOPLE'S REPUBLIC)

CPBS has changed its shortwave transmission schedule since Nov. 25, 1988. Monitoring observations show the services are carried out on the following frequencies.

1st Program: 2000-1733 overall exc 0600-0853 on Tue.  
17605 0006-1330, 15590 0021-1400, 15550 2346-1145, 12120 2000-1733, 11610 0101-1510, 11330 2321-1345, 10245 2201-0100 1100-1733, 9800 2221-0100, 9080 2000-0020 1401-1733, 9064 2000-1733, 7935 2000-0100 1511-1733, 7516 2000-2300 1100-1733, 7504 2000-1733 exc 0530-0900 on Fri, 7440 1100-1733, 6840 2000-1733, 6750 2000-0100 1100-1733, 6125 2000-0100 1100-1733, 5915 2000-2220 1100-1733, 5880 2000-0100 1100-1733, 5860 2000-2200 1100-1733, 5320 2000-2345 1146-1733, 4905 2000-2300, 4460 2000-0005 1331-1733, 3220 2000-2320 1346-1733.

2nd Program: 2100-1558 overall exc 0600-0953 on Wed & Fri.  
17700 0216-1040, 15500 0000-1000(to 0600 on Wed, Fri), 15030 0100-1100, 12200 2301-1200, 11740 2100-0215 1041-1558, 11630 1100-1200, 11505 2331-1130, 11040 2331-1130(exc 0515-0900 on Tue), 10260 1200-1315, 9775 0001-0200 1030-1130, 9755 2341-0200, 9400 2100-1558, 9390 2100-0059 1301-1558, 8007 2100-2400, 7770 2100-1558, 6920 2100-2340 1330-1558, 6890 2100-2330 1131-1558, 5163 2100-2340 1000-1558, 5075 2100-2359 1001-1558(from 0953 on Wed, Fri), 5030 2230-2400 1300-1558, 4800 2230-0200 1000-1130 1300-1558, 4250 2100-2330 1131-1558, 3290 2100-2300 1701-1558

Broadcast for Minority Nationalities:  
0000-0026 Tibetan 15670 11375 6920, 0030-0056 Uighur 15670 11375

10260, 0100-0126 Kazakh 15670 11375 10260, 0430-0456 Korean 9920  
9775 8566, 0500-0526 Mongolian 9920 9775 8566, 0530-0556 Tibetan  
17635 15670 11630, 0600-0626 Uighur 17635 15670 10260, 0630-0656  
Kazakh 17635 15670 10260, 1000-1026 Korean 9920 9775 8566, 1030-1056  
Tibetan 15670 11630 11375, 1100-1126 Uighur 15670 11375 10260, 1130-  
1156 Kazakh 15670 11375 10260, 1200-1226 Korean 5420 5030 4190,  
1230-1256 Mongolian 5420 5030 4800 4190, 1300-1326 Tibetan 11375 8566  
6920, 1330-1356 Uighur 11375 8566 8007, 1400-1426 Kazakh 11375 8566  
8007, 1430-1456 Mongolian 11375 8566 8007, 2130-2156 Korean 5420  
5030 4190, 2200-2226 Mongolian 5420 5030 4800 4190.

Broadcast to Taiwan 1st Program: 0055-0609 & 0955-0004 overall.  
15710 0055-0609, 11925 0055-0609 0955-1225, 11100 0055-0609 0955-  
1245 2216-0004, 9455 0055-0609 0955-1315, 9380 0955-1415, 7620  
1226-0004, 6015 1246-2215, 5125 1416-0004, 3815 1316-0004.

Broadcast to Taiwan 2nd Program: 2055-0104 & 0355-1804 overall exc  
0604-0953 on Wed.  
15880 0353-0900, 11000 2246-0104 0355-1130, 9170 2231-0104 0901-1804  
6790 2055-2245 1131-1804, 6095 2231-0104 0355-1300, 5090 2055-2230  
4850 2055-2230 1301-1804. (Satoru Suga)  
(East Asian DX News, 17/1 of Asian Broadcasting Institute, Japan, compiled and  
translated by Tetsuya Kondo)

#### COSTA RICA Last Minute Info

CZECHOSLOVAKIA DPA nx agcy reported 17/12: Cz stopped jamming of fcn bcs on  
Sat (17/12). All jammers switched off. Apart from RFE, DW had been particu-  
larly affected by jamming on its fq (sic--only one?). The end to jamming was  
not confirmed officially. Hungarian R reported 17/12: bcs of RFE not being  
jammed any more in Cz and reception of other Western bcs not being made diffi-  
cult either, a spokesman for Prague govt told reporters of American AP nx agcy.  
Not long ago J of bcs from W radios also given up for good in Soviet Union.  
Earlier, at various meetings to strengthen confidence, Am & WEU delegations  
had accused socialist countries of not giving free passage to flow of info.  
Monitoring research 16-18 Dec: J obs on RFE Cz fqs 16/12 but when checked  
at 1000 17/12 all chs appeared to be clear. Other RFE xmsns now appear clear  
except for Bulgarian. J of BG from R Tirana, Vatican, RAI=Italy also appears  
to be continuing (WBI 23/12) But BG jam subsequently dropped too (gh)

ECUADOR R Federacion, Sucua, 3360.1, \*1100-1118 G-F on 26/11. First time  
their 90mb xmsn hrd in Japan. 4960 is well known and not very difficult to  
pick up. After some cl mx, began xmsn w/NA, then mx & cultural pgm in Shuar  
vern. Authorized fqs are 4960 4830 3360 3210, covering the eastern provs of  
Morona Santiago, part of Pastaza and Zamora. Has total of 6 xmtrs, two 10 kW,  
two 5 kW, one 1 kW, and one 0.3 kW, located 2 km from downtown Sucua. La Fe-  
deracion de Centros Shuar has taken on the urgent task of providing education  
to the children by radio, overcoming the lack of infrastruxure and Amazonian  
isolation. The idea was born in 1962, nonprofit. 30 reception centres with  
473 kids concluded the first school cycle thanks to these pgms. Until 1976  
it functioned w/ own resources and limitd foreign aid. In 1977 the system was  
officialized under the Ministry of Education. Adult education added in 1980..  
Is bilingual and bicultural to introduce the Shuar into national life. Cur-  
rently HCSE7 xmts pgms averaging 6 hpd: 11-13 and 23-03, almost 95% in Shuar,  
5% in SP for IDs and msgs. SP pgms discontinued in 1983. Reports should be  
sent to: Domingo Comin 17-38, Sucua, Provincia Mrona Santiago. V. by QSL  
card, multicolor pennant. (Takayuki Inoue Nozaki, Tokio, Japan, Relampago DX)

GUATEMALA R Maya, 3324.8, Santa Cruz Barillas, 12-1210 F 3/11, ID says 3325  
and 2360; then vern mx, pgm in K'anjobal lang. R K'ekchi, LV Evangelica de  
Las Casas, 4844.5, 1055-1200 F 3/11, relig pgm in K'ekchi, a little SP. ID  
says 4845, TGDC, Las Casas. Now has new Gates BC-5P-2 xmtr of 5 kW (Takayuki  
Inoue Nozaki, Tokio, Japan, Relampago DX)

GUYANA Recent QSL ltr from erratic verifier GBC, from Mr Ted Marshall, Tech-  
nician, indicates secretary Phyllis Hyles no longer working w/stn, as indica-  
red in Aug LN. All reports should be directed to Mr Marshall at listed addr.  
Also says a SASE must be used w/at least 150 (units?) postage for airmail re-  
ply. 5950, stn not being hrd lately here (Kent Willis, Louisville KY, 9/1)

HUNGARY R Budapest in EG (one hour earlier summer): 0030-01 Mon-Sat Am on  
15160 11910 9835 9585 9520 6110. 0130-02 daily same. 02-0230 Sat same (also  
Wed per skeds I get from Budapest -gh). 0230-0245 Tue/Wed/Fri/Sat DX pgm on

same eqs. 1045-11 Sun DX Pgm Eu 15220 15160 11910 9835 9585 7220. 1130-1145 Sat DX pgm Eu on same. 1615-1630 Mon/Thu DX pgm Eu same. 19-1930 Tue Eu on 15160 11910 9835 9585 7220 6110 (outdated info; this Hungarian History show rescheduled to Tue/Fri 2230 -gh). 1930-20 Eu/ME 15160 11910 9835 9585 7220 6110. 21-2130 Eu/ME same. Total weekly output is only 85.30 hpw, of which 27.30 is in HG, 16.30 in EG (WBI 23/12)

INDIA Asian DX Review No. 102 carries a curious item about how to get a SWL licence in India. By following various bureaucratic procedures, and paying 25 Rs for 2 years, or 60 for 5 years, providing birth, nationality info, etc. one may be registered with the government as an SWL. Apparently few SWLs have actually done so, and it is impossible to tell from the item whether this is a legal requirement, or something which any SWL in India should want to do. The idea sure wouldn't go over in the US, would it? But then hundreds of SWLs voluntarily paid \$ to a NJ DX editor to make up callsigns for them... (gh)

Aralu Mallige, a remote village 10 (sic) off Dodballapur, near Bangalore, is busy giving shape to AIR's long cherished dream of making its voice heard by people around the world. Next Jan, the super-power SW radio xmtr being installed here will be in full bloom. The xmtrs have (been) designed and built by Asea Brown Boveri of Switzerland, the installation at present consists of two 500 kW SW xmtrs along w/associated antenna eqp. Under Phase II of the project, four more 500 kW xmtrs will be added on in the next two years. When commissioned fully with all the six xmtrs in action, the Dodballapur complex will be the biggest of its kind in Asia. The European beam, centred on Moscow, will cover Eu and parts of America. The NAF beam will serve most of Af. In its reverse direxion, the beam will land in Australia. With the complex's skip area being 100 km, Bangaloreans will not be able to catch the waves on their sets. Mr M J Viswanathan, AIR South Zone C.E., who recently visited the project site, said work on the upgradation of present 50 kW MW xmtr in Bangalore to two 100 kW MW xmtrs, supplied by BEL, and erection of new 132m high ECIL mast was likely to be completed by Nov 88. AIR ES currently being bc by SW xmtrs at Aligarh, Khampur-Delhi and Kingsway-Delhi, w/support svc by Bombay and Madras stns. Aligarh stn w/250 kW xmtr is strongest ES stn in country now. W/most for countries, incl Pak, China, Nepal, Bang, SL, installing 500 kW xmtrs, reception of AIR bcs in target areas had deteriorated considerably. Indian embassies abroad had also constantly complained about this. Aralu Mallige complex will make India's voice more audible in target areas (excerpts of report in Deccan Herald, 31/8/88, via IDXC1 member No. 6, ADXR-102)

ISRAEL Israel R EG svc until 5/3: Nam: 0000, 0100, 0200 on 9435 9385 7460. 05 on 11605 11585. UK/Eu 05 on 11605 11588 9455 9435 7460. 11 on 21760 21625 17575 15095 11585. 18 on 11585 9930 9455 7405. 20 on 9855 9800 9435 7462 7355. 2230 on 11605 9855 9800 9435 7355. SAF at 20 on 9010. Au/NZ/SEAs at 05 on 17630, 11 on 15650 (via Richard Lemke, St Albert Alta, Canada)

KAMPUCHEA The Overseas Svc, R Voice of the People of Kampuchea recently noted in a letter that they seek reports, remarks, and suggestions from American friends. While this sounds like reqs from a number of intl svcs, I already ran this in Jan LN, qv, and too much trouble to remove here now (gh)

LEBANON R Leb reported 18/12: Islamic Resistance ancd that this morn one of its groups blew up the agent-Lahad-owned V of Hope bldg in the Dardarah plain at Marj Uyun. Resistance issued statement on opn, saying a 2nd group had bombarded area to facilitate withdrawal of first group, which managed to return safely to base. Grave losses inflicted on the agent militiamen.

V of Israel reported 18/12: authoritative security source has denied the claimed destruction of the VOH bldg in S Leb this morn by Isl Res, which is the mily wing of the pro-Iranian fundamentalist Hezbollah party. Stressed that these claims were baseless. All that happened, was the RPG rockets and machinegun fire were directed at VOH bldg, particularly at the stn's antenna. No one was wounded and no damage done. Source stressed that VOH continued xmtg pgms as usual. VOH reported 18/12: At dawn today, group of saboteurs tried to attack the bldg housing xmsn masts of VOH in Marj Uyun. A few RPGs were fired in direxion of bldg, w/bursts of machine-gun fire, but xmsn masts and eqp sustained no damage. Immediately afterwards, SLebArmy force searched area; found and defused a number of 107-mm rockets ready to be fired at masts.

While force was dismantling an explosive charge that had been planted in the same area, the device blew up, killing two soldiers.

Monitoring research 18/12: when checked at 0900, VOH hrd bcng normally on 6280 and 945 kHz (WBI 23/12)

PERU 3290.1, R Tayabamba, Tayabamba, \*1101-1109 F 27/11; after NA ID as OAZ9D on 3290, then habitual nx Patataz en la Noticia. Per info sent by Moises Nehe-mias Leyva Lopez, Administrator, R Tayabamba was founded 1/7/83, to provide communication to all of Patataz province, under direction of Israel Alva Lavado, native of Contumaza. Simulcasts MW 1580 1 kW OAZ2D, 1 kW on SW. Both xmtrs made in Lima by a Peruvian engineer.

4299.8, R Moderna, Celendin, 1124-1130 P-VP w/fax QRM 27/11. After piece of Andean tropical chicha mx, ID, TC 6 am. Ex-4299.3. Do not confuse w/R Gra-u, which is currently on 4300.7, ex-4005v. Note: R Moderna formerly had eve xmsn only at 23-05 since those were only hours electricity was on in Celendin. And so did the majority of celendinan stns. Uses Pv xmtr with 250 watts ERF, halfwave dipole. For the moment, R Moderna has no official licence, authorized by Min of Transport and Comms.

4810.2, Estereo San Martin, via R San Martin, Tarapoto, 0630-0658\* F 27/11. Basically played tropical dance mx such as salsa, cumbia, for Saturday fiesta. 0658\* w/NA.

4881.7, R Nuevo Mundo, Pucallpa, 1040-1059, F 27/11. Tnx to Shuichi Sasa-ki for tip on new stn which needed confirmation. Pgm La Nacion Tropical w/tr-op dance mx, chicha. 1055 ID as from Ucayali on 1300 kc, ORC, RNM de Pucall-pa. La radio uno". w/mx theme also used by R America de Lima, R Nueva America in La Paz, Bolivia. Of course it is stn in the Organizacion Roberto Cruzado net. I'm glad RNM is finally on 60m. Almost 3 yrs ago I visited city of Pucallpa, capital of prov of Coronel Portillo, Depto de Ucayali. RNM is on Calle 9 de Diciembre in the western part of the city from where a marvellous panorama of the countryside around Rio Ucayali can be seen. Has its own building. Inaugu-rated 28/2/70 as 3rd stn in city under name R Monterreal, 1300 kHz w/RCA xmtr of 1 kW, 24h, characteristic of ORC. Pucallpa has had a great electricity problem for several years. When I was there in Sept 1985, there was elec only at 5:30-8 am and 6 pm-midnight local. Factories, offices, stores and other businesses which needed constant electrical supply during the day, 10 hours or so, had to equip themselves with private generator. There are some stns which matched their airtime with public electricity supply. Fortunately for RNM, they have generators both at studio and xmtr site, so can go on w/out interruption, but due to high cost restricted sked to 10-05 UTC. But during monitoring in Dec 88, hrd 0630-12 UTC almost daily so they are now over-night-ing. MW xmtr is German brand Willkinson, model AM3000B, w/quarter wave ver-tical. So far I have no info on new SW xmtr.

5930.6, R Imperio, via R Los Andes, Huamachuco, 1000-1008, F, 3/11, pgm Cantares de Mi Pueblo hrd again; ID OAX2U, 1030 OM...R Imperio...

5618.2, R Ilucan, Cutervo, \*1114-1123, G-F 27/11. Began morn xmsn w/pgm Cutervino Ausente, on this Sunday, for locals in different parts of the coun-try, w/msgs, folk mx of Cutervo; ex-5617.8 kHz. Now working on authorized MW fq 1470 Mon-Sat; and every Sunday they go on SW to reach listeners outside the city (Takayuki Inoue Nozaki, Tokio, Japan, Relampago DX, Dec)

PHILIPPINES R Veritas Asia, 1428-1630 on 15460 which is not ancd. Ancd fqs are 15465 and 15220, where nothing hrd. In Bengali until 1500, EG 15-1530, Urdu 1530-16, then CCI from R France Intl in FR, but RVA still in background.. w/wnk lang. Ancd fq for 0130 EG as 15275 & 15365, 31/12 & 1/1 (Roland Schul-ze, Stuttgart, W Germany)

POLAND R Polonia, in EG: 0630-07 Eu 15120 7270 6135. 12-1225 Eu 7285 6095. 1230-13 Af 15120 11840 9525. 14-1430 Eu 7285 6095. 16-1630 Eu 9540 6135. 1630-17 Af 11840 9525 7125. 1830-19 Af 11840 9525 7125. 1830-1855 Eu 7285 6135 5995 1503. 20-2030 Af 9525 7145 7125. 2230-23 Eu 7270 7125 6135 5995 1503. 2305-2355 Eu 7270 7145 7125 6135 5995 1503 1260 1206 738.

Esperanto: 05-06 Eu 7270 6135 5995 1503. 11-1125 Eu 9525 7145. 1530-1555 Eu 7285 6095. 1630-1655 Eu 7285 6095. 2130-2155 Eu 7285 6095 5995 1503.

Total out put: 296.55 hpw, of which 89.50 is Polish, 39.05 EG, 30.20 GM, 29.10 FR (WBI 23/12)

SWITZERLAND Swiss R Intl, to Eu in EG: one hour earlier in summer. 0730-08 9535 6165 3985. 13-1330 12030 9535 6165. 1830-19 9535 6165 3985. 2230-23 6190. To outside Eu, same time yearound: 02-0230 Am 17730=Brasilia 12035 9885 9725 6135 6095. 04-0430 Am 12035 9885 9725 6135. 0630-07 Af 17570 15430 12030. 0830-09 Au 21695 17830 13685 9560. 10-1030 Au 21695 17830 13685 9560. 11-1130 As 17830 15570 13635 11935. 1330-14 As 21695 17830 15570 15135=China 13635 11695=China. 1530-16 ME/Af 21630 17830 15430 13685. 1830-19 Af 11955 9885. 21-2130 Af 15570 13635 9885.

Esperanto: 1330-1345 Mon/Thu/Sat (one hour earlier summer) Eu 9535 6165 3985. Elsewhere, same fqs as following EG, Sun/Thu 0115-0130, 0315-0330; Wed/Sat 0745-08, 1045-11, 1315-1330, 1515-1530. Also Wed/Sat 1715-1730 ME/Af on 17830 15430 15525 11955 9885. 2215-2230 Am 12035=Gabon 9885 9810 5965.

Red Cross Bcing Service, Geneva, week of 26 Feb to 2 Mar, EG Mon/Thu 0740-0757, 1040-1057, 1310-1327, Tue/Fri 0310-0327 on corresponding fqs. Also Sun 11-1130 & Mon 17-1730 on 7210; mixed w/FR 1710-1727 Mon/Thu.

SRI total output to all areas except Eu: 166.15 hpw, led by EG 35.00, FR & IT 32.15 each, GM 30.15 (WBI 23/12)

TURKEY Gunaydin, Istanbul, reported 8/12 from Ankara: US will set up two radio stns in Van /eastern Turkey/, to bc to Armenia and Azerbaijan in their local langs. A high ranking offl at the US embassy confirmed that bcs were /already?? on MW??/ being beamed to Az & Arm via Turkey, via boosting and relay stns. US & SU agreed in talx discussing stability in conventional arms & achieving disarmament in Eu, that W bcs in Eu should not be obstructed. On the basis of this agmt, US approached Turkish offls on question of being to republics in Caucasus. Re talx being held in Vienna, US offl said question of radio stns to be set up in Van was taken up from 'point of view of human rights' and asserted that Turkey's position will be clarified at meetings during coming days (WBI 23/12)

U A E V of the UAE sometimes IDs in EG as UAE Radio from Abu Dhabi. DS in AR is beamed to other areas on SW: As 02-06, Eu 06-2130, ME/NAF 13-2130. On occasions SW fqs may split to carry separate pgms at various times. V of UAE DS from Abu Dhabi in AR: \*0215 on 21515 17705 15395. 04 21715 17820 17705. 06 change to 21735 17820 17705 15135. 13 to 21735 17820 17705 17645. 16-2130 on 11965 11815 9780 7280, all plus MW.

V of UAE ES from Abu Dhabi to Am: AR 00-02 on 11965 9597 6170, EG 22-24 on same, including 2220-2230 press review; 2230-23 relay of Capital R, local EG svc. MW fqs carrying V of UAE from Abu Dhabi for part or all of xmsn period: 1575 Sharjah 50 kW. 1539 Sadiyat 50. 1314 Dabiya 1000. 972 Fujairah 50. 810 Maqtaa 50. 729 Sadiyat 750. 657 Sadiyat 50 (WBI 23/12)

U K O G B A N I Letter accompanying QSL just rcvd 7/1 from UK free radio stn R Orion says stn is "conducting tests to the USA on 6290 from 0630 UTC" and "listen for us 6290 Sunday (and Sat), 6290 0630-07 UTC" (sic). Addr is PO Box 1280, Rednal, Birmingham B45 8SQ, England (Gregg Bares, Watertown CT)

U S A Last Minute Info  
U S S R R Moscow Intl in SP reported 15/12: RMI has begun bcing pgms in Catalan and Basque for Spain, twice each month. Catalan on the 15th of each month at 2220, Basque on the 18th at same time. The 22-23 bc in Spanish is hrd on 9785 7370 7185 5960.

R Moscow Swedish svc ancd 3/12: RM is prepared to cooperate w/Swedish local radio stns and offers them its pgms for xmsn in Sweden--what's happen--ing in SU, recordings of Sov concert mx, etc. Phone 2336786, 2336843, 2336067. RM is prepared to offer free a series of pgms abt Georgia, the Union republic which reps SU at its Cultural Days in Sweden thisyear.

RM GB&I svc in EG reported 18/12: EG lang svcsof RM plan to intro ads in their pgms. This pgm New Market already promotes business contax betw Sov & forn companies, ads Soviet goods. But now plan extend such. Latest audience research reveals that RM bcs have lately attracted millions of new listeners. So if you're interested in possibility of using this medium as an extension of your ad capabilities, you're welcome to do so on favourable terms. Thru us they can also contact our home svc, which can ad your products, services on Soviet internal market. Write New Market, EG-Lang svcs, R Moscow, Moscow, the USSR. /so they are even inviting ads from outside the SU??/

R Moscow in Italian 2000 16/12 ran commercial, w/sound of car brakes screeching hrd thruout item; for an electronic device that calculates distance and time for stopping, to prevent collisions. Info by writing to RM Ital svc, Ulitsa Pyatnitskaya 25, Moscow.

ching hrd thruout item; for an electronic device that calculates distance and time for stopping, to prevent collisions. Info by writing to RM Ital svc, Ulitsa Pyatnitskaya 25, Moscow.

R Moscow in PT For Af reported 19/12: From 1/1, morn xmsn will cease. First eve pgm will be brought forward by 30 mins, starting at 1800, and extended to 60 mins. On 11670 12030 9730 9800 0880. 2nd xmsn as usual at 20 on 31, 41m. (WBI 23/12)

R Moscow to GB & Ireland: 20-21 on 9765 7170 7150 7115 6030. RMWS in EG was monitored in December:

0000: 17890, 17655, 17570, 15295, 7370  
0100: 17890, 17825, 17655, 17570, 15295, 12045, 12010, 7370  
0200: 17890, 17825, 17655, 17590, 15420, 12045, 12010, 7370  
0300: 17890, 17825, 9880  
0400: 17890, 17825, 9880, 9765, 7370, 7310, 7215, 7165, 6175, 6000  
0500: 9765, 7370, 7310, 7215, 7165  
0600: 11785, 9450, 7370, 7310, 7225, 7195, 7165  
0700, 0800, 0900: not heard  
1000: 9875, 9705, 6000  
1100: 15475, 15225, 9875, 9705, 6000  
1200: 21800, 17820, 17810, 17700, 17645, 17565, 15595, 15540, 15530, 15500, 15490, 15475, 15470, 15465, 15420, 15350, 15320, 15225, 15150, 11900, 9875, 9705  
1300: 17840, 17810, 17645, 15595, 15560, 15540, 15530, 15475, 15470, 15465, 15350, 15225, 11840, 9705, 7370, 7305, 6050  
1400: 21680, 17820, 17810, 17665, 15595, 15560, 15540, 15475, 15470, 15225, 11840, 11705, 9705, 7345, 6095, 5905  
1500: 17810, 17665, 15560, 15540, 15475, 11840, 11745, 11705, 7345, 6095, 5980, 5905  
1600: 15475, 11840, 9875, 9825  
1700: 11840, 9875, 9825  
1800: 15470, 11840, 9875, 9825, 9540, 7150  
1900: 11840, 9875, 9825, 9765, 7325, 7150,  
2000: 11840, 9875, 9825  
2100: 17720, 17605, 15425, 12050, 11840, 9875, 9765, 7290, 7150, 5980, 5905  
2200: 17720, 17700, 17605, 15425, 12050, 7230, 7170, 7150, 7115, 7105, 6115, 6055, 6045, 5980, 4860  
2300: 17655, 17570, 15295, 9790  
(Christos Rigas, Chicago IL, 3/1)

UZBEKISTAN Uzbek R First Pgm, Tashkent, on 5995 at 2355-1800; during summer time all pgms one hour earlier. When not carrying local pgms, relays All-Union R, Orbita-4 in Russian. Pgms include: 0015-0020 anthem and opening amts. 0020-0030 nx in UZ, 0130-0140 nx in RS; 0415-0420 Tue/Thu press review in Crimean Tatar; Sat 0515-0530 same. 13-1325 nx in UZ/RS. 1415-1445 Wed Concert in Crimean Tatar.

Second pgm, Mash-al, meaning Torch is similar in format to AUR's Mayak; also relays R Orbita 4 at times. On 4850 at 2355-2200. Pgms include Concert in C-T at 0705-0730. Pgm from Andizhan at 0830-09. nx in Kazakh 1320-1330. Unconfirmed nx in Tajik at 14-1410 Mon-Sat. Atheist talk in C-T Mon 15-1530, Concert in C-T Fri 15-1530.

Fergana Oblast Radio, 4510 has localpgms in UZ/RS M-F 0830-09 and 1230-13. (WBI 23/12)

VENEZUELA R Mundial, Caracas, reactivated on 5049.1, 0920-1010 P 25/11. Venez mx, exact time; 0930 lottery numbers. 0958 ID and NA. SW had been silent, YVKD-5050 was 2 kW. Don't confuse with Emisoras Jesus del Gran Poder on 5049.9 or R LV del Yopal on 5050.0, or R Municipal de Cangallo on 5050.1 (Takayuki Inoue Nozaki, Tokio, Japan, Relampago DX, Dec)

C L A N D E S T I N E C R A N N Y R Caiman, 9960.0 /since changed to 9965/, 0415-0503\* VG 27/11, Fiesta en el Aire pgm w/super-danceable mx, 0500 s/off, said pgm was weekly (Takayuki Inoue, ibid.)

R Patria Libre during 0030 xmsn 12/12, anti-Colombian govt stn ancd dedicating pgms to sister stn R Venceremos, FMLN; played RV themesong, ID (WBI 23/12) 6760

La Voz de la Libertad AFP reported 21/12 from Panama City: This opposition clandestine, resumed because this week w/statements against Gen Manuel Antonio Noriega. A Commander Candelo of the guerrilla group Hugo Spadafora Liberation Front today called on Pan Def Forces officers to disregard orders of their commanders and turn against Noriega. Stn IDs as "an alternative for freedom of the press" in light of closure, since Feb of 7 opposition stns and newspapers charged w/acting against the state's domestic security. Ankr said today that former Col Eduardo Herrera Hassan, opposition legislator Omaira Mayin Correa, oppo leader Gabriel Lewis Galindo and Alberto Conte, son of Pan businessman arrested 22/9, will speak during Wed's bc. Herrera is former Pan ambassador to Israel, removed from office earlier this year after being charged w/leading subversive groups financed by the US. LV de la Lib first hrd in Mar 1988 and resumed w/15-min bc today 20/12 at 1730 gmt. Earlier this year, Pan govt charged the LVL ops w/help of Southern Command Net, a US Armed Forces bcng stn in Panama (WBI 23/12) No fq here; was FM 89.1 previously

R Iran 1830-1925 xmsn erroneously on 9000 kHz 6/11 //7075; however back to 9400 on 14/11 (Tetsuya Kondo, Yokohama, Japan, 15/11)

NORTH AMERICAN PIRATES Falling Star R 6240, 0527-0543 18/12, SIO 333, lengthy discussion on RNI. Mx by Kansas and Joe Walsh. From the FSR name, should we assume this is related to R Newyork Intl, KPF-941, and the whole Weiner gang? (A Yoder, PA)

WENJ, 6250, \*2000-2006\* 18/12; 6240 \*2032-2100\* 24/12; 6240 2320-0205\* 24-25/12. 7415 \*2022-2133\* 25/12; 7415 2052-2134+ 1/1. Very active lately. This was on AM 1630, but just reconditioned a ham xmtr. OM Jack Beane takes calls thru answering machines in NJ and QSLs via those calls. VG sigs and audio here in western PA. Mx is pretty barfy--lite pop hits from 50s and 60s, but pgms usually interesting (A Yoder, PA)

WJDI, 1620 kHz, 0508-0514\* 2/1, 1620 at 0612-0636\* 7/1, SIO 454. "The Voice of NY State", lotsa IDs, dead air, lite pop mx. Sez "1000 clear watts of power". From sig reports across EC NAM, seems like it may be true. Cambridge WI addr (A Yoder, PA)

WKND, on 1620 kHz, \*0638-0800\* 7/1, SIO 222 to 344. Finally a pirate w/alternative rock mx! Mostly 60s garage rock. Hardly knew any mx (stn didn't ID it) but hrd "Psychotic Reaxion" by Count V at 0644. Wish OM wud talk more--usually only sez "This is WKND, weekend commercial-free radio" (Please QSL to A. Yoder, 3007R 4th Ave, Beaver Falls PA 15010)

L A S T M I N U T E I N F O COSTA RICA Radio for Peace International has begun 'informal' weekend broadcasts, Sat & Sun 1800-2400 on 21560. WORLD OF RADIO was included Sat 21/1 around 2130, not a time we would have picked since it conflicts with several other DX programs (gh) And on Sunday 22/1, WORLD OF RADIO was carried at 1830 and 2200 (not 2130 as you might expect) on 21560. It was the one missed by WRNO, #474. I hope they continue this Sunday broadcasting (Tim Hendel, Miami FL)

U S A While we're at it, I may as well give the current WORLD OF RADIO schedule on WRNO: Thursdays (sometimes) at 1630 on 15420; UTC Fridays (reliably) 0000 on 7355 (the 0130 repeat seems dropped; original purpose was to be on two different frequencies); UTC Saturdays 0400 (usually a good bit later) on 6185; UTC Sundays 0030 (reliably, after La Voix de la Louisiane, Cajun music show at 0000) on 7355; UTC Sundays 2130 on 15420 (unless bumped by a ballgame; if after 0000, back on 7355) (gh)

P U B L I C A T I O N S Read much more about SW & DX in REVIEW OF INTERNATIONAL BROADCASTING and/or DX LISTENING DIGEST. In North America, samples are \$2 each, 10-issue subscriptions \$21 each, or both for \$40, from Glenn Hauser, Box 1684, Enid OK 73702.

THAT'S ALL? We've actually done this edition from Austin, Texas, and the mail forwarding has been atrocious so far--only one WBI made it by deadline. We should be here at least thru Feb, so you may mail to: Box 4254, Austin TX 78765.

# QSLs

Send your reports to: Sam Barto, NASWA QSL Editor  
47 Prospect Place  
Bristol, CT 06010 USA.

**ALASKA:** KNLS 6150 f/d cd. in 29 ds. (Darling-PNG).

**ALBANTA:** Radio Tirana 7065 p/d "Museum of Natural History" cd. w/ schedule and pin in 49 ds. (George-NC). cd. in 92 ds. w/ schedule. (Turnick-PA).

**ARGENTINA:** LOL 5000 p/d folder cd. w/ station information in SP/EG in 101 ds. for a SP rpt. v/s Ernesto Emilio Faccini, Capitan de Corbeta. (George-NC).

**ASCENSION ISLAND:** BEC 11820 f/d cd. w/ personal ltr. in SP in 1 mo. (Renfrew-NY).

**ASIATIC RUSSIA:** Radio Moscow 17860 via Chita f/d cd. in 2 mo. (Allen-OK). f/d "Rowing Canal in Krylatskoye" cd. in 63 ds. (Weber-OH). f/d cd. in 36 ds. (Darling-PNG). 15260 and 17860 f/d cd. in 50 ds. (Renfrew-NY). 15455 via Petropavlovsk f/d cd. in 40 ds. (renfrew). 13645 and 15180 via Komomolsk f/d cd. in 40 ds. (Renfrew). 9530 via Kenga f/d cd. in 40 ds. (Renfrew). 17570 and 17850 via Khabarovsk f/d "Byelorussian Railway" cd. in 54 ds. (D'Angelo-PA). 17850 f/d cd. in 36 ds. (Darling). 17570 f/d cd. in 55 ds. (Darling-PNG). 17880 via Irkutsk f/d cd. in 63 ds. (Weber-OH). f/d cd. in 55 ds. (Darling). 17675 f/d cd. in 55 ds. (Darling-PNG). 17880 and 17675 f/d "Railway" cd. in 54 ds. Report \* form was utilized. (D'Angelo-PA). RID 10004 and 15004 p/d ltr. in 3 mo. w/ booklet and schedule. v/s Yu. I. Bregadze, Deputy General Director. (Barto)

## Certificado de Sintonia

Radiofueras: Radio "LOS ANDES" OAZZA.  
Transmisor de: Huamachuco, PERU.  
Frecuencia de: 5.330 KHz. Onda corta Banda 80 m.  
Potencia: 5.000 vatios  
Hora, fecha: 10-10-88 - HORA 5.36 A.M.

Notas comprobada sus detalles de recepción y confirmamos la sintonía a nuestra emisora. Atta.



*Signature*

5000 via Llandilo folder w/ ltr. in 11 ds. for 1 IRC. Personal ltr. was rcvd. from Dr. Marion Leiba, VNG Users Consortium, 26 Fimister Circuit, Kambah, ACT 2902. (Darling-PNG).  
**AZERBAIJAN SSR:** Radio Moscow 15260 via Baku f/d "Dzerzhinsky Square" cd. in 2½ mo. (Wallace-MA). same in 40 ds. (Renfrew-NY). f/d "Rowing Canal" cd. in 52 ds. (Weber-OH). f/d cd. in 2 mo. (Allen-OK).

**BALI:** RRI Singaraja f/d prepared cd. w/ personal ltr. in 1 mo. for ms. on my 3rd try. Thx \* to Reinstein's Kontak Pendengar for the v/s - Ketut Aswin, Kepala. (Sams)...3398 Freq.

**BELIZE:** Belize Radio One 3285 f/d "Map" cd. in 6 wks. after a f/up rpt. for \$1.00. (Sams).

**BOLIVIA:** Radio Nueva America 4795 p/d ltr. w/ postcards and sticker via registered mail in 29 ds. for a SP rpt. and ms. v/s Elvira Llosa de Salmon, Directora. (Rugg-QUE). ltr. w/ pennant and postcard in 171 ds. for a SP rpt. ms and \$1.00. (Archer-NC). Radio Santa Cruz CP32 6135 f/d prepared cd. in 28 ds. for a SP rpt. and \$1.00. (D'Angelo-PA). f/d prepared cd. w/ pennant in 29 ds. for a SP rpt. and ms. v/s Alvaro Puente C., Director. (Archer-NC).

*usual transmitter 100w jack russel in his studio*

QSL 'THE VOICE' OF SCOTLAND QSL

*WEEBEN'S MUSIC RADIO*

WMR confirmation of reception /qso:

*To: 2014 2270*  
*Date: 21.10.88*  
*Time: 2014 2000 UTC*  
*Freq: 15044-56 kHz*  
*Power: con*  
*Signed: Jack Russel*  
*42 axon close cambridge england*

*Weekend Music Radio*  
*Scotlands Only SW*  
*Rate*



**AUSTRALIA:** Radio Australia 21740 via Shepparton cd. in 34 ds. (Darling-PNG). 9580 f/d "Platypus" cd. in 2½ mo. (Huniwell-NJ). 17750 via Darwin "Bi-Centennial Special QSL" cd. in 245 ds. (Darling). 21525 cd. in 36 ds. (Darling). VLM15 15425 f/d cd. w/ ltr. in \* 100 ds. (Renfrew). same in 2 mo. (Huniwell-NJ). VNG

**BOGANVILLE:** Radio North Solomons 3325 f/d ltr. in 4 mo. for ms. v/s Sam Sawa. (Atkins-AL).

**BRASIL:** VOA Brasilia 15385 & 17885 p/d cd. in 4 mo. (Barto-CT). Radio Nacional Porto Velho 4845 p/d postcard in 3 mo. for a PT rpt. (Huniwell-NJ). Radio-Bras 11745 f/d cd. in 171 ds. w/ sticker for \$1.00. (Turnick-PA).

**BULGARIA:** Radio Sofia 11720 f/d cd. in 187 ds. after a f/up rpt. (Hazzard-PA).



NATIONAL  
BROADCASTING  
COMMISSION OF PAPUA NEW GUINEA

Form 611248 Color

Radio Hiline Bay  
P.O. Box 111  
AUSTIN, MSP  
28.9.88

Mr. Donald Weber

Mr. Ronald Archer,  
5524 Hawthorne Park,  
Kalamazoo,  
MI 49001,  
UNITED STATES OF AMERICA.

Dear Mr. Archer,

Many thanks to you for your letter of 10th September, 1988 indicating the reception and the frequency strength of my Station, Radio Hiline Bay.

Your report was checked and verified as correct as well as the frequency which is 3265 kHz.

I don't have any of my Station's own verification cards, but as you've mentioned, this letter will surely verify your letter with our programme as was broadcast on the 10th September, 1988 here at Radio Hiline Bay.

You will notice that the Verification card you sent to me, has got a drawing of Radio Hiline Bay Cross.

Hope you will like it.

The Staff of this Station wish you best of luck in your future listening.

*[Signature]*  
W.D. ELLEN  
STATION MANAGER RHB

BYELORUSSIAN SSR: Radio Moscow 11960 via Orsha f/d "Poster" cd. in 59 ds. (Weber-OH).

BURKINA FASO: Radio Burkina 4815 p/d form ltr. in 3 mo. for a FR rpt. (Moore).

CANADA: Calgary 88 Special Olympics Station VX6000 award rcvd. in 10 mo. (Witte-CA). Amateur station but I haven't heard from Marge in several months so I thought I'd put it in...Sam.

CAPE VERDE: Radio Nacional de Cabo Verde 3931 f/d ltr. w/ station brochure in 5 wks. after a f/up rpt in PT for \$1.00. v/s Carlos Gonçalves, Director. (Sams).

CELEBES: RRI Manado 3215 p/d ltr. in 7 wks. via registered mail for an IN rpt., ms. v/s Daniel Narande, Kepala Stasiun. (Atkins-AL).

CHINA, PEOPLES REPUBLIC OF: Voice of Jinling 4875 f/d prepared cd. in 29 ds. Also rcvd. XMAS cd. in Chinese! (Kusalik-ALB). Yunnan PBS 4760 f/d cd. w/ tissue cut outs, map of Provinces and an XMAS cd., schedule and sticker in 1 mo. for \$1.00. (Robinson-IL).

CLANDESTINE: Flag of Freedom Radio 15555 p/d ltr. \* w/ schedule and station information in 606 ds. for 1 IRC. Reported to the Denmark address while reply was received from France. (Darling).

VERIFICATION SIGNERS: Radio Frecuencia San Ignacio 5700 Franklin Hoyos Condor, Director. Radiodifusora Mamore 4740 Lucio Montan E., Director Proprietario. Radio Meteorologia Paulista 4845 Roque de Rosa, Station Manager. Radio Liberal 3325 Carlos Antonio do Rosario. Radio Guatapuri 4815 Gustavo Cuello Diaz, Jefe de Programacion. La Voz de la Mosquitia Sammy Simpson. RRI Banda Aceh 3905 Rodakim S. H. Kassabag Tata Usama. RRI Serui 4607 Drs. Jasran Abubakar. XENIX Radio Mexico International 17765 LiC. Beatriz Villa Medina Garcia, Gerente. Radio New Zealand International 15150 Rudi Hill. Radio Waira 4700 Eladio Cusma Gonzales, Administrador. Radio Universo 6815 Miguel Lozano Tantalean, Director. Radio Rwanda 3330 Fidele Nkulikyumukiza, Chief Section of Documentation and Censure. BSF 15000 Teng Yuan-Cheng, Chief Research Engineer - Frequency and Time Section. Radio Maracaibo 4860 Maximo Flores Velazquez, Director General. La Voix du Zaire 15245 Ayimpam Muan-A-Ngo, Directeur des Programmes Radio...PLAY-DX.

Q S L

Certificado de Sintonia

Emisora RADIO EL SALVADOR

A Sr. Kirk E. Allen

Muchas gracias por su informe de recepción. Tenemos el gusto de confirmar su control de nuestra emisión en 9.587 kHz. de fecha 7 de octubre de 1984 a las 19.23-19.57 horas de San Salvador con varios de potencia.

RADIO  
EL SALVADOR  
YSSS  
San Salvador  
El Salvador, C.A.

*[Signature]*  
firma y sello oficial

CLANDESTINE: Flag of Freedom Radio 9035 n/d ltr. in

- \* 1 yr. for \$1.00. v/s Dr. Manouchehr Ganji, Secretary General. (Kusalik-ALB). Radio Liberation 5929.3 p/d personal ltr. in 3 wks. for \$1.00. v/s Alvaro Icaza Vargas. (Palmerheim-MN). Voice of the Khmer 6325 paper cd. w/ station information in 180 ds. for an SASE from the Thai address. Two addresses given: c/o FUNCIPPEC Office, P.O. Box 12-1014, Suan Phlue, Bangkok, Thailand or c/o KPNLF Office, P.O. Box 22-25 Ramindra Post Office, Bangkok, Thailand. (Darling-PNG).

COLOMBIA: Radio Nueva Vida 5567.1 f/d prepared cd. w/ personal ltr. in 4 mo. for a SP rpt. and ms. v/s Marco Antonio Calcedo O., Director. (Palmerheim-MN). Radio Guatapuri HJHG 4815 f/d prepared cd. w/ personal ltr. in 207 ds. v/s Gustavo Cuello Diaz, Jefe de Programacion. (D'Angelo-PA). La Voz Centauros 5955 n/d cd. in 80 ds. after several tries. (Moore).

COSTA RICA: Radio For Peace International 21555 f/d "Logo" cd. in 9 wks. for 1 IRC. v/s David Latham. (Wallace-MA). form ltr. w/ cd. in 80 ds. for 2 IRCS. Station data and schedule rcvd. (Brouillette-IL). 13660 f/d form ltr. w/ cd. and schedule in 3 mo. for ms. (Moore-OH).



via Donald Weber

**AFRICA N°1**





RADIO REPUBLIK INDONESIA  
VERIFICATION CARD

Dear Mr. Samuel J. Barto,.....  
This is to verify your report dated 5 September 1988  
on our programme broadcast on the frequency of 9390 KHz  
Thank for listening.

DIRESKTORAT RRI Sincere  
R. N. M. Sincere  
JAKARTTA  
SPECIALIST INFORMATION Manager

PROGRAMME	FREQUENCIES	22.00-01.00		06.00-08.00		10.00-17.00	
		IQ.MT	X	IQ.MT	X	IQ.MT	X
National	11.880 KHz	X	X	X	XX		
	11.770 KHz	X	X	X	XX		
	8.660 KHz	X	X	X	XX		
	7.270 KHz	X	X	X	XX		
	6.048 KHz	X	-	X	X		
	4.775 KHz	X	-	X	X		
	3.277 KHz	X	-	X	X		
	999 KHz	X	-	X	X		
	100 MHz	X	X	X	X		
	104 MHz	X	X	X	X		
Metropolitan	109 MHz	X	X	X	X		
	1.218 KHz	XXX	XXX	XXX	XXX		
	1.322 KHz	XXX	XXX	XXX	XXX		
	103 MHz	XXX	XXX	XXX	XXX		
	83 MHz	XXX	XXX	XXX	XXX		

**GERMAN DEMOCRATIC REPUBLIC:** Radio Berlin International 13610 via Leipzig and 11810 via Konigs Wusterhausen f/d cd. w/o sites in 2 mo. (Barto-CT).

**GERMANY, FEDERAL REPUBLIC OF:** Sudwestfunk 7265 f/d "Globe" cd. w/ stickers in 115 ds. (Weber-OH). Radio Liberty 15370 via Holzkirchen p/d "Map of Europe" cd. in 12 ds. for ms. (Brouillette-IL).

**GREECE:** Voice of Greece 9420 f/d "Apollo and Marsyas Music Contest" cd. in 1 mo. (Stuart-OK). Radiofonikos Makedonias 11595 f/d "Knossos" cd. in 83 ds. for 1 IRC. v/s Prof. A. Dermania. (Moore).

**GUAM:** KSDA 11980 f/d "Photo" cd. w/ schedule in 105 ds. for 1 IRC. Report was sent to the Hong Kong address but reply arrived via Guam. (Moore).

**GUATEMALA:** Radio Tezulutlan TGIZ 4835 f/d cd. w/ form ltr. in 89 ds. for a SP rpt. and \$1.00. v/s Carlos Arnoldo Wilhelm, Director Ejecutivo. (D'Angelo-PA). p/d cd. in 28 ds. w/ personal ltr. for a SP rpt. (Rubin-NY). p/d cd. in 1 mo. w/ ltr. for a SP rpt. (Huniwell-NJ). Radio Chortis 3380 p/d form ltr. in 62 ds. for a SP rpt. and ms. v/s Juan Maria Bokus, Director Ejecutivo. (D'Angelo-PA).

**GUYANA:** GBC 5950 p/d personal ltr. in 112 ds. after a

f/up rpt. w/ ms. v/s Roy Marshall, Technician. (Willis-KY).

**HONG KONG:** Radio Television Hong Kong 7290 f/d "Hong Kong Harbour" cd. in 25 ds. for 2 IRCs. (Kusalik-ALB).

**HUNGARY:** Radio Budapest 9835 f/d cd. in 45 ds. (Turnick-PA). Kossuth Radio - Program 1 \* 6025 f/d "Matthais Church" cd. w/ pins, decals, pennants and schedule in 7 mo. (Kusalik).

**INDIA:** All India Radio f/d "Temple" cd. in 9 wks. (Huniwell-NJ).

**INTERNATIONAL WATERS:** Radio New York International

\* 6240 f/d ltr. in 2 wks. for ms. v/s Allan H. Weiner. (Palmerheim-MN).

**IRELAND:** Radio Fax 6205 f/d cd. w/ info sheet in 1 mo. \* for \$1.00 (Moore-OH). f/d large cd. in 2 wks. for \$1.00. (Palmerheim-MN).

**ISRAEL:** Kol Israel 21660 and 15650 cd. in 47 ds. (Darling-PNG). 7460 f/d cd. w/ schedule in 33 ds. (Becker-NY).

**JAPAN:** Radio Japan 9635, 15195 and 9505 n/d "Cranes in Hokkaido" cd. in 2 mo. (Barto-CT). 21640 and 17825 n/d "Cherry Blossoms over Former Samurai Barracks

\* in Fukuoka" cd. in 3 mo. (Barto-CT). Kumamoto Broadcasting Station 6130 f/d prepared cd. w/ personal ltr. in 2 wks. after a f/up rpt. Schedule and postcards rcvd. v/s Sadaharu Okada, Broadcasting Engineer. (Kusalik-ALB).

**JAVA:** RRI Bengkulu 3265 p/d ltr. in 1 mo. for an IN

\* rpt. and ms. v/s H. Hamdan Syabeni, Kepala. (Sams).

RRI Jakarta 3277 f/d "RRI" cd. in 5 wks. for an IN rpt. This was after a f/up rpt. via registered mail. v/s Drs. R. Baskara. Thanks to Wilkins for v/s. (Sams). 11865 p/d cd. in 7 wks. for an EG rpt. and 2 IRCs. via registered mail. (Eckert-PA). RRI Yogyakarta

\* 5046 n/d personal ltr. in EG in 1 mo. after a f/up rpt. in IN. v/s Tomo. (Sams). RKIP Surabaya 4700 f/d cd. in EG in 1 mo. for an IN rpt. and ms. v/s NY. Koentjarjadi. Her

Dear Mr. Barto,

Thank you for your letter regarding the reception of the transmission from the RRI radiostation belonging to the National Time and Frequency Service of the USSR. This is to confirm the RRI transmission at the time you indicated in the letter.

As to the RRI radiostation please note that from 12<sup>h</sup> 47<sup>m</sup> UT it transmitted signals of NON type.

Enclosed we are sending you the Bulletin B 07/1988 in which the characteristic and broadcasting schedule for standard frequency and time signals via the USSR radiostations are given.

Sincerely yours,

Yu. I. Bregadze  
Deputy General Director  
NPO VNIIFTRI

A: EDUARDO RUBIN

Tenemos el gusto en verificar su reporte de nuestra transmisión.

Fecha 1 DE NOVIEMBRE 88  
a las ----- horas, en 4835 KHz  
Mhz.

Muchas gracias por la información; agradeceremos siempre sus futuras reportes y comentarios de nuestra programación.

Mucho DX y 73.

Sinceramente,

RADIO TEZULUTLAN

name has appeared elsewhere spelled slightly differently. (Sams) RRI Bandung 3204 p/d ltr. in 5 wks. for an IN rpt. and ms. Postcards rcvd. v/s Eem Suhaemi, Kepala seksi Siaran. (Sams).

**KOREA, DEMOCRATIC PEOPLES REPUBLIC:** Radio Pyongyang 11735 f/d cd. in 85 ds. (Turnick-PA).

**KOREA, REPUBLIC OF:** Radio Korea 15505 f/d "Olympic" cd. in 36 ds. w/ sticker and pennant. (Turnick-PA).

\* f/d cd. in 1 mo. (Witte-CA). KBS Suwon 3930 cd. in 32 ds. (Darling).

**LATVIAN SSR:** Radio Riga 5935 f/d cd. w/ schedule in 56 ds. after a f/up rpt. (Rugg-QUE).

**LESOTHO:** INBS 4800 f/d "Flag" cd. in 242 ds. for 1 IRC. (MacHarg). f/d cd. in 5 mo. for 2 IRCs. (Moore).

QSL Verification  
 Radi Republik Indonesia Manokwari  
 Kapada Yk. Tuan Rowland Archer  
 Ini membawakan laporan lugu dari Radio Republik Indonesia  
 siaran pjdj gelombang 22.25 meter atas frekuensi 1987 MHz,  
 pada waktu 19.08 dari 29.58 sampai 20.31  
 waktu Indonesia Bagian Timur Pemasang buana studio  
 kami 1 kw. dengan Delta Mach antenna.  
 Banyak terima kasih untuk laporan tuas.



**MALI:** Radio Beijing 9770 f/d cd. in 18 ds. (Turnick-PG).  
**MALTA:** Voice of the Mediterranean 9765 cd. in 20 ds. for 1 IRC.  
 (Darling). f/d "Small Boats at Dock" cd. in 74 ds. for 2 IRCs.  
 (Weber-OH). f/d cd. in 44 ds. for 2 IRCs. (Archer-NC). **IBRA**  
**Radio 7110 f/d "CN Tower" cd. w/ sticker and pennant in 1 mo.**  
 v/s Kimberly Youngren. (Palmerheim-MN).

**MEXICO:** Radio Universidad XEQ 6045 f/d prepared cd. w/ ltr. in  
 32 ds. for a SP rpt. Also rcvd. 2 blue and gold pennants w/ decals. v/s Manuel Carrillo  
 Grageda, Director General (Kusalik-ALB). **Radio Universidad de Sonora XEUDS** 6115 f/d  
 prepared cd. in 95 ds. for a SP rpt. and ms. (Kusalik-ALB).  
**MONSERRAT:** Deutsche Welle 11705 cd. w/ ltr. and brochures rcvd. from Antilles Radio Cor-  
 \* poration. f/d verie was typed on a Radio Antilles QSL cd. Ltr. was signed by R. Tess-  
 arczck, Acting Chief Engineer and P. Ippendorf, Senior Engineer. This was in 66 ds.  
 for 1 IRC. (Darling-PNG).  
**PAKISTAN:** Radio Pakistan 15579.7, 7009.9, 15115 and 11570.1 p/d cd. w/ ltr. in 3 mo. (Bar-  
 to-CT). 5090 f/d cd. w/ ltr. in 26 ds. (D'Angelo-PA).

### INTERNATIONAL FREE RADIO

## WEEKEND MUSIC RADIO

MUSIC 7340kHz SUNDAY'S W-M-R

at Radio Nacional they told him to give them the rpt. and cd. It seems that Radio Nacional  
 sends a weekly courier to stop by government offices in Encarnacion and they  
 said they would deliver my rpt. directly to the station. I rcvd. the Encarnacion QSL  
 via registered mail just a week later. (Moore-OH).

**PAPUA NEW GUINEA:** Radio Simbu 3355 f/d ltr. in 5 1/2 mo. after 2 f/up rpts. w/ ms. v/s Fab-  
 ian Waim, Station Manager. (Allen-OK). **Radio Western** 3305 f/d "NBC Map" cd. in 60 ds.  
 for \$1.00. v/s Timothy Dickson. (Kusalik-ALB).

**PERU:** Radio Sensacion 6791 f/d prepared cd. w/ ltr. in 6 mo. for a f/up rpt. on an 86  
 \* reception. v/s Justo Emilio Carrasco Moreno,  
 Gerente. (Moore-OH). **Ondas del Huallaga**  
 3330 f/d stamped prepared cd. in 17 ds.  
 for a f/up on an 84 reception. SASE was  
 used. The response was dated just 5 ds.  
 after I mailed my rpt. v/s Flaviano Llanos  
 M., Representatne Legal. (Moore-OH).

**Radio Quillabamba** 5025 f/d prepared cd.  
 in 2 mo. for a SP rpt. and \$1.00. v/s  
 \* Francisco Panera. (Palmerheim-MN). **Radio**  
**Huancavelica** 4885 Rcvd. a friendly n/d ltr.  
 in 9 wks. for an 84 f/up rpt. v/s Carlos  
 Angeles Duran. He complimented me on having  
 found a wonderful wife and having taken an  
 extensive honeymoon trip through Peru. Also  
 rcvd. a passport size photo of the v/s, his  
 fathers business cd., a cassette of taped  
 station IDs, and a typed personal info sheet  
 w/ things like birthdays, birthplace, height,  
 for both him and his parents. He promised to  
 mail me 3 certificados de sintonia although  
 I only sent 1 rpt. Certainly this is one of  
 the more fascinating and personal QSLs I've

ever rcvd. (Moore-OH). **Radio Reina de la Selva**  
 3465.7 p/d ltr. in 2 mo. for a SP rpt. w/  
 mention of Henry Lazarus reception report.  
 (Barto-CT). **Radio Los Andes** 5030.5 f/d pre-  
 pared cd. w/ personal ltr, business cd., and  
 "Certificado de Sintonia" via registered mail  
 in 46 ds. for a SP rpt. v/s Pablo Cardenas  
 Valverde, Gerente General. (Archer-NC).

**PHILIPPINES:** VOA 17740 cd. in 32 ds. (Darling).  
 9660 f/d cd. in 32 ds. (Darling-PNG).

**LESSER SUNDAS:** RPKP Ende 2694 long p/d ltr. in  
 \* 5 wks. for ms. and several tentative rpts.  
 Also rcvd. tourist brochures in a home-made  
 envelope. v/s Thomas Keropong. (Sams).  
**LIBYA:** Radio Jamheriya 15450 ltr. in 44 ds.  
 for 1 IRC via Hamrun, Malta. v/s Mohamed  
 Sweidan, Director. (Darling-PNG).

**PARAGUAY:** Radio Nacional 9735 f/d pre-  
 pared cd. from v/s Carlos T. Mont-  
 aner which was picked up on personal  
 visit to station by friend visiting  
 Asuncion. I also gave him a rpt. &  
 prepared cd. for Radio Encarnacion  
 to mail for me. He mentioned that

### Cadena Radio-Difusora - Peruana "LOS ANDES" A Nivel Nacional

RADIO "LOS ANDES" S.A. S.R.L.  
 QSL 400 kHz QSL QSL  
 Radio de 500 Watts A.M.  
 La Estacion de ONDAS  
 DEL SUR PERUANO  
 Bellavista 381 CH. Hita - Sanchez Carrillo  
 La Libertad - Peru

RADIO "IMPERIO" S.A. S.R.L.  
 QSL 400 kHz QSL QSL  
 Radio de 500 Watts A.M. 5000 Watts  
 Cadenas de Radio  
 Chusquea de la Libertad, Peru al Océano, Norte  
 Bellavista 381 CH. Hita - Sanchez Carrillo  
 La Libertad - Peru

Buenos Aires, 20 Octubre de 1986.

Señor  
 Nombre Archer  
 5524 Inverhorne Park  
 Raleigh, NC 27613  
 U.S.A.

Estimado Radio-Oyente:

Le saludo muy cordialmente en nombre de  
 todo el personal que labora en Radio "LOS ANDES" "IMPERIO"  
 y al día y a la vez para dar contestación a su carta  
 donde nos dice que le habíamos enviado nuestra Buena Noche 10  
 y/o 20 y que nos satisface y alienta para seguir mejorando cada  
 día en "SERVICIO" "PROGRAMAS" "MANTENIMIENTO" "SISTEMAS" "COMUNICACIONES"  
 para que a Defase sea lo mejor como el de Ud.

En cuanto a la recepción que Ud. nos en-  
 via es buena y al coincidir con la programación de Radio Los  
 Andes, le dire que la programación empieza a las 4.00 de la ma-  
 ñana y finaliza a las 9.00 de la noche en nuestras Emisoras 10  
 y/o los Andes e Imperio trabajan 10 empleados cuatro locutores  
 y secretarías, un Discoteorista una Contadora, una Asistid de -  
 contabilidad y el Director Gerente y dueño de dichas Emisoras  
 Pablo Valverde Valverde para servirle. Nuestra programación -  
 se varía desde de varios programas como son: música folclor-  
 o, noticias, románticos, baladas etc. Nuestro distrito Huancayo  
 es por de ahora pero en muy bonito tiene palmas que ya  
 line y cuando son árboles muy fructíferos como son: melón, tomates  
 las nubes, aguacachuco, el cerro León entre otros, al Ud.  
 visito. Nuestro "PERU" (Peru) lo va a servir de visitar nuestro distrito  
 Huancayo que será bien recibido.

Ahí, le envío una QSL por haber sintoni-  
 zado nuestras Emisoras y la pure firmeza y el sello de nuestra  
 Emisora, ejale le sea útil los recibidos se nos han es-  
 perado por el momento.

Sin otro particular me despido de Ud.

Atentamente,  
 PABLO VALVERDE VALVERDE  
 Gerente - General

**RIO MUNI: Radio Nacional de Guinea**

**Equatorial** 5004 p/d "Radio Africa"  
cd. w/ ltr. in 10 ds. for ms.  
(Brouillette-IL).

**SCOTLAND: Weekend Music Radio** 15045 ltr.

in 28 ds. for \$1.00. v/s Jack Russel.  
Station stated that my rpt. was the only  
one from Canada. (Kusalik-ALB). 15044.6  
sticker, photo, ltr., w/ personal note  
to myself and Gregg Bares in 6 wks. Also  
sent extended schedule. (Barto-CT).

**SPAIN: Radio Exterior de Espana** f/d cd. in  
7 wks. (Huniwell-NJ).

**SOUTH AFRICA: Capital Radio** 3930 f/d form  
ltr. in 3 mo. for a f/up rpt. and 1 IRC.  
v/s H. Van Hoogstraten. (Moore-OH). **Radio**  
**RSA** 9580 f/d "Rhino" cd. in 34 ds. (Mac-  
Hard).

**SPANISH MOROCCO: Radio Medi Une** 9575 f/d cd.  
in 80 ds. for a FR rpt. (Willis-KY).

**SRI LANKA: Deutsche Welle** 21640 via **Trin-**  
**comalee** cd. w/ pennant in 96 ds. (Darling)  
f/d cd. in 20 ds. (Darling).

**SULAWESI: RRI Palu** 3960 2 page ltr. in 6 wks.

for an IN rpt. and ms. v/s Akson Bode, Pimpanan. This was after 3 f/up rpts. The v/s  
sings in a local kronggang band and he sent along a few photos of their live perform-  
ances. (Sams).

**SUMATRA: RRI Palembang** 4856 n/d ltr. w/ postcards in 3 wks. for an IN rpt. and ms. v/s  
Abdul Rochim. (Sams). **RRI Sibolga** 5256 ltr. in  
60 ds. for an IN rpt. for \$1.00. v/s B.A. Tan-  
jung. (Kusalik-ALB).

**RADIO LOS ANDES - 1.040**

TELEFONOS 637271 - 699206 - APARTADO 60 - MERIDA - VENEZUELA

Mérida, 7 de Noviembre de 1980

Señor  
Howland Archer  
Raleigh Usa.

Estimado señor Howland

Recibi su carta donde dice nos ha oido, gracias  
por escribirnos, radio los Andes está situada en la  
ciudad de Mérida en la cordillera de los Andes a una  
altitud de 1.800 metros sobre el nivel de mar y con  
una temperatura de 18 grados todo el año, con monta-  
ñas nevadas es una ciudad turística y estudiantil.

Muchas gracias por su carta

Atentamente:

Angel H Márquez.

**Q S L****Verification Card**

Station Radio West 5274  
To AKLONIA 8800

This is to confirm your reception of our transmission dated  
24 March 1981 1122 - 1200 hours UTC on a  
frequency of 3.258 MHz with \_\_\_\_\_ watts.

Details - you accept. Report was verified. Correct.  
Jan 1122 - 1200. you were listening to part of an International  
Programmed Card "Tango Swallow" - large program by various p.  
No particular PMS with  
from 1122 - 1200. 6.10. The next program of our transmission  
will start parallel by the station (main) but night  
gram longer.

Signature [Signature] Official Seal

35 ds. (Becker-NY). **KGFI** 15280 f/d cd. in 35 ds. for 1 IRC. Sticker and schedule  
rcvd w/ pamphlets. v/s Jesus C. Elizondo. (Machlag). (Palmerheim-MN).

**USA (Pirate): Radio Garbanzo** 7414 f/d "Nuts Hell, We're Beans" ltr. in 4 mo. for ms.

**VATICAN: Radio Vatican** 6150 f/d cd. in 79 ds. (Turnick-PA).

**VENEZUELA: YVTO** 6100 f/d cd. in 54 ds. for a SP rpt. and \$1.00. (Kremer-IN).

**VIETNAM: Cao Bang Regional Station** 6575 "VOV" cd. in 2 mo. via Hanoi. This was after a  
f/up rpt. (Sams).

**HALAWI BROADCASTING CORPORATION**

CHICHIRI HOUSE, BLANTYRE, MALAWI

P.O. Box 30113

CHICHIRI  
BLANTYRE

TELEGRAPHIC ADDRESS: RADHALAWI  
TELEPHONE: 611 412



Ref. No. PG/1340(20)

19th August 1980

Mr Howland Archer,  
5524 Hawthorne Park,  
Raleigh, NC 27612,  
UNITED STATES OF AMERICA.

Dear Sir,

Your reception report attached to your letter dated 28 July refers.

We have checked your details and have proved, beyond any reason-  
able doubt, that you did indeed listen to our broadcast. You  
were tuned to our early morning musical programme which features  
traditional music. The music as you pointed out in your report,  
is indeed accompanied by drums.

You may be interested to know that we are on the air nineteen  
hours a day Monday through Sunday.

Yours faithfully,

**WEST IRIAN: RRI Serui** 4607 p/d ltr. in  
37 ds. for an IN rpt. and ms. This  
after a f/up rpt. v/s Agus Raunsai.  
(Allen-OK).

I guess that it for yet another QSL  
Column. Quite a few great QSLs this  
time around.

Lets make next months even better.

[Signature]

The following list is a partial compilation of Central and South American SW stations which have verified listener's reports during the 1988 calendar year. Much of the material used here was taken from various DX publications. It was prepared solely for the purpose of aiding anyone interested in obtaining verifications from these countries and does not claim to be a total listing. Sincere thanks to Mr. William Oliver (Publisher & Business Manager) of FRENEX, Mr. Sam Barto (Editor QSL Report) - FRENEX, and Mr. Mitch Sams (Mng. Editor) of FINE TUNING for giving their permission to use material contained in their publications. Not responsible for errors in Station names, frequencies, or names of verification signers. This is strictly a W.Y.S.I.W.Y.G. (what you see is what you get) list. A big pat on the back to my other half (BOB) for doing all the typing and arranging. I hope this will prove useful to some of you.

73, Donna Robinson (CADX)

ARGENTINA

LOL	10000		
LRA1 R. NACIONAL	6060	V/S GABRIEL IVAN BARRERA	
RAE	9690	V/S SILVANA LICCIARDI	
RAE	9710	"	
RAE	11710		
RADIO RIVADAVIA LS5	4588	V/S ING. JORGE ARMONDO FALCONE	
RADIF. ARGENTINA	9690		

BOLIVIA

R. CRUZ DEL SUR CP75	4875.9	V/S PASTOR HODOLFO MOYA	DIRECTOR
RADIO EL MUNDO	6015	V/S FREDDY BANEGAS CARRASCO	
RADIO PAN AMERICA	6105	V/S DANIEL SANCHEZ ROCHA	SUB DIRECTOR
RADIO SAN GABRIEL	6079.3	V/S HON. JOSE CANUT	DIRECTOR GERENTE

BRASIL

EDUC. BRAGANCA	4825	V/S N.S. BARROS	
RADIO APARECIDA	11855		
"	6135		
RADIO BANDERIANTES	11925	V/S SALOMAO ESPER	SUPERINTENDENTE
RADIO BANDERIANTES	6090	"	
RADIO BRAS	11745		
R. CLUBE do PARA	4885		
RADIO CLUBE PARA NAENSE	6040	V/S UBIRATAN LUSTOSA	DIRECTOR
R. CLUBE PERNAMBUCO	11865	V/S PAULO SANTIAGO TEC. DE	MAINTENANCE
RADIO CONGONHAS	4775	V/S LUCIO COIMBRA	
R. CULTURA DO PARA	5045	V/S RONALD PASTOR	DIRECTOR
R. CULTURA SAO PAULO	17815	V/S OLIMPIO JOSE FRANO	
RADIO CULTURAL	17815	V/S JOSE MUNHOZ	ENGINEER
R. DIFUSORA DO AMAZONAS	4805	V/S JOSE JOAQUIN MARINHO	
RADIO EDUCACAO RURAL	4755	V/S AILTON GUERRA	GERENTE
RADIO EDUCADORA de BRAGANCA	4825		
RADIO GUACHA	6020		
"	11915		
RADIO GUAIBA	6000	V/S CARLOS ALBERTO RHEINO	
R. INCONFIDENCIA	6010		
R. INCONFIDENCIA	15190	V/S JOAO BARBOSA	SUPERINTENDANT
R. MARAJOARA COMMERCIAL	4955	V/S RONALDO PORTO	DIRECTOR
RADIO MORIMOTO	4915	V/S JOEL B. NOGUERIA	
R. NAC. DA AMAZONAS	6180		
R. NAC. BOA VISTA	4875		
R. NAC. MACAPA	4915	V/S EUDSON MONTIERO LIMA	
R. NACIONAL MANAUS	4845	V/S EUDSON MONTIERO LIMA	
R. NACIONAL de CACHOEIRA	3375	"	
R. NAC. de PORTO VELHO	4945	V/S ADELICIO CARVALHO RAMOS	GERENTE
R. NAC. TABATINGA	4815	V/S EUDSON MONTIERO LIMA	
RADIO RECORD	15135		
RADIO RIO MAR	9695		
R. RURAL DO SANTAREM	4765	V/S EDUARDO AGUSTO DOS ANJOS	GERENTE
R. SURINAME INT. VIA BRAZILIA	17838.1		
R. VERDES FLORESTAS	4865		

		COLOMBIARACOL NEIVA	4945
LA VOZ DEL ARIARI	5991.5		
LA VOZ de LOS CENTUARIOS	5955	V/S JUAN CARLOS TORRES LEYVA	
RADIO MACARENA	5975	V/S ENRIQUE ZAMBRANO NIETO	
RADIO MELODIA	6045.6	V/S ELVIRA MEJIA de PAEZ	
RADIO NEUVA VITA	5569.3	V/S MARCO ANTONIO CAICEDO O.	
"	5566.1		
RADIO SUTATENZA	5095	V/S LUZ ANGELA DUENOS	
COSTA RICA			
AWR-RADIO LIRA	15460	V/S DAVID L. GREGORY	MGR. CH.F. ENGINEER
R. FOR PEACE INT.	7375	V/S JAMES LATHAM	STATION MANAGER
"	21555	"	"
RADIO IMPACTO	5030		
"	6150	V/S HECTOR REQUENA C.	
"	6155		
"	6160	V/S HECTOR REQUENA C.	
RADIO RELOJ	4832	V/S FRANCISCO BARABONA G.	
RADIO RELOJ	6006		
TIFC	5055		
CUBA			
RADIO HABANA	6090		
"	9655		
"	9740		
"	6140		
"	11815		
"	9550	V/S ROLANDO PELAEZ	
RADIO MOSCOW	9600		
"	6000		
"	6040		
"	11840		
RADIO REBELDE	5025	V/S JORGE LUIS MAS ZABALA	
DOMINICAN REPUBLIC			
RADIO AMANECER	6025	V/S SOCRATES DOMINGUEZ	ENGINEER
RADIO ANTILLAS	5955.5	V/S JOSE ALBERTO MARTINEZ	DIRECTOR
RADIO CLARIN	11700		
RADIO MIL HIN	2440	V/S EDUARDO GUERRO	DIRECTOR GENERAL
ECUADOR			
EMISORAS JESUS DEL GRAN PODER	5050	V/S JORGE ENRIQUEZ SILVA	
ESCUELAS RADIO FONICAS POPULARES DEL ECUADOR	5015	V/S PATRICIO MUNOZ JACOME	DIRECTOR EJECUTIVO DE ERPE
HCJB	6205		
HCJB	6230		
HCJB	9720		
HCJB	9870		
HCJB	9875	V/S ROGER G. STUBBE	
HCJB	11740		
HCJB	11775		
HCJB	11790		
HCJB	15115		
HCJB	15155		
HCJB	17890		
LA VOZ DEL NAPO	3280	V/S RAMIRO CABRERA	DIRECTOR
LA VOZ DEL UPANO	5040	V/S DELORES PALACIOS C.	DIRECTOR
LA VOZ de LOS CARAS	4795.5	V/S MARCELO A. NEVAREZ F.	ING. SONIDO
R. ANTENA LIBRE	3239.6	V/S LUIS E. VELASCO LEON	GERENTE
RADIO CATOLICA NACIONAL	5055	V/S P. ANTONIO ARREGUI	DIRECTOR GENERAL
R. CENTINELA DEL SUR	4890	V/S MARCOS G. CORONEL VELEZ	
R. INTEROCEANICA	4840		
RADIO IRIS	3381	V/S PILLY NARANJO DE VILLAGOMEZ	
R. NAC. DEL ECUADOR	11960	V/S GONZALO POTUGAL P	DIRECTOR
R. PAZ y BIEN	4820	V/S ENRIQUE PESANTEZ G.	GERENTE
RADIO ZARACAY	3395	V/S ELSSY CUN C.	SECRETARIA
HD210A	3810		

FIBS	3958	FALKLAND ISLANDS	
FIBS VIA BFBS	3958		
		FRENCH GUIANA	
RFI	9800		
		GALAPAGOS ISLANDS	
LA VOZ de GALAPAGOS	4810.2	V/S PADRE VICTOR MALDONADO	
		GUATEMALA	
LA VOZ de GUATEMALA	6180		
LA VOZ de ATITLAN	2390		
RADIO CHORTIS	3380	V/S PADRE JUAN MARIA BOXUS	
TGMI RADIO			
BUENOS NUEVAS	4800	V/S ISRAEL RODAS M.	SUB DIRECTOR
TGVC R. KEKCHI	4845	V/S DAVID DANIELL	
		GUYANA	
GBC	5950	V/S J. GOODMAN	DEPUTY CHIEF ENGINEER
		HONDURAS	
HRII SANI RADIO	4755		
HRVC	4820		
LA VOZ EVANGELICA	4820		
LA VOZ de LA MOSQUITIA	4910.4	V/S REV. JACK MEEKS	
RADIO LUZ Y VIDA	3250	V/S DON MOORE	
		MEXICO	
LA Q XEQQ	9680	V/S GRISELDA SANCHEZ LOPEZ	
LA VOZ de VERACRUZ XEUV	6020	V/S BALTAZAR PAZOS DE LA TORRE	DIRECTOR GENERAL
R. HUAYACOCOTLA	2390	V/S ELVIA SANCHEZ ALVEREZ	
RADIO LA HORA EXACTA XEQK	9555	V/S LIC. R. HUMBERTO ESTEVANE TORRES	GERENTE
RADIO MEXICO INTERNATIONAL XERMX	17765	V/S LIC. BEATRIZ VILLA MEDINA GARCIA	GERENTE
XEPHM R. EDUCACION	6185	V/S ING. GUSTAVO CARRENO L.	SUB. DIR. TECNICO
XEQM	6105		
XERMX	9705		
XEW LA VOZ LA AMERICA LATINA			
		NETHERLAND ANTILLES	
RADIO NEDERLAND	9590		
RADIO NEDERLAND	9650		
RADIO NEDERLAND	17605		
RADIO NEDERLAND	21485		
TWR	9535	V/S KRISTIN SHAW	
		NICARAGUA	
LA VOZ de NICARAGUA	6100	V/S FREDDY LOPEZ QUIROZ	DIRECTOR-SWBC
RADIO ZINICA	6120.5	V/S ARTURO J. VALDEZ R.	DIRECTOR
		PARAGUAY	
R. ENCARNACION	11945	V/S PROF. ALEJANDRO LA PIERRE	DIRECTOR
RADIO NACIONAL	9735	V/S CARLOS MONTANER	JEFE TECNICO
		PERU	
ESTACION "C"	6324	V/S ROQUILMER CENTURION TAPIA	
LA VOZ de LA SELVA	4825	V/S DULCE NOMBRE PADILLA	
"	4825	V/S M. ELEBAR	
RADIO AMERICA	6010.9	V/S LUIS ANGEL PINASCO	GERENTE
RADIO AMISTAD	8515		
RADIO ANCASH	4991	V/S ARMANDO MORENO ROMERO	GERENTE GENERAL
RADIO CUSCO	6191.7	V/S ELENA LIZARRAGA P.C.	GERENTE GENERAL
RADIO DEL PACIFICO	9675	V/S J. PETRONIO ALLAUCA	
"	9949		
R. HUANCAVELICA	4845	V/S CARLOS RAUL ANGELES DURAN-LOCUTOR y DIRECTOR de PROGRAMACION y PUBLICIDAD	

RADIO HUANCAYO	5955	V/S ANA MARIA C.R.	
RADIO HUANTA 2000	4756	V/S RENATO FELIPE	
RADIO MARANON	4835	V/S JOSE LUIS MALDONADO S.J.	DIRECTOR
RADIO MARGINAL	4039	V/S ALVARO ROJAS BALBUENA	DEPT. TECHNICO
RADIO MELODIA	6260.2	V/S MIRTHA CERVANTES ALVEREZ	SEC.
RADIO MODERNA	4299.3	V/S GREGORIO SANCHEZ JUNIO	
RADIO ONDA AZUL	4800.7	V.S MAURICIO RODRIGUEZ R.	JEFE de PROD.Y PROGRAMACION
R.QUILLABAMBA	5025	V/S P.RUFINO LOBO ALONSO o.p.	DIRECTOR
RADIO RIOJA	5045	V/S TEOFILO JAUN MORI MENDOZA	
RADIO SAN MARTIN	4810	V/S JOSE ROBERTO CHONG	
RADIO SANTA ROSA	6045.5	V/S P.JUAN SOKOLICK A.	
RADIO SENSACION	6792.6	V/S GUSTAVO SALAZAR SUAREZ	
RADIO TROPICAL	4936		
"	4935	V/S LUIS F. MORI REATEGUI	GERENTE
RADIO UNION	6115	V/S GONZALEZ IWASAKI SANCHEZ	GERENTE
RADIO VISION	5360	V/S HEBER AREVALO RIOS	ADMINISTRATOR
URUGUAY			
R.EL ESPECTADOR	11835	V/S HUGO MAGNANI DUPETIT	DIRECTOR
RADIO MONTE CARLO	9595	V/S ANA FERREIRA BONINO	
VENEZUELA			
ECOS DEL TORBES	4980	V/S G.GONZALEZ LOVERA	
LA VOZ de CARABOBO	4780	V/S JARGO SALAZAR R.	
RADIO CAPITAL	4850	V/S MANUEL CORREA	
"	4850	V/S ROSY ALVAREZ	
RADIO OCCIDENTE YVTC	3225	V/S PBRO.RICARDO SILGUERO L.	DIRECTOR
RADIO RUMBOS	9660		
"	4970		
RADIO TACHIRA	4830	V/S ELEAZAR SILVA M.	COORDINADOR GENERAL
RADIO VALERA	4840		

FOR IMMEDIATE RELEASE!  
January 17, 1989

CONTACT: Mike Pollock  
PO Box 195  
Syracuse, NY 13210  
315 475-7445

NOW AVAILABLE! Cassette copies of Ray Briem's SW-DX spectacular broadcast January 7, 1989 on ABC Talkradio. Two ninety minute cassettes containing the entire three hour program, recorded direct from satellite and condensed to remove commercials. Featuring guests such as Stewart McKenzie of the ASWLC, Steve Miller of Radio West, Tom Kneitel of Popular Communications, Larry Magne of Passport to World Band Radio, and consulting engineer George Jacobs. Also included is a special documentary, "NDXE: The Radio Station that Wasn't." with interviews of Nettie Robinson of WCSN, Joseph Costello of WRNO, and H. Dickson Norman of NDXE. Send check or money order for \$7.95 to Mike Pollock, PO Box 195, Syracuse, NY 13210. Allow 2-4 weeks for delivery.



# FRENDX LOG REPORTERS

Distributing Editor: John Kapinos, 86 S. Quinsigamond Ave., Shrewsbury, MA 01545

Greetings and welcome to the February, 1989 Contributors' Page. The following folks helped make this issue of FRENDX possible:

Brian ALEXANDER, Mechanicsburg, PA  
Kirk ALLEN, Ponca City, OK  
Kevin ATKINS, Pinson, AL  
Jean BURNELL, St. John's, NF: Icom R71A  
Ray BAUERHUBER, Rosedale, NY: Sony ICF 2010  
Gary BECKER, Deer Park, NY: Drake R4B, Sangean ATS 803A  
Edward CICHOREK, Somerset, NJ: Yaesu FR68B00  
Richard D'ANGELO, Wyomissing, PA  
Barbara Ann DILL, Saint Mary's, PA: Panasonic RF 2200  
Peter DILLON, serving America in Greece: Radio Shack DX-400  
Rev. John C. ECKERT, Collegeville, PA: Kenwood R 5000  
Richard ECKMAN, San Jose, CA: Panasonic RF-4900; Sony ICF 2010  
John FIGLIOZZI, Clifton Park, NY: Sony ICF 2010  
Jay GOLDEN, Rochester, NY: Racal RA17L, Collins R390A  
Arthur HANKINS, Greensburg, PA: Kenwood R 1000  
Rufus JORDAN, Pittsburgh, PA: Radio Shack DX-302  
Tom LASKOWSKI, South Bend, IN  
Harold LEVISON, Philadelphia, PA: Icom R-70  
Ken MACHARG, Jeffersonville, IN: Sangean ATS 803  
Don MOORE, on vacation in Guttentberg, IA: Yaesy FRG 7 (MOD)  
Dale PARK, Honolulu, HI: Sony ICF 6700W; Sangean ATS 803  
Sheryl PASZKIEWICZ, Manitowoc, WI: JRC NRD 515  
John PRATH, Ft. Lauderdale, FL: Icom R 71A; JRC NRD 525  
Andy RUGG, Nun's Island, PQ: Hammarlund HQ 180; Icom R 71A  
Mitch SAMS, Wichita, KS: Hammarlund HQ180A, Yaesu FR5 7  
Roland SCHULZE, Stuttgart, West Germany: Kenwood R 5000; Drake R4B  
Harold SELLERS, Newmarket, ON: JRC NRD 515  
Dan SHEEDY, Encinitas, CA: Icom R 70  
David SNYDER, Staten Island, NY  
James STREITMATTER, South Bend, IN: Yaesu 7476X, Sony ICF 2001  
Ron TROTTO, St. Cloud, FL  
John TUCHSCHERER, Neenah, WI: Icom R-70; Yaesu FR6-7700  
Steve WALLACE, Fleetwood, PA: Drake R4B, Hammarlund HQ180A  
Dr. Richard WOOD, Hilo, HI: Kenwood R-1000; Drake SPR-4  
Robert ZILMER, Rio Rancho, NM: JRC NRD 515; Kenwood R1000

\*\*\* kap's comments \*\*\*

Nice turnout this month folks, thank you very much.

Again this month there will not be an Awards Page, my fault this time around. With "Tax Season" in full bloom at the Firm I've just not had the time to process several Awards Applications. My apologies to those concerned, though you will surely have your well earned Awards by the time you read this.

I hate to sound like a broken record, but contributions received here after the 12th of the month must be held over until the following month. Remember, there is no way that material mailed in Minchie Creek, MN on the 11th is going to make it. I don't mean to belabor the point, but material must be sorted on the evening of the 12th and mailed to the respective editors the following morning or the whole bulletin falls behind schedule.

Till next month





# LOG REPORT

## section B

4900 to 6199 kHz

Editor: Sheryl Paszkiewicz, 1015 Green St., Manitowoc, WI 54220-6231

- 4904.7 CHAD, RN, 1/2, 0445 in FR w/lcl rhythms, OM w/ID. Fair w/lcl QRM. (Wallace-PA)
- 4905 BRAZIL, R. Relogio Federal, 12/11, 2325 w/tlk, 3 pips abt every 2 min, ID 2329, over another Latin. (Wallace-PA)
- 4910 ZAMBIA, ZBS, 12/30, 0357 in lang to 0400 EG nx by M. Very weak. (Sellers-ON) 12/22, 0342 w/tlk, Fish Eagle IS, NA, mx 0400, TP, ID, EG nx. (Snyder-NY) 12/21, 0406 w/EG world nx, good. (Wood-HI)
- 4915 BRAZIL, RN Macapa, 12/6, 0920 w/tlk, ID, canned ID 0930, lively mx, more tlk. SIO=333. (Trotto-FL)
- 4915 GHANA, GBC-1, 12/25, 0005\* in EG on late for holiday w/closing ID, ment. 5:30 lcl s/on, choral NA & off. (Sheedy-CA)
- 4920 AUSTRALIA, VLM4 Brisbane, 12/21, 1203 w/nx, ID for ABC News, James Taylor song. SIO=2+52+ (D'Angelo-PA) At 1220 on 12/29 w/mx. (MacHarg-IN)
- 4927 SUMATRA, RRI Jambi, 12/22, 1158 ending lcl mx, 1200 Jak relay, 1215 lcl ID by YL, soft instls to 1230. (Atkins-AL)
- 4930 GEORGIAN SSR, Tbilisi, 12/28, 0454 vy weak and //4765, etc. Ashkhabad also listed but they are in daylight @ this time. 4940 Kiev also hrd at this time w/fair sig. (Sams-KS)
- 4930 HAITI, 4VEH, 12/28, 2228 in SP w/rel pgm, 2230 ID as "Radio 4VEH." (Rugg-PQ)
- 4930p TURKMEN SSR, Ashkhabad, 1/1, 0059 in lang w/Mayak IS, 6 pips on hour, tlk, vocals. (Rugg-PQ)
- 4930 UNID, 12/28, 0320+ w/OM yelling numbers & ment. cities like Miami, Porto Vallarta, followed by excited tlk, on @ 0400 yet, not hrd since. (Sams-KS)
- 4934 KENYA, Vo Kenya, 12/12, 0254 in EG w/EZL instls, TC, ID by OM, march mx 0315, lcl vcls, fading by 0335. (D'Angelo-PA)
- 4935p BRAZIL, R. Capixaba, 12/16, 2250 w/tlk, ID, FC over Uriah Heep song, F-G sig. (Wallace-PA)
- 4935 BRAZIL, unid., 12/24, 2255 w/tlk in PT, poor sig. (Moore-IA)
- 4935.1 PERU, R. Tropical, 12/16, 0945 w/OA mx, tlk, ID. (Alexander-PA)
- 4940t UKRAINE, Kiev, 12/15, 0130-0143\* w/tlk & lite clx & heroic folk mx. No ID but s/off annmnts like PT/TBS info. (Jordan-PA) 12/7, 1720 w/choral mx, clx, ID 1750, no nx on hour. (Dillon)
- 4940t ASIATIC RSFSR, Yakutsk, 12/15, 2350-2400\* in RS w/tlk, folk anthem, OC. (Jordan-PA)
- 4950 CHINA, Xilinhot, 12/8, 1208 w/nx in Mongolian, good but QRM from CH station. (Wood-HI)
- 4953 ANGOLA, RN Luanda, 12/21, 0400 w/ID, nx, 0405 sports, good sig. (Wood-HI) Very nice--sp.
- 4957.5 AZERBAIJAN SSR, R. Baku, 12/30, 1340+, weak thru ute QRM, // 6110. Mid-East mx, ment. Baku 1345. (Allen-OK)
- 4955 BRAZIL, R. Marajoara, 12/24, 2106 w/ID, ads, mx. (Schulze-FRG)
- 4965 BRAZIL, R. Alvorada, 12/16, 0902 w/DJ tlk, mx, ads, ID. (Alexander-PA)
- 4975t BRAZIL, R. Tupi, 12/18, 0715 w/ballads, ads, jingles, tlk, tent. ID 0730, weak sig. (Alexander-PA)
- 4975 BRAZIL, unid., 12/19, 0410 w/lcl pops, echo tlk, ment. Brazil, no ID, on past 0515, weak but clear. (Wallace-PA)
- 4975p TADZHIK SSR, Dushanbe, 12/24, OM nx in RS, ME type mx, good. (Moore-IA) 12/28, 1350+ tentative w/RS pgm. No //s & rapid fade. (Sams-KS)
- 4976 UGANDA, R. Uganda, 12/22, 0403 in EG w/nx, ID 0413, vcls & brief tlks by YL. SIO=232. (D'Angelo-PA)
- 4980 PAKISTAN, PBC/Azad Kashmir R., 12/26, 0200 in Urdu w/Quran, choral mx, 3 pips, ID //5089.9, 4878.9, poor. (Sheedy-GA)
- 4990 ARMENIA, R. Yerevan ES, 12/7, 1805 in AR w/tlk abt Krestroika, ID, with ref. (Dillon-GREECE)
- 4990 CHINA, Hunan PBS, 12/22, 1107 in std CH, economic tlk, ID 1110, pop mx hosted in EG & CH, Western T401, poor w/fade by 1122 (broad daylight here!) (Burnell-NF)

- 4990p INDIA, AIR Delhi, 12/24, 0010 in lang w/tlk by YL/OM, sub-cont. mx, poor. (Moore-IA)
- 4990.6 PERU, R. Ancash, 12/19, 0318 w/LA mx, some huaynos. (Tuchscherer) 1/1, \*0955 w/huaynos, anmmts, ID, tlk. (Alexander-PA)
- 4995 MONGOLIA, Choibalsan, 12/8, 1120 w/tlk, ID-"Ulaanbaatras," 7/4080, good but QRM from Soviet time sig. (Wood-HI)
- 4995.8 PERU, R. Andina, 1/1, \*0852 w/huaynos, ID, ads, some echo anmmts. (Alexander-PA)
- 5004 RIO MUNI, RN Bata, 12/19, 2116 in SP w/ID by W&M. (Snyder-NY)
- 5005 NEPAL, R. Nepal, 12/19, 0021-0121 w/lcl flutes, ads, 0115 pips nx, weak but came up 0110, utes ruined it 0121. (Burnell-NF) 12/15, 1135-1216, lcl vcels, 3+1 pips 1215, YL ID. Also 12/13 & 14 but no IDs then. (D'Angelo-PA) 12/28, 1211 w/pips 1215, lcl mx--orch/flutes/bongos. (Eckert-PA) 12/22, 1242 w/subcont. vcels, 1245 "Yo Radio Nepal Ho," nx, good. (Atkins-AL)
- 5014.5 BRAZIL, unid., 12/20, 2346 w/mellow mx, sev. ads, ment. Rio a lot, Soviet IS @ 2359 on 5015 makes things tough. (Burnell)
- 5015 CLANDESTINE, R. Truth, 12/23, 1759 in EG w/closing anmmts, bird call IS. (Schulze-FRG)
- 5015p EURO RSPSR, Arkhangelsk, 12/31, 0345 in RS w/jazz, tlk, Mayak IS 0359, 7/4795, 4930, 5935, 7420. (Alexander-PA)
- 5020 SOLOMON ISL., SIBC, 12/27, 1002, RA EG nx, very weak. (Sellers)
- 5024.9a PERU, R. Quillabamba, 1/5, 0058 w/ads, flute bridge, AM/SW/FM ID 0103, "Panorama del Peru," much QRM de Rebelde. (Sheedy-GA)
- 5025 BENIN, ORTB Parakou, 12/25, 2050-2132 in FR w/clr IDs, Afr. folk mx. (Schulze-FRG)
- 5030 PERU, R. Los Andes, 12/4, 1026-1035 w/OA vocals, UTC-5 TC, ID 1030, some mensajes. SIO=353. (D'Angelo-PA)
- 5034.4t CENT. AFR. REP., R. Centafrique, 12/17, 2225 in FR w/lcl lively rhythms, YL DJ, NA, off 2303. Splash de 5035. P-F. (Wallace-PA)
- \*5035 AUSTRIA, Schulungssender, 12/13, 1805-1834\* w/fade in 1805, very weak, pop mx, then stronger. Clr GM ID 1830, then military NA, 3 IS & off on Tuesday. Tnx Schulze tip in FT. (Burnell-NF) Very good--sp.
- 5035 USSR, R. Moscow, 12/7, 1825-1905 in RS w/clx, anmmts, opera, RM ID 1900, fair sig. (Dillon-GREECE)
- 5040 GEORGIAN SSR, R. Tbilisi DS, 12/7, 1905-1930 in RS w/world nx, rpt from Yerevan, phone call, IS, fair. (Dillon-GREECE)
- 5040 VENEZUELA, R. Maturin, 12/18, 0010-0054 w/tlks, lots of LA pops/ballads, tlk w/lite orch mx in back, ID 0050, Indian flutes, guitar, no sign of Upano, QTH ref 0054, folk mx, fair. (Jordan-PA) 12/25, 0651-0657 w/folk mx, ID, TC, fair. (Moore) 12/6, 0947-1006 w/LA vcels, OM w/TC, IDs btwn songs, jingles, R. Rumbos nx 1000 w/bell chimes. SIO=2+52+ (D'Angelo-PA) 12/31, 1002 w/ID, jingles, ads, bell chimes. (Alexander-PA)
- 5045 BRAZIL, R. Cultura do Para, 12/9, 0417 w/EZL vcels, lengthy ID 0427 w/upbeat mx next. SIO=333. (Frodge-MI) Hi Harold--sp.
- 5049y VENEZUELA, R. Mundial, 12/30, 0555-0620 w/lively LA pops, OM w/ID, QTH ref, ballads, ads, jingles, ment. Impacto, more IDs by YL, vocals. (Jordan-PA)
- 5057 ALBANIA, RTV Shqiptar, Gjirokaster, 12/16, 0420-0500 in AB w/gypsy mx, Mideast flutes, ID 0455, 0458, poss. nx. (Jordan)
- 5075p CHINA, CPBS Beijing, 12/19, 2210 in CH w/lcl mx, YL tlk, strong sig. (Wallace-PA)
- 5256.4p SUMATRA, RRI Sibolga, 12/15, 1150 w/Mideast rhythms, 1159 SCI/Jak relay to 1215, then soft vcels, fair. (Atkins-AL)
- 5275.5 PERU, R. Onda Popular, 12/4, 0400-0505\* w/pops, huaynos, ballads, anmmts, ID 0501, s/off w/NA. Weak. (Alexander-PA)
- 5286 CHAD, R. Moundou, 12/22, 0456 in FR w/odd horn IS, instl, sung anthem, "Ici Moundou" 0500, upbeat native vcels, tlk. (Frodge-MI) 12/22, 0505-0550 w/exc. sig, hilife mx, clr ment. Moundou, good despite power line hash. (Laskowski-IN)
- 5500.8 IRIAN JAYA, RRI Biak, 12/22, 1027-1042 w/singing, tlk by YL, poss. nx, 1040 choir, more tlk, very poor. (Burnell-NF)
- 5507.5 CHINA, unk. site, 12/7, 1528 in CH w/instls, good. Do not confuse w/RRI Biak above. (Wood-HI)
- 5567.2 COLOMBIA, R. Nueva Vida, 0124-0157\* on 12/31, rel. tlk at good lvl but marred by strong QRM. (Tuchscherer-WI)

- 5800 CHINA, Xinjiang PBS, 12/10, 2319-2326 w/Mideast mx, W in lcl lang, poor. //4735 which was fair. (Burnell-NF)
- 5816p PERU, LV de Altiplano, 12/28, 1055, very weak w/nice flute mx, TC but no ID heard. (Sams-KS)
- 5875 UNID SITE, BBC, 12/12, 1745-1835 in FR w/tlk abt Armenian relief, London train crash, EG lessons, GM at 1830. (Dillon)
- 5897 UNID SITE, BBC, 12/19, 0150 in EG w/rel pgm, split second ahead of 6175, not SSB. Weak. (Wallace-PA) 12/18, 0404 in EG w/nx feature & remotes. SIO=222. (Frodge-MI)
- 5920 EURO RFSFR, R. Moscow maybe via Tula, 12/18, 0355 in EG w/EZL mx to 0359 IS, not back at 0400. SIO=22+2. (Frodge-MI)
- 5930 CZECHOSLOVAKIA, R. Prague, 12/15, 0100-0135 in EG w/news scrapbook. (Becker)
- 5945 FRANCE, RFI, 1/8, good in FR w/Serial type pgm, //5950. (Bauerhuber-NY) Time?--sp.
- 5955 NETHERLANDS, R. Netherlands, 0700 w/DD ID & "nieuws." Good. (Wood-HI)
- 5975 ENGLAND, BBCWS, 11/14, 2129 w/EG nx. (Hankins-PA) This may have been via Antigua--sp.
- 5973.1 PERU, R. Melodia, 12/16, 0940-1000 w/DJ tlk, TC by W, ads, jingles, ID. (Alexander-PA) That's the 2nd one that slipped out of order on me--sp.
- 5980 YUGOSLAVIA, R. Yugoslavia, 1/4, 0100 w/EG nx & discussions, heavy QRM. (Becker)
- 5985 BURMA, BBS, 12/20, 1500 w/EG nx, frequent IDs, faded by 1510. (Eckman-CA)
- 5985 USA, VOFC via WYFR, 12/29, 0231 w/EG pgm, YL singing. SIO=444. (Levison-PA) 12/15, 0300-0345 w/nx, mx, commentary on foreign relations. (Macharg-IN)
- 5990 JAPAN, RJ, 12/28, 1720 in EG, F-G. IDs. Thot this was real DX when noticed this freq. sked for NAM! (Sams-KS)
- 5995 MALI, RTM, 12/27, 0600 in FR w/plingplong mx, ID, //4785, 4835 all fair. (Wood-HI) What's plingplong or did I misread that--sp
- 6000 CUBA, RM via Havana, 12/13, 1212 in EG w/tlk abt Armenia, SIO=433. (Cichorek-NJ)
- 6005 CANADA, CFCX, 12/13, 1220 w/ad, traffic rpt, TC, ID 1221. SIO=433. (Cichorek-NJ)
- 6010.4v MEXICO, R. Mil, 12/29, 30, 2313-0043. Reactivated, P-F w/3 hets Dominant 0030 UTC. Variety of mx, many ads, 2-3 min ea. ID 0033 "R. Mil, XEOB(?) e XEOI onda larga y corta. Transmitiondo desde la..estudio en..Mexico. En..de MRM, Mexico R. Mil." UTC-6 TC. Ads for "La Casa de la Cantera." (Allen-OK) Nice, Kirk--sp.
- 6010.6 VENEZUELA, R. Los Andes, 12/17, 0708 w/lcl & Xmas mx, IDs as "Mil Cuarenta," jingle "un equipo joven en una estacion de primera," ads, R. Los Andes ID 0719. VOA splash 0729. (Burnell)
- 6015 AUSTRIA, RAI, 1/2, 0410 in EG w/mx, SW Panorama, ID. (Streitmatter)
- 6020 BRAZIL, R. Gaucha, 12/23, 2337 w/ID, FC, ads, some Xmas mx, P-F w/cochannel Netherlands QRM. //better 11915. (Moore-IA)
- 6020 NETHERLANDS, RN, 12/17, 1830 in EG w/nx, Newslite. (Dillon)
- 6025 DOMINICAN REPUBLIC, R. Amanacer, 0200-0230 w/Xmas mx, severe QRM. (Macharg-IN)
- 6029.5 CHILE, R. Santa Maria, 12/15, 0918 w/ID, folksy LA mx to 0937 fade. Poor. (Atkins-AL) 12/31, 0920 tent., lite mx, relaxed YL anncr, poor, no ID hrd. (Alexander-PA)
- 6030 CANADA, CFVP, 12/25, 0722-0740 w/"The Weekly Top 40." (Moore-IA)
- 6030 CHILE, R. Santa Maria, 12/18, 0827 w/canned jingles, ads, vcls, ment. Santa Maria, much QRM. (Eckman-CA)
- 6030 WEST GERMANY, Sueddeutscher R., 12/14, 0741 w/70s mx, ID 0743, X rated ad by YL, hi, phone calls, 0750 ID, mx. (Trotto-FL)
- 6035 COLOMBIA, LV Guaviare, 12/25, 0740 w/folk mx, ID, TC after each song, Aguadiente ad, poor. (Moore-IA)
- 6045 CUBA, RM via Havana, 12/13, 0240 w/interview, tlk abt Afghanistan atrocities on Soviets. SIO=343. (Cichorek-NJ)
- 6065 ALASKA, KNLS, 12/28, \*0800 IS, EG nx, good but low mod. (Wood) 12/4, \*0957-1012 in JP w/OC, IS 1000, ID & s/on anmts, choir, long tlk by OM. SIO=2+52 fading. (D'Angelo-PA)

- 6065 ALASKA, KNLS, 12/26, \*1000-1005 in JP w/weak sig. IS, ID, s/on anmts, US pops. (Alexander-PA)
- 6065 CANADA, CBC DS, 12/10, 1357 in vern w/C&W mx, ID. QRM from CFRX 6070. SIO=323. (Cichorek-NJ)
- 6070 CANADA, CFRX, 12/13, 1223 w/movie ads, TC, ID, business rpt. SIO=333. (Cichorek-NJ)
- 6085 USA, WYFR, 12/28, 1730, another strange one! Them with SP sce, ID, rel pgm. If from FL, can only guess this for daytime reception in Cuba at best. (Sams-KS)
- 6088.4 NIGERIA, R. Nigeria pres. via Kaduna, 12/24, 2228 w/tribal mx tlk in vern, not //4770, ment. RN but no lcl ID. Hrd this week only. (Allen-OK)
- 6095 CHINA, CPBS Taiwan 2 via Nanchang, 12/18, 1033-1111 w/CH nx, tlk abt archaeology, 1100 pips, into dialect, drama. (Burnell)
- 6095 POLAND, RP, 12/22, \*0655 IS, ID, 0700 nx in Polish. (Wood-HI)
- 6100nf NORTH KOREA, R. Pyongyang, 12/28, 0800 time sig, ID in KK, nx, //73960, good w/YVTO QRM, not //6250. (Wood-HI)
- 6100 NICARAGUA, Vo Nicaragua, 12/29, 0425 w/EG nx, ID 0426, FC, pop mx, poor w/YVTO QRM & others. (Sellers-ON)
- 6120 CANADA, R. Japan relay, 12/14, 1117 in EG w/cmnty, songs, SIO=444. (Levison-PA)
- 6125 ALASKA, KNLS, 12/24, 0702 in RS w/IS, ID, QTH, short tlk, ID SIO=333. (Trotto-FL)
- 6130 CANADA, CHNX, 12/27+, 0900, "From the CHNS weather center," sports, pop mx, dominating HCJBI Seems repaired. (Sams-KS) 12/27, 1035 w/IGA spots, the Bay & Air Nova ski holiday. (Sellers) 12/19, 2335 w/choir, song, ID, calendar, ads. (Cichorek-NJ)
- 6134.8 BOLIVIA, R. Santa Cruz, 12/15, 0957-1032 fade, mournful ballads, IDs, fair. (Atkins-AL)
- 6135 BRAZIL, R. Aparecida, 12/19, 0009 w/Brasopops & Elvis. (Burnell)
- 6135 SWITZERLAND, RCBS via SRI, 12/2, 0313 w/tlk abt prisoners, Nic. storm victims, Afghanistan. (Levison-PA)
- 6140 SRI, 1/10, 0400 w/nx, tlk abt canning old army tanks. (Dill-PA)
- 6140 CUBA, RHC, 12/18, 0340 in EG w/"Kaleidoscope," semi-effective bubble jammer. SIO=423. (Frodge-MI)
- 6150 COSTA RICA, R. Impacto, 12/18, 0600 NA, ID-"R. Impacto, 980 kHz OM y 6150 kHz OC banda int. de 49m." No ment. of 5030, also hrd, all 3 good. (Wood-HI)
- 6150 GREECE, VOA Kavala, 12/25, 1603 in pres. Hindi, nx, VOA ID & FC, surprised to hear E. Med. station @ this time. (Sheedy-CA)
- 6160t ALGERIA, RTV Algerienne, tent., 12/28+, 1645-1705 in lang w/AR & pop mx. March 1659, more mx. Positively Algeria next day at 2025. Hearing this all hours of day/nite! (Sams-KS)
- 6160 CANADA, CKZU, 12/29, 0806 w/wx rpt, old radio drama. (Sellers)
- 6160 NEWFOUNDLAND, CKZN, 12/27, 1037 w/lcl nx by M&W. (Sellers-ON) 1/1, 2300. This & Vancouver battling it out + Algeria. Vancouver had wx rpt, St. Johns had phone in. Only CKWX of Canada not logged here lately. (Sams-KS)
- 6170 UAE, Abu Dhabi, 12/27, 2200 in EG w/Bonanza song, FC--6170, 11965, 9597, addr. anned, editorial, culture pgm. (Zilmer-NM) 12/14, 2355 in EG w/rel tlk, anmt by YL 2359, pips & AR ID 0000, //9595, 11965. (Prath-FL)
- 6180 CYPRUS, BBC relay, 12/7, 1630-1710 in EG w/Anchors Aweigh, The World Today, nx //9410, 12095, 15070. (Dillon-GREECE)
- 6180 USSR, R. St. Peace & Progress, 12/27, 28, 1640-1730+ in RS w/tlk abt Perestroika //6155. 49m open all day! (Sams-KS)
- 6185 MEXICO, R. Educacion, 12/28, 1620-1715 w/old US protest mx, ment. Mexico, Educacion, "La Yuventud." Strange propagation. (Sams-KS)
- 6195 ENGLAND, BBCWS, 12/13, 1810 in EG w/world nx, nx abt Britain, Financial nx, sports. VG. (Dillon-GREECE)

What a nice turnout! Thanks, everyone. Tnx KEVIN ATKINS who wrote direct. You are allowed 1 misspelling of my name per year, hihi. Please note I believe MITCH SAMS was in Arkansas during his logging session, not Kansas. CUN30!



# LOG REPORT

## section C

6200 to 11699 kHz

Editor: Jerry Ervine, Box 5204, Hidalgo, TX 78557

- 5376.2 ENGLAND AFRTS feeder 0223 EG football-Bears vs Rams zlzSB-333 [tnks to ANARC SWL Net] (Cichorek-NJ 12/6)
- 6150 COLOMBIA Caracol Neiva 0080-0904 SP mx, cmtry, ID's; f. (Jordan)
- 6214.4 CLAND R. Liberacion 2320-2340+ SP tk, mx, QRM R. Caroline s/off w/chimes & anthem; // 5929.4 (Alexander-PA 12/8)
- 6205 IRELAND R. Fax 0928-1001 pop mx, ID's, tk, (Burnell-NF 12/22)
- 6215 INT. WATERS R. Caroline 0350 and later EG/DUTCH Xmas mx, pop mx, ID; (Frodge-MI 12/16-28) / also reported by Sams-KS, Sellers, Snyder-NY, Wallace-PA;
- 6215 LEBANON King of Hope 2230-2259 EG rel mx, QSB,QRN, y1/ID, Van Nuys CA mailing address. f. Golden-NY 1/2)
- 6225 GREECE VoG 0405-0430 GK nx, tkby om,yl, mx, ID, mx. p. (Jordan) / 0612 nx, ID, //7430, QRM HCJB. 333 (Trotto-FL 12/18)
- 6240 USA WENJ 0035-0145 EG ancr: Jack Beene, ID's, J-Rock, ph # 201-525-7960, Hilo address. Also hosts Dave Evans & Bob Wayne (D'Angelo-PA 12/25) / other reporters: Alexander-PA, Snyder-NY, Wallace-PA 12/18 & 24;
- 6240 USA KQRP Falling Star Radio 0433 EG om w/mx, ID's, address: NY, requests for DX material, review of past Scientific American articles; (Frodge-MI 12/24) / otherreporters: D'Angelo-PA, Alexander-PA, Wallace-PA)
- 6240.3 BANGLADESH RB 1340-1345\* mx, slow Bangladesh Zindabad(Allen-OK)
- 6249 EQ. GUINEA R.Nac. \*0459-0510 SP NA, ID, vocal mx; (D'Angelo-PA)
- 6305 CLAND LV del CID 0821 SP drama w/audience; vg. (Sellers) / 0528 mx, ID, (Frodge-MI)
- 6317 SCOTLAND Weekend Music Radio 0327-0350 EG/SP om,yl ancra, freq, power, QSL info. f-p w/QSB. (Atkins-AL 12/25) /0212-0430 D'Angelo-PA, / 0858 Sellers, / 0207 Alexander-PA;
- 6323.6 PERU Estacion 'C' 0422-0429\* SP ads, ment of Moyobamba, closing ancmts. s/off w/NA. (Alexander-PA 12/9)
- 6340 TURKEY Turkish Police Radio 0458-0535 TK NA, yl w/pres ID, mx, ancmts by yl. wk. Tnx tip from Mitch Sams. (Allen-OK 12/12) / Alexander-PA, / Jordan-PA;
- 6550 LEBANON VoL 1835-1925 AR/FR om ancr w/tk, ads, nx, ID.p (Dillon) / 0257 mx, yl ancr, mx, tk. 222. (Cichorek-NJ 12/6)
- 6576 KOREA, DR RP 2135 LANG? w/tk,mx, p w/flutter fade. PWBR says FR to W. Eu. (Figliozzi-NY 12/17)
- 6633 CLAND R. Venceremos 0135-0145 SP jumping around between 6619 & 6657. tk, mx, ID. //3461.9, 3753.5. (Alexander-PA 12/23)
- 6691 PERU R.Cuterva 0205-0234\* SP mx, DJ chatter, echo ancmts, ID's, chimes, closing ancmts. S/off w/ NA. (Alexander-PA 12/26) / 0008 -0023 pgm of live mx, ute QRM. (Moore-IA 12/25) / 0305 ID clean audio. f-g. (Sheedy-CA 12/23)
- 6691 UNIB POS. La V de Alpha 68 2321 SP om w/rel pgm, ID, ads, ment of Santo Domingo. drifted down to 6088 after 2350;back to 6691 @0104 (Frodge-MI 12/25)
- 6726 PERU R.SATELITE 2347-2351 Huaynos, ID, TC. f. (Moore-IA 12/24) / 0230--0300+ SP SP variety of mx, ancmts, s/off w/NA; (Alexander)
- 6750 CLAND R.Farabundo Marti 2345-0010 SP tk by om& yl, ID's, short mx breaks. varying +,-,200 hertz. (Alexander-PA 12-8/9)
- 6758 COLOMBIA R---UBRE? 0036 SP frantic tk by om & yl, ments of "Colombia-UBRE, Bogata", Revolucion Colombia" ID. 232.(Cichorek)
- 6769 CLAND R. Farabundo Marti SP om w/tk re Cubanos w/upbeat LA mx off abruptly @2319. (Frodge-MI)

8895 PERU R.Huancabamba 2359-0007 mx, ID, TC, ute QRM. f. (Moore-IA)  
8895.2 PERU R.Sensacion 0010-0102\* SP DA mx, ancmts, s/off w/NA. strong  
signal w/rtry QRM. (Alexander-PA 12/25)

8810 UKRAINTAN SSR 0320 EG tk w/ US travel agents. //7400 (Cichorek)  
8810 USSR RM 0454 RS yl,om w/tk, mx, IS continue in RS. (Frodge-MI)  
8889.7 USSR RM feeder 0327 RS om,yl tk, mx, IS,nx. (Cichorek-NJ 12/20)  
8909.3 UNID APRX 0300 looking for R. Dublin but only getting bits of  
audio, mostly mx after 0300. (Frodge-MI)

8910 IRELAND R.Dublin tent. 0315-0403 EG mx, QRM. 252. (D'Angelo-PA)  
/ 0156-0500 rock mx, ads. f. also hrd 1/8,1/9. (Figliozzi-NY)

7105 MONACO TWR 0808 EG om w/rel tk, bcst business; (Sellers 12/24)  
7115 BULGARIA R. Sofia 2135-2200 EG yl w/nx, mx bridge; (Jordan-PA)  
/ 0400 ID, sked by yl, nx by om; 555 (Snyder-NY 12/14)

7135 GABON RFI 0340 EG omtk, mx; 333 (Frodge-MI 12/21)  
7140 JAPAN RJ 1257 om,yl tk, t-pips, ID, pgm-'NHK Journal' (Trotto)  
//1500-1600 JP/EG //5990 nx, cmtry 5990, 21700, 21550; (Zilmer)

7145 ALGERIA V of Palestine, relay 1735-1805 AR Arafat's speech to  
UN, ID, into R.Algiers @1800; (Dillon-Greece 12/14)

7160 ITALY Italian R. Relay Svc. 0759 EG/IT ID as 'This is I-double  
R-S...signing on...' address, yl, om tk. wk w/hm QRM.(Sellers)  
// back to EG @0830 w/relay of UN

7165 ALBANIA RT \*2200 FR IS, ID, by yl, NA, nx by yl,om; 333 (Trotto)  
7180 HONG KONG BBC relay 1258 EG/CH, ID, t-pips, nx. p. (Sellers)  
7204.5 ZAIRE LV du Zaire pres. 0359 FR IS, anthem, yl,om ancrs, nx,  
cmtry, mx. (Frodge-MI 12/16) / drum mx. Wiped out by R. Tirana  
s/on. w. (Sellers 12/31)

7210 ASIATIC SSR "Govorit Radio Vladivostok" \*0815-0859 RS RM IS,  
yl,om ancr w/ID, tk, mx; p. (Jordan-PA 12/10)/ 0700-0714\* mx,lcl  
nx, interview, drama; (Jordan-PA 12/10)

7220 HUNGARY 2118 EG om w/mailbag pgm, mx requests. ID, more letters  
and mx. 434 (Trotto-FL 12/3)

7230 BURKINA FASO R.Burkina 0820-0833 FR lcl mx, om w/ID. rapid  
fade after 0830. (Allen-OK 12/9)

7240 USSR RM, Tula 1500 FR hrd under ANARC SWL ham net. Kremlin  
bells, ID. usually strong sig at this time in 41 m -solar flux  
256 acc. to WWV! (Figliozzi-NY 1/8)

7244.8 MAURITANIA vy strong signal (Allen-OK 12/9)  
7255 NIGERIA VoN 1750-1814 FR IS, speaking drums, ID, to press  
(Schulze-FRG 12/20) / 2046 EG om tk, pop mx. p ham QRM (Sellers)

7257.4 ITALY AWR Forli 0736-0759 EG Bible stories, ID's request for  
reports. f w/ bad QRM;(Atkins-AL 1/2) / rel pgm, ID, addr,  
carrier cut between lang changes. EG ID @0829. w, QRM (Allen-OK)

7270 POLAND RP 2308 EG nx by om, Polish nx 2310, ID by yl. 434  
(Snyder-NY 12/28) / 2335 weekly panorama, bus & econ nx. reports  
from lcl papers, arts & entertainment. 433 (Cichorek-NJ 11/30)/  
mx featuring Alfred Spinsohki ? and his rec.of Chopin's Opus 7  
#3 (Bauernhuber-NY 1/8)

7285 GERMANY\_FR DW 0218 EG 'Asia in the Press' mailbag; (Prath-FL)  
7285.4 MALI (ALLEN-OK 12/9)  
7285 SO.AFRICA RSA 0505 AK nuus (nx) g. (Wood-HI 12/20)  
7290 UNID RR? 1204 (Snyder-NY)  
7295 SO. AFRICA R. Five 0430 EG nx, g. QRMoscow. (Wood-HI 12/23)  
7355 USA WRNO 0030-0107 EG 'Band world of Radio' w/Glen Heuser #471,  
DX tips, QRM R.Moscow. (Schulze-FR 12/25)

7355 USA.ALASKA KNLS 1545 EG nx, cmtry, jazz concert; (Zilmer 12/28)

7380 CLAND LV del CID 0346 SP om w/ID, promo, EZLLA mx, (Frodge-MI)  
7365 USA. ALASKA KNLS 1102 CH 'Chariots of Fire' IS, s/om ancmt. w.  
(Sellers 12/29)

7415v USA.PIRATE R. Free Texas 0410-0423\* EG om w/ID, tk. (D'Angelo)  
/ 0330-0400 'War of the Worlds', ID as CBS-Calamity Broadcasting  
Service (Alexander-PA 12/11) /0311-0318 342 (D'Angelo-PA 12/11)

7415 USA.PIRATE United World R. 0327-0340 EG mx, ID, addr (Alexander)  
7415 USA.PIRATE WENJ 2057 EG ID, mx, ph. #, (Snyder-NY 1/2)  
7420 ISRAEL KOL 0218 EG tk on chemistry. 333 (Frodge-MI 12/20)  
7430 GREECE VoG 0342 EG/GK om tk, nx, ID. 343 (Frodge-MI 12/9) / 0359  
flute IS, s/on ancmts by om, nx. g. (Wallace-PA 1/3)

7445 TAIWAN V of Asia 1102-1137 EG pop mx, om w/nx. fade. (Burnell)  
7460 ISRAEL KOL 0105 EG nx, maintps of nx by om. 444 (Trotto-FL)  
7465 ISRAEL KOL 0200 EG nx, freq & time sked. //9385, 9435. (Zilmer)  
7475 TUNISIA R.Tunis 1805-1830 AR om w/nx, ID, ute QRM. f. (Dillon)  
7520 USA WHRI 0320 EG nx-US ballads, ID, addr by yl (Wallace-PA 12/11  
/ 0435-0431 mx sels, om, yl ancrs, ID's into Lang (Jordan-PA)

7520 BANGLADESH RB \*1600 AR prayers, vocals, nx?, tk. (Zilmer-NM)

9010 ISRAEL KOL 0535 HB om w/cmtry, ads. (Frodge-MI 12/23) / 2145  
-2300 Latin midnight mass in Bethlehem. //9435, 11805; (Zilmer)

9022 IRAN VOIRE 1830-1900 GM/FR om w/nx, ID, IS, sked, nx. (Dillon)  
/ 2129 IS lang (Copp) / 2006 EG (Snyder-NY) / 1942 EG (Sellers)/  
0534 SP prayers to yl w/cmtry. (Frodge-MI)

9334.4 UK AFRTS, Barford Seahawk-Raider football; f. (Figliozi-NY 12/18)

9385 ISRAEL KOL 0508 HB nx of Arafat. g w/QRM ute. (Wood-HI-12/9)

9410 ENGLAND BBC 2134 EG Notre Dame football satire; (Hankins-PA)

9435 ISRAEL KOL 0500 EG nx, voice of Arafat-interesting! g. (Wood-HI)

9445 TURKEY VoT 0400-0440 EG nx, rev Turkish press. (Becker 21/12) /  
2348 choral mx, ID, freq, ancmts, IS. (Cichorek-NJ 12/5) / 2304  
om, yl w/nx, press rev, ID //7250 544 (Cichorek)

9455 ISRAEL KOL 1800-1815 EG nx, cmtry, WX. // 11585. (Zilmer-NM 1/2)

9455 USA WHRI 1344 EG/SP ID, sermon, ID, addr. into SP. (Golden-NY)

9475 PAKISTAN RP 1400 UR nx, tk mx. //11615, 13675. (Zilmer-NM 12/25)

9480 CHINA, PR 1112 Esperanto tk on Shanghai art festival. //6955. g.  
(Wood-HI 12/8)

9500 ALBANIA RT \*0630 EG ID, nx. g. (Wood-HI 12/20)

9508 ALGERIA RA 1901 EG om w/ freq, mx, nx re PLO. w. (Sellers-12/26)  
1940 US pop mx, ID by yl. // 15215. p. 333. (Cichorek-NJ 12/2)

9515 LESOTHO BBC 1303 EG wld nx, tks re N & S Korea. (Cichorek-NJ)

9534 ANGOLA RNA 0540 AFRO Lang tk on Gen. Antonio Spinoza; (Wood-HI)

9515 USSR RM 1710-1730 EG ID, wld nx, farmers pgm; f. (Dillon-GRE)

9525 IRAN VOIRE 1730-1745 AR ID, martial mx, nx re PLO. jam. (Dillon)

9540 MADAGASCAR R. Ned. 2109 EG DX pgm re Pirates; 333 (Frodge-MI)

9540 UZBEK SSR 1206 EG nx by om; // 8600, 11785 444 (Cichorek-NJ 12/8)

9540 POLAND RP mx sels w/yl ancr, ID, freq, ancmts, addr. (Cichorek)

9545 SOLOMON IS. SIBS 0735 EG nx, wx, shipping movements; g. (Wood)

9555 MEXICO XEQK LaHora Exacta 1245 SP om, yl tk, time given on each  
minute. p. (Sellers 12/31) / 1220-1243 two om's w/nx, ID, TC.  
Brief jingle commercials; (D'Angelo-PA 12/17)

Due to time and the number of reports this month, I will have to split it up. I would like to welcome all of the new reporters and thank everyone for the fine support. would have made at least 6 pages. Regards to all! Jerry

9560 JORDAN RJ 2140 EG US pops, Eur pop vocals. Wednesday Evening Show. fade to 2200 s/off. (Copp 12/21) / Several reports on this entry: 1935 Golden-NY, 1632 Burnell-NF, 1945 Figliozi-NY, 0534 Trotto-FL, 1647 Cichorek-NJ, 2032 Frodger-MI, 1912 Eckman-CA, Alexander-PA, 1836 Cichorek-NJ.

1833 SWITZERLAND SRI 0800 IT nx; // 9535 g. (Wood-HI 12/31)

9560 SWEDEN RS 1230 EG nx, special Christmas shopping pgm. (Zilmer)

9565 SAUDI ARABIA BSKSA 1700 Somali march, ID 'Halkan waa R.Saudi Arabia', nx; g (Wood-HI 12/20)

9575 SP. MOROCCO R. Medi-un 2055 FR AR mx; f. (Sellers 12/23)

9585 SO. AFRICA RSA \*0357-0415\* EG IS, ID, om ancr, freq, sked, ID IS, s/off. (Streitmatter 12/16) / 0405 om w/ nx, ID, time, freq, s/off. 434 (Trotto-FL 12/18)

9585 HUNGARY RB 2111 EG celebration, ID, IS 444 (Cichorek-NJ 12/17)

9585 GERMANY, FR DW \*0200 SP freq, sked, nx. //11785 (Zilmer-NM 12/30)

9590 NETH. ANTILLES RN Bonaire 0250 feature on WW II Cland stations, 433 (Frodge-MI 12/16) / 0316 rpt on solar activity. 555 (Snyder)

9590 SEYCHELLES FEBA 1500 EG nx, sports, wx, cmtry. //11865 (Zilmer)

9595 UAUUA R. 2240-2300 EG pop mx. vg. (Tuchscherer-WI 12/23) / 2240-2300 Capital R. [pos relay] om presenter, yl w/phone caller ID, addr. mx. f. (Copp 12/22) / 2200 Holy Q'ran to EG, (Zilmer-NM)

9595 BULGARIA RS \*1700 AR ID 'Huna Sofia' f. QRM BBCWS on unlisted 9595 (Wood-HI 12/20)

9595 PORTUGAL RFE Romanian ID 'Aici e Radio Europa Libera' nx. f. QRM NSB (Wood-HI 12/31)



# LOG REPORT

## section D

### 11700 and above

Editor: Wallace C. Treibel, 357 N.E. 149 St., Seattle, WA 98165

- 11705 SWEDEN RS in EG 0250, coping with winter in Sweden, ID, fqys (Cichorek NJ 12/15)  
11725 PORTUGAL R. Free Europe in PL 0603, nx, ID "R. Wolna Europa" (Trotto FL 12/23)  
11735 YUGOSLAVIA RY in EG 0118, nx & discuss, quiz, cmntry (Levison PA, Becker 1/4)  
11734 TANZANIA WOTZ in SH 1745-1830\*, vocals, tlk, ID, nx (Rugg QUEBEC 1/2)  
11735 NO. KOREA R. Pyongyang in EG \*2300, skeds, nx, cmntry, //13650 (Zilmer NM 12/19)  
11740 IRAQ BSRI in Azerbaijani \*0500-0550\*, NA, ID, into azan, nx, g (Wood HI 12/11)  
11755 FINLAND RF in FN 0220, continuous mx, f (Levison PA 12/20) in FR/EG 0320, s/off  
pgm in FR 0330, IS, into nx in EG, powerful signal (Treibel WA 1/17)  
11760 QMAN BBC relay in EG 0309, world nx (Snyder NY 12/19) ED: Site per WRTH 1989.  
11770nf SOUTH AFRICA R. Suid Afrika in AK 0558, wx, nx 0600, g (Wood HI 12/23)  
11775 ECUADOR HCJB Quito in EG 0230, "DX Partyline", //15155, 9720 f (Frodge MI 12/20)  
11780 BRAZIL RN Amazonia in PT 2056, w/MOR mx, full ID 2058, off, f (Frodge MI 12/22)  
11785 USSR R. Tashkent in EG 1203, nx re recent quake, ID 1205, g (Cichorek NJ 12/14)  
11785 EAST GERMANY RBI in EG 0310, DX pgm tlking abt propagation, g (Snyder NY 12/19)  
11825 SOCIETY IS. R. Tahiti in TT 0429, tlk by M w/backup, f-p (Snyder NY 12/29) in FR  
1320, FR pop mx selections, ID "Ici Tahiti", tlks, vp (Jordan PA 1/3)  
11835 SRI LANKA SLBC in EG 1114, ID, YL welcoming listeners, p (Sellers 12/29)  
11840 GUAM KTIWR in JP 2059, IS, ID, tlks by M & P (Schulze W. Germany 12/26)  
11845 SWEDEN RS in EG 1800, weekday nx, Nobel prizes review (Zilmer NM 12/29)  
11860nf IRAQ R. Baghdad in AR 0500, time sig, AR ID, TC, nx, g (Wood HI 1/2)  
11870 SEYCHELLES FEBA in EG 1500, IS, nx ED: this xmsn listed 11865 WRTH 89 (Wood HI)  
11885 SPAIN(p) R. Liberty in RS 0400, ID, nx, no jamming, QRM WYFR (Wood HI 12/23)  
11905 ITALY RAI in RS \*0325, ID, nx, QRM from R. Moscow!, f (Wood HI 1/2)  
11950 PORTUGAL D. Welle relay in RM \*1557, IS, ID, fqys, sked, vg (Sheedy CA 1/4)  
11955nf VATICAN CITY VR in EG 1511\*, closing LetterBox, IS, QRM frm UAE, f (Sheedy CA)  
ED: This must be a move from 11960 listed in WRTH 11955  
11955 ANGOLA RNA in PT 0600, ID, nx (Wood HI 12/21)  
11955 LIBERIA ELWA Monrovia in AR 0730, ID, hymns, exc (Eckman CA) in AR \*0700, IS,  
full ID, AR mx, tlk, f (Trotto FL) in AR/EG 0620-0800, "Morning Show" (Jordan PA)  
11955 SINGAPORE BBC relay in EG 0010, world nx, special rpt, g (Sheedy CA 1/3)  
11960 MALI RTM in FR \*0700, ID "rdif du Mali", TC, sked, g (Wood HI 12/11)  
11980 EGYPT VO Arabs in AR 0707-0800, AR mx, poetry, interview, ID (Dillon GREECE)  
12015 PAKISTAN RP in Urdu 0430, chanting, AR mx, tlks, p (Figliozzi NY 12/18)  
120188 VIETNAM VOV in EG 2330, nx, local mx, propaganda (Zilmer NM 12/29) in EG 2041,  
VT mx, YL spoke abt Xmas and played "Jingle Bells", p (Sellers 12/25)  
12025 MONACO TWR in EG/Kurdish 1550, folk mx, ID, into Kurdish 1600 (Dillon GREECE)  
12025 ALASKA KNLS in JP 2129, tlk & mx sels (Levison PA) ED: Last month this logging  
was erroneously listed at 12105(sic).  
12035 GABON Swiss Radio relay in IT 2300, nx, //5965, 9885, 9810 (Zilmer NM 12/23)  
12050 EGYPT R. Cairo in AR 1610, ID, call to prayer, AR mx, g (Dillon GREECE)  
12080 ISRAEL Kol Israel in RS 1630, nx, into Yiddish 1710, several //s (Zilmer NM)  
12085 SYRIA R. Damascus in EG 2005, nx, feature on Palestinian uprising (Eckman CA)  
In EG 2022, YL w/cmntry on Mediterranean tensions, AR vocals (Frodge MI 12/17)  
13605nf UNITED ARAB EMIRATES Abu Dhabi in AR 1601-1645+, AR mx, ID, f (Jordan PA 12/23)  
13635 SWITZERLAND SRI in EG 1330, "Dateline" nx, //11695, 15135, 15570 (Zilmer NM)  
13645 USSR R. Kiev (via Khabarovsk) in EG 0048, feature on US economy (Frodge MI 12/3)  
13645 USSR R. Rodina in RS 0230, tlks, RS folk mx, ID, f, //15180 (Jordan PA 12/18)  
13645 USSR R. Moscow 5th pgm (via Khabarovsk) in RS 0135, mx, cmntry (Figliozzi NY)  
13645 USSR R. Yerevan (via Khabarovsk) in AM/EG 0330, IS, ID, tlks, EG 0353, local &  
world nx, instrumentals to close out at 0400, g (Jordan 12/24)  
13665 PAKISTAN RP in TK(p) 1710-1745\*, Mid-East mx, NA at s/off, p (Treibel WA 1/18)  
13675 PAKISTAN RP in Urdu 1520, tlks, fanfare, ID, //11615, f (Sheedy CA 1/4) in EG  
\*1600, nx, into local mx (Zilmer NM) in EG 1630\*, mx, nx, fqys (Tuchscherer WI)  
13715 CZECHOSLOVAKIA R. Prague in EG 1530, Xmas holiday mx, //11685 (Zilmer NM 12/24)  
13720nf GUAM KSDA Adv. World R. in EG/KR/Burmese 1400, ID, Hong Kong address, hymn, g  
(Sellers 1/1) in HD 1645-1700\*, ME mx, s/off in EG, sked, fqys, f (Treibel WA)  
15055 TAIWAN WYFR relay via WQFC in EG 13d05, hymn & Bible reading, p (Sellers 12/26)  
15060 SAUDI ARABIA BSKSA in TK 0500, ID, nx, g (Wood HI 12/31)  
15105 MOROCCO RTVM in AR 0030, ME mx, vocals, phone conversations (Levison PA 12/28)  
15115 PAKISTAN RP in EG 0230, slow mx, distorted audio (Eckman CA, Zilmer NM 12/28)  
15120 INDIA AIR in EG 1230, plps, ID, nx, some flutter, g (Snyder NY 12/21)  
15140 CHILE RN de Chile in SP 0227, "oldie" rx, ID, ads, vg (Rugg QUEBEC 12/14)

- 15145 EAST GERMANY RBI in FR \*1515, NA, nx, xmen to Africa, g (Wood HI 12/30)
- 15150nf MADAGASCAR(?) R. Nederlands in EG \*1523 to Asia, not listed RN guide (Wood HI)
- 15165 DENMARK RD in DN \*1730 to Greenland, IS, very weak (Sellers 12/27)
- 15165 INDIA AIR via Bombay in HD \*0310, ID, fqys, film mx, //17805 (Wood HI 12/12)
- 15175nf SOUTH AFRICA RSA in EG 2315, New Years eve pgm, //9580, 11770 (Zilmer NM 12/31)
- 15180 USSR R. Kiev(via Komsomolsk) in EG 0259, IS, ID, nx re quake (Cichorek NJ 12/15)
- 15220 SOUTH AFRICA RSA in FR \*0430, IS, ID in FR/EG, NA, tlk, nx, g (Trotto FL 12/9)
- 15225 GUAM KSDA Adv. World R. in CH 0500, ID in EG, relig pgm, g (Wood HI 12/10)
- 15230 JAPAN RJ in EG 2300, nx, cmntry, several features, //5195 (Zilmer NM 12/28)
- 15240 SWEDEN RS in EG 1530 to Africa, "Sweden Calling DX'ers" (Zilmer NM 12/20)
- 15240 E. GERMANY RBI in EG \*1512, IS, Asia xmsn, nx, features (Wood HI, Zilmer NM)
- 15250 PORTUGAL RDP in PT 1522, for exch rates (Wood HI) nx in EG 1900 (Sheedy CA)
- 15275nf CHINA RFI relay in FR \*0100, IS, ID, nx, Western & FR mx, p (Jordan PA 12/7)
- 15300 UNITED ARAB EMIRATES R. Dubai in AR 1726, chanting, exc (Kling TX 12/29)
- 15310 NORWAY RNI in EG 1303, ID, "Science Notebook" & other features, g (Cichorek NJ)
- 15320 SRI LANKA D. Welle relay(p) in GM \*1200, IS, pips, ID, vp (Jordan PA 12/12)
- 15325 PHILIPPINE IS. R. Veritas in EG 0155, nx, ID, fqys, tlk, p (Sellers 12/24) in EG 0130, tlk re M. Luther King, nx, trumpet IS, into uniden lang, p (Burnell 12/19)
- 15330 MOROCCO RTVM in AR 1735-1830, interview, phone call, g (Dillon GREECE 12/17)
- 15335 MOROCCO RTVM in AR 1745, local mx, pop rx & DJ's, g (Wallace PA 12/29)
- 15340 ROMANIA R. Bucharest in EG 0535, end EG nx, into cmntry, //15380 (Wood HI)
- 15345 KUWAIT RK in EG 0629, recorded mx, ID, "Top 10 Hits", g (Trotto FL 12/20)
- 15375 SPAIN REE in EG 1915, nx, ID, TC, fqys, sports, mx (Dillon GREECE, Cichorek NJ)
- 15380 SPAIN R. Liberty in RS 0910, nx, mx interlude, ID, tlk, f (Trotto FL 12/15)
- 15400 FINLAND RP in EG 1207, big band mx (Snyder NY) EG 1426, features (Cichorek NJ)
- 15430 SWITZERLAND SRI in Esperanto 1520, tlk re Zurich airport, g (Wood HI 12/7)
- 15445nf USSR R. Kiev in EG 0030, nx, features (Frodge MI 12/18, Levison PA 12/7)
- 15460nf PHILIPPINE IS. R. Veritas in EG 1500, rpt on Pope's Xmas message (Zilmer 12/27)
- 15475 GABON Africa #1 in FR 2045, reggae & hi-life, ad, nx, f (Frodge MI 12/17)
- 15500 CHINA CPBS Beijing in CH 0500, time sig, ID, nx, g (Wood HI 12/9)
- 15525nf PAKISTAN RP in Gujrati 0430, Qur'an recitation, ID, light mx, g (Wood HI 12/9)
- 15630 GREECE VOG in EG 1839, GR mx, nx, ID & closing annmcs (Tuchscherer WI 12/29)
- 17595 MOROCCO RTM in EG 1600, nx, mx, lang lessons (Zilmer NM 12/27) in AR/FR/EG 1300-1445+, AR mx, chants, tlks, FR 1400, Afro hi-life, EG 1530, f (Jordan PA 12/13)
- 17720 FRANCE RFI in EG 1305, pgm closing w/Xmas greeting, mx, ID, FR 1309 (Prath FL)
- 17735 PHILIPPINE IS. VOA relay in EG 1155, "VOA Xmas Sunday Morning" (Prath FL 12/24)
- 17775 UNITED ARAB EMIRATES R. Dubai in AR \*0410, AR mx, //21700, 15435 (Wood HI 12/21)
- 17785 TURKEY VOT in EG 1338, Turkish press review, ID, f (Cichorek NJ 12/4)
- 17790 PHILIPPINE IS. R. Veritas in HD 0300, ID, ID, religious pgm, g (Wood HI 1/2)
- 17815nf SWEDEN RS in EG 1530, nx, "Sweden Calling DX'ers", move from 17810 (Zilmer NM) in RS 1329, IS, ID, tlks, Xmas mx (Prath FL 12/24)
- 17815 HONGKONG BBC relay in EG 0340, "Discovery", nx, press review, g (Jordan PA 12/7)
- 17865 UNITED ARAB EMIRATES R. Dubai in AA/EG 1558, ME mx, pips, ID in both langs, "Through Western Eyes", other features, g (Cichorek NJ 1/2)
- 17880 SWEDEN RS in SW 1700, nx, cmntry, mx, beamed to NA (Zilmer NM 12/27)
- 178814v COLOMBIA RN de Colombia in SP 2340, pop & local mx (Zilmer) 178775 last month.
- 17895 KUWAIT RK in Urdu 1604, chants, tlks, trilling flutes, vocals (Jordan PA 12/28)
- 21485 VATICAN STATE VR in IT 1100, bells IS, sermon by Pope, //17865 (Wood HI 12/8)
- 21490 AUSTRIA RAI in FR 1610, Hit Parade pgm, g (Figliozzi NY 12/10)
- 21495 SAUDI ARABIA BSKS in AR 0807, ID, azan, f (Wood HI 12/28)
- 21505 CZECHOSLOVAKIA R. Prague in EG 1530, fqys, sked, nx (Zilmer NM) in EG 1534, nx re Cuba's anniversary of revolution, ID, story contest, f (Cichorek NJ 1/2)
- 21550 SEYCHELLES(p) BBC relay in SH 1540, nx re Chinese attacks on African students, no break 1600, into opera, vg (Sheedy CA 1/4) ED: All Swahili xmsns by BBC that are listed in WRTH 1989 are xmt'd from Seychelles. Ergo, most likely that site.
- 21555sbb SWEDEN RS in SW 1330-1600\*, dramatic orations, class & Xmas mx (Jordan PA 12/24)
- 21560nf COSTA RICA R. for Peace Int'l in EG 2140, tlks, p (Snyder NY) in EG 2207, interviews, severe distortion of sig, ID, San Francisco mailing address (Golden NY)
- 21595 PAKISTAN RP in Burmese 0730, azan, ID, g (Wood HI 12/31)
- 21610 JAPAN RJ in EG 0318, cmntry on Armenian housing, JP movie ind. (Tuchscherer WI)
- 21690 SWEDEN RS in SW 1155, sked, IS 1157, multilingual ID's, g (Wood HI 12/8)
- 21720 PORTUGAL R. Free Europe in CZ 1658, TC & ID 1700, into nx, g (Cichorek NJ 12/4)
- 21740nf AUSTRALIA RA in EG 2242, local pop mx, ID 2245, nx, p (Jordan PA 1/6)
- 21750nf UNITED KINGDOM BBC in EG \*1055, IS, world nx, g (Wood HI 12/8)
- 25850 DENMARK RD in DN \*1400-1453\*, IS, ID in EG, into DN pgm, world & national mx, children's chorals, fqys, ID, NA, f (Jordan PA 12/22)

\*\*\*\*\*  
 Please check the Jan. FRENDEX for a more complete update since several loggings were repeats of those reported last month and thus were not listed above.

Thomas R. Sundstrom	Telex:	6502446376MCI UW
PO Box 2275	MCI Mail:	244-6376
Vincentown	The Source:	BCF811
NJ 08088-2275	Compuserve:	(send via MCI Mail)
	Packet Radio:	W2XQ @ WB2MNF
609-859-2447	Pinelands RBBS:	609-859-1910

THANKS to WRTH editor Andrew Sennitt for the 1989 WRTH INDUSTRY AWARD of Best Computer Accessory: Shortwave Database! The award was based upon the quality of the SWEC program and data that produces these listings in FRENEX and the Pinelands RBBS. The very pleasant surprise was heard on Media Network mid-month, followed by calls from Jonathan Marks and Lou Josephs.

Mark February 24-26 on your calendar for the 2nd Annual Winter SWL Fest near Philadelphia. It looks like there will be quite a mob. More info elsewhere in these pages. Come join us for fun and festivities. Listen to the net on Sunday mornings, 15 UT, on 7240 kHz for late-breaking information.

If you haven't picked up the 1989 World Radio TV Handbook yet, do so. The editorial offices have been computerized and the result is that the publication is better than ever. All the major houses -- Gilfer, Universal SW and others -- are now shipping.

Notes in no particular order: Iraq to NA/SA on 9515 announces 01-03 but noted from Jan 2 on at 0230-0430 UT. I can hear the parallel 7280 outlet to India and Pakistan toward the end of the two hour block. Deutsche Welle has 9515 covered earlier in the evening. Thanks to a tip from Bob Brown v 2m, I heard the cry of the fish eagle on R Zambia... quite an interval signal. Bob also alerted me to the clandestine Voice of Tomorrow with the IS of the cry of the wolf. We both heard the Voice of Ethiopia on Jan 22 at 1830 UT on 9660. Thanks to John Carson of OK for the info from RCI Northern Services and Australia.

A flare at 1917 Jan 27 upset things, and Bob Brown and I were trying to figure out who was the Arabic station totally overriding WWV on 10 MHz. Noted from 2030 on, the unknown was quite strong between 21 and 22 UT but faded dramatically by 2245. I found a parallel signal on 9835 that peaked at 40db/9 during the same time period, and neither of us could find any other parallels. It was not an internal product of our NRD-525s, also heard on a TS-940S.

Selected notes from Media Network of 1/26: The SLBC, Sri Lanka, will be providing 24-hour all night coverage of the general elections on February 15 commencing 1730 UT on 9720 and 11800 kHz to Europe. R Afghanistan to S&SE As 0900-1030 in English v USSR on 17720, 15435 kHz. Beijing's relay of the Swiss Broadcasting Corp at 1315 also includes 6550 kHz. In April, RCI starts relays of R Beijing (03-04 11845 to SA and 04-05 5960 to NA) and R Austria (05-06 6015 to NA). Spanish Foreign Radio is now announcing "Spanish National Radio External Service."

Changes entered between 12/31/88 and 01/27/89.

ENGLISH LANGUAGE SW BROADCAST SCHEDULES: By Start Time  
Compiled by Thomas R. Sundstrom, W2IQ

Start End Time Time (UTC) (UTC)	Country	Station	Freq #1	Freq #2	Freq #3	Freq #4	Freq #5	Freq #6	Freq #7	Freq #8	Target Area	Notes	Record Last Updated
0230 0430	Iraq	R Baghdad	9515	7280							NA/SA/Ind/Pakis	still ann 01-03 news/English M-F	01/08/89
0400 0410	Zambia	R Zambia	4910										01/14/89
0910 0940	Mongolia	R Ulan Bator	21770	12015									01/11/89
1100 1150	North Korea	R Pyongyang	11735	9977	9600								01/14/89
1200 1230	Mongolia	R Ulan Bator	12015	9615									01/11/89
1430 1525	Netherlands	R Nederland	17605	17575	15150	13770	5955						01/22/89
1445 1515	Mongolia	R Ulan Bator	15305	9575									01/11/89
1500 1700	USA	WHRI	21840	15105									01/02/89
1700 1800	USA	WHRI	15105	13760									01/02/89
1830 1855	Belgium	BRT	11695	5910									01/14/89
1830 1900	Ethiopia	V of Ethiopia	9660										01/22/89
1940 2010	Mongolia	R Ulan Bator	11870	9654									01/11/89
2200 2225	Belgium	BRT	9925	5910									01/14/89

Changes entered between 12/31/88 and 01/27/89.

ENGLISH LANGUAGE DX SHOWS: By Day of Week  
Compiled by Thomas R. Sundstrom, W2IQ

Shortwave DX Program	Show Xesn Start Time	Country	Station	Freq #1	Freq #2	Freq #3	Freq #4	Freq #5	Freq #6	Freq #7	Target Area	Notes re DX Show	Record Last Updated
** DAY OF THE WEEK: Sunday													
DX Spot	1930 1900	Spain	Spanish Nat'l R	15375	15375	11790	9765				Afr/ME/Eu		01/01/89
DX Spot	2130 2100	Spain	Spanish Nat'l R	11790	9765						Eu		01/01/89
** DAY OF THE WEEK: Monday													
DX Spot	0030 0000	Spain	Spanish Nat'l R	11880	9630						NA		01/01/89
DX Spot	0130 0100	Spain	Spanish Nat'l R	11880	9630						NA		01/01/89
DX Spot	0530 0500	Spain	Spanish Nat'l R	9630							NA		01/01/89

2nd ANNUAL WINTER SWL FESTIVAL

When: February 25-26 1989. Hospitality room will be open Friday evening.

Where: Holiday Inn  
Sumneytown Pike  
Kulpsville, Penna 19443  
215-368-3800

Exit 31 of the PA turnpike NE Extension - Lansdale interchange.

There is limo service from Phila. International Airport directly to the Holiday Inn.

What: The Winter SWL Festival is an educational as well as social event. We hope you can join us for a weekend of roundtable and panel discussions, lectures, and SWL chatter with fellow hobbyists. All areas of SWL interest including LW, MW, SW, Utilities, RTTY, etc. will be on the agenda. Last years Fest was a great success with 60 SWL's gathering for an enjoyable weekend. There will be door prizes as well as a freebie table. If you can participate as a speaker, panel discussion member, door prize contributor or whatever - please let us know.

Registration is \$30. This registration includes lunch and a dinner banquet (informal) on Saturday. Should you desire to omit the meals the registration is \$15. Please register by February 10, 1989. Checks should be payable to WINTER SWL FEST. Registration for hotel room should be made directly to the Holiday Inn - As soon as possible! Special rates \$55 single, \$59 double. Our function code with the hotel is WINTER SWL FEST. Please refer to this to get the special room rates. Listen to the ANARC SWL Net on 7.240 LSB at 1500 UTC Sundays for up to the minute info.

Please submit the following with your registration to:

Winter SWL Festival  
PO BOX 591  
Colmar, PA 18915

-----

Name \_\_\_\_\_

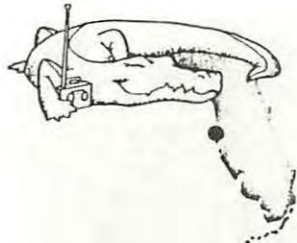
Address \_\_\_\_\_

City \_\_\_\_\_ State \_\_\_\_\_ Zip \_\_\_\_\_

Phone \_\_\_\_\_

Interests \_\_\_\_\_

Banquet - Check one: Roast Beef \_\_\_\_\_ Chicken \_\_\_\_\_



## ANARC 1989

P.O. Box 272301  
Tampa, Florida 33688 U.S.A.  
Telephone (813) 384-2354

### NEWS RELEASE

October 24, 1988

For Immediate Release

### ANARC 1989 TO FEATURE CARIBBEAN THEME

The 1989 Convention of ANARC (the Association of North American Radio Clubs) will be held in the southeastern United States for the first time in ANARC's history.

The venue for ANARC 1989 will be the Dolphin Beach Resort in the city of St. Petersburg Beach, on the west coast of the U.S. state of Florida. Appropriately, ANARC 89 will have a very definite Florida/Caribbean/Latin American flavor.

The convention will officially begin on Friday, July 14th, with an outdoor poolside reception sponsored by the World Radio TV Handbook, featuring traditional Caribbean island drinks and a steel band.

On the agenda for Saturday, July 15th, are sessions dealing with Latin American DXing and QSLing techniques, clandestine broadcasting in Latin America, and international radio news reporting in the Caribbean.

On Sunday, July 16th, Andy Sennitt will moderate the World Radio TV Handbook Quiz, which will have a Caribbean and Latin American emphasis. There will also be time for convention participants to enjoy the seven-mile-long (that's 11 kilometers) white sand beach on which the convention hotel is located.

Those who can stay around on Monday, July 17th, may take part in an optional tour to Disney World and the EPCOT Center in Orlando, Florida -- the world's most popular tourist attraction.

For complete information sheets and registration forms, please write to:

ANARC 1989  
P.O. Box 272301  
Tampa, Florida 33688 USA.

All DXers and shortwave listeners are welcome to attend, regardless of whether they are members of ANARC clubs.

\* \* \*

ANARC 1989  
P.O. Box 272301  
Tampa, Florida 33688 USA  
Telephone (813) 384-2354



Dear Friends:

Thanks for your inquiry regarding the 1989 ANARC Convention. We sincerely hope you'll be joining us in St. Petersburg Beach, on Florida's sunny Gulf Coast, for what we expect to be the largest ANARC convention ever.

ANARC 1989 takes place Friday-Sunday, July 14-16, at the Dolphin Beach Resort, located directly on a seven-mile-long white sand beach. St. Petersburg Beach is on the west coast of Florida, in the central part of the state. It is easily reached by bus from Tampa International Airport, consistently voted the nation's favorite and most efficient airport. Those who drive will find St. Pete Beach easily accessible via Interstate Highways 75 and 275.

ANARC 89 will be a family-oriented event. While dad (or mom, as the case may be) is taking in the radio convention, mom (or dad) and the kids can enjoy the beach, the hotel swimming pool, parasailing, waterskiing, deep sea fishing, shuffleboard, miniature golf and various other activities at or near the Dolphin Beach hotel. Walt Disney World/EPCOT Center — the world's most popular tourist complex — is located about 90 minutes away, and buses will pick you up and drop you off right at the Dolphin Beach. We might also mention the other tourist attractions like Busch Gardens, Sea World and the Kennedy Space Center, which are all within easy driving distance (or bus rides). For those who want to make a Florida vacation out of ANARC 89, the Dolphin Beach Resort is offering convention delegates the special ANARC room rate for as many days as desired both before and after the convention.

As for the convention program itself, it's shaping up roughly as follows:

#### Friday, July 14

- 1000-1800 Registration and exhibits by stations, clubs, manufacturers, publishers, etc.  
1900-2100 An Island Welcome — Poolside reception with traditional Caribbean drinks and hors d'oeuvres. Entertainment provided by a steel band.

#### Saturday, July 15

- 0900-1800 Registration and exhibits, plus a variety of seminars on topics related to all aspects of radio listening and communications. Possible topics include: Shortwave Broadcasting to and from the Caribbean, the State of Clandestine Broadcasting in Latin America, Latin American DXing Techniques from the Experts, and Florida's Unique Utility Stations. There will also be seminars for beginners and newcomers to long-distance radio listening.  
1900-2000 Poolside Cash Bar  
2000-2300 ANARC Banquet — Dinner will consist of Florida and Caribbean specialties. This will be followed by the annual ANARC award presentations and a keynote speaker or other entertainment.  
The final item will be an ANARC raffle. Depending on the weather, the banquet may be held indoors in the Royal Dolphin Room overlooking the beach. or outdoors around the pool.

Sunday, July 16

- 1000-1100 World Radio TV Handbook Quiz, moderated by Editor Andy Sennitt  
1130-1300 International Broadcasters Forum, with representatives of all shortwave stations present  
1300- Official Closing, followed by optional sightseeing tour or a lazy afternoon on the beach.

Monday, July 17

An International Broadcasting Conference will take place for broadcasters and other shortwave professionals. For everyone else, there will be an optional all-day trip to Disney World and EPCOT in Orlando.

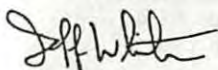
We hope you'll be among those taking part in ANARC 89. If you have plans to attend, or even if you're just considering it at this point, we urge you to send in your registration form now. We are expecting a record crowd, and there are only 150 rooms available for us at the Dolphin Beach Resort. If we exceed that number, we'll have to book some people in adjacent hotels (also on the beach, and at the same price). So to ensure the best possible accommodations, please make your reservation now. Send no money; you'll be billed in April of 1989. At that time, you will be able to amend or cancel your reservation if necessary.

If you have any questions or need further information, write to:

ANARC 1989  
P.O. Box 272301  
Tampa, Florida 33688 USA

Or you can call the convention chairman, Jeff White, at telephone number (813) 384-2354. (That number is in St. Petersburg, Florida.)

All the best, and we look forward to seeing you in St. Pete Beach next July!



Jeff White  
1989 ANARC Convention Chairman

P.S. Please note that all of this information is preliminary. Agenda, prices, etc. are subject to change. However, we will do our best to maintain prices at the levels indicated.

1989 ANARC CONVENTION  
Registration Form

Please fill out and return this form to: ANARC 1989, P.O. Box 272301, Tampa, Florida 33688 USA. You will receive a confirmation by return mail. Send no money now; you'll be billed in April 1989. At that time, you can make last-minute changes or cancellations with no penalties.

Name \_\_\_\_\_

Address \_\_\_\_\_  
\_\_\_\_\_  
\_\_\_\_\_

Number of Persons in Your Party: \_\_\_\_\_

Names of Additional Persons in Your Party (besides yourself): \_\_\_\_\_

CONVENTION REGISTRATION FEE: US\$25.00 per person; \$40.00 per family, regardless of number of persons. (You only need to pay the family rate if your spouse or other members of your family plan to participate in convention sessions, the Friday night reception, etc.) Please indicate the total amount you owe for Registration Fees: \_\_\_\_\_.

BANQUET FEE: \$25.00 per person. Please indicate:

Number of persons in your party who will attend banquet: \_\_\_\_\_

Total amount you owe for Banquet Fees: \_\_\_\_\_.

HOTEL ACCOMMODATION: The special convention rate is \$50.00 for a Standard room. Poolside rooms are available for \$58.00 per night, and Gulffront rooms (facing the beach) are \$66.00 nightly. You may have up to 4 people in each room at no additional charge. Please indicate which type of room you desire, and which nights you wish to reserve it for:

___ Standard (\$50/night)	Please circle the nights you will be staying at the hotel:
___ Poolside (\$58/night)	July 9 10 11 12 13 14 15
___ Gulffront (\$66/night)	16 17 18 19 20 21 22

REMARKS, QUESTIONS, OR SPECIAL NEEDS (For example, vegetarian or other special diets; handicapped attendees who desire first-floor rooms; broadcasters who need studio facilities; exhibitors who need table or display space; seminar topic suggestions; etc. Also let us know if we can help you with car rentals or other travel arrangements.):

FOR IMMEDIATE RELEASE

# DXER'S GUIDE TO LATIN AMERICA *1989 Edition*

To identify any of the hundreds of South American and Central American shortwave stations, DXers have had to rely on a variety of sources, including handbooks, DX/SWL bulletins and band surveys submitted by other DXers.

Now there's a special publication available from *FINE TUNING*, North America's premier DX organization, that is a comprehensive guide to monitoring Latin American shortwave stations.

The DXER'S GUIDE TO LATIN AMERICA provides listeners with an up to date listing of all shortwave stations from Central & South America. More than 400 stations are included. All stations are listed by country and then by frequency. Complete operating schedules (where noted) are given, as well as QSL information.

The 1989 Edition also includes, Peruvian Maps For The Dxe, station photos, Shortwave Broadcasting In Central America, Don Moore's "DX Thank You Lab", and rare QSLs from the Committee To Preserve Radio Verifications.

The DXER'S GUIDE TO LATIN AMERICA is over 50 pages in a 8.5 x 11" format and bound with a plastic spine. Copies are available for \$5.00 in North America. Foreign orders are \$8.00 *US FUNDS ONLY*. (Include Airmail postage).

**AVAILABLE FROM: FINE TUNING SPECIAL PUBLICATIONS  
RRT #5, BOX 14  
STILLWATER, OKLAHOMA 74074 U.S.A.**

DXER'S  
GUIDE TO  
LATIN AMERICA



**NORTH AMERICAN SHORTWAVE ASSOCIATION**45 Wildflower Road  
Levittown, Pennsylvania 19057FIRST CLASS MAIL  
U.S. POSTAGE  
PAID  
Levittown, PA  
Permit No. 319**FIRST CLASS MAIL****NASWA****"UNITY AND FRIENDSHIP"****PUBLISHES FRENEX MONTHLY****NASWA MEMBERSHIP FEES:**

First Class North America .....	\$18.00
Overseas - Surface Mail .....	\$18.00
Airmail to Central America, Caribbean, Venezuela and Colombia .....	\$25.00
Airmail to South America and Europe .....	\$27.00
Airmail to Asia, Africa and Pacific .....	\$30.00

All remittances must be in U.S. Funds and mailed to:

**NASWA, 45 Wildflower Road, Levittown, PA 19057, U.S.A.****Dxtra**

Besides FRENEX, NASWA also publishes Dxtra... a mid-month newsletter with the very latest DX news while it's still news. It is available only to NASWA members:

**DXtra SUBSCRIPTION RATES PER YEAR:**

North America (First Class) .....	\$4.00
Overseas (Airmail) .....	\$6.00
Sample copies of FRENEX and Dxtra are available for:	
North America .....	\$1.00
Overseas .....	\$2.00

**EXECUTIVE DIRECTOR** — R. Charles Rippel, 1272 Parkside Pl., Virginia Beach, VA 23454  
**PUBLISHER & BUSINESS MANAGER** — Bill Oliver, 45 Wildflower Rd., Levittown, PA 19057  
**CONTACT** — Steven G. Moye, 178 Bartlett Ave., Cranston, RI 02905  
**EASY LISTENING** — Alex Balman, 300 Hill St., Apt. 6, Boone, NC 28607  
**DXERS FORUM** — Rowland Archer, 5524 Hawthorne Park, Raleigh, NC 27613  
**TECHNICAL TOPICS** — Ted Benson, 14705-B Watsonville Rd., Morgan Hill, CA 95037  
**LISTENERS NOTEBOOK** — Glenn Hauser, Box 1684, Enid, OK 73702  
**OSL REPORTS** — Sam Barto, 47 Prospect Place, Bristol, CT 06010  
**DXTRA** — Bob Hill, 15 Stirling St., Andover, MA 01810  
**DISTRIBUTING EDITOR** — John Kapinos, 86 S. Quinsigamond Ave., Shrewsbury, MA 01545  
**LOG REPORT A** — Mike Harris, P.O. Box 294, Pickerington, OH 43147  
**LOG REPORT B** — Sheryl Paszkiewicz, 1015 Green St., Manitowoc, WI 54220  
**LOG REPORT C** — Jerry Ervine, P.O. Box 5204, Hidalgo, TX 78557  
**LOG REPORT D** — Wallace C. Treibel, 357 N.E. 149 St., Seattle, WA 98155  
**ENGLISH SCHEDULES** — Tom Sundstrom, P.O. Box 2275, Vincentown, NJ 08088  
**SCOREBOARD** — Jerry Lineback, 3959 Castle St., Douglasville, GA 30134  
**AWARDS PROGRAM** — John Kapinos, 86 S. Quinsigamond Ave., Shrewsbury, MA 01545  
**COUNTRY LIST** — Don Jensen, 5204 70th St., Kenosha, WI 53142