

FRENDX

EMISORAS ONDAS DEL DARIEN

Turbo - Antioquia



RADIO SURCOLOMBIANA TODELAR



RADIO MACARENA



LA EMISORA DE
LOS LLANEROS

10.000 VATIOS
EFECTIVOS EN
ANTENA PARA
MAYOR CUBRIMIENTO

CARACOL NEVA

LA EMISORA BASICA EN EL HUILA DE
CARACOL PRIMERA CADENA RADIAL
COLOMBIANA
Calle 69 Nº 4-59



EMISORA
VOZ
de los
centauros

la voz del cinarucu

ARAUCA - COLOMBIA - SUR-AMERICA

RADIO



SANTA FE

LA VOZ DEL HUILA

"SIEMPRE EN EL AIRE"
LA RADIO RELOJ DE NEIVA
Oficina: Carrera 3ª Nº 6-25



radio sutatenza



Calling All DXers!

THE 1986 CHICAGO DX CONVENTION

Feb. 7-9, Gurnee Holiday Inn
Route 132 and I-94, Gurnee, Illinois

CALLING ALL DXERS FROM ILLINOIS, INDIANA, WISCONSIN, and anywhere else... If you're looking for a way to shake the winter blahs, make plans to attend the winter DX event of the season -- **the 1986 Chicago DX Convention** -- sponsored by the Chicago Area DX Club the weekend of Feb. 7-9, 1986, at the Gurnee Holiday Inn just north of Chicago.

Why shovel snow when you can relax in a jacuzzi, or swim in the Holiday Inn's spacious indoor pool? Plus, you'll have the chance to meet some of the finest DXers from the Chicago and Milwaukee areas.

The registration fee includes a Friday night reception (8 p.m. to 11 p.m. -- all you can drink), Saturday banquet, plus a wide range of interesting and informative seminars and special events.

This is a convention for serious DXers, with sessions on hearing the rare stations, using audio filters and accessories, plus using the computer to enhance DXing. Guest speakers include Gerry Dexter, author of Clandestine Confidential, and Don Moore, who will discuss the Latin American shortwave scene, with slides from stations in Honduras, Ecuador, Peru, Uruguay and many other countries.

To register, send a check or money order for \$35 to Kevin Mikell, 241 North Hamlin Avenue, Park Ridge, IL 60068. If you plan to stay overnight, CADX has secured a block of rooms at the Holiday Inn for a special rate of \$40 per evening for a single, and \$47 per evening for a double. Hotel reservations must be made through the Holiday Inn either by phone (312) 336-6300, or by writing to 6161 West Grand Avenue, Gurnee, IL 60031. The registration deadline for both the convention and hotel rooms is **January 20, 1986. When making your room reservations, be sure to mention the special CADX rate!**

If you're a serious DXer, make plans to attend the 1986 Chicago DX Convention. When writing to Kevin, please provide him with a list of subjects you want to see covered by a seminar. We'll do our best to see that the topic is on the agenda -- volunteer lecturers will be welcomed! For more details, call Kevin Mikell at (312) 825-3608 or Austin Kelly at (312) 776-5144.

CONTACT

Editor: Stephen G. Moyer, 178 Bartlett Ave., Cranston, RI 02905 Phone: (401) 941-6497

It augurs well for the coming year that the first CONTACT of 1986 contains a very fine and interesting mix of letters. Before we begin, let me wish all of you a very happy New Year-- may your geomagnetic indices be low and your sunspot numbers high and rising: i.e., good propagation to one and all.

Continuing with the news of a new and ill-advised bill which would make it illegal for 'unauthorized personnel' to receive and listen to certain kinds of transmissions, we have the following letter from F. A. Dunlap(WASTWF, Life Member, ARRL) written to Sen. Phil Gramm (R-Texas). This letter was forwarded to me by Duke Alexander (Radio Earth, Texas Bureau, Houston, Texas):

The "Electronic Communications Privacy Act of 1985," introduced by Sen Leahy (D-VT) and Rep. Robert Kastenmeier(D-WIS), is a good example of misleading legislation. It pretends to be an anti-wiretapping bill, but in reality it would take away a very basic Freedom of all Americans. This [bill] tries to extend anti-wiretapping laws to include cordless and mobile/cellular telephones. The average person is apt to ask: "What's wrong with that?" Quite a lot.

These devices, in order to be "free from wires", must use radio transmitters. In effect, each one is a mini-radio station. Radio signals can be received by anyone with radio sets that can tune-in to the transmitter 'channel.' Some cordless phones can be picked up on shortwave sets sold at the nearby Radio Shack store. Some cellular phones can be received on the sound portion of former UHF television channels 83-86! Chances are YOU have a set like that. If this bill is passed, believe it or not, YOU could be guilty of a FEDERAL OFFENSE if you accidentally overhear a telephone conversation(!). Obviously, the manufacturers of the telephones would like to tell their customers that their "privacy is guaranteed by Federal law." It is far less expensive to lobby for this bill than to do what all before have had to do to 'secure' the signals (i.e., make them unintelligible to the casual listener by adding a device called a 'scrambler.')

BUT WE CANNOT SACRIFICE A FUNDAMENTAL AMERICAN FREEDOM TO ACCOMMODATE GREEDY COMMERCIAL INTERESTS. There are adequate laws on the books against espionage and fraudulent misuse of radio and TV signals. This bill would ban reception of certain signals BY AVERAGE CITIZENS--IN THEIR OWN HOMES, who listen for entertainment or hobby purposes. Never in history has the U.S. had such a law. We would join the Soviet Union and Saudi Arabia and other totalitarian States. Supporters of this bill, who do not understand such matters, probably think the 'exceptions' are adequate (amateur, CB, 'walkie talkies,' etc.) THEY ARE NOT. There are many types of radio signals that radio listeners enjoy other than the ones 'exempted': so many that a list is impossible to compile. For a further explanation I must refer you to Senator Barry Goldwater. Please join him in defeating this dangerous legislation. Thank you, etc...

The point is this: the air-waves are, and ought always to be, public property. If broadcasters, of whatever kind, wish to engage in secure communications, then it is up to them to employ appropriate planning and technology and to effect the needed level of security. They most definitely ought not to engage in a seedy manipulation of the law into an ex post facto protection of business against its own questionable, short-sighted and penny-pinching practices. I hope that you, too, will write to your Representatives and Senators and speak out against this frightful piece of proposed legislation.

One of the principal charms of SWL lies in its potential for teaching the peoples of Planet Earth about each other; for giving insights into what things are like in places far removed

from our own. The next two letters continue in that tradition. First, an inside look at SW broadcasting in New Zealand; this letter comes from Bill McMillan (Titahi Bay, New Zealand):

As the Superintendent in charge of broadcasting transmitter facilities at Titahi Bay near Wellington and also as a former Superintendent at Quartz Hill receiving station, I was interested to read in FRENDX Bill Whitacre's account of his visit last December (October 1985 issue, pp.22-23 "New Zealand Reflections").

With only two elderly 7½ kW transmitters it's obvious that we can't compete with other better funded shortwave broadcasters, but some comments on Bill's recollections may be of interest to your readers.

The two shortwave transmitters were built by Amalgamated Wireless Asia Ltd. in Sydney in 1944.45 (not WW1) and were designed as multipurpose communications transmitters capable of operating on any frequency in the 4-22MHz range. They are high level plate-modulated transmitters which needed little modification for broadcasting use. Although they are 40 years old and some wiring certainly is brittle, it could be pointed out that through the efforts of the local maintenance staff the total program time lost from breakdowns is insignificant in comparison with time lost in the target reception areas due to interference or propagation problems. Backup transmitters are hardly justified at this power level. These old transmitters are certainly a tribute to their Australian manufacturers, bearing in mind wartime supply problems.

Depending on propagation and schedule requirements which are coordinated by Quartz Hill, the transmitters can be operated on any frequency in the 6, 9, 11, 15 and 17MHz bands. Frequencies are chosen for best reception in the target areas: the South Pacific islands and eastern Australia. The aerial arrays used on the 11, 15 and 17MHz bands comprise two bays and two tiers of halfwave dipoles with halfwave parasitic reflectors. On the 6 and 9MHz bands three different types of aerial are currently in use: an array comprising four co-planar squares one quarter wavelength per side with reflectors; a dipole array with two bays, one tier and parasitic reflectors; and a folded dipole. The arrays are on bearings of 30° (Pacific) and 285° (Australia).

In the last few years most of the arrays have been rebuilt and four support masts have been replaced. Aerial maintenance is not as casual as implied and it should be noted that the site is coastal, with frequent onshore salt-laden winds of up to 60 mph or more for extended periods. We are sorry about the sheep and cattle droppings, but these don't seem to have much effect on radiation. [I hope that you'll forgive the unnecessary intrusion of persiflage at this point, but I am quite certain that there is a limerick lurking in this matter of scatological ground. Any takers?--sgm]

Bill didn't get it right about the medium-wave transmitters not having backup transmitters. In fact three of the four services have dual transmitters operated in parallel to provide a no-break service. For instance, 2YA on 567kHz has two 50kW transmitters feeding a combining network to produce its normal 100kW output. The exception is the 60kW transmitter used for the "Concert" programme on 657kHz which has a 10kW standby transmitter. It is planned to replace all the MW transmitters with solid-state units within the next few years.

The future of the shortwave service lies with the Government. In the meantime, if our transmitters can't be heard at any particular time, it's very much more likely to be [due to] reception conditions than transmitter or aerial failure.

H.D. Norman (Chairman of the Board, NDXE Global Radio; Opelika, Alabama) has very kindly forwarded this letter, and the problem it describes, for our attention. Mr. Norman writes:

I recently received this letter from the President of the Africa DX Club. It tells a sad story of how they have curtailed operations for lack of a typewriter. Please make your members* of this circumstance. I am very sure we can help in some way. Please write directly to the address in Nigeria. Best wishes for the upcoming Holiday Season.

Here, then, is the letter from Friday I. Okoloise:

*Missing word: "aware..."

Your letter [he writes to Mr. Norman] (or better NDXE information) was received on the 11th day of November. It was postmarked 28 October 1985. Thanks a million for the letter.

In fact I had wanted to write to you several months back, since I first heard your telephone conversation with Jonathan Marks of Radio Nederland, Hilversum. I am interested in your new innovation (I call it) STEREO on shortwave!!! I am a Technologist here at the School of Telecommunication (am a student studying radio-- it is fascinating to broadcast stereo via SW so I am interested in NDXE). Anyway, I have been busy here studying (and yet publishing DX AFRIK!!) so that I was heavily occupied: if I am not resting, I am reading, if not, I am DXing... The list goes on and on, so that at the end of the day I am left with little or no power (so to speak!)

Anyway, thanks for writing. For some months now, we've not been able to produce DX AFRIK due to economic problems over here. Numerous!!! So I stopped further printing of the magazine. By the grace of God, we will be right back sooner or later. However, we need a lot of help from people to enable us to continue. At the moment I don't have a typewriter, so this makes the typing of the magazine difficult. I pay some outside help to type or cut the stencils. Also I am all alone using my money for duplicating paper, stencils, ink, postage, etc. The number of subscribers has increased by 95% within the last four to five months. We are nearing 400 as of today. Anyway, most members are from USA and Europe. Nowadays, the Asian continent is increasingly becoming interested (judging from the letters I have received so far). I know the future will be good by the grace of God.

When DX AFRIK is back again, I will tell readers about NDXE, my dear Norman. Thank you for writing. Write again soon.

Thank you.

Your Friend,
FRIDAY I. OKOLOISE
Block A, Room 61-US
School of Telecommunication
P. M. B. 3198
Kano, Kano State
NIGERIA

It would be a fine beginning to the New Year if we were to be of some substantive assistance to this struggling and hard-working organization. I would be more than happy to coordinate any such effort.

Along not terribly dissimilar lines comes a letter from Gerry Bishop (APO, San Francisco, California) with an intriguing proposal:

Here's a bizarre idea with little in the way of effort compared to reward. Why don't we, NASWA, make an annual presentation of a 500W transmitter to a station with no current SWBC capability, but one that would be interested if the equipment were available? We would supply the transmitter; the station would have to take care of maintenance, antennas, and all operating costs.

Several possible candidates come to mind. Maldives is one, though almost out of range from NAm. Any Panamanian station could be considered, as well as most Caribbeans. Of course, upping Tristan de Cunha to 500W might answer a lot of prayers. Or how about a recent independent, or soon to be, like Palau.

I have no idea what the cost on this would be, but the good will and friendship that NASWA can create might make it worthwhile to investigate. The ability to communicate abroad is something most nations seem to desire.

This fascinating (and, so far as I am aware, quite novel) suggestion deserves comment. Thank you very much for it, Gerry. Now, NASWAers, it's your turn -- what do you think? The notion of friendship is, after all, rightly a part of the NASWA motto -- "UNITY AND FRIENDSHIP."

From faithful correspondent Tim Davisson (P.O. Box 255, Cuyahoga Falls, Ohio 44222) comes the following letter which takes up a number of previously touched-upon topics:

In response to Erich Schulman's comments in 11/85's column... Erich believes people who write stations for QSL cards are not regular listeners and never listen after getting the QSL card any way. My question to Erich is... if requiring 2 or 3 (etc.) rep-

orts to get a QSL does NOT force listenership, then why does a station make those requirements?(...Since we QSL folks don't ever listen again.) No offense Erich, but your theory doesn't make much sense to me. I collect QSL cards, and I am a regular/semi-regular listener! QSL cards, program schedules, pennants, etc., ARE fun to collect, but listening to the programming is fun also. What's wrong with both????? After working 15 years in radio programming, I assure you that requiring multiple reports to get a single QSL card IS a planned method of forced listenership!

WOW...after all the hassle with new digital-readout receivers and their reliability; battery life; etc., I'll keep my old 1975 Drake SPR-4! I tried the much-hyped (by dealers) Sony ICF-2010 a few months back. The AM section is OK, FM is poor, and shortwave is good...not great. Neat package, but for nearly \$300...! Hmm.

Final comment... Shortwave listening is a hobby, not a lifestyle. It's a great hobby at that. I equate SWLs that spend much of their days at the dials with teenagers who listen to the local rock station for hours and hours every day. The reason most adults don't listen to shortwave hour after hour daily is simple: most of us work, have families, obligations, other interests. Not that we are casual, or burned-out on shortwave! I'd love to have more time to spend, but there's these bills that come in monthly. Just like the teenager who can't figure out why his 35-year-old parents are unaware of the latest Wham release [on the very] day the record hits the airwaves: we still LOVE to rock 'n' roll...we just don't have as much time! Hi!

Anybody want to correspond, swap coverage maps, aircheck cassettes? If so, Stephen, please list my address! Thanks and 73's.

Thanks for the letter, Tim. Somehow, though, I cannot quite bring myself to accept your equation of determined SWLers with teenagers (of whom there are, in fact, many fine SWLers) who are monomaniacal about the latest popular music. It's difficult for me to see Larry Magne, or Tony Jones, or Glenn Hauser, or any number of other people I can think of, as analogues of rock-crazed teenagers. And there is a group of people for whom a more-or-less full-time preoccupation with shortwave is a positive blessing: retirees. I know several who have gained virtually a new lease on life by being able to be in almost constant touch with what's going on in the world at large. As one of them said to me not too long ago: "It's a lot more interesting--and comfortable--than a park bench; that's where most people think we want to spend our time. Can you imagine?!"

Some interesting, and potentially reassuring, news on the ICOM lithium back-up battery problem has come to my attention. With my thanks, I have been allowed to reprint from the ICOM Newsletter (Publisher/Editor Robert Pohorence N8RT, International Radio, Inc., 1532 S.E. Village Green Dr., Suite L, Port St. Lucie, Florida 33452) the following information:

RAM UNIT BACK-UP BATTERY LIFE SPAN

Here is some information that I received from a friend who works for ICOM in reference to the lithium batteries used in the EX-314 RAM Unit in the ICOM radios.

1. Calculation value from the manufacturer's specifications under worst case conditions: uPD444C-1uA; uPD7372-1uA; 1SS53 (diode)-0.1uA; 0.1uF 25V-0.003uA; P.C.B.-Ignore; Total current-2.103uA; Battery life-About nine years.

2. Calculation value under ICOM factory specifications: The total current of the RAM Unit = 100nA (less than 100 nanoamps!). The current is measured by a special ICOM jig and all radios have been checked. Battery life about one hundred and eighty (180) years. [My underlining--sgm]

3. Calculation value under actual average current: Actual average current using ICOM special jig = 10 to 30 nA. If we take a maximum current value of 30nA - Battery Life = about six hundred (600) years.

NOTE: Lithium battery capacity will vary. Under normal storage conditions, the lithium battery capacity will be 91% of its maximum value after ten years. That means, the battery capacity will drop to 91% of 160mAH. These are extrapolated values since test data are only available for seven years from the battery manufacturer."

My very great thanks to Robert C. Gill (WA4ENU, St. Petersburg, Florida) for passing on this information. In an attached note he observed: "Stephen--I think the ICOM battery will outlast all of us." I hope so...

Just enough space left to thank all of those fine folks who have taken time out from busy schedules to write; and to thank loyal and supportive readers. Once again, a happy New Year to everyone and many cordial 73s--



YOU ARE CORDIALLY INVITED

TO PARTICIPATE IN A NEW SHORTWAVE ADVENTURE.

**NASWA & KCBI ARE TEAMING UP FOR RADIO CONNECTION
AND**

WE NEED YOUR INPUT

YOU KNOW WHAT MAKES A DX PROGRAM WORK. NOW'S YOUR CHANCE TO STRUT YOUR STUFF ON THE RADIO BY PRODUCING YOUR OWN RADIO SEGMENT TO BE AIRED ON KCBI. THREE MINUTES, ON CASSETTE, IS ALL WE NEED. EQUIPMENT REVIEWS, PROGRAM REVIEWS, STATION BROADCAST PROFILES-- YOU NAME IT-- IF IT IS BROADCAST RELATED, WE NEED IT!!

FOR MORE INFO CONTACT:

**NICK PAPPAS
8570 CEDAR COVE DRIVE
ORLANDO, FLORIDA 32819
(305) 351-4520**



Easy Listening

Editor: Alex Batman, 4636 Alvin Dark, Apt. 2, Baton Rouge, LA 70820

Deviating a bit from the usual custom, I'd like to discuss one or two more general topics this month that seem to be more newsworthy (as well as speculative).

RAI (Rome): As most SWL's know already, Rome's only English broadcast to North America is a twenty minute news program at 0100-0120, usually closing with an Italian popular song or two. Those who have been listening for some time also know that the woman who reads the news sometimes has her problems (I gather she's become rather notorious in shortwave circles.) Over the last few weeks of listening to RAI I've begun to develop a theory about why she has such problems. When she reads the news, she stumbles, she hesitates, and she frequently reads in a dry, boring monotone. Let me say that I do not mean to criticize her; in fact, she has my sympathy. I've begun to suspect that she is not reading an English news script, but translating from Italian simultaneously as she reads.

As an idea it makes sense (at least to me). Given that the English program is so short one might assume that RAI has a very small English language section (perhaps feeling the budget crunch many shortwave stations are feeling.) But I have noticed that every once in a while there is no English newscast at the regular time, and when there isn't, there is always a male announcer reading the news in Italian, never the young woman. I think it might mean that she was unable to come to work for some reason (or make a tape or whatever) and there's no one else to read the news in English. If that's the case, the script she reads from is most likely in Italian.

As for her pauses, they seem most frequent over place names and technical terms. Technical terms, of course, are understandably difficult to translate, and it seems logical that when you speak one language and know the name of a place in it, you do have to think for a minute what it's called in another language. (Even if I spoke Russian fluently, I suspect I'd have to pause any number of times to remember to say "Muscva" rather than "Moscow".) Secondly, she always hesitates longest before reading a new item (a much longer pause than necessary purely for spacing). I believe she's probably reading ahead to see where she might have problems with translation. Thirdly, the monotone in which she sometimes reads could be explained by the difficulty of concentrating on the translation, a difficulty which leaves her no time to worry about proper inflection.

And, as my clinching argument, I cite her accent, or more precisely her lack of one. Listen to her. Despite the difficulties she has in reading the news, she has an impeccable American accent. I'm even beginning to suspect that she is an American, one who has trouble with Italian, not English. We all know already how many shortwave stations hire non-native personnel for their foreign language sections, and it could just as easily be true at RAI as elsewhere.

Of course, this is all speculation at this point, but I'd like to know whether anybody else thinks it's likely. In the meantime I'm writing to RAI and asking whether she is an American, and even if she isn't whether she's translating directly from an Italian script. But I'm not going to hold my breath for an

answer. The first time I wrote to them for a QSL, it took seven months for a reply. (I'll include a couple more IRCs this time, but it still may take just as long.) While I'm waiting for an answer, however, I'd be interested in what other people think who have listened to the nightly RAI broadcast. (5990/9575)

RADIO HAVANA CUBA: Somewhere back in November, it seems, Radio Havana did a major revision of its programming directed to North America. They advertise it now as "Radio Havana Cuba's Dynamic New Programming", and it is rather innovative for shortwave although it has some features that were familiar on the old programming format (in particular the technique of taping two hour-long programs and then alternating them so that one series is on at 0000, 0200, 0400, etc. and the other on at 0100, 0300, 0500).

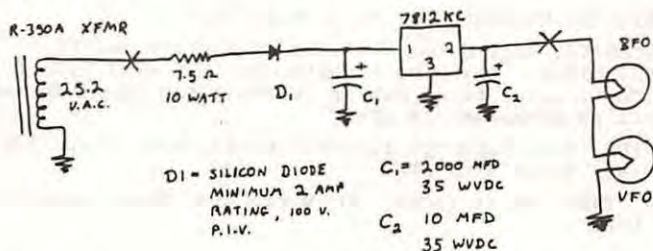
Most of the old feature programs have been dropped. ("Panorama", "Musical QSL", "From the Land of Music", etc.) The new programming begins, as usual, with a bulletin of world news. But this is then followed by a five minutes of sports news and then five minutes of "News About Cuba", a structure that reminds me somehow of the local newscast on American television. After the news (which ends around twenty minutes after the hour), there is almost no structured programming, but only a series of untitled interviews and music. There are some exceptions to this, however. "P.O. Box 7026" is now called "Mailbag" and is a nightly program aired somewhere between twenty minutes and ten minutes to the hour (one in the 0000 series and one in the 0100 series as far as I can tell). Each segment answers one question from a listener (instead of the three questions of the old fifteen minute format on Thursday nights). There also seems to be a program called "Spotlight on Latin America" on Tuesdays and Thursdays around 0130 (0330, etc), but since they do not always use the title, I'm not sure it isn't just a catchy phrase (like "News from the people's point of view", a phrase they use frequently).

As for the music, they have certainly expanded. Most of the music I heard on Radio Havana before November was traditional Cuban music. Now they play jazz, salsa, pops, etc., both Latin American and North American (including Barry White, Michael Jackson, etc.) There is even a Sunday night program called "The Jazz Place" (0100 or so, 0300, etc).

I'm afraid this is a rather incomplete report on Radio Havana Cuba's new programming, but time limitations have prevented it from being more exhaustive (that and the fact that they have not yet answered my letter of inquiry--but, I did give them rather short notice). In any event, I suspect they are rather eager to know what listeners think about the programming changes and would be grateful for comments. If you've been having trouble getting a QSL from Radio Havana (as I've had for some reason; this last letter was my third, all without replies), now might be an especially good time to write them, particularly if you comment on their new programming. (6100/6140/9740)

Bob Balna

Your three terminal regulator will mount right back in the hole with no drilling required if you use #4-40 screws and nuts. It is a tight fit, but it will work. Be sure to use the 7812KC regulator package. Remove one screw from the nearby tube socket remaining. Replace it with a screw long enough to go through a 7.5 ohm 10 watt resistor (the wirewound type which is hollow through its axis), and mount the resistor on that screw. One end of the resistor mounted as such makes a nice tie point for the diode and filter capacitor. If the hollow type resistor is not available, some sort of mounting bracket will have to be fabricated. Connect the regulator as indicated on the schematic. Check your wiring carefully before replacing the chassis and firing up the receiver. No adjustments are necessary. It is normal for the regulator chip to run warm to the touch but not hot. You should check yours for the first few minutes of operation after completion of the mod to make sure there isn't a goof somewhere. Replace the lid and have fun. No more ballast tube worries. Now, this is your editor speaking again, I have been using the old power resistor trick for my ballast tube replacement for sometime. As a rule my philosophy is "If it don't stink, don't stir it", but the mod from N4GSE reminds me that I should pull the covers and align my R-390A since moving to my new house so whilst inside I think a 7812KC will find its way into the circuitry.



While on the subject of the venerable R-390A FRANK LYONS writes to ask a question concerning what type of speaker to use with the R-390A. Well Frank, you can use any regular 8 ohm speaker you can get your hands on if you use the following method. Obtain a 155 volt to 12 volt power supply transformer, available at any Radio Shack, part No. 273-1385, current price \$2.79. Simply connect the primary (black) wires to your receiver and the secondary (red) wires to any 8-ohm speaker. This little go between will give you a reasonable impedance balance. By the way Frank writes that he is just getting back into SW after a long absence. Welcome back Frank. The hardware has changed but the fun remains the same.

Some of the folks writing to your humble editor have sent return postage, etc.. As a rule, time constraints make it hard for me to answer too many personal inquiries except those that come from women between 18 and 30 who are independently wealthy, own a Porche dealership and a liquor store and above all promise not to tell my wife!!!! Ahem... Actually most of the questions that pass this desk are of a general nature, of interest to many people and I fully intend to answer all these questions in the pages of this column. Any that I cannot handle will be dutifully referred to BAEA MAN GRID BIAS for metaphysical consideration.

Keep those cards and letters coming, folks!

73
Ship
 WB2GHA

NASWA Awards Program

Awards Chairman: John M. Kapinos, 86 S. Quinsigamond Ave., Shrewsbury, MA 01545

The following folks obtained NASWA Awards during the month of November 1985. Congratulations to all:

Danny DANKERT, Tustin, CA: All Continent QRP DXer (50 Kw); All Voice of America DXer

Ray NIEKAMP, Minneapolis, MN: South American Continental DXer; Ecclesiastic DXer

Betsy ROBINSON, Clinton, TN: World Wide DXer

Michael SCHMITZ, West Germany: European Continental DXer; European Continental DXPert; Asian Continental DXer; Soviet Sphere DXer, South American Continental DXer; Senior Ecclesiastic DXer; Ecclesiastic DXer; Senior British Commonwealth DXer

Winfred WEBB, West Germany: European Continental DXer; Ecclesiastic DXer; DX Centurian; World Wide DXer

John M. WILKINS; Wheat Ridge, CO: Maple Leaf DXer; Master British Commonwealth DXer

KAP's KOMMENTS

Congratulations to Dick Dickson of Goshen, OH, winner of our recent contest. The correct answer was Plovdiv, Bulgaria and the frequency I had in mind was 9700 kHz. There's not even a break in the carrier when they change from Radio Sofia to Radio Moscow Broadcasts. Interestingly Radio Moscow will QSL the Havana, Cuba site but not the Plovdiv site.

For folks working on the Soviet Sphere and Radio Moscow Awards, might we recommend The UHN Newsletter, published by Roger Legge, Box 232, McLean, VA 22101. The cost for 8 issues is \$3.00 in North America and \$4.00 Overseas, which rates is a "Kap's Best Buy".

We have some of Radio Moscow's own report forms in both English and Spanish available. SASE or IRC gets you a copy of one or both. Radio Moscow does prefer their own forms. When using them, make sure that you ask for the transmitter site on your QSL.

Our personal thanks to all who sent us Holiday Greetings. Muriel (Mrs. Kap) and I really appreciate them. Hope everyone had a good Season and that your fondest wishes were fulfilled.

Till next month,



NOBUAKI TAKAHASHI

高橋 伸明

ADDRESS: Room 6-604 Green-Heights, 4-5-37 Nishihara, Tanashi City, TOKYO 188, Japan.

住所 : 188 東京都田無市西原町4-5-37 西原グリーンハイツ6-604

Contribution to FRENDX

FACTS ABOUT NHK DOMESTIC SHORTWAVES

Hi, there. I sometimes find that FRENDXer reports his/her reception of NHK domestic program on shortwave. Yes, you can catch the shortwave from Japan and it's not a part of Radio Japan, the Overseas service of NHK. Then you may have questions about this service. What is this? The famous WRTH is not your help in this case. You can only find few informations under Japan.

This is a summary of my reports for DX TIME of Radio Japan. The program featuring NHK's domestic shortwave service was on the air on 14th. December, however, some of you did not have a time to tune to this program, I think. Here is the summary of my reports for FRENDXers. I hope this will help you to understand the domestic service in Japan.

First, the service is officially called as "Shortwave fixed station for program relay" or Hosochuukei-yoh Tampa Koteikyoku in Japanese. The purposes of the service are ; 1) Back up of voice relay circuit and communication channel between stations in an emergency.

Normally NHK's program is distributed to the regional stations over NTT (Nippon Telegraph and Telephone)'s circuit. The shortwave transmission backs up this. Usually it transmits NHK 1st. or 2nd. program based on the operation schedule. Table 1 lists the all stations registered as shortwave fixed station. The transmitter and receiver are located in each regional control stations, Tokyo and Fukuoka station.

Table 1

Station Name /Regional Control station	Power(W)	Frequencies(kHz) /Call Letters		Identification melody
Ebetsu/Sapporo	600	3970 (JKU20) 9535 (JKU22)	6005 (JKU21)	Sohran-bushi
Haramachi/Sendai	300	3259 (JKS20) 9535 (JKS22)	6190 (JKS21)	Tairyo-bushi
Shohbu/Tokyo	900 ⁺	3607.5 6175 9550		Tohkyo-ondo
Nabeta/Nagoya	300 ⁺	All are called as NHK SHOHBU 3970 6005 9535		Kiso-bushi
Mihara/Osaka	300	All are NHK NABETA 3377.5 (JKM20) 6190 (JKM21) 9535 (JKM22)		Gion-kouta
Gion/Hiroshima	600	3607.5 (JKG20) 6175 (JKG21) 9535 (JKG22)		Yasuki-bushi
Harita/Matsuyama	600	3970 (JKO20) 9535 (JKO22)	6005 (JKO21)	Nagoku-Tosa

Kasuga/Fukuoka	600 ⁺	3259 6005 9535	Kuroda-bushi
		All are NHK KASUGA	
Shimizu/Kumamoto	600	3259(JKQ20) 6130(JKQ21)	Itsuki-no-
		9535(JKQ22)	Komori-uta

 Marked + means single side band(J3E or USB) transmission.

Based on my reception experiences of these stations you cannot listen to any identification announcement from the transmitting station. The identification melody is defined as above, however, it will be used only in emergency case, I think. So you have no way to identify the location without checking both time and frequency on operation schedule. The schedule is as follows;

3259kHz	08:15 - 13:00UTC	JKS20	Program	1
3377.5	08:00 13:00	JKM20		2
3607.5	08:00 10:00	JKG20		1
	10:00 13:00	NHKS HOHBU		1
3970	20:00 06:00	NHKNABETA		1
	06:00 11:00	JKO20		1
	11:00 12:00	JKU20		1
	12:00 15:00	JKO20		1
6005	20:40 01:00	JKO21		1
	01:40 02:30	NHKKASUGA		1
	02:30 04:30	JKO21		1
	07:40 08:40	NHKKASUGA		1
	08:40 15:00	NHKNABETA		1
6130	20:00 15:00	JKQ21		1
6175	20:30 23:30	NHKS HOHBU		1
	00:00 08:00	JKG21		1
6190	20:30 03:30	JKM21		2
	03:30 08:00	JKS21		1
9535	23:30 00:00	JKG22		1
	01:00 01:30	JKO22		1
	01:45 02:05	JKU22		1
	03:00 07:00	NHKKASUGA		1
	07:30 07:45	NHKNABETA		1
	07:55 08:10	JKS22		1
9550	01:00 07:00	NHKS HOHBU		1

Regarding the verification policy I heard they have no common one. So it is fully depending on the people who received the report from abroad. If he/she is familiar with DXing and/or SWL, you can get the answer from the transmitting station.

Until next time, 73's and good listening !

FRENCH LA SURVEY OF SOUTH AMERICAN QSL's Received

January-December 1985

Compiled by Bill Plum

ARGENTINA

- 23 - RAE/R. Nac. de Buenos Aires
- 5 - R. Rivadavia
- 3 - LRA 36
- 1 - LOL

BOLIVIA

- 4 - R. Santa Cruz
- 3 - R. Nueva América
- 2 - R. Juan XXIII, R. San José, R. La Cruz del Sur, R. Panamericana
- 1 - R. Nac. de Cochabamba, R. Abaroa, R. San Miguel, R. Cristal, R. Altiplano, R. San Rafael, R. Progreso, R. El Cóndor, R. Em. Bolivia

BRASIL

- 30 - R. Nac. do Brasil
- 8 - R. Poti
- 5 - R. Aparecida, R. Nac. de Manaus, R. Excelsior
- 3 - R. Brasil Central, R. Bandeirantes, R. Df. de Amazonas
- 2 - R. Ed. 3 de Julho, R. Cl. Paranaense, R. Gaucha R. Borborema, R. Rio Mar, R. Cult. do Pará, R. Soc. da Bahia, R. Alvorada Paritins, R. Ribeirão Preto, R. Anhanguera
- 1 - R. Cacique de Soracaba, R. Cl. Varginha, R. Universo, R. Por um Mundo Melhor, R. Copacabana, R. Congonhas, R. TV Cult. São Paulo, R. Nac. da Amazônia, R. Marajoara, R. Journal do Comercio, R. Soc. Triangulo Mineiro, R. Cult. Araraquara, R. Globo, Rdf. Acreana, R. Guaiba, R. Em. Rural de Santarem, R. Globo de São Paulo

CHILE

- 4 - R. Agricultura
- 2 - R. Minería
- 1 - R. Patagonia, R. Nac., R. Nuevo Mundo, CCV

COLOMBIA

- 7 - R. Macarena
- 4 - LV del Llano
- 3 - R. Super de Medellín, LV del Guaviare
- 2 - R. Cinco, Em LV del Orinoco, R. Sutatenza Em. Nueva Granada
- 1 - Ondas del Darién, Ecos del Combeima, R. Sonar, Ondas del Meta, Ondas del Ortegua

ECUADOR

- 18 - R. Católica Nacional
- 9 - LV del Upano
- 8 - HD2IOA
- 7 - R. Zaracay, Em. Gran Colombia

- 5 - R. Iris
- 3 - R. Quito, R. Pastaza, Esc. Radf. Populares
- 2 - R. Tarqui, Ondas Quevedas, LV del Rio Tarqui Sis. de Em. Atalaya, CRE, Rdf. Paz y Bien, R. Panamerica, R. Bahá'í, R. Popular
- 1 - Ondas Azuayas, R. Federación, R. Casa de la Cultura, Ondas Cañaris, LV de Saquisilí, R. Nac. Espejo, R. Nac. del Ecuador, R. Centinela del Sur, R. Luz y Vida, R. Jesús del Gran Poder, LV de las Carás.

PARAGUAY

- 6 - R. Nacional
- 1 - Em. Paraguayo

PERO

- 6 - R. San Juan de Chota
- 5 - R. Ancash
- 4 - R. Atlántida, R. San Martín, R. Bagua
- 3 - R. Oriente, R. Quillabamba, R. del Pacífico, R. Unión, R. Chota, R. Pucallpa
- 2 - LV de la Selva, R. Chinchaycocha, R. Madre de Dios, R. Tropical, Estación C, R. Tawantinsuyo, R. El Sol de los Andes, R. El Sol
- 1 - R. Nuevo Continente, R. Los Andes, R. Libertad de Trujillo, Ondas del Titicaca, R. América, LV de Cutervo, R. Celendín, R. Gran Pajaten, R. Nuevo Cajamarca, R. Ilucan, R. Acunta, R. San Pedro, R. Moderna, R. Cuzco, R. Bambamarca, R. Huallaga, R. Tacna, R. Chanchamayo, LV de Oxapampa

URUGUAY

- 4 - R. El Espectador
- 1 - R. Monte Carlo

VENEZUELA

- 7 - R. Capital
- 6 - R. Juventud
- 5 - R. Rumbos
- 4 - YVTO
- 3 - R. Barquisimeto, R. Frontera, Ecos del Torbes
- 2 - R. Occidente, R. Táchira
- 1 - R. Nacional, R. Tricolor, LV de Carabobo, R. Turismo, R. Monagas



Computer Corner

Editor: Bill Cole / 107 Charles Street / N. Cape May, NJ 08204

HOBBYSOPE BASICODE

NOS-BASICODE had its origins in the weekly radio program "Hobbyscoop" (pronounced Hobbyscope). This is broadcast by the domestic service known as the Nederlandse Omroep Stichting (NOS) or Dutch Broadcasting Corporation. The program looks at developments in electronics, communications, space research, hi-fi stereo and computers.

Hobbyscope transmitted its first computer program in 1978, at which point many listeners wrote to ask if there was something wrong with their radio receiver. The following year the computer became a regular item when computer data was transmitted each week. At that time (in Europe) four brands of computer were popular: Apple, Exidy Sorcerer, PET/CBM and Tandy TRS-80. Each computer therefore had its own week in the month when machine-readable data could be transmitted specific to that brand. This led to problems from a programming point of view.

Klaas Robers, a well known radio amateur in the Netherlands, came up with an interesting proposal. This involved the creation of a type of "Computer Esperanto" which could be "read" and "written" by various home computers. A group of computing hobbyists was thus formed and the so-called "Basicode" was the result of many months of research. Later, an improved Basicode-2 was developed.

Many microcomputers use an ordinary cassette recorder to store their programs. For this reason some kind of interface is necessary. The interface along with some programming in ROM, convert the computer data into the form of audio tones which can be recorded onto the audio cassette. Upon playback, these tones can be loaded into the computer and translated back into the form usable by the computer. However, nearly all brands of computer use tones of a different pitch and various methods of coding. This means that the transfer of programs from one make of computer to another is usually impossible.

If each brand of computer can be adapted to read and write in a standard form, then the exchange of programs between different brands becomes possible. Basicode is an established standard audiocode which can be used to store and retrieve computer programmes from cassette. Each brand of computer can be "taught" to understand this standard code through the use of a translation program. This allows the sharing of standard programs between computers.

Basicode is available for the following computers: Apple, BBC, Commodore (including PET, C-64 and VIC-20), CP/M, DAI, Exidy Sorcerer, Heath Zenith, OSI Challenger, Phillips P2000, SWTPC-6800, TRS-80 Model I and III.

For more information on the Hobbyscoop Basicode write to:

Hobbyscoop
P.O. Box 1200
1200 BE Hilversum
The Netherlands

Ed.'s Note: Adapted from the Basicode Handbook

'SWL' by Microlog

Ya say ya wanna copy CW but havn't (can't or don't want to) learned code. Ya say ya wanna copy RTTY. Well Bunky, now with a handy dandy little cartridge, you can. I am referring to the 'SWL' by Microlog.

This is a cartridge for the C-64. It contains both the program ROM and the necessary electronics. It plugs into the regular cartridge port. On the back are jacks for speaker/earphone, and hand key. There is also a switch to select narrow or wide band. It comes with a patch cord, demo tape and a rather complicated instruction book.

You should have a very stable and very selective receiver. I tested it on a Panasonic RF-2800 and a DX-160. It worked OK on the RF-2800 but not at all on the DX-160, at least not in the RTTY mode. You can select WPM speeds in both modes, but you have to guess at what it might be, especially in CW. You have to keep changing it until the words make sense, which brings up another problem. Almost all government/military transmissions are encoded so they may never make sense. Best bet is English press transmissions. There is one from a TASS relay in Cuba on 14901 around 1400-1500 GMT.

GOOD POINT - There is a built in on screen clock that you can set.

BAD POINTS - Coplicated manual, ads state that is sent post paid, however, when the brown delivery truck pulled up, the man said, "\$3.90 COD." "HEY MICROLOG!! Postpaid means YOU pay postage, not me!"

The price is \$64.00 (plus \$3.90 COD). The address is Microlog, 18713 Mooney Drive, Gaithersburg, MD 20879.

If anybody has any questions on it I will be happy to answer them. My address is:

Doug McClure
744 Spruce St.
Medina, OH 44256

Bulletin Boards

Several members have asked about the availability of computer bulletin boards catering to the radio hobbyist besides the ANARC system. The following listing is what I have for North America. If anyone has information on other radio specific systems, please drop a line.

ACE BBS

Operated by: Association of Clandestine Enthusiasts

Tel: 1-913-677-1288

300 baud, no parity, 8 bit

Although primarily for pirate enthusiasts, there is plenty of general shortwave information on the system. Run on IBM PC with hard drive.

AMSAT Software Exchange

Operated by: AMSAT

Address: Box 27

Washington, DC 20044

Tel: 1-512-852-8194

300 baud, no parity, 8 bit

This system is designed to provide information on amateur radio satellites.

ANARC BBS

Operated by: ANARC Computer Information Committee

Address: 4347 29th St. S.E.

Rochester, MN 55904-6043

Tel: 1-507-289-7903

300 baud, no parity, 8 bit

Message bases loosely follow the format of FRENCH. Carries Radio Nederland and Radio Canada International monthly bulletins. Weekdays 0500-2300 UTC, Weekends 0500-1400 UTC, usually on more hours per day than scheduled.

ODXA BULLETIN BOARD

Operated by: Ontario DX Association

Address: c/o Steve Webster, 5 Hoshlega Dr.

Scarborough, Ontario M1G 2X4

Canada

Tel: 1-416-598-1934

300 baud, no parity, 8 bit

Run as part of a larger BBS system, this board contains information from the ODXA Newsletter. Online 24 hours per day.

73 MAGAZINE BULLETIN BOARD

Operated by: 73 Magazine

Address: 80 Pine St.

Peterborough, NH 03458

Tel: 1-603-924-9809

1-603-924-9471 (for information ONLY!)

300 baud, no parity, 8 bit

BBS run by the publishers of ham mag. 73. Online 2200-1200 UTC.

UBIX

Operated by: Universal Shortwave Radio Inc.

Address: 1280 Aida Drive

Reynoldsburg, OH 43068

Tel: 1-614-866-4267 (for information ONLY!)

300 baud, no parity, 8 bit

System can be used to order merchandise from Universal as well as exchange shortwave tips. George Wood of RSI is a regular user.

Information can be left for Sweden Calling DXers. Send a SASE for password and information.

1986 WRTH SPECIAL DISCOUNT OFFER Once again the Canadian International DX Club is offering (in Canada only) the 1986 WRTH at a special pre-publication discount price. The 1986 WRTH has a Canadian list of over \$28. Advance orders to CIDX HQ will now be accepted for the books at the following rates: \$24 each, postpaid. OR \$28 each SPECIAL DELIVERY postpaid. This offer valid ONLY for books shipped to a Canadian address. Money orders or cheques payable to CIDX, # 12 1411 Millwoods Road East, Edmonton, Alta. T6L 4T3

THE SHORTWAVE GUIDE

In April of 1985, 500 randomly-selected U.S. subscribers of The Shortwave Guide were sent questionnaires asking about their shortwave broadcast listening habits and preferences. Two hundred and sixty-five readers responded to the survey.

The 1985 Shortwave Guide survey has a number of interesting points. For example, how did the (continuing) poor reception of shortwave stations effect the ratings? With only one exception (Radio Tahiti), only strong, easily heard stations broadcasting in English are in the Top 40. Radio Earth, usually a top contender in such polls, did not show at all as it was temporarily off the air immediately preceding the survey period.

News programs continue to dominate your listening time. Thirty-nine percent of the programs listed could be classified as news or current events programs. Five of the 37 were broadcast by the BBC.

In the top ten, fifty percent of the programs were clearly "DX" or radio hobby programs but out of the 94 shows listed in the Top 40, this occupies only fifteen percent of the total. Compare this to the fourteen percent showing of music programs (three of which are on WRNO Worldwide) and twelve percent showing by mailbag shows and it does not then seem quite as dominant.

These are your choices.

The results were tabulated independently by Voice of America Audience Research Director, Dr. Kim Andrew Elliott.

In this, our first look at the results of this survey, - Dr. Elliott presents the programs you listed as your favorites.

The list below is based on the percentage of respondents who listen to each edition of shortwave broadcast programs (number following program name). For example, 26.6% listen each week to the weekly "Shortwave Listener's Digest" on Radio Canada International while 19.6% listen each day to the daily "World News on the BBC. Programs mentioned by fewer than three respondents are not included.

Based on this information, we have assigned the programs a rank (number preceding program name) based on the above information. In cases where two or more programs have the same percentage, we list them as having "tied" for that particular rank. Among "ties," the arrangement is alphabetical, based on the first letter of the first word in the name of the program.

These are the winners of the 1985 Shortwave Guide Top 40 Programs. We congratulate the following stations for their fine work!

1. Shortwave Listener's Digest 26.6
Radio Canada International
2. Media Network 20.3
Radio Netherlands
3. World News 19.6
BBC
4. World of Radio 11.2
WRNO Worldwide
5. DX Party Line 10.8
HCJB
6. Happy Station 8.9
Radio Netherlands
7. Twenty-Four Hours 8.4
BBC
8. Shortwave Merry-Go-Round 7.8
Swiss Radio International
9. Radio Newsreel 5.5
BBC
10. The World Today 5.2
BBC
11. Letter from America 5.1
BBC
12. Listener's Corner 4.6
Radio Canada International
13. News 3.4
Radio Australia
14. News 3.1
Radio Moscow
15. Shortwave Feedback 2.8
Radio Netherlands
15. Talkback 2.8
Radio Australia
16. Radio World 2.7
Belgian Radio
16. Sunday Morning 2.7
Radio Canada International
16. Waveguide 2.7
BBC
17. Letterbox 2.6
BBC
17. News 2.6
Voice of America
18. Play of the Week 2.5
BBC
19. News 2.4
Radio Canada International
20. Mailbag 2.3
Deutsche Welle
21. As it Happens 2.1
Radio Canada International
21. Germany Today 2.1
Deutsche Welle
22. Great Saturday Grapevine 1.9
Swiss Radio International
22. Newsline 1.9
Radio Netherlands
22. Passport 1.9
HCJB
22. Sports 1.9
Armed Forces Radio and Television
23. Microphone on Europe 1.8
Deutsche Welle
23. Moscow Mailbag 1.8
Radio Moscow
23. Top Twenty 1.8
BBC
23. World at Six 1.8
Radio Canada International
23. Worldwide Shortwave Spectrum 1.8
Voice of America
24. From Our Own Correspondent 1.7
BBC
24. Sweden Calling DXers 1.7
Radio Sweden International
25. Calling All Listeners 1.6
Kol Israel
25. Network News 1.6
Armed Forces Radio and Television
25. News About Britain 1.6
BBC
26. Rock Music 1.6
WRNO Worldwide
27. Caribbean Nite Call 1.5
Trans World Radio, Bonaire
27. Jazz :30 1.5
WRNO Worldwide
27. John Peel 1.5
BBC
27. News 1.5
Radio Netherlands
27. News 1.5
Radio RSA
27. Newsdesk 1.5
BBC
27. Postbox 700 1.5
Radio Austria International
27. RCI Journal 1.5
Radio Canada International
28. News 1.4
Kol Israel
28. News 1.4
Radio France International
28. Short Story 1.4
BBC
29. DX Program 1.3
Spanish Foreign Radio
29. Saturday Special 1.3
BBC
30. Australian Insight 1.2
Radio Australia
30. Brain of Britain 1.2
BBC

- | | |
|--|--|
| 30. DX Corner 1.2
Radio RSA | 33. Meridian 0.9
BBC |
| 30. Four Corners 1.2
Radio Australia | 33. Monitor 0.9
BBC |
| 31. Canada a la Carte 1.1
Radio Canada International | 33. Spanish by Radio 0.9
Spanish Foreign Radio |
| 31. DX Corner 1.1
Kol Israel | 34. Australia Tonight 0.8
Radio Australia |
| 31. DX Program 1.1
Radio Moscow | 34. Listener's Letterbox 0.8
Radio Beijing |
| 31. Financial News 1.1
BBC | 34. Musical Mailbag 0.8
HCJB |
| 31. Music 1.1
Voice of Greece | 34. News 0.8
Deutsche Welle |
| 31. News 1.1
Radio Austria International | 34. Panorama 0.8
Spanish Foreign Radio |
| 31. Talk to America 1.1
Voice of America | 35. P.O. Box 4644 O.V.
Radio RSA |
| 32. Anything Goes 1.0
BBC | 36. News 0.6
Voice of Nicaragua |
| 32. Commentary 1.0
Radio Moscow | 37. Paris Calling Africa 0.6
Radio France International |
| 32. Report from Austria 1.0
Radio Austria International | 37. Radio Bridge 0.6
Radio Moscow |
| 33. British Press Review 0.9
BBC | 37. Worldwide Dedication Show 0.6
WRNO Worldwide |
| 33. Concert Hall 0.9
BBC | 38. Music 0.5
Radio Nacional do Brazil |
| 33. Dateline 0.9
Swiss Radio International | 38. Music 0.5
Radio Tahiti |
| 33. Helsinki Calling 0.9
Radio Finland | 38. Music 0.5
Radio Havana Cuba |
| 33. Jolly Good Show 0.9
BBC | 39. Northern Report 0.4
Radio Finland |
| 33. Let's Learn Chinese 0.9
Voice of Free China | 40. Australian News 0.3
Radio Australia |
| | 40. Music in the Night 0.3
HCJB |

NO COLLECT CALLS ON THESE ADS, PLEASE.

FOR SALE: Radio West modified Kenwood R-1000 in excellent condition. Has 4 kHz ceramic, 2.9 kHz and 1.9 kHz Collins mechanical filters, slow/medium/fast AGC, DC jack installed, owner's manual. Price \$450.00. Victor Barz, Room 3208 Cross-Baits II, Ann Arbor, MI 48109. Call (313) 763-2848 between 1200-1400 and 0300-0500 UTC.

FOR SALE: Popular Communications, issues September, '82 to December, '85. Radio Database International (International Edition). WRTH's '79, '80 (2), and '81. SWL's Manual of Non-Broadcast stations. Confidential Frequency List, 5th edition. SPEEDX August, '83 to September, '85 and RBI issues from #63 to #103 (a few missing). All offers to Steven R. Lare, 824 West 25th Street, Holland MI 49423.

FIR SALE: Sony ICF2001, \$100.00; ICF6700W, \$180.00. Prices include shipping. Customized Beam Headings (from/to) and Distances (MI/KM) to over 355 WRTH transmitter sites. Useful in picking alternate transmissions and selecting listening times based on distances. ITU Country Codes included. Send your location or coordinates, \$6.00. Gilfer's Confidential Frequency List (5th edition) and Guide to RTTY Frequencies (2nd edition), \$6.00 each. FRENEX complete '84, \$5.00. Cashiers check or money order, please. Al Drehmann, Route 2, Box 3B, Tryon, NC 28782. Phone (704) 894-3398.

THE CALCULATING SWL -- IIII

IN TCSWL--II we found out how to calculate the necessary inductance required to effect an electrical lengthening of a short dipole antenna. One problem remains, however, and that is the determination of the physical size of the coil and the number of turns of the windings. So, permit me to introduce you to the following equation:

$$1) \quad N = [L(3.75a + 9.5b)/.225a^2]^{\frac{1}{2}}$$

where:

N = the number of turns comprising the coil

a = the diameter of the coil, in inches

b = the length of the coil, in inches

L = the given inductance, in micro-Henries

This is simply a re-working of an equation which is usually given in the following form:

$$2) \quad L = .225a^2N^2/(3.75a + 9.5b)$$

Further developments are as follows:

$$3) \quad a = [3.75L + (14.0625L^2 + 8.55LbN^2)^{\frac{1}{2}}]/.45N^2$$

$$4) \quad b = a(.225aN^2 - 3.75L)/9.5L$$

I have given all of the possible forms of the basic equation in order to facilitate the process of finding the most convenient coil configuration possible. Start with equation (1) and if this yields an inconveniently large number of turns for the coil, you can proceed to equations (3) and (4) in order to vary the diameter or the length of the coil, while increasing or decreasing the number of turns as needed.

One final observation: by adding inductance to an antenna to make up for missing length the bandwidth for which the loaded antenna is resonant is reduced. An antenna tuner would seem to be called for in order to handle this problem.

Returning to our original problem in TCSWL--II:

$$L = 50$$

$$a = 2$$

$$b = 4$$

$$N = 50.277 \text{ (call it 50) turns of wire distributed along } 4".$$



Listeners Notebook

GLENN HAUSER, Box 490756, Ft Lauderdale FL 33349

PROPER CREDIT Other publications and broadcasters may use material from LN, provided due credit be rendered to the original reporter and the NASWA Listeners Notebook. This courtesy does not extend to closed organizations which do not allow reciprocal access to their publication. BBC Monitoring Service items (designated WBI for World Broadcasting Information) are copyright and may not be reproduced without BBCMS permission. The most important items have been broadcast immediately on WORLD OF RADIO or SWL DIGEST, not otherwise mentioned herein. All contributions to LN are gratefully received, but your editor cannot promise a personal reply because of severe time constraints. Material for LN should be marked as such each time (not just on the envelope), as input for other gh outlets also comes to Box 490756. Reports to gh should not be cut into little strips. It also helps if you use one side of paper only, and do not mix LN items with other correspondence. All times, dates and days are day/month GMT = UTC, u.o.s. Please do not ask me for advice on receivers or other equipment. Thanks (gh)

ALASKA KNLS, Anchor Point, 7355, hrd 1730-2030* in EG; good sig 15/11 (Ernie Behr, Kenora Ont)

ALBANIA R Tirana on new 6080, from 2130 PO, 2200 GM, 2230 PO 23/11 (Ernie Behr, Kenora Ont) I assume you mean PL rather than PT (gh)

ANGOLA A Voz da Verdade, UNITA front, in PT via R Nacional, 4949 22/11 2015, P-F ('PEM', Play-DX, Italy) No, couldn't be via R Nac (Monferini 23/12)

Regarding the R Unita logging of mine, Dec LN-17, per ID I am certain, but in retrospect it sure didn't sound like a 'clanny'--that is, it was too polish-ed and professional a format; however, on the other hand, it's not at all uncommon for Voz de Verdade to sound very professional and smooth with 'pops', etc. I did on the day I heard, actually think, at first, that it was the wandering R Nacional, Luanda, which I had just recently heard once on 4950 over Voz de Verdade, but the ID convinced me otherwise, but I am left wondering, for if R Unita is indeed a less than professional sounding 'wheezer' clandestine, then I'm left with questions as to what I heard; should have saved the tape! (& I haven't noted it since). But per my log-book notes for 18/10, I have noted that it was a very good Afro opening, and thus the P-F signal strength favors it had been a lesser-power Angola source. Has anybody else logged this station such that observations can be compared. Just in tracing back see Valko has a R Unita logging in Oct LR-B that is compatible with mine, but this still leaves questions, but not regards Luanda (Maxfield Greenwood, Sedgwick ME)

ER do Huambo on 5062, // 5043.7, at 0430 w/speech by PT man with crowd in background. Check at 0510 found two fqs not in // (Jeff Stover, Lock Haven PA)
R Nacional de Angola, G on 4760 11/12 0250, ID at 0300 (Christos Rigas, IL)

ANTIGUA DW, new 9640 for EG to Au, ex-9650 but poor choice since co-channel R Australia Indo svc also on at 0930; I informed DW prior to D85 about this; poor 5/11 (Don Rhodes, Victoria, ADXN)

AUSTRALIA A new ABC radio svc to cover remote parts of the Northern Territory undergoes trial this weekend [23-24/11]. Xmters for new svc'll operate in the HF band and'll be installed alongside the ABC's existing MW xmters at Katherine, Alice Springs and Tennant Creek. DOC spokesman said many such areas have had no relay svc or poor reception from RA ext1 svc (RA 0430 23/11 via WBI 5/12)

R Australia EG fqs: 0000 17795 15395 15320 15240 15160. 0100 17750 17715 15395 15240 15180. 0200 17795 add. 0300 15320 add. 0400 17795 17715 15320 15240 15160 11910. 0500 add 17750. 0600 drop 17795, add 15320. 0700 17750 17715 15395 15160 11910 9655. 0730 drop 15160, add 11720. 0800 add 9580 & 6060. 0900 15405 11800 11720 9655 9580 6060. 0930 drop 11720, add 7215. 1000 15405 9770 9580 7215 6060. 1100 11800 9770 9580 7215 6080 6060 5995. 1200 add 7265 7205. 1300 9580 7215 7205 6080 6060 6035 5995. 1400 add 11800. 1430 drop 11800. 1900 9580 7215 7205 6080 6060 6035. 2000 9620 9580 7215 7205 6035. 2030 drop 7215. 2100 15395 15240 15160 9620 9580. 2130 drop 9620 9580. 2200 17795 15395 15320 15240 15160. 2230 same (WBI 5/12) They go on to list non-EG xmsns under heading "R Australia Overseas Svc" as if the English pgms were not also for overseas! (gh)

B A N G L A D E S H R Bangl on 9640, from *1513 IS, weak & QRM 24/11; what lang? (Ernie Behr, Ont) EG mx at 0000 & 0130 on 4875; this may be unintentional drifting xmtr, so look for stn any fq between 4870 and 4900 (Victor Goonetilleke, Sri Lanka, Dec ADXN)

B E L G I U M BRT EG sked effective 1/1 to 1/3: Af 19-1920 Sun & 22-2255 daily on 9905. Eu 19-1955 M-Sat, 19-1920 Sun, 22-2255 daily on 5905 1512. NAM 08-0855 M-F & 0910-0930 Sat 9880. 13-1355 M-Sat 15590. 0030-0125 daily 5910. SAm 0030-0125 daily 9925. FE 08-0855 M-F & 0910-0930 Sat 9880 15515; 13-1355 M-Sat 15515. (BRT)

B E R L I N Hmm? Am I hearing RIAS-Berlin on 6005? It's extremely irregular making me wonder. Hrd at G levels 28/11 & 9/12 but zilch otherwise. In from 0700 to beyond 0900. Talk format w/mx breaks in GM; IS at 0730 & 0830 and a RIAS ID. IS is new to me, jazzy sound like theme from Miami Vice of all things. Can a European reader help on this? (Maxfield Greenwood, Sedgwick ME)

B O L I V I A CP 59, R Cobiya, Cobiya, 4854, 1 kW: Friendly long verie letter rx from Sr Lino Mishuchi von Acken, owner of R Frontera in Cobiya, in reply to a f/up report for R Cobiya reception on 6/6/73. V/S on reading my report was able to assure me sigs I rxd were correct. Lino said R Cobiya had been defunct 4 yrs as it had been run by irresponsible people who allowed it to go bankrupt. Rxd by air in 337 days since f/up for a SP f/up report, postcard and used NZ stamps. V/S is also a ham as is his wife and he sent both their ham cards, a R Frontera calendar, and a small badge of the R Club Boliviano. Inflation sure is high in Bolivia--face value of postage stamps on airmail reply envelope was \$B250,000 (Dene Lynneberg, Nov NZ DX Times)

B O T S W A N A RB on 4820 // 3356 w/distorted audio at 0348 and barnyard IS; check back at 0410 found W in EG w/comtry (Jeff Stover, Lock Haven PA, 11/12)

B R A Z I L Logged following ZYs on 49m, all from 2230 or 2300, between 5/11 & 11/11, all but 5970 w/clear IDs: 5970, maybe R Itatiaia, often G to 0200*v, but no ID. 5980 R Guarujá, Florianópolis. 6000 R Guaíba, Pto Alegre; 6010 R Inconfidência, Belo Horiz. 6020 R Gaúcha, Pto Alegre. 6040 R C1 Paranaense, Curitiba. 6135 R Aparecida, // 9635 11856. 6150 R Record, São Paulo. 6170 R Cultura, São Paulo. Strongest are 6000 6010 6020 6135. R MEC, 9770 from 2300 jazz & Braz mx to 2411*, F 6/12 (Ernie Behr, Kenora Ont)

Following stns hrd complying w/new Braz 49mb plan: 6000 R Guaíba, Pto Alegre 16/11 0847, ex-5965. 6030 R Globo, Rio 16/11 0838, ex-6035, strongest Braz on band at this time except R Nac blasting in on 6180. 6040 R C1 Paranaense, Curitiba, 16/11 0829 ex-6045. 6120 R Globo, São Paulo 16/11 0819 ex-6125. 6170 R Cultura, São Paulo, 16/11 0835, ex-6165 (Christos Rigas, Chicago IL)

Pres José Sarney 6/12 signed decree cancelling licence granted to [now defunct] R Tupi for SWEC in Rio (WBI 12/12) Monitoring research in Dec: Radiobras stn R Nacional de Amazonia, in PT obs: 15200 18-2030, 11780 09-0230, 6180 07-1330. Pgms incl Jornal Nacional 02-0230 & 09-10, O Repórter Nacional 14-1430 & 20-2030, A Voz do Brasil 21-22 (WBI 12/12)

B U R K I N A F A S O 4815 at 2323-2403* 3/12, EG vocals "We are the World" then two M conversing, then FR vocals 2342, 0000 Ici Ouagadougou ID & S/off anmts, 0001 anthem; SIO 252 (Richard A D'Angelo, Wyo, missing PA)

BURMA Things have finally opened up for FE Asia on 60m, with the Burmese nationalities pgm in at G level w/W in 'exotic' unk lang at 1200+ 15/12 on 4725 (Maxfield Greenwood, Sedgwick ME)

CAMEROON Noted Douala back on 4795 24/11 (Maxfield Greenwood, Sedgwick ME) R Douala on 4795 w/IDs and cowbell IS repetitively at 0448-0450, "This is Douala". F-G sig (Jeff Stover, Lock Haven PA, 11/12)

Yaoundé on 4850 at 2106-2117 w/EG mx 8/12, SIO 353, // 4795, SIO 242, and 5010, SIO 252. No 3lmb fq detected (Richard A D'Angelo, Wyomissing PA, 8/12)

CENTRAL AFRICAN REPUBLIC Bangui on 5035 at 0540 w/FR talk by W, then pgm closed w/theme mx same as ESPN's "Sports Center". Weak but readable (Jeff Stover, Lock Haven PA, 11/12)

CHINA CPBS on 4905 at 2225-2258 f/out on 2/12 w/CH talk by M, instl mx at 2228-2230, then march mx w/M talkover. Followed by long talks by M & W. TBS says 2230*. //5860 hrd briefly; SIO 353 to 141 at f/out (Richard A D'Angelo)

R Beijing in EG: 0000 Am 11970 11685 11660 9820. 0300 Am 11980 11860 9640 8425. 0400 Am 11980 9640 8425. 0830 Au 15440 11755 11455 9700 6950. 0930 Au same. 1100 Am 9820. 1200 Am 9820 9640 4200 1296. 1200 As 11755 11600 9535 6935 1341 [info direct from RB says 9535 is test to NAM -gh]. 1300 As 11755 11600 9550 6535 1341 [ditto 9550]. 1400 As 15165 11600 9550 6935 4200 [ditto 9550, also 9730 at 13 & 14]. 1500 As 15165 11600 4200. 1600 Af 11600 9570 82-60 4130. 1700 same. 1900 Eu 8260 7590 6860 4130. 1930 ME/Af 9440 7480 6955. 2030 ME/Af same. 2100 Eu 8260 7590 6860 4130. (WBI 28/11)

R Beijing in Esperanto: 1100-1130 As 9480 6955. 1300-1330 As 15385 11650 4200. 2000-2030 Eu 9965 9365 7470 6490. 2230-2300 Am 11515 9860 (WBI 28/11)

R Beijing in Tagalog: 1130-12 15135 11765 11445 1341. 1200-1230 15135 117-65 11445. 1430-1500 15135 11765 11445 6590 1341 (WBI 28/11)

COLOMBIA R Bucaramanga, 4845, 0300-0312 w/time pips, ID, fq, another ID & into lively Latin vocals, adstring 0308 3/12, SIO 353 (Richard A D'Angelo PA)

CUBA Excerpt from iv w/Comms Minister Pedro Guelmes González on the damage caused by hurricane Kate: Microwave linx disrupted by strong winds putting dishes out of alignment. TV sig xmsn interrupted several times. At the moment our comrades the aerial riggers, engineers and technicians are working to restore the nets, we believe by early this aftn [21/11]. As for radio, 20 xmtrs are not working mainly because of lack of power, tho some cables got wet and others are damaged. Some masts were knocked down by violent hurricane forces. All comrades from diff depts working w/our trade union to solve these problems ASAP (Tele-Rebelde net, Havana in SP 1200 21/11 via WBI 28/11)

Monitored sked for RHC the week ending 20/11: EG 00-06 Ams 9740 6100. 01-0450 Ams 6140. 0330-06 Ams 6090. 06-08 Ams 9525. 17-18 Eu/Af via USSR not hrd. 2010-2140 Eu/Af 11795. 2050-2140 Ams 15300 11725. 22-23 Eu/Af via USSR not hrd. Also anced as being on 6190 01-05+ but nothing hrd there [except VOA?]. One day also hrd w/EG on 5980 at 0300 but not since. SP: 00-0245 Ams 11725. 01-03 Ams 6090. 03-06 Ams 6060 5970. 0630-0730 Eu 9730. 09-11 new bc unk taget on 6090. 0930-1045 Eu 9730. 11-16 Ams 15230 11950. 11-1645 9550. 11-18 11760. 11-2050 15300 11725 Ams. 18-20 Eu 15230 11950 & anced but not hrd via USSR on 9720 9695. 22-0040 Ams 11760 11715 9550. 22-02 Ams 6060. 22-06 Ams 11815 9730. 23-06 Ams 11970. AR: 15-16 ME via USSR not hrd, 1630-1730 15230 11950. Creole: 02-03 Carib 6060. 11-12 Carib not hrd. FR: 03-0330 Ams on 6090. 0830-0930 Af 9730. 16-17 Af via USSR not hrd. 1830-2010 Af 11795. 20-2140 15230 11950.Af. 21-22 Eu via USSR not hrd. Guaraní 22-23 SAm 11725. PT: 0730-0830 Af 9730. 09-10 SAm not hrd. 20-21 Af via USSR not hrd. 23-24 SAm on 11725. Also: RMWS via Cuba 04-05 6000, 11-1330 6000. R Moscow NAm svc 00-04 on 6000. RMWS 1330-2200 11840. R Rebelde 24h on 5025; USSR DS 24h on 4765.

Between 0000 & 0100 Cuba uses 13 diff xmtrs at same time, incl two 60mb outlets and the RM relay (Christos Rigas, Chicago IL)

CZECHOSLOVAKIA R Prague's bcs in Czech & Slovak: 0030-0057 N&SAm 11990 9740 7345 5930. 08-0830 SEAs/Oc 21705 17840 11855. 15-1530 Af/SEAs/Eu 21505 17705 15110 13715 11990 9605 7345 6055 5930. 22-2227 N&SAm/Eu/Af 11990 9740 9630 7345 5930. 2230-2300 Eu 6055 1287. Sked good until 5/5/86 (Rigas IL)

R Prague in EG: 01-02 As/Am 11990 9740 9630 7345 5930. 03-04 Am 11990 9740 9630 7345 5930. 0530-0545 Eu 11990 9505 6055 1287. 0730-08 As/Au 21705 17840 11855. 0830-09 As/Au same. Sat/Sun 09-0930 same. 1430-1500 Af/As/Au 21505 17705 15110 13715 11990 9605 7345 5930. 1530-1625 Af/As/Eu 21505 17705 15110 13715 11990 9605 7345 6055 5930. 1630-1700 EG Eu 7345 5930. 1730-1825 Af 17705 15110 13605 11990 9605 7345 5930. 19-1930 Eu 7345 5930. 20-2030 Eu 7345 5930. 2130-22 Eu 6055 1287. (WBI 28/11)

R Prague full usage of 13 MHz band: 1430-1500 EG 13715. 15-1530 CZ/SV 137-15. 1530-1625 EG 13715. 1630-1730 AR 13605. 1730-1825 EG 13605. 1830-1930 FR 13605. 1930-2030 AR 13605. 2030-2125 FR 13605 (WBI 28/11)

E C U A D O R LV del Upano hrd nightly on 5040, coming on arnd 0000 and still going after 02. Mix of Lam & Indian mx; G sigs (Charles Weiss, S Euclid OH, 5/12) R Pastaza, 3316.2, F 9/12 2315-2339 M in SP, mx, ads, many ments of Perú, mx, 2330 ads again (Chuck Bolland, Lake Worth FL)

E Q U A T O R I A L G U I N E A R Nacional, Bata, hrd late eves till 2203* on alt fqs either 4926 or 5004. QSL by Mr Juan y José says they have DX pgm on Suns 1015-2055 [sic, guess 2015-2055?] titled "Nuestros Oyentes Escriben". I guess it is a mbg pgm, never hrd so far (Salvatore Placanica, Italy, Aug-Oct UADX) Hrd on 5003.8 at 1945 14/10, weak in local lang not SP (Goonetilleke ")

E T H I O P I A VORE on 9560, from 1400 AR pgm, 1500 EG, faded by 1515 3/12 (Ernie Behr, Kenora Ont)

F A L K L A N D I S L A N D S now obs DST til 19/4 (Arthur Cushen, NZDXT)

F R A N C E Monitoring research 4-8/12: In Paris a stn on 96.6 MHz bcs daily 06-09 Paris time in EG, called on weekdays "Good Morning Paris," incl relays of 24h VOA-Europe svc. Weekdays it is on at 0600-0710, 0730-0840, and 0800-0830 Paris time. Rest of 3-h xmsn consists of FR mx, 1cl anmts, ivs, ads; Sats, VOA-Eu only relayed at 06-0630, 07-0710, 08-0810 Paris time while Suns whole 3h xmsn is VOA-Eu relay. Remainder of bc day on 96.6 is in hands of Radio Ici et Maintenant (Radio Here & Now) which is described in a local guidebook as an experimental, artistic and interactive stn. Relays of VOA-Eu svc by stn in Paris amount to just 13h a week out of the 168h of bc by VOA-Eu (WBI 12/12) The VOA-Eu svc, fed by satellite to cable systems and any FM stns that'll take it, has received a lot of publicity lately, but since SW is not involved, I don't expect to cover it to any great extent (gh)

G H A N A GBC on 3366 & 4915 running EG mx // til 2255 when 3366 went to brief mx in EG inspirational talk, and 4915 into Afro vocals. SIO 242 & 343 resp on 8/12 (Richard A D'Angelo, Wyomissing PA)

G R E E C E Bulgaria is jamming the BG lang segments on V of Greece, at 1630 on 9420 7430 7095, and 2025 on 9420 7430 7095 (Christos Rigas, Chicago IL 20/11)

G R E E N L A N D Hopefully this long info will give some guy far off listening to a weak signal enuff 'meat' to ID. Seeing from my window the very first glow of dawn, thought if Greenland is broadcasting on 3999, this is perfect. And there it was, 10 db over S9 (Have hrd rumors of there being someday a 5 kW there - has it happened?). This being 24/11, a Sunday, and with a 1115 t-in, pgm of a live (it seems so - parishoners' coughs et al.) hymn singing and recitations by minister in Eskimo-like lang so I presume it is Greenlandic. Sig strength indicats VG grey-lining potential. Don't have my SR/SS chart; need a new one! but depending on the Nuuk grey (I do think they do have light-period, no?) this should have good WNA potential on the grey and possibly dark path to Australia. At 1127 church svc cut short so probably a recorded pgm. And commenced a prolonged simple and repetitive melody on what sounded like a xylophone (is a celeste not a xylophone, or vice versa?) IS proceeds for minimum of 3-4 mins, then M gives ID, and in GL gives several mins of I presume mx. At about 1140, goes into continuous EZL mx, to which I am listening right now; brief interruptions by M DJ. Comments: xmtd audio quality is first-rate--a quality product. Sig strength: have been listening now for 35 mins and sig has maintained a steady 10 to nearly 20 dB over S9, but with sunrise QRN is rising quit

a bit now at 1145. From 1115 to 1145 I'd give a SINPO of 44353+, using USB to avoid 3999 ham net. By 1200, 44253; by 1215 33232. At 1200 only brief ID by M in GL, then continued EZL mx. [Some days later:] Further check suggests strength of my reception to be strictly a result of a very fine-opening. [Later again:] In again w/big sig at 1115 t/in and again it is a Sun, 15/12. Raises questions about the Sun xmsn, but haven't monitored enough to resolve whether it's simply coincidentally fine propagation condx or something to do with their power or xmsn times (Maxfield Greenwood, Sedgwick ME)

G U A T E M A L A R Mam noted 2345-2400* on 4825 7/12, easy SP vocals, Radio Mam IDs; fq anmt at closing, no anthem; SIO 353 (Richard A D'Angelo, PA)

I N D O N E S I A YB4FNN, Abet Shuaian, a ham I contacted, sends info about stns on Banka Island: RRI Pangkalpinang, 3040, 23-0130, 04-0630, 09-15. RRI Pakenbaru on 5894 now hrd in Colombø w/out any difficulty to 1559v*; RRI Yogyakarta doesn't s/off at 1700 but goes well past 1900. Some reports say all night but frankly I've not kept up all night! Sibolga also going past 1800; Ideal chance for Euros to log them (Victor Goonetilleke, Sri Lanka, Aug-Oct UADX)

RRI Natl pgm, Jakarta: 2158-0100 11865 11770 9680 7270 6045 4774 3277 2332 999. 0100-0458 Sun 11865 9680 7270 6045 2332 999. Daily 0458-0958 11865 11770 9680 7270 2332 999. 0958-1500 11865 9680 7270 6045 2332 999. 1500-1710 11865 9680 7270 6045 4774 3277 999 (WBI 21/11) RRI Local Pgm, (Khusus), Jakarta, 01-02 Sun, 08-15 daily on 4774 3277, fqs also being natl pgm at certain times (WBI 21/11)

RRI Jakarta on 11865, strong // 11770, fair w/IS and Indo nx 0600. Jayapura 9611 // . RRI Ujung Pandang 9510 w/5min IS 08-0805, local ID 0805 "Inilah RRI Ujung Pandang" and into Indo nx; quite G thru BBC Antigua. What does "[plain uos]" in Dec IN-31 mean? (Richard E Wood, Hilo HI, 10/12) Plain news, as opposed to -reel, dictation speed, reportage, w/commentary (gh)

I R A N VoIRI on 9685 in AR 1500-1800 f/out; on 9770 in RS 1515-1614*, incl Islamic relig pgm in RS, 28/11; on 9720 in FS from 0030 6/12 (Ernie Behr, Ont)

Monitoring research 4-9/12: VOIRI recently registered these xmsns from a 500 kW sender at Kamalabad w/IFRB for D85: 9770 10-15, 9685 15-1730, 7110 0330-07, 6080 1730-2030. DS in Persian hrd on 9700 1000-1515 & 1615-1715, ES in RS 1515-1615. ES in GM 1730-18, FR 18-1830, TK 1830-1930, EG 1930-2030 now hrd on 9770 9022 6080. AR hrd on 7110 from 0330 (WBI 12/12)

I R A Q Saut ul-Jamahir on 7120 7130 9630, 9745 to Eu *1600-2128*v; diff SuJ pgm on 6195 19-2330; on 7295 from 1400 20/11 (Ernie Behr, Kenora Ont) R Baghdad hrd on new 6185 from 1500 w/SuJ; strong 14/12, // 7295 in QRM (ibid.)

I R E L A N D Breffny Community Radio, 2340, 30/11 2300-0140, IDs, pop mx, F-VG (S Sterza & R Pavanello, Italy, Play-DX) 2nd harmonic

I T A L Y AWR Forlì, 6205, from 2000 EG & mx, 2101 GM to 2202*v, G 20/11 (Ernie Behr, Kenora Ont)

R Calabria International, new sked from Dec: 09-1030 13760, 13-14 on 13630, 21-22 on 13760; pgms in IT & SP, w/anmts in IT, SP, GM, EG. (A Napolitano via R Naymo, Dir., RCI, via Play-DX 1/12)

J I B U T I On 4780+ w/surprisingly G sig, M talking forcefully in lang, Somali or Afar? at t/in 0318 11/12. 0334 mx into Af mx, AR sound to it, not able to identify type. Nonstop mx to 0350 & apparent ID (Jeff Stover, Lock Haven PA)

K A S H M I R A Z A D Azad Kashmir R, 4790, pgm ended at 1400, but started again with native mx at 1405, which was often interrupted (Keiichi Kondo, Asahikawa city, Hokkaido, Japan, early Dec) Welcome! (gh)

K E N Y A VOK, 9725, from 1900 EG nx & pop songs, 2000 nx & talk to 2007*v; E sig 2/12; on 11740 from 1900 SH pgm & hilife mx, nx to 2007*v, also strong 2/12 but u/RN from 1925 (Ernie Behr, Kenora Ont)

VOK on 9725 1900-1932 2/12, timepips, ID, "Voice of Kenya, from Nairobi; time now is 10 o'clock". Into nx. EG vocals from 1902 til tune out. SIO 2+42+ (Richard A D'Angelo, Wyomissing PA)

Permanent Secy in MInfoBc Mr D R Rachuonyo, yesterday reaffirmed govt's commitment to develop a net of regional & sub-regional stns capable of xmtg their own productions. Said if done, bcs'll reach every corner of country enabling more Kenyans to listen to VOK late aftn & early eve bcs (KNA nx agcy, Nairobi, in EG 1210 6/12 via WBI 12/12)

K O R E A N O R T H R Pyongyang on 11735 in EG 2300-2348*v, vy strong 8/12, w/weaker spurs on 11727.5 and 11742.5 (Ernie Behr, Kenora Ont)

R Pyongyang in EG on 9/12 2300-2450 on 13650; same time SP on 13700 (Christos Rigas, Chicago IL)

Two xmters obs from last Aug on 3528 & 3225 w/DS pgm, not obs on 3030 in Wo'n-san local stn (Nagoya DXers Circle, via Oct IDXCI ADXR)

L E B A N O N Monitoring research 14/11: R Free Lebanon resumed bc on 1476 kHz albeit on reduced sked. At end of 0545 nx 14/11, and it'd stop bcng for a few hours, to return later in day; "This is R Free Lebanon, the radio of the Lebanese resistance". The slogan remains same, the customary recorded excerpts from the late Bashir al-Jumayyil's speeches were not carried prior to the nx. It was reported earlier that Phalangist media were taken over by Lebanese Forces (WBI 21/11)

L I B E R I A Monitoring research 12-13/11: At 0656 12/11, R ELWA interrupted its reg^ly sked pgming on 4760 and abruptly began to play martial mx. Stn normally carries 5-min nx weekdays 0655. Ancr simply gave time checks mixed w/ martial mx and said more info'd follow. 0736, statement by General Quiwonkpa that 'the patriotic forces as of now have seized power', 'our forces have completely surrounded the city' and 'Samuel Doe is in hiding', this repeated at about 0810. ELWA made regular fq change to 6070 at 0830; 0856, report on morn events, then switch to relay BBCWS nx, then martial mx alternating w/relig mx and repeats of previous statements. 1423, ELWA bc statement by Col Moses Wright that First Battalion had now seized R ELWA. Called for joint efforts 'to combat Gen Quiwonkpa and his group'. This statement repeated several times rest of aftn betw martial mx. Regular fq change back to 4760 at 1755. Statement by Samuel Doe at 1900 & 2000, by which time R ELWA'd started carrying tradl Libn mx rather than martial. Relig pgms such as Back to the Bible, 2030+ w/repeat of Doe's statement at 2115; closed down 12/11 2230. Next day, 0530 resumed & appeared normal. On 12/11 & 13/11, the ELWA ES of relig bcs for W/C/NAf appeared in the main to be unaffected by the coup attempt (WBI 21/11)

M A D A G A S C A R R Mad noted on 3287.6 at 0254 2/12 w/vern M talk; very bad ute QRM made it virtually unusable. Apparent ID 0300 by M, brief Af mx (intro?) then M talking (Jeff Stover, Lock Haven PA)

M A L A W I [Cf Dec LN-24] Re Greenwood's question about 3380, hrd a report several months ago, on SWLD I think, that MBC has moved to 5995, no longer using 3380 from 0300 (Ernie Behr, Kenora Ont) To M Greenwood's request, R Malawi continues hrd on 3380 arnd 1600 in Chichewa & EG (Richard E Wood, Hilo HI 10/12)

M A L I S/on simultaneously on 4783 & 4835 w/ID at *0545, identical S-meter readings of S9, identical twins, hi, 9/12 (Maxfield Greenwood, Sedgwick ME)

R D National hrd on 4835 in vern on 29/11 at 2223 // 4783 (C Rigas, Chicago)

M A L T A IBRA R.NAm on 6110 now has EG *2015-2045, then GM til 2115*, strong 20/11 (Ernie Behr, Kenora Ont)

M E X I C O R Huayacocotla hrd w/best sig ever on 29/11 between 0025 & 0108* giving ID as "R Huayacocotla, la voz de los campesinos" (Christos Rigas, Chicago IL) 2390 kHz, no doubt

M O R O C C O Stn at first unID on 9865, in AR 1900-2300 f/out, strong since 27/11. Later IDed as RTVM Tanger, in AR from 1800 (Ernie Behr, Ont, 14/12)

M O Z A M B I Q U E Re "Rovuma to Maputo" in LN Dec-24, Rovuma is the most northerly town of any size in Moz, while Maputo is the most southerly (also capital). Ref is therefore analogous to the British "from Land's End to John o' Groats" (or more accurately in reverse order), the Biblical Hebrew "From Dan to Beersheeba" or Modern Israeli Hebrew "From Dan to Eilat." (Richard E Wood, HI)

Monitoring research 7-8/12: R Maputo, ES of R Moz, hrd w/daily EG pgm to SAF 1800-1900 on 9618; also ancd 11820 4855 3265 1079 and 98.01 FM at this time and a bc from 1200 next day on 11835 11820 9525 1079 98.01 (WBI 12/12)

On 3210 at 0323 w/pop-type Af mx & M ancr in PT. ID 0330 and apparent anthem. Into possible mx by W; ments of Maputo and SAF. P-F, almost covered by ute on low side 2/12 (Jeff Stover, Lock Haven PA)

N I C A R A G U A From a commentary by Onofre Guevara entitled Analysis of Misinformation, on R Sandino, in SP 1200 13/11: Our country is suffering from a radio siege that experts in radio information - in this case misinformation - believe has as malicious an intent against our revolution's image as imperialism's armed mercenary aggression. One of those experts, Howard Frederick, has published a study on this topic which was summarised in the 11/11 issue of 'Barricada'. From it we can obtain some data about misinfo bombardment that hits our country daily. He points out that in addn to LV de Nic and R Sandino, Nic has only 15 radio stns forming part of Coradep (People's R BCing Corp), compared to the 76 radio stns that come from abroad, most of which bc a counter-revly and anti-Nic msg. 18 stns penetrate from Honduras and 26 from CR, the main bases of the counter-revolution. If to these we add four from El Salv, five from Guat and the repeater of the so-called Voice of America, we can just imagine the dimensions of the radio war against Nic. Frederick pinpoints three main ideas used by forn radio stns in their war against Nic: 1) penetration of values alien to Nic revly society; 2) economic msgs that clash w/principles upheld by Sandinist peoples' rev; 3) general anti-Sand and pro-contra ideological line. For example, R Valle enters Nic airwaves from Choluteca, Honduras w/ ads aimed at showing that life can be better abroad. Aftn mx of R Columbia, CR includes reports on forn capital stock market, bank ads offering loans, trips to Miami and other elements ruled by market forces. Fred believes clearest ex-ample of obvious disinfo was on HRN 4/7/85 about Nic bombing of the town of Alauca in progress; obviously prefab incident because forn correspondents were already in field interviewing witnesses at time when alleged attack took place. Everything is well coordinated, massive, strident and calculated in this war of the airwaves. If words of disinfo were bullets, CR & Hond people'd already be dead. They are the first victims (WBI 21/11) Those sandinistas sure are hyper-sensitive, aren't they? CR can't even broadcast a business report without it being taken as aggression; Nic'd like to build a radio-proof wall arnd the country. If they have massive popular support, why worry? (gh)

N I G E R OMN finally hrd nice and clear on 5020 7/12 in FR between 2145 and 2300*. Sat probably best time to hear them as they stay on until 2300; no need to battle Gjirokaster at 0530 (Christos Rigas, Chicago IL)

O M A N R Oman on 9655, from *1503v in AR to 1655*v, often strong since 19/11 (Ernie Behr, Ont, 6/12) R Oman hrd on 6085 in AR at 1400-1600 f/out; G 14/12 (Ernie Behr, Kenora Ont)

P A R A G U A Y R Nacional hrd on 9615 28/11 0137, strong but badly distorted sig (Christos Rigas, Chicago IL) Often noted here following fortnight, or a few kHz lower, messing up R RSA and WHRI (gh)

P E R U R Atlántida noted back on 4790 at 0140 8/12 (Richard A D'Angelo; PA) Returned to 4790 after a spell on 4804, local mx, F-G 1/12, 3/12, 4/12, 5/12 0030-0145 (Monferini, G Galassi, 'PEM', Bernd Grünwald, Play DX) R Atlántida on 4804 morns up from 4790, G but strong het from R Dif Amazonas 4805. But after a couple weeks inexplicably on 4804, from *1000, back on 4790 6/12. (Maxfield Greenwood, Sedgwick ME)

Been noting Andean on 4785 a couple AMs, but too weak to gather ID; 2/12, a good AM LAm opening, hrd distinct R Cooperativa ID. Hadn't noted this stn in over 3 yrs, and then only once. I can assure it wasn't Combeima this morn. Sig marginal fair, ID 1015, mx w/out variation, quite 'native' Andean. That R An-ash on 4991 is putting in one beautiful sig until the Barquisimeto carrier comes on. Very nice stn for Andean mx, 12/12 & 6/12. (Maxfield Greenwood, Maine)

P H I L I P P I N E S Radyo Pilipinas, 9578, *0700 in US-accented EG; into nx 0705. Ancs at "9.580 MHz," ID as "National Media Production Center", etc., as in WRTH. Low mod, fairly weak; "week carrier" in Dec LN-25 should read "weak"

(Richard Wood, Hilo HI) Obviously (gh)

FEBC Manila is a stn which provides a game to test one's skills in hunting fqs. Their fq dept seems to be in a mess. Printed skeds are often outdated. I rarely look into the lang svcs, but if EG is an indication, it has to be dreadful! EG to India/SAs on 11815 at 0000-0300; 11850 1300-1600; 1430-1600 also on 9670 as of 19/10. Listen to DX Dial Tues 1330-1400 for Alok das Gupta and his new DX pgm (Victor Goonetilleke, Sri Lanka, UADX Aug-Oct)

P O L A N D Warsaw very strong at 1246 26/10 on odd & unlisted 9457 in EG to Af (Mick Ogrizek, Australian DX News Dec)

R W A N D A In response to unID section in Dec LN, am almost 100% positive that D'Angelo's 3331 unID is Rwanda; also happened to tune in at this time and hrd stn. Have it on tape, almost 20min, and at exactly 0402:29 you can make out an ID as "Vous écoutez Radio Rwanda". I've played this part of tape repeatedly and am positive of what I'm hearing (Tom Laskowski, W Lafayette IN)

S A I P A N FEBC's stn KFBS since 1/9 is bcng to India 0100-0200 on 15305 & 17875 in Ind verns such as Malayalam 0130-0200 ('JJB--Jose Jacob?', UADX) Sinhala 0115-0130(Sun 0145). This svc //FEBA Seychelles. Pgm's prerecorded using FEBA tuning sig and ID, so at 0100 preceding the pgm and after the KFBS amnt you will hear the FEBA tuning sig. There ought to be a few loggings of FEBA Seychelles here in the DX press! (Victor Goonetilleke, Sri Lanka, UADX Aug-Oct)

S A ' U D I A R A B I A unID on 9707v noted for several months, usually just a weak open carrier; varies to 9709; from 1400 past 1600 vy irreg, not daily; 2/12 first time hrd fair audio on 9707, from 1500 pop mx & FR amnt, 1530 FR nx & more mx; 1600 EG nx, 1615 EG pgm rvw and talk about Holy Koran; then faded. many xmtr breaks, carrier still there past 1700; 3/12 on 9709 w/weak OC from 1400, not hrd since. Don't believe this is Mauritius as reported on SWID 30/11; MBC never varied from 9709.4 and s/off was always at 1300. How about Saudi Arabia? [Later:] BSKSA was the unID on 9707-9v in FR & EG; since 7/12 hrd on new 9739.5 w/weak sig & het past 2000; 14/12 had G sig from 1500 FR, 1600 EG (Ernie Behr, Kenora Ont, 14/12) BSKSA on 9640 in SAs lang *1500-1553* v 28/11 but what lang? (Ernie Behr) see also BANGLADESH

S E Y C H E L L E S FEBA has DX pgm in HH [sic--presumably Hindi] of 5 min duration every Sat 1410; only such pgm in HH anywhere. General interest topics raised with Christopher Singh behind the mike (unID contributor #351, IDXC1) No fq given; see Dec LN. Also see SAIPAN above

S P A I N Monitoring research 4-8/12 shows SFR in EG: 00-01 & 01-02 NAM on 11880 9630. 05-06 NAM 9630 6055. 1830-1930 Eu 15375 9765 6020. 1930-2030 ME/Af unconfirmed on sked 15375 9745. 23-24 Eu 9570 7105 (WBI 12/12)

S R I L A N K A Good nx for tropical band DXers: 4902, perhaps widest-hrd SLBC channel for HS in Sinhala, has returned to the air; now *2325, 1740*; 60m DS channels sked: 4870 10 kW 2325-0230 & 1030-1740 S. 4902 10 kW 2325-0230, 0930-1740 S. 4940 10 kW 0030-0300, 1030-1730 E. 5020 10 kW 0030-0300, 1030-1730 T. 4968 10 kW 1130-14 education S. S=Sinhala, E=English, T=Tamil (Victor Goonetilleke, Sri Lanka, UADX)

S Y R I A Prime Minister issued statement that clox are to be turned back 60m at midnight 25/11, until midnight 16/2/86 (Syrian TV, AR 1730 19/11 via WBI 28/11) I.e., relatively brief 'winter time' of GMT+2 instead of GMT+3 rest of year; and seems to have affected timing of extl svcs of R Damascus (gh)

T A N Z A N I A R Tanzania, 9684, from 1815 V of Namibia in EG & vern, 1900 EG nx & NA to 1915*; strong 28/11 (Ernie Behr, Kenora Ont)

T I B E T Tentative here, as in past couple years has been active fq for Lhasa in CH lang, and hrd here at up to fair lvl. Today 13/12, first day this winter w/decent audio, and hearing W going on in CH from 1115 t/in; but severe QRN buildup made any chance of ID impossible; but fair chance this is Lhasa. Further monitoring of this plagued by strong Morse sig, but Lhasa in at 31241 w/

moments of overall 3 but in general suspect this is Lhasa (Maxfield Greenwood, Sedgwick ME) Fq omitted, & I'm not even going to try to guess this one (gh)

TURKEY VOT and 7/12 that the DX show on Sats'll be cut back to fortnightly basis in 1986. Cutback blamed on lack of contris from listeners and other sources. Contributions are invited to attn of the DX Editor. I've found reception of 2100 xmsn on 7215, and 2300 on 7215 & 9560 exceedingly difficult lately. 2100, stateside ham QRM; 2300 7215 Moscow-covered, and 9560 mangled by I think, Sofia. 2300 other and fqs 9730 & 6105 not detectable in noise (Tom Sundstrom, NJ)

VOT on 9675, from *1458 IS & Chinese pgm to 1527*, G 4/12; unID on 5985 seems TK at 1900-2030, but not // 9660 in TK (Ernie Behr, Kenora Ont)

Text of a TASS report from Ankara, "Permission will be refused". Per newspaper "Gunes", Turkey'll not agree to US proposal to instal VOA SW xmtr on Mt Ararat for being to USSR. Cites Turk For Ministry statement which says "We are not taking part in a radio war." Two years ago, W Germany asked Ankara to allow RFE to bc from Turk terr, but met w/categorical refusal. Reaction to US proposal'll be the same, because Turkey's striving to maintain good neighbourly relations w/Soviet Union (Pravda, 15/11 via WBI 28/11)

UGANDA Mr Kigongo said the NRA [National Resistance Army][radio] stn V of Resistance in Kasese was now opl and the people in 'liberated' zones were now getting info of all kinds. "It is a vehicle of informing and educating the masses of their rights and obligations," he added... (Sunday Nation, Nairobi, 17/11 via WBI 21/11) Mr Kigongo was described earlier in the report as the Chairman of the National Resistance Council and the chief administrator of the area controlled by the National Resistance Movement. Kasese is near the border with Zaire some 175 mi W of Kampala. This radio has been rumoured to have been in opn since at least the beginning of Oct, possibly in the 49m band (BECMS ed. note, 21/11)

U S S R R Vilnius DS provides G reception on 9710 via Kaunas, after Australia-leaves fq at 1430. Pgmng is in Lith & RS; 1500 ID as "Govorit Vilnius" (Rigas)

R Moscow WS obs on following fqs: 0000 15570. 0100 15570. 0200 & 0300 not. 0400 on 6000 6130 6200 7150 7165 9490. 0500 5915 5980 7150 7165 7320 7360 6200. 0600 5980 6200 7150 7165 7310 7440 11670. 0700 7165 9450 9490 9875 11670. Not obs at 08, 09, 10, 11. 1200 on 6000 15135 15475. 1300 on 9450 9575 9755 9820 9875 7265 11705 11840 11900 12010 12055 13665 13705 15135 15150 15475 15550 15585 17655. 1400 on 5900 5950 5980 6050 7150 7265 7345 9450 9820 9875 11705 11840 11850 11900 12010 12055 13665 13705 15135 15150 15475 15585 17655. 1500 on 5900 5950 5980 6050 7150 7345 9450 9630 9775 9875 11670 11840 11850 13705 15475. 1600 5900 5950 5980 7150 7245 7345 11840 13705 15475.

1700 5900 5950 7150 7245 7400 11840. 1800 5900 7150 7245 7290 7400 11840. 1900 7150 7290 7400 11840. 2000 7245 7290 11840. 2100 5915 5980 6020 7290 7310 9450 9840 11840 12050. 2200 4045 4060 5915 6020 6175 7115 7135 7175 7290 7310 9450 12050 15425 17700. 2300 on 15570. R Moscow Af svc: 17-18 on 9470 9490; 20-21 on 9470. R Moscow to British Isles 20-21 on 7150 7400. R Moskau in German 1600-2130 on 7360 (Christos Rigas, Chicago IL)

R Kiev in EG: 0030-01 Am 12055 11860 11790 9765 7205 7165 5905. 0300-0330 Am on 11860 11790 9765 7205 7165 6020 6000. 1900-1930 Eu 7230 6165 6090 6010.

R Vilnius in EG: 2230-23 Eu 6100 666. 23-2330 Am 11860 9765 7165 5905.

R Minsk in Belorussian uos: 18-1830 Eu 6045 5985 (First Sat of month in German instead); 2130-22 Eu 6200 6185 (2nd & 4th Sat in GM) (WBI 28/11)

Estonian R, Tallinn, ES on SW: Sun 08-09 FN 5925, Sun 09-0930 SD 5925. Sun 0930-2100 Eu relay first pgm in ET on 5925. M-Sat 16-1630 FN 5925. 1630-21 M-Sa ET Pgm I 5925. 2105-2135 daily SD 5925, 2135-2205 daily ET 5925 (WBI 5/12)

R Dushanbe, ES on 1143 and SW: 02-03 & 1230-13 Dari 4975. 14-15 Dari, 1530-16 & 1730-18 Persian, 18-1830 Dari, all on 7275 (WBI 5/12)

Kazakh R, Alma-Ata, ES in KZ to As on 5915 & 5035: 00-0030, 01-0130, 1330-14, 14-1430, 1500-1530, 16-1630 (WBI 5/12)

Latvian R, Riga, ES on SW 5935: 08-0830 Sun SD. 0830-0925 Sun LT. 12-13 M/W/T/S RS Rstantsiya Atlantika. Sun 15-16 incl Atlantika 1510-16. 1930-20 Wed LT. 2020-2050 T/T/S SD. 2050-2130 T/T/S LT. 2103-2200 Sun LT. 2130-2200 Wed LT. 2130-2200 T/T/S SD (WBI 5/12)

R Magallanes in SP to Chile via R Moscow: 02-0230 9875 9710 9650 9640 9490

7440 7335 7240 7160 7120. 0330-04 9875 9850 9710 9650 9640 9490 7440 7335 7240 7160. (WBI 12/12)

R Moscow full sked given by BBC MS 12/12. Several svcs on only two or three fqs, but would you believe one on only one fq?! At least hrd by BBCMS on only one--Dari at 17-18 daily on 9715. They missed the RMWS Cuban relays on 6000 & 11840, so the schedule may not be too complete (gh)

U A E V of the UAE, Abu Dhabi hrd on 9595 in AR *1500-2127*v, since 24/11, but u/Sofia in AR from 1530; also on //7290 from 1700 (Ernie Behr, Ont, 6/12) UAE Radio, Dubai now hrd on 9595 from 1400 in AR, 1600 in EG, strong 14/12, but u/Sofia from 1530. Abu Dhabi was on 9595 since 23/11, but gone since early Dec (Ernie Behr, Ont, 14/12)

U K O G B A N I An independent AR-lang bcng stn is expected to be set up in London soon at a cost of over 120 kilopoundsterling. Idea adopted by an Egyptian businessman, Majdi al-'Ashmawi, is that stn'll bc only in AR and'll concentrate on nx of the growing Arab community in London. Expected to begin in Mar 86 (Al-Qabas, Kuwait, in AR 16/11 via WBI 28/11)

U S A R Earth has always preferred one hour nightly, but for the past several months has settled for 3 hours Sunday afternoon via KCBI, Dallas. That stn still isn't ready to bc at night, so as of 6/1, R Earth switches to the brand-new evangelical SW stn in Noblesville IN, WHRI, World Harvest Radio, UTC Tue-Sun at 0300-0400 on 6155. Unfortunately, Austrian R also moved to 6155 in mid-Dec to escape QRMoscow on 6000. In Florida, ORF & WHRI are about equal strength; ORF should have gone back to 5945 (gh)

WHRI planned to be on the air 24h as follows: 11-13 on 5995, 13-15 on 11790, 15-17 on 15105, 17-19 on 15355, 19-21 on 11865, 21-23 on 9779 [sic--obviously a typo for 9770 where actually hrd], 23-01 on 11780, 01-03 on 9745 [ex-9615 during test phase which QRMd RSA], 03-06 on 6155, 06-08 on 6100, 08-11 on 7355 (gh)

WHRI hrd testing on 9770 at 2115-2255* 6/12, EG IDs & test tones only, 555 sig w/hum; also on 11780 at 2315 u/Brazil, tho many fqs are vacant on 25m; why don't they turn on a rcvr? WHRI QRMs VOA in PT on 9770 and Austria on 6155 (Ernie Behr, Kenora Ont)

World Harvest Radio hrd testing 5/12 at 0416, tones and voice IDs, amnts. On 6155; said regular sked'd start Xmas Day; hrd again 8/12 1627 on 15105, 9/12 at 1423 on 11790 (Rigas; Chicago IL)

Also hrd 5/12 on 9615 arnd 0240, clear from R RSA after 0256 w/ID, asking for reports to P O Box 50250, Indianapolis IN 46250 (Grant Lochmiller, IA)

WYFR at it again, 0300 SP on 9660, over Rumbos, // 9680 9715; 7355 VOFC relay in EG 22-2300*, // 6155 21/11 (Ernie Behr, Kenora Ont) VOFC hrd w/new? EG via WYFR 22-23 on 7355 & 6155 7/12 (Grant Lochmiller, IA)

Harmonic 3160, 8/12 0630-0805+ hrd w/ABC Talkradio pgm; easy to get ID after hearing possibility that KABC 790 x 4 hrd here, right? Wrong! ID at 0730 8/12 sounded like FM 102 from Albuquerque, and at 0800 CBS nx! Now confused, check an old FM Atlas and find no listing under 102 then for Albuq, so 9/12 checked 3160 arnd 0055 and hrd CBS NFL pgm and at 0100 partial ID as KBIA. Nothing in WRTH for NM under 790 so I check 1580 and find KZIA which I assume is the answer as I don't want any more surprises, hi! (Grant Lochmiller, IA). As reported in DXLD-1, KZIA was indeed audible on 3160 while I was in OK recently (gh)

WRNO sked hrd on the air 8/12: *1730-2100 15420, 21-2230 11705, 2230-2400 9852, 0000-0400 7355, 0400-s/off, whenever that is, on 6185 (Tim Davisson, Cuyahoga Falls OH) Not including AN Sun sked, 21/12 noted Vatican Radio left 6185 at 0415, tho not sked to do so; if this keeps up, removes Papist QRM to last half of that airing of World of Radio, at least (gh)

AFRTS fair w/EG nx 2305 on 11765 (Ralph Sutton, Khandallah, New Zealand, Nov NZ DX Times) Another unsked fq; AFRTS-LA acknowledges published sked only (gh)

V E N E Z U E L A R Yaracuy w/G sig on 4940, apx *0957 (Maxfield Greenwood, ME, late Nov just missing last LN deadline) Re the Venezuela Irredenta item in Dec LN-28, BBC WS World Today feature on Guyana 8/12 described the Venez claim as 2/3 of Guyana's territory. It is featured on a set of Venez postage stamps, including a historic London-published map showing land up to the Essequibo as part of Venezuela (Richard E Wood, Hilo HI) Speaking from experience, every country really ought to have a Florida-like appendage (gh)

YEMEN NORTHWEST R Sanaa, 9779.4, at 1600-1630, "Saut ul-Filistin", own AR pgm & NA to 2111*, 19/11, varies to 2108*; vy strong (Ernie Behr, Kenora Ont)

YEMEN SOUTHEAST Aden on 7190 has "Saut ul-Filistin", at 1820-1900, own AR pgm & NA to 2100* 20/11; E sig sounds like 250 or 500 kW (Ernie Behr, Kenora Ont)

Z A I R E Tent, on 5066 w/audio u/strong ute at 0437, possible vern talk & unID mx 11/12. Probably R Candip, given condx this night. Would've been able to copy w/out ute QRM (Jeff Stover, Lock Haven PA)

CLANDESTINE CRANNY Radio SPLA R SPLA has received directives from the Commander-in-Chief of the Sudan People's Liberation Army and Chairman of the Sudan Peoples Liberation Movement Provisional Executive Committee to introduce the Ingessana and Toposa langs into the nationalities svc of R SPLA. Accordingly, preparations have already been started by stn staff to commence them ASAP (WBI 12/12)

V of the Turkish Communist Party daily bcs in TK for 50 mins: 05, 06, 09, 10, 13, 14, 17, 18 on 9585; 21 & 22 on 6200. During summer time all xmsns one hour earlier. BCs called this, Turkiye Komünist Partisinin Sesi, first hrd Jan 1971, the similar monthly xmsn aimed at Turk workers in W Germany by pro-communist Free Stn 904 began in 1968. SW svc believed to be from GDR xmtr introed 15/12. Twice-weekly bc on MW from GDR thought discontinued before 23/11/78. VTCP bcs on behalf of CP Turkey and is closely linked w/Our Radio with whom it shares a xmtr; gives addr.as: Box 16-367, S-103 27 Stockholm, Sweden (WBI 5/12)

Our Radio daily in TK for 50 mins: 03, 04, 07, 08, 11, 12, 15, 16 on 9585; 19 & 20 on 6200. Supports CP Turkey and linked to above stn; first hrd 21/3/58. Some xmsns emanate from xmtr believed in GDR, one hour earlier during DST, i.e. those above. The svcs below believed from Romania, not affected by summer time --daily 30 mins 1015, 1445 on 9500; 20 & 2030 on 5915 (WBI 5/12)

V of Tamil Eelam, ancg addr from 28/9 as: 11 Deshlar Veethi, Vadapalani, Madras 600026, India. A report to them has brought the reply that I am the very first person to receive their certificate of reception! V/s is A. S. Skantha. They also read my letter on the air. Planning mbg pgm. Current sked is 0130-0230 Wed, 0230-0330 Sat & Sun, 1030-1130 Wed, Sat, Sun; also testing on Wed, Sat Sun at 14-15. Fq near 7000v. Langs are Tamil, English, Sinhala. Not much jamming nowadays. Meanwhile, stn of the Eelam Peoples Revolutionary Liberation Front has disappeared after some tests in Sept (Jose Jacob, IDXC1 ADXR)

August-October 1985:

UADX SW INFORMATION

UADX 117/4

CLANDESTINE: Liberation Tigers of Tamil Eelam is soon to air regular programmes. Have been hearing them for 2 months now at 1030-1045 when SLBC's Tamil Service on 6150 leaves the air at 1029 UTC testing. Test transmissions consist of Eelam songs, messages to LTTE army men and news. It is on the air on Tuesdays. Not jammed. Some reports say that these broadcasts are made from the Madurai Hills South India (M.K.S. Jawahar Tamil Nadu) I have no info on this. Tried on one Tuesday but not heard (Jacob) Tamil Eelam Liberation Organisation (TELO) is also to begin broadcasts soon. (M.K.S. Jawahar) Above info via Jose Jacob Keila State S. India) In August the EPRLF-Eelam Peoples Revolutionary Liberation Front carried out some tests on approx 7020 from around 1000-1030 announcing that they would commence regular transmissions and also give a name for its station. However nothing more has been heard for well over a month. The only currently active station is the Voice of Tamil Eelam which is jammed, but most often unjammed now adays. Programming is uninspiring and a lot of leftist anti government stuff is transmitted. The signal now altho strong is distorted and has modulation problems. I doubt more than a curious interest in the programmes exist especially because there is no press censorship in Sri Lanka and a more radical leftist and anti government newspaper-not one but quite a few-can be bought in any Newsstand.

A more interesting thing has been happening since September. VOTE now announces an address in Madras asking listeners to write in. Our member and keen DXers Jose has got a first in the world to write in QSL from them. I don't think they will get any letters from Sri Lanka, of a helpful nature anyway.

All the above reports and developments and detection finding show without any shade of doubt that like the military operations of the Tamil Terrorists, all broadcasting efforts have come from Tamil Nadu in South India. On the 40 metre ham band its often common practice for Sri Lankan hams to be interfered with by unidentified carriers and CW transmissions. We have also been sent on CW (morse) greetings of a 4 letter kind which can not be printed here. According to some Indian hams bogus call signs are used by some of the terrorists to get signal reports etc from hams. As we experience and our contacts have shown most Indian Hams are sick of these operations. When the Sikhs in Britain hired air time over R. Luxembourg the Indian government protested and Britain and Luxembourg took immediate action to stop it and we hear that on Premier Rajiv Gandhi's recent visit he got the assurance from Mrs Thatcher that the UK would not permit such and other militant activity in UK against India. Its so sad that a country which seeks such assurances from UK and accuses Pakistan of helping Panjabi Terrorists, tolerates the blatant military and communications war being waged by Tamil terrorists who claim to be massacred in Sri Lanka, where as the Sri Lankan government is fighting a war of survival to ensure its independence and freedom of a population of 14 million of which the Sinhalese number 10 million and at whom and our country a war is being directed with the sympathy of 60 million people in Tamil Nadu if we can go by the propaganda of separatists who claim that 10 million Sinhalese in Sri Lanka are trying to exterminate 3 million Tamils!! Its really a 60million Tamil onslaught against 10 million.

La Voz del CID hrd on new 11634.5, in SP 1800-2255*v; 11/12 until 2302*; //9940 much stronger (Ernie Behr, Kenora Ont)

At 1638 on 11635 27/11, Música Libre pgm, 1700 ID //9940. At 0143 28/11 on 7380 (Christos Rigas, Chicago IL)

In SP 27/11 0505-0515 on 6034.7, F (Bernd Grünwald, GFR, Play-IX) Probably typo for 6304.7, but in fq order between 5199.6 and 6205 (gh)

NORTH AMERICAN PIRATES KBFA, 15/12 0221-0305*, Broadcasters of Free America, back on 7424v. Featured rock mx format, ancr named Dee Archer (male), QSL addr given as 76 N Broadway, Hicksville NY 11801 (Pop Comm addr). Several mx jingles for IDs, and after "Cocaine" by Clapton, mx, including reports of air disaster in Canada, car sales. S/off gave power as 200 W on 7425; SIO varied 211 at 0220 to 343 at 0250; due to other pirate on 7425 at same time (Robert J Schukai Jr, Terre Haute IN)

CFMI-101 2nd pirate was on from 0152 until apx 0248; don't know exact s/off time as was trying to listen to both stns at same time; this was on 7425 w/no variation; no ID ever, since it only relayed Canadian stn CFMI-101. At 0152 ski reports w/TCs at 0306, 0319, 0333, corresponding locally to 6:06, 6:19, 6:33 [GMT -9??]; beer, car ads, pop mx, SIO 222 (Robert J Schukai, Terre Haute IN)

UNIDENTIFIED 9708.7 23/11 1133-1250 M singing light tunes of an unknown culture. Lang sounds slavic at times, latin at others; 1200 ID as Voice of something, very clear and English-sounding; out of phase w/slight echo effect arnd 1245; no idea who this is; poor 23/11 (Chuck Bolland, Lake Worth FL) See SAUDI ARABIA

7143v AR stn 1830-2030+, strong 21/11, varies to 7145 (Ernie Behr, Ont)

6154.7 25/11 1033-1101 SP, hrd daily, never really well enough to get clear copy; 1030-1100 steady period of nx, sports, two men and a woman. Name of pgm is "Radio Panorama". Sig improves towards 1100, but VOA s/on 6140 destroying about 30 kHz on each side. Unsure if Bolivia or Peru; during nx hrd numerous SAM countries ment'd (Chuck Bolland, Lake Worth FL)

5005 [fq omitted but assumed] Sarawak or Nepal? Didn't t/in until 1215. Sensual sing-song mx, gongs, like Indonesian; no Nepal IS at 1220 [why would there be?] but W nx to 1227 mx; lang too lost in QRM to determine (Maxfield Greenwood, ME)

4753 Arabic stn 2200+, ME mx, M talk, flute IS, marginal; also noted two years ago and hoping for some ID since; now hearing again and beginning to bug me (Maxfield Greenwood, Sedgwick ME)

Until the next, 73 de Glenn



QSLs

Send your reports to:

Sam Barto, QSL Editor
47 Prospect Place
Bristol, CT 06010 USA

ANTIGUA: Deutsche Welle 6040 n/d cd. in 1 mo. w/ sticker and schedule. (Mosier-CA).

ARGENTINA: RAE 9690 f/d "Logo" cd. in 44 ds. (Levison-PA).

9690 and 11710 n/d cd. w/ paper pennant in 2 mo. (Niekamp)

ASCENSION ISLAND: BBC 15260 f/d ltr. w/ station photo in 8 mo. v/s S. Hurst, Maintenance Engineer. (Talbot-ALB).

ASIATIC RUSSIA: Radio Moscow 15420 via Petroplavsk-Kamchatsky cd. in 62 ds. (Weber-OH). 12050 via Khabarovsk f/d "Lenin Library" cd. in 31 ds. (Mosier).

AUSTRALIA: VLR6 6150 via Lyndhurst f/d "ABC" cd. in 35 ds. for 2 IRCs. (Renfrew). VLW9 9610 via Perth f/d cd. in 28 ds. (Levison). same in 63 ds. for 2 IRCs. (Weber). Radio Australia 17715 via Carnarvon f/d cd. in 20 ds. (McDaniel). 9770 f/d "Tasmania" cd. w/ sticker in 6 wks. (Talbot). f/d "Forest Kingfisher" cd. in 35 ds. for 1 IRC. (Buer-FL). 17750 via Darwin cd. in 35 ds. for 1 IRC. (Buer). 5995 via Lyndhurst f/d cd. in 40 ds. (Renfrew). 6045 f/d "Black Swans" cd. in 35 ds. v/s Peter Barnett. (Buer). 9580 f/d cd. in 15 ds. for 2 IRCs. (Kacir-MI). f/d "Woodchopping" cd. in 35 ds. (Buer).

AUSTRIA: ORF 9635 f/d cd. in 2 mo. (Bowden-CA). 6000 cd. in 67 ds. (Levison). same in 6 wks. (Bowden).

AZERBAIJAN SSR: Radio Baku 4785 and 4957.5 f/d white cds. in 7 mo. for a RS rpt. (Barto-CT).

BANGLADESH: Radio Bangladesh 9775 f/d ltr. w/ schedule in 47 ds. v/s Md. Abdur Rashid. (Forsgren-WI).

BELGIUM: BRT 9880 f/d "Brugge" cd. in 6 wks. (Bowden). same in 5 wks. (Bowden). 5910 f/d ltr. in 35 ds. (McDaniel). 9925 f/d cd. in 1 mo. (Bowden). f/d "Antwerp" cd. in 5 wks. (Bowden). 5910 and 15590 f/d cd. in 44 ds. (Niekamp).

BELIZE: Radio Belize 3285 f/d cd. in 31 ds. for 1 IRC. (McDaniel).

BONAIRE: TWR 9535 f/d "Underwater Beauty" cd. in 30 ds. for 2 IRCs v/s Sally Park. (Mosier).

BRASIL: Radio Bras 11745 f/d "Iguaza Falls" cd. in 36 ds. for 2 IRCs. (Kacir). cd. in 3 wks. (Bowden). f/d cd. in 31 ds. for 1 IRC. (Mosier). Radio Nacional Manaus 4845 f/d "Teatro Amazonas" cd. in 56 ds. for a PT rpt. and 2 IRCs. v/s Eudson Monteiro de Lima. (Woloch-QUE). Radio Clube Riberiao Preto 15414 n/d ltr. w/ stickers in 28 ds. for a PT rpt. and ms. v/s Paulo Pizani. (Wilkins-CO). Radio Aparecida 9635 f/d cd. in 22 ds. for a PT rpt. and 2 IRCs. (Paszkiewicz-WI). Radio Anhanguera 4915 f/d form ltr. in 25 ds. for a PT rpt. and SASE. (Plum-NJ). in 26 ds. for a PT rpt. and 1 IRC. (Schmitz-FRG).

BURKINA FASO: Radiodiffusion du Burkina 4815 f/d form ltr. in 1 mo. for a FR rpt. and ms. (Isen).

CANADA: CKZU 6160 p/d "CBC Centre" cd. in 23 ds. for 1 IRC. v/s D. J. Horner. (Wilkins). same in 5 wks. (Bowden). RCI 9755 f/d cd. in 19 ds. (George-NC).

i listen to
THE ENGLISH SERVICE
of
Radio Veritas Asia

 0200 - 0225 Hours UTC - 19 mb
1500 - 1530 Hours UTC - 31 mb



ENGLISH SERVICE
9th ANNIVERSARY
MARCH 8, 1976 - MARCH 8, 1985

ADDRESS:
ENGLISH SERVICE
RADIO VERITAS
P.O. BOX 839
MANILA, PHILIPPINES

via Bill Fulton

WORLD CHRISTIAN BROADCASTING CORPORATION
 P.O. Box 473
 Ann Arbor, Mich. 48106
 July 14, 1982

Mr. Donald M. Hoemer
 2450 Union
 Dearborn, Michigan 48124

Dear Mr. Hoemer:

Thank you for your letter of July 8, 1982 reporting your reception of our test signals at 2125 UT on July 1, 1982. You may be interested to know that you were among the first to receive our signals. Only two other listeners have reported actual reception.

We have now completed our tests and will begin on-air with regular programming as soon as the FCC has time to review our test results, perhaps before the end of July. Our initial programming will be in Russian and Mandarin Chinese. We will probably not offer English language programs eventually.

Enclosed are some brochures about WCB and its scheduled programming.

Sincerely,
 Frederick M. Perry
 Director of Operations

COOK ISLANDS: Radio Cook Islands 11760 f/d cd. in 2 mo. for 2 IRCs. v/s N. Tangoroa. (Isen).

COSTA RICA: TIFC 5055 p/d cd. w/ pennant in 13 ds. (McDaniel). TILX 4850 f/d cd. in 51 ds. for a SP rpt. (Ondrechen).

CUBA: Radio Moscow 9600 via Habana f/d "Rowing Canal" cd. in 26 ds. (Mosier). Radio Habana 6100 f/d cd. in 3 mo. (Bowden). 6140 f/d "Horseback Riding" cd. in 3 mo. (Bowden). 9740 f/d "Dormitories" cd. in 3 mo. (Bowden).

CZECHOSLOVAKIA: Radio Praha 5930 f/d "Ceremonial Costumes" cd. in 1 mo. (McDaniel). f/d cd. in 3 mo. w/ schedule (France). 7345 f/d cd. in 20 ds. (Levison).

VERIFICATION SIGNERS: La Voz de Carabobo 4780 Thamara Moratinos. Radio Rebelde 5025 Francisco Luna, Director of Correspondencia. Radio Nacional 4926 Agustin Edu Esono. Azad Kashmir Radio 4790 Yarum Hamad Khan, Engineer Manager. Radio Calabria International 13630 Vincenzo Naymo, Technical Director. Swazi Commercial Radio 4980 Derek Shaw, QSL Manager and Technical Director. KGEI 11715 Alex Vincenti and Nadia Kozned, Russian Service. Radio Frecuencia Siete 7010 Gregorio Sanchez Araujo, Gerente. Radio Bambamarca 5657 Augusto Arana Morales, Gerente. Radio Kara 3222 Mialintche Lare, Secretary. Capital Radio 3930 J. Van Hoogstrateh, Director. Radio Capital 4850 Manuel Correa, Gerente. Radio Buea 3970 Peterson Chia. Radio Popular de Cuenca 4801 Manea de Villavicencio. Radio Federation Shuar 4960 Luis Mario Katan. RRI Ujung Pandang 4752 H.A. Nyongki B.A. Radio Bata 15110 Perry F. Rockwood, Pastor. Radio Tezulutlan 4835 Elsa Yolanda Castro Och, Secretary. Radio Acobamba 5325 Felipe Andrade Cardenas, Gerente.

DENMARK: Radio Denmark 15165 and 6030 f/d cds. in 3 wks. (France).

ECUADOR: HCJR 6095 f/d "Taxis" cd. in 42 ds. for 2 IRCs. (Woloch). Radio Catolica Nacional 5055 n/d ltr. w/ vinal pennant in 32 ds. for a SP rpt. and ms. (Niekamp). Emisoras Gran Colombia 4911 f/d prepared cd. in 88 ds.

To David Rose
 Box 206
 June 26, 1981 0122-0116 UTC
 via 1425 kHz
 from My Blue Sky
 via 1425 kHz
 TXN FOR REPORT PLEASE WRITE AGAIN

Dear David:

Thank you very much for the report. You are our first Canadian listener! Since you are our first Canadian listener we decided to do something extra special for you - our first QSL letter we have used yet! I don't want to be boastful, but I think this is an awfully pretty verification for a letter. I was going to give you our regular card with the Radio 5BX "mailing station" on the front. I gave the card in extra special to me since I drew it. Well, now about the report, the phone number is well concerned a commercial. For some reason, I do not enter all of the details of the broadcast into my log so I don't know the exact time played, except the last 2. It'll be within 10m to 20m and Top News is not here either. I hope that you don't mind my sending this QSL letter instead of the card.

It should be on August 21, 1981 UTC probably on 1425 kHz. Although we don't really like that frequency because it is more or less overused, the best time to listen for us are weekend nights at 0100-0500 UTC on 7370 kHz.

For a much better guide to Free Radio stations, copies & subscribe to the ACE, a magazine devoted to clandestine radio. It is the best newsletter on the market for anyone interested in "unauthorized, unknown or unlicensed" radio. You can write to them at this address (the address is also our temporary box):

Radio 5BX of the ACE
 PO BOX 124
 HONOLULU, HI 96808

Unfortunately this address is only temporary, it should soon be somewhere in Hawaii, but you can continue to contact us through the ACE box. If you decide to get the ACE, you will be updated on our address.

Thank you very much for your report. It helps us out a lot. Please report it to the FRENCH QSL Column. If you hear us again please write about you, yourself, hobbies and our program format such as you may want to hear our political thoughts or you might want to hear classical music or whatever. We would love to hear from you again.

Flirt for P&S Radio!

My Blue Sky
 PO Box 206
 June 26, 1981

Operator
 David Rose
 Gekeliver
 Amichiller

for a SP rpt. and ms. (Wilkins). La Voz del Upano 5040 p/d cd. in 37 ds. for a SP rpt. and ms. (Niekamp). f/d prepared cd. in 32 ds. for an SASE. v/s Prof. Luis Rivedeneira R., Director. (Plum). CRE 4656 n/d ltr. w/ pennant and sticker in 124 ds. for a SP rpt. v/s Alicia de Blasio. (Forsgren)

ENGLAND: VOA 9760 via Wooferton f/d cd. in 17 ds. (George-NC).

GABON: Radio Japan 9570 via Movabi p/d "Lights of Hakodate" cd. in 5 mo. (Barto). Africa #1 17820 and 15200 p/d cd. in 3 mo. for a FR rpt. (Barto).

GERMANY, FEDERAL REP. OF: Sender Freies Berlin 6190 f/d cd. in 17 ds. (George). Radio Bremen 6190 f/d "Logo" cd. w/ stickers in 69 ds. for 1 IRC. (Reinstein). Deutsche Welle 6145, 6040 and 6085 p/d cd. in 1 mo. (France).

GHANA: GBC 3366 cd. revd. for 3 IRCs. (Dickson). 4915 f/d "Golden Jubilee" cd. in 52 ds. for 3 IRCs. (Ondrechen). same in 58 ds. for 3 IRCs. v/s Nick French. (Weber-OH).

KCBI

DALLAS, TEXAS 75221 U.S.A.

VERIFICATION OF RECEPTION

Frequency 11,790 kHz

Date 7 July 1985

Time 2011 UTC

Thank you for your report. We have checked our records and found it to be accurate.

[Signature]
Engineering Dept.

00080

This is the last report from you. We will keep up the good work! '83

Richard A. D'Angelo
2216 Burkley Drive
Wyanomissing, PA
19510

GREECE: Voice of Greece 9420 f/d cd. in 1 mo. (France). 9420 and 11645 f/d cds. in 79 ds. (McDaniel). 15630 f/d "Theatre" cd. in 7 rc. (Renfrew).

GUAM: KTWR 9870 f/d cd. in 21 ds. (Weber)

GUINEA BISSAU: Radio Nacional 5476 n/d personal ltr. in 310 ds. for 2 IRCs. v/s Fernando Jorge Alves D'Almada. (Rigas-IL).

HUNGARY: Radio Budapest 6025 via Jaszbereny f/d cd. in 43 ds. (Kacir).

INDIA: AIR 9545 f/d cd. in 3 1/2 mo. (Barto)

ISRAEL: IBA 5900 f/d cd. in 65 ds. (McDaniel). 9435 same in 39 ds. (Mosier).

RADIO DATABASE INTERNATIONAL: We have just received a copy of the new RDI publication from International Broadcasting Services, Ltd., P. O. Box 300, Penn's Park, PA 18943. This very informative publication serves as a quick access guide to shortwave broadcasting schedules. It is a must for all shortwave listeners. It comes highly recommended from your QSL Editor. Please write to the above address for further information.

ITALY: RAI 9575 f/d "Fountain" cd. in 105 ds. for 1 IRC. (Weber).

JAPAN: Radio Japan 15420 p/d "Buddhist" cd. in 21 ds. (Mosier). 17755 p/d cd in 24 ds. (McDaniel). f/d cd. in 22 ds. (Kacir).

KENYA: Voice of Kenya 4804 f/d ltr. in 5 mo. (Barto).

LIBERIA: ELWA 4760 f/d cd. in 5 mo. (Barto-CT).

LIBYA: Radio Jamaheriya 3200 n/d ltr. in 3 mo. v/s Abdulla Elmergi, Director. (Barto). 11815 f/d cd. in 5 mo. (Bowden).

MALAGASY REP: Radio Nederland 9540 f/d cd. in 2 wks. (Ondrechen).

MALTA: Radio Mediterranean 6110 f/d "World Map" cd. in 73 ds. for 3 IRCs. (Weber).

Estadística sirve para comprobar que el Señor Donalds Moore escuchó la emisora Radio Tarquí en la frecuencia de 4977 kHz

19 de sept, 1984
6:50-6:52 am, hora del Ecuador

Gracias por su reporte

Donalds Moore
Senta Barbara
Manzuza

OUT/100000 PERU/15420
VIAZ PERU/50000/15420
BARTO/15 de Septiembre

TIARE PUBLICATIONS: One of the top QSLers in the business, Mr. Gerry Dexter has recently released a new publication entitled Secrets of Successful QSL'ing. This publication serves as a complete guide to reception reports and QSL collecting. It supplies the reader with the ins and outs of follow-up reports, reporting techniques, prepared cards and many other special techniques to obtain that long sought QSL. For further information please contact: Tiare Publications, P. O. Box 493, Lake Geneva, WI. 53147.

MOZAMBIQUE: Radio Mocambique 3264 f/d ltr. in 12 1/2 mo. for a PT rpt. (Barto).

NEWFOUNDLAND: CKZN 6160 f/d "Map" folder cd. in 71 ds v/s D. Uttaro. (Woloch).

NIGERIA: FRCN Ibadan 6050 f/d ltr. in 37 ds. v/s E. A. Kupoluyi. (Forsgren).

PAPUA NEW GUINEA: Radio West Sepik 3205 n/d ltr. in 38 ds. v/s Luke Umbo, Station Manager. (Forsgren). Radio Eastern Highlands 3395 p/d ltr. in 21 ds. v/s Paia Ottawa, Technician. (Forsgren).

PERU: Radio Ancash 4990 f/d ltr. in 85 ds. for a SP rpt. and ms. v/s Armando Moreno Romero, Gerente. (Plum-NJ).

Dear Mr. D'Angelo:

We are pleased to confirm your reception of broadcasts of the Voice of America - Radio Marti Program.

We hope that this confirmation letter will be satisfactory until our QSL cards are printed. You will receive a QSL card when they become available.

The Radio Marti Program broadcasts on medium wave frequency 1180 kHz from 0930 - 1700 and 2030 - 0300 (UTC) (0530 - 1330 and 1630 - 2300 Eastern Daylight Time) with 50,000 watts power. Currently, the Radio Marti Program also broadcasts on shortwave frequencies as noted below:

TIME (UTC)	EASTERN TIME	FREQUENCY	POWER (WATTS)
0930 - 1200	5:30 am - 8:00 am	4075 kHz	250,000
1200 - 1415	8:00 am - 10:15 am	9570 kHz	250,000
1415 - 1730	10:15 am - 1:30 pm	11815 kHz	500,000
2030 - 2300	4:00 pm - 7:00 pm	11930 kHz	500,000
2300 - 0300	7:00 pm - 11:00 pm	9660 kHz	250,000

Starting September 29, 1985, 9570 kHz will change to 9590 kHz.

Thank you for your interest in the Radio Marti Program. We hope you will continue to enjoy our programming.

Sincerely,

Paul P. Schleisman

Paul P. Schleisman
Chief, Technical Operations
Radio Marti Program



NOTE: Copies of QSLs on this page were supplied by Ernie Behr in Canada.

PERU: Radio Huallaga 6363.5 f/d personal ltr. in 3 mo. for a SP rpt. 400 watts. v/s Ruben Rios Silva, Tecnico. Addr: Loreto #654, Saposoa, Prov. Huallaga. (Barto).

QATAR: QBS 15265 f/d "Map" cd. in 118 ds. for 1 IRC. v/s Jasse Mohammed Al-Qattan, Head of Public Relations. (Falkenhan-MD).

ROMANIA: Radio Bucharest 9570 and 9510 f/d cd. in 98 ds. (Levison).

SENEGAL: ORTS 4892 f/d "Logo" cd. in 4 mo. for a FR rpt. (Barto).

SICILY: RAI 7175 via Caltanissetta f/d "Garibaldi" cd. in 376 ds. (Reinstein).

SOUTH AFRICA: Radio 5 3250 f/d "SABC Industry" cd in 27 ds. (Niekamp). cd. in 18 mo. w/ sticker, personal ltr. and books. v/s Colin Miller, Supervisor. (Talbot). Radio RSA 6010 f/d cd. in 25 ds. (Kacir).

VERIFICATION SIGNERS: La Voz del Upano 5040 Padre Luis A. Ricredencia, Director de la Emisora. AWR Forli 7215 Hodgson Sandy, Manager. Radio Chota 6296 Mauro Vasquez Gonzales, Gerente. Radio San Juan de Chota 5274 Raul Rivera Burga. Radio Acunta 5802 Victor R. Hoyas Condor, Presidente. Radio Ilucan 5617 Jose Galvez Salazar. Radio Celendin 7054 Jose Camacho Villar. Radio Moderna 4300 Pompeyo Silva Pereyra. La Voz de Cutervo 4965 Julio Cesar Sanchez Camacho, Gerente. Ondas Quevedenas 3325 Maruja Jaramillo E. La Voz de los Caras 4795 Alejandro E. Nevarez, Gerente. Radio Catolica Nacional 5055 Padre Cirilo Tescaroli, Director. La Voz de Nahuala 3360 Juan Fidel Felipe Juarez, Director. RRI Djakarta 4774 Arsyad Subik. Radio Uganda 5026 L.B. Lubega, Senior Transmitter Planning Engineer. Radiodifusora Amazonas 4805 Jose Joaquim Marinho. Radio Poti 4965 Ademir Ribeiro. Radio Agricultura 9635 Carlos Toledo Verdugo. Radio Comores 3331 Ali Mchagama. Radio Paititi 4682 Prof. Armando Mollinedo Bacarreza, Director. La Cruz del Sur 4875 Pastor Rodolfo Moya Jimenez, Director. Radio Illimani 6025 Fausto Caballero Molino, Director Gerente.



SOUTH AFRICA: SABC 4835 f/d cd. in 45 ds. (Weber). Capital Radio 3930 f/d form ltr. in 29 ds. (Niekamp).

SPAIN: REE 9650 f/d "Parador Nacional" cd. in 2 mo. (Bowden). 9360 f/d cd. in 3 wks. (Bowden). 9630 same cd. in 44 ds. (Kacir).

SWAZILAND: TWR 5955 and 3200 f/d cds. in 26 ds. for 2 IRCs. (Niekamp).

SWEDEN: Radio Sweden International 15345 f/d cd. in 10 ds. (Levison).

SWITZERLAND: Swiss Radio International 9725 f/d cd. in 10 wks. (Eckert-PA). Red Cross Broadcasting Service 15570 p/d "Globe" cd. w/ decal in 1 mo. for 2 IRCs. (Woloch).

TUNISIA: Radio Tunisienne 15225 p/d personal ltr. in 1139 ds. (!) after 7 f/up rpts. w/ * IRCs/ms. Addr: Direction de la Telediffusion Tunisienne, 4, rue de Kenya, 1002 Tunis. (Woloch).

TURKEY: Voice of Turkey 9560 f/d cd. in 18 ds. w/ pennant. (Eckert).

USA: KCBI 11790 f/d cd. in 9 ds. for ms. (George).



A Rádio Clube de Marília é ouvida nos Estados Unidos

A reportagem teve a assistência de ver uma carta e assinada por Mr. Marlin procedente da cidade de Benton Harbor, Michigan, Western Avenue.

Na missiva referida, o signatário informa que ouve perfeitamente bem, a estação de ondas curtas da referida emissora, de prefixo ZYR-62, na frequência de 3.255 quilociclos.

A FRI-2 que já é ouvida em Portugal, na Suíça e em outros países da Europa, é também ouvida nos Estados Unidos da América do Norte. Isto equivale dizer que a vida e os acontecimentos de Marília, através da emissora que nasceu com a cidade, ultrapassam as fronteiras do Estado e do Brasil e chegam também ao conhecimento de povos de outras origens e de outras nações.

Nossos parabéns.

EM SÃO PAULO

CITY Hotel



in 10 ds. (Renfrew). Voice of Free China 5985 via WYFR f/d cd. in 19 ds. (Levison). United Nations Radio 21710 via Greenville cd. in 27 ds.

USA (Pirate): Radio Nova International 7428 f/d ltr. in 39 (McDaniel) ds. v/s Monty Python. (Rigas-IL). Radio Clandestine 7355 f/d form ltr. w/ personal note in 81 ds. for ms. (Weber).

UKRAINIAN SSR: Radio Moscow 7400 via Simferopol f/d cd. w/ pennant and pin in 62 ds. v/s Mrs. Clara Slavina. (Weber). 7210 via Vinnitsa cd. in 62 ds. (Weber). 9720 via Vinnitsa f/d cd. in 62 ds. (Weber). 9700 via Lvov f/d cd. in 62 ds. (Weber).

UZBEKISTAN SSR: Radio Tashkent 9715 f/d "Cotton-Rug" cd. in 65 ds. for 2 IRCs. v/s Florida Sabirova. (Weber).

VATICAN: Radio Vaticano 9605 f/d "Antenna" cd. in 23 ds. (Mosier). 11700 f/d "Leo XIII" cd. in 78 ds. (Levison).

VENEZUELA: Ecos del Torbes 4980 n/d "Map" cd. in 54 ds. for a SP rpt. and 2 IRCs. v/s G. Gonzalez Lovera, Presidente. (Ondrechen). Radio Tachira 4830 n/d cd. in 56 ds. for a SP rpt. and ms. v/s Desiree Gonzales. (Forsgren). Radio Rumbos 9660 f/d cd. in 106 ds. for a SP rpt. and ms.

YEMEN ARAB REP: Radio Sana'a 9780 f/d form ltr. in 96 ds. (Niekamp-MN). for US \$1.00. (Forsgren).

BEST OF DX AND QSLING IN 1986..... Sam

USA: KCBI 11790 f/d cd. in 17 ds. for ms. (Harms-MD). in 34 ds. w/ "Curacao folklore" cd. for ms. v/s Jeff White. (Harms). Radio Marti 11815 via Greenville f/d "Jose Marti" cd. in 145 ds (Harms). 9660 f/d cd. in 3 mc. (McDaniel). f/d cd. in 190 ds. (Gavaras). 9525 same cd. in 33 ds. (Ondrechen). n/d ltr. in 20 ds. for a SP rpt. v/s Paul Schleisman, Jefe de Operaciones Tecnicas. (Mosier). WYFR 15365 f/d cd. in 31 ds. for ms. (Mosier). 15170 f/d cd. in 5 wks. (Bowden). WMLK 15110 n/d ltr. in 29 ds. v/s Elder Jacob O'Meyer. (Rigas). VOA 17785 via Bethany f/d cd. in 48 ds. (Dillon-MD). 9580 f/d cd.

Dear Mr Talbot

Thank you for your reception report. I regret the delay in replying to your report. Answering listener's letters is not part of my normal duties and therefore has to be fitted in as time permits. Your letter took five months to arrive!

I can confirm that your report is correct. This station was broadcasting on 15.26 MHz between 1818 and 1910 GMT on the 12th of April 1985.

The broadcast you heard was radiated by one of the station's four Marconi 250 kw transmitters. The array is of fan dipole construction being four elements high and two wide. It is suspended between two masts 100 metres high.

I regret that the station does not issue QSL cards however I have enclosed a photograph of the station which I only send to listeners who send me correct reports. I trust this will be of interest.

Yours faithfully

S. Hurst.

S Hurst
Maintenance Engineer
for Resident Engineer



update

January 1986***Number 202

Tom Alleman
636 E. 74th Terr.
Kansas City, MO 64131 USA
(816) 523-7292 7-10pm only

UPCOMING DEADLINES: 10 January (Mid-Jan) 20 January (Feb) 10 February (Mid-Feb)

Reproduction permitted. Credit original reporter and NASWA UPDATE. Dates, times and days GMT: freqs kHz.

BENIN RTVB, Cotonou, 4870, in FR 2145-2215; fair. M dj with local mx. Some US pop and rock mx mixed in. (Falkenhan, MD 11-29)

BOLIVIA R. Fides, 4845.1, in SP 0132-0201*; light mx, chimes, "R. Fides, La Paz, Bolivia," chimes, off with no anthem. Reception was good on 12-7 but strong Brasil QRM other nights. (Howard, CA) ***R. Progreso, 6005.3v, in vern 1000-33; 0951 carrier on, drifts down to 6005.1 after sign on, local mx, several IDs, reception fair-good on 11-26. Not noted on every night. (Howard, CA)

BRASIL R. Guaruja, tentative, 5980, in PT 0845-0936. Sounded like religious prgm, faded out after 0935, only tentative ID. Would take a very good opening for a sure ID. (Howard, CA 11-24,25)

CAMEROON RdfNational, Garoua, 5010, in FR 2000-30; fair w/ ute QRM. Lively high life mx (I guess that's why it's called high life). (Falkenhan, MD 11-29)

CHAD Rdf Nationale, 4904, in FR 2000-30. M DJ in FR. Lots of local mx with a tribal sound. Fair with het. (Falkenhan, MD 11-29)

COSTA RICA R. Impacto, 6159.9, in SP 0425-0536. Talk on Nicaragua, many IDs, pop songs, reception fair-good in early December. (Howard, CA)

EQ. GUINEA R. Nacional, Bata, 5003.7, in SP 2000-2100; M DJ with hilife and regae mx. Many IDs. Fair with het QRM. (Falkenhan, MD 11-29)

GABON Africa No. 1, Libreville, 4810, in FR 2200-2300; good w/ slight het. M dj w/ lively IDs. Lots of foot stomping, mx, regae and hilife. (Falkenhan, MD 11-29)

GHANA GBC, 3366, in EG, 2240; fair w/ ute and Het. M w/ talk about Ghana's economy. (Falkenhan, MD 11-29) ---Same, 4915, in EG 2015-45; fair. African and world mx read by M. Into local lang prgm. (Falkenhan, MD 11-29)

JAPAN NHK Nagoya (listed), 6005.0, in JP and EG 0845-0950. Mostly just talking, some EG clear NHK IDs, 0900 four time clicks, noted in late November. (Howard, CA)

MALI RTVM, Bamako, 4834, in FR 2040-2100; M dj w/ local mx. // 4783. Poor w/ QRM from SABC on 4835. LSB best for this. (Falkenhan, MD 11-29)

NIGER Niamey, 5020, in FR 2030-2105; fair w/ het. Local mx, W dj, into radio drama. (Falkenhan, MD 11-29)

PAKISTAN RP Quetta, 4878.9, in lang 0127-0200; subcont mx, clear ID 0155, reception fair on 12-4. After checking this many times, find that it is not // 5093.6 Islamabad for most of the time. (Howard, CA)***RP Islamabad, 5103.6, in lang 1410-50; Koran, 1416 ID as "R. Pakistan, Islamabad," subcont mx, fading after 1450. Good reception on 11-24. (Howard, CA)

PERU R. Melodia, 5995.7, in SP 0843-0900. Several IDs, vocals, flutes, anncmts, etc. ID and mention of Arequipa 0900. (Barto, CT 12-7) ***RDI lists *0900 so this must be change. tba***R. Pucallpa, 6154.7, in SP 0403-56*. Various kinds of mx, several IDs, anthem 0453. Weak on 11-30. (Howard, CA)***R. Huayabamba, 6281.5, in SP 2342-59. Mostly anncmts by M and one vocal selection. ID 2359. (Barto, CT 12-8)

SAUDI ARABIA Riyadh, 6940, in AR on this new freq // 9655 from 1509. 9655 better. (Tuchscherer, WI)

SENEGAL Dakar, 4892.5, in AR, 2145-2215. M6W w/ endless dialogue, no mx. Talk skov? Poor w/ CW QRM and het. (Falkenhan, MD 11-29)

SOMALIA Mogadischu, 7200, currently with a good signal from 0300. ID at 0330 and nx in Somali. (Tuchscherer, WI)

UAE Dubai, 11955, 12-4 w/ ME mx, EG commentary, EzL mx, nx from 1603. Anncing // to 7195, 15300 and 15320. (Tuchscherer, WI)

We are pleased, as always, to continue with Kraig Krist's fine 49mb EG bandscan, which we began last issue. As I noted at that time, the scan was compiled at Kraig's OTH in Falls Church, VA, between 11-27 and 11-30. Without further ado, then, we pick up at 0400

0400-0430	6090 RHavana	6000 RAustria Intl
5960 RCI	6100 RHavana	6010 BBC
5975 BBC	6120 DW	RBI
5980 RMoscow	6130 DW	6015 WYFR
5990 RBucharest	6165 RNederland	6030 AFRTS
5995 VOA	6175 BBC	6035 VOA
6000 RMoscow	6180 BBC	6040 VOA
6020 BBC	6185 WRNO	6050 BBC
6025 RBudapest	6195 CBC	6055 RPrague Inter-Prgm
6030 AFRTS	6200 RMoscow	6065 WYFR
6035 VOA		6080 VOA
6040 VOA	<u>0530-0600</u>	RBI
6055 RFI	5960 DW	6095 VOA
6090 RHavana	5975 BBC	6125 VOA
6100 RHavana	5980 RMoscow	6130 CHNX
6110 RBudapest	5995 VOA	6135 RPolonia
6120 BBC	6005 BBC	6140 RCI
6130 RMoscow	6015 VoNicaragua	6150 BBC EG by Radio
6135 Swiss RI	6030 AFRTS	6155 RAustria Int'l
6140 RHavana	6035 VOA	6175 BBC
6155 RBucharest	6040 VOA	6180 BBC
6175 RFI	6055 Spanish For. R.	6195 BBC EG by Radio
BBC	6090 RHavana	6200 RMoscow
6180 BBC	6100 RHavana	
6185 WRNO	6120 DW	<u>0700-0730</u>
6195 CBC	6130 DW	5960 WYFR
	6165 RNederland	5975 BBC
<u>0430-0500</u>	6175 BBC	5980 RMoscow
5975 BBC	6180 BBC	5985 VOFC/WYFR
5995 VOA	6185 WRNO	5995 VOA
6000 Austria Int'l	6195 CBC	6010 BBC
RMoscow	6200 RMoscow	RBI
6005 BBC		6035 VOA
6015 VoNicaragua	<u>0600-0630</u>	6040 VOA
6030 AFRTS	5960 WYFR	6050 BBC
6035 VOA	5975 BBC	6060 VOA
6040 VOA	5980 RMoscow	6065 WYFR
6055 RFI	5995 VOA	6080 VOA
6090 RHavana	6010 BBC	RBI
6100 RHavana	6015 WYFR	6095 VOA
6120 BBC	6030 AFRTS	6125 VOA
6130 RMoscow	6035 VOA	6130 HCJB
6140 RHavana	6040 VOA	6160 WYFR
6155 Austria Int'l	6050 BBC	6175 BBC
6175 BBC	6065 WYFR	6195 BBC
RFI	6080 VOA	
6185 WRNO	6095 VOA	
6195 CBC	6125 VOA	
6200 RMoscow	6140 RCI	
	6165 RNederland	
<u>0500-0530</u>	6175 BBC	
5960 DW	6180 BBC	
5975 BBC	6185 Vatican R.	
5980 RMoscow	6195 CBC	
5995 VOA	6200 RMoscow	
6005 BBC		
6015 VoNicaragua	<u>0630-0700</u>	
6030 AFRTS	5960 WYFR	
6035 VOA	5975 BBC	
6040 VOA	5980 RMoscow	
6055 Spanish For.R.	5995 VOA	

We'll pick up at 0730 in our next installment of this fine bandscan during our next UD. Tnx again to Kraig for his fine work.

Happy new year to all of you and my best for the finest DXing/SWling in the year to come. Some fine material ahead, including the continuation of this excellent bandscan. Hope to see your reports in the mail soon.

Best 73--TPA



LOG REPORT

section A

2000 to 4800 kHz

Editor: Mike Harris, P.O. Box 260, Grove City, OH 43123

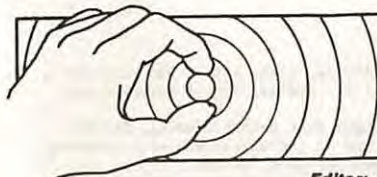
Welcome.....

- 2390 MEXICO. R. Huayacotla. 2209-0030. YL in SS lang. OM w/SS pop mx(O'Brien 17/11)(Dickson 5/11)(Rigas 29/11)
- 2850 N. Korea. KCBS. 1147. KK. Opera. OM w/impassioned talk to 1200, then TP's, ID and possible news(Thunberg 20/11)—nice Bob!!
- 3015 N. Korea. KCBS. 1523. KK. Revolutionary patriotic music, OM mentioning S. Korean President...(Sharpe 18/11)
- 3205 Brasil. R. Ribeirao Preto. 0005-0015. PT. LA pops, possible commercials, & vocals(O'Brien 25/11)
- 3222 Togo. R. Kara. 2220. FR. Fair w/ "Dire Straits" album mx & other rock tunes. (Florian 11/11)(Harris 13/12)
- 3250 Honduras. Luz Y Vida. 0350. EE. Don Moore w/SO anst, preceded by blood & guts religious programs(D'Angelo 11/11)
- 3260 Ecuador. LV del Rio Carrizal. 0315. SS. Lively instrumental mx to ID @ 0324. (D'Angelo 8/11)
- 3285 Belize. RB. 0235. EE. Local programming, election results(Dickson 8/11)(Harris 10/12)
- 3295 Southwest Africa. R. SWA. 0225. EE. Non-stop EZL mx(Dickson 24/11)(Harris 16/12)
- 3300 Guatemala. RC. 0615. SS. EZL mx, nx pgm, ID & closing ansts over "O Come All Ye Faithful"(Alexander 29/11)(Dickson 9/11)
- 3316 Ecuador. R. Pastaza. 0315. SP. OM host in SS w/several ad's and some nice mx (Nikolich 30/11), S/O theme from "Exodus" @ 0404(Paszkiwicz 14/11)
3325. Brasil. R. Liberal. 0351. PT. Fair w/ EZL mx(Florian 21/11)
- Guatemala. R. Maya de Barillas. 0315. SS. Clear ID followed by LA pops(Dickson 23/11)
- 3329t Peru. Ondas del Huallaga. 1037. SS. Andes mx, Birthday greetings, no ID heard(Allen 4/12)
- 3330t Rwanda. RDF Rwandaise. 0347. FF. Talk by M&F, vocals. ments of Rwanda, under CHU. (Paszkiwicz 25/11)
- 3360 Guatemala. LV de Nahuala. 0045. SS. Local mx, ID by OM and then into religious talk at 0100(Prath 5/12)(Paszkiwicz 25/11)
- 3380 Guatemala. R. Chortis,Jocotan. 0120. SS. Lively Guat. mx, several ID's(Dickson 24/11)
- 3385 French Guiana. RFO Guayano. 0000. FF. YL w/presumed nx at 0100, ute QRM(O'Brien 19/11)
- t Papua New Guinea. East New Britain. 1256. Pidgin. Pacific-style singing & some talk in presumed pidgin.(O'Brien 23/11)—will list this as TENT as no ID mentioned, ad.
- 3725v Clandestine. R. Venceremos. 0035. SS. Martial mx, tlk by OM about success of the rebels, etc(Dickson 1/12)(O'Brien 17/11)
- 3900t China. Hulun Bei'er BS. 0859. CH. Folk mx, theme mx, fast ID by YL(Park 19/10)
- 3925 India. AIR North HS, Delhi. 1608. EE. Live beat of Ghandi speech at UN(Park 24/10)
- Japan. NSB. 0830. JP/EE. NSB carrying RCI/CBC programme "Canada This Week"(Park 19/10)
- 3930 Trankei. Capital Radio. 0315. EE. Rock mx, usual DJ chatter(D'Angelo 16/11) (Florian 21/11)
- 3958 Falkland Islands. FIBS. 0503. EE. "Falklands Calling" programme from the HFBS presents live mx from U2. "God Save The Queen" at S/O(Paszkiwicz 30/11)
- **3995 USSR(Asian). Khabarovskoe Radio. 1446. RR. Relay of M2 prgm w/lite classical mx & some pops. M2 IS at 1500, then into nx.(Palmer 8/11)—nice!!
- West Germany. DW. 0540. GG. OM ancr w/talk, rock tunes at various times, etc. (Trotto 23/11 & White 14/11)
- 3999t Greenland. Grønlands Radio. 0027. Very weak. Apparently audible for only 10-15 minutes either side of the grey-line passage in ones area, possible inuit dialect w/talk. (Palmer 26/11)(Rigas 20/11)
- 4020 China. R. Beijing. 1425. Almost inaudible //4620 to E. Asia(Palmer 7/11)
- 4330 China. Haixia 1. 1355. CH. Pgm of Chinese traditional mx, time pips at 1400, then YL reading presumed nx.(Palmer 7/11)
- 4607.3 Indonesia. RRI Serui. 1358. IN. OM talk and RRI ID, into EZL mx w/ some country mx. (Allen 29/11) Tent @ 1419 (Palmer 7/11)
- 4620 China. R. Beijing. 1425. KK. Political talk in a very business-like manner and harsh, thought at first it was N. Korea, mx at 1430 //4020, 5975. (Palmer 7/11)
- 4725 Burma. BBS Rangoon. 1540. Burmese. Talks and local style mx w/flute(Schulze 2/11)
- 4734 Mozambique. RM. 0302. PT. NX after clear ID by OM(Nikolich 30/11)Soul & Rock tunes to NX at S/O(Paszkiwicz 26/11)& (Florian 22/11)
- 4760 Liberia. ELWA. 2132. EE. US produced inspirational prgm w/CA address, VOA nx then Iberian nx by OM. Poor. (Dillon 6/11)

continued.....

- 4762 Peru. R. Inca. 2320. SS. LA vocals, ads and echo effect's(Florian 29/11)
 4770 Cuba. R. Moskov. 0625. RR. Folk mx and IS.(Nagel 30/11)
 4775 Peru. R. Tarma. 0310. SS. Lively LA mx w/OM ancr.(Dickson 17/11)
 4783 Mali. RTV Mali. 2228. FF. Nx & Mx w/frequent ID's, talk on cinema(Hill 15/10)
 4785 Tanzania. R.T. 0300. SH. Koran recitations, choir mx, ID, QRM de Venezuela (Paszkievicz 29/11)
 4790 Peru. R. Atlantida. 0410. SS. Back on this freq after being reported on 4804. Lots of enjoyable local music, talk and ID in SS and S/O w/ possible anthem at 0458. (Gavaras 1/12)(Forth 30/11) & (Allen 1/12)
 *4796.5 Bolivia. R. Nueva America. 1028. SS. OM and YL w/TC's, ads, mentions of La Paz, and finally a clear ID "Desde Bolivia, Radio Nueva America" at 1033, then into fast paced vocals(Nikolich 30/11)
 4800 Lesotho. RL. 2153. Vern. Talk by OM ancr, S/O anmts(Florian 29/11)
 4804 Peru. R. Atlantida. 1014. SS. Campo mx, "Palabra de Dios" @ 1038, echo effects and canned ID's. (Allen 15/11)
 4805 Sao Tome. RN. 0718. PT. Vocals, several commercials w/gong & bird chirps, RN ID's, & ballads (Paszkievicz 30/11)
 4810 Galapagos. LV de Galapagos. 0202. SS. NX, anmts, ID & S/O, RTTY QRM (Paszkievicz 18/11) (Jordan 14/11)
 4834.8 Mali. RTV Malien. 1850. EE. Football match commentary. This EE programme is only on Sundays, @ 1940 into vern, 2015 in FF //4783. (Schulze 1/11)(Allen 18/11)
 4835 Guatemala. R. Tezulutlan. 0120. SS. Pgm of Marimbas mx, music selections mixed w/ spot ID's(Jordan 19/11)(Dickson 27/11)
Sarawak(East Malaysia). R. Malaysia, Kuching. 1445. Malay. Malay pop vocals, live phone calls w/requests. (Sharpe 30/11)
 4845 Columbia. R. Bucaramanga. 0230. SS. Variety of mx, ID after each song(Prath 29/11)
 † Mauritania. RN. AA. 2304. Mx similar to Moroccan, then OM w/anmt in FF(Palmer 21/11)
 4850 Cameroon. R. Yaounde. 2235. FF. OM w/ mx w/ some tribal sounding stuff, at 2258 5 min's of local mx in EE then repeat in FF(Palmer 8/11)
 4853 Yemen. R. San'a. 0356. AA. Vocals by M vocalist(recitations—ed), brief tlk by OM. (Florian 15/11)
 4865 Columbia. LV de Cinaruce. 0105. SS. Cuban flavoured mx, TC's (Dickson 3/11)
 4870t Benin. ORT de Benin, Cotonou. 2240. Drama in FF, 2259 into Vern, FF S/O anmts believe Cotonou mentioned just before anthem at 2301 and S/o at 2302(Palmer 21/11)
 4880 Rep. of South Africa. SABC. 0351. Afrikaans. Opening anmt in afrikaans and then into 50's style mx.(Palmer 30/11)
 4885 Brazil. R. Clube do Para. 0256. PT. Kids vocals, ID's, nx and dramatic speech (Paszkievicz 11/11) @ 0912 (Alexander 10/11)
 4885.3 Peru. R. Huanavelica. 1100. SS. Inert. anthem followed by "elevator" mx, YL w/rapid ID at 1103.(Allen 15/11)

Im leaving for a short holiday in RSA, with a few days in Zimbabwe also, so had to cut out some of the frequently reported stations that usually appear every month. I hope all had a nice Christmas and New Year. When I return, I hope to have some interesting stuff to report, so, until next month, 73's to all & THANKS to all the contributors who make LR-A possible!!
 mude



LOG REPORTS

section B

#900 to 6199 kHz

Editor: Jerry Berg, 38 Eastern Avenue, Lexington, MA 02173

- 4904 CHAD N'Djamena, 2016-2022 11-23, fair sig with talk by man, hilife-like mx, comment at 2020, all FR (Florian-IL).
- 4905 BRAZIL R. Araguaia, 0210-0320 11-30, religious talk in PT, good strong signal, slight QRM from Religio, at times almost equal strength (Dickson).
- 4905 BRAZIL R. Relocio Federal, fair w/flutter 2307 11-29, time sigs, M&W talking (Florian-IL); time armts 0210-0320 11-30, fair-good behind Araguaia (Dickson).
- 4905 CHINA Beijing, in briefly 2201 11-29, nx, fair, fluttery, Brazilian QRM (Florian-IL).
- 4911 ECUADOR Emisora Gran Colombia, 0015 on 12-1, SP soccer match, very good signal, but no ID hrd so make it tentative (O'Brien-NY); 0215 on 11-10, bank ad, sporting event (Ecuador vs. Panama?), beer ad, others, excellent sig (Dickson); 0301-0339* on 11-29, program of romantic mx hosted by OM, frequent ads incl. Quito bank, sometimes IDs as "R. Ecuador," good signal (Allen-OK); off abruptly 0403* 11-10 during baseball (Palmer-WA).
- 4915 BRAZIL R. Anhanguera, hrd 0610 in PT, mixing with Ghana, with ID, ads, local mx (Alexander-PA); 0315 on 11-26, lively mx, ID 0322, exc, best ever signal (Dickson).
- 4915 GHANA Accra, 2238-2303* on 11-6, strong but fading, clas.guitar to 2245, ID, TC, EG nx, relig.mx 2255, vernac.reading, final armts, choral anthem and off immediately (Palmer-WA); fair-good rcprn at 0615-0640 on 11-13, lengthy vernac.talks by man, maybe nx, "R. Ghana" ID 0632, Afro drums, then slow-paced talk; Anhanguera QRM (Jordan).
- 4920 AUSTRALIA ABC-Brisbane, ID, nx 1928 on 11-1, EG natch (Schulze).
- 4920 USSR Yakutsk, 2338-2348 on 11-23, good with erratic fading and geo noise, RS mx to 2344, Korean or Mongol-sounding lang; break 2344, into RS nx 2345, I think MIRO-2 (R. Orbita for UTC+9, 10) (Palmer-WA).
- 4925 BRAZIL Rdfif. Taubate tentative at 0300-0348 11-24, bank ad, lively mx, TCs, talk by M&W, poor-good, lots of weak Brazilians hrd this night (Dickson).
- 4940 USSR Yakutsk, 11-6 at 1545-1600*, fair-strong, classics, no armts at s/off (Palmer-WA).
- 4940 VENEZUELA R. Yaracuy widely hrd. 2315 on 11-9 with variety of LA mx, ID, mentions of many YV cities, good sig (Prath-FL); 2358 on 11-11 with ID, nice LA mx, good sig, mentions of San Felipe (Feeley); 0035-0100 11-12, LA mx, birthday greetings, TC, canned ID, fair sig (Dillon-MD); 0055-0130 on 11-18, talks, ID, armts, ads, promos by gal at 0100, novelty tune, laughs, chatter, pop selections (Jordan); YV style mx, TCs at 0135 on 11-3, ID 0152, excellent sig (Dickson); in SP at 0235 on 11-1 with "Disco Flamingo" (Schulze); 0310 on 11-11 with ID, romantic vocals (incl. two in EG), full ID 0336 as "R. Yaracuy en San Felipe," gave SW fgy, TC, more mx, full s/off armt 0348, NA 0350 to 0352* (D'Angelo-PA).
- 4945 COLOMBIA Caracol Neiva, 0355 on 11-22 with world nx, banco and other ads at 0359, then a host of Bogota nx items; IDs, nx from CA and SA from 0405; fair overall (D'Angelo-PA).
- 4945 S. AFRICA R. RSA at 1854 on 11-3 and -6, IS, Lozi svc, relig.words 1950, EG ID at 1955 s/off (Schulze); hrd from 1900 11-28, African mx, talking at 1930, group singing 1952, final armt, RSA IS to 1956* (JB).
- 4950 SARAWAK Kuching, man with EG nx at 1420 on 11-29, then nx commentary and ID by gal; fair signal (Allen-OK); 1540 on 11-6, good level, mx request prgm anned by man in EG, mostly NAM pops, anncr read names and addresses of those who wrote in requests (Palmer-WA).
- 4955 BRAZIL R. Cultura, EZL mx at 0105 on 11-26, LA mx also, armts, promos, ads, ID at 0200, good strong signal (Dickson).
- 4965 BRAZIL R. Poti, armts, ID, nx, ballads, jingles, instrumentals, "Hello Dolly," 0026-0115 on 11-14 (Paszkiwicz); fairly good and steady 0638 on 1107, campo mx, jazzy group vocals, many TCs, musical ID, usual early AM hype, just like US; full ID 0658 with calls, fgs, powers, in PT, SP and EG (Palmer-WA).
- 4980 VENEZUELA Ecos del Torbes, 0106-0158 11-12, TC, ID, LA pops, PSAs, good sig (Dillon-MD).
- 4985 BRAZIL R. Brasil Central, continuous talk by man 2225 11-9, ID 2232 (Prath-FL); EZL mx 0150 11-5, Br.mx, ads, promos, TCs, nx 0200, good, some QRM at times (Dickson).
- 4991 PERU R. Ancash, 0509* on 11-20, just caught NA prior to s/off, stirring march (O'Brien-NY).
- 4996 PERU R. Andina, hrd at 0120 on 11-23, lively local style mx, ads, TCs, nx, armts NY). by man, moderate wx QRM, fair-good (Dickson); talk at 0228 on 11-18, lively vocals, break at 0250-0255, armts, ID 0300, poor with W&V QRM (Paszkiwicz); 11-30 at 0540 with good signal, OA mx, ID, NA to 0547* (Alexander-PA).
- 5000 CLANDESTINE R. 15 de Septiembre, 0550 on 11-30, usual talk and yelling by M&W, short mx breaks, IDs, 0614*, //5570.4 (Alexander-PA).
- 5003 EQUATORIAL GUINEA Bata, 2140-2155* on 11-24, hilife mx, closing armts 2151, NA to close (Alexander-PA); fair at 2129 on 12-5, nx to 2150, pops, ID, long NA, 2200* (Florian-IL).
- 5010 CAMEROON Garoua, native mx hrd at 2113 on 11-28 (Levison); 2257-2307 fade out on 11-22,

- fair level, typical mix of Afr mx to 2259, FR nx of Africa, amnt, into Koran recitation, dropped below noise at 2307 (Palmer-WA); 0400-0450 11-21, chants, upbeat instr. bridge, ID, relig. segment (Jordan).
- 5010 PERU R. Eco, 0129 on 11-15, ads, TCs, nx, ads, stronger than usual (Dickson). YV? JB.
- 5010 VENEZUELA R. Nacional here, hrd 0245-0358* on 11-1 and -2 (Schulze); man with extended talks 0255 11-18, ID, rapid fire talks, upbeat mx, poor by 0400 (Jordan).
- 5020 NIGER Niamey, 2058 on 11-29, vocals, armts, mentions of Niger, drama, drums and flute at 2150, nx, s/off armts, NA after ID, to 2202* (Paskiewicz); also 11-29, much flute mx, talk, to 2159* with NA (Florlan-IL). Will you folks synchronize your clocks?!
- 5025 BRAZIL R. Jornal Transamazonica, hrd 0655 on 11-17, PT, Brazilian mx, ID, echo armts (Alexander-PA).
- 5025 CUBA R. Rebelde, lively C&W mx 0120 on 11-13, TCs, sporting event, their clock 2 mins. fast (Dickson); mx romantica, 0200 11-2, ID (Schulze).
- 5030 CHINA Beijing hrd 1526-1557 on 11-30, in CH, gal, mx with modern arrangements and western instruments, usual "Zhongyong renmin guangbo diaantai" ID by gal at 1557, then repeated, and off (Sharpe-CA).
- 5030 PERU R. Los Andes, fair on 11-15 at 1010 with man anncr, spot IDs, TCs, armts, slogans between folklorica numbers; big production ID and promo string with M&W anncrs, ads 1030-1035, back to local mx (Jordan).
- 5039 ECUADOR LV del Upano, 0115 on 11-2 with LA mx, ID also as "Radiodifusora de Cultural" (Schulze); 0135 on 11-8 with Andean vocals, TC, armts, NA, theme mx, "Ode to Joy" (Paskiewicz); on 11-27 at 0210, several IDs, HC party-type mx, EZL mx, talk on human rights, excellent during rainstorm; sounded like they were drunk and really having a ball (Dickson); continuous talk by man 0230-0425 on 12-1, several IDs, on late this night (Alexander-PA).
- 5039 SUDAN Tentatively Omdurman, Koran, flute interludes, flutter fading, mx, possible mention of Omdurman, 0408-0432 on 11-25 (Paskiewicz).
- 5040 CHINA Fujian PBS, 0828 on 11-25, fair level, erratic fading, CH opera, short amnt at 0858, more mx; TC 0900, ID by man, nx in CH (seemed a relay of CPBS-) (Palmer-WA).
- 5043 ANGOLA Tentatively ER de Benguela at 2145-2159 on 11-29, poor with MoR mx, "Those Were the Days," native songs, talk by man, tent. ID at 2155 (Florlan-IL).
- 5045 BRAZIL R. Cultura do Para, opera 0227 11-15, several nice IDs; s/off armts over "2001", NA 0255, to 0300*, poor signal (D'Angelo-PA); EZL Br.x 0248 11-28, promo, NA to 0304*, good sig, some wx-related QRN (Dickson).
- 5047 TOGO Lome, strong at 2305 on 11-6, very weakly modulated, however; amnt in FR, into EZL mx, incl. "Are You Sincere;" often hrd during afternoons, but easily missed while tuning across the bands (Palmer-WA); FR talk by man, possibly nx, 0620 on 11-12, "Ici Lome" ID 0628, clas.mx, jazz, fair-poor signal (Trotto-FL).
- 5050 ECUADOR R. Jesus del Gran Poder, relig. talk by man at 1020 11-3, rosary, fair till start of fade at 1100 (Hill-MA); rosary and prayer reading 1040 11-15, brief choral hymns, religious talk, flute solos, full ID 1110 (Jordan).
- 5055 COSTA RICA TIFC, 0555 on 11-28, religious programming, s/off with closing armts and NA to 0605* (Alexander-PA).
- 5055 FRENCH GUIANA Cayenne, 0940 12-1, FR talk by M&W, EZL mx, //6170 (Alexander-PA).
- 5055 SWAZILAND TWR, *0357 11-29, IS, ID, relig. prgmng, weak under TIFC (Alexander-PA).
- 5063 ECUADOR R. Nacional Progreso, Andean vocals, IDs, "Progreso de Loja, musica tropical," TC, ballads, theme mx with ads (Paskiewicz); 0350 presumed tho no ID as such, weak with ute GRM, SP pops, HC mx, s/off 0402* with NA (Alexander-PA, 11-29 (Alexander-PA)).
- 5062 ANGOLA Tentatively ER do Huambo, 0505 11-24, weak, hilife mx, no ID (Alexander-PA).
- 5095 COLOMBIA R. Sutatensa, 0100 on 11-12, sombre talks, interviews, fair sig (Jordan).
- 5125 CHINA Beijing, weak at 1417 on 11-8, CH recitation, short theme 1430, more CH (Palmer-WA).
- 5200 PERU R. Imagen, talk, romantic ballads, incl. SP version of "Tell Laura"; no ID, so make it tentative, 0300 on 11-30 (Nikolich-IL).
- 5451 PERU R. Vision, peppy mx, man DJ at 0322 11-30, gone at 0332 check;s/off? (Nikolich-IL).
- 5570 CLANDESTINE R. 15 de Septiembre, shouting by gal at 0400 11-28, machine guns, "IV de Libertad," sound effects; and 2335-2338* 11-29, talk, ID, chorus, anthem (Paskiewicz).
- 5885 CLANDESTINE Echo of the Pases ("Minjung-ui Me-ari") in Korean, first hrd 10-3 *1055 past 1130, s/on amnt 1100, says broadcasts from Seoul but actually N.Korean; nx, pre-war folk mx, rough copy of SK broadcasting system (Harms-MD, who speaks Korean).
- 5885 ISRAEL KI, EG nx 2230 12-3, ex-5915, and //9435, 7410, fair signal (Zilmer).
- 5895 BELGIUM BRT, 2200 11-25 with fqy amnt and schedule, "Brussels Calling," poor overall (Zilmer); EG at 2210 11-9, cultural talk, QRN (Prath-FL).
- 5900 USSR RM WS from Petro-Kamch, EG poor at 1806 11-30, world nx, "Rx and Vx," //5920, 5950 (Park-HI); R. Kiev prgm in EG 0034 11-27, fair with nx (Nagel-PA).
- 5905 BELGIUM BRT, 2200 on 12-4, EG "Brussels Calling," poor signal, //5895 (Zilmer).
- 5905 USSR R. Vilnius prgm hrd *2300-2320* on 11-28, EG ID, M&W anncr with nx, talk on Geneva, SDI, China, cultural exchanges; fair sig; also R/S Rodina at *2330-0030* 11-25, ID in RS, possible nx, commentary, folk and novelty vocals, orchestra nx after 0000, fair sig; and R. Kiev prgm *0030-0057* 11-26, IS, EG ID, nx prgm, press review, sports nx, fair signal (Jordan); R. Kiev with EG cntry on arms meeting 0036 11-9 (Levison-PA); 0040 11-6 with "Ukraine Today," excellent signal (Dickson); 0045-0100 11-7, "Ukraine Today," talks, ID, nx, I think into RP&P in PT (Dillon-MD).

- 5915 ISRAEL KI, *0100-0125* on 11-13, EG, domestic nx, then Israeli folk mx, //7410 (good), 9435 (not hrd) (Jordan).
- 5915 USSR RM hrd 0000 11-30 in Nam Svc briefly during KI xmttr problem, barely audible when KI on (Prath-FL); 0000-0020, IS, ID, world and Sov nx, fair overall on 11-26 (Jordan); nx and cmtry 0015 11-6, good with slight KI QRM, //6000, 7115, etc (Dickson); 0525 on 11-30 in WS with "Sov Way of Life," ID, nx summary, mx, good sig (Trotto-FL).
- 5930 CZECHOSLOVAKIA Prague, 0045 on 11-25, gal in Slavic language interviewing a child, some ute QRM (O'Brien-NY); not too clear at 0140-0200 on 11-23, gal sang three numbers, then instrumental mx (Bonnet-IN); 0300 in EG with nx, cmtry, local quality 11-8 (Dickson).
- 5935 USSR RP&P, end of EG nx 1638 12-3, talk on US espionage act, poor sig (Park-HI).
- 5945 UZBEK SSR R. Tashkent, EG nx 1200 on 11-5, ID, political talk by gal, fair, //9600 (Hall-MA); EG cmtry on summit meeting, 1345 on 11-23, poor, //5985 (Zilmer).
- 5950 FRANCE Paris, 0045 in SP, 11-25 (O'Brien-NY). Montisnery?
- 5955 BRAZIL R. Gazeta, 0740-0800 12-1, Br.ballads, ammts, several IDs (Alexander-PA).
- 5960 CANADA RCI, 0145 on 11-1, item on pop artist Ian Thomas (O'Brien-NY); 0300 on 11-14, wx, Atlantic yacht race, CBC nx, sports (Bonnet-IN).
- 5965 NIGERIA Plateau Radio, poor in EG at 2102 on 11-30, Lagos nx relay (Rigas-IL).
- 5970 CUBA RM via Havana, EG cmtry at 0130 on 12-1, ID by man, very distorted, difficult to understand due to poor modulation, but signal strength excellent (Trotto-FL).
- 5975 CHINA Beijing, hrd 1425 on 11-7, good level, better than //s 4020, 4620, but RM on 5980 was really hammering away (Palmer-WA).
- 5975 COLOMBIA R. Macarena, ID and TC at 1023 on 11-30, into prgm called "Musica de Colombia," a real joy to listen to this AM (Nikolich-IL).
- 5975 ENGLAND BBC WS, hrd 0159-0210 on 11-13, EG, TC, ID, world nx, "Review of the British Press," fair signal (Dillon-MD).
- 5980 CUBA Havana, EG nx about Cuba by gal anncr at 0120 on 12-1, ID by man, good signal, as always (Trotto-FL).
- 5980 USSR RM Nam Svc via Riazan (per UHN), EG 0045 with gal discussing ignorance of Americans, "Tonight" prgm, splash on both sides, //7115 (fair); vy poor 11-6 (Dillon-MD).
- 5985 BOLIVIA R. San Jose, 1033 on 11-15 with somber instrumental mx, some livelier vocals, ID (Forth).
- 5985 UZBEK SSR R. Tashkent, EG ID 1200 on 11-11, world and Uzbek nx, cmtry on US role in Afghanistan, life in Uzbekistan, to 1229; weak (Dillon-MD).
- 5990 JAPAN NHK-Tokyo, 0709 on 11-11, fair with deep fading, bad condx, talk about streetcars, radio travelogue at 0715 (Palmer-WA); 1115 11-18, talk on skilled craftsmen needed in the JP economy (Jones); 1512 in EG, political cmtry on Poland, "Asia Now" feature, co-channel QRM from USSR (Sharpe-CA).
- 5996 PERU Tentatively R. Melodia, Andean flutes at 1040 on 12-3, rapid talk by man, very poor under Australian QRM, very tentative (Allen-OK).
- 6000 BRAZIL R. Guaiba, 0847 on 11-16 in PT, poor with ID, talk by man, ex-5965 (Rigas-IL).
- 6000 CUBA RM via Havana, EG 0027-0045 11-7, prgm about Am.Indians, ID, Johnny Cash, Soviet treatment of minorities, fair sig (Dillon-MD); EG 0245 on 11-9, the usual RM prgmng, excellent signal (Dickson).
- 6006 COSTA RICA R. Relej, TCs 2320 on 11-9, romantic LA mx, nx at 2330, local ads (Dickson).
- 6010 BRAZIL R. Inconfidencia, 0655 11-23 with Brazilian pops, accordian mx, ID, ammts, listened till 0705 (Alexander-PA).
- 6014.5 PARAGUAY Emisoras Paraguay, straight vocals at 0913 on 11-7, almost operatic, man anncr gave frequent talks; ID at 0919, weak (Allen-OK).
- 6015 NICARAGUA Voice of Nicaragua, EG ID at 0100 on 11-30, revolutionary nx, anti-US propaganda, poor-fair signal (Purdue-MN); 0200 on 11-6, EG talk about mercenary atrocities, "Nicaragua Today," into SP at 0218, excellent sig (Dickson).
- 6015 VATICAN Vatican Radio, EG 0051, excerpts from Pope's speech at Synod, 11-25 (O'Brien-NY).
- 6020 NETH.ANTILLES RN-Antigua, EG "Newslines" at 1048 on 12-5, "RRMN," RM QRM (Park-HI).
- 6020 USSR RM Nam Svc via Kiev (per UHN), anti-SDI cmtry 0115 11-7, ID, fair (Dillon-MD).
- 6020 USSR R. Afghanistan relay via USSR now here armd 1800-1930, some local languages, some CM, some EG, anncng various //s but only hrd here (Schulze).
- 6025 NIGERIA Emugu, hrd at 2111 in EG on 11-30, relay of Lagos nx (Rigas-IL).
- 6030 BRAZIL R. Globo, in PT at 0838 on 11-16, strongest Brazilian on 49 mb except for R. Nacional on 6180; ex-6035 (Rigas-IL).
- 6030 USA AFPS-Bethany, clear signal at 0230-0300 on 12-5, M&W anncr, substitute for regular prgm, ban on cigarette ads, CBS nx, sports (Bonnet-IN).
- 6035 WEST GERMANY DW, end of EG program to Asia at 0245, anncr giving times, fqys, good (Prath-FI).
- 6035 LIBERIA VOA-Monrovia, *0300 11-13 with several different versions of "Yankee Doodle," EG, ID, into world nx (Palmer-WA).
- 6040 BRAZIL R. Clube Paranaense, lots of PT talk by two men at 0705 on 12-2, vocal mx, ad for a business in Curitiba, ID, fair tho usually poor (Allen-OK); 0829 on 11-16, fair with full AM, SW ID; ex-6045 (Rigas-IL).
- 6055 CZECHOSLOVAKIA Prague, weak at 0745 11-28 with nx, cmtry, ID, pops (Alexander-PA).
- 6055 FRENCH GUIANA RPI-Montisnery, EG concertina mx, nx, 12-1 (Levison). Time?
- 6060 AUSTRALIA RA, good rcprn, vocals, world nx, strong signal, 1244-1330 on 11-26 (Bonnet-IN).
- 6065 USA VoFC via WYFR-Okeechobee, good rcprn at 0347 on 11-29, CH and EG, talk about putting air in tires, mx, CH vocals, M&W anncrs alternating (Bonnet-IN).

- 6070 LIBERIA ELWA, hrd at 0830 on 12-8, EG religious prgm by Afro evangelists, much from Matthew; never hrd this late before (Nikolich-IL).
- 6075 PORTUGAL Lisbon, in PT at 0200 on 12-1, ID, then nx read by a gal, fair signal but with DW QRM (Trotto-FL).
- 6080 CANADA CKFX-Vancouver, hrd at 0009 on 11-11, fair level, fading, ID as "WX 1130" (Relays CKWX MW), Q&W format, gal anncr (Palmer-WA).
- 6080 E.GERMANY RBI, in EG at 0056 s/off on 11-10 with ID and fgy (Feeley).
- 6090 LUXEMBOURG R. Luxembourg, hrd with rock mx by Queen at 0027 11-6, man DJ with "Weekend Magazine" ad, canned ID; Lisbon-6095 QRM began at 0300; poor overall (Dillon-MD); hrd 0048 on 11-21, EG, Q&W format, heavy QRM from Havana s/on at 0052 (Feeley).
- 6095 ECUADOR HCJB, EG "DXFL" at 0648 on 11-10, poor with QRM from 6090 (Park-HI).
- 6095 PORTUGAL Lisbon, 0045-0101* on 12-3, EG talk on local festivals, Euro sports, local mx, NA to 0101*; poor, and //9680 not heard (Jordan).
- 6100 USA New WHRI, World Harvest Radio, Noblesville, IN hrd testing 0745 12-8: "This is World Harvest R, the intl bcng svc of Lesca B/Cing Corp. WHRI bcsts from Noblesville, IN in the USA." And: "World Harvest R is currently conducting tests prior to beginning regular bcsts on Xmas Day. World Harvest R welcomes xrpts from lstrs during the equipm and prgm testing period. Rcpn xrpts should be sent to World Harvest R, P.O. Box 50250, Indianapolis, IN 46250, USA."
- 6100 VENEZUELA YVTO, time at 0645 11-2, ID each minute by man, fair sig (Hill-MA).
- 6110 MALTA IERA Radio, EG "The Bible Alive" prgm 2017 11-16, ID as "IERA R. NAM," requested ltrs to usual Stn F Canada address; poor overall (D'Angelo-PA); R. Mediterranean, EG, flutes at *2230 11-26, ID, fgy, into nx, poor in heavy QRM (Jordan); R. Mediterranean hrd at 2235 on 11-21, EG, soft rock "Knock Three Times," nx (Feeley).
- 6115 PERU R. Union, hrd 0805-0830 on 11-10 with OA mx, many IDs as "Union, la Radio" (Alexander-PA).
- 6120 BRAZIL R. Globo, 0819 11-16 in PT, fair with ID, ments. of S.P., ex-6125 (Rigas-IL); 0830 on 11-10 with ada, many IDs, phone talk, Brazilian mx (Alexander-PA).
- 6120 CANADA BBC WS relay, ID at 0200, world nx, "Review of the British Press," fair sig with het, on 11-6 (Dillon-MD).
- 6121 NICARAGUA R. Zinica, hrd 1212 on 11-23, LA pops, man anncr with TCs, IDs and promos, ". . . voz amiga, R. Zinica," excellent sig (Allen-OK); 1250 on 11-21, M&W with the nx, ID 1253, many mentions of Nicaragua; good, but always with AC hum (Trotto-FL); religious prgm in EG at 1315 on 11-24, birthday greetings, bible reading (Prath-FL).
- 6125 E.GERMANY RBI in EG to Africa at 0305 on 12-4, nx, poor signal (Nagel-PA).
- 6130 USSR RM NAM Svc via Novosibirsk (per UHN), world nx 0102 on 11-7, ID, propaganda, co-channel QRM from VOA bcst to the Americas; //6020 (fair) (Dillon-MD).
- 6145 INDIA AIR GOS, 1740 in maybe AR or Parsi, folk mx, organ mx and off; AR ID, into Koran, //9912; fair with jammer, 11-30 (Park-HI).
- 6155 LIBYA R. Jamahiriyah, 0322 on 11-30, AR prgm with local mx, off at 0330 with ID and long anthem (Nikolich-IL).
- 6155 USA WHRI, World Harvest Radio, 0348-0424 on 12-7 with test tone series and same smts noted under 6100 above; regular bcsts to begin Xmas day. Very good signal, excellent modulation (Gavarras). In later tests, mentioned special QSL for pre-Xmas xrpts, plus another special QSL for first day (Xmas) xrpts. JB. Hrd testing 0416 on 12-5, same format as rptd above (Rigas-IL).
- 6160 COSTA RICA R. Impacto, hrd with local mx at 0128 on 11-29 (Levison); hrd 0140-0200 on 11-15, ID, "Impacto de la Hora," "La musica de Impacto," pops and LA mx, man DJ, TCs, full ID at 0157, some QRM (Dillon-MD).
- 6165 NETH. ANTILLES RN-Bonaire, EG at 0237 on 11-18 with Tom Meijer's birthday celebrated on "Happy Station" program. BBC-6175 almost inaudible (Park-HI).
- 6170 BRAZIL R. Cultura, Sao Paulo, vocal mx at 0828 on 12-4, man anncr, TCs, phone conversations, Happy Birthday song, ID 0904 (Allen-OK); hrd 0836 on 11-16, poor with brief mention of R. Cultura; ex-6165 (Rigas-IL).
- 6175 ANTIGUA BBC WS relay, hrd 0200-0210 on 11-15, ID, TC, world nx, press review, co-channel QRM from Cairo; fair, with //5975 good (Dillon-MD).
- 6180 BRAZIL R. Nacional da Amazonia, hrd ID at 0858 on 11-21, time pips, full ID at 0900 by man, then nx by gal, good signal (Trotto-FL); many IDs and promos at 0939 on 11-28, telephone interviews, good sig, //11780 (Allen-OK).
- 6180 VENEZUELA R. Turismo, upbeat LA mx at 1215 on 11-28, ID, poor signal (Prath-FL).
- 6190 LESOTHO BBC relay, EG at 1710 on 11-30, "Tx of the African World," Mayak in the background, heavy static (Park-HI).

With 1985 closing and 1986 approaching as I finish this column, it's appropriate to say "thanks" to all of those that support LR-B and the other FRENEX columns. Don't be reluctant to contribute just because you think that your items are "routine" or not of major DX interest. FRENEX is intended to serve hobbyists of all interests, whether DXers or SWLs, so it is important that we have the latest loggings in both areas. Make yourself a New Year's resolution to contribute each month, even if you have only a few items. Take your 1986 calendar and put a note just before the monthly deadline dates to remind you to contribute. Don't worry about using a particular format; I'll know what you mean. Thanks again to our monthly regulars. 73--



LOG REPORT

section C

6200 to 11699 kHz

P.O. BOX 663, OXON HILL, MD 20745

ON THE WAVE:

This month--and I'm at loss to explain why--brought a flood of log reports, not to mention a surprising number of you who submitted to me directly. For lack of space some new logs will remain on the cutting room floor (and no station loggings will be repeated from last month), so please bear with me, and I'll make every effort to squeeze in as many reports as possible.

Here we go...

- 6230NF ECUADOR HCJB 0230 EG, Mailbag ed'tn o/"Happiness Is";p (Park-HI 11/25) 0605 EG, "Musical Mailbag"; xlnt (Allen-OK 11/18) 0629 EG, nx, science pgm //9870 (Alexander-PA 11/23)
- 6250 EQ. GUINEA R.Nac-Malabo 2138-2205* SP, tx, nx, ID, TC, vcls, gong, NA then s/off (Paszkiwicz 11/10)
- 6250 N. KOREA R.Pyong. 1605-1616, KR orch.mx; fr (Palmer-WA 11/6)
- 6322.5 UNID. 1110-1118, OM host o/upbt px o/Lat. mx--ancr w/lots of cattle calls and whoops... sev'l attempts at an ID, but never could pull out the ID. Deep fades on fq by 1118, finally lost in static (Nikolich-IL 11/30)
- 6480 S. KOREA R.Kr 2200 EG, sched, nx (Thunberg-PA 12/5)
- 6493 CHINA R.Bei. 1618-1624 Viet, Sounded like Bei's Political line. CPBS-1 sup.to be here. App'tly freed up xmtr for Frgn Svc use.; fair (Palmer-WA 11/6)
- 6665 CHINA CPBS-1 1624-1628, CH folk mx; fr (Palmer-WA 11/6)
- 6750NF PORTUGAL RPr 0325 EG, mx pgm, ID, NA, OC to 0334*; what are they doing here? (Forth 11/20)
- 6750 CHINA CPBS-1 1140 CH, tx, no mx in 1/2 hr. No ID hrd but did note //6665 (Prath-FL 12/7)
- 6790 CHINA CPBS Taiwan-2 1628-1634 CH, px of CH traditional mx, 1630 sched & nx? (Palmer-WA 11/6)
- 6933 CHINA R.Bei. 2213 SP, tx, ID, brf. CH mx interlude; f (Allen-OK 11/24)
- 6950NF PORTUGAL Rpt 0005-0100 PT/EG, playing "switch-the-digits" again; nx, sched, PT bagpipe mx, NA, EG nx & sports, ancd fq 6095, "Our Choice of Mx" w/PT pops; excit (McLemore-FL 11/20)
- 7080 CHINA R.Bei. 1526-1557 Hindi (or maybe Urdu), wld nx, correspondence reports (?) (Sharpe-CA 11/26)
- 7135 FRANCE RFI 0415 EG, fq's, nx, intvw: G.Schulz (Park-HI 11/20)
- 7165 USSR R.Vilnius 2309 EG, "The Week in Retro."; f (Nagel-PA 12/3)
- 7175 ITALY Radiodue ("R.Two") 0514-0532 IT, tx/betw.2 W w/occ.EZL vocal, 0530 pips, ID then OM w/nx; sio 232 (D'Angelo-PA 11/24)
- 7183 USA WA3NAN Goddard Space Stn (LSB) 2300 EG, ctnous voice cmncation o/Atlantis Shuttle launch & NASA base, //14296 (USB), (Zilmer 11/26)
- 7245T ANGOLA R.Nac. 0740 PT, psbly then w/hilife mx & OM tx in PT; no ID so presumed them... (Nikolich-IL 12/8)
- 7275 TADZHIK SSR R.Dushanbe FS 1757 Farsi?/Dari, S.Asian mx & ann.; aminous band mx; xylo IS, ID & nx; poor w/QRM,N (Park-HI 11/30)
- 7290 USSR RMNAS 0000-0005 EG, nx abt USSR in the yr 2000, tx: "Star Wars" summit meeting (Purdue-MN 11/11) 0125-0140 EG, Praise for USSR econ, Unveiling o/Lenin monum, Views of Brit. visitors to Soviet Union; f (Dillon-MD 11/6)
- 7295 CHINA RBFS 1130 JP, folk mx, nx, //7480; fr (Park-HI 12/8)
- 7305 USSR RM WS Novosibirsk? 1648 EG, Arts mailbag show, "Guest Speaker", //7315; poor (Park-HI 11/13)
- 7325 UNITED KINGDOM BBCWS 0100-0200 EG, wld nx summary, Play of the Week: "The Secret Agent" Pt. 1; f (Dillon-MD 11/24)
- 7345 CZECH. R.Pr. 0115 EG, tx: Nrmbg trials; mx; xlnt (Dickson 11/20)

- 7355 USA-ALASKA KNLS 1813-1833 EG, "Swingin' Years" px, ID 1830, fol'd by rel pgm "Let's Talk"; fr (Palmer-WA 11/20)
- 7365 USA KGEI 0232-0249 RS, rel.pgm; sio 544 (Palmer-WA 11/30)
- 7375 CHINA R.Bei. 2240-2250 SP, CH daily life (Palmer-WA 11/5)
- 7380NF CLAND. LV del CID 0143 SP, "Cuba para los Cubanos" pgm, ID hrd (Rigas-IL 11/28) R.Camilo Cienfuegos 0257-0305 SP, drama, IS & ID, cmtry: CB troops in Angola; vg (McLemore-FL 12/1)
- 7410 ISRAEL KI 2230-2300 EG, nx,cmtry,DX corner (Purdue-MN 11/10)
- 9022 IRAN VoIslam.Rep. 0443-0450 lang?, long tx (O'Brien-NY 11/27)
- 9350 N. KOREA R.Pyo. 1840-1849* SP, ID, usu/politics (Palmer-WA 11/12)
- 9360 SPAIN REE 0525 EG, ftr on city o/Segovia;f (O'Brien-NY 11/20)
- 9465 PAKISTAN R.Pk. 1648-1712 EG, PK mx, ID, 1700 nx, //11810, sio 242 (11/24) 1704-1725 EG, nx & sports--plenty o/emphasis on PK events, ID, PK mx; sio 151, very wk (D'Angelo-PA 11/10)
- 9475 EGYPT R.C. 2133-2200 AR, AR mx, ID; f (Dillon-MD 11/17)
- 9480 ALBANIA R.Tirana 1458-1503 FR (Palmer-WA 11/6) 1640-1655 EG (Jordan 11/16) *1829-1854 EG, "lots of exciting info about brick factories!!" (editorial opinion, not necessarily that of your editor --ed.) (D'Angelo-PA 11/10) 2202-2227 EG (Dillon-MD 11/17, also Prath-FL 11/24)
- 9510 SEYCHELLES Far East Bdc. Assn. *1730-1735 Afr.lang?, familiar IS caught my ear, ID, tx (Palmer-WA 11/7)
- 9510 USSR R.Peace & Progress 1619-1700* CH, political tx & lite mx, played RP&P IS at xmsn end (Palmer-WA 11/7)
- 9515 MALAYSIA RMal. 1540-1600 Malay, ML pop voc, OM praying/recit. the Koran, rel tx (Sharpe-CA 11/28)
- 9520 NEW GUINEA NBC Port Monesby 0740-0806 EG, US pop, Catholic mission choir mx, o806 sig.abtly gone (Sharpe-CA 11/25) 0800 EG/Pidgin, nx in EG fol'd by PDG tx, lost in noise around 0815 (Allen-OK 11/18)
- 9525 NORWAY R.No. 1916-1921 EG, tx abt NR; p-f (Purdue-MN 11/17)
- 9525 USA R.Marti 0215-0235 SP, SP & Am pop, IDs;g (Cobb-ME 11/11)
- 9545 BRAZIL R.Universo 2310-2320 PT, orch.mx, ID (Palmer-WA 11/9)
- 9555 W. GERMANY R.Liberty 0145 RS nx, ID; jammed (Tindall-NC 11/20)
- 9560 ETHIOPIA VORE 1427-1540+ AR/EG, Native mx, YL ID in EG 1500 into nx hdlines. Full nx rep't (Afr) 1530;f (Allen-OK 11/29)
- 9565 SYRIA R.Damascus 1950 FR/EG, 2005 ID & fq's in EG, nx & "Press Review"; fr (Allen-OK 11/21) 2023 EG, IS, nx, AR mx (Feeley 11/29) 2110 EG, nx, EZL instr. mx, Arab Profile; fr sig. (11/24) (no name w/last rep't... --ed.)
- 9565 PORTUGAL RPT. 0232-0250 PT, PT mx & the usu.bland stuff to Namer (Palmer-WA 11/9)
- 9590 NETHERLANDS RN 0245-0324* EG (Bonnet-IN 12/6, Dickson, Park)
- 9595T ETHIOPIA VORE "VoNamibia" 1945-2001* lang, Afr. chorus voc's, rapid tx by M betw.seg's; patriotic martial mx at 1958 mx'd w/tx, poss. ID anmts by M; v.p. (Jordan 11/29)
- 9595 JAPAN NSB 2033 JP, jazz & reggae, ID, fq's,nx;g (Park-HI 12/5)
- 9595 UNITED ARAB EMR. VoUAE 1745 AR, Mid-Ea.mx;f (O'Brien-NY 11/17)
- 9600NF PORTUGAL R.Renascentia 0010-0040 PT, "Imaculate Mary" IS on chimes, ID, into tx, lost to Moscow (Paszkievicz 11/25) PT ID 0015 incl. "Emisora Catolica Portuguesa," 0021 nx (Tindall-NC 11/20, also Trotto-FL 11/10)
- 9600 UZBEKISTAN SSR R.Tashkent *1200-1228* EG, fqcy sched, into nx w/Soviet observance of 68th aniv. of Bolshevik Rev, w/lengthy historical revw mx'd w/ocsl dramatic mx, also topical nx items & local mx (Jordan 11/7; also Hill-MA 11/5, Prath-FL 11/10)
- 9600.2 CLAND. R.SPLA 1350-1358* AR, loc.mx,tx,closing anmts in EG w/ID as "Radio SPLA, the Voice of the Sudanese Revolutionary Armed Struggle" (Alexander-PA 11/16)
- 9605 CZECH. RPr 1730 EG, nx,current affrs, ftrs, fq & time sched. //15110,5930,11990, sio 232 (Zilmer 11/20)
- 9610 IRAQ R.Baghdad 2220, mx, EG ID, fq anc, s/off;g (Tindall-NC 11/22)
- 9615NF USA WHRI-World Harvest Radio 0156-0243 EG, test series w/seq. of 5 tones (the first was very low, then ascending) repeated 4 times, then ID ann.; xlt sig (McLemore-FL 12/5) 0250-0300* EG, test tones; f (Trotto-FL 12/5)
- 9630 IRAQ Vot Masses 1844-1915 AR, AR mx, nx, ID;f (Dillon-MD 11/11)
- 9630 NETH. ANT. RN 0815-0825* EG, jazz pgm; g (Trotto-FL 11/26)
- 9630 SPAIN REE 2150-2206 SP, nx, pop mx; f (Dillon-MD 11/8) 0006-0010 EG, nx, heavy QRM (Purdue-MN 11/11) 0100-0157 EG, wld nx, SP mx, "Panorama," SP lessons; f (Dillon-MD 11/8, also Levison 11/15)
- 9640 VATICAN STATE VR 1445-1455* EG, Mailbag show;g (Trotto-FL 11/24)
- 9645 VATICAN STATE VR 2001 EG,Pontifical Confr.on Tourism (Nagel-PA 11/11)

- 9650 USA VoA 0340 EG, VoA Jazz Hour, pgm prev. (White-FL 11/26)
- 9655NF AUSTRALIA RA 0805-0810 EG, wld nx, stock exchange; f (Trotto-FL 11/21) 0840 EG, "You Sweet 16," mx (Schulze-FRG 11/10)
- 9675 EGYPT R.Cairo 0310-0329* EG, intvw w/furniture maker, AR mx, chimes 0315, ID, nx, sig.g //9475 (Trotto-FL 11/12)
- 9675 TUNISIA R.Tn. 0630-0710 AR, AR mx til 0705, tx, ID, many tents o/Tunis; (my UNID few mo's back) (Trotto-FL 11/13)
- 9684 TANZANIA R.Tz. 0402-0423 EG(tent.), nx by M; sounded like Afr stn but seems too early to be Tanz. in EG (Paszkiwicz 11/18) 1901 EG, Afr & Mid Ea.nx, ID, more nx, 1917* (Thunberg-PA 11/30)
- 9690 ROMANIA R.Buch. 1300 EG, IS, s/on w/ID, nx, //11940 hd yestdy (Prath-FL 12/1) 1500 EG, fq's sched, nx; sio 333 (Zilmer 11/27)
- 9709 MAURITIUS MBC 1430 FR, piano mx pgm, ID (Thunberg-PA 11/12)
- 9715 N. KOREA R.Pyong. 2330 EG, ID, choral mx, tx: social security for peasants; weak but clear (Hill-MA 11/8)
- 9720 AUSTRALIA RA 2154-2203 EG/CH "Waltzing Matilda" IS, EG & CH s/on ann. then CH pgm prev; f-g (McLemore-FL 12/2)
- 9720 SRI LANKA SLBC 1400 EG, pop mx, //15425 (Hill-MA 11/5)
- 9725 KENYA VOK 1500 EG, disco & rap, ID, nx (Nikolich-IL 12/5)
- 9730 CHINA R.Bei. 1400-1409 EG, IS, ID, nx, sio 353 (D'Angelo-PA 11/24)
- 9750 S. KOREA R.Kr. 1449-1500* EG, tx, ID; gd (Trotto-FL 11/21)
- 9750NF? UNITED KINGDOM? BBC 1517 EG, BBC Concert Hall (100th Aniv. Brahm's 4th Sym.); f-g, //15260, 11775 both xlt. This fq not listed in Nov. London Calling (Tindall-NC 11/24)
- 9770 AUSTRALIA RA 1137 EG, "Soundabout," however RA's 9580, 6060 & 5995 had instead "Australia Tonight" (Park-HI 11/22)
- 9778 DOMINICAN REP. R.Santiago 0105-0205 SP, OM ancw w/pres'd Bball cvrage, many spot IDs, sports updates (Jordan 11/23) 0317-0337 SP, futbol or baseball, ID, ads (Paszkiwicz 10/27)
- 9790 GABON RFI 1720 FR, Nice FR & hilife mx; fr, QSB (Allen-OK 11/28)
- 9800 FR. GUIANA RFI 0315 EG, nx, very strong signal (11/25)
- 9805 EGYPT R.Cairo 1840-1845 IT?, typ. Eg. & AR mx (Palmer-WA 11/8) 2123 EG, AR & Western mx; good (Feeley 11/27) 2222-2243* EG/AR, flute mx, ID, "The Holy Koran and it's Meaning" px, nx headlines, into AR 2241, s/off; f (Dillon-MD 11/8)
- 9805 SYRIA R.Damascus 2126 EG, nx; f (Nagel-PA 11/24)
- 9810 USSR M1RO-1 ("R.Orbita") 0331-0340 RS, trad. and folk mx anc'd in RS; weak, fading, hvly geo noise (Palmer-WA 11/5)
- 9810 USSR R.Peace & Progress 1846-1905 CH, nrly all tx, RP&P IS at 1859; fair to inaudible, jamming, fades (Palmer-WA 11/8)
- 9820 CHINA R.Bei. 1215-1256* EG, worker mngmt in E. Europe, ID, CH archaeology, Asian mx; f (Dillon-MD 11/17) 0012 EG, traffic signs & rest areas for handicapped to be installed (Feeley 11/11) 0015-0025 EG, tx: Lat.Am, then into CH mx & CH arts (Purdue-MN 11/11) 0030 EG, history px: trade fm 1400-pres't in partic. province (Jones 11/22) 0030-0056* EG, cmtry: Geneva tx's; tx: lcl mx composers, CH schools, for.policy; f-g (Jordan 11/13)
- 9855 CHINA Vo Free Taiwan 2100-2113 EG, nx, cmtry, very abrupt end of transmission (Davisson-OH 11/29)
- 9885 SWITZERLAND SRI 1542-1558 EG, Dateline, ID, Swiss SW Merry-go-round w/the 2 Bobs; 353 (D'Angelo-PA 11/23) 1730 AR, IS, OM w/greetings & ID, into pres'd nx; fair (Allen-OK 11/28)
- 9905 GREECE ERT 2245 GK, YL ancw w/GK vocals, //7430; f (Allen 11/24)
- 9925 BELGIUM BRT 0034 EG, DX nx, focus on Denmark, (signal deteriorated at 0038) (Feeley 11/25)
- 9940 CLAND. LV del CID 0335 SP, ID, tx; good (Tindall-NC 11/20)
- 9945NF BANGLADESH RBan. 1658 VNC, int'l & loc.mx, bad modulation of the lang; first day of recp (Schulze-FRG 11/10)
- 9955 TAIWAN Vo Free China 2215 EG, msly unintelligible, asian orch. mx, 2230 Taipei adr given (Tindall-NC 11/22)
- 10040 VIETNAM VoV 1800-1830 EG, spec'l ftr: Rajiv Gandhi's visit, nx, Thanks for Listening & Writing ftr (Sharpe-CA 11/27)
- 10060T VIETNAM VoV Domes.svc--Hanoi-1 1128-1147 VT, tx, orient.mx, fading & weak, //7420, no ID hrd; vp (Dillon-MD 11/16)
- 11585 ISRAEL KI 1800-1815 EG, nx: IS spy activity in US, military budget cuts proposed, headline review; sched (Jordan 11/29)
- 11635 CLAND. LV del CID 1648 SP, "Musica Libre" px ftr'g US heavy metal mx, 1700 ID (Rigas-IL 11/27) 1735 SP, tx: 'contadoras' (Allen-OK 11/28) 1809 SP, rk mx, messy sig (Paszkiwicz 11/30) 1930-1945 SP, EG & SP pops; distorted audio (O'Brien-NY 11/30)
- 11675 KUWAIT RK 1830-1855 EG, US/USSR positions in Geneva (Jordan 11/16)

***Till next, good-day--- pmd



LOG REPORT

section D

11700 and above

Editor: Wallace C. Treibel, 357 N.E. 149 St., Seattle, WA 98165

- 6170C VATICAN CITY VR in EG 2105, xmsn to Africa, ID, off at 2106 (Feeley GA 11/21)
11705nf USA WRNO in EG 2218-2230*, commercial, rock mx, ID, IS, q (Trotto FL 11/30)
11710 ARGENTINA RAE in EG 0145-0201, "Shows & Books", q (Nagel PA 11/27) flute mx, multi-lingual ID 0200, then into PT pgn (Cobb MF 12/5)
11720 CANADA CBC Northern Service in FR 1703, nx (O'Brien NY 12/1)
11720 SEYCHELLES FEBV in lang. 1728, IS, tlk, f (Vadino WA 11/9)
11720 BULGARIA R. Sofia in EG 0100, ID, nx, //6070 (Prath FL 12/6)
11735 NORTH KOREA R. Pyongyang in SP 0000, IS, ID, nx, tlk, f (Zilmer NM 12/4)
11745 BRAZIL Radiobras in EG 0215, tlk, pop mx, exc (Dickson OH 11/20) carnival mx, freq. skeds, req for rpts, off 0250 (White FL 11/26) nx, vocals (Bonnet IN 12/4)
11745 USSR R. Moscow in EG 1300, nx, "Soviet Way of Life", //15475 (Prath FL 11/28)
11760t COOK ISLANDS RCI in lang 0730-0835, pop & soul mx, tlks, p (Allen OK 11/18)
local mx, interview-type tlks, chorus and uke (Jordan PA 11/16)
11760 SWAZILAND TWR in EG 0700, ID, "Through the Bible" (Feeley GA 11/19)
11775 ANTIGUA BBC relay in EG 1556-1615, sports scores, ID, TC, nx, cmtry (Dillon MD)
11775 CANADA BBC relay to N Am in EG 1702-1716, nx, "Reflections" (Palmer WA 11/24)
11785 SWEDEN RSI in SW 1715, nx (Vadino WA 11/10)
11805 TAIWAN WOFC in EG 2130, ID, address, pop mx (Schulze, W. Germany 11/10)
11810 INDIA AIR Delhi in EG 1335, nx, ID, very weak (Hill MA 11/5)
11815 NETHERLAND ANTILLES TWR in EG 1140-1200, nx, vocals, features (Bonnet IN 12/4)
11815 USA R. Marti to Cuba in SP 1638-1649, rock, soul, Cuban mx, ID (Palmer WA 11/9)
11840 POLAND R. Polonia in EG 1235, press review, ID's, Africa beam (Hill MA 10/26)
11850 PHILIPPINES FEBC in EG 1430, nx, religious pgn, f (Zilmer NM 11/24)
11855 DENMARK RD in DN 1725, IS, ID in EG, freqs (Vadino WA 11/10)
11860 USSR R. Kiev in EG 0030, nx on Gorbachev press conf after Geneva (Feeley GA)
11865 UNITED KINGDOM VOA relay in Latvian 1600, in Estonian 1630, in Lithuanian 1700
IS, ID, each segment began with world nx (Palmer WA 11/13, Trotto FL 12/1)
1190C USSR R. Moscow in EG 1230, nx in brief, political tlk (Prath FL 11/10)
11910nf PORTUGAL RP in PT 1915-1945, nx, TC songs, folk mx, xmsn to former colonies in southern Africa, moved from 11915 (Palmer WA 11/8, Vadino WA 11/9)
1194C ROMANIA R. Bucharest in GW 1215-1227, tlks abt commerce, E. Eur. mx, ID, DY pgn, IS 1226 (Dillon MD 11/9) in EG 1310, Eur. svce., tlks, folk mx (Prath FL 11/30)
11945 CANADA RCI in EG 2130-2200, nx, sports, ID, "Spectrum" (Dillon MD, Palmer WA)
11951m CUBA RHC in FR 2110-2132, theme mx, Cuban mx, tlk, strong het RCI (Palmer WA)
11960 CHINA P. Beijing in SP 0000, IS, ID's, nx mostly abt China (Palmer WA 11/12)
1199C CZECHOSLOVAKIA R. Prague in AR 1957, in FR 2040, tlk, disco mx (Palmer WA 11/26)
1199C USSR R. Mayak Vladivostok in RS 2300, Mayak mx, TC, nx (Palmer WA 11/12)
12070 USSR R. Rodina in RS *1400, IS, ID "Covorit Radiostanzia Rodina" (Prath FL 11/30)
12080 ISRAEL Kol Israel in HB? 1705-1718, nx?, ID (Palmer WA 11/12)
12085 SYRIA R. Damascus in EG 2009-2020, symphonic mx, nx, tlk on peace in the Middle East, fluttery sig (Levison PA 11/4, Purdue MN 11/17)
12113nf ICELAND ISBS in Icelandic 2305, nx, needed ECSS USB to read sig (Vadino WA 11/10)
ED: also rptd last month by Levison PA. Vadino measures 12112.5. Good catch!
13715 CZECHOSLOVAKIA R. Prague in EG 1439-1625, nx, ID 1444, cmtry, mx, features, freqs & skeds, off at 1625 (Trotto FL 11/19, Zilmer NM 11/20)
14297 USA WAINAN Goddard Space Station (USB) in EG 2125, continuous voice communication of Atlantis shuttle landing and NASA base, //71E3 (ISR), q (Zilmer NM 12/3)
15095 ISRAEL Kol Israel in HE 1250, local upbeat mx sels, ID, nx (Jordan PA 11/18)
15100 CHINA R. Beijing in SP 0100, nx, ID repeated several times (Dickson OH 11/17)
15105 ASCENSION IS. BBC relay in FR to 1900, then EG by radio for FR speakers, pgn in Hausa begun at 1915 for W. Afr., nx, f (Palmer WA 11/30)
15110 USA WMLK Pennsylvania in EG 1830, ID, religious tlk, equip. test (Palmer 12/5)
15120 VATICAN CITY VR in FR/EG 1535-1556, relig tlks, church nx, f (Dillon MD 11/9)
15135 WEST GERMANY DW in SH 1600-1650, recitation, sports interview, ID (Dillon 11/9)
1514C CHILE R. National in SP 1933-2002, live soccer match, ads, f (Dillon 11/9) also in SP w/soccer match "Chile vs. Paraguay", excited announcer (Feeley GA 11/10)
15140nf CANADA RCI in FR 2010-2020, tlk, ID 2015, CRM R. Nac. Chile (Trotto FL 11/9)

- 15150 NEW ZEALAND RNZ in EG 1738-1831, variety mx, regional nx & wx, time pips, T/C, ID, relay of dom svce to Pac Is (Allen OK 11/28, Palmer WA 11/30, Park HI 11/30)
- 15160 MEXICO L V America Latina in SP 2310, live event w/crowd noises (Florian IL 12/1)
- 15170 SOCIETY IS. R. Tahiti in TT/FR 0345-0430, island mx, exc (Dickson OH 11/30)
- 15190 BRAZIL R. Inconfidencia in PT 2155-2220, pop vocals, ID, freq anmmts 2200, f (D'Angelo PA 11/16) 0036-0100 in PT, soccer match, nc ID (Dillon MD 11/15)
- 15200 BRAZIL P. Nac da Amazonia in PT 2010, excited coverage of basketball? game, g (Allen OK 11/24) 2024-2031* in PT, tlks, T/C, promc, IS mx, ID (Palmer WA 11/11)
- 15205 MOROCCO VOA relay Tangier in EG 2000, nx, cmntry on Polish elections (Hill MA)
- 15240 YUGOSLAVIA RY in EG 1530, nx, rpt on Willie Brandt's visit to Belgrade (Hill MA)
- 15260 CANADA RCT in EG 1923, "Spotlight on Science", p (Park HI 11/21)
- 15275 WEST GERMANY DW in GM 1901, nx abt Africa, ID, beam to Afr & Mideast (Palmer WA)
- 15300 FRANCE RFI in FR 1926, M & W DJ team with mx request pgm, f (Park HI 11/23)
- 15305 NORWAY RNI in EG 1300-1330, IS, ID, nrx, ezl mx (Jordan PA 11/10, Levison PA)
- 15315 NETHERLANDS ANTILLES RN Bonaire relay in PT 2243-2246, tlk, ID (Palmer WA 11/9) 0002 in SP, Tom Meijer's "Estacion de la Aleoria", QRM, p (Park HI 11/4)
- 15325 AUSTRIA ORF in EG 1225, "Report from Austria", g (Nagel PA 12/3)
- 15325nf? NO. MARIANAS IS. KFBS Saipan in lang 0010-0130, pop mx, tlk, Xmas songs, rock vocals, full ID in lang & EG, prayers? (Sharpe CA 12/6)
- 15345 SWEDEN RSI in EG 1405-1430, nx, DX pgm, tlk on nuclear effects (Cobb ME 11/28)
- 15350 WEST GERMANY DW in GM 2031-2036, financial nx, IS, ID 2035, tlks (Palmer WA 11/9)
- 15365 CANARY ISLANDS REF Spain relay in SP 0103, nx, ID, het QRM (Dillon MD 11/14)
- 15375 SCOUTH KOREA RK in IN 2307, tlk on Korean dishes, SW pgm, p (Park HI 12/7)
- 15400 ASCENSION IS. BBC relay in EG 2002, nx, "24 Hours", f (Park HI 11/26)
- 15405 NO. MARIANAS IS. KYOI Saipan in JP/EG 2350, rock mx, ID 2400, p (Hill MA 10/28)
- 15425 SRI LANKA AWR in EG 1545, relig pgm, "The Plain Truth", ID, p (Harms MD 10/6)
- 15435 SINGAPORE BBC relay in EG 2314, ID, "Letterbox", p (Park HI 12/7)
- 15445 PHILIPPINES FEBC in EG 2330, nx, "Sunrise" pgm, f (Zilmer NM 11/21)
- 15450 LIBYA R. Jahamariya in EG 1900-1930, excerpts from Khadafi speeches re exploitation of African blacks (Rinsley KS) 2330 in EG, req cassette rpts (Schulze W.Ger)
- 15455 USSR R. Moscow-Simferpol in EG 2130, nx, "Pop Box" on Tadjik mx (Park HI 11/14)
- 15475 GABON Africa No. 1 in FR 1905-1920, relay RFI nx, variety mx (Palmer WA 11/12)
- 15475 USSR R. Moscow in EG 1231, nx in brief, g (Nagel PA 12/3) 1620-1656 in EG, cmnts by Gorbachev on Summit, nx, ID, role of Commun. party, mx, f (Dillon MD 11/23)
- 15565 NETHERLANDS RN in EG 1430-1513, "Newslines", media network to 1513 then switched to 15560 until 1525 s/off (Zilmer NM 11/21) ED: Listed 15560, engineering goof??
- 15570 SWITZERLAND SRI in EG 1315-1335, nx, cmntry (Zilmer NM 12/5, Prath FL 11/30)
- 17620 FRANCE RFI in FR 1430, mx, nx, interview, g (White FL 11/26)
- 17655 USSR R. Moscow in EG 0840, folk mx (Park HI) 1515 in EG, mx, nx (Dillon MD 11/9)
- 17755 BRAZIL R. Surinam Int. in EG 1805-1820*, interview, ID, nx (Nikolich IL 11/29)
- 17775 CHINA R. Beijing in SP 2300, IS, ID's, xsmn to S. Am., f (Park HI 11/11)
- 17775 UNITED ARAB EMIRATES Dubai in EG 1337, nx, wx, "Mailbag", AR 1358 (Dillon MD)
- 17795 AUSTRALIA RA in EG 0000, nx (Dickson OH) 0418 in EG, songs, DJ (Park HI 11/1)
- 17810 JAPAN RJ in EG 0100, nx, current affairs, Japan scene, //15420 (Zilmer NM 12/5)
- 17885 ASCENSION IS. BBC relay in EG 1555, nx re Liberian elections (Levison PA 11/12)
- 21605 UNITED ARAB EMIRATES R. Dubai in EG 1343, review of UAE newspapers, ID, req for reception rpts, g (White FL 11/12)
- 21660 ASCENSION IS. BBC relay in EG 1715-1730+, "Focus" on events in Afr (Jordan PA)
-
- I hope you all had a memorable Christmas and I wish all the best in 1986 to each of you. Let's hope the new year produces some rare DX and the Russians dump all their jamming equipment into the Black Sea.
-



Distributing Editor: John F. Henault, 55 Lincoln St., Abington, MA 02351

CONTRIBUTORS LIST ----- FRENDX ----- JANUARY, 1986 ISSUE

Brian ALEXANDER, Mechanicsburg, PA.; Arthur BONNET, W.Lafayette, IN.(DX400);
Ralph BOWDEN, Mentone,CA.(FRG7700); Ken COBB, Portland, ME.(R71A/RF4900);
Richard D'ANGELO, Wyomissing,PA.(R70); Richard DICKSON, Goshen,OH.(FRG8800/
DX302/XCR30);Peter DILLON, Columbia, MD.(DX400); Jim FEELEY, Norcross,GA.,
(R2000); Jay FLORIAN, Lake Zurich, IL.(FRG7700); Karl FORTH, Chicago, IL.,
(R70/HQ160); Tom GAVARAS, Minnetonka, MN.(R70); Bill HARMS, Woodlawn, MD.,
(FRG7/RF3100); Ken HILL, Somerville, MA.(DX1000/Sony 2010); Brian JONES,
San Antonio, TX.(R70); Rufus JORDAN, Pittsburgh, PA.(DX302/ZENITH TRANSOCEAN.)
Jack KOENEMAN, Virginia Beach,VA.(FRG8800); Harold LEVISON, Philadelphia, PA.,
(R70); Travis McLEMORE, Clearwater, FL.(FRG7); Bob NAGEL, Pittsburg, PA.,
(ICF2002/RF2800); Mike NIKOLICH, Chicago, IL.(NRD515/CR2021/SPR4/HQ180);
Andrew O'BRIEN, Alden, NY.(R2000); Dale PARK, Honolulu, HI.(ICF6700W);
Sheryl PASZKIEWICZ, Manitowoc, WI.(NRD515); John PRATH, Ft. Lauderdale, FL.,
(R71A/FRG7000/FRG7); Ronald PURDUE, Byron, MN.(DX300); Christos RIGAS,
CHICAGO, IL.(R2000/ICF2002); Roland SCHULZE, Stuttgart,W.Germany(R4C/SPR4/
R70); Bryan SHARPE, Castro Valley, CA.(DX302/DX400); Bob THUNBERG, DuBois,
PA.(R1000/CR2021/S40B); Ron TROTTO, St.Cloud, FL.,(CR2021); George VADINO,
Bellevue,WA.(R71A); Frederick WHITE, Old St. Auguastine, FL.(2-NRD515's);
Robert ZILMER, Rio Rancho, NM.(R1000)

=====

There we have it for another month folks. I am pleased to see that this month we have 33 Contributors. Somewhat better than last month thankfully.

To those of you whose loggings were received after the deadline, please be assured that your loggings were included in this months packages to the various editors. This will be the procedure followed by this editor unless I am directed otherwise by the Publisher. If an Editor decides not to use your loggings, please bear in mind that I simply Snip & Sort, in no way do I determine what is and is not used by the Column Editors. Take your complaints up with those Gentelman, Not me hihi.

I hope you all enjoyed the Holidays which have just passed and I am now looking forward to another good year associated with FRENDX.

One final item this month ***** PLEASE CUT YOUR LOGGINGS INTO USEABLE STRIPS*****

73's
John

TRANS WORLD RADIO, BONAIRE, NETH. ANTILLES, CARIBBEAN
HIGH FREQUENCY TRANSMITTING SCHEDULE 31 OCTOBER 1985

FINAL D-85 (03 NOV 85 - 02 MAR 86)

Freq. mb kHz	Time-Hora UTC/GMT	Time-Hora BONAIRE	Day-Dia	PWR KW	Azi Deg	Zones Zona	Target Alvo	Language Idioma
6145	49	0655-0930	0255-0530	Mon	50	170	12-16	S. Am. Portuguese
6145	49	0725-0930	0325-0530	Tue-Sun	50	170	12-16	S. Am. Portuguese
9515	31	0925-1030	0525-0630	Daily	250	160	12-16	S. Am. Portuguese, German
9535	31	0300-0530	2300-0130	Sun, Mon	50	327	6-8	N. Am. English
9535	31	0300-0400	2300-2400	Tue-Sat	50	327	6-8	N. Am. English
9535	31	0403-0500	0003-0100	Tue-Sat	50	285	10,11	C. Am. Spanish
9665	31	0942-1100	0542-0700	Daily	50	176	12-16	S. Am. Spanish
11815	25	1110-1255	0710-0855	Mon-Fri	50	336	6-8	N. Am. English
11815	25	1110-1332	0710-0932	Sun	50	336	6-8	N. Am. English
11815	25	1110-1405	0710-1005	Sat	50	336	6-8	N. Am. English
11875	25	2255-0215	1855-2215	Daily	50	176	12-16	S. Am. Spanish, Portuguese, Spanish
15355	19	2325-0045	1925-2045	Mon-Sat	250	160	12-16	S. Am. German, Portuguese, Spanish
15355	19	2325-0030	1925-2030	Sun	250	160	12-16	S. Am. German, Portuguese
*Special: Christmas Day Only - 25 December 1985								
15195	19	1400-1800	1000-1400	*	50	336	2-4, 6-8	N. Am. English, @1700 UTC Bilingual: Spanish/English (Christmas)
15355	19	1800-2100	1400-1700	*	50	176	12-16	S. Am. Spanish (Christmas)
15440	19	2100-2245	1700-1845	*	50	176	12-16	S. Am. Spanish (Christmas)
Alternate frequency for 15355 & 15440 KHz on Christmas Day will be 15400 KHz.								

TENTATIVE M-86 (02 MAR 86 - 04 MAY 86), J-86 (04 MAY 86- 07 SEP 86)

Freq. mb kHz	Time-Hora UTC/GMT	Time-Hora BONAIRE	Day-Dia	PWR KW	Azi Deg	Zones Zona	Target Alvo	Language Idioma
6145	49	0655-1100	0255-0700	Mon	50	170	12-16	S. Am. Portuguese, Spanish
6145	49	0725-1100	0325-0700	Tue-Sun	50	170	12-16	S. Am. Portuguese, Spanish
9515	31	0925-1030	0525-0630	Daily	250	160	12-16	S. Am. Portuguese, German
9535	31	0300-0530	2300-0130	Sun, Mon	50	327	6-8	N. Am. English
9535	31	0300-0400	2300-2400	Tue-Sat	50	327	6-8	N. Am. English
9535	31	0403-0500	0003-0100	Tue-Sat	50	285	10,11	C. Am. Spanish
11815	25	1110-1255	0710-0855	Mon-Fri	50	336	6-8	N. Am. English
11815	25	1110-1332	0710-0932	Sun	50	336	6-8	N. Am. English
11815	25	1110-1405	0710-1005	Sat	50	336	6-8	N. Am. English
11875	25	2255-0215	1855-2215	Daily	50	176	12-16	S. Am. Portuguese, Spanish
15355	19	2325-0045	1925-2045	Mon-Sat	250	160	12-16	S. Am. German, Portuguese, Spanish
15355	19	2325-0030	1925-2030	Sun	250	160	12-16	S. Am. German, Portuguese.

Distribution: TWR(all), TWR Monitors, Other Radio Stations, SWL Publications & Clubs.

Monitors: Please report, using SINPO code on broadcasts to your area. Identification of interference by name, call sign or language is helpful.

Monitores: Favor relatar, usando o código SINPO nas transmissões à sua área. A identificação da interferência por nome, idioma, ou sinal ajuda.

Por favor, use el codigo SINPO en transmisiones a su area. Identifique la interferencia por su nombre, idioma o signos de identificacion, esto ayudaria mucho.

Radio Stations: We would appreciate receiving one copy of your HF Schedule as they are published.

Please address Monitor Reports and HF Schedules to :

Frequency Coordinator
 Trans World Radio
 Bonaire
 Neth. Antilles
 CARIBBEAN

RADIO EARTH INTERNATIONAL, INC.

NEWS RELEASE

November 1, 1985

1724 SHERMAN AVENUE
EVANSTON, ILLINOIS 60201 USA
TELEX 70337Z RADIOEARTH UD
TELEPHONE (312) 482-8300

Radio Earth, an international broadcasting service partially sponsored by the Curacao Tourist Bureau, has made an official request for a shortwave radio station license in Curacao. Approval by the Netherlands Antilles Landsradio Dienst is expected after the U.S.-based company's local attorney, Henri Sperwer, establishes a local subsidiary.

On October 8, Radio Earth purchased a shortwave transmitter, which will eventually be placed on Curacao. The transmitter, presently located in Los Angeles, California, is scheduled to arrive at Radio Earth's new transmitter manufacturing plant in Vinton, Iowa on November 15. In Iowa, Radio Earth Curacao project engineer Jon Gorski will do extensive modification work on the unit. Gorski says that after modification, the transmitter will have an output of 25,000 watts, making it the most powerful broadcast transmitter on the island of Curacao.

The transmitter will not operate on the standard AM and FM bands; only on shortwave frequencies between 2 and 28 MHz. "Our object is not to compete with local Curacao stations," said Radio Earth General Manager Jeff White. "In fact, it will probably be impossible to hear the station on Curacao. We will only be beaming abroad, to an overseas audience."

Radio Earth's transmitter will be unique in many respects, says Gorski. "The International Telecommunication Union has been talking about requiring stations to use a special mode of operation called 'single sideband' in the future. If they do, we'll be ready, because our transmitter will be switchable from the standard broadcast mode to single sideband, and it will put out at least double the power in the sideband mode."

Gorski has also been talking with Leonard Kahn, inventor of the AM stereo system, about the possibility of installing a stereo generator in Radio Earth's transmitter. "If that happens," said Gorski, "Radio Earth will become the first stereo shortwave station in the world." Until stereo shortwave receivers are widely available, the signal will be audible on ordinary radios, and the stereo effect can be heard using two receivers.

Having begun operations in 1983 from studios in the Curacao Hilton, Radio Earth is recognized as one of the pioneers of commercial shortwave radio, a medium long used only by governments and religious organizations (such as Radio Nederland and Trans World Radio on Curacao's neighbor island of Bonaire). For the past two-and-a-half years, Radio Earth has only operated six or seven hours a week, purchasing air time on existing shortwave stations in the Dominican Republic, the United States and Italy. "Having our own transmitter will give us a great deal more flexibility," said White. "We will be able to expand our schedule considerably."

Each December, Radio Earth sponsors a group tour to Curacao for its listeners in North America. This year, about two dozen people are expected to take part, including at least one person from Europe. From December 8 to 15, they will tour the island and enjoy the Curacao sun and sand.

Radio Earth receives several letters each week specifically requesting Curacao tourist information. Each inquiry is answered by Radio Earth itself, or passed on to one of the Curacao Tourist Board offices. Most inquiries come from the United States and Canada, although more are now arriving from Europe, since Radio Earth inaugurated its European Service in July.

"Both the Curacao Island Government and the Tourist Bureau have been extremely supportive of our work since 1983," said White. "Curacao's Finance Director, Maurits Larmonie, is the person who encouraged us to establish a station on the island, and Rafaelito Hato was originally responsible for the Tourist Bureau's sponsorship of our programs. They saw that in the highly competitive area of Caribbean tourism, unique promotional media have to be used. I think that Curacao has one of the most innovative external promotional campaigns in the world."

Radio Earth is working closely with the Netherlands Antilles Landsradio Dienst on the project. "We have been in regular contact with Jose Cijntje regarding technical details and potential sites," White said. The station is considering one site on the northwest tip of the island, near Westpunt.

Initially, Radio Earth will employ a chief engineer, several operator/announcers, and a few administrative personnel. "We will hire all local personnel for our Curacao operations," said White, "since Curacao has the professional talent we need, and since we want to contribute as much as we can to the local economy. It's a rather unique situation, really, since the money the Curacao Tourist Board spends on us is used for worldwide promotion, yet it will never leave the island."

- 30 -

EDITORS: For further information, contact Jeff White or Michael Poulos at (312) 492-9300.

TECHNICAL DETAILS

Transmitter Manufacturer: Technical Materiel Corporation (TMC)

Power Output: 25,000 watts AM; 50,000 watts SSB

Frequency Range: 2-28 MHz (synthesized tuning)

Antenna: Several possibilities are presently being considered, including corner reflector, rhombic and log periodic designs

Target Areas: Initially, North America and the Caribbean (ITU Zones 1-4, 6-9, 11); in the near future, a second antenna will be installed to cover South America (ITU Zones 12-16)

Projected Sign-On Date: June 1, 1986

Note: TMC transmission equipment is also used by standard time stations WWV, WWVH, and CHU.

product preview

What's New
At Grove

FOR IMMEDIATE RELEASE

December 17, 1985

THE LISTENER'S HANDBOOK

by Bob Grove

Unquestionably, two of the most popular books ever sold through Grove Enterprises were Bob Grove's *COMMUNICATIONS MONITORING* and *BEHIND THE DIAL*, now out of print.

Bob has taken the basic subject material from those two books, extensively reorganized, updated and supplemented it, and provided new illustrations and photos wherever necessary. The result is *THE LISTENER'S HANDBOOK*, destined to be a classic in its field.

Virtually every imaginable topic of interest to the listener is thoroughly and expertly explained in Bob's famous easy-to-understand manner. Subjects include the radio spectrum and its users; security and surveillance equipment and techniques including scrambling; how to choose a receiver; selecting the best antenna for your installation; all about coax cable, preamplifiers and preselectors; interference and its cures; and a host of other important topics.

For the do-it-yourselfer, Bob has included a special home projects section with easy-to-build filters, tuners, receivers, descramblers, antennas, power supplies, converters, amplifiers, and many other essential accessories for the serious listening hobbyist.

Containing well over 100 illustrations, charts and tables, *THE LISTENER'S HANDBOOK* is an indispensable reference for any listener to the first 1000 megahertz of the radio spectrum.

\$12.95 plus \$1.50 shipping from Grove Enterprises, Inc.,
P. O. Box 98, Brasstown, NC 28902. 94 pages, 8 1/2 x 11, softbound.

Exclusively from
**GROVE
ENTERPRISES**



P.O. Box 98
Brasstown, N.C. 28902
704-837-9200

HAP BID ITEMS: #482:FEBC(Philippines)paper pennant(4x9.5")red,blue,B&W.#483:LR5 Radio Excelsior(Argentina)cloth pennant(4.5x10")blue,white,gold-very nice!#484:Darling Downs TV Ltd.(UK)sticker-type pennant(4x4")m/c.#485:TRR(Monaco-Bonaire)paper pennant(3.5x8")red,white.#486:Radio Moscow cloth pennant(3.5x5.5")red,white,blue.#487:Emisoras Gran Colombia(Ecuador)very large cloth pennant!(8x11.5")m/c-a super item!#488:Radio Valleri Internacional(Euro-Pirate)paper pennant(6x8")red,black-very rare and old!#489:Radio Exterior de Espana cloth pennant(5x8")m/c.#490:Voice of Turkey cloth pennant(4.5x8")m/c.#491:Voice of Turkey cloth pennant(7x12")m/c-nice!#492:HRVC cloth pennant(6x10.5")B&W, blue-very good looking!#493:Radio Nederland cloth pennant(4x6")red,white,blue.#494:Radio Sweden cloth pennant(3.5x9")blue,yellow.#495:Norea Radio(Norway)paper pennant(3.5x8")red,white,blue.#496:Radio Sofia(Bulgaria)cloth pennant(3.5x5.5")2 tone blue-old style, very rare!#497:RBI cloth "Bear/Logo"pennant(6x9")m/c-beauty!#498:Radio Casino(Costa Rica) cloth pennant(4x7.5")green,white.#499:Burma Broadcasting Service mini-sticker(1x2")brown, yellow.#500:KGEI "20th Anniversary"paper pennant(5.5x8.5")gold,yellow,blue.#501:DLF(FRG) vinyl pennant(5x8")m/c-very nice!#502:Alfa Radio Music(Italy)sticker,red,white,blue,odd sized!#503:KEZK match book,brown,tan.#504:Radio TV Cultura(Brasil)decal(2.5x3")m/c.#505: Radio Beijing,large plastic red and white carrying bag-very nice!#506:CKSA plastic ID card.#507:4XO(New Zealand)very large station poster of DJ interviewing woman listener in bed,m/c.#508:HD2IOA(Ecuador)decal(2.5x3")m/c-nice!#509:Viking Radio(UK)station magazine, very interesting!#510:Deutsche Welle new style sticker in German(4x4")m/c.#511:RCI 5 different QSL cards-good selection.#512:CFMX decal(4x9")m/c.#513:Radio Beijing station pin, blue,white.#514:Radio Beijing "waves"station pin,blue,white.#515:BBC Radio 4(UK)large m/c station poster-good looking!#516:Radio Candide(Italy)sticker(2.5x6")red,white.#517:CHQT station booklet(8.5x11")informative.#518:The Business of Broadcasting 5 different cassette tapes in a holding frame - info on tapes is great!#519:American Radio - Spring 1984, 100s of pages of data, market reports,ratings,shares for all AM/FM stations in the US-great item!#520:Netherlands World Broadcasting over 100 pages of the history of broadcasting in Holland - packed with photos!#521:CKFM 3 different m/c station posters-very nice!#522: WRNO QSL card(4x6")m/c.#523:SBC QSL card(4x6")m/c.#524:CFMX "Drummer Boy" large station poster,m/c.#525:Radio Palma de Mallorca(Balearic Islands)sticker(6x6")yellow,black.#526: Radio Kelly Milano-FM(Italy)sticker(3x5")yellow,black.#527:Radio Meneghina(Italy)sticker (2"cir)m/c.#528:Radio Budapest Shortwave Club station pin,silver,blue.#529:Radio Popolare (Italy)sticker(2x4")yellow,B&W.#530:Radio Milano Underground(Italy)odd sized sticker,m/c-very good looking!#531:ORF(Austria)sticker in Spanish,red,B&W.#532:Radio Beijing station pin,gold.#533:Radio Meneghina decal(1x10")white,purple.#534:BRT(Belgium)large plastic paper clip(3x6")B&W.#535:Radio Vatican 4 different QSL cards(4x6")m/c-very nice!#536:RBI (DDR) 3 different QSL cards(4x6")m/c.#537:Radio Monte Carlo(Monaco)"Staff"QSL card(4x6") m/c.#538:Radio Polonia QSL cards, 3 different(4x6")m/c.#539:Radio New Zealand 3 different QSL cards(4x6")m/c.#540: Caribbean Beacon QSL card(3.5x7")m/c-sharp looking!#541:RBI(DDR) cloth "Logo"pennant(5x8")red,white,blue.#542:VHF-UHF Digest club bulletins-1974 complete. #543:VHF-UHF club bulletins-1975 complete.#544:SPEEDX club bulletins-1980 complete.#545: SPEEDX club bulletins-1980 complete.#546:SPEEDX club bulletins-1983 complete.#547:RIB bulletins-1984 complete.#548:L'ONDE club bulletins-1980 complete.#549:VHF-UHF bulletins-1984 complete.#550:L'ONDE club bulletins-1979 complete.#551:VOA sticker(3"cir)red,white, blue.#552:Radio Polonia pin,silver,red.#553:KVLK golf tee,green,white.#554:CKKW match book, red,white,blue.#555:CKUA metal badge(3.5"cir)pink,purple-great!#556:CKFM metal badge (3"cir)yellow,B&W.#557:CKKW metal badge(2x3")red,white.#558:CKFM metal badge(2"cir)red,B&W.#559:CKLG 12" ruler,red,white.#560:CKFM station pen,silver,blue.#561:KQDS cloth arm patch (2x4")orange,black-super!#562:ROME cloth arm patch(2x2")yellow,black.#563:WMJS razor,black, yellow.#564:WKDW razor,yellow,black.#565:WLNA razor,B&W.#566:German Beer Coasters,3 different,m/c-very nice!#567:ABC-TV(Australia)"Hunter"sticker type pennant(4x6.5")orange, brown.#568:IBRA Radio paper pennant(4x7")m/c-very nice!

OTHER DIRECT SALE ITEMS: While the supply lasts we are offering the following paper pennants for only \$.50 each(!)RCI,RAE,RTB-F,Radio Veritas,HCBJ,KTHR,Radio Ulan Bator,RNZ,RSI,Radio Sweden,RFI,AHR...litter bags at \$.25 each:RBI,KIVI-TV,WVWE and RTE Radio2...CKSW paper folder at \$.25...BBC-WS poster at \$.25...WLS and WRCK napkins at \$.25...KBOI paper hat at \$.25...Copper Island poster at \$.25...Voice of Syncom poster at \$.25.

ADDRESS: Send your bids and orders for direct sale items to Sam Barto, 47 Prospect Place, Bristol, CT 06010 USA

DIRECT SALE ITEMS: The following stickers/decals are \$.25 each or any five(5) for \$1.00:WEW, CJRC,CHRD,CKLW,WQBM,CJVL,Radio Clwyd,CKM,KHCB,WBCK,WYRK,CHAT,CHNL-107,2-104,CHNL-1340, CHNL-1400,CBC-Prince Rupert,KATT,CHAT-ID,WKMF(Large)(small),Z-100,KWRE,WDRQ,WLLZ,WDSB,KWK, WKRI,WCRZ,KCFM,WPOC,KENR,WGNU,WBRU,KSIV,WCAU,WESL,CHEX,Radio Hallam,KRBC,CKPG,CKEC,CFRN, CBC,Deutsche Welle,KZEU,Radio Luna,South Coast Radio,ERF-TV,CFGO,CFOR,CKLC,KACC,CFRY,CJBK, CJET,CKUE,CKPR,CJRT,CJCL,CJSB,CKQM,CKTA,CKWS,CKPT,CKKW,CKCO,WPCF,WOWI,CFOS,CIRK(Large)(small),CFCN,WLIZ,WXQR(Large)(small),2ZW,WYYX,KNPA and CKRY.

SPECIAL OFFER: For a limited time only - and to stuff your reception reports we are offering 50 stickers/decals for only \$5.00!!! These are of my choosing - you may receive duplicates.

NORTH AMERICAN SHORTWAVE ASSOCIATION45 Wildflower Road
Levittown, Pennsylvania 19057FIRST CLASS MAIL
U.S. POSTAGE
PAID
Levittown, PA
Permit No. 319**FIRST CLASS MAIL****NASWA****"UNITY AND FRIENDSHIP"
PUBLISHES FRENCH MONTHLY****NASWA MEMBERSHIP FEES:**

First Class North America.....	\$16.00
Overseas - Surface Mail.....	\$16.00
Airmail to Central America, Caribbean, South America and Europe.....	\$25.00
Airmail to Asia, Africa and the Pacific.....	\$28.00

All remittances must be in U.S. funds and mailed to:

NASWA, 45 Wildflower Road, Levittown, PA 19057, U.S.A.

Besides **FRENCH**, NASWA also publishes **UPDATE** . . . a mid-month newsletter with the very latest DX news while it's still news. **UPDATE** also appears in each issue of **FRENCH**. It is available only to NASWA members.

update**UPDATE SUBSCRIPTION RATES PER YEAR:**

North America (First Class).....	\$4.00
Overseas (Airmail).....	\$6.00
North America.....	\$1.00
Overseas.....	\$2.00

Sample copies of **FRENCH** and **UPDATE** are available for:

EXECUTIVE DIRECTOR & PUBLISHER - Bill Oliver, 45 Wildflower Road, Levittown, PA 19057
SHORTWAVE CENTER - NASWA Headquarters
LISTENERS NOTEBOOK - Glenn Hauser, Box 490756, Ft. Lauderdale, FL 33349
QSL REPORTS - Sam Barto, 47 Prospect Place, Bristol, CT 06010
UPDATE - Tom Allemen, 636 E. 74th Terrace, Kansas City, MO 64131
DISTRIBUTING EDITOR - John F. Henault, 55 Lincoln St., Abington, MA 02351
LOG REPORT A - Mike Harris, P.O. Box 264, Grove City, OH 43123
LOG REPORT B - Jerry Berg, 38 Eastern Ave., Lexington, MA 02173
LOG REPORT C - Peter Drizhal, P.O. Box 663, Oxon Hill, MD 20745
LOG REPORT D - Wallace C. Treibel, 357 N.E. 149 St., Seattle, WA 98155
SCOREBOARD - Jerry Lineback, 115 Wroxtton, Conroe, TX 77304
AWARDS PROGRAM CHAIRMAN - John Kapinos, 86 S. Quinsigamond Ave., Shrewsbury, MA 01545
COUNTRY LIST CHAIRMAN - Don Jensen, 5204 70th Street, Kenosha, WI 53140
U.K. REP. - Alan Thompson, 16 Ena Ave., Neath, W. Glamorgan, Great Britain SA11 3AD