

# FRENDX

GEOGRAPHIC KNOWLEDGE OF THE GLOBE\*

\*PORTUGAL - THE COUNTRY THAT HAS CONTRIBUTED MOST TO

RADIO PORTUGAL  
Emissora Nacional  
de  
Radiodifusão

AND EXPLORED NEARLY TWO-THIRDS OF THE INHABITED GLOBE\*

\*IN THE COURSE OF ONE CENTURY SHE DISCOVERED

**SECOND ANNUAL ALL-BAND DX SPECIAL!**  
**ABC TALKRADIO / RAY BRIEM SHOW**  
**SATURDAY, DECEMBER 7, 1985-0806 utc**

HERE'S YOUR CHANCE TO JOIN OUR ALL-NIGHT NATIONWIDE DX GABFEST! RAY BRIEM--"THE KING OF ALL-NIGHT RADIO", WILL WELCOME IN-STUDIO GUESTS GRANT MANNING OF RADIO WEST; PAUL SWEARINGEN, "CLUB CORNER" EDITOR FOR MONITORING TIMES & MUSINGS EDITOR FOR THE NRC; AND STEWART MACKENZIE, PRESIDENT OF THE ASWLC. WE'LL ALSO FEATURE TELEPHONE HOOK-UPS WITH DR. BRUCE ELVING, PUBLISHER OF THE FM ATLAS; ARTHUR CUSHEN, WORLD-RENOWNED DXer FROM INVERCARGILL, NEW ZEALAND; DR. RICHARD WOOD, PRESIDENT OF THE IRCA--AND MUCH MORE!! WE ALSO WANT TO TALK TO YOU--SO JOIN IN AND SHARE YOUR DX-PERIENCES OR QUESTIONS, BY CALLING IN DURING THE SHOW. JUST DIAL: **(213) 879-8255**

REMEMBER, THIS IS A TOLL-CALL--SO, WHEN YOU DIAL THROUGH, JUST LET THE PHONE KEEP RINGING--WE'LL ANSWER JUST BEFORE YOUR TURN TO GO ON THE AIR, KEEPING THOSE LONG-DISTANCE CHARGES DOWN! ANY QUESTIONS, SUGGESTIONS OR COMMENTS SHOULD BE SENT TO:

GREG HARDISON  
 KABC RADIO  
 3321 S. LaCIENEGA BLVD.  
 LOS ANGELES, CA 90016

**DX ON THE AIR!!**

HERE'S WHERE TO TUNE IN

(#-TAPE DELAYED, OR MAY START AT DIFFERENT TIME-CHECK LOCAL STATION)  
 (STATION LIST SUBJECT TO CHANGE)

WQBK-1300/NY	WSLI-930/MS	KZJO-630/UT
KZIA-FM-101.7/NM	WOKV-600/FL	KRNN-930/TX
WCNN-680/GA	WNIR(FM)-100.1/OH	KTMS-1250/CA
WIIN-1450/NJ	KLCL-1470/LA	KUHL-1440/CA
KERN-1410/CA	KPEL-1420/LA #	WTNT-1270/FL
WBCM-1440/MI	KABC-790/CA	KNST-940/AZ #
WERC-960/AL	WGIR-610/NH	KELI-1430/OK
WTPP-1060/MA #	WHBQ-560/TN	WSAU-550/WI
KMFO-1540/CA #	WABC-770/NY	WOCB-1240/MA
WKCW-910/SC	WKIS-740/FL	WBBW-1240/OH
KVOR-1300/CO	WKYX-570/KY	KRIG-1410/TX #
WCOL-1230/OH	KPSI-1450/CA	WNTR-1050/MD (0606 <u>ELT</u> )
WDAN-1490/IL	WTKN-970/PA	WAMJ-1580/IN (0606 <u>CLT</u> )
WOC-1420/IA	WMER-1440/ME	WKDR-1070/NY (0606 <u>ELT</u> )
KGU-760/HI #	KOH-630/NV	WPVA-1290/VA (0606 <u>ELT</u> )
KPRC-950/TX	WBBF-950/NY	WLKR-1510/OH (0606 <u>ELT</u> )

# CONTACT

Editor: Stephen G. Moye, 178 Bartlett Ave., Cranston, RI 02905 Phone: (401) 941-6497

After my expatiation on the ICOM back-up battery nuisance in last month's CONTACT, I hoped for some spirited response from you: the following are the first fruits of my labors. From Richard Oddie (Sonoma, California) we have the following, and he begins: "Stop the Seven Year Battery Dilemma!" --

Not too long ago the American auto industry was riding high. They did things their way. You buyers accepted poorly engineered, poorly assembled cars. "Take our gas guzzlers. Buy our options. Pay our high prices. Don't worry about safety. Trade your car every few years!

Then times changed. Long lines at gas pumps. Lower quality meant higher repair bills. And then Detroit began to hurt. New competition appeared. Neat, lower priced small cars. Very economical. Larger, well engineered, well built big cars. Import sales zoomed, domestic sales dropped. Miles per gallon became more important than miles per hour.

While the auto barons slept, times changed. What could have been accomplished by listening to the voice of the public was mandated by rule of law. Thus, for a change, the interests of the buyer came first.

Now let's look at another corner of the world and another industry -- SWR manufacturing. A sudden rumor and then the realization that one make of SWR has only a seven year life before it goes into a coma and dies.

This is a shock, both emotional and financial, to the owners of these receivers. It is something that must be brought into the open to find out who pays the repair bill and how long the owner will be without the RX (do I detect a pun here?--sgm) that is so important in her or his life.

This is certainly a very real and important issue. It is certainly the time when the North American SW community must speak out with one voice and say the customer must be protected, or else...!

Thank you, Dick, for a very interesting and revealing comparison. Continuing in the same vein of fine consumer outrage, here is a letter from James B. Snow (Murray, Kentucky):

I am a newcomer, not to SWL, but to NASWA. The CONTACT of October 'hit a nerve' as I purchased an ICOM R71A about a year ago.

If permission is granted (and it certainly is--sgm) I would like to Xerox the October CONTACT and mail a copy to guess who. I have owned a Zenith Transoceanic. In ten years the volume control was cleaned and the power cord was replaced (\$11).

[...] I am tired of being duped and ripped-off by manufacturers and retailers and others. At one time a \$300 item really was better than a \$100 one. [...] Now, regardless of price, all are of poor quality and seem to fall apart as the warranty expires.

[...] I will write to ICOM about the vagaries of the R71A. Use this "squawk" in any way. I'm mad!

Good for you! DO WRITE! For now, that is the one effective means that we have at our disposal for telling manufacturers that we won't put up with the nonsense. You might also try to apply a little friendly pressure on your retailer to do the same. The other day I remembered an interesting and similar bit of history. Years ago, in the very early days of consumer photography, the Eastman company (now Eastman-Kodak) marketed a camera that was sold with the film already inside it. You took your pictures, and when you were done you returned the camera with the film still inside it to the Eastman folks; they processed the film and sent back your pictures to you along with a camera with new film in it. When the imperfections of this scheme became clear, it was decided that the consumer could take care of getting the film into and out of the camera -- and photography hasn't been the same since. It just goes to show: some things change (and get better) while others remain dispiritingly the same (and don't).

It is always a pleasure for me to be able to show support for the other hard-working people who labor to make FRENEX the fine publication that it is. To that end, then, a letter from Don Hosker (Whitman, Massachusetts):

I would like to make a brief point to those NASWA members who have never contributed any loggings. Forget about how much you could be helping other listeners. Forget how much other listings have helped you. Forget all of that and consider how great it feels to see your name in print. I recently contributed for the first time and will attest to the thrill of it. As the saying goes: "try it, you'll like it!" Thank you, Don, for this timely reminder. You may remember the non-appearance of a mid-month UPDATE a few months ago: this was due to the absence of loggings. The point is this: you and your contributions to FRENEX do make a difference. Don't be shy -- CONTRIBUTE!

Next, a letter from Erich Schulman (KTN4CA, Oak Ridge, Tennessee) that addresses several matters:

[...]First, let me respond to Tim Davisson's (KD8GZ) comment on "stations who try to force listenership by requiring a certain number of reception reports in a short period of time" in order to get a verification from them, citing specifically BRT and Radio Sofia. [...] Even if getting a QSL requires x reports over y days (x greater than 2, and x>y), that doesn't force listenership: most regular listeners won't bother writing, and the writers will probably never tune-in the station again after getting their QSL. (I wonder if that is really true...Any thoughts?--sgm)

Reception of NHK has always posed problems for me, but I would not consider changing QTH just to hear a station better. It may be worth trying their English service via Gabon in the mid-morning, but the MUF is likely to do you in especially with D85 coming with its lower MUFs. (According to the May 1985 WRTH Newsletter the Gabon relay is active in English 0700-0800UTC on 17710kHz, and 1500-1600UTC on 21550kHz--not so hot--sgm)

I also want to say a few words in my defence. It is true that my MW/SW log is on page 747 (and will be over 800 by the time this is published), but not to worry for I have four easy-to-compile, easy to use indices permitting reference to important information, and I can find most entries within two minutes.

I think I also need to reinforce my position on MW DXing. I have long heard claims of receiving MW stations over very long distances, e.g., reception of 4BH, Brisbane as far away as New York[...] Frankly, I just don't see how such DX reception is possible except under freak propagation conditions[...] My best MW DX catch was a chance reception of Radio Antilles on 930kHz which I got on 19 XII 82 and never again. They were relaying RCL, and I don't want to think about reception quality. By the way, you left off the last letter of Bonair~~e~~. (Oops. I kan spel: rely I kan.--sgm)

I agree that Radio Database International is a fine publication--both editions. I intend to get WRTH86, but if the price keeps increasing, I'll get RDI only in 1987. I like the idea of a hard-cover WRTH86: my WRTH84 needed extensive repairs after six months and my WRTH85 hasn't fared much better. In any case, I'm not going to renew WRTH Newsletter as I've found their information/price ratio appalling.[...]

Thanks for your letter, Erich; you certainly do cover a lot of ground. Two things occur to me. First, I seem to remember hearing Andy Sennitt (Editor of the World Radio TV Handbook) talk about the possibility of a hard-bound WRTH: it was decided against largely because of what it would cost, and because it was felt that there was not sufficient call for it. If you wanted, Erich, you could look in the yellow pages of your telephone book for bookbinders and arrange to have your WRTH hard-bound; but be warned--it will be expensive. Second, although I sympathize with you about medium-wave DXing and the difficulties it involves, I do know that it can be done. Not, of course, from personal experience but from perusing the monthly INTERNATIONAL DX DIGEST in the National Radio Club magazine DX NEWS. It takes patience and determination; it also takes special antennas and other associated pieces of equipment. It may not be your cup of tea, nor mine, but nonetheless it can be done. What is more, we have learned a lot about propagation through MW DXing.

#### \$\$\$ CONTACT NOTES \$\$\$

Duke Alexander has written announcing that his program HamNotes will be continuing on Radio Earth (via KCBI, 11790MHz, 1800-2100UTC Sundays). Senator Barry Goldwater, expressing some pro-SWL thoughts, will be featured on three programs. "Other interviews I hope listeners will enjoy include one concerning computers, one with a representative of the FCC, and other non-technical, people-oriented programs. Good news from HCJB:[...]several of the HamNotes will

be aired via DX Partyline in the near future. John Beck used several of the previous HamNotes programs as part of the Amateur Radio Report (which airs Saturday nights [Sunday UTC] on HCJB.)

From Richard Oddie, organizer of The 515 Club (an association of JRC NRD-515 owners):

Something new from The 515 Club: The 515 Club, an independent association of JRC NRD-515 owners, will send one free copy of their Newsletter, SW SPECTRUM 515, to owners who send a no. 10 SASE and a letter describing their interest in the hobby, their sets and equipment, etc., to 857 Virginia Court, Sonoma, CA 95476.

The Newsletter, with a new 5 1/2"x8" twelve-page format, will present feature articles on "DXing the Polar Regions," "The Search for FAX" and "The Unexpected Treasures of the SW Sky," a frequency review, along with member profiles and useful information. Not affiliated with any dealer or manufacturer.

## \$\$\$ THE CONTACT BOOKSHELF \$\$\$

The literature surrounding SWL can be difficult to come to terms with: there is a lot of it; quality varies enormously; and it can be very difficult to locate in any case. So from time to time we'll examine some of the useful books that can provide some solid help to the SWL. I thought that, as we in North America are entering the season of enhanced reception, that it might be a good idea to look at those works that attempt to make some sense of the seeming confusion on the dials: frequency guides. My two main criteria are: 1) a demonstrated accuracy and utility, and 2) an attractive information-cost ratio. While there are additional possibilities, I have chosen to concentrate on three works:

1. WORLD RADIO TV HANDBOOK (currently in the 39th edition:1985) This is the standard work against which all others are judged. The main part of the work is divided into two sections: radio (some 300 pages) and television (about 50 pages). These sections are then divided into major global areas, at which level the listing of facilities by country begins. All known services are listed and the presentation is clear: medium-wave services are distinguished from long- or shortwave radio transmissions; and domestic services are distinguished from international services. An additional 30 pages at the end of the work list all SW radio stations in order of frequency--a useful cross-reference. There are always a number of interesting articles, equipment reviews by Larry Magne, and a look at propagation possibilities for the coming year. At \$19.50 (list price; it is frequently discounted) it is an excellent bargain. It can be ordered through any bookstore as it is listed in Books in Print. Most SW equipment retailers carry it as a matter of course.

2. RADIO DATABASE INTERNATIONAL (edited by Lawrence Magne and Tony Jones: first edition: 1985) In many respects this is the perfect companion to WRTH, for RDI is a generously annotated listing by frequency. Annotations include: country and site of origin of the broadcast; time and duration of transmission; language of broadcast; where the transmission is intended to be received; and whether or not the transmission is jammed. Of paramount importance is the fact that RDI was compiled by monitoring the international broadcasters rather than by relying solely upon information handed-out by the broadcasters. This makes it much more probable, all things being equal, that you will actually hear what is listed. RDI comes in two parts: Part One (\$9.95+1.85 s/h) covers 5.73-26.1MHz, while Part Two covers 2-5.73MHz, i.e., the tropical bands (\$4.95+0.85 s/h). Both parts can be ordered together for \$12.95+1.95 s/h. Order from: IBS, P.O. Box 300, Penn's Park, PA 18943.

3. Two very fine frequency listings come from Danish Short Wave Clubs International: Tropical Bands Survey (13th ed., 1985); and Homeservice Stations Outside the Tropical Bands (2nd ed., Aug.1985). These works are also the results of monitoring. Information includes broadcast power, origin, times and languages of broadcast and when the station was last reported. Each booklet is a little over 30 pages in length and costs 30 Danish kroner or 8 IRCs. Order from Bent Nielsen, Treasurer DSWCI, Betty Nansens Alle 49, DK-2000 Frederiksberg, DENMARK.

NASWA members have the added advantage of monthly FRENEX Logs to keep them current. Hope this has been of assistance. Again, many thanks to readers and writers. 73-



# Easy Listening

Editor: Alex Batman, 4636 Alvin Dark, Apt. 2, Baton Rouge, LA 70820

## SUNDAY

- 2255-2300: "DX Corner" (Kol Israel). This is a very brief DX program aimed primarily at the novice DXer. Past programs have included how to write reception reports with the information necessary for a log, what to look for in a shortwave receiver, and brief news items like the projected VOA relay in Israel. This program is also the forum for announced frequency and time changes at selected times of the year. (11655/11605/9435/7410, repeated at 0025 on 9435/9315/7410 and at 0125 on the same frequencies. Also repeated at 0225 on 9435/7410/5900).
- 0115-0130: "Journey Into Chinese Culture" (Voice of Free China, Taiwan). This is a fascinating program largely concerned with Chinese mythology, cosmogeny, and religion in general. This program would have been a great addition in the 1960s when you had all night "rap" sessions talking about Eastern religions of which you knew next to nothing. Ah, it brings back fond memories. (5935/6065).

## MONDAY

- 0030-0100: "Music USA: Standards" (Voice of America). This is part of the "Music USA" series which beams to the Caribbean on weeknights on 6130/9455 but not on other VOA frequencies to the Caribbean at the same time. Monday night's program features pop and jazz standards. Composers featured have included Irving Berlin, Keil Hefty, and George Gershwin, and some of the songs have been "I've Got My Man," "Take Five," "Days of Wine and Roses," and "The Glory of Love". Sooner or later I'm going to get around to "Country Music USA" on Friday nights, but that's going to have to wait until the time change so it no longer conflicts with The Twilight Zone. (6130/9455).
- 0110-0125: "Panorama" (Radio Havana Cuba). A program that usually concentrates on basic science--such as the singing of whales, the physical and psychological features of pain, and the social structure of bees--but occasionally the program deals with history or culture. The past two programs, for example, have featured art theft from Africa and pre-Columbian life in Cuba. (6100/6140/9740. Repeated on the same frequencies at 0310 and 0510).

## TUESDAY

- 1415-1425: "Sweden Calling DXers" (Radio Sweden International). This program usually consists of new items about shortwave and usually has a feature on satellite communications. After that there is about five minutes of DX tips separated according to continent and usually contributed by listeners (who are given credit on the air for their tips). Recently the producers have been asking for input from listeners with regard to what we would like to see featured more and what less. Written copies of the DX tips are available on request. (15,345. Repeated at 2315 on 11705 and at 0245 and 0345 on 9695/11705).
- 0112-0125v: "Newsview" (Radio Prague). More view than news. A highly propoganda oriented program that discusses current events and makes editorial comments on them, usually three or four new items/editorial per program. A great number of those editorials feature the arms talks in Geneva and "Star Wars", but other events are included as well--like the recent elections in Poland (5930/7345/3540/9740. Re-

peated at 0312 on the same frequencies).

#### WEDNESDAY

- 0133-0145: "Arts on the Air" (Deutsche Welle) This program covers the arts in any form they might take, from the traditional to the avant-garde. Recent programs have featured the Accoustic Arts Festival in Cologne, the Frankfurt Book Fair, a music museum, and a Theater Festival, also in Cologne. (6040/6035/6145/9545/9565/11735. Repeated for W. Coast at 0533 on 5960/6120/6130/9690/11705).
- 0430-0445: "Classical Record Review" (BBC). Pretty much as the name suggests, the program reviews the latest releases in classical records, playing a one to two minute extract from at least one selection on each record. One of the nice features of the program is that the host, Edward Greenfield, always mentions the label and the serial number in case you want to order the record. (5975/6175/9510).

#### THURSDAY

- 0040-0105: "Around the Arts" (BRT, Belgium). Like "Arts on the Air" from Deutsche Welle, this program from Brussels features items of interest to art lovers, and features include painting, dance, etc. Most of the arts featured on this program, however, are traditional rather than avant-gard, though the latter is not unheard of. (5910. Repeated on Friday mornings at 1320 on 15,590).
- 0110-0125: "P.O. Box 7026" (Radio Havana Cuba). The program features letters, and especially those letters which ask questions, from listeners. Most of the questions are answered in detail (considering the time limits of the program), and there is usually an interlude of Cuban music. Like most of the programs I've heard on Radio Havana it is technically well done even though it sometimes uses the opportunity to sneak in a little anti-Reagan (rarely anti-US per se) propoganda. Not as bad as some stations at this, however. (6100/6140/9740. Repeated at 0310 and 0510 on the same frequencies).

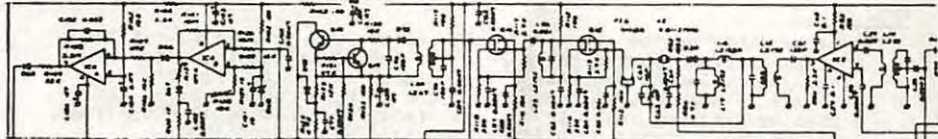
#### FRIDAY

- 2230-2240: "Turkey Step by Step" (Voice of Turkey). An interesting program for prospective tourists (and those just interested in the area generally) that describes Turkish provinces, taking them in alphabetical order. Usually the description includes the landscape, the handicrafts of the area, some history, and significant towns or cities. The last program I heard featured two provinces beginning with "M", but the signal has been nearly inaudible in Louisiana for the last couple of weeks. (9560. Repeated at 0300 on 9560).
- 0230-0245: "World of Science" (HCJB, Ecuador). Fast becoming one of my regular programs. Each program features a brief series of short scientific news items, expertly explained for the layman. Some items have been the pollution of the Rhine, the use of pulsars to support Einstein's Theory of Relativity, the new Erikson method for pre-determining the sex of an unborn child, and research into the common cold. Each program also features "Perspectives", a short look at the relation of science to the Bible. (9870/6230. These are new frequencies for HCJB. 9870 is currently in use, and 6230 will begin on Nov. 3, 1985).

#### SATURDAY

- 2210-2230: "Youth Parade" (Radio Moscow). An informally presented program that features the youth of the Soviet Union. There are many interviews with students (college and secondary school) and with recent graduates (youth apparently defined as including the ages 13-30). Usually plays at least one popular song from the Soviet Union, sometimes two or three. I find this to be one of Radio Moscow's more entertaining programs, perhaps because of the informal style and perhaps because I just like programs about young people (7,115 et.al.)
- 0025-0035: "Spanish Regional Cooking" (Spanish Foreign Radio). This program features selected dishes from various regions of Spain. Usually there is an interview with a chef from the region who talks about the most common and popular foods in the area, and the program always ends with a recipe for the week, available in written form on request. Eat before you listen. (9630/11380. Repeated at 0125 on the same frequencies and for the West Coast at 0525 on 6125/9630).

# Technical Topics



Editor: T.J. "Skip" Arey, WB2GHA, 24 LeJune, Cinnaminson, NJ 08077

## OUR FRIEND THE GROUND or A Session With the Master

Well it had to happen sooner or later. In the course of writing this column, a number of letters have crossed my desk asking questions most technical. That is good for that is why we are here. Keep those cards and letters coming folks.

Then along comes CHUCK OLIVER, writing:  
"Exactly how does a ground improve ones reception? Does it cut down on the noise level or does it increase the incoming signal?"  
How does a ground work?

I DUNNO!!!

Like most folks, I dutifully followed the directions and hooked up my radios to ground and left it at that. I don't recall ever really studying about grounds much beyond the schematic symbols and that you HAD to use them.

BUT WHY?

Whenever I get in this kind of quandry I always place a call to the high mountains of Tibet to my old high school electronics teacher now turned great radio guru BABA RAM GRID BIAS.

Hello Baba...This is Skip. Chuck Oliver wants to know what a ground is.

Ah Dial Twister. It is good to hear from you again. Tell Mister Oliver he has but to look under his feet to find the answer to his question.

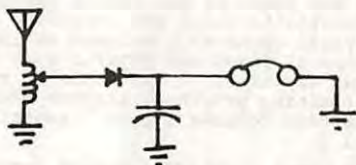
Knock off the mysticism stuff Baba, we're talking nitty gritty radio here not the great questions of the universe.

Ah yes, Chuck Oliver is a true believer then, is he not Dial Twister?

Yeah now hurry up and give me a straight answer. Do you know what it costs to call Tibet? Why don't you get your ham ticket?

Static gives me a headache, Dial twister. Listen and learn...

Every receiver should have a ground. When you think a circuit through, ground is where radio waves must return to. A receiver is really just tapping into the "connection" between radio waves and ground. Think of a simple crystal radio circuit.



The diode detector taps into the circuit from antenna to ground. Sniffing the RF moving along this path the diode is driven into rectification producing the detected signal you hear in the headphones.

Chassis ground is the point in a circuit that is considered to be at ground potential. If you were to hook a chassis ground up to a true earth ground it would not have any negative effect on the circuit.



Chassis ground



Earth ground

Some receivers, portable ones for example, operate with only a chassis ground. But most quality receivers require a good ground connection to improve detection and signal to noise ratio. In most cases the improvement is most noticable.

Aha, Yo Baba...Chuck says he has had no noticable improvement when he hooked his R-1000 to ground.

Relax Dial Twister, there is more to learn...

Not all ground is good ground. Various soil types have varying ground conductivity which is a function of soil composition and moisture content. If you could drive a ground rod into solid rock in the dryest desert it might be as no connection at all. On the other hand, a salt marsh is the ultimate ground. A check with Mr. Oliver's local township engineer might reveal that his area has poor ground conductivity. Also remember that it is hard to depend on the old cold water pipe ground anymore because so many houses are going over to plastic PVC piping and couplers. Many modern water meters have plastic couplings and require a jumper wire to achieve good ground. Likewise the third pin on an electrical plug only counts if it is itself connected to a good earth ground. This might be hard to determine without a full on electrical inspection.

Another purpose of a good ground connection is it serves to reduce the possibility of electrical shock in the event that a receiver should become "hot" due to malfunction. Also placing unused antennas at ground potential gives an alternative path to static charges in an electrical storm, alter alternative to your radios and yourself that is. But remember, Dial Twister, no simple grounding of antennas can prevent or reduce the ill effects of a direct lightning hit. These are antennas, not lightning rods.

Remember, Dial Twister, always read your manual, for it is the path to radio bliss.

Thanks Eaba. Your check is in the mail.

Live long and prosper, Dial Twister.

I've heard that somewhere before, Baba. Goodbye.

And so we return to the hum drum workaday world whilst Baba Ram Grid Bias returns to his habit of contemplating his navel lint.

Lots more stuff to come in future months. And remember all you dial twisters, if your old humble editor can't figure out the problem we can always consult the wisdom of the master.

Like I said. Keep those cards and letters coming folks.

73  
Ship

# NASWA Awards Program

Awards Chairman: John M. Kapinos, 86 S. Quinsigamond Ave., Shrewsbury, MA 01545

Greetings and welcome to the November edition of the Awards Page. Folks who earned NASWA Awards during the month of September, 1985 are:

- Paul BUER, Miami, FL: ORTF DXER, Master Radio Moscow DXer
- Dr. Delbert FYE, Miami, FL: African Continent DXer
- Thomas G. GAVARAS, Minnetonka, MN: Master Pacifica DXer
- Ray NIEKAMP, Minneapolis, MN: Senior European DXer
- Arnold LAUSEVICH, Milwaukee, WI: DX Centurian, DXer de Pacifica
- John SGRULETTA, Mahopac, NY: Senior Time Station DXer, Australian DXer
- John M. KAPINOS, Shrewsbury, MA: Senior Time Station DXer, Senior Radio Moscow DXer.

Afore everyone gets to hollering how olde KAP got on the list, rest assured I did not issue the Awards to myself. Bill Oliver, NASWA Executive Director and FRENEX Publisher reviewed my applications and signed the Awards.

////queries////

We've received a lot of queries regarding eligibility requirements for the Arab and British Commonwealth Awards. For an SASE (IRC Overseas), we'll send you a list of virtually all counties eligible for these Awards.

\*\*\*\*CONTEST\*\*\*\*

A contest on the Awards page!!! Sure, why not. First correct answer from both the U.S.A. and overseas (2 prizes in all) win their choice of a FREE NASWA Award or 3 IRC. The question, and this relates to the NASWA Radio Moscow DXer Awards is: For many years now Radio Moscow has been utilizing a certain Eastern European site in the 31 meter band but has never QSLd the actually site, choosing instead to QSL as "Tula; Lvov; Simferponol or Moscow". What is that site? Hint, it is the actual transmitter site of a major Eastern European Broadcaster.

Till next time.

BEST  
10/17/85



## Computer Corner

Editor: Bill Cole / 107 Charles Street / N. Cape May, NJ 08204

### CAT CONTROL FOR YAESU FRG-8800

by KJELL W. STROM, P.O. Box 2, I-28041 Arona, Italy

Kjell Strom's name has been seen recently in the Computer Corner, Sweden Calling DXers Bulletin, QST Magazine and elsewhere for his work on computer control of Yaesu receivers and transceivers. Kjell's original work was done on the TRS-80 Model 100 and published versions of his work are for that computer. The computer corner is pleased to present a version which allows the Commodore 64 to control the FRG-8800.

In addition to the program, Kjell has designed a two transistor plus optocoupler interface that can be used instead of the Yaesu FIF CAT Interface. This interface is ONLY for the Commodore 64. The schematic is included at the end of the program listing. It can be constructed from readily available parts for under \$10.

This program is an experimenter's dream. Depending upon your level of programming skill, you can add anything from a simple database of station schedules held in DATA statements to a tape or disk based database capable of holding thousands of schedules. Your computer can search the database and automatically tune your FRG-8800 to the station of your selection. If you are a moderately skilled programmer, you can integrate Minimuf 3.5, September's featured program, with your database and have the computer select station frequencies based upon propagation data and automatically tune to the best possible listening frequency.

If you wish to see a copy of the original TRS-80 program with a simple database included, you may want to obtain a copy of Kjell's WATSON program. It is available upon request through the Sweden Calling DXers Bulletin, George Wood Editor, Radio Sweden International, S-105 10 Stockholm, Sweden.

```
100 OPEN1,2,0,CHR$(128)+CHR$(0)+CHR$(0)+CHR$(2)
110 GOSUB6000:PRINT"*****"TAB(13)"PRESS ANY KEY."
120 DIM M(100):H=16:DU$=CHR$(0)+CHR$(0)+CHR$(0)
130 REM MATRIX WITH ALL POSS. VALUES FOR HEX/DEC CONVERSION
140 FOR I=0 TO 9:FOR J=0 TO 9:M(I*10+J)=I*H+J:NEXT J:NEXT I
150 GETC$:IFC$=""THEN180
200 REM * INITIALIZE CONTROLS
210 E$="ON":EF=1:EC$=CHR$(0)+CHR$(0)
220 P$="ON":PF=1:PC$=CHR$(254)+CHR$(128)
230 M$="AM-W":MC$=CHR$(0)+CHR$(128):A=6.165:REM R NEDERLAND
300 PRINT"Q":PRINT" *** CAT CONTROL STATUS ***":PRINT
330 PRINT" [E]XTERNAL CONTROL *;E$
340 PRINT" [P]OWER..... *;P$
350 PRINT" [M]ODE..... *;M$
360 PRINT" [F]REQUENCY..... *;A:"MHZ"
370 PRINT" DO YOU WANT TO CHANGE E, P, M OR F, "
380 PRINT" [S]ET ABOVE STATUS OR [Q]UIT?"
390 GETC$:IFC$=""THEN390
400 IFC$="E"THENGOSUB5000
410 IFC$="P"THENGOSUB5100
420 IFC$="M"THENGOSUB5200
430 IFC$="F"THENGOSUB2000
440 IFC$="S"THENGOSUB1000:GOSUB2100
450 IFC$("<")Q"THEN300
460 PRINT"Q":PRINT:PRINT"ARE YOU SURE? (Y/N)"
470 GETC$:IFC$=""THEN470
480 IFC$("<")Y"THEN300
490 PRINT:PRINT"KEEP PRESENT FREQUENCY IN VFO? (Y/N)"
500 GETC$:IFC$=""THEN500
510 IFC$("<")Y"THEN530
520 PRINT#1,CHR$(M(F4))+CHR$(M(F3))+CHR$(M(F2))+CHR$(M(F1))+FC$
530 PRINT#1,DU$;CHR$(128);CHR$(0):CLOSE1:END
1000 REM * SET SUBROUTINE
```

```

1010 PRINT#1,DU$;EC$;PRINT#1,DU$;PC$;PRINT#1,DU$;MC$;GOSUB3000:RETURN
2000 REM * FREQUENCY CONTROL
2010 PRINT"J":PRINT:INPUT"          FREQUENCY MHz":AA:GOSUB7000:IFXQ=1THEN2010
2040 GOSUB3000:RETURN
2100 PRINT"J":PRINTTAB(5):A:"MHz"TAB(26)"MODE"TAB(13)"M]ENU"
2110 PRINT:PRINTTAB(5):RJETUNE"SPC(13)"M]ENU"
2120 PRINT:PRINT:PRINT"[1]100"SPC(8)"FINE TUNING"SPC(8)"100[-]"
2130 PRINTTAB(13):"<< - KHZ + >>"
2140 PRINT" 9 5 1 .1 .025 .025 .1 1 5 9"
2150 PRINT"[2] [3] [4] [5] [6] [7] [8] [9] [0] [-]"
2151 PRINT:PRINT:PRINTTAB(14):"A=AM-WIDE":PRINTTAB(14):"Z=AM-NARROW"
2152 PRINTTAB(14):"S=USB":PRINTTAB(14):"X=LSB"
2153 PRINTTAB(14):"D=CW-WIDE":PRINTTAB(14):"C=CW-NARROW"
2154 PRINTTAB(14):"F=FM-NARROW":PRINTTAB(14):"V=FM-WIDE"
2160 GETC$:IFC$=""THEN2160
2170 IFC$="6"THENAA=A-.000025:GOTO2500
2180 IFC$="7"THENAA=A+.000025:GOTO2500
2190 IFC$="5"THENAA=A-.0001:GOTO2500
2200 IFC$="8"THENAA=A+.0001:GOTO2500
2210 IFC$="4"THENAA=A-.001:GOTO2500
2220 IFC$="9"THENAA=A+.001:GOTO2500
2230 IFC$="3"THENAA=A-.005:GOTO2500
2240 IFC$="0"THENAA=A+.005:GOTO2500
2250 IFC$="2"THENAA=A-.009:GOTO2500
2260 IFC$="-"THENAA=A+.009:GOTO2500
2270 IFC$="1"THENAA=A-.1:GOTO2500
2280 IFC$="."THENAA=A+.1:GOTO2500
2290 IFC$="A"THENGOSUB5500:GOTO2600
2300 IFC$="Z"THENGOSUB5510:GOTO2600
2310 IFC$="X"THENGOSUB5520:GOTO2600
2320 IFC$="S"THENGOSUB5530:GOTO2600
2330 IFC$="D"THENGOSUB5540:GOTO2600
2340 IFC$="C"THENGOSUB5550:GOTO2600
2350 IFC$="V"THENGOSUB5560:GOTO2600
2360 IFC$="F"THENGOSUB5570:GOTO2600
2370 IFC$="R"THEN2700
2380 IFC$="M"THEN3000
2390 GOTO2160
2500 GOSUB7000:IFXQ=1THEN2100
2540 GOSUB3000:GOTO2100
2600 PRINT#1,DU$;MC$:GOTO2100
2700 PRINT"J":TAB(5):"
2710 PRINT"J":TAB(5):INPUTAA$:AA=VAL(LEFT$(AA$,7)):GOSUB7000:IFXQ=1THEN2700
2760 GOSUB3000:GOTO2100
3000 REM * HEX/DEC & FREQ OUTPUT
3010 AS=A+.000012:IF1=INT(A$.1):A1=A-F1*10:F2=INT(A1*10):A1=A1-F2*.1
3060 F3=INT(A1*1000):A1=A1-F3*.001:FA=INT(A1*10000):FB=INT(A1*100000)
3100 REM CALCULATE 2ND NIBBLE FOR BYTE 1
3110 IFFB<25THENFC=1:AR=0:GOTO3150
3120 IFFB<50THENFC=2:AR=.000025:GOTO3150
3130 IFFB<75THENFC=4:AR=.00005:GOTO3150
3140 FC=8:AR=.000075
3150 F4=FA*10+FC:A=INT(AS*10000)*.0001+AR
3210 PRINT#1,CHR$(M(F4))+CHR$(M(F3))+CHR$(M(F2))+CHR$(M(F1))+FC$:RETURN
5000 REM * EXT CTRL SUBROUTINE
5010 IFE$="ON"THENES$="OFF":EF=0:EC$=CHR$(128)+CHR$(0):RETURN
5020 IFE$="OFF"THENES$="ON":EF=1:EC$=CHR$(0)+CHR$(0):RETURN
5100 REM * PWR SUBROUTINE
5110 IFF$="ON"THENP$="OFF":PF=0:PC$=CHR$(255)+CHR$(128):RETURN
5120 IFF$="OFF"THENP$="ON":PF=1:PC$=CHR$(254)+CHR$(128):RETURN
5200 REM * MODE SUBROUTINE
5210 PRINT"J":PRINTTAB(9)"*** MODE SELECTION ***":PRINT
5220 PRINTTAB(14)"[1] AM WIDE":PRINTTAB(14)"[2] AM NARROW"
5230 PRINTTAB(14)"[3] LSB":PRINTTAB(14)"[4] USB"
5240 PRINTTAB(14)"[5] CW WIDE":PRINTTAB(14)"[6] CW NARROW"
5250 PRINTTAB(14)"[7] FM WIDE (OPTIONAL)":PRINTTAB(14)"[8] FM NARROW"

```



## PHANTOM IMITATOR ON SALVADOR RADIO VIEW WITH 'RADIO V'

by Joseph Frazier  
The Associated Press

SAN SALVADOR, El Salvador

- A phantom, almost comical, copy of the rebel Radio Venceremos is crackling through shortwave radios in El Salvador, bringing a very different message to listeners.

Couched in the form and rhetoric of the rebel transmissions, the phantom radio claims to be the guerrilla propaganda program but carries the government line instead.

One recent example: "August 19 at 7 a.m. we ambushed a troop truck in which our military units covered the soldiers with rifle fire, which, oddly, caused no casualties. No doubt our fighters should be better shots."

Its sponsorship is uncertain; its logical backers deny any part of it.

### SOUNDS LIKE REAL 'RADIO V'

For just a minute, the emotional-charged voice, the revolutionary music rising and falling in the background between announcements, and the whiny distortion of the shortwave make the station sound like the real thing.

The real "Radio V," as the rebel station is known in El Salvador, carries frequent claims of guerrilla victories, sabotage and assaults on El Salvador's "puppet dictatorship" and the country's "blood-sucking rich."

The new broadcasts seem in step with the government's fairly new psychological warfare program, which is trying to hobble the left by puncturing rebel morale, encouraging desertions and hampering recruiting.

But the psychological warfare office denies any part, saying it lacks the money and is trying to operate on a basis of credibility that such transmissions would damage.

The bogus station broadcasts only once in awhile, near the shortwave frequency of the real Radio Venceremos, usually at about the same time.

It is being aired more and more often since it first hit the airwaves in early summer.

The most recent campaign has been to warn "fellow" guerrillas operating in the capital to take special precautions because the government is dismantling guerrilla cells.

It lists as an example the arrests of three youths in connection with the June 19 "Pink Zone Massacre" in which 13 people, including four U.S. Marines and two American businessmen, were killed at adjoining outdoor restaurants in the capital.

The real Radio Venceremos apparently operates out of the northeastern province of Morazan, much of which is rebel-controlled, and is meant as much as a troop moral booster as it is for a general audience. It has been on the air for at least four of the six years of the civil war.

Most Salvadorans never hear Radio Venceremos or its imitator. The frequency makes it difficult to pick up on readily available shortwave receivers.

Radio Venceremos makes frequent, sometimes outrageous, claims of major victories over government troops and gives reports of alleged government war crimes.

"Mines on Guazapa, mines in Chalatenango, mines in the north of San Miguel, causing countless casualties to the forces of the dictatorship," one recent Radio Venceremos broadcast said.

The new imitator counters: "The summing up of casualties for the past week is negative for (guerrilla) forces because we caused the government only material damages and eight victims and we, on the other hand, already have suffered the loss of 104 combatants who have entered our long parade of heroes fallen for a cause that is more Cuban and Nicaraguan than Salvadoran."

There's more.

"Attention, much attention," blares the impostor version, using the Latin American way of introducing important news bulletins.

"Our commanders are right in pushing for a third round of peace talks with the government because much more of our peoples' blood is being spilled now that our sabotage of the war economy produces civilian victims despite our efforts to prevent it."

The message appears aimed at rank-and-file rebels, most of whom were recruited from El Salvador's very poor.

---

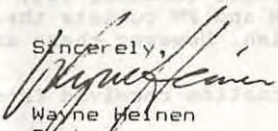
This letter is to introduce our new group to you and enlist your aid in helping us grow. As we all know, the best way to reach SWL's and DX'ers is through the programs and publications that they are interested in. While our local efforts through SW equipment outlets have supplied us with new recruits, we feel YOUR help would be very valuable.

Rocky Mountain Radio Listeners is a NON club. No dues, No real rules, just a name that we'll use to schedule area get-togethers in our region. A one page newsletter which is sponsored by Allied Appliance & Radio, a local retailer of SW gear that's owned by SWL's, will go out in time to inform those on our mailing list of get-togethers. Interested radio listeners located within driving distance of Metro Denver may obtain more information by writing Wayne Heinen, 4131 S. Andes Way, Aurora, CO 80013. or Rodney J. Johnson Jr., 1265 Downing St. Apt 408, Denver, CO 80218

I, and the current participants, truly appreciate your help in spreading the word through the hobby. The more people we can find to join us, the more fun we'll have!

Thank you for your assistance.

Sincerely,



Wayne Heinen  
Spokesman  
Rocky Mountain Radio  
Listeners

DX Target: Guyana  
A Look At The Country And Its Broadcasting Activities  
By

Richard A. D'Angelo

---

This independent member of the Commonwealth of Nations is located on the northeast coast of South America. Its area is 215,000 square kilometers and its seaboard extends about 370 kilometers. Neighbors include Brazil to the south, Venezuela to the west and Surinam to the east.

CLIMATE

The climatic characteristics of this equatorial lowland country consist of high temperatures, heavy rainfall with relatively small seasonal differences, high humidity, and average cloud cover. The temperatures are remarkably uniform. At Georgetown, the capital, the average monthly temperature varies from 26 to 28 C. The effects of constant heat and humidity are mitigated near the coast by the northeast trade winds.

HISTORY

Sighted by Columbus in 1498 this area was unattractive to the Spanish and Portuguese because of the lack of gold and the difficulties of movement. The Guiana coast was left to the Dutch, French and English. In 1831 the colony of British Guiana was established. Independence was achieved in May 1966 under the leadership of Forbes Burnham under the new name of Guyana.

ECONOMY

Income is derived mainly from two resources: sugar and bauxite. Aside from sugar refining and the production of alumina from bauxite, industrial activity is light. Petroleum products, machinery, textiles and other manufactured goods must be imported.

PEOPLE

Slightly over half of the people of Guyana are East Indians whose ancestors were brought from India to work on plantations. Most of them live in rural areas. About 40% are blacks whose ancestors were brought from Africa as slaves. The rest of the people are Amerindians, Europeans and Chinese.

English is Guyana's official language. However, most of the people speak a local language, Creolese, a common language based on the local languages, is widely used for communication between groups. Hindi and Urdu are widely used by Guyana's East Indians.

BROADCASTING

All broadcasting activities in Guyana are controlled by the government through the Guyana Broadcasting Corporation (GBC). The GBC provides programs through two channels. The General Service (Channel One) is carried in Georgetown on AM and FM while the Regional Service (Channel Two) is carried on shortwave and the remaining AM and FM outlets throughout the country. Most programs are in English. However there are some Arabic and Hindi language programs.

Recent information received from the GBC indicates two active

shortwave frequencies- 3,290 kHz and 5,950 kHz - with a power of 10 KW. However, the WRTH through 1983 listed 3,290 kHz as inactive and dropped this listing from subsequent editions. Supporting the deletion of 3,290 kHz is the absence of loggings in the shortwave press for this frequency.

The 5,950 kHz channel is frequently reported. It is intended for listeners in the interior of Guyana not served by the medium wave outlets. Using 10 KW into vertical incident aerial arrays, this frequency provides best reception in North America in the early morning hours, i.e. 0800 GMT/UTC. Occasionally, they will stay on late for special events. One such occasion was the passing of President Forbes Burnham in August. The GBC stayed on past 0540 GMT/UTC with sympathy announcements from friends, family and business associations.

In general, broadcast hours are from 0800 to 0200 GMT/UTC for Channel One, which uses the Georgetown outlets on 760 kHz (10 KW) and 100 MHz (250 watts). The Channel Two program is broadcast from 0730-0300 GMT/UTC on 5,950 kHz and on two Georgetown frequencies- 560 kHz (10 KW) and 102 MHz (100 watts). In addition, the 700 kHz (10 KW) frequency in Linden carries Channel Two. The 1010 kHz (Tumatumari) and 104 MHz (Linden) frequencies listed in the WRTH'85 are presumably inactive.

The GBC QSL's by letter from its Chief Engineer L.R.E. (Ron) Case. Use either Gerry Dexters QSL Address Book- Box 561, the WRTH's- Box 10760 or from the stations literature- Box 10770, all in Georgetown. Tune in Guyana and enjoy the Early Bird Program featuring musical requests, Hindi music, greetings and birthday wishes to listeners, time checks, obituaries, local news items and colorful advertisements. This DX Target provides some interesting listening.

---

#### NASWA NOTES

Dr. Allan L. Courtney calls attention to a computer BBS in Lexington, KY dedicated to SWL's and ARO's called Radio Free Lexington. If any members are interested in caling this BBS, the number is (606) 277-9519. The BBS is online from 5:30 a.m. until 11:30 p.m. at which time it becomes a public domain software exchange only. The sysop is Dave Jackson. Dr. Courtney also mentions that George Wood has started to uploading transcripts of Sweden Calling DXers to the HamNet forum on CompuServe. These transcripts are available every Tuesday night in Data Library 3.

A new shortwave and electronics equipment catalog is available from Allied Appliance and Radio (the Rocky Mountain Shortwave Specialists), 4253 South Broadway, Englewood, CO 80110. Price is US\$1.00.

The October Garage Sale List from Radio West features the new Schottky Diode Replacement for your receiver's AM detector. Rw says the change is unbelievable. Write to Radio West at 3417 Purer Road, Escondido, CA 92025 for the flier and to get on the mailing list for others. The phone number is (619) 741-2891.

## THE CALCULATING SWL -- II

It is a familiar problem: you find yourself hopelessly drawn to the 120mb in an effort to pursue some exotic DX. You live, however, in suburbia on a lot that is a mere 100'x100': the longest antenna you could put up would be about 140' but you need around 200' for a half-wave dipole. Worse, some wretched arboriphile has thoughtlessly littered the place thickly about with great whacking elms, oaks, flowering cherries and weeping willows. All very nice, no doubt, for the local fauna and juvenile tree-climbers, but by your best calculations you figure that you can mount a mere 100' of antenna. What to do?

The solution is to lengthen the antenna electrically by loading both arms of the dipole, symmetrically, with inductances (i.e., coils) positioned at the correct points on the arms. The equation given here will calculate the necessary inductances given the overall length of the antenna and the distance from the center of the antenna at which the coils are to be placed, both of which lengths are up to you.

First, let's define some independent and intermediate variables:

A = the overall length of the antenna, in feet  
B = distance from center at which coils are to be placed, in feet  
f = frequency at which antenna is expected to operate, MHz  
d = diameter of wire used, in inches  
z =  $234/f$   
x =  $(A/2) - B$   
y = z - B  
w =  $24/d$

T =  $([\ln(wy) - 1][(y/z)^2 - 1])/y$   
U =  $([\ln(wx) - 1][(x/z)^2 - 1])/x$

L =  $1490[T - U]/f^2$  (micro-Henries)

Be sure that the length 'A' is less than that for the corresponding full-length dipole for the given frequency. Although not immediately apparent from the equation, note that the required inductances decrease as they are placed nearer to the center of the antenna, and increase toward the ends.

Let's return to our original problem to conquer the arboriphiles and overcrowding in suburbia:

A = 100'  
B = 15' 8" (-15.67') (Just a wild guess)  
f = 2.3 MHz (This gives us a little for pruning, if needed.)  
d = 0.10"  
z = 101.74; x = 34.33; y = 86.07; w = 240

T = -0.02951  
U = -0.20691

L = 49.97 (round this to 50) micro-Henries

Voilà

Stephen G. Moye  
178 Bartlett Avenue  
Cranston, RI 02905

Compiled by Roger Legge, Box 108, Arlington, VA 22210

Deduct 1 hour from EST to convert to CST. M-F refers to EST days. Some announced frequencies omitted due to poor reception. \* - Not intended for NA, but receivable.

## MORNING

EST	UTC	Station	Frequencies (Khz)
5:30-6:25am	1030-1125	Hilversum, Holland	6020b, 9650b
6:00-7:00am	1100-1200	Moscow, USSR	6115h
		Peking, China	9820
6:00-8:30am	1100-1330	London, England	5965c, 6195w, 11775w, 15070
6:00-9:00am	1100-1400	Melbourne, Australia	5995, 6060, 9580
6:15-7:55am	1115-1255	TWR, Bonaire, NWI	11815
7:00-7:30am	1200-1230	Helsinki, Finland (M-F)	15400, 11945
7:00-8:00am	1200-1300	Buenos Aires, Argentina	15345
		Moscow, USSR	6115h, 13705, 15475
		Peking, China	6160, 9820
7:00-10:30am	1200-1530	HCJB, Quito, Ecuador	15115, 17890, 11740 (to 1430)
7:30-8:00am	1230-1300	Vienna, Austria (Su: 1200-1300)	15320
7:35-7:45am	1235-1245	Athens, Greece	11645, 15630, 17565
8:00-8:25am	1300-1325	Montreal, Canada (M-F)	9650, 11955
8:00-8:30am	1300-1330	Helsinki, Finland (not Su.)	15400, 11945
8:00-8:30am Su	1300-1330 Su	Oslo, Norway	15305
8:00-8:55am	1300-1355	Brussels, Belgium (not Su.)	15590
8:00am-12n	1300-1700	Moscow, USSR	11840 (1330-), 13705, 15475
9:00-9:30am	1400-1430	Helsinki, Finland	15400, 11945
		Stockholm, Sweden	15345
9:00-9:30am Su	1400-1430 Su	Oslo, Norway	15305
9:00am-12n Su	1400-1700 Su	Montreal, Canada	11955
10:00-10:30am	1500-1530	Helsinki, Finland	15400
11:00-11:30am Su	1600-1630 Su	Oslo, Norway	15305
11:00am-12n	1600-1700	*Paris, France	17620, 15425 (Paris Calling Africa)
11:00am-12:45pm	1600-1745	London, England (Sa/Su 1500-)	9515c, 15070, 15260c

## AFTERNOON

12:00-12:30pm Su	1700-1730 Su	Oslo, Norway	11850
12:00-2:00pm	1700-1900	Moscow, USSR	9765, 11840h, 11860
2:00-2:30pm Su	1900-1930 Su	Oslo, Norway	9525
2:00-5:00pm	1900-2200	Moscow, USSR	5980, 7290, 9765, 11840h
3:00-3:30pm	2000-2030	Jerusalem, Israel	7410, 9435, 9815
3:10-4:40pm	2010-2140	*Havana, Cuba	11795
4:30-5:00pm	2130-2200	*Sofia, Bulgaria	7115

## EVENING

5:00-5:50pm	2200-2250	Tripoli, Libya	11815
5:00-6:00pm	2200-2300	London, England	5975, 6175w, 7325, 9915
		Moscow, USSR	5910, 5980, 7115, 7150, 7290
5:30-6:00pm	2230-2300	Jerusalem, Israel	7410, 9435, 9815
5:30-6:30pm	2230-2330	Sofia, Bulgaria	6070, 9700
6:00-6:30pm	2300-2330	Montreal, Canada	9755, 11710
		Stockholm, Sweden	6045, 9695
		Vilnius, Lith. SSR	7400, 9685
6:00-7:00pm	2300-0000	Ankara, Turkey	9560, 7215
6:00-7:30pm	2300-0030	London, England	5975, 6120c, 6175w, 7325, 9590c, 9915
6:00-8:30pm	2300-0130	Moscow, USSR	5910, 5980, 6000h (from 00), 6020, 6090, 6130, 7115, 7150, 7215, 7290
6:05-6:55pm	2305-2355	Warsaw, Poland	7270, 7125 (Concert)
6:15-7:00pm	2315-0000	*Berlin, DDR	6125, 6165

EST	UTC		
7:00-7:30pm	0000-0030	Jerusalem, Israel	5900, 7410, 9435
		Montreal, Canada	5960, 11850
		Tirana, Albania	7065, 9760
7:00-7:30pm Su	0000-0030 Mo	Oslo, Norway	6030
7:00-8:00pm	0000-0100	Havana, Cuba	6100, 9740
		Peking, China	9880, 11860
		Sofia, Bulgaria	6070, 9700
7:00-9:00pm	0000-0200	Madrid, Spain	6125, 9630
7:00-11:00pm	0000-0400	*VOA, Washington, USA	5995, 6130, 9455, 9650, 11580, 11675, 11740 (to 0200)
7:15-8:00pm	0015-0100	Berlin, DDR	6080, 9730
7:15-8:15pm	0015-0115	Tokyo, Japan	15300
7:30-8:00pm	0030-0100	Kiev, Ukr.SSR	7400, 9685
		Lisbon, Portugal	6095, 9680
		Montreal, Canada	5960, 9755 (As It Happens, M-F)
7:30-8:25pm	0030-0125	Brussels, Belgium	5910
7:30-9:00pm	0030-0200	HCJB, Quito, Ecuador	9745, 15155
7:30-9:30pm	0030-0230	London, England	5975, 6120c, 6175w, 7325
7:50-8:05pm	0050-0105	Vatican City	6015, 9605, 11845
8:00-8:20pm	0100-0120	Rome, Italy	5990, 9575
8:00-8:30pm	0100-0130	Jerusalem, Israel	5900, 7410, 9435
		Montreal, Canada	5960, 9755
8:00-8:45pm	0100-0145	Berlin, DDR	6080, 9730
8:00-8:50pm	0100-0150	Cologne, W.Germany	6040w, 6085m, 6145, 9545w, 9565m
8:00-9:00pm	0100-0200	Buenos Aires, Argentina	9690, 11710
		Managua, Nicaragua	6015
		Prague, Czechoslovakia	5930, 7345, 9540, 9740
8:00-10:00pm	0100-0300	Havana, Cuba	6100, 6140, 9740
8:30-8:40pm	0130-0140	Athens, Greece	7395, 9420, 11645
8:30-9:00pm	0130-0200	Tirana, Albania	7120, 9760
		Vienna, Austria	6000, 9635
8:30-9:25pm	0130-0225	Hilversum, Holland	6020, 9895
8:30-10:00pm	0130-0300	Moscow, USSR	5980, 6000h, 6020, 6070, 6090, 6130, 7115, 7150, 7215, 7290
9:00-9:30m	0200-0230	Berne, Switzerland	6135, 9725, 9885
		Budapest, Hungary (not Su.)	6025, 6110, 9520, 9835
		Jerusalem, Israel	5900, 7410, 9435
		Montreal, Canada	5960, 9755
9:00-10:00pm	0200-0300	Brasilia, Brazil	11745
		Bucharest, Romania	5990, 9510, 9570
		Johannesburg, South Africa	5980, 6010, 9615
9:00-10:30pm	0200-0330	Cairo, Egypt	6175, 9475
9:00-11:00pm	0200-0400	Taipei, Taiwan (via WYFR)	5985, 6065
		Warsaw, Poland	7270, 9525
9:00pm-12mdt	0200-0500	HCJB, Quito, Ecuador	6095, 9745
9:30-10:00pm	0230-0300	Montreal, Canada (M-F)	5960, 9755 (As It Happens)
		Tirana, Albania	7120, 9760
9:30-10:15pm	0230-0315	Berlin, DDR	6080, 9730
9:30-10:30pm	0230-0330	Hilversum, Holland	6165b, 9590b
9:30-11:30pm	0230-0430	London, England	5975, 6120c, 6175w, 7325
10:00-10:30pm	0300-0330	Budapest, Hungary	6025, 6110, 9520, 9835
		Kiev, Ukr.SSR	6020, 6090, 7290
		Lisbon, Portugal	6075, 9565
		Montreal, Canada (M-F)	5960, 9755
10:00-11:00pm	0300-0400	Moscow, USSR	5980, 6000h, 6070, 6130, 7115, 7150
		Prague, Czechoslovakia	5930, 7345, 9540, 9740
10:00-11:50pm	0300-0450	Havana, Cuba	6100, 6140, 9740, 6090 (from 0330)
10:15-10:30pm	0315-0330	*Paris, France	6055gu, 9800gu
10:30-11:00pm	0330-0400	Dubai, UAE	7310, 9565, 11730
		Vienna, Austria	6000
11:00-11:30pm	0400-0430	Berne, Switzerland	6135, 9725
		Montreal, Canada	5960, 9755
11:00pm-12mdt	0400-0500	Managua, Nicaragua	6015
		Ankara, Turkey	9560, 7215
		Sofia, Bulgaria	7115
11:00pm-1:00am	0400-0600	Moscow, USSR	5980, 6000h, 6130, 7150

Add 1 hour to PST to convert to MST. M-F refers to PST days.

## MORNING

PST	UTC		
6:00-6:30am	1400-1430	Stockholm, Sweden	9695
6:00-7:00am	1400-1500	Seoul, So. Korea	9750, 15575
6:00-9:00am	1400-1700	Melbourne, Australia	5995, 6060, 9580
		Moscow, USSR (via Khab.)	5900, 7150, 7175, 7290
7:00-7:30am	1500-1530	Helsinki, Finland	15400
7:00-8:00am	1500-1600	Tokyo, Japan	9505
8:00-8:30am Su	1600-1630 Su	Oslo, Norway	9590, 11860
8:00-9:45am	1600-1745	London, England (Sa/Su 1500-)	9515c, 9750s, 11750s, 15250c
9:00-9:30am	1700-1730	Tokyo, Japan	9505
9:00-9:30am Su	1700-1730 Su	Oslo, Norway	9590
9:00am-12n	1700-2000	Moscow, USSR (via Khab.)	7175, 7290, 9795, 11790

## AFTERNOON

12:00-5:00pm	2000-0100	Moscow, USSR (via Khab.)	12050, 15140, 15425, 15455, 17700
1:40-2:40pm	2140-2240	Taipei, Taiwan	11825, 15270, 15345
2:00-5:00pm	2200-0100	Melbourne, Australia	15320, 15395, 17795
3:00-3:30pm	2300-2330	Vilnius, Lithuanian SSR (via Khab.)	11790, 13605, 15240
3:00-4:00pm	2300-0000	Tokyo, Japan	17755
3:00-4:50pm	2300-0050	Pyongyang, No. Korea	15230, 9745
4:00-6:00pm	0000-0200	Madrid, Spain	6125, 9630
4:30-5:00pm	0030-0100	Kiev, Ukr. SSR (via Khab.)	11790, 13605, 15240
4:50-5:05pm	0050-0105	Vatican City	6015, 9605, 11845

## EVENING

5:00-5:30pm	0100-0130	Tokyo, Japan	17755
5:00-6:00pm	0100-0200	Buenos Aires, Argentina	9690, 11710
		HCJB, Quito, Ecuador	9745, 15155
		Taipei, Taiwan	11825
5:00-6:30pm	0100-0230	London, England	6120c, 6175w, 9515gr, 11750a
5:00-7:00pm	0100-0300	Havana, Cuba	6100, 6140, 9740
5:00-8:00pm	0100-0400	Moscow, USSR (via Khab.)	12050, 15140, 15425, 15455, 17700 (to 02)
6:00-6:30pm	0200-0230	Budapest, Hungary (not Su.)	6025, 6110, 9520, 9835
		Montreal, Canada (M-F)	5960, 9755
6:00-7:00pm	0200-0300	Brasilia, Brazil	11745
		Johannesburg, South Africa	5980, 6015, 9615
		Seoul, So. Korea	11810, 15575
		Tokyo, Japan	15195, 17825
6:00-9:00pm	0200-0500	HCJB, Quito, Ecuador	6095, 9745
6:30-7:00pm	0230-0300	Montreal, Canada (M-F)	5960, 9755 (As It Happens)
6:30-7:30pm	0230-0330	Hilversum, Holland	6165b, 9590b
7:00-7:30pm	0300-0330	Budapest, Hungary	6025, 6110, 9520, 9835
		Kiev, Ukr. SSR (via Khab.)	11790, 13605, 15240
		Lisbon, Portugal	6075, 9565
		Montreal, Canada (M-F)	5960, 9755
		Tokyo, Japan	17755
7:00-7:50pm	0300-0350	Taipei, Taiwan	11825, 15345
7:00-9:00pm	0300-0400	Peking, China	9880, 11860
7:00-8:50pm	0300-0450	Havana, Cuba	6100, 6140, 9740, 6090 (from 0330)
7:15-7:30pm	0315-0330	*Paris, France	6055gu, 9600gu
7:30-8:15pm	0330-0415	Berlin, DDR	6080, 9560
7:30-8:30pm	0330-0430	London, England	5975, 6120c, 6175w
		Seoul, So. Korea	9570
7:40-7:50pm	0340-0350	Athens, Greece	7395, 9420, 11645
7:55-8:00pm	0355-0400	Yerevan, Arm. SSR (via Khab.)	11790, 13605, 15240

PST	UTC		
8:00-8:30pm	0400-0430	Berne, Switzerland	6135, 9725, 12035
		Montreal, Canada	5960, 9755
		Stockholm, Sweden	9695
8:00-8:40pm	0400-0440	TWR, Bonaire, NWI	9535
8:00-9:00pm	0400-0500	Ankara, Turkey	9560, 7215
		Managua, Nicaragua	6015
		Sofia, Bulgaria	7115
		Moscow, USSR (via Khab.)	5900, 7250, 11790, 12050
8:30-9:00pm	0430-0500	Vienna, Austria	6000
8:30-11:30pm	0430-0730	London, England	6175w, 9510w
9:00-9:15pm	0500-0515	Jerusalem, Israel	7410, 9009, 9435
9:00-9:50pm	0500-0550	Cologne, W. Germany	5960, 6120w, 6130, 9545m, 9690, 11705w
9:00-10:00pm	0500-0600	Madrid, Spain	5970, 6125, 9631
		Tokyo, Japan	11950
9:00-11:00pm	0500-0700	HCJB, Quito, Ecuador	6095, 9745, 11910
9:00pm-12mdt	0500-0800	Moscow, USSR (via Khab.)	5900, 6070, 6150, 7260, 7290, 7340
9:30-10:25pm	0530-0625	Hilversum, Holland	6165b, 9715b
10:10-11:15pm	0610-0710	Taipei, Taiwan (via WYFR)	5985
10:30-11:15pm	0630-0715	Berlin, DDR	6080, 9560
10:30-12mdt	0630-0800	Havana, Cuba	9525
11:00pm-12mdt	0700-0800	Tokyo, Japan	11950

Relay stations: a - Ascension, b - Bonaire, NWI, c - Canada (Sackville), gr - Greenville, USA, gu - French Guiana, h - Havana, m - Malta, s - Singapore, w - West Indies (Antigua).

#### Significant Changes:

CANADA: All NA broadcasts moved 1 hour later UTC to remain at the same clock time in the USA after return to Standard Time.

CUBA: New 6100 and 9740 frequencies ~~same as~~ used by IFRB as 250 kw, so these are new transmitters, first in Cuba over 100 kw.

EGYPT: Tentative schedule lists 6175 for 0200-0330 Program. A 6 mhz frequency is needed but BBC Ascension is on 6175.

FINLAND: 11945 replaced 17800 at 1200-1500

ITALY: 5990 replaced 6010 at 2230-0135, including 0100-0120 English.

NORWAY: Frequency changes on Sunday program: To E.NA, at 1600 on 15305 (new), 1700 on 11850 (ex-15310), 1900 on 9525 (ex-11850), 0000 on 6030 (new). To W.NA: 1600 on 9590 & 11860 (ex-11850), 1700 on 9590 (new).

PORTUGAL: Tentative schedule lists 0300 replacement of 6090 (Cuba there) by 6075 (Ascension here).

SWEDEN: To W.NA, 0230 dropped, replaced by 0400 on 9695. Added a W.NA frequency on the morning broadcast, 1400 on 9695. To E.NA, 6045 at 2300, replacing 11705.

USSR: Radio Moscow made substantial moves to the 6 mhz band on both the E.NA & W.NA Services.

## NEWS RELEASE

GILFER ASSOCIATES, INC.

52 Park Avenue, P. O. Box 239, Park Ridge, N. J. 07656 (Area Code 201 391-7887)

### ANNUAL PRE-PUBLICATION OFFER

Park Ridge, N.J. GILFER is pleased to announce that the WORLD RADIO TV HANDBOOK will be available again this year through GILFER SHORTWAVE with big savings for club members.

The 40th Anniversary Edition of the WRH will be available earlier this year and it will contain more up-to-date listings of frequencies, times, schedules and special articles and news about shortwave.

The WRH — regular price \$19.95 — will be sold at \$15.95.  
A SAVING of \$4.00 over the regular price.



# Listeners Notebook

GLENN HAUSER, Box 490756, Ft Lauderdale FL 33349

**PROPER CREDIT** Other publications and broadcasters may use material from LN, provided due credit be rendered to the original reporter and the NASWA Listeners Notebook. This courtesy does not extend to closed organizations which do not allow reciprocal access to their publication. The most important items have been broadcast immediately on WRNO WORLD OF RADIO or RCI SWL DIGEST, not otherwise mentioned herein. All contributions to LN are gratefully received, but your editor cannot promise a personal reply because of severe time constraints. Material for LN should be marked as such each time (not just on the envelope), as input for other outlets also comes to Box 490756. Reports to gh should not be cut into little strips. It also helps if you use one side of paper only, and do not mix LN items with other correspondence. All times, dates and days are day/month GMT = UTC, uos. Please do not ask me for advice on receivers or other equipment. Thanks (gh)

**A F G H A N I S T A N** R Afgh via USSR on 14220, 3 x 4740, 10/7 0125 34543, & has been hrd for about a year now (Victor Goonetilleke, Sri Lanka, Aug DSWCI)

**A L B A N I A** R Shqiptar/Shqipter harmonics of 5020 hrd 27/8 1629 on 10040, QRM Vietnam, SINPO 32332, and on 20080 at 0940 28/8, 23322 (Frank Baste, France, Oct DSWCI SWN)

**A U S T R A L I A** RA's "Talkback" continues to be hrd Sats 1610 on 9580; F sig 28/9 in NW Ont, but should be much better in WNA. What are other times? (Ernie Behr) Sun 0210, 0810, 1430, 2130 (gh)

**A Z E R B A I J A N** R Moscow FS in Farsi via Baku 10/9 1653-1700\* 25332 on 18330, 6110 x 3 (Manfred Petschick, W Germany, Oct DSWCI SW News)

**B E L G I U M** RTBF on new 9900 in FR 2055 ex-17675 29/9, and side QRM from BRT on adjacent 9905! (Bob Padula, Oct Australian DX News)

**B O T S W A N A** R Botswana hrd 18/9 0450 on 4820 w/M rambling on and on in lang; arnd 0500 covered w/HRVC in Honduras signing on [? -gh], and also QRM'd by SP numbers stn also s/on using 4825, "Atención 451-130". Botswana again in EG 9/10 w/pgm on malnutrition and hrd EG ID 0400 10/10, E sigs here on west coast (Dave Mosier, San José CA)

**B R A Z I L** R Nacional, Macapá, 4915, verified w/card in EG, pgm info, personal letter for a report sent in Feb 83. Letter came airmail w/231,000 value in stamps; also incl some Braz stmsps, and the report was verified from the Manaus office of Radio Braz. V/s Eudson Monteiro Lima, Auxiliary Secretary. Addr is Caixa Postal 29 29, CEP 69000 Manaus, Amazonas (Arthur T Cushen, MBE, Aug NZ DX Times)

R Nacional de Porto Velho, 4945, hrd 28/9 w/new eve bc in PT, 0300-0339\*v, full ID, strong over HJ & CP QRM; in past was noted only from 0900 (Behr Ont)  
R Guarani is active w/10 kW on 6171 (A Ribeiro da Motta, Play-DX 23/9)

**C A M E R O O N** R Cameroun, 9355, from 2100 EG nx, 2200 FR nx, mx & NA to 2401\*; G 28/9, but often v/ weak mod; ex-9745 (Ernie Behr, Kenora Ont)

**C A N A D A** D85 sked for RCI SWL Digest: Sat 1935 on 17875 15325 11945, and via Daventry 5995 7235; 2135 on 17820 15325 15150 11960 11945; Sun 2305 on 9755 11710; GMT Mon 0405 on 5960, 9755 (gh)

C O L O M B I A [Cf June LN] As to R Lux, in Honduras I noted it in May 84 w/anmts as being from Guachucal. No sign of the stn in more recent visits to Ecuador (Don Moore, Garnavillo IA)

Rdif Nacional noted back on 11793 since 11/9, at 2230-0130 in SP, but vy weak mod (Ernie Behr, Kenora Ont)

Ondas del Meta, 4885, v/s is Germán Castañeda, técnico. Reports should be sent directly to him, because the stn director will not reply. Addr is A.A. 3104, Villavicencio (DSWCI via Play-DX 23/9)

C O O K I S L A N D S R Cook Islds has apparently left 11760v; not hrd since 3/9, not even the usual het arnd 0300-0500 (Ernie Behr, Ont)

Fair 25/8 to 0800\* on 11759.5, variety pgm of EG & Maori reqs (Leigh Morris, Morphett Vale, South Australia, Sept NZDXT)

C O S T A R I C A R Impacto back on 6139.9a since late Sept & still there as of 7/10, QRMing VOA morns & RHC eves (John Wilkins, CO)

But not for long; by mid Oct was on 6160, instead, and still at \*1100 23/10 --strange how they avoid their relatively clear assigned fq, isn't it? I am forced to suspect that R Impacto doesn't really want to be hrd well beyond its prime target, Nicaragua, where perhaps w/increased power it can override QRM

R Reloj welcomes reports in English, but don't send tapes, as they (gh) have to pay ridiculous amounts in customs in order to get delivery. (Stig Hartvig Nielsen, Denmark, DX-Fokus, via Oct DSWCI SWN)

R Nacional was on 6035 w/2 kW until the beginning of 1984, but this was closed due to bad reception in the area. As of Jan 1985 they had no plans of reactivating the SW xmtrs (ibid.)

Contrary to R Reloj, R Columbia, 4850 resides in very modern surroundings in outer San José. They have had 450m<sup>2</sup> at their disposal for more than a year after moving from premises on the first floor of a house in the main street in San José. Most CR stns are normally being characterized as rightwing, but R Columbia is the most extreme, heading the bc war against the socialist neighbour to the north, Nicaragua. It is said this 'war' is financed by funds coming from the USA. R Columbia has installed several MW xmtrs and a powerful SW xmtr near the Nicaraguan border--20 kW in Puntarenas. Pgms are very varied --20% news and sports, but also radio novelas, educational pgms, etc. to farmers, scientific pgms and música tropical (ibid.)

C U B A A serious situation, which could destroy the SW hobby in NAM: RHC keeps polluting the SW bands w/faulty xmtrs, spurs & various noises, perhaps in a deliberate attempt to drown out all other stns. They have, in effect, ruined most of the 31 & 49mb with their new super-power monsters on 9740 & 6100, which must be running a full 500 kW, pinning the S-meter on most receivers. The extremely wide & dirty signals are often splattered over 25 kHz, wiping out all adjacent channels. In addition, 9740 often puts out a horrific buzzing noise, which obliterates most of the 31mb. On 22/9 the buzz totally covered the following segments: 9425-9465, 9555-9575, 9805-9825, 9925-9965, but it varies from day to day.

The mess on 49m is even worse, with no less than 6 Cuban xmtrs running simultaneously: EG on 6090 6100 6140, SP on 6020 & 6060, and the RM relay on 6170, not to mention numerous spurs & xmtr noises which appear at various times. Since May 1985 Cuban interference, deliberate or otherwise, has become the greatest threat to SW listening, far more serious than the Soviet "woodpecker", which is getting all the attention. This type of banditry can no longer be ignored, and a strong protest should be organized against RHC, condemning their abuse of the SW spectrum (Ernie Behr, Kenora Ont)

Mayak R putting ugly spurs on 1/10 on 4776v and 4757v. Strange pulsating xmtns, alternating betw the fqs approx e.o.s. [guess: every other second?]. These two fqs strong, but fund 4765v vy weak. Also on 30/9, spurs noted on 4718v, 4742v, 4694v (John Wilkins, Wheat Ridge CO)

C Y P R U S NF for weekend svc in GK for UK, \*2210-2245\* 13/9 on 6190 // 7140 & 9635--IDS, GK ID & anmts for fq 2215, then GK nx & mx (Bob Padula, ADXN) CBC

R Bayrak is on 6147; EG nx at 1630 during summer time; strong QRM from 6145 starting at 1615; ID is "This is R Bayrak, the Voice of the Turkish Republic of Northern Cyprus" (Marcel Rommerts, Crete, Sept DSWCI SWN) also 1115 (Oct ")

C H I L E R Nacional on 15140 has become v/ irreg since early Sept, only brief 1 or 2 hr xmsns at irreg times, often absent for days; unable to hear ancd anniv bc from R Manu Kena 17/9, since 15140 was on air only 1730-1900 & 2300-2430 (Ernie Behr, Kenora Ont, 7/10)

E C U A D O R Per DXPL 18/9, HCJB is considering changing one or both of its NAM fqs (in order to escape the CubaRM) and is requesting listener input on possible clear fqs in the 31 & 49mbs that they could go to. HCJB on 9745 is actually stronger than Havana on 9740 some nights, but not often enough (John Norfolk, Oklahoma City OK) HCJB now using 9870 ex-9745 first noted 9/10 0230 (Dave Mosier, San José CA) Still on // 6095 the last I checked (gh)

R Federación Shuar, 4960, 6/10 0046-0159\*, running an hour later than usual (Bernhard Gröndl & M Petri, Play-DX)

E Q U A T O R I A L G U I N E A R Bata foreign svc 15110 'Gospel Hour' sent stencil & stuff in 19 days; v/s Perry F Rockwood, Pastor. Addr: Box 1600, Halifax NS B3J 3A1, Canada; no IRCs sent (Silverio Gómez, Spain, Play-DX 14/10) Relig pgms in EG 2040-apx 2130 & SP 2130-2200 on 15106.2; addr: Apostel Work New Orleans, P O Box 5672, New Orleans 70156 (gh on RCI via Wolfgang Büschel, GFR, Aug DSWCI SWN) Strange, I don't recall reporting any such thing about New Orleans in connexion w/this stn (gh)

R Bata, 5003.7, 13/10 0605-0631 in SP: during the entire period there was nothing but the same man talking; seemed to be nx at first; arnd 0615 partial ID as "...nacional...31...Radio Bata..." The big problem trying to catch an ID or anything else was splatter from WWV; overall, poor (Chuck Bolland, FL)

G U Y A N A GBC is again inactive on 5950 (Ravin G Sewdien, Surinam, Aug SWN)

H A I T I [Cf Sept LN] R Citadelle is in Cap-Haïtien, not in Port-au-Prince --WRTH still carries this and many other mistakes in their Haitian listing, in spite of my telling them about it. (By the way, the Citadelle is a fort built by Henri-Christophe precisely to protect Cap-Haïtien. It is located not far from the city. I went to visit it for the first time last May.) (Victor C Jaar, Charlesbourg Quebec, 29/9)

I C E L A N D ISBS hrd on new 9957.2 USB, at 1900 & 2300-2345A in IC, not 2305\* as before, fair 3/10, but often under ute (Ernie Behr, Kenora Ont)

On 1/8, the ISBS changed SW svc to: 13797: 1215-1245 NEU, 1245-1315 UK & WEU, 1315-1345 ENAm; on 9957: 1855-1935/45 to NEU; 1935-2015/25 to UK/WEU. On 12112.5 23-2340 to ENAm (Jon V Sigurdsson, Iceland, Sept SWN) That last fq apparently changed to 9957 too (gh)

I N D O N E S I A I heard on RCI 29/9 that Craig Seager says RRI Pekanbaru leaves 5885 at 1300; my obs show it either s/off at 1402 now or moves to 5895 at that hour, but I think another RRI stn is on 5895; there is a ute on 5895, and I don't know Indonesian, so it's hard to tell (Bruce MacGibbon, Gresham OR)

Fire has destroyed the main studio at the Jakarta HQ of RRI, the country's natl bcng svc. Studio five, part of a multistory complex, was RRI's most modern & expensive. It was used for bcng natl nx bulletins and also contained an auditorium for orchestras. Official govt sources have confirmed that one person died and one was injured in the fire which began at 8 o'clock last night local time. The cause of the fire is not yet known (RA nx 21/7, NZDXT)

By Sept 1986, RRI plans to have in operation an addl 250 kW SW xmtr at Padang, to augment coverage into Pac, SEAs (Jakarta Post 7/9 via Graham Shaw, ADXN)

I T A L Y R Spoleto Int'l operates 24h on 7140; addr Piazza Garibaldi 17, 06049 Spoleto (PG), Italy (Play-DX 15/9)

R Calabria Int'l, 13630, QSL in 19 days from v/s Vincenzo Naymo, Direttore Tecnico, Via Paolo Sarpi 23, 89042 Ciojosa Jonica. Had sent 450 lire in stamps and a C15 cassette which was returned w/pgm recorded in studio (Carlo Pepe, Play-DX 15/9) RCI, 13630 operates regularly 1230-1330; from 1/18 // or alternatively on 7615 at 09-1030 & 1230-1330 daily!!! (A Napolitano via N Naymo, R Calabria Int'l, Play-DX 23/9)

R Time, 7105, verified after 3 f/ups w/three 450 lire stamps, in 65 days since the last one? V/s Director Leopoldo Miniati new QSL mgr, C P 79, 50018 Scandicci (F Repetto, Play-DX, 14/10)

The new expl stn of AWR is located in Forlì, halfway between Bologna and Rimini at about GC 44-13 N and 12-02 E and 30 km from the Adriatic Sea Coast. It is on top of a fine hill about 7 km from the city, 200m above sea level. At present they have a 10 kW xmtr used at 5 kW only due to electrical problems --lines are too weak to give enough power for the full 10 kW. Because of the stn's relatively low power for SW, most bcs take place during daylight and fringe listening times when there is less QRM and competition from other stns. Sig is often remarkably good and per AWR-Eu Mgr Mike Wiist, experienced bcers and DX hobbyists have been amazed at the reach and signal strength of the 'small' stn. Eqp includes two stereo cassette recorders and a Revox tape recorder plus mixer. At present, pgms come from Lisbon on cassette but in the future all studios may be in Forlì, on a farm about 50m from the xmtr, just on the other side of the road, that is undergoing restoration. This all depends on the Italian govt and whether a new law allows SW intl bcng for private stns. AWR will then bring its European base to Forlì. SW ant is log-periodic; also has FM on same mast; tests began 30/1 and regular daily sked since 16/3, now amounting to about 40h per week (AWR & Fabrizio Magrone, August DSWCI SWN)

J A M A I C A The Caribbean Show on public radio WFFW Washington DC 7/9 had an interesting news item. It seems that Jamaica's prime minister has decided to turn all of Jamaica's broadcasting services over to private interests. This end to the state-run radio system is supposed to happen very soon. It would end the state-run system that has been in existence since independence. Maybe Jamaica's new broadcasters will consider adding SW. NASWA members should voice their ideas to the Jamaican radio stns (Eric Falkenhan, Baltimore MD)

K E N Y A V of Kenya on 9725, hrd 1/10 from 1335 EG talk, 1400 brief nx & pop mx to 1445 f/out; fair over VOA & jammer noise; toughest stn to hear in central Canada; logged them only once in 30 yrs, on 4915 in 1973; is still tough, even w/250 kW on 31m, inaudible on 7220 (Ernie Behr, Kenora Ont)

Koma Rock, 9635, 250 kW xmtr testing w/relay of SH HS 1810 w/nx, dual 4915 21/9 (Craig Seager, ADXN) New site testing 1924 1/10 w/relay of Natl Svc in SH //4915 (Mick Ogrizek, ibid.) Big sigs w/natl svc, SH, Afro songs, 2045 28/9, into relig segment 2100, then 2111\*, //4915 also hrd. Baghdad also on channel underneath (Bob Padula, ibid.)

Koma Rock, 9725, \*1600-1900+ 27/9 w/EG, G level relaying 60mb outlet (Robert Shepherd, ADXN) New high-powered unit, EG nx G level 1806 but mixed RFE, //4885; would be very big if more favorable propagation present, 21/9 (Craig Seager, ADXN)

L A O S I take exception to Victor Goonetilleke that National Radio of Laos is rare, as in Sept LN (or is he talking about EG being rare?) Then I agree. Also from Duyen [his translator] I understand that the Thai dialect is more formal than Lao. It was rather noisy at 1413 1/10 on 6130 but Duyen thinks Vietnamese at that hour. Duyen also says Thai 6130 21/9 up to 1558 when the Lao national anthem is heard (Bruce MacGibbon, Gresham OR)

L E B A N O N R Voice of Lebanon, 6548.7, quite fair in AR 0334; on before listed time but often hrd around this time (Dene Lynneberg, Pauanui, NZDXT Aug)

M É X I C O R México Intl had best sig on 11770 after the quake, noted here all day 22/9, 1300-0400 f/out, strong but distorted; //9705 only after 0100, but 15430 just a weak OC, no mod (Ernie Behr, Ont)

Harmonic on 2480, XEVM, Piedras Negras, Coahuila. Here nitely since late Sept w/VG sig, tho heavy QSB. Plays EG & SP pop/rock tunes to 0558\*. Canned ID at s/off names other stns in org (XEIK, XHCA-FM, XEZM and one other). Slogans include "R Juvenil," "La Señal de Oro," and "Canal Ciento Veinticuatro." 2 x 1240, of course. This is not XEBN, as logged by others. WRTH does not list XEVM, since it's under 1 kW. Even w/clear ID, "XEBN" and "XEVM" sound almost identical (John Wilkins, CO) Vy strong in OK first week of Oct (gh, DXID)

R Universidad de México, 9600.4a, hrd 22/9 at 0216 w/mgs, phone numbers, student traffic, all earthquake-related. Lost in mud at 0232; later at 0300 hrd only BBC (John Wilkins, Wheat Ridge CO)

N A M I B I A SWABC noted here 16/9, 17/9, 18/9 on 3295 after 0400, with gui-

tar IS, and "Fanfare for the Common Man," pgms in Afrikaans. Sigs weak; had help on ID from friend on East Coast; thanks Mike Fontanarosa in Hawthorne NJ (Dave Mosier, San José CA)

N I C A R A G U A V of Nicaragua, 6015, usual EG pgm here at 0511-0607\*. Is usual EG pgm at 0400 now starting at 0500 permanently for end of DST in NAm? Many IDs such as "This is the Voice of Nicaragua on 6.015 MHz in the 49 metre band". Lots of anti-US nx & commentary; Fair on 14/9 & 28/9 (Patrick McDonald, NSW, ADXN) Couldn't be, since DST didn't end in NAm until 27/10 (gh)

P A P U A N E W G U I N E A Port Moresby, 3925, 1015 mxx pgm, western & lo cal w/Pidgin anmts; VG sig; RS 0900\* [sic]. Good. Nx (Leigh Morris, Morphet Vale, South Australia, NZ DX Times, Sept) Had been reported inactive & not likely to come back; could this have been NSB Japan? (gh)

P E R U [Cf Sept LN-27] R El Sur, Cusco, 9635, was reported by a few DXers in Jan 81, arnd 1000, but no rpts since. R Súper Pacac on 6961, via SCDX, is doubtful; same fq, time and dates as R Nuevo Cajamarca reported by others (Ernie Behr, Kenora Ont)

[Cf Sept LN-28] Juan Carlos Codina mentioned hearing R Cutervo months before the founding date told to me by the stn. There is a very likely explanation for this. In many backward, rural towns in Latin America it is not uncommon for something to function for months before an offl opening ceremony is arranged. Thus the stn really does consider 1/6/84 as the founding date, even tho they were on the air for at least ten months previous, as hrd by JCC (Don Moore, Garnavillo LA)

We get reception reports from abroad but can't always take care of them for two fundamental reasons--our primary objective is serving the population in this immediate area, so reception reports from abroad are not really of great use, although interesting; nevertheless, we enjoy being in contact with people everywhere, but present postal costs make it prohibitive for our little station to reply, since so far IRCs are not accepted in Perú. On this occasion we make a special effort to communicate with those who have sent us reports that on June 7 two charges of dynamite put into our transmitting equipment by those who wanted to manifest their disapproval of the fact that Radio Quillabamba had become the center of communication and participation by all people and their organizations, silenced our station and left the entire province of La Convención (120,000 inhabitants) and other provinces in Cuzco Dept., Apurímac and Puno which tuned in and made use of it, without the communication, information and education which they had received and now demand. With the help of the people of the province, collaboration in work and economic quotas and a loan from Radio Madre de Días in Puerto Maldonado, since the beginning of August we have resumed operations on 5025 kHz with an old 500 watt transmitter provisionally installed (until the reconstruction of our xmtr plant) within the Parish of Quillabamba, and on 91.1 MHz FM with 20 watts. Under these circumstances it is more difficult to hear R Quillabamba in this area, and I suppose even more so in your country. We have asked for help from the people, and hope to raise the funds necessary as soon as possible to purchase a new 5 kW shortwave xmtr in order to resume our former service. We hope in a few months to get together the necessary 100,000 \$ [sic--US dollars, soles or intis?] (P Rufino Lobo Alonso, o.p., Director, Aug, via Claudio Dondi, PlayDX)

R Central, 4916v, QSLed w/nice letter from Francisco Gonzales M., Gerente, who says stn was born 12/12/83 and began testing 5/2/84. Call is OAZ9A, with secondary slogan "LV del Huallaga Central". Sesquikilowatt xmtr supposed to serve depts of Loreto, Huánuco, Amazonas, and San Martín. In addn to the Bellavista addr, Progreso 389, also lists offices at Colón 789, Oficina 304, Trujillo, and Morona 295, Brena, Lima (Don Jensen, NU, via Oct DSWCI SWN)

I have been inactive for several months, but the linguist in me can not refrain from making a couple corrections to Sept LN, under PERU, but also concerning Cuba. Playa Girón is not the Spanish name for Bay of Pigs. It is a beach (where I bathed in 1975) located on Bahía de Cochinos. However, in Cuba they do call the invasion/battle : Victoria de Playa Girón. As for "Big ear", it is not oregón, as claimed by REW -or the typist! - but orejón (from oreja). (Victor C Jaar, Charlesbourg, Quebec, Canada, 29/9) Orejón actually means: slice of dried fruit, a pull by the ear, or a young Peruvian nobleman (gh)

PHILIPPINES For D85, planned EG from FEBC: 15-16 9550, 07-10 11890  
07-10 15350, 23-24 15445, 00-03 21515, 07-10 21515 (Don Rhodes, ADXN)

SÃO TOMÉ e PRÍNCIPE R Nacional, 4807, 28/9 22-2400\* on w/  
special for parliamentary election (P Moreno & S Nuzzi, Italy, Play-DX)

SAUDI ARABIA Riyadh, via Jeddah xmtr, on 9705, EG ES of BSKSA  
now here ex-11850/11855. ID & EG nx 1830 21/9 (Craig Seager, ADXN) NF for EG  
2045-2100\*, bad jamming on channel, 28/9 (Bob Padula, ibid.)

SEYCHELLES FEBA will be installing a diplexer shortly, to enable  
them to feed two xmtrs, operating in diff bands, into one aerial having the de  
sign characteristics for both bands. In Feb 85 a contract for supply of the  
device was signed with C & S antennas, Great Britain. Additionally 10 [sic--  
low or 10 ?] switches, power operated and remotely controllable, were ordered  
for selecting any two of the three 100 kW xmtrs to any combination of aerial  
beams. FEBA claims that the complete unit is the first of its kind (hi power,  
hi fq, wide bandwidth) in the world. The project of testing and installing  
the diplexer gear at the reef aerial array will be conducted by FEBA techni-  
cians with David Mason, Seychelles chief engineer, as project leader. The low  
-power tests in the factory just have been made and the probable date for ship-  
ment is Sept 9. FEBA has received permission of the Seych govt Ministry of  
Finance for the importing of diplexer, switches and further equipment free of  
customs duty. The actual installation and power testing will take one or two  
months. So towards end of 1985 the diplexer can be introed gradually to the  
present bing sked. It is hoped that the full effect of versatile opn can be  
enjoyed in the new M86 bcing period. The diplexer'll provide facility of ha-  
ving two simultaneous xmsns to SAs in the 41 & 31m bands for the early morn  
bcs in Urdu, Punjabi, Pushto and Sindhi (which up to now have been at a dis-  
advantage being only on 9580 kHz) For EAF the diplexer'll provide possibility  
of adding an extra early morn bc at peak time of 6:30-7 am. Also for EAF, it  
will be possible to add an addl xmsn in EG. Beams of reef aerial array: 40°  
to SAs, 220 to Indian Ocean Islands & S Africa, 280 to EAF, 340 ME (FEBA via  
H van der Laan, Holland, Oct DSWCI SWN)

SOUTH AFRICA SABC internal svc on new 9555 ex-9560, via long path  
16/9 0615, improved at 0622, gone by 0645; very rare fq change for this stn.  
Also on new 9695 27/9 \*0620 ex-11790 via LP, gone by 0640, no sign of RFE  
this day! Window for these has trad'ly been 06-0640 period; also another chan-  
ce via short path arnd 14-16, prior to switch to nighttime outlets (Bob Pa-  
dula, ADXN)

Radio South Africa [sic], Johannesburg, is conducting tests on 6065 and  
9600 instead of 5980 and 9615 from 25/9 thru 28/9 NAM time at 0200-0256; now  
history. Findings by monitors presumably forwarded directly to stn (Ralph S  
Bowden, ANARC-FRC, 26/9)

SURINAME R Suriname Intl, 17755, via Radio Brás at 1730-1815--this re-  
lay may close soon! (Roberto Levinstein, August DSWCI SWN)

SYRIA Damascus on 9565 often u/jammer, //12085 good; time of EG pgm va-  
ries: 21/9 at 1910-2003\*, 23/9 at 2000-2059\*, 2/10 at 2008-2104\* (Behr, Ont)

TAIWAN WYFR via VOFC on new 6300, ex-9845, \*2100 in CH, good level but  
f/out arnd 2130; in maritime-mobile allocations for Region 3 and I doubt the  
wisdom of such an intl bc opn there, 4/9 (Bob Padula, ADXN) Yes, but why do  
you single this OOB opn out from all the others? (gh)

TURKEY Polis Radyosu, Ankara, 6/10 1525-1559\* on 6340, ID 1555 (Bern-  
hard Gründl, W Germany, Play-DX, Italy) Possible grayline in NW USA? (gh)

UNITED ARAB EMIRATES UAER Dubai on 11730 in EG from 1600,  
G 29/9, //15320 fair, 15300 in QRM. No sign of Abu Dhabi during Sept (Behr)

USA The new WORLD OF RADIO sked on WRNO, cf Oct IN-31, seems to be work-  
ing well, now 1 hr later at Sat 0400 on 6185, Sun 0030 on 7355, 1400 on 9715.

Some LSU Sat nite football game coverage still starts earlier than 7 pm CT, now 0100 UTC Sun, so WORLD OF RADIO could be moved up to start at 0015 or perhaps even 0000--tune in early to be safe (gh)

VOA on 11982.5 LSB, hrd since 23/8, was actually a strong spur; 7/9 found another one on 11782.5 LSB, QRMing Brazil, both obviously originating from LSB xmtr on 11582.5. Noted daily until 28/9, when all 3 suddenly disappeared shortly after gh mentioned 11982.5 on SWLD; someone at VOA apparently listened --VOA returned 1/10 w/DSB xmtr on 11580, no spurs, but // new 9690 in EG 00-04 on top of RAE. Has anyone at VOA hrd of fq coordination? Now let's get them off 9690 (Ernie Behr, Kenora Ont)

KGEI planned D85 sked: 50 kW : 15280 2130-22 EG, 22-01 SP; 9635 SP 01-03, 9615 SP 03-14; 15355 SP 14-16. 250 kW: 7365 RS 02-06, 4160 RS 0930-14, 6150 RS 14-15. Note that no more JP from KGEI--these've been absorbed into FEBC pgming from KFBS Saipan (Bob Padula, ADXN Oct)

U Z B E K I S T A N Tashkent in EG on 9600 12-1230, seems ex-9650 where only RCI hrd; RNZ QRM 30/9 (Peter Bunn, ADXN)

V I E T N A M Hanoi reactivated on 3999, 2240 5/7, Viet talk (Victor Goone-tilleke, Sri Lanka, Aug DSWCI SW News) Don't confuse with Greenland...

Y U G O S L A V I A R Capodistria via R Yugoslavia, 6100, G \*2145-2200\* w/IT pgm produced in Studio Koper, daily svc anmt as "R Capodistria broadcasting to listeners overseas thru R Yugoslavia" 29/8 (Bob Padula, ADXN) So ID in EG??

Z A Y R E R Bukavu, reactivated on 4839, 8/9, 10/9, 11/9 \*0400-0504\* w/nx in FR 0402, vern 0406, F-G (S Nuzzi & Finn Krone, Play-DX)

Z A M B I A 3346, hrd fish eagle IS at 0447, but nothing else, as sig vy weak and local line noise; 4910 not hrd, 22/9 (John Wilkins, Wheat Ridge CO)

**CLANDESTINE CRANNY** Radio Caimán "Nat King Cole" stn hrd on 9960 0110-0115\* 29/9 w/anti-Cuban remarks in SP, ID as "R Caimán" and s/off anmts 0115; CID on 9940 also s/off 0115 but back on by 0140 and Caimán remained off. R Caimán also hrd by me & Andy O'Brien 30/9 1145-1215 w/La Hora de la Juventud, featuring pop mx, IDs, commentary; 1215\* 1/10; not sure of sign on. One morning also hrd in EG, "Castro--down!" No addr or other info known yet; tnx to Andy for ID help (Sheryl Paszkiewicz, Manitowoc WI, 10/10)

After 6 months of "Ojos Negros", mystery stn on 9960 finally began SP pgmg as "R Caymán, la emisora de la nueva generación", hrd 3/10 \*0000-0111\*, 6/10 to 0120\* & 1300-1422\*, anti-commie talks and rock mx, vy strong sig; location on Cayman Islands seems possible, but wonder if that govt approves since they already have an offl R Cayman on MW. Some days LV del CID is absent from 9940 when 9960 is on the air, so maybe sharing same xmtr when the other one is down --R Monimbó also seems related & could be at same site (Ernie Behr, Ont) Most of your suppositions are contradicted by DXSF & my obs, cf DXLD. FCC puts this in Guatemala, Monimbó in El Salvador; CID often is on at the same time, and weaker (gh)

R Caimán, 9960, the Nat King Cole stn finally IDs! First hrd 9/10 w/pop mx 0045 t/in-0059\* W ancrl's name was Cristina Tamayo. S/off anmt gives 9960 fq and says something to effect "tell a close relative or someone you can trust about us, because we have many things to share, God willing, in our next transmission." VG sig w/ute QRM, jammer? (John Wilkins, Wheat Ridge CO)

Sked changed to one UTC hour later 13/10 when Cuba went off DST--bcs run from less than an hour to a sesquihour Mon-Sat at 1200 & 0100, Suns 1400 & 2400, it seems (gh) Evening bc from 21/10 on 7310 instead (Artie Bigley, TX) Rather poor choice, w/R Moscow there! Expect another change (gh)

R Mambí Remember this minor Cuban cland? Not minor anymore, tho there might not be a direct connexion. On 23/10 at 1632, the former WGBS facilities in Miami, the strongest signal in Florida w/50 kW, was [legally] taken over by a new virulent anti-Castro stn called Radio Mambí; the call WAQI went into effect a few days earlier while still in EG format under old ownership, Jefferson Pilot, which simultaneously bought WNWS-790 and merged into it. WAQI is

not to be thought of as "wacky," but as "aquí," Spanish for "here" as in "Aquí Radio Mambí". Mambí is an historic Cuban name and also the name of a pre-rev Habana station. The change is an improvement for all concerned--WGBS with a directional signal toward the south at night could not even cover all of adjacent Broward county to the north; now WAQI day & night has excellent coverage of Cuba and beyond. Look for Fidel to at least aim another 'coheté' this way on 710--this could well be more threatening than Radio Martí, but will it get as much press attention? (gh)

R 15 de Sept, 5000, hrd most nites here in the 0500-0600\* slot since late Sept usually under, occasionally even with WWV, which is abt 50 miles from here (John Wilkins, Wheat Ridge CO)

V of the Mujahedin Khalgh on 7105, alt 7110, first noted here 1/6, vy strong, 250 kW class? //4200v, 4300v, 4960, 4200v and 4300v are from low power xmtrs and 5960 the previous unID. Per anmt hrd by Mr Sakagami, sked is \*1100- & \*1700- and Ramadan special is added at \*0645- & \*1300 & \*1530, and it could be hrd +1200-1400\*, \*1530-1640\*, \*1700-2000\* at Ramadan, only at \*1700 recently. By the way, it has been reported that this stn changed its name to "Seda-ye Mujahid" or so but I cannot agree! For there was the time that VoMK and SyM bc independently, Mr Sakagami and I came to an conclusion that these two are unified one or two years ago (and bcd its own or unified pgm?) Anyway, tho ID of VoMK is still used at opening, how can we regard it as Seda-ye Mujahid? (Hitoshi Miyashita, Japan, Oct DSWCI SWN)

unID on 4200: 13/10 0145-0302, just man & woman taking turns speaking during entire period, lang seemed mix of Arabian and Swahili; audible on both LSB & USB w/equal strength, but on LSB woppler type jammer blocking partly, reason for claiming it a clan. Sig never improved over poor. Arnd 0227 brief segment of somber singing w/Islamic flavor but not sure; stays up past 0300 to 0400 (Chuck Bolland, Lake Worth FL)

Seda-ye Engerab-e Iran (Voice of the Iranian Revolution) \*1430-1630\* in late Apr, in Persian and two verns about 30 min each 1500-1600; USB and suppressed carrier, //4500v, apparently from same facility of VoICP [Iranian Communist Party]. First noted 20/4 but unsure if same as reported by WBI several yrs ago; almost inaudible from mid-May due to prop; suffering Iran jam (Hitoshi Miyashita, Japan, Sept DSWCI SWN) On 3860v!

V of Feda'i, 3941, 1725 fair in Farsi talk, 1743 female seemed to be sending repeated msgs; hrd thru 1750\*; jammer u/ at t/in but later disappeared (Dene Lynneberg, Pauanui, NZ, NZDX Times August)

#### MAXFIELD GREENWOOD'S 60MB AFRICAN SURVEY

Recently returned from a much needed period of vacation and travels, and am a new man! Was away for 6 months in all. Have returned to SW, but for now am using merely my FRG-7000 and a 850 foot antenna whose last 280 feet is a 70' by 70' quad. Wanted to contribute something that's really what gives the hobby a kick for me. On 22/9 to 29/9 I monitored 60m specifically to get a complete breakdown of Africans reaching downeast Maine. So here are the results of monitoring between 0300 & 0700, and 2000 & 2400, updated 10/10; p = presumed.

4737 Mozambique, and does seem to be via Maputo, VP in GMT PM but poor to fair 0300-0415 apx; chimes preceded by ID at 0330, then nx; 23/9 sig peaked 0345-0415. Noted at P-F level 2030 10/10 so pm prop is improving here

4750p R Cameroon, Bertoua, noted in passing, oft QRMed by unID ute

4760 Liberia, F-G levels, in EG, G 10/10 as early as 2045

4770 Nigeria, Kaduna, F-to quite good, EG seems the usual; not noted 10/10

4777p Gabon, can only presume as this once excellent afro has been buried by a ute

4783 Mali, FR, N Af mx, G but irregular [? not fully legible] from 0600

- 4795 Cameroon, Douala, G in FR in both am and pm
- 4800 Lesotho, when not being QRMed by unid ute is propagating very well to as late as 2200\*; and from its \*0400 to apx 0515 f/out; s/off varies
- 4806+ São Tomé, noted at 0600 t/in 24/9; is the most interesting stn for me to have monitored. Due to time of deep fade, 0620, and due to lang, PT, and also the fq, this dormant stn may be making irregular appearances; not noted since
- 4810 Gabon, FR, generally G to VG
- 4816 Upper Volta, curiously highly variable propagation; anywhere from VP to G, in both listening periods, 2100+ and 0530+ in FR, w/talk and good NAF mx
- 4820 R Botswana, P-G when not being QRMed by Angola; in EG & verns w/pop mx
- 4820 Angola, pretty sure it is Luanda, irregularly here 2100+ & 0400+, tentatively noted on 4950 one night 0400+
- 4835 SABC English, generally F-G 2100+ and 0400+, Talk, mx, cultural, etc.
- 4845 Mauritania, generally fair to good in Arabic
- 4850 Cameroon, Yaoundé, F-G, enjoyable Afro pop; generally in French
- 4870 Benin, this old standby has never been logged by me from 0400+ and 2000/2100+ in my 6 years of SWL/DXing
- 4880 SABC, Afrikaans service, generally F-G; both 4835 & 4880 s/off at 2130 10/10, but this sign-off time seems to vary
- 4890 Sénégal, AR, F-G 2100+ and 0600+
- 4904 Chad, in FR from \*0500 & in GMT pm, 2030+ to variable s/off
- 4910 Guinea, noted irregularly 2030+ to 2300/2400 s/off, in FR, fine WAF mx, tentative ID "Ici Conakry", format mx & fq as well as tent ID tends to make near certain this is Guinea; P-G levels, periodically QRMed by a big Morse sig
- 4915 Ghana, quite regular and at good levels in vern & EG; Kenya not yet noted here
- 4926 Equatorial Guinea, SP & vern, Af mx, G levels; this fq is the usual but noted one time on 5004
- 4970 unID, very poor here 2000-2100, perhaps African
- 4990 Nigeria, Lagos, F-G EG nx, talk, cultural, etc, 0430+ and to 2300+; RSA also noted here at \*0257 in EG
- 5004 Equatorial Guinea, occasional alt to 4926
- 5010 Cameroon, Garoua, FR, AR, EG, and vern, mx NAF in nature, talk and nx; in past nx in EG at 0540+, generally good
- 5021 Niger, one night at \*0530 when the 5020 Albanian was missing; fair lvl, FR ID, M chanting; usually buried by 5020 stn, but presence notable via het
- 5027 Uganda, good level to fair at 2100
- 5035 Central African Rep., pop mx, F-G [no time]
- 5047 Togo, G levels in both am & pm (Maxfield Greenwood, Sedgwick ME, 10/10)

Bruce MacGibbon, Gresham OR: I have to agree with Dr Richard Wood about current trend of FRENCH/NASWA and its logs. (I see nothing wrong tho with trend towards beginners club as in some respects every seasonal change we all begin again looking for the schedule changes. I'm a relatively newcomer, 2 years or 3 active) (I know he wasn't referring to that). How do you expand the hobby if you don't cater to new people? My personal opinion is we have a lot of ego trippers out and about, and a lot of QSL collectors instead of people who just enjoy radio. I fully realize that the majority of SWLs do not have the time to continuously tune and are fully frustrated by noise everytime they turn on their radio. The only way I will burn out is when my radio burns out or my ears go. If my main goal was to show all my countries verified, I would have quit by now.

**PUBLICATIONS** DX Listening Digest If you would be interested in DX news concerning Afghanistan, Albania, Algeria, Angola, Argentina, Australia, Austria, Bangladesh, Belgium, Belize, Bhutan, Bolivia, Botswana, Brazil, Burkina, Cameroon, Canada, China, Costa Rica, Cuba, Chile, Ecuador, Egypt, France, Gabon, Germany West, Ghana, Guam, Guinea-Bissau, Guyana, Haiti, Honduras, Iceland, India, Indonesia, Iraq, Ireland, Israel, Italy, Jamaica, Japan, Kenya, Korea North, Korea South, Kuwait, Laos, Lebanon, Madagascar, Malawi, Mali, México, Morocco, Namibia, Netherlands, Neth. Antilles, New Caledonia, New Zealand, Nicaragua, Nigeria, Pakistan, Papua New Guinea, Paraguay, Perú, Philippines, Pitcairn Island, Portugal, Saipan, São Tomé, Saudi Arabia, Sénégal, Singapore, Solomon Islands, South Africa, Sri Lanka, Surinam, Sweden, Syria, Thailand, Tunisia, Turkey, USSR, UAE, UKOGBANI, USA, Vatican, Vietnam, Zaire, Zambia, Zimbabwe; Central African Republic, Colombia, Czechoslovakia, Dominican Republic, El Salvador, Equatorial Guinea, Galápagos, Greece, Iran, Kashmir, Liberia, Malta, Monaco, Mozambique, Nepal, Niger, Palau, Qatar, San Andrés, UN, Yap, Yugoslavia, with about 634 cross-referenced frequency entries, perhaps you should order Issue #1 before it is out of print, and take out a subscription to DXLD to keep such information coming; half of DXLD is devoted to Enjoying Radio, a technical/philosophical forum edited by David Newkirk, including such topics as lessening audio distortion with the IC-R71A; no dice on latent RIT for the IC-R71A; RIT-defeat with tuning escapable on the IC-R70; Breakthrough: RIT for the IC-R71A, modifying the CR-2021; QRP and crummy antennas; solving strange interference on a Connecticut FM; a better filter for modern times; what's cooking at RSGB?; the retailer strikes back; design flaws in the FRG-8800; are you paralyzed by choice? Du Fu in Exile.... Samples are \$1.50, subscriptions for 12 issues \$17 in North America, US\$ on US bank, or postal money order in US\$ please. DX Listening Digest, Box 490756, Fort Lauderdale FL 33349 (gh)

Review of International Broadcasting, Issue 104, is now available. Unlike its sibling DXLD, RIB emphasizes SW programming, comments about it, press clippings about stations, etc., in main section Listener Insights on Programming, about Afghanistan, Alaska, Argentina, Australia, Austria, Belize, Botswana, Canada, China, Costa Rica, Cuba, Chile, Ecuador, El Salvador, Finland, France, Guatemala, Grenada, Iceland, Hungary, India, Iraq, Italy, Ivory Coast, Korea South, Kuwait, Libya, Liberia, México, Netherlands, Nicaragua, Philippines, Puerto Rico, Surinam, Sweden, Syria, United Kingdom, UN, USA, Vatican, Vietnam, Wake Island. Also, more than two pages listing PUBLICATIONS related to radio you may want to obtain; Domestic Information & Associated Listening (DIAL) edited by Craig W Krist, on AM & FM programming and developments; Radio Equipment Forum, edited by Loren Cox, starting with his experiences as a new TVRO owner, and all the radio also available from the birds; power supplies for the ICF-2002; audio quality of the R70, and more; A Useful Information Source for the SWL and DX Listener, by Alan Plotnick. Samples are \$1.50, 12-issue subscriptions in North America are \$18, US\$ on a US bank or postal money order, from RIB, Box 490756, Ft Lauderdale FL 33349 (gh)

D X L D and R I B combination offer, expires Jan. 1, 1986: Subscribe to both at the same time, and save \$2--that is, \$33 in the US and Canada, instead of \$35. Address above (gh)

Next month in LN, we expect the return of BBC Monitoring Service information!

# QSLs

Sam Barto  
47 Prospect Place  
Bristol, CT 06010  
USA



ANTARCTICA: AFAN McMurdo 6012 f/d cd. in 13 ds. for a taped rpt. (Stone-WA).

ASCENSION ISLAND: BBC 15400 f/d personal ltr. in 259 ds. direct from station. v/s S. Hurst, Maintenance Engineer. (Dillon-MD).

AUSTRALIA: Radio Australia 9580 via Shepparton f/d "Woodchopping" cd. in 27 ds. (Levison-PA). f/d "Brisbane" cd. via ARDXC in 84 ds. v/s Peter Bunn. (Schulman-TN). 15395 f/d cd. in 21 ds. (Phipps-MO). 7205 and 6045 via Shepparton and 9770 via Carnarvon w/ f/d "Tasmania" cd. in 9 wks. (Barto)

AZAD KASHMIR: Azad Kashmir Radio f/d friendly ltr. in 18 wks. for ms. v/s Muhammad Aslam Zafir. (Howard-CA). Ron says this is the Rawalpindi relay. 5238.3 same type ltr. in 3 1/2 mo. (Barto-CT)...Is this the Trakhel relay? Anyone got anything on this?? Sam.

BELGIUM: BRT 5910 f/d cd. in 30 ds. (Levison). (Schulman).

HONAIRE: Radio Nederland 6165 f/d "Flevo" cd. in 40 ds. for ms.

BRASIL: Radio Bras 11745 f/d cd. in 250 ds. for 2 IRCs. (Kacir). 11745 and 15155 f/d "Minas Gerais - Congonhas do Campo" cd. w/ personal ltr. in 87 ds. for a PT rpt. (Schulman). Radio Ribeirao Preto p/d cd. in 60 ds. for a PT rpt. and ms. (Forsgren). Radio do Amazonas 4805 n/d "Brasil Nativo" cd. in 1 mo. for a PT rpt. and 1 IRC. (Gliksman-IL).

BURKINA-FASO: Radiodiffusion du Burkina 4815 f/d form ltr. in 7 wks. for a FR rpt. and 1 IRC. (Gliksman).

CANADA: RCI 5960 f/d cd. in 3 wks. (Gliksman). 9755 f/d cd. in 15 ds. (Forsgren). CHU 7335 p/d "Sir Sanford Fleming" cd. in 22 ds. (Niekamp).

CANADA (Pirate): CCAT Canadian Club Radio 8222 f/d ltr. in 48 ds. for 2 IRCs. 120 watts. Addr: Box 140, 3090 Danforth Ave., Toronto M1L 1B1. (Plum-NJ). f/d form ltr. in 2 wks. for 1 IRC. (Palmerheim-MN).

CHAD: Radio Nationale du Chad 4904.5 f/d cd. in 1 mo. for a FR rpt. and 1 IRC. (Woloch-QUE).

CHINA, PEOPLES REP. OF: Radio Beijing 11860 p/d cd. w/ pennant in 16 ds. for 1 IRC. (Woloch). 15520 f/d "Year of the Ox" cd. in 38 ds. w/ pennant (Levison). f/d cd. in 2 wks. (Palmerheim).

COLOMBIA: Ondas del Orizaba 4975 f/d prepared cd. in 37 ds. for a SP rpt. and ms. (Plum).

COOK ISLANDS: Radio Cook Islands 11760 f/d cd. in 17 ds. for 3 IRCs. v/s Nooroa E. Tangaroa. (Paszkiewicz-WI). f/d "Conch Blower" cd. in 48 ds. for 3 IRCs. (Forsgren).

DENMARK: Radio Denmark 15165 f/d cd. in 16 ds. w/ personal ltr. (Schulman).

ECUADOR: HCJR 15155 f/d "Railroad Car" cd. in 23 ds. for 2 IRCs. (Falkenhan-MD). 15155 and 17790 f/d "Hibiscus" cd. in 2 mo. (Schulman). CRE 4656 n/d personal ltr. w/ pennant in 92 ds. for a SP rpt. v/s Alicia de Blacio. (Plum). Radio Zaracay 3395 p/d ltr. in 4 1/2 mo. for a SP rpt. and 2 IRCs. v/s Elsy Cun C., Secretaria. (Paszkiewicz). p/d ltr. w/ decal and pennant in 4 mo. for a SP rpt. and ms. (Niekamp-MN).

Emisoras Gran Colombia 4910 n/d personal ltr. w/ pennant in 4 1/2 ds. for a SP rpt. v/s Nancy Cevallos de Espinosa. (Schulman).

ENGLAND: VOA 15225 via wooferton f/d cd. in 50 ds. (Falkenhan).

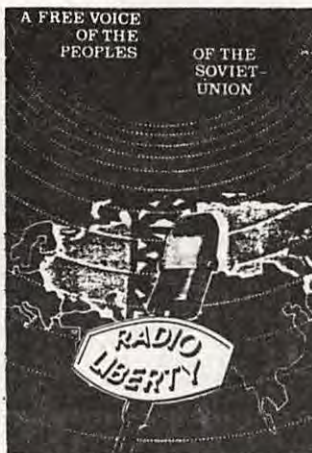
RCI via Davenport 9555 f/d cd. in 3 wks. (Gliksman). RCI via Skelton 7230 f/d cd. in 2 wks. (Gliksman-IL).

ETHIOPIA: Voice of Revolutionary

Ethopia 9560 f/d cd. w/ sticker in 4 mo. (Field-WI).

EUROPEAN RUSSIA: Radio Moscow 13645 via Kazan cd. in 3 mo. (Barto).





**EUROPEAN RUSSIA:** Radio Moscow 13665 via Simferopol f/d cd. in 40 ds. (Rigas-IL). 13650 and 13645 via Moscow w/ f/d cds. in 30 ds. (Plum-NJ).

**GERMAN DEMOCRATIC REP:** RBI 11975 f/d "Alfred Brehm Haus" cd. in 97 ds. (Levison). Y3S 4525 n/d cd. in 69 ds. for 1 IRC. (Falkenhahn-MD).

**GERMANY, FEDERAL REP. OF:** RFE 11815 via Bibli p/d cd. in 2 wks. (Gliksman-IL).

**GUATEMALA:** Emisora Luz y Vida 3250 f/d cd. in 240 ds. for a SP rpt. and ms. v/s Donald Moore, Gerente. (Foux-VA).

**GUYANA:** GBC 5950 f/d form ltr. in 40 ds. for a taped rpt. and 1 IRC. v/s Phyllis Hyles. (Woloch-QUE).

**HOLLAND:** Radio Nederland 9895 f/d cd. in 29 ds. for 1 IRC. (Brouillette-IL).

**HUNGARY:** Radio Budapest 9520 f/d "Mezokovesdi Costume" cd. in 1 mo. (Brouillette). same in 44 ds. (Kacir). 9835 f/d "Cathedral" cd. in 37 ds. (Kacir).

**ISRAEL:** IBA 9440 f/d cd. in 44 ds. (Brouillette)

**JAPAN:** Radio Japan 17755 p/d cd. in 2 wks. (Palmerheim).

**KAMPUCHEA:** Voice of the People of Kampuchea 11938 f/d ltr. in 18 mo. via \* Hanoi. v/s Mao Mayan. (Gliksman-IL).

**KIRIBATI:** Radio Kiribati 16432 f/d prepared cd. in 56 ds. for 2 IRCs and \* ms. v/s B. Reiher, Engineer. (Wilkins-CO).

**KOREA, DEMOCRATIC PEOPLES REP. OF:** Radio Pvyongwang 9977 f/d cd. in 2½ yrs w/ pennant. (Talbot-ALB).

**KOREA, REPUBLIC OF:** Radio Korea 15575 f/d cd. in 29 ds. (Levison). 6480 & 7550 f/d "Seoul Skyline" cd. in 7 mo. (Barto-CT).

**LIBERIA:** VOA 15600 f/d cd. in 10 ds. (Schulman). 11720 cd. in 9 ds. (McDaniel).

**MALTA:** Radio Mediterranean 6110 f/d "Map" cd. in 214 ds. w/ poster and sticker. (Henschen-IN).

**MEXICO:** XEUDS Radio Universidad de \* Sonora 6115 n/d yellow "Logo" cd.

in 167 ds. for a SP rpt. and ms. (Wilkins-CO).

**MONGOLIA:** Radio Ulan Bator 12015 f/d cd. in 3 mo. (Paszkiwicz-WI).

**MONSERRAT:** Deutsche Welle 9545 new style cd. in 57 ds. (Schulman).

**MOROCCO:** RTVM 11730 f/d "Map/Antenna" cd. in 21 ds. for a FR rpt. and ms

**MOZAMBIQUE:** Radio Mocambique 3210 "World Map" cd. in (Wilkins-CO).

5 wks. for 1 IRC. (Laskowski-IN).

**NEW ZEALAND:** Radio New Zealand 17705 f/d cd. in 19 ds. (Levison). same in 558 ds. for 3 IRCs. (Schulman).

**NIGERIA:** Voice of Nigeria 15120 p/d ltr. in 331 ds. for 2 IRCs. v/s Mrs. M.O. Garber, Public Relations Dept. (Henschen).

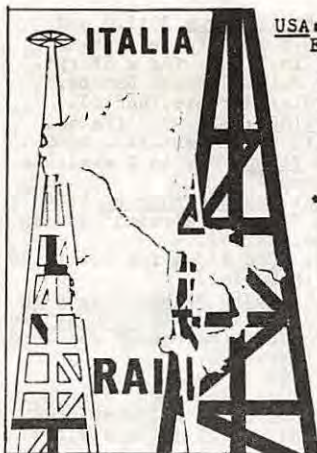
**NORWAY:** Radio Norway International 9580 f/d cd. in 38 ds. (Levison). 15305 f/d "Local Costumes" cd. w/ sticker in 31 ds. (Eckert)

**PAPUA NEW GUINEA:** Radio Southern Highlands 3275 f/d prepared cd. w/ ltr. in 24 ds. v/s Paulias Korni, Assistant Station Manager. (Wilkins). Radio Madang 3260 f/d personal ltr. in 34 ds. v/s John D. Isinii, Station Manager. (Forsgren).

**PERU:** Radio Atlantida 4790 n/d personal ltr. in 9 mo. for a SP rpt. and ms. v/s Ivan Tenorio Matute, Gerente. (Niekamp). Radio Quillabamba 5025 p/d ltr. in 4 mo. w/ pennant for a SP rpt. v/s P. Rufino Lobo Alonso, Director. (Barto-CT).







USA: WMLK 15110 n/d ltr. in 13 ds. for ms. v/s Elder Jacob O. Meyer.(Foxy). n/d form ltr. in 39 ds. for ms.(Paszkiwicz). same in 1 mo. for ms.(Kusalik-ALB). f/d ltr. in 18 ds.(Van-Horn). in 25 ds.(George-TX). n/d ltr. in 3 ds (D'Angelo). WINE 15185 f/d cd. in 14 ds. for ms.(McDaniel). WYFR 11830 f/d cd. in 5 wks. (Bowden-CA). Voice of Free China 5985 via WYFR f/d cd. in 55 ds.(Levison). KGEI 11715 f/d cd. in 21 ds.(Phipps). Radio Earth International 11790 via KGEI f/d "Curacao" cd. in 1 mo. for first day transmission. v/s Jeff White.(Palmerheim). same in 23 ds.(Schulman). La Voz de la OEA 11830 via Greenville f/d cd. in 4 ds. for a SP rpt.(Dillon). Radio Marti 6075 p/d ltr. in 15 ds. v/s Tom Warden.(Rigas-IL). 9660 n/d ltr. in 35 ds. v/s Paul P. Schleisman, Chief Technical Operator.(D'Angelo). VOA 15375 via Delano f/d cd. in 3 wks.(Palmerheim). WRNO 15420 f/d cd. w/ sticker in 35 ds.(Schulman).

USA (Pirate): Radio North Coast International 7433 f/d cd. in 6 wks. for ms. 1000 watts.

(Talbot). 7431 f/d blue "Logo" cd. in 35 ds. via Moorhead addr.(Reinstein-FL). WKUE 7435 p/d form ltr. in 6 1/2 mo. for ms.(Palmerheim). 7434 p/d ltr. in 2 mo.(Barto). WYMN 7427 f/d ltr. in 87 ds. for ms.(Rigas). Radio Nova International 7428 f/d ltr. in 37 ds. for ms. and a taped rpt.(Sgrulletta-NY). Samurai Radio 6275 f/d ltr. in 21 ds.(Reinstein). Union City Radio 7435 f/d "Reagan-Ronbo" ltr. in 48 ds. for ms. 50 watts.(Plum). Zeppelin Radio Worldwide 7430 f/d cd. in 5 wks. for ms.(Talbot).

USSR: Radio Moscow 11890 f/d cd. in 37 ds. This report was for Radio Magallanes but no mention on the QSL.(Wilkins). Radio Magallanes 9450,9490,7240,9810,11745,9710,7440,12045 and 11800 p/d cd. in 2 mo.(Barto)..No mention either. Radiostantiva Rodina 5920,9865,7310 and 7290 f/d cd. in RS for a RATC rpt. in 3 mo.(Barto).

VATICAN: Radio Vatican 11845 f/d cd. in 1 mo.(Bowden). 9615 f/d cd. in 3 wks. for a SP rpt.(Bowden). 6015 f/d cd. w/ paper pennant in 26 ds.(Weber). 15405 and 11955 f/d cds. in 1 mo.(Bowden).

VENEZUELA: Radio Capital 4850 f/d "Logo" cd. w/ sticker in 25 ds. for a SP rpt. and 2 IRCs. v/s Mauuel Correa, Gerente de Produccion.(Henschen). same in 30 ds. for a SP rpt. and ms.(Niekamp). f/d cd. in 1 mo. w/ sticker for a SP rpt. and 2 IRCs.(Palmerheim). Radio Monagas 3325 f/d prepared cd. w/ ltr. in 36 ds. for a SP rpt. and ms. for 83 reception. v/s Angela de Lamberti, Administradora.(Plum). YVTO 6100 p/d form ltr. in 136 ds. for a SP rpt. and ms. v/s Cn. Eddy G. Mendez Perez(Falkenhan-MD).

Sorry for the mix-up but we have a few late reports to get in...Sam.

BENIN: La Voix de la Revolution 4870 p/d cd. in 183 ds. for a FR rpt. and 3 IRCs.(Wilkins).

CHILE: Radio Agricultura 9630 f/d personal ltr. in 23 ds. for a SP rpt. and 2 IRCs. v/s Carlos Toledo Verdugo, QSL Manager(Henschen)

CHINA, PEOPLES REP. OF: Nei Menggu PBS 6974 n/d \* ltr. in CH direct from station in 1 mo. for an EG/CH rpt.(Wilkins-CC).



**NOTE: Michael Schmitz** in Germany says that this summer was a very rainy one. On Sept. 13 he will be going to the local DX camp at Kirchhellenbach. Last year over 100 DXers were there! **Mike Hardester** reports that he has just returned to active duty and will be reporting to San Diego. **John Tow** reports that his R-390A is presently on stand-by while his primary receivers are the SPR4 and the R70 along with a CR-2021. Nice gear! Received a very nice letter from **William Fulton** in Houston, TX. He also uses an R70 along with a CR2021 receiver. Must be catching! **Sheryl Paszkiewicz** says that DX has been very slow this summer. She hopes to get the hang of DXing PNG/Indos this winter. After a few years absense **Don Weber** of Westlake, OH has once again started to write to many of his shortwave catches. Keep the reports coming in if you hear from them. Also received some interesting letters from **Dave Valko** and **Bill Muzyka**. Dave was recently on a DXpedition. **Erich Schulman** reports that the QSLs have really been slow in arriving. **Kevin Atkins** uses an R390A along with the R70 as his main receivers. He says that the DX hasn't been all that bad this summer. Don't worry about cutting up your reports into slips. I can take care of that. **Ray Niekamp** says (that a lot like me) he gets the blahs for DXing in the summer months. The fall starts his juices flowing. Hi! As a point of interest **Mr. Joe Leyder**, 9 rue de Tilleul, L-9285 Diekirch, Luxembourg is very interested in DX-Philately. Anyone interested in writing to Joe? Neil?

**COLOMBIA: RCN 6160.3 f/d prepared cd. w/ sticker in 36 ds. for a SP rpt. and ms. v/s S. Munevar Silva, (Wilkins).**

**COSTA RICA: Radio Impacto 6150 p/d "Logo" cd. in 3 wks. for a SP rpt. and 2 IRCs. v/s Juan Carlos Aquero. (Henschen). TIFC 5055 cd. in 1 mo. for 1 IRC. (Laskowski). Radio Reloj 4832 f/d cd. in 14 ds. for a SP rpt. and ms. (Niekamp).**

**CUBA: Radio Habana Cuba 11760, 11710 and 11850 f/d cd. in 4 1/2 mo. (Barto); CZECHOSLOVAKIA: Radio Praha 11990 f/d cd. in 29 ds. (Levison).**

**ECUADOR: Radio Catolica Nacional 5055 n/d personal ltr. in 3 wks. for a SP rpt. and 2 IRCs. plastic pennant revd. v/s Diana Garcia A., Secretaria General. (Henschen). Radio Baha'i 4990 n/d personal ltr. in 3 wks. for a SP rpt. and ms. v/s Marcelo Quinteros Mena, Gerente Ejecutivo. (Henschen) HCJB 6095 and 9745 f/d cds. in 24 ds. (McDaniel).**

**ENGLAND: BBC 9515 n/d cd. in 57 ds. (McDaniel). VOA 6080 via Woolferton f/d cd. in 5 ds. (Wilkins).**



**GERMAN DEMOCRATIC REP: RFI 9620 f/d cd. in 30 ds. (McDaniel).**

**HAWAII: WWVH 15000 p/d "Outrigger" cd. in 10 ds. for ms. (Wilkins).**

**HONDURAS: Radio Juticalpa 4781 f/d prepared cd. w/ ltr. in 24 ds. after several f/up rpts. in SP. v/s Victor Rubi Zapata, Gerente. This was for a 1981 reception. (Wilkins). (Talbot-ALB).**

**USA (Pirate): Radio Nova International 7428 f/d ltr. in 5 wks. for ms.**

**USSR: Radio Moscow 15420 f/d cd. in 1 mo. (Bowden). 9795 and 15170 cds. in 5 wks. (Bowden). 12020 cd. in 35 ds. (VanHorn).**

SURINAM BROADCASTING FOUNDATION	 JACQUES VAI' EERSTRAAT 20 PARAMARIBO SURINAME <b>MW 725 Kcs 50.000 Watts</b> STICHTING RADIO OMROEP SURINAME <small>Paramaribo - J - 5' - 19 0'</small>	<small>POST OFFICE BOX 311          TILIPORAI STROOP          CARIBI ADDRESS          SRS PARAMARIBO          BARRIS          DE SURINAMSCHE BANK NV          HAREN BANK NV</small>
	<p>Dear Mr. Eric Tallekhan</p> <p>Many thanks for your reception report, which we received some time ago, including the stamps/postmarks/indications about your country/home recordings/possible recordings.</p> <p>From the program details mentioned in your report we conclude that you listened to our broadcasts, of the 27<sup>th</sup> of Greenwich Mean Time (GMT), from 14:00 to 01:57 on the MEDIUM WAVE, 126-465 on the SHORT WAVE, 4830 KCS.</p> <p>Your reception report was up to date, and as a RADIO SRC listener, for many from Surinam, we send you the QSL verification.</p> <p>Appreciating your collaboration, we wish you continued success with your DXing hobby, and the logging of more stations broadcasting on MEDIUM and SHORT WAVE BAND.</p> <p>Yours truly,            Ray J. Zuchowchen  <small>QSL Manager</small></p>	

73's  
and best DX

*Sam*

# update

November 1985\*\*\*Number 198

Tom Alleman  
636 E. 74th Terr.  
Kansas City, MO 64131 USA  
(816)523-7292 7-10pm central only

UPCOMING DEADLINES: 10 November (Mid-Nov) 20 November (Dec) 10 December (Mid-Dec)

Reproduction permitted. Credit original reporter and NASWA UPDATE. Dates, times and days GMT: freqs kHz.

\*\*\*\*\*

**CAMEROUN** Yaounde, 9355, in EG 2054-2120; good. Hilife mx, EG annmt prior to nx stating that other outlets would be joining network for the news. ID: "This is Radio Cameroun." News. At 2117, tc and "Listen tomorrow when we bring you more programs in EG. Good night." Ute QRM. (Richard D'Angelo, PA 10-3)

**COLOMBIA** LV del Llano, 6116, in SP 0148-0215; good. Lively vocals and quick IDs. Full ID and freq annmts at 0200. Into a variety of latin music selections. (D'Angelo, PA 10-6)

**ECUADOR** LV del Upano, 5040, in SP 0050-0139\*. Very good. Contemporary mx hits--EG lyrics. Nice voice over. ID 0100: "La Voz del Upano." more continuous mx until nx 0124. S/off annmts 0129 into anthem. Another set of annmts including address. Entire s/off routine lasted 10 minutes. (D'Angelo, PA 10-6)

**GHANA** GBC-2, 3366, in EG 2206-2306\*; good. Rod Stewart vocals (4 selections in 25 minutes) and other EG pop vocals to ID 2230 as Commercial Service--2. Followed by an inspirational talk to 2243. Then ID: "This is Radio 2, the commercial service of the GBC." At 2245, nx highlights after "quarter to Ten" ID. (D'Angelo, PA 10-6)

**INDONESIA** The morning of October 2, 1985, was one of the best mornings for Indos from Sumatera/Kalimantan/ Sulawesi, etc., particularly from Sumatera. The 90 mb seemed to be filled with their signals. Opening lasted from 1340a-1420a. So writes Ed Kusalik, who also sent the following reports as examples:

--RRI Menado, Sulawesi, 3215, noted with a discussion at 1350 and even information on where to write to the station, intermixed with some beautiful "lagu popular" mx. ID 1356.

--RRI Tanjung Pinang, Sumatera, 3225(M), noted 1359 with selections prior to the hour, then male speaker with nice ID for the station, five time pips, the last longer than others, then another clear ID (no SCI) and right into modern ballads.

--RRI Banjarmasin, Kalimantan, 3247 (M), noted 1400+ under very strong Ute on 3250, with some lagu popular, some beautiful songs played, no ID heard but surely them due to programming.

--RRI Jakarta, 3277(M) noted with relay of Jakarta nx // 4719 at 1405. Many mentions of "warta berita," news item about Indonesia noted.

--RRI Tanjung Karang, Sumatera, 3395, noted with lagu popular 1350+, male speaker and many references to Tanjung Karang between selections.

As Ed puts it, "Beautiful opening to Sumatera/Kalimantan this morning!" (All Ed Kusalik, AB 10-2)

RRI Pekanbaru, 5886(M), in IN 1345+; noted with a variety program. Very strong signals, 9+ on the scale, and station ID 1346. (Kusalik, AB)

**KOREA (NORTH)** Clandestine Echo of the People, 5885.2, in KR \*1055. March, Korean mx, ID by M, unification song, talk by W and talk by M. Per RADX this is a "grey-black" clandestine which uses annrs with Southern accent to mimic Echo of Hope. Got ID be comparing my report with RA tape. Format identical. (Vlad Cucura, PA 10-13)

**LIBERIA** VOA Monrovia, 3990, in EG \*0600. Nx, "Dateline Africa," weak but in the clear from ARO QRM. (Kusalik, AB 10-3)

**PERU** R. Eco, 5010, in SP 0248-0306; fair. Nice blend of SP vocals, Echo-effect ID followed by ad string 0300. Lead off ad for Inca Cola. (D'Angelo, PA 10-11)

**RWANDA** DW, Kigali, 7225, in EG/FR 0510-20; poor. End of EG prgm to East Africa, ID.

Into 35 minute FR prgm. All done over background of African tribal mx. (D'Angelo, PA 10-6)

**USA** KCBI, 11925, noted 10-8 with ID and religious prgms. Ad for tape costing \$4.00. (Jerry Stuart, OK)\*\*\*Time OM? tba

**VANUATU** Tentative Radio Vanuatu, Port Vila, 3945, noted 0630 with tentative ID then variety prgm with various selections, and lang in verns/FR. Whoat sounded like current affairs and annmts 0635. QRM from NSB Chiba Japan 0635, which by 0645 had completely overridden Vila. (Kusalik, AB 10-3)

\*\*\*\*\*

The first installment from a new contributor this month. Veteran DXer John Tuhscherer joins us with some interesting reports:

5802 PERU R. Frec. San Ignacio, 0347-57\*, 9-28, anncing "Musica Romantica," ID by M, a few annmts and off.

- 4608 INDONESIA RRI Serui, 1147-1206 and 1224-40, segued songs, instrl mx. SCI at 1228. Nice level 9-17.
  - 5199 PERU R. Imagen, 0346-0508 t/out. On late with variety of mx, Happy Birthday, Anniversary Waltz, etc.
  - 3275 VENEZUELA R. Mara, 0007-28 w/ LAM songs, short talks by M&W.
  - 7200 SOMALIA R. Mogadischu, \*0258 but soon in mix with VQA. Over VOA by 0309.
  - 3255 LIBERIA ELBC presumed 2346-0002\* with EZL mx, anncmts in unknown lang.
  - 4965 BRAZIL R. Poti, Natal, 0243-0301\* with old US pops. Includes the city in the ID.
  - 5050 ECUADOR R. Jesus del Gran Poder, 0045-0105 t/out. Religious talk, hymn, prayers.
  - 4718 CUBA Also on 4742 and 4694 with new RS outlets heard from 9-30 1031-1101 t/out w/ talks, folk mx. 4742 very strong.
  - 3285 BELIZE RB in clear with EG nx 0301.
  - 7255 BOTSWANA RB, 0400-0417 w/ EG talk on malnutrition.
  - 4870 ECUADOR R. Rio Amazonas, 0244-0307; HC mx, IDs, bulletins.
  - \*\*\*\*\*
- More from Tuch, other reporters and I hope from you next time. Till then,

Best 73

# Clandestine Confidential

Gerry L. Dexter • RR 4 • Box 110 | Lake Geneva, Wisconsin • 53147

CLANDESTINE CONFIDENTIAL is your best source for news about the secret world of political radio broadcasting.

The Clandestine Confidential Newsletter is published six times a year (4 pages) and contains the latest frequency and schedule information, addresses and background notes on clandestine stations. Subscriptions are \$10 per year, \$13 foreign in US funds.

**Special Clandestine Confidential Publications:**

- List of stations by time - \$3.00
- List of stations by frequency - \$3.00
- List of clandestine station addresses - \$3.00
- Clandestines of the Middle East - \$3.00 (avail Oct/85)
- Clandestine Stations of Latin America - \$3.00 (Oct/85)

The book, CLANDESTINE CONFIDENTIAL, provides an introduction to clandestine listening and verifying, chapters on famous clandestines of the past and a survey of the modern clandestine scene. Price \$8.95 from Universal Shortwave Radio, 1280 Aida Drive, Reynoldsburg, OH 43068. Add \$1.75 shipping. Many shortwave booksellers also carry it - we do not sell it from CCN headquarters.

Subscriptions and orders for all other CCN publications should be sent to the masthead address. Make checks payable to Gerry L. Dexter



# LOG REPORT

## section A

2000 to 4899 kHz

Editor: Mike Harris, P.O. Box 264, Grove City, OH 43123

- 1610 Anguilla. Caribbean Beacon. 0015. EG w/ "700 Club pgm. (Alcorn 18/9)
- 2390 Mexico. R. Huayacocotla. 0109. SP. Nx aby Mex. econ and politics. ID as "LV de los Campesinos". (Dickson 15/9)
- 2495 Madagascar. R. Madagaskaria. 0240. Woman w/ talk (Hill 10/10)
- 2850 North Korea. KCBS. 0952. Fair but consistent signal/9665. pgm of MX w/OL ancr (Wilkner)
- 3200 Swaziland. TWR. 0355. EG/GG. IS and ID's in EE/GG and into GG sve (Bobb 22/9)
- 3250 Honduras. R. Luz y Vida. 0354. EG. Evangelistic pgm, mx, S/O (Trotto 6/10)
- South Africa. SABC Radio Five. 0410. EG. Rock mx and TC for "16 past 6 O'Clock", some Afrikaans talk, ads. (D'Angelo 7/9)
- 3255 Liberia. LBS. 2327. EG. Pop instr. mx, reverb ID by W. (Bobb 27/9)
- Venezuela. R. 980. 0030. SP. EZL LA mx. Tigre ID at 0044 (Dickson 30/9)
- 3275 Venezuela. R. Mara. 0310. SP. ID and vocals w/ instr mx (Plum 29/9) (Dickson 28/9)
- 3385t French Guiana. 0050-0105. Swing style jazz mx, either SC or fade out so no definite ID. (Dickson 30/9) MIS-SORT.....SORRY!!!!!!!
- 3310 Uruguay. 2338. SP. Male DJ w. slow LA ballads. R. San Miguel??? (Wilkner 29/9)
- 3335 Papua New Guinea. R. East Sepik. 1103. PG. ID, MX, vocals, QRM de CHU (Paszkiewicz 2/9)
- 3366 Ghana. GBC2. 2240. EG. Lotto number given, "This is R. Two" ID. Signal was S-5 40db strenth, strongest Ive heard! (Schulze 16/9)
- 3725 Clandestine. R. Venceremos. 0300. SP. 2 OM w/ alternate talk. No //s. (Allen 7/10)
- 4000 Cameroon. RC Bafoussam. 2249. FF. Mix of highlife mx and talks by OI. RC ID and SO preceded by march-type NA. (D'Angelo 29/9) (Atkins 6/10) & (O'Brien 5/10)
- 4250 China. CPBS-II. 1550. CH. Playing 1920's type mx on an electric guitar, band mx, ute QRM. (Park 12/9)
- 4330 China. Fujian Front Sta. II. 1650. CH. Vaudeville type comedy by two men (Park 16/9)
- 4718 USSR. Mayack. 0955. RR. Instr. mx, TC's, Mayack IS. (Bobb 30/9)
- 4740t Afghanistan (??). R. Afghan. 0125. Weak w/ flute IS, possible NA at 0127, talk to 0130 (Alexander 6/10)—look below, its probably Cuba OM!!
- Cuba. Mayack. 0152. RR. Classical mx. Not noted on usual 4765 but spurs also on 4715, 4690, and 4665. (Daly 29/9)
- 4760 Liberia. EUNA. 2145. EG. Letters from Afro listeners, hymns, VOA nx at 2200. (Thunberg 17/9)—Thanks Bob! (Dillon 14/9)
- 4760 Swaziland. TWR. 0319. Vern. African choir mx (Paszkiewicz 26/9)
- 4770 Nigeria. FRCI Kaduna. 2230. EG. Rock mx and ad's, PSA "What have you done for Nigeria?? Pay your tax now!!". (Dillon 14/9)
- Venezuela. R. Mundial Bolivar. 0205. SP. US and VY vocals, slogans "La emisora de la buena suerte, Mundial Bolivar siempre en sintonia", nx, chimes, etc. (McLemore 8/10) (Bobb 2/10), and (Dillon 15/9), and finally (Dickson 14/9)!!
- 4775 Peru. R. Tarma. 0340. SP. M&F vocalists, echo effects, etc, SC around 0452 (Jordan 28/9)
- 4780 Venezuela. LV de Carabobo. 0045. SP. Lively LA pops and TC's (Dickson 27/9)
- 4783t Egypt. R. 2300. African mx (8/10 O'Brien)
- 4785 Columbia. Ecos del Columbia. 0040. SP. Ballads and up-beat mx. "Super Radio" slogans. (Jordan 4/10)
- 4790t Pakistan/Kashmir. Azad Kashmir R. 1641. M&F airing various SEAsian type songs, some arab flap, tent ID at 1658, no time pips. (Park 9/9)
- Peru. R. Atlantida. 0436. SP. LA mx with an andean sound, Natl anthem by large group. (Snerpe 22/9), (O'Brien 26/9)
- 4795 Cameroon. RC Douala. 2100. EG/FF. Nx in EE and then into FF. (Hill 21/9)
- 4805 Sao Tome E Principe. 2235. PT. Reactivated, noted w/PT and US pops (inc. MacArthur Park), PT anncr and gong at SO. (Atkins 13/9)
- Brazil. RD Amazonas. 0105. PT. Pop mx, tc's, showtunes (Dickson 29/9) (Paszkiewicz 2/9), and (Dillon 14/9)
- 4810 Gabon. Af1. 2036. FF. Interview w/ magician, ID by DJ (Dillon 14/9) (Hill 21/9)
- Galapagos Islands. LV de Galapagos. 0155. SP. Organ instr, ID @ 0213, NA to SC. (Atkins 3/10)

- 4820 Honduras. LV Evangelica. 1129. SF. Mary ID's, chimes, and music(Bobb 10/9)(Dillon 8/9)
- 4825 Brasil. R. Educadora. 0148. PT. Fast talk by OI, ID at 0159, soft music("Around the World I searched for You").(D'Angelo 7/9)
- 4832 Costa Rica. R. Reloj. 0415. SP. Ballads and lively vocals(Zordan 26/9)(Dillon 8/9)
- 4825 Guatemala. R. Tezulutlan. 0115. SP. Local style mx, marimbas, etc(Dickson 17/9)
- 4840 Venezuela. R. Valera. 0205. SP. Latin vocals, ID at 0208 followed by male singer, news at 022E.(D'Angelo 7/9)(Dillon 15/9)(O'Brien 27/9), and(Dickson 15/9)
- 4845 Brasil. R. de Manaus. 0020. PT. Two men coverage of presumed soccer game, hysterical play by play w/ long echo effect(Jordan 26/9)(Dickson 18/9), & (Dillon 8/9)
- 4850 Cameroon. RC Yaounde. 2103. EG. EE newscast, ID at 2108 "This newscast comes to you in the Nat'l Svc of Radio Cameroon", return to highlife mx and FF comments. R. Moskov covers //9745.(D'Angelo 15/9)(Hill 22/9)
- 4850 Costa Rica. R. Columbia. 0145. SP. Brassy LA mx, on DJ(Dillon 8/9)(Dickson 14/9)—(do you guys work together??—ed)
- Venezuela. R. Capital. 0625. US pops/rock(Tina Turner, at al)(Alexander 14/9)
- 4853 Yemen. R. San'a. 2212. AA. On late w/ OM talk and recitations(Daly 28/9)
- 4870 Benin. ORTB. 2245. FF. Music, ID w/ NA(Hill 24/9)
- Ecuador. R. Rio Amazonas. 0245. SF. Musical programme, several ID's(Field 1/10)
- 4875 Brasil. RJ. Boa Vista. 0230. PT. Musical programme. ID at 0331(Field 9/10)
- 4885 Columbia. Ondas del Meta. 0350. SP. OM w/ annts, ID and brief orch mx(Jordan 30/9)
- 4890 Ecuador. R. Centinela del Sur. 0150. SF. EZL and latin pops(Dickson 14/9)
- Senegal. Dakar. 0700. FF. DETAILS PLEASE!!!!!!(Hill 7/9)

- Thanks again to the contributors this month!!!
- Recieved a number of late logs last month. This column is typed and mailed within 24 hours so I wont include late logs. Please watch the deadline. In the "I hate to sound like a broken record" department I am still recieving some logs without any names on them. Please make sure your name is on all slips and I'll give you proper credit, etc.
- I dont guess we'll be hearing from the V. of Hope from Lebanon for a while. Saw on TV last nite the rubble of whats left of the building.
- To close it all out this month. Happy Thanksgiving to all our US members and Happy Remembrance Day and a belated Happy Thanksgiving to all fellow Canadian members! 73's until next time.....

mw —



## The Woodpecker Project

T-shirts - US\$10 postpaid      Sizes: S - M - L - XL  
 100% cotton - emblem printed in red & black on white

Order from: ANARC OTH Radar Committee  
 1634 - 15th St. NW  
 Washington, DC 20009 USA



# LOG REPORTS

## section B

4900 to 6199 kHz

Editor: Jerry Berg, 38 Eastern Avenue, Lexington, MA 02173

- 4905 BRAZIL R. Araguaia, mx from 0145 on 10-3, to 0304\*, very weak; then R. Relogio (Field-MT).
- 4910 ECUADOR Daisora Gran Colombia, talking by gal at 0126 9-15, panel discussion from Quito, fair sig (Dillon-MD); 0200 on 10-9 with ID and nx, excellent sig (Field-MI); very good at 0245 in 9-15, nx on Contadora, Weinberger, etc.; mx, ID 0250 (Dickson).
- 4911 VENEZUELA R. Carora, alternate talk by man and gal at 1123 9-20, man with IDs and TCs, chimes, good level (Allen). Sure of this? This one has long been inactive (JB).
- 4915 BRAZIL R. Anhanguera, EZL mx 0200 on 9-24, pops, ballads, ads, fair to good in wx QRN, ID 0207, 0213 (Dickson); ID 0825 10-8, accordion mx, YL vocals (O'Brien-NY).
- 4915 GHANA Accra, FR Sunday religious svc at 2215 on 9-22, strong, equal to ANO (Daly-NY); EG nx 2246-2254, ID, African vocals; talk at 2259, choral mx to NA and 2304\*, poor overall on 9-5 (D'Angelo-PA); EG 2245 9-15, good (Alcorn-NJ); vernac/EG at 0550 on 10-6, choral mx, ID in EG and TC for 6:00, then half hr of EG nx (Allen).
- 4920 AUSTRALIA ABC-Brisbane, history of Frank Sinatra at 1116 8-7 (Feeley).
- 4920 ECUADOR R. Quito, "LV de la capital" 0200 9-17, big sig, nx, ads, canciones de la tierra, TCs (Dickson); ID 0405 9-22, instr.mx, nx, earthquake brief, bank ad (Sharpe-CA).
- 4925 ECUATORIAL GUINEA Bata, closing with NA at 2300 on 10-12 (JB).
- 4930 HAITI 4VEH, 0916 9-8, rel.mx, ID, talk, good (Dillon-MD). Not hrd FMs lately (JB).
- 4945 COLOMBIA Caracol Neiva, mx 1030 9-15, telecons, ID, mx Colombiana, fair (Dillon-MD).
- 4950 CLANDESTINE Voz de Verdade, mx, EG vocals, references to Angola, 0329 10-5 (Field-MI).
- 4955 BRAZIL R. Marajoara, 2345-0015 relig. prgm, singing IDs at 0000; 9-15/16 (Plum-NJ).
- 4960 ECUADOR R. Federacion, tent., strong 0130 9-27 with EZL mx, RTTY QRN (Dickson); also tent. 1045 9-15, very poor with monologue, poor audio, fading, Beijing QRN (Dillon-MD).
- 4965 BRAZIL R. Poti, EZL mx 0215 9-6 (Dickson); ID 0233 on 10-9, mx followed (Field-MI).
- 4966 PERU R. San Miguel here in AMs, s/on was 0913, then 0900, now pre-0900; opens with NA, full ID, into fast-paced OA mx prgm; generally poor, but tolerable on a good day (JB).
- 4970 VENEZUELA R. Rumbos, LA pops 2318 9-15, ID by man DJ, TC, bells, fanfares (Dillon-MD).
- 4980 VENEZUELA Ecos del Torbes, lively LA mx 0250 9-8, big bands, TCs, good sig (Dickson); two annrcs 1015 9-26, rapid fire speech, electronic effects, very good (Jordan).
- 4990 NIGERIA Lagos, fair-good with 2305 EG nx, choral anthem to 2307\* on 9-30 (Wilner).
- 5000 CLANDESTINE R. 15 de Septiembre, here 0410 10-6, //5570, IDs, combat reports, WWV QRN but no het (Allen); tent. then 0448, yelling, speeches, sirens, QRN (Daly-NY).
- 5005 SARAWAK Presumed Sibn, usual soft Malay-style prgmng 1045 10-6, pips 1100, weak (JB).
- 5010 CAMEROON Garoua, vernac talk 0520 on 10-6, talk, unmelodic native mx, good sig (Allen).
- 5010 PERU R. Eco, lively local mx 0250 on 9-17, ads, TCs, romantic mx, F-G in QRN (Dickson).
- 5015 BRAZIL Tent. R. Cultura, 0155 10-2, lively mx under hvy QRN; not HC (Jordan).
- 5015 ECUADOR Esc. Radiofonias Populares, live remote of Andean group 0544 9-15, stn ID 0556, back to studio with canned LA mx; closing IDs, NA 0606, 0608\*, exc prgm (Tutak-NJ).
- 5020 NIGER Niamey, Afr mx 2229 9-14, short armts, flute, NA, 2302\*, fair (Daly-NY); NA 0529, s/on armts, into Koran 0531, FR talk 0536, fair (Tutak-NJ); FR nx 0600 9-7 (Paszkievicz).
- 5020 SOLOMON ISLANDS Honiara, RA nx 1000 9-14, Milo ad, local nx, EG/Pidgin; poor (Hill-MA).
- 5020 VENEZUELA R. Nacional, 0120 9-23, LA pops, ID by gal 0130 (Dickson); EZL mx 0034-0100 10-2, MAW talking, ID, fair-good (Bobb-MN).
- 5022 CUBA R. Rebelde, down from 5025 0340 10-5 with RNE pop mx transcription, VG (Sheedy-CA).
- 5030 PERU R. Los Andes, ID at 0100 9-25, mx, LA tunes (Alcorn-NJ); LA ballads 0110 10-6, MAW annrcs, ID (Alexander-PA); EZL mx 0220 9-1, ads, TCs, ID 0236, strong (Dickson).
- 5035 CENT.AFR.REP. Bangui, anthem 0427 9-21, drumbeats 0428, "Tci Bangui" ID, s/on armts, march mx 0430, into possible FR nx, synthesizer notes between items (Tutak-NJ).
- 5039 SUDAN Tent. Omdurman, weak 0400 9-30, presumed AR, weak but steady, chants, rapid tlk, flutes 0417 (Jordan); tent. 0417 9-21 with AR talk, flute phrases, Koran 0423, poor (Tutak-NJ).
- 5040 ECUADOR LV del Upano, mx 0045 9-28, nx 0105 to s/off (Field-MI); clas.mx, talk, NJ. ID 0143, good sig, to 0153\* on 10-7 (Trotto-FL); 0140-0156\* 9-21 with man talking, nx, NA, fair sig (Bobb-MN); lengthy ID 0148 10-2, close out song, 0152\*, strong signal (Jordan); mx 0150 9-3, ID and address 0153, NA, "Ode to Joy" to 0156\* (Dickson).
- 5047 INDONESIA RRI-Jogjakarta, Straus mx 1610 on 8-8/9/16, RRI IS 1659, nx, local mx (Schulze).
- 5049 COLOMBIA LV de Yopal, 0030 10-14, RJ mx, talks, Todelar ID 0059, local ID, NA, 0103\* (JB).
- 5052 SINGAPORE R. Singapore, EG nx 1300 on 9-20, pop mx, fair sig (Zilmer).
- 5055 OOSTA RICA TIPC, "Songs in the Mite" EG prgm 0345 9-21, EG annrc as 0300, //1180, 6175, 9645, 97.1 (none hrd), into SF 0400; fair sig, TWR IS on at 0356, QRning (D'Angelo-PA).
- 5055 SWAZILAND TWR, handbell IS 0355 9-14, EG ID, into GM, EG 0430, fair under on-late TIPC (McLemore-FL); EG 0430 9-7, fgy armts by gal, relg.talk, weak under TIPC (Hill-MA).
- 5063 ECUADOR R.Nac.Progreso, poor at best 0210-0245 10-2, mixed bag mx, ID, TCs, promos
- 5066 ZAIRE R. Candip, vernac 0340 on 9-8, Afr folklorica mx (Schulze). (Jordan).

- 5095 COLOMBIA R. Sutatenza, LA mx 2317 9-28, TC, fair in usual CW QRM (Dillon-MD); ID at 0200 on 9-30, iZL mx, radio skit with dramatic mx interludes, very good sig (Jordan).
- 5120 PERU R. Mundo tent., undermodulated instr.mx, man anncr, vy poor, 0058 10-6 (Allen).
- 5200 PERU R. Imagen, US rock and SP vocals 0404-0430 9-29, ID as "Imagen, 15 minutos" 0415, strong QRM (Plum-NJ); 5199, tent. them 0746 10-6, MoR vocals, TC, no ID, hvy QRM (Allen).
- 5256 INDONESIA RRI-Sibolga, pops 1630 9-1/14, ID 1630, Jak nx 1700; to 1845 (Schulze).
- 5265 CHINA Fujian Front Stn, CH mx 1158 9-29, pips, ID by man 1200 (Prath-FL).
- 5451 PERU R. Vision, "Mx Tropical" prgm 0325-0357\*, "R.Vision, la grande" IDs; 9-28/29 (Plum-NJ).
- 5900 CHINA Fujian Front Stn, \*0954 9-28, IS, ID ment. Taiwan, mx, tik, pips (Dillon-MD). NJ.
- 5910 BELGIUM BRT, punk rock 0035 9-29 in EG prgm, "Focus on Eur.", "POB 26" (Dillon-MD).
- 5920 USSR R. WS Khabarovsk, EG "Sov way of Life" 1648 9-23, prgm preview, poor (Park-HI).
- 5930 CZECHOSLOVAKIA Prague, EG 0300-0357 10-2, ID, nx, local nx, fair-poor, //7345 (Jordan).
- 5950 FRANCE RPT, accoridian mx 2357 9-28, ID, pipe, world nx, very good, all FR (Dillon-MD).
- 5950 GUYANA GBC, gospel mx 0924 9-8, "Deliverance Time" after ID, all EG (Dillon-MD).
- 5955 COLOMBIA LV de los Centauros, SP mx 1045 9-29, yipping, man with echo, ID (O'Brien-NY).
- 5965 BRAZIL R. Guaiaba, talk 2320 9-18, IDs, light mx, fairly good but muffled audio, smashed by RCI-5960 2330 (D'Angelo-PA); tent., Br nx 1012 9-28, TC, vy poor, fading (Dillon-MD).
- 5965 ENGLAND BBC, good with world nx 1204 10-4, Jazz mx, lstd to 1230 (Bonnet-IN).
- 5965 MALAYSIA KL, Koran 1110 9-24, desert rhythms, pops, Malaysian nx after ID, F-G (Atkins-CA).
- 5975 COLOMBIA R. Macarena, LA mx 1029 9-28, "La hora de R.Mac" ID, TCs, VC (Dillon-MD). AL.
- 5985 BURMA BBS, EG SEA nx 1445 10-1, IDs 1450, 1459, wx, sports after 1500, F-G (Sheedy-CA).
- 5985 USA WYFR carrying VoFC, 0110 9-22 EG nx, cmtry, mailbag, CH lessons, vy good (Dillon-MD). 0125-0200 10-1, CH cooking, lively CH mx, very good signal (Bonnet-IN).
- 6000 AUSTRIA Vienna, IS \*0000 10-2, ID, GM nx, cmtry, piano mx (Jordan).
- 6000 ENGLAND RCI over BBC, EG, quick ID 2240 9-26, "As It Happens," F-P to 2255 (Trotto-FL).
- 6005 CANADA CFCA-Montreal, poor 1204, nx, ads (Nagel-PA); fair 2038 9-15, Asc.QRM (Dillon-MD).
- 6005 ENGLAND BBC, to CAW Afr, EG 0330 9-26, P-F with pol.talk, mx, //9410-VP, 9600F-C (Jordan).
- 6010 PERU R. America, gal with long talk 0830 10-9, Reloj QRM (O'Brien-NY).
- 6012 ANTARCTICA AFAN-McMurdo, ID as "AFAN Radio" and "Armed Frcs Radio" 0808 9-10, mention of 100.1 FM, gave profile as rock, DJ Wild William (Stone-WA); pops, man anncr, usual format 0915 9-29, "This is American Forces Radio from McMurdo," fair w/QSE (Allen).
- 6015 NICARAGUA Voice of Nic, s/on in SP 2305 9-19 (Alcorn-NJ); EG nx 0115 9-22, excerpts from CIA manual (Dickson); local mx 0400 9-26, ID, all SP, fair-good (Jordan).
- 6015 NORWAY Oslo, \*0400 9-9, IS, ID, fgye, male anncr, "Norway Today," fair (Trotto-FL).
- 6015 VATICAN Vatican Radio, in FR at \*0030 10-2, into EG "Talking Point" 0052 (Jordan).
- 6020 CUBA Havana, \*0400, SP, pips, nx, mx, //6060-F, 9730-VG, 11815-inaudible (Jordan).
- 6025 BOLIVIA R. Illimani, SP nx 0935 9-16, mx, farming nx, "LV de Bolivia, R.Illimani (Plum-NJ).
- 6025 MALAYSIA KL, CH at 1412 9-16, CH pops and clas.mx, ID and nx (Sharpe-CA). NJ.
- 6060 AUSTRALIA RA, "60 Seconds" 1123 9-26 (Nagel-PA); 1359\* 9-25 due to strike (Park-HI).
- 6065 USA WYFR carrying VoFC in EG 0210 9-23, rpt on Saudi oil pact, //5985 better (Alcorn-NJ).
- 6070 CANADA CFRX-Toronto, comedy 0020 9-15 (Bobb-MN); oldies 0045 9-6, exc sig (Dickson).
- 6075 ASCENSION IS. BBC WS relay, "Sports Intl" 0252 10-1, nx, poor, 0330\*, //6175 (Park-HI).
- 6080 AUSTRALIA RA, nx cmtry 1220 10-1, Aussie mx (Bonnet-IN); IS 1245 9-27, strike (Thunberg).
- 6080 JAPAN Tokyo, \*1300 in CH on 9-7, IS, ID by gal in JP, man in IG, into CH (Trotto-FL) PA.
- 6085 ANTIGUA DW, fair at 0500 9-9 with IS, ID, GM nx dateline-style (Park-HI).
- 6085 SOUTH AFRICA R. RSA, EG ID at \*0300 9-7, jamming splatter from 6065 (Schulze).
- 6088 NIGERIA Kaduna, 2245-2258\* 9-5, Hausa talk, recitation, off air suddenly (Bobb-MN).
- 6095 PORTUGAL Lisbon, 0030 on 9-12 in EG, only able to ID, hvy QRM from Havana (Feeley).
- 6100 CUBA Havana, EG nx 0105 9-6, local quality signal as usual (Dickson).
- 6100 YUGOSLAVIA R. Belgrade carries R. Ljubljana on Mon, hrd 2100 on 10-14 with local lang nx, then GM nx 2115 and EG nx 2120-2125. "This is R. Ljubljana." (JB).
- 6110 HUNGARY Budapest, \*2130 with IS, s/on ID in Hungarian, nx, //6025; 9-15 (Prath-FL).
- 6115-18 COLOMBIA LV del Llano, EZL mx 0215 10-1, IDs, TCs (Jordan); 1036 9-8 with cmtry, shampoo ad, ID 1059, bell, pop mx (Dillon-MD); 1049 9-7, ID, ads, fair with het (Bobb-MN).
- 6120 CANADA BBC WS relay, ID 0000 9-10, world nx, "Tx About Britain," fair w/het (Dillon-MD).
- 6125 GDR RBI, 0115 9-6 in SP to LA, nx, ID 0129 (Dickson).
- 6125 USA AFRTS, 1245 9-30 with CBS radio sports, ad, fair signal; NF? (Trotto-FL).
- 6130 ECUADOR HCJB, "MX Party Line" at 0718 9-18, poor with local QRM and QRN (Park-HI).
- 6130 USA VOA, news bits on quake at 0130 9-30, stocks, sports, mx, lstd to 0200 (Bonnet-IN).
- 6135 POLAND Warsaw, EG political talk at 2240 9-28, review of the week (Prath-FL).
- 6145 NETH. ANTILLES TWR-Bonaire, IS 0728 9-28, PT ID, into nx; fair (Park-HI).
- 6155 JAPAN FEN, nx and interview prgm 0922-0930 on 10-2 (Wilknr).
- 6155 PERU R. Pucallpa, hrd s/on with NA at 0900 or 1000 (didn't write down) on 10-19 (JB).
- 6155 ROMANIA R. Bucharest, gal in SP 0025 9-29, ballade, ID (Alexander-PA).
- 6160 CANADA CKZN-St. Johns, CBC nx 1008 10-1, little else coming in (Wilknr); rock mx 1027, contest, marine wx, CBC nx 1030, 9-8 (Dillon-MD); regional nx 1250, ad, 9-15 (Alcorn-NJ).
- 6160 CANADA CKZU-Vancouver, CBC Vanc orch 0628 8-21, CBC Radio ID 0659, nx 0700, wx, maritime wx, into EZL mx 0610, male host; good sig, but I was in trawler 30 mi from Vanc (Tutak-NJ).
- 6170 USSR RM, EG at 0104 10-1, nx, poor signal (Nagel-PA).
- 6175 ANTIGUA BBC WS relay, pips 0000 9-11, TC, ID, world nx, "Nx Abt Britain", //6120 (Dillon).
- 6175 COSTA RICA TIPC, SP 1210 10-5, SJ address (Prath-FL); fair, full ID 1239 9-30 (Trotto-FL).
- 6190 SWITZERLAND SRI, \*2230 9-30, IS, ID, TC, into EG, "Dateline Mon," good sig (Trotto-FL).
- 6195 ANTIGUA BBC WS, "Nx Abt Britain" 1109 9-10, "Waveguide" (Park-HI). ++ See you in Dec. *f*



# LOG REPORT

## section C

6200 to 11699 kHz

Editor: Peter Drizhal, P.O. Box 663 Oxon Hill, MD 20745

### ON THE WAVE:

Radio Monimbo and Radio Caiman operations of the CIA? One reporter suggests the possibility (see 6229.9, Wilkner)... Here's a mild rarity: not a single pirate logging this month in the typically saturated 7400+ range... The clandestine "Voice of Namibia/Radio Freedom" heard by Tom Daly (9595, 1944 EG, 9/21)... Alabama's Atkins spotted Mauritius' "MBC" at 9709.6 on October 10, 0220 GMT... September's UNID at 9457 was identified by two loggers this month: Wilkner (with his second mention in "O.T.W.") and also Kevin Trummel, who's a Spec. 4 in the U.S. army stationed in Miesau, West Germany. Writes Kevin: "I love African and Latin DX, also Spy #'s, tx stns, VOLMETS, and any other weird programming." Oh, by the way, the UNID 9457 was the Thessaloniki relay of Radio Macedonia, Greece, off frequency from normal 9460.

Now the logs...

- 6210 ECUADOR HCJB 0730 EG, "Happiness Is" pgm (Alexander-PA 9/29)
- 6229.9 EL SALVADOR R.Monimbó w/fr to p sig, 0032-0100, Xmtr located by the FCC stns in FLA, GA, & TX as 13°20' North & 89°44' West, placing it in El Salvador, according to the FCC. Pgm o/Monimbó is sim. to that of R.Caiman, 9960 (ID'd this month in "I-C" --ed.). R.Caiman, known as the "Nat King Cole" Stn. was previously located by the FCC as "just south of Guatemala City." It is easy to believe that both of these stations are operations of the CIA (Wilkner 10/2)
- 6249.7 EQ. GUINEA Malabo, non-stop highlife 2135-2145, then OM SP tx. "Transmite Malabo..." @2159, NA to 2102\*. Weak but improving to s/off (Atkins-AL 9/28)
- 6297v PERU R.Chota 0254-0311\* SP, U.S. pop w/SP lyrics; IDs, anc's, NA, then s/off 0311 (Thunberg-PA 9/25)
- 6305 CLAND. LV del CID 0851 SP, cmdy pgm; vg sig (O'Brien-NY 9/21)
- 6790T CHINA Taiwan-2 1045 CH(?) YL w/voice over instr mx, fr-g (O'Brien-NY 9/29) 1115 CH, OM w/steady tx, poss.ID @1130 and into CH mx, more tx (Prath-FL 10/5)
- 6890 CHINA CPBS-1 1045 CH, OM & child's voice, mx (O'Brien 9/29)
- 7075 ALBANIA R.Tr 2105 FR, nx, mx, cmtry //9480 (Prath-FL 9/15)
- 7120 ALBANIA R.Tr 0155\* EG, hrd s/off ID, NA; gd (Trotto-FL 10/6)
- 7125 POLAND R.Polonja 2250 EG, tx abt Holocaust //7270 (Prath 9/10)
- 7165 CHINA RB FS 1100 KR, IS, ID, nx //5975, QRM (Park-HI 9/10)
- 7170 NEW CALEDONIA RFO 1001-1050 FR, mx w/election results, TC's, ID; poor (Dillon-MD 9/29) 1050-1101\* FR, EG & FR pop mx, ID, fqcy, NA; sio 353 clear (D'Angelo-PA 9/4)
- 7175 Ukr.SSR R.Kiev 0215-0230 EG, Ukr. mx, mailbag, folk mx, //13605, best on 7175, some QRM o/w gd. (Dickson 9/3)
- 7190T YEMEN PDR(?) DYBS tent, 0404 AR, nx,tx, "waha" and "arabiyah" said sev.times; listed in WRTH table only;p (Park-HI 9/15)
- 7195 ROMANIA R.Buch. \*2100 EG, IS, hrd under "RM" (Prath-FL 10/5)
- 7195 USSR RM 1125-1200 CH, tx, Western pop sung in CH/ RS theme mx from "The Soviet Way of Life," RM IS (Dillon-MD 9/29)
- 7205 USSR R.MNAs 0150 EG, ezl mx, fqcy anmts, nx, Pres. of Finland visits USSR (Dickson 9/19)
- 7210 USSR Khabarovsk 1100-1120 RS, 1st pgm domestic svc; lit. narrative w/clasc mx interludes, ARO QRM (Dillon-MD 9/29)
- 7215 TURKEY VoT 1955 EG, s/on of EG to Euro; pr (Daly-NY 9/22) 2230-2245 EG, DX show, ID, Sprigsteen mx; gd (Trotto-FL 9/7) 2300 EG, s/on w/nx, rev. o/Tr- press //9560 (Prath-FL 10/5)
- 7220 UNID. 0412- EG, poorly modulated EG nx, rk mx (D'Angelo 9/21)
- 7270 INDONESIA RRI Jakarta 1340-1400 IN, ID, song of the Coconut Islds, into nx by OM at 1400 (Sharpe-CA 9/30)

7270 POLAND R.Pol.2230 EG, IS, ID, nx, cmtry (Paszkievicz 9/7)

7595 E. GERMANY RBI \*2030-2040 PT, IS, ID, nx; pr (Trotto-FL 9/7)

7295 MALAYSIA (Kajang) R.Mal. 1400-1430 EG, "Perspective" UN  
Radio feature, ID, some Euro-Am pop mx (Sharpe-CA 9/30)

7325 ENGLAND BBCWS 0000-0010 EG, wld nx, Brit.nx (Dillon-MD 9/12)

7345 CZECHOSLOVAKIA RP 2020 EG, mailbag pgm, mx (Alcorn-NJ 9/15)  
0100 EG, nx: arms race, US-USSR summit, ASAT tests (Dickson  
9/18) 0130-0157 EG, CZ Symphony mx, Opera tx (Bonnet-IN 9/29)

7375 ITALY RAI \*0350-0400 UKR, IS, ID, nx, fair sig. (Trotto-FL 10/3)

7400 USSR RM 0240 EG, tx: U.S. military-industrial complex,  
summit talks; good signal (Dickson 9/2) 2205 EG, nx, cmtry,  
//7175, 7195, 7205, 7320 (Prath-FL 9/14)

7410v ISRAEL KI 2025 EG, Happy New Year Greetings (Alcorn-NJ 9/15)  
0100-0110 EG, ID, Isr. nx //9535; f (Dillon-MD 9/10) \*0200-  
0210 EG, ID, fqcys, nx, good signal (Trotto-FL 10/6)

7480 USA VoA 2030 EG, SSB, Nightline Africa, VoA nx summary (9/15)  
2145 EG, intvw w/actress Lee Taylor Young (Alcorn-NJ 9/21)

7770 CHINA CPBS-2 1134 CG, Usual "W & M tnx to listeners" (hi)  
("hi?" --ed.); 1135 ID & more tx (ute QRM) (Park-HI 9/14)

8993 UNID. 0045 EG/SSB, flights into storm; airplane positions;  
storm observations --all for hurricane Gloria; one ID'd as  
"This is Miami" (Alcorn-NJ 9/25)

9027 CLAND. Vot Liberation of Iran 0414 Persian, anti-Khomeyni  
txs, some Mid-E mx. Apt s/off @0427, sio 353; @0431 a much  
weaker stn hrd (Vo Unity?) pres'bly; sio 1+51+ (D'Angelo 9/14)

9115 UNID. 0120 SP (in SSB), M in rapid SP; very spitted. Ment.  
of Managua (Alcorn-NJ 9/27)

9355NF CAMEROUN R.Cam. 2055 FR/EG, Afr. mx, wld nx in EG @2101,  
gd.sig. w/some ute QRM //4850 (Daly-NY 10/6) 2240-0002\* FR,  
tx & hifile mx, ID, NA; prob. mvd fr. 9745 bec. of  
QRMoscow (nice pun --ed.) covering that channel (in Camrn)!  
sio 353 (D'Angelo-PA 9/21) 2345-0001\* FR, vtry o/loc, FR  
and EG pop mx, ID, and short NA (Alexander-PA 9/28)

9360 SPAIN REE 0030 SP, ID, M & F ancrs alting (Alcorn-NJ 9/25)

9457v GREECE R.Macedonia, Thessaloniki relay (off fcgy fr.normal  
9460) 9/24 hrd sio 131 till 1730\* and agn \*1800; 9/25 hrd  
sio 332 w/YL in GK, ezl-mx, ID @1725, then flute, sheep  
bells IS once, off at 1726\*; either day no //11615 hrd  
(Trummel-FRG 9/25) 1959-2145 w/pgm o/xt mx, some jazz,  
Dave Brubeck (Wilkner 9/29)

9475 EGYPT R.Cairo 0310-0325+ EG, letter box, mx requests; f-p  
(Jordan 9/30) ...nx, xlt. sig. (Dickson 9/2)

9480 ALBANIA RT 1635 EG, rpt on folk festival in Alb.(Alcorn 9/28)

9490 USSR RM via Nikolayev 0200 EG ID into SP or PT (Daly-NY 9/22)

9510 CANADA BBCWS relay 1106-1130 EG, wld & local nx (Dillon 9/8)

9525 CUBA RHC 0715-0727 EG, intvw w/SWAPO ldr,mx;f (Trotto-FL 10/7)

9535 GUAM KTWR 1440-1459\* CH, M/W tx, quiet instr mx;p (Bobb-MN 9/19)

9550 LIBERIA VoA 0650 EG, "Daybreak Africa" (Trotto-FL 9/23)

9560 BULGARIA R.Sofia 2200 BG, IS s/on, ID, nx (Prath-FL 10/5)

9565NF SYRIA Damascus Radio \*2000-2020 EG, ID, nx, Arab,mx, press  
review; g sig. (Trotto-FL 9/16) 2000-2030 EG, per GH tip,  
ID, NA, Mideast nx, "Welcome to Syria;" fr-g (McLemore-FL 9/21)

9565 USA VoA Greenville 0502 FR, W w/nx, xcited DJ w/request show  
(Madonna, etc) (under DW in EG/FR) (Park-HI 9/17)

9580 AUSTRALIA RA 1131-1142 EG, sports rep't, singing ID, Dylan's  
"Trust Yourself;" good (Dillon-MD 9/8) 1200-1300 EG, Wld  
nx, stock mkt rep't, mxcl pgm, spt nx (Bonnet-IN 10/7)

9580 BRAZIL VoA relay 0210-0245 SP, wld nx, TC, sports, econ rpt,  
rpt on Mex. e-quake, ID //11950 (Dillon-MD 9/21)

9590 GUAM KTWR 1150-1213 CH, tx,hymns xcpts, ID,IS;p-f (Bobb-MN 9/9)

9590 NETH. ANT. RN 0250 EG, "Media Network" in Scandv. (Park 9/20)

9595 CLAND. Vo Namibia/R.Freedom 1944 EG, Afr.mx and chants till  
1959 ID "This is the Voice of Namibia and Radio Freedom.  
Thank you for listening. Good night." Fol'd by quick mxcl  
tune, anmt, 2000\*; vp sig fr. Ethip. std's (Daly-NY 9/21)

9600 CUBA RMWS relay 1143-1200 EG, mx qz px, mx by Georgian  
group '75,' good sig. (Dillon-MD 9/8)

9600 S.AFRICA RSA 0155 EG, s/on 0200, Afr.Today pgm (Alcorn-NJ 9/26)

9600 USSR R.Kiev 2335 EG, Tx: development o/Siberia (Prath-FL 9/10)

9610 CHINA R.Bei. 2200 SP, IS, ID, tx, mx, 222 (Zilmer 9/21)

9610 IRAQ R.Bagd. 2035 EG, nx: Iranian pilots desert w/copters;  
war reports fr/fw'd units (Alcorn-NJ 9/22)

- 9615 USA KGEI 0415 SP, M w/football, boxing & oth.sports;  
W annc; Bible show, QRM USSR 9620 & loc;p (Park-HI 9/16)
- 9620 YUGOSLAVIA RY 2118-2135 EG, nx, Sat. feat. on tourism, folk  
mx; 2130 FR ID & s/on. Ann'd new times effective 9/29  
@ 1530,1830,2000,2215 (D'Angelo-PA 9/21) \*0000-0010 SP,  
IS, ID, nx by M and F; good signal (Trotto-FL 10/1)
- 9630 SPAIN SFR 0045 EG, Panorama focus on SP artists, SP by radio  
at 0050 (Alcorn-NJ 9/17) 0100-0130 EG, wld nx, SP budget  
tx, Mex. quakes, Arts & Sculptors Society (Bonnet-IN 9/30)
- 9650 PAKISTAN RPak. 1314 VEN, local mx (Schulze-FRG 9/4)
- 9660 VENEZUELA R.Rumbos (Caracas) 0418-0445 SP, ID, LAm pop voc,  
fading in and out yet fully readable (Sharpe-CA 9/28)
- 9665 USSR R.Afghanistan relay 1901 EG, Ment. o/"Kabul Afghanistan"  
fol'd by cmtry criticizing U.S. involvement in Vietnam!!!  
--Do they really exrect people to believe such garbage as  
they continue to exterminate Afgh. people??.This fol'd by  
Arab mx til 1930 when dbl.ID, then off;p (Daly-NY 9/29)
- 9670 USA VoA Greenville 0340 EG, Q&A w/NASA spokesman; Gerschwin  
ftr., clip from Rudy Vallee Show;fr, QRM unid (Park-HI 9/29)
- 9680 AUSTRALIA ABC 0725 EG, Victoria Football Lge Champ. //9660,  
4920 & EPSN cable tv; Essendon beat Hawthorn (by what score?  
--ed, asking trivial qtn) local QRM (Park-HI 9/28)
- 9685 USSR R.Vilnius 2210 EG, Listeners Letters (Prath-FL 9/28)
- 9695 USA KGEI 1400-1415 RS(?), ID & locale;g (Trotto-FL 9/19)
- 9700 CHINA RB FS 0937 EG, Asian nx, "News abt CH" (Park-HI 10/1)
- 9705 MEXICO RMI 2330 SP, Ctnous rpts & info on e-quake, many  
phone #'s and names //15430 (Prath-FL 9/21) 0015- SP,  
tx abt families affected by quake, messages, phone #'s;  
gd.recip (Dickson 9/22) 0710-0725 SP, hrd ancrs taking  
phone call from AZ woman, gave phone # and oth.calls taken;  
quick ID; good signal (Trotto-FL 9/23)
- 9709.6 MAURITIUS MBC 0220 subcnt.mx at nice level, clear "MBC" by  
EG YL just prior to wipe-out by Tirana @0225. Amazed to  
hear them this well after digging them out of the muck last  
year (Atkins-AL 10/3)
- 9715 ASCENSION ISL. BBC relay 1956-2010 EG, ID, nx for Afr. (Bobb  
-MN 9/21) 2016-2030\* EG, "24 Hours;" s/off w/fqcy to tune  
to later (local QRM/QRN) (Park-HI 9/26)
- 9725 KENYA VOK GOS 1909 EG, Afr & wld nx, usu o/of tune band mx,  
then a capella choral singing; ID & sports (Park-HI 10/1)
- 9730 CHINA R.Bei. 1300 EG, nx, CH nx, sports, cmtry //9550  
sio 343 (Zilmer 9/18) 1441 EG Listeners Letterbox (9/26)
- 9780 SPAIN REE 1935-1945 EG, SP nx, wld nx, ID (Dillon-MD 9/14)
- 9820 GUAM KTRW 1300 JP, IS, ID, tx, mx; sio 252 (Zilmer 9/27)
- 9870NF ECUADOR HCJB 0308-0335 EG, "Hour of Freedom" rel.pgm.,  
"Songs of the Night" @0330, xl sig, //6095 (McLenore-FL 10/7)
- 9870 GUAM KTRW 1330 EG, Science and scripture; 252 (Zilmer 9/27)
- 9895 NETHERLANDS RN 0128-0225 EG, ID, IS, TPS, wld nx, Newsline,  
Shortwave Feedback //6020(good) poor (Dillon-MD 9/29)
- 9905 GREECE VoG 2345 GK, GK voc.mx, ID (Alcorn-NJ 9/24)
- 9925 BELGIUM BRT 0020-0050 FR/EG(\*0030) 50's pop mx, tx abt  
Angola & Cent.Afr; mx; fr w/mod. QRM (Dickson 9/18)
- 9960 CLAND. R.Caiman 0002-0010 SP (see also 6229.9 --ed.) now  
w/voice anmts, ID, M.Jackson's "Beat It," anti-Castro  
remarks; tnx to S.Paskiewicz for the tip (O'Brien-NY 9/29)  
0015-0045 SP, many mnts of Cubans; f (Bobb-MN 10/5)
- 9960 MEXICO R.Guaymas 0056-0100\* SP, EG mx selxn, then ID in  
SP and EG; exl signal (Giella-TX 10/10)
- 9960 UNID. Generic, "Nat King Cole" Stn. (this is the now-ID'd  
R.Caiman, right? --ed.) 0000-0030 no tx, all mx format,  
mx'd bag of SP and US mx; strong sig. (Jordan 9/26)
- 9977 N.KOREA R.Pyongyang 1106-1110 EG, nx; p (Nagel-PA 9/12)
- 10040 VIETNAM VoV 2050-2055\* EG, W discussing accomplishments  
of VT; poor signal (Hill-MA 9/6)
- 11605 ISRAEL KI 2230 EG, s/on w/nx, tx //11655,7412,9435 (Prath  
-FL 9/28)
- 11620 INDIA AIR 2005 EG, nx, ID, fol'd by cmtry on Punjab Region,  
gd. (Daly-NY 9/27) 2220 EG, Indian vocals, instr.mx, ID,  
adr, schedule (Paszkiwicz 9/12)
- 11675 USA VoA (Gr) 0030 EG, Rock & Roll, nx; 343 (Zilmer 10/4)

This was a relatively slow logging month --every new log received has  
been included. Till next. Good-day,

*Peter Drighl*



# LOG REPORT

## section D

### 11700 and above

Editor: Wallace C. Treibel, 357 N.E. 149 St., Seattle, WA 98185

- 11710 CANADA RCI in EG 2320-2330\*, rpt on Nova Scotia (Alcorn NJ 9/19)
- 11710 ARGENTINA RAE in EG 0105-0114, nx, f-p (Nagel PA 8/27)
- 11720 CANADA RCI in EG 2212-2300, political pgm, call-ins, mx (Bonnet IN 9/29)
- 11730 NETHERLANDS RX in EG 2045, "Happy Station" pgm, //11740, 9540 (Prath FL 9/15)
- 11745 BRAZIL Radiobras in EG 0200, mailbag, cultural & economics tlks (Alcorn NJ 9/23)
- 11755nf? ALBANIA R. Tirana in SP 0047-0050\*, NA, ID, p (Trotto FL 9/29)
- 11790 USA KCBI Dallas in EG (Radio Earth relay) in EG 1902-1919, astronomy pgm, g (Nagel PA 9/15) 1800 in EG w/country mx (Dillon MD 9/28, D'Angelo PA 9/8)
- 11800 AUSTRALIA RA in EG 1100, world nx, stock market rpt, pop mx (Zilmer NM 10/4)
- 11815 CUBA RHC in SP 0130, int'l mailbox, mx, pen pal addresses (Dickson OH 9/9)
- 11820 ASCENSION IS. BBC relay in EG 1816, "Newsdesk", //11955 (Park HI 9/22)
- 11860 CHINA R. Beijing in EG 1130, "The Land & the People", g (Nagel PA 9/13)
- 11870 BULGARIA R. Sofia in AR 1902-1929, world nx, e2l interlude, pop mx, ID (Dillon MD)
- 11875 JAPAN RJ in EG 0016-0030, economics tlk, GNP, protectionism, p (Dickson OH 9/19)
- 11900 NO.MARIANAS KYOI Saipan in EG 1120, top 40 mx, ads, p (Park HI 9/14)
- 11905 ITALY RAT in IT 0015-0035, conjugation of verbs, IT lesson, f (Dillon MD 9/29)
- 11910 HUNGARY R. Budapest in SP \*2210, IS, nx, tlks, //9835 (Prath FL 9/28)
- 11925nf USA KCBI Dallas (R. Earth relay) in EG 1800-1900\*, ID, "Jazz Connection", ads, vg (McLemore FL 9/29) phone-in pgm 1750, nx 1800, mx (Stuart OK 10/8)
- 11935 UNITED KINGDOM R. Canada relay in UK 1527, tlk, ID, into FR 1530 (Trotto 10/7)
- 11945 CANADA RCI in EG 2135-2159, "DX Digest", g (Nagel PA 8/31)
- 11945 SWEDEN RSI in EG 1610-1615, ID, DX pgm, p, QRM from BBC (Trotto FL 9/10)
- 11960 CANADA RCI in EG 2214-2230, "The World at Six", ID, g (Trotto FL 10/1)
- 11970 CHINA R. Beijing in SP 2101, ID & "noticias nacionales", //15105 (Park HI 9/22) also in EG 0014-0017, interview of Beijing Teachers U. prof. (Simms NY 9/30)
- 11975t CLANDESTINE V. of the Libyan People in AR 0406, Qu'ran reading, ID (Park HI 9/15)
- 12000 NORTH KOREA R. Pyongyang in EG 0602, NA, pgm preview, nx, QRM VNG (Park HI 9/11)
- 12015 CHINA R. Beijing in CH(p) \*1202-1220, IS, ID, nx?, inst mx, p (Jordan PA 10/1)
- 12015 AUSTRIA ORF in EG \*1500-1515, IS, ID, nx, tlk, address, f (Trotto FL 9/16)
- 12040 USSR RM(Peace & Progress) via Sverdlovsk in CH 1029, IS, ID, tlks (Park HI 9/17)
- 12040 UNITED KINGDOM BBC "Calling Falkland Is." in EG \*2130-2201\*, tlks (Jordan 9/24)
- 12050 USSR RM via Khabarovsk in EG 1922, pgm guide, p (Park HI 9/21)
- 12055 SYRIA R. Damascus in EG 2000-2058\*, nx, TC, semi-classical mx, exc (Dickson OH)
- 13605 USSR R. Kiev via Khabarovsk in EG 0215-0300, IS, pgm preview, nx, UK folk mx, (Park HI 9/30, Dickson OH 9/9)
- 13725 ISRAEL Reshet Bet in HR 2133-2305\*, classical mx, phone-ins, time pips, nx, ID, apparent ads, NA, //11585 stronger & steadier (D'Angelo PA 9/10)
- 14300 MEXICO ELXL(amateur) 2300-0300 in EG/SP, national emergency net handling messages out of Mexico after quake, in contact with Mex embassy in DC (Alcorn NJ 9/21)
- 15010 VIETNAM VOV in JP 2217, traditional & revolutionary mx, p (Park HI 9/28) also in 1810-1827, "What do you know about Vietnam" contest, folk songs (Sharpe CA 9/29)
- 15060 SAUDI ARABIA BSKSA in AR 1420-1440, AR mx, ID, nx, tlk, f (Trotto FL 9/29)
- 15105 ANTIGUA D. Welle relay in SP 2311-2340, sports, GM mx & lessons (Dillon MD 9/21)
- 15110 CZECHOSLOVAKIA R. Prague in EG 1800, rpt on anti-apartheid movement on campuses in USA (Alcorn NJ 9/15)
- 15115 PORTUGAL R. Free Europe in EG 1914-1936, ID, mention of NY Times, g (D'Angelo PA)
- 15140 CHILE R. Nac. de Chile in SP 0050-0105, e2l non-stop mx, tlks, ID, f-g (Bobb MN)
- 15155 ECUADOR HCJB in FR 0105-0115, ID (Hill MA) in EG 0119-0130, Andean mx (Bobb MN)
- 15190 SWEDEN RSI in EG 1230, nx, "Sweden Calling DX'ers", repl 11920 (Zilmer NM 9/17)
- 15200 BRAZIL R. Nac. de Amazonia in PT 2007-2030, long tlks, BR pop mx, ID (Sharpe CA) also in PT 2037, Amazon, phone-ins, enjoyable mx, //11780 (Sheedy CA 9/22)
- 15220 SOUTH AFRICA RSA in EG 1107, continental nx, "POB 4559", vp (Park HI 9/29)
- 15220 TURKEY VOT in Lang 1456, long Eastern-type mx, fluttery sig (O'Brien NY 9/24)
- 15240 YUGOSLAVIA Belgrade in EG \*1430-1440, IS, ID, world nx, g (Trotto FL 9/16)
- 15245 NORWAY RNI in EG 1400, nx, "People & Places in Norway", f (Zilmer NM 9/22)
- 15245 PORTUGAL D. Welle relay in GM 1215-1225, IS, ID, nx, f (Trotto FL 10/4)
- 15250 ROMANIA R. Bucharest in EG 1524-1526\*, ID, mx, IS, f (Trotto FL 10/2)
- 15265 FINLAND RF in FN 1649, IS followed by religious pgm, g (Vadino WA 9/1)
- 15265 USSR R. Moscow via Kenga in EG 0430, nx brief, pop mx show, p (Park HI 9/17)
- 15305 NORWAY RNI in EG 1310, rpt on Statoil platform and other matters (Alcorn NJ 9/22)
- 15307 GUINEA Conarky in FR 2147, guitar mx, //4910 (Daly NY 9/22) in vern 1400 w/tlk and mx, later on in FR, f (Zilmer NM 10/3)
- 15320 AUSTRIA ORF in EG 1230, "Austrian SW Panorama" (Prath FL 9/11)

- 15320 AUSTRALIA RA in EG 0035, mx by Philly's own hooters, TC, ID (Alcorn NJ 9/18) also in EG 0000 w/world nx, tlk about history of pipe organs in Australia (Dickson OH)
- 15320 UNITED ARAB EMIRATES R. Dubai in EG 1600, Zionism & the individual, f (Zilmer NM)
- 15330 MOROCCO RTM Rabat in AR 2030-2055, middle-Eastern mx, f (Hill MA 9/22)
- 15335 ROMANIA R. Bucharest in EG 1500-1505, IS, ID, fqys, nx, p, QRM RTM (Trotto FL)
- 15335 ISRAEL Kol Israel in FS \*1530-1535, IS, ID, nx, p, QRM Bucharest (Trotto FL 10/2)
- 15345 ARGENTINA RAE in EG 1245, sports bulletin, local mx, headline nx, f (Zilmer NM) also in EG 2125, cmtry on justice of people, human rights, mx (Alcorn NJ 9/9)
- 15385 CHINA R. Beijing in EG 0000, tlk on reforms in socialist system (Alcorn NJ 9/24) also in EG 0030, tlk on industry & world trade, CH symphonic mx (Dickson OH 9/24)
- 15390 UNITED KINGDOM BBC in EG 1233-1246, tlk abt country mx, f (Dillon MD 9/29)
- 15390 ASCENSION IS. BBC relay in EG 2153, "BBC Calling the Falklands", p (Park HI 9/24)
- 15390 EAST GERMANY RBJ in EG 1815, nx, cmtry, mx, beam. to Africa, f (Zilmer NM 10/3)
- 15405 WEST GERMANY Dw in Urdu \*1430-1440, IS, ID in EG, tlk, nx, f (Trotto FL 10/7)
- 15405nf? NO. MARIANAS KYOI Saipan in EG/JP 0232, ad for top 20 albums, rock mx (Sheedy CA)
- 15410 RWANDA DW relay in EG \*1230-1245, IS, ID & xmtr site in EG/FR, nx, f (Trotto FL)
- 15430nf? SWEDEN RSI in SW \*1300-1305, IS, ID, nx?, p, QRM AFRTS (Trotto FL 10/4)
- 15430 SWITZERLAND SRI in EG 1530, world nx, underneath AFRTS, //17830 (Hill MA 9/24)
- 15450 LIBYA R. Jamahiriyah in EG 2100-2229, nx & other features, f (Nagel PA 8/20)
- 15450t SOUTH KOREA RK in EG 1850, nx, African svce, p, ID faint (Alcorn NJ)
- 15525 BANGLADESH RB in EG 1252, pop tunes, ID 1259, address, time, fqys, g (Daly NY)
- 15585 SWITZERLAND SRI in FR \*1315, ID in EG/FR, religious pgm to SE Asia (Alcorn NJ)
- 17565 GREECE VOG in EG 1543-1550, world nx, ID 1550, into GR, f (Trotto FL 9/30)
- 17570nf ECUADOR HCJB in EG 1450-1500, "Morning in the Mountains", ID, f (Trotto FL 10/7)
- 17595 MOROCCO RTM in AR 1650-1655, AR mx, ID, tlk, p (Trotto FL 9/21)
- 17605 CHINA CPBS 1 in CH/EG 0016, EG lessons w/BBC accents, p (Park HI 9/25)
- 17620 FRANCE RFI in EG 1625, rpts on New Caledonia, "Paris Calling Africa" (Alcorn NJ)
- 17675 BELGIUM RTBF in FR \*1630-1640, rapid drum IS, ID, FR mx, tlk, p (Trotto FL 9/21)
- 17705 NEW ZEALAND RNZ in EG 0049, business & agricultural nx (Feeley GA 9/12) also in EG 0120-0142, ezl mx, TC's, ID, tlk pgm, f/o 0142, f-p (D'Angelo PA 9/7)
- 17735 PHILIPPINES VOA relay in EG 0232, sports cmtry, QRM, p (Park HI 9/13)
- 17755 SURINAM via Radiobras in EG 1810, nx, upbeat mx, ID (Alcorn NJ 9/9)
- 17780 SOUTH AFRICA RSA in EG 1503-1515, nx, ID 1505, p (Trotto FL 10/7)
- 17795 AUSTRALIA RA in EG 0000, nx re protectionism, Mexico aid, US \$ (Dickson OH 9/24)
- 17795 CHINA R. Beijing in SP 0245, folk mx, tlks, //17650 (Park HI 9/27)
- 17815 MOROCCO RTVM in AR 1242-1315, AR mx, children's pgm, nx, //15335 (Dillon MD 9/28)
- 17830 SWITZERLAND SRI in EG 1530, world nx, p (Hill MA 9/24)
- 21660 ASCENSION IS. BBC relay in EG 1350, rock songs, Madonna etc., g (Daly NY 9/29)
- 21665 NETHERLANDS RN in EG 1835, nx, African service (Alcorn NJ 9/27)

\*\*\*\*\*  
 One item belonging to Log Section C arrived so late that it would have been impossible to forward it to the Log C editor. The item follows:

- 11640 CLANDESTINE V of Iran in AR 1919, mid-East mx, mentions of Iran, s/off at 1923 (O'Brien NY 10/5)

Last month I asked whether KFBS Saipan on 15135 (see Oct. 85) was a new outlet for that station. Today, I listened to most of the 2300-0000 mxn in VT and hrd their s/off ID in EG at 0000. Thanks to Dale Park in Honolulu for sending in this recent move.

Only 161 loggings were received this month for Log Section D thus explaining this rather brief report. However, there is still some good DX in the upper frequencies, so keep the reports coming. Thanks to those who contributed this month.

\*\*\*\*\*



Distributing Editor: John F. Hensault, 55 Lincoln St., Abington, MA 02351

FRENEX LOG REPORTERS -- NOVEMBER, 1985

DEADLINE---12th of MONTH

Sam ALCORN, Maplewood, NJ. (DX200/ICF6500W); Brian ALEXANDER, Mechanicsburg, PA.; Kirk ALLEN, Ponca City, OK. (NRD515); Kevin ATKINS, Pinson, AL. (R70/R390A/CR2021); Norman BOBB, Minneapolis, MN. (R1000); Arthur BONNET, W.Lafayette, IN. (DX400); Ralph S. BOWDEN, Mentone, CA. (FRG7700); Richard D'ANGELO, Wyomissing, PA. (R70); Tom DALY, Pomona, NY. (NRD515/CR2021); Richard DICKSON, Goshen, OH. (DX302/FRG8800); Peter DILLON, Columbia, MD. (DX400); Jim FEELEY, Norcross, GA. (R2000); Marlin FIELD Hillsdale, MI. (SPR-4); Tom GIELLA, League City, TX. (R1000); Kenneth HILL, Somerville, MA. (SONY 2010/DX400); Rufus JORDAN, Pittsburgh, PA. (DX302/Zenith Trans Ocea); Travis McLEMORE, Clearwater, FL. (FRG-7); Andrew O'BRIEN, Alden, NY. (R2000); Dale PARK, Honolulu, HI. (ICF6700W); Sheryl PASZKIEWICZ, Manitowoc, MI. (NRD515); Bill PLUM, Flemington, NJ. (FRG7700); John PRATH, Ft. Lauderdale, FL. (R71/FRG7/FRG7000); Roland SCHULZE, Stuttgart, W.Germany, (R4C/SPR4/R70); Bryan SHARPE, Castro Valley, CA. (DX302/DX400); Dan SHEEDY, Encinitas, CA. (R4B-UC1/R70); Adams SIMMS, Little Neck, NY.; Jerry STUART, Lawton, OK. (FRG7/SX190); Bob THUNBERG DuBois, PA. (R1000/CR2021); Ron TROTTO, St. Cloud, FL. (CR2021); Peter TUTAK, Jersey City, NJ. (R70/ICF7600D); Robert WILKNER, Ft. Lauderdale, FL.; Robert ZILMER, Rio Rancho, NM. (R1000)

Thirty Two Contributors this month my friends and at long last I am beginning to hear from those in the outlands, that the DX Season seems to be returning. That of course means COLDER weather for us unfortunate folks in the Ice Belt area's of the USA.

November finds us celebrating two important Holidays, so from your editor to all those Veteran's, no matter what Service or Battles, a very hearty Happy Veteran's Day, and for all of the Turkey Lovers out there, Turkey is the most traditional meat on Thanksgiving Day, (Blame it on the Settlers from England to Plymouth, MA) I hope that you all enjoy the meal of your choice on that very special day.

A reminder to all those NASWA Members who are looking for a new Rig or some new SWL gear to be under the Christmas Tree this year, the days are growing shorter and you had better start dropping stronger hints to you loved ones hihi. Yee Ole Editor just purchased his second R71A from Fred Osterman at Universal Shortwave in Reynoldsburg, OH, and I am pleased to say that it is running just great. Some of the contributors have asked what I use for RX gear here, well here is the list hihi, 2- Kenwood R2000's, 2- ICOM R71A's, 1- ICOM R70 and my good old Galaxy R530. WHY so much gear you ask, well it allows for coverage of both the SWBC Bands as well as the Utility Bands which I'm known to dabble in from time to time hihi.

That about does it from here for the month my friends, again my wishes for the Happy Holidays in November, and with the DX Season apparently returning, I'll be looking for an increased mail flow next month.

Best 673's

NO COLLECT CALLS ON THESE ADS, PLEASE

WANTED: Sony ICF-2002; Hammarlund HQ-180; MFJ-959, 1045, or similar battery operated tuner/preselector. Forester Isen, 2002 North Cleveland Street, Arlington, VA 22201. Phone (703) 528-2829.

FOR SALE: Cover albums to hold your valuable QSL cards. The albums hold 136 cards of sizes up to 4½ x 7½ inches in high quality picture clear completely inert non-glare pages in a richly padded vinyl binder. These albums are especially suitable for QSL cards from Radio RSA, Radio Japan, HCJB, etc. They are mint and still wrapped in plastic wrapper. Available in red, blue, green, black and brown at \$17.50 each or two for \$34.00 postage paid. Please state color when ordering and allow 2 to 3 weeks time for delivery. Personal checks must clear first. Franz Schwartz, Jr., 414 Sabra Drive, Wilmington, NC 28405.

FOR SALE: McKay DR-33C receiver with DA9, DA5, and DW1. Mint condition. Price \$750.00. Don Mazzucchi, 160 Cambridge Drive, East Hartford, CT 06118. Phone (203) 569-0202 from 9 am to 1 pm EST.

FOR SALE: DX-302 receiver, like new. Includes manual and Marconi antenna. Price \$125.00 or make offer. Must sell!. Richard Dickson, 3116 Park Road, Goshen, OH 45122. Phone (513) 625-8403.

FOR SALE: ICOM R-70, good condition, \$395.00. Panasonic RF-2200, mint, \$115.00. Martens loop, mint, \$90.00. McKay Dymek DR-22 with matching DA7 loop antenna, good condition, will negotiate. Joe Coleman, 157 Walton Place, Lansdowne, PA 19050. Phone (215) 626-3376.

FOR SALE: Back issues of FRENDX, August 1975 to December 1984; SPEEDX, February 1974 to December 1984. Price \$4.00 per year. You pay postage. H.C. Beal, P.O. Box 1246, Walla Walla, WA 99362. Phone (509) 529-0073.

FOR SALE: ICOM R-70, mint condition with box and manual, preamp and selectivity modifications per June 13, 1983 DX News. Original owner. Became expendable due to recent purchase of IC-745. Price \$400.00 including UPS. Bob Galerstein, 44 Center Drive, New Hyde Park, NY 11040. Phone (516) 248-6210 anytime before 9 p, EST.

FOR SALE: SPR-4 receiver with synthesizer and extra SW crystals, speaker and manuals. Very good condition. \$250.00 firm. If not interested in speaker, deduct \$20.00. Bob Flick, 444 Forest Green, St. Louis, MO 63119. Phone (314) 962-9998 between 6 and 9:30 pm Central Daylight Time or any reasonable hour on weekends.

FOR SALE: Sony ICF 20001, \$100.00. ICF 6700W, \$200.00. Prices include shipping. Customized Beam Headings (from/to) and distances (Mi/Km) to over 355 WRTH transmitter sites. Useful in picking alternate transmissions and selecting listening times based on distances. ITU Country Codes included. Send your location or coordinates, \$6.00. Gilfer's Confidential Frequency List, 5th edition, and Guide to RTTY Frequencies, 2nd edition, \$6.00 each. FRENDX, complete 1984. \$5.00. Cashiers check or money order, please. Al Drehmann, Route 2, Box 3B, Tryon, NC 28782. Phone (704) 894-3398.

FOR SALE: Drake SPR-4, clean and in working condition. Could use some work or modification. Make me an offer. Alfred Lisanti, 8201 4 Avenue, Brooklyn, NY 11209. Phone (718) 680-8164.

MIKE ADAMS  
ABLE T.V. & ELECTRONICS  
6333 HIGHWAY 2321  
PANAMA CITY, FL 32404  
(904) 785-7824

I. FOR SALE OR TRADE ITEMS:

1. Capacitor Analyst, B & K Model 801, Tests Shorts, Opens, Leakage and Value. With Manual and Leads. Good Condition. - \$40.00
2. Commercial Cable System AM/FM Receiver, Cablenet Model 4033A, has 75 Input, Works Great. - \$7.50
3. VHF CATV Amplifier, Blonder Tongue Model CVB-45A, Will Power a Large TV Distribution System, Up To 45 DB of Gain. Has Slope Controls and Separate or Combined Inputs. Like New. - \$40.00
4. Capacitor/Inductor Analyzer, SEMCOR Model RC115; Tests Value, Leakage, Power Factor, Impedance Ratio, Insulation Resistance, Etc. Good Condition, With Leads. - \$45.00
5. Lifeboat Emergency Transceiver, Model RS-103. New and Unused, Transmits and Receives AM/CW on 500 KHZ, 8364 KHZ and 2182 KHZ. Case Lid Seals Water Out; Type Class 1 and Floats. Complete With All Tools, Key, Antenna, Accessories and Instructions. Trade for Bearcat Full Coverage Crystalless Scanner or Make Offer.
6. Still Available! Heath HX1681 Transmitter, NEW, Assembled From Kit Which Had Been in Storage. All Solid-State Except Driver and Finals, Operates Break-In CW, Etc.; Covers 80 To 10 Meters, VFO, Sidetone Output, Linear AMP Control. Comes With PS-23 Power Supply, New; and Manual. Works F.B.! (Costs 270.00 +, New). - \$160.00
7. Hybrid Telephone Patch, Model HD-15. Meters Output and Null In VU's, Matches Phone Lines To Transmitting and Receiving Equipment. Like New. - \$30.00
8. NEW, Display Unit, AM/FM/Multi-Plex Receiver/Amplifier. Rotel Model RX-400, 50 Watts, Slide Rule Dial, Counter-Weighted Tuning (Smooth!), Inputs for Phones, Tape, Turntable, Aux, Etc. Has

Separate Bass and Treble Controls, Tape Monitor, Loudness, Etc. Internal or Ext. AM/FM Antennas. Comes With Two 12" Bookshelf Speakers. Trade for Ten-Tec QSK Xceiver or Digital Gen Coverage Receiver.

9. IC Multimeter, Energy Concepts Model 19600, 10 Meg OHM Input on All Ranges, Measures +DCV, -DCV, ACV, OHMS and Amperage, Maximums of 10 MEGOHMS, 1000 Volts and 5 AMPS. Has 4 1/2" Jeweled Mirrored Scale Movement and Wrap-Around Full Metal Case. Weight 4 lbs. With Manual. Works Beautifully and Is Portable. - \$20.00
10. AM/SSB CB Transceiver, Sears Model 934.36771, Transmits and Receives AM, LSB and USB on 23 Channels At 12 Watts P.E.P. Output. Features Fine Tuning, Noise Blanker, P.A., SWR/RF/S Meter, Operates AC Fixed Station or 12 V Mobile. Comes With Radio Shack Desk Power Microphone. Weighs 9 lbs. - \$65.00
11. HF Transceiver, Heathkit SB102, 80 To 10 Meter, 130 Watt CW/SSB With CW and SSB Filters, PS-23 Power Supply and SB-600 Communications Speaker. Operates LSB/USB Push To Talk or VOX, CW, Semi-Breakin and Has Aux. XTal Position. Trade for Crystaless Scanner or Ten-Tec QRP Transceiver. Offer?
12. Heavy Duty Tower, Rohn 25G; 45' - 3 Full Middles, 1 Top, 1 Short Base; Hot-Dip Galvanized. On The Ground and Ready To Go. Pick-Up Only. - \$165.00
13. Active All-Wave Receiving Antenna, McKay DyMek Model DA-100. Comes With Manual, Antenna/Pre-Amp and Control Box. Covers LF To HF (50 KHZ To 30 MHZ), Variable Gain and Impedance Matching, Omni-Directional. Works Great and Is In Mini-Box Enclosure (Control Box). - \$50.00
14. Antenna Pre-Selector, Mizuho SX-3, Covers 3 to 30 MHZ and works With Receiver or Transceiver. Has 15 DB Plus Gain on All Frequencies With Variable Gain Control and 10 DB Attenuator. Has Hi and Low Impedance Matching, Remote Control Feature With Manual. - \$65.00
15. Portable Sound Center, General Electric 3 Way Power, AM/FM - Stereo/8 Track Player; Two Speakers (Detachable) Phono Inputs, Operates From 120 V AC, Internal Batteries or External D.C. Source. A High Power, Compact And Versatile Unit. Nice! - \$20.00

## II. WANT EQUIPMENT

1. Digital Scanning Receiver, Covering AM/FM/SW/LW Bands With BFO. (eg, Uniden CR 2021, Etc.)
2. Code/Rtty Reader (eg, AEA Products)
3. Crystaless Scanner, Full Coverage Including Aircraft Band. (eg, Bearcat 300, 350)
4. Accessories For Yaesu Ft 208R, 2 Meter, Handi-Talkee:
  - A. NC 8 Power Supply
  - B. LCC 8 Leather Carrying Case
5. Antenna Tuner, 100 To 200 Watts, 2.0 To 30 MHZ, Balanced and Unbalanced Outputs, Wide Range, Etc.

## III. WANT PARTS:

1. For Panasonic RF-2800, AM/FM/SW Portable Receiver.
  - A. Bandswitch
2. Meter Movement For NRI TV M Model 212. Movement Part # Is ME-23.
3. Metal Cabinet Or Enclosure In Which To House An Antenna Tuner (Home Brew Project Now Underway). Minimum Size 8" D x 12" W x 7" H. Write With Description.
4. The Following Miscellaneous Parts and Components Are Needed For Various Projects:
  - A. (2) Small Metal Enclosures, 3 1/4" x 2" x 4", Vented With Feet If Possible.
  - B. (2) Heat sink, Flat On One Side, eg., Radio Shack Model RS276-1363.
  - C. (6) Diode, 1N914
  - D. (8) Capacitor, Silver Mica, 470 PF, 50 V  
(4) Capacitor, Silver Mica, 560 PF, 50 V  
(4) Capacitor, Silver Mica, 220 PF, 50 V
  - E. (6) Capacitor, Disc, RF HI Q, 1 MFD, 50 V
  - F. (6) Capacitor, Disc, RF HI Q, 39 PF, 50 V
  - G. (1) Resistor, 100 K, Carbon, 2 W
  - H. (2) Transistor, RF Pwr, MRF 455A

## IV. WANT SERVICE INFO:

1. Panasonic Model RF-2800 Portable AM/FM/SW Receiver

(AM Dead and Needs Bandswitch).

2. Panasonic Color T.V. Model CT5377R, 25" Console, Chassis Type GXLH.
3. Radio Shack Model TRC424, CB Transceiver.
4. Lafayette Model RK825, Reel To Reel Recorder.
5. R. L. Drake, Model R4B, Ham Receiver.
6. Bradford Model 505 Ranger, 5" B/W T.V.
7. EICO CRT Tester/Rejuvenator, Model 633
8. Sencor Capacitor Analyzer, Model RC115 (FAA)
9. Akai, X100 D, Stereo Reel To Reel Deck.
10. Marantz Model 6270 Q, Quartz Lock, Direct Drive, Auto Shut-Off Turntable.

FOR DETAILS CONTACT:

Able T.V. & Electronics  
6333 Highway 2321  
Panama City, FL 32404  
(904) 785-7824

\*\* No Collect Calls! And Send S.A.S.E. Please.

## NEWS RELEASE

GILFER ASSOCIATES, INC.

52 Park Avenue, P. O. Box 239, Park Ridge, N. J. 07656 (Area Code 201 391-7887)

**RADIO RECEIVER = CHANCE OR CHOICE:** a 256-page book giving reviews through real-life tests to over 75 different receivers is now available from GILFER at \$18.50 per copy.

Bigger savings may be realized when the WRH is purchased along with the new book on receiver reviews **RADIO RECEIVER = CHANCE OR CHOICE**. The two books, regularly \$38.45, only \$32.00 when purchased together. A SAVING OF \$6.45 over the regular price.

HAP THANKS: Thank you for donations to the following individuals: Gordy Thomas, Harold Cones, Frank Aden Jr., Terry Colgan, John Kapinos, Tom Haskett, Mike Cunningham, Donald McCants, Bob Lord, Shawn Axelrod, Bob Fraser, Tom Mooningham, Bill Clark, C. Vernon Hysen, J. Dillaman and C. Foxx.

HAP BID ITEMS: #305: WRTH 1982 in mint condition! #306: WRTH 1985 in mint condition! #307: WRCK T-Shirt (M) blue, white. #308: WFLJ T-Shirt (M) white, gray. #309: CHOW T-Shirt (M) yellow, white, blue. #310: WPLJ T-Shirt (M) B&W. #311: BBC Radio 1 match book, red, white, blue. #312: CKPT/CKQM clip-on ID, brown, yellow, orange. #313: 6WF (Australia) cloth shoulder patch (2x3") blue, white, orange. #314: Radio West (UK) station pen, red, white, blue. #315: EDXC bulletins-1984, 10 different. #316: VHF-UHF Digest bulletins-1974 complete. #317: VHF-UHF Digest bulletins-1975 complete. #318: IRCA bulletins-1984 complete. #319: NASWA bulletins-1977 complete. #320: NASWA bulletins-1979 complete. #321: WDXC bulletins-1984 complete. #322: NASWA bulletins-1978 complete. #323: ASWLC bulletins-1982 complete. #324: ASWLC bulletins-1981 complete. #325: ASWLC bulletins-1979 complete. #326: SPEEDX bulletins-1980 complete. #327: SPEEDX bulletins-1983 complete. #328: NNRC bulletins-1973 complete. #329: NNRC bulletins-1974 complete. #330: RIB bulletins-1984 complete. #331: L'ONDE bulletins-1980 complete. #332: VHF-UHF Digest bulletins-1984 complete. #333: L'ONDE bulletins-1979 complete. #334: NNRC bulletins-1979, 7 different. #335: DSWCI bulletins-1978, 10 different. #336: CKLA station razor, white, orange. #337: Radio Praha (Czech) lapel pin, red, silver. #338: Radio Korea cloth "Marchers" pennant (5x9") m/c. #339: CHIN sticker (3x5.5") m/c. #340: KFIZ "Brewers" sticker (3x11.5") yellow, blue, white. #341: WVLL "Saints" sticker (3x9") yellow, B&W. #342: KHTR sticker (3x11.5") red, white, yellow. #343: KWNU sticker (3x11") green, white. #344: KTAR "Arizona State Univ." sticker (3x11") red, white, yellow. #345: KDKA sticker (3x11") m/c. #346: KWAC sticker in Spanish (3x12") red, yellow. #347: KTGR sticker (4x8") m/c. #348: WAAK plastic ID card (2x3.5") red, white, blue. #349: CHIN sticker (3.5" cir) red, B&W. #350: Sudfunk 4 (FRG) sticker (3.5" cir) green, B&W. #351: CJXX sticker (5" cir) yellow, black. #352: Radio 7 (France) sticker (3x6") m/c. #353: 72R (Australia) sticker (2x10") m/c. #354: VOA sticker (3" cir) red, white, blue. #355: Radio Polonia station pin, silver, red, white. #356: WPLR key chain, red, white. #357: WJGS key chain, blue, white. #358: BBC-WS metal badge (2" cir) red, white, blue. #359: KOME metal badge (1.5x1.5") yellow, black. #360: 4GG (Australia) metal badge (2" cir) red, white. #361: CKXL golf tee, red, yellow. #362: KVLR golf tee, green, white. #363: GKKW match book, white, red, blue. #364: BBC metal key chain, silver-nice. #365: Spectrum World Broadcasting paper pennant (3.5x7.5") yellow, black. #366: 42A (NZ) sticker (4x5") m/c. #367: CHOW sticker (4x8.5") m/c. #368: CKUA metal badge (3.5" cir) pink, purple. #369: CKFM "Daynard" metal badge (3" cir) yellow, B&W. #370: GKKW metal badge (2x3") red, white. #371: CKFM metal badge (1.5x3") blue, white. #372: CKUA metal badge (2" cir) red, B&W. #373: CKUA metal badge (1.5" cir) orange, B&W. #374: Radio Forth (Scotland) metal badge (1.5" cir) orange, B&W. #375: NNIN metal badge (2" cir) silver, black. #376: WLUP metal badge (2.5" cir) B&W. #377: WBIS metal badge (1.5" cir) red, white, blue. #378: WHRG metal badge (1" cir) green, white. #379: KATT metal badge (1" cir) m/c. #380: WLLZ "AC/DC" metal badge (1" cir) B&W. #381: KRYT metal badge (1.5" cir) red, white, blue. #382: Radio Bucharest key chain, m/c. #383: Radio Bucharest station pin, (1" cir) m/c. #384: RBI station pin, silver, black. #385: 42A (NZ) key chain, blue, white. #386: CKLG 12" ruler, red, white. #387: CKFM station pen, silver, blue. #388: KQDS cloth shoulder patch (2x4") orange, black. #389: KUME cloth shoulder patch (2x2") black, yellow. #390: WJJS razor, yellow, black. #391: WKDW razor, yellow, black. #392: WLNA razor, B&W. #393: German Beer Coasters, 3 different, m/c. #394: ZNT (Australia) sticker (5x5") m/c. #395: DLE (FRG) sticker (4x6") m/c. #396: CKKW "25th Anniversary" sticker (2.5" cir) blue, gold. #397: Radio Nacional de Venezuela decal (3" cir) blue, white, red. #398: Radio Bremen (FRG) sticker (3x3.5") blue, white. #399: RPI bag tag, blue, white. #400: ABC-TV (Australia) sticker (2x5") m/c. #401: ABC-TV "Hunter" pennant-sticker (4x6.5") orange, brown. #402: IBRA Radio paper pennant (4x7") m/c.

ADDRESS: Please send your bids and orders for direct sale items to: Sam Barto, 47 Prospect Place, Bristol, CT. 06010.

DIRECT SALE ITEMS: The following stickers are available for \$.25 each or any 5 for \$1.00. New since last issue: WKMF (large) (small), WFPC, Z-100, KWRE, WDRQ, WLLZ, WDSB, WEW, WKRI, WIBV, WUNN, WCRZ (large) (small), KCFM, WFOG, KENR, WGNU, WBRU, KWK, KSIV, WCAU, WESL, CHEX, Radio Hallam (large) (small), KRBC, CKPG, Signal and CKEC. We also have CFRN, CKUA, KATT, Deutsche Welle, KNU1, Q-93, 97 rock, KZEU, Mercia Sound, Radio Luna, South Coast Radio, ERF-TV, CFGO, CFOR, CKLC, KACC, CFRY, CJBK, CJET, KRBE, CKUE, CKPR, CJRT, CJCL, CJSB, FM-108, CKQM, CKTA, CKWS, CKPT, CKKW, CHEC, CKCO-TV, WPCE, WOWI (large) (small) (music), CFOS, CIRK (large) (small), KHCB, CFCN, CBC, CKRY, 6WF, WIIZ, WXQR (large) (small), 2Z, KSEI, KKYX, WYXX and KNPA.

SPECIAL OFFER: For a limited time only - to stuff your reception reports we are now offering a total number of 50 stickers/decals for only \$5.00!!! These will be of my choosing - you may receive a few duplicates... Sam

# NORTH AMERICAN SHORTWAVE ASSOCIATION

45 Wildflower Road  
Levittown, Pennsylvania 19057

FIRST-CLASS MAIL  
U.S. POSTAGE  
PAID  
Levittown, Pa.  
Permit No. 319

## FIRST CLASS MAIL

**NASWA** "UNITY AND FRIENDSHIP"

### PUBLISHES FRENEX MONTHLY

#### NASWA MEMBERSHIP FEES:

First Class North America..... \$16  
Overseas, Surface Mail..... \$16  
Airmail to Central America, Caribbean, South America, Europe..... \$25  
Airmail to Asia, Africa, Pacific..... \$28

All remittances must be in U.S. funds and mailed to NASWA,  
45 Wildflower Road, Levittown, PA. 19057  
Update: Besides FRENEX, NASWA also publishes UPDATE, a mid month  
newsletter with the very latest DX news while it's still news. (UPDATE also  
appears in each issue of FRENEX) It is only available to NASWA members

"UPDATE" SUBSCRIPTION RATES PER YEAR:  
North America (First Class)..... \$4.00  
Overseas (Airmail)..... \$6.00  
Sample copies of FRENEX and UPDATE are available for \$1.00 in N.A.  
Overseas..... \$2.00

EXECUTIVE DIRECTOR & PUBLISHER: Bill Oliver, 45 Wildflower Road,  
Levittown, PA 19057

#### SHORTWAVE CENTER - NASWA HEADQUARTERS

LISTENERS' NOTEBOOK - Glenn Hauger, Box 490756, Ft. Lauderdale, FL 33349

OSL REPORT - Sam Barto, 47 Prospect Place, Bristol, CT 06010

UPDATE EDITOR: Tom Alleman 636 E. 74th Terrace, Kansas City, MO. 64131

DISTRIBUTING EDITOR - John F. Henault, 55 Lincoln St., Abington, MA 02351

LOG REPORT (A) - Mike Harris, P.O. Box 264, Grove City, OH 43123

LOG REPORT (B) - Jerry Berg, 38 Eastern Avenue, Lexington, MA 02173

LOG REPORT (C) - Peter Drizhal, P.O. Box 663, Oxon Hill, MD 20745

LOG REPORT (D) - Wallace C. Treibel, 357 N.E. 149 St., Seattle, WA 98155

SCOREBOARD - Jerry Lineback, 115 Wroxton, Conroe, TX 77304

AWARDS CHAIRMAN - John M. Kapinos, 86 S. Quinsigamond Ave. Shrewsbury, MA 01545.

COUNTRY LIST CHAIRMAN - Don Jensen, 5204 70th St., Kenosha, WI 53140

U.K. REPRESENTATIVE - Alan Thompson, 15 Ena Ave., Neath, W. Glamorgan,  
Great Britain, SA 113AD

