

F R E N D X

North American Short Wave Association

SWBC NEWS 5-75

WITH THIS ISSUE OF FRENDX, publication from S.Charleston ceases. Alan Mayer will handle publication of both FRENDX and FLASHSHEET. Mac Leonhardt will serve as the new Executive Editor....I am sure FRENDX will continue to improve, providing, as always, the best coverage of the SWBC scene available. Be sure to continue to support the section editors, and be willing to help out in other projects, and NASWA will continue to grow.

I take this opportunity to thank the editors who have served over the past years, and will continue to serve as editors, and as reporters to the sections. Many thanks also to the numerous members who have written recently wishing me well in my "retirement". I'm looking forward to being able to do some DXing again, and not having to worry about handling HDQ mail, get samples sent, letters answered, get bulletins printed & collated and mailed, etc. After literally hundreds of hours of that I expect to confine my radio activities to some DXing and an occasional article for SWC.....Dan Ferguson

We extend our sympathies to SWC Editor Charlie Wootten, who recently lost his daughter.

ANARC CONVENTION The 1975 ANARC Convention will be in Montreal, Quebec, Canada. Please see the inside front and back covers for the details. Don't miss this year's meeting!

ANARC CONVENTION - 75

PLACE - Maison du Radio Canada (Headquarters of R.C.I.), Montreal, Quebec, Canada

DATE - Friday, August 22 to Sunday, August 24, 1975

ACCOMMODATIONS - The Windsor Hotel, 1170 Peel Street, Montreal, Quebec

ROOM RATES - (all prices shown are in Canadian Funds and include tax)

Single \$21.60 per night
Twin \$28.62 per night; if shared with another person
\$14.31 per night
Triple \$37.26 per night; if shared with two other persons
\$12.42 per night

HOTEL RESERVATION DEADLINE - Wednesday, July 2nd, 1975.

After that, the convention committee will not be responsible for reservations. Prior to that date, the committee will handle hotel reservations (with one night's deposit).

WARNING----- Montreal is a favorite summer vacation spot, and at the time of the convention, rooms will be at a premium. The committee has only a certain number of pre-booked rooms at the Windsor. These rooms will be reserved on a first-come first-serve basis. Thus if you wait too long to reserve a room, the Windsor may not be able to accommodate you, and rooms at another hotel, if any are available, may cost an additional \$5.00 per night.

CONVENTION REGISTRATION FEE - \$10.00 U.S. or Can., includes one-day pass to Man and his world, formerly EXPO 67) payable in advance. Without one-day pass to M. & H.W.: \$7.50

BANQUET - To be held at the Windsor Hotel. The cost will \$11.00^{cons} including tax and tip. Payable in advance. The Banquet speaker will be Basil "Fip" Duke, former R.C.S.W.C. president.

TENTATIVE CONVENTION SCHEDULE -

- Fri., Aug. 22: Registration; time to visit M. & H.W.; Radio Canada International Night featuring a tour of Maison du Radio Canada, a reception given by the programming department and/or meeting the behind the microphone personalities, a talk given by Ian McFarland, producer of R.C.S.W.C., on "Listeners' Misconceptions of International SW Stations", followed by an informal discussion.
- Sat., Aug. 23: Talk on H.I.C.C. and auction for H.I.C.C., talks on SW, BCB, and UTE DXing, Dr. David D. Meisel on "Propagation", Perry Ferrell of Gilfer Associates on the future outlook of receivers, informal meetings, use of the monitoring post, and banquet.
- Sun., Aug. 24: ANARC DAY featuring ANARC reports, and informal discussions.

"CLANDESTINE CRANNY"

With the cooperation of one of my new contacts, Mr. C. Krets, we're going to find out what the current clandestine broadcasting scene really looks like. Mr. Krets operates a very powerful receiving station on a secluded estate located near Ft. Meade, Maryland. It is complete with an electrified, double chain-link fence, guard dogs and a moat (the contents of which I did not choose to inquire about).

Who knows what stations lurk in the Clandestine Cranny? C. Krets knows and he has given me permission to pass a few of what he calls "the more common ones" on to you.

First, Radio RUB. Radio of the Movement for Union of the Banana Republics. This station was first noted in August of 1973 and continues to broadcast periodically on 6821 MHz. Broadcasts of seven minutes in length usually come on the air at 23 minutes past the hour, every fourth hour, counting from 0100 on even-numbered dates, from 0200 on odd-numbered dates. The station signs on and off with a 3 minute version of "Yes we have no.." or "You should never put.." The location of this operation is uncertain but believed to use an old transmitter of La Voz del Baru.

Radio SIC. Operated for the past four years by the Society for an Independent Cabinda on 5.036MHz. This, according to Mr. Krets, is an obvious attempt to pull listenership from the authorized Cabinda outlet. The schedule is exactly the same as Radio Clube de Cabinda. Signs on and off with a distinctive gong and the words "Aqui Cabinda Liberdade." Although authorities in Cabinda are aware of this station they claim no information as to its location or about SIC itself. Krets suspects the station may be financed by a select group of short wave listeners in their own self-interest.

Radio ORIS is a relatively new station currently being noted from 1400-1445 on 11772. Operated by the Organization for Rejuvenation of Italian Somaliland over Radio Nacional de Venezuela.

On the domestic scene, a periodic pirate is noted on the 14MHz amateur phone band around 2300 or 0000 GMT. Identifying as "Radio Cher" and playing old Anson Weeks records. Not much is known about this operation but "CHER" is thought to stand for "Cherry Hill Emancipated Radio."

Radio of the People's Liberation Front for Independence and Self-Determination of the Greater Red Sea Islands Unification and Underground Freedom Movement. The information on this one comes from an African monitoring post and has not yet been noted here in the U.S. Frequency is 3182 MHz and the station operates from an old gambling ship located on the waters of Lake Victoria. Schedule is 1800-0000 GMT daily, opening and closing with the movement's stirring theme "Red Islands In the Sun" played on conga and triangle.

Finally, there are plans afoot to open a station with a totally new approach to clandestine broadcasting. A private, non-aligned consistorium is reported about to inaugurate a 500kw station on some Caribbean island owned by one of the group's members. A purely commercial venture along the lines of Radio Trans Europe, the station (to be known as Radio Trans Philly) intends to sell time to any liberation movement or what-have-you, and will carry no programs of its own. Details on this operation are actively sought by Mr. Krets as he believes, if the venture proves successful, it could very easily spell the end of free, independent clandestine radio!

I am much indebted to Mr. Krets for releasing the information about these heretofore unknown clandestine broadcasters and allowing me to print them here.

As he said, drawing his cloak around him and shaking my hand as I was about to leave for home: "There are more things in my moat and in the air than are dreamt of by mere hobbyists."

SHORTWAVE CENTER
SHORTWAVE CENTER

Charles A. Wooten
4911 Battery Lane, Apt. 1
Bethesda, Maryland, 20014

IN NETHERLANDS ANTILLES, RADIO IS SCRIPTURAL

by Paula A. Gardner: VARIETY, 18 September 1974

forwarded by Glenn Hauser

Bonaire, Netherlands Antilles.

Long ago a haven for pirates, Bonaire now holds the western world's most powerful radio transmitter (500 kw). It's owned and operated by Trans World Radio, whose missionary station beams through it and two shortwavers, 260 kw and 50 kw, respectively, to North Central and South America, Europe or both sides of the Iron Curtain, and the Middle East.

Not only does non-profit TWR beam religious broadcasts into the Soviet Union, in Russian and Armenian, but it actually tapes programs in Polish government studios with the aid of government technicians. That coup was achieved in 1965 by Stanislaw Krakiewicz, prez of United Evangelical Church of Poland, who persuaded the authorities to cooperate on the ground that TWR broadcasts are non-political, adhering strictly to a policy of airing only Bible teaching.

TWR does not attack Communism nor, for that matter, the Roman Catholic Church, although it is "evangelical fundamentalist", according to several of its personnel with whom this reporter talked while visiting sunny 8,000-pop. Bonaire. In fact, said Duane Skipper, chief of English mail, many letters are received from priests and nun requesting literature and Bibles. One missionary added that recently "a high Roman Catholic official" came to look at the station and get some Bibles and other material.

JAMMING IN EARLY DAYS

Any jamming by unfriendlies? Variety asked production manager Dan Harvey, ex-commercial radio and TV (ABC). "Only in the very early days," he said, "when we hadn't the staff to monitor adequately. That was when our station was in Tangier; it operated until 1959, when Morocco nationalized radio and our Indiana-born president Dr. Paul E. Freed, now at our Chatham, N.J. headquarters--moved it to Monte Carlo. Its transmitter building was originally put up by Hitler as headquarters for a Nazi radio network that never materialized. A third station is being built in Swaziland, which will cover all Africa south of the equator. The Monte Carlo station, 200kw, covers North Africa and Europe, as well as the Middle East.

"In '56 we learned that two programs we carried, in Czech and Estonian, were being jammed. Turned out they contained political comment we didn't know about. The comment was edited out and the jamming ceased. However, Moslems don't like our broadcasting the Christian message to their lands. We learned from our Beirut studio recently that there are stiff penalties in some Arab countries for those caught requesting or receiving Christian literature. We still get a lot of requests for it though." TWR also has studios in Spain, France, Holland, Brazil and Canada.

POL PROPAGANDA OUT

Paul Freed once made a trip to the USSR and talked with authorities, although there'd been no jamming there. Their attitude, says Harvey, was "Why waste time and money jamming Trans World Radio? We stamped out religion long ago." U.S. authorities look at it differently, though, and TWR gets good cooperation from Voice of America.

Not only is political propaganda banned from TWR, but doctrinal heresy too. Asked if Oral Roberts was one of the 37 religious outfits carried by TWR aside from its own broadcasts, Harvey said Roberts had never applied (nor has Herbert Armstrong of "The World Tomorrow") but that, if his program were broadcast, "probably more of the content would have to be cut out than would go on the air. Our policy is: a very positive scriptural message. If there's any argument about the Scriptures we'll take it out."

Even Billy Graham gets the chop at times, says Harvey. TWR carries his "Hour of Decision" from Minneapolis, but "around July 4, for instance, his message may be geared to hitting, on a spiritual level, the social and moral ills of the American people. We have an international audience which might misconstrue some things because of their particular culture, so if he gets too strongly Americanistic we take it out. I understand Dr. Graham approves. (Harvey, interjected Duane Skipper, knows Graham personally and has been to his home.) We're thoroughly behind Billy Graham. He's so thoroughly evangelical."

EAGLE EYE EDITING

Everything is rigorously monitored before it goes on the air, said Harvey, "not only for quality, as befits a super power station, but for content. We're guests of the government here. Also, we're getting into fields where others would like to broadcast, so we're careful not to give them a chance to object. We never have any complaints about content and rarely about quality. Sometimes we have to update a tape; some U.S.-made broadcasts come by ship. We're careful not to editorialize on newscasts; we read everything off the Associated Press wire. We have a few deejay programs—discs plus comments like "Music and You", but we don't play music whose rhythm overshadows the words".

(Despite that "rigorous monitoring", this reporter caught an unscriptural pontification on the one full TWR broadcast heard, in the home of two of the missionaries. It was an hour long discourse by rich-voiced Dr. Joel Nederhood on a Dutch Reformed Church program. During a moderately subtle attack on the wisdom of clergymen in supporting civil rights demonstrations lest they be taken to represent their church and the advisability of any church members doing the same, Nederhood stated flatly, "Righteous indignation has no place in Christianity."

"Christ thought it had," the reporter interrupted. "Remember how he scourged the money changers out of the temple?" There was a pause, then the host said, "Well, anyone can make a mistake.")

From Harvey, Skipper and the missionaries all three met are engineers, their wives secretaries and from visits to both the handsome studio-office complex and the transmitters, about four miles away, some facts were learned.

Main studio is about 25x50, with two smaller ones and three announcer booths. Visible and audible from the control room above the big one was a male-female quartet singing very well in Portuguese. It consisted of two Brazil-born Americans and two others who knew no Portuguese and had to learn the lyric sounds by rote. Everything is taped, even newscasts a few minutes ahead, because of hard-to-pronounce names.

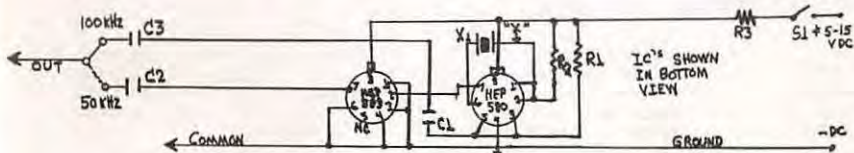
The "antenna farm" comprises 29 steel towers; tallest is 760 feet. Three languages can be put on the air simultaneously. TWR does simulcast satellite-telephone broadcasts originating Stateside and relayed to Bonaire. A big Boston church held a mission conference that was satellite-broadcast by TWR.

Bonaire medium-wave service is full-day in English, part-day in Dutch, French, Norwegian, Portuguese and Spanish. Shortwave service consists of North American and international latter in Arabic, Armenian, Czech, Russian, Serbo-Croatian and Spanish. Its broadcasts to Europe and Mideast complement those from Monte Carlo because of the differences in time.

A CRYSTAL CALIBRATOR FOR THE SHORTWAVE LISTENER

by Stan Rogacki, WA2EXX

Here is a cheap, easy-to-make frequency marker that is ideal for frequency charts and calibration. Using state of the art components, it provides square wave markers every 100 and 50 kHz throughout the BC and SW spectrum. It will take any DC voltage between 5 and 15 VDC. The two IC's are the HEP 583 and 580. They will cost about \$1.25 each. R1 and R2 are 100K ohm $\frac{1}{2}$ watt; R3 is 1K ohm $\frac{1}{2}$ watt. C2 and C3 are .1 uF disc, and C1 is a .001uF disc. S1 is a SPST switch, and S2 is a SPDT. It is suggested to use HEP 454 IC sockets so that you don't burn up the IC's when you do solder them in. Also, the sockets will allow you to remove the IC's for servicing or another project. These parts are available from mail order houses, Lafayette, or your friendly TV serviceman who peddles Motorola equipment. The finicky people can add a trimmer capacitor at the point I marked "X", so they can zero beat WWV exactly. The cheapest place to buy the 100 kHz crystal is from Jan Crystals, 2400 Crystal Drive, Fort Myers, Fla., 33901. They go for \$4.50, and be sure to add 20¢ for first class postage, or 25¢ for air mail (suggested). The circuit can be mounted on a small piece of perfboard, and mounted either inside the receiver or in a small separate enclosure. To begin operation, wrap a piece of wire (which is connected to the 'out' part of the calibrator) to or around the antenna terminal, apply power and select 100- or 50 kHz. Good luck and good DX! (circuit courtesy Motorola)



Found in Indonesia

RADIO PERMERINTAH DAERAH KABUPATEN SIMALUNGUN

compiled and arranged by Australia's Ace
Dæer: Craig Tyson

This Indonesian station has been widely heard both in Australia and overseas. Construction on the station commenced on the 7th August 1970 and was completed on the 10th December in the same year, at a total cost of 1,5 million Rupiah. The 1970/71 budget provided the source of finance to establish the station. First transmissions began on the 17th December 1970 and were primarily intended for reception in North Sumatra.

The station is regarded as a source of up to the minute news and information and is also a medium of entertainment for the community as well as that in North Sumatra. The Simalungun district is located in the centre of the North Sumatra Province. Surrounding districts include Asahan and South Tapanuli to the East, North Tapanuli and Dairi to the South, Karo and Langkat district to the West and to the North Deli Serdang district. The district of Simalungun is noted as a tourist region with the towns of Parapat and Haranggaol adjoining Danau Toba with its beautiful panoramas. These towns possess natural beauty and receive a number of foreign tourists throughout the year. The station is in the municipality of Pematang Siantar where the Simalungun museum is located - featuring ancient relics. A traditional royal palace is featured at Pematang Purba where the village of Batak Simalungun is located. The municipality of Pematang Siantar is situated at a distance of 128 km from Medan via Brastagi-Kabanjahe and is the major town in the Simalungun district.

RPDK Simalungun has 3 transmitters at its disposal, 2 in alternation each day and one as a standby. The first and second transmitters operate on 64.65 meters (4630 kHz) and the third on 87.47 meters (3510 kHz). The station has a staff of 21 and operates according to the following schedule: 2325 - 0200 on 64.65 meters; 0230 - 0420 on 87.47 m; 0430-0745 on 64.65m; 0800 - 0920 on 87.47; and 0925 - 1600 on 64.65m (but monitored on 87.47m also during this time). Advertisements are often heard over the station and in general the ads must be paid for in advance. The texts for the ads are arranged by the commercial section or else by the businesses themselves. After the text has been approved by the business it is taken care of by RPDK Simalungun. The cost for one second of an ad broadcast is RP8. If it is broadcast 30 times a month the cost would be RP7200. Each ad must last at least 20 seconds and be broadcast at least 15 times a month. RPDK Simalungun broadcasts ads daily at the following times: 2340-0200, 0430-0745, 0925-1130, and 1215-1400. Between 2340 and 0200 businesses can advertise from one up to 6 times and the same applies to the other broadcasting periods of daytime, afternoon and evening. This matter depends on the response from businesses. Ads are broadcast during entertaining music periods mixed in with request songs and local music.

During each period announcements can be broadcast which resemble ads and payment is the same as for ads; that is, RP8 per second for each broadcast. Included as ads are announcements from Government institutions, public announcements, radio messages and other items which are not included in family news. The family news includes the following: Obituary notices (Berita Meninggal dunia); News of severe illness (Berita Sakit Keras); Birth Announcements (Berita Anak Lahir); Missing persons announcements (Berita melarikan diri (Berita Panggilan)); and items concerning lost children (Berita Anak (Orang Tua) yang hilang). Every family news item can be directed at the most to ten people at ten addresses. Payment for each family news item for one broadcast is RP100. Each family news item is read twice by the announcer so that it is clearer for those concerned. Announcements and family news can be broadcast in any other time periods.

The station broadcasts songs for listeners. These are broadcast daily from 1305-1500. Request song cards can be bought at the office of RPDK Simalungun at Jalan Merdeka Nr. 1, Pematang Siantar at a price of RP 25 per card.

Included in the spoken broadcast programme are: sermons from the Christian, Moslem and Catholic religions, radio drama, literature, travel notes, children's corner, etc. Every Sunday there is a broadcast relayed from a church from 0200-0400. Every Friday there is a broadcast relayed from a mosque from 0515-0600.

'Tourist Talk' TRAVELING WITH A RADIO: REVISITED

with Donald King

On a trip to Jamaica last summer I found that my Barlow Wadley was practically my only means of keeping within touch with the rest of the world. Although the local stations provided pleasant listening, radios were rare, newspapers mostly local and television is unheard of. To illustrate this, on my first day down there I met a man who didn't know President Nixon had resigned (this was in early August).

While travelling I picked up a few tips that could save the flying DX-er a considerable amount of time and worry...and money. First of all, before you leave, register your receiver with the customs office. This takes only a few minutes, costs nothing and can be done at the customs office of any international airport. It can save you from paying duty of a foreign made set when reentering the U.S. If you are flying, carry your receiver with you. Airlines are not responsible for, and will not accept responsibility for, loss or damage to any radio. And, finally, if your receiver is equipped to receive police bands, it may be illegal - so check before you go. DX-ing can be an excellent alternative to too much sun, or give you something to do when the string bikinis leave the beach.

portfolio

CHICAGO SUN-TIMES, Fri., Jan. 24, 1975

Plan to dismantle USIA advances

By Richard M. Weintraub
Washington Post Special

WASHINGTON — Recommendations that would lead to the dismantling of the United States Information Agency have been tentatively approved by a study panel headed by Frank Stanton, former president of the Columbia Broadcasting System.

The panel's recommendations, if adopted, would lead to a major reorganization of U.S. public information and cultural activities abroad.

The report is still being drafted, but its outlines were learned from governmental sources and confirmed by Stanton in a telephone interview Thursday.

The commission is expected to recommend creation of an independent Voice of America, the worldwide broadcast operation now run under USIA. It

would be made responsible to a reconstituted Board for International Broadcasting. The board, now responsible for Radio Free Europe and Radio Liberty, would become the central point for U.S. public broadcasting operations abroad.

The report would also seek creation of an Agency for Information and Culture within the State Department for control of all cultural activities abroad, now spread through the USIA and the State Department, and appointment of a new deputy undersecretary of state for public affairs.

The recommendations were tentatively agreed to at a meeting of the panel on Monday, and commission sources expect no major changes unless legal problems are encountered at the final drafting stage.

HANDICAPPED AID PROGRAM

TED F. POLING, ASSISTANT DIRECTOR
P. O. BOX 163 MOUNT STERLING, ILLINOIS 62353 U.S.A.
MEMBER: HAP BOARD OF DIRECTORS

Ted Poling wrote SWC after reading Scott Reeves' article in the February issue of PRENDX...and my interjected comment about the HAP Translation Committee. Ted says they don't put reception reports into foreign languages, but are just set up to translate items that DXers receive. Here are the translation fees:

1 QSL or postcard:	25¢
1 page letter	35¢
2 page letter (or one page both sides)	50¢
3 or more pages	25¢ per page

Items should be sent to the above address with the appropriate fee. As an admirer of the HAP, ye ed would suggest to each of you desiring this service to include an additional bit for return postage.

As an aside, Gene Moser, pres of HAP, talks on HAP via HCJB. And, our old friend, Harry van Gelder, speaks on Handicapped Listening via R, Nederland each month. Write the stations for more information. - - - - -

Roger Legge was checking over his countries listing the other day to see what he had, and found things a little different since he last sent verification requests 13 years ago. So, in organizing his old verifications (1934-1962), he decided to send in a QRP listing. He theorizes that the ionosphere is being so saturated with power that it is absorbing more and we are getting less signal strength per kw. It seems to him that the present 250kw transmitters are not putting in any stronger signals (on the meter) that the 50kw transmitters did 10 or 15 years ago. Write into SWC and SOUND OFF on this or any other theory. WE WANT TO HEAR FROM YOU! Anyway, we want to hear from Roger right now:

CONTINENT	STATION	FREQ.	WATTS	YEAR	
No. America	HIL	6500	50	1936	
So. America	PZH	6800	25	1937	Just fantastic!
Europe	HAAQ2	11850	200	1939	
Africa	Bissau	6993	50	1946	Where is your
Asia	XGRS	11880	500	1941	
Oceania	QMI (ship)	6010	50	1938	QRP TOTAL ? ? ?
TOTAL			875		

Ed Richezza says, "Benjamin Franklin is credited with a 'bold invention of (electrical terms) which we use today: charge, battery, minus, etc.'" fm: Most Dangerous Man in America.

The Local Power Company, Revisited

by Neal A. Perdue

In July 1974 Frendx I described my first encounter with the efficient but not too talkative trouble-shooter from my local Power Co., the Memphis Light, Gas, and Water Division. I have since then had two more occasions to call him, and the results should be of interest to anyone who has local noise problems.

This time the problem was a S-9 noise level. It was attenuated pretty well when listening to a fairly strong station, but reception of weak stations was impossible. I had recently moved up the street about a half a block, was on a different transformer, and I doubted that my ex-neighbors' heating-pad was the culprit this time.

In response to my first call concerning this new problem, he came out and listened to the noise, went out the door without a word, and that was the last I heard of him or the noise --- for awhile. About ten days later it was back, and was it ever! The worst I'd ever heard. I had just put my brand new Drake 2-C in the shack and I was so frustrated that I wished I was a kid again so I could cry. So, another phone call, wondering if they were possibly getting a little tired of complaints from my QTH. I had visions of him coming out and cutting off the power, and grinning at me and saying "OK, buddy- the noise is gone".

He arrived again. I knew that I needed him a lot worse than he needed me, so I offered him coffee. He declined. Well, you can't win em all. He then scouted around with the funny looking old portable with the floppy antenna for awhile. He returned to my yard and - so help me - started beating on my telephone pole with a sledge-hammer! I had to step inside for a minute to hide my laughing, and when I did I heard the noise disappear on the receiver every time he hit the pole. He also heard it on his portable. Modern technology had won out. It took about ten minutes to climb the pole, tighten the loose connections on the transformer insulators, and eliminate this most annoying noise problem.

I'll tell you what - if I ever have to call him again, and if he shows up with a shotgun, a can of worms, and a dead cat, I'll believe!

73, N.A.P.

A REVIEW OF THE R-392/URR

Devil of a Device

by

Morrie Goldman

Within the Past Year, a number of surplus dealers have begun advertising the R-392/URR receiver. The price for a working receiver seems to be universally \$195, and \$125 to \$150 for a 'repairable' unit. The receiver provides continual tuning (digital) from .5 to 32 MHz in 31 MHz bands, and one .5 MHz band. Triple conversion is used on the lower 8 bands, while double conversion is used on all others.

Calibration accuracy is typically 200 hz when calibrated against the nearest 100 kHz marker. Selectivity is variable to 8, 4, or 2 kHz (mechanical filters are not used). Sensitivity is specified to be better than 5 microvolts for 20 db.

The receiver performs best with 28.5 volts dc drawing 3 amps. Weight is 52.5 lbs. Audio output is .2 watt at 600ohms. Power and audio plugs are of the military variety.

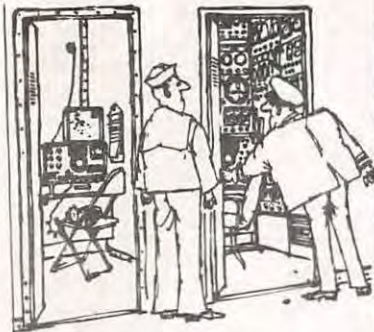
An external power supply is required, but it needn't be complex. The R-392 is a highly stable and accurately calibrated receiver. Especially with the addition of a good quality preselector, the R392 is a highly stable receiver suitable for adequate SWling. -----



RECEIVER R-392/URR

"THE REWARDS OF EXPERIMENTATION"

By Neal A. Perdue



"Beg your pardon, sir, but that is Ed Shaw's shack -- the ship's radio room is over here..."

Manufacturers' instruction book generally recommend a specific ohms range for speakers and earphones to be used with their receivers. DON'T take this info to be the gospel truth. I have noted great increases of voice-intelligibility on various rigs, using speakers and headsets of impedances other than those suggested by the receiver manufacturer. As an example, the Drake SW4-A manual suggest earphones in the .5 - 1Kohm range. A \$10 set of 8 ohm CB-Mate phones was vastly superior in both clarity and volume to my \$30 600 ohm Telex model. Likewise, Drake recommends the use of their 4 ohm MS-4 speaker, but the 8 ohm Heathkit SB-600 runs circles around it for clarity and sharp voice response. With my Drake 2-C receiver I get more volume and clarity with the Telex than with the 600 ohm \$30 set. So, don't be afraid to experiment in this area. You can't hurt the receiver, and the results may be quite gratifying.

UNDERSTANDING SHORTWAVE PROPAGATION

by

Jerry A. Lineback

A superficial knowledge of earth physics is necessary for the DX-er and SWL to understand how he can hear a radio station located on the opposite side of the world. Since the quality, time, and frequency of reception of a broadcasting station is dependent on current propagation conditions, it is worthwhile to know something about the earth and its atmosphere...the medium through which radiowaves propagate.

THE IONOSPHERE...The ionosphere is that part of the earth's atmosphere where ions and free electrons are present in sufficient quantities to affect the transmission of radio waves. Ions are atoms that have had one or more electrons knocked out of orbit around the atomic nucleus. Thus they have a positive (+) electrical charge. The electrons that were removed from the ions are then free to move about (free electrons) and have a negative (-) electrical charge. The process where neutral atoms have electrons knocked out to form ions is called ionization. The energy for ionization is primarily electromagnetic radiation from the sun. Charged particles from the sun and cosmic rays have a minor additional input to the ionization process. Since positive ions attract negative electrons, they tend to recombine. Since ionization is due to radiation from the sun, the intensity of ionization is dependent on the sun angle, i.e., it is greatest at mid-day and least at night. It is also variable with solar activity. Ionization is restricted to the upper levels of the atmosphere where the gases are sufficiently rarified that solar radiation can penetrate. 50 to 75 km is the lower limit and there is no distinct upper limit. Peak electron density occurs at less than 300 km. Densities of 10^5 to 10^6 electrons per cubic centimeter occur.

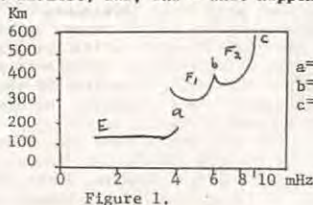
Contrary to popular belief, the ionosphere is not layered. Electron density increases gradually from the lowest levels to the F_2 peak near 300 km. The D, E, and F regions are altitude regions where certain electromagnetic phenomenon occur.

When a radiowave passes through the ionosphere, the free electrons in the medium oscillate in response to the electric field of the wave. The motions of the positive ions can be ignored. The magnetic field of the radiowave has no important effect on the electron motions, but the earth's magnetic field. The strength of a radiowave is decreased when electrons, spurred into motion by the wave, strike neutral particles, a process called absorption.

A radiowave will refract (bend) in the presence of ionized media. The wave will also reflect from the ionosphere. The height of reflection is a function of the frequency of the wave and the electron density. In order to reflect, a wave of a particular frequency requires a specific electron density that in turn occurs at a particular, but variable, altitude in the ionosphere. As the frequency is increased, the altitude of reflection is raised. If the frequency is high enough, no reflection will take place. Frequencies above 30 MHz generally do not reflect from the ionosphere.

Figure 1 is a graph that shows the altitude where a signal of a certain frequency (transmitted vertically) will be reflected. Figure 2 shows the vertical increase in electron density and that the layers are not distinct. Reflecting densities correspond

to rather indistinct maximum of ledges in electron density. (SWC editor's note: as a simple picture of what Jerry is referring to, I am taking the liberty - hopefully with Jerry's understanding - of adding this picture showing the critical angle of sky wave propagation. Taking a bit of poetic license, you can see two things where the sky waves penetrate the ionosphere: 1st - that frequencies, when raised above the critical angle, will not reflect; and, 2nd - what happens when frequencies above 30 MHz are transmitted).



a = critical frequency of E region
b = critical frequency of F_1 region
c = critical frequency of F_2 region

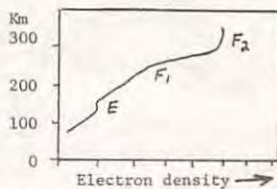


Figure 2.

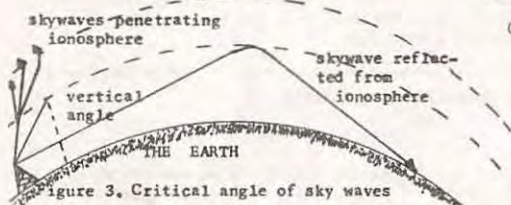


Figure 3. Critical angle of sky waves

D region--The D region occurs from 50 to 90 km in altitude. The D-region is dependent on solar radiation and is a daytime phenomenon. Ionization is very low at night and appears quickly with the sun's rays. The D-region is responsive to changes in solar activity. High solar activity, such as a strong flare, can raise daytime electron densities by as much as two times. The chief effect of the D region on radio waves is absorption. Signals of a frequency lower than 7 MHz are effectively absorbed during the day and solar flares may temporarily produce such a high concentration of electrons that all shortwave radio signals are absorbed, a phenomenon called a 'shortwave fade-out' (SWF). The daylight absorption characteristic of the D region is why a "darkness" path is usually required to hear a distant station broadcasting below 7 MHz.

E region--The E and F regions represent zones where the reflection of radiowaves occur. The normal E region occurs between 90 and 160 km. The level of maximum electron density at noon is about 110 km. Values of electron density vary with solar activity and sun angle. At night, the E layer rises and merges with the F region. E region stratification may be complex.

Sporadic E--These are patches of high electron density 10's to 100's of km in size that occur at about 110 km. They are not related to normal daytime E. Sporadic E is complex in nature and may be important to DX-ing. It deserves a lengthy discussion of its own.

F regions--The F region lies between 160 and 300 km and is generally divided into the F_1 and F_2 regions. The F_1 region may not always be distinguishable, but occurs at about 160 km. It may vary with the magnetic field. The F_2 region is more variable from day to day and hour to hour than the other regions. It may vary 100 km in altitude from local noon to local midnight. Temperatures increase with solar activity and cause the height of F_2 to increase. Winds may also help distribute electron concentrations in the F_2 region. Several anomalies in F_2 behavior affect radiowave propagation:

1. There is an annual worldwide variation in F_2 electron density. It is about 20% greater in December than in June, because the earth is closest to the sun in January.
2. There is a seasonal effect also. The density during the day is greater during the local winter than in summer. This is not really evident except during the sunspot maximum when there is considerable solar activity. The winter anomaly is most marked within a certain range of latitudes.
3. There is a high value in F_2 density during equinox. This is most prominent at low latitudes and in the southern hemisphere.

4. The F region in polar latitudes is complex and daily changes take place even when the solar angle does not. The F region continues to be ionized even during the polar night.
5. The F₂ region at equatorial latitudes is peculiar in that a higher electron density may occur at midnight than at noon.
6. "Troughs" or density lows occur between equatorial, mid-latitude, and polar F regions.
7. The F₂ region density in mid-latitudes decreases irregularly at night, but some ionization continues to be produced, especially on long winter nights.

MAIL CALL!

This is the first MAIL CALL we have had in quite some time! This can be a regular feature of SWC, you know. Questions, comments, and musings, and any other subject you want to discuss can be inserted here. WRITE SOON!

SCOTT REEVES writes: I contest the accuracy of the RRI address list printed in SWC March 1975. In an analysis of that list and the WRTH75 address list, I am able to make some general observations concerning the accuracy of the two lists. While info is mainly from my own 12 RRI QSLs, I feel these to be representative of other stations. While addresses from the "Official" list are plagued by many errors in spelling and street numbers, letters would probably reach the station. However, I found the WRTH75 address list to be much more accurate concerning station addresses, almost to the point of 100% accuracy. As in the case of the addresses, the names of the "Pimpinan" suffered spelling errors, but otherwise basically correct. If one does not wish to insult the verie-signer by misspelling his name, a letter could be just addressed to Kepala Studio (head of studio) or Kepala Tehnik (Technical Head).

SWC REPLY: You are correct, Scott, in contesting the accuracy of any list concerning Indonesia. However, my own personal opinion of the March list is that it was obtained from the Master Book at the Indonesian Embassy—and who else knows how to spell Indonesian names than an Indonesian? MAIL CALL would like to hear further about this matter. WHAT DO YOU THINK?

JEFFREY R. POWERS wonders: What is the inside story on FRENDX, and do you think that the members would write to the LOG REPORT more if you offered them incentives, such as an award of some sort to be given to the leading donator of a section for the month, year, or whatever?

SWC REPLY: Well, Jeff, we aren't sure what you mean by the "inside" story on FRENDX. We do know that Bill Eddings organized NASWA back in 1962, and continued by Dan Ferguson after Bill's untimely demise. A "New Member's Packet" is currently in the works and probably will contain NASWA's history. You'll have to be more specific on what you mean by "inside story". As to incentives, my own personal opinion that these are what you make them. My incentive for contributing to various columns, and other SW organizations, is that I feel morally obligated as a member to do so. If we had to "pay" members to contribute costs would not only rise, but our reputation would also suffer. Perhaps the AWARD CHAIRMAN would care to comment on this further. WHAT DO YOU OTHER MEMBERS THINK?

GEORGE SCHNABEL muses: I am thinking about doing some stories for FRENDX. (There's a difference between thinking and doing!) Would an interview, including photos, of the DX Stamp Service be suitable?

SWC REPLY: The interview would be most interesting, George! I am sure the members would like to know the "behind-the-scenes" story (or should I have said "inside story" hi) of this unique service. There are others besides you, George, who are "thinking" of doing articles for SWC. We just wish that all would stop "thinking" about it and DO IT.

KENNETH M. DUKE offers to write an article on a do-it-yourself preselector that covers all SW frequencies, and would like to know the reaction of such an article. He also says, "I have not contributed at all to FRENDX for the 2 years I have been a member. This sudden flourish of activity on my part has been precipitated in part by the acquisition of 2 new receivers which motivated frequency interpolation and preselector construction; by Neal Perdue's comments in the Jan 75 FRENDX that each member needs to contribute if NASWA is to remain strong, and by your request for any and every kind of article for SWC. Since I have enjoyed and learned from the efforts of others in FRENDX and SWC, I felt it was time to do some giving myself."

SWC REPLY: Ken, the article would be most welcomed! Thank you very much for the offer to contribute to NASWA, and, be assured, that the membership will benefit from your efforts. ISN'T IT ABOUT TIME THE REST OF YOU STARTED CONTRIBUTING????

THE LOJA SPECIAL

LOJA-ECUADOR

ECUADOR



by Scott Reeves

Loja (pronounced lō' hā), Ecuador, is a small city of about 30,000 people and it is the capital of Loja province. Loja is somewhat isolated from the rest of the world by being situated high in the Andes mountains, some 325 km from Quito, near Ecuador's southern frontier. Loja is about 2200 meters above sea level with a temperate and healthy climate. The city sports a good proportion of pure Castilian Spanish speakers in addition to two Universities, four night and eight day Colleges. Loja is in a primarily agricultural area and the main crops are coffee beans, sugar cane and mandarin oranges.

From a shortwave radio standpoint, Loja is a unique city. Not only are three often heard 60 mb stations (Radio Centinela del Sur, Radio Luz Y Vida, and Radio Nacional Progreso) located in Loja, but all these stations are excellent verifiers and seem anxious for reception reports. It would be well worth any DX-ers time to verify these three stations. However, a Spanish report is a must. Also noted is the fact that IRC's can not be exchanged for stamps in Loja (according to one station manager), so mint stamps should be sent for return postage.

1.505 Kc.

SOMOS UNICOS EN LOJA CON DOS FRECUENCIAS

5.020 Kc.

RADIO "CENTINELA DEL SUR"

Olmedo N° 11-56

Teléfonos 211 y 1166

Casilla N° 196

Radio "Centinela del Sur" was inaugurated 18 November 1956 with new equipment constructed in Loja by Flavio Coronel I., an electronics technician. While this same equipment is in use today, a great deal of it has been modified and new studio equipment added. Radio "Centinela del Sur" uses a 50 meter vertical antenna for their 2kw medium and short wave transmitters. The coverage area for mediumwave 1505kHz is local and provincial and shortwave 5020 kHz is for national and international coverage. 5020 kHz has been the official shortwave frequency since 1973. However, since early February, Radio "Centinela del Sur" has been using 4752 kHz with sign-off at 0406 GMT and sometimes 0306 GMT.

Daily programs of music, news, culture and sports are broadcast from 0645 to 2400 local (1145-0500 GMT) and all programs are in the Spanish language. These programs are for the millions of Ecuadorian listeners and, of course, are heard by DX-ers worldwide. They have received reception reports from all continents, including these countries: Sweden, Finland, Norway, Germany, Italy, Australia, Japan, South Africa, New Zealand, Zambia, and "naturalmente" from the U.S.A. Sr. H. Coronel V. notes that "DXistas" take a great interest in hearing and sending reception reports to Latin American radio stations.

Radio "Centinela del Sur" is a family owned and operated commercial station, and these are the people who work there: José Coronel Illescas (Gerente-propietario), Adolfo Coronel Illescas (Director), Hernán Coronel V. (Departamento de información nacional y internacional). There are seven locutors (announcers), two studio operators, one transmitter operator, plus one secretary. News services are prepared through the valuable collaboration of distinguished editors and reporters.

In the past years, Radio "Centinela del Sur" has used various shortwave frequencies between 5005 and 5050 kHz, but, as mentioned above, has been noted now on 4752 kHz. Although the official sign off time is 0500 GMT, the sign-off periods vary daily.

Address correspondence to: Sr. Hernán Coronel V., Radio "Centinela del Sur", Casilla 196, Loja. Sr. H. Coronel V. is an avid collector of flora and fauna stamps of the world, and all additions to his collection would be greatly appreciated.

CONGREGACION DE MISIONERAS
SOCIALES DE LA IGLESIA

Apartado No. 222 -- Loja - Ecuador

Radio Luz y Vida, a religious station owned by the "Misioneras Sociales de la Iglesia" and connected with the Dispensario Medico "San Martin de Porres", began operation in 1967. The purpose of the station is to spread belief in the true gospel and to promote good human relations. The programs are of a religious, cultural and national nature.

The station broadcasts on 1450 and 4825 kHz. Sign off times are variable and have been listed as 0300 and 0630 GMT. During days of national and religious holidays, 24 hour

broadcasts are common. Transmitter power on shortwave has been listed by the WRTH as 2kw. The 60 mb channel is usually a little below frequency. Reception has been difficult due to La Voz de las Fuerzas Armadas (Dominican Republic) until 0400 GMT, and then there is interference from La Voz de la Selva (Peru) on 4826 kHz.

The verification signer is Hermana (Sister) Amada Campos D, who sends a pennant along with the verification letter. Reception reports are minutely checked for errors against the station log. Mint stamps are requested for a reply, and the address is: Apartado 222.

RADIO NACIONAL PROGRESO

6000 Kilociclos - Banda de las 60 mts. - 10.000 Vats. de Potencia

EFRAIN HERRERA GUERRERO

PROPIETARIO - GERENTE

Estudio Avenida Gran Colombia Nros. 101 - 102

Casilla Letra V - Teléfono 6-37 - Loja - Ecuador

Radio Nacional Progreso was using 4775 kHz as their only outlet for several years, but in late 1973 they began using 5060 kHz, and since then, reception in North America has been good. The Gerente, Sr. Efrain Herrera Guerrero says that reception reports are valuable for continuation of the station's excellence into the future. In June of 1974 he was asking listeners to send him quality crystals for 1370 and 5060 kHz because good quality crystals are not available in Ecuador. In the past, the shortwave frequency has varied between 5056 and 5067 kHz - but perhaps he got his crystals as 5060 kHz has been stable since late 1974.

Initially, the programming consisted almost entirely of traditional Ecuadorian music with rare Spanish announcements. Since late 1974, the station has been noted with a changed format, namely the addition of more news and talks programs and more modern music. Favorite sign off times have been around 0330 and 0430 GMT, but all night programs have been noted at times - especially on weekends. A full identification with frequencies is given at sign-off, but there is no anthem or interval signal. Often, the station identifies as Radio Progreso.

The stationary from Radio Nacional Progreso says the power of the transmitters is 20 kw "super potencia", but the envelope indicates 10 kw. The WRTH 73 shows .2 kw on the old frequency of 4775 kHz, while the WRTH74 shows 5 kw. But, in any case, the station is often heard with good signals. Send reports to Avenida Gran Colombia No, 101-102 or to Casilla Letra V.

=====
 This is a test of a new ribbon to see how it comes out in the printing press. It looks lousy from this point of view as I type it, so be patient as you read this garbage. Thanks! Also, while I am at it, SWC needs your support. Reread Ken Duke's letter. It applies to each of us as well.
 =====

ODDS AND ENDS

In the March 1975 issue of the DSWCI's ShortWave News, this item was lifted as written by Erik Kjøie who compiled it from various Danish Press Items.

As of March 1st, the voice of Radio Denmark on SW will be muted in the South American and Far Eastern areas as a result of the felling of three of the old wood antenna masts set up in 1947. The masts were made of Swedish pine-wood, but by security reasons it was decided to fell three of the masts, which were rotting, as they threatened to fall down at any moment. However, the broadcasts of Radio Denmark will continue on SW without any changes, leaving only three antenna possibilities: the Greenland rhombic antenna (312° or 132°), and the Africa curtain antenna (155°). The Danish seamen's organizations will present a protest to the Radio Council and to the Government demanding improvements of radio facilities, but it is not expected to have any immediate effect.

Another SWN item, same issue, compiled from Dänemark-Redaktion of Deutschlandfunk: Pressure on DW. As the only western station Deutsche Welle is carrying programs in Amharic, one of the principal languages in Ethiopia. Recently, however, the new Ethiopian regime, which overthrew the old Empire last year, gave DW to understand through anonymous threats, that the rulers did not want DW to continue the Amharic transmissions, and if not stopped German business men and organizations would suffer for the decision. Following that, the director of DW went to Addis Ababa to discuss the matter, and when he returned home, he told that DW would have to bow to the threats. This resulted in a violent debate in DW's radiohouse and in the German press, as this case might form a precedent, that DW could be forced to stop other broadcasts. Late February the Radio Council of DW decided that the Amharic broadcasts from the station were to continue, however, not including any reports on the developments in Ethiopia.

THUS ENDETH THE LESSON....

NASWA ANTENNA/ACCESSORIES SURVEY--- Part 1

Compiled and edited by Neal A. Perdue, WDX4NAP
NASWA Scoreboard Editor
4937 S. Bilrae Circle
Millington, Tn. 38053

The response to this survey has indeed been gratifying. Tnx to all who contributed their time and effort. Some entries were accompanied by detailed sketches and diagrams. I hope that I will be able to translate adequately this type of information into print that everyone can understand--- in some cases it may be difficult. We will probably devote a page or two in FRIENDX to this survey each month until we have printed all contributions. Input to this project is still solicited. I've received 60 letters so far with more coming in every day. Many of you have voiced support for our UNITY and FRIENDSHIP motto, and many have encouraged me concerning the worthiness of this project. My very sincere "Tnx" to all.

- Dan Henderson, Md. 100 ft singlewire at 30 ft ht, N to S
70 ft singlewire at 30 ft ht, NE to SW
Ameco FCL-P preselector, homebrew antenna tuner
- Elton Hewitt, Id. 75 ft singlewire at 10 ft ht, E to W
50 ft singlewire at 20 ft ht SE to NW
30 ft singlewire at 15 ft ht SW to NE (indoor)
Unique Wire Tuner, Gilfer A-20 preselector
- Bob Zilmer, Wis. Mosley SWL-7 at 30 ft ht, N to S
Mosley SWV-7 at 30 ft ht, vertical
Aegis AF-1 at 30 ft ht, NW to SE
Dipole for 19M 25 ft ht, NE to SW
Ground plane ant--- more info needed, Bob.
Gilfer A-20 preselector, Hamgear PM II CX preselector
Autek Q-Box (modified)
- Larry Yamron, Pa. 70 ft singlewire at 40 ft ht
- Carroll Patterson, Ga. Hygain SW-9 at 15 ft, semivertical
Cornell-Dubilier Quiet-tone IP-19 interference-
filter. Shielded lead-in on antenna.
(Ed. note: I used this antenna when I lived in
a tight space and that it did very well) (I used
the lead-in that came with it, tho).
- Kevin Szot, Cal. Vee-beam cut for 4.55 Mhz, directional to NW at 25 ft
BC-221 freq meter
- Alan Mayer, Ill. 40 ft singlewire at 30 ft ht, E to W
75 ft singlewire at 30 ft ht, N to S
- J. Cole, Col. Mosley SWV-7, at 35 ft, vertical
50 ft singlewire at 20 ft ht, E to W
- John Creamer, Col. Mosley SWL-7 30 ft N to S
Mosley SWV-7 base at 30 ft ht (NO radials)
(John, I don't know why the vert. outperforms the
SWL-7. There are too many variables to consider.
It's really weird since you're not using radials.)
- Donald Schied, Pa. Mosley SWV-7, base at gnd level, vertical
50 ft dipole at 30 ft ht, NE to SW
LM freq meter (whazzat?) (It's the Navy version of the
BC221 - Dan F.)
- Gary Buccola, Ill. 50 ft singlewire, 10 to 25 ft ht, semivertical
SW to NE.

And that's it for this time, folks. Wait till I tell you what Ace-
DXer Ernie Behr has used to catch most of his 202 countries heard.
You're not gonna believe this one! 73, NAP

LISTENER'S



AUSTRALIA The Post-master General has been authorized to replace RA's Darwin facilities w/a pwr'ful new xmtr complex at Nangara, Western - Australia. There is still some chance that a site in the Darwin area may also be restored. (Keith Glover in Club - Forum, March 15 via Glenn Hauser, OK)

Dan Jamison
4491-F Lakeside South
Columbus, OH 43227

614-861-1125

Deadline: 15th

On the same subject, Australian Mike Willis of Hampton, Victoria, says that xmtrs of 100 and 250 KW in pwr have been ordered for the site.

*****AZAD KASHMIR***** Aussie Mike Willia has also flashed to LISTENER'S NOTEBOOK the latest sked fm Azad Kashmir Radio. It reads as follows:

0115-0350 on 3915; 0600-0815 on 7265; 1200-1400 on 4915; 1415-1830 on 3380.info direct fm the station, notes Mike.

CANADA RCI, due to economic conditions, will cut its cost of public relations in a way that usually hits the DX'er. RCI ann'ced a cut back on QSL design; that is they will only have a yearly change instead of the seasonal change of card design. This will also effect the details of confirmation and the necessary paper work involved. In other words, RCI and the BBC will have similar QSL policies. (via Arnold Lausevich, WI; Glenn Hauser, OK; an unid contributor, plus direct fm RCI.)

CBC NORTHERN SVC By the way, RCI will be extremely grateful if those who write in do not confuse RCI w/the CBC NS!! Day Light Savings Time is in effect meaning that the CBC NS is on and off one hour earlier. Their sked is fm 1028-2400 on 9625, 11720 (ex-5960 to 1400) and fm 0000-0507 on 9625 and 5960; all outlets are 250 KW'ers. (via Glenn Hauser, OK)

CBC ARMED FORCES SVC (duplicates NS programming, also in French) 1145-1215...Davenport on: 11720, 9560 - both 100 KW
1630-1700...17820, 15325 - both 250 KW'ers (via Glenn Hauser, OK)
2159-2230...15325, 11855- both 250 KW'ers

CLANDESTINE LIBERATION RADIO's Vietnamese svc is noted on new 4995//7416 and 18224 til 1700 s/off. This channel is formerly used by VoViet Nam. Liberation Radio has a new Viet pgm at 1500-1530 on 10010//7470, but not // 4995, 7416, 10224. (via Isao Ugusa, Japan)

VOICE OF THE MALAYAN REVOLUTION now b/c's in Eng at 0930-1000 and fm 1500-1530 on 11830 and 15790. (Isao Ugusa, Japan and Mike Willis, Austr)

VOICE OF NATIONAL UNITED FRONT OF KAMPCHEA had a special extended pgm on March 23-25 which commemorated the five year anniversary of NUPK's foundation. This extended sked was hrd at 0400-0600 and fm 1030 to past 1530. The station is now back to its normal sked. (Isao Ugusa, Japan)

RADIO PATHET LAO is hrd on 4630, ex-4660, poorly received in Japan. (Isao Ugusa)

Two Vietnamese b'ack clandestine stations, the VOICE OF THE PATRIOTIC MILITIAMEN'S FRONT and RADIO LIBERATION OF THE SOUTHERN PART plus one Cambodian b'ack, the VOICE OF THE PEOPLE OF UNITED INDOCHINA were all closed as of early April. (Clandestine broadcasting expert Isao Ugusa, Japan) ... perhaps these stations have reopened in light of the current situation in SEA - ed.

LIBERATION RADIO b/c's Eng in the External Svc now on 7489.5 x-7470 and // to 10010 at 1230 and 1430; notes Mike Willis fm his Australian listening post.

RADIO BAYRAK (CYPRUS) Has been rpt'ed by the BBCMS to be testing on 6150. No times were given for this item which was noted by Glenn Hauser, OK, while listening to the BBC World Radio Club. Glenn also said that this station was later reported on 6163.

The ?????? station: An AP story on the Falkland Islands, published in the March 9 DENVER POST, mentions "Argentine ...beams bilingual radio broadcasts to Stanley" without further details. No station appearing in the 1975 WRTH has an overtly Malvinian clandestine name, and no such pgms are listed. The station could be on MW, but a careful search during periods of enhanced FIBS reception might be productive... (Glenn Hauser, OK)

RADIO FREE AMERICA Although falsely listed as active in WRTH-75, "Radio Free America", the conservative pirate ship, is but a footnote in radio history. The ship, it can now be revealed, has been long since returned to its original owner and the radio gear stashed in the basement of Rev. McIntire's Cape May, NJ, hotel, the "Christian Admiral". However, the fight over the fairness doctrine will surely be renewed as a result of a recent expose in the NEW YORK TIMES MAGAZINE on the Kennedy/Johnson

administrations' use of the doctrine to suppress right-wing political radio commentary, not only w/McIntire's WXUR, but also in the landmark "red Lion" case decided by the Supreme Court. (DX'pert Larry Magne, PA)

COLOMBIA Radio Cinco is now on 5040; hrd at 1027 w/usual pgm. The freq is ex-4935. (Pitt McNeil, Washington, D.C.)

ENGLAND/UNITED STATES OF AMERICA Bob Underdown had questions about the VOA Ascension Relay and the BBC Greenville Relay so he wrote the VOA a letter asking for some insight. Ruth Walter, a Public Information Officer for the VOA, sent Bob the following explanation: "...The VOA and BBC have informal, reciprocal arrangements to use certain transmitters to improve reception of both international broadcasters. BBC's Ascension Island sta is presently b/c'ing VOA Portuguese to Brazil fm 1000-1100, and VOA SS to LA fm 1130-1400. In return the VOA's Greenville sta carries BBC English to Central America fm 0030-0330 and BBC SS to Mexico fm our Dixon and Delano, CA, stations fm 0215-0415." (very interesting Bob! Bob Underdown)

FINLAND Radio Finland is testing on a new freq, 6145, weekdays at 0700-0800, and Sundays at 0730-0830. Pgm'ing includes the EE b/c of the previous day. (via DX'er Glenn Hauser, OK and Jerry Slaff, NY)

GABON The Gabonese president has awarded a contract for four SW xmtrs, each of 50 KW, to a French firm. President Bonge qualified the contract with the following statement: "I intend to insure that the entire world hears the Voice of Gabon." The new transmitter complex will be located at Moyabi in the Eastern region of the country and should initiate transmission in the first quarter of 1977. The contract includes the erection of 20 curtain antennas with high gain, and should make reception of the Voice of Gabon practical in all of Africa, Western Europe, the Middle East, and in South America. Currently, RTV Gabonaise utilizes three SW xmtrs of respectively 4, 20, and 100 KW's. RTV Gabonaise advertises the current sked: 0430-0630 and 1630-2400 on 4777 (100 KW), 0630-1630 on 7270 (100 KW). (Fritz Buttner via Richard Schwartz, DE)

GERMANY, FEDERAL REPUBLIC By way of Larry Magne, PA; Glenn Hauser, OK; and an unidentified contributor.

In view of the vast media offer available in the United States, Deutsche Welle has decided to discontinue its North American Programme.

In place of the former transmissions, an information programme consisting of news and a press review will be broadcast as from April 2nd, 1975. There will be two 20-minute transmissions per day at the following times:

GMT	Localtime Eastern-Zone	Localtime Central-Zone	Localtime Mountain Zone	Localtime Pacific Zone
01.30-01.50	08.30-08.50 PM	08.30-08.50 PM	06.30-06.50 PM	05.30-05.50 PM
Frequencies				
6010 kHz = 49.92 m	6040 kHz = 49.87 m	6100 kHz = 49.18 m	9565 kHz = 31.36 m	
9090 kHz = 30.96 m	9745 kHz = 30.78 m	11965 kHz = 25.28 m		
05.30-05.50	00.30-00.50 AM	00.30-00.50 AM	10.30-10.50 PM	09.30-09.50 PM
Frequencies				
6075 kHz = 49.38 m	6185 kHz = 48.50 m	9545 kHz = 31.10 m		

GREENLAND Grønlands Radio's official sked, according to a recent QSL, is fm 1000-1200 and fm 1900-0300 on 3999 and 9575; fm 1200-1900 on 5960 and 11745. They are also on 5980 during all b/c'ing hours. many thanks Karl ... Karl Schwarz, IN)

IRAQ Gladys Keller, NY, has sent the following sked for Radio Baghdad:

For each Program: to Radio Baghdad Band	Wave Lengths Band	Power Watts	Transm. Times GMT UT
English	30.8 9745	20	19.30 20.20
French	30.8 9745	20	21.10 22.00
German	30.8 9745	20	20.20 21.10
Russian	41.78 7180	15	19.00 20.00
Turkish	75.74 3950	20	24.00 24.00
	49.25 6030	20	" " " "
	243 1210	20	" " " "
Persian	49.22 6065	15	08.00 10.00
"	25.20 3800	15	AND
"	25.24 3890	15	AND
"	243 1210	15	17.00 19.00
Urdu	19.48 15400	15	14.00 15.00
Swahili	31.14 9635	15	14.00 15.00
Hebrew	48.74 6155	15	10.30 17.30
Home Service to Radio Baghdad	31 W. SW		
	350 16.88		
	433.53 31.14		
	417.0 31.14		
	414 31.14		
	49.22 31.14		
	354.73 41.52		
to Saad ul Jumbeer	220.53 92.59		02.25 21.26
Kurdish	248 49.73		02.23 09.00
	248 49.73		12.30 22.00
Telerman	240.33 92.59		9.00 12.30
	240 49.73		
Syriac	246 75.74		15.30 17.00
	49.22 31.14		

ISRAEL Israel is going to Daylight Saving fm April 20, but FS pgms will stay in phase w/GMT, unlike last year. However, HS relays will go back one hour, and these include the popular 0500 and 1130 transmissions (relays of the "Arabic" HS). Technical problems continue, but may be solved in the coming months. Until then, FF 2200 may temporarily vanish. However, once these problems are resolved not only should FF reappear, but also an evening prime-time NA svc in EE/FF/HH and maybe other langs will be instituted for the first time. More on that in upcoming LN columns. Summer 75: ::::: 0400-0415 EE 0415-0430 FF 12025 (WCNA), 9815 (ECNA), 7395 (ECNA), 5900 (ECNA). 1030-1100 EE, 1100-1130 FF 15485 (southern US, Caribbean, north Africa), 15465 (Asia/Pacific), 15125 (ECNA), 12025 (ECNA). 2000-2055 EE 15485 (NA), 12025 (NA), 9815 (NA), 7395 (AF), 200-2245 FF (if Continued) 12025 (NA), 9815 (ECNA), 9605 (N Af & Caribbean), 7395 (Af). All xmtrs 300 KW, HH HS relay now all day to NA: 0300-0655 on 11643 (20), 9495 (100), 7413 (20); 0700-1930 15535 (20); 1930-2055 on 15535, 11643; 2100-2205 on 15535, 11645 9495. AA HS relay continues on SW on 5915 (20 KW) and DX experts may wish to try for very weak 13365 at 2200-2230; this will be QSL'ed for correct rpts to Box 7139, Jerusalem (power is not known, but is roughly 4 KW, I believe).
(via IBA Monitor and seasoned DX'er Larry Magne, PA)

MALAWI The MBC has a new sked; look for them on
3380 at 0257-0520 and 1700-2215
5995 at 0500-2110 (via SWC editor Charlie Wootten, MD)
7130 at 0600-1715

VIET NAM, NORTH The Voice of Viet Nam's HS in VV is hrd on 4931 w/fair sigs. This is possibly ex-4892, as nothing is hrd there.
(via DX'er Isao Ugusa, Japan)

Dave Ball, from Canada, says that a recently received sked fm Hanoi lists the VoV English transmissions at
0100 on 10040 and 12035
1000 " " "
1300 " " "
1600 " " "
1800 " " "

SINGAPRE Radio Singapore broadcasts fm 1330-0630 on 5052 and 11940 in English notes Karl Schwarz, IN.

SPAIN has shortened their English broadcast to the USA and Canada. They beam now to those areas each evening for three 45 minute periods; fm
0100-0145 0260-0245 0300-0345, all on 6065 and 11925.
(Ken Earhart, PA)

SUDAN Ken received a QSL w/updated station information. Please make the necessary changes to your WRTH... they b/c on 4994, 6150, 7120, 9505, 11835, 15170. The Arabic pgm is fm 0600-2400 and 0400-2200 on 4994, 6150, 7200, 9505, and 11835. Furthermore, the are Arabic, English, and local language transmissions fm 1500-1700 and 1300-1500 on 4994 and 6150. The Expartiates Svc (assumed in Arabic) is fm 2000-2100 and 1800-1900 on 11835.
(many thanks Ken ... Ken Earhart, PA)

SWAZILAND Swazi Music Radio's current sked, as of March 26, is
0400-0700 on 4980
0700-1600 6155
1600-1800 4980
1800-2200 3223

SNR uses a Gates 100 KW xmtr and they also have a 50 KW Continental MW operating on 1376 between 1600 and 2200. (via Richard Schwartz, DE)

UNITED STATES OF AMERICA An informed official source at the VOA had indicated that the VOA does not plan to follow the advice of the US - Advisory commision on Information and use 2½ Megawatt sw xmtrs in place of the current 500-and-under crop. The Commission, in its 1974 rpt, indicated such levels of pwr were not only necessary for transmission fm Continental US, but also as "the only way" to overcome rising QRM. However, the VOA has another way, viz. to use o-a-b fixed public channels, and has already begun this on 7325, 9915, 12040 via Wofferton, and further use of oob channels in the fixed public bands is being actively sought. Once can hardly help but note that the timing of the Commission's recommendation for use of exactly 2½ MW follows closely on the heels of the availability ofr sale of exactly such a unit by Continental Electronics of Dallas. It is to the VOA's credit that it is not yielding to pressure to buy these new transmitters and hopefully the DX fraternity will respond as warmly to the VOA's responsibility as it has critically to the 2½ MW proposal of the outside experts. This gets beyond the aspect of starting another power "war" and into the question, as raised by experiments by the Bureau of Standards at Boulder, of whether the

inosphere can withstand such concentrated blasts of RF without substantial adverse effects.

U.S.S.R. Tom Gavaras wrote to Radio Moscow asking about the QSL policy of Soviet time signal stations. This is the reply he got back. "Now, these RID, RIM, RNM stations. You're right, these are time stations. They are also used for the transmissions of standard high fidelity frequencies for general reception, and are subordinated to the State - Committee for Standardization. Unfortunately, they have nothing to do with broadcasting and I was told they never send out reception verifications."

A NEAT LITTLE THING! Yep, that's what Rick Charnes noted on a segment of the 49 meter band - a neat little thing. Rick noted that at 0420 on March 8, he noted that HCJB on 5970, BBCon 5975, RSA on 5980, WYFR on 5985, Bucharest on 5990, Voa on 5995, Budapest on 6000, and the BBC on 6005 were all in English! Thanks for sharing your observations with us Rick.

PROPAGATION Arnold Lausevich, WI, has sent us a propagation chart which was aired over HCJB DX Party Line. The chart is for ECNA, Spring, 1975.

METER BAND	GMT	CODE
13	1700-1900	C
16	1300-2300	O
19	1100-0100	
25	1000-1400	
31	0800-0700	Codes: C= closed
49	2100-1900	normally except when
41	0900-1200	SP*95 K=2
60	0700-1000	O= open earlier
90	0600- ?	if SP=90 or above

PROPAGATION The VOA's propagation wizard, George Jacobs, has for some time been trying to provide hobbyists with accurate predictive data on sw reception conditions. His most refined venture has been "Mail-a-Prop", a fortnightly bulletin that now not only predicts a couple of weeks in advance which bands will do what on which days, but now also includes a key to forecast by world zones so those interested in a certain region will know when to stay near the receiver for DX joy. I've found that, despite the forecasts being ham band format, they are not only useful, but also very accurate --- more so that the other forecast data usually available. A sample copy and cost information can be obtained from 11307 Clara Street, Silver Springs, MD 20902. Be sure to include an SASE. (via Larry Magne, PA)

MICKELSON HEADS U.S. RADIO IN EUROPE

Special to The New York Times

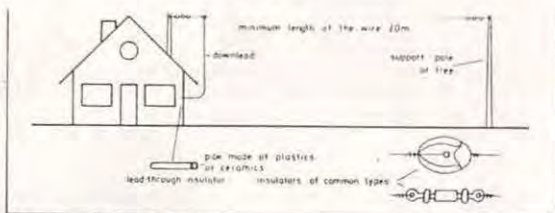
WASHINGTON, April 10—Sig Mickelson, chairman of Northwestern University's journalism department, was appointed president of Radio Free Europe and Radio Liberty today in a move to consolidate the operations of the two networks. He was chosen by a committee of the Board for International Broadcasting, which has supervised the networks since they were removed from dependency on the Central Intelligence Agency in 1971.

Mr. Mickelson replaces Radio Free Europe's William P. Durkee and Radio Liberty's Howland H. Sargeant.

The networks, with headquarters in Munich, have been broadcasting to Soviet-bloc countries since their inception in the early nineteen-fifties. They are now ultimately responsible to Congress.

Mr. Mickelson, a former president of CBS News, is expected to preside over a reorganization of the networks that may halve the employe total to 1,000.

*****TIBET***** opps, almost forgot this juicy item: I have just received a QSL fm Tibet w/frequency. How do you do it? Report the Hindi xsmn at 1600 s/on on 4035 when // to regular RP outlet of 6520. Rpts go to the normal RP address in Peking, and not direct to Tibet. (DX'er Mike Willis, Australia)
F A N T A S T I C Mike!!



Construction of a single wire antenna

Thanks to all of those who contributed to LISTENER'S NOTEBOOK this month. All contributions are most welcome. If you desire the return of your sked, please enclose a SASE with your report. Please all times in GMT and use only one side of the paper.

73 and Happy Listening,

LOG REPORT SECTION A

EDITOR: Bob Hill, WLARR/6
1626 Bonita Avenue
Berkeley, CA 94709

LOG REPORT SECTION ALOG REPORT SECTION A

ASSISTANT
EDITOR: Kevin Szot

LOG REPORT SECTION ALOG REPORT SECTION ADEADLINE: 15th of month

Just a few months ago things were humming -- now they're just ho-humming. If it's this slow now, what will it be like in two or three months? Don't forget, though: some of the best African and Pacific openings tend to pop up during the summer months. So if you don't mind eating a little static . . .

For those who enjoy unconscious humor at its best, your editor recommends the latest FBIS list, with "information updated to 1 June 1974." This has to be the most sidesplitting mishmash of incomplete, inaccurate and outdated SWBC data this side of White's Radio Log! We started counting the most egregious errors and finally gave up after finding 39 in the first four pages, not even counting omissions. For openers, how about Fiji listed twice in the 90-meter band. Or Surinam, listed once. Or . . . but why go on? For \$2.65 (if you're the masochistic type), you can find out for yourself. And just think: your tax money financed this fiasco! (To give the devils their due, however, the list begins to approach reality somewhere around 4700 kHz. Above that frequency, many of the stations in this book are actually on the air.)

But enough. Let us move along to a far more accurate source of information: you!

- 2332 JAVA. RRI, Jakarta. 1448 clas mx, ancts dual 4807/6045; is x-2307 (Willis 2/28).
2340 NEW BRITAIN I. R. West New Britain. 1020 C&W mx, Pidgin talk, slight QRM; one of best sigs ever from this one (Sparks 4/6). 1115 C&W mx, lang talk (Martin). 1130-1135 Pidgin, chorals; P (Mayer 3/24).
2350 JAVA. RRI, Yogyakarta. 1449 ancts dual 5047 (Willis 2/28).
2360 GUATEMALA. R. Maya de Barillas. 1130 SS ID, lang relig talk (Martin).
2428 NEW IRELAND. R. New Ireland. 1000 Pidgin relig talk, men's choir; 1100 usual chimes but no EE ID, then native mx. Best sig yet; no QRM (Sparks 4/6).
2450 PAPUA. R. Western Highlands. 1015 pop dance mx, M in Pidgin; fair sig, no QRM. All other 120M Papuans also audible but too weak to copy (Sparks 4/6). Pidgin, C&W mx, 1145 ID; P (Mayer 3/24).
2468 PAPUA. R. Northern District. 1150 chorals, Pidgin talk; P (Mayer 3/23).
2475 CHINA. Chekiang PBS. 1010 M&W talking in CC; clear sig (Sparks). (Sparks).
2510 S. KOREA. KBC, Taegu. 1030 Home Svc in KK: W singing, pop KK dance mx; F, clear
2760 CHINA. People's Liberation Army. Around 1345 with typical CC orch mx, drama-type dialog; 1358 march, 1400 pips, CC ID. Wk, unsteady. Assume 2nd harm 1380 (Hill).
2815.5 INDONESIA(?) 1347 Asian-type vocals, W ancts in soft voice; 1358 M in Indo(?), then W again, then both past 1400. No hope of ID thru line noise (Hill 4/8).
2850 N. KOREA. KCBS, Pyongyang. 1245-1320 orch mx, W soloist, KK talk (Thompson).
3031V N. KOREA. KCBS, Wonsan. 1100-1110 local pgm with local ID before and after. Perhaps x-2610V (Ugusa via NU). (Latter still hrd here 2596-2603 dual 3031. BH).
3076 INDONESIA(?) Mornings around 1315-1350, varied mx, nil QRM; prob RPKD (Hill).
3165 JAVA. RPKD Rota Madya, Surabaya. 1400 RRI Surabaya relay, 1500 RRI Jakarta relay
3200 UNID. 0318-0323 nice instrumentals, no talk. Harm? (L'back 4/10). (Willis 3/6).
3210 MOZAMBIQUE. RCM, Lourenco Marques. 0407 PP pops dual 4855 (Young).
3215 VENEZUELA. Ondas Panamericanas. 0236 light mx, TCs, ID; "Romántica" pgm (McN'1).
3223 VENEZUELA. Swazi Music R. 1820 pops, EE ancts (Willis 2/28).
3227 VENEZUELA. R. Occidente. 0200* with anth, IDs; F (Mayer 4/5).
3240 ECUADOR. R. Turismo. 1130 Latin mx, SS talk, ID (Martin).
3240 PERU. R. América. 0450-0514* US pops, M&W in SS; ID; no anth at s/off. Ute QRM (Tuchscherer 4/6). 0515 pop songs, SS ID (Sparks 3/17).
3240 SWAZILAND. Trans World R. 0355 relig pgm, 0400 ID & into vernac // 6155 (Young).
3243.7 UNID. 0527 mx, 0530 M ancts; weak modulation (Young).
3244 (T) IRAQ. R. Baghdad. Believed the stn with AA-type ancts, no ID (Willis 2/28).
3245 (T) PAPUA. R. Kerema. 1120 lang talk, local mx (Martin).
3245 VENEZUELA. R. Libertador. 0050 Arabic talk & mx, 0100 seemed into Ital (Martin).
3250 KALIMANTAN. RRI, Banjarmasin. 1431 W in Indo, 1432 gamelan-type mx with chant-type singing; poor QRM (Szot 3/22).
3250 S. AFRICA. SABC. 0210-0315 all-night EE with pops, ads, piano/vocal/orch mx; only F during mid-March (Moritz, Brunner, Thompson, Troy).

- 3255 LIBERIA. ELBC. 2300 EE ID, into nx; 232 (Miller 3/21).
 3255 VENEZUELA. Voz de El Tigre. 1044 choral mx; F (J. Davis).
 3260 NEW GUINEA. R. Madang. 1200 EE ID, into Pidgin nx; F (Mayer 3/23).
 3265 MOZAMBIQUE. RCM, LM. 0258 IS, *0300 Afkns/EE ancts & pgm (Young). 0319-0330 EE DJ, TCs, IDs, rock (Schwarz). 0340-0400 EE, pops, chimes, ads, usual pgm; F with CW QRM (Perdue). 2126 EE/Afkns DJ-type pgm, US/Brit pops, ads for Virginia tobacco; F-G dual 4924 (F) (Salmaniw).
- 3270 ECUADOR. R. Cosmopolita. 0402 Latin mx, ancts (Young).
 3275 PAPUA. R. Southern Highlands. 1205 chorals, Pidgin talk; P (Mayer 3/23).
 3275 VENEZUELA. R. Mara. 0305 continuous LA mx, 0355* ID, anth; F (Perdue).
 3277 JAVA. RRI, Jakarta. 1435 mx, Indo talk; barely audible and worse than the other 90M Indos, though all were there very poorly (Sztot 3/22).
- 3280 ECUADOR. Voz del Napo. 0200-0330 SS, Andean mx, songs, ID (Martin, Miller, Duke).
 3285 BRAZIL. Emissora Educadora Rural. 0146 PP ID, samba mx; F (Mayer 4/1).
 3290 GUYANA. GBS. 0015 pops, EE talk (Martin).
 3290 PAPUA(?) R. Central District(?) Around 0850 in EE or Pidgin under gigantic ute carrier. Not saying it wasn't Guyana but didn't sound like GBS (Hill 4/15).
- 3295 VENEZUELA. R. Trujillo. 1018-1033 with clear IDs, YV pops; even mentioned "música venezolana" -- prob due new law they must play certain % YV mx (Earhart).
 3300 BELIZE. R. Belize. 0500-0510* EE, nx, relig talk; G (Dorbert).
 3300 CHINA. PLA. 1437 in CC // all the other PLA freqs. Just what everybody needed -- another PLA channel (Sztot).
- 3300 GUATEMALA. R. Cultural. 0230-0425 EE relig pgms (Back to Bible, Voice of Missions, etc.); 0301 ID (Troy, Thompson, Duke, Nebron).
 3306 RHODESIA. RBC. 2140 easy-listening mx, 2200 EE ID; P with severe QRM (Salmaniw).
 3310 CHINA. Kirin PBS. CC cmntry by M&W (Sztot 3/22). (Time? BH).
 3316 SIERRA LEONE. SLBS. 2211 tune, 2215 nat'l nx in EE; F with bad het (Salmaniw).
 3325 ANGOLA. Emissora Oficial. 2202 PP nx; G (Salmaniw).
 3325 GUATEMALA. R. Maya. 0210-0230 SS, organ mx, W relig vocal, sermon (Thompson).
 3325 VENEZUELA. R. Monagas. 0345 F (Troy). 0358 ID, 0403 s/off (Duke). 0500 (D'bert).
 3325 W. IRIAN. RRI, Jayapura. 1400-1415 Indo play; 353 (Nebron 3/18). due)
 3325 (L) ECUADOR. Ondas Quevedeñas. 0405-0420 Andean & LA mx, talk abt Ecuador (Percomoro IS, ORTF. 1820 Comorian ancts; F-G (Willis 3/1).
 3335 TAIWAN. BCC. 1226 kinda CC-sounding mx, W DJ; F (Sztot). 1615 ID; VG (Willis).
 3336 SENEGAL. Rds, Ziguinchor. "Ziggy" hrd 0746-0802* Af mx, FF talk; F-G (Salmaniw).
 3338 MOZAMBIQUE. RCM, LM. 0400 Af mx, lang ancts, gongs, ID (Sparks, Young).
 3339 ZANZIBAR. RTZ. 0338 chants, 0352 QRM from Mozambique (Young). (Nice going, Jim -- a super WCNA logging! BH).
- 3342 HAITI. R. 4VEH (4VSO). 0040 FF mailbag pgm, address given; fine except for bad CW QRM at times (Salmaniw). 0135 relig; QRM (Troy).
 3355 VENEZUELA. R. Valencia. 0245; F (Troy). (Pse include pgm details! BH). 0400* ID (Sparks). 1011 ancg "en Valencia, Radio ... " -- not as "Radio Valencia," not as YVLC (Jones 4/6).
- 3360 GUATEMALA. Voz de Nahualá. 0340 ID (Troy).
 3365 VENEZUELA. R. Puerto La Cruz. 0030-0050 SS with Latin fare, bunch of IDs. Lots of laughing -- sounded like some YV groupies were visiting the studio to pant over the local DJ (Moritz). (Not at all, John -- they were there trying to get Kevin's address. BH). 0200-0220 SS, LA mx (Dorbert). 0525 fiesta mx, IDs (Sp'ks).
- 3375 ANGOLA. Em. Oficial. 2205 PP nx; G-E (Salmaniw). 2254 easy mx, PP talk; 2300-2315 nx, then mx to 2341 when full PP ID; 2400* "A Portuguesa"; F-G (McNeil).
 3375 BRAZIL. R. Olinda Pernambuco. 0836 PP talk and mx; 222 (Jones).
 3380 ECUADOR. R. Iris. *1100V with ID, mx, ads (Martin). 1108 Andean mx (Jones).
 3380 MALAWI. MGC. 2202-2210* EE/Chichewa talk, IDs, anth (Salmaniw, McNeil).
 3385 BALI & LESSER SUNDA IS. RRI, Kupang. Indo light-rock rhythms, electric guitars a la Creedence Clearwater around 1446; F-G with crummy audio (Sztot 3/22).
 3385 BRAZIL. R. Clube Teresina. 0823 PP, native mx (Jones 4/3).
 3385 FR. GULIANA. ORTF. 0920 M&W in nx (Troy). (Assume FF. BH).
 3385 NEW BRITAIN I. R. Rabaul. 1107-1132 EE/Pidgin, variety of mx; 1115 drum IS, then nx, ancts in EE; F (Schwarz 3/20).
- 3385 USSR. 1201 M&W in RR nx (prob Moscow relay) mix with Rabaul. Was hrd around this time last year, too. Must be a feeder (Hill 3/23).
 3390 CHINA. R. Peking. *1800 in Farsi(?). Also hrd 1200-1300+ under unID Asian stn (Willis 3/10). (Latter perhaps Kabul back from 4750? BH).
- 3390 ECUADOR. R. Zaracay. 0415, 1030-1100 SS, Andean mx (Duke, Moritz, Martin).
 3395 VENEZUELA. R. Universidad. 0300-0315 SS ID, nx, Latin mx (Moritz).
 3396 NIGERIA. NBC, Kaduna. 2212 Af mx; E (Salmaniw). (Walter, this is not RTV. BH).
 3396 RHODESIA. RBC. 2200 "This is the Rhodesian BC Service"; P (Salmaniw).
 3400 CHINA. PLA. 1235 W screaming; revolting mx (Martin).
 3411.5 GUATEMALA. R. Cultural. Spurious sig around 0230-0425 // 3300 (Mayer, Hauser).
 3414 SUMATRA. RRI, Medan. Indo talk // 4764 (Sztot 3/22). (Time? BH).
 3463 JAVA. RKPDK Pasuruan. 1400 Surabaya relay; later ID (Willis 3/5). Delete listing for RPKD Timur (Tyson via NU).
 3473 JAVA. RKPDK Jombang. 1600* good level. As with Pasuruan (above) and Jombang (see 3776), this one drifts somewhat (Willis 3/4).

- 3522 MALDIVES. R. Maldives. 1300 EE pops, 1330 Hindi pops; all ancts in Maldivian to 1500*. Vy strong. Stn claims they op on 3490, refuses to QSL 3522 (GVC via UADX).
- 3541 JAVA. RPKD Bngkayan. 1400 nx from Surabaya; is x-3578 (Tyson via NU).
- 3560 N. KOREA. R. Pyongyang. 1330-1400 M&W in KK, also orch and choral mx. WRTH says EE scheduled for this time period (Thompson). 3/22).
- 3600 UNID. 0630-0655+ slow vocals, M&W talk in lang; vy wk. Prob Af or harm (Perdue)
- 3607 JAPAN. NHK Home Svc relay. Hiroshima 0904 JJ nx by W; G. Kawaguchi s/on 1000 (SzoT). Kawaguchi 1058 JJ, 1100 tone and into nx (J. Davis). 1240 "NHK" (SzoT).
- 3612 JAVA. RPKD stn this freq is Banjar, not "Bandor" (Tyson via NU).
- 3762 JAVA. RPKDK stn here is Tuban, not Kupang (Tyson via NU).
- 3892 N. KOREA. RP. 1520 FF; good QRK. Don't confuse with RPKD on 3893 (SzoT).
- 3910 JAPAN. FEN. 1150-1155 EE, PSAs, US light mx; fair with ham QRM (Lineback). (Idle question: With the perfectly good word "ham" firmly established in everyone's vocabulary, what possible reason is there for the dreadful "abbreviation" "ARO"? Let's give it a decent burial BH).
- 3915 MALAYSIA. BBC Tebrau. 1453-1515 EE, BBC-T s/on mx; 323 (Nebron). (Willis 3/13).
- 3952.5 INDONESIA. UNID, seemed RRI, 1200-1300 with Jakarta relay 1200, west Indo TCs
- 3953 IRAQ. R. Baghdad. 1520 AA chants dual 6095; drifts (Willis 3/3).
- 3975 ENGLAND. BBC. 0218 Farsi by W, then US-style EL mx; lots of ham QRM (Slaff).
- 3980 S. AFRICA. SABC. 0228 pops, cigaret ads, nx at "1/2 past 4" (Jones). 0245-0255 Afkns talk, mx, ads; 343 (Nebron). 0425 EE, clas mx, ads; E (Perdue).
- 3987 S. AFRICA. R. RSA. *0426 IS, ID, anth, into lang pgm; G (Perdue). (B. Davis).
- 3995 ASIATIC RSFSR. QTH unknown. *1200 Mayak pgm, F-G to 1430 or 1500; fades by 1600
- 3995 S. AFRICA. R. RSA. IS till *0256, then ID, anth, EE nx (Miller).
- 3995 N. GERMANY. Deutsche Welle. In letter to Earhart, stn says this freq is "omni-directional"; if so, why is it ancd and listed as "beamed" to NA? (Hauser). (By ITU rules, a country may not beam to another country within a band reserved for amateur radio by the target country. But some stns half vays of ignoring that.
- 3999 GREENLAND. Grønlands R. Hrd 0416 tho not listed for then; hvy QSB. BH)
- 4000 SULAWESEI. RRI, Kendari. 1135 ID (Willis 4/1).
- 4030 ASIATIC RSFSR. Anadyr. 0420 RR talk (Young). 0520 light evening mx; G (J. Davis).
- 4035 TIBET. R. PeKing. *1600 Hindi dual 6520. Will QSL this avc! (Willis 2/28).
- 4047 UNID. Someone 1315-1350, bits of mx interspersed with talk; vy wk, chopped by CW, splattered by USSR/4050. Perhaps RRI, Bengkulu? (Hill 4/6).
- 4068 CHINA. Huhehot, Inner Mongolia. 1253 "East IS Red," M&W ID, mx; VG (SzoT).
- 4190 CHINA. RP. 1245 Home Svc dual 6225 (Willis). (TBS says Home Svc in Mongol here 2200-2250 and 1200-1250, Michael. BH).
- 4200 CHINA. RP. 1110 SS ancts dual 5545; irreg (Willis 2/27). *1300 "EIR," then Indo ID by M and nx (warta berita) by M (SzoT 4/5).
- 4330 CHINA. PLA. 1044 CC mx, W talk; G. /s 4380 (P), 5170 (G), 5240 (F) (Salmaniw).
- 4375.5 INDONESIA. BH's unID RPKD at 1152 W, then M; 1156 lost when ute s/on (J. Davis). No longer being hrd; must have either QRT or QSY. (Hill).
- 4380 CHINA. PLA. (See 4330) (Salmaniw).
- 4395 ASIATIC RSFSR. Yakutsk. 1148 light EL mx; G (J. Davis).
- 4425 BOLIVIA. R. Paititi. 0336 SS, Latin tunes; F atop ute (Mayer 3/20).
- 4500 AUSTRALIA. VNG. 1105 time sigs/ancts; P (Salmaniw).
- 4520 USSR. Per Gospozha Stepanova, no USSR stns op this freq (Dexter via NU). (Very interesting -- especially since Bill Davis and I have been hearing Palana here for many months. BH).
- 4632V CLANDESTINE. V. of Pathet Lao. Around 1425 in Lao; severe het de powerful carrier on 4630. Down to this reading from usual 4660V (Hill 4/6).
- 4675 CLANDESTINE. V. of NUFK. 1130 M&W in lang; P (Martin).
- 4680 ECUADOR. R. Nac. Espejo. Pops, SS, 0326 ID (Duke).
- 4708 N. VIET NAM. Hanot. 1408 VV nx by W; P, ute QRM (SzoT).
- 4710 UNID. 1255-1330+ unID RR-type stn irreg; not USSR or China -- a real mystery (Willis). (Likely RR wx stn hrd daily here with W giving meteo data. BH).
- 4719 SULAWESEI. RRI, Ujung Pandang. 1305 Indo nx(?); daily regular (Salmaniw).
- 4725 BURMA. BBS. 1252 BB(?), Asian mx, W ancr; G (SzoT).
- 4734V PAKISTAN. R. Pakistan. Around 1300-1500, usual subcontinental fare of chants, wailing, local mx, lang ancts (Hill, Young, Willis, Sparks).
- 4736 JAVA. RRI, Jember. 1200+ with vocals, spotty; 1500 RRI IS and apparent s/off. Tough copy, big het from Pakistan (Shaw via NU).
- 4750 PAKISTAN. RP. 1443 SC mx, Indian-type chants, lang ancts; F (SzoT 4/5).
- 4752 ECUADOR. R. Centinela del Sur. 0212 SS, mx; 333 (Jones 4750). 0408* complete ID (Field 4750A). 0345-0410* SS, US pops, no anth (Tuchscherer).
- 4755 BRAZIL. Rdif do Maranhão. 2256 PP ID & fanfare; F (Mayer).
- 4755 COLOMBIA. Em Nuevo Mundo. 0405 SS nx, 0408 Alka-Seltzer ad, LA mx; VG (Salmaniw).
- 4762 MONGOLIA. R. Ulan Bator. (T) 1115-1140 M&W lang talk, SC-type chants by W; hrd during selective deep-Asia opening -- no Latins audible (Perdue 3/28). 1420* anth after usual nx in MM. QRM de USSR/4760, China/4759, RRI/4764 (Willis 3/29).
- 4764 SUMATRA. RRI, Medan. 1120 Indo talk, Bee Gees song; 1130 pips, talk, local mx to 1150 tune-out; F in QRM (McNeil).
- 4765 CONGO. RTVC. *0427-0440+ repeated 7-note IS, Af mx, FF(?) ancts, mention of Brazzaville, etc.; VG (Perdue). 2245-2300 FF nx, mx, ID; 322 (Schwartz).

- 4770 CHINA. RP. 1200 Home Svc; later mixing with Pyongyang (Willis).
- 4770 N. KOREA. R. Pyongyang. *1000-1013* in KK with short ancts. Certainly odd; never hrd at this time since (Willis). (TBS shows *0900-1800*. BH). (Schwartz).
- 4770 LIBERIA. ELWA. 0600 EE nx, relig talk (Dorbert). 2115-2130 EE ID, nx, sermon.
- 4770 VENEZUELA. R. Bolivar. 0815 SS, Latin mx, ID; vy strong (Perdue).
- 4772 ECUADOR. R. Genit. 0400-0425* SS, nice Andean mx, close with anth (Tuchscherer). UnID 0300 mx pgm, occas SS ancts; 0401 ID not QRM, 0406*. QRM de YV (Field).
- 4775 COLOMBIA. Voz de Maria. 0335-0355 W talking; weak sig (Field).
- 4775 JAVA. RRI, Jakarta. New freq 1005 nx dual 3277, etc. (Willis 3/21). UnID Indo 1405, mention of Jakarta and the Javas; VG, just as good as Yogyakarta/5047 (Sztot). Excellent sig here around 1415 in Indo (Hill).
- 4775 AFGHANISTAN. R. Kabul. 1330 Urdu (listed) nx, then mainly clas mx; F (Salmaniw).
- 4777 GABON. Voix de la Renovation. 2305 vernac, Af mx; 2325 FF nx; 222/322 (Schwartz).
- 4780 AFARS & ISSAS. ORTF. 1541 AA; beware RR outlet also here this time (Willis 3/3).
- 4780V MALI. R. Mali. 2330 mx dual 5995 (Duke).
- 4780 VENEZUELA. Voz de Carabobo. 0038-0126 carrying Presidential message on the nationalization of steel companies; R. Nacional IDs; G (Salmaniw).
- 4785M MALI. RM. 2159 ORTF ID, then local ID; G with some het QRM (Salmaniw).
- 4786.8 COLOMBIA. Ecos del Combeima. 0110-0130 SS, LA mx, IDs (Perdue 4787M, Troy 4785). Pops, SS, 0434 ID (Duke). 0956 many IDs, LA mx ("Una producción de Ecos del Combeima") (Jones 4785). 1020-1030 SS ancts, IDs, vocals; G (lineback 4785).
- 4788 TURKS & CAICOS. VSTB. 2130 EE nx (Martin). 2202-2215 ID "VSI Radio," calypso mx, wx report; 333 (Schwartz). 2329-2348* EE DJ, TCs, IDs, rock & soul (Schwarz).
- 4789 PERU. R. Atlántida. 0426 ID, Latin mx, frequent IDs and TCs; VG (Salmaniw). 0432 ID, song "Is Everybody Happy?" (J. Davis, Shingler). 0317 pops, lively DJ (Jones).
- 4795 BRAZIL. R. Tabajara. 0931 PP, background mx, ID, anct (Perdue).
- 4800 ECUADOR. R. Pop. Independiente. 0454 mx, SS anct mentioning Cuenca; F-G with trouble from ute down a few kHz (Robins). 0914 ID, TC, mx (Jones).
- 4800 VENEZUELA. R. Lara. 0230; good level (Troy). (Pgm details, pse. BH).
- 4805 BRAZIL. Rdfid do Amazonas. 2310 M6W reading ads, ID; 322 (Miller).
- 4807 DOMINICAN REP. R. Norte. 0446 ID, Latin mx, frequent ads; E (Salmaniw).
- 4810 S. AFRICA. SABC. 0300-0315 EE nx, guitar mx, many ads dual 7280 (Thompson). 0438-0450 EE & Afkns talk, mx from "Guys & Dolls," TCs, ads (Moritz, Slaff). 0505-0515 EE & Afkns, mx, ID, ads, TC; 333 (Schwartz).
- 4815 PERU. R. Samarén. 0245 EL mx, ID (Perdue). 0458 & 0500 IDs ("R. Samarén, La Voz de la Revolución Peruana"), 0502* with anth; F-G with utes (Robins). 1047-1056 mx, full ID with calls and freqs (Jones).
- 4816 UPPER VOLTA. RTV Voltaïque. 0715 Af chants; G but low modulation (Salmaniw).
- 4820 THE GAMBIA. R. Gambia. 0700 BBC nx, 0709 EE local nx; great sig but grossly over-modulated, causing terrible distortion (Salmaniw). 2159 Af song, 2200 break for (poss) nx; pops to 2230 EE ID; P (McNeil).
- 4820 HONDURAS. Voz Evangelica. 0320 "Back to the Bible" (Troy). 0434-0437 ending EE relig pgm with final anct. During later ck, did not notice anyone else on their xmtr, despite item in last Frendx (Moritz).
- 4825 ASIATIC RSFSR. Vladivostok. 1300 presumed CK after IS, s/on; P (McCoy).
- 4825 DOM. REP. Voz de las Fuerzas Armadas. (T) 0200-0210 occas SS ancts, mostly semi-clas instrumentals; ID garbled but QTH definitely Santo Domingo; P (lineback). (T) 1150-1200 SS mx featuring vibraharp or similar; on the way out (Earhart). 2228 mx, 2230 full SS ID, then EE dramatization/history of D.R.; G (McNeil).
- 4825 ECUADOR. R. Luz y Vida. (T) Mx, W ancr in SS, sudden 0449* (Duke 4826). Back again 0600-0800, SS anct, nice Ecuadorean mx (Willis 3/22).
- 4825 GUATEMALA. R. Mam. 0030 tune-in, mostly W talk; 0202 ID; some QRM from Dom. Rep. My 800th station (Field). (Earlier rpts of R. Tezulutlan QSY here erroneous. BH).
- 4825 TANZANIA. R. Tanzania. 2044 Af mx, 2058 Hawaiian (sure sounded like it) mx, 2100 Swahili talk past scheduled 2100*; G with low modulation (Salmaniw).
- 4825 VENEZUELA. UnID 0400*, didn't catch ID -- just country & anth (Field 3/25). (It could be R. Tricolor, known to vary up from nominal 4820. BH).
- 4828 RHODESIA. RBC. 1548 EE (poss ads); only occas words QRM due weak modulation. Is not a long-path regular like SABC (Hill 4/6).
- 4828.3 UNID. Latin 0440-0450* W ancr in SS, Andean mx, then relig pgm with organ mx. Mention of "Cristi" and s/off. Suspect Voz de la Selva off freq (Perdue 3/17).
- 4832 COSTA RICA. R. Capital. Often this QTH (Troy). (Some details, pse! BH). 1135-1145 SS light mx, ID; G (Moritz).
- 4835 S. AFRICA. SABC. 0515-0520 EE farm pgm, discussion of wool industry (Schwartz).
- 4840 (T) CHINA. PLA. 1255 CC, flute mx, talks; F (McCoy).
- 4840 PERU. R. Andahuaylas. Mx pgm after YV s/off 0300 on Sunday; IDs at various times (Field). 0412-0457* nice Andean mx, SS, off with anth (Tuchscherer).
- 4840 VENEZUELA. R. Valera. 0920 SS ID, many ads, Latin mx; G (Salmaniw).
- 4843+ CONGO REP. RTVC. Pointe Noire. 0515-0525 vernac talk, vy muffled (Earhart).
- 4845 BOTSWANA. R. Botswana. 0358 anth, *0400 ID but sure didn't sound EE as other DXers have reported. Some choral mx too (Sztot). (Likely Setswana, Kevin. BH). (T) 0438-0502 Setswana talk, organ mx, vocals by small group; 0500 pips (Earhart).
- 4845 BRAZIL. Rdfid Teresina. 0400 PP ID after Bucaramanga s/off; P (Mayer).
- 4845 MALUKU. RRI, Ambon. 0933 vy strong with Indo mx dual 7139 (Young). 1236 Indo mx and talks, 1253 ID; F (McCoy).

- 4845 PERU. R. Sullana. 0210 W talk about Peru, many IDs; F atop Colombia (Mayer).
- 4850 CHINA. RP. HS2. 1140-1150 talk or nx by W in CC, then CC mx; much QRM (Shingler).
- 4850 DOM. REP. R. Clarín. 0045 good level (Troy). (Pgm details, PSEI BH).
- 4850 MAURITANIA. RNM. Back here from 4845. (T) 0725 AA chants to 0730, when nx in AA (Brunner). 2158 AA chants (endless), lang talk; 343 (Miller). 2235-2301* Middle-East-type AA between brief mx on bass stringed instr, then talk to s/off (E/hart).
- 4850 VENEZUELA. R. Capital. 0955-1050 with definite ID. Till 1005, M6W with farm show, 1005-1030 two records and two 9-minute strings of ads (1). Promo said they've been rated #1 in Caracas for 6 years. Move from 3305? (Callarman). (John, good to hear from you after many years. Guess you, Niblack, Behr and I are the active survivors from URDXC1 BH).
- 4854 MOZAMBIQUE. RCM. LM. 2140 EE & PP pops (light piano & rock), W ancr; F (Sal'iw).
- 4855 COLOMBIA. R. Neiva. 0340-0502* LA mx, IDs, anth*; slight het (Tuchscherer).
- 4860 VENEZUELA. R. Maracaibo. 0105 ID; G (Troy). 0128-0230 tropical mx pgm and using slogan "R. Maracaibo Musical," sub-slogan "Emisora del Pueblo"; lots of ads and promos for upcoming pgms (Callarman).
- 4860 UNID. 1201-1210 W in CC(?), SEAsian vocals; 1200 pips after anth. P amidst much QRM (Shingler). (Undoubtedly USSR/FE, site unknown. Chita reactivated? BH). man).
- 4864.8 BRAZIL. R. Clube do Para. 0341 variety of LA pops, 0402:30 carrier cut (Callarman).
- 4865 AZORES. Em Reg dos Açores. 2103 PP nx, many IDs; G but Latin coming in by 2130
- 4865 CHINA. Kansu PBS. 1506 CC nx by W; P QRM (Sztot). (Salmaniw).
- 4870 DAHOMEY. Voix de la Rev. 2255-2305* FF, group songs, chants, anth*; P (Moritz).
- 4871 W. IRIAN. RRI, Sorong. 0910-0932 Indo mx, ancts; strong (Young).
- 4875 BOLIVIA. Cruz del Sur. 0125 IDs, ancts, relig pgm on Easter night; QRM/QRN (Perdue). 0949-1001 segued mx, TCs 2 min fast, then 15-min pgm of W in Indian lang, Andean mx; 1017-1029 church choir, SS talk; full ID MM/SW/FF after chimes (C'man).
- 4875 S. AFRICA. SABC. 0405-0530 EE/AFkns, ads, M (Duke, Lovett, Schwartz).
- 4876.5 ECUADOR. Voz de Esmeraldas. Reactivated. Equipment test noted 4/7 around 0405-0505* with ID repeated often (also sub-slogan "Voz del Pueblo"), always mentioning "cinco mil wattios" (5 KW); US & LA pops (Callarman, Perdue, Hill). (In the interests of accuracy, it should be noted that the word "Esmeraldas" was slurred every time, thoroughly puzzling your editor, who even called up Al Niblack about it. But thanks to a certain hotSztot friend of mine, the mystery was solved. BH).
- 4877 S. VIET NAM. VTVN. 1434 VV, W reading nx or something (J. Davis).
- 4879.8 VENEZUELA. R. Universo. 0237-0337 Latin & US pops; adds "Musical" to slogan (Callarman). 0315-0335 LA mx, request pgm, IDs; VG (Tuchscherer 4880).
- 4881.2 DOM. REP. R. Comercial. 0500* with sub-slogan "Emisora con Sueña." TBS lists 0700* (Callarman). (T) 0933 net(?) nx, ads, TC Z-4, no def ID (McNeil 4882).
- 4884.4 COLOMBIA. Ondas del Meta. Latin pops, TCs 2 min slow; bad het (Callarman). (Time?)
- 4885.5 ANGOLA. Voz do Zaíre. *0525 OC, 0529 drums IS, anth "A Portuguesa," W with IDs; down from previously measured 4886.5 (Perdue 3/17). man).
- 4886.4 BRAZIL. R. Pioneira de Teresina. Lots of segued Braz mx to 0258:30*; QRM (Callarman).
- 4890 PAPAUA. NBC. 1038-1057 gospel tunes, mx interlude; 1100 six pips, 10 min of nx; then interview; 1130 complete ID (Callarman). 1130-1300 EE relig pgm, then opera; 1300 ABC nx and faded fast after G reception (Moritz, Troy). 4875. BH).
- 4890 SENEGAL. Rdfid du S. 0725 vernac talk; G-E (Salmaniw). (Assume you didn't mean S)
- 4890 VENEZUELA. Rdfid Venezuela. 0020 (Troy). (You know what I'm going to say. BH). 0957-1055 with TCs 1/2-hour fast, rock mx, info features (Callarman).
- 4892 N. VIET NAM. VoV. Home Svc (or to S. Viet Nam -- but if things continue as they are going, this will be Home Svc for the South too). In VV, with mx, W ancr (Sztot). (Tnx for the trenchant political analysis; now how about time, Mr. Severeid? BH).
- 4896 MOZAMBIQUE. RCM, Beira. *0400 IS, into vernac; wk (Young). 0400 FF(?), clarinet blues, talk mentioning Mozambique; RCM chimes, Af mx (Perdue). 0440 in Swahili, mentions of Nampula, etc.; F-G (Robins 3/20).
- 4900 BURUNDI. R. CORDAC. 0416-0428 relig hymns, FF talk; low mod (Salmaniw).
- 4900 ECUADOR. UnID. "Voz de ..." 0515-0601* Ec mx, SS, sev mentions of Quito. ID cud have been Voz de Macuma (R. Rio Amazonas, 4870) but don't think so. Not Libertador unless going by another name. G except for QRM which smeared IDs (Perdue).
- 4900 VENEZUELA. R. Juventud. 0205-0230 vocals, SS talks, choral & orch (Thompson). 0320 pops (Beatles, etc.); P (Duke).
- 4904.5 CHAD. RNT. 0037-0100 on 4/16 (after revolution); lots of military mx, occas ID in FF, lots of "vive la republique." Usual s/off in at 2300 (Rockwood).
- 4905 COLOMBIA. Em Atlántico. 0045 US pops, LA mx, SS talk, ID; G but het (Perdue).
- 4910 GUINEA. Voix de la Rev. 0555-0627 M in FF screaming to crowd, which responded... "Imperialisme, capitalisme"; G but low mod; dual 7252 (Salmaniw).
- 4910.5 ECUADOR. Em Gran Colombia. 0230 two M talk, ID (Perdue 4911M). 0415-0440 lots of ads, Argentine mx (so IDed); 0418 mention of Colombia's RCN, but def Ec (Callarman). 0412 ID during sports event (futbol?) (J. Davis).
- 4915 GHANA. GBC. 2245 EE nx (Troy). 2300-2305 relig pgm, choir; 444 (Schwartz).
- 4915 KASHMIR. Azad Kashmir R. 1200-1400 under China, then QSY 3380 (Willis).
- 4920 AUSTRALIA. ABC, Brisbane. 1100 EE nx (Jones, Schwartz). 1229-1245 pops, EE; 1245-1248 soft mx (Shingler).
- 4920 HONDURAS. R. Progreso. 0001 ID ancr 10 KW (presumably MW), Q&A pgm; 0213-0313 request pgm, Latin & US pops, lots of ads, sub-slogans "La Dimensión" and "Sonido '75" (Callarman). 0500* ID, no anth, just a "good night" (Salmaniw).

- 4920 UKRAINIAN SSR. Kiev. Kyiv (proper Ukrainian spelling) relay Moscow FS. 2059 into Czech/Slovak(?); P (Salmaniw).
- 4923.5 MOZAMBIQUE. RCM, LM. 0258 IS, *0300 pops ancts, EE ads (Young 4924). 0402-0450+ pops, EE TCs, ancts, IDs (Schwarz 4924, Perdue). EE, pops to 2130* on 3/23; 2200 EE, pops, IDs to 2230 wipeout by illegal CB on 4/5 (McNeil).
- 4924 UNID. Asian? 0920 W in nonstop lang talk, 0950 clas charal mx, 1000 five pips & anct, then either s/off or change beam (Perdue). (Prob Harbin dual 5950. BH).
- 4925 ASIATIC RSFSR. 1221 CC, IS; F (McCoy). (Sure you don't mean 4825? BH).
- 4929.7 ECUADOR. Rdif Casa de la Cultura Ecuatoriana. 0300 BBC SS nx/cmtry, 0315 slow US pop standards, 0330 slow-paced Ec mx to 0400; sev full IDs (Callarman). 0400 Ec mx, full ID after 4-note chime; 0417* (Sparks 4930).
- 4930 VENEZUELA. Voz de la Fé. 0345 mx pgm to 0400*; ID twice (Field).
- 4932 CHINA. UnID. 1424 story in CC about an oppressed proletarian who gets lost in a cave and is rescued by a chorus of 500 (J. Davis).
- 4932 JAVA. RRI, Surakarta. 1459 "Love Ambon," 1500 local ID in Indo; G (Sztot).
- 4932 NIGERIA. NBC, Benin City. 2126 EE talk, Af mx, ads, IDs; F with fades (McNeil).
- 4940 ASIATIC RSFSR. Yakutsk. M&W in GR, light piano mx; G (Sztot). (Time? BH).
- 4940 IVORY COAST. RTVI. 0100* after being on late with celebration, live, dancing, etc.; // 7215/11920; G (Mayer 3/31). 2202-2205 FF ID, nx; 2250 too (Schwartz).
- 4940 VENEZUELA. R. Yaracuy. Thru 0300 with "Fiesta Musical," then drama pgm seeming romanticized history of Portuguese province; 0345* on Sun. (Callarman).
- 4945 COLOMBIA. R. Colosal. 0320-0415 LA mx, ID, "Canción del Hombre Nuevo," TODELAR relig pgm for youth (Brunner, Duke, Lovett). Till 1055 with mx pgm "Amanecer Builente," on 3/20, broke in several times with bulletin on fatal auto accident; 1055 "Noticiera Colosal" nx, lots of ads; 1105 talk show past 1130 (Callarman).
- 4945 URUGUAY. Voz de Artigas. On for Easter, hrd around 0200 (Perlo via NU).
- 4950 VENEZUELA. R. Coro. 0030 LA mx, talk, ID; G (Perdue). Tropical mx, ads, "Coro Cordial." TCs 7 min fast "Ocho en punta" at 2352:50 per WWV. (Callarman).
- 4952 CHINA. Slinhot, Inner Mongolia. 1240 CC mx, M&W chants; above Sarawak (Sztot).
- 4955 COLOMBIA. R. Nac. (T) 0350 clas mx; G (Duke).
- 4958.8 VENEZUELA. R. Sucre. Variety of LA mx after Federación s/off (Callarman). (Time?)
- 4959.9 ECUADOR. R. Federación Sucúa. 0123-0143 variety of LA selections, then nx; 0200 relig pgm on Sun., during which xmtr was knocked off air 6 times (Callarman).
- 4960 CHINA. RP. 1236 JJ cmtry; F strngth but subject to CW QRM (Sztot).
- 4965 COLOMBIA. R. Santa Fé. 0100-0135 LA mx, many IDs, one song in FF (Troy, Brunner). 0343 SS mx, ID (Duke). All-night pgm "Buenos Aires Media Noche" with Argentine mx; only one ad noted in 0505-0605 time period; 0517 TC (Callarman).
- 4970 SABAH. R. Malaysia Sabah. In Malay nx, mainly about Pathet Lao; also local nct nx of Sabah; VG. May be hard to hear elsewhere but easy on WCNA (Sztot). (Time? BH).
- 4970 VENEZUELA. R. Rumbos. 0245-0409 LA vocals, piano, ads, nx, ID (Thompson, Duke, Lovett). 1000 bells, "Rumbos Informa." Good stn to learn YV ads from (Callarman).
- 4972 (L) CAMEROON. R. Yaoundé. 2210-2250 Af mx, lang talk, R&B groups; P (Perdue).
- 4972 FR. GUYANA. ORTF. 0116 piano, FF talk by W till 0132* with anth; YV QRM (Sal'iw).
- 4975 PERU. R. del Pacifico. 0345 piano, IDs, ads, Rumbos QRM (Lovett). 0417 singing promo ("Radio-del-Pa-CI-fi-co"); F with ute QRM (J. Davis).
- 4980 UNID. 1310 soft easygoing rhythm Islands mx, local ancts in vernac with distinct FF influence; obviously east of us in Sri Lanka (Goonetilleke via UADX).
- 4980 SWAZILAND. 0356 "Popcorn" IS, *0400 ID, morning show, rock, ads, TCs, all-EE (Miller, Lovett, Thompson, Schwartz, Duke).
- 4980 VENEZUELA. Ecos del Tropes. 0200-0329 LA mx, ID (Troy, Brunner, Duke). Early-AM pgm "Amanecer 780" with trop mx, ads; 1047 "Voz de Campesina" farm show; 1100 Rumbos-like nx called "El Mundo del Día." Not dual to Rumbos, tho (Callarman).
- 4990 VENEZUELA. R. Barquisimeto. 0225-0355 US pops after pgm before live audience, applause & laughter, jokes, etc. (Brunner, Thompson, Callarman).
- 4994 UNID. As early as 0440, ancts, mx, terribly wk mod; guess Angola (Young). (Only Angola I have listed near this freq is Ecclesia on 4985. BH).
- 4995 BRAZIL. R. Brasil Central. 0900 PP ancts; def not Andina (Willis).
- 4995 CANADA. CBC. 0700 EE pgm; vy loud. Presume feeder (Willis 3/16).
- 5005 UNID. 0334 strong but faded by 0402; seemingly Arctic, hvy QSB (Young 3/11).
- 5005 UNID. 1145 to 1215 or 1230, mostly talk in unID lang (Field). (Is Sarawak. BH).
- 5010 COLOMBIA. Em Cultural Surcolombiana. 0415 pops, ID (Duke). 0550 SS; back here after being on 5012 (Perdue 3/17). 0915-0930 SS rock & ID. How about SS version of "Plesse, Mister Postman?" (Moritz). 1031 LA mx, CARACOL anct (Jones).
- 5010 DOM. REP. R. Cristal. 0508-0515 SS, US pops; WWV QRM but G (Dorbert). Complete ID 0030; Colombian there too. HIMI reactivated (Mblack via NU).
- 5015 ASIATIC RSFSR. Vladivostok (assumed). 1304 RR nx; G (Salmaniw).
- 5015 EURO. RSFSR. Arkhangelsk. 0413 RR singing; faded by 0447. Other Arctic stns good this one day only (Young 3/9). (Vy nice, Jim BH).
- 5015 SOLOMON IS. SII&BS. 0832 EE or Pidgin under huge USSR sig, sev mentions of Honi-ara; hrd to 0840. Haven't seen this reported in USA before. X-3995 (Hill 4/15).
- 5015 GREENADA. R. Grenada. 2235-2350 EE; BBC nx, anct, ad for quick bank loan (NASWA members pse note!); always plagued by hets (Dorbert, Miller, Troy, Schwartz, Sal-maniw).
- 5016 RHODESIA. RBC. 0456 bell IS, *0500 EE nx (Young).
- 5021 NIGER. ORTN. *0530 vernac chants (Young). 0550 mx, FF to 0600 "Ici Niamey," then seemed nx tho not asked for such in WRTH; 0610 rhythm mx (Sztot).

- 5025 BRAZIL. Which one? Various eves around 0100; one eve at 0115 with drama. No ID
hrd (Field). (TBS: Rdif Aquidauana 5025, Voz do São Francisco 5027. BH).
- 5026 ECUADOR. R. Splendit. 0300-0459* mx pgms, ads, IDs, movie themes, ballads, echo
talk; big sig but P audio. Also 1130 (Field, Mayer, Tuchscherer, Earhart, McNeil,
5026 PERU. R. Quillabamba. (T) 0410 pops, echo SS; F (Duke). (Not ↑ ? BH). Sparks).
- 5030 VENEZUELA. R. Contiente. 0200-0425 tons of IDs, ads, mx (Moritz, Slaff, Lovett,
Duke). 2330 Latin mx (Troy).
son).
- 5032 SINGAPORE. RS. 1330-1400 EE nx reports, cmtry, orch clas mx, IDs; 333 (Thomp-
5038 CENTRAL AF. REP. RNC. 2230-2250 FF, monotonous string mx & chants; always G
(Troy, Miller, Salmaniw).
- 5039 SUDAN. R. Omdurman. 0415 AA chants; between RNC and Latin on 5040. Strong but
faded badly by 0425 (Young). (A good WCNA catch. BH).
- 5040 COLOMBIA. R. Cinco. Reactivated (see WRTH). 0110-0500 IDs for "R. Cinco" & CARA-
COL net; nx, mx (Tuchscherer, Field, McCoy). 1027-1045 "Your Station" & "La Emi-
sora del Llano"; 1050 bad het (McNeil, Jones).
- 5041.5 GUINEA-BISSAU. R. Bissau. 2250-2300* rhythm mx by small band, PP ancts, large
orch with trumpet playing (prob) anth, then anth(?) sung to s/off (Earhart 3/21).
- 5045 UNID. Heard sev days early March at 0420, drums 0501-0503* on 3/9 (Young).
- 5047 TOGO. Rdt. 0700 FF nx (presumed); G via long-path (Willis). 2200-2305 FF, light
mx; sounded like a local (Troy, Salmaniw, Schwartz).
- 5055 BRAZIL. R. Cultura de Cuiabá. Pop dance mx, 0530 full ID; strong (Sparks 3/25).
- 5057 ALBANIA. RTA Home Svc, Gjrokaster. 0455 odd mx (untuned violin?), *0500 time
beep, ID in Alb, nx, Slav mx, wakeup exercises; 0600 gone (McNeil, Young).
- 5059.5 ANGOLA. R. Clube do Huambo. 0457 bird IS, *0500 into PP nx, songs; P in RTTY QRM
(Young, McNeil 5060).
- 5060- ECUADOR. R. Nac. Progreso. 0410-0514* IDs, Andean and Andean-influence mx; F-G
5065V with slight het (Robins, McCoy, Sparks, Young).
- 5060 YEMEN. DYBS, Aden. 0421 mx, chants; faded by 0447 (Young 3/11).
- 5065 KARELO-FINNISH ASSR. Petrozavodsk. 0401 RR pgms, ancts, mx; extremely strong but
faded at 0446. Dual 5910 (Young 3/9). 1305 RR nx; F (Salmaniw).
- 5075 COLOMBIA. R. Sutatenza. 0150-0200* mx, ID, anth by small band at s/off; reported
because WRTH shows 0400*. This was a Sun. (Earhart). 0228 clas mx, ID (Duke).
- 5109 CLANDESTINE. V. of the Burmese People. 1307 Oriental mx, BB talk; P (Salmaniw).
- 5145 CHINA. RP. 1309 RR talk; G level but P modulation (Salmaniw).
- 5170 CHINA. PLA. 1045 CC mx, W talk; G dual 4380 (P), 4330 (G), 5240 (F) (Salmaniw).
- 5240 CHINA. (See above item.) (Salmaniw).
- 5550H N. KOREA. Hamhung. 2nd harm (2 x 2775) noted 1432 with KK talk; P. Several 2-MHz
North Koreans can be heard on their 2nd harm in this range (Hill 4/3).
- 5860 CHINA. RP. 1245 CC ancts by W, then CC opera; P-F (Robins).

This being Dan Ferguson's final issue of Frendx before Messrs. Leonhardt and Mayer take over full editorial and production chores, your LR-A editor wants to take this opportunity to thank Dan for his herculean efforts over the past ... what has it been, seven years or so? Wonder how many members fully appreciate the near-slavery you've been trapped in for our benefit, DF.

Good luck, Dan -- enjoy your "retirement," but send in reports now and then. And best wishes to Mac and Alan as they try to fill some mighty big shoes.

I'll be visiting the Washington, DC, area around July 4-6; hope to see many of you at Dan Henderson's or wherever we end up meeting. 73 and good listening to one and all ...

Bob

Thanks, Bob. I've been editing and/or getting FRENDX published since about 1968 with the exception of a period of a few months when I moved from Florida to W.Va. Will be nice to read FRENDX each month when it arrives in the mail! Will also try to get some reports to you & other editors....Maybe even another trip or two to mountain tops for some DXing....Dan Ferguson

LOG REPORT SECTION B

NEW EDITOR:

LOG REPORT SECTION B

This month LR Section B was again edited by Mac Leonhardt. Future editor for this section (beginning immediately) is:

LOG REPORT SECTION B

LARRY YAMRON
540 NORTH NEVILLE
PITTSBURGH, PA 15213

5900 - 11599 kHz

- 5900 ISRAEL IBA; 2215-2220 FF, YL and OM in interview (Earhart)
5905nf CANADA RCI; 0710 EE, sports, ex 5925 (Willis-Austl)
5930 KARELO-FINNISH REP. Murmansk; 0407-0439 f/o, noted under Prague //5065 (Young)
5930 CZECHOSLOVAKIA R. Prague; 0145-0200* EE, request mx px (Brunner)
5935 LATVIAN SSR R. Riga; 2124-2200* Latvian, Swedish, orchestra mx (M. Smith)
5943 ECUADOR HCJB; 0358* EE, spur found here again 3/14 5 S units down from //5970, upon Stubbe's request, as he tries to lick it; also 5996 het; 5943 went off abruptly at 0358:15, presumably when 6050 xmtr closed (Hauser) / (Duke)
5950 COLOMBIA R. Super de Medellin; 1054 SS, LA mx (Jones); 0403 pop mx, ID
5950 USSR R. Moscow; 0450-0459 EE px into RR px 0500 w/ ID (Patterson)
5955 HOLLAND RN, Lopik; 0802 DD to Eur (Padula-Austl)
5955 FRANCE RFI; 2125 FF, variety show, NF this time period (Padula-Austl)
5960nf MOROCCO RTVM; 2350 AA singing, applause, sudden wipe out w/CBC s/on (Jones); 2315-0000 AA mx, chants //6170, 6190. Maybe new xmtr site (Behr); 0045-0102 f/o, unusual to find Morocco strong enough to fend off RCI(Earhart)
5960 FRANCE RFI; 0700-0800 Noted here in FF, ex 5955 (Padula-Austl)
5960 USSR(Asian?); 1020-1046 YL in CC(?) talk, short mx, OM's in JJ(?) (Earhart)
5965 BRAZIL R. Guaiaba; 0900 PP, anmts (Willis-Austl); 2310 PP, classical mx(Z'mer)
5970t PERU R. El Sol; 1045-1058 SS, Andean type mx, no ID due to QRM (Earhart)
5970 DOMINICAN REP RTV Dominicana; 1025 SS, nx (Zilmer); 1050 ID and very good level (Willis-Austl)
5980 USA KGEI; 0946 RR px(Salmaniw); 1000 EE rel px (McNeil, Sharp)
5980 SABAH RM, Kota Kinabalu; EE ID, 1410 when KGEI not on (Willis-Austl)
5980 SOUTH AFRICA Radio RSA; *0300-0335 EE, nx, cmntry (Thompson, Jones)
5980 GREENLAND Gronlands Radio; 2315 talks in lcl lang //9575. Good (Behr)
5985nf W. GERMANY DW; 2300-2320 GG to SoAsia, ex 6010 (Padula-Austl)
5980 SIERRA LEONE SLBS; 0800 TC in EE into Afr rhythms (Padula-Austl); 2200-2342* EE, nx by YL, ID into FF nx. New xmtr not sked on this freq at this time (Mayer, Zilmer) / (Miller, Jones)
5990 RUMANIA R. Bucharest; *0129; 0223 EE, YL w/nx, "Listener's Club" px
5990 GUATEMALA R. Cultural; 0430 EE ID into SS mx px (Lausevich)
5990 BRAZIL R. Ministerio da Educacao; 2315 PP, Network classical mx (Zilmer)
5990nf FRANCE RFI; 0700-0800 FF, ex 5960, 5955 (Padula-Austl); //6045 (Willis)
5995 AUSTRALIA RA; 1225-1240 EE, ID, pop mx (Earhart, Salmaniw)
5995 VATICAN Vatican Radio; 0000-0130 noted regularly w/ref px SS, EE, and FF (Cress, Sharp)
5995 UNID. Regularly in Mar and early April, all FF anmts, usually by YL w/s oft low voice, unable to catch ID, but OM heard to say "Radio Televisione Francaise!" signal usually good from Vatican s/off 0130 until VoA carrier on 0225 to 0250. Px is wide range mx w/US jazz, US folk mx. Who? (Cress)
6000 HUNGARY R. Budapest; 0308; 0420 EE, nx, cmntry (Meehan, Jones, Lausevich)
6005 CANADA CFCX, Montreal; 2027-0005 EE, sports, pop mx, ID's ads (Slaff, Brunner, Duke, Krause, Sharp)
6005 AUSTRALIA RA, Lyndhurst; 1305-1330 EE to SoPacific (Robins, Thompson)
6005 BOLIVIA R. Progreso; 0125 SS, two clear ID's, though tough to copy down in the mud w/het QRM TIHE (Hill)
6006 COSTA RICA R. Reloj; 0752-0857 SS, lcl mx, ID's (McNeil, Dorbert)
6010 VENEZUELA R. Los Andes; 1050 SS, talks, mx, ads (Zilmer, Jones)
6010nf FRANCE RFI; 1700 new GG Svc (Willis-Austl)
6010 W. GERMANY DW; 0120 EE talk on conferences (Moritz); // 6040 (Krause)
6015 BRAZIL R. Clube de Pernambuco; 2325 PP, network classical mx (Zilmer)
6025 NIGERIA NBC, Enugu; 2300-2304*EE, rel px, hymns (Tuchscherer, Mayer)

- 6025 KUWAIT R. Kuwait; 0505-0516 AA, mx, chants (Duke, McCoy)
- 6025 MALTA DW; 0500-0550* AA to NoAfr w/mx, talks (Pađula-Austl, Behr)
- 6025 NETH ANTILLES RN, Bonaire; 0135-0150 SS, nx, orch mx (Thompson)
- 6025 PORTUGAL R. Portugal; 0205-0300 EE, cmntry, military mx (Brunner, Moritz)
- 6025 PARAGUAY R. Nacional; 2336-2345 SS, OM w/lcl nx (Mayer)
- 6030 PHILIPPINES FEBC; 1220-1238 EE, "Back to the Bible" px, ID (Jones)
- 6040 W.GERMANY DW; 0145-0205 EE, talks, orch mx (Thompson, Lovett)
- 6045 JAVA RRI, Jakarta; 2300 "Love Ambon" theme, into Indonesian px (Pađula)
- 6055 JAPAN NBC; 1410 JJ px, w/mx (Salmaniw)
- 6060 ARGENTINA R. Nacional; 0928 SS, end of nx, ID (Jones, Mayer)
- 6060 CUBA R. Habana; 0530 noted in SS, seems NF (Pađula-Austl)
- 6060 SICILY RAI, Caltanisetta; 0740 II talk and dance mx, via long path (Pađula-Aus); 2320 I/i, "Nocturn" px, FF ID 2330, nx by YL, GG nx 2333 by OM (Robins)
- 6065 COLOMBIA R. Super; 0615 SS, mx, lots of ID's (Meehan); 0440 (McNeil)
- 6065 ECUADOR HCJB; 0830 RR (Willis-Austl); 1135 EE "Hello DXers" (Zilmer)
- 6065 SPAIN RNE; 0100-0130 EE, ID, nx, SS vocal mx (Thompson)
- 6070 CANADA CFRX, Toronto; 1600 EE, "Moments of Meditation" (Duke, Moritz); 0923 SW ID and freq, w/ (Jones); 1820 EE, pops, ads (Brunner)
- 6070 PAKISTAN R. Pakistan; 1300 EE nx over Jayapura (Willis-Austl)
- 6070 VENEZUELA R. San Sebastian; 1050 SS talks, mx (Zilmer); 0130; 0245 SS, LA mx, talks (Dorbert, Lovett)
- 6072 SWAZILAND TWR; 0359 EE ID into GG rel px (Robins, McCoy, Talbot)
- 6080 KIRGHIZ SSR, Frunze; *1500 RM IS into EE for SEA, nx //12030 (Young)
- 6080 ENGLAND BBC, Woolferton; *2315 suddenly w/EE ID by OM into Swahili px by OM (Robins)
- 6085 COLOMBIA Ondas del Darien; 1045 SS, lcl mx (Zilmer)
- 6085 W.GERMANY Munich (Bayerischer RF); 2115 GG nx by YL into classical mx concert to 2130 (Pađula-Austl)
- 6085 ESTONIAN SSR R. Tallinn; 2130 ID in Estonian. Poor. (M. Smith) / (Pađula-Au)
- 6085 USSR R. Moscow; 2100-2128 EE to UK. ITU list both Tallinn and Tbilisi here
- 6090 LUXEMBOURG R. Luxembourg; 0000 EE, US rock mx (Slaff, Krause)
- 6090 AUSTRALIA VL16 Sydney; 0908 EE nx (Jones)
- 6095 SPANISH SAHARA R. Sahara; 2200-0000* Quite regular since first logged 3/17 w/AA talks and mx. IS is an excerpt from "Espana" by Chabrier (identical, I believe, to IS used by RNE, Madrid). On 3/17 ID was by OM in SS at 2300 followed by "Viva Espana" and s/off 30 sec later. On later loggings px has been AA until 2300 when they apparently relay RNE w/nx and other material in SS, sometimes until 0000 (Cress); 2355 SS, NA at 0000 s/off (A. Miller); 2200 AA, vocal and instrumental mx (Tuchscherer); Is 100 kw xmtr, per QSL received 11805 also 100 kw (Behr) Note to Ken Earhart - This must be your "Iraq (t) MRL
- 6095 PERU R. Nacional; 0115-0220 SS, talks, ID's (Moritz, Tuchscherer); 0436 SS, "R. Nacional" ID (Meehan)
- 6095 COLOMBIA Voz del Centro; 0535 SS, ID's, mx, ads (Meehan)
- 6100 MALTA DW; *2130(ex 2215) PP to Brazil. This xmtr previously used by RCI until 3/6 (Pađula-Austl); 2235 PP ID (Earhart)
- 6100 YUGOSLAVIA R. Belgrade; 2203-2210 EE nx (Dorbert)
- 6100 VENEZUELA Observatorio Cagigal; 0832 Time signals (Salmaniw); 0555 TC's beeps, no nrmts, heavy QRM Canada (Dorbert)
- 6110 ENGLAND BBC; 0200 SS ID and nx (Jones); 0540 now here w/FF to Afr, additional freq; into Hausa 0545 (Pađula-Austl)
- 6115 COLOMBIA LV del Llano; 0136; 0255 SS, mx, ID (Jones, Lausevich)
- 6115 PAKISTAN R. Pakistan; Now on at 1530, not 1600 in Urdu type lang (Willis-Au)
- 6115 MEXICO XEUDS; 1630-1700 SS, classical mx (Thompson)
- 6118.2 NICARAGUA R. Atlantico, Bluefields; 1227-1339, not reported in SPEEDX or NASWA LR since Zilmer 10/72. Noted here 3/29 with Ray-o-Vac and Leche de Magnesia Phillips ads; ID as "La fablosa Radio Atlantico" 6:49 TC indicates this part or all of Nicaragua is on CST now (Hauser)
- 6120 VENEZUELA R. Angostura; 1040 SS talks, lcl mx (Zilmer) / (Meehan)
- 6120 SWITZERLAND SBC; 0200-0215 EE, Palm Sunday mx (Brunner); 0245 GG px
- 6125 COLOMBIA R. Continental; 0300 SS, pop mx (Lausevich)
- 6130 CANADA CHNX, Halifax; 1225; 1845 Easter mx, ads, pop mx (Brunner, Miller)
- 6130 GHANA R. Ghana; 0730 EE ID (Willis-Austl); 2200 EE, rel px (Zilmer)
- 6130 Cf. March LR - Unid AA station at 1905 is Riyadh as reported Jan LR (Behr)
- 6135 POLAND Polish Radio; 2300 IS noted under R. Peking IS (Zilmer)
- 6135 BRAZIL RTV Gaucha; 0830 PP ID (Willis-Austl); 0955 PP, ID, ads (Jones); 2330 PP, talks, ID (Zilmer)

- 6135 CHILE R. Universidad de Concepcion; #1100 IS, SS ID, mx (Zilmer); 0100-0132 f/o SS talks, light mx (Tuchscherer)
- 6135 KAZAKH SSR R. Tashkent via Alma Ata; 1230 in Uighur (Willis-Austl)
- 6140 COLOMBIA R. El Sol; 0125 SS, nx (Lausevich)
- 6140 CYPRUS BBC, Limassol; 0011 EE, BBC "World Service" to SEA (Mayer)
- 6140 AUSTRALIA VL6, Perth; 1000 EE, Ici ID, nx (Jones)
- 6145 FINLAND R. Finland; 0730-0800* EE, experimental txmsn noted Mar 17, requesting reports (Padula-Austl)
- 6150 COLOMBIA LV de Huila; 0733 SS, ID, TC (Willis-Austl)
- 6150 COSTA RICA R. Atena; 1128 SS, talks, mx (Zilmer)
- 6155 JAPAN FEN; 0907 EE, ID, nx (Jones)
- 6155 AUSTRIA ORF; 0130-0155; 0333 EE, nx, cmntry, ID's (McNeil, Krause)
- 6160 CANADA CKZN, St John's; 1614 EE, consumer px, pop mx (McNeil)
- 6163 CYPRUS R. Bayrak; Nominal 6150 found here by BBCMS per World R. Club (Hauser); Reported here by BBC, 1400-2100 TT px (BBC via Behr)
- 6165 VATICAN Vatican Radio; 0100 EE, rel cmntry (Jones)
- 6165 SWEDEN R. Sweden; 0035 EE, "Sweden Calling DXers" (McNeil)
- 6165nf ECUADOR HCJB; 0450 RR, Eur Svc, ex 6095 (Padula-Austl)
- 6170 VENEZUELA R. Nacional; #1059 SS, ancd YVKO call, piano mx (Jones)
- 6175nf GREECE Athens; 0545-0600* TT to Turkey, ex 6075 (Padula-Austl)
- 6175 COSTA RICA TIFC; 1145 SS, rel px (Jones)
- 6175 BRAZIL R. Guarani; 0808 PP, talks, mx, many mentions Belo Horizonte (Jones)
- 6175 CANADA BBC via Sackville; #1100 EE, RM IS underneath (Jones); 1125 EE, "Run Rabbit, Run" drama, unlisted freq (Earhart)
- 6180 GUATEMALA R. Nacional; 0435 SS IS, TC then into FF drama (Tuchscherer)
- 6180 VENEZUELA R. Turismo; 1005 SS, ID, TC, LA mx (Jones)
- 6190 VATICAN Vatican Radio; 0720 multi-lingual pxs for tourists and pilgrims for 1975 Holy Year. New service (Padula-Austl)
- 6195 SWEDEN R. Sweden; 0029 IS, EE "Panorama" px (McCoy, Earhart)
- 6195 NIGERIA NBC, sokoto; 0535 Afr chants, EE ID 0559 (McNeil)
- 6210 CHINA R. Peking; 1219 Mongolian HS presumed as sked (Hauser); #1200-1255* believed Mongolian //4895 (Willis-Austl)
- 6590 CHINA R. Peking; 1230-1300 CC, talk, orch and vocal mx (Thompson)
- 6809.5 N. VIETNAM Viet Bac; 1400* now here, ex 6795, but drifts all the time (Willis)
- 6870t KAZAKH SSR Alma Ata; 0100 OM&YL in RR(?) w/nx(?) (Miller)
- 6980 CLANDESTINE R. Cuba Libre; 0340-0400 SS, lolitical talk mentioning Castro, anthem, marching music (Mayer)
- 7015 CLANDESTINE Vo United Front of Cambodia; 1140-1150 YL&OM in Khmer talks (Mayer)
- 7076v CLANDESTINE R. Cuba Libre; 0203 SS. This is an anti-Castro, anti-Soviet station. Heard occasional evenings on various freqs, such as 7076, 7085, 7072.3, 7073.2, etc. Programming is very erratic and irregular, consisting of short segments, then signing off, then on again a few minutes later (Salmaniw)
- 7085t PAKISTAN Karachi; 2110-2120 EE, muffled, OM's talking but couldn't copy (Earhart)
- 7105nf INDIA AIR; 1315* CC, beware Thai TV //9625 (Willis-Austl)
- 7105 MONACO TWR; 0712 carrier on, IS 0722, EE s/on 0725 (Salmaniw)
- 7110 JAVA RRI, Yogyakarta; 1132 EE, nx (Jones); 1259 Indonesian talks, ID (McCoy)
- 7135 MONACO R. Monte Carlo; 0509-0521 FF nx, ID as "Ici Monte Carlo" (P' son)
- 7135 TADZHIK SSR R. Moscow via Duchanbe; 0200-0430 SS to CA. Another RM xmtr (Simferopol) operates same freq prior 0200 w/SS to SoAmer (Legge)
- 7135 RSFSR Vladivostok; #1430-1700* VV px, usually fair to good (B. Davis)
- 7139 MOLUCCUS RRI, Ambon; 0844 ID, Indonesian px w/rnx (Young)
- 7140 CYPRUS BBC Limassol; #0630-0640 EE, nx (Dorbert)
- 7140 USSR R. Moscow; 0300-0320 EE, nx, cmntry, ID (Patterson)
- 7150 ALBANIA R. Peking via Tirana; 0324-0336 EE, nx, mx from "The Red Flag Canal" with chorus (Patterson)
- 7150nf SAUDI ARABIA Riyadh; 2230-2300* now here w/AA px //7110 (Padula-Austl)
- 7155 USSR R. P. & P; 0410-0414 SS, "Habla Radioemisora Paz y Progreso" ID (Patterson)
- 7162 IRANIAN JAYA RRI, Jayapura; 0835 Indonesian mx, ID //6070 (Young, Willis)
- 7170 NEW CALEDONIA R. Noumea; 1050-1103* FF, closing amnts, NA at s/off (Earhart, McCoy, Legge, Jones)
- 7170 RSFSR Novosibirsk; 1100-1300 relaying R. Moscow E Asian langs (Legge)
- 7170 USSR R. Moscow; 0443-0453 EE and Latvian song, women's day cmntry, home news (Patterson)

- 7170 GREECE VoA Kavalalisted; 2150-2155 EE, talk on Girl Scouts (Shingler)
 7175 USSR R. Moscow; 0700 EE, nx //7260. Far East sites (Hauser)
 7180 MALAYSIA BBC Tebrau; 1055-1108 Indonesian talk into JJ at 1100 (Earhart)
 7185 RSFSR Khabarovsk; *1730-1830 f/o CC Svc w/RM and R. P. & P. (B. Davis)
 7185 RSFSR Blagovetchchen; 1100-1200 Mongolian; 1200-1230 RR, relay of R. Moscow (Legge)
 7185 USSR R. Moscow; 0113-0131 EE, "Spotlight on Sports" (Patterson)
 7190 YEMEN (PDR) DYBS; 0337, AA talks, mx, QRM VoA Tangier (Sairmaniw)
 7190 SRI LANKA SLBC, Colombo; 0130-0150 f/o, weird subcontinental vocals mixing w/ham SSB QRM and others //11800, listed as all Asia service in Hindi (Hill)
- 7195nf AUSTRIA ORF; 0515 GG to Eur w/classical mx, ex 7205 (Padula-Austi)
 7195 LIBERIA VoA, Monrovia; 0320-0335 EE, "African Safari" px (Thompson)
 7200 RSFSR Vladivostok; *0930-1630*; *1730-2230* RR Mayak HS (B. Davis)
 7205 USSR R. Moscow; 0440-0501 EE, regional songs (Patterson)
 7205 KIRGHIZ SSR Frunze; *1230-1330 SEA langs; 1330-1400 FF, R. P. & P (Legge)
 7206.5 UNID, 1130-1200 CC station here w/CC anmts, accordion mx. Suspect Red Army Radio or suchlike (Willis-Austi)
 7210 SWITZERLAND R. Red Cross; 2328 SS; 2338 GG talk; heard 3/17 only (Behr)
 7215 UNID, *1600-1650*; *1700-1750* VV, starts and closes both broadcasts with a recording of a steam train. Carrier stays on 1650 to 1700, goes off after 1750 program. Who? (B. Davis)
 7215 ANGOLA R. Ecclesia; 0005-0030 PP anmts, mx, ID's (Behr); 0345 PP, US pops, not per WRTH sked (Mayer)
 7220 USSR R. Moscow; EE, cmntry, RR vocals, ID (Patterson) Time? - MRL
 7220 AUSTRALIA RA; 1122 EE, cmntry on SoAfr, mx (Earhart)
 7220 HUNGARY R. Budapest; *2030 GG, opening anmts, nx (Staff)
 7225 PHILIPPINES FEBA; 1330-1405 CC, rei talk, vocals, marimba mx (Thompson); 2250 VV, rei px (Padula-Austi) / (B. Davis)
 7230 RSFSR (Site unknown); 1130*; 0500-0600 RR Mayak HS, much ARO QRM
 7235 AUSTRALIA RA; 1106-1115 EE, nx including Pres. Ford's press conference (Patterson); *1130 Matilda IS into px in lang (Jones)
 7245 MAURITANIA Nouakchott; *0800 Sundays in Vernaculars (Willis-Aust l)
 7250 USSR R. Moscow; 0217-0231 SS, nx, cmntry, ID (Patterson)
 7265 ENGLAND RCI; 0325-0345 RR, nx, ID followed by BBC s/on w/RR px after EE anmt (Patterson)
- 7265 PAKISTAN(?) Karachi(?); 1120 w/a-cappella chanting by OM then YL past 1130 with flute type mx, no anmts. Channel listed both Karachi and Azad Kashmir in WRTH but neither scheduled this time period (Hill)
- 7275 NIGERIA VoN; 0708-0735* EE, "This Week in Africa" px (Dorbert)
 7280 RSFSR Komsomolsk; 0900-1030 relaying RM JJ px //5960 Vladivostok (Legge)
 7300 ALBANIA R. Tirana; 0445 EE, political talk (Meehan)
 7320 USSR R. Vilnius; 0030 EE to NoAmer (Sharp)
 Editor's Note: Ernie Behr says that R. Vilnius should be listed as USSR not LITHUANIAN SSR as it usually appears in LR. They use various sites, but never from Lithuania.
- 7340 RSFSR (Site Unknown); *0830-0935 plus, relaying RM CC Svc (B. Davis)
 7345 CZECHOSLOVAKIA R. Prague; 0115-0155 EE, talks, DX px (Patterson, L'vich)
 7355 USSR R. Moscow; 0156-0210 EE, nx, sports talk, ID (Patterson); *1130-1200 SEA lang px; 1200-1230 RR (Legge)
 7360 USSR R. P. & P.; 0353-0400 SS, ID, cmntry (Duke, Meehan)
 7435nf USSR R. Moscow; 1330-1500 RR HS (Willis-Austi)
- 7489.5nf CLANDESTINE Liberation Radio; 1230 EE, ex 7470 (Willis-Austi)
 7500 AUSTRALIA VNG time station; 1059:40 EE, announcing station as in Victoria and giving freqs 4500, 7500, and 12000 (Earhart)
- 8565 CHINA R. Peking; 1300 Mongolian //6620 (Willis-Austi)
 8746.5 CHINA Peihai, Kwangsi; 1206 YL in CC. Down from 8759v //4915 (Hill)
 9009 ISRAEL IBA; 2000 EE nx (Zilmer); 0500 EE to NoAmer (Sharp)
 9022 IRAN R. Iran; 0218 OM&YL in lang talks, AA mx, chants (Duke)
 9180 CHINA R. Peking; *1340-1344* w/Internationale, CC anmts (Willis-Austi)
 9340 N. KOREA R. Pyongyang; *0800-0850* KK //11535; *1000-1050* EE; *1100-1150* JJ; *2200-2250* KK //12075 (B. Davis)
 9360 SPAIN RNE; 0125-0140 SS, mx, ID's (Brunner, Duke)
 9365 CHINA R. Peking; 1100-1130 CC, external svc //7620 (Willis-Austi)
 9370 N. KOREA R. Pyongyang; 1230 EE, cmntry (Zilmer)

- 9475 EGYPT R. Cairo; *0200-0211 EE, talk on sports in Egypt (Brunner)
- 9495 ISRAEL IBA; 2300-2306* Hebrew, Kissinger talk in EE (Zilmer)
- 9505 DOMINICAN REPUBLIC RTV Dominicana; 2145-2200 EE, tourism promotion talks (Hersh, Moritz, Zilmer); 2200 SS, LA mx, ID's (Dorbert)
- 9505nf FRANCE RFI; 2030 FF, first noted 3/16 (Padula-Austi); 1740 EE, "You asked for it" px (Zilmer)
- 9505 PERU R. America; 0335 SS, mx, bank and restaurant ads (McCoy)
- 9510 USA BBC via Greenville; *2300-0330* EE into WS VoA ID at s/off // 9580 is now Ascension (Padula-Austi, Behr)
- 9510 Cf. March LR - DW at 1715 is via Germany, not Rwanda //11850 (Behr)
- 9515 TURKEY VoT; *2200-0100 EE, nx, mx, DX px (Chaitin, Zilmer, McCoy, Legge, McNeil); 0420-0501 AA mx, chants (Duke)
- 9520 Cf. March LR - Report of R. El Morro is wrong, inactive 6 years. Only R. La Cronica noted here after 0530 (Behr)
- 9525 LEBANON R. Lebanon; 0228-0251 EE, nx, mx, oil talks (Slaff, McCoy, M. Smith, Krause, Earhart)
- 9525 UNID, Jammer from 0400 nightly w/instrumental mx and jammer noise, very strong, seems //11850; no sign of station being jammed, but may be intended for Voice of The Arabian Peninsula from Baghdad (Behr) / (Hauser)
- 9530 AUSTRALIA RA; 2235 EE, pop mx to 2245* via long path via Madagascar
- 9532 PERU R. Nacional Tacna; 0325 SS, ID, LA vocals (Robins); 0519 ID's (Salmaniw)
- 9540 UZBEK SSR; R. Tashkent; 1200-1229 EE, OM w/nx, cmntry into Urdu 1230 (Earhart, A. Miller, McNeil, McCoy)
- 9540 RSFSR (Unknown site); *2100-2130* KK svc, usually weak; *0800-1030* RM JJ svc (0800-1030 believed to be Khabarovsk) (B. Davis)
- 9540 POLAND R. Warsaw; 1606-1640 EE, nx and talks (Moritz)
- 9545 GHANA R. Ghana; 2104-2120 EE, talk on churches in Ghana, Afr mx (Moritz)
- 9550 CHILE VoChile; 0138-0144 EE, asking for reports to P. O. Box 244H, Santiago (Jones)
- 9555nf KUWAIT R. Kuwait; 1637 w/subcontinental vocals, Urdu type talk by YL, EE ID 1700 mentioned //11940, ex 9715 (Willis-Austi)
- 9562 PERU R. Nacional, Lima; 0329 SS ID by YL (Robins)
- 9566 CHILE LV de Chile; 0145 EE, YL w/cmnty on Civil Rights in Chile (Mayer)
- 9569 QATAR, Doha; 2130 noted w/AA after Madrid goes off 2130 (Legge)
- 9570 AUSTRALIA RA; 1015 EE, "Australian Hit Parade" px (Meehen)
- 9572 CHILE R. Diego Portales; 0105 SS, nx, ID's, heavy QRM HCJB & RB (Lovett)
- 9575 RUMANIA R. Rucharest; *0129 EE px (Lovett)
- 9575 ITALY RAI; 0105-0120* EE, talk on sports, nx, mx (Brunner, Krause)
- 9580v NICARAGUA R. Mar; 1342-1400 f/o, bright mx, many ID's "Emisora Atlantico, YNRP Radio Mar en 9, 580 kcs" (Robins)
- 9580 TADZHIK SSR Duchanbe; 1200-1300 relaying RM SEA langs (Legge)
- 9584 CLANDESTINE Bizim Radio; 0600-0650* TT px (Willis-Austi)
- 9585nf FRANCE RFI; 2040-2100 FF //9505, 9605, ex 9630 (Padula-Austi)
- 9590 CHILE R. Presidente Balmaceda; 0000-0100 SS, mx, ads "Balmaceda Suya" ID (McCoy, Zilmer, Jones, Behr, Tuchscherer); 0200-0400 SS (Legge)
- 9590 SWITZERLAND SBC; 2100 EE, features (Sharp); 2205 uninterrupted local mx (Tuchscherer) / Tuchscherer)
- 9595 BRAZIL R. Cultura da Bahia; 2325-0100 PP, LA and US pops (McCoy, Zilmer, 9600
- 9600 UZBEK SSR R. Tashkent; 1225 ending EE px, IS 1230 into lang px (Earhart)
- 9605nf FRANCE RFI; 0600-0700 FF (Willis-Austi); 2000-2200* FF, talks, light and pop mx //9585 (Zilmer, Tuchscherer)
- 9605 VATICAN Vatican Radio; 0100-0115 EE, rel px (Brunner) / Talbot)
- 9610 AUSTRALIA VLW9, Perth; 1243; 1400 EE, mx, birthday greetings (McNeil, 9615
- 9615 MOROCCO RTM; 2115 AA talk by OM (Tuchscherer); 1945 AA mx, anmts (Robins) / Moritz)
- 9620 YUGOSLAVIA R. Belgrade; 2200-2215 EE, talks, ID into FF 2215 (McNeil, 9620nf
- 9620nf SAUDI ARABIA Riyadh; 1415 AA, nx and ID; sked 0900-1600 on this freq. Do not confuse with Abu Dhabi which is no longer here - see 9690 (Behr)
- 9620nf ENGLAND BBC; 0245-0300 NF for RR (Padula-Austi)
- 9635 BRAZIL R. Aparecida; 2300 PP, talks, mx (Zilmer)
- 9635 SINGAPORE R. Singapore; 2305-2330 CC Svc (Padula-Austi)
- 9640 S. KOREA R. Korea; 1430 EE nx (Zilmer)
- 9645 BRAZIL R. Bandeirantes; 2300 PP, talks, mx, ads (Zilmer)
- 9645 COSTA RICA TIFC; 1225-1300 SS, rel mx, ID (Robins, A. Miller); 0219 SS, math lesson (McCoy)

- 9647 UNID, 1142 OM in Thai or Burmese, oriental type vocal, 1146 suddenly cut off. Not Bangkok 9645. Perhaps Lhasa, listed for 9652v? If so should have been //8566 (Peking), but was not (Hill)
- 9652 GUINEA REP Rdiff Nationale; 1953 FF ID (Salmaniw)
- 9655 Cf. March LR - Unid at 2005 is Budapest; also heard 2130 EE (Behr)
- 9665 RSFSR Tchita; 1100-1130 relaying R.P.&P. CC //9685 (Legge)
- 9670 PORTUGAL IBRA; 2030-2059 EE, rel px (Krause); 2100 IS, Croatian (Slamaniw)
- 9670 JAPAN NHK; 1610 Swahili nx. Poor (Mayer)
- 9675 UNID, 1615 AA, nx mentioning Arabs, etc. Lebanon (?) (Mayer)
- 9675 PERU R, Del Pacifico; 1201 SS, YL w/singing ID, TC then rel px (Jones)
- 9675t BRAZIL R, Diario da Manha; 0225-0233* PP, OM mentioning Sao Paulo, mx no ID recognized (Earhart) / (Earhart)
- 9680 CUBA R, Habana; 1255-1305 SS, political speech. New time for this freq
- 9685 RSFSR Irkutsk; 1100-1130 relaying R.P.&P CC; 1130-1200 R. Moscow CC (Legge)
- 9685 CANADA; Though appearing in current schedules, RCI has dropped or has never used this frequency from Sackville for 2005-2159 Eur Svc (Hauser)
- 9690nf U.A.E. (Tent); possibly Abu Dhabi 1930 AA and Persian mx, 1956 AA talk or nx, short anthem to 2000*, heard often since 3/22, clear signal; mx also includes SoAsian type songs (Behr)
- 9690 ARGENTINA RAE; 0305-0320 EE, nx and features (Moritz)
- 9690 RUMANIA R, Bucharest; 1300 EE, nx (Zilmer)
- 9694v ALGERIA RTVA; 1900 "Voice of Palestine" AA px here 3/22 in QRM; drifts up and down 9680-85, their het sounds like a siren (Behr)
- 9700 BULGARIA R, Sofia; 1940 ending EE nx to West Europe (Robins); 2129-2145 EE, cmntry on Bulgarian architecture, mx (Hersh, Krause)
- 9700 RWANDA DW, Kigali; *2200 opening relay of GG px over Sofia, but the local Kagali ID was given only in FF for some strange reason at 2200. Perhaps a Rwandaise regulation (Hauser)
- 9705 BRAZIL R, Maua; 2200 PP talks (Zilmer)
- 9705t ALGERIA RTVA; 1150-1205 f/o AA mx, anmts by OM, too weak to tell lang, but intonation was like AA, might be Kabyl Network but s/on listed 1200. Any ideas? (Robins) / (Dorbert)
- 9705 MEXICO XEMRX, Radio Mexico; 0130-0200 SS, LA mx, talks (Thompson)
- 9705 INDIA AIR; 1230, Lang, choral group singing oriental songs (A. Miller)
- 9710 KIRGHIZ SSR Frunze; 1900-2100 SS/PP relaying Radio Moscow; 2100-2130 FF; 2200-2300 PP, RAI QRM (Legge)
- 9715 SWEDEN R, Sweden; 2045-2115 EE, "Saturday Show" under R, Ned (Zilmer)
- 9720nf SAUDI ARABIA Riyadh; 0600-0630 external svc now here, ex 9620, HS in AA previously on this spot (Padula-Austi); Now 350 kw, not 50 kw (Willis-Austi)
- 9720 KIRGHIZ SSR Frunze; 1130-1400 relaying R. Moscow in SEA langs (Legge)
- 9721 PERU R, Victoria; 0330 LA mx, SS ID's past 0430 (Behr)
- 9725 SOUTH AFRICA Radio RSA; 2230-2320 EE, nx, cmntry (Thompson)
- 9730 BELGIUM ORU; 2310 EE, Jackie Marshall's DX px (Slaff)
- 9735 RSFSR (Unknown site) *0800-0935 plus, relaying R, Moscow's JJ svc. Site believed to be Vladivostok (B. Davis)
- 9740 MALAYSIA BBC Tebrau; 1244 EE, string quartet recital (A. Miller)
- 9740 ARGENTINA R, Splendid (assumed); 0038-0130 cut off. Latin operetta type vocals, excited jabber in SS, no ID. Extremely weak and feebly modulated (Hill)
- 9745 IRAQ R, Baghdad; 1933-2010 EE, mx, US pops, AA mx (McCoy, Krause, Dorbert)
- 9750nf ALBANIA R, Peking via Tirana; *0300 EE to Americas, ex 9785 (Padula-Austi)
- 9755 E. GERMANY RBI; 0300* ending GG to LA s/off w/anthem (Padula-Austi)
- 9760 NETHERLANDS ANTILLES TWR; 0458-0515* AA chants, EE ID (M. Smith)
- 9765 AUSTRALIA RA, Perth; 1420 EE tests from OTC facilities (Willis-Austi)
- 9770nf CUBA R, Habana; 0220-0230 SS, LA and US pop mx, ID (Tuchscherer); 0320-0330 SS, speech sounding like Castro, followed by ID //9550 (Earhart)
- 9770 HAITI 4VEH; 1215-1245 EE, nx, rel px, ID (Krause, Moritz) / (Shingler)
- 9770a W. GERMANY DW; 1932-1955 EE, nx gave address and sked, into FF 2200
- 9780 CHINA R, Peking; 0124 EE cmntry (Sharp)
- 9790 ALBANIA R, Tirana; *0200 ID as "Ju flet Tirana" (Slaff)
- 9805 EGYPT R, Cairo; 2159-2210 EE, nx, cmntry AA mx (Krause, Hersh)
- 9815 ISRAEL IBA; 2005-2045 EE, nx, "Sunday Magazine" (Zilmer, Moritz)
- 9825 ENGLAND BBC; 2110 EE, discussion on Turkish politics (Slaff)
- 9912 INDIA AIR; 0030-0045* Tamil, YL w/ID at s/off, local nx before (Mayer)
- 10009.5-10v CLANDESTINE Liberation Radio; 1230 EE (Willis-Austi); 1330-1447 OM in assumed VV, 1400 ME&YL in FF, 1430 EE ID, nx and cmntry (M. Smith)

- 10068 N. VIETNAM VoV; 1235 OM in VV talks (Salmaniw)
 10726 CHINA R. Peking; 1300 short CC anmts repeated over and over, then station often leaves the air and returns for 10 - 15 minute transmissions. Perhaps a UTE? (Willis-Austl)
 11290nf CHINA R. Peking; 1020 CC HS now here //11330 (Willis-Austl)
 11330nf CHINA R. Peking; 0940-1327 CC HS and is often irregular (Willis-Austl)
 11471 USSR R. Moscow; 1330 HS here, almost but not quite normal, AM mode, so probably AM plus 1 single sideband. However is easily readable and had ID at 1330 (Willis-Austl)

With that last item, I am hanging up the old editor's eye shade for the last time in this capacity. As you will have noted elsewhere in this issue Larry Yamron takes over as editor of LR-B next month. Back in October of 1973 I agreed to fill in for David Potter on a temporary basis as editor of this section. Here it is some twenty months and ninety seven pages of typed copy later that I turn this section over to someone else. It's been fun for the most part, and I have gotten to know a lot of friends of the hobby on a more personal basis than I would have been able to do so otherwise. A special thanks to those who have taken the time to offer a few words of appreciation for these humble efforts. I have tried to give fair treatment of the reports sent to this section although space limitations have made it necessary to reduce the contents of some of the items reported. I hope all reporters will give Larry Yamron the same support in the future and any reports mailed to me before this appears in print will be forwarded to Larry.

o o o (M. R. Leonhardt 4/20/75)

FOR SALE: Mosley SWV-7 Short Wave Vertical Antenna with instruction sheet, \$25.00 delivered. Write M. R. Leonhardt, P.O. Box 13, Liberty, IN 47353.

- For Sale: Hammarlund HQ-180A in superb condx along with BC-221 freq. meter (original xtal & book, and AC power supply inside); \$350 for pair, or will sell separately. I pay shipping.
- For Sale: Drake R-4B in mint condx, along w/13 extra xtals for appropriate bands; \$500, including shipping costs.

Will dicker on both of above; need cash to buy R-390A. Write to Hank Michalenka, 14 Brook St., Central Falls, RI 02863

Dear Dan,

First let me congratulate you on your years of effort as Publisher of NASWA. You did a great job, the bulletin has always come out neatly and promptly, maintaining its previous high standard. (Richard Wood)

Dear Dan,

"I greet with mixed emotions your turning over the publishing chores. I know how much of a job it has been, and the frustrations of spending all the hobby time turning out a publication, leaving none for DXing. By the same token, I've watched FRENEX grow into the best shortwave information source I've seen in 25 years in this zany hobby, during your tenure at the helm. ...

"I trust you retire with a sense of accomplishment and the knowledge that most of the people in the hobby appreciate, respect and admire what you have done."

(John Callarman)

Dear Dan,

Glad to see you'll finally be getting a break from running NASWA almost singlehanded. We all appreciate your hard work and long hours. (John L. Kolb)

I've usually (maybe always, I don't really remember) omitted publication of the many complimentary letters that have come in, as most were directed to me personally, and, of course, the job of getting out FRENEX every month is shared by the section editors and the publisher alike. Above are a few that were recently received.....I leave the helm, but not the club, as you will be seeing some reports from me in the LR sections. NASWA is in a strong position, with the top editors, and new publishing and HDQ personnel. I urge all members to give them your full support. Dan Ferguson

LOG REPORT 5-75

section c

Editor: Jerry A. Lineback
P. O. Box 325
St. Joseph, Illinois 61873
USA

Next deadline: May 15, 1975
11600 kHz up

- 11620 INDIA AIR; 2100 EE, nx, //11740, poor, (Zilmer 3-28)
11630 EGYPT R Cairo; 2315-2330 AA, EE ID, AA mx, M&W ancres, gen AA px, fair (Earhart)
11643 ISRAEL IBA; 2013-2020 HH, 0720 HH, poor (Earhart 3-9, Willis-Australia 3-28)
11672 PAKISTAN R Pakistan; 1248-1300 Urdu, 1300-1310 EE ID, nx, TC, 1310-1326 Urdu
tlk, fair-poor, flutter, //15520, (Zilmer 3-22, Russell 4-2,3)
11685 CHINA RP; 1230 EE, nx, cmntry, fair (Zilmer 3-22)
11687 INDONESIA RRI; station here unlisted, has long relays from Jakarta, often blocked
by Peking, very weak, (Willis-Australia 3-23)
11695 CLAND (BULGARIA) Danishir Peyk-e-Iran Radyosu; 1710 ID in Azerbaijani, steady at
good level, het on low side, 1713 harp IS, no 11415, (Hauser 4-3)
11700 USSR RM from Khabarovsk; CC service *0200-0530*, usually good signal, (B. Davis)
11705 SWEDEN RS; *1830 EE, Saturday show to ME, poor (Zilmer 4-5)
11705 FRANCE RFI; 1700-1800 EE, Paris calling Africa, then FF, good (Salmaniw)
11710 ARGENTINA RAE; 2200 IS, FF ID into FF px, 2345 EE, LA mx, fair (Lovett 4-2, Hersh
3-19, Miller 3-19)
11710 NEW CALEDONIA R. Noumea; *0600-0620 FF, tlks by M&W, US/FF pops w/OM DJ, fair
(Schwarz 4-1)
11715t ALGERIA RTVA; 2217-2302 AA, no ID heard but typical AA mx, (McCarthy)
11720 CANADA/CUBA CBC vs RHC continues from 1900 on, SAH of 2.5-2.7 kHz between them,
serious conflict continues, (Hauser 3-22)
11720 CHINA RP; 0200 CC, usual format, fair, //11945 better, (Salminiw)
11725 JAPAN NHK; *2345-0000 EE, nx, QRN, fair (Dorbert)
11725 CUBA RHC; VoV px in EE, 0209, 0115-0127 EE cmntry, good-excellent (Duke 4-8,
Brunner) 3-25)
11725 VATICAN VR; 2035-2050 in lang to SEA and India, 2047 EE on Palm Sunday, (Moritz/
11730 MALAGASY REP(t) RN; 1957-2030 FF, unfamiliar trumpet IS, FF ID at 1958 & 1959,
pips and singing ID as Radio Nederland, Hilversum, Holland, at 2000, px of
African mx, good (Russell 3-22)
11735NF SWEDEN RS; 1600 EE, (Willis-Australia 3-5)
11735 MOROCCO RTM; 1350 AA, endless chants, (Koran reading?), poor (Miller 3-28)
11740 ECUADOR HCJB; 1530-1615 EE, gospel mx, choral mx, "Shalom" px, nx, good (Thompson)
11740 AUSTRALIA RA; 1201-1215 EE, World nx, Australian nx, ID, xed by HCJB at 1214,
not listed?, fair (Russell 4-3)
11740 INDIA AIR; 2200 EE, nx, cmntry, poor (Zilmer 4-5)
11745 ECUADOR HCJB; 1214-1215 EE, s/on w/mx, ID, freqs by M, listed on 11740, excellent
level, (Russell 4-3)
11750 MALAYSIA(t) BBC; 1159-1215 EE, BBC ID, TC, nx, tlk, 1215 violin mx, Tebrau list,
poor (Russell 4-3); 1600 WS nx, cmntry, off at 1615, good (McCoy 4-4)
11755 USSR RM; 2100 EE, nx, fair (Zilmer 3-22)
11760 CUBA RHC; 1730 SS, "Cuba Responde", good (Lovett)
11765t BRAZIL R Tupi; 0221 PP?, man with fast talk, echo, latin mx, poor (Duke 4-8)
11770 MEXICO R Mex; 1822* SS end of mid-day tx, 0057, 0150-0210, 0000, SS mx, nx, rel
px, poor-good (Slaff 3-17, Earhart 3-28, Hauser 3-20, Jones 4-5)
11770NF INDIA AIR; GOS to Asia, EE 2245-0115 now here ex 11710, (Padula-Australia 3-8)
11775NF SAUDI ARABIA BSKSA; *1500, 1550-1605 AA, ID, tlk, nx, fair (Willis-Australia 3-7,
Mayer 4-6)
11780 NEW ZEALAND RNZ; 0555-0630 EE, IDs, freqs, TC, nx, cmntry, mx, fade by 0630,
//9540 not heard, fair-poor (Brunner)
11780 BRAZIL R Nac; 2130 EE class mx, features, 2157* w/px sched, annced 1900 PP, 2000
GG on 15245, RNE QRM, *2100, Brazilian rock on another day, fair-good (Talbot,
Russell 3-8, Hauser 3-18, Earhart 3-9, Pice 3-15)
11785 GERMANY (FR) DW; 1730-1750* EE to Asia, Panorama, ID, tlk, mx, annced daily
*1720-1750, very good (Brunner)
11790 USSR R Yerevan; *0800 Armenian, FF at 0850, 0900* to Eu., //11830 also hrd,
(Padula-Australia 3-8)
11790 ROMANIA RB; 1730 nx in EE till 1735 when AFRTS s/on QRMs them, fair (Zilmer 3-23)
11790 S AFRICA SABC; 1349 EE Cricket match, similar coverage but not // on R RSA 15220,
fair (Hauser 3-21)
11800 SRI LANKA SLBC; 1930-2000 EE, nx, sports, to Eu, excellent (Dorbert); 1713 Hindi,
sub-cont mx, ID, 1730*, (McCoy 4-2); 1300-1500 Hindi, vocals, tlks, fair (Thompson
3-22); 1900-2000 EE to Eu, (Salmaniw) TENT, 0120 ID in Hindi, sub cont mx,
f/o by 0145, fair-poor (Shingler 3-22)
11800t CANARY IS RNE; pops w/M&W DJs, SS, QRM (Duke 4-8). No time given.
11805 SPANISH SAHARA R Sahara; 2339-0000* AA mx, M&W in AA, drums, flutes, (M. Smith);
0835 SS tlks, EE pops, replaces AA, (Padula-Australia 4-2); 1627-1759* SS,
pops, several days poor-good (Cress since 3-17)

- 11805 BRAZIL R Globo; 0055-0110 PP, excited annrc describing sports event, ads, poor (Earhart 3-30)
- 11805 ENGLAND VoA Wooferton; *1400 EE ID, into lang to USSR, fair (Zilmer 3-30)
- 11810 AUSTRALIA RA; 1230 EE, Listeners corner to E Asia, fair (Zilmer 4-5); 0000-0600* Shepparton with relay of S. Australian Network px from SAN Adelaide, possible feed or back up service for new MW outlet at Gove Northern Territ, call 8G0, Gove has no direct link to Darwin, (Padula-Australia 4-5)
- 11810 CLAND (ALGERIA) VoP; 1830 AA, ID, tlks, (Slaff 3-27)
- 11815 NETH ANT TWR; *0045-0105 EE, rel px, nx, mx, fair but variable, 0110-0132 EE rel px, fair (Earhart 4-1, Thompson 3-28)
- 11815 JAPAN NHK; 1708 nx in EE, fair, (McCoy 4-2)
- 11820 ASCENSION IS BBC; 2000 EE, nx, fair (Zilmer 4-6)
- 11820 MOZAMBIQUE LMR; 0510-0520 PP ads and pops via long path, (Padula-Australia 3-10)
- 11825 TAHITI RT; 1620-1700 FF, vocals, orch mx, nx, guitar mx, good (Thompson 3-20)
- 11825 INDIA AIR; 0005-0015 GOS in EE to Asia, //11770, ex 11895, (Padula-Australia 4-5)
- 11830 ETHIOPIA ETLF; 1945 Hausa into EE, annc 11840, good-exc. (Salmaniw)
- 11835 HATTI R 4VEH; 1257-1400 EE, rel px, nx, IDs, poor (Lausevich 3-3, Pineault 4-5)
- 11835 URUGUAY R El Espectador; 0225* suddenly, SS, sports, class mx, ID at 0132, fair-poor (Duke 3-27)
- 11840 AUSTRALIA RA; *1800 EE, wx, nx to Pacific, poor (Zilmer 3-23); 1803 briefly good on 3-24 w/nx, deteriorated altho on 63° beam to Pac same as used to NA, presume short path, wiped out by VoA carrier at 1818 for 1830 FF tx, (Hauser)
- 11840NF SWITZERLAND SBC; 0700 EE, ex 11870, (Willis-Australia 3-5)
- 11845 USSR Zhigulevsk list; 1245-1302 lang, lite mx, tlk, RM IS at 1300, (Tuchscherer)
- 11845 ECUADOR HCJB; 2120-2130 GG to Eu, ex 11865, (Padula-Australia 3-27)
- 11850 USA VoA Delano; 1529 IS, ID into lang to Asia, good (McNeil)
- 11850 CUBA RHC; 2015-2040 SS tlk by Castro, into AA at 2040, (Tuchscherer 3-13)
- 11855 SEYCHELLES IS FEBA; 1749-1802 EE rel px, IDs, fair (Schwarz); 1818-1900 IS, AA tlk, class mx, good (Salmaniw)
- 11855 AUSTRIA ORF; 2000 EE, YW nx, under RCI IS, very poor (Mayer 3-23)
- 11855 SAUDI ARABIA BSKSA; 1658 IS, 1701 EE ID by YW, then AA mx and EE tlk, weak and barely audible, (Salmaniw)
- 11860 TAIWAN BCC; 2200 JJ, nx, fair (Mayer 3-28)
- 11860 NORWAY RNorway; *1900 NN, tlk, poor (Zilmer 4-5)
- 11862v ZAIRE R Lumbumbashi; 2139 FF, Zaire Mondiale px, 2200* w/NA then s/on in Vern, good (Salmaniw)
- 11865 BRAZIL RC de Pernambuco; 2347, 0140 PP, echo tlk, ads, pops, IDs, good (McNeil, McCoy 3-15)
- 11870 USSR RM; 1000 KK, (Willis-Australia 3-16)
- 11870 SWITZERLAND SBC; *1815 GG, px to Africa, poor (Zilmer)
- 11880 TURKEY VoT; 1145-1200 Turkish, local mx, nx, 1530 Bulgarian, IS, heavy QRM from R Seis, poor (Earhart 3-25, McCoy 4-3)
- 11880 MEXICO R Seis; 0103, 0205-0218 SS, usual px, off at 0218, (Brunner 3-9, Lovett 4-2)
- 11895 SENEGAL Rd du Senegal; 2150-2215 FF, IDs, nx, 2350-0005* w/NA, fair, QRM, (McCarthy, Shingler 3-22)
- 11895 NORWAY R Norway; *0600 NN, under RFE, (Willis-Australia 3-8)
- 11895 USSR Zhigulevsk list; 1435-1500 tlks by M&W in non RR lang, IS, lite mx, mix w/ VoA Philippines, (Tuchscherer 3-15)
- 11900 TUNISIA RTVT; 1450 AA, songs, ID at 1500, fair (Mayer 3-29)
- 11900 S AFRICA R RSA; 2130-2150 EE, nx headlines, DX tips, many IDs, poor, (Thompson 3-19)
- 11910NF ECUADOR HCJB; 0006-0025* SS, off w/no annmnt in middle of hymn, fair, reputed as Unid in Apr LR, (Earhart 3-24)
- 11915 ECUADOR HCJB; 0030 GG, said px in GG would be on 15375 but kept 11915 going, fair (Earhart 3-24)
- 11915 ENGLAND VoA Wooferton; 1650-1703 in European lang, pops in 3 langs, EE ID at 1700, into nx in Romanian, fair (Earhart 4-6)
- 11920 USSR RM; 1523 Propaganda tlk, IDs, 1529*, (McNeil)
- 11920 IVORY COAST RTVI; tent at 2315 FF, US and Afro pops, 2045 jazz and rock, 1903 EE px w/DJ and pops, ID as external svce, nx, 2303-0000* FF rock and Afro mx, nx, fair-excellent (Lovett 4-1, Cress 4-7, Salmaniw, Meehan 4-5, Moritz 4-8)
- 11925 BRAZIL R Bandeirantes; 2150, 0234, 0040-0050 PP, ads, jingles, tlks, mx, sports event, fair (Zilmer 3-31, Miller 3-27, Earhart 3-30)
- 11925 SPAIN RNE; 2305-2316 SS, class mx, (Brunner) (Earhart 3-16)
- 11925 PORTUGAL RP HS; 1915-2020 PP, lite class mx, PP ballads, one FF song, fair, /
- 11930 CUBA RHC; 0348 VoV px, songs in VV, 0100-0140 EE nx, cmntry, LA mx, QRM, IDs, (Salminiw, Moritz 4-8, Russell 3-9)
- 11930 AUSTRALIA RA; 2300-2315 EE, modern mx, sudden off, to SEA, poor-fair (Zilmer 4-6, Hersh 3-25)
- 11935 S AFRICA SABC Springbok R; 1400 EE, request mx, fair (Mayer 4-5); 1355 Afrikaans (Hauser 3-31)
- 11935 FRANCE RFI; 1700-1800 EE Paris calling Africa, good, (Salmaniw)
- 11940 KUWAIT RK; 1730-1800 EE, IDs, mx, nx, annce alternate freq of 9565, fair-poor (Schwartz 3-29, Zilmer 3-22, Dice 4-5, Earhart 4-6)
- 11940 SINGAPORE R Singapore; 1500-1530 EE, Class mx, piano mx, nx, ID at 1530, fair (Thompson 3-18)

- 11940 FRANCE RFI; 1700-1800 EE Paris calling Africa, (Salmaniw)
 11940 ROMANIA RB; 1304-1325* EE, tlk abt Romania, ID, IS, nx, folk and band mx, poor-fair (Russell 3-25, 26) Brunner
- 11945 CHINA RP; *0000-0053*, 0100-0115 EE to NA, IDs, cmntry, excellent (Dice 4-4, /
 11945 ENGLAND BBC; 1430-1440 CC, tlk, 1850 Turkish, EE/TT lang lesson, 1859:30 txmtr break, into Greek, Euro svce, (Moritz 3-14, Hauser 3-26)
- 11950 USSR RP&P; 1430 EE, nx, poor (Lausovich 3-3)
 11950 BRAZIL R Min da Educaçao; 0003 Jazz, 0030 PP ID, 0158 PP ID, pause till 0207 ID and class mx, fair-good (McNeil, Duke 4-9)
 11950 LIBERIA ELWA; 1919-1945 EE, 2015-2100* EE, rel px, nx, 1945-2015 lang, fair (Brunner, Dice 4-5, Moritz 3-31)
- 11950 HOLLAND RN Lopik; 2204-2230 SS, class mx, nx, fair (Earhart 4-3)
 11955 ETHIOPIA ETLF; 2024-2030* EE, rel px, excellent (Dorbert)
 11955 MALAYSIA BBC FE relay; 0018-0029 EE nx, ID in EE then off, poor (Shingler 3-20)
 11956.25v ALGERIA RTVA; 1815 AA, tlk, into VoPalestine px, freq previously measured at 11965.88, typical variation (Hauser)
- 11959.45 ISRAEL IBA; 1905 RR, causes het below RHC, (Hauser 3-28); 11960 2035 EE letter box px, poor (Zilmer 3-22)
- 11965 BRAZIL R Record; 0245 PP, tlks, mx, ads, poor (Zilmer 3-23)
 11970 CUBA RHC; 0600* SS, ex 11960, (Willis-Australia 3-6)
 11970.8t TUNISIA RTT Sfax; 2020-2050, Koran readings in AA, no anmts, day of Faisal's assassination, might have been special, very poor-fair in QRM and het, (Robins 3-25); 11971 1911 AA tlk, fair, DW QRM, (Salmaniw)
- 11979 GERMANY (DR) RBI; 1728 GG to Near East, drift from 11975, ID at 1728, fair (Salmaniw)
- 11990 USSR Vladivostok Mayak HS; *2300-0900* RR, usually good here (B. Davis)
 11990 CZECHOSLOVAKIA RP; 1730-1745, 1800-1825* EE, nx, mx, poor-fair (McNeil, Zilmer 3-22, Dice 4-5, Earhart 4-6)
- 12000 USSR RM; 1930 EE cmntry to Africa, *2000 IS, PP nx, fair-good (Zilmer, Robins)
 12005 USSR RM; 2033 EE, African Svce, nx, cmntry, mx, good (McCoy 3-22)
 12010 USSR RM; *1530 Verna to Africa, believe eastern Russia, strong //12055 (Young); 2030* Petropavlovsk Mayak px, class mx, sounded like relay, off after ID and a few words of next px, strong (Hauser 3-30)
- 12025 ISRAEL IBA; 2000-2055 EE, cmntry, nx, mx, fair (Jones 3-16, Zilmer 3-22, Robins, Schwartz, Taibot, Slaff)
- 12035 N VIETNAM VoV; 1300 EE, nx, cmntry, mx, ID 1317, poor (Zilmer 4-5)
 12045 ISRAEL IBA; HH HS at 1520, strong, (Young)
 12045 USSR RM; 0200-0230* EE, solid nx, sport nx, orch mx, good (Thompson 3-18)
 12080 CLAND R Euzkadí 1938-2020 SS, tlks, martial mx, fair, sometimes jammed, (McNeil, Miller 3-23, Mayer 3-29)
- 12140 CLAND (ROMANIA) R Espana Independiente; 1822, tlks in SS, jammed from 12135-12150, poor-fair (Robins 3-22)
- 15000 ARGENTINA LOL time station; 2315 ID, TC every 5 mins, poor under WWV (McNeil)
 15000 HAWAII WWVH; 1745-1809 YV anncr over WWV, (McCarthy 2-16)
 15060 CHINA RP; 0042 EE, to NA, cmntry, mx, very good, but some ute QRM, (Robins)
 15084 IRAN R Teheran; 1500-1515 Farsi, mx, ID, cmntry, good (Schwartz 4-4)
 15085t EGYPT R Cairo; 1657 AA, mid-east mx, fair (McCoy 3-22)
 15100 ISRAEL IBA; 1625, Yiddish IDs, class mx, good (Lausovich 3-20)
 15100NF USSR RM; 1300 Thai ID, very strong, (Willis-Australia 3-9)
 15105 CYPRUS BBC Limassol; 1515 EE px to E&S Africa, African nx rndup, poor-fair with fading (Robins 3-18)
- 15105NF HOLLAND RN Lopik; 1010 EE, ex 15110, (Willis-Australia 3-4)
 15105NF SWEDEN RS; 1230 EE, 1300 Swedish, ex 9605, (Willis-Australia)
 15105 JAPAN NHK; 2200-2215 EE, nx repts, cmntry, fair (Thompson 4-7)
 15110 NEW ZEALAND RNZ; 0230-0245 EE, piano mx, orch mx, poor (Thompson 4-7)
 15110 MEXICO R Seis; all day w/tropical mx, ads, IDs, whistles, strong (Lovett, Brunner) 0735-0800 strong (Padula-Australia 3-16)
- 15110NF USSR RM; 1005 Swahili for Africa (Padula-Australia 3-23)
 15110 CZECHOSLOVAKIA RP; 1545 EE, DX px, to S&E Asia, IDs, poor (Slaff)
 15115 PAKISTAN R Pakistan; 0830 Urdu GOS to UK, back here after using 15150 for early March, (Padula-Australia 3-16)
- 15115 BRAZIL R Iguacu; 0218-0238, speech and clear ID at 0230, followed by musica nacional with girls chorus, suddenly off in midst of music, R. Seis off, (MacLeod) Reported as given, no SW outlet for this 560 khz station in Curitiba listed in WRTH, a 27th Harmonic?
- 15120 FRANCE RFI; 1700-1800 EE Paris calling Africa, (Salmaniw) (Dice 3-29) //15300
 15120 MALAGASY REP RN; 2024 EE, His and Hers px, co-channel QRM, (Lovett)
 15120 UNID; 2024 FF tlk under RN, gone by 2120, (Lovett)
 15120 SRI LANKA SLBC; 1930-2000 EE/FF/GG fair (Pineault 3-22)
 15125NF MALAGASY REP RN; 2000 EE, ex 15120, to 2120 to Eu, (Hauser 4-2, Slaff, Legge)
 15125t BRAZIL R S da Bahia; 1420-1430 PP, excited anncr describing sports, fair (Earhart 3-23)
- 15125 PORTUGAL RP; 1531 PP, lots of local mx, to Guinea-Bissau/Cape Verde, Brazil, fair-good (Robins)
 15120 ISRAEL IBA; 0700 now ex 15125, HH at 0745, (Willis-Australia 3-4)

- 15130 USA WYFR; 2325 RR rel px, new service, GG at 2345, (Padula-Australia 3-7)
- 15135 GERMANY (FR) DW; 1010-0130* EE to Aust/NZ, ex 11795, 15275, (Willis, Padula-Australia 3-4, 3-23)
- 15135 BRAZIL R Record; 2240-2310 PP, tlks, mx, ads, jingles, lite pops, fair-poor (Zilmer 4-4, Earhart 3-28)
- 15135 USSR Mayak HS, relay; 1800 in RR like lang, mentions of Leningrad, no HS tx list very good (Slaff 4-3)
- 15140 SWITZERLAND SBC; 1315 EE, 1432-1440 FF, tlks. ID, nx, (Schwartz 4-3, Earhart 3-29)
- 15140 FRANCE RFI; 1700-1800 EE, to Africa, musical requests, nx, (Earhart 3-29, Zilmer)
- 15140 NETH ANT RM; 1645 EE, nx, fair (Zilmer 4-4)
- 15140 USSR Vladivostok RM to NA; *2030-0500* EE, strong at start, poor by end, (Davis)
- 15150 CHILE Voc; 1230-1240 GG, 2218-2227 EE, 0024-0038 RR/GG tlks, fair-poor (Schwartz Earhart 3-20, McCarthy)
- 15150 USSR RM Minsk; 1400-1830 RR, class mx, tlks, //15445, good-fair (Earhart 3-23, Legge) (Zilmer 3-30)
- 15150NF FRANCE RFI; 1700-1800 EE, Paris calling Africa, ex 15360 which was anned, fair/
- 15155 FRANCE RFI; 1630-1701* FF, tlk, then EE ID and abrupt off, (Zilmer 4-5)
- 15155 AUSTRIA ORF; 1505-1515 GG, nx, ID, IS, fair (Schwartz 4-4)
- 15160 FRANCE RFI; 1700-1800 EE, Paris Calling Africa, food (Zilmer 3-22, Miller 3-29)
- 15160 HUNGARY RB; 1040 Turkish, special Sunday tsm, ex 15285, (Padula-Australia 3-16)
- 15165 FRANCE RFI; 1700-1800 EE, Paris calling Africa, (Moritz 3-20, Brunner, Salmaniw); 0710, 0740-0800 FF, NF, (Willis and Padula-Australia)
- 15165 DENMARK RD; 1558 IS, ID and gave freqs in EE, into Danish, 1145 Danish, mx, ID, anmts, nx, (Slaff 3-30, McCoy, Schwartz 4-3)
- 15165 USSR RP&P; 1300 EE, nx, fair (Zilmer 3-22)
- 15170 NORWAY R Norway; 0525 NN to Mideast, ex 15175, (Padula-Australia 3-10)
- 15170 UNID; 2110 AA, man tlking, fade out quickly, poor, ELWA?, (Slaff)
- 15170 TAHITI RT; 0020-0105 FF, rock and oldies, good (McCarthy)
- 15175 NORWAY R Norway; 1600-1630 EE on Sunday, 2200 EE, Norway this week, DX px, fair-poor (Pineault, Zilmer 4-5)
- 15180 ENGLAND BBC; 1150 GG, Eu svce, nx, ID, press review, (Schwartz)
- 15180 USSR R Kiev; 0045 EE, features, facing, poor-fair (Robins)
- 15185 USA WNB; 2030-2245* EE rel px, mail call, said also using 21580, over Finland, fair-good (Robins 3-17, Jones 3-23)
- 15185 FINLAND RF; 1420-1435 EE/Finnish, good DX px, sample interval signals and DX tips, Finnish after 1430, good (Russell 3-25)
- 15195 JAPAN NHK; 2330 EE/JJ, mx, poor (Schwartz 3-15)
- 15195 CANADA BBC Relay; 2030 EE, World Radio Club, poor (Zilmer 3-28)
- 15205 USA VoA Greenville; 1638 RR, fair (Mayer 3-22)
- 15210 BELGIUM RTB; 0630-0735* FF, ex 15205, DD noted on 15125 same time (Willis and Padula-Australia)
- 15220 S AFRICA R RSA; 1547 EE, sports nx, ID, px sched, fair (Miller 3-22)
- 15240 ECUADOR HCJB; 2125 SS to LA, off at 2130, ex 17720 (Padula-Australia 3-22)
- 15240 USSR RM; 0100-0200 CC, fair (Legge 4-6)
- 15240 SWEDEN RS; *1730 PP, tlk, poor, (Zilmer 4-5)
- 15240 YUGOSLAVIA R Belgrad; 1535-1545 EE, nx, ID, fair, (Schwartz 3-22)
- 15245 BRAZIL R Nac; 2020 GG, tlk, fair (Jones 4-6) (Hauser)
- 15245 ZAIRE Kinshasa; 2115 FF, 1802 PP FNLA px, not //15350, suffers Brasilia QRM./
- 15250 ROMANIA RB; 1300 EE, nx, cmtry, folk mx, (Zilmer 3-22)
- 15250 GERMANY (DR) RBI; 2045 FF, poor (Jones 4-3)
- 15250 USA VoA Delano; 2330-0000 CC, nx, tlks, EE ID, then EE Nx, good till 2350 then poor (Schingler 3-18)
- 15255 NETH ANT TWR; 1315 EE, nx, fair (Zilmer 3-22)
- 15265 SWEDEN RS; *1400 EE, (Willis-Australia)
- 15265 SAUDI ARABIA BSKSA; 0910 AA ID, on 3-9, (Willis); 1045 AA, ex 17755 (Padula-Australia 3-16)
- 15273 URUGUAY SODRE; 2250-2330 SS, vocals, ads, mx, tlk, no ID, poor (Schwarz 3-14, Salmaniw)
- 15275 MALTA CBC; 0620, additional freq for EE nx, (Padula-Australia)
- 15275 MALAYSIA VoM; 0630 EE nx, ID, new outlet possibly via Kotakinabalu (Padula 3-15)
- 15290 AUSTRALIA RA; 0425 EE mx to Africa, fair (Meehan 4-1)
- 15290 PHILIPPINES VoA; 2305-2315 EE nx, fast fade and noise, poor (Earhart 3-9)
- 15295 PORTUGAL RP; 2038 EE, RP's EE anncr seems adaptable to all political conditions with his distinctive style, political cmtry, fair (Hauser 3-30)
- 15298 INDONESIA IRIAN JAYA RRI Jayapura; noted here ex usual 15345 *2200 w/px preview, ID, on 3-8 and subsequent days (Padula-Australia)
- 15300 FRANCE RFI; 1700-1800 EE Paris Calling Africa, poor-good (Lovett, Zilmer, Salmaniw)
- 15300 JAPAN NHK; 0033-0040 EE, nx, features, //15270, (Duke 4-2, Robins 3-21); 2350 EE to NA, terrible mess with FEBC, NF ex 11725, (Padula-Australia 3-4)
- 15300 ECUADOR HCJB; 2135 NN to Eu, ex 17705, good (Padula-Australia 3-22)
- 15305 MALTA RCJ; *1800 EE, //15325 Sackville, nx, sports, wx, SW Club, //11785 also reported as poor, fair (Talbot, Zilmer 3-29)
- 15310 MALAYSIA BBC Tebrau; 1600 EE WS to ME, flutter poor (Hauser 3-12); 1535-1545 EE letterbox, flutter, //11955 usually very poor if at all, hrd several times since 3-17 (Cress)

- 15320 LIBERIA VoA; 1800*, fair (Dice 3-16). Not listed.
- 15320 MALAGASY REP RN; 1100-1220 DD, (Willis-Australia 3-10)
- 15320 NETH ANT TWR; 2000-2020 SS, rel tlk, new time, fair (Earhart 3-28)
- 15320NF ITALY RAI; 1432 FF, under DW, (Willis-Australia 3-4)
- 15325NF JAPAN NHK; 0730 GG ID, Eu svce now here, //15390NF, (Willis-Australia 3-4)
- 15345 ARGENTINA R Nac; 1305 SS, pops, fair (Zilmer 4-4)
- 15345 NORWAY R Norway; *1500 NN, EE ID, good (Schwartz 3-26)
- 15345 GREECE EIRT; 1430-1455 Greek, ID, bazouki mx, bad fades, poor to good (Pineault 3-27, Schwartz 3-26, Mayer 3-30)
- 15346 INDONESIA IRIAN JAYA RRI Jayapura; 0300 ID, (Willis-Australia 3-30)
- 15350 ZAIRE Kinshasa; 1822 PP/FF/Vern FLNA px, Kinshasa ID at 1835, FF tlks, Afro mx, different px hrd on 15245, (Hauser 3-24, 25)
- 15350 LUXEMBOURG R Lux; 1600-1800 FF, good, 1905 FF nx, mx, ads, fair (Pineault 3-29, Schwartz 3-16)
- 15350 USSR RM HS; 0000-0200 RR, 0300-0700 RR, (Willis and Padula-Australia 3-8, 30)
- 15360 FRANCE RFI; 1700-1800 EE Paris calling Africa, replaced by 15150, poor (Zilmer)
- 15365 ROMANIA RB; 1430 in Parsi, this is freq used for R España Independiente which that was thought to be from either Bulgaria or Romania, (Willis-Australia 3-30); 1430-1530 FF to Africa, fair (Legge 4-9)
- 15365 ETHIOPIA ETLF; 1933-1950 FF, tlk, short mx, more tlk, fair-poor (Earhart 3-28)
- 15375 USSR RM Khabarovsk; *0600 CC svce, usual f/o by 0700, but has been heard as late as 0900 still going, (B. Davis)
- 15385 ITALY RAI; 1425 II end of px to Canada, good (Jones 3-15)
- 15400 IRAQ R Baghdad; *1400 Urdu ID, (Willis-Australia 3-3)
- 15410 USA UNR Greenville; 1800-1810 FF, nx, good, (Pineault)
- 15410 RWANDA DW Kigali; 2200, 2313-0012 GG tlk, cmnt, local ID, nx, mx, fair-excellent, (Slaff 3-27, Moritz 4-9)
- 15415 BRAZIL R C Riberão Preto; 0200-0230 PP anmts, pops, heard again here after several months inaudible, (Padula-Australia 3-8)
- 15420 SPAIN RNE; 1955 SS, ID, contemporary instrumental, unlist, slop from RFI, but good (Robins 3-21)
- 15420 CYPRUS BBC; 1310 EE, nx abt Britain, poor (Zilmer 4-4)
- 15425 GREECE EIRT; 1320-1350*, Greek ID, local mx, fair-good (Robins 3-17)
- 15425 FRANCE RFI; 1715 EE Paris calling Africa, 1957 FF, mx, good (Zilmer 4-4, Robins)
- 15425 SRI LANKA SLBC; 1640 EE rel px, then pops and oldies, EE ID by YW at 1645, fair, flutter, but readable (Cress 3-21); 1500 EE pops, BBC nx at 1600, fair, (Zilmer 4-4, Mayer); 1600-1630 EE rel px then semi-class mx to 1700, poor QRM from RFI, (Talbot 3-23); 1603-1610 EE BBC nx, 1650-1725 EE US pops, nx and tlk at 1700, poor-fair (Russell 3-25, 4-1)
- 15430 SWITZERLAND SBC; 1315 EE, nx, poor (Zilmer 4-4)
- 15435 TANZANIA RT Dar es Salaam; 2000 EE, Namibia hour px, tlk abt SW Africa, Magne reported it on Zambia from 1930, sched change?, poor-fair in slop, (Robins 3-21)
- 15435 MALAYSIA BBC Tebrau; 0030* end of EE WS, ID, fair (Robins)
- 15450 USSR R S Atlantika; RR ID, tlk, and mx, *1230, fair-good (Jones 4-6)
- 15455 USSR R S Atlantika; 1620-1631 RR, non-stop harp mx, organ IS, ID by M then by W, fair-good (Russell 3-25)
- 15480 MEXICO R Mex; badly mistuned tx on 15125 putting out wideband FM spur here at 15500
- 15500 2315 on 3-22, spur on 15500 at 1435 on 3-22, (Hauser)
- 15505 USSR RM HS Alma Ata; 1005 RR anmts //15460, (Willis-Australia 3-16)
- 15520 PAKISTAN R Pakistan; 1507 Urdu, *1500 in EE after IS similar to AIR, GOS to ME, slow speed nx, fair (Mayer 4-5, McCoy 4-5, Zilmer 4-4, Hauser 4-5)
- 15530 BANGLADESH RB; 1230-1300 EE, (Willis-Australia 3-9)
- 15590 CLAND VoMalayan Rev; 0930-1000 w/new EE svce, (Willis-Australia 3-20)
- 17700 PAKISTAN R Pakistan; 1459 ID, sub cont mx, nx at 1500, mx 1552, fair (Shingler 3-22)
- 17710 SWEDEN RS; 1426-1444 EE to 1430 then Swedish, cmtry, Saturday show, ID, fair-good (Miller 3-30, Jones 3-22, McCoy 3-22)
- 17720 FRANCE RFI; 1700-1715 EE, Paris calling Africa, poor-strong (Zilmer 4-4, Slaff 4-3)
- 17720 USA WINB; 1925-1935 EE, rel px, ID, poor although only 50 miles away (Earhart 3-9)
- 17730 MALAGASY REP RTM; 1503-1558* EE/FF px, DJ, fair (Salmaniw)
- 17730 ECUADOR HCJB; 1950 EE, px info, 1935 EE rel tlk, poor-good (Hersh 3-17, Earhart)
- 17740NF AUSTRALIA RA; 0200 EE, (Willis-Australia 3-22)
- 17745NF USSR RM; 1000 Khmer px, //15185, 15210, 15330, 15360, 15385, 15395, 17840, (Willis-Australia 3-16); 0440 Swahili to Africa, (Padula-Australia 3-7)
- 17745 EGYPT R Cairo; 1800-1820 AA, Big Ben like chimes, fair (Earhart 3-28, Hauser 3-27)
- 17750 PHILIPPINES VoA relaying UNR nx to Singapore and Malaysia, EE, 0230, good (McNeil)
- 17750 PAKISTAN R Pakistan; 0630 GOS in Urdu to ME, blocked at 0700 by R Liberty and jammers, (Padula-Australia 3-8)
- 17755 SAUDI ARABIA BSKSA; 1300-1400 AA, QRM from RAI, RFI after 1400, (Legge 4-5)
- 17765t RWANDA DW Kigali; 1222-1245* EE, African svce, into Hausa, ID for DW K81n, but WRTH lists Kigali, fair-good (Russell 4-3, Jones 3-22)
- 17780 S AFRICA R RSA; 1610-1614 EE, cmtry, ID, poor (Russell 3-26)
- 17805 SPAIN RNE; *1300 SS, IS, ID, mx, to LA, good (Jones 3-22)
- 17815 BRAZIL R Cultural de São Paulo; 2340-0000 PP, slow clear IDs, tlk and mx repeated, sounded PP/Lang, did any others hear this, not hrd next day, (Brunner 3-18)
- 17825 BULGARIA RB; 1905 s/on of EE to Africa, fair (Legge 3-25)

- 17850 FRANCE RFI; 1631-1700 FF, Jazz, t1k, 1700-1710 EE Paris calling Africa, IDs, (Miller 3-22, Zilmer 3-22, Earhart 3-22)
- 17865 EGYPT R Cairo; 1645-1655 Swahili, string mx, fair (Earhart 3-22)
- 17880 ECUADOR HCJB; 1530-1615 EE, Shalom px, rel vocals, nx, orch mx, fair (Thompson 3-17)
- 17880 MALAYSIA BBC; 0900 EE, WS nx, poor (Meehan 3-23)
- 21535 S AFRICA R RSA; 1519-1530 EE, interviews, fair (Earhart 3-23)
- 21635 NETH ANT RN; 1720-1738 DD, mx, t1k, fair (Earhart 3-28)
- 21720 GHANA RG; 1405 EE, nx, IDs, slogans, fair (McNeil)

UNDERSTANDING SHORT WAVE PROPAGATION

During the past few months I have been filling up my page allotment with various items on shortwave radio propagation. With the approval of the new NASWA Executive, Mac Leonhardt, we are going to make this effort a formal, although small, column. Therefore I am soliciting for ideas and material from the membership for this column. Let me know what you would like to see discussed. We do not intend this column to be predictive in nature, although I will continue to comment on the current conditions. Rather, we would like the column to help NASWA members to better understand the nature of the earth's physical environment as it affects the transmission of radiowaves. We will try to keep the discussions at as low a technical level as permits adequate explanation. Let me hear from you.

CURRENT CONDITIONS

The solar cycle continues to decline like the National Economy (any relation?—hi). Solar flux values of 67 were reported at the end of April. The last peak in solar activity was on April 5-6 with a high reading of only 74 reported. Another peak ought to take place about May 4 and again May 30. There was a geomagnetic disturbance peaking March 27 and another prolonged minor storm from April 5 to 14. An "A" index reading of 35 was reached on April 9. Another minor disturbance should happen just after the next peak in solar activity.

RADIOWAVES IN THE ATMOSPHERE

Before we can discuss understandably the variations in radiowave propagation due to perturbations in the earth's atmosphere and magnetic field, we should try to understand radiowaves in general and their transmission in the presence of a gas—the atmosphere. This is a rather audacious undertaking in a short article since much is not yet thoroughly understood and what facts are known are often expressible only by mathematical notation. We will, however, try to express the basics in simple technical English.

A transmitter creates a varying electrical field between an antenna and a "ground". This electrical field varies in intensity and in turn gives rise to variations in the intensity of the magnetic field, which in turn gives rise to variations in the electrical field intensity, etc. Once established, the original disturbance is sustained by the mutual interaction of the electrical and magnetic components of the electro-magnetic field. The propagation of a radiowave is analogous to throwing a stone into a pool of water. The wave travels through space with the velocity of light. In a vacuum, the amplitude of the variations of the EM field decrease with distance as the waves expand to a greater and greater size just as ripples expanding from a stone dropped in a pond gradually dampen out with distance. The damping-out effect is expressed by the inverse square law that says that the strength of the EM field variations decrease as the inverse square of the distance from the source. This law effectively limits the distance a signal of a certain strength can be heard. The variations in the EM field reaching a receiving antenna create a variation in electric field intensity between the antenna and the ground that can be amplified and changed into intelligible information by the receiver.

If all space were a vacuum, the only major problem with receiving radio transmissions would be the distance between transmitter and receiver. In the presence of the earth, its atmosphere, and its magnetic field, several additional impediments are placed in the path of a radiowave.

Absorption: The atmosphere absorbs radiowave energy. This results from the presence of free electrons and charged particles in the atmosphere, particularly in the ionosphere. The passage of an EM wave front causes electrically charged particles to move back and forth in response to the variations in the EM field. This happens just like a mote in the water is caused to bob up and down when a water wave passes. When the electron density is great, collisions take place between the charged particles. These collisions absorb some of the EM energy and attenuate the signal strength. In the daytime D region of the ionosphere, radiowaves below a frequency of 7 MHz are absorbed within a few hundred miles of their source and under unusually high electron densities, all radiowaves may be absorbed (shortwave fade out).

To be continued:

73s to all our contributors

Jerry A. Lineback

NASWA FLASHSHEET

The Flashsheet is published twice monthly by NASWA, Box 8542, Charleston, W. Va. 25303

MAY 1975

Freq: kHz

Time: GMT

AL NIBLACK, EDITOR, 420 Shelby St., Vincennes, Ind. (47591 DEADLINES 10 and 20th MONTH**
(Please note adjustment in deadlines)

Reproduction of items here-in is welcomed, provided credit is given the NASWA FLASHSHEET
and to the individual reporting. Thank you.

To the loggings:

ALBANIA Relays by Tirana of Peking's LA Svcs currently observed on new 9750, with EE 0300-0400(ex-9785), and SS 0200-0300(ex-9500). (Bob Padula)

AUSTRALIA 7235 RA noted at 1130 with Waltzing Matilda, into language. (Jack Jones)...
RA reported testing from Perth or Western Australia to replace former Darwin facilities,
no fogs or times listed as yet. (August Balbi)

BOTSWANA On 4845 at 0430, a man and some music, but unable to get an ID that I
could recognize. Either off or faded out at 0502. (Ken Earhart)

BANGLADESH Dacca, GOS, now noted on new 15405 with AA 0515-0545, preceded by EE 0445-0515,
for M.E. Scheduled also for 17890, but channel blocked by strong Radio Pakistan outlet,
4/11. (Bob Padula)

BRAZIL 15135 Radio Record from 0015 in native with apparent live audience to 0100; IDs in
PP 0029 and 0100. (Hadley Cress)...6015 R. Clube de Pernambuco at 0200, with PP and
jingles...6165 R. Cultura at 2355 with PP ID, IS, though poor lvl...11875 R. Sociedade da
Bahia at 2300 with PP ID, music, jingles; audio strong but somewhat distorted. (Credit
all the previous items to Bob Zilmer)...R. Diario da Manha on 9675 at 0225, PP, S/off
0233...11925 Radio Rendeirantes at 0040 in PP, possibly soccer game?...Radio Globo, 11805,
at 0055, PP, also possibly a sporting event. (Credit all the previous items to Ken Earhart)

CHILE 11810 VoC Prgm fair in language at 1500, though QRM de WUD. (August Balbi)...9590 R.
Presidente Balmaceda at 1100 with SS ID, talk, music, on 4/17, poor to fair lvl. (Bob
Zilmer)

CHINA(PR) Hangchow, 2475, man and woman talking in CC at 1010, fair lvl. (Bill Sparks)...
15060M, Radio Peking with an ID, in EE 0010-0030, news mentioning liberation of Phnom
Penh, v'y strong lvl. (Richard Schwartz)

COLOMBIA (Please see previous FS) (FLASH) In re this one on 5962, collaborating with
Gerry, we have reached the conclusion that this is La Voz de los Centauros, in Villa-
vicencio. NRC recently listed the MW channel as ex-Horizonte Llanero. It does appear to
be new on SWBC. (Don Jensen, Gerry Dexter)...5962A Noted 4/13, all SS, many IDs, can't get
the last word, know located at Villavicencio, with 10kW MW, 5kW SW, also on FM. Ads, TCS,
1107. (Jack Jones)...5962 This new one is possibly La Voz del Cantalvo, or Cantalvo, all
SS - have a tape. (Hadley Cress)...5962 This one booming in tonight at 0309; only clue
so far is, "Bank of Colombia", ad. Will try again. (John Tuchscherer)...Closest I ever
got to an ID on this new SS spkr that I reported in last FS was, La Voz del Centuaro,
Villavicencio. (Al Niblack)

DOMINICAN REP 4825 LV de la Fuerzas Armadas (probable), noted 0200-0210 SS, few annts,
mostly semi-classical instrumentals, gave ID, but was QRM'd and garbled, but QTH was
positively Santo Domingo, DR. (Jerry Lineback)

ECUADOR Surprise!! Another new QSL received, a nice letter from LV del Napo, 5280, plus
a color PC. The letter was translated into EE by an EE teacher at the mission. VS is Rev.
Luis Tirado, Radio Director. (Bill Sparks)...R. Nacional Progreso logged 4/1, at 0510, on
5065, up in fgy, from usual spot; fiesta music, final ID, and off. (Bill Sparks)...4876
(See previous FS) After more listening to my tape on the Latin here, discovered that
the outlet was indeed saying, "La Voz de Esmeraldas", all right--though did not sound like
it at first. (Bob Hill, Jr.)...4900 Noted from 0515-0601*, in SS, and native format, a
pretty good signal, but I am not at all sure that its listed Radio Rio Amazonas. This on
a local Sunday night. (Neal Perdue)...3985 Es Rfonias Populares at 1030 in organ music,
local language, some SS, at fair lvl. (Bob Zilmer)

ETHIOPIA 11810 EPLF, VoC, observed S/on at 1745 in language. (August Balbi)

FRANCE RFI 1700-1800, using 17720, 17890, also fogs in 19 MB, in Paris Calling Africa.
(August Balbi)...Paris on new 15150 in 0800-0900 period, in FF in parallel to 15155,
where is also heard. Making a lot of fgy changes of recent. (Bob Padula)...15300 RFI
on 4/13, from 1700 in EE to Africa, including initial news of military coup in Chad
and assassination of their President; fair lvl in parallel with 15160(not 15165), and
15140; their outlets not heard on 15120, 11935, nor 11705. (Hadley Cress)

GERMANY(W) 6190 Sender Freies Berlin via Bremen transmitter, currently heard 0530-0605
period. Dance music, TC, GG annts, an ID at 0600. This one rarely heard in Melbourne -
have never heard Bremen with own prgm on 6190, though listed for 2300 period. (Bob Padula)

GREECE KIRT, Athens, 15345M, *1430-1445, Greek, ID, annts, bazouki music, 4/6. (Richard
GUATEMALA 4825 (FLASH) QSL in from Radio Mam. V/S is H. Teresa Herrera, / Schwartz)
Coordinadora. Rums 1kw, since 1/11. call is TGMN, and QTH is: Escuela Radiofonica
Cabrera Huitan, Cabrera, Quetzaltenango, Guatemala. (Gerry Dexter via NU.)

(continued)

GUATEMALA (Continued) 3300 Radio Cultura at 0315 with EE religious prgm. (Bob Zilmer)
HONDURAS 5960 La Voz de Occidente at 1045 with SS music, fair lvl, 4/11. (Bob Zilmer)
 ...4890 Radio Lux from 2350 in SS, man and woman, LA music, about 500 hertz below
 Radio Dif Venezuela, and easily separable on LSB, nice. (Neal Perdue)
INDIA 11740 AIR at 2200 with EE news, paralleling 11620, fair, and poor to fair sigs.
 ...9525 AIR, 2200, with EE news, also is a parallel. (Credit both items to Bob Zilmer)
 ...AIR GGS now noted on new 11770 and 11825 in 2245-0115 period. Not heard on usual
 11710, or 11895, and possibly replacing those outlets. Also on 9575 (ex-listed 9570)
 to Asia, from 2245-0115, 4/5. (Bob Padula)...9625 AIR with IS at 1215, though mixing
 with CBC NS, then opening in Cantonese, not on WRTH listed 9630; soon faded. (Glenn
INDONESIA (JAWA) A new outlet is 4772, noted S/on at 2200 with relay of Ja- / Hauser
 karta national news. Is a different prgm after 2210 to usual Jakarta outlet on 4805.
 Robert Yeo also hears in evening period with ID as, "Radio Khnusus", at 1217. Location
 unknown as yet! (Bob Padula)...7161.88 (WEST IRIAN) RRI Jayapura ID, 4/12, 1228, mixing
 with VOJ-Japan; which is likely the reason RRI down from nominal 7165, only fair lvl.
 (Glenn Hauser)
ISRAEL With advent of DST in Israel, 0500 EE xmission moves up to 0400, and 1130 to
 1030. However, this summer, 2000 prgm stays as is, and new fqy of 15485 should improve
 after May 4. (Glenn Hauser)
JAPAN NSB, new prgm 1530-1615 in EE, Tokyo Forum, best lvl on JOZ3, 9595, paralleling
 6055, which is fair listening lvl. (August Balbi)...3910 FEN at 1150-1155 in EE, US
 pops and light music, ARO QRM, but fair level. (Jerry Lineback)
KOREA (N) 9370 R. Pyongyang at 1200, with EE news, cntry. (Bob Zilmer) (Is 9370 correct?, Editor)
KOREA (S) 9640 Radio Korea with EE news at 1900, FF at 1930. (August Balbi)...Taegu, 2510,
 with KBS H.S., in KK; pops, dance music, fair sig in the clear. (Bill Sparks) (1030)
KUWAIT 11940 At 1720 HK noted in EE, pops and small talk to 1730, when gave ID and local
 news. (Ken Earhart)
LEBANON R. Lebanon, 9525H, 0240-0305, EE, prgm "Far Away Places"; 0305 into SS, good
 lvl. (Richard Schwartz)...9525 Beirut, 0228, in EE, though QRM de Radio RSA. (Ken
LIBERIA ELWA, 4770, 2215-2230, EE religious prgm, ID, in Home Svc. (Richard / Earhart)
 Schwartz)
MADAGASCAR RN M Relay moved to 15125, noted 2000-2120 in EE. (August Balbi)
MALTA CBC Relay S/on at 0600 on 7290, in FF language. (August Balbi)
MALE 5995 Logged 2325-2400* in FF and vernacular, IS, an ID, off with anthem by a
 military band, though I did not get an ID. Don't think is Martinique. (Jack Jones) (Is
 Bamako, Editor)
MARTINIQUE 5995 First logged 3/13, 0220-0259, and almost daily since. Hard to read soft
 voiced woman announc in FF. Never readable till Vatican signs off. Final ID at 0259, stringed
 instrument IS. My country #126, I finally vacated that 125 HIG spot! (Hadley Cress)
MOROCCO RTW observed on 5960 with AA Svc 2230-2300, apparently replacing 6190, latter
 outlet not heard at this time; however, still noted on 6190, in 0600-0800 period 4/11.
 (Bob Padula)
MOZAMBIQUE RCM 3338, Afro music and anncts in African language; ID noted 0400. (Bill Sparks)
PAPUA Radio Western Highlands (Mt. Hagen), 2450, man in language and pops, fair signals,
 but not as strong as either New Ireland or West New Britain. (Bill Sparks)
PARAGUAY 6025 H. Nacional at 2345, with SS ID, talk and music, pretty fair signal on
 4/11. (Bob Zilmer)
PERU 5970 Radio El Sol in SS, though amidst QRM, at 1045, Andean music, until Radio
 Canada carrier covered at 1058. (Ken Earhart)...4935 Radio Tropical heard at 1030 with SS
 Andean style music, an ID, though not robust lvl. (Bob Zilmer)...4995 Radio Andina at 1050,
 with like kind music, many IDs, SS, no problem copy...6045 Radio Santa Rosa at 1100 with
 Andean music, several SS IDs. (Credit last two items to Bob Zilmer, also)
RWANDA 15410 DW noted 1215 in EE to Africa, 4/12, good lvl. (Glenn Hauser)
SUDAN After three previous efforts I got a QSL from Radio Omdurman by enlisting the aid
 of an Arabian friend, who wrote a report for me in AA, in a friendly way. (Ken Earhart)
SWEDEN 6195 RS noted in EE at 0032, while monitoring for ANARC'S PRG. (Ken Earhart)
SWITZERLAND 3985 Berne heard with EE for Europe with S/on at 0700. This is abnormal re-
 ception for Melbourne - propagation via long path, first European I have heard at this
 time period on 75 MB. (Bob Padula)
TUNISIA 15225 Tunis noted amidst QRM from 1920 with indigenous endless, music-vocals,
 clear ID by man in language at 2003, in parallel with 11970. (Hadley Cress)
TURKEY Ankara, 11880/9515, observed with TT transmission in 0130-0300 period, either an
 earlier S/on, or possible special xmission, 4/12/ (Bob Padula)...11880 VoT heard irregularly
 in language at 0315, sometimes vry strong lvl. (August Balbi)...Ankara, VoT, lists under
 External Svc both 11880(250kw), and 9515(100kw); 11880 is listed #2200-0115*, seems to
 be a bit of confusion about the EE sked of the 31 MB outlet. (Charles Brunner) (I think
 that the outlets are parallels in this particular case, and run an identical EE schedule,
 that what checks indicate to me. Charles; Editor)
UPPER VOLTA Ouagadougou, 2305-2315, FF, an ID, Afro music, on 4815M. (Richard Schwartz)

(continued)

USA IMPORTANT: The National Bureau of Standards has been requesting people to write for their questionnaire concerning their services and conservation of energy, either operating at their current level, or at a cut back lvl. We need their services! Lets write for the survey form and express our views, to: U.S. Dept. of Commerce, National Bureau of Standards, Washington, D. C. 20234. (Arnold Lausovich)...(I probably should not make this statement, will get reprimanded for it, but while the NBS is seemingly considering measures to conserve energy the VOA flops big fat carriers on the air well in advance of their regular broadcasting schedule; also, leaves carriers on during long quiet periods, all consuming huge amounts of energy. Yes, I know that high power transmitters can't be put on the air and taken off, at short notice, any one that knows anything about transmitters knows that, but it seems to me that the exercising of the privilege is also wasting energy. VOA and NBS, I suggest, might get together, just my own opinion, nothing more, Editor) USSR Tashkent, UZBEK SSR, noted on 9540 at 1202 in EE; on 9600 at 1225, in EE, then into language. (Ken Earhart)

TOGO 5047 Lome noted at 0600-0715 in FF. Along with this one, some spectacular long-path signals are currently observed in Melbourne, in our late afternoons on the 60 MB, such as: 4940, Abidjan, 0700-0720, in FF; 4915, Accra, 0645-0715 in EE; 4910, Conakry, FF political speeches 0650-0705; 4850, Nouakchott, S/on 0658 in AA, to 0700 S/off; and, 4816, Ouagadougou, first time I ever heard this outlet via long path in our afternoon period, noted 0640 with FF language, African tunes. (Bob Padula)

GLANDESTINE 11695 From tuning at 1630 man in language; at 1645 chant type AA vocals; word, "Teheran" heard. At 1700, one bong, followed by possibly an ID. (Hadley Cress) (Hadley, this one is PeKy-e Iran, isn't it, Editor)

UNIDENTIFIED 3200 0313-0323 with nice instrumentals, no talk, QRN, fade-out. A harmonic? (Jerry Lineback)

RADIO CANADA SW CLUB under date of April 8, 1975, provides the following information: (quote) "Due to the fact that many listeners tend to confuse RCI with the CBC Northern Svc, and the Armed Forces Svc, we would like to mention that RCI will only verify its own transmissions, and not those of the other two services. All reception reports on transmission of these two sources should be directed to the service in question. Mailing address is the same as that of Radio Canada International....In the next few weeks RCI will be changing over to a new QSL card; This new card will mark a change in the type of QSL we use. The new card will not have the time, date, and freq of the transmission being verified. Reception reports will still have to contain all the information they have done up to now, however, as a result of this change in policy, program details contained in a reception report will take on considerably more importance than in the past. This will be the main factor in deciding whether or not a report is valid for a QSL card. This new card will remain in use until the end of the year"(end of quote).

AVAILABLE here at 420 Shelby for a long SASE are the following schedules: Radio Warsaw; Radio Canada; and, The Broadcasting Service of the Kingdom of Saudi Arabia. All these schedules are much too lengthy to be published in the Flashsheet.

SUN SPOT COUNT For those interested in the Sun Spot Count on a monthly basis, Friend Grady Ferguson provides the following information. Write: M. Waldmeier, Eidgenossische Sternwarte, ETH Zurich, Schmeizbergstrasse 25, CH - 8006 Zurich, Switzerland, inclose \$5.00 sum for the delivery of the bulletins to your door via airmail. (Grady Ferguson, So.Car.)

LATE LAST MINUTE FLASH COLOMBIA Via phone, just as we are closing this FS, Henry Lazarus, New Orleans, provides the additional information, though he is not quite sure of the slogan La Voz de los Centauros, the station on 5962; he states that the outlet is amning over the air as 5990 SW; and, 1140 MW; call letters HXKW, and, is asking frequently for reports. Is located, in fact, at Villavicencio, is running 5kW on SW. GLENN HAUSER, ENID, OKLA., I must ask that you publish in the next Flashsheet; (quote)

"I have assumed, perhaps unjustifiably, that like myself most other DXers are interested in having accurate information at hand. Thus, my attempts to make corrections where necessary. It is not my aim to hurt anybody's feelings. DXing is not exact, but can be made more so. I too make errors, and do my best to correct them, not just the errors of other people. At the risk of seeming 'constantly argumentive' (sic), as I have no personal stake in the outcome, I must point out the following facts about the conflict in New Zealand information. The schedule I gave was taken from more than one report by Arthur Cushman--often considered a reliable source. Al (Niblack) failed to publish the source of my information. Furthermore, the use of 11900 (and later 15280) instead of 17900 continues to be publicized, as on Radio Japan's DX program of 4/20. It is not unknown for a station itself to make a typographical error in its published schedules--or for it to make frequency changes after issuing a schedule. Thus I am at a loss to understand the tenacious adherence of some to the possibly inaccurate 17900 listing. I have tried and have not been able to hear NZBC at this hour on either frequency...I must insist that if you agree to publish the above (and I think you owe me that courtesy), that you publish it verbatim, without editing...."(Hauser)(end of quote).

ACKNOWLEDGEMENT to the following contributors, with THANKS: August Balbi, Calif; Bob Padula, AUSTRALIA; Ken Earhart, Pa; Bill Sparks, Calif; Jerry Lineback, Ill; Hadley Cress, Va; Bob Zilmer, Wisc; Richard Schwartz, Dela; Gerry Dexter, Don Jensen, via NU, Wisc; Jack Jones, Miss; Bob Hill, Jr., Calif; Neal Perdus, Tenn; Charles Brunner, Jr., Pa; Arnold Lausovich, Wisc; Glenn Hauser, Okla; Henry Lazarus, La; John Tuchocher, Wisc; Al Niblack Ind; Radio Canada SW Club...* Please note the new deadlines, 10th and 20th of each month, effective immediately.

To All.... Vy 73, AL NIBLACK

BEHR, Ernie, Ottawa, Ont., Canada (SPR4/SCR30)
BRUNNER, Charles H., Jr., Salford, PA (D7000Y)
CALLARMAN, John, Mt. Vernon, IL (HQ180/HQ160)
CHATLIM, Sheldon, W. Bloomfield, MI (DX160)
CRESS, Hadley D., Harrisonburg, VA (SX190/R4C)
DAVIS, Bill, Lagune Niguel, CA (Homebrew)
DAVIS, Jim, Travis AFB, CA (SX-99)
DICE, David, London, Ont., Canada (Hallicrafter S77A)
DORBERT, Bryan K., Baltimore, MD (S-38D)
DUKE, Kenneth M., Columbus, O (Hallicrafter R-274D)
EARHART, Kenneth A., Allentown, PA. (SX190/DX150A)
FIELD, Marlin A., Benton Harbor, MI (SX100)
HAUSER, Glenn, Enid, OK (HQ160)
HERSH, Daniel J., Hollsopple, PA (Sony tfm 8000w)
HILL, Bob, Berkeley, CA (R-390/R390A)
JONES, Jack R., Jackson, MS (DX150A)
KRAUSE, Greg, Thief River Falls, MINN (DX160)
LAUSEVICH, Arnold J., Milw, WI (DX150B)
LEGGE, Roger, McLean VA (Collins 5LJ)
LOVETT, Brandon, Coldwater, OH (DX150A)
McCARTHY, D.C., Terre Haute, IN (DX160/WR600W)
McCOY, Bob, Lincoln NE (DX150B)
McNEIL, Pitt, Washington, DC (DX160)
MacLEOD, R. A., Eric, PA
MARTIN, Keith, Peckville, PA
MAYER, Alan, Park Forest, IL (SB-310/DX150B/NC173)
MESEHAN, Jim, Berkeley, CA (SX190)
MILLER, Albert A., Jr., Youngstown, OH (HRO-500)
MORITZ, John, Jr., Youngstown, OH (DX160)
NEBRON, Larry, Daly City, CA (SX190)
PADULA, Bob, Surrey Hills, Victoria, Australia (Marconi CR100)
PATTERSON, Carroll R., Decatur, GA (SX99)
PERDUE, Neal, Millington, TN (SB-313/HA600/SW4A)
PINEAULT, André, Ancienne Lovette, Que., Canada (SX190)
ROBINS, Andrew, Kalamazoo, MI (R-388/URR;SP600)
RUSSELL, W. Keith, Urbana, IL (SX100)
SALMANN, Walter, West Hill, Ont., Canada (SX190/DX150A)
SCHWARTZ, Richard A., Dover, DE (SX190)
SCHWARZ, Karl, Fort Wayne, IN (DX150B)
SHART, Walt, Cinnaminson, NJ
SHINGLER, Dan, St. Clair Shores, MI (DX160)
SLAFF, Jerald, Brooklyn, NY (Hitachi portable)
SMITH, Myron, Spencerport, NY (NC-188)
SPARKS, Bill, San Francisco, CA (R390A)
SZOT, Kevin, Vacaville, CA (NC-183D/CRM-R6A)
TALBOT, Larry, Menomonee Falls, WI (SB-313)
THOMPSON, Glenn L., Deming, NM (HQ145A)
TROY, Jack, Richmond, VA
TUCHSCHERER, John, Neenah, WI (HQ100A)
WILLIS, Michael, Hampton, Victoria, Australia (Trio 9R59DE)
YOUNG, James W., Wrightwood, CA
ZILMER, Robert, Milwaukee, WI (SPR4)
NJ, Kenosha, WI
UADX, Piliyandala, Sir Lanka

Credits compiled by Reta Ferguson this month.

(OPTIONAL)

Mon., Aug. 25: Depending on the number of persons interested and cost factor of renting a bus, an all day tour to Radio Station CHU and R.C.I. monitoring post near Ottawa, Ont. will be arranged. The trip to Ottawa from Montreal is approx. 3 hours.

1975 ANARC Convention Committee- 5766 McAlear Ave-Montreal, Quebec-Canada
H4W 2H1 (1-514-486-9614)

Name: _____

Address: _____

I would like to reserve a hotel room:

___ Single ___ Double ___ Share a Double ___ Share a triple with two other
persons. ___ Triple.....Deposit* \$ _____

I plan to attend the banquet, and enclosed is payment _____: \$ _____

Enclosed is my registration fee.....: \$ _____

Date of Arrival _____ Date of Departure _____ Total: \$ _____

*The deposit is refundable only if the windsor can rent the room to someone else.

Make the checks payable to: 1975 ANARC Convention Committee.

Mode of transportation: Car _____ Train _____ Bus _____ Plane _____

