

FRIENDS

The SHORT WAVE BROADCAST Journal - Since 1962

DX & SWL NEWS

5-74



TOM MEYER OF RADIO NEDERLAND'S HAPPY STATION PROGRAM

DX FUNTAGE

What about 1975?

1973 was World DX Friendship Year. 1974 is World DX Handicapped Aid Year. So whither 1975? World Relay Station Year? Bring a Boy Scout Into The Hobby Year? Take A Verie-Signer To Lunch Year? At least 1988 ought to be an easy one to decide. And who decides these things anyway?

Riddle of the Month Department

What does Mrs. Thiele sing to her husband after he comes home from a hard day at DW? Give up? "Gigi".

Post Office Pointers

Beware of your friendly mailman.
He is a carrier!

Number One This Week

A recent survey shows that there are now 112 clubs and other organizations which

conduct short wave station popularity polls at one time or other throughout the year. Some clever soul has recently combined all of the totals of all the stations on all the polls, assigned a point system, and come up with an overall ranking of the station's popularity. That's nice, isn't it? But we'd be more interested in a poll of the polls to see which poll has the most pull!

Rumormongering

The DX hobby always seems to have its share of rumors and stories floating around in various circles. So we've taken the trouble to research some of the current ones just in case there might be some truth in at least one of them. Not so. We can now state with complete certainty that Victor Sylvester is not forming a rock band. Nor do you have to be concerned over the story that Radio Catchabachachacha has changed their QSL policy. They still don't have one. And no need to get excited about that possible new country. The BBC is not going to construct a relay station on Farasan Is. Hear it? Bet you can't even find it!

You're not likely to hear it on Turkish Radio-Television but...

Immense traffic jams causing incredible tie-ups of autos, buses, bikes and people have been plaguing downtown Ankara of late. And all due to problems with inoperative traffic lights. The situation has become so bad the Turkish Minister of the Interior has forbidden radio, TV or newspapers to make "light" of the situation.

You're not likely to hear anything on Radio Hong Kong but...you can't win 'em all!

We get...

This month's crop of letters includes one from the president of (another) new DX club. For no good reason, we'll forego our usual no-plug rule and mention this group. It's the North Appalachian DX Forum and Slamet Poedjono Fan Club. Dues are \$1.25 per year which includes a seven page monthly bulletin, membership card, autographed photo of Mr. P., QSL copying service and U.S. Postal booklet titled "International Mails". Good grief! He forgot to put his name and address on his letter!

Clipping
Corner

Rhyme Tyme

There was a DXer who streaked
Hoping his neighbors never peaked
To his mailbox he flew
But no veries new
Boy, was he mad.



SHORTWAVE CENTER



Edward C. Shaw
NASWA - WDX4EOV
621 Burleigh Avenue
Norfolk, Va. 23505 USA

REPORT FROM TOGO (Published with permission of Benelux DX Club- Holland)
by Henry Peters

DXers are often fascinated by the exotic signals coming from distant, often unknown countries. I have always taken a great interest in the African continent, its history, culture, peoples, their way of living and, not to forget, the wonderful native music so often heard when tuning to the tropical bands.

When I learned that a trip could be made to Togo, one of these exotic countries in west central Africa, I immediately decided to spend this years vacation with my radio in that (for me) unknown country. Togo is one of Africa's smaller countries and has a population of approximately two million; in the west it is bordered by Ghana, in the north by Upper Volta, on the east by Dahomey. Lome, the nation's capital, situated on the Atlantic Ocean, is a typical African style town and has 120,000 inhabitants. It is also home of Radiodiffusion du Togo, a station not unknown to most of you.

After a 7 hour flight via Europe, Algeria, Niger, Upper Volta and Dahomey, I arrived some months ago at Lome; the temperature, despite the early morning hour, was over 90°.

I was at once impressed by the magnificent landscape of thousands of coccotrees and the typical fisherman's huts I saw on my way to the hotel. The weeks that then followed were mostly spent on discovering this wonderful country with its picturesque towns and villages, to learn more about life there and to meet the people of this country, which, although poor in our eyes, are most friendly and helpful and enjoy their way of living in a way not known anymore by Europeans.

Of course, the necessary attention was paid to my radio receiver, since I wanted to know more about reception conditions and DX possibilities in this part of Africa. How disappointed I was when I noticed that a constant and terrible static noise, especially in the lower frequencies of the shortwave bands, spoiled reception. On the short wave bands, reception during daylight hours was best on the higher frequencies as the signals on the lower bands were weak due to absorption in the ionosphere. For this reason, many Africans change to higher outlets during daytime (Lome from 5047 to 7265) Dominating stations during daytime included Nigerians, Ghana, ELNA, RTV Congolaise, BBC Ascension Island, and RSA. ORTF and Deutsche Welle Kigali were also daytime regulars. During evening hours more stations, especially the interational ones, were picked up and, of course, the tropical bands were occupied by those exciting local Africans. I wanted to have a look behind the scenes of African broadcasting, and for this reason I decided to pay a visit to Radio Togo one morning.

I was told that the station was situated near the General Eyadema Stadium in western Lome. It was not difficult to find, and soon I was standing in front of a small broadcasting house. I entered the building and explained the reason of my visit to a very friendly young man who told me that the Director-General, with offices on the other side of the street, would certainly be happy to give me any information about broadcasting in Togo. So, I went across the street and indeed there was another small building where sounds of well-known African highlife tunes came out of an open window. (Next page, please)



REPORT FROM TOGO

Continued from front page

I was welcomed by the Secretary and within a few minutes was sitting in the office of Mr. Amouzougah, Radio Togo's Director-General. He appreciated my visit very much. During the hour that followed we had a most pleasant and interesting conversation about the station's past and present.

Radio Togo commenced broadcasting from a car with a 5 watt transmitter in 1953. By 1960, when Togo got its independence, the station was already operating on short wave and medium wave from the present studio buildings. Radio Togo can nowadays be heard via a 100 KW short wave transmitter using 5047 during the early mornings hours and evening hours, and on 7265 during daytime. Although the signal of the shortwave transmitter is directed north, reception of the station in northern Togo leaves much to be desired; and for this reason construction of a second transmitter center was completed near Lama-Kara, a town in northern Togo. I was told that transmission from this center were expected to start in November 1973 with a 10 KW shortwave frequency of 3222 kHz during morning and evening, and a 11960 kHz frequency during the afternoon. The 3222 kHz frequency was tested shortly on the Lome 100 KW transmitter. Reception reports of the new location at Lama-Kara will be welcomed. In addition, construction of a new modern broadcasting house has started and I was shown a model, which really looked great.

Radio Togo makes grateful use of transcriptions sent by various foreign stations such as Radio Canada, Kol Israel, Radio Moscow and Radio Nederland. Most of the recorded music is acquired from ORTF, which regularly sends a list of available records to French speaking African stations; however, I noticed that these records were not too cheap. All employees are Togolese, and no assistance is from abroad.

I asked why Togo shut transmission part of the day, and I was told for financial reasons; the station does not have enough money for a full day of programming. Sunday is the only day without interruption of services. Togo would like an external service when money is available. When the subject of reception reports was discussed, Mr. Amouzougah said that IRC's were not really necessary, but they would be much appreciated in light of the financial situation. All reception reports are checked by the Engineering Dept.

After a long talk, I visited some of the studios with the secretary. Most of the equipment appeared to be Telefunken. In the afternoon hours I left the station, knowing that back home I would always listen with more interest when hearing, "Ici Lome, Radiodiffusion du Togo, La Voix de la Nouvelle Marche."

A DXer VISITS MALAYSIA - Part II Conclusion from April by Bob Padula

For greater coverage in the outlying regions of Malaysia, extensive use is made of the 49, 41, and 31 meter bands, for daytime services of 1,000 miles or greater. Right throughout the Malay peninsula, the daytime reception pattern was quite consistent on my newly acquired portable receiver. The 49m band yielded several choice Malay, Singapore, Thai, Cambodian, Viet, and Indonesian loggings. 41 and 31 meters produced these in addition to Brunei Sarawak and Burma. All these were in the general period of 2200-0500 GMT, which is daytime for this area. In the evenings on 60m, strongest signals were those of Sabah, Brunei, Sarawak, Cambodia, Vietnam, Thailand, Burma, and many Indonesians.

As late as 0200 GMT, such internationals as the VOA from Woofferton and Kavala on 41 meters could be heard on TOP of local stations in Kuala Lumpur and Singapore on the same frequencies! At this time, hosts of Indonesians were audible with morning services. No listening was attempted after 10 p.m. or before 7 a.m. as I shared a room with a guy knowing nothing about DXing.

Unfortunately, I was unable to visit any broadcasters, though my schedule did take us past these facilities and I saw Radio Malaysia's antenna farm at Kajang which consisted of several curtains and a log periodic unit.

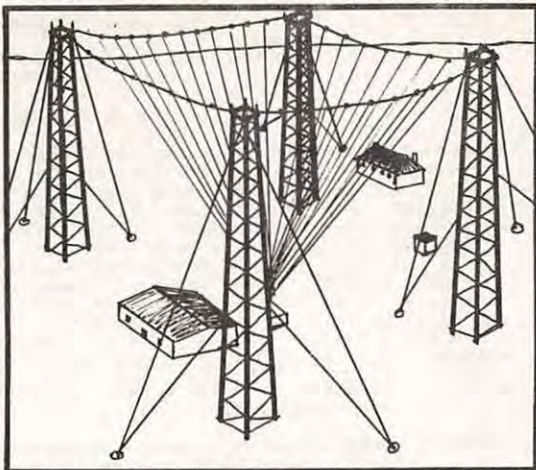
Attempting to determine the overall reception and propagation patterns in a time zone which is 3½ hrs different from which I was accustomed was difficult and confusing. The situation was complicated by the need to forget all about the normal propagational patterns so familiar to me for Australia. However, as the holiday was not intended to be a full-size DX-pedition, I was reasonably happy at being able to make observations told herein, and I hope that the information may be of some general use to those reading this account of a DXer wandering in the orient. 73, Bob Padula



RADIO STATION WCC,
Cape Cod, Massachusetts

by George Schnabel

(Drawing to right is a very crude attempt by the editor to illustrate how Marconi's radio station looked in late 1902. Photo cut at top is road sign nearby, still in use to this day.)



On the eroding Cape Cod seashore near Wellfleet stands the crumbling remains of the first transatlantic wireless station.

In January 1901, Guglielmo Marconi explored Cape Cod and settled on this site near Wellfleet, Massachusetts where the cape narrows to just slightly over a mile. Here are high bluffs, unobstructed sea, and supplies could be landed from ships on the bay side and be hauled only a short distance overland to the site.

After delays and disasters in February 1902, work commenced on the construction of four 250 foot timber towers, solidly anchored on concrete bases. At the heart of the rig was a three foot whirling spark-gap rotor, a spinning disc with 240 metal studs that discharged their sparks across a stationary gap 240 times a second, producing a nearly continuous wave source. It provided 2200 volts that were then stepped up to 25,000 volts by a huge Tesla transformer. The circuit was designed to produce a wavelength in the range of 1500 to 1800 meters with around 30 KW of power. Until the tuner could be perfected, the broadcast frequency had a tendency to wander, causing interference with other transmitters. When the station first went on the air, a perspiring operator working a huge key called a 'pump handle' could send at the rate of seventeen words per minute.

By December 1902, the station was ready for operation. On January 15th, Marconi arrived carrying a message in his pocket that was intended to be transmitted to a relay station at Glace Bay, Newfoundland and from there to be retransmitted to the receiving station at Poldhu, Cornwall, England. On January 18th, 1903 the message was consigned to the ether. To everyone's immense elation, confirmation came back that the message had been picked up directly at Poldhu in England. For the first time the United States had been linked with England by wireless.

The station settled down to transmitting news and private messages to ships at sea. News was received by direct telegraph line from the New York Times via South Wellfleet and thence by sand-dune line to the station. There the words were transferred to tape, hand carried down to the operator's room and sent out by automatic apparatus from 10 p.m. to 2 a.m. EST. Private messages could be sent for 50¢ a word.

The Marconi spark-gap transmitter operated successfully until 1917 when three unrelated factors resulted in dismantling the equipment about 1920: a) censorship imposed by World War I, b) Erosion of the sea bank endangering the two outermost towers, and c) Lee DeForest's invention of the vacuum tube which made spark-gap transmission obsolete. In 1921 the towers were cut down, the machinery scrapped and the buildings left abandoned.

All that's left today are remains of the transmitter house base, part of the corridor which connected the transmitter with the power house, and two tower bases. Two other tower bases are now down on the beach, 100 feet below where storms and wind may occasionally remove the sand covering them.

EXCLUSIVE I

JIM VASTENHOUD

EXCLUSIVE I

DEPUTY-DIRECTOR, ENGINEERING SERVICES
RADIO NEDERLANDby
Serge Neumann

(Foreword: Serge Neuman - longtime member of NASWA, and formerly of Radio Nederland's DX Juke Box Program has recently returned home to the U.S. and anticipates taking a position with a southern Michigan TV station in the near future. Taking advantage of Serge's position with Radio Nederland provides for NASWA some first-rate first-hand interviews with two of the people who have done much for the SWL community. In this first of two interviews, Serge introduces Jim Vastenhoud - probably one of the best known, and favorite, radio engineers known to our hobby. Next month, Serge will interview the host of "Happy Station", Tom Meyer - Editor)

NEUMANN: How did you first become involve with internation broadcasting?

V'HOUD: It was back in 1953, when I joined Radio Nederland as a sound engineer.

NEUMANN: Well, since 1953, what changes in internatbnal broadcasting would you consider as "most significant?"

V'HOUD: Two things...(a) the "article ten" procedure, introduced in 1959 in Geneva, has prevented a threatening chaos in the shortwave bands, and (b) the gradual increase of band usage for short wave broadcasting has prompted stations either to start "out of band" broadcasts or to increase power.

NEUMANN: What will this bring? What about the future?

V'HOUD: This process will continue as long as no other means of direct, personal means of communication becomes available. For the foreseeable future, which means in the next 10 to 15 years, I see no replacement for shortwave, at least not for the majority of the world's population.

NEUMANN: DX Juke Box is perhaps the most successful of the DX programs on the air today. Was it your idea?

V'HOUD: No, it was Harry van Gelder's idea. It started in September 1958 as a five-minute DX report. It attracted so much interest that we decided to extend it to 30, and later to 35 minutes. The program formula (i.e. speech-music ratio; DX news, new product reviews, etc) was gradually developed.

NEUMANN: As a DXer yourself, you must have felt a need for such a program to be created. In this regard, what areas should a DX program attempt to cover?

V'HOUD: We felt that DXers need not only DX news (which they can read in DX magazines such as FRENDX) but also information about equipment operation and improvement, and even general electronic information if interesting enough. As well, the listeners' technical service by mail and on the air was gradually improved.

NEUMANN: How has DX Juke Box changed over the years?

V'HOUD: We have become more professional, thanks to contacts with DXers and their remarks and suggestions. We have introduced (written) technical courses on subjects of interest to DXers, but also for everyone interested in radio broadcast at the international level. Ideas for improvements, using different voices, shorter items, more interviews and contributions from abroad, etc., have largely come from Harry. He has shaped the program; I have contributed with articles, information, and answers for listeners.

NASWA INTERVIEWS JIM VASTENHOUD (Cont'd)

- NEUMANN: As Deputy Director for Engineering Services, you have a close association with the relay stations, don't you?
- V'HOUD: The relay stations are in fact self-supporting, but there are are frequent contacts on technical matters.



L to R: Jim Vastenhou, Harry van Gelder of Radio Nederland's DX Juke Box - interviewed by Serge Neumann (R)

- NEUMANN: The Bonair relay in the Netherlands Antilles certainly has improved Radio Nederland's coverage of the western hemisphere and the Pacific, as many of our NASWA readers can attest. How is the planning of such a relay station carried out, and what was your part in the realization of the Bonaire relay?
- V'HOUD: A site is selected based on favorable (general) propagation conditions and with respect to the target areas. Plans for a relay station in the estern hemisphere had been exist-ent for more than ten years prior to establishment. Setting up and realizing a relay station demands considerable team work. I did not take part in the Bonaire relay because at that time I was with Dutch television.
- NEUMANN: Does Radio Nederland plan to add any other relay sites?
- V'HOUD: Not to my knowledge.
- NEUMANN: Radio Nederland has always shown a willingness to cooperate with other international broadcasters. Do you see a time when such cooperation will extend to the programing arena, with the exchange of programs such as Radio Canada and Deutsche Welle have been doing?
- V'HOUD: Broadcasting organizations must be flexible and survey all possible means of cooperation, as long as the identity of one's own station remains uncompromised.
- NEUMANN: In the technical field, do you anticipate any changes in transmission mode from the present 9 kHz AM bandwidth to a 4.5 kHz single side band mode?
- V'HOUD: For shortwave - not in the near future. There may be a chance for a change from a 5 kHz 'grid' to a 4 kHz one in the next HF spectrum ITU conference, expected for 1979. For medium wave, at least where Europe is concerned, 8 kHz bandwidth instead of a 9 kHz bandwidth may be realized. Side band is still out, because of the lack of tuning ease.

NASWA INTERVIEWS JIM VASTENHOUD (Conclusion)

NEUMANN: As we move closer to direct satellite broadcasting, do you foresee a switch from land-based broadcasting to a direct satellite-to-home international system?

V'HOUD: This is more a political than technical question. Technically, direct satellite reception could be possible within a few years. Practically, there will not be an efficient replacement for short wave within at least about 15 years.



Radio
Nederland's
modern
facilities
in
Hilversum
Holland

NEUMANN: As a shortwave DXer yourself, and authority on what makes a successful listener, what would you call the "weakest" part of most listeners' reception reports?

V'HOUD: Most questions we get deal with antenna problems. I feel however, that most receivers still lack the accurate frequency indication that is necessary to obtain a steady audience. Most reports are correct, but many lack the correct frequency. There are several reasons for writing. One is to acquire a QSL card; another is to discuss or comment on an item. If your intent is for only the card, make reports clear and concise - without superfluous information. Include date, time (GMT preferred), frequency, reception quality (in SIO or SINPO) and some program details, as well as therequest for a QSL. Naturally, we are always pleased to read listeners' reactions to programs.

NEUMANN: You're an author as well....

V'HOUD: Yes, I have written some books at the request of Philips. The first book was translated into English, French, Italian, and German. The second book - which I consider much better - has just become available in Dutch. Both books deal with the various aspects of short wave reception.

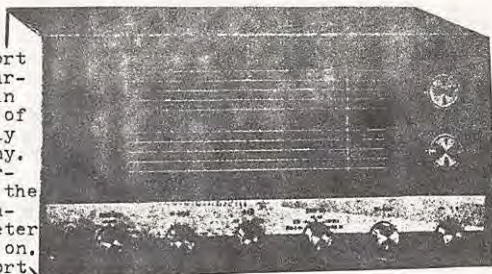
NEUMANN: Will this book be published in English as well?

V'HOUD: An English translation is under consideration. If it is produced, it will certainly become available to North American DXers, probably in the fall of 1974.

Thanks again, Serge, and we look forward to next month's visit with Tom Meyer. And, to you, Jim Vastenhou; here's to continued success.

NASWA MINI-REVIEW
LAFAYETTE HA-600A

Fewer and fewer suitable short wave receivers are on the market today than ever before in the past. There are plenty of short wave portables - mainly products of Japan and Germany. However, portables are inherently unsuitable because of the lack of frequency identification... it's difficult to determine what frequency you are on. One of the few remaining short wave receivers of adequate quality and bandwidth is the Lafayette Radio HA-600A



LAFAYETTE HA-600A

Older models of this receiver offered by Lafayette were called the HA-225. It was a tube model. Today's HA-600A is solid state with 10 transistors, eight diodes and two FET in the RF stages which give good sensitivity while rejecting noise.

The greatest feature about the HA-600A is the W-I-D-E bandwidth! Although the glass front on this model has calibrations for short wave ham bands only, this is not a problem. There are several ways to determine short wave broadcast frequencies with minimal practice. It is no trouble to provide frequency readings to within 5 kHz and sometimes closer on lower frequencies. It helps if you already own or can purchase a crystal calibrator to aid you. This receiver is Lafayette's competitor to Radio Shack's DX-160 receiver now on the market at a slightly higher price. The HA-600A sells for approximately \$125.00 and may be ordered from Lafayette Radio Corp. See any electronics magazine for a coupon to mail-in for Lafayette's 1974 catalog. Next month we will mini-feature the Allied DX-160.

ALL-WAVE ANAGRAM

The object is to unscramble the letters to form logical words befitting the DX hobby. Once the correct word is found for each scramble, use the circled letters to form another word to fit the clue below.

BOMRICH - 0 - - - - 0 - - -
CLAIRTOOLS - - - - 0 - 0 - - - -
ARABSPENDD - - - - 0 - - - - 0 -
DARNNEEDLES - - - - - - - - - - 0 -
FIGAND - - - - - - - - - - 0 -
CLONTREE 0 - - - - - - - - 0 -

CLUE: On the way to Mandalay, if you're from Dehli or Bombay

□ □ □ □ □ □ □ □ □ □

Answer will be found in June issue. for the propagation course excellence.

Plan NOW to attend the first annual NASWA Convention to be held in Columbus, Ohio. Contact Randy Minnehan, 975 Chestershire Road, in Columbus, OH, 43204...Meet all your DX friends and hear interesting speakers on subjects you like best. This convention promises to be the greatest gathering in recent years. Make it happen!! Send that letter today while you are thinking about it. See you there. Ed

- * RADIO NEDERLAND TECHNICAL INFO
- * RECEIVED FOR REFERENCE LIBRARY
- * Radio Nederland is known worldwide for its special rapport in the DX hobby, and also for the special information sheets covering many technical topics such as antennas, Q-multipliers, and tuners. Many of these were prepared by Jim Vastenhou, interviewed elsewhere in this issue.
- * In a recent letter from Harry van Gelder, NASWA was reassured of Radio Nederland's continued support and interest. In addition, NASWA will receive a complete set of all technical topic sheets and pamphlets as well as a copy of all the technical courses.
- * NASWA will review some of these courses in a future issue of SWC. Your editor can vouch personally for the propagation course excellence.

ALLIED SX-190

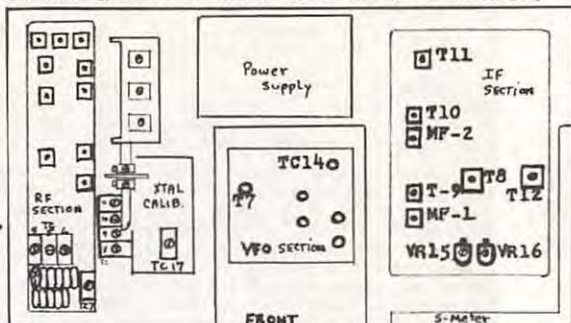
by Ed Shaw

WORK SHOP - Some useful guidance to upgrading of your SX-190 RECEIVER

By fair, one of the most popular receivers ever used in the SWL hobby is the Allied SX-190. Despite some of the problem in earlier receivers and the subsequent discontinuation of the model, the SX-190 still remains one of the best values on the market, although only used receivers can now be found.

This article is intended to aid those owners of SX-190 receivers with problems they have encountered. Typical of the problems brought to my attention are poor main tuning dial calibration, malfunction of the Q-multiplier controls, and cross-modulation (ghost) signals cropping up in the high ends of the 31m and 49m bands. Here is some advice on these three areas of concern.

For reference, the illustration to the right shows the interior of the SX-190 with cover removed, front side toward the operator. The far left side is the RF section where extra crystals may be installed. The middle section with the holes is the VFO section. The fair right side is the IF section. In this article, we are going to perform some minor tuning adjustments in the VFO section and the IF section. Read carefully.



MAIN DIAL CALIBRATION: This problem can be remedied to some satisfaction, but some special tuning tools will have to be purchased. You will need a set of plastic radio/TV tuning tools, available from Radio Shack or other electronic supply stores for about \$2.00. From this set of tools, we will be using the plastic screw driver and one of the hexagonal-tipped tools - correct size to be easily apparent when you start. We are concerned with the center VFO section. It has the appearance of a metal box with a screwed-down metal plate on top and having holes in it. Examine the illustration above. Note that the extreme left hole is designated T-7 and the extreme upper-right hole is designated TC-14. The left hole is centered over a ferrite slug-tuned coil which is adjusted with the hexagonal-tipped plastic tool (experiment to find which tip will fit the slug). NOTE: Before we go further, it may be that a pocket size pen flashlight will aid you in seeing into the VFO cover holes in order to place your plastic tool correctly. The upper-right hole is centered over a trimmer condenser which is tuned with the plastic screwdriver. Now we are ready to begin. The following instructions are paraphrased from the official SX-190 technical manual, and only minor editing was used for this article.

- (1) Receiver should be warmed up 30 minutes before beginning work.
- (2) Connect your antenna.
- (3) Control settings: RF gain full clockwise; AF gain adjusted to comfortable volume; Band selector on 15 MHz; Function switch on "AM"; Q-multiplier-off.
- (4) Tune main dial to receive WWV signal on 15 MHz. Normally, it will be at zero on your main dial.
- (5) If it is not on zero, adjust the TC-14 (upper right hole) in the VFO until WWV signal centers on "0".
- (6) Remove antenna, no longer needed. Push 100 kHz crystal calibrator button. If S-meter is too far to right, back off RF gain slightly until needle indicates S-6.
- (7) Tune main control dial to 400 and search for calibrator signal. If not exactly on 400, adjust the T-7 (left hole) in VFO box until calibrator signal centers on 400.
- (8) Tune main control dial back to zero - calibration possibly will be off-center again. Readjust TC-14 until calibrator signal centers on zero.
- (9) Repeat step (7), then step (8), then step (7), etc. until the calibrator signal remains centered correctly at the zero and 400 marker spots. NOTE: Remember that the T-7 adjustment is ONLY for the 400 marker spot, and the TC-14 adjustment is ONLY for the zero marker spot. If you confuse the two, erroneous adjustment will result and you will have to start all over again.

SX-190 WORKSHOP

PART II

by Ed Shaw

Q-MULTIPLIER ALIGNMENT: We are now concerned with two small variable resistors on the right side of your receiver's interior circuit board. These are identical components located immediately behind the S-meter. They appear as two side-by-side semi-circles in the illustration as VR-15 and VR-16.

- (1) Control settings: RF gain full clockwise; AF gain full counter-clockwise; Function switch on "A"; Calibrator - 100 kHz on.
- (2) Put Q-multiplier switch to "Reject" position.
- (3) Adjust VR-15 (nearest center of the receiver) until minimum reading is obtained on the S-meter.
- (4) Put Q-multiplier switch to "Select" position.
- (5) Adjust VR-16 until highest S-meter reading is obtained. Readjust RF gain knob until needle drops to S-3 or S-4.
- (6) Leave switch in "Select". Adjust tuning knob left and right to observe whether there is any squeal. If no squeal, Q-multiplier is adjusted. If squeal is noted, readjust VR-16 to slightly less S-meter reading until squeal disappears when tuning knob is twisted left and right.

PART III

CROSS-MODULATION ON 31m AND 49m BANDS (ghost signals)

- (1) No work need be performed inside the receiver, so cover may be replaced.
- (2) Control settings: Band selector for 5.7 mHz; RF gain full counter-clockwise; AF gain full clockwise (the is exactly backwards from the recommendation of the owner's manual)...we want the RF all the way down and the AF all the way up.
- (3) Examine the upper range of the 5.7 mHz (49m band) crystal to observe for ghost cross-modulation signals. Sparing use of the RF gain control used as a volume control will greatly reduce overloading of the preselector and provide better quality reception with less cross-modulation.
- (4) This method should be also used on the 31m (9.5 mHz) band. In fact, the method is successfully used on all bands, but in the SX-190 it seems to be necessary only on the 49m and 31m bands. The author uses the reverse RF/AF control method at all times.

I hope that the treatment I have described in the foregoing pages will be of use to the SX-190 owners. All questions about the SX-190 are welcomed. I will try to answer all inquiries about this receiver and will research a satisfactory reply for you. Simply provide me your question with a self-addressed and stamped envelope. Send to Ed Shaw in care of the SWC address, front page.

IRC's: A Help or Hindrance?

by Perry Ferrell

International Reply Coupons are useful, but can be a source of vexation if not used properly. GILFER Associates reports numbers of these IRCs received without the originating post office's stamp on the upper circle. In these cases, the post office will not honor the IRC, assuming them to be bogus or otherwise unredeemable for some reason. Insure that the IRC's you purchase are stamped properly at the post office before you leave the building.

Ed note: U. S. Postal Manua, article 21.3,(4), Title 39 of the Federal register states in part, that the post office may honor improperly stamped IRCs if there is no apparent reason to suspect fraud. But, Perry's advice is sound. Don't take the chance - make sure that your IRC's are properly stamped. And, in case you haven't found out yet, they are 26c each.

Last reminder!!! Next month- - - in Columbus, Ohio at the Neil House - - - - NASWA's first annual convention. If you have not made final plans to attend, please do so NOW. Come visit with all the other fellow members of NASWA. This convention promises to be a block-buster! Remember, July 19-20- and 21.



CLANDESTINE

BULLETIN

Larry Magne, 1315 Pine Street, Philadelphia PA 19107 USA, Tel. 215-545-7699

KURDS REBEL

RADIO ON FOUR FREQUENCIES

Pro-western Iraqi Kurdish rebels, headed by the elderly Gen. Mustafa al-Barzani and reportedly aided by Iran, Israel and the United States, moved closer to complete breakoff from the pro-Soviet Baghdad administration in recent weeks.

The last official links between Baghdad and Barzani's Kurdistan Democratic Party were severed about April 7, when the five KDP representatives serving as ministers to the Baghdad Government were dismissed.

This was announced by Baghdad Radio shortly after Iraqi military reserves had been called up to deal with the worsening situation in the Kurdish-held northern part of Iraq.

Announcements from the Barzani camp, headquartered in the mountains of Buwandiz, have been made public primarily through the clandestine radio, "Voice of Kurdistan", although a couple of reporters have managed to report from Buwandiz directly for the benefit of the Western press (see insert, next page).

The IBA's Fred Stockheim, one of the Middle East's finest radio engineers, reported in a cable from Jerusalem that the Voice of Kurdistan is traced weakly from 1700 s/m to about 2200 s/off on 1200, 1500, 1579 and 3333 kHz in Kurdish, Farsi and Arabic. Jamming was not mentioned.

Although the location of the station is as yet not known, press representatives on the scene at Buwandiz make no mention of having seen or visited the operation, which suggests it is actually elsewhere, perhaps near the border in Iran.

With the present schedule, it is un-

likely that North American listeners will be able to trace the Voice of Kurdistan. However, in the event of all-out hostilities the schedule could be expanded.

Listeners in Europe should have at least some chance of hearing it, however.

The contributors to this article were Messrs. Fred Stockheim, Myron Reamy, and Alvin Sizor.

LATE INFORMATION -- See p. CB-4.

THAILAND

There are signs of strain in relations between the Thai Patriotic Front (TPF) and China following Peking's recent overtures to Bangkok. Although the TPF's clandestine radio "Voice of the People of Thailand" welcomed China's decision to supply Thailand with diesel oil as proof of Chinese goodwill towards the Thai people, it has been conspicuously silent about moves to normalise relations between the two countries. But on January 23, just after Bangkok announced that Defence Minister Air Chief Marshal Dawee Chulalasya had been invited to visit Peking, the guerrilla radio denounced Dawee as "the chief United States lackey" who had been trying to play down American Central Intelligence Agency (CIA) involvement in the country. Observers felt it was more than just coincidence that the TPF chose this moment to attack Dawee by name, while its tirade against CIA operations in Thailand had been continuing for a month. And it added weight to the theory that the TPF's radio is operated not out of Yunnan, in China, but from northeast Laos.

FAR EASTERN ECONOMIC REVIEW

...via Lars Rydén

Kurdish Leader Looks to West for Support

The following dispatch was written from behind Kurdish lines in Iraq by Gwynne Roberts, a former Reuters correspondent, who is now a freelance reporter.

Special to The New York Times

KURDISH HEADQUARTERS, Iraq, March 29—Gen. Mustafa al-Barzani, the Kurdish leader, said today that there was "a strong possibility" of war between the Kurds and the Iraqi Government and appealed for support from the West, suggesting that oil might be the reward.

In a midnight interview in his mountain retreat in northern Iraq, the 74-year-old general said that the Kurds had tried their best to muster international support but had so far failed to find any aid that was "serious, large-scale or solid."

"Kurdistan has become an important factor in the military and political equation of the Middle East," he asserted. "It is the duty of the Western governments to advise us of the role it should play."

Western Support Preferred
He said that the Kurdistan Democratic party was prepared to accept aid "from any place to remove the persecution of the Kurdish people," adding, however, that he would prefer support from the West.

Asked if he would accept arms from Israel, the general replied: "If Western govern-

Blockade Imposed

Iraq has now imposed an economic blockade on supplies that had been allowed through to the northern Iraqi mountain regions that are controlled by the Kurdish guerrilla army.

The guerrillas' headquarters are surrounded by peaks. Over the last week, there have been heavy rain and low clouds that would have made any airborne assault difficult and hazardous.

In a broadcast over the Kurds' clandestine Radio Kurdistan, General Barzani urged Baghdad tonight to review its policies to avoid plunging Iraq into catastrophe.

Oil is at the heart of the dispute between the Baathist-dominated Iraqi Government and the Kurds, who are demanding autonomy and a share of national spending proportional to their population. The Kurds say they number a quarter to a third of Iraq's 10 million people, and want a share between 20 and 25 per cent of Iraq's 1974 budget. To date, their party says, it has never received more than 10 to 12 per cent.

Oil Revenues the Source

The budget draws heavily on Iraq's big oil revenues, which are based mainly on the petroleum produced in the oil fields of the north around Kirkuk. This area also figures in the dispute.

"Kirkuk is Kurdistan," General Barzani said. "We have told the Government that many times."

"We have also said that all oil revenues should go to the Government," he added. "We want a percentage of the revenue from all Iraq for the Kurdish people, not only oil but the revenue from everything."

The general, who says that it would be in the interests of the West to back the Kurds, not the Iraqi Arabs, has reportedly asserted that he was willing to allow foreign oil concerns into the country to exploit Iraqi oil resources in northern Iraq, which are not nationalized. He did not recant that statement during the interview.

"There is justice in the world," he said. "There is also interest and persecution. Our share has been persecution. We are demanding justice. I think the Western interests are with us, not the other side."

Asked whether his forces, called Pesh Merga, would consider attacking Iraqi oil installations in Kirkuk in the event of war, he replied: "If war breaks out, there are possibilities. We should use them."

He said that Iraqi Kurdistan was planning to proclaim autonomy unilaterally within Iraq and might take more drastic measures if the situation with Baghdad deteriorated. The Government announced this week it was going ahead with its own version of self-rule for the Kurds, with formation of an 80-man legislative body in Erbil, northern Iraq.

The general dismissed this as "fake autonomy" and "totally unacceptable. The Kurds say that it falls far short of the March, 1970, agreement signed by General Barzani and Vice President Saddam Hussein, and that the Government is offering no more than decentralization with limited control over even local affairs.

The Kurds, he said, will make an official proclamation if the Government refuses to concede them autonomy. Already they have set up nine "administrations" with portfolios, including finance, justice, the army and internal affairs.

Tens of thousands of Kurds—their number is estimated here at about 100,000—have flocked to the rugged mountains of Iraqi Kurdistan that are held by the general's 40,000-man army. They are coming from the Kurdish towns of Erbil, Sulaimaniya, Mosul and Dahuk, on foot and by mule. Among them are doctors, engineers, students, university professors, army and police officers. Forty Moslem priests also announced in Sulaimaniya they would join the Kurdish movement with 230 students from a religious college there.

"What the Baathists have done is really stupid," General Barzani said. "Kurds ran out of the cities to fight for their rights. The whole Kurdish people is ready to make sacrifices for real autonomy."

The Pesh Merga—the term means facing death at the front—are now said to control a border of about 450 miles, including all of the Iraqi-Turkish frontier and a 250-mile stretch of the frontier with Iran.

Government troops have withdrawn from exposed positions to consolidate a defensive line from Mosul to Kirkuk and Sulaimaniya, facing the Kurdish hills.

Since the government's 15-day deadline given the Kurds to accept Baghdad's autonomy plan expired on March 26, there have been outbursts of fighting between Government and Kurdish troops. In a clash earlier this week on Safwan Mountain, northeast of Erbil, according to Pesh Merga officials here, 10 Government soldiers and one of their own were killed in an unsuccessful attack by Government forces on a strategic Kurdish position.

Antiaircraft batteries are on constant alert and strategically placed around the mountain slopes here manned by 10-man crews. Military vehicles have toured the district, their occupants warning Kurds not to store gasoline in their homes because of the danger of bombing.

Schoolchildren are being taught elementary first aid. The children will be used to run guns and food to the Pesh Merga, in the event of war. They are also receiving lessons on "how to recognize spies" and "how to extinguish fires." "If we see a paratrooper in the sky,

we will try and shoot him if we have a gun," said a 17-year-old boy. Cars, jeeps and bigger vehicles are being camouflaged with mud and netting, and from time to time the silence of the valley is broken by the thud of antiaircraft guns—the Kurds are practicing their marksmanship.

The general is constantly on the move and wary of assassination. There were attempts on his life in 1971 and 1972. His personal office is some distance from his headquarters. To reach him, one must negotiate five heavily guarded checkpoints and run a gauntlet of armed and suspicious tribesmen.



Transworld Features
Gen. Mustafa al-Barzani



The New York Times/April 1, 1974
Area around Kirkuk is at center of Kurdish dispute.

ments advise us to do it, we will. A drowning man stretches his hand for everything, whether a stone, a piece of wood or a piece of grass."

A senior party source told this correspondent the Kurds had established indirect contacts with Israel and were receiving limited financial support from her through intermediary organizations in Europe. The general was asked about contacts with the Israelis. "Israel," he said, "is only three million people, surrounded by 120 million Arabs. It's finding it difficult to help itself."

Iran has been helping the Kurds quietly with supplies and provisions. "We have been teaching Kurdistan across the Syrian and Turkish borders.

SOVIETS STEP UP ANTI-MAO BLACK PROPAGANDA BROADCASTS

Monitors: Hiroyuki Nagase & Isao Ugusa, Tokyo

Not only has there been a hardening of the Chinese line towards the "imperialists" (i.e., the United States) as of late, complete with only slightly-veiled denunciations of the Philadelphia Orchestra's visit earlier to China, but also there has been an escalation against the Evil of Evils, "revisionism".

In practice, this is viewed as the restoration of capitalism as practiced by nominal Communists under various guises, e.g. liberalism. In foreign policy, it simply means the Soviet Union.

At present this struggle between the Chinese and Soviet outlooks is most visibly evident in the United Nations, where the Chinese have reserved their most biting rhetoric for their former friend and ally, the USSR.

The Soviets are fighting their own battle with the Chinese in a less-publicized manner; it involves radio, clandestine radio; and specifically that type of broadcast known as "black propaganda".

What the Russians do is to set up broadcasting operations in the Asian RSFSR and air the program material in Chinese in such a way so as to leave little doubt in the mind of the average Chinese listener that it is an operation of anti-Maoist dissident forces within the People's Republic of China.

Usually the broadcasts pretend to represent anti-Mao dissident Chinese People's Liberation Forces groups. The broadcasts are brief, suggesting they are made "on the run", and there is nary a hint of their true character as KGB ruses.

During the 1966 Great Proletarian Cultural Revolution, these broadcasts blossomed under a variety of names. In one case exiled Chinese Communist dissidents were actually believed to be operating the station, albeit under the eye of the KGB. The broadcasts hailed Liu Shao-chi, the Chinese head of state deposed by Mao Tse-tung in 1966, as the proper ruler of China and condemned both Mao and his then-heir apparent, Lin Biao.

In fact, transcripts of these broadcasts tend to disprove the Chinese allegation of a conspiracy between Lin and the Kremlin.

In the past few years these broadcasts have dwindled somewhat. The Cultural Revolution was over, so it seemed, and the air was afresh with Henry Kissinger's globetrotting style of detente.

For whatever reason, the usual Western monitoring agencies, such as the BBC Monitoring Service and the FBIS, consider black propaganda clandestine radio stations outside their purview.

Perhaps it is viewed as a counterintelligence effort and reserved for those who operate such stations on "our side" (in the case of the US, this is almost exclusively in Indochina).

In any case, material is simply not available from professional sources. The only way the world can know of these operations is through the reports of DXers.

Two such DX monitors, Hiroyuki Nagase and Isao Ugusa of Tokyo, are among the foremost in this unusual field. For the past several months they have compiled data on the renewed anti-Mao black clandestines and now present the schedules they have worked up.

VOICE OF THE LIBERATION ARMY ("Chiehfang Chun Chih Sheng"): The most widely heard anti-Mao black clandestine operation during the Cultural Revolution, Voice of the Liberation Army has gradually, channel by channel, been reactivated since about early March, 1974. Reportedly operated by a group of anti-Mao dissidents who formerly were classmates at college in Moscow, this station, like virtually all others of its genre, is jammed. It now signs on and off with the "Internationale".

Program times vary, but usually are about 10 minutes per transmission.

0900 9660 kHz	1030 9660 kHz	1100 7165 kHz
1000 9660 kHz	1045 7185 kHz	1315 7165 kHz

RED ARMY RADIO STATION ("Hung Chung Kwangpo Tsan"): Reactivated early March, 1974, with programs of roughly 8 minutes length. The incomplete schedule includes:

1405 7190v kHz	1420 7190v kHz	1435 7190v kHz
----------------	----------------	----------------

Also watch for Red Army Radio Station on 7210-15v, 9600v, and 9715v.

PROLETARIAN BATTLE DIVISION ("Wuchanshe Zhandoushi"): Noted since April 5, 1974, this is explained by Mr. Nagase as the correct name for what was long reported as "Fighters". As such, it is a reactivation of a station widely heard in the past.

It signs on and off with the version of the "Internationale" played at sign-off on Radio Peking and which is available in China on a phonograph disc.

At sign-on the announcement is, "Qing shu-yi! Zhe-li shi Wu-chan-zhe Zhan-dou-shi. Jin-tien xiang quan-guo Ma-Lie-shu-yi...guang-bo" ("Please pay attention! This is Proletarian Battle Division. Today broadcasts for real Marxist-Leninists all over the country").

Program length varies, but each transmission is usually about 11 minutes in length.

0900	7290 kHz	1015	7165 kHz	1132	7525 kHz	1300	7290, 7525 kHz
0918	7290 kHz	1030	7165 kHz	1200	9605 kHz	1315	7290, 7525 kHz
0933	7290 kHz	1100	7525 kHz	1217	9605 kHz	1330	7290, 7525 kHz
1000	7165 kHz	1117	7525 kHz	1232	9605 kHz		

Frequencies may vary ± 5 kHz, e.g. 7520, 9600 kHz.

Other Soviet-based anti-Maoist black clandestines are in operation, including the medium-wave Radio Red Flag on 995 kHz (see September, 1973, Clandestine Bulletin, p. 5), plus "Sparks" is reportedly reactivated, although this has not been confirmed.

Virtually all the shortwave operations are audible from time-to-time in North America, the jammers notwithstanding. Naturally, none of the stations will verify reception reports.

Certainly students of Sino-Soviet affairs ought to be aware of these operations and include black clandestine radio transcripts in their source material. If they are not already being made available, perhaps arrangements can be made to provide them.

MORE ON KURDISTAN

(From p. CB-1)

Late word from the EBC Monitoring Service, based on data a few days more recent than that received earlier (see p. CB-1), lists different frequencies, plus a new, higher, shortwave frequency, which makes it more likely DXers can catch this timely guerrilla radio station.

As of April 6, 1974, the EBC MS gives the schedule as follows:
 1700-1900 Kurdish, Assyrian & Turkmen* 1191, 1535, 1620,
 1900-2000 Arabic 3600 & 6991 kHz

*1700-1900 Kurdish on Monday, Wednesday, Friday
 1700-1830 Kurdish on Saturday
 1830-1900 Assyrian on Monday & Friday
 1830-1900 Turkmen on Wednesday and Saturday

The EBC goes on to describe the history of the station, "Broadcasts from this station have been interrupted on several occasions for lengthy periods since it was first heard on 10th September, 1965. It ceased operating on 25th May 1966 and was not heard again until 25th November 1968. Transmissions then continued until 24th March 1970 when it was reported that the equipment had been dismantled and hidden. Previous broadcasts have been in Arabic, Kurdish, Turkmen and Assyrian using frequencies near 3.5 and 1.5 Mhz.

According to the latest information, the radio was officially re-opened on 29th March."

However, news reports from Beirut indicate the station was operating, officially or otherwise, from at least March 14, 1974.

6991 is a pretty clear channel, although the clandestine Voice of the Destiny of the Fatherland ("Samheng Vissna Meatho-phoume") is noted in Khmer around 6988v from 1000-1200.

A couple of tips for listeners.

First, the disparity between the information from Jerusalem, before the station was "officially" re-inaugurated, and that from Caversham Park suggests the channels used are subject to considerable change and addition. Tuning around the nominal channel by a wide margin may yield unexpected results.

Second, the schedule could be expanded if the conflict is stepped up, thus making propagation to North America a bit more likely. As it is it may be possible to hear 6991 kHz around the current sign-off at 2000.



The New York Times/April 13, 1974: Kurdish spokesman said the Iraqi base at Spilek had been blockaded.

CAMBODIA (continued from p. CB-5)

Thanks to sleuthing by Japanese DXers Isao Ugusa and Hiroyuki Nagase, these have been identified and their schedules established.

VOICE OF THE PEOPLE OF UNITED INDOCHINA

("Samheng Ruop Ruom Procheat Chon Indochen"): Possibly an independent operation of the Khmer Rouge, this station signs on and off with the "Internationale". Programs are of 15-20 minutes length and the program language is Khmer.

The schedule is 0000, 0030, 0300, 0330, 1500 & 1530 on 6803 kHz.

VOICE OF THE DESTINY OF THE FATHERLAND ("Samheng Vissna Meatho-phoume"):

A black clandestine operation of the Phnom-Penh government, this low-powered station operates from 1000-1100 and 1100-1200 (sometimes 1000-1200) on 6988v kHz. It has been traced in North America.

• INDOCHINA

RADIO MOTHER OF VIETNAM

Since late 1971 DXers have wondered about a Vietnamese-language station on several frequencies, e.g. 7462v, 9715, and 11655 kHz.

No country seemed to claim responsibility for the operation, yet its program content did not appear to be that of an outright clandestine.

Checks with South Vietnamese sources suggested that it was a quasi-clandestine operation operating from that country. Furthermore, one of the channels used, 655 kHz, was the former channel for the SVN "Voice of Freedom", listed by the FBIS as being in Hue and operated by the National Radio Broadcasting Office, i.e. the same outfit that runs all the SVN radio stations.

The sites are open to question, though, as the medium-wave channels are not in phase with the shortwave channels, even though they are carrying the same programming.

Obviously, tapes are used at different sites, which accounts for the minute or two lag.

The station is aimed at North Vietnamese soldiers, both in the DRVN (North) and in the southern portion. But for the curious over in this continent, it is audible on shortwave, primarily 7085 kHz, during the morning Asian opening. 7085 is weak, but clear, on the east coast, but along the Pacific Coast it is often readable, with its soothing music and soft-type female announcing.

Of course, Asian DXers hear it often, so it is appropriate that one of them, Hiroyuki Nagase of Tokyo, has compiled the complete schedule and operating details of Radio Mother of Vietnam.

According to a South Vietnamese student contact of his the Vietnamese name for the station is "Đài Mẹ Việt-Nam" and its theme song is "Heart of Mother", or "Lòng Mẹ" in Vietnamese.

The schedule is as follows:

For North Vietnam:
2350-1500 7085, 9810 kHz
1500-1800 655, 7085, 9810 kHz

For North Vietnamese soldiers located in South Vietnam:
2350-1800 570, 678 kHz (also reported on 677 kHz, presumably varying)

In Tokyo, according to Hiroyuki, all channels are receivable. However, the best channel is 570 kHz after 1630 GMT.

And according to Lars Ryden, also of Tokyo (but soon to move back to Stockholm), 655 is interfered with by Pyongyang, North Korea, on the same channel.

The station will not verify.

JAPANESE CREW VISITS RADIO PATHET LAO

According to the Pathet Lao publication, Laos News, and Hiroyuki Nagase of Japan, Nihon Television Company sent a delegation to visit the Pathet Lao-held portions of Laos, including Sam Neua.

The chief producer of the group, Mr. Kazuhiko Ishikawa, visited a number of operations including, it is alleged, Radio Pathet Lao.

According to the Japanese crew, Radio Pathet Lao is headed by Mr. Sisana Sisane, who is formally known as a Member of the LFP CC and Deputy Head of the Propaganda and Training Department of the LPFCC.

Mr. Sisane indicated the transmitters of Radio Pathet Lao are of 10 kw power each.

The implication of the report is that Radio Pathet Lao is in whole or in part located in Laos, rather than near Hanoi, as suggested by Western monitoring sources.

However, analysis of transmitter operations during and after the US bombing of the Voice of Vietnam complex in December of 1972 suggests that at least part of the operation is located in that field.

On the other hand, there have been reliable reports suggesting that one or more Radio Pathet Lao transmitters were seized from their enemies several years back.

So while the Laos News story may be plain propaganda, it may reflect the existence of at least one transmitter located in Laos.

Interestingly, the one transmitter known to have been seized by the Pathet Lao had a rated power of 10 kw.

The complete schedule of Radio Pathet Lao may be found in the December, 1973, edition of FRENDX, pp. CB 2-3.

*** CAMBODIA

Two fairly new clandestine operations in the Khmer language have appeared on the air recently. (continued on p. CB-4)



SURVEY RESULTS
SPOTLIGHT, PART VIII

Dan Jamison
210 Roanoke Street
Aparment 21
Richmond, Virginia
23225

Credits to the Spotlight go to DX'ers Al Sizer, Bill - Davis, and John Campbell; to "Numero Uno, SWBC Weekly", FRENEX, and observations by other DXers and ye ed.

Deadline: 15th

AFARS & ISSAS

* Probably one of the favorite radio stations of the French troops garrisoned at Djibouti is ORTF-Djibouti. This station is also a favorite of many DX'ers. ORTF-D is reported with a great degree of regularity on the African continent with an output of 4 KW. During normal operations, the station

signs off at 2000 on its 60 meter band frequency of 4780. The 2000 sign off time is too early for most NA areas. ORTF-D operates on an extended schedule during the Ramadan period until 2300. This is when DX'ers on ECNA and the Mid West have logged and QSL'd Djibouti. WCNA DX'ers may have periodic long path openings to East Africa around 1500, or so, when they might be able to pull in Djibouti. Loggings of ORTF-D after 2000 not during the Ramadan period are highly suspect. Beware of Mali in the neighborhood ... most recently traced on 4783. Good Luck! (DX'er Al Sizer, CT & ye ed.)

* WORLD MUSIC RADIO The Dutch government finally caught up with WMR in August, 1973. The station is now off the air, with no plans to return. For listeners who would like to hear a substitute Dutch pirate, ABC Europe operates regularly on Sundays from 0900 on either 6250 or 6252 (old WMR freq's) with professional WMR-style programming. Power should now be 100 watts. The address is Postbus 9363, Den Haag, Holland. Report with 3 IRC's are answered quickly with a pleasing blue card showing a map of Europe. (excellent John Dr. John Campbell, Switzerland)

* RADIO NORDSEE INTERNATIONAL The operation of RNI has been irregular lately; perhaps they are feeling nervous about the new Dutch law, in application from Jan. 1, 1974, which in effect forbids collaboration (e.g. commercials, supplies) with offshore pirates. The station is presently on 6210, with a service on most days corresponding to the hours of Dutch broadcasts given in WRTH 74, page 278. Only isolated programs are now in English. They seem to be using two powers or antenna alignments, and one of these gives very weak signals. The future of RNI is uncertain. Best time for American reception is probably 0500-0630 daily, although they are irregularly on in the European evenings too. According to some sources, The Swiss address of RNI is no longer in use. (Dr. John Campbell, Switz.)

* NORTH KOREA The interval signal of Radio Pyongyang is a short chime sequence which starts on the hour, plus or minus a few seconds. The usual sequence is two rounds of chimes, a man announcer, another two rounds of chimes, and a woman announcer. Then the man comes back and announces the target area, lists the frequencies and times for the daily service; then into "news" - which is almost always more commentary than news. Very little music is played on the International pgms. Sound quality is poor - typical for telephone type relays from the studio to the transmitter site. It does not bother the woman announcer too much, but makes the man very difficult to understand. On the West Coast, the strongest signal by far is provided by the 15630 KHz outlet at 2200 in Korean and at 2300 in English. Since all of their freq's are "out of band" - they are subject to a good deal of utility QRM. The 11535 freq is probably the worst from this standpoint. Following is a reception summary of Radio Pyongyang as monitored in southern Calif.

	GMT	15630	12075	11535	9820	9455	6576	4595
signal quality:	1500			FF-5	FF-3	RR-3		FF-3
1 = good	1600			FF-5	FF-3			FF-6
2 = good, ute QRM	1700		KK-5	RR-4		KK-5	RR-3	
3 = fair	1800		AA-5	KK-4		AA-5	KK-5	
4 = fair, ute QRM	1900		EE-5	RR-5		EE-5		
5 = poor, ute QRM,	2000		EE-5	FF-5		EE-6		
weak signal	2100		FF-3	EE-5			EE-6	
6 = very poor,	2200	KK-2	KK-2	EE-4				
weak signal	2300	EE-1	CC-2	EE-4	CC-5			

(DX'er Bill Davis, Calif. ... X'lent Bill)

The following outlets are for the home svc, PGM II; 2300, 2600, 2670, 2747, 2850, and 4273. At 1200 GMT, 2600 mixes with China's PLA outlet which goes til 1830 sign off. These outlets may be noted in NA during early morning hours (ed.). (vy interesting Victor, Victor Goonetilleke, Sri Lanka)

BURUNDI Radio Cordac, the missionary broadcasting station, has religious programs in EE, FF, and local lang's. The new freq in use is 3340; no times given. (Charlie Wootten, Morocco)

CAPE VERDE ISLANDS Radio Clube Cabo Verde operates also on 6025 with 500 watts daily from 0845-0945 and again at 1415-1615. (Charlie Wootten)

CHAD According to a QSL from RDF Nat'l Tchadienne, they are now using 6165 and 7120. It is assumed that 6165 must have replaced 4904.5 ...? The sked is fm 0430-0630, 1200-1600 on 7120, 1600-2230.
(Steve d'Adolf, ND)

CHILE The following information was published in the Santiago newspaper, "El Mercurio" on March 15, 1974: "The Radio Nacional de Chile broadcasts daily a news program called "La Voz de Chile" on shortwave in the following languages (as transmitted): Arabic, Russian, German, Italian, French, Engl, and Spanish. Time and frequency schedule: 2030 to 0500 GMT and 0900-1200 on 6190, 9510, 9590, and 15150." ... "La Voz de Chile" which is the name of Radio Nacional's program, should not be confused with the radio network of the same name ("Cadena Radial 'La Voz de Chile'") owned by the "Compania - Chilena de Comunicaciones, S.A.". Among the best known stations that belong to this network is R. Cooperative Vitalicia from Santiago which b/c's on 9689 KHz. (Dr. S.C. Baranovsky, OH) The station also asks for reports to LV de Chile, P.O. Box 244v, Santiago, Chile. (Al Sizer, CT; Richard Wood, Marlin Field, MI; Ken Earhart, PA; Ed Insinger, NJ)

ECUADOR HCJB, DX Party Line now has a new time for NA broadcast. Try now on Thursdays GMT at 0130. (many thanks Ross ... Ross Hynes, Novia Scotia)

GREAT BRITAIN The BEC NA svc in English fm 1500-1515 has changed 15160 to 15260. It is now free of interference (QRM), although XEWW Mexico City, 15160, has not been noted active since the oil crisis which has also caused cuts in power or operating hours of Mexico City AM stations (now largely restored, however). (Dr. Richard Wood, LA)

GREECE Listing a partial schedule fm Ethnikon Idryma Radiofonias Tileoraseos which uses 100 KW's fm Avlis, we note the following Greek transmissions:
to Spain & Portugal fm 1300-1350 on 15130 to Australia @ 2100-2150 7215
Europe 1900-1950 5960 Japan 2200-2250 6075
Azores 2000-2050 7295
From Thessaloniki, they b/c with 35 KW's to Europe in Greek @ 2000-2030-7280
(QSL Editor, Larry Yamron, PA)

BELGIUM RTV Belge via Jerry Stuart, Okla.

ENGLISH

To	Times (GMT)	kHz
North America	All days:	6.055
South America	22.55 - 23.15	
America	00.40 - 01.00	11.855

GUINEA REPUBLIC The Voice of the Revolution lists the following sked:
4910 @ 1230-0830
7125 1230-0830
9650 1600-0830
15310 1230-1600
11965 1230-0830
6390 1230-0830
(Tom Cwikla, CT)

GREENLAND Sometimes Grønlands Radio on 9575 and 11745 is covered by other stations (e.g. ORTF) from sign on at 1015, but these stations were absent at slightly earlier hours. So, it should be useful to say that the morning transmissions of GR on the days of principal religious festivals (e.g. - Easter) quite often open early, and play hymns during the early period. 0930 seems to be the favored opening time on these occasions. (Very interesting John, maybe the ANARC Freq Recommendation Committee now headed by Charlie Wootten will talk to GR about the possibilities of signing on earlier, on a permanent basis - DJ. ...Dr. John Campbell, Switz.)

ISRAEL A new freq for the IBA is 7395, which provides best reception of all here. Noted during RR 0345-0412, EE 0500-0515, and FF 0515-0530. 9009 and others are in parallel. (Dr. Richard Wood, LA)

JAPAN Radio Japan changes effective April 1: Asian Continent Svc No. 3 retimed fm old 1130-1215 to new 0900-0945. 6080 changed to new 9675. The Asian Cont. Svc No. 4 has the same change. European Svc No. 2 retimed fm 1930-2100 to new 1800-1930 and lang's reordered to GG, EE, & RR (30 min's each). Middle East and North Afr Svc retimed fm 1745-1915 to new 1800-1930. In Eur Svc, 9700 replaces 9735. In ME svc, 11705 and 9700 replace 11965 and 9670. SEA Svc No. 1 is shortened fm 1000-1115 to 1000-1045 and Viet is deleted; now Chinese only. SEA Svc No. 4 is introduced: 0430-0500 on 17725, 15410, and 15195 in Vietnamese. (very gud Richard...Richard Wood, LA)

KAZHAK SSR Alma Ata was noted on 9380 at 0125 in Russian with a piano music instruction pgm. (Charlie Wootten, Morocco)

MALAYSIA ... Sabah is now on 15295, since Kula Lumpur vacated 15295. Sabah is best heard at 1530 opening with Arabic, til 1630. (Victor Goonetilleke)

NEPAL Radio Nepal's latest schedule is fm 0020-0350, 1150-1720 on the 100 KW outlet of 3425 and also on the 5 KW'er on 5007, operates fm 1435-1520. The Overseas Svc has English news at 1450. (DX'er Victor Goonetilleke, S.L.)

NIGERIA QSL Editor Larry Yamron, PA, notes that EE is b/c fm the Voice of Nigeria at 0530-0735 on 15185, 7255, 11900
1530-1700 7275, 15185, 15120
1800-1930 15120, 7275, 11770

PHILIPPINES Radio SEARV was noted signing off at 2303 on 9720 with the ancmt, "this is the Radio Voice of South East Asia. This has been a pgm for Chinese listeners of the Christian faith, and will resume in 30 minutes on 15145 KHz." So besides 9720, try 15145 around 2345 til around 0030 for this not-so-often-reported Asian voice. (Charlie Wootten, Morocco)

PHILIPPINES FEBC has English to South Asia at 2330-0100 on 11855; fm 0100-0600 on 15440, 17810, 21515; and fm 1238-1630 on 15440.
(DX'ers Victor Goonetilleke, Sri Lanka)

QATAR Sign on now for the QBS is at 0255; half an hour later than sked'ld in other various sources. They b/c fm 0255-0600. (DX'er Victor Goonetilleke)

SENEGAL Dakar on 11895 is active mornings again, noted signing on at 0600 with "Chaine Internationale" in French; and til s/off 2400. (DX'er R. Wood)

PORTUGAL Thanks goes out to Ed Insinger, NJ and Jerry Stuart, OK for the sked fm Radio Portugal.

		<u>SEYCHELLES</u> The current sked for FEBA is fm	
02.00-02.45	UNITED STATES (Atlantic)	English	11.935 6.025
03.45-04.30	DIITTO (Pacific)	"	11.935 6.025
02.15-03.00	CANADA	French	11.840
03.00-03.45		English	11.840

0130-0330 (Fr/Sa 0345) 9605 and 11785
0600-0830 (Su 0845) 15270, 11740
1230-1645 15325, 11780 & 90
1700-1900 to ME 15330, 11890
The new 100 KW xmtr will be used very soon with 50 KW when tests are concluded.
(Victor Goonetilleke, Sri Lanka)

SOMALIA *** The rarely reported Radio Hargeisa has been hrd at 1030 fade in to 1100 s/off. Again noted at 1130-1630 all on 11663, maybe 25 KW.
(fan--tastic Victor!! ... Victor Goonetilleke, Sri Lanka)

SOUTH AFRICA The SABC will terminate its MW svc's during 1974. This does not apply to the Domestic SW Svc, which is b/c fm Meyerton, some 60 KM's south of Johannesburg. Springbok Radio is a commercial svc and was instituted in 1950 as a result of a money shortage in the earlier days of b/c'ing in South Africa. Prior to this period, the SABC provided only two pgms for listeners in S. Afr. - in Eng and Afrikaans. All revenue came from listeners' radio licences. The SABC also controls the cmcle svc of L.M. Radio with SW transmitters in Mozambique. The new address for Springbok Radio is P.O. Box 6, 2040 Honeydew, Tvl., Rep. of South Africa.
(very interesting Ross, --- Ross Hynes, Nova Scotia)

SRI LANKA The VOA Colombo sked is fm
0100-0330 on 11875, 11740, 7110 The WRTH skeds are out of date for the
1300-1500 15285, 11835, 7205 VOA.
1500-1830 15280, 11835, 7125 (VOA Monitor, Victor Goonetilleke, S.L.)

THAILAND The Royal Palace Station, "Or Sor", hrd at 1030-1215 usually with pop mx.
(nice ... umh!... Victor Goonetilleke, Sri Lanka)

The Bangkok Meteorological Broadcasting Station which operates on 7863.5 is powered by 10 KW's. They also have occasional Eng. ancmts. Their address is: Meteorological Dept., Telecommunications Div., Skumvit Rd., Bangkok 11, Thailand. (Larry Yamron, PA)

TURKS ISLAND The new station manager, William Grant, says that VS18 operates fm 1300-1600 and fm 1700-1900 daily DST. On Sat's fm 1300-2300 DST. The freq is 4788. (times in GMT please-ed.) (Tom Cwikla, CT)

UNID On Feb. 8, at 1955-2200 and Feb. 9, at 1720, a station was hrd on 6555 ID'ing as "WARC Owned and operated by ARC Incorp. and b/c'ing fm the USA". Power was given as 1000 watts and that they were testing for modulation and stability. Sked was to be given later. Pgm material was rock mx and ancmts of the test. (John Lockmann, VA via Charlie Wootten, VA)

UPPER VOLTA Upper Volta Radio in Ouagadougou b/c's in FF and vernaculars on 4815 fm 0600-0800 4815 at 1700-2300
7230 1200-1600 (Tom Cwikla, CT; Steve Estes, VA)

INDIA Ace DX'ers Dan Henderson, MD, shares the following current sked of AIR regional sta's with us.

	00	01	02	03	04	05	06	07	08	09	10	11	12	13	14	15	16	17	18	19
A																				
B																				
C																				
D																				
E																				
F																				
G																				
H																				
I																				
J																				
K																				
L																				
M																				
N																				
O																				
P																				
Q																				
R																				
S																				
T																				
U																				
V																				
W																				
X																				
Y																				
Z																				
AA																				
BB																				
CC																				
DD																				
EE																				
FF																				
GG																				
HH																				
II																				
JJ																				
KK																				
LL																				
MM																				
NN																				
OO																				
PP																				
QQ																				
RR																				
SS																				
TT																				
UU																				
VV																				
WW																				
XX																				
YY																				
ZZ																				
AA*																				
BB*																				
CC*																				

- Delhi A: A = 3365
- B = 6190
- C = 7290
- Delhi B: D = 6190
- E = 7290
- F = 3365
- Delhi C: G = 3905
- Lucknow B: H = 3205
- I = 6170
- J = 4880
- Ranchi: K = 3305
- L = 6140
- Simla: M = 3223
- N = 4760
- O = 6020
- Bhopal: P = 3315
- Q = 5990
- R = 7180
- Srinagar B: S = 3277
- T = 4860
- Jammu: U = 3345
- V = 4960
- W = 5960
- Bombay A: X = 7020
- Bombay B: Y = 3295
- Z = 7240
- AA = 4840
- Madras A: BB = 4920
- CC = 6085
- DD = 7160
- Madras B: EE = 7160
- FF = 6085
- GG = 4920
- Hyderabad: HH = 3355
- II = 4800
- JJ = 6120
- KK = 7140
- Calcutta A: LL = 4820
- MM = 6010
- NN = 7210
- Calcutta B: OO = 4820
- Kurseong: PP = 4895
- QQ = 3355
- RR = 6100
- Gauhati A: SS = 3375
- TT = 5970
- UU = 7280
- Gauhati C: VV = 3235
- WW = 6130
- XX = 7150
- YY = 4775
- Kohima: ZZ = 3268
- AA* = 4850
- BB* = 6065
- CC* = 7170

WRTH ABBREVIATIONS To open the lock of confusion created by WRTH, try this combination to solve the mystery of locating Soviet stations by their WRTH abbreviations: (DSWCI, WRTH via Charlie Wootten, Morocco)

AA = Alma Ata	Kh = Khabarovsk	Ri = Riga
Ar = Armavir	Ki = Kingisepp	Se = Serpukhov
B = Blagoveshchensk	Ko = Komsomolsk	Si = Simferopol
Du = Dushanbe	Kr = Krasnoyarsk	Sv = Sverdlovsk
Er = Erevan	Kv = Kiev	T = Tallin
FE = Far East (unknown QTH's)	Lg = Leningrad	Ta = Tashkent
G = Gorkij	M = Moscow area	Tu = Tula
Ir = Irkutsk	Ma = Magadan	V = Vladivostok
K = Kazan	Mi = Minsk	Vi = Vinnitsa
Ka = Kaunas	Ni = Nikolaevsk	Vo = Volgograd
Ke = Kenga	P = Petropavlovsk	Vor = Voronezh
		Kuyb- Zh = Zhigulevsk(near yshev)

LOG REPORT

NASMA LOG REPORT
M. R. LEONHARDT
P.O. BOX 1132
RICHMOND, INDIANA 47374
Deadline: 12th of month

The lower $\frac{1}{2}$ LR is being done at HDQ by Dan Ferguson this month, to avoid the problems with the mails we have been having lately.

When reporting to LOG REPORT please use only one side of the paper and list items in order by frequency. Reporters should also leave space between items. Give your last name after each item, use GMT, and mail in time to reach the above LR address by the 12th.

We again caution against the practice of "list logging". Just because someone's list shows station A on frequency X at time T does not mean that is the station you are hearing.

- 2340 VENEZUELA R. Nueva Esparta; 0300 SS tlk & mx w/fqy info & ID. (Schwartz)
2360 GUATEMALA R. Maya be Barillas; 1042 good w/mx & tlk(Robinson)1130 tlk in Indian lang.(Mayer) 0300-0312* abruptly, rel mx(Strickland) My file shows an 0300 s/off, therefore presume they operate late at times. (DF)
2390 GUATEMALA LV de Atitlan; 0230 instrumental mx(Schwartz) 0305-0348* w/NA after LA mx & IDs. (Tuchscherer)
2420 BRAZIL UNID, 1120, 1142 gone. PP, mx, few bulletins; missed 1136 ID(Tuchscherer)
3165 INDONESIA ?? From 1214, vy weak w/man in something, theme from "Godfather" at 1217 & 1229, then "And This Is My Beloved" past 1233. Too much line noise here to attempt an ID. (Hall)
3204 NIGERIA Ibadan; excellent 2/23, 2230 w/tlk, mx 2300, 2306*(Robinson) 10 kw(DF)
3205 DOMINICAN REP Have a report here showing LV de la Libertad at 0035. My file indicates this one to be inactive, and I wonder if the fqy quote S/B 3215a, and the stn S/B R. Libertad. ?? (DF) (Robinson)
3210 MOZAMBIQUE LM at 2216* //4855, after mx, pops, ads. Abt same lvl as 3265 /
3223 INDIA AIR Simla; 0030-0100, sub-cont. mx, almost Persian quality. Hindi 0100, per Ed Shaw.
3225 VENEZUELA R.Occidente, 0150-0201* w/NA, after mx px; M&W ancrs. (No credit, but believe it was John Tuchscherer)
3232 CONGO RTC, Brassaville; exo 2210 local mx, tlk by man, chants, IDs(Robinson) S/off sked 2300, also heard at times at the 0430 s/on time. (DF)
3240 UNID 3/30 1045-1100 f/o, mx px(Field)Sisner's puzzle noted 3/30 from 1036 tune, Andean mx & Indian lang, nearly gone by 1110. One mention of Ecuador but nothing else. (Dexter)
3240 PERU R. America; 0330 soul mx, OM host, //6010 weaker(Shaw)0430-0520(Tuchscherer)
3241 INDONESIA RRI-Ambon; local ID 1000 after clock chimes, then pol. speech(Padula-Oc)
3245T PAPUA/N.GUINEA Tent Kerema 1203-fade at 1210. Weak, Hawaiian type mx. No sign of anything the following day. (Dexter)
3245 VENEZUELA R. Libertador; 0235-0245 SS, LA mx & bulletins. (Tuchscherer)
3255 LIBERIA KLCB, 2235 M. in KE, good byt RTTY(Robinson) Sked to 0000 DF
3260 ECUADOR R. Carrisal; 0315* w/ID(Field) 0255-0310 SS, ID, mx; 3/5(Lineback)
3265 VENEZUELA R.Nirgua, 0100-0130 t/o, ID, mx; much UTE splash(Tuchscherer)
3275 PAPUA/N.GUINEA R.Southern Highlands; 3/13, 1154-1202*; fair lvl, ute quite. Gongs, mentions of water band & "Southern Highlands by man at 1200 (Dexter)
3275 VENEZUELA R. Mara, 0250 mx, ID, fanfare, past 0300(Wallace) Sked to 0400 (DF)
3280 ECUADOR LV del Napo making quite frequent appearances now. 3/5 frm 0235 tune; Andean mx, etc.(Dexter)1047 tentative, SS, mx, tlk by man(Tuchscherer) My file shows the s/on as 1100, but that was some time back. (DF)
3280 COLOMBIA Meridiano 70; 2/12 good one nite only w/mx, many IDs as "Emisora Meridiano Setenta". Not here recent checks.(Robinson)
3280 UNID, seemed to be Venezuela; 0237 & 0249 IDs w/reference to Venez. S/off 0300 w/Venezuela NA. One evening only. (Field)
3290 GUYANA Action Radio; 0410 EE pops(Wallace)0938-1015 fade(Word)0832-0855, on ahead of published sked. M ancr w/details of tx. Some of the mx bordered on AA or Turkish(it's Hindi- DF). Heavy het.(Earhart)
3295 VENEZUELA R.Trujillo at 1000-1115* & 0205-0235+ instr & pop mx, IDs.(Dexter, Word, Tuchscherer, Lineback, Estes)
3300 BURUN DI LVR at 0350 w/French tlk by man; instrumental mx(Robinson)
3300 GABON LVR; 2225 exc sig; instr mx, FF tlk, ID 2230(Robinson)
3300 BRITISH HONDURAS Who thought it was Belize here? Was TGNC? See next item.
3300 GUATEMALA TGNC, R. Cultural; 0100- as late as 0630 s/off, widely heard with rel

- 3315 BRAZIL R.Gazeta; 2350-0005 t/o PP w/mx, ID, news by man.(Tuchscherer)
 3316 SIERRA LEONE RSL; 2240 request px, 2300.mx, power up?(Robinson) 2300-2330* after
 EE by M&W, mx, off w/National Anthem. (A. Smith)
- 3316 MARTINIQUE Port de France, 3/1 in FF, exc lvl at 2245(Robinson)
 3322.5 BOUGAINVILLE IS. RB; 1150-1225 t/o in lang w/lcl & other mx. (Tuchscherer)
 3340 HAITI R.4VEH; 1050 SS, EE ID 1100, 3/3(Word)0000-0045 EE rel px(A.Smith)
 3345 HAITI R.4VEH; ex 3340, 2330 Creole(Robinson) 3/9 1015 SS; another day in FF at
 1100, generally poor(Lineback) Have a tentative report of FEBC here, 3/14, but
 it appears that it should be R 4VEH. (DF)
- 3355 NEW CALEDONIA R.Noumea, 1050 FF mx, LM 1101 & off(Miller)
 3360 GUATEMALA LV Nahuala, 0045-0100 marimba mx, SS tlk by man(Tuchscherer)
 3360 PAPUA R. Milne Bay; 1215-1232 lang, light & local mx, EE armts(Tuchscherer)
 3375 BRAZIL R. Olinda, 0115-0205 t/o, PP tlk, light mx(Tuchscherer)
 3375 VENEZUELA LV de la Fe, fair 0022 w/SS tlk, ID, mx(Estes)
 3377 JAPAN NHK2, Osaka, 1250 JJ(Boulsby)
 3380 GUATEMALA R. Chortis, 0110-0320 +, lite mx, SS, mx(Tuchscherer, Wallace, DF)
 3380 MALAWI MBC first time ever at 2210* w/man, NA(Robinson)
 3385 FR.GUIANA ORTF, Cayenne, 0005-0010 FF, tlk, poor(Lineback)
 3385 N.BRITAIN R.Rabaul, 1145 log drum IS, Pidgin ID & mx, fair-poor 3/14(Burlew)
 3385 VENEZUELA R.Barcelona, fair at 0357 s/off w/NA(Mayer)
 3390 ECUADOR R.Zaracay, 0350-0425+, SS, Ecuadorian mx(Estes, Earhart)
 3395 VENEZUELA R. Universidad, 0330-0355 US blues, ID, YV NA & s/off(Mayer)
 3396 NIGERIA NBC Kaduna, 2250-2305* chants, Af mx, EE nx 2300(Cwikla, Robinson)
 RHODESIA RBC, bells 0350, ID 0355, mx 0400, ads, pops, now a regular at this
 time; past 0425. (Earhart, Miller, Robinson)
- 3915 MALAYSIA BBC-Tebrau, 1500-1515 EE by Radio. (Nebron)
 3930 CAPE VERDE R. Barlavento, 2345 YL w/vocals, unhrd past 0000. (Shaw)
 3935 INDONESIA RRI-Semarang?, Indonesian 1350, 3/16, fair. (Boulsby)
 3980 S.AFRICA SABC, 0000-0035+ EE mx, also 0350(Miller, Hohnstein)
 4121v N.KOREA VotrPftRoK, backfrom 4141 in EE at 1420 tune, 3/21(Hill)
 4494 CLANDESTINE Possibly Pathet Lao 1345-1400+ w/oriental tlk & mx. PL's 4538 channel
 (net II) no longer hrd. Other poss. is United Lao Races, cf March CB(Hill)
- 4495 CHINA Peking, *1400 KK, usual fade out by 1430. (Bill Davis)
 4625L TADZHIK SSR Dushanbe, Soviet stn 2337 seeming not //4635.(Shaw)(That "L" means
 "listed" (DF))
- 4635 TADZHIK SSR Dushanbe, 2335-0000+, weak mx, IS on hour(Shaw)3/22, from 0147
 children's chorus, W. in RR. Tlk on int'l relations, 0200 pips & relay RM(Hill)
- 4656 AZERBAIJAN SSR Baku, 2350 YL, OM, Steppes mx, pips 0000, unknown lang. (Shaw)
 4698 INDONESIA Surabaya, lcl lang & mx 1450(Treibel) 1310 Indon, fair, ID 1321(Boulsby)
 4701 UNID Korean? As Perry reported, woman w/seeming numbers 1205, 3/14(Dexter)
 4709 NORTH VIET NAM? For many weeks stn here regularly as early as 1027, till 1530v*,
 px typical of VV stns, particularly regionals. 3/29 seemed //7374 @1335 w/ YL in VV
 but 4/3 7374 gone at 1455 while 4709 continued. Have been unable to positively
 ID any Hanoi sigs below 7 mHz. (Hill)
- 4719 INDONESIA Ujung Padang w/ strong sig 1445, lcl mx, Indon armts(Treibel)
 4730 BOLIVIA Presumed R. Aborora, Riberalta, 0224 tune, Andean mx, M ancst past 0300
 (Dexter) Tentative, poor 0350, mention Bolivia, 3/24(Mayer) 0240 Shaw)
- 4765 CONGO RTC Congolaise, 2130-2200 FF, Af music, poor(Atkins)
 4769 VENEZUELA R. Bolivar, 2330 SS armts, IDs(Robinson)0238-0310. (Earhart) 1001-
 1012+(Perdue)
- 4772 ECUADOR R. Cunit, fair 2330 Ec mx, string mx, IDs(Robinson)
 4773 N.KOREA KCBS, 1400-1410 KK, mx(Nebron) (Earhart)
 4777 CABON RTG, Libreville, 2237 FF, Afro chanting, 3/25(Miller)2331-0000v/NA /
 4780 ECUADOR R.Atahualpa, 0300, ads after the hour(Shaw)0420-0520+, poor 3/18.
 (Robinson) 4/7, 0420-0438*, orch mx, good ID (Earhart)
- 4788 TURKS & CAICOS IS RTI, 2200-0110* & sometimes later. EE, pops, IDs, little QRM
 now that SABC is gone(Hohnstein, Robinson, Lineback, G.Schnabel, Zilmer, Keating)
 4788v PERU R. Atlantida, 0300-0600v*, relay VoA, also vocal & orch mx, few IDs.(Cress,
 Earhart, Hermann, Tuchscherer, Lineback, Wallace)
- 4790 ***A few reports of SABC on dates long after SABC left this fgy. Watch the IDs,
 gentlemen. Thanks. DF
- 4794 ANGOLA R. Comercial, exc 2/26(data correct? If so, should have been reported
 earlier!) w/Sinatramx, IDs, s/off 2305. (Robinson)
- 4795 ECUADOR LV de las Caras, Andean mx 0330, ID, fair 3/15(Mayer)
 4820 GAMBIA RG, 0650 chants, ID, mx(Kozioimkowski)2235 Af mx(Collier) 2240-2301* lcl
 mx, EE nx 2355, TC, NA & off, weak(Lohe-Bur) *0630(DF)
- 4820 HONDURAS HRVC, 0000-0526*, SS & EE rel px(G.Schnabel, Earhart, Hermann, Day, Cress)
 4825 ECUADOR R. Luz y Vida, 1054 morning sermon(Miller)(That's only one letter away
 from a mourning sermon.) 1120 echo IDs, tlk(Perdue)0520-0704 + SS, mx, IDs, TCs,
 fair 3/19.(Hermann)
- 4825 TANZANIA RT, morning px w/m. in lang tlk 0358, ID 0400, more tlk(Robinson)
 4825 RSFSR(As.) Yakutsk, HS in Yakut, Nat'l Anthem 1400, then RR. QRM from another FE
 Soviet tx, w/"Moscow" CC. (Bill Davis)
- 4830 S.AFRICA SABC, 0350-0450+ EE Svc, fair to good(J.Davis, Hermann, Earhart)
 4830 VENEZUELA R. Tachira, 1130 easy listening mx(Perdue) 0000-0400 (Many)

- 4835 BRAZIL R. Triangulo Mineiro, PP, lite mx, ID *0300, poor lvl(Van Zorge) Presume you mean 0300*, which would read "0300 sign off". *0300 is Sign on. (DF)
- 4840 VENEZUELA R. Valera, 1010 SS, LA mx, TC(Jones)0345 ID, TCs, songs(Day) 0352*
- 4845 UNID, 1045-1100 SS & LL, Seemed Peruvian mx, man in dialect, nx 1055, LA mx & SS tlk by different man, more mx & LL tlk, by first OM. Did not sound like stns usually hrd here. 4/6. R. Sullana, Peru has been rptd here, but I do not think the above is enough for a tentative, will have to be a UNID. (Perdue) Good piece of reporting, Neal. Many would have reported as a definite simply because others had reported it. (DF)
- 4845 MAURITANIA RNM, AA chants, FF, ID, 2303* w/song(NA?), good(Ross)
- 4863 BRUNEI Berekas, Malay px 1415-1430* w/anthems after good sig(Treibel)
- 4865 AZORES Ponta Delgada, 2155-2222, vario us mx, YL ancr, missed ID(Earhart)
- 4865 CHINA Lancow, 1150-1200G tik by IL, mention vietnam, pips & antnem(Lineback)
- 4865 COLOMBIA Vox del Cinaruco, 0600 IDs & amts by man, barely audible 3/24(Day)
- 4870 DAHOMEY Cotonou, 2230 Afr mx, fair to good(Collier)
- 4870 ECUADOR R. Rio Amazonas, *1116v, usually good, ID, amts, Ec mx. (Perdue)
- 4871 W.IRLAN RRI-Sorong, 1153 Indonesian, orchestral mx, off 1200(Miller)
- 4875 BRAZIL R. Jornal do Brazil, good at 1020 w/PP talks, ID(Estes)
- 4875 BOLIVIA La Cruz del Sur, 0130-0200 ID, rel mx, amts by man in SS(Burton) 0935 ID, SS nx, then Indian lang(Jones)1015 Indian lang, 1cl mx(Zimmer)1037 ID(Perdue)
- 4875 S.AFRICA SABC, Afrikaans rel px, political tlk, nx, cntry, mx, good 3/26(Hermann)
- 4877 S.VIETNAM Saigon, 1545-1604* 1cl mx, tlks, ID & ts 1600, NA, amts & off(Lohe-Bu)
- 4884 INDONESIA Bukittinggi, 1200 tune, 3/30, fair lvl. (Dexter)
- 4885v COLOMBIA Ondas del Meta, 1028+ SS ads(Estes)0300-0500*(Earhart, Brown, Boulsby)
- 4885T ANGOLA Tentativa Emissora Regional de Teixeira da Sousa from 0528 s/on w/gongs or songsuch, anthem 0530 & man in PP, 3/20. Then Af mx & instr, heavy on drum(Dexter) Stn here 0530 s/on, missed ID, mentioned "Emissora Nacional at s/on.(Robinson)
- 4890 MOZAMBIQUE Beira, 2059* ID in PP & AP, good(Lohe-Bu) (Burlew)
- PAPUA ABC Port Moresby, 1155 mx, 1200 EE comedy(Guarducci)1210-1215 mx, ID /
- 4890 SENEGAL Dakar, 2257 stringed mx, FF tlk, mix w/LA, fair(Wallace)
- 4890 VENEZUELA Rdif Venezuela, well hrd in the 0000-0400* slot(many)
- 4900 INDONESIA RRI-Gorontalo, from 1212 f/3-1230 t/o, II & vocal groups(Dexter) 1305 Indon, nx(Boulsby)
- 4900 VENEZUELA R. Juventud, well heard 0130-0400* (many)
- 4904v CHAD RNT, 2040-2130 FF drama, 2115 nx in FF, AA, s/off w/NA. On later weekends. (Lohe-Bu) 2245-2300* Sats(Chikla)0528-0545 FF, 1cl mx(Earhart)
- 4906 COLOMBIA Emisora Atlantico, SS 0215(Ferguson)0615-0645 t/o, 3/28 on late(Earhart)
- 4910 CANADA RCI here again 4/6 on this odd fgy w/tlk & IDs by M&H(Perdue) It has not yet been determined whether this is an error or deliberate. (DF)
- 4910 VENEZUELA R. Carora, *1001(Perdue)*1013(Zimmer)ID 2306. (Keating)
- 4915 COLOMBIA R. Guatapuri, 0200-0320+, SS, ads, nx, mx(Estes, Wallace, Day)
- 4915 GHANA RG, 2245-2300 EE nx, Af mx(Keating, Collier, Wallace)0532-0610+, English, nx 0600, ID(Earhart, Koziomkowski)
- 4920 AUSTRALIA ABC, EE nx 0914(Jones)1215-1235 f/o, EE, lite mx(Burlew)
- 4920 HONDURAS R.Progreso, IDs, LA mx at 0300(Ross)
- 4923 ECUADOR R. Quito, 1113 SS tlk(Jones)
- 4927.5 INDONESIA Djambi, RRI nx 1200, mx px 1211 w/tlk by man(Robinson)
- 4932 NIGERIA NBC, Benin, good w/ orchestra mx 2225(Collier)
- 4939v INDONESIA(Java) RRI Bandung, per WRTH74, to s/off 1520v, usual RRI stuff, but weak modulation. Varies to 4938½. (Hill)
- 4940 VENEZUELA R. Yaracuy, *1000v; 2330-0100+. (many)
- 4940 IVORY COAST RTVI, 2250 usual Afro music, noisy, fair(Wallace)
- 4948 VENEZUELA Have report here for Ecos del Torbes this fgy. Believe it might be R. Coro w/relay. See 4950 R.Coro entry.(DF)
- 4950t SARAWAK RMS, 1215-1235 EE, tlk by YL unreadable, mx, pips, ID unreadable(Lineback)
- 4950 VENEZUELA R. Coro, *1000-1100+(Zimmer, Perdue, DF)0000-0300+(Day, Miller, Perdue, Dexter, Ross, Jones) Reactivated.
- 4955 INDONESIA(Sumatra) RRI-Banda Aceh, poor 1135 w/low level lang talks by YL(Estes)
- 4955 COLOMBIA R. Nacional, *1000 chimes & IDs(Jones)0200 SS(Brown)0402+(Atkins)
- 4960 ECUADOR R.Federacion Sucua, 1140-1150 Indian vern, weird string instr mx, 333 (Lineback)
- 4972 CAMEROON R. Yaounde, 2225-2254 H-L mx, FF(Collier, Miller, Earhart)
- 4972.5 UNID(see 3/74 Friends) seems Ecuadorian, 0448, 3/17, Andean mx, one mentions of "Radiodifusora...", fair level. Not Rumbos. (Dexter)
- 4980 GHANA RG, 0603-0625 EE, mx, ad, 343(Earhart)
- 4985 ANGOLA R.Ecclesia, exc 2/23, mx till "Informacao" 0515 & "Radio Jornal(Robinson)
- 4985 INDONESIA RRI-Ujung Bandung, now here, ex 5054, Indon pops 0935, from 3/23(Padula)
- 4990 NIGERIA Lagos, instr mx, good lvl 2215(Collier)
- 4993 BRAZIL R.Brasil Central, 0552 ID(Koziomkowski)0735 singing ID(Perdue) And on 4995 at 0245-0330(J.Davis) On 4995 0200 //11815, ID & PP(Estes)...And if you reported this stn in Spanish that's why your report was not used, since it is an obvious "1st logging"!!(DF)
- 4995 PERU R.Andina, mx, TC, ID 1030(Jones)0510 mx(Guarducci)0510* w/full ID, call letters - first times I ever heard them use call letters(Field)0545 Andean mx, poor(Day)

- 5000 NEPAL now inaudible here due to late time. Re rpt in Feb LR, have always heard them s/on 1150, never hrd before that time. (Robinson)
- 5005 PERU R.Jaen, 0315 astounding lvl, 10 mins readable copy w/ID, s/off with orchestral anthem then vocal anthem. (Shaw)
- 5010 CAMEROON R. Garoua, 0505 AA chants by man, fair(Wallace)
- 5010 DOMINICAN REPUBLIC R. Cristal, 0217 SS(McArdle)
- 5010 PERU R. Eco, 0928-p045 w/Peruvian mx, tlk, IDs(Perdue, Koziomkowski)0000-0500 at various quality, noted by(Wallace, Day, Ross, Tuchscherer)
- 5012 SINGAPORE RS in CC, Asiatic mx, flutter(Van Zorge)
- 5015 GRENADA R.Grenada, 2330-0030 EE nx on independence(Keating)BBC nx 2245(Koziomkowski)
- 5015 RSFSR(As) Vladivostok, Mayak px 1830-1915 f/o(Mayer)
- 5018 ECUADOR R.Continela del Sur, Loja, 0330(Treibel)0400*(Hohnstein)0425*(Bowlisby)
- 5020 ECUADOR R.Continela del Sur, 0215 sports(Field)
- 5020 NIGER ORTN, 2200 flute IS, then YL weak(Shaw)
- 5025 PERU R. Quillabamba1015-1050 Andean mx, Indian lang(Perdue)1100 lcl mx, lang (Zilmer)0200 SS, mx(Schwartz) 0300 s/off after musical px(Field)
- 5026 UGANDA RU, 1950 EE tlk by man, good to fair(Lohe-Eu)
- 5030 SARAWAK RMS, YL in EE, then soft mx, 1150, 3/14(Mayer)
- 5030 VENEZUELA R. Continente, 0030-0430+, SS IDs, mx, jingles(Day, Web, Wallace)
- 5032 COLOMBIA Em. Brisas del Citara at good lvl 0350, 3/31. Must be irreg sked, as always good lvl when hrd & has not been noted inweeks(Dexter) 0435-0545*abruptly, het R.Continente(Bowlisby)
- 5032.7 ANGOLA RC Cabinda, slight fgy drop, full ID, 0557 IS, 0600 ID by man, "Aqui Portugal, estado de Angola, Radio Clube de Cabinda"(Robinson) 0510(Wallace)
- 5035 CENTRAL AFRICAN REPUBLIC Bangui, 2220 H-L mx(Collier)2305* w/NA(Ross) 2130 FF tlk, Afr & jazz mx, best & first Afr on the band(Schwartz)
- 5040 VENEZUELA R. Maturin, 0540 ID(Burton)
- 5041 PERU R.Libertad, 0330-0645+, Andean mx, IDs, armts(Tuchscherer, Day, Collier, Mayer, Field)
- 5046.5 TOGO Lome was noted 5 days this fgy, then back to 5047(Robinson)5046.8(Burlew)
- 5058 ECUADOR R. Progreso, Loja, now here, mostly mx & IDs 0430-0500+(Dexter)
- 5260 UNID Asianm 1205 CC format, mx was more Indonesian(Shaw)
- 5345 CLANDESTINE VotFree Yemen South, 1950-2000* inAA, Koran, ID, Anthem(Wootten-Mor)
- 5560 JAVA Presumed R. CP Propinsi Java Timur from 1218, weak w/man talking, nondescript mx, I left 1230(Dexter)
- 5750 USSR Unlisted Soviet tuned 1448, orchestral mx, RR vocal cont thru 1500 even while pips were pipping. Weak, fluttery sig suggests Central Asia QTH(Hill)
- 5804 YEMEN Sanaa, AA 0330, chants & talk(Koziomkowski)
- 5873 HONDURAS LV de Honduras, 2345 SS, ads, LA mx(Miller)2200-0300 SS OM mx(A.Smith)
- 5938 SUMATRA Acc to Victor G via RADX, my unID RRI here is Medan. Sked fits & I certainly see no reason to question the ID. (Hill)
- 5940 USSR RM, 0200 EE mx(Jones)
- 5951 COLOMBIA R. Super, 0300-0700+, again 0917(many) does it run AN?(DF)
- 5954 COSTA RICA R. Casino, 0700 LA mx, ID(Creamer)
- 5955 BRAZIL R. Gazeta de São Paulo, 2239 sports, poor(Mayer)
- 5955 GUATEMALA 0005-0015 SS rel tlk & mx(Fino) ID 0230, mx (Creamer)
- 5960 CANADA CBC No. Svc., 0030 tlk on streaker(at 140?) (Brown)
- 5960 ECUADOR HGJE RR sermon to Bur 0435, NF ex 6070, ex 5990, from 3/30(Padula)
- 5970 PERU R. El Sol, 1045 lcl mx(Zilmer)0420-0440 SS ID, tlk, no mx(Burton)
- 5980 EL SALVADOR 2310 t/1, long path 3/23, f/o 2359. (Padula-Australia) Noted 0230 SS (Koziomkowski)0315-0340+ piano mx. (Earhart)
- 5980 SWITZERLAND SBC, 0145-0215 EE, then SS(Miller, Earhart)
- 5985 ARGENTINA R. Splendid, 0955 SS, popx, some EE records(Zilmer)
- 5990 RUMANIA R.Bucharest, 0156 EE(Guarducci)0310 EE nx, ID(Koziomkowski)
- 5995 AUSTRALIA RA, 1100-1200*, EE, soft mx(Perdue, Guarducci, Koziomkowski)
- 5995 MALI RM, 2220-2240 lang & FF, mostly mx (Earhart)
- 6000 SINGAPORE RS, 1610-1630* in CC, strong, light classics(Treibel)
- 6000 SWEDEN RS, multi-lang ID & into SS(Agner) Time?(DF)
- 6006 COSTA RICA R. Reloj, 0245+ mx, IDs, requests, TCs(Brown, Koziomkowski)
- 6010 PERU R. America, 1100-1130, LA & Andean mx, ads(Tuchscherer, Jones)
- 6010 VENEZUELA R. Los Andes, 0020-0130 LA mx, ads for futbol, SS(Lohe-Eur)
- 6015 FRANCE ORTF, EE tx 0530, FF 0545, sig fading(Treibel) Jones/
- 6019 VENEZUELA R. Anzoategui, *1000-1100+, IDs, mx, pops, ads(Tuchscherer, Zilmer)
- 6020 HUNGARY R.Budapest, GG DX px Sat 2245-2359*, recent NF this svc(Padula)
- 6020 MEXICO Eco de Sotavento, 0435-0600* mx, light & classical, s/off w/NA(Tuchscherer)
- 6025 NIGERIA(Biafra) RN, Emgu, British comedy 2130-2157, EE ID(Burlew)
- 6025 PARAGUAY R.Nacional 2345-0000 SS nx, then wiped out by Portugal(Mayer)
- 6035 BRAZIL R. Globo, 0901-0920 PP, mx, ads, good reception(Perdue)
- 6040 CANADA CBC Sackville, SS to LA 0000-0030, via long path(10 AM here), sig path approximately 17000 miles(Padula)
- 6060 GREECE VoA-Kavala, FF to Afr 2220-2230*, NF ex 6080(Padula)
- 6060 USSR *1430-1525* RR HS to Pacific fishing fleet Mon, Wed, Fri, Sat; CC other days. //9770, 9780, ex 7280(B.Davis)
- 6065 ETHIOPIA ETFL, 0415 EE ID & then vernaculars, also hrd 1130(Strickland)
- 6075 URUGUAY R. Ariel, 1014 tune w/mx & M. ancr, ment. "R.Ariel", 3/30(Dexter)

- 6085 CANADA RCI, *0100-0155* EE nx, DX px, 8755 is terrible nou(J. Davis)
 6085 W.GERMANY Bayerischer Rundfunk, pips 2300, GG Nx, mx, 2 NAs, 2310*(Robinson)
 6095 BRAZIL R. Tupi, 0914-0935 PP, pops, QRM Colombia(Earhart)
 6095 Re the Mogadishu rpt in 3/74 LR, I would like to think it so, but Iraq is too convincing on same freq, twice the pwr, and AA is not a listed lang for Somalia. Is the ID in this DEFINITE?(Robinson)
- 6105 BRAZIL Ceara Radio Clube, ID 2240, then Br mx(Mayer)
 6105 COSTA RICA R. Universidad, 1305-1325+, marches, ID, nx bulletins(Tuchscherer)
 6105 MEXICO XEQM, 1246 SS, ID as XEQM & one other. (Jones)
 6115 PERU R. Union, 0510-0525 SS, LA mx, VG(J. Davis)0350 tlk(Mayer)
 6120 INDIA Gen Svc, Hindi nx 2305, ITU says Delhi(Padula)
 6120 HAITI R.4VEH, 1230-1240 EE rel px(Atkins)
 6135 CHILE R. Universidad de Concepcion, *1058 EE/SS, mx, cmtry EE & SS(Zilmer) 2310 international news(Mayer)
- 6135 TAHITI Papeete, 0615 concert mx, //11825(Eurton)
 6140 AUSTRALIA ABC Brisbane, world news 2230, long path(Mayer)
 6151v COLOMBIA LV de Huila, 0130-0800+(many)
 6150 COSTA RICA R. Atenea, 1000 SS, ID, QRM YV(Zilmer)
 6155 BRAZIL Believe unid here is R.Cultura, São Paulo. Good lvl 3/26, from 0014 tune. Several "Radio Cultura" IDs, mentions of São Paulo, MW, SW, FM fqys(Dexter)
- 6155 BRAZIL R. Cultura da Bahia 0930 & 2315 PP, pops(Zilmer)
 6155 HAITI R. Citadelle, rel mx, FF ID 1145, fair, 3/13(Mayer)
 6160 VENEZUELA R. Canaima, 1000 SS, ID, tlk, ads, jingles, mx(Zilmer)
 6165 CHAD Ndjamana, presumed, first noted 1/3 & on subsequent dates. Appears to be hi pwr tx, Af songs, FF amts 2100-2300*. S/off time varies, dominant over SEC till SEC s/off 2245. No ID noted specifically, but presumed the one, according to SCDXers. Needs a recheck. (Padula-Australia)
- 6165 ISRAEL IBA, 2325 EE under Mexico(Atkins)
 6165 ZAMBIA 0500 poor under big R. Ned,EE nx (Shaw)
 6170 COLOMBIA LV de la Selva, 0835 SS, LA mx & tlk, many IDs, 0835(Perdue)0426-0455 f/o SS mx, ID, TCs(Hermann)0749*Agner)
- 6170 MOROCCO RTM, 2145 AA, chants(Zilmer)
 6175 BRAZIL R. Guarani, 2345 PP,mx, QRM BEC(Zilmer)
 6175 GREECE HNBI Athens, *0500 Greek to Turkey, mixed USSR HS(Padula)
 6180 NORWAY R. Norway, 0100 NorwegianIS, ID, YL talking(Miller) poor(Miller)
 IS 0250, Nor ID, fluttery but not bad sig by European standards here(meaning if they're audible they're a good signal). WRTH 74 lists 6185 & listed //s 9550 & 9645 inaudible. What's the story, ECNA?(Hill)
- 6185 BRAZIL R. Bandeirantes, 2355 PP talk(Zilmer)
 6185 PORTUGAL The SSB facility noted consistently here in the 2130-2300 slot in PP presumed for fishermen. (Padula-Australia)
- 6195 CHILE Voice of Chile, EE ID 0430-0520, some AA noted. (A.Smith)
 6210 INTERNATIONAL WATERS RNI, 0230-0300 EE pops, DJ amts, best ever 3/20(Lineback)

And that's the bottom 1/2 LR this time. Your editor was Dan Ferguson, due to tight scheduling of the printing this month & the need to avoid an additional trip for this material to the east & back.

Fellow noted the other day that I referred to the agency that handles the mail as the "U.S. Postal", and that I had left the "Service" out. I didn't take the service out, but I'll agree to put the "Service" back in when they put the service back in. Dan Ferguson.

- 6209 INTERNATIONAL WATERS RNI; 2300 EE pop mx (Zilmer)
 6218 DOMINICAN REP LV de la Libertad; 0015 t/a-0040 t/o LA mx, TC's, ID's(Burlew)
 6240 CLANDESTINE R. Liberation; 2010-2302*Vern talks, mx, s/off w/NA(Wooten)
 6265 SOVIET; Unid heard 1330 w/classical mx //6190, 6115, etc. (Hill)
 6280t TURKEY Technical Univ of Istanbul; 2015-2030* TTtalks, possible ID (VanZorge)
 6665 CHINA R. Peking; 2133 CC talks by YL (Wooten-Morocco) / (A.Smith)
 7010 UNID. 2300-2320* Lang w/much QRM, anthem sounding like "Internationale"
 7050t EGYPT R. Cairo; 0302-0436 AA chants, talks, nx, chimes at 0400 (Hermann)
 7100 MONACO TWR; *0625-0724 EE rel px, QRM BBC (Hermann)
 7100 USSR R. Moscow; *1530 CC px (Bowlby); 0245 SS px, very early f/i via long path. (Padula-Austl)
- 7105 MALAGASY REP; Tananarive Net II weakly modulated 1530 FF and bouncy guitar. Needs rechecks. (Hill)
- 7110 MALI R. Mali; 0830-0845 FF amts, W. Afr rhythms via long path. Seems to be in use at this time on various week days, not only on Sun as per WRTH(Padula)
- 7120nf CHAD Rdiff Nat Tchadienne; 0735-0800 f/o FF political speech, W. Afr vocals. First time heard, ex listed 7220. Bad QRM American ARO's (Padula-Austl); Assumed the Afro heard 1540-1645 f/o. Nearly all lcl hi-life mx, few amts. Another day off 1702* via long path (Hill)

- 7120 CHINA R. Peking; 0330 EE discussion, CC mx (Wilson)
- 7130 ENGLAND BBC; 0205 EE "World News" (Wilson)
- 7150 AUSTRALIA RA; 1515 EE "DXers Calling" px to SW Asia (Wootten-Morocco)
- 7150nf INDIA AIR; 2300 EE EOS to Asia. Believed to be Bombay ex 7125(Padua-Austi)
- 7175nf MOROCCO VoA Tangier; 0630-0635 EE nx to S, Eur ex 7170 (Padua-Austi)
- 7180 MALAYSIA BBC; 1155 t/i VV, change to CC 1200. Heavy QRM (Word)
- 7190nf YEMEN P.D.R. DYBS; 0315-0330 AA nx, ID 0330 mentioning Yemen (Mayer)
- 7200 SUDAN R. Omdurman; 0405 AA chants (Mayer)
- 7200 USSR R. Peace & Progress; 0400-0430 SS to LA, ARO QRM (Keating)
- 7200 USSR (Unid site); 1240 t/i, Mayak IS 1300, pips, RR talks by YL. Anyone know this one? (Burlew)
- 7205 USSR R. Kiev; 0035 EE nx, mx, ID by YL (Webb)
- 7210 Cf April LR, Tx is England not Canada. A station in NA cannot legally broadcast on 41 meter band (Hauser)
- 7215 ANGOLA R. Ecclesia 1553 poking thru weakly for 5 min w/instrument mx, PP and gong 1556. Wipe out 1600 by powerful SVN Voice of Pat. Militiamen's Front. Angolans a rarity on WCNA (Hill)
- 7215 GREECE NHBI; Consistant via long path to 1553 s/off. Sunday chorale rel px 1520. Another day had Greek YL ID same time, followed by Greek instrument mx and vocals past 1525 (Hill)
- 7215 IVORY COAST R. Abidjan; 2335-0002* FF talks, light mx (Tuchscherer)
- 7225 PHILIPPINES FEBC; 1645 RR rel px. Excellent signal (Treibel)
- 7225-6v UNID; 2158 AA mx, talks. No //s noted (Estes); 0340 AA talks, Asian mx, ID Bad QRM DW Kigali. Noted 3/19, 3/26, 3/28 (Bowsby, Hill)
- 7235 AUSTRALIA RA; 1505 EE nx, ID (Creamer)
- 7245 S. VIETNAM VTVN; 1131 VV talks, mx (A. Miller)
- 7245 ANGOLA Em. Oficial; 0020-0050 Strong on a Sun AM when on late sked w/Afr and PP vocals. This is one of those signals which propagate via a path bordering on southern Polar regions, and gives unusual listening conditions in our mid-winter later in year. (Padua-Austi)
- 7250 VATICAN Vatican Radio; 1510 EE rel px, then into Polish 1515 (Wootten-Morocco)
- 7265 W.GERMANY Sudwestfunk; 0408 GG ID, folk mx (Mayer)
- 7275 ITALY RAI; 2045 Bird IS, NA into SS px (Burlew)
- 7295 UNID. 2047-2050* OM & YL alternating. Greece? Unreadable (Schnabel)
- 7300 ALBANIA R. Tirana; 0130 EE talks, mx (G. Miller)
- 7310 RSFSR R. Vilnius; 2247-2300* EE, mx px (Hermann)
- 7310 RSFSR R. Moscow; *2300 RR or Ukr w/ICL nx, time as 2:00 o'clock, believe to be same site as Vilnius tx. (Hermann)
- 7311 N. VIETNAM R. Pathet Lao; Carrier 1458, FF ID twice by OM //4666v. Noted also 1145 in Lao. (Hill)
- 7325 ENGLAND BBC; 0200 EE nx (Strickland)
- 7335 CLANDESTINE. Voice of Truth; *2030-2112* 18 note flute IS, Greek ID as "Accoute Radiofonica Alithias", OM & YL talks, no ID at s/off, just dropped carrier suddenly (Wootten-Morocco)
- 7345 USSR R. Moscow; 0440-0445 EE nx, cmntry (J. Davis)
- 7384t CLANDESTINE V. Peaceful Laos; 1135 OM & YL not Viet or Thai lingos. (Shaw)
- 7395nf ISRAEL IBA; 0500-0530 EE and FF nx (Cress); 0505 EE nx via long path (Padua-Austi); 2245-2252* FF to Eur, freqs, ID (Lineback) // (Shaw, Keating)
- 7416 CLANDESTINE Liberation Radio; 1120-1130 VV YL, vocal mx. Believe //10225
- 7420 BIELORUSSIAN SSR R. Minsk; 2150 RR mx, opera, talk by YL (Estes)
- 7420 USSR R. Moscow; 2253-2302 Lang into SS w/ID, nx, mx. Faint jamming (Lineback)
- 7486v CLANDESTINE Pathet Lao; 1525 past 1550 YL in lingo //7311 (Hill)
- 7500 AUSTRALIA VNG Time Station; 0645 EE ID (Strickland); 1230 EE ID (Word)
- 7688 CLANDESTINE R. Espana Independiente; 2128 SS talks (Wootten-Morocco)
- 7820 CHINA R. Peking; *2000-2015 GG ID's, nx, mx (J. Davis)
- 7863 THAILAND Thai Meteorological Station; 1115-1130. Gave sked in Thai, US and Thai mx (Estes, VanZorge)
- 8345 CHINA R. Peking; 1507 YL in Thai or Burmese (Hill)
- 8404 CLANDESTINE Radio of the South Yemeni Revolution; 1955-2000* AA, signed off with Koran chants, ID and anthem. // 5345 (Wootten-Morocco)
- 9009 ISRAEL IBA; *0000 SS ID into nx (Brown, Fino); 0115 Hebrew talks, pop mx (Zilmer, Jones); 0305-0310 RR, YL reading nx (J. Davis)
- 9022 IRAN R. Iran; 2000 EE nx, mx (Zilmer); 0010; 0241 OM in Farsi (Brown, J. Davis)
- 9360 SPAIN RNE; 1940-1945* SS, mx (J. Davis); 0220 SS, mx //9530 (Jones)

- 9375 USSR Khabarovsk; 0630 f/o RR Mayak px of HS now heard. Has been 0500* this winter (B. Davis)
- 9390 CHINA R. Peking; *1400-1455* Px in Indonesian. Fair signal most AM's (B. Davis)
- 9410 ENGLAND BBC; 2005-2315 EE nx, mx, cmntry (Fino, J. Davis)
- 9455 PERU R. Continental; 0935-0945 SS vocals w/orchestra (Earhart)
- 9455 N. KOREA R. Pyongyang; 1300 EE nx w/YL ancr (Schwarz)
- 9500 UZBEK SSR R. Tashkent; 1200 EE nx, cmntry (Schwarz)
- 9505 PERU R. America; 0601-0630 t/o SS, pop LA mx (T'ischerer, Guarducci, Robinson); 1115 SS talks, ID, mx QRM Barquisimeto 9510 (Zilmer)
- 9505 SUDAN R. Omdurman; 1900-2200* AA talks, orch mx, ID (Earhart, Robinson)
- 9505nf MALAYSIA BBC Relay; 0030-0045 new svc to India, native lang (Padula-Austl)
- 9505 USA KGEI; 0945 RR rel px, rel mx (Jones) Jack, this has me confused. Station sked says RR 2300-2330 Fri & Sun only. This freq not listed. Did you hear ID? Ed.
- 9505 DOMINICAN REP RTV Dominicana; EE nx 0130 (Strickland)
- 9510 ASCENSION ISL BBC; *2300 EE nx, cmntry, DX px (J. Davis)
- 9510 TAIWAN VOFC; 1802-1900 EE cultural talks and mx (Wootten-Morocco)
- 9510 VENEZUELA R. Barquisimeto; 1835-1900 t/o ss talk, us pop mx (Tuchscherer)
- 9515 LIBERIA VoA Monrovia; 2345 EE "Music USA" (Tuchscherer)
- 9520 USA KGEI; 2045-2100 testing new 250 kw tx w/OM in repeating tape (A. Smith)
- 9525nf USA WYFR; 0320-0500* SS px (Padula-Austl)
- 9525 INDIA AIR; 2030-2145 t/o EE nx, cmntry, Indian mx (Tuchscherer, Burlew)
- 9525 SOUTH AFRICA RSA; 2235 EE nx, ID (Koziomkowski)
- 9525 CUBA R. Habana; 0745-0755* EE anti-US talks (Atkins)
- 9535 SWITZERLAND SBC; 1020 OM & YL in II drama (Earhart); 0145 EE px (McArdle)
- 9535 AUSTRALIA RA; 1232 EE nx (Earhart); *2130 EE ID into VV px (Brown)
- 9535nf W. GERMANY DW; 2330-2350 GG px to E. Asia ex 6010 (Padula-Austl)
- 9535 CANADA RCI; 0010-0055 SS px to LA (Fino)
- 9540 USSR Petropavlovsk-Kamchatka; *1300-1330* Korean px //11980 (B. Davis)
- 9540 POLAND Polski Radio; EE address anmt 1630 into Polish px (Ross)
- 9545 W. GERMANY DW; 0405 FF px to E. Afr, ID noted (Buxton); 2315 GG nx (J. Davis)
- 9545 BRAZIL R. Universo; 0130-0153 PP OM talks (Mayer)
- 9550 CUBA R. Habana; 0130 SS px (J. Davis); 0405-0430 SS political talk (Fino)
- 9550nf BELGIUM RTE; 2130 DD nx. Ex 9585 (Padula-Austl)
- 9550 JAPAN NHK; 0625-0655 f/o JJ w/seeming sports. Unlisted WRTH, FBIS says 5 kw (Hill) / MRL
- 9555 LIBERIA ELWA; 1915 Afr rel mx, talks in lang (A. Miller) Vern per station sked
- 9560 ECUADOR HCJB; 0130 EE "DX Partyline". New time. (Zilmer, Wilson)
- 9562 PERU R. Nacional; 1139 "Musica Huanca Concurso Nuestra Patria" (Schnabel); 2357 SS ID, talks, mx (Zilmer)
- 9565 W. GERMANY DW; 0040-0100 GG variety px (Tuchscherer)
- 9570 SPAIN RNE; 2320 SS, OM talking (J. Davis)
- 9570-2v CHILE R. Diego Portales; 2330-0200 SS comedy, ads, anmts (Lineback, J. Davis, Dexter); 1100 march mx w/ID (Field)
- 9570 AUSTRALIA RA 1145-1215 EE. pop mx, ID (Earhart, Kosionkowski)
- 9570 NIGERIA RTV Kaduna; 2200-2230 Afr mx, Drum IS 2230, ID in lang (Collier)
- 9575 VATICAN Vatican Radio; 0100 EE rel px (McArdle)
- 9575 ITALY RAI; 2330-0040 II anmts, opera vocals (Fino); 0120 EE ID, mx (Creamer)
- 9575 GREENLAND Grønlands Radio; 2245-2303 f/o under RAI in Danish (Mayer); Sometimes dominates channel 2320-0010 w/ RAI audible beneath (Hill)
- 9580 PHILIPPINES VoP; *1400-1657* EE nx, mx, cmntry, ID's (Morlan, Perdue, Zilmer, Creamer)
- 9585 BRAZIL R. Nac de Sao Paulo; 0825-0835 PP talks w/ID, piano mx (Perdue)
- 9587 PERU R. Selecta; 1131 t/i SS, mx, TC's, ID 1145 (Dexter)
- 9590 CHILE R. Pres Balmaceda; 1100-1200 SS ID's, US pop mx (Buxton, Word, Zilmer)
- 9590 NETH. ANTILLES RN Bonaire; 0337 SS, clearly relaying Morse QRA marker from KRH50, picked up when it taped noticias from PTP feed (Hauser)
- 9590 UNID. A tape of speech, language not EE, but unidentified, being played backwards 2133-2143* abrupt. BBC sked here, but not // 15260 (Hauser)
- 9595 JAPAN NSB; 1320-1330 JJ ID, talks by OM (Tuchscherer)
- 9595 BRAZIL R. Cultura da Bahia; 2300 PP talks, ID, mx (Zilmer); 0050-0105* Samba mx, nx, ID and s/off w/motif from "Bahia" (Lohe-Eur)
- 9595 Cf April LR Correct freq for R. Rio Mar, Brazil is 9695 (Zilmer)

DX LIMERICK

A DXer I know named Lears,
Has used headphones for many years,
I'm willing to bet,
That soon he will get,
The dreaded disease - Ingrown Ears.
(Neal Perdue - Tennessee)

- 9600 MEXICO R, Univ Nac de Mexico; 1500; 1700 SS talks, ID, Mexican mx (Perdue)
- 9600 UZBEK SSR R, Tashkent; *1159 IS, EE ID, freqs, TC into nx //9540, 11925 (Burlew, Perdue)
- 9605 VATICAN Vatican Radio; *0100-0114 EE rel px (Webb, Overcamp)
- 9606.5 BOLIVIA R, Pirai; 0000-0158 wipeout by DW. Several ID's. Main theme from Grieg's Piano Concerto often used as background music to ID. Very difficult to log, but worth the effort. (Hill)
- 9607 UNID. 0125 SS, OM talking, occasional interruption by bar or two of mx (Bowsby)
- 9615 PHILIPPINES PBS, Manila; 0900 relay of MW network, EE ID and TC's, EE nx. Bad QRM DW/Cologne. PNS not noted daily, seems to be some sort of special service (Padula-Austl)
- 9620 S, VIETNAM VTVN; 0025-0031* OM & YL in VV talks.
- 9620 FRANCE ORTF; 2034-2245 FF talks, nx, cmntry, light mx (Creamer, Fino)
- 9635 BRAZIL R, Aparecida; 2330 PP ID, mx, talks, Sao Paulo ID (Zilmer)
- 9640 VENEZUELA R, Nacional; 1120-1200 SS ads, pop mx (King) / Cress)
- 9650 GUINEA Rdiff Nationale; 0230-0430 FF political talks, Afr mx (Schwarz, Webb, 9665 BRAZIL R, Nac de Brasilia; 0010-0155 PP sports (Bowsby, Zilmer)
- 9675 BRAZIL R, Diario da Manha; 0020-0140 PP talks, ads, nx (Collier, Bowsby)
- 9680 VENEZUELA R, Puerto La Cruz; 1140; 1230 SS ID's, ads, jingles (Zilmer, Mayer)
- 9680 AUSTRALIA VUH9 Melbourne; 1140-1310 EE ID, nx, comedy (Guarducci, Pitts)
- 9680 SOUTH AFRICA SABC; 0528 EE lcl nx, Doris Day songs (Earhart)
- 9685 BRAZIL R, Gazeta; 0130 PP sports (Zilmer)
- 9685 TAIWAN VOFC; *1230 CC ID at s/on (Koziomkowski); 2300-0000 CC px (Hill)
- 9690nf PAKISTAN R, Pakistan; 2050 FF to Eur (Padula-Austl)
- 9695 BRAZIL R, Rio Mar; 0115-0145 PP sports and ID under RSA (Estes, Zilmer)
- 9695 SOUTH AFRICA RSA; 2225-0120 EE, nx, cmntry, sports (J. Davis, Nebron, Brown)
- 9700 AUSTRALIA RA; 2355 Indonesian lang px, RA is long path (Hill)
- 9705 BRAZIL R, Maua; 0010 PP talks, jingles, electronic tones (Zilmer)
- 9705 INDIA AIR; 1305-1315* talks in lang, native choral mx (Tuchscherer)
- 9710 ECUADOR HCJB; 0950-1015 EE ID into PP px to Brazil (Earhart); 0410 EE to Eur (Padula-Austl); 0335-0420 RR talks into Roumanian 0400 (Fino)
- 9710 UNID. Possibly SABC 1431-1445 pop mx, OM & YL in EE and lang, singing ads, chimes after ads, (Perdue) This freq was reported as nf for SABC Feb. LR-MRL
- 9710 ARGENTINA R, El Mundo; 2315-2340 SS nx by OM & YL readers (Tuchscherer)
- 9715nf ECUADOR HCJB; 1200 EE "Hello DXers" px //11740 (Zilmer)
- 9715 PHILIPPINES FEBC; 1400 "Let's Learn English" px (Tuchscherer)
- 9720 PERU R, Victoria; 1140-1230 SS nx, talks, march mx (Zilmer, Tuchscherer)
- 9725rf SWEDEN R, Sweden; *0130 SS px (Mayer); 0230-0255 EE px to WCNA (Zilmer)
- 9730 AUSTRALIA RA; 2250-2327* EE ID, gave Saigon lcl time. Very weak (Hill)
- 9745 IRAQ R, Baghdad; 1933 EE nx, Arabic type mx (Ross)
- 9750 TAHITI R, Tahiti; 0450-0515 Tahitian talks and mx //11825, 15170 (Cress); 1620 Much QSB pop/jazz followed by nx 1630. Not seen in FRENDX over a year (Hill)
- 9750 ENGLAND BBC; 1050-1100 EE horse race nx (Earhart)
- 9750 LITHUANIAN SSR R, Vilnius; *2330-2356* SS ID's, nx (J. Davis)
- 9755 BRAZIL R, Brazil Central; 0100 PP in clear one minute between VoA s/off and RCI s/on in EE 0101 (Bowsby)
- 9760 GUATEMALA R, Nac. de Guatemala; 1200-1400 SS. Back on air after long absence (Legge) What kind of px? Is this new station name? Reported in April LR as "Voz de Guatemala" - MRL
- 9765 ASCENSION ISL BBC; 0412 SS nx. (Guarducci) This is Ascension, not England, Giro. - MRL
- 9769 PERU R, Samaren; 0415-0440 t/o SS talks, US pops (Tuchscherer)
- 9770 AUSTRALIA RA; 0815-0835 EE hit parade, mx (Atkins)
- 9785 ISRAEL IBA; 2040 EE nx, ID, freqs (Kozionkowski); 0138 Hebrew?, pop mx, //9009 (Jones)
- 9785 USSR R, Moscow; 1500 IS into unreadable lang CW QRM, polar flutter (Burlew)
- 9790 ALBANIA R, Tirana; *0200 IS, Albanian ID as "Ju Flet Tirana" (Jones)
- 9800 ENGLAND BBC; *2200 JJ ID and nx. Why this channel? (Agner)
- 9805 EGYPT R, Cairo; 2247 EE ID, mx (Koziomkowski)
- 9815nf ISRAEL IBA; 2315-0015 soft romantic type vocals in EE and lang, IS 2357-0000, announced lang not readable (Cress); 0235 Isreali pop mx //7395 (Hill)
- 9850 EGYPT R, Cairo; 1905-1920 AA, mx, OM talking (J. Davis)

DX LIMERICK

The old veteran DXer, Douglas MacDoo,
(Laid claim to have veried 402),
Said "I need only two more,
Since there only 404,
Then my remarkable career will be thru"
(Mac Leonhardt-Indiana)

- 9940 CHINA R. Peking; 0325 EE propaganda talks (Brown)
- 9988-9v CLANDESTINE Voice of the National United Front of Kampuchea; *0001 Khmer language by OM & YL. Lost 0025 //10030(Wootten-Morocco); 1330 (Robinson); 0045 squeezed between facsimile and carrier //10079 (Hill)
- 10040 N. VIETNAM VOV; 1300-1328 EE nx by OM (Perdue); 1400 long talk in lang (G. Miller)
- 10250nf ISRAEL IBA; 0505 EE nx (Padula-Austl)
- 10530 KAZAKH SSR R. Alma Ata; 0100 RR ID, OM & YL in talks, mx (Mayer)
- 11672 PAKISTAN R. Pakistan; 1145-1200 EE ID, announced as to listeners in Eur (Earhart); 1625 EE ID as "R. Pakistan calling Europe" (Creamer)
- 11685 CHINA R. Peking; 1202-1217 EE nx, cmntry (Earhart)
- 11695 CLANDESTINE R. Courier of Iran; 1600-1610 YL in Azerbaijani (Earhart); 1655 Farsi talks and mx (Ross)
- o o o (M.R. Leonhardt 4/19/74)
- 11700 ISRAEL IBA; 2345-0000 SS, IS, ID, tlk, mx, //9009, fair (Zilmer 3-25)
- 11700 GERMANY (DR) RBI; 1400 GG, tlks by YW, (Schwarz)
- 11700NF USSR RM; *0200-0530* CC, weaker than 11710 or 11730, (B. Davis)
- 11700 VATICAN VR; 1620 EE, to Africa, fair (Word 3-12)
- 11710 ARGENTINA RAE; 2255-2332 EE, nx, ID, tlks, mx, fair (Earhart)
- 11710 INDIA AIR; 2330 sitar mx and tlk in lang. over RAE (Robinson)
- 11715NF CUBA RHC; 0350-0410 SS, Chile? beep jammer, moved here to escape, failed, poor on 4-4, (Earhart)
- 11715 SWITZERLAND SBC; 0150 EE, "Talk Shop", good (Ross)
- 11720 BRAZIL R. Mac. Brasilia; 0025 SS, LA and instrumental mx, tlk, ID, fair (Ross)
- 11720 CANADA RCI; 1800 EE ID, freqs, good; 1500-1605 EE/Esk. No. Svcc., good w/tlk, mx, //9625, (Wallace, Fino, Brown)
- 11720 USSR FE site HS; now off at 0500 instead of 0515, poor to fair (B. Davis) J. Davis)
- 11730 NETH ANT RN *0200-0245 EE, nx, cmntry, DD by Radio px, SWL px, E (Overcamp, //
- 11735 MOROCCO RIM; 1730-1800* AA, good (A. Smith)
- 11740 ECUADOR HCJB; 1135-1145 EE, "Hello DXers", //9715, good (Zilmer)
- 11745 FRANCE ORTF; 1540-1552 FF/RR, mx, ID, RR tlks, fair (Earhart 4-5)
- 11750 MALAYSIA BBC Tebrau; 1237 EE, Int. Hit Parade, poor (A. Miller)
- 11760 CUBA RHC 0300* SS, good (J. Davis)
- 11765 USSR R Yerevan px now here w/Armenian to EU 2030-2100, new svc, supplementing the usual Sunday morning px 0800-0900, (Padula-Australia 3-18)
- 11765 BRAZIL R Tupi; 0020-0110 PP, sports, nx, tlks, mx, poor to good (Collier, Zilmer, Wootten-Morocco)
- 11770 MEXICO R Mex; 2330 SS, nx, ID, fair (Ross)
- 11775 SPAIN RNE; 2005-2035 SS, ID, ammts, mx, QRM by OM in FF, fair (Fino 3-31)
- 11780 ARGENTINA R Belgrano; 2315, 0200 SS, sports, alternate nights, ID, poor to good, (Zilmer 3-22, Robinson)
- 11780 MOZAMBIQUE RCM; 1830 w/pops, ads, IDs, strange propagation on 2-23 (Robinson)
- 11780 ENGLAND BBC Eu Svc; 1115-1230 FF, //809, 6125, 9680, 15435, (Wootten-Morocco)
- 11785 BRAZIL R Guabiá; 2149 PP, nx, (Wootten-Morocco); cf March LR rept of R Maud should have been 11885 (Lohe)
- 11790NF NETH ANT TWR; 0200-0216 SS, rel px, good (Earhart 3-23)
- 11790 VATICAN VR; 1515-1525 EE, Sacred Heart px, //9550, 15155 to SEA, India, fair, (Wootten-Morocco, Word)
- 11790 USSR RM; 1530 RR, (Wootten-Morocco)
- 11790 USA AFRTS Bethany; 0030 EE, servicemens messages, good (Brown)
- 11795 CANADA DW via Sackville; *2140 PP to Brazil, 2300 SS, //9545 to 2300, (Padula-A)
- 11800 CANARY IS RNE; 2025 SS tlk, ID, good (Ross)
- 11800NF ITALY RAI; 2050-2130 II to A/NZ ex 11905, 3-18 (Padula-Australia)
- 11805 USA AFRTS Delano; 2320 EE, hockey game, QRM de RSA, fair (Brown)
- 11805NF BELGIUM RTB; 2045 FF, nx, ex 11800, xed VoA Tinang, new 250 kw?, (Padula-A, 3-18)
- 11805 BRAZIL R Globo; 2215-2302 PP, tlk, mx, nx, ID, fair (Hermann, Zilmer)
- 11810 ITALY RAI; 2035-2045 II, IS, ID, poor in heavy QRM, (Fino 3-31)
- 11812.3 ALGERIA RTVA; heard once this freq in AA, moved back to 11810, (Robinson)
- 11815NF NETH ANT TWR; 0030-0130 EE to Asia, ex 9735, (Padula-Australia 3-16)
- 11815NF USA WYFR; 2220 EE, rel px, (Padula-Australia 3-10)
- 11815 BRAZIL R Brasil Central; 1505, 0020, 0125 PP, pops, sports, ads, IDs, poor to fair (Zilmer, Wootten-Morocco, Burlew)
- 11815 PORTUGAL RFE; 2050-2120* Hungarian, nx, cmntry, poor to fair (Fino 3-31)
- 11820 MOZAMBIQUE RCM; 1040-1100 PP, gongs, ID, weird propagation 3-19, (Padula-A)
- 11825 TAHITI RT; 0220, 0420-0510 FF/Tahitian, tlks, mx, fair (Earhart, Buxton, Zilmer)
- 11833-5v URUGUAY R El Espectador; 2340-0230* SS, ID, mx, ads, nx, fair (Pitts, Collier, Schnabel, Earhart)
- 11834.2-35v HAITI R 4VEH; 1500, 1700-1710 EE, 2130, 2230-2303* SS, rel px, ID, tx trouble at times, (Burlew, Wootten, Padula, Strickland, A. Smith)
- 11835 SRI LANKA VoA; 1800-1815*, jazz, EE ID, poor (Lineback 3-30)
- 11850NF USA UNR via Dixon, EE to A/NZ 0845-0900, ex 9565, (Padula-Australia 3-23)
- 11850 INDIA AIR; 1225-1235 EE, px sched, nx, fair (Zilmer 3-18)

- 11850 AUSTRALIA RA; 2153 EE to east Asia, Japan, N. Guinea, fair (Ross)
 11855 USA WFR; 0136 SS, rel px to SA, (Wootten-Morocco)
 11855NF BELGIUM RTB; 2215 DD nx, ex 11810, xed CBC-Sackville, (Padula-Australia 3-16)
 11860NF SPAIN RNE; *2200-0400* SS to Americas, tlk, mx, IDs, good (Padula, Legge, Estes)
 11860 NORWAY RN; 1800 EE, nx & views px, good (Ross)
 11860 USSR RM; 0215-0230 EE, nx, cmntry, mx, good (J. Davis) Tuhscherer)
 11865 BRAZIL R C de Pernambuco; 2135, 0015 PP, nx, LA mx, sports, fair-good (Zilmer, /
 11865NF ENGLAND BBC; Russian svce not here 2000-2100, (Padula-Australia 3-19)
 11870 SWITZERLAND SBC; 1615-1622 GG, talk, mx, fair (Earhart)
 11870 AUSTRALIA RA; 1328-1345 EE, IS, ID, old US pops, (Tuhscherer 3-25)
 11875NF SRI LANKA VoA; 0220 EE to S Asia w/10 kw, (Padula-Australia 3-23)
 11875 BRAZIL R Soc da Bahia; 0015 PP, sports, fair (Zilmer 3-22)
 11880 TURKEY VoT; 1530 Bulgarian, *2200-2228* EE, TT mx, nx, features, good (Atkins, Burlew, Cwikla, Koziomkowski)
 11880 ARGENTINA R Splendid; noted alternate nights w/tx "San Lorenzo de Almar", SS, mx, sports, no time reported, poor (Zilmer, Robinson)
 11885 PORTUGAL RFE; 2155 lang., tlk, good (Estes)
 11885NF ECUADOR HCJB; 2045 FF to Eu, ex 11945, later moved to 11890 to avoid RFE, (Padula)
 11890NF ECUADOR HCJB; 2000 EE, rel px to Eu, excellent (Atkins), 1900 EE, 2100-2130 GG rel px (Tuhscherer, Estes)
 11890 SAUDI ARABIA BSKSA; 2230-2315 AA ID, good, (A. Smith)
 11890 SEYCHELLES FEBA; 1850 EE, into AA at 1900, (Wootten-Morocco)
 11895-6vNF SENEGAL R Senegal 1840-1910 EE, 2213 FF, Afro mx, tlks, ID, good (Ross, A. Smith, Robinson)
 11895a CLANDESTINE??, unid; 1915 EE, YW mention Liberation Front, petrol industries, jammers at 1930, poor, who? (Atkins 4-7). Not Senegal??-ed.
 11900 S AFRICA RSA; *2230-0242* EE to NA, nx, tlks, mx, fair-good (Earhart, Morlan, Creamer, Koziomkowski, J. Davis)
 11900NF GERMANY (FR) DW; 2000-2010*, ex 7275, GG to Africa, (Padula-Australia 3-28)
 11900 USSR RP&P; 1330 EE, nx, ID, poor-fair (Earhart, Koziomkowski)
 11900a Unid; 0500-0530* lang (African?) Afro mx, chants, fair to good (Brown)
 11900 NIGERIA VoN; 1930 EE, ID, tlk, poor (Pitts 3-24)
 11905 CHINA RP; 0140 EE, disc of films, fair to poor (Morlan)
 11910 CUBA RHC; 0150 EE, cmntry on S Africa, P. O. Box px, excellent (Morlan)
 11910t BRAZIL RTV Gaucha; 0100 PP, ads, jingles, US r&r, pops, F-G (Brown), list 11915.
 11910 ALGERIA RTVA; 1900-1925 EE, nx, assorted mx, ID as R Algiers, (Estes) Earhart)
 11915 ECUADOR HCJB; 0031, 0215-0255 EE, mx, ID, freqs, rel px, fair (Koziomkowski, /
 11920 SPAIN RNE; 1322, 1644, 1705-1750, 2200 SS, nx, mx, ID, cmntry, good (McArdle, Fino, Earhart)
 11920 IVORY COAST RTVI; 1955 EE, 2345-0000* FF, tlk, s/off w/NA, E-G (Creamer, Earhart)
 11925 SPAIN RNE; 0100 EE, mx, good (Brown)
 11925 BRAZIL R Bandeirantes; 2240-0200 PP, mx, ads, fair to good (Padula-Australia, Wootten-Morocco, Collier, Buxton, Zilmer, Cwikla)
 11925 UZBEKH SSR R Tashkent; 1220-1228* EE, 1423 ID, mx, mailbag, local history, orch mx, poor to excellent (Ross, Perdue)
 11925 GERMANY (FR) DW; 2345 SS, features, excellent (Brown)
 11935 BRAZIL R C Paranaense; 2200, 0035 PP, Brazilian mx, distorted, (Estes, Collier)
 11935 PORTUGAL R Nac; 0255 EE, tlk, cultural px, fair (Ross)
 11935 S AFRICA SABC; 0500 EE, ads, mx, HS, fair (Brown)
 11935 SPAIN R Liberty; 2155 RR, tlk, excellent (Estes)
 11940NF CANADA RCI; 2330-2350 PP to Brazil, nx, mx; 1902-1921 FF; 1100 EE; moved here to escape Peking, fair to good (Fino 3-16, Earhart 3-22, Treibel 2-18)
 11940 ROMANIA RB; 1302-1310 EE, nx, light QRM from a LA, good (Perdue 3-16)
 11940 LIBERIA ELWA; 2000 EE, rel nx, fair (Zilmer 3-24)
 11940 SINGAPORE RS; 1400 to 1630* EE nx at 1530, mx (classical on MWF), does not mention //5010, announces //5052, usually good (B. Davis)
 11945 CANADA RCI; 0115 EE, nx, wx, sports, cmntry, features, fair (Brown 4-7)
 11950 BRAZIL R Min da Educacao; 2200-0140 PP, class mx, tlk, ID, F-P (many); 0900 PP ID, hrd via south polar path, rare here, (Padula-Australia 3-19)
 11955 MOROCCO VoA Tangier; 2000 EE ID into Czech, poor (Atkins)
 11955NF ETHIOPIA ETLF; 1930-2015 EE, moved here from 11960, (Legge)
 11960 ETHIOPIA ETLF; 1950-2015* EE, rel px, tlks, fair to poor (Agner, Atkins)
 11960 ISRAEL IBA; 2030 EE, xed NHK, (Padula-Australia 3-18)
 11960 GREECE VoA Kavalla; 1630 Czech, 1730* EE ID, fair to good (Cress, Pitts 3-23)
 11965 RWANDA DW Kigali; *2030 GG nx, EE ID, fair (Koziomkowski)
 11965 GUINEA LV de la Rev; 0015 lang, tlks, FF ID at 0127, mx, fair (Earhart, A. Miller)
 11965 UNID African; 2300 Afro lang, continuous Afro mx, fair (Zilmer 3-30). Above?-ed.
 11970NF AUSTRIA ORF; 1245 EE, Rept frm Austria, to EU, ex 11860, (Padula-Australia 3-18)
 11970 CUBA RHC; 2330 SS, nx, wild mx, QRMing RSA, poor (G. Miller) K-ski)
 11970 S AFRICA RSA; 2323, 0030 EE, mailbag, DX corner, mx, nx, F-G (Brown, G. Miller, /
 11970 TUNISIA RTT; 1315-1321, 1812 AA, cbants, tlks, AA mx, fair (Earhart, A. Miller)
 11975 S AFRICA RSA; 0210-0240 EE, ID, hrd on 4-5, back on 11970 4-6, poor (Earhart)
 11990 CZECHOSLOVAKIA RP; 1730 EE, nx, ID, poor (Koziomkowski)
 11990NF CANADA RCI; *2200-2230* Eu & No svcs here, this freq not announced, (B. Davis)

- 12000 AUSTRALIA VNG time sta; 2208, 0730 EE ID, time info, poor (Ross, Hohnstein)
- 12000NF ISRAEL IBA; 2040 EE nx, 3-18 (Padula-Australia)
- 12005 EGYPT R Cairo; 1930-2010 AA, *1500 Swahili to Africa, ID, tlks, mx (Fino, Wootten)
- 12020 USSR RM; 2030-2130 FF/EE, African svc, ID, IS, nx, mx, fair (Fino 3-14)
- 12025NF ISRAEL IBA; 2035, 0500 EE nx, (Padula-Australia 3-20, 3-24)
- 12040 ENGLAND BBC; 2200 EE, Faulkland Is svc, nx, mx request px, G, //9915 G, (Mayer 3-31)
- 12040 USA VoA unid; 1645-1735 EE, US pops, ID, spur or relay?, fair (Earhart 3-22), 6020 not on at this time so not harmonic.
- 12080 CLAND (VENEZ) R Euzkadi; 1830-1855, 2030-2100* SS/Basque, tlks, IDs, EE ID, could hold inspite of jammers even in Morocco, //13250 not hrd, (Wootten-Morocco, Collier, Atkins, Strickland)
- 12095 ENGLAND BBC; 0430-0445, classical mx, fair to good (J. Davis)
- 13250 CLAND (VENEZ) R Euzkadi; 2030 SS/Basque, nx, tlks, (Schwarz)
- 14970h ECUADOR R Pillaro; 3x4990, (A. Smith 4-5). Sure about this??-ed.
- 14995 USSR R S Atlantika; 1230-1600 RR //15150, 15305 (except sometimes at 1400 when 15150 & 15305 carry other px, both px hrd on 14995 (two txs?). 14995+155=15150+155=15305??? (Legge, Burlew)
- 15012-5v N VIETNAM VoV; EE hrd *1300-1320, 2135 KK, cmntry, F-G (Shackley, Burlew, Bowlsby)
- 15060 CHINA RP; *0200-0255* EE, nx, cmntry, mx, 0136 EE drama, F-G (J. Davis, Jones)
- 15080 INDIA AIR Bombay; 1800-1900, nx, sitar mx, tlks, (Robinson)
- 15090NF CANADA RCI *1630-1700* EE/FF, nx, sports in both langs, unlisted, good (Zilmer)
- 15100 ISRAEL IBA; 1210-1225 FF, *2000-2043* EE, nx, tlks, F-G (Earhart, Atkins, Estes)
- 15105 JAPAN NHK R Japan; *2300-2330* , *0200-0230* EE, nx, cmntry, ID, mx, poor-good, //9560, (J. Davis, Earhart, Morlan, Ross)
- 15105 CYPRUS BBC relay; *1645 EE, poor, quick f/o, (Word 3-12)
- 15105 ASCENSION IS BBC relay; 1730-1740 EE, ID, piano mx, QRM de jammer/15100, F (Burlew)
- 15105NF SWEDEN RS; 1233-1257 EE, tlk, nx, fading, poor, QRM, (Ross, Perdue 3-16)
- 15110 MALAGASY REP RN; 2000 IS, FF ID, FF px, excellent (Estes)
- 15110 CZECHOSLOVAKIA RP; 1610 EE, Weekend Mx Box, //17840, to Africa, (Wootten-Morocco)
- 15110 N ZEALAND RNZ; 0046-0100, 0215, 0406-0435 EE, sports event, mx, poor to fair, (Zilmer 3-23, Cress, Earhart 4-3)
- 15115 ECUADOR HCJB; 0200//9560, 11915 EE, 1530 EE, rel px, good (Morlan, Brown)
- 15120 FRANCE ORTF; 1355-1430, 2125 FF, mx, nx, mourning for Pompidou, G (Earhart, Brown)
- 15125 USA KGEI; 1110-1117 SS, nx, mx, good (Atkins)
- 15125 MEXICO R Mex; 1328-1345, 2345 SS, LA mx, tlk, F-G (Jones, Earhart, Ross)
- 15125 TAIWAN BCC; 0200 EE, nx, cmntry, mx, //17720, fair (Zilmer 3-20)
- 15125NF BELGIUM RTB; 0710 DD, nx, ex 11915, (Padula-Australia 3-16)
- 15130 GREECE Athens; 1400-1500 Greek, good (Legge)
- 15130 GERMANY (FR) R Liberty; IS, mx, RR ID & nx at 1800, QRMd out at 1820, F (Agner)
- 15130 USA WYFR; 2145-2200 EE, rel px, to Brazil, fair (Earhart)
- 15135 BRAZIL R Record; 2330 PP, tlk, mx, audience clapping and laughing, fair (Zilmer)
- 15140 CUBA RHC; 2117-2130 EE, VoV px, excellent (Brown, McArdle)
- 15145 SPAIN RNE; 1945-2005 SS, IS, ID, px armts, SS mx, QRM, fair (Fino 3-8) Zilmer)
- 15145 BRAZIL R Jornal do Comercio; 2200-2330 PP, ID, tlk, //15155, mx, F (Earhart, /
- 15150 CHILE LV de Chile; 2100-0215 several langs, (too) many IDs, tlks, P-G (many)
- 15155 BRAZIL R Tupi; 2205-2330, 0015 PP, tlks, nx, mx, soccer, G (Earhart, Keating)
- 15155 FRANCE ORTF; 1530 EE nx then FF ID, FF mx, fair (Zilmer, Schwarz)
- 15155 S AFRICA RSA; *1900 FF, IS, good (Ross)
- 15165 DENMARK RD; 1358 IS, EE/Danish ID, px in Danish at 1400, fair (Ross)
- 15170NF ECUADOR HCJB; 2328, 0130, SS, 0315-0330* lang, rel px, ex 9745 at 0130, good, Earhart, A. Miller, Padula-Australia)
- 15170 TAHITI RT; 0320-0404 Tahitian/FF, local mx, pops, fair-good (Brown, Earhart)
- 15175 NORWAY RN; 1600-1615 EE, nx, mx, Norway this Week, fair to good (Zilmer, Ross)
- 15185 USA WINB; 2100-2130, 2215-2245* EE, rel px, class mx, mailbag type px, fair (McArdle, Buxton, Earhart, Ross)
- 15185NF GERMANY (FR) DW; 1330 CC svce now here ex 9650, (Padula-Australia 3-16)
- 15185 FINLAND RF; 1245-1301* EE/lang ID, 1403 EE px, 1800 EE px, poor-fair (Ross, Cress)
- 15190 CONGO RTVC; 1710 FF, talk, Brazz. mentioned many times, fair (Wallace)
- 15195 MALAGASY REP RN; 1225, usual RN IS w/drums interspersed, local ID at 1229, nx by YW in lang, fair (Cress). RN refers to relay as on Madagascar, the island rather than in the Malagasy Rep.
- 15200 UNID; 2010-2035 EE, African mx, ID not heard, poor (Earhart 3-27); 1710 AA dialogue, fair (Wallace)
- 15200 AUSTRIA ORF; 1830-1900 EE, EE nx, tlk on Austria, poor (Cwikla)
- 15200NF BELGIUM RTB; 0715 FF, nx, pops, ex 11815, (Padula-Australia 3-16)
- 15210 VATICAN VR; 1623 EE, nx, ID, fair (Kozlomkowski)
- 15220 USSR RM; 1100 EE, nx, press review, px abt Siberia, to SEA, (Wootten-Morocco)
- 15240 SWEDEN RS; 1830 EE, nx, Panorama, SWCDX to Africa, (Zilmer 3-19)
- 15245 ZAIRE LV du Zaire; 1720-1831, 0015-0100 FF, Afro mx, some tlk, F (Earhart,Wallace)
- 15250 USA VoA Delano; *2200 EE px, good (Ross)
- 15260 ENGLAND BBC; 2045 EE, tlk abt France, good (Morlan)
- 15265 USSR RP&P; 1325 EE, M&W tlk, ID, fair (Perdue 3-16)
- 15270NF JAPAN NHK R Japan; 2345 EE nx to NA, ex 11725, poor (Zilmer 4-3, Padula-Australia)
- 15280 USA KGEI; 2120 SS, rel px, fair (Brown)

- 15285 ROMANIA RB; 1130 SS, nx, mx, (Wootten-Morocco)
 15285 CUBA RHC; 1930 SS, ID, mx, tlks political, good (Brown)
 15288 MOZAMBIQUE LMR; 0730-0745 PP, film themes, good (Padula-Australia 3-20)
 15290 ARGENTINA R el Mundo; 2045-2105 SS, futbol, fair (Lohe)
 15305 SWITZERLAND SBC; 1700 SS, tlks, IS, some QSB, fair (Wallace)
 15320 NETH ANT RN; 2315 SS, mailbag px, tk by OM, fair (Brown)
 15320 AUSTRALIA RA; 0233-0300 EE, interviews, nx, good (McArdle, Earhart 3-21)
 15325 CANADA RCI; 2050 EE, nx, ID, *0000-0057* SS, nx, cmntry, tlk shows, IS, not in sched, very good (Morlan, J. Davis)
 15325 SEYCHELLES FEBA; 1230 EE s/on for Tamil px, QRMed by Sackville after 1330, fair (Legge)
 15330 USA AFRTS Bethany; 2050, QRM from Sackville also, 2310 EE px, good to excellent, (Brown, Morlan)
 15335 S KOREA R Korea; 0300 EE, nx, poor (Zilmer 3-18)
 15345 INDONESIA RRI Jayapura; 0130-0300 Sunday daytime svc w/modern Indonesian pops, strong, (Padula-Australia 3-17)
 15345 NORWAY RN; 1600-1630 EE, nx, listeners corner, //15175, heavy QRM, fair (Cwikla)
 15365 CANARY IS RNE; 0330-0350 SS, SS mx, some pop type in EE, IDs, F-G (Earhart, Brown) *2030-2114, fading, local ID, QRM de France Inter, mx, nx, (Hermann 4-2)
 15370NF TAIWAN VoFC; 0215 EE, to NA, ex 15345, (Padula-Australia 3-16)
 15380 RWANDA DW Kigali; 2136-2240 GG, tlk, mx, nx, ID, good (Pitts 3-3)
 15385 ITALY RAI; 1845-1857 II, II px to SA, mx, IS, good (Earhart 3-29)
 15385 ETHIOPIA ETLF; moved here from 15365 for 1915-2000 FF px to west Africa, (Legge)
 15390 ENGLAND BBC; 1450 Eu svc, Czech into Polish at 1500, (Wootten-Morocco)
 15415 KUWAIT RR; 1629 s/on to 1830 EE, r&r pops, ME nx, wx, request px, poor to good, (Earhart, Cwikla, Pitts)
 15415 BRAZIL R C Riberao Preto; 2334, 0130-0230, PP, pops, dance mx, soccer, via S Pole to Australia, (Padula-Australia, Robinson)
 15425 GREECE R Athens; 1300-1400 Greek, QRM from DW, fair (Legge)
 15425 HOLLAND RN; 1505 EE, Happy Sta, //6045, (Wootten-Morocco)
 15435 ENGLAND BBC; 1115-1230 FF, Eu svc, //809, 6125, 9680, 11780, (Wootten-Morocco)
 15435 TANZANIA RT; 1732-1817 EE, local jazz, ID, IS, drums, TC, px in vernacular for Comoro Is at 1815, (Lohe)
 15440 USA WYFR; 1930* EE to Eu, 2230-2245 EE, rel px, mx, fair-good (Morlan, J. Davis)
 15445 JAPAN NHK R Japan; 0035 EE, poor (Ross)
 15445 BRAZIL R Nac; 2315 SS, 2305-2355 EE, 0003 SS, 0009 PP, nx, ID, QRMed at times, poor to fair (Webb, McArdle, A. Miller, Earhart)
 15460NF SAUDI ARABIA BSKSA; 1500 AA, ID, singing, //11950, fair (Mayer 4-6)
 16065 GERMANY? (FR) RFE; SSB feeder with px in several langs, from Germany to Portugal probable, 1720-1805, (Wootten-Morocco 3-11)
 17705 CUBA RHC; 2120 EE, political tlk, LA mx, good (Brown)
 17720 TAIWAN VoFC; 0215 EE, cmntry, mx, BCC ID, poor (Zilmer)
 17735 PORTUGAL RFE; 1750-1850 lang, ID, several langs, political tlk, fair (Fino)
 17735 CUBA RHC; 1410 SS, jammed by Chile?, political tlk, nx, mx, good (Brown)
 17750 PHILIPPINES UNR via Poro; 0230-0245, EE to SEA, NF ex 17830, (Padula-Australia)
 17770 N ZEALAND RNZ; 0245-0305 EE, cricket game, //15110, poor-fair (Earhart 3-22)
 17790 ALGERIA RTVA; 1745 AA, chants, ID, poor (Koziomkowski)
 17795 AUSTRALIA RA; 2325 EE, ID, mx px, excellent (Creamer)
 17810 HOLLAND RN; 1900 RR, mx px, EE ID at 1950, good (Creamer). RR?-ed.
 17820 CANADA No Svc, & Armed Forces Svc; 1615-1715 EE/FF/Esk, ID, IS, Amnts, nx, cmntry, good, (Fino)
 17830 PAKISTAN RP; 0340 EE, local mx, good (Pitts 3-20)
 17830 NETH ANT RN; 2005-2040 FF, IS, ID, mx, cmntry, QRM, fair (Fino)
 17875 LIBERIA VoA Monrovia; 2345-0000*, mx px, excellent (Creamer)
 17880 ECUADOR HCJB; 1510-1530 EE, ID, amnts, rel px, weak and fading, (Fino)
 21470 EGYPT R Cairo; 1410-1458* Thai lang to SEA, combination of western and AA mx, perhaps moved from 21465, (Wootten-Morocco)
 21525 USA WYFR; 1720-1735 EE, rel px & mx, fair (Earhart 3-20)
 21550 ENGLAND BBC; 1740-1745 EE, interview, African px, sudden off after ID at 1745, good (Earhart 3-20)
 21570 NETH ANT RN; 1715 EE ID, px in lang, good (Creamer)
 21650 GERMANY (FR) DW; 1700 GG ID, poor (Creamer)
 21700 PORTUGAL R Nac; 1643-1725 PP, pops, little tlk, 6 tone time signal at 1745, gong at 1715, //15125, fair (Cress)

Thanks for your support of Log Report. We are getting more reports for the higher frequencies now that the winter DX season is over. Why don't YOU send us a report next month. Good DX and

73 from Jerry A. Lineback

FLASHSHEET

The Flashsheet is published twice monthly by NASWA, Box 8542, S. Charleston, W. Va. 25303

MAY - 1974

Freq: KCS

Time: GMT

AL NIBLACK, Editor, 420 Shelby St., Vincennes, Ind. 47591 DEADLINES 10th & 20th Month

ANGOLA 11875 En Oficial, Luanda, observed in EE, 1500-1545, fair lvl, 4/22. (August Balbi, Cal.)...En Oficial, 11875, good lvl with pops and light music, 1510-1520. An ID at 1514 by woman as, "Toi Portugal...Luanda", during FP session, repeated ID 1520. (Al Niblack, Ind.)

ARGENTINA 9710 R. El Mundo from 2315-2340, news by man and woman, over RAI. Next day RAI dominated. (John Tuchscherer, Wisc.)...(TEXT) 9710 R. El Mundo 0115 SS sports to 0200A, mentions of Buenos Aires, noted 4/3, only. (Ernie Behr, CANADA)...9740 R. Splendid LRS1, heard at 2230, SS sports, 4/10, though poor sigs. Vy seldom loggable. (Bob Zilmer, Wisc.)

AUSTRALIA RA, Shepperton, 11765//9570, fair lvl with "DXers Calling", 0730, on Sundays. (August Balbi)...9700 RA, Darwin: Indonesian 2355, "Crocodile Rock"(Elton John, you old timers) past 000L, DW IS audible underneath, 2359. RA via long path. (Bob Hill, Cal.)... 9730 Low power Iydnhurst xmtr via long path, pips 2300, IS 2326, EE ID, said back again to-morrow; gave Saigon local times. Off 2327, vy weak lvl. (Bob Hill)...11875 RA in Thai at 1430 S/off, mixing with SS splkr, making tough copy. (Mike Agner, N.J.)

AUSTRIA 6155 ORF, 0350 EE talk by man and woman. (CCDXA - Messers Steve Wallace, Doug Burlew, Pa.)

BHUTAN (??) Before every DXer breaks all existing speed records dashing to the receiver, I merely want to remind you folks that old friend the Spinkins, JKT, Urunchi, has been operating 7050 for years. Another one is Peking which dashes hither and yon in an effort to get away from USSR jamming. I'll try again myself. (Bob Hill) (Could this be another Nibi-Nibi, Editor)

BOLIVIA 9606.5 CP97, R. Pirai, Santa Cruz: 0000 to 0158 wipeout by DW, IDs 0104, 0041, 0149, in SS, latter clear with Onda Larga ID too. Vy difficult to log, but worth the effort! (Bob Hill)

BRAZIL 9595 This is R. Cultura da Bahia, not as reported in Log Report as R. Rio Mar / Hill) R. Rio Mar is 9695...6155 R. Cultura da Bahia is also noted on this new fgy. Heard best @ 0930 in PP. (Credit both to Bob Zilmer)...This one, R. Cultura da Bahia, I repeat is now also using 6155 new fgy, 0000 music and PP IDs, //959A. (Ernie Behr)...4915 R. Dif Macapa, fair lvl with music, full PP ID, to 0302 S/off. (Ernie Behr)...11785 R. Guaba noted 0125 with anncts, pops, at surprisingly good lvl...11815 ZWZ24, Goiana, heard 3/31, in PP at 0140, vy brilliant signals to 0200 tune out. Recordings and anncts in rapid PP. (Credit both to Grady Ferguson, S.C.)

BRUNEI 7215 RB in EE News till ending EE prgmsing 1430, then GSTQ, full ID. (August Balbi)

CHINA (PR) 8345 RP weak lvl 1507, woman in Thai or Burmese Languages. (Bob Hill)

CANADA RCI EE Svc Programs: NA 1 and Caribbean daily; 0100-0157 on 11940//9755//6085. NA 2 daily; 0400-0457 on 9655//6135. NA 3 daily; 0500-0557 on 9655//6135. (Ed Insinger, N.J.)

COLOMBIA 5950 R. Super de Medellin with SS ads, excited R. Super IDs, easy listening lvl, is recently new. (Mike Agner) (NO time quote, Editor)

ECUADOR 3240 R. Turismo, Otalava, now being reported Stateside, is said by Clayton Howard of HCJB, to be using 400 watts instead of listed 200 watts. (Bob Zilmer)...3390 R. Zazaacay with Andean music, SS talk, at 0310, poor to fair lvl. (CCDXA)...in talking with fellow DXer Rich Keating, I believe his, "Voice of the British, etc"(see a previous FS, Editor), is a program possibly carried by HCJB, 15115, rather than Keating's quote of 15120A. (Mike Agner)

GALAPAGOS IS (FLASH) Though reported in FS in Mid-March on 3520, at 2330, Clayton / Agner) Howard reports that he has not heard them on the air at all. He reports they burned out their power supply, repaired it, only to burn it out again. Ordered a new 5kW FS from the USA, with delivery in two to three months. Rumor says they may go to 49 MB then. (Bob Zilmer)

GERMANY (W) 5965 DW, *0120-0220*, in EE, beamed to Asia on unlisted fgy. (Bob Zilmer)

GUYANA (FR) ORTE, Cayenne, with FF music and USA oldies, 3385, 0130*. Some QRM. (Mike Agner)

HONDURAS 4820 R. Catolies (??), 0433 music, many IDs, ads and cuckoo calls to 0638*, 3/25, at strong lvl. Any info on this one, anybody? (Ernie Behr)

HUNGARY 6165 R. Budapest, 0100, with EE News and Science Magazine. (Bob Zilmer)

INDIA 9705 AIR, Delhi, long path 0120, IS 0129, pips 0130, smothered by VOA 0132. (Bob Hill)

INDONESIA 4939V (JAVA) RRI, Bandung, per WRTH/74) noted till s/off (once 1519, another 1523). Usual RRI stuff, but weak modulation...5938 (SUMATRA) According to Victor G via RADX, my unID here is Medan. The schedule fits. (Bob Hill, credit for both items)

ISRAEL 9815 Another new fgy for IBA, Jerusalem with Israeli pops 0235//7395. (Bob Hill)...9495 Picked up Israel this afternoon at 2000, quite clear. All Israeli News until 2030. Gave the following fgy's: 15000, 12000, 10250, 9815, 9495, and 7395. (Miss Sara K. Stillman, N.Y.)... IBA heard at 2300 on 9815 (ex 9785); 15100, 1130 in EE; 15130, in EE; 12000, IBA with IS, at 1730, under USSR; and, 7395, 9009, 9495, are heard regularly at various times and languages, sometimes with strong signals. (Bob Zilmer)

KOREA (S) On 4/13, Radio Korea on new 11925, ex 15435, fair lvl, at 0900; EE news, ID, in parallel with 9640. (August Balbi) (11925 was used a number of years ago, Editor)...9640 Radic Korea, 1100-1130*, in EE news, cmtry, music, at fair lvl. (Bob Zilmer)

MALAYSIA 15435 RBCFES, Tebrau, S/on 2300, then EE news. On 11955, S/on 1500. (August Balbi) ...On 3/26, the BEC WS was audible from two xmtrs simultaneously: London to the Americas, Tebrau to So Asia, at 0020 tuning, both on 9580. With London arriving short path and Tebrau RBCFES, long path. The echo was distinct and it was difficult to say which signal arrived first, but I believe it was Tebrau. Letter left the air at 0030, London continued. (Bob Hill)

MEXICO 6020 XEJW, Vera Cruz, 0150 music and SS ads, clear till 0230...6090 XEJMT, Ciudad Mante, 0200 native music and ads in QRM...6185 (TENE) La Voz del Maestro, 0200 SS drama, 0245 orchestra music to 0305*, varying to 0320*, noted weekdays only. ID unreadable but mentions, "capital de la Republica". (Credit all to Ernie Behr)

NORWAY 6180 NRK, Oslo, Norwegian ID 0255, fluttery but not a bad signal by European standards out here. WRTH/74 lists 6185 as fgy; listed //s 9550 and/or 9645, inaudible. (Bob Hill)

PAPUA 3360 R. Milne Bay from 1215 tuning with light and LCL music-unique in that it was the only Oceanic station loggable by me on 3/27, on 90 MB. (John Tuchscherer)

POLAND (Repeated from Mid-Month PS because of importance) Polish Pathfinders special NASWA test is delayed till 1 June 1974; times will be 1430, 1830, and 2300 GMT. Fgy will remain 6850 kcs, with 30 minutes of EE. 2300 time frame is just passable for ECNA. Will try to convince them to make it later. (Ed Shaw, Va.) (2300 in June is way too early for medio USA, Editor)...Polskie Radio EE to NA at 0200 on 15275//15120//11800//11815//11810//11955//9675//9540//9525//7285//7270//7145//7125//6135//6095//5995. Whew!! (Ed Insinger)

SARAH 4970 KB with EE news at 1430, some QRM, at times relays Kuala Lumpur. (August Balbi)

SARAWAK 7160 RM with EE news from Kuala Lumpur at 1430, //4950. (August Balbi)

SRI LANKA 11845 VOA Relay, Colombo, EE news 1700, good signal. (August Balbi)

USA WYFR Family Radio News sends the following: "KGEI, the LA Svc of the FEBC, San Francisco, has inaugurated a new Asian Svc to China, Russia, Japan, and selected S.E. Asian areas. The new sited is the result of the FCC's lifting of a twelve year freeze on international broadcasting. FEBC's Carl Lawrence states that KGEI will boast in 4 major languages on its 50kW transmitter, with the power being boosted to 250kws in a few weeks". (Ed Insinger)

USSR 5750 Unlisted Soviet tuned 1448; orchestral music followed by Russian vocals, pips 1500. Weak fluttery sig suggests central Asia QTH. (Bob Hill)...4635 (TADZHIK SSR) R. Dushanbe fair long path sig 3/22, from OI47; children's chorus, woman in RR. Then silence 0148-50, then talk on international relations. Silence again till 0200, when pips, and into Moscow Relay once more. (Bob Hill)...15445A R. Moscow in EE to S.E. Asia, 1500. WRTH lists about 7 sites. What about this one? (Mike Agner) (In QSLing report for May 13, 1973, 15.45 mos (their quote) at 1500, Mrs. S. said this was RM's boast to So-East Asia via Serpukhov, Editor; there is only one way to be reasonably positive (though there are a few exceptions), and that is to get Mrs. S. to mark in the transmitter sites. RM effects many quarterly changes. The ITU listings are reasonably accurate, but that's all they can be. Again, get a QSL, Editor)

SPAIN Just noted R. Nac de Espana in SS on 11860, in parallel with 11775, in the 0000-0600 time slot. I can conclude that this is a new fgy, 4/9. (Ken Earhart, Pa.)

SWEDEN Effective May 5, RS will effect changes as: To ECNA, 0000-0130, 11805; WONA, 0130-0330, 11955; to M.E., 1830-1930, 11790, all via Horby Transmitters. To E. Asia, 1230-1330, 17840; and, 2015-2115, 11970; to S. Asia, 1400-1530, 17770; to H.E., 1600-1830, 15240; and to Africa, 0500-0715, 17770, all via Karlsborg transmitters. All the rest of the fgy's remain the same. (Bob Zilmer)

TAIWAN 9685 Taipei, 2300-2400 Chinese heard; WRTH/74 says 2230-2330. Mixes with USSR. (Bob VENEZUELA 3265 Though listed as seemingly inactive, R. Nirgua heard with ID and / Hill)

LA music at 0100 tune 3/24. Good lvl, but UTE splash. (John Tuchscherer)

YEMEN ARAB REPUBLIC R. Sanaa, 5805, QSLed with ppod quickly. Verie signer's name is illegible but country's seal stamp is authoritative and quite official, in Arabic. (Al Niblack)

YUGOSLAVIA 15240 R. Belgrade, 1530 in EE news, local music. (Bob Zilmer)

ZAIRE 9666V Voix du Zaire, 2215 Afro talk and music, //15245. (Ernie Behr)

ZAMBIA 11850 Radio Zambia, 1300 EE prgm and music to 1415 abrupt S/off, often good lvl, best chance to hear Zambia now. (Ernie Behr)

UKRAINES INDONESIA 3165 From 1214, very weak with man in something; theme from "The Godfather" at 1217 and again at 1229. Too much line noise for an ID, possibly Indonesia. (Bob Hill)...4709 NORTH VIETNAM? For many weeks a station regularly on this fgy from as early as 1027 till 1530V s/off. Prgrmng is typical of Vietnamese stations, particularly the regionals. Seemingly has a dual of 7374. (Bob Hill)...7226V An AA splr found S/on 0335, 3/26, 3/28, ID 0338-0340. Bad QRM from DW, Kigali. This one has an amazing number of possibilities, as listed by WRTH and PHIS. (Bob Hill) (Bob, try Algeria on this one, Editor)

CLANDESTINE 4494 Possibly Pathet Lao here 1345 past 1400 with Oriental talk and music. Other possibility is the United Lao Races station. (Bob Hill)...15275 R. Idbertacao fair with African talk and anthem to 2323 S/off, 4/8. (Ernie Behr)

HAPPENINGS: DX Editor G.E. Wood of Radio RSA, South Africa, informs us that material from the NASWA PS will be used with credit on his DX Program, "DX Corner". (Thanks, Editor Wood, its pleasant to have you with us, Editor Al)...With distinct pleasure we announce that Messers. J. C. Mathews, Jr., Manager-Marketing; and, Mr. R. J. Orwin, Manager of Engineering, at Hallicrafters, have requested to become members of NASWA, and are now duly enrolled in the Club. (Al Niblack)

MARCH 1974: SUNSPOT COUNT AS FURNISHED BY THE ZURICH OBSERVATORY, 4-5-74-1-25, 2-16, 3-16, 4-17, 5-18, 6-19, 7-20, 8-16, 9-20, 10-30, 11-37, 12-38, 13-30, 14-42, 15-37, 16-23, 17-20, 18-32, 19-20, 20-9, 21-16, 22-31, 23-27, 24-21, 25-18, 26-10, 27-9, 28-17, 29-19, 30-25, 31-26 MEAN-22.7 PREDICTED: APR-21 MAY-20 JUN-18 AUG-17 SEP-16 (Grady Ferguson)

ACKNOWLEDGEMENT: To all those reporters that submitted the material to make this issue of the Flashsheet possible. You are most appreciated and welcomed, please keep the material coming. Last minute flash items may be phoned to 882-3976 before 2000 GMT. In closing, suggested as a reference is the newest SWL Address Book, containing pertinent information as to QSL signers at stations, addresses, so on, a total of just under 700 SW stations, authored by friend Gerry Dexter, and available from Gifer Associates Inc. Its a must for QSL seekers...Hank Bennett, SW Editor NNEC, new shortwave treatise book from Tab Books will be available 1st July... To all, good DXing,

THE LAST WORD

by DAN FERGUSON

DANISH SHORTWAVE CLUB INTERNATIONAL and CIMBRER DX CLUB, both of Denmark, have been considering a merger. If approved, the combined clubs would be known as the Danish Shortwave Clubs International, and would continue to publish SHORTWAVE NEWS. For the next two months the clubs are publishing a combined bulletin, in which they have begun to include some offset printed reduced size pages, mainly the loggings sections. The new bulletin, as the old, is one of the best available anywhere. For those wishing to join a European club, we would advise having a look at DSWCI. Information on the club may be obtained from their NA representative, Larry Magne, editor of our Clandestine Bulletin; he'll be happy to send you information.

WHEN WRITING HEADQUARTERS OR EDITORS OF THE VARIOUS SECTIONS OF FRENDX, expecting to receive a reply, the inclusion of a self addressed stamped envelope (SASE) is most appreciated. Thank you.

HELPING HAND Greg Kelley, 108 Archer St., Staunton, VA 24401, has a number of SW books, electronics books, magazines, and parts to sell.

THE BBC

We thought perhaps the following advance information on some of the BBC programs during May might be of interest to the membership. Good listening:

- *THE FOUNDING FATHERS. Four dramatised life-stories of men who built industrial empires. Mon 0230 rep 2130(13th only), Tues 1130, 2130(ex14th)
- *DYLAN THOMAS AND THE BBC "depicts a solid, conventional BBC under Lord Reith trying to come to terms with a wayward, forever penniless Welsh Poet, Dylan Thomas. Besides composing countless poems, many of which he read over the air, he also conceived 'Under Milk Wood', a work of pure radio genius." 25th 0945, 26th 1915, 30th 0030.
- *PICKWICK TRIUMPHANT "This programme is an illustrated account of how the immortal character of Pickwick was created, and traces the book's astonishing rise to popularity." 11th 0945, 1915, 16th 0030.
- *MUSIC FROM SCOTLAND "Jimmie MacGregor continues to introduce the series which brings listeners items from the whole field of Scottish music, whether composed or performed by Scots. It covers all music from folk to classical - with one or two surprises in between." Mondays 2030(ex 27th), Tuesdays 0430(ex28th).
- *VICTOR SYLVESTER - plays your requests. Suns 0430 & 2330, Fridays 1215
- *WORLD RADIO CLUB , Wed 1330, Thur 2030, Fri 2315, Sun 0815..
- *LISTENING POST - a weekly survey of comment from many of the worlds radio stations. Mondays 0145, 0945, 1245
- *FROM THE WEEKLIES - a review of the British weekly Press. Fri 2230, Sat 1115, Sun 0715.
- *BRITISH PRESS REVIEW - survey of editorial opinion in the Press. Daily 0209, 0409, 0509(Sat & Sun), 0609, 1915, 1040(Europe).
- *BOOKS AND WRITERS - reviews of recently published books, and discussions with authors, critics and publishers. Sundays 2315, Wednesdays 1709, Thursdays 1015.
- *FORUM - experts and authorities discuss matters of moment. Wed 2045, Thur 0230, 0945 and 1515.

OVERSEAS POSTAGE RATES We understand some people have been a bit confused concerning airmail rates overseas, after the postage rate hike in March. In fact, when the March FRENDX was mailed, I had a call from the U.S. Postal saying that I would have to come in and pay additional postage on the copies going overseas, or else they would return them for the additional postage. I had to tell the U.S.Postal what their own rates were; I had the information from a branch P.O., but the main P.O. didn't have it!....Here are the rates: To Central America, South America, the Caribbean, Bahamas - 21¢ per ½oz thru 2 oz, then 17¢ each additional ½ oz, Other countries 26¢ per ½oz up to and including 2oz, then 21¢ each additional ½oz...Aerogrammes, air post, and postal cards - 18¢ each....It's all very simple, and if your local P.O. doesn't believe you, have him check his Postal Bulletin under date of 12/20/73.

WORLD OF SHORTWAVE Gotcha! Here we are again plugging the meeting in Columbus, Ohio, on July 19-21, 1974. Many of the top DXers will be there, many of the people whose names you see each month in FRENDX. It will be fun and educational - just like SHORTWAVE LISTENING is, according to one top DXer who will be there....Ed Shaw might even have his cook-stove mailbox there! Be sure to write Randy Minnehan, 975 Chestershire Road, Columbus, Ohio 43204, for details - send along a SASE, it will be appreciated!

This page is included primarily to give Dan Ferguson an opportunity to get THE LAST WORD in!

QSL REPORT



EDITOR
Larry Yaron
P.O. Box 5103
Pittsburgh, PA.
U.S.A. 15206

DEADLINE: 10th of month.

QSL NEWS

A totally new edition of the popular SWL ADDRESS BOOK (compiled by well known Dx'er and NASWA member Gerry Dexter) is now available for 2.95 from GILFER Associates, Inc., Box 239, Park Ridge, NJ 07656

The SWL ADDRESS BOOK is a handy 64 page country-by-country reference listing of just under 700 tropical and international broadcasters; showing correct mailing address, verification signer(s) and coded QSL/verification/pennant policy. The special QSL coding tells about language requirements, average waiting time for a response, type of response, whether mint stamps or IRC's are required and if tape recordings are accepted for verification. Much of the info in this new edition is not available from any other source. Its regular use--coupled with an intelligent approach to report writing--should increase the QSL response for any listener.

PATIENCE DEPT: Dx'er Mike Hardester received a QSL from Radio Fiji (inactive on SWBC since 1972) after a wait of 648 days!!!

NEW ADDRESSES: Radio Nacional de Brasilia has this new mailing address: RNB, P.O. Box 07/0173, 70000 Brasilia, D.K., BRAZIL.

Burma Broadcasting Svc. welcomes reports in English, to: Dir. General Information and Broadcasting Dept., BBS Building, Promé Rd., Rangoon, BURMA. (via MMFS) Radio Cairo announces this new address: P.O. Box 566, Cairo.

La Voz del Huila, Colombia, is a new station belonging to the Super Radio Network. Send reports to: Apartado 150, Huila or to Carrera 5A. No. 6-25, Neiva, Colombia. V/S. is Fernando Segura R., Director.

Bangkok Meteorological Radio: Telecommunications Div., Meteorological Dept., 612 Sukumvit Rd., Bangkok 11, Thailand. V/S. Chote Kliewtong.

A number of extremely fine QSLs received this month. Gregg Calkin verified the rare Azad Kashmir Radio. Ace Dx'er and friend, Dan Henderson has received some really prized QSLs, these include the 1st QSL in North America for RII Pekanbaru on 3460 khz, Radio Chimbu and Radio Northern District. Pine catches Dan!..Ed. In Asia, Peoples Liberation Army Radio has been verified by Scott Reeves. Many QSLs have been received from Bangkok Meteorological Radio, Thailand. Larry Abraham snagged the much prized Radio West New Britain and John Campbell of Switzerland received some interesting Pirate QSLs.

ALBANIA: R. Tirana, 9550, paper QSL w/all data in 3 months for 1 IRC. (Lovitz) 9780, folder card w/all data and sked. in 2½ months seamaile for U.S. mint stamps. They sent some albanian stamps in return. (Fino)

ALGERIA: R.T.A. 6145, card in 4 months for 2 IRCs. (Plum) received sked. only! for FF report and 2 IRCs. A wait of 8 months for nothing! (Abraham) same thing happened to me!..Ed

ANGOLA: Voz de Angola, 9660, full data card w/photo of Luanda from V/S. Dir. Carvalho, 21 weeks for 3 IRCs. (Earhart)

ARGENTINA: RAE, full data globe card in 5 months for EE report and mint stamps. (Paschke) 11710, card in 5 months for SS report and 2 IRCs. (Lineback) full data card in 67 days for EE report and mint stamps. (King)

AUSTRALIA: R. Australia, 9540, wild flower series card w/all data in 28 days for 1 IRC. (Duba) 17795, via Lyndhurst, full data card in 2½ months. (Meehan) 5995, 73's in 73 card in 5 months, no IRCs. (Eichenhorn) 17795/21740, lilies cards in 110 and 60 days. Sent to NYC address. (Nebron) 9660, map card w/all data in 2 weeks, 2 IRCs. (Nomsat)

ABC-Perth, 9610, blue map card of W. Australia in 1½ months air. (Estes) 9610, blue card in 44 days for 2 IRCs. (Lovitz)

ABC-Brisbane, 4920, full data ABC card in 21 days air, no IRC. (Schwartz) VNG Time Station, 7500, folder card w/all data in 16 days, IRCs returned! (Overcamp) 4500/7500, 2 cards w/all data in 2 months air, no return postage. (Eichenhorn)

AUSTRIA: ORF, 15345, full data card and sked. in 1 month, no IRCs. (Lovitz)



RADIO
"SAN MIGUEL"
C. P. 114

Telegram :- AKRADIO



Azad Kashmir Radio

MUZAFFARABAD

Ref. No.

989
20-2-74

Dated..... 20th Feb: 1974.

Mohtram Gregg A. Calkin Sahib,

Aapka Khat mila jis ke Liye Hum be had shukr guzar hain. Hum Khoshi kee saath tasdiq kartain hain keh aap nai hamara station 1334 awi 1400 bajee 3980 Khz par suna. Ham umeed kartai hain keh aap hamari nashriyat suntay rahangay, aur hum ko apni rai se aenda bhi muttla karen ge.

Aapka Mikhlis,

(M. KHALEEQUE)
REGIONAL MANAGER

Mr. Gregg A. Calkin,
P.O. Box No. 1042, GPO,
ISLAMABAD. (Pakistan)

TRANSLATION: Received your letter for which we are very grateful. We are happy to acknowledge that you listened to our program on 3980 khz. We hope that you will continue to listen to our programs and keep us informed of your opinions and views about our programs in the future. Yours Sincerely, M. Khaleeq, Regional Manager.

- BELGIUM:** ORU, 11855, map card w/date and freq. only. Also received sked. and mailbag script in 6 1/2 weeks, no IRCs. (Lobdell) 6055, card w/ date and freq. in 3 weeks, no IRCs. (Earhart)
- BOTSWANA:** R. Botswana, 4845, full data card in 197 days from V/S. Phil Johnson, 1 IRC and EE report. (Gavaras)
- BRAZIL:** A Voz Do Sao Francisco, 5025, QSL in 2 months for PP report and mint stamps. V/S. Garcia De Fatima Oliveira, Secretary. (Barto)
- R. Clube de Teresina, 3385, letter airmail from V/S. Francisco L.C. Branco Neto, Director de Prog. 3 months. (Dexter)
- R. Guarani, 6175, no data globe/mike card in 5 weeks for PP report, 1 IRC. (Barto)
- R. Nacional de Brasilia, 11720, full data color card and pennant for EE report and mint stamps. (Abraham) 15445, card w/all data, pennant, sked. and personal letter in 5 weeks for EE report, mint stamps. (Lobdell) full data card and letter in 8 weeks, no return postage. Letter sez: 250kw transmitter should be in operation in 2-3 months.
- BULGARIA:** R. Sofia, 9700, cards w/out freq. in 27 weeks, no IRCs. (Earhart)
- BYELORUSSIA S.S.R.:** R. Moscow via Orsha-7100, full data card w/site in 6 weeks. (Barto) 7100, card in 26 days. (Wiwla) 5920, card in 33 days for RM report form. (Mayer)
- R. Moscow via Minsk-9660, card w/all data in 6 weeks. (Barto)
- CANADA:** R. Canada International, 9625/11720/9610, cards w/all details in 2 weeks, no IRCs. Later received telephone call from Montreal studio requesting comments, opinions! (Fino) Speaking To the World card w/all data, 3 weeks. (Miller) 6135, card in 1 week, no IRCs. (Eichenhorn) 6085, card in 21 days. (Masterson) 4 weeks. (Meehan)
- CBC Northern Svc. 9625, polar bear card in 1 month, no IRCs. (Lovitz) polar bear card per my request in 3 weeks. (Meehan)
- CFCX, 6005, card in 8 months surface mail. (Estes)
- CPRX, 6070, abstract painting card w/all data in 2 weeks. (Lineback)
- CHNX, 6130, card w/all data except time, 1 weeks for mint stamp. (Nonnast)
- CAPE VERDE ISLANDS:** R. Barlevento, 3930, card and postcard of Sao Vicente for registered PP report and 2 IRCs. 24 days total, 16 days after 2nd f/up. (Campbell)
- R. Clube Cabo Verde, 3985, card in 77 days for EE report and 1 IRC. (Gavaras)

CHAD: RDiff. Nat. Tchadienne, 4904, card w/all data and sked. 40 days for FF report and 3 IRCs. (Duba) card w/all details in 10 weeks, FF report and 2 IRCs. (Lineback) card in 118 days for NASWA FF report, 1 IRC. (Gavaras) card w/all data in 108 days for registered tape report, 3 IRCs. (Pappas) card in 4 months, FF report and 3 IRCs. (Hagen)

CHILE: R. Diego Portales, 9570, letter in 5 weeks for SS report, 1 IRC. V/S. Raul Tarud Siwady, Gerente. (Barto) letter w/veri statement and sked., 73 days air for SS report and 2 IRCs. (Mayer) letter in 1½ months air for SS report, 2 IRCs. (Plum)

Voice of Chile, 15150, beach card w/full data, 35 days air from V/S. Gustavo Heitman S. Sent mint stamps. (Paschke)

CHINA P.R.: R. Peking, 7120, card, calendar, in 20 days air. (Wilson) no data card in 1 month. (Nonnast) 11965, card, sked., and pennant in 1 month for 2 IRCs. (Lovitz) 15010, card w/all data except time, 32 days. (Miller)

Peoples Liberation Army Radio, 3200/3400/3535, CC verie letter in 3 months air, all data! (Reeves) fantastic catch Scott!..Ed.

CLANDESTINE: R. Euzkadi, 12080, map card from France in 147 days for EE report, 1 IRC. (Gavaras)

Radio 69, 6275, fine photo card, letter and information sheet in 20 days for mint stamps. QSL posted from Chelmsford, England. Power 12 watts. (Campbell)

United Radio Europe, 6255, paper card and letter for German report and 2 IRCs. German pirate: U.R.E. c/o Sill, D-563 Remschied, Eschenstrasse 2, G.F.R. (Campbell)

COLOMBIA: Ecos del Combiema, 4785, letter and 2 postcards in 3 weeks from V/S. Fidelina Caycedo E., Secretaria Administrativa. (Dexter)

La Voz del Huila, 6150, letter, pennant, and booklet on San Agustin Archeological Park from V/S. Fernando Segura R. Dir. 1 month air. (Dexter) letter and pennant in 30 days for SS report, mint stamps. (Guarducci)

R. Bucaramanga, 4845, SS verie letter and pennant in 24 days for mint stamps. (Abraham) letter and pennant in 25 days for mint stamps. (Schwarz)

R. Nacional, 4955, QSL postcard w/all data for 1 IRC. (Schwarz)

R. Reloj, 4795, QSL in 3 weeks for SS report, 1 IRC. V/S. Mario Fric L. (Barto)

COSTA RICA: TIFC, Faro del Caribe, 6175, card w/full data and letter in 4 weeks air for mint stamps and EE report. (Lineback) 6175/9645, 2 cards in 2 months for EE report, no return postage. (Eichenhorn)

CUBA: R. Havana, 11760, card w/all data in 9 weeks. (Nonnast) 15140, full data card, sked. in 2 months for 1 IRC. (Lovitz) 11930, card in 8 months, no IRCs. (Atkins)

CZECHOSLOVAKIA: R. Prague, castle card w/all data in 21 weeks air. (Earhart)

DENMARK: R. Denmark, 15165, full data card w/wrong date, 1 IRC. (Wilson)

DOMINICAN REP.: R. Television Dominicana, 9505, verie letter in 4 weeks for SS report, mint stamps. (Lineback)

ECUADOR: La Voz de los Caras, 4795, full data QSL in 14 days for mint stamps. (Austin) R. Centinela del Sur, 5020, SS letter w/all data in 52 days air for SS report and mint stamps. V/S. Hernán Coronel V. (Duba)

HCJB, 9560, Oil in Ecuador card w/all data in 4½ weeks for 2 IRCs. (Lobdell)

EGYPT: R. Cairo, 9475, sent full data card and postcard in 2 months, no return postage. (Lovitz) black/white card, sked. in 5 weeks. (Meehan)

ESTONIAN S.S.R.: R. Moscow, 6055, full data card w/site in 33 days for R. Moscow report form. (Mayer)



FIJI ISLANDS: R. Fiji, 3230, full data outrigger card in 648 days seamail for 6 IRCs after many f/ups. My most prized QSL! (Hardester)

FINLAND: R. Finland, 15185, card in 2 weeks, no IRCs. (Atkins) winter in Finland card w/all details in 2 weeks. (Nonnast) 15185, card in 11 days. (Masterson)

FRANCE: ORTF, 15120, orange photo card w/all data except time. 5½ weeks sea, no return postage. (Earhart)

GABON: Radiodiff, Television Gabonaise, 4777, African map card w/all data in 5 weeks for FF report and 2 IRCs. (Lineback)

GERMANY-G.F.R.: R. Deutsche Welle, 6120, full data card in 10½ months air for 1 IRC. (Wilson) 6145, full data card in 1 year. (Hermann)

GREECE: HMBI, 9520, letter and card w/all details, 52 days air for tape report and 3 IRCs. (Cavaras) VOA, card in 8 days. (Strong)

GUATEMALA: RTV Guatemala, 6180, received letter from V/S. William Campbell, manager. 8 days air for SS report and 1 IRC. (Strong)

GUATEMALA: R. Cultural, 5955, verie letter in 2 weeks air for EE report and mint stamps. (Lineback) 3300, Quetzal card and rel. info in 2 months for EE report and mint stamps. (Cwikla)

GUINEA REP: Voice of the Revolution, 4910, form letter w/all details in 6 months for EE report. (Cwikla) 9650, form letter w/all data in 1 month after 3 f/ups, mint stamps sent. (Earhart)

GUYANA: GBS, Action Radio, 3290, form letter w/full data in 22 days for 2 IRCs and post card. V/S. Mrs. Desiree Mars for M.A. Rayman, Chief Eng. (Word) letter with all data in 10 days air for mint stamps. (Nonnast)

HAITI: R. 4VEH, 9770, card with all details in 2 weeks air, 3 IRCs. (Atkins)

HONDURAS: R. Progreso, 4920, form letter w/all data in 3 weeks for EE report and mint stamps. (Nonnast) form letter and pennant in 12 days air for EE report, mint stamps. (Yamron)

HUNGARY: R. Budapest, 9833, black and white card and letter w/all details in 11 weeks, no return postage. (Earhart)

INDONESIA: Java- RRI Surabaya, 3975, full data card w/photo of station in 3 months after f/up, total time 8 months. Sent Indonesia report and mint stamps. V/S. Sjam Abdoerrahman B. My 18th Indo verie! (Henderson)

Sumatra- RRI Pekanbaru, 3460, full data Indonesian letter w/ power noted as 5 Kw. 40 days air for NASWA Indo report and mint stamps. V/S. Amiroddin S. First North American QSL for 3460!! My 19th Indo. (Henderson) I'm jealous Dan!..Ed.

IRAN: Voice of Iran, 15084, received colorful card picturing TV studios, 7 months registered airmail after f/up. 3 IRCs. (Webb)

IRAQ: R. Bagdad, 9745, card w/all data, sked., and tourist info. (Guarducci)

ISRAEL: IBA, 7095, full data menorah card in 1½ months air for EE report, no return postage. (Eichenhorn) 7095, card with all details, sked, in 43 days air for 2 IRCs. (Lovitz)

15130, Menorah card w/all data, sked, and report forms. 6 weeks air for 2 IRCs. (Lobdell)

INTERNATIONAL WATERS: R. Nordsee Int., 6210, letter from Disc jockey plus no data card, 1 IRC. (Schwarz) sorry out of order..Ed.

ITALY: RAI, 9575, Painting card w/all data in 8 weeks air for 2 IRCs. (Lineback) 9575/7290/ 5990/ color card in 3 months, no return postage. (Guarducci)

IVORY COAST: R. Abidjan, 11920, verie letter in 19 days for EE report and 1 IRC. (Austin)

11920, form letter w/no data in 3 weeks for mint stamps. (Nonnast) card w/all data in 5½ weeks for 1 IRC. (Earhart)

JAPAN: R. Japan, 15270, traditional living room card in 19 days, report form and R. Japan News. no IIRC. (Lobdell) card in 12 days. (Meehan) card w/no time in 7½ weeks. (Earhart) card w/date and freq. in 10 days, no return postage. (Overcamp)


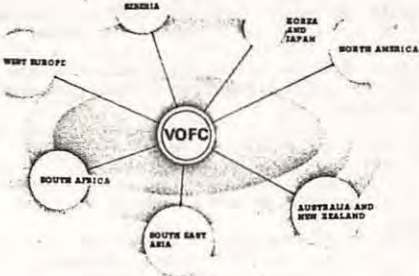
Far East Network, 6155, card in 15 days for 1 IRC and EE report. (Austin)

NSB, 9595, multi colored QSL card and note from Y. Kiko Ishizaka, 3 weeks. (Meehan)

JORDAN: Hashemite Brod. Svc. 7155, full data color card in 5 weeks, 2 IRCs. (Abraham)



LA VOZ DEL HUILA

	<h1>QSL</h1>	敬指請敬聽收謝 Thanks for Listening Comments are welcome
	The Voice Of Free China	
Frequency 890KHz 7130KHz 9575KHz 9685KHz 9765KHz 11825KHz 11860KHz 15125KHz 15345KHz 15370KHz 17720KHz 17780KHz 17890KHz		

MALAGASY REP: R. Nederland, 15110, map card w/SS text from French section!! 1 month air. (Plum) 15195, full data card in 15 days air. (Schwartz) 15220, 73 Dx Friendship card in 1 month air, no IRCs. (Eichenhorn)

MOROCCO: RTVM, foldercard w/no data in 2 months for mint stamps and EE report. (Nonnast)

MOZAMBIQUE: R. Clube de Mozambique, 6050, card w/all data in 4 weeks air for EE report and mint stamps. (Lineback) 11780, card w/no time in 2 months for 2 IRCs. (Atkins)

NETHERLANDS ANTILLES: R. Nederland, Bonaire, 11730, Royal Family card in 13 days air. (Nebron) card w/all data in 6 weeks, no return postage. (Lobdell)

NEW BRITIAN: R. West New Britian, 2340, verie letter in 1 month for mint stamps. V/S. M.P. Tonata says that I am only the 2nd person in North America to log them! My best QSL to date. (Abraham) nice catch!..Ed.

NIGER: ORTN, 5020, Map card w/full data in 40 days for NASWA FF report, mint stamps. (Estes)

NIGERIA: R. Nigeria, Benin City, 4932, full data card and sked. in 3 weeks for 1 IRC. (Yamron)

Enugu, 6025, full data card in 1 month for 1 IRC, (Yamron)

NBC, Sokoto, 6195, card w/all data in 2 weeks, IRC returned. (Nonnast)

R. TV Kaduna, 9570, gray/green card in 3 weeks for 1 IRC. (Abraham)

NORWAY: R. Norway, 11850/15345, sent two color postcards of fjord scenes w/all data in 12/13 days air, no return postage. V/S. Erling Thokle, SW Div. (Lobdell) 15345, Mountain Lake card in 7 days air. (Cwikla)

PAKISTAN: R. Pakistan, 11672, letter w/all data in 6 weeks for mint stamp. (Nonnast)

PAPUA/ NEW GUINEA: R. Chimbu, 2376, usual PNG folder w/full details in 12 days air for EE report and 3 IRCs. V/S. A. Daine. (WCNA reception). (Henderson)

R. Milne Bay, 3360, QSL in 6 weeks from V/S. Diba Samano, Mgr. (Barto)

R. Morobe, 3220, PNG folder card in 12 days air for mint stamps.

(Abraham) R. Northern District, 2468, full data folder card in 14 days airmail

for EE report and 3 IRCs. V/S. Nick Borby. WCNA reception. My 10th PNG transmitter.

(Henderson) V/LK3, 3925, map card w/full veri in 180 days sea for mint stamps. (Burler)

PERU: R. Atlantida, 4791V, verie letter in 11 weeks air for SS report and mint stamps.

Also sent nice pennant. V/S. Julio Reategui Burga, Gerente. (Yamron)

R. Quillabamba, 5025, letter and pennant in 1 month for SS report and mint stamps.

V/S. P. Joaquin Barriales, O.P. Director. (Cwikla) letter w/verie statement and pennant

in 23 days air for mint stamps. (Mayer) letter and pennant in 45 days air, mint stamps.

(Austin) letter and pennant in 4 weeks for mint stamps. (Barto) letter and pennant in 3

months, mint stamps. (Guarducci) Anyone know what 'Quillabamba' means?..Ed.

letter and pennant from above V/S. in 2 weeks for mint stamps. (Abraham)

PHILIPPINES: Voice of Philippines, 9580V, card w/no time in 3 months for 1 IRC. (Nonnast)

VOA, Tinang, 11805, antenna card in 1 week. (Abraham) 15290, card in 8 days

(Schwartz) antenna card in 35 days. (Guarducci)

PORTUGAL: R. Portugal, 6025, map card in 28 days. (Masterson)

IBRA, Voice of Hope, card w/all data and pennant, 1 month for 1 IRC. (Nonnast)

9670, photo card in 55 days air for 1 IRC. Promised to send sked. later. (Gavaraa) 9670,

full data card, sked and personal note from Swedish address in 25 days. Sent tape report w/2 IRCs. (Lobdell)

R.S.F.S.R.: R. Moscow via Elogoveschomsk, 7180, full data card in 26 days. (Austin)
R. Moscow, 7150, red/silver card w/all data in 3 weeks. (Eichenhorn) 7240, card and questionnaire in 60 days. (Masterson) blue circle card w/full data in 2 months. (Miller)
RWANDA: Deutsche Welle, Kigali, 11905, map card in 1 year! (Barto)
RYUKYU ISLAND: VOA, 7165, antenna card in 1 week. (Abraham)

SKYCHIEVES: FEBA, 11955, blue/orange map card w/all data in 7 months. (Abraham)
SICILY: RAI-Caltanissetta, 6060, beautiful card from Rome w/all data in 2 months air. (Duba)
SINGAPORE: R. Singapore, 7170, picture card in 3 weeks for 3 IRCs. (Hagen)
SOLOMAN ISLANDS: SIBS, 3995, white card w/outline map of Islands, full data in 14 days air for 3 IRCs. (Hagen)
SOUTH AFRICA: RSA, 9695, Tree card in 1 month air for no return postage. (Eichenhorn)
4890, Industries card in 11 days air. (Miller) 9605, card w/all data in 3 weeks for mint stamps. (Nonnast) 11900, Tree card and booklets in 16 days, no IRCs. (Lovitz)
Springbok Radio, 4790, card w/all data in 2 weeks. (Nonnast) 4790, Industries card and pennant in 28 days air. (Hermann) full data card in 3 weeks air. (Eichenhorn)
SWEDEN: R. Sweden, 15240, card with full details, sked., and pennant in 9 days air, no return postage. (Lovitz)
SWITZERLAND: Swiss Brod. Corp. 11870, photo card w/all details in 2 months sea mail, no return postage. (Eichenhorn)

BANGKOK METEOROLOGICAL RADIO

Telecommunications Division
Meteorological Department
612 Sukumvit Road
Bangkok 11, Thailand

14 February 1974

Dear Sir,

It is a great honour receiving your letter dated 2 Feb 74. According to the programmes you heard and inserted therewith, they were our programmes of which broadcast by the Bangkok Meteorological Radio. You were correctly tune in our station.

The Bangkok Meteorological Radio has been established since October 1973, however it has been being on tests. Official opening will be taken soon after the tests are satisfied. Main purpose of the establishment of this station is to inform or broadcast for ships within areas responsibility of Meteorological Department relating to WMO regulation. Rotatable Log Parabolic, 100 feet height antenna beamed to southeast or south direction is equipped.

I would like to take this opportunity to inform you that our station has now been being on tests as mentioned above, so it would be difficult for you to have clear signals, however we will try our best in order to improve things, particularly in technical improvement. Your reception reports is of the very interesting one we would consider. We would very appreciate if you would keep on listening to this station whenever you have a spare time and let us know, if possible, how it is getting on.

It is nice knowing you, and we would be grateful if you could kindly extend some informations concerning the Bangkok Met. Radio to your friends who are interested in listening to distant radio as a hobby.

Thank you so much for your kind co-operation, hope to hear from you again. Your advice is of our consideration.

With our best regards.

Yours faithfully,

C. Kliewtong

(Chote Kliewtong)

for Chief, Telecommunications Division

TAIWAN: Voice Of Free China, 7130, card w/all details in 3 weeks air for 3 IRCs. (Hagen)
THAILAND: Bangkok Meteorological Radio, 7863, letter w/verie statement and color post card of Bangkok in 25 days air for EE report and 3 IRCs. (Henderson) letter and postcard in 2 1/2 weeks from V/S. Chote Kliewtong. (Dexter) letter in 3 weeks for tape report and 3 IRCs. (Hagen) verie letter from above V/S. in 28 days air for 1 IRC. (Mayer)
TURKEY: 11880/9605, Voice of Turkey, Harem cards w/all details in 9 weeks, no return postage. (Earhart) 9515, card w/date and freq. in 1 month sea, no IRCs. (Eichenhorn)
TURKS & CAICOS IS: Turks Island Radio, 4788, excellent letter in 8 days for 2 IRCs. Welcomes reports. (Cwikla) letter w/full data in 12 days air for 3 IRCs. (Schwartz)

UNITED STATES: KGEI, 9615, pink globe card and sked. in 3 months. (Miller)

Voice Of America, Bethany, 17710, card in 9 days. (Austin) letter of comments from George Jacobs, air in 2 weeks. (Fino)

WYFR. 15130, Mike card w/all data in 4 weeks air for 8¢ stamp. (Paschke) 5985, card in 3 weeks for airmail stamp. (Atkins) 6075, full data mike card w/sked. in 1 month air for 1 IRC. (Hermann) 17760, full data mike card in 5 weeks, no IRCs. (Lobdell) UPPER VOLTA: RTV Voltaique, 4815, card in 16 days after registered f/up, total 277 days. My 173rd SWBC country! (Campbell) 4815, full data full color map card in 6 months for FF report and 2 IRCs. (Cwikla) African map card in 6 month for NASWA FF report form and 1 IRC. (Estes)

UZBEK S.S.R.: R. Taskent, 9600, Chimes Tower card and sked. in 2 months, no return postage. (Lovitz) R. Moscow via-Taskent, 7160, card w/site in 6 weeks. (Barto)



VATICAN: R.Vatican, Cross card with all data and sked. in 13 days, no IRCs. (Overcamp)

VENEZUELA: Ecos del Torbes, 4980, letter w/verie statement and pennant in 51 days for 1 IRC. (Schwarz)

La Voz De La Fe, 4930, letter and card in 3 weeks for SS report and 1 IRC. V/S. Fernando Acosta, Dir. (Barto)

R. Barquisimeto, 4990, globe card w/all data in 9 weeks for mint stamps. (Schwarz) R. Carora, letter w/verie statement in 5 weeks air. Sent tape report w/mint stamps..V/S. Carlos Jose Gonzalez. (Lobdell)

R. Juventud, 4900, Dancing Kids card in 5 weeks for mint stamps. (Lineback) R. Maracaibo, 4860, letter in 6 weeks for SS report, 1 IRC. V/S. Miss Kathy González. (Barto) letter w/all data in 7 weeks for mint stamps. (Schwarz) letter from above V/S. in 172 days for mint stamps and NASWA SS report. (King)

R. Rumbos, card w/details of station in 105 days for mint stamps. (King)

R. Universo, Network card w/no time, 5 weeks for mint stamps. (Nonnast) R. Yaracuy, 4940, Network card in 105 days for SS report and 1 IRC. (King) network card w/no time, 1 month for mint stamps. (Nonnast)

Many thanks to all who took time out to report this month. Please when reporting print your last name at the end of each item. Illustrations still wanted for use in this column (must be clear photocopy or original, if original is sent please enclosed return postage, thanks) Will be moving my QTH to Boston next fall. Hi ya BAD GUYS! Keep on streakin.....to the radio! hi.

BEST OF DX AND 73's,

Larry Hamron

ABRAHAM, Larry, Bridgeport, MI/HQ180A 8
 AGNER, Mike, Waldwick, NJ/SX110
 ATKINS, Kevin, Shelby, AL/Star Roamer/DX150B
 AUSTIN, Marty, Wethersfield, CT
 BARTO, Sam, Morris, CT/BC794
 BOWLSBY, Jeff, Vancouver, BC/SP600
 BROWN, Mark, Minster, OH/DX150B
 BURLEN, Doug, York, PA/SX190
 CALKIN, Gregg, Islamabad, Pakistan/SW4A
 CAMPBELL, John, Switzerland
 COLLIER, Mike, Williamsville, NY/R4B
 CREAMER, John, Denver, CO/SW4A
 CRESS, Hadley, Harrisonburg, VA/SX190
 CWIKLA, Tom, Wethersfield, CT/DX150A
 DAVIS, Bill, Laguna Niguel, CA/Homebrew
 DAVIS, Jim, Travis AFB, CA/Grundig 700
 DAY, Edward, Auburn, CA/SX190
 DEXTER, Gerry, Lake Geneva, WI/HQ180/R4B
 DJBA, Mark, Burlington, VT/R4B/SX190
 EARHART, Kenneth, Allentown, PA/DX150A/SX190
 RICHENHORN, Sandy, Troy, MI/SX190/SPR4
 ESTES, Steve, Newport News, VA/SX190
 FIELD, Marlin, Benton Harbor, MI/SX100
 FINO, Henry, Rochester, NY/1936 RCA
 GAVARAS, Tom, Wayzata, MN/HQ180
 GUARDUCCI, Ciro, Cassiar, BC/SX190
 HARDESTER, Mike, Lenoore NAS, CA/XCR-30
 HAUSER, Glenn, Stillwater, OK/HQ160
 HAGEN, Jim, Portsmouth, VT/R390A
 HENDERSON, Dan, Laurel, MD/SX190/HQ180A
 HERMANN, Frank, Montreal, Que., S-125
 HILL, Bob, San Francisco, CA/R390
 HOHNSTEIN, William, Lincoln, NB/SB300
 JONES, Jack R., Jackson, MS/DX150A
 KEATING, Rick, Allendale, NJ/Midland
 KING, Donald, Havertown, PA/DX150A
 KOZLOMKOWSKI, R.J., Amsterdam, NY/DX150/DX120
 LEGGE, Roger, McLean, VA/
 LINEBACK, Jerry, St. Joseph, IL/SPR4/XCR30
 LOBDELL, Chris, Reading, Mass/SW4A
 LOHE, Ernst, Hamburg, Germany/R4B
 LOVITZ, Barry, Boston, Mass/
 MASTERSON, Lowell, Tell City, IN/
 MAYER, Alan, Park Forest, IL/SB310/DX150/NC173
 McARDLE, Scott, Waverly, NE/DX160
 MEEHAN, Jim, Berkley, CA/
 MILLER, Al, Youngstown, OH/HRO500
 MILLER, Gus, Newark, CA/DX150A
 MORLAN, Gilbert, San Diego, CA/DX160
 NEBRON, Larry, Daly City, CA/SX190
 NONNAST, Joey, Texas
 OVERCAMP, Thomas, Bladensburg, MD/NC98
 PADULA, Bob, Australia/CR100
 PASCHKE, Bill, Beloit, WI/SX190
 PAPPAS, Andy, Chicago, IL
 FERDUE, Neal, Mallington, TN/SB313/HA600A/SW4A
 PLUM, William, Irvington, NJ/WR600
 PITTS, Stephen, Salem, OR/SW4A
 REEVES, Scott, Laruel, MD/SX190
 ROBINSON, Daniel, Levittown, PA/HQ180C/SPR4
 ROSS, Michael, Ronkonkoma, NY/SX190
 SCHNABEL, George, Rochester, NY/SW4
 SCHWARTZ, Richard, Dover, DE/SX190/S108
 SCHWARZ, Karl, Fort Wayne, IN/DX150B
 SHAW, Ed, Norfolk, VA/SP600/X190
 SMITH, Arthur, Wilsonville, AL/BC342N
 SHOCKLEY, Mike, Waukeo, Iowa/DX150A
 STRICKLAND, Wayne, Dallas, TX/DX150
 STRONG, Harry, Iowa
 TUREBEL, Wallace C., Seattle, WA/HQ180
 TRUSCHERER, John, Neenah, WI/HQ100A
 VAN ZORGE, Jim, Stillwater, NY/DX150A
 WALLACE, Steve, Lewiston, PA/DX150A
 WEBB, Corky, Dallas, TX/SPR4/R4B
 WILSON, Solomon, Philadelphia, PA/SX190

WOOTEN, Charles, Moreoco, R390/Zenith
 WORD, Jerry, Atlanta, GA/DX150A
 YAMRON, Larry, Pittsburgh, PA/HQ180/SX190
 ZILMER, Robert, Milwaukee, WI/SPR4

And I left myself out,
 FERGUSON, Dan, S.Charleston, WV/SB310/
 HQ145A/X190

Our thanks to all who took the time to
 share their loggings and QSLs received.
 Why don't YOU report in next time!!

Those who are close enough to drive in
 for FRENDEX "put together time", and
 would care to help get it put together
 and in the mail, are invited to drop a
 note to Dan Ferguson at the HQ address,
 to check on the next scheduled such
 event. Help in this all important task
 would be greatly appreciated.

THE WORLD OF SHORTWAVE - A DX/SWL meet.

We again remind all that the place to be
 July 19-21 is in Columbus, with other
 DXers & SWLs

Contact Randy V. Minnehan
 975 Chestershire Road
 Columbus Ohio 43204

for further details. It promises to be
 a truly great meeting, and we expect,
 while there, to lay the groundwork for
 further such meetings.

A number of members are bringing their
 families. Many will probably travel
 in car pools; further details on this
 can also be obtained from Randy Minnehan.

Don't miss the equipment displays,
 discussions, and the good time to be had
 by all.

I'll see you the 19th of July!

Dan Ferguson
PARAGUAY A license has been granted for
 a new SW stn in Asunción, power in excess
 of 100kw, tx to Europe, in EE/GG/FF and
 Dutch....From April 1, Paraguay reverted
 to GMT-4 hours...Chile also GMT-4,
 Argentina still on GMT-2, Uruguay
 apparently on GMT-2½. (Tony Jones)
BOLLIVIA Weak stn on 6210, usually after
 2300, some AMs around 1100. Recent SCDX
 rpt says CP-81, R.Luis de Fuentes on
 6217, ex 6140, so may be this stn.
 (Tony Jones)

Thanks again to Tony Jones for another
 report from Paraguay. Dan F.

Harold Sellers has compiled a list of
 stations that send pennants, published
 thru CIDX. Cost is four(4) 10¢ US or
 Canadian stamps for listeners in US and
 Canada. Elsewhere 5IRCS air, 3 IRCs sea.
 Write Harold Sellers, 122 Giroux, #20,
 North Bay, Ontario, P1B 7T7, Canada.

73 from

NASWA

BOX 8452
So. Charleston, W. Va. 25303

NASWA dues are US\$10 per year. Airmail overseas is: Central America and Caribbean \$4; South America & Europe, \$5; Africa, Asia & Pacific \$6, in addition to the \$10 dues. The MIDMONTH FLASHSHEET is US\$2 in NA, US\$4 elsewhere (airmailed overseas).

Notice of address change should indicate date membership expires (number of month beside your name in the address) as well as whether the change is for FRENDX only or for both FRENDX and the midmonth Flashsheet.



FIRST CLASS MAIL