

# F R E N D X

The SHORT WAVE BROADCAST Journal - Since 1962

NORTH AMERICAN SHORTWAVE ASSOCIATION

Vol. XII No. 1

January 1973



THE LOUDENBOOMER REPORT

A popular feature of many DX club bulletins is the "Pages From the Past" type series, wherein news and loggings from five or ten years back are re-printed as nostalgic reminders of days long gone.

Now, you're liable to find this a bit surprising, but my club, the IWWCDXA, has been around a bit longer than you might think. So, here is our own historic trip to DX days gone by.

THE MONITOR'S SCROLL - - - - London - - - - Number 16. Being the issue IV.6.1711 A complete and authoritative compilation of the various listening experiences from our monitors being located in the Kingdom and in the foreign countries of the world. All times are accurate to as close as fifteen minutes! (Due to the one-hand clocks used then-CL)

BARBARIA Oran Radio. Now commencing their monthly transmissions on the seventh each, at 7:15pm on their newest frequency of 7603.

LIVONIA Audible recently with a man reading a description of a gypsy parade in downtown Riga. Poorly received on 3910.

NATOLIA Radio Antiochia has not been heard recently. It is believed that the Asia Minor conflicts may have caused the most serious damages to these facilities.

NOVA FRANCIA. NFBC at MontReal is reported to be in the midst of a re-organization and re-building following an attack by natives most vicious.

TUCUMAN Radio Tucuman at San Miguel de Tucuman. Our reporter believes this is the station he heard signing off with drumbeats at 10pm on 4115.

NOVA GROENLANDIA. A MS reporter, sailing under the flag of Hispania, has made a call at this port on the south shores and discovered no truths in reports of a station here.

TERRA NOVA Reports from the most authoritative sources state that NFBC will establish a modern relay base here, once re-organization has been completed to the satisfaction of all.

HISPANIA RNH broadcasting station at Toledo monitored by one of our reporters on 9500 at 7pm with the most recent news of Hispania explorers.

HISPANIA NOVA Indian dialects may be heard by listening to this rare station in the New World, having its operations on 5620. Studios most primitive are located on the outer edges of Veracruz.

GALLIA Frequently heard here in the Kingdom, but reportedly more difficult in developing colonies and other foreign places. Try the GBC each Monday, Wednesday and Saturday from 6 to 9pm on 3220.

MAROCHO. RM at Goza has been infrequently monitored by our South Europe reporter on 7000 commencing at 2pm daily with the call to prayer.

TERRA FIRMA Radio Nuevo in San Martha recently having commenced operations, has been monitored by one of our reporters to 4am close down on 4800.

NUBIA REGION Music common to the various native peoples of the Dark Continent can be listened to over this station at Nubia. Listen on 8350 daily at 1pm.

INSULA SALOMONIS We have received a word that there will shortly be a station in operation on Guadacanal, under the commission of the ISBS.

ISLANDIA A low powered station does operate on this island, however, your MS editor continues to seek information concerning the important hours and frequencies.

I. ZOCOTRA This station most exotic has been forced to discontinue its activities being that the station did not have enough local listeners. It is your scribe's opinion that the station should have taken its foreign audience into consideration, rather than just their four local subscribers.

Well, as you can see, there were a lot of interesting possibilities back in 1711. Another part of the bulletin, devoted to QSLs, was interesting in the length of time they took. Up to 5 years! Which makes me wonder about the monitor reports. With such slow mail delivery I wonder how anybody was able to log anything in those days!



# HEADQUARTERS CALLING

NASWA, P.O.Box 8452, S.Charleston, W.Va. 25303 USA

HELPING HAND For Sale: New Collins 75S-3B receiver with all ham band xtals and xtals for 60-13 meters. First offer of \$515+ takes all, but you pay shipping. Write Bill Whitacre, 2609 Devonshire, Lansing, Michigan 48910. Bill would also like to hear from people in Michigan who would be interested in forming a small NASWA branch with monthly or bi-monthly meetings or who are just interested in DXing.

FOR SALE Heathkit GR-54 receiver in perfect operating condition; complete with original papers and factory carton; freqs = LW, MW, and complete SW bands thru 30 mHz. Logged 119 countries on this set, in spite of limited time; not used in over one year, due to new R4B. Good step-up from portables or good second set. Make me an offer, I need the bread! Write Hank Michalenka, address below.

FOR SALE R4B accessory crystals for frequencies 8.5-9.0 (only used once by a little young DXer to verify Libya), 18.0-18.5, 18.5-19.0, 19.0-19.5 mHz. I know you UTE/harmonics people are out there somewhere. Drake gets \$5 each for these. Will sacrifice, as I'm running the R4B on 84 volts to save money on the electric bill! Write Hank Michalenka, 14 Brook St., Central Falls, RI 02863

FOR SALE DX150A receiver in excellent condition. Write Rich Marchak, 2201 9th Ave., Beaver Falls, PA 15010.

FOR SALE Heath SB310 receiver, with SSB filter, 13 meter conversion & SB600 speaker. All in good condition. \$230 ppd. Write Paul Mayo, 2409 Ocean Parkway, Brooklyn, NY 11235.

MICHIGAN DXERS (and elsewhere) Larry Abraham would like to meet other DXers in his area, and correspond with others, including foreign DXers. Write Larry Abraham, 3839 Sherman, Bridgeport, Mich 48722

NORTH CAROLINA area DXers!! Chester E. Dement, Rt.3, Box 331C, Charlotte, NC 28210, would like to contact Charlotte area DXers.

FOR SALE Hammarlund HQ180 with clock, in perfect condition. Write Warren Nordgren, 2129 Linden, Waukegan, Ill., 60085.

TAPESPONDERS Steve Estes would like to do some taping. Cassettes, Write, or tape, Steve Estes, 147 Linbrook Dr., Newport News, VA 23602.

FOR SALE Complete Charlie Loudenboomer series, only \$2.50 ppd in NA. Write...Huh? How'd he get that in here? Oh, well, write NASWA HDQ if you want it...CL!!Wheredhego?

It seems we somehow forgot to mention that the special discount price for NASWA members on the 1973 WRTH was arranged through Gilfer Associates, P.O. Box 239, Park Ridge, NJ 07656. We didn't really intend to omit it, and we certainly are most appreciative of the opportunity to save some money for members. Gilfer sells many items of interest to the DXer, and is the one such dealer we can recommend to members, as we've had dealings with them for several years now.

We continue to find newspaper reports of what "Radio Hanoi" said rather amusing, since there is no such station, S/b "Voice of Vietnam". But it makes one wonder where they get the quotes from "Radio Hanoi". Tell your editor about NASWA!!

# MAIL CALL

LETTERS FROM MEMBERS WITH PROBLEMS

Deadline: 20th of month

Edward C. Shaw  
621 Burleigh Avenue  
Norfolk, Va. 23505

\*\*\*\*\*

Dear Ed: Much as I would like to listen to short wave while driving on long trips in my car, I have yet to see any car radios for sale with short wave facilities. Can you suggest what I can do?

Answer: Perhaps so - it depends on your finances. Entirely satisfactory outfits are for sale by Norde-Mende in the neighborhood of about \$200. These can be installed inside your automobile using your existing car antenna. But, I expect most people would be more interested in a converter unit for their car radios for around \$25.00. Such units are available for short wave, as well as for the various UHF, Marine, and CB bands. Write Western Electronics, Kearney, Nebraska 68847. Say you saw it in FRENEX.

\*\*\*\*\*

Dear Uncle Ed: I've recently noted in print somewhere about a DX club supporting programs to introduce and aid handicapped persons in the SWL hobby. Can you tell me more?

Answer: Certainly. This benevolent concept was devised by officials of one of NASWA's sister clubs, SPEEDX. The Handicapped Aid Program (HAP) basically is to aid handicapped persons with limited incomes to pursue SWling as a satisfying leisure. I understand that equipment has been made available without cost to handicapped persons for their use until such time as the person is no longer interested in the hobby, and are then expected to relinquish the equipment. There is merit in the concept, but some feel there are minor strings attached which should be removed. Details are available from Mr. Gene Moser, 6805 Woodland Court, Coloma, Michigan 49038.

\*\*\*\*\*

Dear Ed: I certainly enjoyed the article about the Bonanza DX Safari. What kind of planning does such a trip entail? Did you have electricity?

Dear Ed: Several other fellas and I want to plan a DX-pedition like the one you and Mr. Jamison and Mr. Ferguson had. Can you provide me some details of what to do?

Answer: These small group get-togethers can be every bit as fun as the annual conventions. I'll be happy to give anyone writing me greater details for such a trip, but for now, let me advise those interested the most important considerations are: 1) the location, 2) antenna facilities, and 3) heat and electricity. (We had electricity on the premises) Unless an RF-pollution-free location is found, there is no reason for your efforts except fellowship. Unless you can also arrange to erect satisfactory antennas, you might be no better off than meeting at somebody's home. Naturally, heat and power for lights and equipment are essentials. Clothing, bedding, food and water, and hygienic considerations are all portable and easily carried with you.

\*\*\*\*\*

Dear Ed: Why is there such a mystery surrounding Charlie Loudenboomer? How long has he been with the club?

Answer: Every so-often this type of question comes in, and heretofore our Executive Editor (the late William P. Eddings) answered each writer with a short and pleasant note. The question has been asked often enough to merit some sort of reply for the general membership's information. Obviously, Charlie Loudenboom was not Bill Eddings. And, despite some accusations from close quarters, it is not me. Nor is it our Executive Editor, Dan Ferguson. In all honesty, the identity of Charlie was never vouchsafed me. Various persons have attempted to compare writing from different typewriters and other sleuth-like tactics - all to no avail. (Continued on the next page)

Rumor upon rumor has built a mysterious myth in the seven (I think) or so years that Charlie has been publishing with us. It has been said that even William P. Eddings himself did not know who Charlie Loudenboom was, and that the monthly stencils simply arrived without return address and postmarked from different locations. So be it. One might give thought to the possibility CL could be many persons. He may even be everyone! This is easier to accept when one realizes how the spirit of even Santa Claus is fast within us all, and we willingly propagate Santa's spirit and intent as if he were truly alive - and isn't he? So, what matter if one or two, or even three persons perhaps, should choose to relate the comedy situations all of us have experienced or dreamed from time to time? NASWA is fortunate to have had Charlie's company. No, I honestly do not know who Charlie is, and I don't want to know. As far as the mystery is concerned, if his true identity were known his usefulness to crimefighting would be ended. (Hi)

\*\*\*\*\*

Dear Ed: When constructing various antennas, the greatest inconvenience I suffer is the lack of a blow torch with soldering tip - necessary for making my outdoors soldered connections. Can you come up with an alternative suggestion?

Answer: There are several alternatives as I see it. You can engineer your antenna on paper first, and thereby determine where your soldered connections should be made before actually taking the whole thing outdoors to hoist up. Another alternative is to use an electric soldering gun at the end of a heavy duty extension cord. Or, you can do what I've found satisfactory, and it's very light and portable. I keep a throw-away butane lighter in my pocket as well as a small can of solder flux paste and a roll of solder ribbon. Solder ribbon with resin flux already combined is made for use with a match or lighter since the compound will melt at lower temperatures. I use an additional smear of solder flux paste on the joint just to ensure the solder will flow smoothly when heat is applied. The whole pocketful runs less than \$3.00 and will last a long time.

\*\*\*\*\*

Dear Ed: Can you tell me what NASWA considers is the rarest DX in the world?

Answer: No, this is a matter better decided individually. Your location in the U.S., or anywhere in the world, will largely determine what is rare DX for you. But, the consensus of opinion as derived from the writings of a good number of the more experienced DXers says these countries are pretty much desirable above most: Tristan da Cunha, Falkland Islands, Cook Islands, Portuguese Timor, Mauritius, Maldives, New Hebrides, and Azad Kashmir among others. Choice stations desired from otherwise easily-logable countries are: PeiHai Fisheries stations in the P.R. China; Radio Shkodra in Albania, the Polish Pathfinder's station in Poland, and any number of Latins and Indonesian regionals. These are somewhat personal opinions, but likely to be considered choice by anyone's standards.

\*\*\*\*\*

Dear Ed: What is the difference between the Ameco PCL-P Preamplifier and Gilfer's A-20 Preselector?

Answer: A preamplifier is just exactly that. Attached externally to a receiver's antenna input, the preamplifier provides very broadband amplification to the RF stage of a receiver. It amplifies noise as well as signal, but may give a better signal to noise ratio. Most PCL-P users have experienced an average 10 db gain. The Gilfer A-20 is very selective and must be precisely tuned at each relocation of the receiver dial. Not only does it amplify, it gives a better signal to noise ratio, and virtually eliminates images and repeat points. Users have uniformly reported great satisfaction with the A-20.

\*\*\*\*\*

Ed  
And a big 73 for the New Year! Ed Shaw

## Clandestine



## Bulletin

REPORT ON CLANDESTINE, REVOLUTIONARY, PIRATE & ESPIONAGE RADIO & TV ACTIVITY

Larry Magne, P.O. Box 2133, Middle-City Station, Philadelphia PA 19103

For as long as most of us can remember, the subject of clandestine radio activity has been covered by radio publications with a degree of casualness that would never be accepted with other types of radio activity. Partly this is due to the paucity of "hard" information on the subject; add to this several other complicating factors and the result is often incomplete, inaccurate or both.

"Clandestine Bulletin" is our effort to improve on this state of affairs. It is devoted exclusively to clandestine and neo-clandestine radio and TV activity, irrespective of technical parameters, such as wavelength or transmission mode, although the nature of our readership prompts us to strongly favor voice transmissions (unscrambled). The sources of information are necessarily varied, but chief among these is that information you can provide -- your comments on program contents that may provide clues to transmitter location or the controlling organization; new frequencies you've logged recently; new IDs or ISS heard as of late; verifications or schedules received; transmitter sites or headquarters visited; photographs; tape recordings (any type); and so on. In short, we can function at full capacity only with your information!

"Clandestine Bulletin" welcomes information on so-called "bootleg" stations, i.e. those pirates operating in North America on the MW/BCB band, often just above 1600 kHz. Naturally, we will not lead curious parties to the doorstep or car door of any bootlegger, which suggests verification chasers will still be left to their traditional resources. On the other hand, CB cannot accept the notion that there should be one standard for U.S. pirates and another for those outside the U.S., so the policies that evolve with respect to discreet information will be uniformly applied.

If you wish to have a WRTH-type reference work on the subject of clandestines, you may purchase the 1973 edition of "How to Listen to the World" from Gilfer Associates or your local book vendor. Certainly you will need this if you are seriously interested in the field.

One closing note. In my opinion, the chief failing for past endeavors concerning clandestine operations is the lack of listening to program content. That, plus off-the-air monitoring, combine to provide both schedule and political information that allows one to at least guess with fair accuracy the type of station ("black" or "white"), possible controlling group, and even transmitter site(s). Thus, persons with multilingual facility are most instrumental in helping unravel the mysteries surrounding a particular clandestine operation, as few are in English. So if languages are your bag, here's one place you can very usefully apply your talents.

Thanks kindly to the many of you who sent Christmas and New Year's greeting cards. Time precludes personal responses, so I hope you will accept here my best wishes for 73 in 1973.

STATION OF THE MONTHVOICE OF TRUTH

Voice of Truth -- "Radiofonikos Stathmos i Foni tis Alithias" -- is easily heard in Europe, the Americas and likely elsewhere. Heard since March 20, 1958, it has been reliably reported as having operated from Rumania and, more recently, East Germany and Bulgaria. About a year ago, the reliable BBC Monitoring Service, which is privy to intelligence information, placed this in East Germany as part of RBI's operation, but subsequent analysis of transmitter behavior strongly suggested that this was not via RBI. The BBC stuck by its East German conclusion, while others of us returned to the Bulgarian thesis. On November 13, 1971, the BBC MS made a most interesting observation: during a gale that put the LW PTP and 881 kHz RGDR MW operations out of commission, they noted that "Voice of Truth" was simultaneously put out of operation, suggesting that it, too, is part of the transmitter field at the Koenigswusterhaus-

en site. Also interesting is that BBC MS mentions nothing about the Turkish-language "Our Radio" having gone off the air at that time, which makes it a little less certain that Voice of Truth and Our Radio still share facilities.

Voice of Truth is operated by the Communist-oriented United Democratic Left (EDA), which is illegal under the current Greek military regime. As with nearly all clandestine radio operations, we know little about the degree of listener interest, but it is likely not widely listened to among the general populace. It is often reported as jammed, but I personally have been unable to confirm this. Possibly one of you can listen to this on your next trip to Greece, where jamming activity ought to be voluble, and see what you find.

Voice of Truth signs on with a pretty 18-note flute IS, followed by several bars of Greek flute music, then the slogan, "Kato i diktatoriali Zito i dimokratia! Edho Radiofonikos Stathmos i Foni tis Alithias." In English, "Down with the dictatorship! Long live the democracy! This is Radio Station the Voice of Truth." This is usually followed by the news, then music and commentary, although all-music programs have sometimes been noted. It ID's often in mid program, usually as either "Accoute ti Foni tis Alithias" ("You are listening to the Voice of Truth") or "Edho Radiofonikos Stathmos i Foni tis Alithias" ("This is Radio Station the Voice of Truth"). It then signs off with several bars of Greek music.

Program content is unsurprising, having the expected pro-Moscow Communist orientation. However, it is fairly soothing in presentation, both due to the verbiage and the pleasant music seldom used by the "legitimate" Communist SWBC operations. Of course, students of Greek current affairs should find it useful listening.

Voice of Truth is best heard in North America between 0430 and 0955, and when Moscow vacates 9775 it should be audible from 1000-1035 as well. Additionally, it is audible, but not with much clarity, during North American afternoons. CHU tends to make listening difficult on 7335, but in many parts of the continent Voice of Truth covers CHU adequately for nearly 100% readability. The full schedule currently is:

0430-0505	7335	1000-1035	9776	1830-1900	9776
0510-0545	9776	1120-1200	7335	1930-2000	7335
0700-0725	7335	1205-1245	9776	2030-2115	7335
0730-0755	9776	1600-1630	7335		
0920-0955	7335	1710-1730	9776		

Finally, no verifications are known to exist from Voice of Truth. If you want to be first, you might try the Greek Communist Party or EDA in Budapest, Hungary, or any other Communist capital where they might be represented. Of course, be absolutely certain you have heard "Voice of Truth" before you attempt this!

#### NEWSLETTER

What is listed in HTL-73 as "Radio Omega" is actually part of the Radio Free Russia operation, as Radio Omega ceased to transmit via RFR August 1, 1965, although Omega has transmitted via Radio Monte-Carlo for the past 5 years (Bernard Chenal, Mulhouse, France)...Voice of the National Liberation Front of Chad transmitted via Libya on 1250, 11795 and 8630 from 1930-2000 between September 1971 and April 1972, when Libya reestablished diplomatic relations with Chad (Chenal)...The Korean unidentified in HTL-73 is Voice of the Revolutionary Party for Reunification and still operates from North Korea despite the recent agreement terminating propaganda broadcasts in North and South Korea; the schedule is simply 1200-1400 in Korean on 1137 MW, 4563 (BBC Monitoring Service, Bob Bundy, Truk, Caroline Islands)...What is listed in HTL-73 as Voice of the East actually translates correctly to "Voice of Unification" and is still active, too (Isao Ugusa, Kobe, Japan)...What is listed as Radio of the Chinese People's Communist Party more correctly translates to "Radio Red Flag", which is not to be confused with the MW Radio Red Flag, also in Chinese, on 995 kHz (Ugusa)...Voice of Fighting Angola is listed via Lubumbashi (100 kw) on 11865, plus is noted on 4750 from 1800-2000 under the title Free Voice of Angola; further info appreciated (Sam Barto, Morris CT, SCDX)...The Peace Ship, which is supposed to transmit the "Voice of Peace" from International Waters near the Palestine, seems to be held up again due to lack of funds (Gregg Galkin, Ottawa, Ontario)...The Chinese Embassy in London was recently asked by the British Psychological Society to not use its espionage transmitter during the society's meetings, owing to RF interference in the PA system from the code transmissions (UPI)...RFE/RL again faces a possible Congressional funds cutoff and may be asked to leave West Germany (Newsweek)...By tying in Soviet dissident activity to NTS/Radio Free Russia, the KGB was able to "break" Pyotr A. Yakir, a well-known dissenter, into informing on numerous other dissidents (NY Times). END

**FRONT DE LIBERATION  
NATIONALE DU TCHAD  
( F R O L I N A T )**

18, Rue des Oliviers  
Imm. Floriana Bat. D  
EL-BIAR — ALGER  
Téléphone : 78-34-06

Nof 62/B.A./72

Date 16 Octobre 1972



« النصر أو الشهادة »  
"VAINCRE OU TEMOIGNER"

جبهة التحرير الوطني التشادي  
مروانينا

18 : شارع الزيتون  
عمارة فلوريانا حرق/د  
بالبيار - الجزائر  
الهاتف : ٧٨ - ٣٤ - ٠٦

رقم /

التاريخ /

Monsieur,

Nous avons le plaisir de vous accuser reception de votre lettre du 06/10/72, lettre à laquelle nous nous faisons le plaisir de répondre.

Pour ce qui est des émissions du FROLINAT, elles n'ont plus lieu depuis avril dernier pour la simple raison que la République Arabe de LIBYE ayant renoué ses relations avec le TCHAD, se serait une mauvaise chose que de continuer à émettre depuis Radio-TRIPOLI, car en effet, c'était de là que nous emmettions chaque soir aux horaires et longueur d'ondes que vous avez indiqué.

A l'époque où nous emmettions, pour ce qui est des "dialectes", aucun "dialecte" parlé au TCHAD n'était écarté; nous les avions pratiquement tous utilisés sous formes d'interview de nos militants. Néanmoins, les émissions principales se faisaient en Arabe et en Français.

Quant au buts de notre mouvement, nous espérons que les communiqués ci-joints vous permettront de vous faire une idée suffisamment claire de nos objectifs.

Nous vous prions, Monsieur, d'agréer l'expression de notre haute gratitude et de nos salutations révolutionnaires.

Pour le F R O L I N A T,  
le permanent chargé de l'information

à Mr. Bernard CHENAL  
B.P. 3106  
68062 -MULHOUSE-CEDEX  
( FRANCE ).



# HARMONIC HUNTING

with  
HAUSER

EDITOR:

Glenn Hauser

Box 62

Von Ormy TX 78073

SPRINKLED throughout the shortwave firmament are "ghost" stations--twinkling in and out of audibility. More and more DXers are discovering how much fun it is to hunt for harmonics; this new column demonstrates NASWA's concern for fostering new trends in DXing. In coming months we'll cover in detail how--and why--to DX harmonics. But to get us under way, some pertinent questions...

Haven't you gone off the deep end with this harmonic business?

Not at all, though some may feel otherwise. Some DXers specialize in clandestines; others in Africans, missionary outlets, etc. Harmonic hunting is but another specialty--and a very fascinating one, once you're into it.

How come you report so many more harmonics than anybody else?

Well, I do spend most of my SW DXing time these days checking for harmonics. DXing from south Texas, I may have a slight edge on LA harmonics, especially Mexicans. But an occasional report from further north shows that harmonics can penetrate far inland. After 15 years of DXing, I'm looking for new stations to hear. As an all-band DXer, I'm accustomed to sweeping the "off-band" ranges, and have come to prefer them over the excessively congested megawatt-ridden ISWEC bands! Harmonics are a bonus--unintentionally radiated, often at flea-powers. Ordinary SWEC stations pale by comparison. Hearing many different stations is my goal; country totals matter little. Anyhow, we hope this column will help to spark your interest!

Sorry, but country hunting is my bag. Can I gain anything from harmonic DXing?

Yes, it's quite possible. Numerous MW-only Caribbean countries could make an harmonic appearance any time. It would pay to check 2480 and 3080 kHz for the Bahamas, and 2460 and 2880 for Bermuda. (The latter is currently a stronghold of R. Reloj de Tuluá, Colombia.) Jamaica is a bit less likely since the highest MW frequency now used is 770 kHz; this would require a statistically less probable third harmonic to rise above smothering QRM within the MW band. (Careful! 2310 bears Ondas Orientales, El Salvador, here.) You can easily figure out other West Indian possibilities.

What's your technique for harmonic DXing on the lower frequencies?

Frequent tuning and consequent familiarity with the entire 1600-3200 kHz range. The best times for regular checks are just before 0100 GMT, since Mexican daytimers leave the air around that hour; just before 0300 for the widest selection of "fulltime" stations, some of which go off around that hour; and just before 0500, when nighttime conditions are in full swing, weaker AN stations appear, and many are about to sign off. Another window exists between 0930 and sunrise for the early riser! I'll present some more specific tips next month.

Please write with any questions and comments you may have on harmonic DXing! However, please include your harmonic DX with your overall SWEC LR reports. To get a jump on next month, though, here are a few of my tips too late for this month's LR deadline!!

- 2660 NICARAGUA R. 15 de Septiembre new here tnx move from 1210 to 1330 per WRB. 500w Estelí stn hrd 12/16 0144 ID as "Canal 1,330" à la previously hrd Cuenca, Ecuador stn--but 0259 s/off gave definite Nicaraguan ID. Poor reception.
- 2798½ MEXICO XELH, Acaponeta, Nay, first noted 12/17 this season! 2307 ID, MST TC, request mx. Clear, fair exc. when 2-way QRM hits. Nom. 1400 kHz fund. is low.
- 3130 COLOMBIA 12/17-18 vy weak SS, LA mx, 2320 onward; 0400 s/off w/brief unreadable ID, NA and off. NRG's Schatz says HJZT, R. Sensación, Manizales, is on 1565
- 3180 MEXICO XEVOZ, México DF, finally definite R. Voz ID, 12/17 2301; usual het from 3177, XEPT, Misantla Ver. The fundamentals are 1590 and 1588½.
- 6159 GUATEMALA R. Nuevo Mundo is a highly unusual (outside Cuba!) 7th harmonic! In the clear daytime 12/17, but with 6160 het; 1827-1859 w/marimba pgn, ID; always weaker than TGWA-6180, but improving after 1945. Fundamental 880 kHz.

...until the next, 73 de Glenn

# Shortwave Center



EDITOR  
Alvin V. Sizer  
22 Country Way,  
North Haven, Ct. 06473  
Deadline 15th of Month

## From Sonora With A QSL

By G.A. Calkin

It was a cool morning and as I awoke at 5 a.m. to the roar of the alarm, I hated myself for choosing the 7 a.m. flight to Hermosillo, capital of the northern Mexican state of Sonora and populated by some 176,000 people, most of whom were undoubtedly sleeping later than I. As Canadian Vice-Consul, however, my work frequently called for visits to remote areas of the Mexican Republic and this time I had had only 18 hours notice. In any event, I hoped to capitalize on the visit to obtain a QSL from my most wanted Mexican SWBCer, XEBR/11820 kHz, for a 3-month old report and a 1-month old follow-up, both unanswered. XEBR is not well or often heard in Mexico City, but having picked it up one Saturday morning for approximately 45 minutes, I was anxious to add it to my QSL collection. Thus inspired, I arose and barely made it to the airport on time.

Four hours later the Mexicana 727 was circling over Hermosillo's large, orange-grove covered plain, having just completed a milk-run through central and Pacific Mexico. The airport, a small modern building several miles from the city, was soon left behind as the taxi dashed off towards Hermosillo, on the wrong side of the road. Thirty five minutes and two near misses later, we pulled into a small hotel, surrounded on all sides by orange trees, my home for the next 2 days.

It was late that same afternoon before I managed to take a few minutes to seek out XEBR, located on a side entrance to the large Hotel San Alberto. Upon entering, I was informed by an attractive young lady that the Gerente had just left but should return soon. I didn't have to wait long. A youngish man soon entered, spoke briefly to his secretary and then cordially greeted me. For the next two hours Sr. Luis Höeffler Obregon and I swapped stories on many aspects of broadcasting, DXing and shortwave. I learned that it was his father who had founded the station in 1935. Now Luis was directing the operation of it, an AM outlet, XEHO, and was interested in using the shortwave outlet to its fullest potential. English identifications were being planned and continuous relays of MW programming over 11820 kHz had already been re-instituted after several years of sporadic operation or complete inactivity. The director also mentioned that the former and somewhat ponderous name, "El Heraldo de Sonora", had been dropped to give the station a new image and to avoid possible confusion with a Hermosillo newspaper of the same name. The official name of both MW and SW stations is Radiodifusoras de Sonora, S.de R.L., but identifications are usually either "Radio BH" after the MW outlet or "La Pantera del Aire", after a large pink panther which adorns the station's lobby--the panther being a gift from a local listener.

After two hours, I decided to bring up the subject of QSLs. The director turned a little red and explained that the primary

EDITOR'S NOTE: Gregg Calkin, QSL editor for FRENEX, has found a sure-fire method for landing that hard-to-get verie. Try it, you'll like it.



Star marks location of Hermosillo, the capital of the state of Sonora

(Continued on Next Page)

## FROM SONORA WITH A QSL.... (Continued)

reason for the lack of response to my report was: the station had no QSL cards, apart from one very old yellow card which he was somewhat ashamed to send. QSL cards were also in the planning stage, he added, finances permitting. When I explained that the type of QSL was not as important as the fact that the station would reply to a correct report, either by card or letter, Luis kindly offered the last of their former cards (featured in June QSL Report) and promised to reply to all future reports by letter, either in English or Spanish as he is most capable in either language.

As I started to leave, Luis turned down the volume on his HQ-180 and added: "Stop by tomorrow and we'll go see the transmitter site." And we did--an impressive two-tower array, some 10 km outside of Hermosillo, and afterwards, followed it by lunch at a delightful Argentine restaurant and a quick visit to the campus of the University of Sonora to see Hermosillo's other shortwave voice, Radio Universidad de Sonora/XEUDS, which operates from a huge tower in center campus on 6115 kHz.

(Photos on this page were taken by the author)



XEBR STUDIOS

XGUDS  
TRANSMITTERSXEBR  
TOWERS

Later that evening, as I listened to the whine of Aeromexico's DC-9 gaining altitude over Sonora en route back to the Federal District, I tried to mentally prepare my consular report for the visit, but my mind kept returning to the new QSL in my Attaché which, from a DXing point of view, made it all worthwhile.

And Sr. Hoeffler has been as good as his word. Since my visit earlier this year, many QSLs have been received, and now, with daily operation on 11820 kHz from 1200 to 0500 GMT, why not try a report yourself, either in English or Spanish, to Apto. Postal 68, Hermosillo, Sonora Mexico. You will be assured of a warm reply from a friend of DXers.

## DX Thrills

Receiving VTVN, Saigon, on 11950 at 1600 on a DX-150A is fairly difficult and after pinching myself to make sure it wasn't a dream, I called my two fellow teen-age DXers I regularly share tips with. "Probably the VOA," they said. "We'll believe it when we see the QSL." Figuring it would take 5 years and 10 follow-ups, IRCs, postcards, etc., I started out with just an English report and no IRCs.

But 28 days later I hit the jackpot, a full verie from VTVN! My two doubting DX friends are still in a state of shock and every time I mention VTVN I am answered with a prompt, "Shut Up!"

--- Frank Orcutt, 15.

(Contributions wanted to this feature.)

\*\*\*

## UPCOMING!

The inside story on the FBIS!

How to build an antenna tuner under \$5.

DX Tips and DX Thrills.

And much more, IF YOU CONTRIBUTE.

But please don't send us clippings from the AP, UPI and NY Times. We see them all and so do most of you. We need the new and original to keep FRENDEX tops.



INTERVAL

SIGNALS:

THEIR HISTORY

By MICHAEL WISEBERG

First of all, interval signals are used to identify a station to listeners quickly other than by an announcement and to fill in odd moments between programs when for one reason or another an announcement would be inappropriate. They are also used on transmitters as identification before joining the programs.

The BBC uses various interval signals for the different services with the most famous of them being the V for Victory interval signal which introduced each day's broadcasting to Europe. During the wartime summer of 1941 this IS was first used. The listeners were cheered by the four-beat tympani drumbeat utilized: boom--boom--BOOM. In Morse code it signaled V for Victory and was employed to back up the victory campaign of the Allies. Also, to annoy the German occupation forces and to boost resistance morale. This IS was used to Sept. 30, 1972 but has now been replaced by a new electronic bleep which will keep the Morse signal for the letter V.

The clock strikes of Big Ben are another IS used by the BBC. Up until 1970 the World Service used Bow Bells for mainstream programs and it now employs the tune "Oranges and Lemons". The African Service utilizes a musical version of BBC.

The BBC has various IS's because formerly the European Service, English programs and the African Service were all separate entities. Now they are part of the World Service, sent out as alternative programs at certain times of the day. They still retain their identity for the areas for which they are specifically intended.

\*\*\*

(The above information was received from the BBC in a letter in reply to one sent by the author asking about the history of the interval signals. Here's a good way to get material for Shortwave Center that can be shared with your fellow DXers. How about it?)

\*\*\*\*\*

THE OLDEST

The oldest of the current DX programs broadcast on shortwave is Australia's DX-ers Calling. It was established in 1947. The following year, on Feb. 8, 1948, Sweden Calling DXers, began.

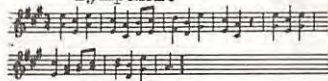
DX PROGRAMS

+++    +++    +++    +++    +++    +++    +++    +++

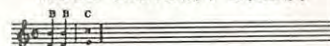
WE'RE CONDUCTING A SURVEY TO FIND OUT WHAT DXERS CONSIDER THE TEN TOUGHEST COUNTRIES ON THE NASWA COUNTRY LIST TO LOG IN NORTH AMERICA. JUST WRITE YOUR COUNTRIES IN ORDER, 1 to 10, ON THE BACK OF A POSTCARD AND SEND TO SWC EDITOR. WHEN THE RESULTS ARE ALL IN WE'LL COMPILE THEM AND PUBLISH THEM IN FRENDX. WRITE NOW!



V for Victory, Played on Tympani.



World Service: Bells.



3 Notes, World Service for Africa, Other Services  
\*\*\*

**DX Tips**

Your logbook offers you good tips from the past as to what might be logged currently from your particular QTH.

Hence, a look at my logbook tells me that my best chance to log a South Pacific station in the 90 meter band in Connecticut will be from Sept. 21 to Nov. 1 and March 1 to 31.

There are always exceptions to every rule but playing the percentages pays off.

\*\*\*

Contributions wanted for DX tips. Keep 'em short. Share your experience with others.

COUNTRIES, HOW TO COUNT'EM...AND WHY

By DON JENSEN  
(Concluding part of a  
two-part article)

The NASWA radio country list, unlike most other lists, is not based on any fixed set of criteria for reasons outlined in the preceding article. It is admittedly arbitrary, with but one aim in mind: to provide NASWA's SWBC listeners with a maximum number of target areas--consistent with common sense--to tune and verify. It contains only radio countries which have or have had shortwave broadcast operations at some time since the end of World War II (actually September 1, 1945.)

Purists may object to the pragmatic basis of this list, but in the end, a radio country list has only this justification; to provide a common standard for DXers in our club and an incentive for them to keep tuning for new stations.

Consideration is given the experienced listener who can count in his log those stations heard long ago but which ceased to exist, politically, some time ago. And even though a country no longer politically exists, if there still is a station in that territory, the newer listener can count that area as a country. After all SWBC reception has relatively little to do with political boundaries, governments or independence dates! The NASWA list contains over 220 countries. It is safe to say, no one has ever heard, much less verified, all of them. Most still broadcast on SWBC, giving the newcomer and oldtimer alike a nearly equal chance.

(Please turn to the next page)

EDITOR'S NOTE: When DXpert Don Jensen was only 5 he asked his mother what number came after 49. She told him and asked, "Why do you want to know?" "I've just logged my 50th country," he proudly announced. Since that day he has learned to count well over 200.

DAFFYDEFINITIONS

(Blame Al Reynolds and Dan Jamison)

RESISTOR

What to do when the wife wants a mink coat.

KILOCYCLES

A tricycle with 1,000 wheels.

CUBICAL QUAD

Four Cubans sitting in a square shooting the bull.

SWBC

A term only to be used in regard to the .01 watt station in Vancouver, South Western British Columbia

EAVESDROPPING

Falling off one's roof while putting up antenna.

HOW TO COUNT STATIONSIN INDONESIA

NASWA counts the Indonesian Republic as 5 separate countries. The transmitter sites in WRTH

are counted as shown below but WRTH list is an incomplete one.

\*\*\*\*\*

JAVA-- Djakarta, Bandung, Tjirebon, Purwokerto, Jogjakarta, Surakarta, Semarang, Madiun, Surabaya, Djember, Denpasar, Sumenep, Singaradja, Mataram, Kupang, Bogor.

SUMATRA-- Kotaradja, Medan, Sibolga, Pakanbaru, Djambi, Padang, Bukittinggi, Palembang, Pinang.

BORNEO-- Pontianak, Bandjarmasin, Samarinda, Palangkaraya.

CELEBES-MOLUCCAS-- Makassar, Manado, Gorontalo, Ambon, Ternate, Kendari.

WEST IRIAN-- Djajapura, Sorong, Fak Fak, Merauke, Manokwari, Biak, Wamena.

+ COUNTRY COUNTERS usually send in their scores to the SCOREBOARD +  
 + which is a feature appearing in FRENDX every three months. If +  
 + you haven't "joined" yet, keep your eye on the QSL Section. +  
 + Next one will be in March. +

Number	Name	SCOREBOARD				PRIZED QSL
		HIC	VIC	HIS	VIS	
1.	John Ananias	236	236	939	939	Nibi Nibi
2.	Baron Munchausen	235½	235½	938½	938½	Nibi
+	172. A. Lincoln	35	15	63	27	VOA, Greenville +

### COUNTRY COUNTING--- (Continued from preceding page)

Additions and changes to the list are made from time to time, when appropriate, by the NASWA Country List committee, Gerry Dexter and Jerry Berg, Dan Ferguson and Gregg Calkin and chaired by the author. Countries may be added, parenthetical name changes made, but there will be no deletions from the list as the result of cessation of station operations or geopolitical factors. Specific questions about the list and its use or suggestions for additional countries may be directed to the chairman or any member.

In the list, initial country references are to the common name of the territory as of 1945. In parentheses, following the initial reference, are the subsequent names of the "countries" since that time, with the last reference the present common name. As examples, the SWBC station at Aden counts as Aden (South Arabian Protectorate) (Rep. of South Yemen) and that at Kinshasa (or if you were listening in the old days, Leopoldville) counts as Belgian Congo (Rep. of the Congo) (Zaire).

The original edition of the NASWA list included an explanatory page on use of the list. This has been omitted from more recent updatings of the list, but I'll include some of these examples here, on the chance that they may help you make use of the NASWA list.

- 1) Station at Lusaka, Zambia, logged Jan. 1967. Count: Northern Rhodesia (Zambia).
- 2) Stations at Hargeisa and Mogadiscio, Somalia, logged Jan. 1972. Count as British Somaliland (Somalia) and Italian Somaliland (Somalia).
- 3) Stations at Karachi in January 1966 and January 1972; at Dacca in January 1966 and January 1972. Count the first two receptions (only once) as India (West Pakistan). Pakistan was part of India in 1945, you may recall. Count the Dacca receptions (only once) as India (East Pakistan) (Bangladesh).
- 4) Stations at Fort Moresby, Wewak, Rabaul, logged Jan. 1972. Count as, respectively, Papua Territory, New Guinea, Territory of and New Britain.
- 5) Station at Singapore logged January 1955, January 1960 and January 1972. Count (only once) as Singapore (Malaysia) (Singapore).
- 6) Station at Dakar logged January 1954 and January 1972. Count (only once) as French West Africa (Senegal).
- 7) Station at Goa logged January 1960. Count as Goa (India).

Yes, it may seem a bit confusing at first, particularly if you are not too sharp on the political changes that have occurred during the past 27 years. But the benefits of such a list outweigh the initial disadvantages and you'll soon understand. Again, questions may be directed to committee members, or to the chairman, Don Jensen, 5204 70th St., Kenosha, Wisconsin, 53140.

And if you don't have a copy of the current NASWA Country List, drop a self-addressed stamped envelope, with a request for a list, to NASWA headquarters.

## DX Bookkeeping

By AL SIZER



DXing is a lot of fun but it can quickly become a confusing and frustrating hobby if you don't do your paperwork. Tedious as it may seem, you must keep detailed records or you'll soon lose track of what you have or haven't logged. Equally important, you should have an idea of what you might be able to log in the future.

This article tells how one DXer takes care of his bookkeeping chores. We make no claim that this is the perfect solution and if you have better methods, let us know. But it works for us.

The problem of keeping records of what we have heard involves various procedures, all essential.

### \*\*\* THE WORK NOTEBOOK \*\*\*

To begin with, there is our work notebook. It should be fairly small for ease of handling; beyond that the dimensions are up to you. We use a 8 x 4 inch lined reporter's notebook, hinged at the top. This is always beside us as we DX and in it, with pencil, we list anything we hear that is worth noting--by date, time, frequency and SINPO rating. It is here, also, that we enter the program notes that will be used in compiling reception reports to be sent to stations whose QSLs we seek. When these notebooks are filled we usually toss them in a drawer and keep them about a year in case we want to refer back.

### \*\*\* THE PERMANENT LOGBOOK \*\*\*

The next step, which can be put aside until you have time, is to transcribe from the work notebook to a permanent logbook the data we wish to preserve. In this case it is a large looseleaf holder containing 11 x 8½ inch sheets obtained from Gilfer for \$1.98 for a package of 75 with a discount on re-orders. If you don't like these make your own.

What constitutes a permanent logging is up to you. And although we say "permanent", these entries, too, are made in pencil to permit later corrections. You will certainly want to enter every new station heard and every new frequency for an old station. The rest depends on you. Personally, we limit additional entries to loggings made at unusual times or seasons or with some unusual circumstance attending. We shy away from logging totally everything we hear to keep the volume of our records reasonable. After almost five years of DXing we are up to Page 57 on the Gilfer sheets.

These sheets have lines marked for frequency, date, time, bandspread, call letters, station name and country, power, SINPO rating, QRMing stations, QSL dates and comments. If you have more than one receiver you can use the bandspread space for a symbol indicating which rx was being operated. At the top of the page there is room for your QTH, names of your receivers and aeriels used. We also enter the year in large numerals.

### \*\*\* INDEX CARD FILE \*\*\*

Since looking up a past logging in the logbook may involve a search through many pages, it is also essential that a system be maintained that lists all loggings numerically by frequency. The common 5 by 3 inch lined index file card is a natural for this. Although specially printed cards may be available elsewhere, you will end up needing hundreds of these and it will be much cheaper to buy the usual index card.

On the next page you will find a reproduction of one of these cards from our files. Much of it needs little further expansion except to say that the words in parentheses are not actually on the card but are used to explain entries.

(Continued on Next Page)

## DX BOOKKEEPING

(Cont.)

Where a letter for rx is used you may substitute a numerical band spread reading. Since all lines of the card are not used you may add other data, or use the back of the card. On the rear of this one we added that Bocono was heard only because R. Cristal was using another frequency and a follow-up was necessary to get the QSL. At last check we had over 1,500 of these cards, ranging numerically from 2360, R. Maya de Barillas, Guatemala, to 26095 kHz, the VOA at Dixon, California. Be sure to make entries, it goes without saying, in pencil. You'll want to make changes later on.

Perhaps you'll want to consider something longer than the usual metal index card filing boxes. When we had filled 4 of these, we got smart and installed longitudinal partitions in the desk our rx sits on. The drawer partitions have index tab cards at each 1,000 kilohertz mark and now while DXing it is easy to reach down, pull out a desk drawer and see whether the station we are hearing is new and just what has been logged before on or near the frequency. If all our records had to go except one, it is the index card system we would keep. It's invaluable.

For a long time these two logging systems seemed sufficient until the day came we could not remember whether a "new" Venezuelan station was actually new or we had forgotten we had logged it. There was no easy way of telling from our logging file since the frequency might have changed. It was then we saw the need for a third file.

## \*\*\* THE BIG INDEX CARDS \*\*\*

This, simply, merely involves the use of larger index cards (6 x 4 inch) and a metal filing box. You could list all countries but we just list alphabetically the countries where we have heard more than three stations. The name of the country goes at the top of each card and then we list and number the stations, 1 to a line, using only name, call letters, QTH and frequency. If we verify the outlet it has an asterisk. Thus it is easy to see, for instance, that we have logged 50 Venezuelans and what they are. If we want further info, the frequency will lead us to the frequency file card system.

One other step is needed. We must keep a running total of stations and countries heard. This is done by using the mimeographed country list NASWA provides with blanks for dates heard and QSLed. In front of each country we pencil in the number of stations heard and thus it is easy to add them up and get a grand total for the SCOREBOARD. To make this simple, we keep one index card in pencil where we are constantly changing the VIC, HIC, HIS, VIS totals.

That's it. Sounds like a lot paperwork? No time to DX? Actually it's just the opposite--because we have done our paperwork, we don't waste any time when we actually get down to DXing. In a future issue we'll discuss keeping a book of potential "targets".

SEE NEXT PAGE FOR ANOTHER MEMBER'S IDEA

5010(KHZ)YVRW R. BOCONO		H
BOCONO		(RX USED)
VENEZUELA		
1KW-SS		
L.A.MX COMMERCIALS		(LANG.-SPANISH)
4/1/71	0130 GMT	34233
(DATE LOGGED)	(TIME)	(SINPO RATING)
(LOGBOOK REFERENCE, PAGE, LINE) 38-15		
4/2/71 (DATES REPORTED ← LOGGED →)		1/18/72



# WMR

A NEW POPS PIRATE

NOT SO NEW AT ALL

(Illustration from QSL)



Hopefully, some NASWA DXers have logged the Netherlands pirate station "World Music Radio" on the basis of a special New Year's Eve program that was to begin at 2200 GMT and continue 13 hours on 6250 kHz with a boosted power of 100 watts. An independent station broadcasting pop music from the Netherlands, WMR turns out to be not as new as it might seem.

The station first started broadcasting in 1963 under the name of Radio Vrij-Omroep on a wavelength of 186 meters. The station then moved to 7050 kHz and changed its name to Radio Carolien. Soon after, it operated on 6025 and later 6040 under the name of Radio Euroweekend. Euroweekend closed down in April 1968 and WMR began broadcasts 4 months later on the same frequency. Further moves were made to 6050, 6067, 6215, 6225 then 6250 and now back to 6225.

The transmitter is "home made" with a crystal oscillator, buffer amplifier with an EF80 tube, pre-amplifier QQ- E O-3-20 and an 807 power amplifier. The RF power is 40 watts and the music power 60 watts. The antenna is a windom.

WMR has two studios, announcing and DJ, and uses two record decks, three tape recorders (Telefunken M95, Revox D36 and Revox F36) and a cassette recorder which has been changed into a jingle machine. (?) There are two microphones, a Sennheiser MD421 and a Beyer M260. The programs are mostly presented live. (Presume this means records, live announcements, no tape).

At the time of this writing WMR had received reception reports from 15 European countries and, disregarding New Year's Eve, and a couple of probables from the U.S.A. All correct reception reports are verified by QSL cards. Reports may be in English, French or Dutch and two IRCs should be enclosed. Record requests and information for the DX program are also solicited. Send all letters to Steve R. Wainwright, 79 Rookery Lane, Rainford, St. Helens, Lancs., England. Programming is in English and Dutch. WMR is self financed and no commercial advertising is used.

The present broadcast schedule is Sunday only from 0900 to 1300 which is prohibitive for U.S. DXers. However, the station occasionally has tests of about an hour at 2200. Friday is a likely day. Plans are being made for test transmissions on other frequencies, such as in the 19 meter band. Further information may be obtained from the English address above. (Be sure to share it with FRENDEX).

\*\*\*\*\*

#### EXPLANATION

Replying to a DXer's request that transmitter sites be announced, Tamara Shulga of Radio Moscow African Service said: "We cannot take action on it, unfortunately. In some cases we use several transmitters

at once in different cities for the same program. Therefore it would hardly be advisable to announce transmitter sites." -Sam Barto



**HELP WANTED:** Your editor is no artist; see at left. If you can do black and white sketches to illustrate FRENDEX, please write!

\*\*\*\*\*

#### BEISBOL

Baseball is in full swing in L. A. These names of Venezuelan teams and cities may help you in QSL reports: Aragua Tigers, Lara Cardinals, Caracas Lions, Zulia Indians, La Guaira Sharks and Magallenes Navigators.

--Ralph Perry

\*\*\*\*\*

## PHENOMENON OF THE DARKNESS PATTERN EXPLAINED - Part IX (Final)

By Edward Shaw

This is the ninth and final part in the series of configurations for determining sunrise and sunset times for any part of the globe. Each month up until now has only covered a portion of the year - approximately 40 days. This has enabled us to publish an entire year well in advance of the dates of effectiveness. For our final examples this month, let us consider the possibilities for a signal to propagate from Godthab, Greenland to a DXer in Bismarck, North Dakota. As always, the rules are:

1. Low frequency transmissions will only propagate between two points in darkness.
- \* 2. Exact GMT for any longitude on the globe may be easily figured by adding four minutes of time for each degree West of  $0^{\circ}$  Greenwich, or subtracting that four minutes for East of  $0^{\circ}$  Greenwich. This is called the Sidereal Time Difference.
3. The accompanying chart tells when sunrise and sunset will occur (within a few minutes) in local time for most latitudes. Nearly exact estimates may be interpolated for latitudes between those shown.

RECEPTION OF TRANSMISSIONS BELOW 7,000 KHz

Dates	Reception unlikely after . . .				LAT °	Reception unlikely before . . .			
	SUNRISE (Local Time)*					SUNSET (Local Time)*			
	2/28	3/09	3/18	3/30		2/28	3/09	3/18	3/30
0702	0630	0609	0532		60	1724	1747	1809	1838
0658	0634	0608	0535		58	1728	1749	1809	1836
0655	0632	0608	0537		56	1732	1751	1809	1834
0652	0630	0608	0538		54	1735	1752	1809	1832
0649	0629	0608	0540		52	1737	1754	1809	1830
0646	0627	0608	0542		50	1740	1755	1810	1828
0640	0624	0608	0545		45	1746	1758	1810	1825
0635	0622	0607	0548		40	1750	1800	1810	1822
0631	0619	0607	0550		35	1755	1802	1810	1820
0627	0617	0607	0552		30	1758	1805	1810	1817
0621	0614	0606	0556		20	1805	1808	1811	1814
0615	0610	0606	0559		10	1810	1811	1811	1811
0609	0607	0605	0601	Equator	0	1816	1814	1811	1808
0603	0604	0604	0604		10	1822	1817	1812	1805
0557	0600	0603	0606		20	1828	1820	1813	1802
0550	0556	0602	0609		30	1835	1824	1814	1759
0546	0554	0601	0611		35	1839	1827	1814	1758
0541	0551	0600	0613		40	1844	1830	1815	1756
0535	0548	0559	0615		45	1849	1833	1816	1754
0529	0544	0558	0617		50	1856	1837	1817	1751

\* Add Sidereal Time Difference for West of Greenwich, and Subtract for East of Greenwich

EXAMPLE CONFIGURATIONS for 18 March 1973 between: Bismarck, ND at  $101^{\circ}\text{W}$  and  $47^{\circ}\text{N}$  and Godthab, Greenland at  $52^{\circ}\text{W}$   $64^{\circ}\text{N}$

- a. Bismarck:  $101^{\circ}\text{W} \times 4 \text{ mins} = 6 \text{ hrs } 44 \text{ mins Sidereal Time Difference added to:}$   
 $47^{\circ}\text{N}$  local sunrise (0608) = 1252 GMT  
 $47^{\circ}\text{N}$  local sunset (1810) = 0054 GMT
- b. Godthab:  $52^{\circ}\text{W} \times 4 \text{ mins} = 3 \text{ hrs } 28 \text{ mins Sidereal Time Difference added to:}$   
 $64^{\circ}\text{N}$  local sunrise (0609) = 0937 GMT  
 $64^{\circ}\text{N}$  local sunset (1809) = 2137 GMT

At this time of year, Godthab has sunrise a full half-hour before their transmitters sign-on, so it will be useless to tune at that time. However, the various schedules advise us that Greenland's third transmission is on until at least 0200 GMT daily, and 0300 GMT Sunday morning. At this time, Godthab has already been in darkness for nearly five hours. Since sunset occurs in Bismarck at just before 0100 GMT, we may hope to catch a fade-in of the last 30 to 60 minutes before Greenland signs-off. Check your WRTH - there are several frequencies.

Ed  
73, Edward Shaw

DESERT SONG

+++  
THE SAGA OF  
SPANISH SAHARA

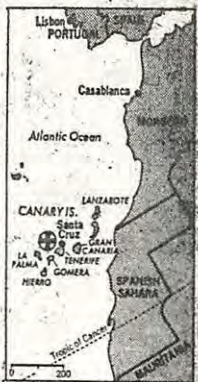
+++  
By Ed Shaw...

Now you see it, now you don't. No sooner has a SWBC outlet appeared than it shortly disappears from the bands...and often before a QSL is realized. Radio Sahara is apparently now silent on SWBC but I, and a few other fortunate DXers, succeeded in getting a QSL. On my part, though, not without considerable expense as you soon will read.

Spanish Sahara is a smallish colony under Spanish rule on the northwestern coast of Africa. The well-heard Radio Nacional de Espana relay in the Canary Islands (also Spanish) is just a stone's throw out into the Atlantic from Sahara's capital city of El Aaiun (the "fountain"). The northern area of Sahara is served by Aaiun's MW outlet on 656 kHz and the southern area is served by a 998 kHz outlet from the town of Villa Cisneros (literally, "Swan Quarter").

The first word of a SWBC outlet broke in Europe late April, 1971 and was shared by a small group of U.S. DXers. The 7230 outlet had been confirmed as Radio Sahara by the European DXers by tuning the known parallel MW station on 656 kHz. This was really hot news! There was an immediate wild flurry of activity as a few DXers with decent equipment logged Spanish Sahara for several weeks running. It wasn't easy as the sign on time, 0800, is rather late for African reception. I first heard them on May 29, 1971. The frequency was a steady 7230 kHz and the opening interval signal was the same night after night. Radio Nacional Espana's regular guitar (or harp) interval signal was used from about 0755 GMT until 0759 and was followed by a drum roll and trumpet fanfare intro. If the QRM by adjacent ham operators wasn't too bad, one could occasionally hear the Arabic announcer come on at 0800 with his high pitched and drawn-out identification: "Hounahhhhhh Aaiuuuuunnnn". I was fortunate, indeed, to get a worthwhile recording of about five minutes duration, including the sign-on.

My first reception report went out in duplicate--Spanish and English, including a small reel of tape with a dub from the original, 3 IRCs and an American flag decal. Then I sat back to wait. And, wait I did...while at least one or two other DXers were getting replies. It was summer now and reception of Spanish Sahara was nil. The next time I heard them was in October, 1971, and since I knew 5 months had elapsed I figured a follow-up report was in order. Gerry Dexter was one of the few fortunate recipients of a QSL and he advised the name and address of a specific Spanish Sahara personage. My second report included a specifically-worded report prepared at my direction (for a \$5 fee) by a Spanish linguist, another dub of tape, another 3 IRCs and this time a couple of 45 rpm pop records lifted from my son's collection--all sent registered Air Mail. So far, this venture was costing me about \$10. When now answer was received within another 6 weeks, I wrote directly to RNE in Madrid to cry on their shoulder and.... (CONTINUED NEXT PAGE)



## RADIO SAHARA

El Aaiun, 24 de Noviembre de 1972

(Unglamorous QSL Letterhead of Radio Sahara)

Sandwiched between Morocco, Mauritania and Algeria (to the east) and possessing valuable bauxite ores, Spanish Sahara may cease to exist soon as a political entity. These 3 countries want to have the Spaniards leave and split up Sahara among themselves. Spain, as might be expected, seeks to stay.

\*\*\*\*\*

## THE SAGA OF SPANISH SAHARA...By Ed Shaw (Continued)

explain the dire circumstances. I sent along another report and my photograph at the receiver with a request to forward the letter. This time I sent a 100 peseta note obtained from a local bank (about \$1.40). A reply from Senor E. Pascal Souto in late November flatly denied knowledge that Radio Sahara had a shortwave service and returned my report and 100 pesetas along with a current RNE schedule. Now I was really perturbed and frustrated. I fired off another letter with tape dub to Senor Pascual Souto with the request that the RNE program directors give a listen. Surprisingly, when that reply came I learned he had done so. Though they now admitted the existence of the station they suggested that nothing could be done to prompt a QSL policy from Radio Sahara since relay stations of RNE were quite autonomous; whereupon my report and enclosures were returned again. I was chagrined! But there wasn't anything more I could do--except, one more report direct to Radio Sahara's Federico Campos Alvarez with tape, and now some postcards, a few choice collector's stamps and lastly...one green el bucko.

The turn of 1972 came and went. Reports of Spanish Sahara were prevalent up until the normal summer cycle (earlier sunrise time in Sahara) broke the darkness pattern. In July other DXers received similar replies to mine from Senor Pascual Souto.

No more news about Spanish Sahara until European DXers reported hearing it again in September 1972 on 4627 kHz. Several U.S. DXers then logged it around 2100-2300. Alas, in October word was received from Senor Fernando L. Patino of Radio Villa Cisneros in Sahara that the 4627 outlet was really a PTP utility relay of certain Radio Sahara and Radio Villa Cisneros programming. The shortwave broadcast service of Radio Sahara was apparently inactive. It seemed there was no hope for ever getting satisfaction for the now nearly \$20 invested in my QSL venture.

Then, one of those miracles happened. Just as I had given up and resolved my life would have to go on without a Sahara verie--it finally came! The postman knocked on my door about noon. A kind stroke of fate had arranged for me to be home that day. I signed the receipt and retired to an armchair in nervous excitement.

I sat looking at the envelope without opening it. "It came", I said to myself. "It finally came." Thoughts of twenty dollars and months of frustrations were millions of years behind me now. It was worth it all. The exotic, colorful stamps glistened up at me in the light as I turned the package over and over in my hands. Carefully, I slit one end and shook out the contents. Several postcards of Aaiun, some Sahara stamps and a 45 rpm album of local Arab music were enclosed with the letter from Federico Campos Alvarez. Yes it was a QSL! In the letter Senor Alvarez was profusely apologetic for the tardiness of his reply, giving as excuses no time or personnel during the reorganization of the radio station's administration.

Oddly enough, though the QSL was difficult to obtain, it is not necessarily one of my favorites from the standpoint of looks. Now there is a possibility Spanish Sahara may be gone for good, perhaps I will be able to cherish this QSL as a souvenir of days gone by. This entire experience just goes to show you how fond some persons can be of this hobby. I'm just thankful that QSLs don't normally cost twenty dollars.

**LAS FUERZAS ARMADAS!...LAS FUERZAS ARMADAS!...(From AVS)**

On the morning of Dec.4 I was about to leave for work just at 1200 GMT when I happened to tune in La Voz de Honduras on 5875 kHz. An excited announcer kept talking about "las fuerzas armadas". I was puzzled but not until I reached the office did I learn that the armed forces had taken over Honduras in a coup.

# QSL Report

Gregg Calkin  
P. O. Box 1345  
Station "B"  
Ottawa, Ontario K1P 5R4  
CANADA

Telephone: (613) 232-0539

Deadline: 15th of month

## REMEMBER TO CHECK THE ADDRESS!!

Just a reminder, for some of our newer members, that one should carefully check the World Radio Television Handbook address for Latin American stations. The WRTVH employs many self-made abbreviations in their station addresses; abbreviations which may not be understood in the particular country concerned or which are not the generally accepted state, postbox or street address abbreviations. So, check it out with the abbreviation list (generally at the first of each country entry) and be sure that should your report not arrive at the station, its through no fault of yours!!

## QSLs RECEIVED

The big news this month is that a number of QSLs have been received from Spanish Sahara, while other DXers have picked up verifications direct from Alma-Ata, the new Radio Northern District in Papua and Tay Bac, N. Vietnam. John Campbell, now in England reports some interesting Clandestine stations as well as the National Amateur Broadcasting Stations in Poland and the Netherlands, while other N.A. DXers have verified some interesting stations in Bolivia, Brazil and Ecuador. Gerry Dexter is also the proud owner of a verie from Portuguese Timor.

AFARS & ISSAS: ORTF, Djibouti, full data folder card for extended Ramadan reception, and including photo of station and city. Reported in French w/3 IRCs for 4780 kHz. (Perry)

ANGOLA: Radio Angola, 11875, black/white picture post card of city scene with full data. 2 months by air for 2 IRCs. (Johnson)

Radio Clube do Moxico, 5005, letter from V/S: Antonio Manuel Pinheiro in 1 month on 3rd try. SASE sent, but not used. Reply by air, and V/S reports station now on 5076 kHz. (Field)

ARGENTINA: RAE, Buenos Aires, 9690/11710, card with no data apart from frequencies, for a report in English and no IRCs. (Eichenhorn)

ASCENSION IS: BBC replied w/Thames card without details; seemail in 80 days for 15260 kHz. (Mayo)

AUSTRALIA: VNG Time Signal, folder-type card showing antennae, buildings and xmt; 17 days returning my 2 IRCs and giving full verification details. (McCall)

ABC/Perth, 9610, full data card in 3 months for 1 IRC (Carlsen) map card in 2 months (Eichenhorn)

Radio Australia, Shepparton, 11765, full data card in 35 days air for 4 IRCs (Wiseberg) 82 days for 9580/11710 w/card featuring the Sydney Opera House (Self) 9580, card in 2 months for 3 IRCs (Megyesy) 21740, card in 10 weeks (Johnson)

AUSTRIA: ORF, Vienna, 9770, silver long card in 3 months; no IRCs (Eichenhorn) 9 wks for 15250, w/full data (Barto) 15335, card in 5 weeks for 1 IRC (Carlsen)

BANGLADESH: Radio Bangladesh, 17935, card in 1 month w/all details for no IRCs (Hafer)

BELGIUM: ORU, Brussels, small card w/full data in 1 month w/sked for 9550. No IRCs. (Megyesy)

► BOLIVIA: Mamore Rdf., 4600, airmail letter in one month after follow-up signed by Juan Dardo Saucedo Paz, Director, and Lucio Montan Escoban, Proprietario-Gerente. (Dexter)

➤ BRAZIL: Radio Clube de Pernambuco, Recife, 6015/11865, letter in Portuguese complete with all details from V/S: J. Martens, Secretario. 1 month on my 12th try in 12 yrs! SASE sent but not used. (Field)

Radio Olinda, 3375, letter in English in 2 weeks on 4th try. Complete data. V/S: J. Ferreira. My 60th Brazilian!! (Field) Excellent, Marlin; congratulations (ed)

Radio Nacional de Brasilia, 15445, bus terminal card without date or time, plus personal note, pennant and p/cards. 10 weeks for English report and 2 IRCs. (Johnson)

Radio Tamandaré, Recife, letter in Portuguese in 1 month on 6th try. Full confirmation data. (Field)

BRITISH HONDURAS: Radio Belize, 3300, map card with date and freq. filled in; 2 weeks for mint stamps, US cancelled stamps, US mint stamps, address label (used) and article on Belize from National Geographic (d'Adolf) 11 days air (Johnson) 2 weeks (Dildine)

BURUNDI: La Voix de la Révolution, 6140, folded card with instrument/tower design on front and date/freq. details, verie on reverse. Inside of card has sked and freq. info. 159 days seamaile for a registered French report, 2 IRCs and mint stamps. V/S is Le Chef du Service Technique. (Churchill)

CANADA: Radio Canada International, Montreal, card, colored p/card of new studio building, info sheet and sked. 2 weeks; no IRCs. (Fino)

CBC Northern Service, 5960, Eskimo sculpture card in 1 month; no IRCs.

(Eichenhorn) 4 weeks w/full data. (Barto)

CKPX, Vancouver, 6080, letter in 24 days for this 10-watt outlet; 2 IRCs sent after reception while on west coast recently. (Henderson)

CFRX, Toronto, 6070, full data card in 8 days for mint stamps. V/S: Clive Eastwood. (Wiseberg)

CANAL ZONE: NBA Time Signal, 19697.5 kHz, full data personal letter from V/S: K. E. Bailey, LGIR, USN Communications Officer. (d'Adolf)

CANARY ISLANDS: RNE, 11800, antenna card with all data in 17 days from Spain for 3 IRCs. (Wallace)

CENTRAL AFRICAN REPUBLIC: Radiodiffusion Nationale Centrafricaine, 5039, standard stencil letter which gives all details, and apologies that QSL cards are not yet printed. 4 months airmail for f/up in French w/2 IRCs. Total time was 7 months. (Foster) 5038, form letter in 1 month air (d'Adolf) 244 days, 145 days after f/up in French with mint stamps which were neither used nor returned. (Campbell) 50 days air for mint stamps and French report. (Mayer)

CHINA: Radio Peking, 9780, card giving date and frequency. No return postage sent w/ rpt. (Eichenhorn) 17715, dancer card with date and frequency in 24 days air (Wiseberg) 15060, multicolored Yenan historical site folder card with no data; sked. 15 days with comment that propaganda was to follow. (Willshaw) 11685, 11 weeks (Barto)

➤ CLANDESTINE: Liberty Radio, 6230, form letter headed with previous frequency of 6815, saying that report has been verified by the technical staff, and is appealing for pledges of funds. 10 days for mint stamps. (Campbell)

Radio London International, 6255, card and letter in 15 days for mint stamps. For merly Radio Atlantis South. Letter says that power will be increased fm present 15 watts to 50 or 100 watts. Station name is now rather misleading, as xmtr appears to be about 100 miles N.W. of London. (Campbell)

Radio Atlantis North, 6280, card and letter with apologies for delay (!) in 15 days for mint stamps. Letter indicates a change to 6260 kHz, which is now heard. Power = 15 watts. QSL posted from Northwich, Cheshire. (Campbell)

Radio Atlantis South N° 2, 6290, full data card and long personal letter about station equipment in 25 days, returning mint stamps. Power = 10 watts. Letter says station has now moved to 9435, but is not heard. QSL posted from Highgate, London. (Campbell)

COLOMBIA: Ondas del Darien, 6085, letter and picture p/card from VS: Ernesto Rivera M. Airmail in 3 weeks and returned mint stamps. (Dexter)

Ondas del Meta, 4885, Spanish confirmation letter from V/S: J. E. Cifuentes, Gerente. Also enclosed colourful booklet about Meta. Total time was 38 weeks, but only 2 months after f/up. Spanish report sent with 2 IRCs both times. (Foster)

Radio Nacional, card w/full data in 1 month for 4955 kHz. (Moggyey) 9655, color p/card showing the Edificio del Banco Francés e Italiano. 58 days air (Fino)

ZYB - 5  
1270 kcs.  
ONDA MÉDIA

# RADIO POTI S. A.

C. G. C. 08.320.008

RADIO POTI

Av. Deodoro, 245 - Fones 2582 - 2534 - C. Postal, 145  
NATAL - RIO GRANDE DO NORTE

ZYI - 21  
4935 kcs.  
ONDA TROPICAL

Natal, 11 de julho de 1972

Natal, July 11th 1972

KENNETH SCHNUR  
2627 East 28 Street  
Brooklyn, New York 11235,  
U S A

We are very glad acknowledging receipt of your kind letter of December 12th 1971 reporting your listening to Radio Poti, NATAL-BRAZIL, on its wave channel, ZYI-21 4935 Kcs 60.30 meter-bands. YOUR DETAILS ABOUT OUR PROGRAMS ARE QUITE CORRECT.

RADIO POTI DE NATAL operates on two channels, the other one being ZYB-5, on 1270 Kcs. Both transmitters are RCA made, power output 1.000 wats. RADIO POTI began its operations on November 27th 1941, and is associated with the papers O POTI and DIÁRIO DE NATAL, all them forming part of DIÁRIOS ASSOCIADOS DO BRASIL, a chain of 24 newspapers, 23 broadcasts, 14 television stations, and 6 magazines, spread all over this country, Brazil.

Yours Sincerely,

*Dalmo de Oliveira*  
Dalmo de Oliveira

COLOMBIA: Radio Super, HJAX, 6065 kHz, replied by personal letter in Spanish from V/S: Gustavo Rivera Mendez, Departamento Técnico, who gives new station address as: Carrera 18 N° 39A-11, Bogotá, D. E. 16 days airmail for 3 IRCs and report in Spanish. Rivera also sent huge plastic bumper sticker advertising network. (Calkin)

Radio Sutatenza, 5075, black and white folder card with studio pictures & station info; all data except time and QSL came seemail in 122 days for an English report and 1 IRC. (Mayer)

CUBA: Radio Habana Cuba, 11930, long yellow and white p/card with full data in English for a Spanish reception. Air in 3½ months; no IRCs (Pino) 9680/15140, card, sked in 6 months (Field) 17815, card in 4 months for no IRCs (Hafer) 3 months (Carlsen) 3 months; no IRC (Barto) 17715, 47 days for no IRCs (Self)

CYPRUS: BBC Limassol, card in 11 days, but with full data typed in for 7230 kHz. (Campbell)

CZECHOSLOVAKIA: Radio Prague, 11990, yellow tower card with all details in 3 months for no IRCs. (Hafer) 11990, building card in 3½ months (Carlsen)

OLB5 Time Signal, 3180 kHz, Observatory card with full data in English in 1½ months for 1 IRC (Megyesy)

DENMARK: Radio Denmark, 15165, tower card with full data in 19 days for an English report and 2 IRCs (Johnson) 15165, full data card in 17 days by air (Wiseberg) 1 month for no IRCs (Hafer)

DOMINICAN REPUBLIC: La Voz de las Fuerzas Armadas, HIFA, 4825, card with nice red, white and blue army pennant. (Barto)

Radio Television Dominicana, 9505, letter verification in 1 month (Megyesy)

ECUADOR: HCJB, Quito, cactus card in 3 months seemail for \$.16 in mint US stamps; all details and sked. (Sellers) 9560, card in 2 weeks from V/S: Roger Stubbe, Dir. of Engineering. (Field)

Escuelas Radiofónicas Populares, Riobamba, 3985, letter, QSL card, p/p/card, station folder from V/S: Washington Luna A., Jefe. Airmail in 15 weeks after 4th try. (Dexter)

EL SALVADOR: Radio Nacional, 5980, blue/white card with freq. only, plus tourist info and pennant in 7 weeks for mint stamps and a Spanish report (Johnson)

ENGLAND: BBC London, Thames card for 9580 in 18 days airmail. (Pino)

ESTONIAN S.S.R. Eesti Radio, Tallinn, 6085, card with print of old drawing of Town Hall Square in 163 days for Swedish report. (Campbell)

ETHIOPIA: ETLF, 9705, usual blue card omitting frequency in 11 months seemail for no IRCs. (Foster) 2½ months with sked (Eichenhorn) 15190, 3 months air for registered English report and 3 IRCs. (Dildine) 9730, blue card in 2½ months (Orcutt) 2½ months air (Slade)

FRANCE: ORTF, 6175, b/w photo card of the Maison de l'ORTF. Full details provided; 2 weeks air for no IRCs. (Foster) 7175, photo card of Paris in 1 month with full data. (Eichenhorn) 15120, 2 months (Eichenhorn) 2½ months for 2 IRCs w/card of view of Paris. (Hafer)

GALAPAGOS IS: La Voz de Galapagos, 6255, card, personal letter and pennant in 1 month on 5th try from V/S: Jorge Narváez who says station now on 3520 (Field) 19 days air with a map card and full data on the reverse along with beautiful pennant, cancelled stamps from S. America and Europe and a note in English asking for newspaper articles on geography. 4 IRCs sent (Michalenska) 59 days for Spanish report and mint stamps (Norke)

G. D. R. RBI, Berlin, 11825, castle and silo card in 3 months seemail (Eichenhorn) Messestadt Leipzig card in 10 weeks seemail; all details (Sellers) 9650, black/white sports series card in 81 days seemail for English report and no IRCs. Sked and station newspaper separate in 58 days. (Willshaw)

G. F. R. Süddeutscher Rundfunk, 6030, long card with yellow, white, black design featuring letters Q S L. 131 days sea (Churchill) 3 IRCs sent w/EE rpt (Perry)

G. F. R. Südwestfunk, Baden, 7265, interesting brown-yellow-green-red card in 19 days. Power given now as 20 kW. (Campbell)

Radio Free Europe, 9725, card in 2 months for report in English. No return postage. (Eichenhorn)

Sender Freies Berlin, 6190, via Bremen transitter; blue card with an impressionistic red antenna picture in 25 days. Text on card is communal for SFB and RB - only indications of station for the QSL being the SFB postage-meter imprint and Berlin postmark. (Campbell)

Deutsche Welle, Wertachtal, 6170, Olympic card in 12 wk air; all details, also sked and booklet. (Sellers) 5 months (Field) 9545/9735, 2 cards air (Eichenhorn) 9765, blue/orange/green Munich olympic card in 91 days (Willshaw)

GHANA: Radio Ghana, card in 2 months for 2 IRCs (Megyesy) 5 weeks (Sellers)

GREECE: NHBI, Athens, 15425, card by registered airmail in 22 days for 2 IRCs. (Carlsen)

GUAM: Naval Time Station, 21760, full data blue card direct from Agana, Guam in 13 days for 1 11-cent airmail stamp on 2nd try. (Norko)

HAITI: 4VEJ, 11835, folder-photo of Vertiers Memorial, and giving date, time and freq. (Eichenhorn)

HONDURAS: Radio Progreso, 4920, long verie letter in Spanish with pennant; 1 month for 1 IRC (Megyesy)

La Voz Evangélica, HRVC, Tegucigalpa, 4820, veri card in 21 days (Megyesy)

HUNGARY: Radio Budapest, 9833, b/w photo card with several views of Budapest and issue of Budapest International. 18 days airmail for no IRCs. (Fino) 2 months air (Eichenhorn) 7½ weeks seamail with card and sked. No return postage sent. (Estes)

INDIA: AIR, 11775, card by air in 3 months for report in English (Eichenhorn) 9525, card airmail in 4 months (Norko)

INDONESIA: RRI Jogjakarta, 5047, RRI card with all details on reverse plus short note in English and Indonesian from V/S: Tjptosunardi, for Public Relations Dir. 137 days seamail for Indonesian report and mint stamps. (Churchill)

RRI Pontiniak, 3344, pleasant English verie letter from V/S: Cornell R. H. Tobring, B.A., for NASWA Indonesian report (which he "greatly appreciated") although he replies in English "for our convenience". 1 month (Perry)

RRI Palembang, 4855, English verie letter with full details and info about Sumatra. Reported in English and QSL received in 5 weeks. Sent registered airmail. (Perry)

RRI Surabaya, 3975, card showing studio building at Surabaya, w/full details provided. Reply received direct from station in 1 month airmail for 1 IRC. (Foster)

IRAN: Tehran, 15084 kHz, plain white card in English with full details from "Foreign Programmes, NIRTW" in one month air for registered English report and 3 IRCs. Second try. (Dildine) long white card with full details; 1 month air (Estes) 2 m. registered airmail after f/up with 1 IRC (Foster) 1½ months (Eichenhorn)

IRAQ: Radio Baghdad, map card with photo in corner; 17 days with travel folders for 2 IRCs and registered report. (Kelley) 15400, suspension bridge card with full data in 84 days seamail for 2 IRCs. (Mayer)

ITALY: RA1, 9575, map-antenna card with/all details in 2½ months for no IRCs (Hafer) 11810, full data card in 5 months by seamail for 2 IRCs. (Wiseberg) 2 months followed by sked (Megyesy) 1 month seamail (Estes)

JAPAN: NSE, Tokyo, 9595, yellow card with full data via airmail in 2 months for 2 IRCs. (Norko)

Radio Japan, 15445, card in 12 days by airmail showing date and frequency. Returned 1 IRC 1 sent (Wiseberg) 10 days for 11600 (Eichenhorn)

JORDAN: Hashemite Broadcasting Service, 7155, post card with view of "Philadelphia" in 19 days for 1 IRC. Thought Philadelphia was in S.W. Turkey. (Campbell) 11810, color card of King Feisal Street in Amman. Full details; 1 month air (Foster)

GOVERNMENT OF INDIA  
OFFICE OF THE STATION DIRECTOR  
RADIO KASHMIR, SRINAGAR.

\*\*\*

No. 3(7)E/72

Dated Srinagar, the 10.1.72.

Mr. Donald Jensen,  
5204 70th Street,  
Kenosha, Wisconsin 53140 USA

Dear Mr. Jensen,

This is to acknowledge the receipt of your letter dated 24.12.1971. I entirely agree with you that it is difficult to receive Indian Station in your part of the world. Reason being, that the great circle path between India and most part of the USA. passes through the auroral zone causing large attenuation in the signal. The reception which you got is being confirmed by us. It may be categorised as a case of "Freak reception". However, I would be grateful if you kindly continue to take interest in our organisation and let us know whether you get the reception of our transmissions ~~gx~~ quite often.

We are broadcasting on S.W. from Radio Kashmir, Srinagar on a 7.5 KW transmitter with a dipole antenna. Timings of our broadcast are given below :-

<u>Time IST</u> <u>(GMT + 5½ hrs.)</u>	<u>Frequency in kHz.</u>
0700-0820	3271
0830-1010	7270
1130-1630	7270
1700-2230	3277

(upto 2300 hrs on Saturdays only)

We are shortly proposing to have an additional wave change in the morning. The schedule will be effective upto 4.3.72.

You are likely to receive our transmissions more during the period 1700 - 2230 hrs. when ionospheric absorption is expected to be ~~minimise~~ minimal.

Yours faithfully,

*J. S. Bhatnagar*  
(J. S. BHATNAGAR)  
ASST. STATION ENGINEER  
FOR STATION DIRECTOR

- KAZAKH S.S.R. Alma-Ata, 10530, replied by colorful card in Russian with date and frequency in 4 weeks airmail. No return postage sent; and report was in English. QSL shown below. (Barto) after 4 years of frustration and numerous reports, have finally received card in Russian direct from Alma-Ata with photo of municipal bldg., airmail in 5 weeks. (Sizer)

ALMA-ATA, АКАДЕМИЯ НАУК КАЗАХСКОЙ ССР.  
АДРЕС: КАЗАХ ССР ТЫШИН АКАДЕМИЯСЫ.  
Фото Б. Тышину

Уважаемый г-н С. А. Бартоу  
Казахские радио с удо-  
вольствием подтверждает правле-  
нием приём <sup>ваш</sup> нами 22.11.1972 г.  
на частоте  
10.520 кГц. С уважением А. Кашаев

Кому \_\_\_\_\_

Индекс предприятия связи и адрес  
отправителя: \_\_\_\_\_

Имя и номер предприятия связи СССР (1968-70) или \_\_\_\_\_

Индекс предприятия связи места назначения.

- KOREA (REP): WOFX, Seoul, 9640, card in 1 month for 1 IRC (Carlsen) 15335, full-data card in 4 weeks air plus large (17 x 8) blue pennant (Johnson) 15335, full data card with the frequency incorrectly given as 15155 (Wiseberg)
- KUWAIT: Radio Kuwait, 15415, map folder card with date, time and frequency in 24 d. for 1 IRC. (Carlsen) 15415, folder card in 3 months (Barto) 15415, folder dress card with all data in 2½ weeks for 2 IRCs. (Hafer)

- LIBERIA: ELWA, 4770, red, black and white card showing a native beating a drum. All details typed in. 9 weeks after f/up with 2 IRCs. Total time: 6 months (Foster) 11950, card in 28 days for English report and 2 IRCs (Willsaw)

Equipment used during transmission monitored: Name Edward J. Insinger

TRANSMITTERS

50 KW SW (two in operation) \_\_\_\_\_ 24 Madison Ave.

\_\_\_\_\_ 101 KW MW \_\_\_\_\_ Summit, NJ

\_\_\_\_\_ 10 KW SW (two in operation) \_\_\_\_\_ USA

ANTENNAS

Target Area	Type
<input checked="" type="checkbox"/> Middle East	Rhombic
_____ Ghana/Nigeria	Curtain Array
_____ Congo	Curtain Array
_____ Liberia	Vertical Array
_____ Liberia	Hi Incident Angle
_____ North Africa	Curtain Array
_____ West Africa	Hi Incident Angle

We acknowledge your report of ELWA's transmissions on 11.940 Mhz at 2040 GMT on Feb. 11, 19 72.

ELWA beams up to five simultaneous multi-lingual transmissions, using equipment listed at left. The transmitter and antenna in operation at time of your report is checked (✓).

ELWA, the radio arm of the Sudan Interior Mission, broadcasts the good news that "God so loved the world that He gave his only begotten Son that whosoever believeth on Him should not perish but have everlasting life." John 3-16.

LIBERIA: Voice of America, Monrovia, 17875, 30th Anniversary antenna card in 8 days from Washington (Self) 6055, card (Barto)  
LITHUANIAN S.S.R. "Radio Vilnius", 11920, white flower card w/full data in 1 1/2 mos. for no IRCs. (Megyesy)  
LUXEMBOURG: CLT shield and radio tower card; full data in 110 days seairmail for IRC. (Mayo)

MALAGASY REPUBLIC: RTVM, Tananarive, 17730, no data card w/verie statement written on the back w/sked; via airmail in 14 weeks for NASWA French report and 2 IRCs. (Noroko)

Radio Nederland, 15105, card in 10 weeks w/full data (Barto) 2 weeks for 1 IRC; 11730 kHz (Orcutt) 17810, map card in 8 days airmail (Mayo) 9 days airmail for 2 IRCs (Dildine)

MALAWI: Malawi Bc Corp, 3380, form letter with full details in 11 days airmail for 2 IRCs and p/card of ancient Cambridge architecture. V/S: G. K. Macdonald, Director of Engineering. (Campbell)

MALAYSIA: BBC relay, Tebrau, 11910, card in 6 days but full data typed in (Campbell)

MARTINIQUE: ORFF, Fort-de-France, 3315, b/w photo card with date filled in; 2 weeks for French report, mint stamps, US mint stamps, sked. (d'Adolf)

MAURITANIA: Nouakchott, 4850, four-color map card with schedule on reverse in 7 mos for NASWA French report and 2 IRCs. Via airmail. (Duba) 8 months (Kusalik) 42 days for French report and 2 IRCs (Noroko) 6 weeks air for French report and mint stamps. (Johnson)

MEXICO: Radio México, XERMX, 15125, full data letter in Spanish via airmail in 75 days for NASWA Spanish report and 1 IRC. (Noroko) 15125, letter in Spanish w/IRC. My 50th country verified. (Carlaen)

MONACO: Trans World Radio, 7290, black/white antenna card and schedule in 22 days for English report and 2 IRCs. Full data with V/S initials P.W. (Willshaw)

MOROCCO: VOA, Tangier, 7270, blue antenna card (Barto)

MUZAMBIQUE: LM Radio, 11780, studio card in 2 weeks for English report, mint stamps, US cancelled stamps, via airmail. (d'Adolf)

NETHERLANDS: Radio Nederland, new photo card in 10 days air w/full data (Eichenhorn)

PA0AA, National Amateur Radio Station, 3600, globe card in 27 days for 1 IRC. Scheduled 1900-2130 Friday broadcast reported. Address: VERON, P. O. Box 9, Amsterdam 1000. (Campbell) Very unusual, OM (Ed.)

NETHERLANDS ANTILLES: Radio Trans-Mundial (TWR), card for 11815 in 10 days (Calkin), Trans-World Radio, 11815, card with pic of station (Eichenhorn) 12 days air (Wallace)

NEW ZEALAND: Radio New Zealand, globe card in 3 months for 1 IRC (Carlsen) 86 days seairmail for 4 IRCs. (Wallace)

NIGERIA: Radio Nigeria, Calabar, airletter in 20 days for 6145 kHz by air for no IRCs and English report. (Henderson) 210 days seairmail for 2 IRCs (Churchill) 6144, aerogramme with full details in 2 1/2 months. V/S: E. B. Ntekim for OIC. (Dildine)

Radio Nigeria, Benin, 4932, simple card in 12 weeks air for f/up (8 months from original) w/2 IRCs; all details with skeds. (Sellers)

Voice of Nigeria, Ikorodu, 15185, flag card in 3 months by air. Full data given. (Eichenhorn) 7255, card in 3 months air (Eichenhorn)

NORWAY: Radio Norway, Oslo, 17825, photo of Oslo University in 1 1/2 months; full data (Eichenhorn)

PAPUA: Radio Northern District, Popondetta, 2468, Administration folder QSL giving all details except date. 8 days air for no return postage. First in Australia. (Foster)

VLT9, Port Moresby, 9520, blue/yellow/white map card in 15 days for 2 IRCs and English report. Stated that programme schedules are no longer produced. Full (Willshaw)

PERU: Radio Atlántida, Iquitos, 9625 kHz, letter in Spanish with date and frequency statement and pennant via airmail in 80 days for NASWA Spanish language report form, and mint stamps. (Noroko)

PHILIPPINES: FEBC, 11890, card and rel. literature in 2 1/2 months air for 3 IRCs (Duba)

## RADIO SAHARA

~~XXXXXXXXXXXX~~

El Aaiún, 23 de Noviembre de 1972

Dr. F. Earle Hall  
Winchendon, Mass.  
U.S.A.

Estimado amigo:

Apreciamos su valioso informe de recepción, de gran interés para nuestro departamento técnico, y le confirmamos que efectivamente fue Radio Sahara la emisora que Vd. escuchó.

Nuestra estación, E.A.J. 203 Radio Sahara, de la Red de Radio nacional de España, reúne las siguientes características:

ONDA MEDIA.-

Potencia: 50 kilowattios (Con una emisora de reserva de 5 kw.)  
Frecuencia: 656 kilociclos, equivalentes a 455'7 metros.

ONDA CORTA.-

Potencia: 10 kilowattios (Con una emisora de reserva de 10 kw.)  
Frecuencia: 7.230 kilociclos, equivalentes a 41'49 metros.

Las emisiones -comunes para ambas ondas- dan comienzo a las 07'55 para finalizar a las 23'00 horas (GMT). De 08'00 a 11'00, y de 19'00 a 23'00 transmitimos en lengua árabe y "hasania" (dialecto local), siendo el resto de las emisiones en lengua española.

Nuestros estudios están instalados en El Aaiún, ("Las fuentes", en árabe), capital de la provincia española de Sahara, con 38.000 habitantes, situada a 25 km. de la costa y a 250 km. de Las Palmas (Islas Canarias)

Le agradecemos cordialmente su colaboración y esperamos contarle entre nuestros oyentes.

En nombre del Director y de todo el personal de esta emisora, le saludamos respetuosamente.

Suyo affmo.:

Fdo./ Federico Campos Alvarez  
Departamento Realización y Montaje

PHILIPPINES: (FEBC cont'd) card for 11920, in 82 days airmail; no IRCs. Card shows picture of boy riding water buffalo. Religious material and sked sent. (Wickland) green card in 10 weeks air for 3 IRCs. (Sellers)

Voice of America, 15365, Anniversary card with the date and site in 25 days returning my IRC. (Wiseberg) Which site? (Ed.) Porc, 9630, card in 2 weeks. (Barto)

POLAND: Warsaw, 11890, map card in 2 months with full data. (Eichenhorn) 6135, map card in one month. No return postage. (Carlsen)

SP5ZK, National Amateur Station, 7062, ARRL-type schematic emblem card in 25 days. Report on WRTVH-scheduled broadcast. (Campbell)

PORTUGAL: Radio Portugal, 21495, world exploration card in 5 weeks w/full info. No IRC. (Barto)

→ PORTUGUESE TIMOR: Emissora de Radiodifusão de Timor, Dili, 3668, QSL card, airmail in 4 weeks. (Dexter)

QATAR: Qatar Broadcasting Service, 9570, card with a map of the Persian Gulf area. Full details and confirmation statement on reverse. Total time 10½ months, but received in only 19 days airmail after 2nd f/up. All reports sent with 2 IRCs. (Foster) card airmail with full data in 16 months and 2 f/ups. (Shaw) Card is new (Ed.)

RHODESIA: RBC, 3396, color drawing full data card in 11 days for English report and 2 IRCs; airmail. (Johnson)

ROMANIA: Radio Bucharest, 9570, multicolor folk architecture card, sked and personal letter signed: Maria Montero Triana in 98 days for English report and no IRCs. Full data and via airmail plus literature for SWL Club. (Willshaw) 11940, card w/full data in three months for IRC (Carlsen)

RUSSIAN S.F.S.R. Radio Peace and Progress, 15350, yellow card in 4 months seamail. (Eichenhorn) 11980, card by air in 4 months w/all data (Sellers) 15260, all data; seamail in 80 days. (Mayo)

Radio Moscow programme, 11900, card in 3 months (Eichenhorn)  
2 months for 15180/15470 (Barto)  
Radio Moscow, Moscow, 7205, card in 3 weeks for aerogram rpt (Perry)  
Radio Moscow, Tula, card in 3 weeks for aerogram report (Perry)  
Radio Moscow, Khabarovsk, 12050, card in 6 months air (Henderson)  
Radio Moscow, Konevo, 11850, card indicating this site. Anyone know whether this is in Arkhangelsk or the one west of Sverdlovsk? (d'Adolf)  
Radio Moscow, Petropavlovsk-on-Kamchatka, 15180/15140; 3 weeks for aerogram report. (Perry) 15140, card; no IRCs (d'Adolf)  
Radio Moscow, Sverdlovsk, 7150, card in 3 weeks for aerogram rpt.

(Perry)  
Radio Moscow, Vladivostok, 11690/15130, cards in 6 months airmail. (Henderson) card by air in 29 days; no IRCs. Full data (Schultz)

RWANDA: Deutsche Welle, 11965, map card in 5½ months for no return postage; station enclosed a pennant. (Orcutt)

RYUKYU IS: VOA Okinawa, 7165, full data card, with site, in 2 weeks for no return postage. (Johnson)

SAUDI ARABIA: Saudi Arabian Broadcasting, 6000, crossed swords card in 1 month for 1 IRC. V/S: Werner Storg, C. E. (Carlsen)

SENEGAL: Radiodiffusion du Sénégal, 4890, photo card of stringed instrument leaning against a tree, w/full details given. 7 months for French report with 1 IRC. (Foster)

SIERRA LEONE: Radio Sierre Leone, Freetown, 3316 kHz, airletter in 8 months for EE report and 3 IRCs. (Henderson)

SINGAPORE: Radio Singapore, 5052, housing development card with full data in 13 days for 3 IRCs; one of which was returned. (Orcutt)

SOLOMON ISLANDS: SIBS, 3995 sent full data map card for VQ04 in 25 days airmail for 2 IRCs. (Noroko)

SOUTH AFRICA: Radio RSA, 9695, full data card in 19 days air for 2 IRCs, together w/sked. (Wiseberg) 11970, Lions and Game Reserve card in 2 months airmail (Eichenhorn) 11 days for 9695 (Self)

T. C.  
TARIM BAKANLIĞI  
DEVLET METEOROLOJİ İŞLERİ  
GENEL MÜDÜRLÜĞÜ

Hava İşleri Md. No. 3310

Ankara

Konu

29 November, 1972

Mr. Ralph W. Perry,  
301 E. Chalmers St.  
Univ. of Illinois  
Champaign, Illinois 61820  
U. S. A.

Dear Perry,

I have received your kind letter of November 6, 1972 and thank you most sincerely for your valuable report you were so kind as to send.

First of all I would like to point out with great pleasure that your report on the reception of the Voice of Meteorology monitored on 6900 kHz is entirely in conformity with our transmissions being made.

Our Service employs a transmitter with a power of 2.5 Kw for the Voice of Meteorology. The antenna used is a delta matched open wire balanced 500-600 Ohms and 76 feet long by a height of 56 feet from the ground.

Daily programme of the Voice of Meteorology consisting of both music and weather news for the public is as follows:

0455 to 0500 GMT	Identification signal, a melody performed with " saz ", an instrument like a twangy mandolin.
0500 to 0700 GMT	Turkish folk music with weather news at the interludes during the programme.
0800 to 0940 GMT	Ditto
1200 to 1615 GMT	Ditto
1800 to 1930 GMT	Ditto

Dear Perry, hoping that the above given information will be of some use to you, I remain,

Cordially yours

Prof. Dr. Osman B. ÇOLAKŞAN

for Director General

SPAIN: RNE, 11925, card w/all data w/pennant in 2 mos (Hafer) 3 months (Barto) 11925, photo card of the control room in 5 months together w/sked. (Eichenhorn)

▶ SPANISH SAHARA: Radio Sahara, El Aaiún, 7230, nice letter from V/S: Federico Campos Alvarez w/sked. Nice verie statement, but no specific data. 14 months total (Perry) after 4 reports, stamps, 5 IRCs; reply in 12-15 months air (Hall) 18 months and several f/ups later for 7230 (Shaw) over 1 year, several 45 rpm records sent as gifts from above V/S at Departamento Realización y Montaje, Apt. 106, El Aaiún. (Sizer) long personal letter for relay transmitter on 4627 kHz giving all details except time and w/many questions about Cambridge; 13 days for Spanish report w/2 IRCs (Campbell) 4627, letter stating 4627 is "only temporary frequency"; 2 IRCs (Kusalik)

SRI LANKA: Radio Ceylon, 15120, p/p/card of lace making in 78 days airmail for 2 IRCs and EE report. Full data. (Mayer)

SWEDEN: Radio Sweden, 9630, full data card in 6 wks (Barto) 1½ months (Eichenhorn)

SWITZERLAND: SBC, 9535, photo of log periodic antenna card in 2 mos (Eichenhorn)

TAHITI: Radio Tahiti, 15170, mermaid card in 160 days for 1 IRC (Mayer) 204 days for French rpt (Campbell) 1 month (Carlsen) 9½ months air (Duba) 4 months (Duba) 2½ mos. (Eichenhorn) 5 months (Dashane) 4 months (Norko) 74 days (Wallace) 6 months (Johnson)

TAIWAN: Voice of Free China, Taipei, 17720, full data card in 1 month air (Wiseberg)

▶ TANZANIA: Radio Tanzania, 15435, yellow card in 43 days air for English rpt (Mayer)

TURKEY: Voice of Meteorology, Ankara, 6900, friendly, full data letter w/sked in 1 month by air from V/S: Prof. Dr. Uman E. Cölasan, Dir-Gen. (Perry) 1 month for mint stamps and an English report (d'Adolf) long personal letter in English in 19 days for 1 IRC and a Turkist report. (Campbell)

TUNISIA: Tunis, 6195, p/p/card with full data in 20 days for 1 IRC. (Carlsen)

VENEZUELA: Radio Popular, 4810, large folding card with "thank-you" note and no details in 10 months sea for NASWA Spanish report and mint stamps. (Sellers)

VIETNAM (NORTH): Voice of Vietnam, paper folder QSL, specifying "at Tay Bac" (6376 kHz) in 3 months airmail after I returned original with request for site. (Dexter)

And that, gentlemen, concludes another fine month of rare DX. Special tax to the following who made it possible:

Steve d'Adolf, New Jersey

Sam Barto, Connecticut

G. A. Calkin, Ontario

John Campbell, England

Bob Carlsen, Ohio

Bruce Churchill, California

Gerry L. Dexter, Wisconsin

R. Stephen Dildine, Virginia

Mark A. Duba, Vermont

Richard Dushane, Michigan

S. W. Eichenhorn, Michigan

Steve Estes, Virginia

Marlin Field, Michigan

Henry Fino, New York

David Poster, Australia

Gary Hafer, Pennsylvania

F. Earle Hall, Massachusetts

Eric Herson, Ohio

D. C. Johnson, California

Greg Kelley, Virginia

Edward Kusalik, Ontario

Alan Mayer, Illinois

Stanley Mayo, Maine

Calvin McCall,

Dave Megyesy, New Jersey

Henry Michalenka, R. I.

Bob Norko, Connecticut

Ralph Perry, Illinois

Bill Schultz, Penna.

Charles Self, Minn.

Harold Sellers, Ontario

Ed Shaw, Virginia

Alvin Sizer, Connecticut

Henry Slade, Mass.

Steve Wallace, Penna.

Donald Wickland, Wisc.

Fred Willshaw, S. C.

Michael Wiseberg, Ont.

#### SCOREBOARD

Just a reminder of the upcoming schedule for Scoreboard listings. In upcoming months we will spotlight the following continents: March: AFRICA; June: ASIA; September: EUROPE and December 1973: OCEANIA.

And so until February, best 73s, gud DX and don't forget to report!!

*[Handwritten signature]*  
GREG

# LISTENER'S Notebook!

Dan Ferguson  
1521 Smith Road, Apt. 7  
Charleston, W.Va. 25314  
U. S. A.  
Phone: (304) 346-5738  
Deadline: 18th of month

\*\*\*\*\*

USSR We present here, with permission of the BBC Monitoring Service, the frequency usage chart for the Radio Moscow Home Services, for winter/spring 1972/73.

The RM Home Service is broadcast in the following programs:  
FIRST, 0200-2200...FIRST A, 1900-1500...FIRST B, 2100-1700...FIRST C, 2300-1900...  
SECOND, continuous...THIRD, 0600-2000. These will be designated as I, IA, IB, IC, II, III, respectively.

Freq.	Time/Pgm	QTH(per ITU)	Freq.	Time/Pgm	QTH(per ITU)
15505	0630-1000/II		7340	1600-2100/I	
15480	0400-1100/IA		7300	0700-1330/II	
15470	0800-1300/I		7275	0200-0600/I	Erevan
15425	0500-1000/IB	Moscow	7275	1200-1700/I	Erevan
15410	0900-1100/I	Lvov	7275	2300-0200/IC	Erevan
15275	0600-1100/IC		7255	0600-1600/III	
15245	0600-1100/I	Leningrad	7200	1000-1200/III	Vladivostok
15100	0600-1300/I		7195	1200-1800/III	Tula
14860	0800-1300/I		7120	2100-0300/IA	Kazan
12070	0400-1300/I		7100	0200-1400/I	
12060	0600-1200/II		6185	0200-0400/I	
12045	0400-1700/I		6185	0000-0200/IC	
12005	0800-1500/I		6125	0200-2100/I	Ashkhabad
12000	0500-1000/I		6125	0000-0200/IC	Ashkhabad
12000	1000-1300/II		6115	0200-0400/I	
11955	0400-1300/I		6115	2300-0200/IC	
11920	0500-1300/IC	Moscow	6110	0330-1330/II	Baku
11870	0600-1300/III		6100	2300-0200/IC	Kursk
11840	0330-2100/II		6100	0200-0400/I	Kursk
11805	0530-1300/II	Kazan	6090	0200-0400/I	Irkutsk
11800	0800-1800/III		6075	1400-2100/I	Sverdlovsk
11795	0600-1200/III	Moscow	6015	0000-0600/II	Krasnoyarsk
11790	0800-1800/III		6005	0000-0200/II	Voronezh
11730	0600-2100/I		6005	1200-1600/II	Voronezh
11730	0700-1030/II	Chita	6000	0200-0500/I	Moscow
11700	0500-1030/II	Serpukhov	6000	1400-1800/I	Moscow
11690	0700-1500/II		5980	2300-0500/IC	Riazan
11630	0500-1500/I		5950	0000-0600/II	
11570	0600-1200/III		5935*	0300-2100/II	Riga(per BBC)
9810	0330-1400/I		5910	2200-0200/II	
9800	0800-1300/I		5910	0200-0600/I	
9775	0600-1400/I		5910	1400-2200/I	
9635	0200-2100/I		5900	0200-2200/I	
9490	0200-2100/I		5900	2200-0000/II	
9470	0700-1500/II		5900	0000-0200/IC	
7440	0600-1600/I		5035*	1600-2200/I	
7420	1100-1600/I		5035*	2200-0330/II	Alma Ata(per BBC)
7400	1200-1600/IC		5015*	1630-2100/I	Arkhangelsk("")
7400	2300-0500/IC		4930	0000-2100/II	
7370	1200-1500/IC		4895	0900-1300/II	Note: R.Moscow often
7370	2300-0500/IC		4895	1800-2000/II	uses the same freq. for
7350	0400-2100/I		4895	1700-2100/I	different px from
7350	2100-0300/IB		4885	1400-1900/IC	different stations.

## USSR R.Moscow Home Service Frequency Usage Charts (continued)

Freq.	Time/Pgm	QTH
4885	2300-0400/IC	
4860	0100-2200/II	
4850	0000-0200/IC	
4780	1500-2200/I	
4055	0600-2000/III	

\* These frequencies may carry local programs during the specified time-span.

Due to receptions and interference, the beginning and end of operational spans of some frequencies have not been fully determined.

This data is published by permission of the BEC Monitoring Service. NASWA cannot authorize its republication.

Additions and corrections/changes to the above list are welcomed.

\*\*\*\*\*

Someone asked for the address of the DX Stamp service a couple of weeks ago & at the time I couldn't find it. The address is G.N.Robertson, 83 Roder Parkway, Ontario, NY 14519. Write them for a price list. DXers are reminded that the sending of mint stamps for return postage seems to work better than IRCs.

Members desiring information on the new model Joystick Antenna, Joymatch Antenna Tuning Units & new "Budget Line" items for DXers from Partridge Electronics of England, can write Bill Paschke, 855 Elm Street, Beloit, Wis. 53511 for that information.

DEUTSCHE WELLE has replied to a letter written them by Larry Yamron. The reply apparently was written by one who didn't really know much about SW - "...it's just that the meterbands are too close together." The writer, one Michael Dirks, notes that Moscow has abt 100 transmitters, 88000 kw, VoA 116 txers, 19000 kw, BBC 70 txers, 8000 kw, Peking 120 txers, 21000 kw, while poor DW has only 17 transmitters with 3500 kw. He points out that BEC, VoA, etc., broadcast on several different frequencies (so does DW) and one can always tune another freq. He claims DW "took special care in selecting the frequencies in order to avoid interference of other stations"...It all sounds like a "Broadcasting room" theory of frequency selection. You want another frequency, take it!!

We again suggest that DW (and others who take over established frequencies of other stations) should have the station and embassies flooded with letters of protest.

\* WORLD HOLIDAYS, compiled by Steve Sykes...

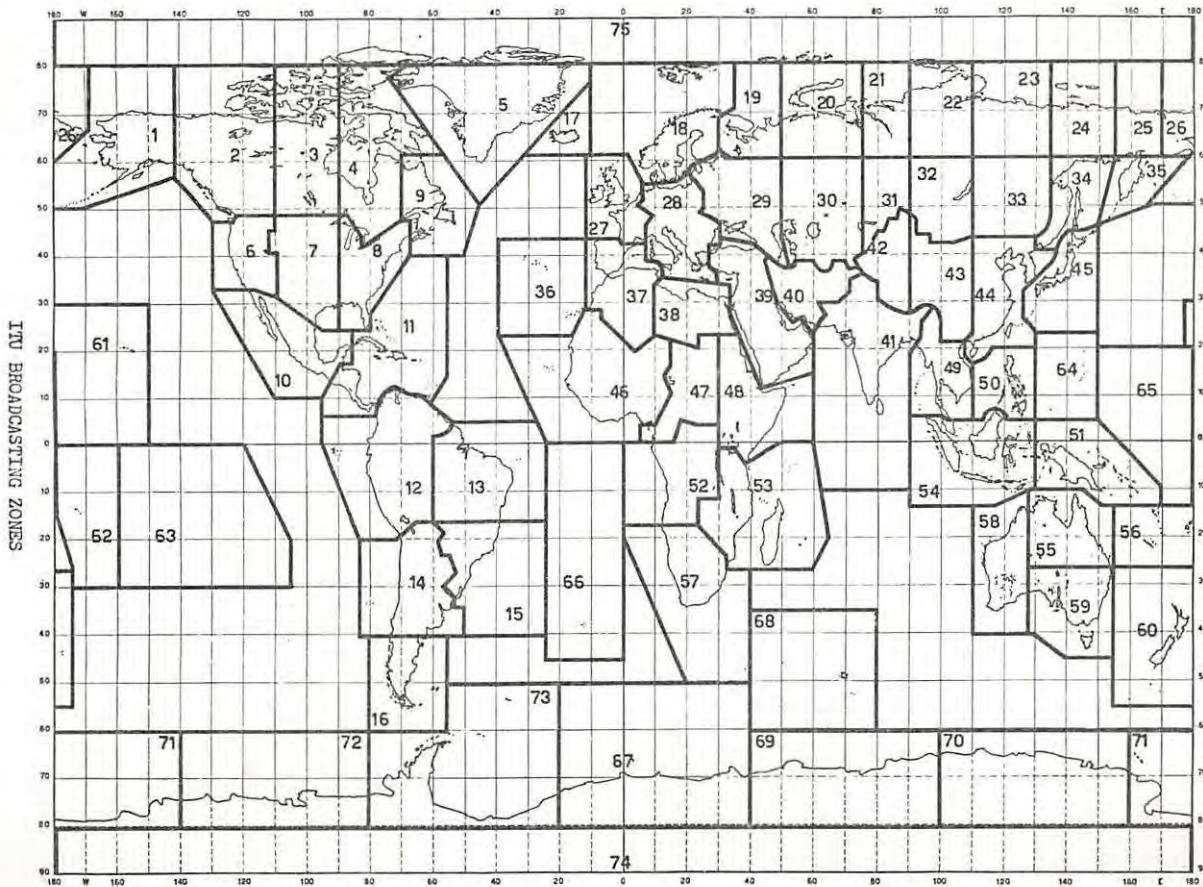
\* Jan 11-Nepal, Prithivi Jayanti  
 \* Vietnam, Buddha's Enlightenment  
 \* Chad, National Day  
 \* 12-Zanzibar, Zanzibar Revolutionary D.  
 \* 13-Ghana, National Redemption D.  
 \* 14-Singapore, Hari Raya Haji  
 \* 15-Japan, Ryukyu Is., Adult's D.  
 \* Turkey, Kurban Bairam (thru Jan 18)

Note: Sometime during the 3rd week of Jan, the Islamic holiday of Id-Al-Adha takes place, lasting several days, but may vary from country to country.

17-Mali, National Holiday  
 19-Malaysia, Birthday of Sultan  
 20-Ethiopia, St.Michaels Da'y  
 20 Mali, Army Day  
 20-Mauritius, Cavades  
 21-Nepal, Basanta Panchami  
 Dominican Rep., Altagracia Day  
 23-India, Ghadir Festival  
 25-Brazil, Foundation Day(São Paulo)  
 26-Dominican Rep., Duarte's Day  
 India, Republic Day  
 Papua/NG, Australia Day  
 27-Monaco, St. Devote Day  
 28-Rwanda, Democracy's Holiday  
 28-Malaysia, Hari Raya Haji  
 29-Australia, Australia Day  
 Feb 1-Nicaragua, Air Force Day  
 Haiti, Presidential Guard Day

Note: Lunar New Year around Feb 3. For several days after many FE cys have celebrations, mainly China, Malaysia, Singapore, Vietnam. Also around Feb 3, for abt 10 days, Islamic holiday of Muharram. First & last days most important. Watch the Arab world, also Sri Lanka & Indonesia on this one.

4-Sri Lanka, Independence Day, Sinhala & Tamil New Year's  
 5-Mexico, Constitution Day  
 8-North Korea, Founding of the People's Army Day  
 9-Lebanon, St. Maron Day



# LOG REPORT

NASWA LOG REPORT  
P.O. Box 8452  
S.Charleston, W.Va. 25303

Deadline: 12th of the month

Due to an emergency, Al Niblack, who was going to edit this portion of Log Report, was unable to do so. Instead, it is being edited by Ed Shaw and Dan Ferguson at the Mountain Creek DX Resort, in the Appalachian Mountains of West Virginia. We trust you will forgive us any editing errors, as the section is being prepared in spare moments between DX catches ranging from Azad Kashmir to Ziguinchor (see below).

\*0100 = s/on 0100, 0100\* = 0100 s/off, // = parallel, a = approximately, EE = English, (SS = Spanish, etc.); EGFP = excellent, good, fair, poor; EIR = East is Red; f/o = fade out; GSTQ = God Save the Queen; Indon = Indonesian; Int = Internationale; IS = Interval Signal;; lbx = letterbox; lol = local; M = man; mx = music; NA = National Anthem or North America; NF = new frequency; nx = news; px = program(ming); QRX = interference; QRN = static; rel = religious; RF = reactivated frequency; t = tentative; TC = time check; tx = transmitter; v = varies; w/ = with; w/ = woman; wx = weather.

- 1980 MEXICO XEER, 2x990, 0113 w/Salinas y Rocha ad; good w/ mx 0038 later date (Hauser)
- 2000 UNID Spanish yelling 0043, 2 x 1000(Hauser)
- 2010 MEXICO XETOR, 3 x 670; 0020 norteña; presumed ID, hrd here before(Hauser)
- 2090 GUATEMALA TGSL, 2 x 1045; R. Sol; ads, ID, from 0019(Hauser)
- 2200 NICARAGUA YNQ, La Líder, Managua; 2 x 1100; to 0502\* w/beaty mx; no mention of former Voz de la Victoria slogan; this harmonic first hrd in 1966(Hauser)
- 2240 MEXICO XETR, 2 x 1120; previously Unid R.Ritmo is in San Luis Potosí state, not sure of town; hrd 0017-0106\*. (Hauser)
- 2310 ELSALVADOR YSCF, Ondas Orientales, 2 x 1155, presumed the one w/rhythmic mx 0505, 11/21 check. (Hauser)
- 2360a UNID, maybe R.Maya, Guatemala; 1058 lite, LA type mx, uncopiable armts(Sellers)
- 2340 O.O.P.S.(new abbreviation for "out of place, sorry") COLOMBIA R.Ambalá, 2350-0458\*
- 2400 COLOMBIA R. La Sultana del Valle, Cali, 2 x 1200, new harmonic, various dates at times from 0016 to 0501\*, 11/24 on late, past 0533.(Hauser)
- 2401.2t VENEZUELA R.Tiempo, YVPD, apparent ID 0000, "R. ... Tiempo, but mentioned Colombia several times. (Shaw/Ferguson)
- 2468 PAFIA R.Northern District, Popondetta, 0940 vernaculars, new stn, CEM songs to 1000\* w/GSTQ. 2 kw, sked 0800-1000. Languages used are Ploice Motu and Orokaiva. Address: P.O. Box 137, Popondetta. (Foster-Australia)
- 2480 BRAZILL?? Very weak, PP, possibly Brazil, useless sig 2355(MCDXA - that's the Mountain Creek DX Association, just formed, while I was typing this and Ed Shaw was chopping wood. DF)
- 2680 HONDURAS?? HRH6??, 2x1340, weak 11/20 w/CST TC, light mx, gone by 1220. The formerly powerful R. El Mundo has not been audible evenings since early October (Hauser)
- 2740 PERU OAXIG, 0038, SS noted briefly, presumed previously IDD R.Tumbes, Cadena Nacional. (Hauser) (2 x 1440 -Hauser)
- 2880 COLOMBIA R.Rejolo de Tuluá, 0506 Colombia ads, SA nx; 0600 ID, CARACOL plug
- 2898 GUATEMALA R.Nacional Mazatenango, 2 x 1449, 0011 mx, 0321 TC, ID, good at 0113; hrd last year also(Hauser)
- 2909 NICARAGUA R.Eco de las Brumas, Jinotega; good at 0114 check(Hauser)
- 3000 MEXICO XEPN, Piedras Negras, Veracruz, 2 x 1500, ID as R. Piedras Negras, fgy as 1500 kHz, noted 2324(Hauser)

- 3010a UNID 1105 lang, something here but almost inaudible, man talking. Harmonic?  
(Sellers)
- 3135 GUATEMALA TGSL, R.Sol; 2x1045; 0032 mentioned Cotzumalguapa, often hrd on 2090, first time this season on third. (Hauser)
- 3170 CZECH OLB5; time pips 0230, fair(Heutte)2330 vy weak, LSB best, fair(Shaw)
- 3176 MEXICO XEPT, 2 x 1588, 0028 & 0051 checks proved them //(Hauser) (Hauser)
- 3200 DOMINICAN REPUBLIC HIFA, LV de las Fuerzas Armadas, 2x1600, presumed, 0031
- 3200 CHINA PLA Fukien, 1230 YL talking, Chinese, poor(A.Miller)1602 YL in Chinese(Bruce-Europe)
- 3216 DOMINICAN REPUBLIC R.Libertad; 2328-0410+, LA variety mx, ads, SS amnts (Perry, Shaw, Field, A.Miller, Zilmer)
- 3220 CHINA Peking; 2312 CC, revolutionary songs(Bruce-Europe)
- 3223 INDIA AIR-Simla; 1625 EE talk, faint signal(Bruce-Europe)
- 3225 VENEZUELA R.Occidente; 2333 good to exc sig, sports, 100% copy(Shaw)
- 3227 LIBERIA ELWA, fair at 0545 w/ 16 note IS on vibraphone, \*0555 in EE, into nx(Heutte) 2210 M. in vernaculars(MCDXA - that's why I brought this out here, no ECS could chop the wood while I typed! - DF)
- 3232t CONGO Brazzaville, 2225 native rhythms, weaker than the other Africans noted 12/19, 4 kw listed. (MCDXA)
- 3235 INDIA AIR-Gauhati; 1630 lang, Indian chanting(Bruce-Europe)
- 3239 ??MOZAMBIQUE?? (that's what we'd like to think, anyway!) 2215, 19 Dec, on afternoon of remarkable opening to Africa on 90 meters, possible Portuguese, Christmas carols, 200 cycle het. (MCDXA)
- 3210 MOZAMBIQUE RCM, Lourenco Marques, EE/Afrik. talk, ID, waltz, from 2210; very strong 19 December(MCDXA)This item is out of order, sorry.
- 3240 NUMBERS SS Numbers 1006, strong, overmodulated, 5 digit groups(Kamp)
- 3245 VENEZUELA R.Libertador; 2335 excellent lvl, LA variety mx(Shaw)0130 Ray Comiff mx(Perry)
- 3255 VENEZUELA LV del Tigre; 2345 best Venezuelan on 90 meters, US pops, SS(Shaw)
- 3255 LIBERIA ELBC; 2228 t/i - 2300 t/o, pops & orchestrals, vern/EE amnts; poor & UTE QRM(Perry)2220 exc lvl, EE nx by man(MCDXA)
- 3260 NIGER ORTN, Niamey, 0530 Afr lang & mx, 0600 Nf, poor under RTT-QRM(Behr) 0533 t/i to 0600 FF amnts, Af mx, 0600 nx, 0615 ID, EE vocals, FF amnts to 0630 ID, flute mx, carrier off. Really surprised at fair reception(d'Adolf) 2130 drum & flute mx man w/FF ID 2140, then IS, anthem, off 2107(MCDXA)
- 3260t PERU OAZ4F, R.La Oroya, La Oroya; 0300-0330\* w/LA mx, TCs, ID does not sound like LV de Rio Carrizal. This one lists 400 watts, sounds like it(Heutte)
- 3275 VENEZUELA R. Mara, 0052 chanting, AA talk, into Spanish at 0100(A.Miller)
- 3280 GRENADA WBS, 0145 EE mx, ID, TC, nx 0200, US pops, s/off 0214(Whaley) 3300?(DF)
- 3290 GUYANA Action Radio; 2340 poor(Shaw)0400-0440\*, EE pops(Wallace)0415 EE mx, pops(Zilmer)0104 interview, pop songs(A.Miller)0900-1000 pop mx(Fabian) 0945 English news(MCDXA)
- 3299.8 BR.HONDURAS R.Belize; 0222-0257 interviews, then Chuck Berry records. Very poor after WBS s/off(Didine)0115 SS talk, EE ads, poor(A.Miller)English news 0500(Sparks) 0430+, EE pops, 0445 rel mx, 0500 EE ID, rel mx, national anthem, s/off 0509(Odlin)0120 pops, EE ID, TC(Perry)0230 EE talk, good (Lineback) 0432-0502\* w/pop mx, prayer, s/off amnts 0500(Kamp)Immediately after WBS s/off; poor to fair at various checks to 0 500(XXXX) 0428 EE, US pops, nx 0500, national prayer, amnts, UK national anthem, off(Whaley) Good 0300-0330 w/light mx, EE amnts(Heutte)
- 3300 GRENADA WBS, 0200 EE nx/talks to 0213\*. Also 2300 //5015(better), but both were good(XXXX)2350 local nx in EE, //5015(Duba)0100 EE ID, Elvis Presley special(Draut)0206-0222 world nx in Carib. accented EE, vocal mx, ID, sked, anthem & s/off, poor(Didine) 2340 fair w/EE YL w/ID, pops, //5015(Shaw) 0123 pop mx, talk by YL, in English(A.Miller)
- 3306 RHODESIA Gwelo; news in Af lang, com'l amnts in EE, EE nx 0400(Sparks)
- 3315 MARTINIQUE ORTF, 2345 FF, discussion by M&W, fair w/GW QRM(Duba)0120 M&W in French, poor(A.Miller) 2307 FF px w/mx, nice lvl(XXXX)
- 3316 SIERRA LEONE SLBC, 2155 big signal! Lbx type px, quite readable(MCDXA)

- 3325 GUATEMALA R.Maya de Barillas, talks in local lang & SS, fair 0205, orchestral fanfare(Perry) ID, hymn & 0300\*(Sparks)
- 3330a UNID 1500-1530 Asian mx, talk; poor(Matsaura-Japan)
- 3345 S.AFRICA SABC, 2145 EE com'l svc, carols, good lvl(MCDEXA)
- 3336 SENEGAL Ziguinchor; strong; Still 4 kw?? FF OM w/much mention of Senegal, 2150. (MCDEXA) This item out of order.
- 3346 ZAMBIA Lusaka; 0335 old pops, EE/vern amnts, fair pur, UTE QRM(Perry) Poor 0345 w/EE cmtry(Heutte) 1848 local mx(Bruce-Europe)
- 3350 GHANA R.Ghana; 2230 chorals, good(Perry) 2245 English news(Heutte)2255 group discussion in lang, excellent lvl(MCDEXA)
- 3355a DOMINICAN REPUBLIC LV de la Romana; merengues 0105 check(Perry) 0220-0240 SS, mx, TC, ID(Lohe) 2345 good lvl, but under UTE, recently reactivated(Shaw) Mx, ID, & anthem to 0330\*(Behr) (Odlin)
- 3355 NEW CALEDONIA Noumea; 0830 FF, ID, mx, //11710(9510 & 7170 unhrd recently) /
- 3355 INDIA AIR-Kurseong, 1608 EE political talk(Bruce-Europe)1230 EE ID, mx, fair lvl(Matsaura-Japan)
- 3355b BRAZIL Rdf Brasileira, under heavy RTTY QRM, lively mx & PP amnts at 0030 (Heutte)
- 3355c ECUADOR R.Cotachachi; 0445 SS, mention of Ecuador, ID not caught; NA & off 0500; prog. of LA & NX pops(Sellers)
- 3365 INDIA AIR-Delhi; 1609 EE political talk, //3355(Bruce-Europe)
- 3365 DOMINICAN REPUBLIC R. Exitos; 0000-0400, SS talk, IDs, pop mx, classical mx; often the best on the band(Wallace, Kamp, Zilmer, Duba, Field)
- 3365 UNID, 0540-0601\* w/ IS of 7 or 8 notes on piano & French horn, three short amnts in unknown language, then s/off(Heutte)
- 3374.6 UNID 2325, poor, 2 men talking, in SS, weak(Shaw)
- 3375 ANGOLA Em.Oficial, 2235 com'l svc, PP OM as host, pop mx, good(MCDEXA)
- 3400 CHINA PLA Fukien; 1547 YL in CC, fair(Bruce-Europe)1222 symphony mx, Chinese, poor(A.Miller) This item accidentally placed before the next several. Sorry.
- 3375 INDIA AIR-Gauhati; 1629 lang, Indian type chanting, weak(Bruce-Europe)
- 3380 GUATEMALA R.Chortis; 2355 fine lvl(Shaw)
- 3380 MALAWI MBC, Blantyre; 0310 w/ Af vern by M&W; tlks, some EE, DJ rattle, TCs, ads, etc; first time this season(Perry) 1840 EE amnts, pops(Bruce-Europe)
- 3380 UNID...1430 lang, Indian type mx & songs. Often hrd abt 1/2 hour earlier than other Indians on 90 meters. Still no ID(Bruce-Europe)
- 3380 UNID 1426-38 oriental lang by M&W, possibly drama. (Young)
- 3385 NEW BRITAIN R.Rabaul; 1150 fair, pidgin talks, \*\*\*\*\*  
chorals. (Perry) \* Just took a break to check \*  
3336 again. Seemingly s/off \*  
\* at 2230. The signal much \*  
\* weaker than yesterday, so \*  
\* difficult to tell, as it \*  
\* may have been lost. \*\*\*\*\*
- 3385 SRI LANKA R.Ceylon; 1630, chanting on the Sinhala Ch.l Svc. (Bruce-Europe)
- 3385t USSR RM, tentatively, at 1000; M&W; talk seems weaker than yesterday, so difficult to tell, as it may have been lost.
- 3385 VENEZUELA R. Barcelona; 2357 at good lvl with multi-IDs & gongs, ads after the hour, noticias to 0015.(Shaw) 0410 SS(Zilmer)
- 3390 ECUADOR R.Zaracay; 0400 SS, ID, nx(Draut)
- 3395 VENEZUELA R.Universidad; 0015 good, LA mx(Shaw) Man in SS, soft orchestrals, & LA choral mx at 0350, no discernible ID(Perry)
- 3396 RHODESIA RBG; 1900 English ID & EE nx, later than usual, fair(Bruce-Europe)
- 3521 GALAPAGOS LV de Galapagos, to 0402\*, orchestral mx, SS ID & Ec anthem(Behr, Perry)
- 3540 UNID 0945-1100, weak in SS, some mx, no ID hrd. (Barto)
- 3668 PORTUGUESE TIMOR Dili; 1414-1502, nice copy, little CW QRM, PP amnts, with variety mx, some American. Al Hirt at 1458; gongs 1437 & 1459, ID 1500, s/off amnts, NA to 1502, off. (Young) 1200-1500\* w/ PP, light mx, cl mx, nx, s/off is apparently 1500 every day, w/ID, PP, NA (Matsaura-Japan) Consistently from around 1030; much better than old 3268. (Padula-Australia) 1125 weak bits of mx hrd; ever increasing readability from 1200, gone by 1245. My 197th country! (XXXX) mx 1335, weak & fading, but kept traces of the carrier till shortly before 1400. (MCDEXA)
- 3883 CAPE VERDE ISLANDS Radio Clube de Cabo Verde; 2200 PP by man, pop & soul mx; thru AROS(XXXX) 2325 PP, instr mx, 2330\*(Duba) Hrd booming in 0830-0845 r/c on only average day. Probably extended sked. (Hoogerheide)

- 3900 CHINA PLA Fukien; 1547 M&W in CC, good(Bruce-Europe)  
 3905 INDIA AIR-Delhi | 1542 lang, chanting(Bruce-Europe)  
 3925 INDIA AIR-Delhi; 1530 English news, good(Bruce-Europe)  
 3925 JAPAN NSB, from 0820 t/1 in JJ w/mx; over New Guinea: 0900 w/4 pips, but no ID(Odlin)  
 3940 PAKISTAN R.Pakistan; 1600 English news to 1615, good(Bruce-Europe)  
 3945 NEW HEBRIDES R.Vila; 0810-0906\* FF talk, s/off w/ID, tam-tams(Matsuura)  
 3952 ENGLAND BBC good in English 0620(Perry)  
 3960 W.GERMANY RFB in Polish, M&W in dialogue, good 0545(Perry)  
 3970 W.GERMANY RFE, think Hungarian, fair to good 0545(Perry)  
 3975 ENGLAND BBC in Arabic w/chanting, fairly good 0400(Hoogerheide) (Berghammer),  
 3980 S.AFRICA R. RSA; 2000-2050 Port to Afr, //11900, 11970, 15155, 15175  
 3985 SWITZERLAND SBC, \*0600, RF since 5 Nov, //6165, 9535(Berghammer)  
 3985 ECUADOR Escuelas Radiofonicas Populares; 0345, mx px(Field)  
 3986 NIGERIA NBC, \*\*, excellent 0540 over hams, man in Afr lang talks(Perry)  
 4030 RSFSR(As) Anadyr, fair w/HS drama 0811(SK)  
 4038 UNIDENT 0140-0233, AA chants, M & W w/RR at 0145. Gone by 0233. (Young)  
 4485 RSFSR(Eu) R. Moscow, Classx mx and RR at 1230. Good lvl. (Zilmer)  
 4500 AUSTRALIA VNG time standard stx. Vox amrt at 1230. All EE. (Zilmer)  
 4500 CHINA Urunchi; All CC and revolutionary mx at 1555. (Bruce-Eu)  
 4627 SP. SAHARA R. Sahara well hrd 2130-2201\*. Time checks and ID fol by short march and anthem. If this was a ute, then so was 7,230. (Heutte) Word received from participating Villa Cisneros station (AM) says this indeed a ute relaying px mat'l from both Villa Cisneros and Aaiun AM outlets. The 7,230 SWBC outlet from Aaiun not heard recently - may be off the air. (Ed.)  
 4679 ECUADOR R. Nacl Espejo; 0206-0355. M&W annrs w/ lots ads. P. (Dildine)(Zilmer)  
 4680 ECUADOR R. Nacl Espejo; 0045-0603. Latin mx, ads, drama, Andean mx. (Sparks) (Field, Miller, Lineback, Heutte, Patterson)  
 4700 BOLIVIA R. San Miguel. 0024-0311. Local mx, TG, ID, vocal mx. (Hauser)  
 4730V AZAD KASHMIR A.Z. Radio, Muzafarabad. 1215-1521\*. Indian chants. Hrd w/ Pakistan ID at 1400. Strong on WCNA, weak on ECNA. Rpts vary fgy 4728-4731. (Young, Perry, MCDXA)  
 4738 UNIDENT. 1108-1421. Seems oriental, perhaps CC. YL voice. Mx at 1130. Weakening at 1420. (Young)  
 4740 UNIDENT. 1230-1330. Seeming VV talk and SEA-type mx. (Matsuura)  
 4750 UNIDENT. Thought maybe Dom. Rep. Hrd 2315-0200+ w/much mx. ID unintelligible. Mx unlike that of Ecuadorian below. (Field)  
 4750 ECUADOR R. El Mundo. Sports and ID hrd 0230-0250. (Field)  
 4754.8 COLOMBIA Em. Nueva Mundo. 0213-0216. M annr. P. (Dildine)(MCDXA)  
 4755 COLOMBIA Em. Nueva Mundo. Hrd variously 0040-0635. W Annr, Latin mx, CARACOL network annrs, pop mx and noticias. (Lineback, Patterson, Heutte, Field, Sparks, Kolb)  
 4756V BRAZIL Rdif. do Maranhao. Fq varies 4755-4757. Hrd 2230-0300 s/off. M PF annr. (Sparks, Dildine, Heutte, Field, MCDXA)  
 4760 VENEZUELA R. Frontera. 0045-0232. Latin mx, M annr, ads and prices, sport events. (Dildine, Field)  
 4765 BRAZIL R. Sociedad de Feira Santana. Hrd 2326-2355. Lots of cmmls. Mx px. Annr gave QTH as "Estado Bahia" (Schnabel, Field)  
 4765 ECUADOR CRE Guayaquil. Hrd 2340 and 0300-0355. Sports, mx. F-G. // noted on 4,910 at 0325. (Field, Lineback, Sparks, Heutte)  
 4765 CONGO R-TV Congolaise. As early as 1720 in Europe. 2115, and 0615 in US. All FF annrs with Af. rhythms. (Bruce-Eu, Munger, Field, MCDXA)  
 4765.5 UNIDENT. 0234-0256. Remote Futebol coverage in SS w/"R. CADENA Nac'l" IDs, live and taped ads. F. (Dildine)  
 4770 LIBERIA ELWA, poor w/ EE mx 0700-0710(BBC?), then lcl mx(Perry)2140 drama (Field) 0602-0650+ EE, BBC mx, Liberian mx(Wallace) 0708 BBC mx, Christmas mx, covered 0800(J.Kolb)0645-0720 EE, BBC mx, Christmas mx(Sykes)  
 4772 VENEZUELA R.Bolivar; 2250-0400+ in SS w/ IDs, pops, sports, etc. Some say 4772, some say 4770. (Lineback, Heutte, Dildine, Field, Daba, Sparks, Sellers)  
 4772 ECUADOR R. Cemit; 0400-0430a close; SS, orchestral, Andean tunes, often at nice level. (Perry)

- 4774 DOMINICAN REPUBLIC Onda Musical; 2235-0250+; ads, election amnts., EE language lesson(at 2330), pop mx, IDs, mx requests. (Heutte, Lineback, Sparks, Sellers, Duba, Field) \*\*\*\*\*  
 \* We took time out from typing  
 \* this section to drag up some  
 \* chanting from Zanzibar on  
 \* 3339 kHz, at 0334 tune, still  
 \* weak, but there. How to QSL??  
 \* The experts haven't found a  
 \* way, anyone still trying?  
 \*\*\*\*\*
- 4775 AFGHANISTAN Kabul; at very decent lvl 1328, mid-Asian chant, quick amnts by man; noted as early as 1310. (Perry)
- 4777 GABON Libreville; 2000 FF, native mx, talks by man; f/i abt 1945-2000 here(Sellers) Xylo-type instrument, \*0431 by M. in FF w/ ID(Perry) 2225 FF mx, YL w/ ID 2302, s/off w/ anthem(Nikolich)2240 mx, 2300\*(Field) 0500-0530 FF talk, ID 0515, very good(Munger)0555 UNID, tentative Gabon, EE pop mx, 0604 march mx, FF talk 0608, poor(J.Kolb)
- 4778 ECUADOR R. Nacional Progreso, Loja; 0425-0436\*; formerly abt 4730; Ecuadorian guitar mx, final ID & s/off(Sparks)
- 4780 USSR 60 meter band survey lists Petrozavodsk, WRTH lists Moscow. At any rate, excellent level 0509 tune, M&W in RR mx(Dexter)
- 4780 AFAR & ISSAS Djibouti; 1535 Arabic news, 1600 IS musical theme, lost 1606 (Martin-Europe)
- 4780 VENEZUELA LV de Carabobo; 2348-0335+; pops, IDs, sports, TCs. (Sparks, Field, Heutte, Martin-Europe)
- 4780 USSR Petrozavodsk; weak YL in RR 0520, poor(Perry) 0830 fade-out of the Home Service(Berghammer)
- 4783 MALI R.Mali; 2155, tentative, man talking(Field)2233 M&W in FF(Heutte) Now moved to 4786 $\frac{2}{3}$ v(DF)
- 4785 PERU R.Atlantida; 0040-0450\*, IDs, LA mx, pop dance mx, TCs, etc(Heutte, A.Miller, Sparks, Lineback, Lohe, Field)
- 4786.7vNF MALI R.Mali; 0700 w/AFR dialects(Berghammer) Man in FF 0705 fading; news and talks(Perry) Tent. 2105 (MCDXA)
- 4795 BRAZIL R. Congonhas; 2245 w/nx. (Field)
- 4795 BRAZIL R. Tabajara hrd at 0023 w/TC, mention Paraiba. Man singing. (Heutte)
- 4795v ECUADOR LV de los Caras; 0317-0500. Folk mx, many IDs, fq amnts. (Sparks, Lineback, Field, Heutte)
- 4795 CONGO R. Brazzaville. Presumed the one under RTTY in FF 0637. (Kamp)
- 4797v BOLIVIA R. Nuevo America; Varies 4795-8. Best hrd 0400-0500\*. Nx panorama px, pop songs, coml sce. (Sparks, Perry, Heutte, Field)
- 4800 CHINA. Unlisted WRTH. YL harangues up til 1350. G. (Perry)
- 4800 VENEZUELA R. Lera; Latin rhythms 0000-0400+\* Hvy QRM de RTTY most times. (Heutte, Field, Sparks, Lineback, Carlsen, Miller)
- 4805 BRAZIL R. Amazonas; Nx at 2255. (Field)
- 4806 BRAZIL R. Amazonas; PP nx, ID, Pop mx. 0315-0330. (Sparks)
- 4807 REUNION (T) ORTF St. Denis. FF & mx, 1320-1515 f/o. No ID hrd. G lvl. (Young)
- 4807 ECUADOR R. Popular Independiente. Andean mx. 0000-0532. G-P. (Shaw, Field, Lineback, Kolb, Sparks, Heutte,)
- 4810 VENEZUELA R. Popular; 0000-0430. Generally Good. Many ID's, TC. (Heutte, Martin, Odlin, Sparks, Nikolich, Field, Lineback, Trkula)
- 4815 UPPER VOLTA, Ouagadougou; til 2301\* & 0623-0700. Chants, M w/FF & Vernacular, ID on the hour. (MCDXA, Berghammer, Field, Perry)
- 4815 PAKISTAN (T) Quetta; OM in lingo 1423, subcontinental mx, weak. (Perry)
- 4820 GAMBIA R.Gambia; s/on 0625, EE 0630; songs, talk; EE and lang, past 0700. (Wallace, Kamp, Barto, Draut) (Hoogerheide)
- 4820 ECUADOR R.Paz y Bien; 0920 many IDs(Schnabel) 0900-0930.Mx for Bu listeners
- 4820 HONDURAS HRVZ; English 0300-0430\*(Field, Sparks, Lineback, Carlsen)
- 4824 ECUADOR Luz y Vida; 0530 Ec mx, YL ancr, past 0800(Behr) 0605-0630\* Ec folk mx, YL ancr, final s/off(Sparks)0245 Ec mx, no DR(Field) 0430 to s/off which varies 0628-0650 w/no ID, but IDs earlier(Odlin)
- 4825 DOMINICAN REPUBLIC LV de le Fuerzas Armadas; ID 2204(Field)2205 cl mx, few amnts(Duba)0030 SS, ID 0045 w/ QTH(Martin-Bu)0035 LA mx(Heutte)
- 4830t USSR regional. 2145-2200 lang, CC/Asian, by man(Barto)
- 4832 COSTA RICA R.Capital; 2200-0530+, LA rhythms, IDs, ads, sports(Shaw, Sellers, Lineback, Sparks, Martin-Bu, Duba, Dildino, Munger, Carlsen, J.Kolb, Field, Heutte)

- 4835 GUATEMALA new stn, believe ID is TGAB, site is Coban Alta Verapaz. 18 Nov w/ mx px, ID during px, off abruptly 0000. TGAB is an AM (1090 kHz) outlet. (Field)
- 4835 SARAWAK RMS, Kuching, fair w/mx 1352, fading(Perry)
- 4839 CELEBES & MOLUCCAS RRI-Ambon, excellent 1325-1402\* daily. Chorals, R&R, oldies, etc. If the sleepy Hawaiian guitar instrumental at close is the Indonesian anthem, it's a very nice one! Doesn't sound like typical military, etc.(Perry) 1310 M&W w/Indon & pop mx; apparent lcl anmts(XXXX)
- 4839 ZAIRE Bukavu, s/on 0400, 20 Nov. On 17 Nov w/ mx px 0440(Field)
- 4839 BRAZIL R.Roraima at 2230; good w/cl mx, echoing ID(Heutte)2300, no ID(Field)
- 4840 VENEZUELA R.Valera; 2310 ID, mix Brazilian(Field) 0330 mx, fanfare, ID(Heutte) 0350 pop songs, ID(Sparks)
- 4845 BOISIANA R.Botswana; s/on 0400, mx & nx(maybe)(Field) \*0400 EE & lang anmts, faded by 0444(Perry)
- 4845 BRAZIL R.Teresina; speech 0145(Field)
- 4845 BOLIVIA R.Fides, mx, 0000; ID at end, then mx(Field) 0017-0050 R&R mx, ID (Sparks)
- 4845 UNID 2200 man in AA or similar language, mx to sign off at 2225; one time only. Fits schedule of Mauritania, but didn't check that time to see if they were on 4850. (Field) Mauritania has been wandering the band a bit lately(DP)
- 4848 USSR(Tentative) 1214-1230 in RR(?), folk mx & TS in RR(?) (Barto)
- 4850 MAURITANIA RTW; 2235 mx in AA, fairly strong(AEM) FF nx 2240-2248(Bruce-Eu) 2215 AA, long talk by man; s/off 2300v(Duba) stringed instrument IS 0700, then ID by man, anmts, into chants(Perry) AA chants 2250(XXXX) 2213-2230 M. in FF, Af mx, chanting, ID, anthem, s/off(Daldine) 2230\*(Field) 0700 FF; s/on, mx (Draut,Nikolich) Mauritanian guitar mx, Af singing, FF nx 0730(Sparks)
- 4852 MOZAMBIQUE RCM 1900 PP, EE pops, 4 note jingle 1900(Martin-Eu)
- 4855 MOZAMBIQUE RCM; anthem, gongs & PP ID by woman 0400(Dexter)
- 4855 UNID unknown lang, mx from 2215 & 2150; gone 2230(Field)
- 4860 VENEZUELA R.Maracaibo; 2230-0400\*, ads, pop mx, IDs, net IDs, SS talk. Lineback, Field, Duba, Heutte, Martin-Eu, Wallace, Carlsen)
- 4860 UNID 0420 man talking to 0425; also 0430-0434 thru noise after IV s/off. Language unknown. (Field)
- 4864 EBUDEI Berakas, very weak, man in lang 1330 past 1400(Perry)
- 4864,8 BRAZIL RC do Par ; 0230-0400\* PF ads, songs, IDs, speech(Field, Heutte, Sparks)ID, mx 0848(J.Kolb)
- 4865 UNID 0725 LA mx, weak(Lineback)
- 4865 AZORES Ponta Delgada; 2150 mx px, ID 2208(Field)2220-2305 PP, cl mx; gong ID, rel px 2300(Lohe)
- 4867 COLOMBIA LV del Cinaruco; 0150-0510+; speech, news, CARACOL spots, IDs, light mx, ads. (Dexter, Sparks, Field, Heutte) 0400\* (Kamp) 0500 past 0700 w/nx, IDs, mx. (Behr, Miller) Presume it operates late on weekends, tho also at times during midweek. (DF)
- 4870 ECUADOR R.Rio Amazonas, carrier on 1042, marimba mx 1043, hymn or anthem by choral group, then guitar version. Talk 1050-1101, mentions of "Amazonas"; fair to good lvl(Dexter)
- 4870 UNID man in SS, mx briefly at times, ID included "la voz de diciembre" or "noviembre" at 1115, out by 1145(Field)
- 4870 DAHOMEY Cotonou; 2155 mx px, some EE selections; 2219\*(Field)2202 FF, mx (Nikolich) Tentative, M&W in FF, W.Afr. pops 2145; YL in FF ID, but not understood at 2200, off 2205(Perry)
- 4870 VENEZUELA R.Tropical 0300 musical px(Field)
- 4871 W.IRIAN RRI-Sorong; good daily, Indon anmts, pops, close 1400 daily(Perry)
- 4875 BOLIVIA R. Cruz del Sur; 0120 rel px, ID 0300(Field) 0300-0307 pop songs, ID in SS & EE at s/off 0307(Sparks)
- 4875 BRAZIL R.Jornal do Brasil; 2243 w/emtry & chatter in PP; fair(Heutte)
- 4875 S.AFRICA SABC, Afrikaans tlk 0405, very good(Perry) Field)
- 4880 ZAIRE Kinshasa at surprisingly good level 2155 tune, Afr chant, FF ID by man 2200, then mx in FF/vernaculars(Perry) Nightly, as early as 2145 with Afr music(Field)
- 4881+ DOMINICAN REPUBLIC R.Comercial; 0030-0545+; SS, LA mx, IDs, pop dance mx, ads.(J.Kolb, Lineback, Heutte, E.Shaw, Sparks, Field)

- 4884 COLOMBIA Ondas del Meta; pop songs, ID(Sparks) 4885, 2300-0000 SS mx, TC, ID, TODELAR ID(Lohe) News 2310(Field)
- 4885 SUMATRA RRI-Bukittinggi; poor/fair 1225, YL w/Indonesian anmts. (Perry)
- 4885t USSR //4815 at 1233(Field)
- 4885 UNID 0645-0700\*, continuous mx, off 0700, missed ID(Lineback)
- 4888 BRAZIL R.Clube de Teresina; f/i 2247 w/Christmas mx, ID(Heutte) 2205 mx of Voz do Brasil(Field)
- 4890 HONDURAS HRVL, R. Lux; 0215 Mexican music, many IDs, QRW(Behr)
- 4890 VENEZUELA Rdif Venezuela; 1116+ w/SS talk over ABC(J.Kolb) 0250-0403\* w/mx, IDs, anthem prior to s/off(Field, Sparks, Lineback)
- 4890 SENEGAL Dakar; good \*0600 lately on WCNA(Kamp) FF 2255(Field)1950 FF, nx in FF at 2205(Martin-Eu)
- 4890 PAPUA ABC, Port Moresby; 0800-1300+ EE, nx, talk pgms, ABC & local nx, old EE pops, sports. (Fabian, XXXX, Field, J.Kolb)
- 4891t MOZAMBIQUE RCM Beira; from 0408 tune w/YV just having signed off. Seeming FP, mx. Weak & summer-like QRN. Same date as RCM-4855(Dexter)
- 4895 BRAZIL R.Baré; sports 0206(Field)
- 4895t INDIA AIR-Kurseong; tentatively the very weak one here fading in 1415 on day when 60 meters open late; gone 1430, when whole band died. Tabla & sitar ragas. (Perry)
- 4895 UNID, probably Martinique with extended sked, in FF; mx px from 0345(Field)
- 4895 SARAWAK RMS; fair but splash from 4890, MOR mx 1320, Asian selections(Perry)
- 4895 Assume Ashkhabad, USSR; HS, US pops w/oriental flavor; 1230-1300; thot I had Sarawak till IS & 6 time pips. Then into RR or Turkmen news px(Hoogerheide)

\*\*\*\*\*  
 Though some will already have this map showing the antenna coverage of the Voice of TURKEY, others will not have it. Thanks to Bill Paschke for providing it....These maps help in checking paths into nearby areas, also; something very useful.



- 3270 ESPIONAGE 5-digit numbers by man in SS at 1030. (Hauser)
- 3300 BRITISH HONDURAS R Belize good 0117 with national mx (Hauser)
- 3520 GALAPAGOS LV de Galapagos fair to good depending on ham CW QRM; amts and mx and ID 0304 with theme mx, benediction 0355, full ID ancing this freq. only, then 0402\*. TCs are in CST (Hauser)
- 4832 COSTA RICA R Capital with 'Costa Rica y Su Artistas' 0507-0525, then s/off amts asking for reports, plugging RGN, ancing 1125, 4832, 103.5, to 0530\* but no NA (Hauser) MW often audible evenings EST here; Glenn's report above forwarded to me through inevitable snafu in new system. FH
- 4905 CHAD Fort Lamy fairly good with AA nx and balafon mx 2120 (Martin)
- 4905 COLOMBIA Em Atlantico strong and fair clarity 0012, freq., time checks and IDs (Mastin)
- 4914t MANGHURIA Man and woman CC ancrs at 1310 tune, short music segments (Dexter)
- 4915 BRASIL Rdif de Macapa from 0846 tune, variety of music, 'Macapa' (Dexter)
- 4915 COLOMBIA R Guatapurí poor 0200-0450 with SS drama, IA mx, IDs (Heutte, Lineback, Trkula)
- 4915 GHANA Accra good with lang. mx and talk 2133 (Nikolich) 0530-0600 with EE or lang. and mx, EE ID 0600 (Eichenhorn-CI, Patterson)
- 4920 AUSTRALIA Brisbane 0835-1248 with racing, mx, commentaries, and ABC nx 0900 and 1100, generally good (Fabian, Kamp, Miller, Nikolich)
- 4923 ECUADOR R Quito fair 0139-0210 with political harangue, band sd, IA mx and IDs (Miller, Schnabel)
- 4923v UNID 0230-0240 fade, weak ID La Voz de 'Mac-we-dah?', poor (Lineback) Brasil?
- 4929.9 DOMINICAN REP R Mil 0518-0531 with Xmas IA mx, TC, ID, good (Dildine)
- 4930 ECUADOR R de la Casa de la Cultura, super-exc 2325-0330 with SS talk, IDs, R Nederland transcription pgm 0300, classicals (Carlsen, Heutte, Lineback)
- 4936 PERU R Tropical, guitar mx, Andean selections, full ID 0354 (Perry)
- 4940 ECUADOR R Nac del Ecuador exc 0115-0503\* with light classical and Andean mx (Heutte, Trkula) strong 1132 pips and ID, Ecuadorian tunes (Perry)
- 4940 IVORY COAST Abidjan fair in FF 0618 18 Nov, good African night (Kamp)
- 4940 USSR Radiostancia Rodina, presume Kiev, 0517-0540, woman in RR and light mx, IS 0530 and ID, short amts, back in mx 0535, good (Dexter, Heutte)
- 4940 USSR Yakutsk good with YL in RR 0807; if this in wall WCNA around 0630, RR on 5015 likely Vladivostok, not Arkhangel'sk (Kamp)
- 4940 VENEZUELA R Yaracuy 2200-0300 with news, mx, IDs, gongs, chimes between each nx item; poor to exc (Heutte, Lineback, Martin) \*0857 with time pips & SS s/on with full ID, very good (XXXX)
- 4945 COLOMBIA R Colosal fair-good 0300-0645 with IA pops, SS amts and mx, IDs (Dorfman, Heutte, Lineback, McCall)
- 4950 SARAWAK RMS poor-fair with talk by man in EE 1315 (Perry)
- 4955 COLOMBIA R Nac exc #2330-0303 with talks, mx, time checks and IDs (Duba, Heutte, Lineback, Nikolich)
- 4960 VENEZUELA R Sucre with musical pgm and Rumbos net ID 0300 (Field)
- 4965 COLOMBIA R Santa Fe 0117-0635 poor to good with SS amts, mx, classical guitar (Carlsen, Dildine, Dorfman, Lineback, Trkula)
- 4965 ZAMBIA Lusaka 0600-0625 EE nx, ID: Zambian R, Zambia; into vernacular at 0615; seems stranger than list 2 1/2 kW (Wallace) Sure it's not South Africa?
- 4970t SABAH Unid weak Asian here 1315, no ID, exotic mx and lingo (Perry)
- 4970 VENEZUELA R Rumbos with sports, talks, many IDs, nx, IA mx and ads; signal gets better after 0100 (Carlsen, Dildine, Heutte, Lineback)
- 4972v FRENCH GUIANA CRTF Cayenne with FF variety pgm 1000 (Berghammer)
- 4972.5 CAMEROUN R Yaounde fair 1vl 2115, African chorals, meat grinder QRM, hi (Perry) Howja guess—they really do use a meat grinder, hi! FH
- 4975 BRASIL R Timbira with fair strength but RTTY; PP amt, mx, ID 0300 (Heutte)
- 4980 GHANA Ejura putting in good sigs around 0600 regularly here (Kamp)
- 4980 VENEZUELA Ecos del Torbes 2323-0250 fair to exc; IA mx, TCs, IDs, sports, 'Linda San Cristobal' (Carlsen) Dildine, Heutte, Lineback)
- 4985 Unid 0440-0518 fade out; talk by woman in lang, not SS; possibly PP or FF; pops; played 'Je t'aime' (Gainsburg-Birdin version), guess that rules out R Ecclesia; TC and garbled ID 0500, more talks, pops; seems African (Heutte)

- 4990 VENEZUELA R Barquisimeto at 2350-0330 with talk, US and LA rockenroll, IDs, ecology PSA, good to exc (Carlsen, Dildine, Hafer, Heutte, Lineback)
- 4994 BRASIL R Brasil Central fair to good 2222-0130 with sports, talks by man and woman (Heutte, Nikolich, Schnabel)
- 4995 PERU R Andina fair 0415-0500 with musica Huanca and ID (Heutte, Schnabel)
- 4995 Unid 0425 with mx, very weak (Lineback) Probably Andina, CM. FH
- 4996 USSR Novosibirsk time signals fair 1736 (Bruce-Eu) 0110 (Young)
- 5000v NEPAL Kathmandu 1150-1520 with lang and mx, WWV QRM (Barto, Martin-Eu) Nx in EE 1400, clear ID 1400 fair under carrier of MSF (Bruce-Eu)
- 5000.0 Unid time stn 2305-2325 hrd once with time on CW over and over; long dash on mtime; poor under WWV, doesn't match any known sked (Dildine)
- 5005 PERU R Jaen at 0300; one of those flukes: WWV not splashing all over; ID and s/off amnts, quena bamboo flute solo IS, 0300\* (Schnabel)
- 5010 CAMEROON R Garoua at 2110 with repetitive chants, NA and 2200\*, QRM (Martin-Eu)
- 5010 DOMINICAN REP R Cristal at 0015-0041 with full ID each half hour, vocal mx, talks, ads, etc.; good to exc (Carlsen, Dildine, Duba, Heutte, Lineback, Martin-Eu, Nikolich, Trkula)
- 5015 BOLIVIA R Universo in the mud at 0300 with SS ID and mx (Heutte)
- 5015 USSR Arkhangelsk 0515 with RR talks by a woman, poor; cf 4940 (Perry)
- 5015 USSR Vladivostok 1150-1210 daily in RR with classical mx, 1200 mx (Barto)
- 5015 WINDWARD IS R Grenada fair to good with BBC talk show relay 2255, mx, amnts, 2325 local mx with woman; dual 3300 (Dildine, Duba, Heutte, Lineback, XXXX)
- 5015 Unid 1405-1420 RR? with pop mx, weak (Lineback) Likely Vladivostok, CM. FH
- 5019 COLOMBIA Transmisora Cladas at 0055, LA mx but poor with hets (Heutte)
- 5020v VENEZUELA R Nacional, long inactive, mx, amnts, ID 0100 by a woman; very overmodulated; does this one have a regular sked here? (Heutte)
- 5020 Unid 0025-0030 SS, talk, unreadable, two very weak stations (Lineback) One is R Nac and the other Transmisora Cladas, but which is which...FH
- 5020.3 COLOMBIA Transmisora Caldas at 2251 with very slow SS talk and ID (Dildine)
- 5026 UGANDA Kampala fair-good with some RTTY 2030-2104\* 15 Dec, pgm in vernacular with talk by woman, brief music interludes, ID 2100 and EE nx (Heutte) t Kampala twice noted late Nov \*0300, Afr. mx and EE or vernacular talks, fair by 0325 but then quick fade (Perry)
- 5030 VENEZUELA R Continente at 0000-0400; anywhere from poor to exc; mx, TCs, IDs, talks, sports (Carlsen, Dildine, Heutte, Lineback, Martin-Eu)
- 5030 CENTRAL AFRICAN REP Bangui very good in FF at 2040 with clear ID and Afr mx, usually fine (Duba) and \*0530 after ID with nx, very good (Heutte)
- 5039 SUDAN Omdurman at 0515 in AA with chants and local mx, poor (Wallace)
- 5040 BURMA BES Rangoon fair at 1130-1317 with mx, nx in Burmese (Barto, Perry)
- 5041 PORT GUINEA Emissora Oficial loud at 2220 with talk and mx (Nikolich) and good at 0710 with African chorals and chant (Perry)
- 5042 PERU R Libertad de --- OAX2K, 2300-0536, all Andean mx, 0445\* one night; ID possibly R Universal, mentioned La Oroya (Behr, Dexter, Perry)
- 5045 BRASIL R Mundial, Rio de Janeiro, 0030-0200\* with pop mx, woman DJ, infrequent nx and ads; new slogan for one of three Rio stns listed (Heutte)
- 5045 Unid 0010-0015 SS, LA mx, unreadable (Lineback) LV del Altiplano?
- 5047 INDONESIA RRI-Jogjakarta, woman in Indon, poor at 1315 tune (Perry)
- 5047 TOGO Lome 1930-2300\* fair-exc with Afr. mx; EE talk 2030, usually all FF (Duba, Heutte, Nikolich, XXXX) 0540-0545 Afr. mx with male anc (Dildine) \*0600 exc nitely here (Kamp)
- 5050 VENEZUELA R Mundial at 2235-0310 with LA vocals, TCs, IDs, ads, cmtrys, poor to exc (Dildine, Heutte, Lineback, Trkula)
- 5055 BRASIL R Vitoria fair with cmtry by a man, RTTY & NST QRM, ID 2310 (Heutte)
- 5055 Unid LA to 0353\* with gongs; weak to fair, not sure if SS or PP (Dexter)
- 5062.5 ALBANIA R Tirana HS good to exc with local mx 0430-0550 (Heutte, Perry)
- 5075 COLOMBIA R Sutstanzna exc but overmodulated; not dual 5095; 2330-0401 with LA mx, Mass in SS, IDs, cmtrys (Carlsen, Dildine, Fabian, Heutte, Lineback, Mungler) three SS IDs in a row at 0900 (XXXX)
- 5084 INDONESIA RRI-Medan poor with CW QRM, man singing at 1540 (Martin-Eu)
- 5095 COLOMBIA R Sutstanzna 0010-0030 with classical mx, math lesson in SS with YL teacher, orchestral mx between problems, ID, fair to good (Dildine, Heutte)

- 5145 CHINE RP at 1245 in Mongolian (Bruce-Eu)  
 5273 PARAGUAY R Mac fair at 2250 with SS talk by man (Heutte)  
 5310a CUBA R Rebelde (9x590) 0750 SS talk, ID: LV de Cuba, fair (Wallace)  
 5400 MEXICO XEZX, Ciudad Camargo Tams, still audible daytime, 1845 with SS ads, military SSB QRM;(4x1350) (Hauser)  
 5560 INDONESIA RRI? in Indon nx 1200, fair (Barto) QTH still unknown. FH  
 5805 YEMEN Samaa at 1917 with AA chants (Bruce-Eu)  
 5837 Unid seems Indonesian; South Sea & guitar mx 1350, but hvy RTTY (Young)  
 5845 INDONESIA RRI? same format as 5560 but not dual, 1155-1211, good (Barto)  
 5875 HONDURAS LV de Honduras at 0100-0415, poor to fair with sports, promotes a CBC network in Nicaragua, Guatemala and Costa Rica; apparently all Honduras stns were in parallel during coup 4 Dec (Eichenhorn, Kamp, Linsback)  
 5900 CHINA Fukien Front fair to good with talks by CG man and woman 1155 (Perry)  
 5905 USSR Site/pgm? MCR and classical instrumentals 0025, fair (Perry)  
 5920 USSR Minsk, RM at 2120, possibly EE xmsn; another day 2145 in EE, question and answer pgm, very good (Perry)  
 5930 CZECHOSLOVANIA R Prague fair-food at 0120 with TL ancr, mx, EE (Eichenhorn)  
 5935 USSR Majak daily 0300 past 0330, exc in RR, now if only they'd QSL... (Perry)  
 5935 USSR Two stns at 0600, chime IS, 6 pips, simultaneous IDs by man and woman, then one with mx and other with TL talk; weakly (Shaw)  
 5935 USSR RM Indonesian svc, mentioning Dempesser, etc. in nx 1135, fair (Perry). Anyone have a definite sked for this frequency? Must be at least two here...  
 5940NF NICARAGUA Rdf Nacional at 2200-0300 and 1230-1300, mx, SS amnts, baseball usually at 0000; RTTY on freq., ex-11875 (Behr, Hauser, Perry)  
 5950 USSR Majak with non-stop orchestral to 0530 IS, TL in RR, man with nx 0600, into up-tempo jazz 0610 (Perry, Shaw)  
 5955NF FRANCE CRTF at 0830, FF HS dual 6175 at al., IPU list 0800-2000 (Berghammer)  
 5955f NICARAGUA R Zelaya exc at 0330 with SS baseball (Jeffrey)  
 5955f SOUTH AFRICA Springbok R, exc 0530-0555 with EE pops, Fanta soft drink ads, soul mx, EE DJ (Perry) Lists 100 kW! FH  
 5960 CANADA RCI 0320 EE Northern Service, nx and mx, good (Jeffrey)  
 5960 MEXICO XEUMT, R Universidad Iberoamerica, Sisogulchi Chih, full ID by woman 1739, soft mx, into lessons, near nominal frequency now (Hauser)  
 5965 BRASIL R Guaiba, fair with man ancing in PP 0240 (Perry)  
 5970 CANADA RCI 0830 EE to South Pacific exc, nx and mx (Jeffrey)  
 5970 PERU R El Sol exc 1153 with Andean tunes, Indian and SS amnts (Perry)  
 5975NF CANADA RCI EE to Europe 0715-0745 dual 9655; QC ex 5980 (Berghammer)  
 5975 CHINA RP KK svc good with Chinese folk songs 1105 (Perry)  
 5980 EL SALVADOR R Nac, ISS, 0220-0230 with mx, nx by a man, weak and QRM (Duba, Eichenhorn) SS with marimba mx 1156-1230, fine lvl (Patterson, Perry)  
 5980 ROMANIA R Bucharest EE at 2132, new for 49 meter survey (Perry)  
 5981 PERU R Panamericana at 1150, fair with SS, Andean tunes (Perry)  
 5985 GERMAN FEDERAL REP RFE-Munich poor 2300, Hungarian ID per WRTVH (Eichenhorn)  
 5985 JAPAN NHK GOS with EE nx 1200, JJ mx 1210 (Barto) cf. 5990  
 5985 NEW GUINEA R Rebalu poor at 1303 with 'Sweet Lillani', other mx, EE (Miller)  
 5985 TANZANIA RT Dar-es-Salaam, 0258 IS, \*0300 with Swahili Idchants, fair (Perry)  
 5987 INDONESIA RRI-Menado exc at 1410 with 'Love is Blue', other pops and MCR mx, Indon talks (Perry)  
 5987 ROMANIA R Bucharest at 0205 Nov 30, way off freq. with TL ID, EE, very poor, (Eichenhorn)  
 5990 CANADA RCI 2300 EE To NA and SA, Caribbean, nx, mx (Jeffrey)  
 5990 JAPAN NHK GOS, EE 1200 & JJ 1215 with ID, nx by a man, fair, RTTY (Patterson) 1700 EE GOS, fair some days (Behr) cf. 5985  
 5995 AUSTRALIA RA Lyndhurst, 10 kW, at 1130 with news and stock market, fair to good (Eichenhorn, Trkula)  
 5995RF PORTUGAL DW-Sines ex-6010, dual 7275 9620, Serbo-Croatian 2245-2345 (Berghammer)  
 5995 VATICAN VR good with Pope Paul 0050 in EE (Eichenhorn)  
 5995 Unid at 2232-2300, US rock and Hindi mx, man ancr in FF; probably Martinique because of music types (Dildine) Mall also here this time; only ID can tell.  
 5998v ALGERIA TRVA at 2100-2215 with AA Chants dual 6080, fair (Behr, Ronda)

- 6000 BRASIL R Inconfidencia with PP 0145, 'Comparsita', tangos, ID (Trkula)
- 6000v SAUDI ARABIA Riyadh at 2310 with talk by man in AA, hbts (Duba)
- 6005 GERMAN FEDERAL REP RIAS-Munich 0655 GG with pops; BBC weak (Foster-Pac)
- 6006 COSTA RICA R Relej 0245-0305 good with LA mx, 'servicio publico' (Lohe)  
1149-1206 very good with ads, LA mx, ID (Patterson)
- 6010NF USSR RM HS now hrd as late as 0945 via polar path (Berghammer)
- 6010 THAILAND Thai TV Co., with man in Thai 1310, well modulated and heard two  
in a row (Shaw)
- 6015NF CZECHOSLOVAKIA RP at 1715 with GG to Austria, ex-6055 (Padula-Pac)
- 6020 MEXICO El Eco de Sotavento, XEUV, at 1220-1254, all SS with TCs, ads, wx,  
Mexican mx, man ancr; fair; 250 watts, not 2 1/2 kW (Patterson)
- 6020 PERU R Victoria good with mx, ID 0505 (Dexter)
- 6025 MALAYSIA RM-Kajang, EE and unid lang. with nx and Far East mx, 1203-1220,  
fair (Patterson)
- 6025 PORTUGAL RP at 0202 in EE, cmtry by man, ID by woman, fair (Eichenhorn-CI)
- 6025NF UZBEK SSR R Tashkent at 1200-1230 and 1400-1430 with IS and EE pgm, dual  
9540 9600 11925 (Behr, Berghammer, Foster-Pac)
- 6030 GERMAN FEDERAL REP Sudddeutscher Rundfunk0615-0645 fair, man ancr, GG mx,  
ads, VOA QRM (Foster-Pac, E. Shaw)
- 6030RF JAPAN NHK CG, RR to Asia 1230-1330 ex-11875, dual 7140 11705 (Berghammer)
- 6034 CLANDESTINE V of Thai People, at 2300 with Thai or Kmer; fair (Behr)
- 6035 BRAZIL R Globo at 2220-0100 with PP mx, sports, ID, fair (Field, Ronda)
- 6035 AFRTS, xmtr unknown, with ABC Apollo 17 coverage after 0255 Dec 7, pgm was  
superior to that on VOA (Kamp)
- 6040 COLOMBIA LV de Tolima at 0403\* (Kamp)
- 6050 ENGLAND VOA-Woolferton with Apollo coverage dual 5995 at 0255 (Kamp)
- 6050v HONDURAS R America at 0320 with VOA Apollo relay in SS, back to own pgm at  
0400 (Kamp) sports and ID 0455 (Field) SS anmts, ads, ID, good (Patterson)
- 6055 CZECHOSLOVAKIA RP at 2210 in EE with mx, talk, Czech Xmas cooking (Wicks)
- 6055 JAPAN NSB-Tokyo with Bells of St Mary's 1300, man and woman in JJ (Miller)
- 6055 USSR Starobelsk good at 2220-2230 in EE to Eur. (Barto) My error, should be  
Tallinn; sked via DF: Starobelsk to Asia 2200-0530, Tallinn to Eur.1430-0300
- 6055 RWANDA R Rwanda in FF with mx, 2030-2102\* after NA, often good (Behr)
- 6060 SICILY RAI-Galtanissetta with Nocturne pgm dual 845; 0625 with TL ancr in  
between mx selections, fanfare, ID 0630: R Olivia (pgm ID) (Shaw)
- 6065 COLOMBIA R Super exc at 0500-0615 in SS, ID, organ and pop mx (Dexter,  
Dorfman)
- 6065 USSR R Vilnius with EE pgm on Lithuanian culture 0045-0100 to NA, dual 7160  
7180 7310 7420 9510 9550 9580 9730 (Barto)
- 6070 CANADA CFRX fair at 0310 with mx, mx, ads (Higham, Jeffrey) 1158-1430 with  
usual; DJ was Country Jack, ad for Fairview Mall, fair (Patterson,  
Eichenhorn)
- 6075 GERMAN FEDERAL REP DW with 1430 Macedonian, Slovene, Serbo-Croatian, dual  
6130; both very good some days (Behr)
- 6075 GREECE R Athens, HNBI, 1558 flute IS and anthem, 29 Nov, most unusual  
(Behr) WRTVH lists this as the National Program. FH
- 6075RF ITALY RAI at 0415-0440 with II and EE to Medit, ex-5990, dual 7275, good  
(Berghammer)
- 6080 ALGERIA RTVA good at 0815 with AA chants (Berghammer)
- 6080 CANADA CKFX at 0806-0816; this 'un only once a year or so from Calif., mx  
and male ancr; buried by Komsomolsk at 0808 (Young)
- 6080 Unid 0340-0400, slightly distorted signal, pop mx, EE ancr, covered by VOA  
by 0345; barely audible at VOA 0400\* (Wallace) Likely CKFX, OM. FH
- 6085 CANADA RCI EE at 0130, exc with mx and talk (Eichenhorn)
- 6085 COLOMBIA Ondas del Darien; Turbo, 0000-0057 when covered by RCI; SS mx, ads,  
IDs (Behr, Field)
- 6085 GERMAN FEDERAL REP Bayerische Rundfunk at 0650-0800 fade in GG with songs,  
anmts, cmtry, seldom heard this time period (Padula-Pac, Foster-Pac)
- 6085 NETHERLANDS ANTILLES R Nederland exc at 0615 with EE nx (Eichenhorn)
- 6086vNF Unid Mandarin speaking stn at 1000, no IS or ID; strong; could be a new  
Peking or BGC (for listed 6090 3 kW) channel, strong and early(Berghammer)

- 6090 AUSTRALIA VLI6, Sydney, NSW, EE nx and pop mx 1203-1214 (Patterson)  
 6090 LUSEMBOURG RLI at 0038 with pops, EE ID (Trkula)  
 6095v COLOMBIA LV del Centro at 1015 with full SS ID (Berghammer)  
 6100 FRANCE CRTF at 0622 in FF listing duals of 9585 9620, talk, good (Dorfman)  
 6100 YUGOSLAVIA R Belgrade fair at 2116 with SS IS and ID (Ronda)  
 6105 MEXICO Sistema R Yucatan at 1230 with full SS ID (Berghammer)  
 6120NF AUSTRALIA RA-Darwin here ex-6055 for Indon 1030-1050 (Padula-Pac)  
 6120 SWITZERLAND SBC with EE cmtry on election in US, good (Eichenhorn)  
 6125 UZBEK SSR R Tashkent fair at 1200 with EE IDs and nx (Eichenhorn)  
 6130 CANADA CHNX with Canadian election nx 0130 (Trkula) TCs, mx, talks, ads, nx, wx at 0646 (Wicks) nx 0930, good (Ronda) mx and ads 1311, fair-good (Miller)  
 6130 GHANA RG-Tema fair-good at 2133 with EE nx (Miller)  
 6130 NORWAY R Norway to 0630\* with Norwegian xmsn, EE ID (Dorfman, Eichenhorn)  
 6135RF POLAND PR 0400-0500 SS to LA, ex-31 meters; 41-mtr freqs. not hrd 27 Nov (Berghammer)  
 6135 TAHITI R Tahiti weak in FF at 0830 dual 9750 and 11825, records (Odlin)  
 6140 AUSTRALIA VLW6, Perth, 1300-1317 with election nx, pops (Lohe, Miller)  
 6140 NETHERLANDS RN-Lopik exc 0930-1050 with EE to Eur (Berghammer)  
 6147VNF Haitian, 1100 muddled FF ID after classical mx, mention of Cap Haitien; believe R Citadelle ex-6155v; irregular (Berghammer)  
 6150 AUSTRALIA ABC Melbourne poor with EE ID and nx 0900 (Wallace)  
 6150 COSTA RICA R Atenea exc at 0905-0930 with SS TC, ID, political anmt, (Lohe) 1200-1218 poor with man ancr, nx, martial mx; poor with het (Patterson)  
 6155 AUSTRIA ORF EE Report from Austria daily except Monday, 0030-0045 (Fabian)  
 6155t PORTUGAL R Renaissance briefly at 0800 in PP, QRM (Berghammer) Supposedly this one has been inactive; any definite IDs? FH  
 6155 ROMANIA R Bucharest fair with QRM in EE at 0400, mx, talk (Nikolich)  
 6155 SWAZILAND Swazi R at 0457-0600 with extreme QRM; EE ID and nx 0500, then mx and anmts (Young) FB for WONA, Jim FH  
 6159v VENEZUELA R Canaima, Ciudad Guayana, just activated though listed in WRTVH for at least two years; full ID at \*0925 Nov 28 (Berghammer) FB, Bill!  
 6160 COLOMBIA Em Nueva Granada 0200-0330 with SS talk, mx, Apollo 17 coverage Dec 7; very poor modulation (Kamp, Lineback)  
 6160NF HOLLAND RN-Lopik with AA to Africa at 1705, exc-11730; QRM from RA-Darwin until 1730, then in the clear (Padula-Pac)  
 6165 CANADA RCI EE to Eur. at 2131 good with Mailbag and Shortwave Club (Miller)  
 6165 GERMAN DEMOCRATIC REP RBI with EE at 0330-0400, mx, mx; exc (Carlson)  
 6175 BRASIL R Guarani good in PP with futebol championship at 2345-0000 (Lohe)  
 6175 HUNGARY R Budapest poor to fair at 0300-0322 in EE (Carlson)  
 6175 PERU R Tahuantisuyo at 1030 with SS and Indian talks, good (Behr)  
 6180 GUATEMALA TGWA unexpectedly hrd at 1725; was looking for XEIGM (Hauser) SS ID, good but much noise at 0045 (Ronda)  
 6185t MEXICO XEIGM, La Voz del Maestro, believed the one at 1730 with weak talks, nearing end of morning pgm (Hauser)  
 6195 TUNISIA Tunis good with AA chants at 0530-0545 and later (Wallace)  
 6195 SOUTH AFRICA Springbok R at \*0400 dual 4945 in EE and Afrikaans, dual 5955 and 6075 which were blocked (Berghammer)  
 6200 ALBANIA R Tirana fair in EE 0155-0200, cmtry, ID, NA (Lineback)

Hello to veterans and newcomers alike. This being my first introduction to the Bag Time, I would appreciate comments on this section of LR. Many thanks to Larry Magne for a fine job on LR and good luck with his new Clandestine column. Seems like everyone is hearing Galapagos, Malawi, Timor except me...I'm doing OK, though finally heard Rhodesia and Uganda this past week. Tropical band specialists ought to keep an eye on WWV's Solar Flux given at 18 past the hour; values below 100 usually indicate fine conditions. Don Jensen feels that the A-index is more important but the flux has never let me down. The receiver is a Hammarlund HQ129X, circa 1949 (six years older than me!); antennas are a ECB box loop, longwire and 80-meter inverted vee. My ham call is WA3QIA, and my last name is pronounced 'Hewitt'. It's French, originally, but difficult to pronounce in that language. I'm always willing to chat on the phone (not Collect, long distance!) or by mail.  
 73-Fred Heatte Jr WA3QIA, WDX3FH 1600 Newton St NE, Washington DC 20018 (202-529-0003)

- 6207 INTERNATIONAL WATERS,RNI EE pops 0100-0200, P (Fabian) 0530 EE rock, IDs, TCs; QRM de Tirana (Nikolich) Times should be 4 digits without the colon
- 6210 PAKISTAN Rawalpindi YL Tx in lang.(Bengali?), martial mx., no RNI (Martin-Eu)
- 6220 PIRATE (England) R. Gemini from 1030 on Sun., requests reports to 50 Hampstead Rd., Watford, England; mainly old pop music (Martin-Eu)
- 6225 PIRATE (England) R. Venus North, from 1300 on a Sun., ID1330, mainly pop (Martin-Eu) s/on 1300? are these Sun. only?
- 6230 PIRATE (England)Liberty Radio EE 1030 Sun., Reports to Box 41, 22 Coldershaw, West Ealing, London, W13 9DX (Martin-Eu)
- 6250 N KOREA Pyongyang 0810 mx. concert, occ. YL tx, OM tx. at 0820, 40 over!(Shaw)
- 6255 PIRATE (England) R. London Int 1045 Sun ex-R. Atlantis South QRM WMR-6250 (Martin-Eu) 1148 EE pops, Sun only. (Bruce-Eu)
- 6290 N KOREA Pyongyang 2135 KK OM+YL, cmtry, choral mx., exc (XXXX) XXXX ?!
- 6340 TURKEY Ankara Polis Radyosu 1840 TT pop vocal, ID 1900\*(Martin-Eu) TT mx, 1530 what seemed like mx (Bruce-Eu)
- 6540 N KOREA Pyongyang 1127 man in As. lang, martial mx (Schnabel)
- 6850 POLAND Polish Pathfinders 1336 Polish, pop mx (Bruce-Eu)
- 6900 TURKEY V Meteorology 1525 Turkish mx. (Bruce-Eu)
- 6938 CHINA Kunming 1355 CC mx (Bruce-Eu)
- 6975CHINA Huhehot, Inner Mongolia 1335 YL in Mongolian HS (Bruce-Eu)
- 7013.2v CLANDESTINE VNFUNK 1115 Khmere (Berghammer) Sorry about margin folks
- 7050 EGYPT Cairo 0425 AA mx (Eichenhorn) //7075 seemingly(Eichenhorn)
- 7056a UNID FF tx by man then woman 2055, hvy CW QRM (Duba)
- 7065av ALBANIA Tirana EE political Tx 2050(Duba)0007 EE nx by YL (Eichenhorn)
- 7100 USSR R. Peace&Progress 0020,0026 EE tx (Miller, Eichenhorn) To Caribbean
- 7108.2v THAILAND TRTV 1130 w/usual Thai songs (Berghammer)
- 7109.5 MALI Bamako 0845 FF soap opera(Berghammer) 0830 native mx, occ tx (XXXX)
- 7110 DOECANESE ISLANDS VOA Rhodes 0400 EEID into AA (Nikolich)
- 7115.6 THAILAND TNBS 1130 Thai political tx (Berghammer)
- 7120 UNID Oriental CM w/short amnts 1300, oriental mx. Could be Mongolian Service? (Shaw)
- 7120 USSR 'R. Vilnius' 0030-0100 on a Sat., co-channel w/Peking. Is somewhat interesting in that the frequencies were given as 6065,7120,7205(Potter)
- 7130 CHINA Taiwan 1250 CC mx, tx, G (Nikolich)
- 7135 MONACO RMC 2130w/ nx by FF OM, followed by pop mx at 2145 (Shaw)
- 7140RF JAPAN R. Japan 1230RR, 1300-1330 CC ex-9675 //6030, 11705 (Berghammer)
- 7145 ETHIOPIA ETIF multilingual test 0320-0325 (McCall)
- 7129 CHINA Peking RR 1130, jammed (Berghammer) Details? Out of order
- 7165 RYUKYU ISLANDS VOA 1230 EE nx, poor (Nikolich)
- 7180 AUSTRALIA(Perth relay ofRA) 1800-2000 EE to Afr., inaudible til 1930, // 9665 (Berghammer)
- 7180.2v POLAND PR 0630 Polish HS net (Berghammer)
- 7215 IVORY COAST 0600-0700 FF, Afr mx (Hagen)
- 7230 JAPAN NSB 1215 JJ ID per WRTH (Eichenhorn)
- 7230 RSPSR(As) Nicolajevsk list ITU, 0900 RM Mandarin (Berghammer)
- 7233.2v MONACO TWR s/on GG after mx box IS 0905 (Berghammer)
- 7235 VATICAN VR 2206 IS lang? (Miller) s/on to S. Pac. 2210 or so but dunno here
- 7240 NORWAY R. Norway Tromso 1200 Norwegian HS via 10kw xmtr sked here 0500-2300 for winter through Arctic darkness(Berghammer)
- 7245 AUSTRIA OR IS, EE ID 0730 (Eichenhorn)
- 7245.8v MAURITANIA RM 0830 AA melodrama, on early Independence Day(Berghammer)
- 7260 USSR end xmen in EE 0455(Nikolich) Why do you think this is Byelorussia?
- 7265 W GERMANY Sudwestfunk, Rohrdorf 0640 GG pops, spectacular for 10kw!(Shaw)
- 7268v ALGERIA RTA AA mx, YL tx 0700 (Seymour) 0800 AChants (Berghammer)
- 7275 NETHERLANDS RN Lopik 0800-0920 DD to Eur. (Berghammer)
- 7285RF PORTUGAL DW Sines 2200-2230 Bulagarian, QC (Berghammer) That's Bulgarian!
- 7290 MONACO TWR 0815 EE, 'Focus', rx nx, G (Wicks)
- 7290NF RSPSR (As) Krasnoyarsk RM Mandarin (Berghammer) A timeless item, hi!
- 7300V ALBANIA Tirana 0145 EE on Nixon(Eichenhorn) 0000-0200 Albanian,SS, EE, mx., mx., tx. (Fino) Specific details such as times for each lang OM, pse
- 7310 LAOS LV de Pathet Lao 1133-1200 Laotian amnts, SEA mx, Vietnamese noted 1149, // 4665(Young) Anyone care to comment on how to count such stations?
- 7330 PAKISTAN 1130 lang speech, then EE (Eichenhorn)

RIGHT IN THE MIDDLE OF THE LOG REPORT WE THOUGHT  
WE'D ASK YOU FOR SOME INFORMATION.....

NASWA has for several years been concerned with the problem of getting DX data to members in time for it to be more than mere history. In a way the problem has seemed impossible to solve on any reasonably large scale. However, it appears possible that we might be able to arrange for twice-monthly publication of FRENDEX during the portions of the year when such frequency of publication would be useful; i.e., fall through spring. There is nothing definite at this time. It is simply a possibility that is being looked into.....One of the biggest problems in publishing twice-monthly is that we would have to reduce the total number of pages per month to stay within our current postage budget, or at least it now seems that we would have to do so.

WE WOULD LIKE TO KNOW your feelings on certain matters that have some bearing on the matter. If dues were raised to \$11 per year it seems there would be no problem in publishing twice-monthly. But we are unwilling to arbitrarily raise dues without knowing the feelings of members on the matter.....So, would you rather see FRENDEX continue on a monthly basis throughout the year. Or would you feel a \$1 dues increase would be worth having FRENDEX twice a month during the DX season. If we go twice a month the Log Report Section would appear each time, with some of the other sections alternating.....YOUR COMMENTS ON THIS MATTER ARE NECESSARY FOR YOUR BULLETIN STAFF TO BE ABLE TO DISCUSS THE MATTER. So, please let us know. Write NASWA HDQ, Box 8452, S.Charleston, W.Va. 25303 USA

And now, back to the LOG REPORT.....

- 7345 CZECHOSLOVAKIA Prague 0150\* after giving sked, EE, F (Eichenhorn)  
 7462v UNID ASIAN \*0957 w/IS, opening ID is "Dai la...Vietnam...", however a radio drama around 1020 mentioned "Kampuchea" a few times. Maybe the CIA is putting all its eggs in one xmr, hi. (Kamp) cf. Oct, Dec. FRENDX
- 7520 CHINA Peking HS (1-ed.) \*1100 //7504. Maybe my Sept. "Fighters" logging was an accidental off-the-air pick up. (Kamp) cf. Oct. FRENDX OM
- 8404 CLANDESTINE R of S Yemeni Revolution 1946 AA chants, marches, F-G after 2000 (Barto) (I thought s/off was 2000-ed) 1825 1830AA nx, G (Martin-Eu)
- 9028 IRAN Teheran 1930-1950 lang tx w/native mx, heard often, G (Barto)
- 9475 EGYPT Cairo 0200 EE tx, 1st time for me (Jeffrey) 0210 AA mx, EE ID (Eichenhorn) EE to NA 0226-0245 G (Kamp)
- 9501vRF ALBANIA Tirana 1400-1430 EE to F. East, ex-25M (Berghammer, Potter)  
 0638 EE tx by YL on Socialism (Dorfman)
- 9500RF E GERMANY RFI 0445-0700 to Afr. noted 0530 ex-15430v (Berghammer) lang?  
 9504.6v SUDAN SRTV 1400 by short, winter path over Europe, low LUF (Berghammer)
- 9505V DOMINICAN REPUBLIC RTVD 2000 w/FF YL (XXXX) (FF ?-ed) 0415-0430 SS tx, anmts (Finé) 2345 SS nx w/ 2 ancrs, YL ID 2358 (Martin-Eu) 1035 SS, px for rural listeners (Poster-Pac) 1030SS ID (Lineback) 0407 SS ID (Eichenhorn) Anyone remember the good old days when they carried such denizens of the airwaves as Wolfman Jack?--ed
- 9505 JAPAN R. Japan 0700 EE nx (Jeffrey)
- 9510 USSR RM 0358 IS under the BBC, which site? (Kamp)
- 9510 ALGERIA RTVA \*0600-0645+1900-2215 AM prog (Hagen) ID? Details?
- 9510 MALAWI Lakeland Radio Hd. twice before 2145\* w/Billy Graham (Field) EE rx to 2150\* (Hoogerheide) 2110 EE rx, IDs (XXXX) cf. 9550, s/off app. varies
- 9515 INDIA AIR 2035 G (XXXX) What did you hear? Details please!
- 9520RF ENGLAND BBC 1115-1130 Slovak, Nov QC (Berghammer)
- 9510 CHINA (Taiwan) BCC 1845-1903 EE. Great! Sounds like a relay next door (Odlin) Believed to new, if so please state as such--ed (insert be after to)
- 9525 INDIA AIR Aligarh 2035 //9912 F-G (XXXX)
- 9525 CUBA RHC 0717 EE "Cuba and the World" (Dorfman) Should be interesting to see what RHC does as more nations diplomatically recognize Cuba--ed
- 9525 S AFRICA R.RSA \*1600 FF (M. Marshall)
- 9535 INDIA AIR 1225 EE pgm sked+wx, P (Miller)
- 9540NF UZBEK Tashkent 1200-1230 EE to S. Asia, tx about Uzbek SSR (Poster-Pac., Berghammer) ex-15115, no longer conservative frequency-wise--ed.
- 9540 LIBERIA VOAMonrovia 0400 EE ID (Lineback)
- 9540 NEW ZEALAND 0710 EE to Pacific Islands (Jeffrey) 0600 BBC Nx (Kamp) 0840 list of freqs, hrd later w/IS on 9510 later (XXXX) 9510??
- 9540 USSR R. Peace&Progress 0030 s/on As. lang (Potter)
- 9545RF W GERMANY DW 0630-0650 with new Frühprogramm (Early Program) to Africa, sked//7130, 11965, 15320 (Berghammer) Language is GG, right?
- 9545 GHANA R Ghana 2125-2135 EE nx, ID G (Lineback)
- 9550NF MALAWI Lakeland Radio EE 2000-2100, QRM de Moscow European Svce, ex-9510 (Padula) cf. 9510
- 9550.4V WINDWARD ISLANDS WIBS 1600 band mx, EE (Berghammer)
- 9555 FRANCE ORTF 0104 SS-FF lessons 0200\* (Miller)
- 9560RF ECUADOR HCJB 2100 GQ to Europe (now 9720), 0130 EE to NA (Potter)
- 9560RF JAPAN R. Japan 1000-1230 GOS to Europe //5990, 15195 (Berghammer)
- 9560 JORDAN Amman 1700 EE nx, G, seldom heard in the UE as ORTF is on the same frequency (Bruce-Eu) Isn't this program beamed to UK?--ed
- 9560 UNID PFF? M&F ancrs, tx, ID unreadable (Lineback)
- 9562 PERU RN 1055 SS ID (lineback) 0020 w/ sports (Field)
- 9570NF ENGLAND BBC 1115-1230 FF to Europe, QC ex-9750 (Now EE) (Berghammer)
- 9570 MALAYSIA BCFES Tebrau 1350-1400 EE ID, G (Shaw)
- 9570 AUSTRALIA RA Shepparton 1105 EE nx (Lineback) 0732 "Election Report" (Dorfman)
- 9570.0 SPAIN RNE 1530 SS Sun sports (Berghammer) If frequency is even and does not vary, then why use the decimal??--ed
- 9570 QATAR QBS Doha 1840-1855 AA instr mx, ID 1855, W-F (Barto)
- 9570 CHILE R. Portales 0100-0215 nightly at excellent level with soap operas and tx about Allende (Schnabel)
- 9575 ITALY RAI 0108 EE nx by OM, E (Eichenhorn)
- 9575 INDIA AIR Bombay 1310 "Vivad Bharati" Variety Show, chants (Potter)

- 9576 EL SALVADOR R. El Comercio 1405 SS tx, heard past 1645, G (Potter)
- 9576vt ETHIOPIA Unid lang+mx 1400-1428\* Sun only, down from 9578, F-G (Behr)
- 9580 PHILIPPINES VOP EE 0900-0945 pop mx+anncs., loud but impossible to understand female anncr(Hoogerheide)
- 9582 NICARAGUA R. Mar 1402 SS ID on 16 Dec. G, this was noted a while after they had moved up to 9595, but if I remember correctly they were back up to 9595 the same day(16Dec), so they may be testing. (Potter) of 9595
- 9590NF W GERMANY 1700-1735 EE to S Asia, //9510,11765,15275 (Berghammer) \*1520-ed
- 9590 CHILE R Presidente Balmaceda 1010 SS, international nx (Foster-Pac)2300-0021 nx, mx, ads, F-G (Lohe)
- 9590 NETHERLANDS RN 0440 SS mx, to LA, G (Lineback) Believe QTH is Bonaire instead of Lopik OM, so it should read Neth. Antilles-ed
- 9590 SWITZERLAND SBC 0658 IS, freq+time annc, "Dateline", P (Wicks)
- 9590 AUSTRALIA Shepparton 1127 lang, EEmx, EELID 1130 into another Asian lang (Lineback) The languages heard were Indonesian+Cantonese, respectively
- 9595 KUWAIT BK 1405 EE variety show, many IDs, YL ancr (E. Shaw)
- 9595NF NICARAGUA R. Mar 1340 SS ID on 3 Dec, strong level, heard virtually every day since then including today(19Dec), was back on old 9582 one morning but returned to here. One might speculate that the increased signal strength is due to a new xmtr w/higher power (Potter) of 9582
- 9600RF UZBEK SSR 1200-1230 EE to S. Asia // 6025NF, 9540NF, 41925(Foster-Pac, Berghammer, Barto) 1200-1225 EE nx+mailbag (Barto)
- 9605 UNITED STATES VOA 1538-1555 As lang tx, ID, G (Lineback)
- 9610 AUSTRALIA Perth 1132 EE, mx+political interview, not //9570, 9580 (Lineback) 9610 is the domestic program broadcast from Perth, W. Australia-ed
- 9610.3v ALGERIA RTVA 0830 AA chants, QRM Nouakchott(Berghammer) QRM Nouakchott on Independence Day only?-ed
- 9611v MAURITANIA RM 0830 AA, Fr. Independence Day //7245.8v(Berghammer)what do you mean by Fr. ? Also if //7245.8v, then why report both?-ed
- 9619t TRUCIAL STATES V of Arab Emirates 1640-1700 AA chants, mx (Barto)
- 9620 BRAZIL R 9 de Julho 0030 futebol relay+pop, strong (Martin-Eu) 0215-0303\* PP+US pops, IDs (Lohe)
- 9620 YUGOSLAVIA R Belgrade 2200-2215 EE nx+cmtry (Ronda, Munger) 0058 IS, SS ID heard nicely "Aqui Yugoslavia"(Odlin)
- 9625 CANADA RCI 2316 EE Short Wave Club(Lineback)\*2300-2330\* EE, nx, "Todays Magazine", Sports, stock report(Higham) What LR needs (and has needed for years)is a short notation to indicate that a station merely changes languages, witness the example above,as PP begins on 9625 at 2330-ed
- 9630RF ITALY RAI 0350-0410 EE to S Asia //9710 (Berghammer)
- 9635 COLOMBIA RN 1200 SS ID, crowing rooster,F (Lineback)
- 9635 BRAZIL Raparecida 0010 PP 'in gud voice', ID 0015 (Martin-Eu)
- 9635 CANADA \*0100 EE nx, tx //6085 (Hafer, Jeffrey) 1/4 mw-ed
- 9640 S KOREA VOPK 1205-1230 EE nx, letterbox (Munger)
- 9640NF CYPRUS BBC EMR AA 0345-0545 //7320, ex-9650 (Berghammer)
- 9650 GUINEA Conakry 0420-0500+ continuous Afr mx(Kamp)1915-1932 Afr mx, some tx in lang(Barto)0638 loud FF tx(Nikolich)2250 Afr tx(Ronda) what is Afr tx?
- 9650RF W GERMANY DW1120-1220 JJ //11850, ex-9515 (Berghammer)
- 9655 SYRIA Damascus 2015-2200\* EE pgm, G (Hagen)
- 9660 VENEZUELA R Rumbos 0440 SS ID, LA mx (Eichenhorn)
- 9665 AUSTRALIA RA Perth 1800-2000 EE to Afr //7180;SINPO 45434 (Berghammer) 2000-2100\* Afr service in EE, F (Hagen)
- 9670 PORTUGAL IBRA Radio 1945 EE rx "Kathryn Khulman Hour" (XXXX)
- 9675.2v POLAND PR 1630-1700 EE to Afr, Revived facy, //25M (Berghammer) You can be more specific than 25 M can't you?
- 9685 USSR "R Kiev" \*0030-0100\* EE broadcasts on Mon, Thur, & Sat. (Higham) If this is a sked it should be sent to IN, also list full facy, not 9.68
- 9680 AUSTRALIA V1H9 Melbourne 1200 EE nx, 1300\* WRTH list s/off 1400. No sign of other Australian locals yet (Bruce-Eu) out of order
- 9690v ARGENTINA RAE 1100-1200 JJ (Berghammer) 0345-0350mx, EE comment(Lineback) 0300-0400 EE, G by 0345(Carlson) 0600 only 3 min EE nx the day before and the day of Perods return. It is dull (Kamp) What else is new? hi-ed
- 9690NF W GERMANY DW-W 0145 EE NA, RAE het, DW pirates again(Seymour)
- 9695 S AFRICA R. RSA 0230 EE comment on Rhodesia (Eichenhorn) 0315 FF to Afr,

- 9695 (contd from preceding page) Afr+cl mx (Lineback) 2228 "South African Panorama"(Wicks)
- 9700 BULGARIA Sofia \*0400-0428\* EE nx, mx, cmtry(Hafer)
- 9710 ECUADOR HCJB 0430-0500 EE tx on foster children(Fino)0743 EE rx pgm(Dorfman) 0900-1000 Peruvian Quechua RF new service(Berghammer)
- 9705RF ETHIOPIA ETLF 1710-1810 Swahili to E Afr ex-9695(Berghammer)out of order
- 9710RF ITALY RAI 0415 to E Afr (Amharic, Italian, Somali) (Berghammer)
- 9709v MAURITIUS Indian pgm from 1145, peaking 1240-1245, s/off at 1307v, Hearing any audio depends on how strong R. Malaysia is (Young)
- 9715 NETH.ANTILLES RN Bonaire Noord 0512 DX Juke Box (Eichenhorn,Jeffrey)
- 9715RF PHILIPPINES FEBC 0930-1100 RR ex-9505 (Berghammer)
- 9715 CONGO LV du Rev 1830-1845 FF+Afr tx, OM tx on Angola, also PF, pop mx+Afr mx. (Barto)
- 9720 SRI LANKA R Ceylon 0130 EE "Back to the Bible"(Nikolich)1320-1500 folk mx educ pgm, rx pgm, QRM Moscow (Lohe)
- 9720NF ECUADOR HCJB 2055 FF, 2100 GG ID new fqcy, app ex-9560 which was RF in Nov of this year (Potter)
- 9740NF CZECHOSLOVAKIA R Prague 0100-0150 EE to NA "news, views, and music from Czechoslovakia" (Berghammer, Potter)
- 9750 TAHITI RT 0831 FF on a Sun, some EE mx, //6135,11825(both hd) (Odlin)
- 9752v VENEZUELA R. Occidente mx pgm 2130 w/ brief sports rpts to past 2240 when carrier of some station came on(Field) quite strong here-ed
- 9753 CHILE R Minería 1505 SS OM hosting big Latin mx pgm.Goodlevel, heard past 1600 occasionally at excellent level. SS ID at 1615, many mentions of Minería (XXX) A prime example of winter cx!-ed
- 9754.4v BRAZIL R Brasil Central 0945 full PP ID (Berghammer)
- 9755 CHINA PR Peking 1500s/on RR service at quite strong level (Potter)
- 9760NF BELGIUM Brussels FFrx 2145, 2200\*, NF ex-9610 fq change made in early December, 9610 QRM from VOA-Tangler(Padula)
- 9765 GERMANY DW 2100\* EE to SE Asia (Potter)
- 9765NF NETH ANTILLES TWR 0330-0545 to E Eur, ex-25m, ex-4.9m, noted at s/off 0545 after Polish. ITU lists 50kw (Berghammer)
- 9765 ENGLAND BBC 0050 lang, ID, E (Lineback) SS, if I remember correctly-ed
- 9770 AUSTRIA OR 0100 FF into GG, mx, P (Lineback)
- 9780 ALBANIA R Peking 0300 EE nx (Lineback)
- 9805 EGYPT Cairo 2200 EE nx+comm (Eichenhorn)
- 9833 HUNGARY R Budapest 0115 EE tx on construction skeds&housing(Trkula) 0255 EE tx about radio(Lineback)
- 9840RF RSFSR (Eur) RR HS here at 0445, Baku was formerly here (Listed) (Berghammer) Couldn't this be Baku?-ed
- 9987 CLANDESTINE V of FUNK weak at 1324 tune to past 1335, All tx by Om+ YL (Dexter) putting in good signals here //10080 after \*0000. This one is always several S units stronger than 10080, yet a two antenna DF technique gives identical S-unit differentials, so apparently use same xmtr site (Kamp) Who said they were different(DF)

And now for a few additional items/corrections:

- 6210 PAKISTAN time should be 1610; cf 6210 this issue
- 7120 USSR The day for R. Vilnius is Sun. GMT but Sat EST; cf 7120 this issue
- 9540 UZBEK SSR this fqcy replaces 15415; cf 9540 this issue
- 9540 MALDIVIVE ISLANDS The Radio DX Club of India in an item aired over HCJBs DX Party Line indicates that the MBS was heard on this fqcy between 0700-0900. If so, some NA DXer with an ample supply of patience may just hear this one, hi.

Thus ends my first effort as one of four LR editors, I appreciate the support that NASWA members have given/are giving to FRENEX and LR in particular and hope that the support will grow as we venture into the new year 1973.

So, beat 73s,  
David Potter

- 10010 CAMBODIA Liberation R 2000-2030 SEA lang. by W, F(Wallace); 2330-0000 EE to GIs (Kamp)
- 10040 N. VIETNAM VoV 1530 EE, mx, tlk, F(Jeffrey)
- 10530 KAZAKH SSR Alma Ata 1200-1230 RR by M & W, class mx, hrd dly (Barto)
- 11347 N. KOREA Pyongyang 2345 KK rally, enthus. tlk, mx, nom 11350, G(Hausser)
- 11413 CLANDESTINE R Peyk-e-Iran \*1430, abt. on, mx, ID, not as good as //11695 (no lang. or credit-ed.); 1622 Farsi, ID by OM & YW (Bruce-Eu)
- 11620 INDIA AIR 2000 EE for UK, ann. 9525 (Nikolich)
- 11650 CHINA RP 1324 EE, cmtry, F(Miller); 1100 SS, YW ID, mx, F(Eichenhorn)
- 11690 ARMENIA SSR RM 0540 EE, mx, tlk, ID, G(Nikolich)
- 11695 CLANDESTINE R Peyk-e-Iran 1430 Persian, ID, anthem, tlk, //11413, G (credit?); 1515-1530\* Farsi?, nx, IS (Martin-Eu)
- 11705 GREECE VoA Kavala 21000-0000\* EE to Afr. & Eu. (Padula-Pac); 0000\* EE, local tx ID (Foster-Pac)
- 11710 AUSTRALIA RA 0807 EE to NZ & S Pac, mx, nx (Jeffrey)
- 11720 BRAZIL R Nac Brasilia 2252 EE, ID, sched., F(Miller)
- 11720 CANADA CBC no. serv. 2210-2240 EE & Esk. lang., tlk, G(Fino)
- 11720NF MALAGASY REP RN Talata \*0030 EE to SEA, ex 11730 (Padula-Pac)
- 11720NF ETHIOPIA ETLF 1630-1655 Persian, ex 11850, F(Berghammer)
- 11725NF NETH ANT TWR 2100-2130 EE to UK, new serv. (Padula-Pac)
- 11725 SRI LANKA R Ceylon 0200 EE, BBC nx, //9720 (Nikolich)
- 11730 NETH ANT RN 0200-0320\* EE, E(Fino, Carlsen); 0750\* EE, mx, F(Dorfman)
- 11730.2vNF RUMANIA RB 1100-1130 EE to Afr., //17850, F(Berghammer)
- 11740NF RSFSR (AS) Novosibirsk 1030 RR, F(Berghammer)(program? ed)
- 11745 ECUADOR HCJB 0030-0100 EE, DX px, E(Carlsen); 0300-0325 EE, tlk, mx, G(Fino); 0500 EE, ID, nx, mx, P(Eichenhorn-CI)
- 11745 UNID 0445, electronic mx, F (Eichenhorn)
- 11750 ENGLAND BBC 2030 EE to Aust. & NZ, P(Jeffrey)
- 11750 MALAYSIA BBC 1430 EE, mx, P-F(Eichenhorn)
- 11760 USA VoA 0100-0210 EE, nx & cmtry (Fino)
- 11765RF W GERMANY DW 0900-1110 GG to FE//15225, F(Berghammer)
- 11765NF BELGIUM RB 1705 African langs., mx (Padula-Pac)
- 11770 MEXICO XERM 0550 SS, ID, mx, G; 1455 SS, ID, mx, F-G(Eichenhorn)
- 11775 INDIA AIR 1015 EE, Ind. mx to Aust., G(E. Shaw)
- 11775 RUMANIA RB 0300 EE, IS, ID, nx, F-G(Eichenhorn-CI)
- 11780 NEW ZELAND RNZ 0600 EE, BBC nx, F-G(McCall); 0705 EE, Election rept., F-G(Seymour)
- 11780 ARGENTINA R Belgrano 0030-0232\* SS, futbol, also ID's as R Argentina en Buenos Aires (Lohe)
- 11780 W GERMANY DW 1610 BB to Bulgaria, P(Jeffrey)
- 11780 MOZAMBIQUE RCM \*0500-0645 EE, ads, mx, QRM de RNZ at 0600, G(McCall, Hagen)
- 11780 LIBERIA VoA 0600 ID (McCall)
- 11785 BRAZIL R Guaiaba 0828-0850, DJ px, E(Kamp)(lang.? ed); 2330-0137 PP, ID, sports, QRM de TWR Bonsaire in at 0137 (Lohe)
- 11785 RSFSR (AS) RM 1100-1130 Bengali (via Sverdlovsk), G(Berghammer)
- 11789.2vNF RUMANIA RB 1200-1230 Greek, P(Berghammer)
- 11790 S AFRICA SABC 0640 EE, mx, cmtry, rare here (Padula-Pac)
- 11795 ZAIRE Kinshasa 0140 FF, Afr. mx, tlk (Padula-Pac)
- 11800 BELGIUM RB 1935 FF, nx, blocked by RNE at 2000, (Padula-Pac)
- 11800 S AFRICA RSA 2000 PP to Port., F(Jeffrey)
- 11800 SRI LANKA CeBC 1500-1700 EE and local lang., IS, G(Hagen)
- 11805 BRAZIL R Globo 0000-0027 PP, ID, sports, F(Seymour, Ronda)
- 11810 INDIA AIR-Dehli 1337 EE, nx, P(Miller); 1400-1500 EE, G(Munger)
- 11810NF ECUADOR HCJB 1900-2045 EE to Eu., //15300,17755, G(Berghammer)
- 11810 VATICAN VR 1505-1530 EE & Asian lang. to India & SEA, tlk (M. Marshall)
- 11810 ETHIOPIA ETLF \*1700 FF, mx, tlk, P(Nikolich)
- 11820 NETH ANT TWR 0045 EE, DX px, (Martin-Eu)
- 11820 RSFSR (AS) Kragnoyarsk 0700 CC, IS, tlk, F(Dorfman)
- 11820 ENGLAND BBC 0200 SS, nx, G(Eichenhorn)
- 11825 TAHITI ORTF, RT 0300 Tahitian, mx, F(Miller); 0830 FF, mx, G, //6135 P, 9750 F, (Odlin)
- 11825 TAIWAN R Liberty 2200, IS well hrd then jammed (Odlin)(//11860? ed)

- 11830 PHILIPPINES VoA 2159 EE, ID hrd under US tx, (Odlin)  
 11835 HAITI 4V EJ 1315-1330 EE, rel px, F(Munger)  
 11835NF SRI LANKA CoBC 1030-1130 EE to SEA, ann. this freq. ex 11740, but not hrd yet, prob. irr., //15120,17830 (Foster-Pac)  
 11835 URUGUAY R El Espectador 0200-0205 SS, ID, tlk, P(Dildine)  
 11840 AUSTRALIA RA 1800-1900 EE to Pac., nx, rel px, (M. Marshall)  
 11840 CUBA RHC 0334-0340 SS, nx, cmtry, G(Fino)  
 11855 SAUDI ARABIA Djeddah 1730 EE pop mx, ID, EE nx at 1745, F-G(Seymour)  
 11860 UNID 1630 Arabic chants (Behr)  
 11860 TAIWAN R Liberty #2200 RR, jammed, (Padula-Pac)(//11825? ed)  
 11860NF CANADA RCI 1830-2000 EE to Afr., //15320, 17820, 21595, E(Berghammer)  
 11865 BRAZIL RC Pernambuco 0355 PP, mx, tlk, P(Eichenhorn)  
 11875 NICARAGUA R Nac 2220 SS, nx, ID, mx, F-P(Eichenhorn)  
 11875 ANGOLA Emissora Oficial 1523-1545 EE, FF after 1545, F(Munger)  
 11880 TURKEY Ankara #1430 Persian, IS, mx, E(Nikolich); #2200-2215 EE, nx, Turkish mx, F-G(Ronda, Odlin, Seymour)  
 11880NF ETHIOPIA ETIF 1930-1945 EE to W. Afr., nx, rel mx, ex 11955 (Padula-Pac, Nikolich)  
 11885 S AFRICA SABC 0700 Afrik., internal svce., ID & TC, audible now that RFE not using freq. QRM de VoA-Tangier till 0700 (Padula-Pac)  
 11892NF ZAMBIA ZBS 0500 EE, ID, nx, TC (Foster-Pac, Padula-Pac)  
 11900 S AFRICA RSA 1900-1950 FF to Eu, G(Berghammer); 1920 EE, tlk, F(Wicks)  
 11900 CHILE LV de Chile 0030 SS, mx, ID, F(Behr)  
 11910 ETHIOPIA ETIF 1940-2015\* EE, nx, tlk, G(Hafer)  
 11910 ALGERIA(Cland.) VoPalestine 1900-1930 AA, tlk, //11920,11965, not jammed (Duba)  
 11915 ECUADOR HCJB 0035-0050 EE, mx, tlk, G(Fino)  
 11920 IVORY COAST RTVI 1934 EE, tlk, ID, P-F(credit? ed)  
 11920 ALGERIA(Cland.) VoPalestine 1900-1930 AA, //11910, 11965, jammed, (Duba)  
 11920 ALBANIA R Tirana, EE, nx, F(Eichenhorn-CI)(time please ed)  
 11925 SPAIN RNE 1530 SS, mx, sports, G; 0200 EE, nx, QRM de Brazil, F(Lohe)  
 11925 BRAZIL R Bandeirantes 0025 PP, sports, P(Ronda)  
 11925 LIBERIA VoA 0410 EE, tlk, F(Nikolich)  
 11925RF W GERMANY DW 1400-1420 GG to ECNA //15245, 17755, 21540, E(Berghammer)  
 11930 CUBA RHC 0130-0135 EE, nx, mx, (Fino); 0210 EE, cmtry, E(Eichenhorn); VoV px 0343 EE cmtry, E(Hafer)  
 11930 PHILIPPINES VoA-Tinang 1500 SS, mx, F(Eichenhorn)  
 11935 PORTUGAL RP 0420 EE, ID, tlk, mx, G(Wicks); 1345-1445 Ukr. RR, E(Berghammer)  
 11935 BRAZIL Unid 1010 PP, tlk, (Ronda)(RC Paranaense per Dec LR ed)  
 11935 S AFRICA Springbok R 0640 EE/Afrik., drama, ads, F-G(Seymour)  
 11935NF ENGLAND BBC 1445-1515 Czech., 1545-1645 Ukr. RR, //9525, G(Berghammer)  
 11940 LIBERIA ELWA 2019 EE, rel px, (Bruce-Eu)  
 11945 AUSTRALIA RA Darwin 1130 EE into CC, F(Berghammer)  
 11945 CANADA RCI 2300-2330 EE, nx, cmtry, G(Fino)  
 11948 PARAGUAY R Encarnacion 2328-2340 SS, ID, mx, QRM de RCI (Shaw)  
 11955 ETHIOPIA ETIF 1330 EE, ID, IS, nx, F(Miller); 1330-1510 EE, Telegu, Hindi, G(Berghammer)  
 11955 SEYCHELLES FEBA #1700-1900\* EE, AA, and other ME langs., ID, EE rel px at 1730, //15330, G(Lohe, Munger, M. Marshall, Seymour, Hagen)  
 11955 LEBANON RL #1830-1930 EE, nx, mx to 1900 then AA (Hagen)  
 11955 LIBERIA VoA 2000-2200 Czech., Polish to E Eu (M. Marshall)  
 11960NF PORTUGAL RP 0600-0700\* PP (Padula-Pac)  
 11965 BRAZIL R Record 0020 PP, futebol, F(Ronda)  
 11965 ALGERIA(Cland.) VoPalestine 1900-1930 AA, // 11910, 11920, not jammed (Duba)  
 11970 S AFRICA RSA 0135-0145 EE, tlk, mx, G(Fino); 0235 EE, nx, F-P (Eichenhorn); 1900-1950 EE to UK, // 7270, 15175, G(Berghammer); 2240 EE, mx, tlk, G(Wicks); 2330-0030 EE to NA, nx, cmtry, DX px, (M. Marshall)  
 11975 GRENADA WBS 0200 EE, nx, G(Nikolich)  
 12000 AUSTRALIA VNG 0900, F(Jeffrey)  
 12025 N VIETNAM VoV 1308-1327 EE, P(Carlson)(change from 12020? ed)  
 12230 USSR Magadan? 1240-1248 RR dialect, class. mx, off at 1248, F-G(Barto)

- 13200v CLANDESTINE R Euzkadi 2230-2300, mx, tlk, G(Hafer)(lang.? ed)  
 15000 ARGENTINA LOL 2330 SS, time and ID, G(credit?)  
 15080 INDIA AIR 1845-1905 EE, mx, Ind. mx, (Lohe)  
 15084 IRAN R Iran 1705 Persian, mx, chants, G(Nikolich)  
 15103.3vF GRENADA WIBS 1800 EE, local px, F(Berghammer)  
 15105 JAPAN NHK 2315 EE, DX px, G(Nikolich)  
 15105 BRAZIL R Rural Brasileira 1020-1245 f/out, mx, ads (Foster-Pac); 2123-2200 PP, tlk, ID, G(Eichenhorn); 2245-2305 PP, ID, mx, G(Lohe)  
 15120 NIGERIA VoN 1645-1702 EE & AA, ID, drums, rel px (Lohe, Carlsen); 1900-1940 EE & FF, nx (Behr, Padula-Pac)  
 15120 POLAND PR 1259, 1300-1400 Polish, IS, ID, F-G(Miller, Berghammer)  
 15125 MEXICO XERMx 1458 SS & other langs., ID, mx, G(Wicks)  
 15130 USA WNYW 1845 EE, mx, G(Jeffrey)  
 15135NF W GERMANY DW 1300-1500 GG to S Asia (Berghammer)  
 15140 CUBA RHC 2040 EE, LA mx, ID, G(Eichenhorn); 2133 EE to Eu, ID, P(Wicks)  
 15155 S AFRICA RSA 1800-1850 GG, (Berghammer)  
 15155 BRAZIL R Tupi 1955 PP, futebol, QRM de RSA (Martin-Eu); 2350 PP, ID, tlk, G(Ronda)  
 15160 AUSTRALIA RA 0830 EE, s/off to mid Pac., E(Jeffrey)  
 15165 DENMARK RD 1330-1340, 1730 EE ID into DD, F-G(Munger, Lohe)  
 15170 TAHITI R Tahiti 1753 EE, nx, wx, mx, then FF (Odlin); 0548 FF, mx, tlk, TC, //11825, F(Nikolich)  
 15170 LIBERIA ELWA \*2000 FF, IS, tlk, (Duba)  
 15175 S AFRICA RSA 2000-2150 PP to Afr., E(Berghammer)  
 15185 USA WINB 2259 EE, mx, G(Jeffrey)  
 15190 CONGO R Brazzaville \*1800-1836 PP to Angola(R Ang. Combatente), G(Behr, Berghammer); 1900-2010 FF, tlk, Afr. mx, G(Lohe, Duba)  
 15190 USA VoA Delano tx 0500-0600, Apollo 17 launch (Kamp)  
 15190 BRAZIL R Inconfidencia 0140 PP, ID, mx, ads, F(Miller)  
 15190 ETHIOPIA ETLF 1345 EE, rel px, P(Duba)  
 15195 JAPAN NHK 2200 EE, ID, VP(Ronda)  
 15215 USA WNYW 0137 EE/SS, pop mx, P-F(Miller)  
 15220 S AFRICA RSA 0135 EE, nx, F(Miller)  
 15240 CZECH RP 1530-1630 EE to Afr., G(Berghammer)  
 15245 ZAIRE Kinshasa 1850 FF, tlk, F, 0130 FF, nx, G(Duba)  
 15256 TUNISIA? 1530-1700 AA px, chants, one day on 15266, nothing on 15216 (Behr)  
 15260 ASCENSION IS BBC 0125 EE, nx, F-G(Miller)  
 15280 USA KGEI 2230-2300 EE, rel px, G(Miller)  
 15312 GUINEA R Conakry 0103-0115 FF/Afr. lang., ID, F(Dildine)  
 15315RF PORTUGAL RCI Sines 1345-1445 Ukr. RR, G(Berghammer)  
 15320 AUSTRALIA RA 0121 EE, drama, F(Miller)  
 15320NF MALAGASY REP RN-Talata 1100 EE to Aust., ex 15195 (Padula-Pac)  
 15325 CANADA RCI 1840 EE, nx, F(Jeffrey)  
 15355 AUSTRALIA RA 0058 EE, rr mx, IS, P(Miller)  
 15365NF ETHIOPIA ETLF 1945 FF, nx to W Afr., ex 15385 (Padula-Pac)  
 15370 NETH ANT RN 1930-1950\*, s/off to NA, F(Lohe)(EE? ed)  
 15385 MEXICO R Mex 0041 EE/SS, EE ID, LA mx, G(Miller)  
 15410 RWANDA DW Kigali 0037 GG, nx, cmtry, P(Miller)  
 15410 USA UN R 2053 EE, Gen Assem Mtng, cng to 15415 at 2200, F(Jeffrey)  
 15415 BRAZIL RC Ribeirao Preto 0000-0031 PP, mx, sports, F-G(Lohe, Miller)  
 15415 KUWAIT RK 1800 EE, non-stop pop mx, F(Seymour)  
 15425 GREECE NHBI 1300-1350 Greek to Sp., G(Berghammer)  
 15425RF W GERMANY DW 1240-1350 Indonesian, F(Berghammer)  
 15425 AUSTRALIA RA VLW15 Perth 0314 EE, ID, mx, P-F(Miller)  
 15435 MALAYSIA BBC 0000 EE, FES, mx, RITY QRM, //17860 w/same QRM (Odlin)  
 15435 TANZANIA RT 1900 EE, ID, nx, F(Seymour)  
 15440 USA WNYW 1645 EE, mx, E(Eichenhorn); 1700-1900 EE to Eu, G(Berghammer)  
 15440 PHILIPPINES FEBC 0100 EE, rel px, ID, //15390, P(Odlin)  
 15445 JAPAN NHK 0000 EE, nx, G(Ronda)  
 15520 BANGLADESH RB 0028-0200 EE & lang., IS, anmts, Indian mx, nx, ID in EE 0145, TC, (Young)

17705 ENGLAND BBC 1700 EE, WS nx, f(Lineback)  
 17709.3v RUMANIA RB 1300-1330 EE, //15250, G(Berghammer)  
 17715 AUSTRALIA RA 2215 EE, mx, F(Jeffrey)  
 17720 ECUADOR HCJB 1245 SS, G(Berghammer)  
 17720 TAIWAN VoFC \*0200 EE, IS, ID, nx, P(Hafer)  
 17760 USA WNYW 2220 EE, mx, G(Jeffrey)  
 17760.2 RUMANIA RB 1130-1200 FF to Afr., G(Berghammer)  
 17775NF W GERMANY DW 1400-1420 GG to NA, //11925, 15245, 21540, G(Berghammer)  
 17780 AUSTRIA ORF Vienna 1520 GG, mx, F(Miller)  
 17789.7vNF ALGERIA RTVA 1245 AA, G(Berghammer)  
 17810 NETHERLANDS RN 1955 EE, tlk, G(Lineback)  
 17810 ENGLAND BBC 1440 EE, F-P(Eichenhorn-CI)  
 17815 BRAZIL R Cultura Sao Paulo 2300-0000 PP, tlk, ID, mx, F-G(Lohe)  
 17820 CANADA RCI 1855-1905 EE, cmtry, ID, mailbag px, E(Lineback)  
 17830 USA VoA 1425 EE, tlk, E(Eichenhorn-CI)  
 17842 PAKISTAN RP \*1330 EE, to ME, nx, (Foster-Pac)  
 17845 USA WNYW 1703, 1801-1830 EE, rel px, E(Miller, Lineback)  
 17850 RUMANIA RB 1100-1130 EE to Afr., F(Berghammer)  
 17855 CUBA RHC 1550 SS to LA, mx, P(Jeffrey); 1730-1755 FF, tlk, ID, E(Lineback)  
 17860 MALAYSIA BBC 0000 EE, nx, //15435 RITY QRM, (Odlin)  
 17870NF AUSTRALIA RA Darwin 0400-0800 EE to SEA, //21485, switches from Shep. at 0400, F(Berghammer)  
 17895 MALI RM 1500 EE, IS, ID, QRM de VoA (Nikolich)  
 17900 VATICAN VR 1634 EE, rel nx, (Trkula)  
 17920 EGYPT RC 1410 EE, anmts., E(Eichenhorn-CI)  
 17935 BANGLADESH RB \*1230-1247 EE, IS, nx, tlk, F-G(Hafer, Seymour, Bruce-Eu)  
 21485 SWEDEN RS 1529 FF, ID, G-F(Eichenhorn)  
 21505 SWEDEN RS 1430 EE, mx, tlk, F(Wicks)  
 21520RF S AFRICA RSA 1000-1050 EE to Aust., //15220, 17820, F(Berghammer)  
 21525 USA WNYW 1737 EE, rel px, F(Miller)  
 21530 ENGLAND BBC 1230 Thai, not //21550, (Foster-Pac)  
 21540RF W GERMANY DW 1400-1420 GG to NA, G(Berghammer)  
 21550 ENGLAND BBC 1516 EE, mx, E(Miller)  
 21555 BELGIUM RB Dutch, football, E(Miller)  
 21460 ECUADOR HCJB 1555 EE, rel px, mx, E(Eichenhorn)  
 21560 ITALY RAI 1532 II, jazz, F-G(Miller)  
 21575NF CZECH RP 0700-0800 EE to Aust., (Padula-Pac)  
 21580 FRANCE ORTF 1546 FF, tlk abt sports, G(Miller)  
 21585 SWITZERLAND SBC 1550 PP, tlk abt Brazil, G(Miller)  
 21610 ENGLAND BBC 1505 EE, nx, E(Eichenhorn-CI)  
 21610 GREECE NHBI 1400-1450 Greek to Carib., SAH w/VoA, G(Berghammer)  
 21640 ENGLAND BBC Hausa, //15105, G(Berghammer)(time plse ed)  
 21645 FRANCE ORTF 1540 FF, tlk, E(Eichenhorn)  
 21650RF W GERMANY DW 1120-1220 JJ, //9650, F(Berghammer)  
 21680 CZECH RP 1530-1630 EE to Afr., //9605 F(Berghammer)  
 21700 PORTUGAL RP 1513 PP, mx, G(Miller)  
 21705 AUSTRIA OR Vienna 1000-1200 GG to Aust., (Padula-Pac)  
 25650 ENGLAND BBC \*0900 EE, WS to Asia, E(Padula-Pac)

\*\*\*\*\*  
 This portion of LOG REPORT was edited by Jerry Lineback, Box 435, St. Joseph, Illinois, 61873.  
 \*\*\*\*\*

HDQ NOTE The picture of the NASWA cloth jacket emblem which appeared in last month's MAIL CALL didn't turn out too well. The emblem is 3½ inches in diameter, background is black. The design is basically the NASWA rubber stamp design, with the two circles in green, the lettering in gold. The words "UNITY" and "FRIENDSHIP" are somewhat larger, proportionately, than on the rubber stamp. Cost is \$2.50 each, and it can be ordered from HDQ. We will allow sufficient time for members to order before placing the quantity order, but we suggest you order as soon as possible. The price again is US\$2.50, or 2 for \$4.50. Order from NASWA HDQ, P.O. Box 8452, S.Charleston, W.Va. 25303.



**CREDITS** Our thanks to those who again made possible this extensive listing of just what can/is heard on shortwave.

Sam Barto, CT, Super-Pro  
 Ernie Behr, Ont., NC400  
 Bill Berghammer, NY, SP600  
 Robert F. Bruce, Scotland, Eddy 830/7  
 Bob Carlson, Ohio, SX190  
 Steve d'Adolf, NJ, R530  
 Gerry Dexter, Wis., HQ180, R4B  
 R. Stephen Dildine, VA, R390A/URR, DSR1  
 Steve Dorfman, NJ, SW4A  
 Eric Draut, Ill., Zenith R-7000-1  
 Mark Duba, VT, SX190, S76  
 S.W. Eichenhorn, CANARY IS, Panasonic Portable

S.W. Eichenhorn, MICH, SX190  
 George Fabian, NY,  
 Marlin Field, MICH, SX100  
 Dan Ferguson, W. Va., SB310, R388/URR  
 Henry Pino, NY, RCA Victor  
 David Foster, AUSTRALIA, Trio 9R-59DB  
 Gary Hafer, PA, Panasonic  
 Glenn Hauser, TX, HQ160  
 Fred Heutte, D.C., HQ129X  
 John Hoogerheide, Mich  
 Bill Higham, Ohio, Magnavox portable  
 Tom Jeffrey, Oregon, HQ100A  
 Steve Kamp, CA, Hq140X  
 John Kolb, CA  
 Russ Lay, VA, DX150A  
 Jerry Lineback, Ill., SPR4  
 Ernst G. Lohe, VA, R4B  
 Larry Magne, PA, R4B  
 Mildred Marshall, N.D., SX122  
 A. E. Martin, ENGLAND, AR88D  
 Hiro Matsuura, JAPAN, A-2515  
 Calvin McCall, VA  
 A. A. Miller, Ohio, HRO500  
 Doug Munger, N. Mex., SX190  
 Mike Nikolic, Ill., SX190, Zenith  
 Richard B. Odlin, Wash., R4B w/A20  
 Bob Padula, AUSTRALIA, CR-100  
 Pat Patterson, GA, SX99  
 Ralph Perry, Ill., SX100  
 Jim Ronda, Ohio, SW4A + A20  
 George Schnabel, NY, SW4 + A20  
 Harold Sellers, Ont., Trio 9R-59D  
 Woody Seymour, Jr., NC, SX190  
 Ed Shaw, VA, SX190  
 Bill Sparks, CA, R4B + PCLP  
 Steven Sykes, Ohio, SX190  
 Walt Triala, PA, SPR4  
 David Whaley, CA, SW4A, DX150A  
 Craig Wicks, MS, DX150A  
 Jim Young, CA, HQ180, HQ100  
 Robert Zilmer, Wis., SPR4

XXXX = Ed Shaw, Russel Lay, Martin Imbert, & Dan Ferguson, located in S.W. Va. one weekend in Mid-November. Receivers used were SX190, DX150a, HQ180A, and an SB310.

MCDXA = Mountain Creek DX Association; the members are Ed Shaw & Dan Ferguson. All loggings credited to MCDXA were made during the December convention at the Mountain Creek DX Resort. Dates were 18-21 December. Receivers used were the SX190 & R388/URR. At this time it is not known if there will be a January convention of MCDXA, since the supply of wood (used for heating) was almost completely exhausted at the December convention!

\*\*\*\*\*  
 Remember that all reports to the LOG REPORT section should be mailed to the NASWA HDQ address, P.O. Box 8452, S. Charleston, W. Va. 25303 USA.

-----  
 Charlie L. :

Roses are red,  
 Fall leaves raw sienna,  
 You're mean to St. Nick,  
 You deserve bent antenna!

Diane Lévesque

-----  
 Those interested in contacting DXers in India might write R. Ram Mohan, Executive Secretary of the Universal DX Club in India, P.O. Box 32, Bangarapet-563 114, INDIA. 3 IRCs will get you a sample copy of their bulletin.

-----  
**MONGOLIA** Radio Ulan Bator broadcasts as follows:

1030-1100 St. Chinese MTh	11855, 7260, 5053
1030-1100 RR to USSR Tu	11855, 7260, 5053
1040-1100 RR to USSR Fri	11855, 7260, 5053
1220-1250 EE/SEA/FE(not Su)	17785, 19445, 8890
1300-1330 St. Chinese(ex. Mon)	5960, 4953
1330-1400 St. CC, not Mon	5960, 4953
1400-1430 Mongolian(not Mon)	5960, 4953
2200-2230 EE to SEA/FE(not Su)	11860, 9545

Reprinted by permission of the BBC Monitoring Service. NASWA cannot grant permission for further publication of this material.

-----  
 Charlie Loudenboomer advises those attempting to discover his identity that they should get the complete series of reports, every one since 1966! Available from HDQ for only \$2.50 ppd in NA.





73 in  
1973  
from us to  
YOU



COVER PHOTO Mrs June Palmer and  
Michael Hobbs, English Service  
Announcers for Radio RSA.

Return to:  
NASWA  
P.O. Box 8452  
So. Charleston,  
West Virginia 25303  
U. S. A.



**FIRST CLASS MAIL**