

# FRIENDS

The SHORT WAVE BROADCAST Journal - Since 1962

NORTH AMERICAN SHORT WAVE ASSOCIATION  
P.O. BOX 989 ALTOONA, PA. 16603



June 1972

Annual membership fee \$10.00 with twelve monthly bulletins via first-class mail in continental U.S., via seairmail overseas. Airmail rates available on request.

NASWA Officers and Editors

Executive Editor	William P. Eddings
Bulletin Publisher	Daniel C. Ferguson
Board of Directors	Gregg A. Calkin Gerry L. Dexter Daniel C. Ferguson
Corresponding Secretary	Edward C. Shaw
Executive Advisor	Donald N. Jensen
Technical Advisor	Al R. Niblack
Shortwave Center Editor	Ralph W. Perry
Listener's Notebook Editor	Daniel C. Ferguson
QSL Report Editor	Gregg A. Calkin
Log Report Editor	Lawrence Magne
Flashsheet Editor	Al R. Niblack

\* \* \* \* \*

A NOTE FROM THE BULLETIN PUBLISHER...All membership renewals should be sent to the headquarters address: NASWA, P.O. Box 989, Altoona, PA 16603, USA. Thanks.

COVER PHOTO this month is of the English-American group of Radio Sweden. From left to right: Stanley Bloom, George Varcoe, Kim Loughran (foreground), Claude Stephenson, Harry MacGregor, David Noble and Al Simon.

NEW MEMBERS, WELCOME!!

Craig A. Wicks, Grand Rapids, Michigan.  
Via PE Communications Handbook.  
John P. Giles, San Antonio, Texas. Via  
Communications World.  
Joseph L. Helm, Ondon, Indiana. Via Commu-  
nications World.  
Alan Hamilton, Ottawa, Ontario. Via 1972  
World Radio-TV Handbook.  
Dave Megyesey, Trenton, New Jersey. Via  
Communications World.  
Tom J. Noll, Grand Forks, North Dakota. Via  
Elementary Electronics.  
Charles E. Mueller, Opa Locka, Florida. Via  
Communications World.  
Donald J. Glover, Pittsburgh, Pennsylvania.  
Via Communications World.  
James R. Tasker, Johnstown, Pennsylvania.  
Via Communications World.  
Larry Flegle, Tampa, Florida. Via Ed Shaw-  
NASWA Corresponding Secretary.  
W. Keith Russell, Champaign, Illinois. Via  
Communications World.  
F. Martin Austin, Wethersfield, Conn. Via  
a friend who works at Radio Shack.  
Jeffrey Dubin, Philadelphia, Pennsylvania.  
Via NASWA Headquarters.  
F. William Black, Aurora, Colorado. Via  
Communications Handbook.

RENEWALS

Second Year- Ed Insinger, Robert Levine,  
Harry Duer, John Burns, Sheldon Chatlin,  
Walt Trkula, Jerry Reichman, Richard Clawson.  
Third Year- Larry Johnson, Jr.  
Fourth year- Ralph Perry, Ed Kusalik.  
Fifth Year- Chris Lobdell, H. Price Kagey.  
Sixth Year- Edward Shaw.  
Seventh year- Edward J. Pyatt, Art Poulis.

NOTE: Members joining or renewing after the  
15th of month will be listed in next month's  
edition of bulletin.

AWARDS ISSUED

Warren Nordgren, NASWA AWARDS Chairman, has  
submitted following list of members who have  
earned NASWA awards/certificates:

Elmer Johnson, Worldwide DXer (50 countries)  
Larry Marshall, WorldWide DXer (50 countries)  
Cornelius Webb, WorldWide DXer (50 countries)  
John Hedstrom, WorldWide DXer (50 countries)  
Ronald Howard, WorldWide DXer (100 countries)  
Ronald Howard, Missionary Station Award (12  
different stations.)  
Alvin Sizer, Continental DXPert (50 African  
countries)

Awards continued.....

Dan Henderson, Continental DXPert (50  
African countries), Continental DXer  
Award (8 Oceania countries), Continen-  
tal DXer (13 NA stations), Continental  
DXer (40 Asian countries).  
Stephen Dildine Jr. Continental DXer  
(28 European countries.)

A NEW ADDITION TO FRENDX

Beginning this month our Corresponding  
Secretary, Ed Shaw, will edit a new  
column/section dealing with mail from  
members who have questions to ask, or  
comments to make regarding subjects  
dealing with the club or hobby. Not all  
may be able to be answered each month,  
but will be dealt with on first come  
first serve basis, and of course, de-  
pending on the importance it is consid-  
ered. The continuance of the column will,  
of course, depend on the support given it.

OFFSET POPULAR!

A year or so ago, NRC was the first major  
club to switch from mimeo to offset...  
Then came the new SPEDX organization  
followed by NASWA. We now hear that the  
ASWLC has plans to convert also. This  
would leave the only other major DX clubs  
in NA not going offset, the IRCA and the  
NNRC, the latter being the oldest and  
largest of all. Incidentally, NASWA hopes  
to improve quality as we gain experience.  
Your support will help!

NEW MEMBER PACKETS

There are a number of recent new members  
who did not get the "packet" that is sent  
to all upon joining. Since the list has  
been misplaced during switchover in pub-  
lisher & QTH, if you happen to have been  
on it, simply send post card to HDQs and  
we will try to rectify the matter.

\*\*\*\*\*

Still no supply of club rubber stamps, but  
we are a persistent lot & expect action in  
the not too distant future. Ed Shaw has  
club stationary, though. You can get a  
supply by remitting \$1.75 (1st class svc)  
to him at 621 Burlleigh Avenue, Norfolk,  
VA. 23505. Make checks payable to him.

\*\*\*\*\*

Kindly remember, we no longer have 3rd-  
class mailing of bulletins..Members  
renewing must remit \$10.00 first class  
fee.

\*\*\*\*\*

Thanks & congrats to Larry Magne for his  
1st go as LR editor!! Excellent job!!

THE LOUDENBOOMER REPORT

"What ever happened to the field day?" I asked my buddy, George one day.

"What's a field day," he queries.

"A field day, old friend," I replied, "once was a DX'ing institution. Once a year or so, SWLs would cart about a ton of gear out in the wilderness somewhere, a mountain top, a leafy glade or what have you, and set up shop for a day of open air DX'ing."

"Sounds like fun," George replied.

"'Twas," said I, "Roughin' it with a receiver, stringing temporary longwires amongst the trees, getting away from it all, especially city QRM, for the day. But nobody seems to do it any more."

As I'd hoped, ol' Geo jumped at the idea.

"Why don't we do it," he enthused, "I'll take along my brand new South African Hardley-Worthit XC-30. Don't need an ac power source for that."

"Great! And I'll bring Uncas."

"Uncas," George returned, "What -- or who -- is Uncas?"

"Ah, my good man, I thought you'd never ask. You know, my aging Heathkit portable...the last of the Mohicans!!"

A long groan from George hung in the air as he walked out the door and down the sidewalk toward home.

So the plans were made and the next Saturday, George and I, toting a hundred pounds of gear on our backs, set off on foot for our field day site, the rounded crest of Big Bob Hill.

Struggling upward for an hour and a half we finally reached the top, nearly exhausted by our efforts. But after a brief rest, we began to set up camp.

The umbrella tent we'd brought along was set up, but not without some trials and tribulations. I managed to smash my thumb with a rock, trying to drive in a tent stake. George put his foot through the side of the tent, ripping a 3 foot flap, as we struggled to get it in place.

But, George always sees a bright side to everything.

"Now we can run the lead-ins through the hole," he noted.

The folding table and camp chairs were set up and the receivers put in place. Sleeping bags were unrolled and our food supplies were stashed in a corner. The next project was the antennas.

The long wire was relatively easy. The rhombic a bit harder. Up a tree went nimble George.

"George of the Jungle!" I shouted.

Down the tree came nimble George! The limb on which he'd been perched crashed to the ground. Behind it came George, swinging like Tarzan from the end of a length of braided copper wire.

With my companion resting his sprained back, I finished the antenna installation myself.

As darkness fell, our woodsy supper finished, we got ready for some serious field day DX'ing.

As I was firing up the rigs, George peered out the tent window at the deepening night.

"What are those three red lights over there?" he asked.

"Flying saucers?" I hazzarded.

Hrumphing scornfully, he hobbled out to take a look.

Meanwhile, I began spinning the XC-30's dials. But wherever I tuned, all I could find was one powerful, over-modulated signal...chicken rock music and an inane announcer shrieking about "Wonderful WYNO RADIO, the big 1540."

I was puzzling over this omni-present QRM, when George limped back into the tent.

"Well I found what those lights are," he snorted. "Charlie, you yo-yo, you picked a field day site just 50 feet from the base of the local ECB'er transmitting tower!"

....Charlie Loudenboomer

Deadline: 15th of the month

# MAIL CALL

Edward C. Shaw  
621 Burleigh Avenue  
Norfolk, Virginia 23505

LETTERS TO THE CORRESPONDING SECRETARY

\*\*\*\*\*

Welcome to the MAIL CALL - a section we hope will be of interest and assistance to all - particularly the beginning or part-time SWler desiring more information than he has been able to dig up before. Many of you have asked for it, so we'll try it out.

The NASWA membership is invited to drop me a line with questions, problems, and any suggestions. And, if they are of wide interest, we will use your item for the MAIL CALL. In any case, for your return stamped envelope I will send an immediate reply. Please continue to support your other sections in FRENEX as well. Questions about your personal membership should go to HDQ. But, now for MAIL CALL! - Ed Shaw

\*\*\*\*\*

Dear Ed: How can I find the addresses for the Naval Time Stations at Canal Zone and Guam? Do these count on the NASWA Country List?

Answer: You bet your boots they count! At present there is no other way to QSL these two counting countries. Address your reports to: Communications Officer, Radio Station NBA, FPO New York, N.Y. 09580 (for Canal Zone) or, Communications Officer, Radio Station NFN, FPO San Francisco, CA 96630 (for Guam).

Dear Ed: I saw where you employed extra crystals in your SX-190 to provide added coverage down to 3.0 MHz. Where did you order such crystals? Allied Radio Shack at my town says this is not possible through them.

Answer: Your Allied store is mistaken. They could have ordered whatever crystal you desired, but I understand there is some considerable delay at present with Allied's source of crystals. I ordered mine from International Crystal Manufacturing Co. (Attn: Mr. Gene Welch), 10 North Lee, Oklahoma City, OK. 73102. My 90 meter crystal was cut for 5,720 KHz which provided me 3,000 to 3,500 KHz coverage. I put this crystal in the lower blank option space and connected a 700 mmfd capacitor per directions from the manual. It works fine! Incidentally, if you order from Int'l, it's cheaper!

Dear Ed: I'd like to see some sort of concerted effort to help the beginner. Much of what we find in FRENEX is very technical and presupposes familiarity with the many abbreviations and terms found in the various sections.

Answer: A point well-taken! But, there IS help available. Your WRTM read through provides much good information. Other books are also available at nominal fees: How To Listen to the World, and Shortwave Voices of the World are excellent works available from GILFER Associates, P.O. Box 239, Park Ridge, New Jersey, 07656. Write for their brochure. Also, the ANARC Abbreviations List is available at \$1.50 from: ANARC Abbreviations List, 16182 Ballad Lane, Huntington Beach, California, 92647. And, finally, any member is certainly welcome to address his question or problem to me at the top address. Don't forget to include stamp for reply. More on next page.

HAVE YOU MADE YOUR PLANS FOR THE ANARC CONVENTION? SEE DETAILS IN FRENEX JOURNALS!

Dear Ed: My receiver is located upstairs where I have connected a fair length of antenna , and also a ground wire running from the receiver's ground terminal to a cold water pipe in my upstairs bathroom. When I disconnect my antenna, I still get pretty good reception - what gives?

Answer: Ha - not long ago in FRENEX, Dr. R.E. Wood advised us that this very thing was likely to occur when employing unusually long ground wires. Grounds should be installed in as abbreviated method as possible. Long, meandering wires leading from your receiver - no matter if it is the ground terminal - act as an antenna. Indeed, some antenna designs call for grounding of the furthest end of the principal to gain directivity. Try to install your receiver close to the window, and connect a heavy gauge ground wire directly to a deeply driven ground rod made for the purpose. The secret is to keep your ground connection as short as possible and as heavy a gauge as is practicable.

-----

Dear Ed: I have two receivers, one a tube-type R-195 made by Allied Knight Kit, and the other is a solid-state DX-120 by Realistic. I like both receivers, but the former hums and latter hisses when the volumes are turned up. How can I get rid of the noise?

Answer: Solid state equipment has the inherent problem of hissing noise you describe at higher volume. Perhaps some filtering is possible, and I ask that you direct this question to Al Miblack at his Flash Sheet address. As for your R-195 hum, I suspect that your power rectifier may be going bad. This is easily remedied by a qualified technician - and while you are at it, I would question the technician about the feasibility of a full-wave rectifier which will eliminate any 60 hertz hum problems.

-----

Dear Ed: Why can't I get a QSL from North Korea? I've written a number of reports to their station reporting their 15,150 KHz service to Latin America - to no avail.

Answer: This was a question best sent to Gregg Calkin's QSL Section, but since there may be others in the same boat, I will give one answer here. I too had the same problem until hit on the head with the obvious answer by my good friend Dan Henderson in Maryland. The North Korean broadcast is in Spanish for Latin America, therefore report in Spanish - & try to show some (ahem) interest in their programming. Spanish report forms are available from Gregg Calkin for 1 IRC at his QSL Report address.

-----

Dear Ed: While tuning across my receiver's various bands, I sometimes come across obvious commercial broadcasts on frequencies not listed in the WRTH or in FRENEX lists. Most notably, I have heard a Cuban station IDing as Radio Rebelde, just above WWV at about 5,250 KHz or so. My WRTH only shows them on AM. Is my receiver out of whack?

Answer: Well, I can't answer whether your receiver is out of whack or not, but you have definitely described that which other DXers have found regularly. You have experienced harmonic DXing. The frequency you heard was probably 5,310 KHz which is the 9th harmonic of 590 KHz on which Radio Rebelde operates. For a really keen insight into this odd-type of specialty, I suggest you drop a self-addressed and stamped envelope to Glenn Hauser, Box 62, Von Ormy, Texas 78073.

-----

And, here's hoping you will continue to write and ask questions. Warm 73 from.....

Uncle Ed Shaw

# Shortwave-Center!

Editor: "Ralphus" Perry  
1436 Bristol Ave.  
Westchester, IL 60153  
(...summer address)

Afterword:  
RADIO VILA, NEW HEBRIDES  
(An Inside Letter to NASWAers)

April 13, 1972



British Residency  
Vila New Hebrides

Dear Ralph and NASWA,

Many thanks for your letter of the 20th of March. I haven't yet received the copy of your club magazine, but mails to this place are a little uncertain, particularly when posted by surface mail. One learns to be pretty philosophical about these sorts of things here.

Regarding your request for a NASWA courtesy broadcast from Radio Vila, I'm afraid that at the moment I will have to turn you down. If you could see our facilities at the moment you would see why. The complete R. Vila complex measures a whole 11 x 30 feet, and this is so cluttered with equipment, records, and bodies it is almost unbelievable. We are now in the throes of reorganising, and in the next few weeks hope to move out to a temporary studio in a language lab recently built at the Secondary School in Vila.

Then we can start on the job of hauling out all our delapidated gear and putting in some of the new equipment which has either arrived or is on the way. Unfortunately, new buildings to go with it are not likely until next year, so it's going to be a case of making the best use of such limited space as we have, although we will be moving the

department into a vacant office next door.

Coupled with this I hope will be a review of our broadcasting hours, but since there are a total of four people, including technician, working full-time at the station, increasing hours is going to be a big strain until we get more people--- again, not too likely in the near future.

So as you can see, we are pushing our resources to the absolute limit now. However, there is the strong possibility that by this time next year we will have extended our on-the-air time to about 9.30 p.m. (or 10.30 GMT) on 3945 kHz, which may make it a bit easier for American DXers. 7260 kHz will remain our daytime frequency, although we are also looking at the possibility of putting on broadcasts before breakfast, e.g. 5.30-7.30a.m. (18.30-20.30 GMT). Again, it's largely dictated by lack of staff....

Whether or not I will see these changes is problematical.

You see, my volunteer assignment ends in 9 month's time and so far, I have not decided on where I go from here. I am sorry that the above is the only comfort I can offer you in your quest to pick up Radio Vila...With my best regards,

Yours sincerely,

John McNeil

(Broadcast Officer, R.Vila, New Hebrides)



## AFRO-DX

ODDS & ENDS: Radio Cote d'Ivoire transmits from Bingerville, situated some six miles from Abidjan, while the studios are in Abidjan....The ELEC transmissions cover the whole of Liberia and parts of the neighboring states, esp. Sierra Leone and Ivory Coast. There are over 500,000 known ELEC listeners (pop. 1.1 mil.), and 155,000 rx's in the country...A 60-second commercial ad over Radio Yaounde costs 7 francs at noon, while a comparable 30-second spot over RTV Chad runs 60 francs!!

GO FIRST CLASS -- GO NASWA: YOUR TICKET TO ALL THE EXCITEMENT OF SWBC!!!! NUMBER 1!



April 17th, 1972 marked my 25th year as a DXer. On that month and day back in 1947, I heard my first station, which, not surprisingly, was HCJB. A number of NASWA members have been in the hobby far longer than I, so this anniversary is probably of little interest to anyone but myself...But it did

prompt me to check old records and WRTH's from past years. Veteran DXers are fond of harking back to years gone by, frequently commenting on just how things have changed. Whether these changes have been, on the balance, for the better or for the worse, I will reserve that judgement for you.

Presently, the NASWA country list shows that a DXer in the hobby since 1945 could have theoretically logged some 220 different countries; that is, over the past 20-odd years, shortwave transmitters have existed in that many countries. And most of them remain. On the other hand, back in 1950, a convenient year for comparison since I've records dating back to then, and using the present NASWA country list as a standard, the maximum number of countries that could theoretically have been logged was 129!!!

According to the British publication, SW News, the top DXer in terms of VIC was then, as is now, Arthur Cushen of New Zealand -- w/just over 120 VIC. He was closely followed by a Britisher, Sydney Pearce. It took a minimum of 30 nations veried to make the list, compiled by the U.K. club, the ISWL. In terms of challenge and difficulty entailed, I would estimate that 30 countries QSLed back in 1950 would be roughly on a par with verifying 100 today.

Why? For one thing, station transmitter powers were considerably lower than they are today. But it cannot be forgotten, however, that the bands were significantly less crowded, with the resulting QRM less. Yet, in 1950, only 14 countries had SW trx's with powers of 100 kW's...and none had stations surpassing this level. An additional 10 nations had trx's with powers in the 50 to 100 kW range, altho most of these were 50 kWers. And eight more had stations running between 25 and 50 kW's. Thus, only 32 countries in all could have been logged if one only tuned those running transmitters of 25 or more kilowatts.

Here, for the purpose of illustration, are some selected countries and the strengths of each's most powerful shortwave xmtr, circa 1950: Albania- 3kW; Belgium- 5 kW; Poland- 7.5kW; Sweden- 12kW; Liberia- 500 watts; Kenya- 6kW; Madagascar- 1kW; Nigeria- 1kW; Reunion Is.- 100 watts; Iraq- 1kW; Saudi Arabia- 3kW; N.Caledonia- 500 watts.

#### THE HEATH DIGITAL

#### FQY COUNTER...

NASWAers will no doubt recall the very negative review given this unit in the 9/71 SWC by member John Walenter. This info per John Kolb, CA: "...it will probably work with most rx's of the Linear Master Oscillator type design (--SX190 or SPR4 or SB310, etc.) but check w/Heath before buying. I suspect, for example, that it wouldn't be usable w/the HQ180(w/out external circuitry) because of the four signals to be combined instead of three...more info later!" Perhaps this was the source of John W.'s troubles...

My own records may be illustrative of little or nothing, but for what it's worth, I'll cite a few examples. In my first 5 yrs of DXing, 1947-52, I veried 30 countries. It took 2 more, a total of 7 yrs, to reach the 70-country mark for QSLs. I verified my 100th in my 10th yr as an SWL. It took 12 yrs to hit 120, 14 to reach 140, and 16 to verify 160. I hit 175 in my 19th yr of listening, and pushed on to the 200-mark in my 22nd year as a DXer.

One thing has impressed me over all these years, though. Namely, the fact is that today's typical DXer is far more knowledgeable and sophisticated about the hobby than was his counterpart of 25 yrs ago. And for this, most of the credit must be given to fine DX clubs..Paramount of which is NASWA.

...NASWA's resident "pro", Don Jenson, Wisc.

REMEMBER: ANARC CONVENTION - JULY - BOSTON  
BE THERE!!!!

## SHORTWAVE

SHORTS.....Random Notes from the World of International Shortwave Broadcasting...

A Glimmer of Hope...Zanzibar QSLs

Recent political upheaval and a favorable Message rcvd by a NASWAer may indicate that RTZ QSLs may be just around the corner. Our DX-sharpshooter, Al Sizer, reports that a note has been received from Omar M. Omar noting that "...we can now get started on those verifications..." Right on, Omar!

Radio Brunei: 15 Years on SWEC

"...Radio Brunei was established in 1957, and is operated on a budget of some \$75,000(USA) from State funds. It does not resort to commercial advertising and is solely a public service..." G.V. de Freitas, Director. (direct to SWC)

A DXer and His Money are Soon Parted...

A look at some products for the DXer; remember Southwest Technical Products? Think back...right, the firm that used to supply components and pc boards for the projects in FE(old-time FE's, that is). A S.W.T.P. catalogue recently fell into my hands, and 2 items are worth noting: a 100 kHz Xtal Cal., for \$10.85 The unit is run off an IC, and your editor purchased one and highly endorses it. 2ndly, SWTP offers a digital-readout fgy counter kit, consisting of 2 kit modules (Nixie Readout + Pwr Supply, & plug in fgy-counter unit) and running \$61.90. Addr: S'west Tech. Prod. Corp., 219 W. Rhapsody, San Antonio, TX 78216.....  
.....DXer Gerry Dexter advises that yet another SWL book has hit the stands: entitled "The Fascinating World of Radio Communications", by Wayne Green (TAB Bk. #586). And we'll let YOU decide if it's worth \$3.95...for paperback...

DX-Entrepreneur...Mr. J.M. Frost

In a personal letter to NASWA, the WRTH editor noted that "...I shall with pleasure send you a short article for FRENDX about myself and the WRTH. Right now I am quite busy w/other things ("How to Listen..."), but will send my story soon." ---only in NASWA! Watch for it! -rwp-

Maldives: Scenario Via the (AP)

Condensed from an ASSOCIATED PRESS release of April 12th, 1972:

"Sitting alone in the Indian Ocean, the Maldives has blended the politics of Haiti and the physiogomy of Morocco with the society of Alice in Wonderland. There are no banks or bars. The only fire engine is on the wrong island, waiting at the deserted airstrip across the lagoon, in case the bimonthly charter from Ceylon crashes. 12,000 Maldivians live under strict Moslem code on Male, the 1/2 by 1 mile island capital, with another 100,000 spread over 2000 islands strewn across the Equator...

"Male is as flat as a flounder, with winding lanes, a few straight streets, tall minarets, and about 40 vehicles. Cluttered shops sell Burmese rice, Japanese watches, and English patent medicine from the same shelves...

"Men run the central market and occupy the cafes. Koranic law allows each man

4 wives and easy divorces, but times are changing, with 2000 youths in school overseas on scholarships.

"Despite the strict Moslem code, the government radio broadcasts an American Gospel program because it pays well. It also re-lays news from London, Sydney, Peking, and Paris."

via NASWAer

John D. Tuchsherer

All India Radio (AIR)...Some Statistics

As of Sept. of '71, AIR has some 213,000 persons on its mailing lists. A similar number had sent reports in during that year -- 219,451. How about one more? OK: The number of foreign broadcasting organizations receiving AIR programs for re-broadcast has risen to 127...

NASWA's FRENDX: not just "another pretty bulletin", but.....THE SWEC JOURNAL!!!!

NASWA EXCLUSIVE!

NASWA EXCLUSIVE!

The Swaziland Commercial Radio (Pty.) Ltd.

--- SWAZI RADIO ---

Without a doubt, the most prodigious news in shortwave broadcast circles in the past year, rivalled only by the birth of Radio Bangladesh, has been the emergence of a new voice on the shortwave bands, the literal creation of a new "radio country" for SWLs and DXers...I refer, of course, to Swazi Radio. Under the leadership of an international party of six (Mr. Mark L. Wodlinger, the chairman--an American; Mr. R.D. Friedlander, a South African; General J.P. Gous, a South African and a former commissioner of the South African Police; Mr. N. Kirsh, an indigeonous Swazi citizen; Mr. A.L. Gomes Lopes, Portuguese; and Mr. Nkosi, of Swazi extraction) Swazi Radio began broadcasting on February 1, 1972 to South Africa from the capital of the small land-locked country of Swaziland, Mbabane.

The following information was received directly from Mr. Wodlinger in Kansas City. Your editor has opted to not cannibalize and combine the various articles received in the dossier from Mr. Wodlinger, but rather to present two of the most interesting articles contained therein...therefore avoiding the omission of any pertinent information. The only picture of the Radio Swazi complex was, unfortunately, not suitable for reproduction because of its poor contrast. For further information on Swazi Radio, Mr. Wodlinger may be contacted at:

Swaziland Commercial Radio (Pty) Ltd., P.O. Box 385, Kansas City, MO. 64111 The address of the studio is: Radio Swazi, P.O. Box 911, Mbabane, Swaziland. However, all QSLs received thus far have come through a Miss Barbara Christenson, at the following address: SR, 11th Floor, Libertas Bld., Marshall Street, Johannesburg, South Africa, or P.O. Box 23022, Joubert Park, South Africa.....so take your pick! To my knowledge, all reports to the Mbabane address have been forwarded to the Joubert Park location.

"New Radio Station For SA Pop Fans",

Swazi Radio, a new commercial radio station based in Swaziland, is to beam 'pop' music to SA for 18 hours a day from Feb 1st. It will compete with the SABC's Springbok R and with Lourenco Marques R. General J.P. Gous, former Commissioner of the S. African Police, is a director of Swazi Radio.

General Gous told me that he became associated with the project when the manager offered him a directorship - "and I took it!"

Asked whether he had any hesitation about taking part in an enterprise that would compete with the SABC, he said: "I think there's enough business for the both of us".

He added that he felt the Swazi station would do "very well".

Mr. Peter McIntosh, SR's general manager, told me this week that the station would ensure that no objectionable mx was broadcast, but, unlike the SABC, would not censor pop music.

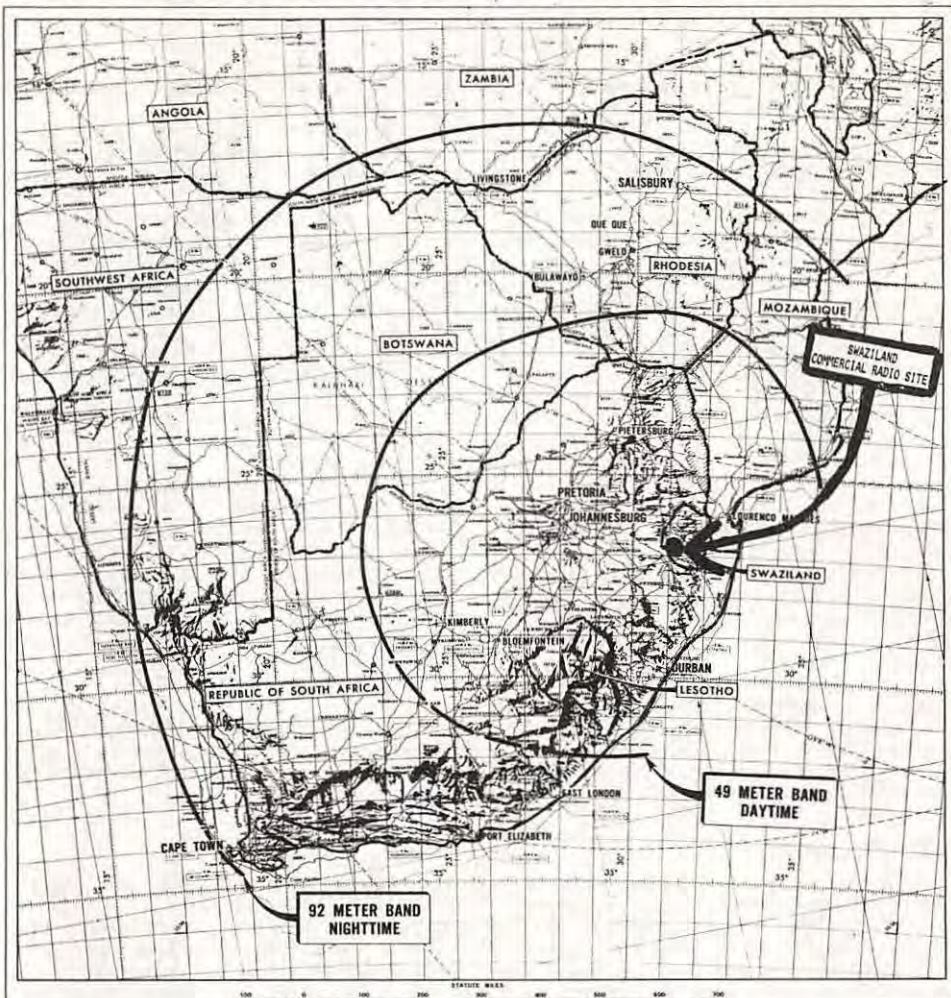
Already the station has booked more than R500,000 worth of advertising, and says Mr. McIntosh, "We haven't even started yet."

Swazi Radio will broadcast to S. Africa from a point barely 100 meters from the South African border, and by enlisting giant directional equipment will be able to reach almost every major city in the Republic.

DIRECTORS. Mr. McIntosh said his station would give listeners "very high quality reception."

Swazi Radio will be controlled by an American company based in Missouri, and initially only the voices of American disc jockeys will be heard. Therefore the programmes will not be bilingual. Mr. McIntosh said the company planned to use South African dj's later.

The Swazi nation holds 20% of the stock. In addition to Gen. Gous, the directors are Mrs. Natie Kirsh, a Swaziland property tycoon, Mr. Mark Wodlinger, the  
(continued on SWC - 6.....)



SWAZILAND COMMERCIAL RADIO (PTY) LIMITED  
 MBABANE, SWAZILAND  
 10,000 WATT-SHORTWAVE RADIO  
 300 uv/m CONTOURS

-- DEPICTED IS THE COVERAGE OF SWAZI RADIO'S --  
 --- SHORTWAVE SERVICES ---

---SWAZI RADIO ---  
(cont'd.)

American chairman of the company, Mr.R.D. Friedlander, Mr.AL Gomes Lopes, and Mr. M. Nkosi.

Mr.McIntosh estimated that it cost Swazi Radio R800,000 to establish the station.

The new station would compete with LM Radio and the SABC's commercial svc's. The SABC recently took over LM Radio, and so just at a time when it seemed that they had eradicated their main competitor, they will face a new competitor based a hundred miles closer to the Rand.

CAPE TOWN. The station will broadcast in the day in the 49 mb to ensure clear reception on the Rand and in Kimberley, Bloemfontein and Durban. However, said Mr.McIntosh, it would be at night that the station would come into its own when 500,000 watt MW transmitters would operate ensuring high intensity, city-grade reception.

"We are concerned about the reception quality in Cape Town, but we are prepared to build another transmitter beamed directly at the city if signal quality is not good enough."

Unlike LM Radio, Swazi Radio will be a fully automated service. Programmes will be taped in Johannesburg and transported to Swaziland. Although the station will be equipped for "on the spot" broadcasts, this will not be the usual practice and

only technicians will work on the Swaziland premises.

The new station will be on the air from six in the morning until midnight during weekdays, and from six until one in the morning on weekends.

From six until nine in the morn, a country and western programme will be broadcast. From nine until noon the programme will be called "Music only for a woman". From noon until three, pop mx will be on the air, and then until six the "Top 40 Songs" will be played.

NO NEWS. The evenings programmes will feature heavy pop sounds.

Mr.McIntosh said the station would provide "entertainment only". There will be no news service.

'This for two reasons,' McIntosh explained. 'It would involve enormous cost to establish a news service, and no matter how impartial we tried to be, someone would accuse us of bias.'

Government sources which could have commented on the official attitude towards the new station were silent, but I learned that the SABC is viewing the project with concern. --30--

.....by David Barritt  
(as published in a South African Newspaper; unfortunately, Mr.Wodlinger's photostat didn't include the publication's ID)

"Southern Sounds"

"Morning: the Tex Reed Show. Music Only for a Woman. Afternoon: the Jack Allen Show, Top 40. Evening: Night Sounds with Preston Wolfe, New Innovations.

"For South African listeners, an altogether new type of radio entertainment and a different system of programming were offered when Swazi Radio went into operation last week. It was the 1st time that South Africans were able to listen to pgms, beamed from just across the border, on which the voices of all the disc jockeys were American. Swazi Radio was the creation of American Mark Wodlinger, director of a company, Intermedia, which controls four radio stations and one TV network in Kansas City. The programmes on Swazi Radio will consist of entirely music at first, with features of general interest to be introduced later. Each of the programmes on SwR will be taped in the USA and flown to Johannesburg in "three hour blocks" and from there they will be dispatched to the station in Swaziland, near the South African border at Sandlane. No programmes will be recorded at the station, which needs only technicians to supervise it, and although Swazi Radio has studio facilities in Johannesburg, these will be used mainly to process the American tapes. The only South African accents on Swazi Radio will be on the commercials.

"The radio station has literally sprouted out of nothing: all that existed of it four months ago was the strip of ground near Sandlane. Wodlinger chose the site because it is the same distance from both Johannesburg and Durban, the two audience centers

SWAZI RADIO  
(cont'd.)

where he hopes to gain most of his listeners. The equipment began arriving from the USA in October: one short and one medium wave transmitter, recording equipment, and giant 60 meter masts shipped in six meter sections. Wodlinger persuaded Steve Bell, one of the Intermedia disc jockeys, to supervise the musical arrangements on Swazi Radio. Bell, who broadcasts under the alias Preston Wolfe, chose the most up-to-date sounds he could find. He told TO THE POINT's Ronald Scoot: "I went for the Tex Reed Show for its presentation of country and western music, Jack Allen for contemporary light pop music, and Robert Walker for the heavy rock sounds of the Top 40. Music Only For A Woman brings soft, romantic sounds for housewives who are not interested in soap operas. In my own programme I will put the accent on live performances of the big bands. But I think the New Innovations will be the most interesting for the younger South African listeners: it will feature progressive rock, widely popular and extensively played in the USA but not as frequently heard, I gather, in S.Africa."

"Mark Wodlinger brought to Swazi Radio the experience he gained in almost 30 years as a radio operator and financier in the US. He qualified as a bacteriologist before joining the US Naval Air Corps in World War II, when his work on radar stations awakened his interest in radio. After he was demobilised he started building and operating radio stations in Kansas City.

"The idea of Swazi Radio came while he was on an educational tour of SA, sponsored by the Republic's Dept. of Information. From the start the project was viewed with unease by the directors of the SABC in Johannesburg. "I had to assure them that Swazi Radio would broadcast only musical entertainment and would not be used for propagandistic purposes," says Wodlinger, who is running the station purely as a financial venture. He has already sold \$650,000 worth of advertising time, almost recouping the \$780,000 cost of setting up the station. Although Swazi Radio will draw listeners away from the SABC's programmes, it will not deprive the Corporation of advertising revenue, Wodlinger claims. He points out that there is such a demand for commercial spots on the five stations falling under the SABC that many S.African companies find it impossible to book time even six months ahead. "If another ten stations were to be established in South Africa, the SABC would still not lose out on advertising revenue. South Africa, indeed, has an astonishingly small number of stations, five of them for a population of 20 million...compared with Kansas City, for example, where 22 stations cater to 750,000 listeners," noted Wodlinger.

"Wodlinger is not perturbed by the legislation which will be tabled during the current session of the South African Parliament. State President Jim Fouché gave notice in his opening speech which opened Parliament last month of a bill prohibiting participation in the activities of radio stations which are hostile to South Africa. Wodlinger does not believe the law will be applied to Swazi Radio. "I cannot foresee the South African government taking action against a commercial undertaking in Swaziland, seeing that the Republic pursues a 'good neighbors' policy towards the ex-protectorate." Wodlinger refers to the board of directors of Swazi Radio as further evidence that his intentions are anything but hostile. Among the directors are Gen. J. Gous, former Commissioner of the S.African police, and Gomes Lopes, head of internal security in Mozambique."

---from 12 February 1972 edition, TO THE POINT



**ALL INDIA RADIO**

=====

**"INDIA ENDS PLAYING ANTHEM ON RADIO":** New Delhi, Apr.22,(AP)-

"India's government-owned radio has stopped playing the national anthem (Isdaha Gana Mana) at signoff since Mrs.Gandhi thinks people getting ready for bed cannot show the proper respect.

"Informants said it was felt that when AIR's 68 stations sign off at midnight, listeners are relaxing and preparing for bed...and "are not in a position to give proper respect to the anthem."

---Chi Tribune, 4/23/72, via Gerry Dexter

PHENOMENON OF THE DARKNESS PATTERN --- EXPLAINED (Part.III)... by Ed Shaw (Conventioneire)

By this time, the reader should have made notes of the cardinal rules to observe when considering propagational probabilities. To recap, the rules are:

1. Low frequency transmissions will only propagate between two points in darkness
2. Exact GMT for any longitude on the globe may be easily figured by adding 4 minutes of time for each degree West of 0° Greenwich, or subtracting the extra time for longitudes East of 0° Greenwich. As I described it in Part I, my QTH in Norfolk, Va. at 76° West of Greenwich equals 5 hours and 4 minutes (76° x 4 Mins.) which I must add to my local sunrise and sunset times to obtain exact GMT. The same process is figured for your target trx location.
3. The accompanying chart tells when sunrise or sunset will occur within a few minutes (local times) for most latitudes. Nearly exact estimates may be interpolated for latitudes between those listed.

\*\*\*\*\*

RECEPTION OF TRANSMISSIONS BELOW 7,000 kHz

Reception unlikely after...		Reception unlikely after...	
LAT.°	SUNRISE (Local Hour)*	SUNSET (Local Hour)*	
60	0240 0253 0312 0335	2126 2116 2059 2037	
58	0300 0312 0328 0348	2106 2058 2043 2024	
56	0317 0327 0342 0359	2050 2043 2030 2012	N
54	0331 0340 0353 0409	2036 2030 2018 2003	
52	0343 0352 0403 0418	2024 2018 2008 1954	O
50	0354 0402 0413 0426	2013 2008 1959 1946	
45	0416 0423 0432 0442	1951 1947 1940 1930	R
40	0434 0440 0447 0456	1933 1930 1925 1916	
35	0449 0454 0500 0507	1918 1916 1912 1905	T
30	0502 0506 0511 0517	1905 1904 1901 1855	
20	0524 0527 0531 0534	1843 1843 1842 1838	H
10	0542 0545 0547 0549	1825 1825 1825 1823	
0	0600 0602 0603 0603	1807 1809 1810 1810	-----equator-----
10	0617 0618 0618 0617	1750 1753 1755 1757	
20	0636 0636 0634 0631	1732 1735 1739 1742	S
30	0657 0656 0653 0647	1711 1715 1721 1726	
35	0709 0707 0703 0657	1659 1703 1710 1717	O
40	0722 0721 0715 0707	1644 1650 1658 1706	
45	0739 0736 0730 0720	1628 1634 1643 1654	U
50	0800 0756 0747 0735	1608 1615 1626 1638	
	<u>6/30 7/10 7/20 7/30</u>	<u>6/30 7/10 7/20 7/30</u>	T



(\*) -- Must add Sidereal Time difference for your longitude to this figure

EXAMPLE Configurations for 20 July '72 between

Calgary, Alberta 111°W 51°N and  
Montevideo, Urug. 56°W 35°S

a. Calgary: 111°W x 4mins. equals 07 hrs 36 mins Sid. Time difference added to:  
51°N local sunrise (approx 0408) = 1144 GMT  
51°N local sunset (approx 2003) = 0339 GMT

b. Montevideo: 56°W x 4mins. equals 03 hrs 44 mins Sid. Time difference added to:  
35°S local sunrise (0703) = 1047 GMT  
35°S local sunset (1710) = 2049 GMT

From the above, we may deduce that when a DXer in Calgary desires Montevideo, he must try not later than 1047 GMT and no earlier than 2003 GMT - for there is no darkness between otherwise. Questions welcomed to Ed Shaw, 621 Burlleigh Ave, Norfolk, Va. 23505

LATIN-DX:

SISTEMA EDUCATIVO RADIOFONICO (S.E.R. DE MEXICO)  
 ...and one of the educational network's affiliates,  
ESCUELAS RADIOFONICAS DE HUAYACOCOTLA -- XEJNOC (2390 kHz)  
VERACRUZ, MEXICO

A station was born, the Educational Radio of Huayacocotla, when in 1964 the Iberoamericana University in Mexico brought together the necessary agencies before the Secretary of Public Education and the Secretary of Communication and Transport. Permission was granted to the University to impart fundamental education to native rural communities, and to operate a cultural station on the assigned frequency of 2,390 kHz, with a call of XEJNOC.

XEJNOC, Escuelas Radiofonicas de Huayacocotla (or, the Radio School of Huayacocotla) is not a widely heard DX station. The XEJNOC station complex is located at the mountain range near Huayacocotla in Veracruz. It presently uses a Gates transmitter, and also a Grabadara and a Tarnais<sup>®</sup>s, and receives all the necessary power from a special generating plant nearby.

XEJNOC experienced some problems from the very beginning. Among others, at first, the initial antenna and equipment wasn't equal to the task, being deficient in range for the area being served. And secondly, it was found that major difficulties arose from the very numerous dialects spoken in the area---programming was hard to find which would suit all the different ethnicities.

Problems notwithstanding, the success of XEJNOC spurred the development of an educational radio network for rural areas, christened "The Educational Radio Network of Mexico", or, "S.E.R. de Mexico" for short. Within this legal system of stations, XEJNOC has come to be known as SERHUAYA, a combination of the net's name and XEJNOC's QTH.

The first and foremost objective of the S.E.R. is to contribute to the integral human development in the rural zones and to foment their social and community development. The S.E.R. seeks to cultivate comprehension, mutual appreciation, and respect for differing opinions in the rural communities, and to instill within each listener a sense of community purpose. It is S.E.R.'s hope to foster integration of the diverse rural ethnicities.

The programming of S.E.R. stations includes what is termed "Fundamental Education": Reading skills, Arithmetic, Agricultural skills, History, Geography, and some useful Economic notions. In addition to these Spanish transmissions, the S.E.R. also sends out field workers who operate at the grass-roots level, encouraging self-help in development. For example, each village is encouraged to build a community school, utilizing solely materials at hand and the labor of one's fellows.

The area in which the S.E.R. operates encompasses 176,644 sq. km., and a population of 8 million. The states of Tamaulipas, San Luis Potosi, Michoacan, Quertaro, Hidalgo, Veracruz, the state of Mexico, Tlaxcala, and Puebla are included in S.E.R.'s domain. Naha, Otomie, and Totonaca peoples predominate in this region.

The results of S.E.R.'s work have been gratifying: there have been over 2000 graduates of the "Escuelas Radiofonicas", and many basic buildings, otherwise impossible, have been erected in rural areas. Further info can be obtained at the main office of S.E.R. at: Zaragoza 78, Apt. 21-970, Coyocan, Mexico 21, D.F., MEXICO.

..via DX-Ace Gerry L. Dexter, Wisc.



Emisora XEJNOC, "Serhuaya"

BROWNOUT '72

.....by Bob Peritz

Ah yes, those long cold days of Winter are all but a fond memory now. Soon the sun will be shining & the DXer who has been trapped inside by snowdrifts will be heading for the great outdoors. However, Summer also means brownouts!

For the city DXer like myself, Summer has always been a matter of touch and go as far as the power company is concerned. Last year in New York, we had many power cutbacks and a few major shortages. This Summer hardly looks better. It is at times like this that the DXer really appreciates those few extra dollars he'd spent in purchasing an AC/DC rig...

So, as the air conditioner grinds to a halt and your TV picture slowly shrinks into the sunset, at least you will have your trusty rig to turn to. A mere flip of the switch those signals in with nary a word of dialogue missed.

Most rigs, if not equipped by the factory with battery compartments, can be easily modified via various kits supplied by the manufacturers. Some radios even have provisions that keep batteries charging even when one is using AC -- handy!! An AC/DC rig has several advantages in addition to working during brownouts. If you are the outdoors type, when vacation rolls around and you find yourself out

out in the boondocks, just flip the switch and VOILA, heavenly DX! Many rx's also have provision for hookup to car or camper batteries. The advantages in owning an AC/DC receiver are unlimited. In light of all this warm weather ahead of it, it is certainly a point to consider if you are in the market for that new or second rig. In times like these, when a guy just can't rely on the power company to supply the juice, it is a true comfort to know that a DXer can look Con Ed in the eye and laugh!

--30--

YOUR  
DX - CALENDAR!

## June:

- 22-Congo(Braz): Army Day
- Haiti: Oath of the Pres.
- 23-Lux'b'g: Nat. Holiday
- Sweden: Midsummer's Eve
- 26-Malagasy: Ind. Day
- Somalia: Ind. Day
- 30-Libya: Withdrawal of Foreign Troops Day
- Zaire: Indep. Day
- Guat: Anniv. of Revol.

## July:

- 5-Algeria: Indep. Day
- Lesotho: Family Day
- Venez: Nat. Holiday
- Zambia: Heroes Day
- 6-Malawi: Republic Day
- Sarawak: Gov'nor's B-Day
- Zambia: Unity Day
- 7-Fern.Poo: National Day
- Tanzania: Saba Saba
- 12-Rhodesia: Rhodes' Day
- 13-Rhodesia: Founders Day
- Swaziland: Reed Dance Day
- Monaco: Nat. Holiday
- 13th(afternoon) and 14th:
- France, Fr.Guiana, Afars & Issas: Bastille Day
- 14-Senegal: Commonwealth Day
- Iraq: Republic Day

Economy of Wattage Dept: VAC/QRP TOTALS

Well gang, here we go again! For the uninitiated, a 'vackk-kwerp' total is simply NASWA's own lil "un-contest" consisting of members' listings of 6 stations which've been logged and verified, representing North & South America, Asia, Africa, Oceania, and Europe. The critical issue is this: HOW LOW CAN YOU GO ??? (..in terms of total power!)

This month's entry was contributed by DXer Gerry Dexter of Lake Geneva:

ASIA-----	R.Chusus Pemerintah Daerah		
	Kabupaten, Poso; 5273 kHz.....	250	watts
OCEANIA----	SIBS, Honiara; 5960 kHz.....	100	watts
N.AMERICA---	CKFX, Vancouver; 6080 kHz.....	10	watts
S.AMERICA---	R.Centinel del Sur,		
	Ecuador; 6250 kHz.....	200	watts
EUROPE-----	R.Renascenca, Port; 6154 kHz....	500	watts
AFRICA-----	R.Clube Mindelo, Cape Verde		
	Islands; 4720 kHz.....	450	watts
	<u>TOTAL:</u>	1510	watts

Nice going, Gerry!

And how about it, all the rest of you, my fellow NASWAers ?? I'd like to run YOUR totals ...Next month????

FRENDX!!! THE SHORTWAVE BROADCAST JOURNAL!!!

A PICTORIAL ESSAY:The Deutsche Welle Relay at Kigali

In 1963, the 1st DW relay station was put into test operation w/ 0.5 KW. In 1965, a 250 kWer replaced this, and also installed was a directional antenna system, consisting of 2 curtains separated by a set of two-band quadrant antennas.

The Deutsche Welle relay at Kigali represents the easiest opportunity for the new DXer to log and QSL the African nation of Rwanda.

Programming is fed to Kigali via a trx at Bockhagen, through a rhombic antenna oriented toward Kigali. The receiving station at Kigali works unattended; the receivers (equipped w/SSB and telegraphy modes) are also used in conjunction w/ rhombic antenna arrays.

PICTURED:

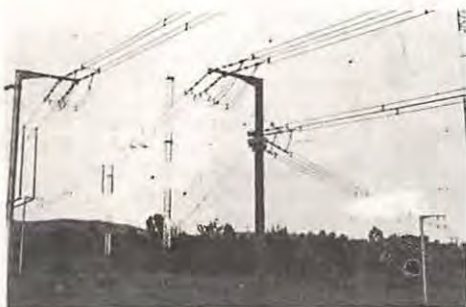
- (a) Construction of Kigali antenna  
 (b) Kigali quadrant system  
 (c) Transmitter control center  
 (d) Infinite loop - IS tape  
 (e) Transmitter Hall, Kigali



(a)



(c)



(b)



(d)



(e)



THE  
OPEN

MIKE..... Ideas, Comments, and Opinions from NASWAers.

"Skip" Fair, Houston, Tx.: "...I have a loop antenna hung on the ceiling for ECB and it really works great! Believe me, that directionality and sharp tuning "Q" is fantastic for ECB work. I've been doing some work on trying to adapt that basic design for an antenna that'll work at SW frequencies, but so far, no luck. It seems that by just changing the number of turns on the coil it should work, but when you do that, you cut the radiating area and drop the sensitivity to an unsatisfactory level. I did notice in last month's issue of "Ham Radio" that dealt with transmitting loops an article on loops for ham band frys, and some of the ideas in it might be adaptable to SWEC bands, too..." --- You're on a really hot item, Skip! Can any NASWAers offer ideas and advice on this? A high-Q, directional (possibly rotor-driven) loop for SWEC-DXing could be THE hobby breakthrough of the decade!

Harry A. Dyer, Ontario: "I was very interested to read Ed Shaw's article about the Barlow-Wadley XCR-30 rx in the April FRIENDX...Having lived in S.Africa for over 6 years and being well acquainted with the business integrity of S.African trade and industry, I had no hesitation in ordering the XCR-30. (By the way, the Barlow Mfg.Co. is an old established and highly reputable firm.) The radio arrived here in good condition, very speedily, and I've had it in constant use since last November. I am not only amazed at the results of this set, but I am also equally pleased that it will do everything that the manufacturers claimed for it. Their promises, like their radio, is free of any gimmicks or hard sell. The ease of tuning and true portability have more than doubled my listening time and pleasure. May I assure my fellow members that this is a first class rig, well and ruggedly built, and that it will undoubtedly prove a boon to all shortwave listeners throughout the world."

Oliver "Perry" Ferrell (of Gilfer Assoc.), New Jersey: "...Barlow has made some engineering changes in the XCR-30, mostly for the better, but then again, the last unit in had a defect...Of course, I must admit that the idea behind the XCR-30 is tremendous and I foresee the possibility of putting the same direct-fry readout scheme into a full-fledged communications-style receiver. Some of the measurements made here in regard to sensitivity, selectivity, etc. are very impressive. The Barlow will run circles around either the Sony portables or the Panasonic RF-5000A...Unless something goes amiss, I expect to have receivers at the ANARC meet in Boston."

WARNING:  
DXING MAY BE HAZARDOUS TO YOUR  
SENSE OF HUMOR!

Hard to believe? Steve d'Adolf sends in this item to SWC head-ctrs: "384,912 Years in Jail": PALMA DE MALLORCA (UPT)-"The Palma court prosecutor has demanded 384,912 yrs in jail for postman Gabriel March Granados for allegedly failing to deliver the mail. He got tired of trying, and instead opened the letters himself and removed anything of value." Quips our SPD, "Anybody got a report out to this island?" Aargh,Stevie!!

NASWA --- #1

HOAX! THE GILFER A-20!!

Yes, friends, it seems that the much-acclaimed Gilfer A-20 PreSelector is one of the biggest hoaxes in DX-history! I have mine hooked up w/ an antiquated single-conversion S-85, and, unbelievably, the old S-85 thinks it's an HQ-180!! (hi). In all seriousness, to repeat the claims of last month's SWC, the A-20 is superior: w/my rx, I've gotten appreciable gains all through the 3 to 18 MHz region (using the special LF model). But even more important, and in answer to previous conjecture, the A-20 is magnificently efficient in dealing with those unwanted images. Gilfer, Tnx! This type of "hoax" has been a long time coming!

...and so wraps up another SWC. Tnx to all my valiant contributors!  
Till next month,  
My 73s'iest.....

*Egulus =*

# QSL REPORT

Gregg A. Calkin  
Rio Balsas 35-702  
Colonia Cuauhtemoc  
México 5, D.F. MEXICO

Deadline: 12th-USE AIRMAIL

## SCOREBOARD

Our featured continent this month is OCEANIA. The next Scoreboard will appear in the September QSL REPORT when the spotlight will fall on SOUTH AMERICA Latins. If your name does not appear in the listing, why not calculate your totals and send them in before the September issue. Remember that HIC = Countries Heard, VIC = Countries Verified, HIS = Stations Heard and VIS = Stations Verified.

N°. Name/Location	HIC VIC		HIS VIS		OCEANIA		Prized QSL/Freq.
	HIC	VIC	HIS	VIS	HIC	VIC	
1. Don Jensen, Wisconsin	203	200	---	---	12	12	VQ02, Solomon Is. 5960
2. Gerry L. Dexter, Wisconsin	202	199	908	668	12	12	SIBS, Solomon Is. 5960
3. Bob Padula, Australia	199	190	---	---	15	15	Port Vila, Hebrides 3905
4. James W. Young, California	196	138	---	---	---	---	-----
5. Bill S. Sparks, California	194	189	533	524	12	12	Port Vila, Hebrides 3905
6. Marlin A. Field, Michigan	191	165	720	565	11	11	Radio Tahiti, 11825 kHz
7. Dan Henderson, Maryland	191	171	---	---	8	8	VQ04, Solomon Is. 3995
8. Alan H. Roth, Connecticut	190	167	530	396	9	8	Suva, Fiji Is., 5980
9. Alvin Sizer, Connecticut	188	173	632	251	13	12	R. Bougainville, 3322.5
10. Ernest S. Behr, Ontario	188	123	655	180	12	6	RONG, Biak, 5045 kHz
11. Marvin E. Robbins, Nebraska	187	156	741	365	8	6	Radio Wewak, 3335 kHz
12. Edward Shaw, California	184	155	---	---	13	12	Radio Fiji, 7195 kHz
13. Dr. T. B. Williamson, Ontario	180	168	---	389	---	---	-----
14. Jerry Berg, Massachusetts	176	164	---	---	---	---	-----
15. Ralph Perry, Illinois	176	156	---	---	8	5	SIBS, Solomon Is. 3995
16. Gregg A. Calkin, Ontario	174	155	---	---	7	7	Radio Rabaul, 3385 kHz
17. Serge C.P. Neumann, Indiana	171	154	---	---	---	---	VTW-2, Gilbert/Ellice Is
18. Hiroatsu Matsuura, Japan	170	160	---	---	13	13	UN Radio, Hollandia 6070
19. Bill Flynn, California	---	164	---	390	---	---	-----
20. Dan Ferguson, Florida	---	160	---	---	---	7	-----
21. A. E. Martin, England	158	149	---	---	3	2	Radio New Zealand
22. Craig Koukol, Illinois	158	130	---	143	9	8	Radio Fiji, 3230 kHz
23. Danny Jamison, Virginia	156	69	328	81	---	---	Radio Fiji, 3284 kHz
24. Bruce W. Churchill, California	155	130	203	157	13	13	R. Port Vila, 3905 kHz
25. Arthur Poulis, Massachusetts	154	113	---	---	10	9	Radio Tarawa, 4912.5
26. Kris Lemna, Indiana	153	116	---	---	---	---	Radio Fiji, Suva, 3284
27. Jim Zabransky, Illinois	152	129	205	168	11	11	Radio Fiji, 3280 kHz
28. Bob Brode, California	151	94	391	122	---	---	-----
29. Del Hirst, Texas	150	104	341	108	10	8	Radio Fiji, 9715 kHz
30. Mike Ryan, California	---	148	---	---	---	---	UNTEA Radio, W. Irian
31. Chris Lobdell, Massachusetts	148	138	256	183	5	5	SIBS, Solomon Is 7235
32. Bill Martin, Delaware	145	86	---	---	3	1	Radio Australia, 11710
33. Terry Adkins, California	144	88	258	100	---	---	-----
34. Steven P. d'Adolf, Mass.	140	106	170	127	---	---	-----
35. Henry Michalenka, Rhode Island	136	114	219	131	10	9	Radio Fiji, 3284 kHz
36. Steve Kemp, Texas/Calif.	131	104	295	179	8	8	VTW-2, Tarawa, 4912.5
37. Al Reynolds, North Carolina	131	91	231	104	5	2	Radio Tahiti, 11825 kHz

38. Richard Anderson, Illinois	130 115	---	160	5	5	Radio Rabaul, 3385 kHz
39. Bob Slowe, Illinois	127 110	---	---	---	---	---
40. Tom Neely, Michigan	126 107	---	---	7	6	Radio Rabaul, 3385 kHz
41. Mike Watman, New Hampshire	126 101	179	131	4	3	R. New Zealand, 15280
42. Jerry M. Stuart, Oklahoma	125 102	195	180	7	7	VLT9, Port Moresby 4890
43. Edward Kusalik, Ontario	124 108	144	128	10	9	Radio Fiji, 3230 kHz
44. Bill Eddings, Pennsylvania	122 103	168	151	9	8	---
45. Paul Mayo, New York	120 51	140	55	5	3	Radio Tahiti, 11825 kHz
46. David R. Alpert, Illinois	119 100	---	---	6	5	Nouméa, New Caledonia
47. Edward F. McElwain, Colorado	119 82	---	98	---	---	---
48. Rick Charnes, Massachusetts	117 73	176	85	5	4	Nouméa, New Caledonia
49. Andrew Pappas, Illinois	116 98	---	---	---	---	Radio Tahiti, 11825 kHz
50. Richard L. Murphy, Texas	116 92	---	---	6	4	Nouméa, 7170 kHz
51. Michael Seth, New York	116 73	253	81	6	3	VLT9, Port Moresby 9520
52. Dean Bianco, New York	116	---	145 116	---	---	---
53. Mark Duba, Vermont	114 89	121	99	---	---	---
54. Brent Hailpern, Colorado	114 88	225	125	9	7	VLT4, Port Moresby 4890
55. George Schnabel, New York	113 90	---	---	5	4	---
56. James S. Hurst, Maryland	112 95	161	132	4	3	Radio Rabaul, 3385 kHz
57. Bill Schultz, Penna.	112 80	167	108	6	4	VIX3, Port Moresby 3925
58. Thomas Henry, New York	111 76	174	86	---	---	---
59. Charles Conner, Louisiana	111 51	211	54	6	3	R. New Zealand, 15280
60. Angelo Gero, New York	111 40	---	46	10	7	SIBS, Solomons, 3995 kHz
61. John Zaharek, Connecticut	110 99	184	139	3	3	VIX9, Australia, 9610
62. Carroll R. Patterson, Georgia	110 97	240	131	7	4	VLI6, Sydney, Aust. 6090
63. Wesley Huggins, North Carolina	110 90	230	160	15	10	Radio Fiji, 3284 kHz
64. Greg Kelley, Virginia	110 68	130	75	---	---	---
65. Mario A. Sala, California	109 65	152	71	5	4	Nouméa, New Caledonia
66. Richard S. Hedges, B.C.	108 91	151	108	10	10	SIBS, Solomons, 3995 kHz
67. Gary S. Goltz, Penna.	107 79	142	90	5	4	VNG, Australia, 12,000
68. John T. Soneff, Louisiana	106 86	203	101	4	4	---
69. Irvin Glasberg, P. Q.	105 92	205	135	3	3	Radio New Zealand 15280
70. Jerry L. Green, Virginia	105 81	132	81	3	3	Radio Tahiti, 6135 kHz
71. Mark S. Konen, Wisconsin	104 64	---	---	7	5	Radio New Zealand 15280
72. John W. Hoogerheide, Michigan	104 49	---	---	---	---	---
73. John Fisher, Ontario	103 48	175	63	5	4	VLT9, Port Moresby 9520
74. Price Kagay, California	102 88	---	---	3	3	Radio Tahiti, 11825 kHz
75. Bob Kirkpatrick, B. C.	99 75	122	81	4	4	VUNG, Okinawa, 14460
76. Barry Glassberg, New York	98 75	---	---	5	5	Radio New Zealand 15110
77. Larry Marshall, California	98 72	145	102	8	6	SIBS, Solomons, 3995 kHz
78. Jean Burnell, P. Q.	95 76	157	105	3	3	NZBC, 11780 kHz
79. Harold Kalkstein, Penna.	95 55	130	65	7	5	NZBC, Wellington, N.Z.
80. Kim Stenson, Vermont	94 68	128	77	3	2	Radio New Zealand 9520
81. Mark Schwing, Colorado	93 73	100	79	5	5	Radio Tahiti, 11825 kHz
82. Leon Segal, New York	93 54	---	---	5	5	SIBS/VQ07, Solomons 7115
83. M. R. Leonhardt, Indiana	92 55	---	---	4	3	---
84. William G. Caldwell, California	91 72	---	---	5	5	Radio Tahiti, 11825 kHz
85. Kent Leonard, Colorado	90 38	154	58	7	5	WVH, Hawaii, 10,000 kHz
86. Harold Sellers, Ontario	89 68	160	93	6	5	Radio Rabaul, 3385 kHz
87. R. Stephen Dildine, Va.	89 64	---	---	7	6	VNG, Australia, 12,000
88. Thomas E. Jones, Minnesota	88 59	137	74	2	2	Radio New Zealand, 15280
89. Robert Moser, Illinois	87 63	---	92	3	3	ZL10, Wellington 15220
90. Eric Draut, Illinois	87 47	112	63	6	3	VLT4/4890, Port Moresby
91. David Volle, Illinois	86 75	130	80	3	2	Radio New Zealand 9540
92. David Baltimore, Penna.	86 62	92	64	3	2	Radio New Zealand
93. Mrs. Mildred Marshall, N. Dak.	85 77	120	106	2	2	Radio New Zealand 6080

94. Ron Bruns, Missouri	84	64	123	80	1	1	Radio Australia, 21740
95. Peter Taylor, Ontario	83	65	116	68	2	1	Radio Australia, 21740
96. Lawrence Scoville, New York	82	75	122	105	--	--	-----
97. Audie Kaufman, Tennessee	82	71	125	98	2	2	VLW15, Australia, 15425
98. Bob E. Estand, Texas	81	79	100	97	5	4	Radio Tahiti, 11825 kHz
99. John Mraz, Pennsylvania	81	61	111	71	2	1	ABC/Melbourne, 7190 kHz
100. Bill Coleman, North Carolina	81	21	---	---	---	---	-----
101. Kevin Klemen, Wisconsin	81	20	116	32	2	2	Radio New Zealand 11720
102. Mike Nikolich, Illinois	80	45	107	60	4	2	-----
103. George Morgenstern, Minn.	79	47	91	54	3	2	Radio New Zealand, N.Z.
104. Ivan Grishin, Ontario	78	51	---	---	6	3	Radio Tahiti, 11825 kHz
105. D. J. Weber, Ohio	75	68	---	---	---	---	-----
106. John W. Banta, New York	75	63	90	72	2	2	Radio New Zealand, 11780
107. Ralph Richards, California	75	15	---	---	---	---	-----
108. Andrew Rugg, Ontario	74	64	121	105	1	1	VLX9, Perth, 9610 kHz
109. Les Gaynor, Michigan	74	62	127	76	2	1	Radio Australia 11880
110. Edward J. Fyatt, S. C.	74	62	89	73	2	2	Radio Australia 11710
111. Larry Zamora, Texas	74	58	111	76	1	1	VLX9, Perth, 9610 kHz
112. William White, New Jersey	74	51	108	60	2	2	Radio New Zealand, 11780
113. Thomas O. Clark, Ohio	72	57	80	65	2	1	VLW9, Perth, 9610 kHz
114. Frank E. Aden, Idaho	72	55	---	---	---	---	-----
115. Scott Moeller, Pennsylvania	72	41	85	47	2	1	VLX9, Perth, 9610 kHz
116. John L. Kolb, California	71	59	83	67	---	---	-----
117. Tom Gavaras, Minnesota	71	57	108	76	2	2	Radio Australia, 9610
118. Anthony Marks, Oregon	71	57	93	73	---	---	-----
119. Neal A. Perdue, Tennessee	71	13	---	---	---	---	-----
120. Robert E. Byers, Ontario	70	62	85	70	4	4	Radio New Zealand 9540
121. Rick Loustau, California	70	43	---	---	---	---	-----
122. James Ducharme, Massachusetts	70	8	87	8	---	---	-----
123. Mike S. Hardester, California	69	59	103	89	8	7	VLT4, Port Moresby 4890
124. John Walenter, Illinois	67	57	---	---	---	---	-----
125. Terry R. Hicks, Florida	67	44	83	57	---	---	-----
126. Jim Weber, California	66	45	71	47	5	4	Radio Nouméa, 7170 kHz
127. Robert J. Koziomkowski, N. Y.	65	37	73	33	2	2	Radio Australia, 6140
128. Guenther Tumas, Penna.	65	32	13	3	2	1	Radio New Zealand 9520
129. Geoff Oates, B. C.	63	53	79	70	4	4	VLI6, Sydney, 6090 kHz
130. Don Adams, North Carolina	60	50	63	53	2	2	Radio New Zealand 6080
131. Barry Thedford	60	25	---	---	---	---	-----
132. Gary H. Tonere, Florida	59	35	75	44	4	2	VLW9, Perth, 9610 kHz
133. Mitchell Lewis, North Carolina	58	22	73	22	2	1	R. Australia, 11710 kHz
134. William J. Plum, New Jersey	54	47	87	75	1	1	VLW15, Perth, 15425 kHz
135. Norman Starr, Ohio	54	19	---	---	3	2	Wellington, N.Z., 11780
136. Steven Handler, Illinois	53	46	75	61	---	---	-----
137. Bob Peritz, New York	52	47	59	53	---	---	-----
138. Angelo Coppola, Italy	52	44	65	53	1	1	Radio Australia, 11740
139. Bob Kelleher, New York	52	33	---	44	---	---	-----
140. Robert Ingram, Ohio	52	14	59	17	4	0	-----
141. Johnie Gager, Idaho	51	35	57	38	3	2	Radio New Zealand 9540
142. Steven P. Fix, New York	50	31	88	---	---	---	-----
143. Dan Kening, Illinois	48	36	57	37	---	---	-----
144. Tom Blossom, Indiana	46	33	52	37	---	---	-----
145. Andy Kerr, Oregon	44	38	63	59	4	4	VLT4, Port Moresby 4890
146. Edward Fudman, Maryland	40	28	43	30	1	0	-----
147. Joey D. Kennedy, Louisiana	38	30	47	34	3	2	WWVH, Hawaii, 10,000
148. Vic Argabright, Colorado	38	23	42	23	2	1	Radio Australia 9580
149. Cal Cornils, California	36	35	48	45	4	4	Radio Tahiti, 11825 kHz
150. Mike Clyburn, Florida	35	29	41	36	2	2	Radio Australia, 11710

## QSLs RECEIVED

Again this month our members have received a fine selection of QSLs. Of particular interest, however, your editor would draw your attention to certain rare Latins in Bolivia, Ecuador and Mexico, in addition to cards from Bangladesh, letters from the Pathet Lao Clandestine and a roundabout QSL from Lubumbashi.

ANGOLA: Emissora Oficial de Angola, Luanda, 11875, card showing "Palanca Preta" and listing call-sign CR6RZ, for f/up of March '71. Two months for a report in English w/3 IRCs. QSL initialled by station Director (Robbins) 3375, 210 days for IRC and English rpt (Watman) 9 months for 6175 kHz (Padula)

ARGENTINA: R.A.E., Buenas Aires, 9690/11710, two cards in 86 days seamail (Campbell) 4 months for English report and mint stamps (Howard) 5 months for 3 IRCs (Lym) 3 months on 2nd try w/2 IRCs, for 9690 (Rabone)

ARMENIAN S.S.R. Radio Moscow, Erevan, 9680, card in 5 weeks air w/all details including site (Sellers) 9680, 1 month air. No IRCs (Duba) 5 weeks (L. Marshall) (L. Marshall)

ASCENSION ISLAND: BBC Atlantic Relay, 9510, Thames card in 13 weeks w/site but no data/

AUSTRALIA: VLW9/Perth, 9610, card w/full data in 2 weeks for 1 IRC (Conner) VLW15/Perth 15425, card in 13 weeks air for 2 IRCs (Schultz) 15425, 17 days for 2 IRCs air (Plum)

VLMA/Brisbane, 4920, ABC card in 80 days seamail for 2 IRCs (Schultz)

Radio Australia, Lyndhurst, 5995, Ayers Rock card in 92 days sea (Schultz)

Shepparton, 9780, card in 1 month for 1 IRC (Draut) 9570/9580/9590, separate cards in 7 weeks seamail. No IRCs (Kolb)

AUSTRIA: Vienna, 6155, card in 60 days depicting city of Vienna. No IRCs. (Abraham)

- BANGLADESH: Radio Bangladesh, Dacca, 15520, card, sked and BD postage stamp by air in 16 days. V/S: M. Habibullah, Installation Engineer. Full data QSL (Schultz) letter, and sked in 28 days, (Martin) 15517, card, letter and sked in 15 days air, still using Pakistani stamps (Dexter) 15 days air for 3 IRCs (Duba) 17910, card, personal letter and sked in 15 days air; no IRCs (Matsuura) card in 1 month (Perry) new full data card (Dildine) Mni tx to the last two DXers who sent photocopies for FRENDX.
- BELGIUM: ORU/Brussels, 6125, 4-color map card, transcript of DX program and sked in 22 days air for 2 IRCs (McCaul) 9550, card w/all details; air in 20 d. No IRCs sent (Ronda)

- BOLIVIA: Radio Fides, 4845, mimeo letter and pennant air from José M. Lop, Director. 11 weeks on 4th try (Dexter)
- Radio Nuevo América, 4797, by letter in 2½ weeks airmail from V/S: Raul Salmon, Gerente-Director (Dexter)
- BRAZIL: Radio Clube Paranaense, 6045, registered letter from Gilberto Cadamatz Dir., followed the next day by p/card verie in English saying rpts always welcome. 3 weeks airmail (Dexter)

Radio Globo, colorful thin p/ card in 103 days for 1 IRC (Campbell)



RADIO BANGLADESH

QSL

This confirms your communication and reception of our Short Wave Station listened on.....16.3-7.2.....time.12.4.3 hrs. to.....1.2.2.2.....hrs. G. M. T. on Frequency...15.5.21.....khz.

Remarks.....

Directorate General,  
Radio Bangladesh,  
20, Green Road,  
DACCA-5.

M. Habibullah  
Signature  
Installation Engineer  
Radio Bangladesh

BRAZIL: Radio Nacional, Brasilia, 15445, letter from Luthero Toledo stating that my English report was correct, but listed no data (M. Marshall) personal letter w/veri statement only in 3 weeks seammil from same V/S for English rpt and 2 IRCs (Duba) 11720, letter QSL in English, air in 3 weeks for 5 IRCs (Padula)

BRUNET: Radio Brunel, 4864, nice card showing Sultan Omar Ali Saifuddin Mosque, in 2 months for 3 IRCs. (Robbins)

BULGARIA: Radio Sofia, University card and sked in 53 days se (Campbell) 9700, colored photo card of Bachkovo Monastery in 3 months for 3 reports (Robbins)

BURMA: BBS verified via Pe Kyaing, Second Secretary, Burmese Embassy in Washington, to whom I reported for 5040 Burmese program. 26 days in total. Sent \$1 for domestic and 5 IRCs for international postage; 4 IRCs returned (Michalenka) 1 month from the Embassy (Kamp) standard BBS card received direct with note in English confirming report of some 2 years ago. That really writes "finis" to the Burma caper for me! (Dexter)

BYELORUSSIAN S.S.R. Radio Moscow, Orsha, 9655, card in 1 month from Mrs. Stepanova, for an aerogramme report (Perry) Orsha, card and report forms with site indicated; 1 month air (Duba)

CANADA: Radio Canada, Sackville, multi-colored card for 9615 covering special test transmissions to the Pacific area, airmail in 3 weeks (Padula)

Deutsche Welle relay, new card in 1 month airmail for 11865 relay; sked too. 4 months airmail. (Lym) RCI or DW card? (Ed.)

CFER, Toronto, p/card showing new and old city halls. V/S: Clive Eastwood. 1/IRC sent (Martin)

CHIX, Halifax, 6130, card in 10 days for mint stamp (Abraham) 10 days for 10  $\mu$ . Full data (McCaul)

CANAL ZONE: NBA Time Signal, 17697, returned self-prepared card from Naval Observatory, Washington, and signed by R. Glenn Hall. 8 days (Schultz) letter in 24 days for 2 separate reports from LCIR L. A. Freedman (Henderson) Assume you reported direct, Dan (Ed.)

CANARY ISLANDS: Radio Nacional de España, 15365, card showing xmtrs and control in 174 days seammil. 1 IRC and English report sent (Coleman) 11800, photo card in 6 months w/full data (L. Marshall)

CEYLON: Radio Ceylon, 9720, Orchid card air in 70 days; 3 IRCs (Nikolich) Birds of Ceylon card in 1 month airmail from Colombo; 3 IRCs; full data (McCaul)

VOA, Colombo, 11740, special 30th Anniversary card w/photo of antennae in 8 wks, giving date and site only. V/S: W. E. Dulin (Sellers)

CHAD: Radiodiffusion-Nationale Tchadienne, Ft.-Lamy, 4904.5, card in 8 months for 3 IRCs (Abraham)

➤ CHINA (PEOPLE'S REPUBLIC OF): Radio Peking, landscape card in 1 month airmail. No IRCs. No data (McCaul) sunrise card w/sked in 2 weeks; for 7120 (Conner) 15060, card in 3 wks air. No IRCs (Linsenmeyer) 16 days air; took 5 reports (Plum) 5 weeks; no IRCs (Kolb)

CLANDESTINE: La Voix du Pathet Lao replied by letter after 14 months for 7480 kHz. Freq. has been replaced by 7430 according to sked enclosed. V/S: Oun Heuan Phounsavath, Directeur adjoint du Bureau d'Information du F.P.L., and was mailed from Hanoi, IRVN. 5 IRCs sent, reply by seammil (Matthews) carboned letter in 11 weeks for 4660 (Dexter)

Radio Libération, La Voix du GRP de la République du Sud-Vietnam, sends letter in French in 67 days for NASWA French language report and mint stamps. Date and language only given (Henderson) Mint stamps of which country, Dan? (Ed.)

COLOMBIA: Ondas del Meta, 4885, received second Spanish verification letter and color booklet of the Meta area. 4 months after original rpt, via air. V/S: J. E. Cifuentes, Gerente (Howard)

Radio Nacional de Colombia, 9635, color photo card of Bogota in 6 months (Rice)

Radio Santa Fé, 4965, plantation scene card w/veri stant, plus small pennant.

V/S: Luisa de Bernal;  $\frac{3}{2}$  months air for Spanish rpt w/IRC (Plum)

Radio Super, 6065, letter and tourist folder fm: Gustavo Rivera Mendez, Departamento Técnico. 6 weeks, airmail after follow-up (Dexter)

COLOMBIA: Radio Vision, 6105, Medellin, Spanish-letter in 3 weeks for 3 IRCs, also including Colombian stamps. Envelope oddly enough was of "la Voz de Antioquia", formerly on SW (Robbins)

Emisora Nueva Granada, 6160, Bogota, verie-letter on RCN stationary, after many years of trying. Friendly letter from Lucy Rodriguez C., Secretaria-Gerencia. 4 wks and 3 IRCs (Robbins)

Emisoras Nuevo Mundo, Bogota, 4755, Caracol card in red/black/grey/white, from Mario Fric L., Departamento Tecnico. 5 weeks and 3 IRCs. Reported in Spanish (Robbins)

CUBA: RHC, 9550, card in 7 months w/skcd, for no return postage (Draut)

CYPRUS: BBC Linassol, Thames card with site indicated in 12 days air from London. (Duba)

CZECHOSLOVAKIA: Radio Prague, 5930, orange card of church and gates, 29 days air (Pacheco) 7345, five weeks for no IRCs (Kolb) card of Zvikov Castle in 2 months, together with pennant and Czechoslovakia Life magazine (M. Marshall)

DENMARK: Radio Denmark, 15165, white "Radiohouse Aerial Tower" card w/full data in 1 m. for 1 IRC (Conner) glossy b/w card of radio tower w/full details; 1 month air for 2 IRCs (McCaul) 2 weeks for 1 IRC (Linsenmeyer)

ECUADOR: HCJB, Quito, 9615, card airmail in 25 days for 2 IRCs (M. Marshall) 11745, Chapel card in 28 days air for 2 IRCs w/usual enclosures (M. Marshall) Sea Wolf card in 35 days air for 2 IRCs (Sellers) 9615, card in 2 months for 3 IRCs/airmail (Robbins)

Canal Manabita, 4815, Spanish letter from V/S: Ramon Fernandez Cevallos; also pennant. Reported in Spanish w/mint stamps. Reply in 34 days (Slowey)

Radio Centinela del Sur, 5035, friendly Spanish letter from V/S: Hernan Coronel V., w/full data. 18 days for Spanish report w/mint stamps (Slowey)

Radio Paz y Bien, 4820, Spanish letter from V/S: Padre Jorge Enriquez Silva, together with p/card and apologies for the delay. 47 days for a Spanish report w/mint stamps (Slowey)

EGYPTIAN ARAB REPUBLIC: Radio Cairo, 9475, black on white card w/full data. Also skcd, station history, newspaper, tourist pamphlets and personal letter in 2 months airmail. No IRCs (Stahl) paper QSL airmail in 133 days (Nikolich) Egyptian scene card which replaces form letter. 3 months seamail. No IRCs (McCaul)

ENGLAND: VOA-Woofferton, 15300, 30th Anniversary card with view of antennas in 3 weeks with all data except time. V/S: Rosemary Bailey (Conner) 2 weeks, all data except time (Kamp)

BBC, 9580, color card of Parliament Buildings; 48 days seamail. No IRCs (Stahl)

FINLAND: Radio Finland, 9585, standard map card w/schedules in 25 days airmail for IRC (Campbell) 15185, headphones/map card plus skcd in 43 days airmail (Stahl) 2 weeks air for 2 IRCs (Linsenmeyer)

FRANCE: ORTF, 21580, b/w card with full verification in 30 days air; no IRCs (Ronda) black/white picture of building in 1 month air; no IRCs (Conner) 49 days seamail; no IRCs (Campbell)

FRENCH GUIANA: ORTF, Cayenne, 3385, letter QSL, schedules in 18 days airmail for French report with 2 IRCs. V/S: S. Palmier, Chef d'Etablissement (Campbell)

GABON: Radiodif. TV Gabonaise, Libreville, card in 1½ months air for 3 IRCs (Reeves)

GAMBIA: Radio Gambia, 4820, legal-size mimeod form letter from V.E. Foster, Director of Information and Broadcasting, and indicates a power of 3.1 kW. 2 months for 3 IRCs (Robbins) air in 60 days (Ronda) 1 month, 11 days for 3 IRCs; air (Schnur)

G.D.R. DIZ/Nauen, 4525 kHz, letter with station information, and photo of main measuring room from V/S: Dr.-Ing. M. Meinig. Seamail in 74 days for 2 IRCs (Schultz)

G.F.R. Deutsche Welle, 6040, Olympic card w/full data and skcd in 43 days air (Stahl)

G.F.R. Südwestfunk, 7265, card showing green map of SW Germany, with lettering in blue/grey. Lists power as 1.5 kW and site as Rohrdorf. 5 weeks for 3 IRCs (Robbins)

Voice of America, Munich, 6150, color anniversary card in 10 days from Rosemary Bailey. No return postage sent. (Howard)

GHANA: Radio Ghana, 11850, red/yellow/green card w/sk'd in 21 days airmail. 1 IRC sent. (Campbell) 11850, 3 months seairmail for 2 IRCs (McCaul)

GREECE: N.H.B.I., Athens, 15345, white card w/full veri in 17 days, via registered air mail for English report and 2 IRCs (Dildine)

GUATEMALA: Radio Cultural, TGNB, 9505, Quetzal QSL, letter, sk'd, and religious enclosures in 1 month for 2 IRCs. V/S: David Keeler, Recording Engineer (Conner) 9504, card in 41 days for English report and mint stamps (Dildine)

GUYANA: G.B.S., 3290, letter QSL from M. O. Denny, C. E. in 30 days airmail for 2 IRCs (Campbell) letter QSL airmail in 37 days for 2 IRCs (Nikolich) form letter with all details in 2 weeks airmail; 3 IRCs (Ronda)

HAITI: 4VEH, 9770, card and religious tracts in 46 days for 3 IRCs (Draut) blue folder card with map of the Caribbean; full data and regular enclosures. 24 days air for 3 IRCs (McCaul) 11855, map card w/sk'd and religious folders in 12 weeks air for 2 IRCs. V/S: Mrs. Kent Ragsdale (Linsenmeyer) 15280, card listing power this frequency as 350 watts. V/S: Mrs. Kent Ragsdale (Robbins) 5 weeks for 2 IRCs (Kolb)

HAWAII: WWVH, 15000, native island card with all details except time in 2 weeks for 1 IRC. V/S: C. L. Trembath, Engineer-in-Charge (Conner) card in 5 days (Abraham) 10000, brown card with drawing of native and outline map of Kauai in 15 days. V/S: C. L. Trembath (Sohnuz)

HONDURAS: La Voz Evangélica, HRVC, 4820, card w/full data in 19 days airmail. 3 IRCs sent. (Stahl)

Radio Suyapa, 6040, letter QSL and large red/blue pennant in 21 days airmail, from V/S: Francisco Elortegui Iparraquirre, Gerente. 1 IRC sent. Unusual frequency drift was the result of xmtr troubles but this has now been fixed. (Campbell) Station heard well again on 6125 kHz (Ed.)

HUNGARY: Radio Budapest, 9853, orange card airmail in 25 days with pennant, April/May issues of Budapest International and a short history of Radio Budapest (M. Marshall) 6175, card in 25 days. No IRCs (Kolb) 50 days seairmail (Stahl) 6065, 2 months (Ronda)

INDIA: AIR, 9525, card of Regatta on the river, Jhelum, Srinagar, Kashmir, in color. 3 IRCs (Robbins)

INDONESIA: RRI Ambon, complete verie on regular RRI card, notated, from V/S: A. Njonki, Director. Reported in Indonesian with 5 IRCs, by registered mail (Perry)

INTERNATIONAL WATERS: Radio Nordsee International, 6205, glossy card w/color photo of the Mebo II. 70 days air for 2 IRCs (McCaul) 3 months for 3 IRCs. Rpt'd in EE to Zurich (Robbins) card in 26 weeks (Padula) 93 days w/no data; 3 IRCs (Henderson)

IRAN: Radio Teheran, card by registered airmail in 40 days. (Martin) 15084, card in 10 weeks registered airmail. 2 IRCs. (Kolb) card in 3½ months (L. Marshall)

IRAQ: Radio Baghdad, 6095, colorful card with full data in 9 weeks; 1 IRC sent (L. Marshall)

ISRAEL: IBA, Jerusalem, 9625, card w/sk'd in 20 weeks air for 2 IRCs (Linsenmeyer)

ITALY: RAI, no QSL, but a glue/grey pennant and HS sk'd. Air in 2 weeks (Reeves) 9575/11810, two colorful antenna/map cards; one for each freeq. 39 days airmail (Stahl)

IVORY COAST: Abidjan, 11920, letter and very vague veri statement. 3 months for 3 IRCs, and wants reports on new English-language service (Robbins) 3 weeks air; no IRCs (Ronda)

JAPAN: NHK, 15445, colorful QSL and p/card of cherry blossoms, plus sk'd in 14 days; no IRCs (Abraham) 11815, QSL of Sapporo Olympic poster No. 2; 3 weeks (Robbins)

JORDAN: Amman HS, 7155, color p/cd of Petra; 28 days air for 4 IRCs. (Michalenka)

KENYA: Voice of Kenya, Nairobi, aerogramme QSL in 13 days for English report and 3 IRCs and w/full data (Duba)

KUWAIT: Radio Kuwait, folder card and sked in 1½ months air for 1 IRC (Reeves) 11925, folder QSL in 25 days airmail for 1 IRC (Nikolich) 15345, QSL in 30 days air for 2 IRCs (Ronda) 11845, folder card w/sked in 8 weeks air for 2 IRCs (Linsenmeyer)

LEBANON: Beirut, 11970, card and sked in 263 days via registered seammil. Full data QSL (Schultz) 11705, card and sked in 11 weeks (Padula)

LESOTHO: Radio Lesotho, 4800, flag card in 20 days via airmail, with full verification data. IRC and English report (Watman) 35 days for 3 IRCs (Slowey) 2 weeks airmail for 3 IRCs (Lym)

LIBERIA: Voice of America, Monrovia, 15445, card in 5 weeks from Washington (Abraham)

ELWA, Monrovia, 4770, red/white/black native drummer card, religious tracts & sked in 1 month for 1 IRC (Conner) 11950, drummer card in 4 weeks air for 2 IRCs (Linsenmeyer) 1 month with sked, and relig. tracts (Lym)

LUXEMBOURG: Radio Luxembourg, 6090, antenna card in 144 days (Nikolich) 2 months (Draut)

MALAGASY REPUBLIC: Radio Nederland, Talata, 15260, card depicting island map in 6 weeks for No IRCs (Kamp) 14 days (Nikolich) 15260, 2 months (Robbins) 1 month for 1 IRC (Conner) 6 days (Abraham) 15195, giant size card in 4 weeks air for report on "Happy Station" programme on this frequency, Sundays only (Padula)

MALAYSIA: BBC relay, 15310, card via London in 1 month with site, but no data (L.Marshall)

MEXICO: Radio Difusoras de Sonora, S. de A.L., XEHR, 11820, letter in Spanish from V/S: Luis Hoffner Obregon, Gerente, in 3 months. Reported in English with mint stamps. (L. Marshall) 5½ months air, 4 months after card received in person upon visit to station! (Calkin)

Radio Universidad Nacional de México, XEYU, 9600, D.F., letter in Spanish, full data, after two visits to the station, two reports and two f/ups; all in Spanish. V/S: Raúl López Malo, Jefe de Programaciones. Two weeks after final f/up with mint stamps. (Calkin)

Radio México, 17835, paper QSL with all details, printed letter, sked, pennant, questionnaire, and "Facts About México". Airmail, via registered mail, for English rpt, after 10 weeks (Padula) ditto in 5 months registered (Duba) 3 months via registered mail for 2 IRCs (Kamp)

MONACO: Trans-World Radio, card, w/complete veri data, in 3 weeks air (Reeves) 2 months for 1 IRC. Full data (Conner) air in 60 days, 2 IRCs sent (Ronda) 11960, 9655, cards seammil in 16 weeks, w/sked and religious material (Padula) 11 weeks air (Sellers) 7290, 8 weeks for 2 IRCs. (Linsenmeyer)

MOROCCO: Radiodiffusion-Télévision Marocaine, Rabat, 6170, folder card in 6 months, 1 wk, for French report and 1 IRC (Howard)

MOZAMBIQUE: Radio Clube de Moçambique, studio card in 18 wks, seammil for 3 IRCs (Kamp) 11 weeks for 11780, a difficult frequency from this location. Valued. (Padula)

NEPAL: Radio Nepal, Kathmandu, card and letter in 63 days air. V/S: K.B. Khatry. Requests reports on 5000 kHz frequency (Martin)

NETHERLANDS: Radio Nederland, Lopik, 9715, card, sked, pennant in 24 days. No IRCs sent. (Draut) 6020, Happy Station card in 63 days for 1 IRC (Watman) 11925, card printed in Spanish from Spanish Dept., for report on Spanish transmission. Airmail in 10 days (Padula)

NETHERLANDS ANTILLES: Radio Nederland, Bonaire, 9715, replied by Halmstads SW Club card, in 17 days airmail. 2 IRCs (Campbell) 11730, card in 1 month for 1 IRC (Conner) 1 month air for 1 IRC. Full data (McCaul)

Trans-World Radio, Bonaire, 11815, b/w card of radio building, w/full data, sked and religious material in 2 weeks air for 2 IRCs (McCaul)

NEW BRITAIN: Radio Rabaul, 3385, data sheet folder w/date and time from V/S: Paul Cox, 12 days for 3 IRCs. (Slowey)

NEW GUINEA: Radio Madang, 3260, folder QSL w/no data in 11 days air for 2 IRCs. V/S: Joseph Gohan (Matsuura)

Radio Morobe, 3220, letter from R. Barlow, Acting Station Manager, stating that they do not have QSL folders at the moment. 23 days air for no IRCs (Matsuura)

NEW ZEALAND: Radio New Zealand, ZL-13, 11780, card/globe in 52 days w/"Tiki" good luck charm, tourist literature and schedule. (M. Marshall)

NIGER: ORTN, Niamey, 9705, card w/date and time in 2 weeks for 3 IRCs and a registered report in French (Slowey)

NIGERIA: Voice of Nigeria, Lagos, green flag card in 3 months airmail. Full data (McCaul)

NORWAY: Radio Norway, Oslo, 21750, color scene card w/full data in 32 days air. No IRCs (Matsuura) 15170, card in 3 weeks for 1st day's transmission this frequency (Padula) 9645 LLH with scenic QSL/Mountain view. Also for 17825; both in 3 weeks (Robbins)

PAPUA: VLT4, Port Moresby, 4890, card in 23 days for 2 IRCs (Pacheco) 74 days airmail for 2 IRCs, two cards (Martin) air in 4 months (Ronda) 9520, map card, full data, four weeks air. No IRCs (Kolb)

Radio Kerema, 3245, folder card with no data from V/S: P. C. Pennington, seamail in 63 days for 2 IRCs (Matsuura)

Radio Milne Bay, 3235, folder and letter from Graham Leber, Assistant Manager, in 16 days airmail for 2 IRCs (Matsuura)

PERU: Radio Atlantida, 4840, Spanish letter w/date and time in 27 days. Reported in Spanish with mint stamps (Slowey)

PHILIPPINES: FEBC, Manila, 9715, yellow globe card in 1 month for 3 IRCs (Lym) 11920, card airmail in 23 days (Nikolich) 11920, card in 1 month w/green hut, palm tree and river card. 2 IRCs (Abraham)

South East Asia Radio Voice/Manila, 9650, card and p/card showing view of Manila, plus letter from V/S: José J. Wenceslao, Technical Director. Airmail in 3 wks. (Padula)

POLAND: Warsaw, 11840, map card in 2 months. No IRCs sent (Lym)

PORTUGAL: IBERA Radio, 9670, card, full data, and small pennant via Sweden; 10 days air for 3 IRCs (Howard) 9660, card in 11 days air for 3 IRCs. Full data (Schnur)

Radio Free Europe, 11915, card from Munich airmail in 4 weeks w/sked. Xmtr location given as Lisbon 11, 50 kW. (Padula)

Radio Portugal, 6025, map card in 20 days air for report w/out IRCs. All data, plus pennant as per request (Sellers) 15340, p/card QSL in 12 days airmail (L. Marshall)

PORTUGUESE GUINEA: 5041, plain green folder QSL in 46 days airmail, for Portuguese rpt w/3 IRCs (Campbell)

REUNION IS: ORTF, St.-Denis, complete data form letter confirmation in 2 weeks after f/up, 4½ months in all. V/S: J. Sonntag, who says first report never reached them. 3 IRCs sent. For 2446 kHz (Perry)

RUSSIAN S.F.S.R. Radio Moscow, Armavir, 9800, card in 7½ weeks air, w/site marked (Sellers) 40 days for 7200 (Henderson)

Radio Moscow, Ivano-Frankovsk, brown/white card w/red printing, air in 34 days from Mrs. Stepanova, for 9760 w/site marked (M. Marshall)

Radio Moscow, Kazan, 7300, card w/xmtr site in 22 days air (Plum) 36 days air; no return postage (Dildine) 6 weeks (Sizer) 7240, 5 weeks (Sellers)

Radio Moscow, Petropavlovsk-Kamchatsky, 9540, full data card in 5 weeks air (Howard)

Radio Moscow, Serpukhov, card for 5940 in 40 days (Henderson) 5940, in 7½ weeks (Sellers)

Radio Moscow, Sverdlovsk, 7150, card in 40 days (Henderson) 6 weeks for 7150 kHz (Robbins) 5 weeks airmail for 7150 (Plum)

Radio Moscow, Tula, card for 7255 in 6 weeks (Robbins) 40 d (Henderson) 7290, card in 5 weeks airmail; full data including site. (Sellers)

Radio Moscow, 9650, card w/sked booklet in 27 days air (Stahl) site? (Ed.)

SABAH: Radio Malaysia Sabah, Kota Kinabalu, cards and personal letters for 7240 and 7180 in 3 weeks each for 2 IRCs with each. (Padula) 7180, yellow & black map card w/full data except time in 21 days air for 1-IRC (Matsuura)

SIERRA LEONE: Freetown, 3316, pic/p/card of Capital with full data typed on reverse side in 170 days airmail; 1 IRC sent (Watman) shall

SOLOMON IS: Honiara, 3995, map card w/full data in 9 days for taped rpt & 3 IRCs (L. Mar-/SPAIN: Radio Nacional de España, 6140, card of studio with typewritten thank you note for the report. 40 days airmail for 2 IRCs (Facheco) 2½ months for 11925 kHz (Draut)

SURINAM: AVROS, Paramaribo, replied with current SROS folder after 11 years and 12 tries for an AVROS transmission of Feb 3/61. Current CCB freq. taped out and 15460 kHz and 1 kW written in in ink. Longest QSL ever? (Henderson) You are undoubtedly in the running!

SWAZILAND: QSL de Swazi Radio via Mark Wodlinger for March report. Heretofore, only letter from South Africa. 6 weeks and station brochure enclosed w/QSL (Shaw)

SWEDEN: Radio Sweden, 11805, nice color pattern card in 2 weeks, but ignored request to identify site on QSL as the temporary Grimeton PTP transmitter. (Sizer)

SWITZERLAND: Berne, 15305, nice b/w photo card of Schwartzburg serials in a snow setting. 2½ months from V/S: J. A. Chisholm. (Robbins)

UNION OF ARAB EMIRATES: Dubai replied in 1 month for 6040 with card. Reported in English with 3 IRCs. (Sizer)

VENEZUELA: Radio Bolivar, verification letter in Spanish from V/S: José Antonio Nicolas, Dir. in 17 weeks airmail for a report in Spanish with mint stamps. (Howard)

VIETNAM (NORTH): Voice of Vietnam, 12025, paper QSL in 10 months (Kelly) 8 months for a taped report (Marks) 170 days for 15018, w/skcd (Gavaras) 159 days direct by sea (Schultz)

WEST BERLIN: RIAS, 6005, b/w photo card of RIAS Hq., 10 days air, returning IRCs (Watman)

WINDWARD ISLANDS: Radio Grenada, 5015, plain green card w/full data, 1 month on 2nd try (Rosen) 15100, card indicating name change in 6 wks (L. Marshall) 1 month for 11975 (Lym)

YUGOSLAVIA: Beograd, 9620, folder card of Belgrade, w/full data in 112 days (Plum) 50 days airmail for 3 IRCs and a report on 9620 kHz (Webb)

- ZAIRE: Lubumbashi, 4850 & 11862, airmail letter in 11 days from J. P. Nicole, currently at CRTF/Cayenne & formerly at Lubumbashi. Lost count of the tries needed on this. (Dexter)
- ZANZIBAR: RTZ, 3339, aerogramme in 25 days for 4 IRCs, but not a QSL (Young) Omar N. Omar BC Info Officer writes that steps are being taken now to verify my 3339 rpt! Would you believe? (Sizer) Ho-Hum! (Ed.)

SPECIAL THANKS TO THE FOLLOWING DXers

Dan Henderson, MD	A. E. Martin, UK	Bob Riter, WV
Larry M. Abraham, MI	Mark Hogarth, NY	James P. Ronda, OH
Ron Bruns, MO	Ron Howard, MD	Evan Rosen, NY
G. A. Calkin, MEXICO	Edward Insinger, NJ	Marvin Robbins, NE
John Campbell, TX	Tom Jeffrey, OR	Karl Schubert, MD
Dick Clawson, MD	Steve Kamp, CA	Bill Schultz, PA
Bill Coleman, NC	Greg Kelly, VA	Harold Sellers, ONT
Gerry L. Dexter, WI	Neal Kolb, FL	Ed Shaw, VA
R. S. Dildine, VA	Chris Lobdell, MA	Alvin Sizer, CT
Eric Draut, IL	Al Linsenmeyer, IL	Bob Slowey, IL
Mark Duba, VT	Brian Lym, CA	Bill S. Sparks, CA
Al Friedman, OK	Lawrence Magne, PA	John H. Stahl, MI
Tom Gavaras, MN	Mrs M Marshall, ND	Mike Watman, NH
F. Earle Hall, MA	Larry Marshall, CA	Corzy Webb, TX
Mike Hardester, CA	Anthony Marks, OR	James W. Young, CA
	Hiroatsu Matsuura, JA	
	WM. A. Matthews, OH	
	Geo. McCaul, CT	
	Doug McClellan, NM	
	H. Michalenka, RI	
	Frank Orcutt, NY	
	Mike Nikolich, IL	
	Dennis Pacheco, RI	
	Bob Padula, AUSTRALIA	
	Ralph W. Perry, IL	
	W. J. Plum, NJ	
	George Rabone, NY	
	Scott Reeves, MD	
	Bob Rice, PA	



XEBR, "La Pantera del Aire", is now being heard regularly on 11820 kHz with musical and commercial programme from Hermosillo, capital of the Mexican state of Sonora. The station is anxious for reports (English OK).

BY AIR

ON GOVERNMENT'S MALAYSIA

Bc. BROADCASTING HOUSE.  
KUCHING.

24<sup>th</sup> July 1971

RADIO MALAYSIA, SARAWAK, acknowledges with thanks your letter of JUNE 20<sup>th</sup> 1971 and takes great pleasure in confirming your reception of our station (4950 kHz., 1204-1220 GMT)

*S. S. S. S. S.*  
S. CONTROLLER OF RADIO

To: GREGG A. CALKIN  
RIO BALAS 35  
COLONIA CUAUHTEMOC  
MEXICO 5, D.F.,  
MEXICO

Radio Malaysia Sarawak replies directly from Kuching with this full data verification. The reverse of the QSL shows a view of Broadcasting House.

FRONT UNI NATIONAL DU KAMPUCHEA  
BUREAU POLITIQUE DU COMITÉ CENTRAL  
BUREAU D'INFORMATION

Pékin, le 31 Mai 1971

Chers amis,

Nous vous remercions de votre lettre et de l'intérêt que vous avez bien voulu porter à l'émission et au programme de notre Radio - Diffusion, " La Voix du F.U.N.K. ", organe du Ministère de l'Information et de la Propagande du Gouvernement royal d'union nationale du Cambodge .

C'est un témoignage de sympathie et de soutien auquel notre peuple en lutte contre l'agression américaine pour le salut national est particulièrement sensible et dont il s'efforcera à l'avenir de se montrer digne .

Nous nous permettons, afin d'améliorer vos écoutes, de vous préciser les horaires et les fréquences des émissions de " La Voix du F.U.N.K. " :

1ère émission :

23.00 - 24.00H. GMT sur 25 m ( 12006 kcs ), 30 m ( 10090 kcs, 9988 kcs )  
40 m ( 7020 kcs ) et 60 m ( 5000 kcs ) ,

2ème émission : ( Emission spéciale ) .

24.00H. - 01.00H. GMT sur 25 m ( 12006 kcs ), 30 m ( 10090 kcs- 9988kcs )  
60 m ( 5000 kcs )

3ème émission :

4.00H. - 5.00H. GMT 25 m ( 12006 kcs ), 30 m ( 10090 kcs, 9988 kcs ) ,  
60 m ( 5000 kcs ) .

4ème émission :

11.30H. - 12.30H. GMT sur 25 m ( 12006 kcs ), 30 m ( 10090 kcs,  
9988 kcs ), 40 m ( 7020 kcs ), 60 m ( 5000 kcs ) .

5ème émission :

14.30H. - 15.30H. GMT sur 25 m ( 12006 kcs ), 30 m ( 10090 kcs,  
9988 kcs ) 60 m ( 5000 kcs ) .

En vous renouvelant l'expression de nos remerciements, nous vous prions de croire à nos salutations les meilleures .

P. Le Bureau d'Information près le Bureau Politique  
du Comité Central du Front Uni National du Kampuchea .

(Editor's Note:

This is the rather vague reply which certain DXers have received from the Sihanouk/Cambodian SWBC CLANDESTINE station, which operates from China.)



*Handwritten signature*

Madame VAN PINY

# LISTENER'S NOTEBOOK

Dan Ferguson, 1521 Smith Road, Apt.7, Charleston, W.Va. 25314 Phone (304) 346-5738

OUR CONDOLENCES to Mrs. Marion Ely, in the recent loss of her husband Vince, who had been ill for some time.

Radio 4VEH- Linda Ragsdale informs us, via NASWA HQ, that 4VEH has changed the letter month to June, which is the anniversary month the station went on the air. "We hope to receive many reception reports from your members during that month." She also notes that the station has extended the broadcast time, running through the 1400-1700 period, "which fills up our broadcast day." "We would like to know especially in the foreign countries if this is a better time for listening, and would like to know how we are heard at this time of the day in your area.".....Your editor has noted the 11835 fcy at good level recently, around 1600 GMT.

We have received further details on the ANARC CONVENTION to be held 14-16 July. Jerry Berg & Steve d'Adolf tell us that the banquet speaker Saturday night will be Eddy Startz! For those newer DXers who might not know, Eddy Startz hosted the Radio Nederland "Happy Station" show for decades, and is one of the best known international shortwave personalities anywhere.

Also, there will be many prizes - books, gift subscriptions, magazines, AND A GILFER A-20 PRESELECTOR. Another feature will be a "sale and swap" table for those who wish to buy or sell equipment or other radio items.

There will be an equipment display, and if anyone is interested in bringing along a receiver or other gear there will be a place to set it up and display it. HOWEVER, IF YOU PLAN TO BRING EQUIPMENT, please contact Jerry Berg at 38 Eastern Avenue, Lexington, Mass. 02173, first, so they will know what is coming.

Your editor plans to be there - will be driving up with Ed Shaw, Dan Jamison and Dan Henderson. Many other NASWA members have indicated they will be there, too. We hope to see you at Boston!

NASWA STATIONARY is still available from Ed Shaw, 621 Burtleigh Avenue, Norfolk, Virginia 23505. Cost is \$1.50 per 50 sheets.

AL REYNOLDS informs he will be moving to Tennessee as of June 1. Address will be P.O. Box 3012, Jackson, Tennessee 38301. Al is interested in meeting DXers in the area.

RADIO MOSCOW SKEDS We received, a few days ago, a schedule of the RM external svc transmissions. This sked, from BBC MS, runs to 24 pages, just in the RM listing, plus several pages of data on other services, such as Radio Peace & Progress. Since the complete schedule is far too large to include in LN, I will check out data for individual NASWA members in the skeds, at your request. Just please send an SASE. You will note a few references to this sked in the Log Report this month. (DF)

BANGLADESH George Schnabel notes that the 16 meter fcy given in May LN for this stn is incorrect for the 1230-1300 English tx. George found them on 17935, not 17910. He also notes that Bangladesh is not hrd on 15455, which is covered by Moscow at that time. (The Moscow tx is "RS Atlantika". per BBC MS).

**Eddy  
Startz  
at  
Boston**

CUBA Larry Magne has traced the Radio Havana Cuba external svc sked, since the quarterly change 7 May. It follows:

To Europe

1900-2007 French on 17815  
2007-2140 English on 17815

To Mediterranean

0630-0730 Spanish 15365  
0730-0800 French 15365  
0800-0830 Arabic 15365  
0830-0930 Spanish 15365  
0930-1000 French 15365  
1000-1030 Arabic 15365, 11930  
1030-1045 Spanish 15365

To Americas

0058-0450 English 11930, 11815  
0330-0600 English 11760  
0450-0600 English 11815  
0628-0800 English(WCNA) 9255  
2050-2140 English(LA) 17715/  
15285

0300-0330 French 11760  
0900-1000 Port- Brazil 11930  
1000-1100 Quechua- SA 11760  
1100-0600 Spanish (not fully traced,  
but includes 15340, 15285,  
15270, 11760, 17715)

2200-2300 UNID lang(either Quechua  
or Guarani) 15285  
2300-0000 Port- Brazil 15285  
0200-0300 Creole(Tu-Su) 6060 list  
0200-0300 French(Mon) 6060 list  
1100-1200 Creole(Tu-Sa) 6060 list  
1100-1200 French(Su-Mo) 6060 list  
("list" items are per BBC MS)

To Mediterranean

1700-1810 French 17855, 15360  
1810-1850 Arabic 17855, 15360  
1850-2025 Spanish 17855, 15360  
2025-2105 Arabic 17855, 15360  
2105-2140 French 17855, 15360

This schedule should remain in effect until September 4, 1972.

MALAYSIA In the May LN, fgy for BBC-Tebrau should be 11750, not 11780. Sorry for the typo. (Richard Wood) Thanks for the correction. (DF)

DOMINICAN REPUBLIC - RTV Dominicana now running daily to 0500 s/off on 9505 kHz. (Richard E. Wood)

MEXICO XEBH, la Pantera del Aire" now active daily, approx 1200-0600, on 11820, varies plus or minus 1 kHz. ID as "Radio BH"(MW call XEBH).(Richard E. Wood)

DON'T MISS THE ANARC CONVENTION!!!!

KUWAIT Corky Webb sends sked received from RK, effective 7 May- 3 Sept 1972.. 0400-0600 on 15345 to India/Pak/Ceylon 1600-1830 on 15345/9520 1830-2100 on 11825 to Europe. (I presume all programs in English(DF))

TO HEAR OTHER COUNTRIES in Broadcasting Zone 39 (as defined by the ITU):

Israel - Try for English at 2045-2100 on 9725, 9625, 9009, 6170. At 2100-2115 on 9725, 9625, 6170. At 2115-2130 on 9725, 9625, 9009, 6170. (BBC MS)

Iraq - A good bet is 15400v kHz at 0400 in Arabic, currently putting in a good signal in NA. Or the new fgy, 17772 in the 1500-1700 period - see this month's LN section.

Qatar - At s/on 0230 on 9570, you might find Doha mixed with Bucharest.

Jordan - Try 7155 in Arabic around 0400. Or, try the tx to SA at 2330-0015 in Spanish, at 0015-0030 in Arabic, on 15170 kHz. (BBC MS)

Lebanon - For Beirut, latest fgy is 11955v, at 0130-0400 to NA, has English 0230-0300. (Bill Berghammer)

SAUDI ARABIA - Try 11950 after 0400, in Arabic. Or 11855 around 2000 in English.

Syria - Damascus can be heard at 0030 in Arabic to SA, on 15290 kHz.

United Arab Emirates - Dubai sometimes audible during winter DX season on 6040 in the 1200-1400 period; most often heard in the mid-west NA. Abu Dhabi on 9695 at s/on 0230 is best bet.

Turkey - For Ankara, try 15195 at 2200 in English.

IF YOU HAVE A PARTICULAR AREA YOU WOULD LIKE TO SEE COVERED, either partially, or completely, drop a note to your LN editor and we'll see what we can work up. (DF)

SPAIN RNE, Noblejas, apparently testing morning service to LA. On unannounced 17805 at s/off 1500 w/repeat of previous evening's LA Svc. Tx to EQ,Guinea at 0530-0730 on 15420 may now be via Noblejas, as has improved strength & modulation.(R.Wood) Summer ITU list shows Arganda, but that info submitted 15 Feb. (DF)

SWEDEN RS to NA, effective 7 May: to ECNA 0000-0230 on 11805(temporary) and 15295, 1400-1530 on 15310. To WCNA at 0300-0430 on 11705. (Richard E. Wood)

CHINA Radio Peking Home Service, "Chungyang Jenmin Kwangpo Tientai". First Network.  
Transmission Period: Tuesday from 1958-0600, 0848-1735, Wednesday and Monday from 1958-1735. Revised May 1972 per data from I. Ugusa, R. Bundy, L. Magne.

Submitted by Larry Magne.

1958-2305 3220, 4460, 4905, 5320, 6225, 7095, 7504, 9064, 9080, 11290  
 2305-2335 4460, 4905, 5320, 6225, 7095, 7504, 9064, 9080, 11290, 11330, 15590  
 2335-0003 4460, 5320, 6225, 7095, 7504, 9064, 9080, 11290, 11330  
 0003-0100 4460, 5320, 6225, 7095, 7504, 9064, 9080, 11290, 11330, 11925, 15550,  
 15590  
 0100-0230 6225, 7095, 7504, 9064, 9080, 11290, 11330, 11925, 15230, 15550,  
 15590, 17605  
 0230-0600 (Tu) 6225, 7095, 7504, 9064, 11290, 11330, 11925, 15230, 15550,  
 15590, 17605  
 0230-0800 (We-Mo) same as 0230 Tue.  
 0800-0830 (We-Mo) 6225, 7095, 7504, 9064, 11290, 11330, 15230, 15550,  
 15590, 17605  
 0830-0845 (We-Mo) 6225, 7095, 7504, 9064, 9080, 11290, 11330, 15230, 15550,  
 15590, 17605  
 0845-0945 5320, 6225, 7095, 7504, 9064, 9080, 11290, 11330, 15550, 15590, 17605  
 0945-1100 4460, 5320, 6225, 7095, 7504, 9064, 9080, 11290, 11330, 15550, 15590  
 1100-1130 4460, 4905, 5320, 6225, 7095, 7504, 9064, 9080, 11290, 11330, 15590  
 1130-1735 3220, 4460, 4905, 5320, 6225, 7095, 7504, 9064, 9080, 11290, 11330,  
 15590

ID in Chinese as above. Verification not given directly or through other channels.  
 Theme music is often "The East is Red".

CHINA Radio Peking Home Service, "Chungyang Jenmin Kwangpo Tientai". Second Network.

Transmission Period: MTTSa 2058-0345, 0350-1500

WF 2058-0345, 0350-0600, 0850-1500

Su 2058-1800

2058-2245 3290, 4250, 5075, 6345, 7770, 9020, 10259  
 2245-2330 4250, 5075, 6345, 7770, 9020, 10259  
 2330-0000 5075, 6345, 7190, 9020, 10259  
 0000-0345 (0350 Su) 7190, 9020, 11505, 11730, 15030, 15450  
 0350-0600 (W/F)  
 0350-0715 (MTSS) 7190, 9020, 11505, 11730, 15030, 15450  
 0715-0800 (MTSS) 7190, 9020, 11505, 11730, 15450  
 0800-0900 (MTSS) 6345, 7190, 7339, 7770, 9020, 10259, 11505, 15450  
 0850-1000 (W/F)  
 0900-1000 (MTSS) 5075, 6345, 7190, 7339, 7770, 9020, 10259  
 1000-1133 4250, 5075, 6345, 7190, 7770, 9020, 10259  
 1133-1500 3290, 4250, 5075, 6345, 7770, 9020, 10259  
 1500-1800 (Su) 3290, 4250, 5075, 6345, 9020

ID in Chinese as above. Verification not given directly or through other channels.  
 Theme music is often "The East is Red".

Revised May 1972, per data from I. Ugusa, R. Bundy, L. Magne. Submitted by L. Magne.

I have been receiving material from two or three members which should really be sent to the LOG REPORT editor, Larry Magne. Random notes and observations, even if of new frequencies belong in the LR section, unless part of a larger schedule for a given station. I enjoy receiving such data, but it should appear in LR section.

Members who are interested in particular stations are invited to keep Listener's Notebook supplied with schedule information on those stations. This information can include printed schedules from the stations; but, when possible, should also contain notes from on the air checking of the stations. See, for example, the schedules above.....This note is not an attempt to cut down on members sending in printed schedules, but is an attempt to get more members to check out schedules as much as possible when they are sent to this section. If you can't check them send them anyway - we'll get them checked. (DF)

W.GERMANY Test Broadcasts in ENGLISH from Wertachtal, effective 7 May....  
 0130--0250 to ENA on 6170 DW-Wertachtal noted consistently on 9700 in  
 0345-0405 to Africa 6075 German to SA at 2300-0110; fqy unlisted in  
 0435-0555 to WNA 9765 latest DW-W sked received here. Intense QRM  
 0600-0635 to Africa 15150 from Sofia on this fqy, used continuously by  
 0920-1020 to East Asia 17800 by the Bulgarian station for at least 25 years.  
 2100-2200 to East Asia 9510 (Richard E. Wood) How to win friends...(DF)  
 (Chris Lobdell)

BRAZIL Radio Nacional de Brasilia has indicated it will begin a 24 hr external svc in English on 31 May. (BEC MS)

A FEW RANDOM NOTES (yes, I know, that's what most of the section has been: hi.)

Try for Somali Rep on 9585 at 0330-0400, when the fqy is clear. Watch out for Syria after 0400

R. Ethiopia seems the one now audible in the 0330-0400 period on 6185 kHz, but weak. Fqy clear at this time, but heavy VoA splash from 6190.

The ITU Tentative High Fqy Broadcast Sked has for some time listed a transmitter at Emugu, Nigeria, on 9530 kHz, at 0500-2200. To my knowledge, it has never been reported, nor listed elsewhere. Is it really active on this fqy? Or is this just another of those items that once get "listed" and never seem to get unlisted???

Incidentally, the ITU lists are useful for spotting times when a frequency might be clear of QRM. I believe Gilfer Associates handle them, and that would be the easiest way to obtain them.

Glancing through the summer ITU list as this is being typed, I note a listing for Abu Dhabi on 9620 kHz at 0430 & later. This is a new listing for this quarter, and worth checking in to.

COMMENTS on the 1605-4000 kHz Survey, from Bob Bundy...

2430 kHz, Fukien Front Station.. These do not go straight thru, as previously indicated; but my loggings differ quite a bit from BBC MS

3015, add Pyongyang, JJ svc, ex 4410, probably 0900-1500, //6540

QUESTION How can I hear Luxembourg?...Try 6090 kHz, to 0200 s/off. Tx is 50 kw, and often extremely well heard.

Survey comments continued from last column...

3142½ UNID in survey is Indonesia.  
 3215 RRI Djajapura new fqy, 0900, off before 1345

3235 R.Milne Bay is still here, not 3360.

3259 NHK HS, s/off may be 1400.

3320 UNID in survey is Pyongyang

3450 CHINA s/off around 1730

3500 CHINA, is FS, BBC MS sked seems correct

3560 UNID in survey is Pyongyang

3945 JAPAN-haven't hrd NSE since before Jan.

Fukien Front stn now s/off 1850, was operating later in January. (Bob Bundy)

SWEDEN Till 3 September, Radio Sweden will operate as follows:

To the Far East...

1230-1330 on 15105 in English and Swedish

2015-2115 on 11970 in Russian and English

To Eastern Europe...

0830-0900 on 11780 in Russian

To South Asia...

0445-0615 on 17840 in French/Eng/Swedish

1400-1530 on 15240 in Eng/Swedish/French

To the Middle East...

0930-1030 on 21690 in French and Swedish

1600-1700 on 15240 in English and Swedish

1830-1930 on 11790 in English and Swedish

To Eastern North America...

0000-0230 on 15295 in SS/EE/Sw/SS/EE

1400-1530 on 15310 in Eng/Swedish/French

To Western North America...

0300-0430 on 11705 in French/Eng/Swedish

To Australia/New Zealand...

0515-0615 on 11895 in English and Swedish

To Africa...

1100-1200 on 21690 in English and Swedish

1730-1930 on 15240 in PP/FF/EE/Swedish

To South America & South Western Europe...

0000-0230 on 11705 in SS/PP/Sw/SS/PP

2145-2345 on 11705 in Sw/PP/SS/Sw

All Programs are ½ hour in length. (via Swedish Broadcasting Corporation)

Larry Magne, Ed.  
 NASWA Log Report  
 P.O. Box 2133  
 Mid-City Station  
 Philadelphia, PA 19103 USA

# LOG REPORT

Deadline: June 12, 1972

ABBREVIATIONS: NF new fq; RF reactivated fq; \*0100 s/on; 0100\* s/off; EE English; mx music; nx news; px programs; W woman; M man; rel religious; TC time check; NA nat'l anth or N Am; EGFP exc-good-fair-poor.

- 2307½t INDONESIA Djakarta? 1135-1200 Indo vocals, IS, ID? 1200 (DW)  
 2336 RHODESIA RBC 0400 lang, P, "watch for June peak" (BB)  
 2360 GUATEMALA R. Maya \*1030v SS/Ind dials, rel px //3325, F (JC)  
 2410t N GUINEA R Goroka 1204-1219 Pidgin?, anmts by M, native mx, anmts, TC's, no ID (DW)  
 2425RFRHODESIA RBC vy wk w/RTTY on high side, P (BB) Time? (Ed)  
 2450 N GUINEA R Mt Hagen 1220-1230\* Pidgin, Is mx w/EE lyrics, pops, anmts, ID 1229, then off (DW)  
 3024v INDONESIA Unid 0905-0930, 1010 Indo w/Indo & EE pops //3104, 3142½ to 1011, then not //, P (BBy)  
 3080 INDONESIA? Unid 1235 Indo, mentions Djakarta, UTE QRM, P (BBy)  
 3104 INDONESIA Unid 1006 Indo, nx?, C&W mx, //3024v, 3142½ to 1011, then no longer //, F (BBy)  
 3142½ INDONESIA Unid 1001-1011 Indo, tlk to 1011, then mx, P (BBy)  
 3215 WEST IRIAN (INDONESIA) RRI Djajapura (2nd Px) 0855-1000 Indo, Indo mx, Djajapura ID 0859, RRI IS, West Irian nx, at 0900 // 3905, 6070, but not // at 0940, so 3215 is 2nd Px, while 3905 & 6070 are 1st Px, F (BBy) Note QTH (Ed)  
 3220 NEW GUINEA R Morobe 1106 hrd well w/mx, QRM (DJ)  
 3230 FIJI R Fiji 1340-1400 EE/Fijian, pops, EE ID "R Fiji Nat Px", spl px of election results //3284, P (BBy)  
 3250 S AF SABC 0303 EE, chimes, M anncr, G (RWP)  
 3255 LIBERIA ELBC 2330-0000 EE, ID, P but best 0000a (FH)  
 3260 N GUINEA R Madang 1007-1101\* w/GSTQ, G w/peak 1030 (GLD) 1103\* Pidgin, tlk, instrumentals, anmts, EE ID, GSTQ (DJ) (EGS)  
 3265 GUYANA R Demarara 1040 EE, C&W mx, ID, TC, hi QRM (RWP) 0045/  
 3270xt ECUADOR Cf May LR-1. R Cosmopolita, Ambato, 0325\* P, is HGEJ6 ex-6195 (BB)  
 3284 FIJI R Fiji 1400, P, cf 3230 above (BBy)  
 3285t PHILIPPINES PBS 1046 lang, rel mx, tlks, wk w/QRM (DJ)  
 3285 S AF SABC 0215, 1t mx, ads, ID's, F (MN) Lang? (Ed) RWP  
 3290 GUYANA Action R \*0842-1000, 0155-0445\* EE (BBy, EU, JPR, KS, MN, /  
 3295 GHANA Accra 2100 EE, nx //3350, 3366 at this time (BP)  
 3295v VENEZ R Trujillo 1024, ID, F but strong het (RWP)  
 3300 BURUNDI LV de la Rev 2100\* FF, anmts, NA, Gabon unhrd (BP)  
 3300 GRENADA RG 0120-0206\*, chorals, nx, mx, poor mod (RWP)  
 3325½ GUATEMALA R Maya 1053, GG band mx (TS) Cf 2360, above (Ed)  
 3335 N GUINEA R Wewak 1040-1108 Pidgin, tlks, ID, mx, F (JDT, RWP)  
 3345½t BORNEO Pontiniak 1343-1350 Indo, tlk by M, no ID, RTTY (DW)  
 3375 ANGOLA Em Oficial 2030-2100 PP, orch mx, not //4820 (BP)  
 3384½v BRAZIL RC de Teresina 0400, clear ID after YV off, F (BB)

- 3385 N BRITAIN R Rabaul 1100-1145, SEA chorals w/uke mx, G (RWP)  
 3396 RHODESIA RBC 0415 EE, tlk, P (BB)  
 3396RF NIGERIA NBC Kaduna 0445 Hausa, group chants, F (BB)  
 3930 CAPE VERDE IS R Barlavento 2330-0015 PP, pops, ads, GF (ECSAEM)  
 3945t N HEBRIDES R Vila 0715, vy wk carrier (BB) No modulation? (Ed)  
 3975 ENGLAND BBC 0300-0325, Farsi from 0315, EE ID (DN)  
 3995 SOLOMON IS SIBS 0820-0830 EE, ID, TC, pops, ads (DW) 1010 (RWP)  
 3997 S AF SABC 0000 AFR/EE, G (ECS) 0330 AFR, F (BB) 0435 orch (RWP)  
 4020 CHINA RP 1240 KK, rev mx (TS)  
 4564 UNID 1222, vy wk (TS) Cf May LR-2 (Ed)  
 4701t LAOS Rot Patriot Neut Forces 1224, wk (TS) Likely KK espionage  
 stn...cf May LR-2 (Ed)  
 4734v ECUADOR R Progreso 0515, folk mx, ID, G (RWP) R Nac Progreso.  
 4749 UNID 0400\*, "Venez" & "Nac" hrd, but Colombian NA (GLD)  
 4755 COLOMBIA Em Nuevo Mundo 0510, CARACOL IDs, G (RWP)  
 4765 ECUADOR CRE 0330-0400\* SS, LA mx, Coke ad, nx, NA (CRL, Bly)  
 4765 CONGO RTVG 0500-0542 FF, rel px, nx, loc mx, ID (ECS,MAF) loc  
 mx 2015, P w/CW QRM (AEM)  
 4770v VENEZ R Bolivar 0230 SS, mx, many ID's, G (SP)  
 4749 N KOREA KCBS 1030, martial mx, G (RWP) KK to S Korea list (Ed)  
 4770/2 ECUADOR R Genit 0410-0430\*, LA mx, nx (JDT) 0450, "Musica Ec-  
 uatoriana" beyond 0630 (MAF) Cf May LR-2. Lang is SE (CP) Sorry  
 4775v DOM REP Onda Musical 0100, mx, G (BK) 0220 SS, "Royal Crown"(SE)  
 4775 ECUADOR R El Progreso 0711-0733 SS, Ec mx, TC, poor mod (DW)  
 4777 GABON RTVG 0518, Af drums, chants, F (RWP)  
 4780 VENEZ LV de Carabobo 0145, tlks, IDs (BK)  
 4783 MALI Bamako 0655 FF/Vern, M ancr, "amazing" signal (ECS)  
 4790 VENEZ Ondas Portenas 0055, mx, IDs, unusual strength (FH)  
 4800 LESOTHO RL \*0400-0500+ EE/Vern, N:E 0430, F w/much RTTY (JC)  
 4800 VENEZ R Lara to 0400\*, mx, P (Bly) ECS)  
 4807 ECUADOR R Popular 0510-0530 SS, Andean mx, ID, tlks (RWP,MAF,/  
 4810 ECUADOR R Canal Manabita 0500, mx (MAF)  
 4810 VENEZ R Popular 0000, ads, mx, P (BK)  
 4815 PERU R Atlantida 0415-0457\*, mx, ID (MAF) Note name (Ed)  
 4815 UPPER VOLTA RTvV 0630 FF, ID, IS, nx (ECS) 2300\* FF, nx, mx (AEM)  
 4820 HONDURAS HRVC 0300-0500\* EE, rel px (AEM,GB,RR,KH,BK,RLS,SP)  
 4820 GAMBIA RG 0635-0730 EE/Wolof, chants, BBC nx 0700 (JC,ECS,MN)  
 4820 ECUADOR R Paz y Bien 0920-0940+, Ec mx, many ID's, "Pepsi", E  
 (GLD) TENT \*0927 SS, ID's?, Ec mx, TC, UTE QRM (DW)  
 4820t VENEZ LV de Apure 0905-0927, ID "LV de...", LA QRM \*0927,mx(DW)  
 4832v COSTA RICA R Capital 0200-0435 SS, pops, IDs (ENR,GB,BK,RR)  
 4839 MOLUCCAS RRI Ambon 0906 Indo, tlk //7139 (BBY) 1200 IS (TS)  
 4835 BRAZIL (out of order) Unid 0155-0215 PP, Brz mx, G (ARN)  
 4840 CHINA RP 1215, W tlk, mx (TS) CG/Taiwan via Fukien Fnt list (Ed)  
 4845 BOTSWANA RB \*0400-0510 EE/Vern, lt mx Su, no nx, wk, RTTY (JC)  
 4855 MOZAMBIQUE RCM 0413, W anncr, mx, G but some RTTY (GLD) (Ed)  
 4867 COLOMBIA "LV del..." 0310\*, ID (AVS) Rptd R Reloj Baranquilla/  
 4870 DAHOMEY Cotonou 0517 FF, nx 0530 on Af Conference, odd mod (JC)  
 4875 ECUADOR LV de Esmeraldas 0240, cnty by M, ID, G (FH)  
 4875 S AF SABC \*0358 M-F, \*0430 Sa AFR, hillbilly mx, rel px, G (JC)  
 4880 VENEZ R Universo 0403 SS, IDs, NA, F (LKM,AEM) 0218 SS mx (FH)  
 \*0945-1130, ads, IDs, G (EU)  
 4881v DOM REP R Comercial 0210-0235, IDs, nx, mx, ads (FH,BK)0700\*(EU)  
 4885 COLOMBIA Ondas del Meta 0900-1100, ads, TCs (EU) 0400\* NA (JDT)  
 4885z BRAZIL R Pioneira de Teresina 0815-1000, gd mx, ads, G (ECS,EU)  
 4885t KENYA (Out of order) VoK 0700 Swahili, Af rhythms, M ancr (ECS)  
 4890 HONDURAS R Lux 0400-0504\*, mx, ID, TC's, NA (EU)  
 4890 PAPUA ABC Port Moresby 1000-1130, requests, tlks, nx, G (EU)

- 4890 SENEGAL RS\*0553-0745 FF, drums IS, ID, NA, nx (EU,LKM,AEM) \*
- 4890 VENEZ Rdif Ven 0400, ID, rock (JPR,Bly) \*1000-1130, NA (EU)
- 4895 UNID 0145, LA mx, Peruvian? (DJ) Bare? (Ed)
- 4900 VENEZ R Juventud \*0853-1130, 0430\* SS, pops, IDs, G (ENR,EU,TS)
- 4900 SULAWESI RRI Gorontalo 1400 Indo, nx? by W, loc ID, mx (DW)
- 4905 COLOMBIA Em Atlantico 0000-0400, ads (EU)
- 4908v VENEZUELA YV 0130 SS, "Radiodifusora..." (ARN) R Carora (Ed)
- 4910t ANGOLA RC do Lobito 2250-2320 PP, "Angola" hrd, tlk (AEM)
- 4910 DOM REP R HIN 1030-1130, 2300-0400, ads, TCs, F (EU)
- 4914 CHINA Harbin 0915 KK, tlk, //5950, F (BBy)
- 4915 COLOMBIA R Guatapurí 0200-0459\*, ads, TCs, NA, G (EU)
- 4920 AUSTRALIA VLM4 Brisbane 1030-1130, ABC nx 1100, sports, QRM(EU)
- 4920 HONDURAS R Progreso 0000-0430+, ads, sports (EU,AEM,MAF)
- 4920 VENEZ R Caracas 2300-0700+ wkends, ID's, G (EU) Recently? (Ed)
- 4920 USSR RM 2100-2200 RR/GG, IS, RR, then GG 2130, F (EU)
- 4930 VENEZ R Junin "R 860" 0300 SS, but EE ID by M YVOT/L (KS)
- 4930 DOM REP R Mil 0030 SS, rumba mx, IDs, G (ENR,JPR)
- 4930 ECUADOR R Casa de la Cultura 1045-1130, 2330-0030 mix Mil (EU)
- 4945 S AF SABC/Springbok 0115 EE, ID's, mx (BK) 2340 ads,oldies(AEM)
- 4945 BRAZIL R Ed Braganca 0930 PP, ID, het Colosal (RWP)
- 4945 COLOMBIA R Colosal 0805, SS vocals, ID, P (BBy)
- 4950 SARAWAK RMS 1108 EE, nx, tlks, G (RWP)
- 4955 COLOMBIA R Nac 0230, mx, nx (BK) 0020 SS, tlk, lt mx, IDs(ENR)
- 4960v DOM REP R Antillas 0000 SS, mx, ID's (ENR)
- 4965 COLOMBIA R Santa Fe 0300, LA mx, F (BK)
- 4970 VENEZ R Rumbos 0345 SS, mx, nx, IDs (ENR) 0225-0250 do (EH,BK)
- 4972 CAMEROON Yaounde 2226-2300\* FF, balafon/pop mx, ID (AEM,KS)
- 4972 GUIANA (FR) ORTF Cayenne 0200\* Su FF, ID, IS, LM, NF (ARN)
- 4976 UGANDA Kampala 1930, tlk on women's lib, hymns (AEM)
- 4980 VENEZ Ecos del Torbes 0215-0245 SS, LA mx, opera, GE (BK,EH)
- 4985 MALAYSIA RM Penang 1045 EE, //7294, 9665v, P (BB)
- 4990 VENEZ R Barquismo 0135 SS, LA mx, nx (EH) 0240, E (RWP)
- 4996 BRAZIL R Brazil Central 0820, LA mx, //9755, F (BBy)
- 5010 DOM REP R Cristal 0210 SS, pops, LA mx (EH) 0415 (FH)
- 5017v COLOMBIA Trans Caldas 0600, RCN plugs, IDs (ECS) 0813, ID (BBy)
- 5018v 0417, ID by W (FH) Tx troubles lately (Ed)
- 5030 VENEZ R Reloj Continente 0300-0500\* SS, pops, ID (CRL,Bly,RR)
- 5030 SARAWAK RMS 1150 EE, ancmts, low level (RWP)
- 5038 CENT AF REP Bangui \*0430 FF, pops, requests, G (JC)
- 5040 BURMA BBS 1450-1501 EE, nx, ID, mx, intl sports, G (DW,RR)
- 5040 GEORGIAN SSR Tbilisi \*0200 RR, IS, NA (ECS)
- 5041 PORT GUINEA Em Oficial \*0702 PP, NA, sluggish PP LM, FG (JC)
- 5045t COOK IS Rarotonga 0715, weak carrier, P (BB) Px hrd? (Ed)
- 5047 TOGO Lome \*0530 FF, IS, NA, tlk, US pops (Bly)
- 5047 JAVA RRI Jogjakarta 1150 EE, nx, P (RWP)
- 5050 VENEZ R Mundial 0325, easy mx, IDs, nx (JDT)
- 5052t SINGAPORE RS 1130 EE, financial nx (RWP)
- 5084 SUMATRA RRI Medan 2315 Indo, tlk, W singer, SEA mx, P (AEM)
- 5095v COLOMBIA R Sutatenza 0000 SS, nx, LA mx, pops (EH)
- 5273 PARAGUAY R Nac 0030, LL, P, 100 kw? (FH) Nominally, yes (Ed)
- 5935t TIBET Lhasa ("Hsi Tsang Jenmin Kwangpo Tientai"-Ed) 2340-0005 lang, mx, no RP IS 2400, weak, fade pattern suggests Asia rather than VoA feeder (ARN) Try for loc ID 2359 (Ed)
- 5950 NICARAGUA R Zelaya 0120, pops, vy wk (JDT)
- 5955 GUATEMALA TGNA 0325-0350, "Back to the Bible", ID (DW,Bly)
- 5962RF COLOMBIA LV de Bogota 0230-0245 SS, IDs (ARN) 0340-0400 (DW)
- 5965 BRAZIL R Guaiha 2310 PP, tlk, ID, G (FH)
- 5970 PERU R El Sol 0700-1030, IDs, rock, ads, QRM (JPR,EU)

- 5970 CANADA CBC Northern Svc 0435 EE, mx, rel px, P (CAW)  
 5980 EL SALVADOR R Nac 0500\* SS, semi-clas mx, IDs, NA (LKM)  
 5981 PERU R Panamericana 0458 SS, after YSS off, IDs, jingle (RWP)  
 5985 N GUINEA Cf May LR-4. Is ABC ed bcast (BBy) Via VH9RA? (Ed)  
 5987t SULAWESI Manado (list-Ed) 1000, M host, vy wk, useless (ECS)  
 6006 COSTA RICA R Reloj 1122 SS, ID, LA mx, F (AAM)  
 6010 CANADA CJOX 0312-0331, pops, IDs, ads, G but QRN (KS)  
 6010 W GERMANY DW 0530 GG, mx, tlk, amnts, ID, G (CAW) Test? (Ed)  
 601ORF PORTUGAL DW Sines (RTE tx) 2245-2345 SC, //7275,9620,ex5995(BB)  
 601ONF ECUADOR HCJB 0715-1000 EE/Eu/Pac, //9745,11765,15115,ex5960(BB)  
 6015 COLOMBIA R Mira 0050, live sports, F but het (RWP)  
 6015 IVORY COAST Abidjan 1100 FF, choral rel svc to 1150 Su, F (JC)  
 6020 PERU R Victoria 0550-0630, "Peru" hrd oft, "Victoria" IDs (RWP)  
 6025 PORTUGAL Vo the West 0200 EE, cmty on 'Nam & Hoover, nx (JR,PA)  
 6025 NIGERIA NBC Enugu 2130 EE, TC, ID, clear when Port off (BP)  
 6035 POLAND PR 0317-0325 EE/Polish/NA, EE to 0325 //6135 (CRL)  
 6040 COLOMBIA LV del Tolima 0250 SS, LA mx, IDs, tlks, Dubai no longer found (FH,GLD,JDT,CRL) 0505\*, NA (RWP) 6059 (FH)  
 6040t UNITED ARAB AMIRATES Dubai 0250, chants, mx (Bly) Recently? (Ed)  
 604ONF PORTUGAL DW Sines 0800-0825 SC //7130,9605, ex-5995, P (BB)  
 604ONF INDONESIA Unid RRI 1215 Indo, Nat Px, not RRI Djkt 6045 (JC)  
 6045 PERU R Santa Rosa 0230, Andean mx (Bly) 0430, ID (MAF)  
 6050 ENGLAND BBC 0300 EE, nx, cmty under HCJB (FH)  
 6055 RWANDA Kigali \*0330 FF, Af chorals, ancmts (RWP) 0430 FF (BB)  
 6070 CANADA CFRX 0300 EE (RR) 1300 (EH) 1500 (CAW) 0750 (CG)  
 607ORF WEST IRIAN RRI Djajapura 0800, blocking Nx & Mx Stn (BBy)  
 6080 S AF RSA \*2328 EE, IS, nx (CAW) 0135 EE, nx (EH) 0236, nx (PA)  
 6080 MALAYSIA BBC 2330 lang, EE ID, LL, G but QRN RSA (ARN)  
 6082 PERU R Nac Lima 0505\*, LA pops, IDs (SK)  
 6090 AUSTRALIA ABC Sydney 1215, pops (JDT) PA  
 6090 LUX RL 0130-0200\* EE, pops, ID, "Daily Mirror" nx 0200 (MN,BK)  
 6092 CAMBODIA RNK 1105-1145 FF, balalaika mx, PF (DJ,RWP,AAM)  
 6095 COLOMBIA LV del Centro 0500-0535, nice SS mx, chimes, ID's (RWP)  
 6095 BRAZIL Rdif Sao Paulo 0025 PP, LA mx, G clear sig (EH)  
 6100 W GERMANY DW 0210 GG, E (BK) 0030 GG, comedy, mx (EH)  
 6110 ENGLAND BBC 0210 EE WS, nx (BK) WS/ECNA \*2245-0415\*, 9510 \*0000-0330\*, 9580 \*2115-0330\*, 11780 \*2115-0330\*, 15140 \*2115-0030\* (BBC)/  
 6115 COLOMBIA LV del Llano 0345, IDs, mx, G (GLD)  
 6120 VENEZ R Angostura 0030, mix YN (RWP) Bitters, hi (Ed)  
 6120 SWITZ SBC 0130-0210, 1/2 mw //9535,11715,15305 (DJM,BK,DN)  
 6130 CANADA CHNX 0000-0210 EE, mx, wx, nx (GB,BK)  
 6130t LAOS Vientiane 1220, low lvl Sats, W w/As mx, no ID (RWP)  
 6135 CHILE R Univ Concepcion 1135 SS, lt LA orch mx, M anc, P (RWP)  
 6140 COLOMBIA R El Sol 0030 SS, ID (ARN) 0320-0425 (RWP) 0728(BR,JDT)  
 CARACOL stn (RWP) Apparently 24h sked (BP)  
 6140 SPAIN RNE 0120 EE, mx, cmty (SP) 0200-0219 EE, G (PA,BK)  
 6140 AUSTRALIA ABC Perth 1205-1230 EE, nx, pops (JDT)  
 6145 NIGERIA Calabar 0600 EE, nx, F (MN)  
 6150 COSTA RICA R Atena 0039 SS, tlk, ID, pops, "big het" (RWP)  
 6155 AUSTRIA ORF \*0200 GG, but EE ID, IS (BK,RLS)  
 6155t HAITI R Citadelle 0615 FF, pops, tlks during mx, M anc, P (ECS)  
 6155 SWAZILAND SR 0417-0447, pops, C&W (JDT)  
 6160 COLOMBIA Em Nueva Grenada 0000 SS, IDs, nx, G (RWP) 12 yrs ago this was Fb in Fla and much enjoyed by Colomb students (Ed)  
 6160 CANADA Cf May LR-6. SK's 0945 CK s/b CKZN, Newfoundland, wx, TCs, LM, QSL-ed. Ye ed needs new glasses, hi (Ed) (RWP)  
 6165 S VIETNAM VTVN 1135, chants (RWP) 1130 mx, W anc (JDT) 1215/  
 6170 W GERMANY DW-W 0130 EE/ECNA, //6080,6075,9735 (CRL) 1/2 mw (Ed)

- 6175 PERU R Tahuantsuyo 0435, SS oldies, ID, P, unhrd fm 4/18 (RWP)  
 6180 GUATEMALA LV de Guat 0040 SS, LM, ID, overmod, QRM (DJ)  
 O310, pops, IDs, F (FH) 0457\*, ID (MAF)  
 6185 ETHIOPIA RE 0415 Amharic, F (BB)  
 6190 MORROCO Sab'uyun 0600, "tear-jerker mx", wailing, flutes (RWP)  
 6190 JAPAN Cf May LR-6. Unid JJ to 0845\* //6005 is NHK HSI (BBy)  
 NHK Sendai 1st Network likely (HMA)  
 6195 S AF SABC 0435 EE, ad, TC, pops, G (FH) Springbok Svc (Ed)  
 6195 BRAZIL Em Continental Rio 1 (list) 0155, sports, wk, QRM (MAF)  
 6200 ALBANIA RT 0334-0357\* EE/NA, ID, nx, tlks, F(CAW) Do, G (RLS)  
 6200NF CLANDESTINE (BULGARIA) Our Radio 0601-0625 Turkish, nx by M,  
 ID 0612, wk w/QRM, QRN, seems //9500v (LM)  
 6204% INT WATERS RNI 2236 EE, ID (CRL) 0415-0600 EE/DD (MAF,RWP,MN)  
 6294% UNID 2035 KK, F, KCBS? (BBy) //6600v? (Ed) 5/5  
 6302 N VIETNAM Cf May LR-6. Tay Bac is Autonomous Region in western  
 NVN, capital Son La, & includes Dien Bien Phu (GH) Tnx! (Ed)  
 6440 CHINA RP 2015 CC, 2 x 3220 HSI likely, //3220,6225, P (BBy)  
 6520 N GUINEA R Madang (2x3260) 2005, drums, loc mx, mix RP,P(BBy)  
 6540 N KOREA Cf May LR-6. KCBS\*0900-1500\* JJ //3015 still here(BBy)  
 6955 CHINA Cf May LR-6. RP \*0930-1530\* JJ still here //9965 (BBy,LM)  
 7014%v UNID 1115 lang, F, maybe VNUFK (BB) Agree, via VoV tx (Ed)  
 7065 ALBANIA RT 0015 EE/NA, nx, tlk, cmty, vy stg (EH) //9780 (Ed)  
 7107 THAILAND Thai TV Co 1140 lang, M tlk, G oft (ECS)  
 7131 TAIWAN BED7 1156-1231, CC mx, W anc (JDT) Thai/VV list (Ed)  
 7140NF AUSTRALIA RA 1100-1500 EE/As ex-7185, F (BB)  
 7160 FRANCE ORTF \*0500 FF, IS, ID, nx, F (RWP) 0515-0545\* EE (JDT,BMS)  
 7180 SABAH RM Kota Kinabalu 1015-1127 EE/dial, RM ID, nx, mx, ARO  
 QRM, QRN, P, //7240 (yet poorer) (GLD,AVS) Tent ditto (RWP)  
 7190 CHINA RP HS2 1030-1200 CC, Ceylon unhrd here (ECS)  
 7210 SWITZ IORC 0609, medical tlk, F (PA) Is this station hrd dur-  
 ing disasters, or solely during tests? (Ed)  
 7215 ANGOLA R Ecclesia 0305-0320 PP, oldies, ID (RWP) 2230-2330+,  
 clas mx, few annts, Polar path (BP) Try Asia fm here, Bob! (Ed)  
 7225 PHILIPPINES FEBC 1210 EE, rel px, strong (RWP)  
 7225 ISRAEL IBA 0400-0415 RR, 100 kw, //9009, F (BB)  
 7230 JAPAN Cf May LR-7. NHK HS 2000 JJ here, not NSB (BBy)  
 7230 ENGLAND BBC \*0530 GG, nx, F (LKM)  
 7233NFv NIGERIA ECSBGS Enugu \*0500-0515 EE ex-7301v, nx, ID,pops(RWP,BB)  
 7235 INDIA AIR 2305 EE, nx, F (AEM)  
 7240 NORWAY Tromsø presumed \*0500, EE ID, mx, P, AROs, 4/6 only (GLD)  
 7245 ANGOLA Em Oficial 0030, RFE off (BP) 0600 PP, nx, F, AROs (RWP)  
 7245 S VIETNAM VTVN 1100, Forces Px, W w/Western-type VV mx, E (ECS)  
 7250v ALGERIA RTVA 0610 AA, chants, G (RWP)  
 7255 NIGERIA VoN 0600-0630 EE, nx 0600, ID, mx, tlks (RWP,RR,MN)  
 7285 POLAND PR 0220, Pol cult, ID, F (RK) Lang? (Ed) 0300 EE, E (CG)  
 7285 W GERMANY DW-W 0700-0910 GG/Pac test, IDs, F (BB) ½ mw (Ed)  
 7295 MONACO TWR 0730 EE, "The Way to Life Hour" (CG)  
 7300 ALBANIA RT \*0230 EE/NA, G (JPR) Still //6200 (Ed)  
 7305 CLANDESTINE (CHINA) VoMalayan Rev 2220 Malay, tlk, jammed (DJ)  
 7310 LAOS VoPathet Lao 2225 Laotian, martial mx (IS), tlk, F (DJ)  
 7325 ENGLAND BBC 2345 EE, requests, strong (EH)  
 7330 USSR RM 1055, clas mx (TS) RM 2nd Px "Mayak" w/15 //s, per  
 BBC MS 53 page new Soviet skeds!! See LN Section (Ed)  
 7500 AUSTRALIA VNG 1249 pips (1 per second) (RWP)  
 8331v CLANDESTINE (RUMANIA) R Free Portugal, Cluj, \*2320-2350\*PP, F  
 //12005v (BB) often undermodulated (Ed)  
 8777 CHINA Peihai 1118 CC, tlk, As mx (SK)  
 9005RFv IRAN RI 2100-2128\* Farsi, ME mx, //15084 w/HS relay (ECS,LM)

- 9009 ISRAEL IBA 2120 EE, F (JPR) Now 2035-2115 EE with no break // 9725,9625,6170 to Eu/AF, then FF/Eu on same fqs (BBC MS)
- 9065% ESPIONAGE (E GERMANY) DSD Burg 2230 GG, "X-ray Delta", F (LM)
- 9304 ESPIONAGE Unid 1905\* EE, W "count zero..." thrice, vocals (BBy)
- 9333v CHINA RP 1855\* RR, tlk, CC mx, F (BBy) Bob, have you noticed any RP RR px played backwards? Like 11860 \*0400-0455\* (Ed)
- 9423 CLANDESTINE (CHINA) Vo the Thai People 1030 Thai, "favorite"(ECS)
- 9475 ARE R Cairo \*0200-0330\* EE (SP,BK,CAW,MN,JR,RLS,RR)
- 9500RF E GERMANY RBI 0045-0130 GG/SA ex-11785?, P (BB) (CAW)
- 9505 DOM REP RTVD 2300 SS (RWP) 0030 ID (AEM) 0132 LA mx(RWP)0450 /
- 9505 GUATEMALA TGNA 0300-0340 EE, rel px, mx, nx, E (PA,KH)
- 9505 JAPAN NHK \*1000 EE, Gen Svc, nx to NA, G (ORL)
- 9510 VENEZ R Barquisimeto 2350, pops (CG) 0140-0300\* SS tlk,ads(JC)
- 9510v RUMANIA RB \*0300, nx, QRM BBC, P (DN) EE list (Ed)
- 9510 ALGERIA Voice of the Storm 1930\* AA, ID, mx (ARM)
- 9515NF SPAIN RNE \*0900 SS, new Svc, QRM KCBS (BP) \*0900-2130\* Sundays for Spaniards/Eu //11920,9620,9570,7190,7105,6140,6065 (BBC MS)
- 9515 TURKEY VoT 0515, wk, QRM (RR) Not list HS, presume AA FS (Ed)
- 9515NFvN KOREA KCBS \*1200-1225 EE/SEA, new svc, //15149v, P (LM)
- 9525RF POLAND PR 0400-0430 SS/LA ex-6135 //7285, P (BB)
- 9525 INDIA AIR Aligarh 1810 EE, nx, loc mx (AEM) 2100 EE, nx, G (ARN)
- 9535 SWITZ SBC 0130-0200 EE (Bly,KH)
- 9540 CZECH RP 0352\* EE/WCNA, health px, lbx (CAW) (JC,KH)
- 9540 N ZEALAND RNZ 0555-0600 EE/Pac Is, BBC nx, variety px //11780 /
- 9540 POLAND PR 2230\*, nx, mx, F (RK) Italian list (BBC MS)
- 9545 W GERMANY DW 0436, nx, cmt, mx, E (RK) EE/WCNA list (Ed)
- 9550 AUSTRALIA RA \*1330 EE, tlk, mx (CG) Unlist RA Summer sked (Ed)
- 9550RF BELGIUM RTB\*2215-0100\*EE/FF/DD/NA //15235/SA ex-6125(BB,FP,CAW)
- 9555NF MONACO TWR \*1830 RR ex-9585 (BP)
- 9555NFvBULGARIA RS 0440-0505 Greek ex-9550, IDs,new day(Su)for Grk(LM)
- 9560 S AF RSA 2330 EE/NA, nx //11970,9695,6080 (SP)
- 9562 PERU R Nac 1045 SS, typical SS format, gd condx into SA (ECS)
- 9565t CLANDESTINE (TAIWAN?) Nx & Mx Stn 1045, oriental, weak mx, W anncr, but not listed time (ECS) Dunno. Nx & Mx has 80' px in CC s/on/off w/Dvorak's "New World Symphony"... (Ed)
- 9565 W GERMANY DW-W Irr, //11865W/SA, E (BB) Time? Lang? (Ed)
- 9570v RUMANIA RB 0228\* EE, DX, PF (RLS) 0300 EE, nx (SP)
- 9570v NIGERIA RTV Kaduna 0620 EE, requests, over Warsaw HS (BP)
- 9570 AUSTRALIA RA 0714 EE/Eu, ID, nx, DX, lbx (CAW) 1208, nx, mx (WT)
- 9570 QATAR Doha \*0230 AA, tlks, IS, QRM Bucharest, wk (RWP) Tent 0300, faint AA mx under Bucharest, strain lvl (KS)
- 9572 TAIWAN BED91 \*1030 Indo, IS, CC ID, pops, jammed, QRM RA, cf May LR-8 (BBy) Chinese apparently jam all Taiwan xmissions (Ed)
- 9575 ITALY RAI 0100-0200 EE (KH)
- 9580 ASCENSION IS BBC 2130-0000 EE WS/ECNA, then UK tx, G (BB)
- 9585 FINLAND OYA 0200-0230 EE (KH) Still here for summer? (Ed)
- 9587% ETHIOPIA RE 0645 lang, soap opera, wk (ECS)
- 9588t VIETNAM VoV? 1036-1130 VV, "Hanoi" hrd?, P 4/21 (BBy) Hue?(Ed)
- 9600 BLACK CLANDESTINE (USSR) R Sparks 0945-0951 CC, P (BB)
- 9605RF ECUADOR HCJB 0300 EE ex-9615, DX Party Line (CRL)
- 9610 AUSTRALIA ABC Perth 1107-1117 EE, nx, play, F (CP)
- 9615 VATICAN VR \*0050 EE/NA, bells, nx, mx, tlk //11725(AEL,CAW,BK)
- 9620 YUGOSLAVIA RB \*2200 EE, nx, //6100 (MN) Also //12200 (Ed)
- 9620 FRANCE ORTF 2030-2100 EE, nx, mx, asks for rpts (ARN)
- 9625 ISRAEL IBA 2045-2100 EE, G (ARN,MN) Now \*2035-2115\*,cf 9009(Ed)
- 9630 CZECH RP 0115 EE/ECNA, F w/QRM de CBC (BK)
- 9640 S KOREA VoFK 0900-0930 EE (LKM,KH) \*1200 EE, new svc, E (RWP)
- 9645 COSTA RICA TIFC 0300-0400\* EE, rel px, F (AEL,MN)

- 9650 GUINEA R Conakry 0300 FF, Af mx, amnts (Bly)  
 9650 S AF SABC 0530 AFR, over BBC AA Svc, seldom hrd (BP)  
 9660 PORTUGAL IBRA via RTE tx 1934-2000 EE, rel px (KS)  
 9660 ANGOLA A Voz de Angola 0600-0625 PP, tlk, soft mx, IDs (KS)  
 9670 PORTUGAL RTE 1300\*& 1740 EE, Greek mx, nx (AEM) Actually, isn't this the px of the Greek Tourist Board via RTE tx? (Ed)  
 9675 POLAND PR 0630 EE/Eu, F but QRM VoA (MN)  
 9675 UNID 2125 lang, tlk, piano IS, another lang, doubt Warsaw (DJ) Why? Is sked Warsaw in Polish \*2130, Chopin piano IS (Ed)  
 9685v RUMANIA RB 0315 EE, nx, cmt, F (CAW)  
 9690v UNITED ARAB AMIRATES Abu Dhabi 1255-1345 AA, chants, pol tlk, P (BB,RWP,BP) 1845-1930, nx?, QRM RFE/AIR, irr 1930+ (AVS,BP)  
 9695 S AF RSA 0140 EE, mx, tlk (CAW) 0205 EE, interview, F (RLS)  
 9700NF RWANDA DW 2300-0110 GG/SA, //15410 ex-17800, P (BB) Wertachtal 1/2 mw also rptd testing eves here and on 9695 (Ed)  
 9700 BULGARIA 0400-0410 EE, nx, cmt, mx, G (KH,RK,CAW)  
 9700 FRANCE ORTF \*0000, FF ID, under Sofia (DN) NF? PP list (Ed)  
 9705t INDIA AIR 1230 Nepali?, strange IS, chants (ECS) BBC MS rpts hearing Bangladesh 1430 on 9704v, is this //17934v? (Ed)  
 9705 MEXICO RM 0025, EE ID (KH)  
 9715 NETHERLANDS RN 2200-2220 EE, DXJB, mx (DN) Still //11730L (Ed)  
 9715 PHILIPPINES FEBC 1700-1705\* RR, ID, NA, G (RR,BLY)  
 9720 CEYLON CeBC 1650, rel px, G (RR) NF for EE/As? (Ed)  
 9720 S AF Springbok R 1350 EE, "Tea" px (ECS) 0530 (BP)  
 9725 ETHIOPIA ETLF 0325, mx, P (PA) NF for FF? (Ed)  
 9725 MALAYSIA BBC 1055 Indo, G (AVS)  
 9730 NETH ANT TWR 1033 SS, rel tlk, mx, G (AAM) (BMS)  
 9730 E GERMANY RBI \*0100-0130 EE, nx (SP,WT) 0205 EE (RLS) \*0230/  
 9730 ETHIOPIA ETLF 0400 EE/Af, nx, F (MN)  
 9735 W GERMANY DW 0140 EE, mx, nx of Canton Trade Fair (CAW)  
 9741xv ARGENTINA R Splendid 0215 SS, tlk, P w/QRM both sides (BB)  
 9750RF SWITZ SBC 0430-0630 to WCNA, ex-6120, //11715, ex-9535, G (BB)  
 9760NF AUSTRALIA RA 1130-1330 Cantonese/GC ex-6100, Darwin?, P (BB)  
 9765RF W GERMANY DW 1620-1720 Farsi ex-7130, P (BB)  
 9770v JAVA RRI Djakarta 1000 Indo, before 4V on, F (BB)  
 9770v HAITI 4VEH 1230 EE, "Psychology for Living" (CG)  
 9770 AUSTRIA ORF 0124, travel px, G (RLS) 2354 GG, US jazz, G (AAM)  
 9770 NETH ANT RN 0800-0920 DD/Pac, G (BB) Here for a while (Ed)  
 9780 ALBANIA RT 0016-0028\* EE, G (GB,PA) 0230 SS (BK) \*0630, F (RK) Lang? Not list BBC MS (Ed)  
 9780 ALBANIA R Peking relay via RT tx \*0100 EE, nx (WT)  
 9790NF BULGARIA RS 2330 Bulg, tlks, G, NF?, ID, is not Tirana (JC) Odd, Sofia (exc 7670) usu stays in-band; must QFM Tirana SS (Ed)  
 9805 ARE R Cairo 2114, mx, "changed langs", E (PA) Is sked 2030-2145 GG, 2145-2300 EE (BBC MS) Maybe Arabic by Radio? (Ed)  
 9833 HUNGARY RB 0100 EE (KH) 0430 EE, tlk, FG (BK)  
 9867 UNID ASIAN 1340, 4/27, open carrier to 1345, wk W voice, 1355 f/o, no doubt oriental (ECS) Tay Bac to 1400\*? (Ed)  
 9875 UNID 1126, W tlk, some mx (TS) Again, maybe Tay Bac?? (Ed)  
 9880 CHINA RP 1118, mx (TS) Khmer list (BBC MS)  
 9945 CHINA RP 1142, W tlk (TS) VV list (BBC MS) (Ed)  
 9965RF CHINA RP \*0930-1530\* JJ, tlks, mx (LM,TS) Add to BBC MS sked/  
 9988v CAMBODIA VNUFK 1155 Khmer, SEA mx (ECS,RWP) 1224\*, W anncr, mx (TS) 1224\* again? Recently changed to 1200\*... (Ed)  
 10000 ARGENTINA LOL 2326-2334 SS, ticks, CW/W voice IDs (FH,DJ)  
 10000 UNID 2030 AA, P under WWV (AEM) KCBS KK HS rptd 9998v (Ed)  
 10004 USSR RKM Irkutsk 2330 (FH)

- 10029% CUBA R Rebelde (list) 0840-1010 SS 17 x 590MW, ID's as "RHC"  
but is not //RHC SW outlets, //10200,11400, SS mx, P (LM)
- 10037 UNID 1145 EE, nx, then VV 1200, wk (ECS) VOLMET? (Ed)
- 10146v N VIETNAM VoV 1240 Indonesian, nx by W (ECS)
- 10217v VIETNAM Liberation R 1230 VV HS, //7416, 0915-1200, haunting  
VV mx, W&M annrcs, many musical ID's, vy unstable tx, G (ECS,LM)
- 10726v ESPIONAGE (TAIWAN?) 1130,1230 CC, CC pops, W reading # groups,  
//11336v, varying ID's, jammed, \*1115-1136\* on // (TS,LM)
- 11290 CHINA RP HSI 1230 CC, opera (TS) Not Urumchi (Ed)
- 11323% JAVA R Angkatan Udara 1210-1230, W hosting nice mx, G (ECS,TS)
- 11330 CHINA RP HSI 1255 CC, opera (TS)
- 11355 UNID 2045 AA, rapid AA martial tune, P (AEM) Likely KCBS KK  
HS again, varies around 11350 with sloppy tx (Ed)
- 11400 CUBA R Rebelde 1015-1040 SS 19x600MW, best yet, F//10200 (LM)
- 11412v CHINA CPA \*1100 CC, "EIR", ID's by W, dict nx, was 11414 (LM)
- 11515RF CHINA RP 2015 CC/Eu/Af ex-6955?, //9020,7470,7035, G (BBY)
- 11577 UNID 2045, flute or such instr mx 4/27 (DJ) Espionage? (Ed)
- 11630 ARE R Cairo 2100 AA, chants, G (BK) 0200, ID, F (JPR)AA(BBCMS)
- 11695v CLANDESTINE (BULGARIA) Courier of Iran \*1430 Kurdish, anth,  
W&M tlk, some mx (KS) 1710 Azerbaijani to 1810\* Farsi, G (BK)
- 11705 SWEDEN RS 0330-0400 EE/WCNA, nx (BLY,BB) 0430\* Swedish (LKM)
- 11710NFV VENEZ R Nac 1345 11712, clas piano mx, QRM Habana 11760!(ECS)  
2330-2340 SS, clas mx, ID, FG (ARN,AAM) ex-11725 (ECS,ARN,AAM)
- 11710 AUSTRALIA RA 1143 EE/ECNA, nx, Nx Focus, G (CAW)
- 11710 INDIA AIR \*2245 EE (ARN)
- 11710 N CALEDONIA ORTF 1019 FF, concert mx, amnts, //9510 (CRL)
- 11715 SWITZ SBC 0136, nx (WT) Now EE \*0145-0215 (SBC)
- 11725 VATICAN VR 0053 EE/NA, rel nx (WT) //15420 (Ed)
- 11730 NETH ANT RN \*0200-0320\* EE/ECNA, nx, mx, DXJB (RLS, JR, WT)
- 11730NF UZBEK SSR R Tashkent\*1200-1230, G (BB) //15115,11925 (BBC MS)
- 11735RF NORWAY RN \*0300-0430\* Norw/EE/WCNA, also\*0500 ex-9550, P (BB)
- 11740NF CUBA REC 1100-1200 Creole/Haiti ex-6060 (BB) Not hrd here (Ed)
- 11740 INDIA AIR GOS 2210-2215 EE, nx, ID (ARN)
- 11745 ECUADOR HCJB 0020 EE, DX (SP) 0300 EE, DX (JR) //9605 (CRL)
- 11740NF CEYLON (out-of-order) CeBC 1030-1130 EE/SEA //17830,15120, G,  
VoA tx? (BB) Dunno what the policy is in Ceylon (Ed)
- 11755yv ARGENTINA R El Mundo 0200 SS, futebol, P, beware Moscow (BB)
- 11760 CUBA RHC 2200-2210 SS, nx (DN) Still degrading 25 MB (Ed)
- 11765RF ECUADOR HCJB 0530-0600 Swedish ex-11915 //6010 etc, G (BB)
- 11770 MEXICO RM 1524-1600\* SS, "La Paloma" & nice SS mx, FG (JC,AAM)
- 11770NF BELGIUM RTVB 0615\* ex-11815, FF pops (BP)
- 11775 INDIA AIR Delhi \*1000-1100\* EE/Pac, nx, folk mx, cmtly (CRL)
- 11775RF RUMANIA RB 1945 EE/Eu ex-11940, G (LM)
- 11780 N ZEALAND RNZ \*0600-0845\* EE/Pac Is //9540 (JC,MN,CG,LKM)
- 11780v MOZAMBIQUE RCM 0848, mx, P when RNZ off (MN)
- 11785 W GERMANY DW-W 1600 GG, ID, //11795, F (BB) (CRL)
- 11790RF SWEDEN RS 1830-1900 EE/ME ex-11705, //15240 (BB,CRL) ex11780/  
11795RF W GERMANY DW 1120-1220 JJ ex-11850 //11810,17845,21650 (BB)
- 11800 ETHIOPIA ETFL 0445-0525 FF/Af, F (BB)
- 11800 CANARY IS RNE \*1956 SS, ID, F (AAM) 0500\*, clas mx, NA (LKM)
- 11805 SWEDEN RS-Grimeton \*0000-0030 Swedish, then EE, //15295, nx,  
F (CRL,GLD) 0200 EE, much poorer (GLD) 30 kw PTP tx (SCDX)
- 11810RF W GERMANY DW 1120-1220 JJ ex-15225 //11795 etc, P (BB)
- 11810 ITALY RAI \*0100 EE/NA, nx, mx, into SS 0120, G (BMS,GB)
- 11810 INDIA AIR \*1330 EE/SEA, nx, E daily (CG)
- 11815 NETH ANT TWR 0100-0130\* EE, rel px, DX (GB,KH,CG) 11817 (CG)
- 11815 JAPAN NHK \*1300 EE, nx (CG)
- 11820 MEXICO El Heraldo de Sonora 1420-1800 SS, ads, mx (BLY,BK,GC)

- 11820 NETH ANT TWR 1235\* EE, ID, NA, G (AAM)  
 11825v TAHITI ORTF \*0300-0500 Tahitian, 0500 FF, Tahitian Is mx, M  
 ancor, messages, Banque d'Indochine ads, P w/RBI QRM (AEL,LM)  
 11825NF E GERMANY RBI 0330-0415 EE/WCNA //11970, 0415-0500 GG/WCNA  
 //11970, F obliterating Tahiti (BB,LM)  
 11835 HAITI 4VEJ de 4VEH 1212 EE, nx, wx, F (CAW) 2330-0000 EE (KH)  
 11835 URUGUAY R El Espectador 0245, seeming ID as "R El Sport" (ARN)  
 0900-0950 from RTVA off and 4VEJ on, ads, nx, rare here (BP)  
 11840 PORTUGAL VoW 0305 EE (KH)  
 11840 POLAND PR 0325\* EE (TS)  
 11840 AUSTRALIA RA \*1800 EE, IS, F, to Pac Is (DJM) //9580,9540(BBCMS)  
 11845RF CANADA CBC 2115-2155 EE/Eu ex-11720, E (BB)  
 11845 KUWAIT RK 1912 EE, sports, G (AAM)  
 11845NF SAUDI ARABIA RB allegedly here 1800-1830+ under Kuwait acc to an  
 Indian DXer and a Dutch DXer in SCDX. If true, is a new SWBC  
 country. So far, unhrd in NA (Ed) Is also AA lang.  
 11850v GHANA RG\*2000-2100\*EE/NA, nx, Af mx, variety, G (PA,KH,BK,RLS)  
 11850 W GERMANY DW-W 1840 GG, ID, B'oven mx (CRL) 1938 GG, nx (AAM)  
 11850 USSR R Vilnius 0038 EE, tlk, E (SP) RV now EE 2230-2300 Sa/Su  
 only & Lith M-F to NA/Eu, plus Lith/NA 0030-0100 (BBC MS)  
 11855 SAUDI ARABIA Jiddah 1955-2100 EE/FF, IDs, nx, jam QRM (EH,ARN)  
 11855NF FRANCE ORTF 0515-0545 EE/Af, test, G (BB)  
 11855RF BRAZIL R America 2235 PP, ID, mx (ARN)  
 11860RF NORWAY RN\*0100-0230\*/S As ex-9610, P (BB)  
 11865 W GERMANY DW (-W?) 2311 GG, G (GLD)  
 11870NF E GERMANY RBI 0445-0530 EE/Af, new sked (ex-0615-0700?), F(BB)  
 11875NF PORTUGAL EN 1600 PP ex-11935, sports (BB) An RL fq again?(Ed)  
 11875RF NICARAGUA Rdif Nac 2110 SS, symph mx (EH) 0015, E (Bly) 0334-  
 0355, opera, pops, G (PA,CG) Reactivated after coup d'etat(Ed)  
 11875v ANGOLA Em Oficial\*1457-1517 EE/FF, IS, mx, QRM YNN (ARN,RR)  
 11890 E GERMANY RBI 0245 EE, nx, G (BK) 0335 EE, nx (TS)  
 11895RF SWEDEN RS 0515-0545 EE/Pac ex-9715, P (BB)  
 11895NF FRANCE ORTF 0100-0200 SS/LA //11910,11965, G (BB)  
 11900 MALAYSIA VoM 0710 EE, tlk, QRM (MN) 1120 lang, mx, nx, ID (JDT)  
 11900 USSR R Kiev 0043-0100\* EE, mx, VE Day, E (GB,WT) EE/Am Su/Tu/F  
 0030-0100 & 0330-0400 //12000,9665 & 9600 (0030)/7205 (0330)(BBC)  
 11920 IVORY COAST Abidjan 1830-1915 EE, nx, pops (KS,PA,MN)2245(JPR)  
 11920 PHILIPPINES FEBC 1330 EE, rel px, lbx, P (OG,MN)  
 11920NF ALGERIA Vo the Storm \*1830-1932\* AA, IDs, exhortations,G (LM)  
 11925 SPAIN RNE 0114, mx, art (WT) 0200-0240\* EE, mx, G (KH,RLS)  
 11925 UZBEK SSR R Tashkent 1203 EE, nx, F (AAM) 1200 EE, P (JPR)  
 1400 EE, repeat of 1200, P (JPR,MN) //15115,11730 (BBC MS)  
 11930RF CUBA RHC 0200-0240 EE/Am ex-9680 //11815 (BB,LM) 1632 SS(JDT)  
 11930NF AUSTRIA ORF 1200-1400 GG/Eu ex-11785, P under RHC (BB)  
 11930 FRANCE ORTF 0515-0537 EE, nx, mx, G (PA)  
 11935 PORTUGAL VoW 0200, tlk (WT) 0242, mx, F (RLS)  
 11940v RUMANIA RB 0435, nx, F (RK) EE/NA (BBC MS)  
 11940 SINGAPORE RS 1530-1540 EE, nx, easy mx, FG (LKM,KH)  
 11940 LIBERIA ELWA 2031 EE, nx, rel px, F (RLS)  
 11940NF USSR RM \*0830 JJ, over Singapore (BP) to 0915\* //15130,12060,  
 9755,9635,6020,5960,1250MW,629MW (BBC MS) Also \*0915-1030\*  
 11945RF W GERMANY DW 0120-0220 EE/S As //9545, F (BB) 0350 SS (TS)  
 11945NF CANADA CBC \*0100-0158\* EE/NA ex-11865 //9625, G (BB)  
 11955 SEYCHELLES FEBA 1728 EE, ID, "Back to Bible", //15435 (CRL)  
 11955RF LEBANON RL \*0130-0400\* NA ex-9545v, mix BBC, EE 0230 (BB,LM)  
 11970RF E GERMANY RBI \*0415-0500\* GG/NA //11825, IDs, P (LM)  
 11970RF S AF RSA 2100 PP, G (BB) Usual 2330 EE (DN) 0130, nx (WT)  
 11970RF SWEDEN RS 2015-2115 RR/EE/As ex-9715, P under RSA (BB)

- 11975 LIBERIA ELWA 0700 EE, BBC nx (CAW) 0615 rel px (KH)  
 11975v GRENADA RG 0100-0210\* EE, rel px, nx, ID, P (RLS,TS,MN,KH)  
 11990 CZECH RP 2115 AA?, tlk (BK) FF list (Ed) \*0100-0155\* & \*0300-0355\* EE/NA, nx, mx, DX, G/w/slight RTTY QRM (SP,WT,RLS)
- 12000 AUSTRALIA VNG 0530-0545 EE, time anns (KH) 0714 do, F (CAW)  
 12005 ARE R Cairo 2115 AA, chants, G (BK) 2250\* AA Sun (LM)  
 12011½ ESPIONAGE Unid 0700-0710\* SS, "Atencion 471,final", G (BB)  
 12022v N VIETNAM VoV \*1230, pips, NA, G (ECS) JJ list (Ed) 1545 EE, tlk, P (MN)
- 12070 USSR RM 1155-1200, "Voice of Vietnam" px, VoV IS, then RM IS (BOS) Interesting, tho BBC MS has RM KK here to 1200, then off, for summer period beginning 5/7, but has EE/Pac 1130-1200 on 12060,9755,5960,1250MW,629MW...perhaps VoV relay nowhere (Ed)
- 12140v CLANDESTINE (RUMANIA) R Ind Spain 2314\* SS, pol tlks,jam (JC)  
 12190 AUSTRALIA RA 1140 Cantonese, LSB feeder to Darwin, CC mx (LM)  
 12356 CLANDESTINE (RUMANIA) R Ind Spain 2045 SS, gong tone-amnts, SS mx, G (AEM) //12140v? 12356 not found here...drift?? (Ed)
- 13250v CLANDESTINE (VENEZ) R Buzkadi 2050 SS, G (RR) No more EE (Ed) Also, jammers much stronger as of late (Ed)
- 14331 WEST IRIAN RRI Djajapura (2x7165½) 2210 Indo, mx, tlk, G (BBY)  
 14475 RSFSR (As) RM (3x4825) 2145 CC, RM IS, P (BBY) Sked summer(BBC)  
 14990v N VIETNAM VoV 1225 VV, tlks by W, strong (RWP)  
 15006v N VIETNAM VoV 1300-1330 EE, interview w/US POWs, P (KS) 1930-2000 lang, VV mx, 2000 EE, F (ARN) VV per vy old sked (Ed)
- 15080 INDIA AIR 1800 EE, nx (RR)  
 15084 IRAN R Iran 1243 Farsi, live parade (AAM) 2128\* Farsi HS relay //9005v, Persian mx, new s/off time (LM) Annces "15100"(BBCMS)
- 15085 ARE R Cairo 0100 SS, mx, E (SP,JPR)  
 15100RF RSFSR (Eu) RP&P \*1930-2000\* FF/Af, G (BB) //15440,15110,11920,11820,11735,11690,9665 (BBC MS) 11920 hopeless (Ed)
- 15105 JAPAN NHK 0300 EE Gen Svc //15300, As nx (CRL)  
 15105 BRAZIL R Rural Brasileira 2225, LA mx, strong (JDT)  
 15110 N ZEALAND RNZ 0545\* EE, mx, G (CAW)
- 15110NF VATICAN VR 0000 SS, ID, nx of Italian elections, G, moves to 15420 for EE/NA xmission at \*0050 (LM)
- 15118v CEYLON CeBC \*0030-0200 EE, unique IS, IS, pops, soft mx, nx (ARN,KS) BBC says Ceylon a rep from 5/22; no new name hrd(Ed)
- 15120 NIGERIA VoN 0635 EE, amnts, Af mx (BP) (Ed)  
 15120 FRANCE ORTF 1821 FF, FF jazz, IDs (JR) FF WS/FCNA\*1730-2352\*/  
 15120 POLAND PR 0310 EE/NA, nx, //11815 (CRL)
- 15125RF MEXICO RM 0125-0130, multilingual IDs (ARN) 0140-0236 SS, SS mx, EE/SS IDs, GG ID (CRL,JDT,BB) 15125½v, G (BB)
- 15130NF RSFSR(As) RM \*0330 EE/WGNA //17865, F (BB) Also //15180, 12050,11980,11690,6020 to 0730\* (BBC MS) 6020 odd, maybe to Alaska? (Ed)
- 15140NF VATICAN VR \*2105 FF, apparently new svc (BP) Seems so (Ed)  
 15140RF ENGLAND BBC 0345-0545 AA //9825, F (BB)
- 15145 AUSTRIA ORF 0030 EE, "Rpt fm Austria" //9770,6155 (CRL)  
 15149v N KOREA KCBS 1325 EE/SEA, P (MN) \*2300 KK/LA (LKM) New lang, ex-SS, and SS moved to \*0000, still //16320v (Ed)
- 15150NF W GERMANY DW-W 1626 lang, clas mx, ID (JDT) 1930-2020 EE/Af ex-9765 //11785, P under RM (BB)
- 15150RF USSR RM \*1030-1100\* JJ, F (BB) \*1100-1200\* etc Mayak (BBCMS)  
 15180RF USSR RM 0515-0530 EE/Af, QRM RM EE/WGNA (BB) "Soviet radio is making increased use of co-channel operation..." (BBC MS)
- 15180 ETHIOPIA ETLF 1345 EE, ID, nx, Gospel story(KS)  
 15185 FINLAND OYA \*1155-1315 Finnish/NA (SP,AEL) 1800-1830 EE(RR&EL)  
 15185RF W GERMANY DW 0920-1020 EE/Pac ex-17800 //11795,17845,21560(BB)

15190 CONGO R Brazzaville 2039-2045 FF, nx, ID, FF pops (JR)  
 15190 BRAZIL R Inconfidencia 0255-0315 PP, tlk, IDs, mx, FF ID (JDT)

15195 MADAGASCAR RN\*1100-1220\* EE/Pac Sun only, P (BB)  
 15195 TURKEY VoT \*2200-2230\* EE, mx //9515 (RK, DN, SP, MN, JDT, JPR)  
 15200 NIGERIA VoN 0702, nx, P (PA) EE (Ed)  
 15210NF USSR R Vilnius \*2230-2300\*, nx, cmtly (DN) EE Sa/Su, Lith M-F,  
 but 15210 unlist BBC MS. I imagine 15210 is used now, tho (Ed)  
 15213RFv BRAZIL R Timbira 1500, Brazilian pops, F (BB)  
 15216 TUNISIA RTT 2000 AA, ID //11970 (CRL) 2230 AA, pol cmtly //  
 11900, also 0630-0800 w/RFE QRM (BP)  
 15235 BELGIUM RTB \*2330, EE later, G (ARN) \*2215 DD (LM) 0030 FF,  
 0050 EE (JDT) //9550 (Ed)

15240 AUSTRALIA RA 0500 EE, nx, "Sounds of the '70s", F (CAW)  
 15240NF ITALY RAI 2230-0100 II/NA //11810, G (BB)  
 15250v RUMANIA RB 0200 EE, pop requests after VoA off (JDT)  
 15255 NETH ANT TWR 1415 EE, nx, F (BK)  
 15260 MADAGASCAR RN \*1400-1415 EE/SEA, DXJB, nx, IDs, G (MN, LKM)  
 15265 USSR RP&P \*2200-2230\* CC, CC mx, tlk by W (DJ) 8 // 's (BBC MS)  
 15265 CZECH RP 1806 EE/Af/As, F (AAM) CRL)  
 15265 AFGHANISTAN RA 1759-1808 EE/Eu, ID, nx, P, ann//11785(RWP, JDT/  
 15270 SEYCHELLES FEBA \*1143 lang, but EE ID, rel px, G (DJ)  
 15273v URUGUAY SODRE 0000, loc mx, F (BB)  
 15275RFv POLAND PR 1830-1900 FF/Af ex-9675 //17865v, P (BB)  
 15275 W GERMANY DW 1712 EE, cmtly, G (AAM)  
 15280NF N ZEALAND RNZ 0015 new EE svc/Antarctica ex-11780 (BP)  
 15290 SYRIA Damascus 0040-0140 AA, instr/vocal mx, nx 0100/0130(JDT)  
 15295 FRANCE ORTF 2035 EE, "Paris Calling Af", E (RK) 0515 do (LM)  
 15295RF SWEDEN RS \*0000-0230\* to ECNA ex-6175 //11805, F (CRL, BB)  
 15305RF SWITZERLAND SBC\*0145-0400\* to NA/GA ex-9750, new time, //6120,  
 9535, 11715, G (BB)

15309RFv BULGARIA RS 2200-2215 Bulg/ME //17825v, F (BB) \*2200-2225\*  
 Bulgarian to seamen, ex-7670, 11765 (BBC MS)  
 15310RF SWEDEN RS 1400-1530 to ECNA ex-21505 //15240/As, ID (CRL, BB)  
 15315NF ITALY RAI 0140-0305 II/LA //11810, F (BB)  
 15320 AUSTRALIA RA 0200-0226 EE, DX Su (JR) 0714 EE, G (CAW)  
 15320RF RWANDA DW 1800-2010 GG/Af ex-9735K //11965K, F (BB)  
 15324NF PAKISTAN RP 1825-1845\* AA/ME ex-11860 //17843½, IDs, F (LM)  
 15335RF FRANCE ORTF 1845-1915 Hungarian, F (BB)  
 15340 W GERMANY/PORTUGAL R Liberty 2200\* RR, jammers off 1' before  
 RL off (AVS) RL over jammers routinely lately (Ed)  
 15340RF CUBA RHC 0000 SS/Am //15270 etc (BB)  
 15340RF E GERMANY RBI 2000-2045 EE/Af ex-9755, P (BB)  
 15345 KUWAIT RK 1615-1750 EE, pops, nx (CG, LKM, RWP) 0610 EE (LM)  
 15345RF NORWAY RN \*0700-0830\* to E As/Pac ex-17800, P (BB)  
 15345 ARGENTINA R Nac 2038-2100 SS, ID, TC, clas mx (CRL, BP)  
 15345 TAIWAN BED49 1800 EE, features, F (LKM) 0300-0320 EE (KH)  
 15350 USSR RM \*1500 EE/Af, nx, F (LKM) //17765, 17700, 15265, 12055,  
 12035, 11920; also, EE/As \*1500 15155, 15140, 12030, 11845 (BBC MS)

15355NFv LEBANON RL 2230-0100 to LA, F w/QRM Portugal (BB, LM)  
 15365 CANARY IS RNE 0400 SS, F (BLY)  
 15365NFv ALGERIA RTVA 2245 AA ex-11965v? (BB) \*0600 AA (LM) Mni //s(Ed)  
 15380 RWANDA DW 2225-2240\* GG, choir mx, nx (JDT, EH)  
 15390RF E GERMANY RBI 1815-1900 EE/Af ex-21745 //15145, 17825, F (BB)  
 15395 AUSTRALIA RA 0730 EE/As/Pac, Darwin, mx, amnts, F (MN)  
 15410RFv ALGERIA \*0600 AA //15368v, 1830-1932 Vo the Storm AA (LM)  
 15400v IRAQ (out of order) 0325 AA, ME & western mx (JDT)

- 15420RF VATICAN VR \*0050 EE/ECNA ex-5995 //11725, from 15110/LA (CRL, LM)  
 15420 CYPRUS BBC WS 1500 EE, nx, P (LKM)  
 15425NF W GERMANY DW 1620-1720 Farsi ex-11850 //9765, ex-7130, F (BB)  
 15425 AUSTRALIA ABC Perth 0115 EE (BLY) 0711 (RK) 0915 ID (CRL)  
 15430RF SWITZERLAND SBC 0600-0645 ex-9590 //11765, 15305, F (BB)  
 15435V CZECH RP 2130 PF/Brazil (BF) 15430vNF 2230-2300 CS/SA (BB)  
 15435RF W GERMANY DW 2140-2300 PF/Brazil ex-9690 //9610, 11795, G (BB)  
 15435 SEYCHELLES FEBA 1800 EE, then AA, rel px, PF (AEM)  
 15440 PHILIPPINES FEBC 1339 EE, then Hindi, ID, TCs, organ mx (CRL)  
 15449 BRAZIL R Nac Brasilia 2345 PF, IDs, ads, mx, G (DJM) 0300 PF, tlk, mx (BK) Will be 24h in EE from 5/31/72 (BBC MS)  
 15510 CHINA RP 1227 EE/SEA, tlks, F (AAM)  
 15520v BANGLADESH RB 0145, wk (BBy) 0145 EE nx gone (BBC MS) \*0230-0245 EE O'seas Svc, nx, P (KS) Some nites vy gd here (Ed)  
 16320v N KOREA KCBS \*0000 & \*0100 SS, \*2300 KK/LA //15149v, ex-SS 2300 & KK 0000, nx by M, IDs, KK mx, G (JDT, LM)  
 17380 INDIA AIR GOS 1030 EE, P w/RTTY, list WRTH 17830 (LM)  
 17513NFv NETH ANT R Curom 1500-0400\* DD/Papiamento, pops, Antillan rhythms, bank ads, TCs, IDs, rare nx, baseball nx, over a diesel jammer, QRM RTTY on the USB, vy irr operation, G ?!?! (LM)  
 17651 ENGLAND BBC 0920 EE, RCLSB feeder //17705, G (LM)  
 17655 ARE R Cairo 1755 EE, nx, LM (JDT)  
 17673RF CHINA RP \*0000-0055\* EE/ECNA ex-11675, nx, RTTY (CAW, LM) CPA in WRTH incorrect (Ed) //15060  
 17710NF SWITZ SBC 1315-1500 to S As ex-17845 //17885 ex-21605, 15305(BB)  
 17720 TAIWAN BED 39 0203-0350\* EE/WCNA, CC mx, cmt, F (LKM, RWF)  
 17740NF AUSTRIA ORF 0400-0600 GG/SEA ex-17785, P (BB)  
 17765 FRANCE ORTF 1730 FF, nx, IS, mx (JDT)  
 17770 N ZEALAND RNZ 0255-0340 EE, LM, nx, pops (JDT)  
 17772NF IRAQ Baghdad 1645, maybe //17802v, but 17772v much better (ECS)  
 17772v 1530 AA maybe ex-17802v, drama, F (BB)  
 17775 USSR Riazan list, \*1100 EE, nx, wk (AVS) \*1100-1130\* to S & SE As //21515, 21490, 17850, 17820, 17730, 15155, 15140, 11845 (BBC MS)  
 17780 TAIWAN BED95 0215-0225 EE/WCNA, mx //17890, 17720 (CRL, AVS)  
 17785NF NETH ANT RN \*2255 DD/LA (BP)  
 17795 AUSTRALIA RA \*0430 FF/Tahiti, IS, ID, PF (MN) BB)  
 17795RF NORWAY RN \*2100-2230\* to ECNA, EE DX on ANARC Convention (CRL/  
 17802v IRAQ Baghdad 2000-0230 Farsi, tent ID, lo voice M&W (ECS)  
 17805 VATICAN VR 2330 SS, nx (EH)  
 17805 PORTUGAL RFE via RTE tx 1105 Polish, G, no jamming hrd (AVS)  
 17815RF CUBA RHC \*2007-2140\* EE/Eu ex-15425, VoV relay 2115, E (LM)  
 17825NF BULGARIA RS \*2200 Bulg ex-11765 //15309 ex-7670, P (BB)  
 17825 NORWAY RN 1605-1630\* EE Su/ECNA, nx, mx, tlk (GB)  
 17825RF E GERMANY RBI 1815-1900 EE/Af //15390, 15145, F (BB)  
 17830RF SWITZ SBC 2300-0130 to SA ex-9535 //15305, 11720, 9750, G (BB)  
 17830NFv CEYLON CeBC 1030-1130 new SEA Svc //11740, 15118v, pops (BB)  
 17835NF NETH ANT RN 2300-0020 DD/SA ex-6020B, G (BB) (BB)  
 17835NF SWITZ SBC 0730 to E As ex-11865 //21520 ex-15305, 11775, 9590/  
 17855RF CANADA CBC 2300-0100 to Carib/LA //15190, 11945, 9625, G (BB)  
 17865RF RSFSR (As) RM Komsomolsk \*0330 EE/WCNA //11690 etc, G (BB)  
 17875RF W GERMANY DW 0950-1040 Farsi //21650, new svc, F (BB)  
 17880 ECUADOR HCJB 1415 EE, rel px, strong (EH)  
 17885NF SWITZERLAND SBC 1315-1500 to S As //21520, 17710, 15305, F (BB)  
 17910v GHANA RG 1500 EE, nx by M (ECS)  
 17934NFv BANGLADESH RB 1130-1220\* Bengali (BB, LM) 17932v \*1230 EE FS, nx, nom 17935 ex-17910v, F (AVS)  
 18050NFv USSR RM (presumed) 1059\* RR HS, LSB feeder, no ID, unlist BBC MS, G (LM)

- 18215 AUSTRALIA RA Lyndhurst 2235 Indo, USB feeder to Darwin, LSB VV, GE (BBy) Cf 12190 (Ed)
- 18370 CHINA RP 1140 Cantonese/SEA, 2 x 9365, clear tho weak (BBy)
- 19180 AUSTRALIA RA 2142 EE/SEA, 2 x 9590, pops, vy weak (BBy)
- 21475 BELGIUM RTB 1300\* FF Su/Congo, messages to Congo missionaries (AVS)
- 21485 AUSTRALIA RA-Darwin 0305 EE, pops, F (AVS) //21550,17870, 17715,15240,15160 to As/Pac (RA)
- 21500v CONGO ORTF 1100 EE, nx, G (AVS)
- 21515 RSPSR(As) RM-Chita (list) 1155 Hindi, Indian mx, weak (AVS) \*1130-1200\* //21490,17850,17775,15230; then Marathi \*1200-1230\* //21490,17795,17690,15230,15200; then Tamil (BBC MS)
- 21530 ENGLAND BBC 1230 EE LL/USSR, G (AVS)
- 21530 USSR Prob RM-Frunze 1230 As lang, P w/BBC QRM (AVS) Not list BBC MS, but prob because of BBC QRM at Caversham Park; at 1230 RM has Burmese, CC, Gujarati, Hindi, Laotian, Oriya & Tamil (BBC MS)
- 21545 S AF RSA 0900-0950 GG Su/Tu, strong (AVS)
- 21550NF AUSTRALIA RA 0500 EE/As ex-21540, P (BB) Cf 21485 (Ed) 0130 EE, is Shepparton, nx, E (AVS)
- 21555NF ALGERIA RTVA 1715 AA (AVS)\*1000-1800\*(BBC MS)
- 21555 INDIA AIR Delhi 1100\* EE GOS/N As, P (AVS)
- 21570RF NETH ANT RN\*2000-2120\* FF/af ex-17830B //11730L, E (BB)
- 21580 ARE R Cairo 1130 FF, AA mx, under ORTF, also in FF! (AVS)
- 21580RF W GERMANY DW 1320-1420 CC ex-11850 //15235,17845, P (BB)
- 21580 FRANCE ORTF 2042 EE/af, nx, variety px, G (RLS)
- 21585 USSR Minsk, Byelorussia (list), RM 1200 Bengali/Bangladesh, P w/QRM SBC (AVS) \*1200-1230\* //21575,17880,15450,11990(BBCMS)
- 21595 FINLAND OYA 1314\* Finnish, 1 kw test now seems 100 kw, G(AVS)
- 21600RF W GERMANY DW 1045-1115 EE/af ex-21510 //17875, P (BB)
- 21605NF FINLAND OYA \*1800 EE, strong, cf 21595 (AVS) I seem to recall hearing this recently on 15185, so assume this is in // (Ed)
- 21605RF KUWAIT RK 1030 AA ex-21525, G (BB)
- 21645 FRANCE France Inter HS relay 1400-1711\* FF/ECNA, unlist WRTH, nx, mx, wx, features, traffic rpts, vacation nx, nx of impending SNCF strike, tx moves to 15120 \*1730 for FS/ECNA, E (LM) Brief nx daily on the hour (BBC MS) Ideal for vacationers bound for France (Ed)
- 21695NF ITALY RAI 1600 II Su, sports (AVS) Prob to Canada ex-21690(Ed)
- 21705RF MEXICO RM 1430 SS, hets DW-W (BB) Seems awfully irr (Ed)
- 21705 W GERMANY DW-W 1300-1510 GG/S As, F (BB)
- 21725RF USSR RM 1430 Burmese, F (BB) \*1430-1500\* //21505,17880, 17870 (BBC MS) RM 1105 via Tashkent (list) Thai, F (AVS) \*1100-1130\* //21575,21505,17870,15185 (BBC MS)
- 21730 NORWAY RN 1600-1630 EE Su/SA/af, nx, G (AEL) Ditto, P (PA)
- 21740 AUSTRALIA RA\*0100 EE/WCNA, nx, mx, tlk, P (EH)
- 23370 CHINA RP 2240, 2 x 11685, "Internationale", P (BBy) \*2200-2300\* (2255\* actually) PP/Brazil 11685,11445,11375 etc (Ed)
- 23580 AUSTRALIA RA Shepparton 2236 Indo, 2 x 11790, F but better here than on 11790 (BBy)

This month's loyal reporters...

AAM Albert Miller, OH/HRO500	BBy Bob Bundy, Truk/R530,SPR4
AEL A. Linsenmeyer, IL/SW4A	BK Bob Kelleher, NY/SX190
AEM A.E. Martin, Eng/51J2	Bly Brian Lym, CA
ARN Al Niblack, IN/SX100II	BMS Brooks Sweeney, OH/HQ180
AVS Al Sizer, CT/HQ180,SPR4	BP Bob Padula, Australia/CR100
BB Bill Berghammer, NY/SP600	CAW Craig Wicks, MI

CG Charles Gaharan, LA	KH Ken Hunt, CA/TO7000
CP C.R. "Pat" Patterson, GA/SX99	KS Kenneth Schnur, NY/HQ180
CRL Chris Lobdell, MA/SW4A	JPR James Ronda, OH/RF5000
DJ Dan Jamison, VA/SW4	LKM Larry Marshall, CA/SX190
DJM Doug McClellan, NM/GR64	LM Larry Magie, CA/M44
DN Doug Nathman, FL/RE8000	MAF Marlin Field, MI/SX100
DW Dave Williams, OR/75S3C	MN Mike Nikolich, IL/Normende GT
ECS Ed Shaw, VA/SX190	RK Robert Koziomkowski, NY/DX150
EH Eric Herson, OH/SX110	RLS R.L. "Buddy" Stephens, GA/HA500
ENR Ed Ricchezza, PA/SW4A	*PA (RMa) Rich Marchak, PA/DX150A
EU Errol Urbelis, NY/SX43	RR Ralph Richards, CA/DX120
FH Fred Heutte, Jr, DC/HQ129X	RWP "Ralphus" Perry, IL/S85
GB Gordon Brill, WI/S120A	SK Steve Kamp, CA/HQ140X
GH Glenn Hauser, TX/HQ160	SP Steve Putterman, PA/S120
GLD Gerry Dexter, WI/HQ180	TS Ted Smith, TX/GR54
HMA Hiro Matsuura, Japan	WT Walter Trkula, PA/S120

\*Well, I used to know the alphabet, Rich, hi...RMA hereafter!

Special warm thanks go out this month to Ed Ricchezza, who spent no small amount of time helping prepare LR for typing!

Items credited to "BBC MS" are copyright information supplied by the BBC Monitoring Service and are reproduced with their permission. NASWA cannot confer republishing rights to this information, so persons wishing to reprint BBC MS data should first secure permission from the Special Listening Section, BBC MS, Caversham Park, Reading RG4 8TZ, Great Britain. For those interested, an annual subscription fee for these weekly airmailed schedules and tips is roughly US\$60.

#### POTPOURRI

As some of you will notice, the quarterly freq changes made it necessary to omit some otherwise fine loggings no longer valid since May 7. As to non-SWBC items that sometimes are included (e.g., harmonics, feeders, espionage stns), these are included only as space permits as an aid to those DXers interested in such activity. Naturally, they don't count towards SWBC country totals.

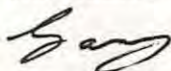
Newly-revised LR report forms have recently returned from the printer. Not only do they help make monthly compiling quicker and more accurate, but they help you in that the requirements are all clearly laid out and organized for rapid completion. A tidy supply is available from here for an SASE with 8¢ or 12¢ postage (3rd class). So why not send an SASE now or with your next report? Tnx!

Dan Jamison, aided by Toan Nguen Duy, has completed a 6-page Vietnamese QSL reporting guide, which should be invaluable for VTVN and similar stations. You may obtain a copy for a double-stamped SASE from 700 McIntire Road, Charlottesville, VA 22901.

Late item: June's National Geographic indicates "Celebes" (Indonesia, cf NASWA Country List) is now called "Sulawesi". And SCDX indicates that Ceylon is now officially called "Sri Lanka".

Finally, if you're vacationing outside North America, why not drop me an aerogramme and let us know what you're hearing on your transistor portable or your host's multiband domestic set?

Best summer wishes,



## FLASHSHEET

FREQ: KCS

TIME: GMT

AL NIBLACK, EDITOR; 420 Shelby Street, Vincennes, Indiana 47591. DEADLINE 20-TH

ANGOLA 3345 R. Cl. de Huambo, S/on 0500 with anthem and PP ID, mx till 0530 fade-out. Good sig //5060. (E.S.Behr, Canada)

ARGENTINA LOL SS time signals heard well; 2330-0000, at 5 minute intervals amnot on 15000, under WV. (Ed Insinger, N.J.)...10000 LOL, B. Aires, with CW IDs repeated 2334, 2339, etc; YL SS ID 2335, 2340, etc. (Dan Jamison, Virginia)

AUSTRALIA Darwin Relay on 21485, ABC News 0230; also on 17715 with ABC News at 0700, heard regularly with strong signals. (August Balbi, Calif.)

BOLIVIA 4601 R. Guayaramerin, LA mx, SS talk to 0255 S/off, on Sun. GMT. (E.S.Behr) ...4700 R. San Miguel, local singing, SS amnot by YL to 0245 S/off, Sun. GMT. (E.S.Behr) ...4700.5 (TENT) Belleve R. San Miguel CPL14, heard here 0130, though prgmg was non-Andean. (Bill Berghammer, N.Y.)...4823 R. Grigota, native mx, mentions of, "Sta. Cruz", to 0336 S/off, 5/14 GMT, an excellent day for Bolivians. (E.S.Behr)...4822 R. Grigota full SS ID (Indian accent), 0220, 15 May. (Bill Berghammer)

BOTSWANA 3356 R. Botswana, 0420 U.S.pops, YL amcr, //4845 in QRM. (E.S.Behr)

BAHGLADESH 15520 Mx 0130-0200, new EE sked now in effect. Have read a nice letter and attractive QSL card, signed by M. Habibullah, IE. (Ed Insinger)...John Campbell, Tex., reports Dacca's new sked effective 2 May. GOS is now 3 times daily: 0230-0300, 15520; 1230-1300, 17935; 1715-1800, 11650...17935 At1230 GOS, Dacca, heard in EE mx, with sudden S/off 1259. (George Schnabel, N.Y.)

BRAZIL 3364.9 R. Dif. do Parana, noted 0845 in PP pops. (Bill Berghammer)...4784.7 Radio Ribamar observed 0815 in PP. (Bill Berghammer)...5999 R. Inconfidencia, 0755 mx, 0800 IDs and chimes. (Bob Bundy, Caroline Is.)...15190 R. Inconfidencia, found at 0255 tune in PP, but FF ID at 0311. (John Tuchscherer, Wisc.)

CAMEROONS 3970 (TENT) R. Buea in weak FF and Afro mx, probable ID 1928 (Bob Bundy)

CANAL ZONE QSL in for Balboa Time Station in 15 days. Logged well on 17697, pwr is on the average 3.5kws. Heard at 1655 tune. (Ye Olde Editor Ralpus Perry, Ill.)

CHINA Fukien Front, new outlet? //5170, 4380, 3400, 3200 (6765). (Bob Bundy)...

4035 TIBET (TENT) Ihasa with RP Relay in Hindi (presumed stn & lang) as sked by BEC MS. Hrd 1610, 13 May. (Bob Bundy)...3900 Hailar (TENT) with Mongolian HS. Usually hear Fukien Front here. (Bob Bundy) (Hailar is a goodie, Editor)

COLOMBIA 5962 LV de Bogota, reactivated 0515 SS ID, 12 May. (Bill Berghammer)... R. Sutatenza, 5095, SS prgm of mx, nx, 0200, nice, QRM free. (Ed Insinger)

DENMARK 15165 HD, 1600, EE ID, IS earlier, fair lvl. (Ed Insinger)

ETHIOPIA RV0G, EE prgmg 1330-1400 on 15180, weak lvl, poor readability (Ed Insinger)

FIJI R. Fiji here at 1040 on 3230; and 3284 at 1100, with former in Piadin, and latter difficult due to QRM. (Jon Williams, Ind.)

GERMANY (W) DW, Wertachtal, testing new 500kW xmitter, 1800-2010, 11850, in GG, strong no strain lvl. (August Balbi)...6170 DW, Wertachtal with hi-power in EE to ECNA, 0130-0250, on 6040, 6075, 9735. (Bill Berghammer)

GUAM NFN fair but UTE QRM on 17530 with time pulses (AM Mode), 1755. I presume that transmissions are continuous. (Ralph Perry)

HOLLAND 11925 HN (via Bonaire?) 2130-2250 SS to ECNA //15425, ex 11945. (Bill Berghammer)

INDONESIA 5084.4 RRI Medan, peaking 1030 in II, reportedly //other Medan outlet on 4764. (Bill Berghammer)...3905 S/on 0753, RRI, Djajapura, West Iran, with IS preceding S/on, ID; //6070. (Bob Bundy)...3975 0806-1030 West Iran, QTH unknown, II mx. At-0915 local ID, but very soft, could not read it. (Bob Bundy)

ITALY 15240 RAI 0119 tune-0136 S/off, lt mx, talk, IS, new fgy. (John Tuchscherer)

JAPAN 15260 FEN, Tokyo, heard most days, EE news 0700 and 0800, fair lvl. (August Balbi) (Its been a long time since I have seen FEN reported on this fgy, Editor)...NHK, 21570, in current tx to Europe, 0645-0845, is an excellent barometer for band cond (Bill

KUWAIT 15125 R. Kuwait 1730, AA, //11825, new fgy. (Bill Berghammer) / Berghammer

MALAYSIA BECFES relay BEC, one new 9600, powerful lvl, at 1745, 16 May. (August Balbi)

MALI R. Nationale du Mali now schedules its weekly English broadcast to the USA and Canada on 17895, 1500-1600, on Tuesdays. Info dated 5 May. (Dr. Campbell, Univ. of Texas)

**MEXICO** 11820 XEER, pops and SS commercials, 1507, possibly 150 watts. (Dan Jamison, MORAGO 11855 TWR recent new fgy, S/on 0630 in RR(Bill Berghammer) / Bill Berghammer) ...TWR, Monte Carlo, S/on 0905, 9735, in PP1000 in GG, on 11870, also(August Balbi)

**NEPAL** 5000 R. Nepal(presumed) with YL talk and Asian mx over JYJ/WNVH/WNV briefly; then downhill lvl, possibly into EE at 1503 but then buried by JYJ, etc. (Bob Bundy)

**NIGERIA** 6100.5 (TENT) NBC, Maiduguri, has reportedly moved here, ex 4900, noted at 2245 in EE, S/off around 2300, bad QRM, strain lvl readability. (Bill Berghammer)...

11925 R. Nigeria recent new fgy, S/on 1800-1930 EE, //15185. (Bill Berghammer) ...Enugu, EC8BCS, still in no pain lvl, 7232, 17 May, EE ID at 0500 S/on. (Ralph Perry)

**NEW ZEALAND** RNZ replaced 11780 with 6080 //9540, 0600-0840, 7 May. (August Balbi)

**NORWAY** (FLASH) 7240, 10 kW, heard with regular NRE IS, at 0458, into HS, but not held long. Rough copy due to AROs. Not heard since. (Ralph Perry)

**PAKISTAN** 3939 1630-1730 S/off, R. Pakistan, Lahore, 1630 lang talks; 1633 ID, "Radio Pakistan, Le-ho'-ce", then Pakistani mx; EE request prgm at 1705 returns, NEM? (Bob Bundy)

**PAPUA/NG** R. Rabaul on 3385, 1115, with fair signal...Radio Bougainville, 22 May, 3322.5, at 1115 tuning, until fade out 1120. Good lvl at tuning. (Jon Williams)

**PERU** 5950M R. Arequipa from 0209 tune, 10 May, orgn mx, than SS anmcs. Clears IDs. (John Tuchscherer) ...5950, Radio Arequipa, down low lvl 0243, SS ID, local guitar tunes. Thanks to JDT for tip! (Ralph Perry) ...4784.5 Radio Atlantida, mx and SS IDs to 0455 S/off, a new fgy, //9622. (E.S.Behr)

**SOLOMON IS** 3995 0810 SIBS mx in Pidgin talking about upcoming celebrations of "Queen's Birthday" on 2 June. (Bob Bundy)

**SO AFRICA** 3965 SABC EE Svo mostly music and EE anmcs. (Bob Bundy) ...SABC, 4947A, mx, some EE at 2200, QSB bothersome. Lists 4945. (Ed Insinger) ...11790 SABC's EE Svo S/on 0730, new 2 May. QRM, 23322. (Bill Berghammer)

**TAIWAN** 1713A WOPC, from 1156 tuning, CC mx, YL amncr. (John Tuchscherer)

**TURKEY** 15195 Ankara with EE at 2200 //9515, with crystal clear reception. (Ed Insinger)

**USSR** 12000 RM uses this fgy at 0200 in EE to NA, good results of course, with their saturated QSA. (Ed Insinger)

**SINGAPORE** 6000.5 R. Singapura, 1045 in Mandarin peaking, 15 May, 23323. (Bill Berghammer)

**VENEZUELA** 5020 R. Nacional, to 0356 S/off with full ID and anthem. Anmcs one kW on this fgy. (E.S.Behr) ...This one, Radio Nacional, mostly classical and pleasant mx as is on MW. (Editor Larry Magne, Penn.) ...R. Carora (formerly here) is now on 4909V, since January. (E.S.Behr; Larry Magne) (Heard in "our" evenings, Editor)

**VIENTIANE(V)** VofV, Hanoi, heard at 1325 in EE, on 15006, fair signal. (Jon Williams)

**YUGOSLOVIA** Radio Belgrade in EE, 9620, good lvl with mx, 2200-2215. (Ed Insinger)

**LATE ITEM:** Current checks locate weak signals on 395EM, from as early as 2232 till as late as 2310, at various QTHs. Need more be said, it's possibly FIES, but get a QSL before going overboard with a positive ID. (Ed Shaw, Virginia; Don Jensen, Wisc; Al Niblack Ind.) (What a hot potato, Editor)

**UNIDENTIFIED:** Who is on 4890, around 0430A?? Semingly is an Afro, a lot of pain and strain to copy this one. (John Tuchscherer; Ralph Perry) ...4028 S/on 1125- UNID Viet language station with IDs at 1130 by OM and YL; operates 6708 past 1300 in parallel, 13 May. (Bob Bundy) ...6070 1220-1302 S/off UNID CC prgmng, mx and nx, highly jammed. Is now blocked by RHU Djaipura. (Bob Bundy) ...11577 at 2045 an UNID with flute or similar type instrumental mx. Signal is somewhat distorted. (Dan Jamison) ...Noted in the 33 Meter Band, some kcs below Kol Israel, 9009, in Asian mx, not Chinese, possibly Vietnamese. Melodious mx sung by womens' voices, not Mao tunes. At 2126 has brief anmcs and national anthem. Possibly Hanoi?? (George Schnabel) (Possibly Iran, 9005, till 2130 S/off, Editor)

**ERRATUM:** Note in May FS you misunderstood me. I meant that Nepal had been logged in Australia by Australian listeners—not by myself. I have never been in Australia. (Bob Bundy, Caroline Is.) (It's odd what Gremlins creep into print at times, despite well meaning efforts, Editor)

**APRIL 1972: SUNSPOT COUNT AS FURNISHED BY THE ZURICH OBSERVATORY, 5-6-72- 1-40, 2-46, 3-43, 4-38, 5-32, 6-51, 7-76, 8-75, 9-74, 10-88, 11-75, 12-80, 13-78, 14-65, 15-67, 16-60, 17-55, 18-59, 19-62, 20-65, 21-85, 22-85, 23-83, 24-82, 25-88, 27-62, 28-66, 29-38, 30-22. MBAN-64.3**

**PREDICTED: MAY-52 JUN-50 JUL-49 AUG-47 SEP-46 OCT-44** (Grady Ferguson, So. Carolina)

**ACKNOWLEDGEMENT:** A warm thanks to all those who supported the FlashSheet for this month. Please come back. In the May 1972 CQ is a very thorough and comprehensive review of Radio Shack's SX-190 receiver. Suggested reading for those interested. Call last minute items to 882-3976 after 2200 GMT.

# Frendx Fotos

Support NASWA, Send your Photo to:

Edward G. Shaw  
621 Burleigh Avenue  
Norfolk, Virginia 23505



"Corky" Webb  
Texas



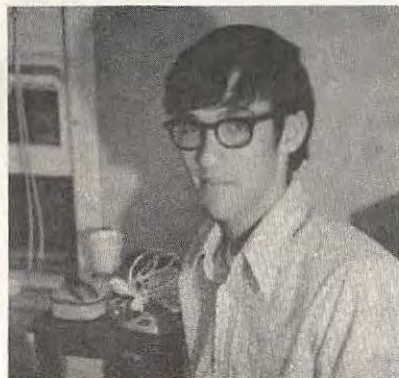
Russell Lay  
Virginia



Larry Flegle  
Florida



Dan Henderson  
Maryland



Martin Imbert  
Virginia



Tom Gavaras  
Minnesota



RETURN TO:

Dan Ferguson  
1521 Smith Road, Apt. 7  
Charleston, W.Va. 25314  
U.S.A.



FIRST CLASS MAIL