

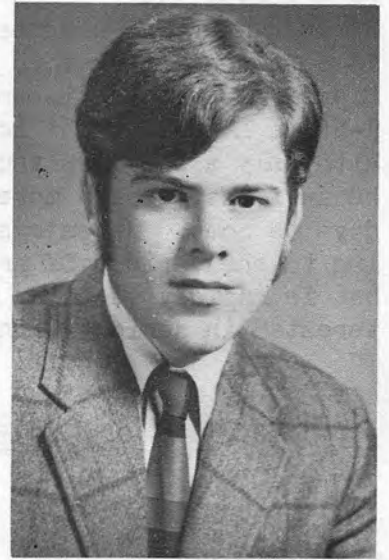
NASWA PHOTO PARADE



CHRIS LOBDELL



DAVID BALTIMORE



ROSS HULVEY III



ROBERT SHEPHERD



DONALD JENSEN



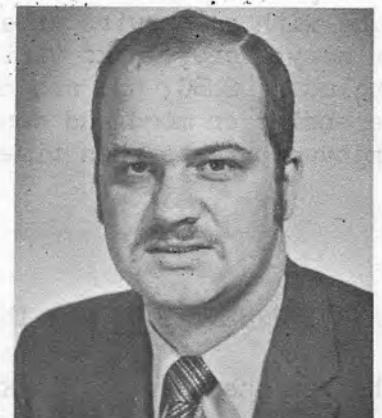
BOB PERITZ



ROBERT ESTAND



DON SCHIED



ANDY RUGG

For info/data on above NASWA members, see next page. Have you sent your pix in yet?

ROSS HULVEY III

a recent new NASWA member, Ross is a student, therefore single. His rx for present is an Ameco R-5 and he uses a 75' longwire. With only a few QSLs thus far, he anticipates many more in the days to come. He enjoys listening to the various DX programs, but is rapidly becoming more interested in serious DXing.

DAVID BALTIMORE

Manager of a TV-Radio station, Dave is married and has been in NASWA for 3 years. He uses a National HRO-500 rx along with a trap dipole antenna. SWBC QSLs thus far total 59. His main interest in the hobby is to hear what goes on in the rest of the world and to DX as many new countries as possible

CHRIS LOBDELL

A college student, single Chris has been an active NASWA member for 3 years. He DXes with a Drake SW4A, employing a Mosley SWL-7 Antenna. His SWBC QSLs at present number 119. Chris likes DXing Africa and LA most. Aside from being a NASWA member, he edits part of SWR section for sister club ASWLC's SWL (and does a fine job!)

ROBERT FERITZ

Also a college student, single, Bob too, has been with NASWA for three years. An Ameco R-5 is his rx using an inverted "L" antenna. To date, he has 41 SWBC QSLs. Says Bob, "My main interest in DXing is to find out more about this fouled up world of ours."

DON JENSEN

In his 8th year with NASWA, Don is a newspaper reporter, is married and has 3 children. During his tenure in the club, he has served in various capacities, is presently our Country List Chairman as well as advisor to BoD. His rx is a Drake R4B, antenna a longwire plus a Joystick. SWBC QSLs now total a 'sweet' 200. His main interest in DXing involves clandestine stations of which he has written about in past bulletins and national magazines.

ROBERT SHEPHERD

A computer-programmer, single, Bob has been in NASWA for 3 years and reports regularly from his QTH "down under" in Australia. He uses a Marconi B28 (CR-100) rx and a longwire antenna. His SWBC QSLs total 153. For some years, he has served as one of the officers of the ARDXC along w/fellow member Bob Padula.

ANDY RUGG

From VE-land, Andy is a chartered accountant, single. Been in BASWA four years. Uses an AR88D rx along with a longwire antenna. He, as many DXers, works various bands including SWBC, MW, and ARO..... depending on mood and conditions. Enjoys contests when time permits.

DONALD SCHLIEF

A new member, Don is a design draftsman, married. His rx is a Hammarlun HQ-145A- his antenna is a dipole. He doesn't get too much time for dial twisting, but he has managed 25 SWBC QSLs so far. After serving a hitch in the USAF, he is just getting back into the swing of DXing.

ROBERT ESTAND

Bob works for the telephone company in El Paso. Is single. Has been with NASWA two years. Present rx is a Realistic DX-150, due his being restricted to space, antenna is short length of wire around the ceiling of his shack. SWBC QSLs total 75.

HAVE YOU SENT YOUR PIX IN YET? WHY WAIT? AS LONG AS WE HAVE PICTURES, WE WILL PRINT 'EM.

Photographs must be Black and White, either snaps, portraits of yourself or den or receive

UNITY AND FRIENDSHIP