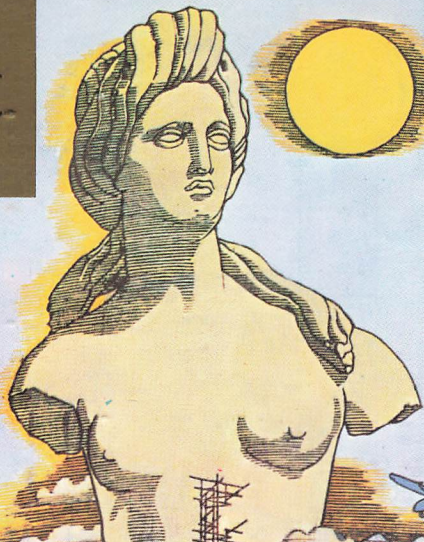




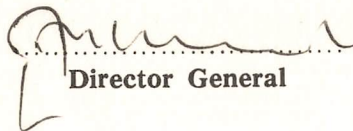
Q
S
L



Samy Tacombe

We have pleasure in verifying your report on our transmission from our Station at.....Nicosia.....
Date..17.10.69... Time.18.59-19.44 GMT
Frequency.15260... KHz Channel.....

We hope you will tune regularly to our Stations and that you will send us more reports from time to time.


Director General

CYPRUS BROADCASTING CORPORATION
P.O.BOX 1824
NICOSIA - CYPRUS

SOUND BROADCASTING

Nicosia 602 KHz 20 KW
Nicosia 692 KHz 20 KW
Paphos 917 KHz 2 KW
Limassol 1484 KHz 0.5 KW

17875 KHz 30 KW
11910 KHz 30 KW

TELEVISION

(CCIR 625 lines)
(Vertical Polarisation)
Mt. Olympus Ch 6 40 KW ERP
Sina Oros Ch 8 40 KW ERP

AIR MAIL



Mr. Gerry L. Dexter,

Rt. 1, Maple Rd.,

Lane Geneva, Wisconsin,

53147,

U.S.A.